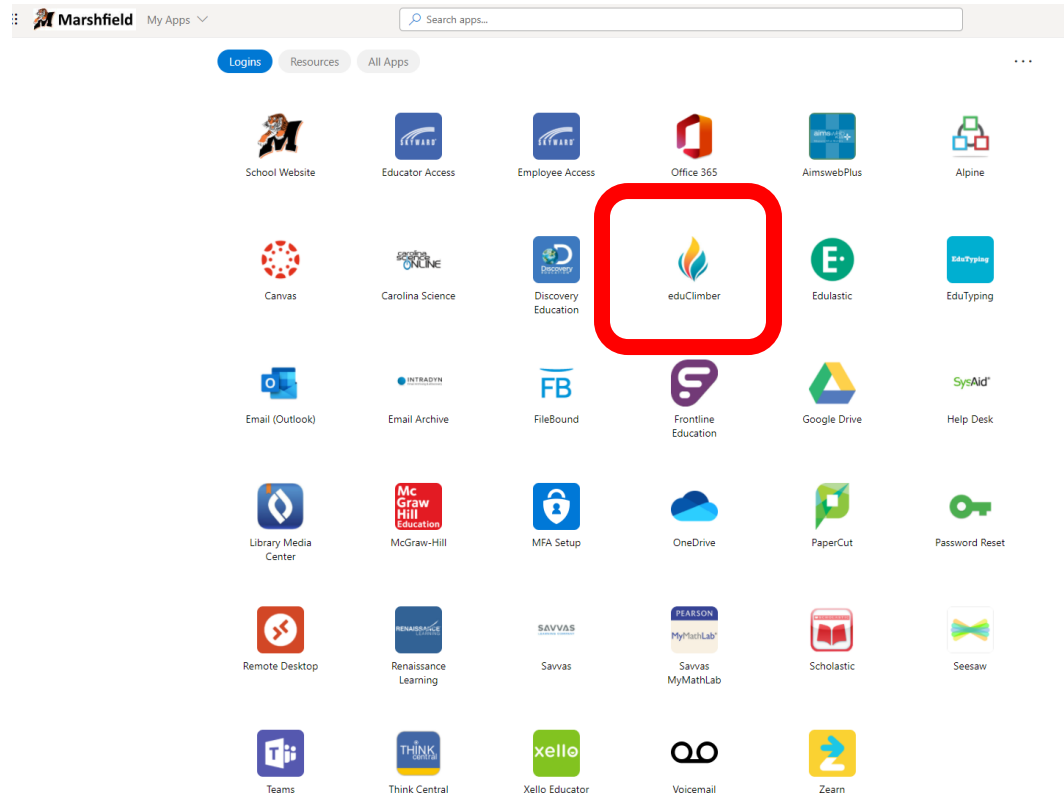


## EduClimber Basic Navigation: (Early Access View)

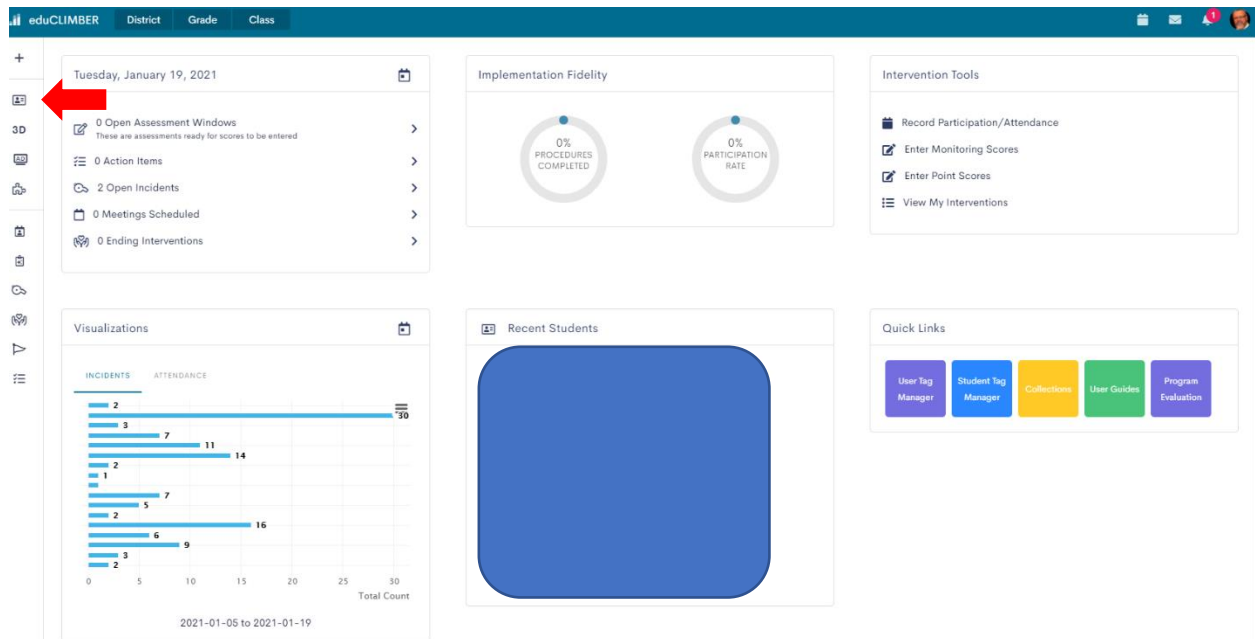
Begin by going to the School District of Marshfield Website-Staff-My Apps-EduClimber.



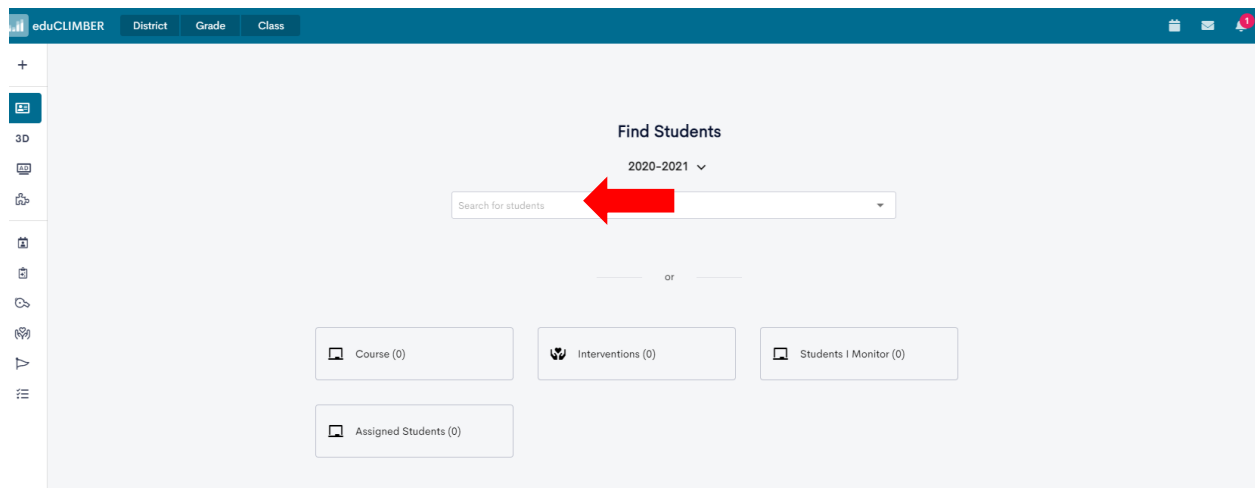
Next: Sign-In with Google

A screenshot of a sign-in form. At the top is a small bar chart icon. Below it are fields for 'DISTRICT ID (SWITCH)' (containing '1526'), 'USERNAME' (with placeholder 'Enter your username'), and 'PASSWORD' (with placeholder 'Enter password'). There is a 'Forgot Password?' link. A green 'Sign In' button is below the password field. A red arrow points to a blue 'Sign In with Google' button. At the bottom, there is a 'Follow Us!' section with social media icons for Facebook, Twitter, and LinkedIn.

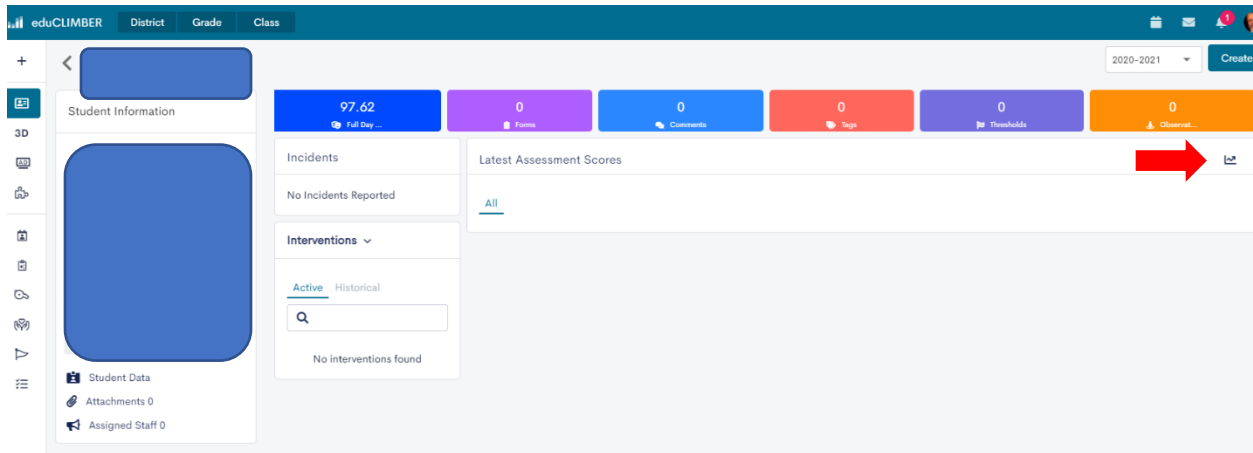
Most basic navigation will be on the left of your screen. To find individual student data, click on the Student Profile Icon.



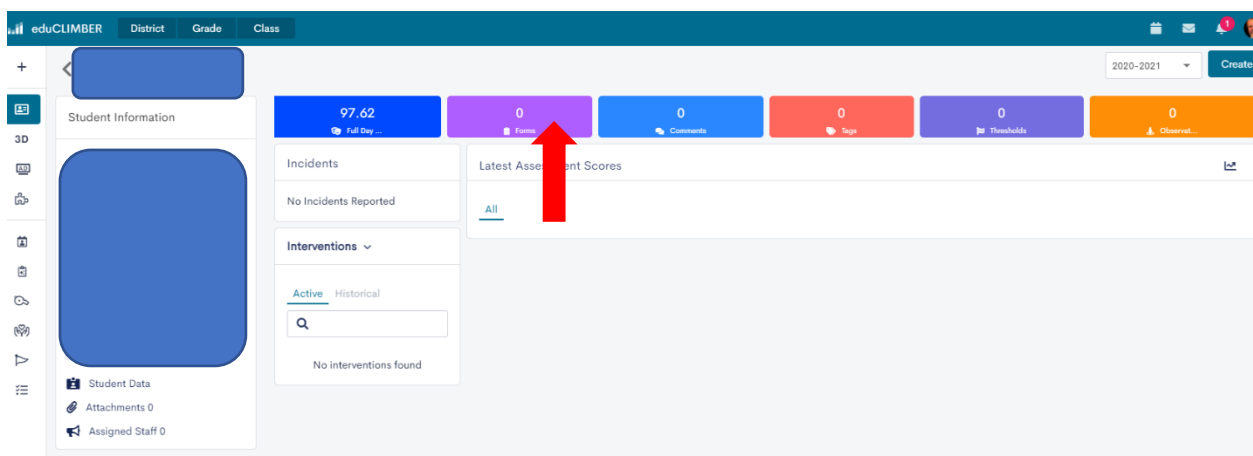
Start typing in the “Search for Students” box until the student is located, then click on that name.



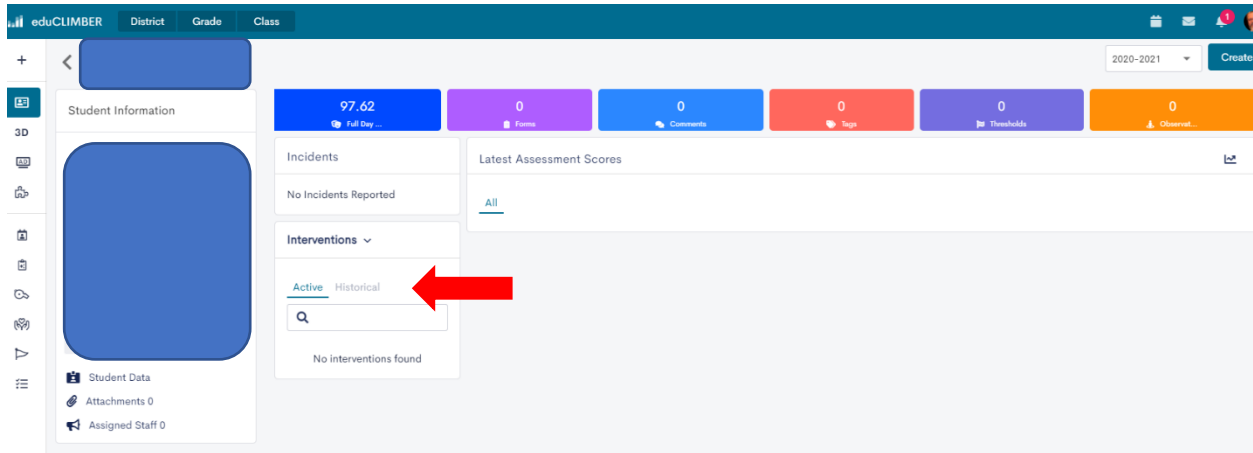
Click on the graph arrow (right corner) to view all historical academic scores for the student.



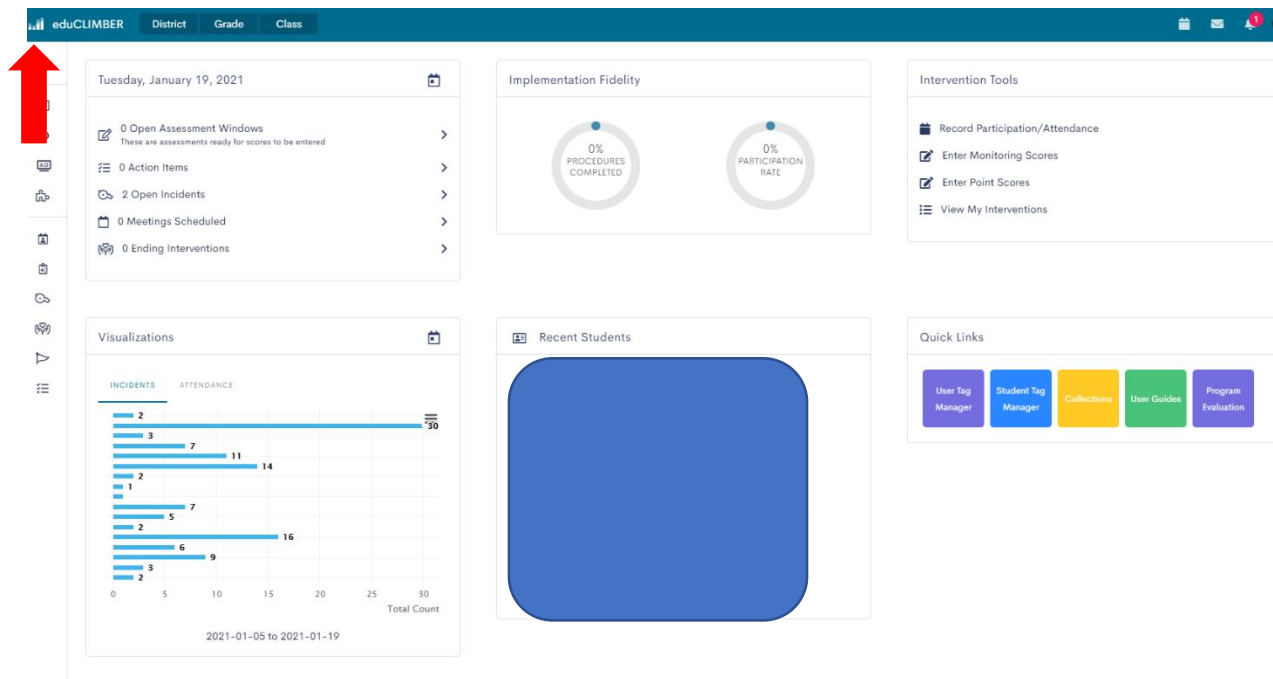
If a student has a smartForm (PLP, Problem Solving Meeting) attached to them, you will find it by clicking on the Forms tile. A zero in that box only means the student doesn't have a smartForm created for this year. All historical forms will show up if you click on that tile. Once you open the tile, you can see which year the smartForm was created.



If a student has any active or historical interventions, you will see the information under the Interventions tab on the left side of the screen. You can toggle between Active and Historical depending on your needs.



Now it is time to look at group data: I suggest clicking on the bar graph in the upper left corner to go back. Do not use the back arrow on the top of your screen since it will take you all the way out of EduClimber.



eduCLIMBER

District

Grade

Class

Tuesday, January 19, 2021

0 Open Assessment Windows

These are assessments ready for scores to be entered

0 Action Items

2 Open Incidents

0 Meetings Scheduled

0 Ending Interventions

Implementation Fidelity

0% PROCEDURES COMPLETED

0% PARTICIPATION RATE

Intervention Tools

Record Participation/Attendance

Enter Monitoring Scores

Enter Point Scores

View My Interventions

Visualizations

INCIDENTS

ATTENDANCE

Recent Students

Quick Links

User Tag Manager

Student Tag Manager

Collections

User Guides

Program Evaluation

You will then see charts displaying data for the school, grade, year, categories and assessment chosen. You can then click on the chart for specific student data related to the sub-test or click on the Data Wall to see all student scores.

