



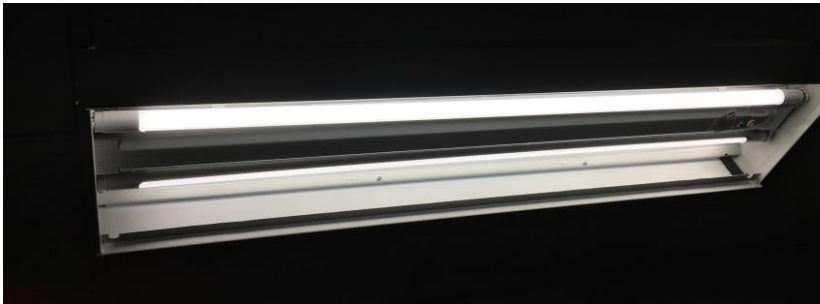
July 26, 2018

East Islip Union Free School District *Energy Performance Contract*

Honeywell
THE POWER OF **CONNECTED**

ECM 1: Lighting and Lighting Controls Upgrade

- Installed over 21,200 new lamps
- Installed 389 new occupancy sensors
- Installed 21 new vending machine power saver controls



ECM 2: Burner Controls Upgrade

- Upgraded burner controls for 6 different boilers across 3 buildings:
 - Early Childcare Center/District Office
 - Ruth C. Kinney Elementary School
 - Timber Point Elementary School
- Controls and maps fuel/air ratio during burner startup with LCD display
- Optimization of the fuel/air ratio saves energy during startup

ECM 2: Burner Controls Upgrade



ECM 3: Destratification Fan Installation

- Installed 14 new destratification fans in 5 different schools
 - Connetquot Elementary School
 - East Islip High School (Aux Gym)
 - East Islip Middle School (Aux Gym)
 - East Islip Middle School (Main Gym)
 - John F. Kennedy Elementary School
 - Ruth C. Kinney Elementary School

ECM 3: Destratification Fan Installation



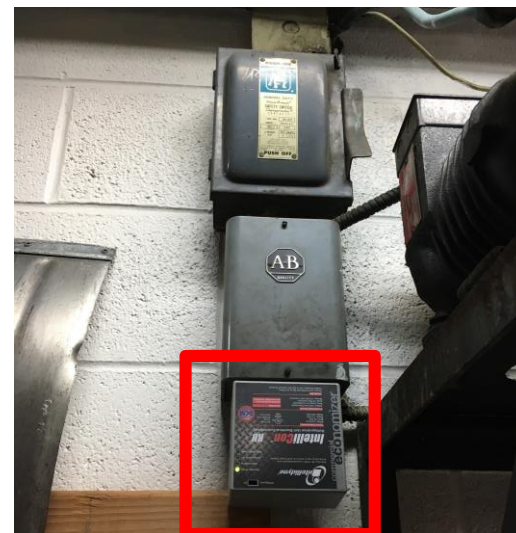
ECM 4: Air Handling Unit Replacement

- Installed new air handling unit for high school auxiliary gym



ECM 5: Freezer Controls Installation

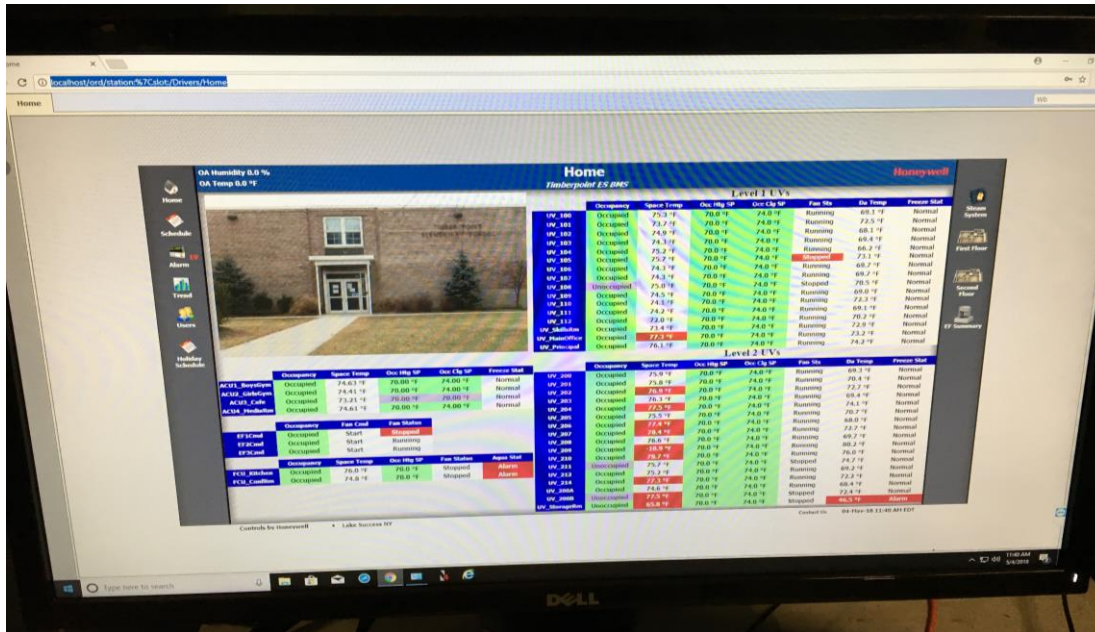
- Installed a freezer condenser controller in:
 - Connetquot Elementary School
 - Early Childcare Center & District Office
 - East Islip High School
 - East Islip Middle School
 - John F. Kennedy Elementary School
 - Ruth C. Kinney Elementary School
 - Timber Point Elementary School



ECM 6&7: Building Management System Upgrades / Demand Control Ventilation

- Building Management System (BMS) upgrade includes:
 - Replacement of existing pneumatic controls with DDC controls
 - Replacement of all pneumatically controlled steam and hot water valves
 - Integration of existing DDC controls to new BMS
 - Installation of plug load controllers on certain electronics and appliances
- Demand Control Ventilation (DCV) involves programming logic for exhaust equipment to run based on the space's CO₂ content rather than running equipment on a specific schedule. This logic optimizes the amount of hours this equipment will run year round.

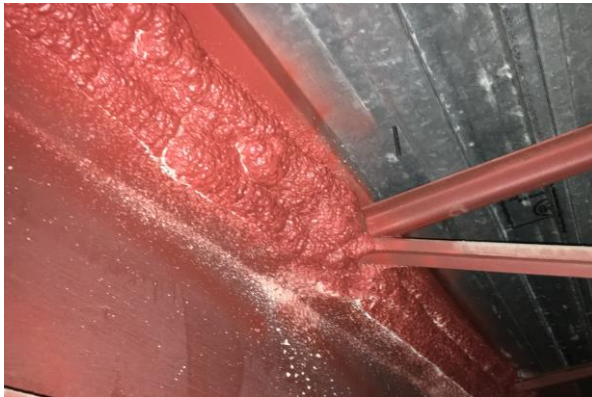
ECM 6&7: Building Management System Upgrades / Demand Control Ventilation



ECM 8: Building Envelope Improvements

- Building envelope improvements were made to buildings district-wide including:
 - Installing foam roof/wall joint insulation with fire resistant coating
 - Caulking window perimeter framing
 - Weather stripping garage doors
 - Sealing gaps around roof ventilation equipment
 - Fire stopping wall penetrations
 - Weatherizing exterior doors (Middle School Only)
 - Installing insulative foam boards above exterior vestibule doors (High School Only)

ECM 8: Building Envelope Improvements



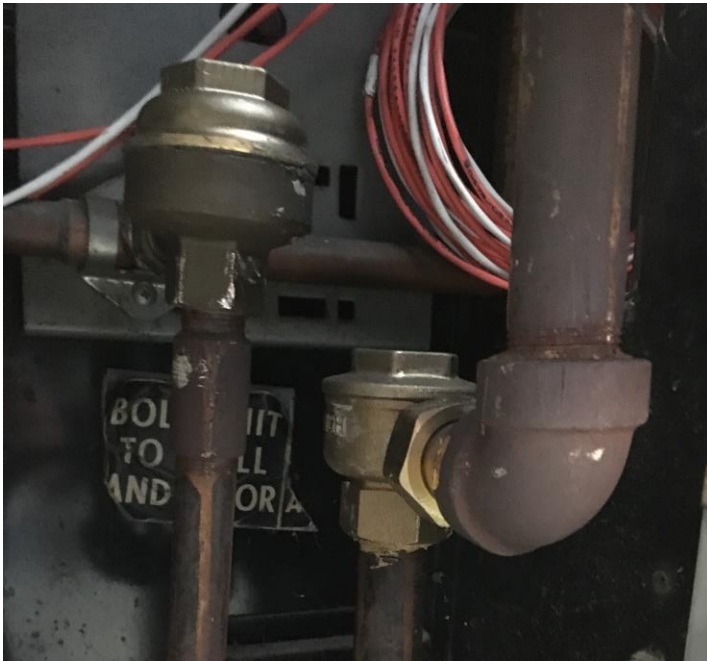
ECM 9: Install Pipe Insulation

- Installed 3,752 linear feet of pipe insulation on uninsulated pipes and boilers
- Installed 213 custom insulative jackets on valves, pumps, etc...



ECM 11: Steam Trap Replacement

- Replaced approximately 60 F&T and bucket steam traps
- Rebuilt approximately 200 thermostatic steam traps



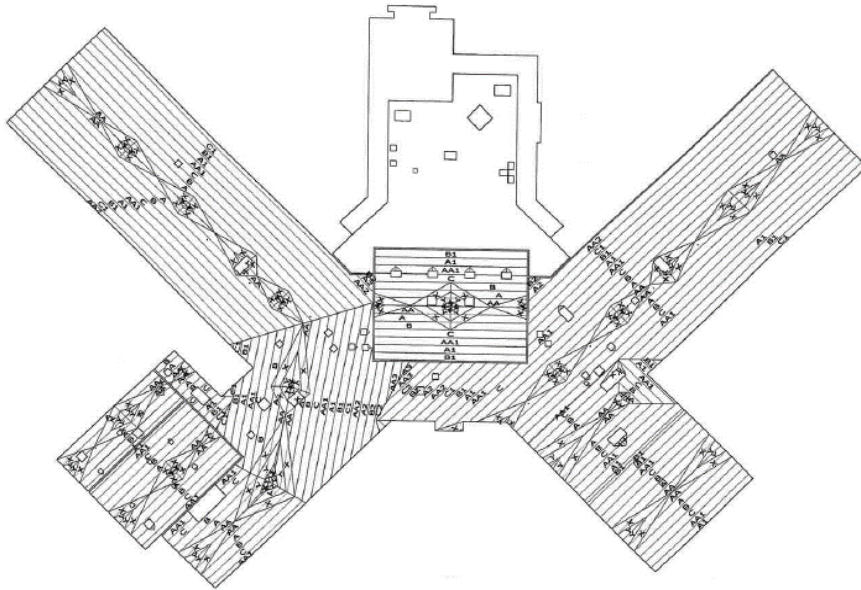
ECM 13: Window Film Installation

- Installed approximately 9,700 square feet of tinted window film to relieve spaces of passive solar heating.



ECM 14: Roof Replacement

- Replaced approximately 50,000 square feet of roof at Connetquot Elementary School.



Thank You!

Honeywell is building a smarter, safer,
and more sustainable world

THAT'S THE POWER OF **CONNECTED**
THAT'S THE POWER OF **HONEYWELL**

Connected Aircraft • Connected Automobile • Connected Home • Connected Building
Connected Plant • Connected Supply Chain • Connected Worker

Honeywell

THE POWER OF **CONNECTED**