



# Summer 2025 CAMP OFFERINGS

Learn about camps offered at Madison School District during summer break 2025! In addition to the Madison Adventure Club (MAC) summer camp, Madison offers a variety of camps provided on-site by third-party organizations for students to participate in. These camps specialize in a variety of areas such as art, science, technology, and more.



# TABLE OF CONTENTS

**PAGES 3-5 | District-operated camps located at Madison Heights and Madison No. 1**

**PAGES 5-19 | Vendor-operated camps located at Madison Park**



*Please note: there will be no transportation provided by Madison between campuses.*

# MADISON COMMUNITY ED SUMMER CAMP

Join Us for a Summer Filled with Fun,  
Learning, and Exploration!



## Camp Highlights:

- Field Trips
- Creative Arts & Crafts
- Games
- Physical Activities

## Locations:

Prek-1st: Madison Heights

2nd-8th: Madison #1

## Registration Link:

<https://madisonaz.arux.app>





# SPANISH IMMERSION SUMMER CAMP



## JUNE 2-18, 2025

**REGISTRATION IS AVAILABLE FOR THE FULL THREE WEEKS OR INDIVIDUAL WEEKS**

Madison School District's Spanish Immersion Summer Camp offers students entering Kindergarten through 4th grade the opportunity to strengthen their Spanish language skills through full immersion.

Students will be exposed to the language, food, music, culture and traditions through fun, hands-on activities and games from Spanish speaking countries. Students will also complete weekly challenges using their communication skills in Spanish.



**LOCATION:** Madison Heights Elementary

**DATES & TIMES:** June 2 - 18 | Monday - Thursday | 8 a.m. - 12 p.m.

**COST:** \$160 for weeks 1 & 2, \$120 for week 3 (no camp on 6/19 for Juneteenth)

**\*\*A 2.99% processing fee and \$0.39 transaction fee will apply to all program payments.**

**\*\*15% discount if siblings are enrolled**

**\*\*No transportation will be provided from Heights to No. 1 Middle School for 2nd-4th graders enrolled in the Community Education MSC Summer Camp.**

**\*\*Morning and afternoon snacks are provided.**

**\*\*Open enrollment will be available on Feb. 12th, 2025 at 8:00am**



**[MADISONAZ.ORG/SPANISHCAMP](https://madisonaz.org/spanishcamp)**



# ITINERARY:



## Schedule:

8:00-8:30 Welcome/Stations

8:30-9:30 Weekly Challenge

9:30-9:50 Snack and Free play

9:50-10:50 Cultural Exploration

10:50-11:20 Game Room

11:20-11:50 Traditional Games from Spanish speaking countries & snack

11:50-12:00 Clean up / Dismissal



## Week Challenge:

Exciting weekly challenges await! Each week, students will work in teams to complete fun and engaging challenges designed to spark creativity, collaboration, and critical thinking—all in Spanish! Stay tuned for more details on the specific challenges for each grade level!



## Cultural Explorations: (all grade levels)

Each week, students will explore a different Spanish speaking country. During this time, students will have the opportunity to take a virtual tour to explore main landmarks, learn about their music, traditions, food and play traditional children's games.

Week 1: Costa Rica

Week 2: Ecuador

Week 3: Chile



[MADISONAZ.ORG/SPANISHCAMP](https://madisonaz.org/spanishcamp)



# CULTURAL SPANISH CAMP

for GRADES K-5 at  
Madison Park Middle School!

2025



PASSPORT to  
SOUTH AMERICA!



ENROLL TODAY

Camp location at Madison Park Middle School  
1431 E. Campbell Ave. Phoenix, AZ 85014

ABSí is an **Interactive Spanish Program** that teaches students basic vocabulary and common phrases through hands-on activities.

In this camp, students will learn the geographical and cultural information of South American countries through hands on activities that involve art, crafts and games. They will also build their vocabulary and basic everyday phrases in "Español"!

## PICK YOUR WEEKS!



**CHILE | May 27 - 29**

9:00 AM - 12:00 PM

**\$115.00**



**PERU | June 2 - 5**

9:00 AM - 12:00 PM

**\$150.00**



**ARGENTINA | June 9 - 12**

9:00 AM - 12:00 PM

**\$150.00**



**BRAZIL | June 16 - 18**

9:00 AM - 12:00 PM

**\$115.00**

**A B Sí**  
**Spanish**  
Building Bilingual Minds

### Contact:

Nycole Ahumada, M., Ed.

480.241.3840

nycole@absispanish.com

Visit [www.absiSpanish.com](http://www.absiSpanish.com)

[www.spanishlessonsforkids.net/madison-park-summer](http://www.spanishlessonsforkids.net/madison-park-summer)



# MADISON SUMMER BREAK CAMP



## INDOOR MULTI-SPORT SUMMER CAMP!!

Experience our **FUN, ENERGY FILLED** camp focusing on ball-handling skills, teamwork, sportsmanship and love for the game! Beginner and intermediate players in grades K-6 are invited to attend. Our experienced coaches will instruct children on skills each day as they play flag football, soccer, basketball, wiffle ball, field hockey, kickball and more.

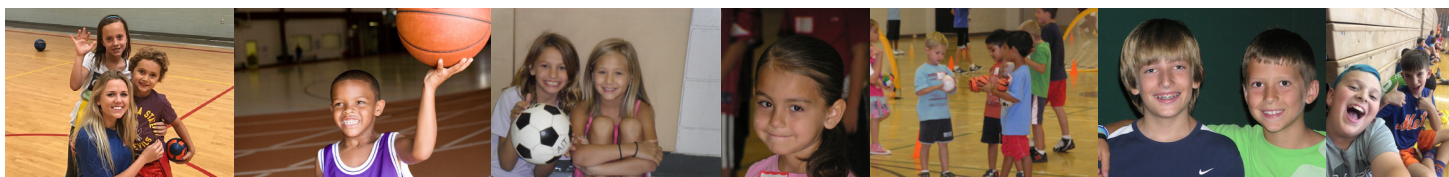
### LOCATION / TIMES / FEES / DATES:

Athletes In Training Sports Camp

Madison Parks Middle School / 1431 E Campbell Ave, Phoenix, AZ 85014

M-TH / 9:00am - 4:00pm / 9:00am - 12:00pm / 1:00pm - 4:00pm

\$Check Website for prices



### Dates:

Week 1- May 27th- 29th

Week 2- June 2nd- 5th

Week 3- June 9th- 12th

Week 4- June 16th- 18th

Week 5- June 23rd- 26th

Week 6- June 30th- July 3rd

Week 7- July 7th- 10th

Week 8- July 14th- 17th

Week 9- July 21st- 24th



EMAIL: [AIT@ATHLETESINTRAINING.COM](mailto:AIT@ATHLETESINTRAINING.COM) \* PHONE: (480) 786-9454

REGISTER SOON: [WWW.ATHLETESINTRAINING.COM/CAMPS/](http://WWW.ATHLETESINTRAINING.COM/CAMPS/)





# Summer Day Camps

**Keep your brain turned on... with chess, fun and games all summer long!**

Join us this Summer for tons of challenging chess lessons, exciting games, and cool prizes. You'll improve your chess skills, meet new friends, and work out your most powerful muscle- your brain!



## Location

Madison Park Middle School  
1431 E. Campbell Ave.  
Phoenix, AZ 85014



## Information

<https://www.madisonaz.org> or <https://chesswizards.com>



## Date and time

July 7th to July 10th or July 21st to July 24th

Half Day: 9:00am to 12:00pm or 12:00pm to 3:00pm

Full Day: 9:00am to 3:00pm



## Price

Half Day: \$257.00

Full Day: \$372.00

**Kindergartners  
to 6th grade  
Chess Players  
Welcome!  
All Skill Levels  
Welcome!**



**SCAN**  
TO REGISTER



+1866-949-4386



[chesswizards.com](https://chesswizards.com)



Coding  
with Kids

# CODING CAMPS

Madison School District

Ages  
5-12



## ***"THE BEST CAMP EVER"***

3-4 day summer programs  
Expert coding instructors  
Max. 8 students per teacher

**\*Early bird discount expires May 31**

**\*Sibling discounts available!**

LOVED BY  
**60,000**  
YOUNG CODERS

Since 2014

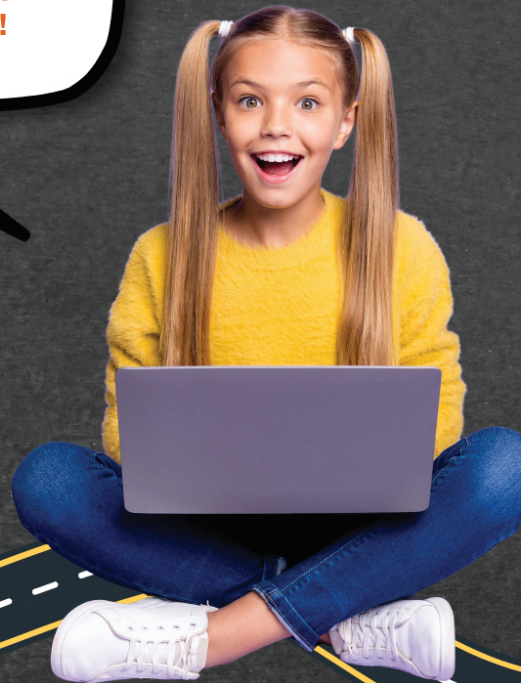
► **Choose from our fun Coder's Pathways®**

Python, Robotics, Scratch & more!

► **Grow from beginner to advanced**

Dive into something new or level up  
your coding skills!

► **Learn skills for life**



**SCAN ME!**

Prices & registrations



Join us for a summer of coding fun!

- Camps offered for students ages 5-12.
- Pricing starts at \$131 for **half-day** camps.
- Out of town this summer? Check out our live online camps for even more options!



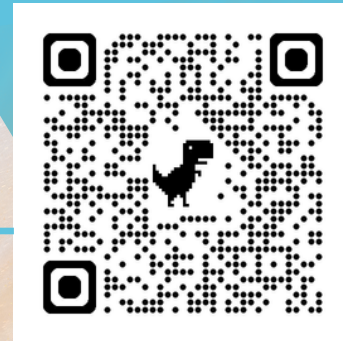
[www.CodingWithKids.com](http://www.CodingWithKids.com)





# DRONE TOGETHER

**DRONE FLYING SUMMER CAMPS  
MADISON SCHOOL DISTRICT**



**SCAN THE QR CODE TO REGISTER**

## SUMMER FLYING CAMPS

**Madison Park Middle School**

**May 27-29**

**June 16-18**

**Tricks  
Team Flying Challenges  
Flying Games  
Obstacle and Course Design  
Larger Drones**

**Bringing the Future to People...Today!**





# DRONE TOGETHER

## STEM Robotics Summer Camp MADISON SCHOOL DISTRICT JULY 14-17

A beginner camp that has it all:

- Building and Design
- Engineering
- Basic Robotics and Drones
- Games and Puzzles
- Problem Solving

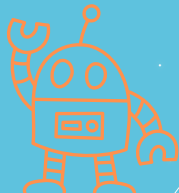


STEM TAUGHT ON-SITE!

**IT'S NOT TOO LATE**  
Register today by  
scanning the QR code



(713) 927-3386  
scott@dronetogether.com  
www.dronetogether.com







## Mad Science at Madison Park Middle School

Mad Science Spring camp programs are not only educational, but they're also loads of fun! Children engage in hands-on activities, watch spectacular demonstrations, and explore scientific concepts for themselves.

**Age Range: K – 5th**

**Time: 9:00 – 4:00 PM Tuesday through Thursday**

**Cost: \$240 per child**

**Dates: May 27<sup>th</sup> through May 29<sup>th</sup>**

### Science Explorations

Discover how science will help protect our planet. Discover how to send secret messages to your friends using special codes. Play the nature scavenger hunt that combines science exploration with the animal kingdom. Young astronauts explore the mysteries of the solar system.

### Includes these lessons:

- Earth Awareness
- Nature
- Mad Messages
- Space

**Register here:**

**Enroll through <https://nephoenix.madscience.org/>**

**Search for Parents**

**Any Questions call 480-222-2233**

**SPARKING  
IMAGINATIVE  
LEARNING**

ASSEMBLIES

SPECIAL  
EVENTS

AFTER-SCHOOL  
PROGRAMS

VACATION &  
SUMMER PROGRAMS

PRESCHOOL  
PROGRAMS

BIRTHDAY  
PARTIES

WORKSHOPS

[WWW.MADSCIENCE.ORG](http://WWW.MADSCIENCE.ORG)





## Mad Science at Madison Park Middle School

Mad Science Spring camp programs are not only educational, but they're also loads of fun! Children engage in hands-on activities, watch spectacular demonstrations, and explore scientific concepts for themselves.

**Age Range: K – 5th**

**Time: 1:00 – 4:00 PM Monday through Thursday**

**Cost: \$188 per child**

**Dates: June 9<sup>th</sup> through June 12<sup>th</sup>**

### Spring Camp – Moving with Science

Do you love to build, design and fix things? Are you curious about how a reaction happens? What is the true nature of birds and beasts? Campers explore activities in engineering, math, chemistry, and biology that they could encounter in their daily life. They will see just how natural science is in our world!

#### Includes these lessons:

- Junior Engineers
- Machine Mania
- The Birds & The Beasts
- Shutterbugs!

**Register here:**

**Enroll through <https://nephoenix.madscience.org/>**

**Search for Parents**

**Any Questions call 480-222-2233**

**SPARKING  
IMAGINATIVE  
LEARNING**

ASSEMBLIES

SPECIAL  
EVENTS

AFTER-SCHOOL  
PROGRAMS

VACATION &  
SUMMER PROGRAMS

PRESCHOOL  
PROGRAMS

BIRTHDAY  
PARTIES

WORKSHOPS

[WWW.MADSCIENCE.ORG](http://WWW.MADSCIENCE.ORG)





## Mad Science at Madison Park Middle School

Mad Science Spring camp programs are not only educational, but they're also loads of fun! Children engage in hands-on activities, watch spectacular demonstrations, and explore scientific concepts for themselves.

**Age Range: K – 5th**

**Time: 1:00 – 4:00 PM Monday through Thursday**

**Cost: \$188 per child**

**Dates: June 23<sup>rd</sup> through June 26<sup>th</sup>**

### Spring Camp – Chemicals, Cells and Crime

Turn chemistry inside and out in this hands-on summer science adventure! Campers will be looking closely at cells and stepping away to see the big picture. From the organ systems that make our bodies work to using chemical reactions to solve a crime, campers explore a composition of science knowledge and scientific techniques.

**Includes these lessons:**

- The Organ Trail
- At The Scene of the Crime
- Radical Reactions
- Chemical Counting

**Register here:**

**Enroll through <https://nephoenix.madscience.org/>**

**Search for Parents**

**Any Questions call 480-222-2233**

**SPARKING  
IMAGINATIVE  
LEARNING**

ASSEMBLIES

SPECIAL  
EVENTS

AFTER-SCHOOL  
PROGRAMS

VACATION &  
SUMMER PROGRAMS

PRESCHOOL  
PROGRAMS

BIRTHDAY  
PARTIES

WORKSHOPS

[WWW.MADSCIENCE.ORG](http://WWW.MADSCIENCE.ORG)





## Mad Science at Madison Park Middle School

Mad Science Spring camp programs are not only educational, but they're also loads of fun! Children engage in hands-on activities, watch spectacular demonstrations, and explore scientific concepts for themselves.

**Age Range: K – 5th**

**Time: 1:00 – 4:00 PM Monday through Thursday**

**Cost: \$188 per child**

**Dates: July 7<sup>th</sup> through July 10<sup>th</sup>**

Asto Innovator campers use creative and collaborative skills to design a mission patch, train like an astronaut, and solve real-world engineering problems using spinoff technology, just like NASA astronauts working together on a mission. They propose answers to questions like “How could space suit cooling tubes be used to solve a problem here on Earth? How could robotic arms help make our world a better place?” Then, they create a storyboard and presentation to share their spinoff project and work on their science communication skills.

**Includes these lessons:**

- NASA engineers
- NASA accomplishments
- NASA Design Process
- NASA Technology

**Register here:**

**Enroll through <https://nephoenix.madscience.org/>**

**Search for Parents**

**Any Questions call 480-222-2233**

**SPARKING  
IMAGINATIVE  
LEARNING**

**ASSEMBLIES**

**SPECIAL  
EVENTS**

**AFTER-SCHOOL  
PROGRAMS**

**VACATION &  
SUMMER PROGRAMS**

**PRESCHOOL  
PROGRAMS**

**BIRTHDAY  
PARTIES**

**WORKSHOPS**

**[WWW.MADSCIENCE.ORG](http://WWW.MADSCIENCE.ORG)**

# **LEGO® Engineering Summer Camps**

**At Madison School District  
Ages 5-11 9 am to 12 pm**



## **Adventures in STEM using LEGO Materials**

May 26-May 29  
\$120

## **Minecraft Engineering using LEGO Materials**

June 2-June 5  
\$160

## **Pokemon Engineering using LEGO Materials**

June 23-June 26  
\$160



## **STEM Discovery using LEGO Materials**

July 7-July 10  
\$160

## **Radical Rides using LEGO Materials**

July 14-July 17  
\$160

## **Wildlife Wonders using LEGO Materials**

July 21-June 24  
\$160

At Play-Well TEKnologies, students are encouraged to unleash their inner engineer as they design and build with tens of thousands of LEGO® pieces and the guidance of our passionate instructors. They will explore fundamental STEM concepts as they learn to collaborate and create without fear of mistakes. The experience is joyful, the impact long lasting.



Learn more or sign up at [play-well.org](http://play-well.org)  
Questions? Contact Ariana at  
[ariana@play-well.org](mailto:ariana@play-well.org)  
602.818.2773



LEGO®, the LEGO logo, and the brick and knob configuration are trademarks of the LEGO group.  
© 2018 The LEGO Group. These programs are not authorized, sponsored or endorsed by the LEGO Group.





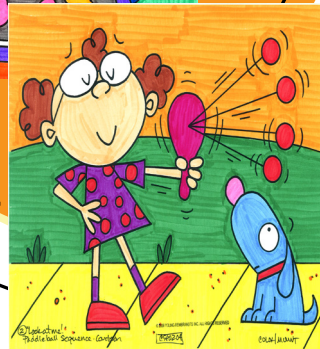
# SUMMER BREAK

## Drawing Classes for kids

at

### Madison Park Middle School

located at: 1431 E. Campbell Ave. Phoenix 85014



Let your child's creativity bloom with Young Rembrandts! Our new lessons will guide them through the art of Still Life, the dynamics of the Color Wheel, and more. They'll fall in love with drawing Cartoon Style silly faces and graphic scenes, perfect for the season. It's a treasure chest of artistic exploration in the Young Rembrandts classroom. Sign up now and watch as their imagination and skills soar to new heights!

- We will draw simplified figures doing a variety of activities.
- Cartoon drawings will feature multiple characters and objects so we will stress good composition and balance.
- We will highlight the importance of anime/manga facial proportions as well as -
- The dimensions and the placement of the facial features.

These and more to learn together. Join us!

### ENROLLMENT AT



[www.youngrembrandts.com/centralphxaz/view-classes-enroll/](http://www.youngrembrandts.com/centralphxaz/view-classes-enroll/)



### Camp Dates May 27 - 29

### Tuesday - Thursday Drawing Schedule

Learn how to draw people.	9-10am
Learn how to draw cartoon style animals.	10-11am
Learn how to draw Spaceships.	12-1pm
Learn how to draw Anime Style people.	1-2pm
Learn how to draw DOGS.	2-3pm
Learn how to draw animals from the Zoo.	3-4pm



### TUITION

Half Day Tuesday-Thursday.  
Any 3 classes - you can choose your favorite classes and times - \$165

Follow us. Like us. Watch us.



### ENROLL NOW!

### TAKE A LOOK AT OUR WEBSITE



# SUMMER BREAK

## Drawing Classes for kids



at

## Madison Park Middle School

located at: 1431 E. Campbell  
Ave. Phoenix 85014



Let your child's creativity bloom with Young Rembrandts! Our new lessons will guide them through the art of Still Life, the dynamics of the Color Wheel, and more. They'll fall in love with drawing Cartoon Style silly faces and graphic scenes, perfect for the season. It's a treasure chest of artistic exploration in the Young Rembrandts classroom. Sign up now and watch as their imagination and skills soar to new heights!

- We will draw simplified figures doing a variety of activities.
- Cartoon drawings will feature multiple characters and objects so we will stress good composition and balance.
- We will highlight the importance of anime/manga facial proportions as well as -
- The dimensions and the placement of the facial features.

This and more to learn together. Join us!

### ENROLLMENT AT



[www.youngrembrandts.com/centralphxaz/view-classes-enroll/](http://www.youngrembrandts.com/centralphxaz/view-classes-enroll/)



**Camp Dates June 2 - 4**  
**ALL YOU CAN DRAW!**

**CHOOSE YOUR 3 CLASSES!**

### Monday-Wednesday Drawing Schedule

Learn how to draw people in fashion style.	9-10am
Learn how to draw cartoon style animals.	10-11am
Learn how to draw your favorite PETS..	12 -1pm
Learn how to draw Anime Style superheroes.	1 - 2pm
Learn how to draw MONSTERS and CREATURES.	2 -3pm
Learn how to draw animals from the Zoo.	3 - 4pm



### TUITION

Half Day Monday-Wednesday.  
Any 3 classes - you can choose your favorite classes and times - \$165

Follow us. Like us. Watch us.



**ENROLL NOW!**

**TAKE A LOOK AT OUR WEBSITE**









# SUMMER BREAK

## Drawing Classes for kids

at  
**Madison Park Middle School**  
located at: 1431 E. Campbell Ave.  
Phoenix, AZ 85014

Let your child's creativity bloom with Young Rembrandts! Our new lessons will guide them through the art of Still Life, the dynamics of the Color Wheel, and more. They'll fall in love with drawing Cartoon Style silly faces and graphic scenes, perfect for the season. It's a treasure chest of artistic exploration in the Young Rembrandts classroom. Sign up now and watch as their imagination and skills soar to new heights!

- We will draw simplified figures doing a variety of activities.
- Cartoon drawings will feature multiple characters and objects so we will stress good composition and balance.
- We will highlight the importance of anime/manga facial proportions.
- The dimensions and the placement of the facial features.

This and more to learn together! Join us!

### ENROLLMENT AT



[www.youngrembrandts.com/centralphxaz/view-classes-enroll/](http://www.youngrembrandts.com/centralphxaz/view-classes-enroll/)



**Camp Dates June 9-11**

**ALL YOU CAN DRAW!**

**CHOOSE YOUR 3 CLASSES!**

### Half Day Drawing Schedule

Learn how to draw Cartoon style people	9-10 am
Learn how to draw cartoon style animals.	10-11 am
Learn how to draw ANIMALS in the water.	12 -1 pm
Learn how to draw Anime	1 - 2 pm
Learn how to draw ALIENS.	2 -3 pm
Learn how to draw animals from Africa.	3 - 4 pm



### TUITION

Half Day Monday-Wednesday.  
Any 3 classes - you can choose your favorite classes and times - \$165

Follow us. Like us. Watch us.



**ENROLL NOW!**

**TAKE A LOOK AT OUR WEBSITE**





**MADISONAZ.ORG**

**If you have any questions or for more information, please contact  
our Community Education department at (602)-664-7580**