

Example Project Scope of Work for pricing calculations:

Scope of Work:

Install 1,723' x 8' tall 9-gauge core, 8-gauge finish black vinyl coated chain link fence.

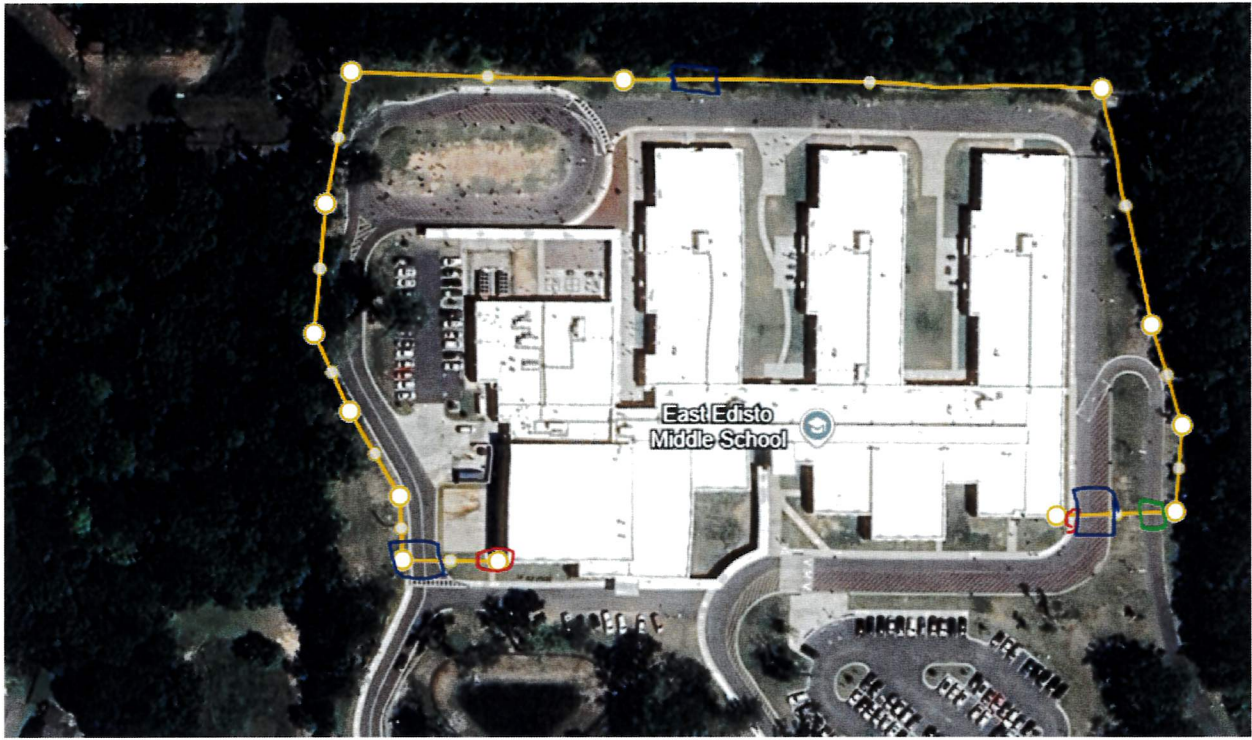
Install qty three (3) 16' double swing gates –9-gauge core, 8-gauge finish black vinyl coated chain link fence

Install qty one (1) 12' double swing gate – 9-gauge core, 8-gauge finish black vinyl coated chain link fence

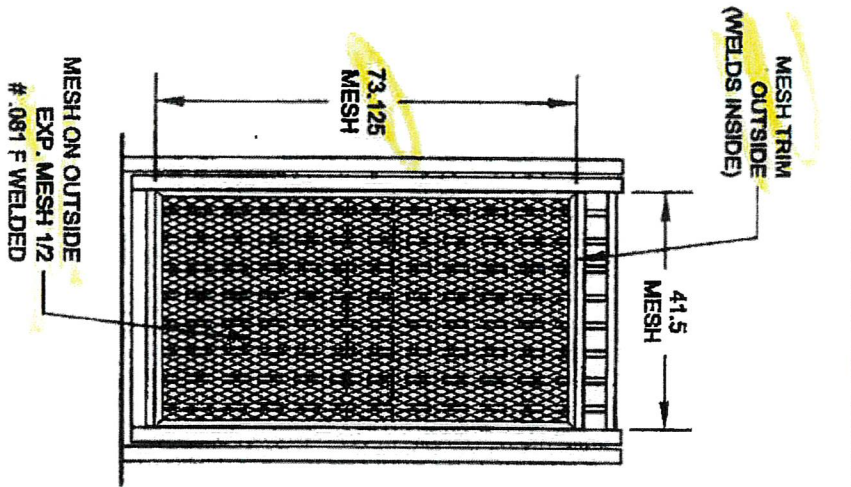
Install qty two (2) Panic Bar gates (See attached drawings for specs)

On the satellite view attached:

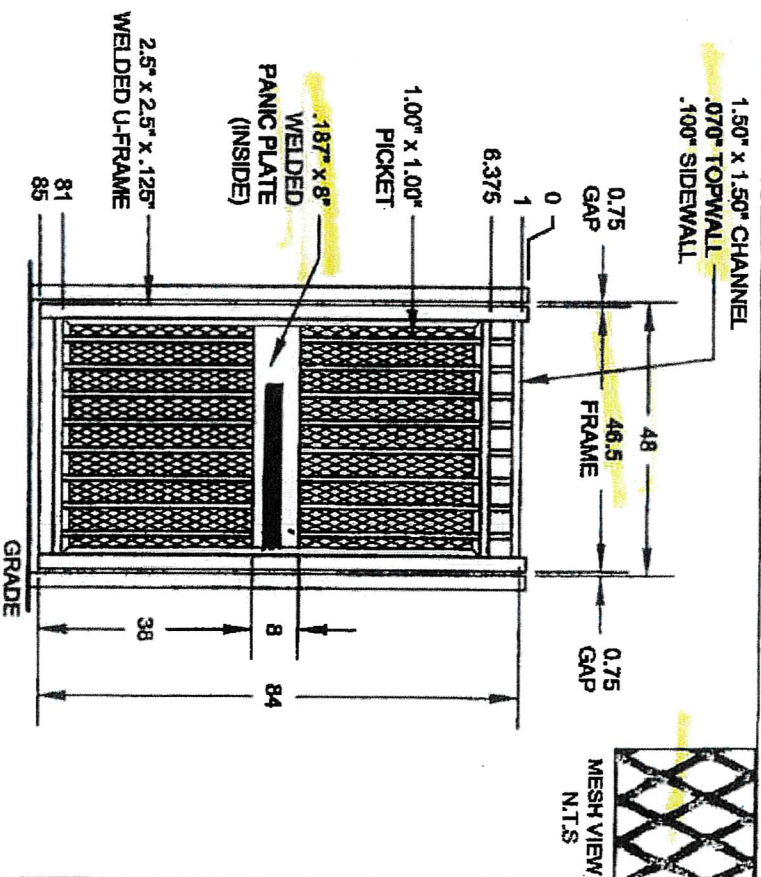
- Yellow indicates location of the 8' Fence
- Blue indicates location of double 8' swing gates
- Green indicates location of a double 6' swing gate
- Red indicates location of panic bar



FOUNDAMENTAL Panic Bar Gate WITH MESH



GATE VIEW FROM OUTSIDE

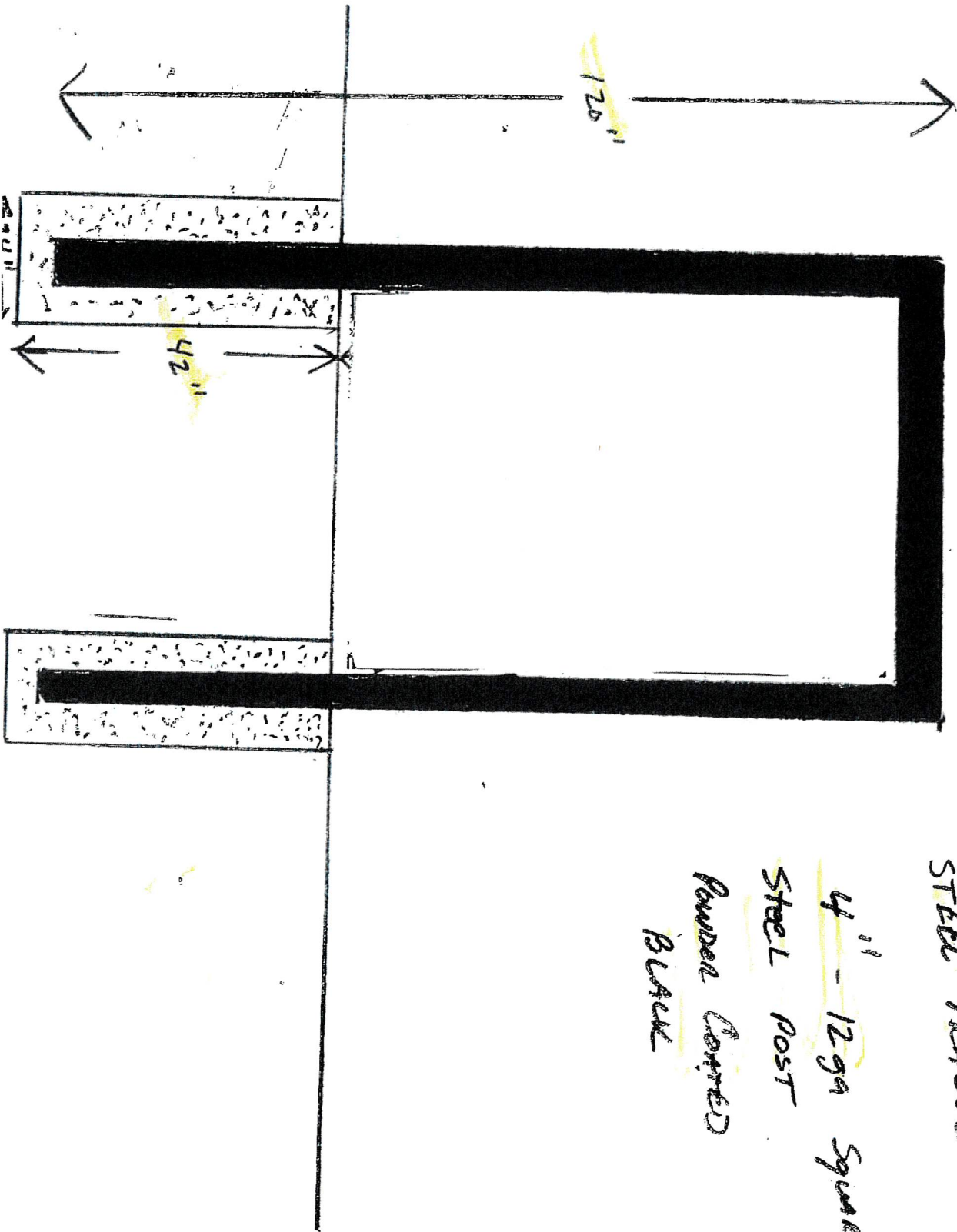


GATE VIEW FROM INSIDE

WARRANTY

<p>THE INFORMATION CONTAINED IN THIS DRAWING IS PROTECTED BY COPYRIGHT AND PATENT LAWS OF THE UNITED STATES AND OTHER COUNTRIES. ANY REPRODUCTION IN PART OR AS A WHOLE WITHOUT WRITTEN PERMISSION IS PROHIBITED.</p>		<p>HINGE & LOCKBOX LOCATIONS</p> <p>IF YOUR GATE REQUIRES A LOCKBOX OR SPECIAL HINGES, PLEASE NOTE HINGE SIDE, SWING AND LOCATION OF LOCKBOX.</p>		<p>QUANTITY: 1</p> <p>DATE: 4/11/2018</p>		<p>PROJECT NAME: BARRETTE Outdoor Living</p> <p>PROJECT NUMBER: Q18041109-R0</p>	
<p>EXAMPLE</p> <p>WELDS INSIDE</p> <p>WELDS OUTSIDE</p>		<p>GATE</p> <p>WELDS INSIDE</p> <p>WELDS OUTSIDE</p>		<p>3-CH 84" INDUSTRIAL W/ MESH - PANIC PLATE</p> <p>APPROVAL SIGNATURE (REQUIRED):</p>		<p>48" GATE ASCOT</p>	

When you quote please quote Q18041109-R0-dwg, 4/11/2018 12:11:54 PM, 31



WELDED
STEEL HEADER

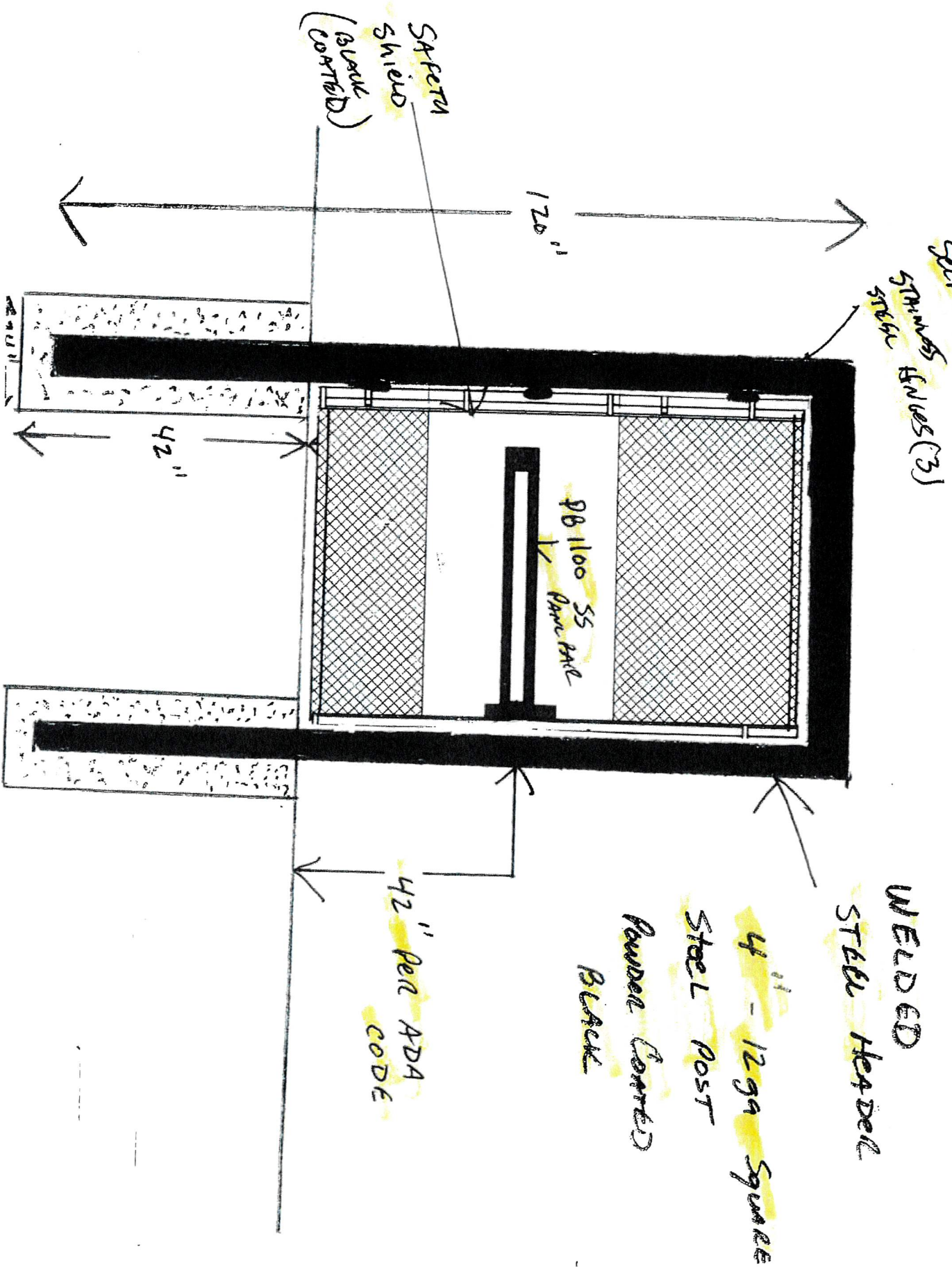
4" - 12ga Square

STEEL POST

POWDER COATED

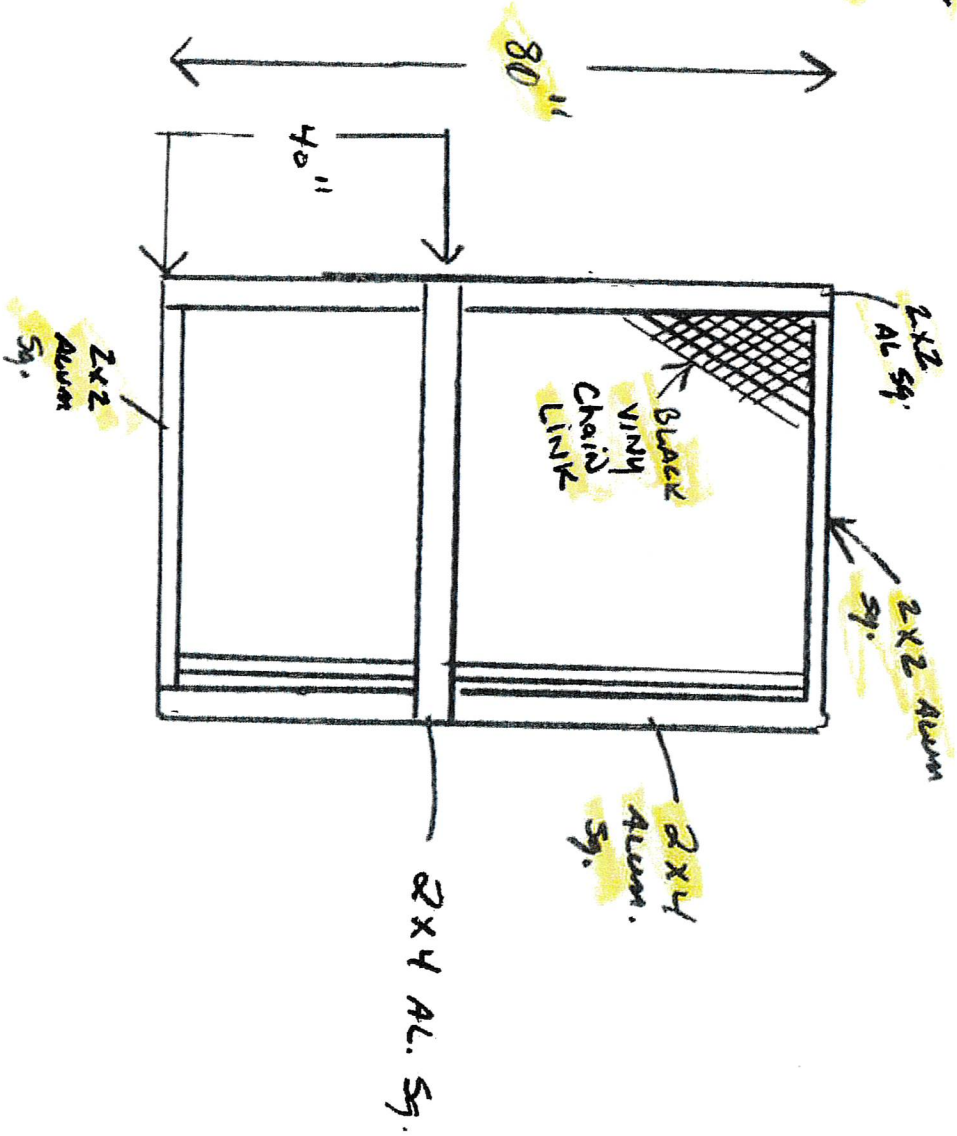
BLACK

48" Panic Bar Gate



WELDED
ALUMINUM

PANIC
BAR
GATE



A8.51	<p>10 CHAIN LINK GATE ELEVATION AT EXIT DEVICE</p>
3/4" = 1'-0"	

32 31 13

CHAIN LINK FENCES & GATES, SEE CIVIL

ALUMINUM MOUNTING PLATE

08 71 00 EXIT DEVICE

2' - 0"

3' - 0"

A