The background of the slide is a photograph of a blue track and field starting block. The block is white with yellow and blue markings. It is positioned on a blue track with white lane lines. The text is overlaid on a semi-transparent white band across the middle of the image.

OPEN CORE SUBMISSIONS 2024-2025

REACHING THE FINISH LINE

SESSION AGENDA

ECDS PK

SELA

RF TRACKER

CHILD FIND





Early Childhood Data System Prekindergarten

ECDS PK – Guidance Update

- Guidance found in DR6 of Section Entity has been updated for the PKSchoolType (E1555) concerning descriptor codes '11' and '12'.
 - This school type descriptor **WILL** require the LEA to submit a Child Care Operation Number, if partnering with a licensed provider. If the partnering provider is **NOT** licensed, eight zeros, "00000000", must be entered.

Section Entity - DR6

DR6

The following data elements are reported as part of the ECDS PK submission and only reported for the PK CourseCode (01010000).

PKSchoolType (E1555) indicates the type of prekindergarten program that is offered.

PKSchoolType Descriptor	Short Description	Description
01	Non-Public Pre-K Head Start	Standalone Head Start not associated with a school district.
10	Non-Public Pre-K	Private prekindergarten provider not associated with a school district.
11	In-District Charter Partnership	Prekindergarten program that is operated through an in-district charter partnership. The board of the LEA has authorized a non-profit organization, government entity, institute of higher education, or an existing charter as an in-district charter. (This PKSchoolType descriptor WILL require the LEA to submit a ChildCareOperationNumber (E1726), if partnering with a licensed provider. If the partnering provider is NOT licensed, eight zeros, "00000000", must be entered.)
12	Public Pre-K Head Start (Non-LEA Grantee)	Public prekindergarten programs that partner with a Head Start program and the Head Start grantee is not an LEA. (This PKSchoolType descriptor WILL require the LEA to submit a ChildCareOperationNumber (E1726), if partnering with a licensed provider. If the partnering provider is NOT licensed, eight zeros, "00000000", must be entered.)
99	Other	None of the descriptors above describe the LEA implemented program.

TitleOfAssessment
C312

- Changes to the TitleOfAssessment descriptor table
- [Reference Slide 32](#)

PKTeacherRequirement
C207

- Two new descriptors added to the PKTeacherRequirement descriptor table
 - 98 – PK teacher in a school district no additional HQPK Qualification
 - 99 – Emp PK teacher in LEA no additional HQPK Qualification
- Rules impacted by the change
 - 30040-0049
 - 30040-0057

- ECDO-000-006 Early Childhood PK Data Submission
 - Updated to include Teacher “Inst Strt” and “Inst End”
 - **NEW** Report logic updated to adjust calculations for “# Days in Class”, “Total Days in a PK Program”, and “Student in HQ Program” when the optional StudentSection.EndDate data element is not provided (reference slide 36)
- ECDO-000-010 Early Childhood High-Quality PK Components Completion
 - New columns added to reflect the two new descriptor codes for PKTeacherRequirement

For the 2024-2025 school year, TEA will no longer collect data from private prekindergarten schools.

- No current known issues as of March 20, 2025.



Question Quick Stop



Special Education Language Acquisition

ToolOrAssessmentUsed
C320

- Updates to the descriptor table
- Two new descriptors “RS” and “ES”
- One descriptor deleted “AS”

Descriptor Table Name
Changes

- C318 (*was DC160*) – HearingAmplificationAccess
- C319 (*was DC161*) - HearingAmplificationDailyUse

Current Known Issues - SELA

- No current known issues as of March 20, 2025.



Residential Facility Tracker

RF Tracker Mid-year Checkpoint

- Original mid-year checkpoint – December 13, 2024
- Statewide extension – **January 17, 2025**
- With a few additional extensions, **189** LEAs completed the checkpoint by January 21, 2025.



Reinstated rule: 10025-0001

- ResidentialFacilityId must match an entry registered with the TEA as an active residential facility.

Added new rule: 40115-0013

- ResidentialFacilityId must match an entry registered with TEA as an active residential facility.

Reasoning:

- Ensures that the Residential Facility ID is active, and a valid number assigned by the Special Education Division. If there are no students reported residing in a residential facility during a school year, the residential facility will be inactivated for the next school year.

Current Known Issues – RF Tracker

- No current known issues as of March 20, 2025.



Question Quick Stop



Child Find

Child Find Data Element Updates

EvaluationDelayDays (E1711)

- was STUDENT-ABSENCES-WITHIN-TIMEFRAME

TransitionNotificationDate (E1712)

- was ECI-NOTIFICATION-DATE

TransitionConferenceDate (E1713)

- was ECI-TRANSITION-CONFERENCE-DATE

EligibilityEvaluationDate (E1715)

- was INITIAL-EVALUATION-DATE

SpecialEducationOrganizationResponsibilityAssociation (SEORA)

School ref (where Responsibility (E3051) = '03')

- was CAMPUS-ID-OF-EVALUATION



EligibilityDelayReason (C347)

- was DELAY-REASON-CODE (DC164)

EvaluationDelayReason (C348)

- was DELAY-REASON-CODE (DC164)

Child Find CHANGE to Compliance Timeline

- Change to SPPI-11 compliance calculation for holdover students.
 - The standard SPPI-11 Eligibility Determination compliance timeline for students evaluated less than 30 calendar days before the end of the prior school year has been updated.

OLD: EligibilityDeterminationDate had to be completed no later than the 1st instructional day of the next school year.

NEW: EligibilityDeterminationDate must be completed no later than the **15th** instructional day of the next school year.

Child Find CHANGE to Compliance Timeline



- This change was made in the **February 28, 2025** software release.
 - LEAs that promoted data to Child Find prior to this date should **re-promote** their submission data to re-calculate the compliance in this scenario.
 - The Child Find compliance flowcharts have been updated to reflect this change:
 - [TSDSKB-620: SPPI-11 Compliance Flowchart](#)
 - [TSDSKB-650: Child Find Interactive Flowchart](#)

- OriginalECIServicesDate (E1737)
 - Only reported for children receiving early childhood intervention (ECI) services.
 - Date must come **before the child's 3rd birthday**.
 - Children reported with a date **less than 90 days** before their 3rd birthday will have their compliance calculated through the **SPPI-11** timeline.
 - CHF0-100-002 SPPI-12 Student Compliance Report
 - Review the 'Calc Days Til 3rd Bday Count' column on this report.
 - These children will show up on both the:
 - SPPI-11 reports CHF0-100-001, CHF0-100-003 and CHF0-100-005.
 - and be counted in both the SPPI-12 reports CHF0-100-002 and CHF0-100-004.

Current Known Issues – Child Find

- CalendarCode (E0975) promotion logic issue when a student's latest enrollment campus does not match their evaluation campus.
- CHF0-100-003 TSDS SPPI-11 Aggregate Report
 - Row (a) is counting the total number of students reported in all of Child Find and should only be counting those being reported for SPPI-11.



Question Quick Stop

Data Collection Documentation

RF Tracker

- Available now!

Child Find, ECDS PK, SELA

- 2024-2025 updates coming soon!

A close-up photograph of several hands of various skin tones raised in a gesture of support or agreement. The hands are positioned in the center and right side of the frame, with fingers spread. The background is blurred, suggesting an indoor setting with other people present.

QUESTIONS

ECDS PK Resource Slides #28 to #44



[Return to slide 3](#)

- Early Childhood Education Division
- **Tori Lee** – Division Director
- **Sylina Valdez** – Programs Director
- **Rebecca Matz** – Program and Enrollment Specialist
- **Magali Farooqi** – Early Childhood Assessment Specialist
- **Lauren Gomez** – Curriculum and Instruction Specialist
- **Jennifer Bruning** – Family Engagement Specialist

- Program-related questions can be submitted to the [Early Childhood Education Division Support Portal](#).

PROGRAM AREA UPDATES & GUIDANCE



■ ECDS Kindergarten Assessment Guidance

- Ensure student information is loaded in a timely manner – Programs team will be pulling data on when an LEA begins promoting data to determine if extensions will be granted
- There are no exemptions given for LEAs that do not use one of the two commissioner-approved kindergarten reading instruments (TX-KEA or mCLASS Texas)

■ ECDS Prekindergarten Assessment Update

- New list will be implemented this school year – There are no exemptions given for LEAs that do not administer commissioner-approved pre-k instruments
- There will be no collection of MOY prekindergarten data through ECDS for the 24-25 SY

■ High-Quality Prekindergarten ECDS Reporting Update

- SY 24-25: PK Teacher Requirement code table add'l update to add a “does not meet” code and will generate a fatal error if left blank
- Notes for PK School Type Code updated to address Child Care Operation Number (next slide)
- June 2024- Commissioner's Rule 19 TAC 102.1003 updated to align with HB 2729 and create consistency with Texas Education Code Chapter 29 Subchapter E-1.

PROGRAM AREA UPDATES & GUIDANCE



- [DR6 \(TSDS Web-Enabled Data Standards\)](#) from Notes for PK School Type Code Table have been updated.
- For Codes 11 and 12:
 - This school type code **WILL** require the LEA to submit a Child Care Operation Number, if partnering with a licensed provider. If the partnering provider is **NOT** licensed, eight zeros, "**00000000**", must be entered.)

DATA GOVERNANCE UPDATES



■ SUMMER TRAINING 2024 Descriptor Table Updates:

■ C312 TitleOfAssessment:

■ New Prekindergarten Assessments for 2024-2025 School Year

Table Identification	Name	Date Issued	Date Updated
C312	TitleOfAssessment	03/01/2016	07/01/2024
Descriptor	Short Description	Long Description	
45	COR-E (BOY)	BOY PK COR Advantage English	
46	COR-S (BOY)	BOY PK COR Advantage Spanish	
47	LION-E (BOY)	BOY PK LION for Prekindergarten English	
48	LION-S (BOY)	BOY PK LION for Prekindergarten Spanish	
49	CPALLS-STEM-E (BOY)	BOY PK CPALLS+STEM English	
50	CPALLS-STEM-S (BOY)	BOY PK CPALLS+STEM Spanish	
87	COR-E (EOY)	EOY PK COR Advantage English	
88	COR-S (EOY)	EOY PK COR Advantage Spanish	
89	LION-E (EOY)	EOY PK LION for Prekindergarten English	
90	LION-S (EOY)	EOY PK LION for Prekindergarten Spanish	
91	CPALLS-STEM-E (EOY)	EOY PK CPALLS+STEM English	
92	CPALLS-STEM-S (EOY)	EOY PK CPALLS+STEM Spanish	

DESCRIPTOR TABLE UPDATES



- The following C207 PKTeacherRequirement descriptor table values have been **added**:
 - **98** – Be employed as a prekindergarten teacher in a school district with no additional high-quality prekindergarten qualification
 - **99** – Contract Entity – employed as a prekindergarten teacher in a school district with no additional high-quality prekindergarten qualifications

Table ID	Name	Date Issued	Date Updated
C207	PKTeacherRequirement	03/01/2016	03/01/2024
Descriptor	Short Description	Long Description	
For Teachers in a LEA-provided Prekindergarten Classroom			
	Certification through either MAGTE	Certification offered through a training center accredited by Association Montessori International or through the Montessori Accreditation Council for	
08	At least 5 yrs exp teaching in a nationally accredited child care program or Texas Rising Star Program	At least eight years' experience teaching in a nationally accredited child care program or Texas Rising Star Program	
98	PK teacher in a school district no additional HQPK Qualification	Be employed as a prekindergarten teacher in a school district with no additional high-quality prekindergarten qualification	
For Teachers in a Prekindergarten Classroom provided by an entity with which a school district contract to provide a Prekindergarten program (29.167 (b-1))			
	At least 2 yrs child care prog or TX Rising Star Program	Contract Entity - At least two years' experience of teaching in a nationally accredited child care program or Texas Rising Star Program	
13	At least 2 yrs exp teaching in a nationally accredited child care program or TX Rising Star Program	Contract Entity - At least two years' experience of teaching in a nationally accredited child care program or Texas Rising Star Program	
99	Emp PK teacher in LEA no additional HQPK Qualification	Contract Entity – employed as a prekindergarten teacher in a school district with no additional high-quality prekindergarten qualifications	

REPORT UPDATES



- **SUMMER TRAINING 2024** The following report was updated to accommodate the new values that were added to the PKTeacherRequirement descriptor table for the 2024-2025 school year.
 - ECD0-000-010 Early Childhood High-Quality PK Components Completion

Texas Education Agency ECD0-000-010 vnn.n.n		TSDS EARLY CHILDHOOD HIGH QUALITY PK COMPONENTS COMPLETION ESC-level Data Public Prekindergarten 2022-2023 Prekindergarten																		Friday 9/22/2024 8:00AM Page 1 of 2		
ESC: 999999 - <Region Name>		Additional PK Teacher Qualification For Teachers in LEA-provided PK Classroom										Additional PK Teacher Qualification For Teachers in a PK Classroom Provided by District Contracts						PK Program Evaluation		Student Progress Monitoring		
LEA	LEA ID	# HQ PK Classes	PK Curricula Data Submitted	# Certs Accr by AMI or MACTE 01	Empl as PK Tchr in LEA 03	CDA Cred 05	TSR Trng Prg 06	Degr in ECE or related 07	8+ Yrs Exp Tchng Nat'l Accr CCP or TRSP 08	PK Tchr in District no Addtl HQPK Qual 98	2+ Yrs Exp Tchng Nat'l Accr CCP & CDA or ECE cred 09	2+ Yrs Tchng nat'l accr CCP & cert from AMI or MACTE 10	Empl as PK Tchr in Dist wih PK PDR 11	AS or BS degr in EC or related 12	8+ Yrs Exp Tchng a Nat'l Accr CCP or TRSP 13	Emp PK Tchr in LEA no addtl HQPK Qual 99	Program Evaluation Type Code	BOY PK	EOY PK	Fam Engage Link		
<LEA Name>	057816	4	3	1	3	0	0	0	2	2	0	0	0	0	0	0	01 TEA SA Tool	20	10	Y		
<LEA Name>	057829	5	4	2	0	0	0	2	2	0	0	0	0	0	0	0	00 None	30	0	N		
<LEA Name>	101871	1	1	2	0	0	0	2	2	0	0	0	0	0	0	0	99 Other	25	25	Y		
<LEA Name>	109901	3	3	2	1	0	0	2	1	0	0	0	0	0	0	0	01 TEA SA Tool	0	0	N		
<LEA Name>	095901	3	3	2	1	0	0	2	1	0	0	0	0	0	0	0	01 TEA SA Tool	0	0	Y		

Page break



REPORT UPDATES



- **SUMMER TRAINING 2024** The following report was updated to include the teacher “Inst Strt” and “Inst End” dates:
 - ECDO-000-006 Early Childhood PK Data Submission

Texas Education Agency ECDO-000-006 vnn.n.n ***CONFIDENTIAL*** LEA: 999999 - <Name of LEA>		TSDS EARLY CHILDHOOD PK DATA SUBMISSION LEA-level Data Public PK Students w/ BOY Assessments Campuses: All Campuses 2021-2022 Prekindergarten										Tuesday 4/18/2023 2:41PM Page n of n			
Campus: 999999999 - <Name of Campus/Program>		ORGANIZATION-CATEGORY: Local Education Agency			CAMPUS GRADES OFFERED: Prekindergarten			ORGANIZATION CATEGORY: School							
STUDENT DATA															
Name	UID	Sex	DOB	Hisp/Latino	Race	Emerg Biling	Econ Dis	SpecialEd	Primary Fd	Secondary Fd					
STUDENT PK DATA					COURSE SECTION INFORMATION					TEACHER DATA					
PK School Type	Assessment Title*	Academic Subject	Admin Dt	Raw Score/Percentile**	Student Instr Type	Class ID	# days in Class	PK Cur. Cd.	PK Program Type	Childcare Operation Number	Home Rm Indicator	PK Tchr Req	Teacher Name	UID	
Jones, Laura	123456789	Female	12/29/1974	TRUE	P	Emergent Bilingual	No	Y	##	##	12345678	1	01	Paddington, Bob	4646464635
Public PK Licensed Child Care					AM	48473609782845 HQ	12	07	##	12345678	1				
	BOY: BASC	ELR	09/15/21	80											
	BOY: BASC	ELW	09/15/21	95											
	BOY: Fox-in-a-Box	LC	09/15/21	62**											
	BOY: BASC	M	09/15/21	83											
	BOY: BASC	CMP	09/15/21	99		728959384920492 HQ									
In-District Charter Partnership					AM		89	07	##	A2222222	2				

Inst Strt: 08/01/2021
Inst End: 09/12/2021



REPORT UPDATES

- **NEW*** The report logic calculating the number of days in class, number of days in PKSchoolType, and number of HighQualityPKProgram days will be updated to use a fixed date when the optional StudentSection.EndDate is not provided unless there is a withdrawal or schedule change.
 - ECD0-000-006 Early Childhood PK Data Submission

Texas Education Agency ECD0-000-006 v25.1.4 *** CONFIDENTIAL *** LEA: 701603 - SEDS LEARNING ISD		TSDS EARLY CHILDHOOD PK DATA SUBMISSION LEA-level Data Public All PK Students (with or w/o Assessments) Campuses: All 2024 - 2025 Prekindergarten ORGANIZATION-CATEGORY: Local Education Agency CAMPUS GRADES OFFERED: Prekindergarten ORGANIZATION CATEGORY: School Status: Completed						Sunday 02/23/2025 12:42 PM Page 1 of 4																			
Campus: 701603002 - LEARNING MIDDLE SCHOOL																											
STUDENT DATA		STUDENT PK DATA						COURSE SECTION INFORMATION				TEACHER DATA															
Name	UID	Sex	DOB	Hisp/Latino	Race	Emerg Biling	Econ Dis	Special Ed	Primary Fd	Secondary Fd	School/Program Type	Assessment Title*	Academic Subject	Admin Dt	Raw Score/Percentile**	Student Instr Type	Class ID	# Days in Class	PK Cur. Cd.	PK Program Type	Childcare Operation Number	Home Rm Indicator	PK Tchr Req	Teacher Name	UID		
FAFINSKI, ZACKARY Nicholas		1121337643	Female	08/30/1993	FALSE	A,B,P	Former		No		1	2	Public Pre-K Licensed Child Care			FULL	62e1eMFTRE4aZ HQ	281	18	04				BOY PK LION for Prekindergarten English	M	09/16/24	06.00

Total Days in a PK Program	281
Student in HQ Program >= 112 days	Yes

*New since Summer Training 2024

BUSINESS RULE UPDATES

- The following business rules will be impacted by the C207 PKTeacherRequirement descriptor table values that will be added:
 - **30040-0049**
 - **30040-0057**

TSDS UPGRADE PROJECT UPDATES



■ Data Element Name Changes:

Data Element ID	XML Data Element Name	Upgrade Data Element Name
E1127	ASSESSMENT TITLE	TitleofAssessment
E1359	SCORE RESULT	Result
E1056	CLASS-ID-NUMBER	SectionIdentifier
E3010 (was E1069)	STUDENT-BEGIN-DATE	BeginDate
E3020 (was E1070)	STUDENT-END-DATE	EndDate
E3010 (was E1065)	ASSIGNMENT-BEGIN-DATE	BeginDate
E3020 (was E1066)	ASSIGNMENT-END-DATE	EndDate
E0790 (was E1390)	EMERGENT-BILINGUAL	EmergentBilingualIndicator
E3044 (was E1079)	PRIMARY-PK-FUNDING-SOURCE	PKFundingSource
E3044 (was E1080)	SECONDARY-PK-FUNDING-SOURCE	PKFundingSource

TSDS UPGRADE PROJECT UPDATES



■ Descriptor Table Name Changes:

Descriptor Table ID	XML Code Table Name	Upgrade Descriptor Table Name
C061 (was DC079)	EMERGENT-BILINGUAL-TYPE	EmergentBilingualIndicator
C303 (was DC096)	PROGRAM-TYPE	ProgramType
C310 (was DC152)	PK-SCHOOL-TYPE	PKSchoolType
C311 (was DC153)	STUDENT-INSTRUCTION-TYPE	PKStudentInstruction
C312 (was DC154)	ASSESSMENT-TITLE-CODE	TitleOfAssessment

TSDS UPGRADE PROJECT UPDATES



Business Rule Changes:

- Uses codes instead of descriptors to trigger validations:
 - “If ReportAssessmentType is "02" (ECDS - PK)...”

Rule Level	Rule #	Rule Text / Business Meaning	Sev./Level	Core	PEIMS	Applies To
2 and 3	46010-0002	<p>If REPORT-ASSESSMENT-TYPE is "ECDS - PK", then ASSESSMENT-REPORTING-METHOD must be "Raw score" or "Percentile".</p> <p>For each StudentAssessment for an Assessment with ReportAssessmentType of "02" (ECDS - PK), the AssessmentReportingMethod must be "20" (Percentile) or "27" (Raw Score).</p> <p>PK Assessments collected for the Early Childhood Data System (ECDS) must have a AssessmentReportingMethod of Percentile ("20") or Raw Score ("27").</p>	F	ECDS-PK		District Charter
2 and 3	46010-0004	<p>If ReportAssessmentType is "02" (ECDS - PK), then EntryGradeLevel on StudentSchoolAssociation data for this student must be "PK" (PreKindergarten).</p> <p>A student reported with an ECDS-PK assessment must be enrolled in EntryGradeLevel PreKindergarten ("PK")</p>	F	ECDS-PK		District Charter
2 and 3	60010-0006	<p>If ReportAssessmentType is "02" (ECDS - PK), then AssessedGradeLevel must be "PK" (PreKindergarten).</p> <p>PK Assessments collected for the Early Childhood Data System (ECDS) must have a AssessedGradeLevel of PreKindergarten ("PK").</p>	F	ECDS-PK		District Charter

TSDS UPGRADE PROJECT UPDATES



- Business Rule Changes:

- Business validation logic requires that a BeginDate and EndDate must be populated:

Rule Level	Rule #	Rule Text / Business Meaning	Sev./Level	Core	PEIMS	Applies To
2 and 3	30305-0025	<p>For a Teacher Section Association StaffSectionAssociation being reported for the ECDS collection, the following must not be blank: ASSIGNMENT-BEGIN-DATE and ASSIGNMENT-END-DATE BeginDate and EndDate.</p> <p>For a Teacher Section Association StaffSectionAssociation reported for the ECDS collection, the following must be reported: Begin Date and End Date.</p>	F	ECDS-KG, ECDS-PK		District Charter
2 and 3	40110-0184	<p>If the student assessment REPORT-ASSESSMENT-TYPE is "ECDS - PK" or "ECDS - KG", for a particular TX-UNIQUE-STUDENT-ID, there must be one and only one student section association where assessment ADMINISTRATION-DATE is greater than or equal to STUDENT-BEGIN-DATE and less than or equal to STUDENT-END-DATE, and HOME-ROOM-INDICATOR is TRUE.</p> <p>For each StudentAssessment for an Assessment with ReportAssessmentType of "01" (ECDS - KG) or "02" (ECDS - PK), there must be one and only one StudentSectionAssociation with a matching StudentUniqueid where the StudentAssessment AdministrationDate is greater than or equal to BeginDate and less than or equal to EndDate, and HomeroomIndicator is TRUE.</p> <p>A Public Prekindergarten or Kindergarten student can only be reported with one home room at the time the assessment is administered.</p>	F	ECDS-KG, ECDS-PK		District Charter

TSDS UPGRADE PROJECT UPDATES



■ Business Rule Changes:

■ 30305-0011

- The rule logic was updated from “EndDate must be greater than BeginDate” to “EndDate must be greater than or equal to BeginDate.”

Rule #	Rule Text / Business Meaning	Sev./ Level	Core	PEIMS	Applies To
30305-0011	EndDate must be greater than or equal to BeginDate. The date that a teacher was assigned to, or reassigned to, a course must occur on or before the last date a teacher was assigned to a course.	F L2, L3	✓		District, Charter

TIMELINE



Early Childhood Data System Collection (ECDS) - PK	Date
TSDS ready to load data to IODS	August 5, 2024
ECDS Prekindergarten ready for users to complete	May 1, 2025
ECDS Prekindergarten Submission due date for LEAs	June 26, 2025
ECDS Prekindergarten data available to customers	July 10, 2025



Early Childhood Education

[Early Childhood Education Division Support Portal](#)



Technical Support

TSDSCustomerSupport@tea.texas.gov



Technical Specifications

[2024-2025 TSDS Web-Enabled Data Standards \(TWEDS\)](#)

[Known Issues](#)



TSDS Incident Management System (TIMS)

[TSDS Incident Management System \(TIMS\) Support Application](#)

[TIMS Knowledge Base Article Repository](#)

SELA Resource Slides #45 to #56



[Return to slide 10](#)

PROGRAM AREA UPDATES & GUIDANCE



- Special Education Programs Division
 - **Emily Heise** – Director, Deaf & Hard of Hearing Program Admin. and State Director of Regional Day School Program for the Deaf
 - Program-related questions can be submitted to SELA@tea.texas.gov.

DATA GOVERNANCE UPDATES



■ Descriptor Table Updates:

Table Identification	Name	Date Issued	Date Updated
C314	LangAcqServicesProvided	03/01/2020	07/01/2024
Descriptor	Short Description	Long Description	
00	Services not Provided	Services not Provided	
01	Direct	Direct	
02	Indirect/Consultative	Indirect/Consultative	

DATA GOVERNANCE UPDATES



■ Descriptor Table Updates:

Table Identification	Name	Date Issued	Date Updated
C320	ToolOrAssessmentUsed	03/01/2020	12/01/2022
Descriptor	Short Description	Long Description	
00	Not Assessed	Not Assessed	
OW	OWLS II (Diagnostic)	Oral And Written Language Scales (OWLS), Second Edition (Proficiency)	
CA	CASLLS (Proficiency)	Cottage Acquisition Scales For Listening, Language, And Speech (CASLLS) (Proficiency)	
CM	Communication Matrix (Proficiency)	Communication Matrix (Proficiency)	
AS	ASLA (Diagnostic)	American Sign Language Assessment (Diagnostic)	
VC	VCSL (Proficiency)	Visual Communication And Sign Language (Proficiency)	
RS	ASL-RST (Diagnostic)	American Sign Language Receptive Skills Test (Diagnostic)	
ES	ASL-EST (Diagnostic)	American Sign Language Receptive Skills Test (Diagnostic)	

TSDS UPGRADE PROJECT UPDATES



■ Data Element Name Changes:

Data Element ID	XML Data Element Name	Upgrade Data Element Name
E3010	N/A	BeginDate
E3020	N/A	EndDate
E3016	N/A	DisabilitySetBeginDate
E3017	N/A	DisabilitySetEndDate
E3025	N/A	InstructionalSettingBeginDate
E3026	N/A	InstructionalSettingEndDate
E0266	CAMPUS-ID	EducationOrganization (Reference)

TSDS UPGRADE PROJECT UPDATES



■ Descriptor Table Name Changes:

Descriptor Table ID	XML Code Table Name	Upgrade Descriptor Table Name
C061 (was DC079)	EMERGENT-BILINGUAL-TYPE	EmergentBilingualIndicator
C318 (was DC160)	PERIOD-OF-TIME-ACCESS-CODE	HearingAmplificationAccess
C319 (was DC161)	AVERAGE-TIME-CODE	HearingAmplificationDailyUse
C303 (was DC096)	PROGRAM-TYPE	ProgramType
C053 (was DC142)	DISABILITY-TYPE	Disability

TSDS UPGRADE PROJECT UPDATES



■ Business Rule Changes:

- Uses Disability '05' and '03' descriptor values replacing 'Deaf Blindness' and 'Deaf And Hard of Hearing'

Rule Level	Rule #	Rule Text / Business Meaning	Sev./Level	Core	PEIMS	Applies To
2 and 3	40100-0204	<p>If age is less than 9 on September 1, and DISABILITY is "Deaf-Blindness (Deaf-Blind)" or "Deaf And Hard Of Hearing", then there must be a Special Education program association reported with a matching TX-UNIQUE-STUDENT-ID, including INSTRUCTIONAL-SETTING-CODE, LANG-ACQ-SERVICES-PROVIDED, and PREFERRED-HOME-COMMUNICATION-METHOD.</p> <p>On the submission date for the Special Education Language Acquisition (SELA) collection, if Disability is Deaf-Blindness ("05") or Deaf And Hard Of Hearing ("03"), and the students age is less than 9 on September 1, then InstructionalSetting, LangAcqServicesProvided, and PreferredHomeCommunicationMethod must not be blank.</p> <p>Students less than nine years of age with the disabilities of Deaf-Blindness ("05") or Deaf And Hard Of Hearing ("03") must be reported with Special Education program association Language Acquisition information, including InstructionalSetting, LangAcqServicesProvided, and PreferredHomeCommunicationMethod.</p>	F	SELA		District Charter
2 and 3	40100-0205	<p>If age is less than 9 on September 1, and DISABILITY is "Deaf-Blindness (Deaf-Blind)" or "Deaf And Hard Of Hearing", then ELIGIBILITY-DATE (TX-EligibilityDateDisabilities) must not be blank.</p> <p>On the submission date for the Special Education Language Acquisition (SELA) collection, if Disability is Deaf-Blindness ("05") or Deaf And Hard Of Hearing ("03"), and the students age is less than 9 on September 1, then EligibilityDateDisabilities must not be blank.</p> <p>Students less than nine years of age with the disabilities of Deaf-Blindness ("05") or Deaf And Hard Of Hearing ("03") must be reported with EligibilityDateDisabilities.</p>	F	SELA		District Charter

TSDS UPGRADE PROJECT UPDATES



Business Rule Changes:

- Example of rules that use '00' descriptor values instead of code value description:

Rule Level	Rule #	Rule Text / Business Meaning	Sev./Level	Core	PEIMS	Applies To
2 and 3	41163-0057	If HearingAmplificationType is a value other than blank or "00" (Not Applicable), then HearingAmplificationAccess must not be blank.	F	SELA		District Charter
		HearingAmplificationAccess must be reported if HearingAmplificationType is reported as a value other than blank or Not Applicable ("00").				
2 and 3	41163-0062	If LangAcqServicesProvided is "00" (Services not Provided), then FrequencyOfServices and HoursSpentReceivingServices must not be reported.	F	SELA		District Charter
		FrequencyOfServices and HoursSpentReceivingServices must not be reported when LangAcqServicesProvided is reported as Services not Provided ("00").				
2 and 3	41163-0066	If HearingAmplificationType is "00" (Not Applicable), then this student must not be reported with any other HearingAmplificationType value.	F	SELA		District Charter
		When a student is reported with Not Applicable ("00") for HearingAmplificationType, indicating that the student does not use a hearing amplification device, then no other HearingAmplificationType may be reported for the student.				

TSDS UPGRADE PROJECT UPDATES



■ Business Rule Changes:

- The following business rules have been **added**:

Rule Level	Rule #	Rule Text / Business Meaning	Sev./Level	Core	PEIMS	Applies To
2 and 3	41163-0055	If FrequencyOfServices is not blank, then LangAcqServicesProvided and HoursSpentReceivingServices must not be blank.	F	SELA		District Charter
		LangAcqServicesProvided and HoursSpentReceivingServices must be reported if FrequencyOfServices is reported.				
2 and 3	41163-0056	If HoursSpentReceivingServices is not blank, then LangAcqServicesProvided and FrequencyOfServices must not be blank.	F	SELA		District Charter
		LangAcqServicesProvided and FrequencyOfServices must be reported if HoursSpentReceivingServices is reported.				

TSDS UPGRADE PROJECT UPDATES



■ SUMMER TRAINING 2024 Entity/Common Type Change:

<i>StudentSpecialEducationProgramAssociation</i>						
	EducationOrganization		Reference		9	
	Student					
	Program					
	BeginDate		E3010	Date		
	EndDate		E3020	Date		
	PreferredHomeCommunicationMethod	TX	E1661	PreferredHomeCommunicationMethod C313		
<i>.InstructionalSettingSet (TX)</i>						
<i>(may have multiple instances)</i>	InstructionalSetting	TX	E0173	InstructionalSetting C035		
	InstructionalSettingBeginDate	TX	E3025	Date		
	InstructionalSettingEndDate	TX	E3026	Date		

TIMELINE



Special Education Language Acquisition (SELA)	Date
TSDS ready to load data to IODS	August 5, 2024
Special Education Language Acquisition ready for users to complete	May 19, 2025
Special Education Language Acquisition Submission due date for LEAs	June 26, 2025
Special Education Language Acquisition data available to customers	July 10, 2025



Technical Support

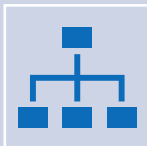
TSDSCustomerSupport@tea.texas.gov



Technical Specification

[2024-2025 TSDS Web-Enabled Data Standards \(TWEDS\)](#)

[Known Issues](#)



TSDS Incident Management System (TIMS)

[TSDS Incident Management System \(TIMS\) Support Application](#)

[TIMS Knowledge Base Article Repository](#)

RF Tracker Resource Slides #57 to #76



[Return to slide 13](#)

PROGRAM AREA UPDATES & GUIDANCE



- Office of Special Populations and Monitoring
 - Department of Review and Support
 - ReviewandSupport@tea.texas.gov

TSDS UPGRADE PROJECT UPDATES



- Data Element Name Changes:

Data Element ID	XML Data Element Name	Upgrade Data Element Name
E0041	PRIMARY-DISABILITY-CODE	Disability
E0834	SECONDARY-DISABILITY-CODE	Disability
E0835	TERTIARY-DISABILITY-CODE	Disability

TSDS UPGRADE PROJECT UPDATES



■ Data Element Name Changes:

Data Element ID	XML Data Element Name	Upgrade Data Element Name
E0833	REG-DAY-SCH-PROG-DEAF-CODE	SpecialEducationProgramService
E0838	AUDIOLOGICAL-SERV-IND-CODE	SpecialEducationProgramService
E0840	COUNSELING-SERVICES-IND-CODE	SpecialEducationProgramService
E0841	MEDICAL-DIAGNOSTIC-SERV-IND-CODE	SpecialEducationProgramService
E0843	OCCUPATIONAL-THERAPY-IND-CODE	SpecialEducationProgramService

TSDS UPGRADE PROJECT UPDATES



■ Data Element Name Changes:

Data Element ID	XML Data Element Name	Upgrade Data Element Name
E0844	ORIENT-MOBILITY-TRNG-IND-CODE	SpecialEducationProgramService
E0845	PHYSICAL-THERAPY-IND-CODE	SpecialEducationProgramService
E0846	PSYCHOLOGICAL-SERVICES-IND-CODE	SpecialEducationProgramService
E0847	RECREATION-IND-CODE	SpecialEducationProgramService

TSDS UPGRADE PROJECT UPDATES



■ Data Element Name Changes:

Data Element ID	XML Data Element Name	Upgrade Data Element Name
E0848	SCHOOL-HEALTH-SERVICES-IND-CODE	SpecialEducationProgramService
E0849	SOCIAL-WORK-SERVICES-IND-CODE	SpecialEducationProgramService
E0851	TRANSPORTATION-INDICATOR-CODE	SpecialEducationProgramService
E0857	SPEECH-THERAPY-INDICATOR-CODE	SpecialEducationProgramService

TSDS UPGRADE PROJECT UPDATES



■ Data Element Name Changes:

Data Element ID	XML Data Element Name	Upgrade Data Element Name
E0899	PRESCHL-PROG-CHLDRN-WITH-DISAB-IND-CD	SpecialEducationProgramService
E0900	EARLY-CHILDHOOD-INTERV-IND-CODE	SpecialEducationProgramService
E0997	ASSISTIVE-TECH-INDICATOR-CODE	SpecialEducationProgramService
E1040	INTERPRETING-SERVICES-TYPE-CODE	SpecialEducationProgramService

TSDS UPGRADE PROJECT UPDATES



■ Business Rule Changes:

- If Disability is "14", then OrderOfDisability must be 1.
 - For 2023-2024 the disability data elements were primary, secondary, and tertiary.
 - For 2024-2025, the OrderOfDisability is used, 1=primary, 2=secondary, and 3=tertiary.

Rule Level	Rule #	Rule Text / Business Meaning	Sev. /Level	Core	PEIMS	Applies To
2 and 3	41163-0002	If Disability is "14", then OrderOfDisability must be 1. Only a primary disability may be Noncategorical Early Childhood ("14") for a special education student.	F	RFT	1	District Campus Charter

TSDS UPGRADE PROJECT UPDATES



■ Business Rule Changes:

- On the PEIMS Fall snapshot date, or on the submission date for the Residential Facility Tracker (RFT) collection, if a Disability is reported with OrderOfDisability 3, then a Disability must be reported with OrderOfDisability of 2 for this student.
 - For 2023-2024 the disability data elements were primary, secondary, and tertiary.
 - For 2024-2025, the OrderOfDisability is used, 1=primary, 2=secondary, and 3=tertiary.

Rule Level	Rule #	Rule Text / Business Meaning	Sev. /Level	Core	PEIMS	Applies To
2 and 3	41163-0005	<p>On the PEIMS Fall snapshot date, or on the submission date for the Residential Facility Tracker (RFT) collection, if a Disability is reported with OrderOfDisability 3, then a Disability must be reported with OrderOfDisability of 2 for this student.</p> <p>If a student is reported with a tertiary disability, then a secondary disability must also be reported.</p>	F	RFT	1	District Campus Charter

TSDS UPGRADE PROJECT UPDATES



■ Business Rule Changes:

- On the submission date for the Residential Facility Tracker (RFT) submission, if a Disability is reported with OrderOfDisability of 2 or 3, then a Disability must be reported with OrderOfDisability of 1.
 - For 2023-2024 the disability data elements were primary, secondary, and tertiary.
 - For 2024-2025, the OrderOfDisability is used, 1=primary, 2=secondary, and 3=tertiary.

Rule Level	Rule #	Rule Text / Business Meaning	Sev. /Level	Core	PEIMS	Applies To
2 and 3	41163-0071	On the submission date for the Residential Facility Tracker (RFT) submission, if a Disability is reported with OrderOfDisability of 2 or 3, then a Disability must be reported with OrderOfDisability of 1. If a student is reported with a secondary disability or tertiary disability, then their primary disability must be reported.	F	RFT		District Charter

TSDS UPGRADE PROJECT UPDATES



- **SUMMER TRAINING 2024** Business Rule Changes:
 - Reinstated Data Validation Rule 10025-0001:

Rule Level	Rule #	Rule Text / Business Meaning	Sev. /Level	Core	PEIMS	Applies To
L3	10025-0001	ResidentialFacilityId must match an entry registered with the TEA as an active residential facility.	F	✓		Charter, LEA
		ResidentialFacilityId must match an entry registered with the TEA as an active residential facility.				

TSDS UPGRADE PROJECT UPDATES



- **SUMMER TRAINING 2024** Business Rule Changes:
 - Added Data Validation Rule 40115-0013:

Rule Level	Rule #	Rule Text / Business Meaning	Sev. /Level	Core	PEIMS	Applies To
L3	40115-0013	ResidentialFacilityId must match an entry registered with the TEA as an active residential facility.	F	✓		Charter, LEA
		ResidentialFacilityId must match an entry registered with the TEA as an active residential facility.				

TSDS UPGRADE PROJECT UPDATES



- **SUMMER TRAINING 2024** Business Rule Changes:
 - Revised Data Validation Rule 41163-0010:

Rule Level	Rule #	Rule Text / Business Meaning	Sev. /Level	Core	PEIMS	Applies To
L2, L3	41163-0010	<p>On the PEIMS Fall snapshot date, or on the submission date for the Residential Facility Tracker (RFT) collection, if a Special Education Program Service SPEDProgramSvc of Receiving Instructional Services from RDSPD ("22") is reported, then at least one Disability must be reported as Deaf And Hard Of Hearing ("03") or Deaf-Blindness ("05") for this student.</p> <p>If a special education student is receiving instructional services from the Regional Day School Program for the Deaf (RDSPD), then at least one of the Disability must be reported for Deaf And Hard Of Hearing ("03") or Deaf-Blindness ("05").</p>	F	✓		Campus, Charter, LEA

TSDS UPGRADE PROJECT UPDATES



- **SUMMER TRAINING 2024** Business Rule Changes:
 - Added Data Validation Rule 41163-0103:




Rule Level	Rule #	Rule Text / Business Meaning	Sev. /Level	Core	PEIMS	Applies To
L2, L3	41163-0103	On the submission date for the Residential Facility Tracker (RFT) submission, a Disability must be reported with OrderOfDisability of 1 where DisabilitySetBeginDate is on or before DateEnteredRF, and DisabilitySetEndDate is not reported or is after DateEnteredRF. A student reported for the Residential Facility Tracker (RFT) submission must be reported with a primary disability that is effective on the date they entered the residential facility.	F	✓		Charter, LEA

TSDS UPGRADE PROJECT UPDATES



- SUMMER TRAINING 2024 Entity/Common Type Change:**
 - Removed SpecialEducationProgramService common type

StudentSpecialEducationProgramAssociation Entity




Data Element	NP*	Core	PEIMS	Length	Data Type	Descriptor Table	Element ID
School 							
Student 							
Program 							
BeginDate		✓	PF,PS,PE	10	Date		E3010
EndDate		✓	PF,PS,PE	10	Date		E3020
PreferredHomeCommunicationMethod		✓			Descriptor	C313	E1661
SpecialEducationProgramService (may have multiple instances)							
SpecialEducationProgramService		✓	PF,PS		Descriptor	C341	E3058
ServiceBeginDate		✓	PF,PS	10	Date		E3055
ServiceEndDate		✓	PF,PS	10	Date		E3056

TSDS UPGRADE PROJECT UPDATES



- **SUMMER TRAINING 2024** Entity/Common Type Change:
 - StudentSpecialEducationProgramAssociation.SPEDProgramSvcSet

StudentSpecialEducationProgramAssociation Entity

Data Element	NP*	Core	PEIMS	Length	Data Type	Descriptor Table	Element ID
School 							
Student 							
Program 							
BeginDate		✓	PF,PS,PE	10	Date		E3010
EndDate		✓	PF,PS,PE	10	Date		E3020
PreferredHomeCommunicationMethod		✓			Descriptor	C313	E1661
SPEDProgramSvcSet (may have multiple instances)							
SPEDProgramSvc		✓	PF,PS		Descriptor	C341	E3058
ServiceBeginDate		✓	PF,PS	10	Date		E3055
ServiceEndDate		✓	PF,PS	10	Date		E3056

TSDS UPGRADE PROJECT UPDATES



■ Additional Changes:

XML Legacy Data Element	XML Legacy Complex Type	Upgrade Data Element	Upgrade Student Entity
CAMPUS-ID-OF-ENROLLMENT (E0782)	StudentResidentialFacilityAssociationExtension Complex Type	School	StudentSchoolAssociation
ENTRY-GRADE-LEVEL-TYPE (E1517)	StudentResidentialFacilityAssociationExtension Complex Type	EntryGradeLevel	StudentSchoolAssociation

TIMELINE



RF Tracker	Date
TSDS Ready to load data to the IODS	August 5, 2024
All RF Tracker data up to this point must be promoted, validated, and fatal free. LEA will continue to report RF Tracker data as students enter and exit residential facilities or on a monthly basis throughout the school year.	December 13, 2024
RF Tracker ready for users to complete	May 19, 2025
RF Tracker Submission due date for LEAs	July 17, 2025
RF Tracker data available to customers	July 31, 2025

Knowledge Based Articles:

- [TSDSKB-586](#) RFT: Residential Facility Tracker (RF Tracker – FAQ)
- [TSDSKB-589](#) RFT: Residential Facility Tracker (RF Tracker) process for adding or updating the Residential Facilities IDs

Program Area Support

- ReviewandSupport@tea.texas.gov

Residential Facility Download

- [AskTED](#)



Technical Support

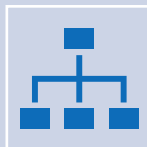
TSDSCustomerSupport@tea.Texas.gov



Technical Specifications

[2024-2025 TSDS Web-Enabled Data Standards \(TWEDS\)](#)

[Known Issues](#)



TSDS Incident Management System (TIMS)

[TSDS Incident Management System \(TIMS\) Support Application](#)

[TIMS Knowledge Base Article Repository](#)

Child Find Resource Slides #77 to #90



[Return to slide 18](#)

PROGRAM AREA UPDATES & GUIDANCE




- Special Populations Strategic Supports and Reporting Division
 - **Donna Holmes** – Program Specialist
 - Program-related questions can be submitted through TIMS and will be routed accordingly.

- Monitoring, Review and Support
 - **Lori Merrell**, MS CCC/SLP – Director
 - For questions about the SPP clarifications process, please contact ReviewandSupport@tea.texas.gov

DATA GOVERNANCE UPDATES

- **SUMMER TRAINING 2024** Entity/Common Type Change:
 - ReportingPeriodExt
 - Reference CalendarDate
 - Removed *may have multiple instances*

ReportingPeriodExt Entity

Data Element	NP*	Core	PEIMS	Length	Data Type	Descriptor Table	Element ID
CalendarDate <i>(may have multiple instances)</i> 							
ReportingPeriod		✓	PS,PE		Descriptor	C130	E0934
BeginDate		✓	PS,PE	10	Date		E3010
EndDate		✓	PS,PE	10	Date		E3020
NumberDaysTaught		✓	PS,PE	3	Number		E0935

DATA GOVERNANCE UPDATES

- **SUMMER TRAINING 2024** Data Element Change:
 - E3051 Responsibility
 - Revised the definition.

Data Element ID	Data Element Name	Date Issued	Date Updated
E3051	Responsibility	11/01/2021	07/01/2022 07/01/2024

Definition

Responsibility descriptor indicates the education organization’s responsibility for a student, such as accountability or residence.

Special Instructions

Table Identification	Length	Data Type	Domain of Values
Responsibility (C339)		Descriptor	

Used in Entity

StudentEducationOrganizationResponsibilityAssociation

Used in Domain

Enrollment

DATA GOVERNANCE UPDATES



■ SUMMER TRAINING 2024 Descriptor Table Updates:

Table Identification	Name	Date Issued	Date Updated
C215	CalendarType	12/01/2017	07/01/2024
Descriptor	Short Description	Long Description	
01	Standard Program 75,600 operation mins	Standard Program For School District Campus Following 75,600 Operational Minutes (Includes Full-time virtual campus with its own CDCN) (Does Not Include Prekindergarten Programs/Grades)	
02	Charter after 1/1/2015 or before 1/1/2015 following 75,600 minutes.	Charter School Campus Issued To Operate After 1/1/2015 Following 75,600 Operational Minutes, Or Operating Before 1/1/2015 And Electing To Follow 75,600 Operational Minutes (Does Not Include Prekindergarten Programs/Grades)	
03	Charter operate before 1/1/2015 and elect 180 day school year calendar.	Charter School Campus Operating Before 1/1/2015 And Electing To Follow A 180 Day School Year Calendar (Includes Prekindergarten Programs/Grades)	
04	PK Program 1/2 day for 3-year-old, 1/2 Ineligible 3-4-year-old. No waiver.	Prekindergarten Other Programs (Including School Districts And Charter Schools Approved To Operate After January 1, 2015) – Half-Day Programs For Three-Year-Old Students And Half-Day Ineligible Three And Four-Year-Old Students (No Waiver Required)	
05	Dropout Recovery Program/Campus TEC 12.1141(c) or TEC 39.0548	Dropout Recovery Program/Campus TEC 12.1141(c) or TEC 39.0548	
06	Disciplinary Alternative Education Program/Campus TEC 37.008	Disciplinary Alternative Education Program/Campus TEC 37.008	
07	Correctional Facility Program/Campus (Adult or Juvenile)	Correctional Facility Program/Campus (Adult or Juvenile)	
08	Residential Treatment Facility Program/Campus	Residential Treatment Facility Program/Campus	
09	Day Treatment Facility Program/Campus	Day Treatment Facility Program/Campus	
10	Psychiatric Hospital Program/Campus	Psychiatric Hospital Program/Campus	
11	Medical Hospital Program/Campus	Medical Hospital Program/Campus	
12	Charter School issued under TEC 29.259 (Excel Academy 227-827 Only)	Charter School issued under TEC 29.259 (Excel Academy 227-827 Only)	
13	Juvenile Justice Alternative Education Program (JJAEP) TEC 37.011(f)	Juvenile Justice Alternative Education Program (JJAEP) TEC 37.011(f)	
14	Full PK 75,600 (eligible and ineligible 3-4-year-old students)	Full-day Prekindergarten Program following 75,600 Operational Minutes (eligible and ineligible three and four-year-old students)	
15	1/2 day PK w/waiver 32,400 (District and charter approved after 1-1-2015)	Half-day Prekindergarten Program with Waiver following 32,400 Instructional Minutes (including school districts and charter schools approved to operate after January 1, 2015)	
16	Additional Days School Year Program	Additional Days School Year Program	
17	Extended School Year	Extended School Year	



DATA GOVERNANCE UPDATES

- **SUMMER TRAINING 2024** Business Rule Changes:
 - The following business rules have been added:

Rule #	Rule Text / Business Meaning	Sev./ Level	Core	PEIMS	Applies To
40110-0001	For a student enrollment (StudentSchoolAssociation), there must be a corresponding Student with the same StudentUniqueld.	F	✓	PF, PS,	Campus, Charter, LEA
	For each student reported with enrollment data, there must be corresponding student data reported.				

40110-0001 Core Submissions:

- CF - CF
- CR - CRW
- CSW - CSW

TSDS UPGRADE PROJECT UPDATES



■ Data Element Name Changes:

Data Element ID	XML Data Element Name	Upgrade Data Element Name
E0975	INSTRUCTIONAL-TRACK-INDICATOR-CODE	CalendarCode
E1168	CALENDAR-DATE	Date
E1582	SCHOOL-DAY-EVENT-CODE	CalendarEvent
E1600	INSTRUCTIONAL-PROGRAM-TYPE	CalendarType
E3051 (was E1710)	CAMPUS-ID-OF-EVALUATION	Responsibility (where descriptor = '03' Evaluation)

TSDS UPGRADE PROJECT UPDATES



■ Data Element Name Changes:

Data Element ID	XML Data Element Name	Upgrade Data Element Name
E1711	STUDENT-ABSENCES-WITHIN-TIMEFRAME	EvaluationDelayDays
E1712	ECI-NOTIFICATION-DATE	TransitionNotificationDate
E1713	ECI-TRANSITION-CONFERENCE-DATE	TransitionConferenceDate
E1715	INITIAL-EVALUATION-DATE	EligibilityEvaluationDate
E1716	SPEL-ELIGIBILITY-DETERMINATION-DATE	EligibilityDeterminationDate
E1717	SPEL-ELIGIBILITY-DETERMINATION-CODE	IDEAIndicator

TSDS UPGRADE PROJECT UPDATES



■ Descriptor Table Name Changes:

Descriptor Table ID	XML Code Table Name	Upgrade Descriptor Table Name
C208	SCHOOL-DAY-EVENT-CODE	CalendarEvent
C215	INSTRUCTIONAL-PROGRAM-TYPE	CalendarType
C339	N/A	Responsibility
C347 (was DC164)	DELAY-REASON-CODE	EligibilityDelayReason
C348 (was DC164)	DELAY-REASON-CODE	EvaluationDelayReason

TSDS UPGRADE PROJECT UPDATES



Business Rule Changes:

- The following business rule has been **added** to ensure all students reported for Child Find are also reported with an evaluation campus.
 - The evaluation campus is the EducationOrganization (reference) reported in the StudentEducationOrganizationResponsibilityAssociation where Responsibility (E3051) = '03' (Evaluation).

Rule Level	Rule #	Rule Text / Business Meaning	Sev. /Level	Core	PEIMS	Applies To
2 and 3	41163-0093	<p>For each student with StudentSpecialEducationProgramEligibilityAssociation data, there must be a StudentEducationOrganizationResponsibilityAssociation with a Responsibility of Evaluation ("03") reported with a matching StudentUniqueid.</p> <p>There must be an Evaluation Campus reported for each student reported with StudentSpecialEducationProgramEligibilityAssociation data for the Child Find collection.</p>	F	Child Find		District Charter

TSDS UPGRADE PROJECT UPDATES



■ Business Rule Changes:

- The following rule has been **updated** to reflect the terminology changes made to the collection of evaluation campus information.
 - **41163-0078** states that the SchoolId reported with a Responsibility = '03' (Evaluation) must match an entry registered with TEA.
 - In the XML submission, this rule stated that the CAMPUS-ID-OF-EVALUATION must be a valid campus.

Rule Level	Rule #	Rule Text / Business Meaning	Sev. /Level	Core	PEIMS	Applies To
2 and 3	41163-0078	The SchoolId for a StudentEducationOrganizationResponsibilityAssociation with a Responsibility of Evaluation ("03") must match an entry registered with the TEA. For students reported for the Child Find collection, Evaluation Campus must be registered with TEA as a valid campus.	F	Child Find		District Charter

TIMELINE



Child Find	Date
TSDS ready to load data to IODS	August 5, 2024
Child Find ready for users to complete	May 19, 2025
Child Find Submission due date for LEAs	July 31, 2025
Child Find data available to customers	August 14, 2025

TIMS Knowledge Base Articles

- [TSDSKB-620](#): SPPI-11 Compliance Flowchart
- [TSDSKB-621](#): SPPI-12 Compliance Flowchart
- [TSDSKB-622](#): Child Find Frequently Asked Questions
- [TSDSKB-645](#): SPPI-12 Frequently Asked Questions
- [TSDKSB-646](#): SPPI-11 Frequently Asked Questions
- [TSDSKB-650](#): Child Find Interactive Flowchart

Please Note – these KB articles are updated to account for the SPPI-11 Eligibility Determination compliance calculation change.



Technical Support

TSDSCustomerSupport@tea.texas.gov



Technical Specification

[2024-2025 TSDS Web-Enabled Data Standards \(TWEDS\)](#)

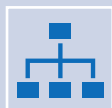
[Known Issues](#)



Program Area Documentation

[SPPI-11 Guidance Documents](#)

[SPPI-12 Guidance Documents](#)



TSDS Incident Management System (TIMS)

[TSDS Incident Management System \(TIMS\) Support Application](#)

[TIMS Knowledge Base Article Repository](#)