



Engineering solutions for tomorrow®

4995 Lacross Rd. | Suite 1325
Charleston, SC 29406

SOUTH CAROLINA
CERTIFICATE OF
AUTHORIZATION #1906

www.reiengineers.com

- GENERAL NOTES:**
- THESE DOCUMENTS ARE THE PROPERTY OF REI ENGINEERS, INC. (REI) AND REI RETAINS ALL RIGHTS THEREIN, INCLUDING COPYRIGHTS. IT MAY ONLY BE USED IN A MANNER CONSISTENT WITH REI'S RIGHTS WHILE REI IS PROVIDING SERVICE FOR THE SPECIFIC PROJECT IDENTIFIED OR REFERRED TO HEREIN OR EXTENSIONS THERETO. IT MAY NOT BE USED FOR ANY OTHER PURPOSE EXCEPT WITH THE EXPRESS WRITTEN AGREEMENT OF, AND COMPENSATION TO, REI ENGINEERS, INC.
 - DIMENSIONS, DETAIL COMPONENTS AND EQUIPMENT PENETRATION LOCATIONS ARE FOR INFORMATION ONLY. CONTRACTOR IS RESPONSIBLE TO FIELD VERIFY ALL INFORMATION PROVIDED.
 - ONLY ONE DETAIL INDICATOR MAY BE SHOWN FOR EACH TYPE OF ROOF PENETRATION. ALL OTHER SIMILAR PENETRATIONS ARE TO BE FLASHED AS REQUIRED BY THE TYPICAL DETAIL INDICATOR, UNLESS OTHERWISE NOTED.
 - NOTES ARE INTENDED TO PROVIDE TYPICAL LOCATIONS OF WORK. IT IS THE CONTRACTOR'S RESPONSIBILITY TO QUANTIFY ALL LOCATIONS.
 - POWER WASH ALL EXTERIOR WALLS AFTER WORK HAS BEEN COMPLETED.
 - (ALTERNATE ONE) PROPERLY PREPARE EXTERIOR WALLS AND PROVIDE FLUID APPLIED WATER REPELLENT.

SHEET NOTES: REFER TO SHEET XW102.

SEALS:



PROJECT NAME:

DORCHESTER
SCHOOL DISTRICT 2

WINDSOR HILL ES PARTIAL
ROOF REPLACEMENT AND
EXTERIOR WALL
RENOVATION

8600 WILLIAM MOULTRIE DRIVE
NORTH CHARLESTON, SC 29420

PROJECT NO:

24CHS-059

ISSUE:

NO.	DATE	DESCRIPTION
1	03/28/25	PRELIMINARY DOCUMENTS
2	04/11/25	CONTRACT DOCUMENTS

THIS LINE IS 1 INCH ON
THE ORIGINAL DRAWING

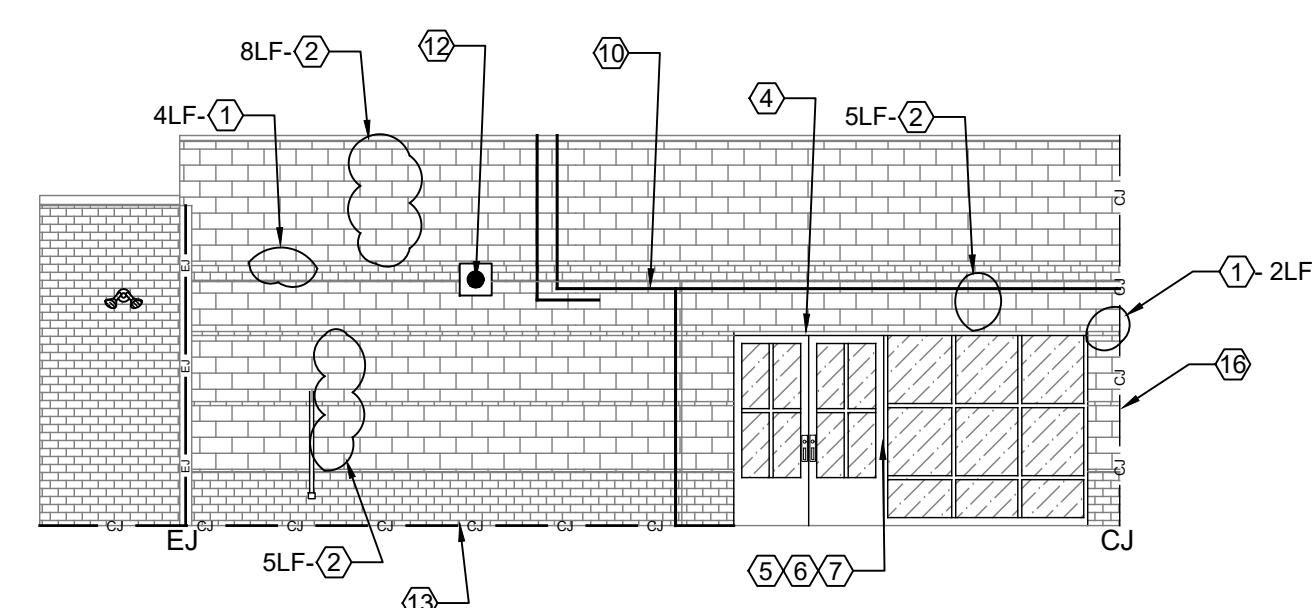
IF IT IS NOT 1 INCH ON THIS PAGE,
SCALE DRAWING ACCORDINGLY.

SHEET TITLE

ELEVATIONS

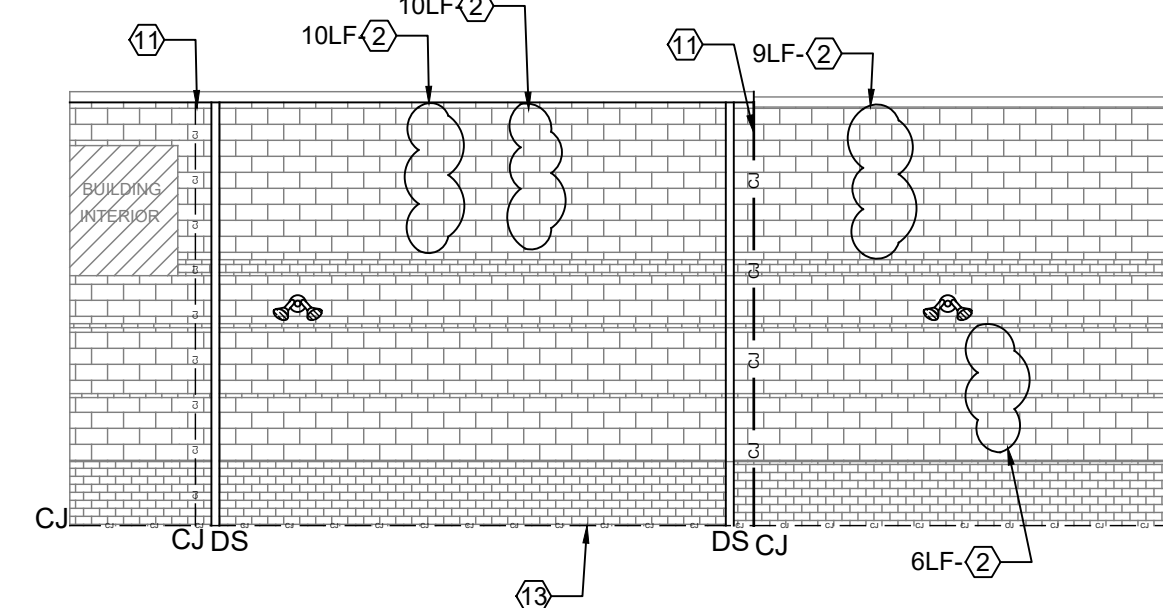
DRAWING

XW205



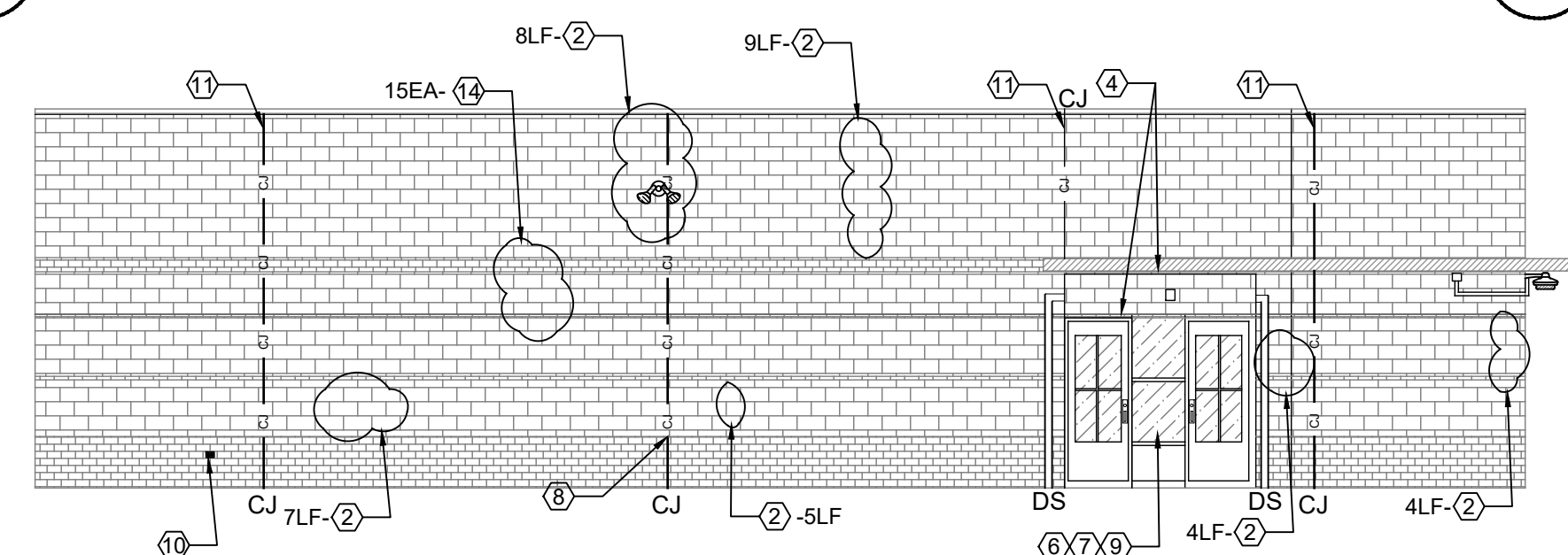
15 ELEVATION

SCALE: 1/8" = 1'-0"



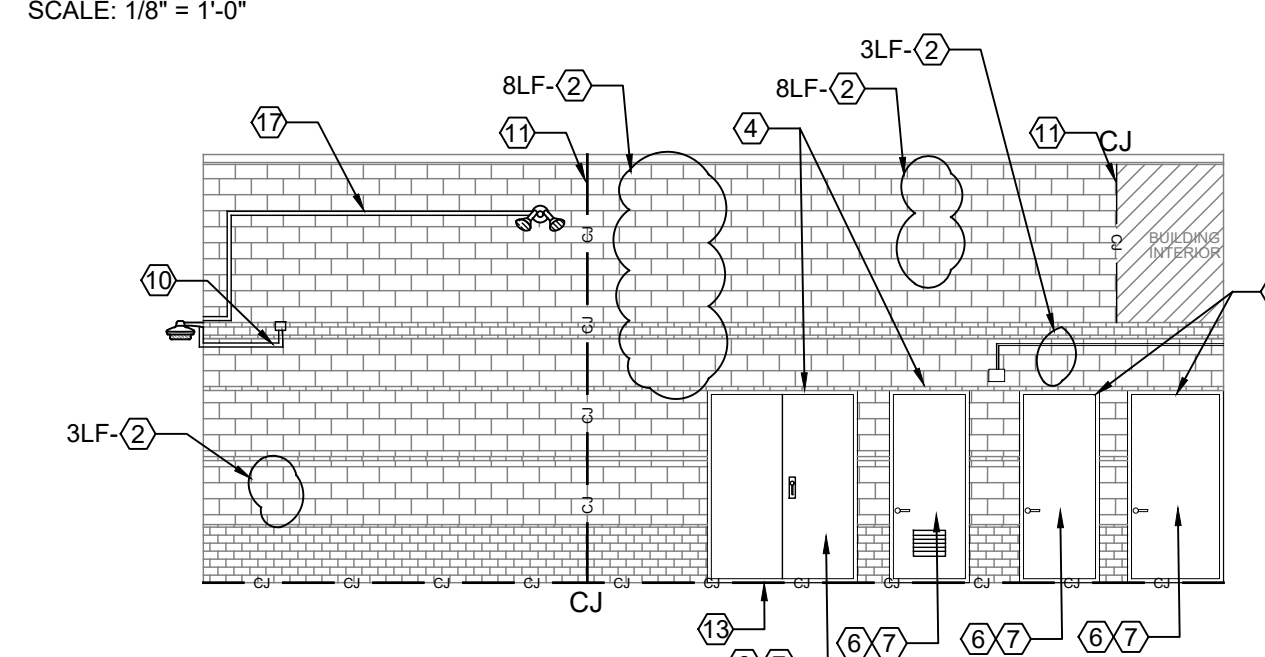
16 ELEVATION

SCALE: 1/8" = 1'-0"



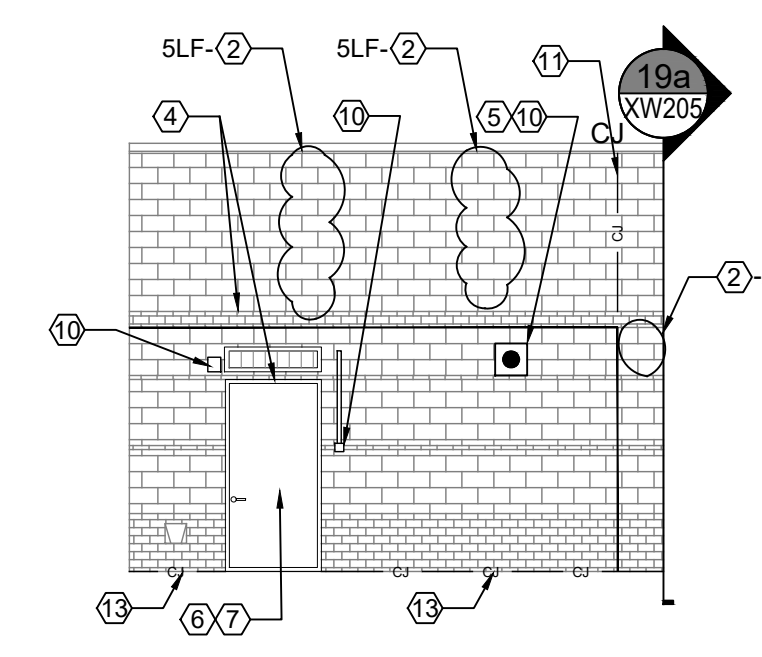
17 ELEVATION

SCALE: 1/8" = 1'-0"



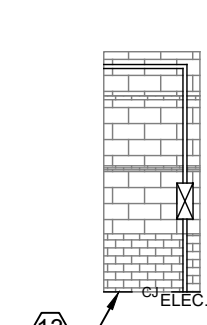
18 ELEVATION

SCALE: 1/8" = 1'-0"



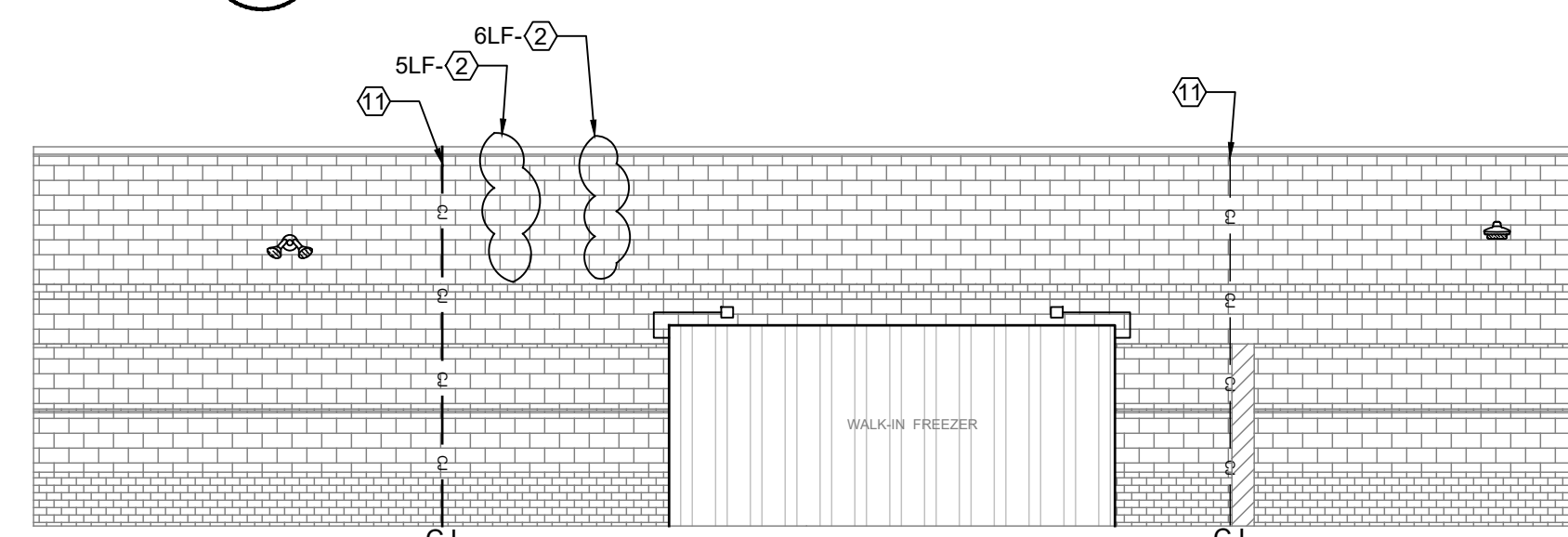
19 ELEVATION

SCALE: 1/8" = 1'-0"



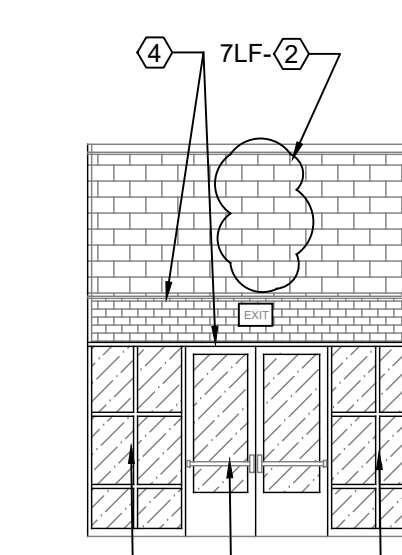
19 ELEVATION, 19a

SCALE: 1/8" = 1'-0"



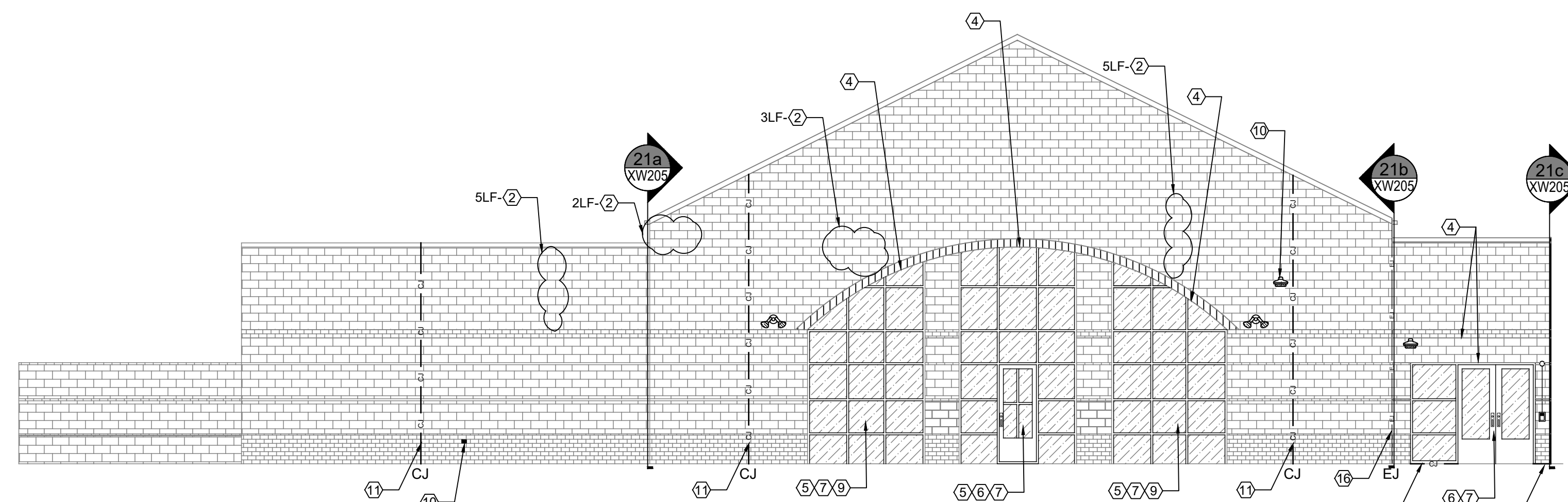
20 ELEVATION

SCALE: 1/8" = 1'-0"



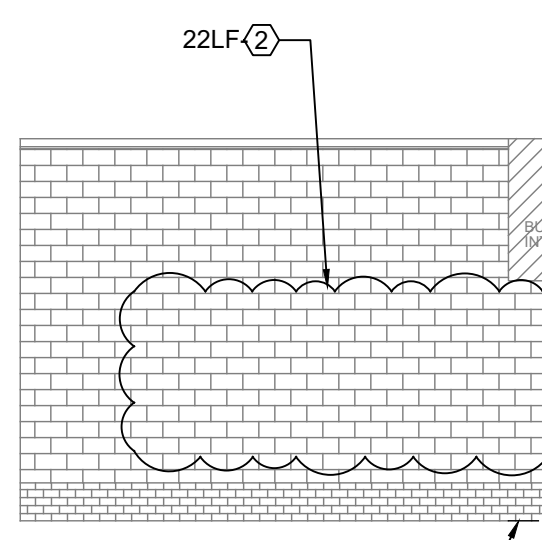
22 ELEVATION

SCALE: 1/8" = 1'-0"



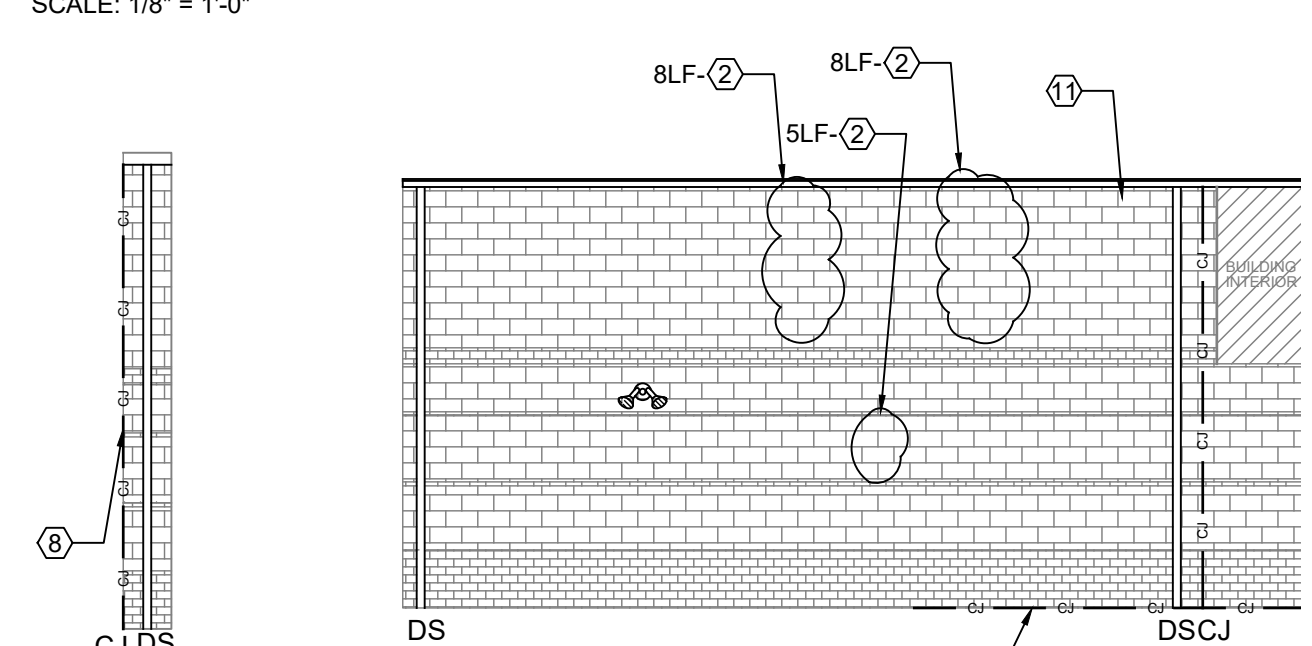
21 ELEVATION

SCALE: 1/8" = 1'-0"



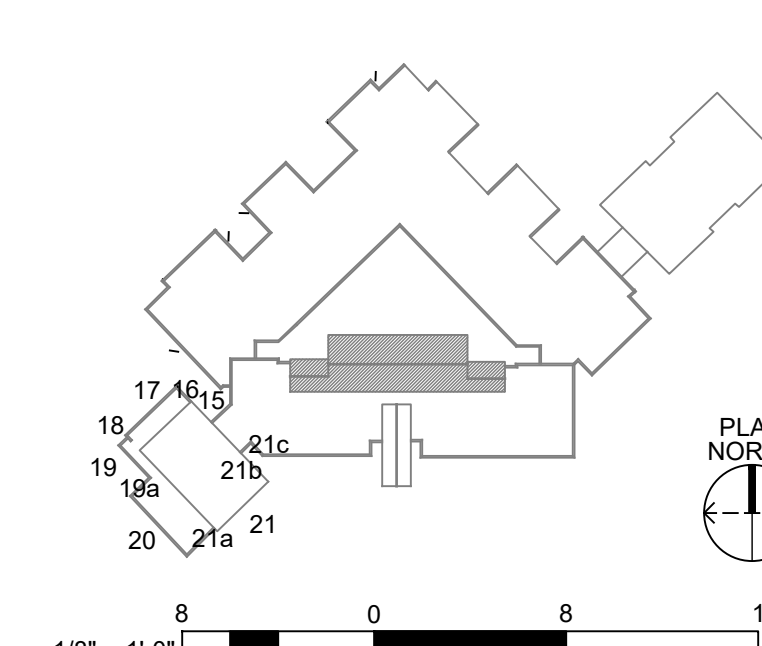
23 ELEVATION

SCALE: 1/8" = 1'-0"



21 ELEVATION 21a, 21b, 21c

SCALE: 1/8" = 1'-0"



- KEY**
- PIPE PENETRATION
 - SECURITY CAMERA
 - SPEAKER BOX
 - WATER SPIGOT
 - ELECTICAL OUTLET
 - VENT
 - WALL PLATE
 - FIRE ALARM BELL
 - FLOOD LIGHT
 - DISCONNECT PANEL
 - DOWNSPOUT NOZZLE
 - FIRE ALARM STROBE
 - CONTROL JOINT/EXPANSION JOINT
 - ELECTRICAL LINE
 - WALL EDGE
 - NOTE NO.
 - DETAIL INDICATOR

1/8" = 1'-0" 8 0 8 16

GENERAL NOTES:
 1. THESE DOCUMENTS ARE THE PROPERTY OF REI ENGINEERS, INC. (REI) AND REI RETAINS ALL RIGHTS THEREIN, INCLUDING COPYRIGHTS. IT MAY ONLY BE USED IN A MANNER CONSISTENT WITH REI'S RIGHTS WHILE REI IS PROVIDING SERVICE FOR THE SPECIFIC PROJECT IDENTIFIED OR REFERRED TO HEREIN OR EXTENSIONS THERETO. IT MAY NOT BE USED FOR ANY OTHER PURPOSE EXCEPT WITH THE EXPRESS WRITTEN AGREEMENT OF, AND COMPENSATION TO, REI ENGINEERS, INC.
 2. DIMENSIONS, DETAIL COMPONENTS AND EQUIPMENT PENETRATION LOCATIONS ARE FOR INFORMATION ONLY. CONTRACTOR IS RESPONSIBLE TO FIELD VERIFY ALL INFORMATION PROVIDED.
 3. ONLY ONE DETAIL INDICATOR MAY BE SHOWN FOR EACH TYPE OF ROOF PENETRATION. ALL OTHER SIMILAR PENETRATIONS ARE TO BE FLASHED AS REQUIRED BY THE TYPICAL DETAIL INDICATOR, UNLESS OTHERWISE NOTED.
 4. NOTES ARE INTENDED TO PROVIDE TYPICAL LOCATIONS OF WORK. IT IS THE CONTRACTOR'S RESPONSIBILITY TO QUANTIFY ALL LOCATIONS.
 5. POWER WAS ALL EXTERIOR WALLS AFTER WORK HAS BEEN COMPLETED.
 6. (ALTERNATE ONE) PROPERLY PREPARE EXTERIOR WALLS AND PROVIDE FLUID APPLIED WATER REPELLENT.
 SHEET NOTES: REFER TO SHEET XW102.



Engineering solutions for tomorrow®

4995 Lacross Rd. | Suite 1325
 Charleston, SC 29406

SOUTH CAROLINA
 CERTIFICATE OF
 AUTHORIZATION #1906
 www.reiengineers.com

SEALS:



PROJECT NAME:

DORCHESTER
 SCHOOL DISTRICT 2

WINDSOR HILL ES PARTIAL
 ROOF REPLACEMENT AND
 EXTERIOR WALL
 RENOVATION

8600 WILLIAM MOULTRIE DRIVE
 NORTH CHARLESTON, SC 29420

PROJECT NO:

24CHS-059

ISSUE:

NO.	DATE	DESCRIPTION
1	03/28/25	PRELIMINARY DOCUMENTS
2	04/11/25	CONTRACT DOCUMENTS

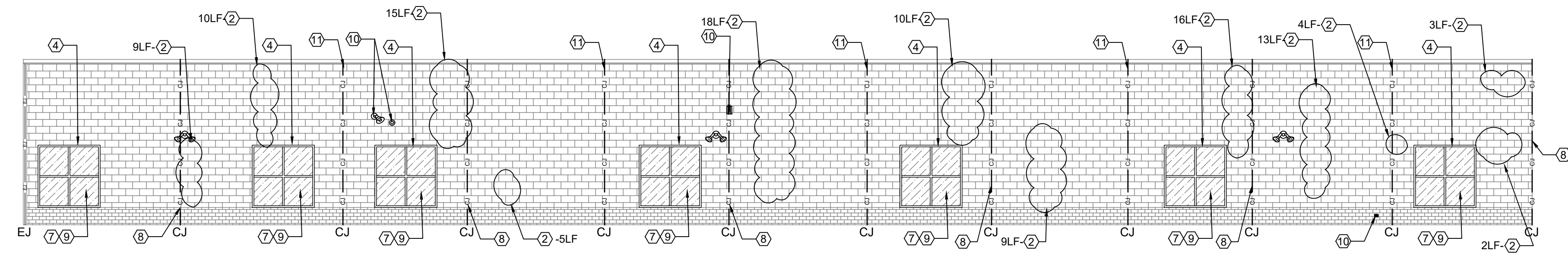
THIS LINE IS 1 INCH ON
 THE ORIGINAL DRAWING
 IF IT IS NOT 1 INCH ON THIS PAGE,
 SCALE DRAWING ACCORDINGLY.

SHEET TITLE

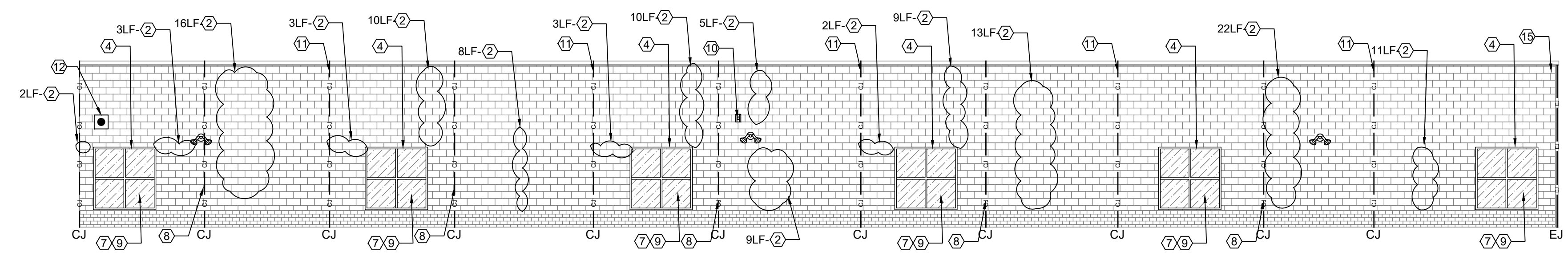
ELEVATIONS

DRAWING

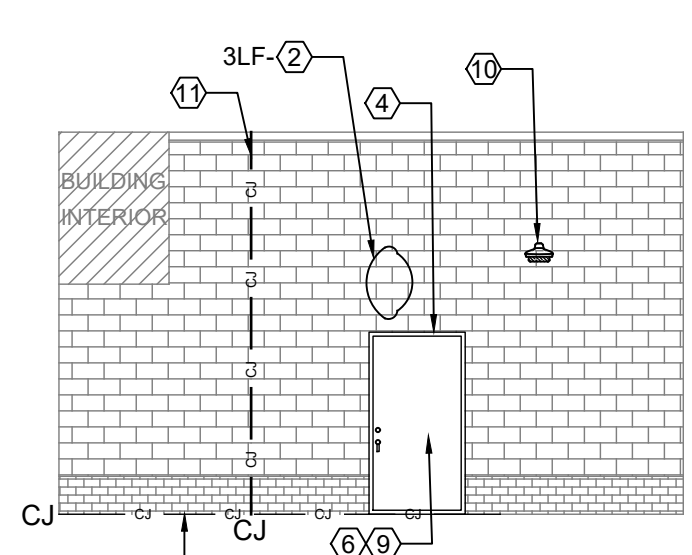
XW206



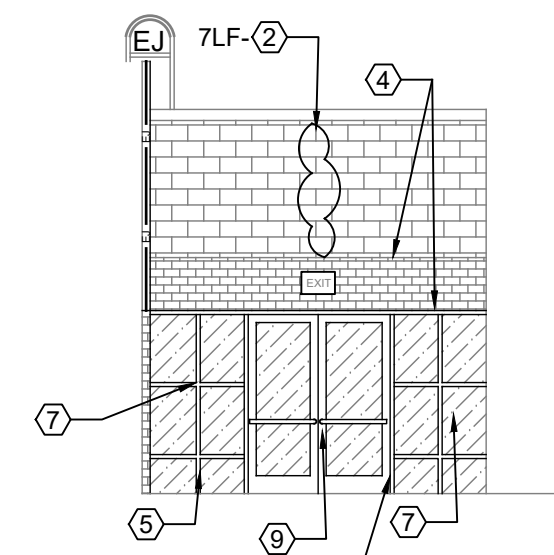
24 ELEVATION
 SCALE: 1/8"=1'-0"



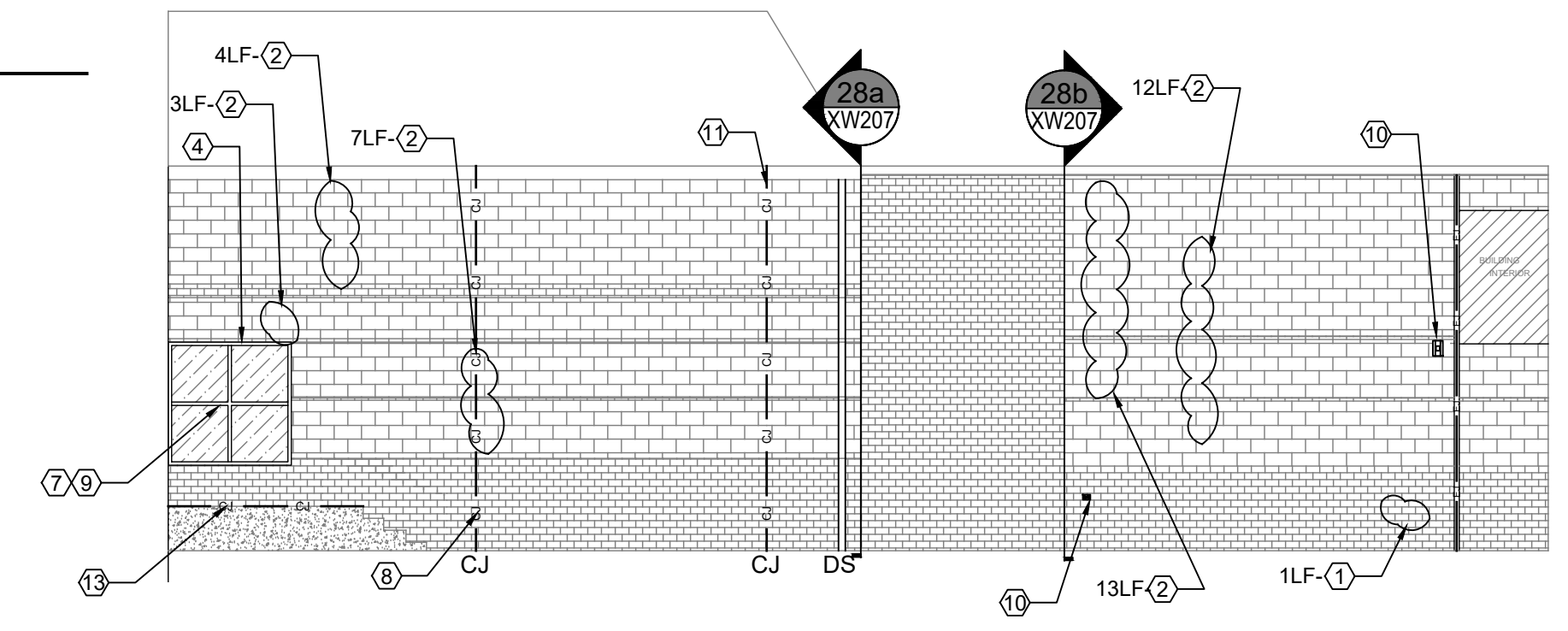
25 ELEVATION
 SCALE: 1/8"=1'-0"



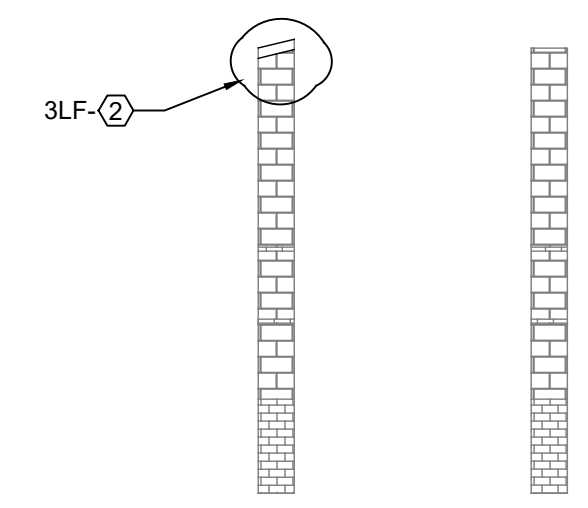
26 ELEVATION
 SCALE: 1/8"=1'-0"



27 ELEVATION
 SCALE: 1/8"=1'-0"



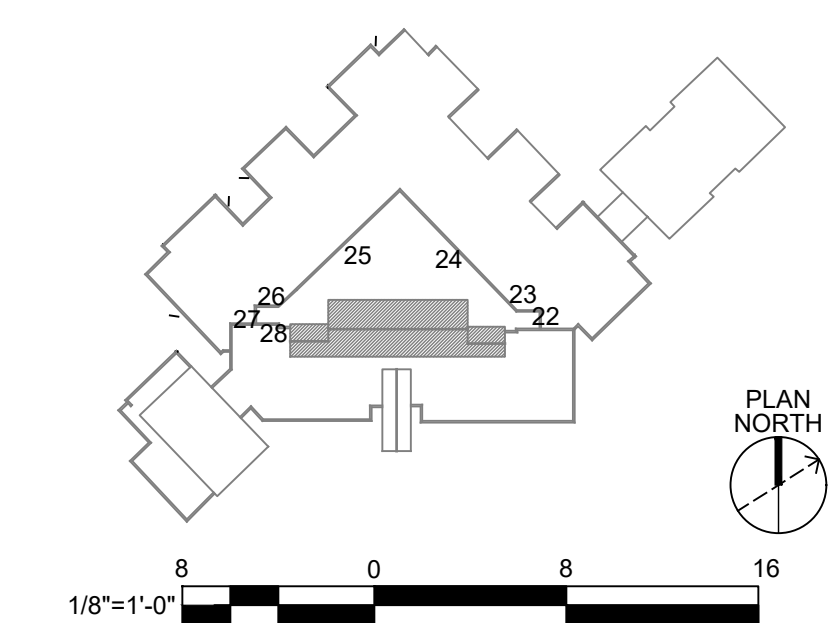
28 ELEVATION
 SCALE: 1/8"=1'-0"

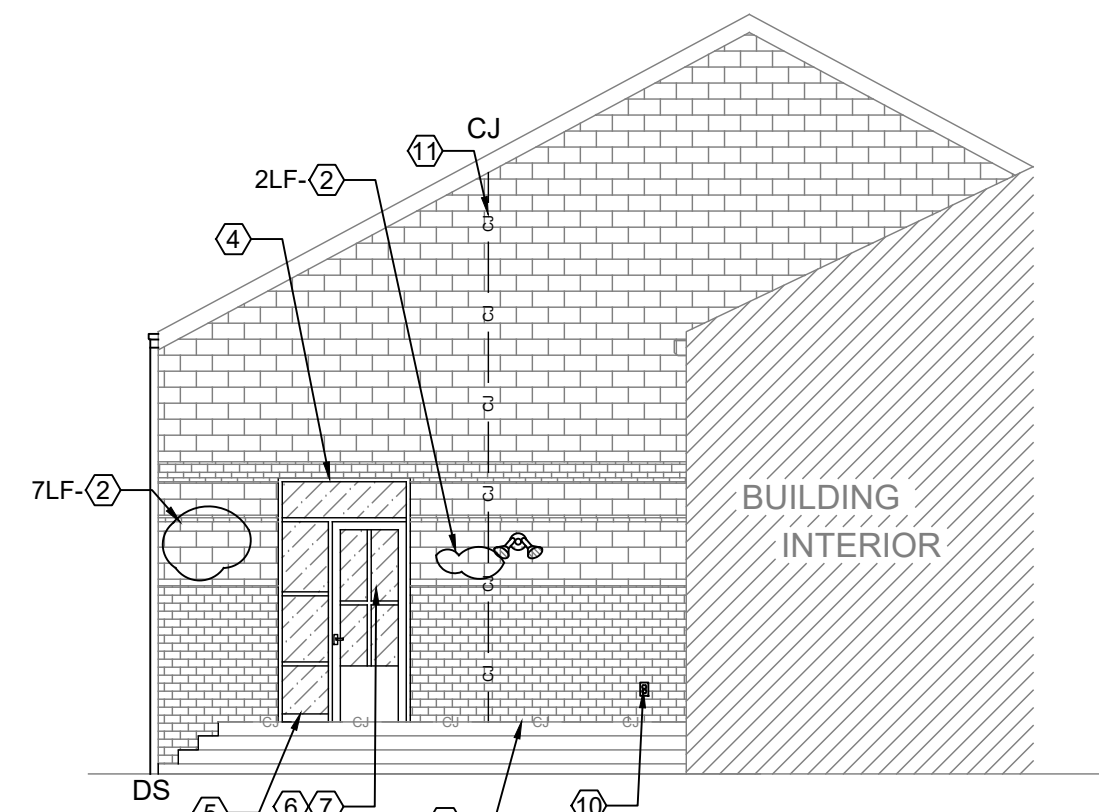


28 ELEVATION, 2a, 28b
 SCALE: 1/8"=1'-0"

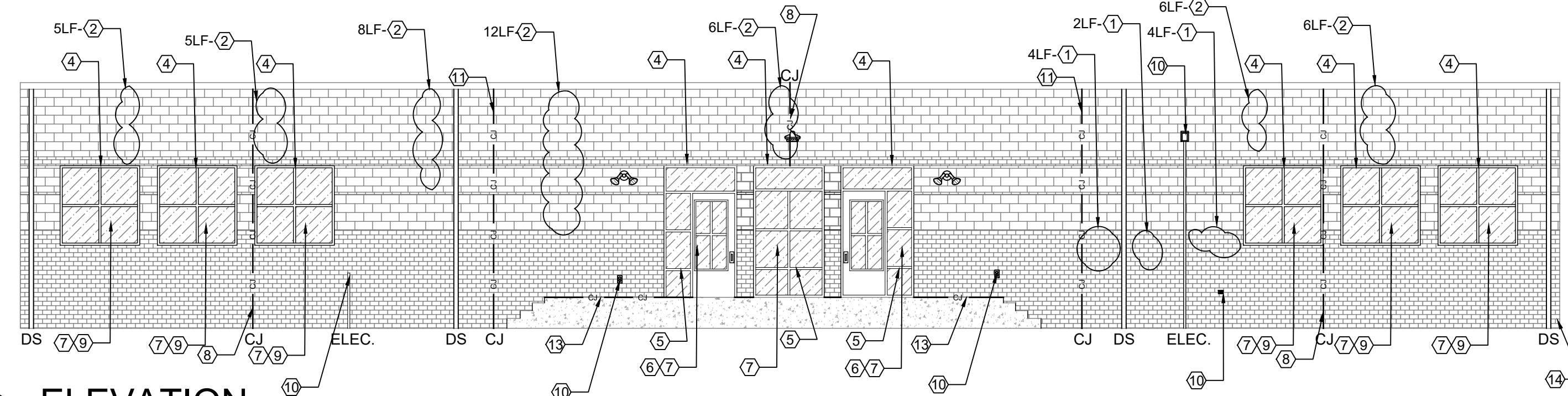
KEY

- PIPE PENETRATION
- SECURITY CAMERA
- SPEAKER BOX
- WATER SPIGOT
- ELECTRICAL OUTLET
- VENT
- WALL PLATE
- FIRE ALARM BELL
- FLOOD LIGHT
- DISCONNECT PANEL
- DOWNSPOUT NOZZLE
- FIRE ALARM STROBE
- CONTROL JOINT/EXPANSION JOINT
- WALL EDGE
- NOTE NO.
- DETAIL INDICATOR

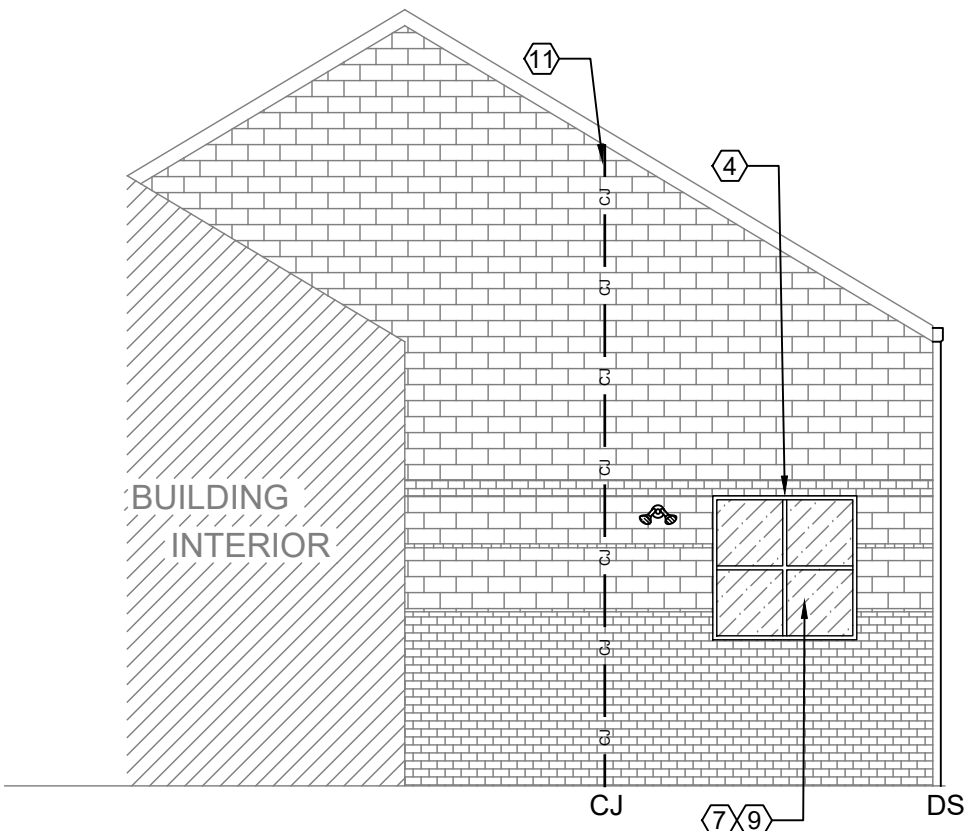




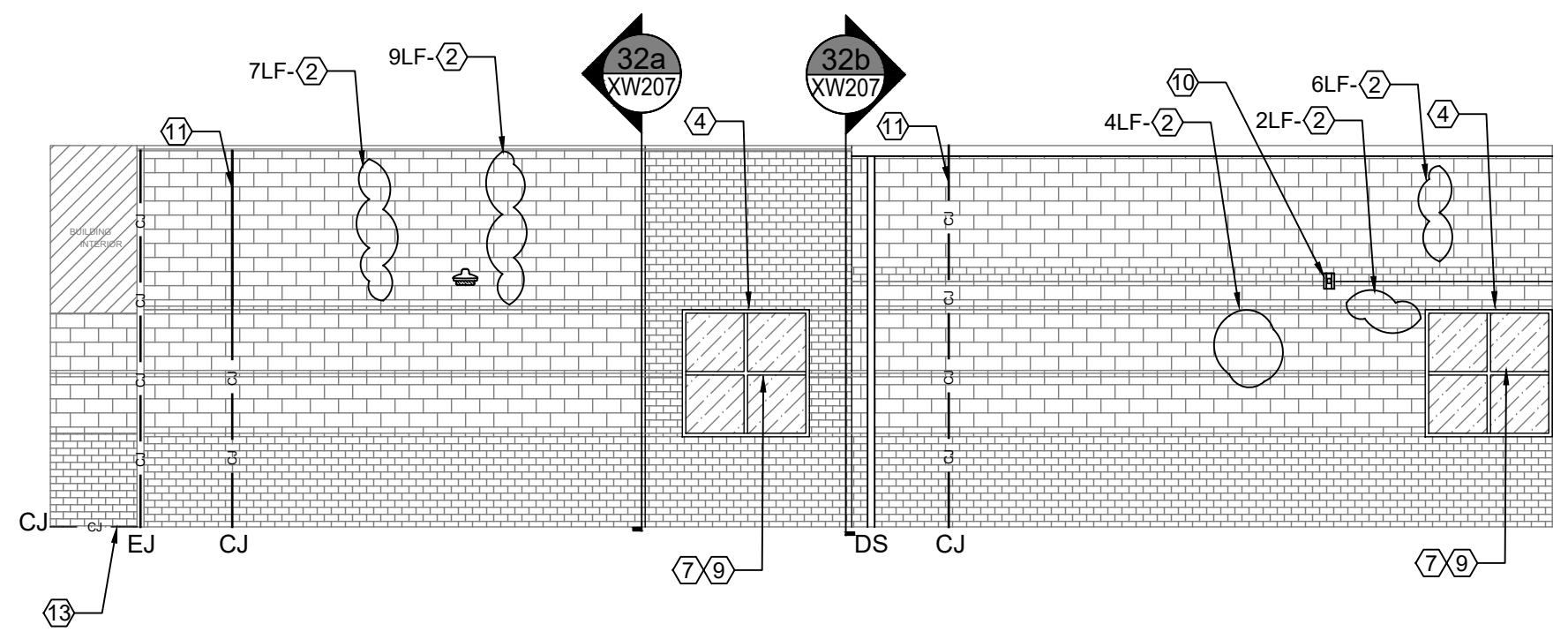
29 ELEVATION
SCALE: 1/8" = 1'-0"



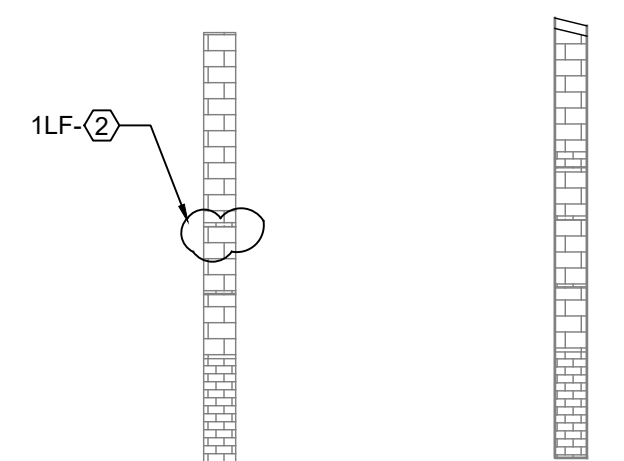
30 ELEVATION
SCALE: 1/8" = 1'-0"



31 ELEVATION
SCALE: 1/8" = 1'-0"



32 ELEVATION
SCALE: 1/8" = 1'-0"

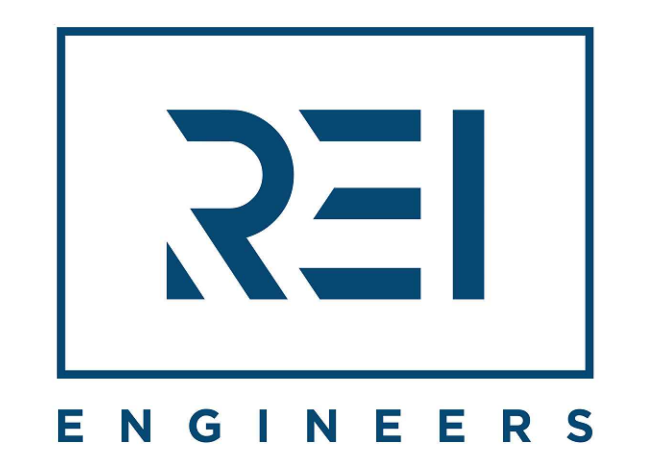


31 ELEVATION 31a, 31b
SCALE: 1/8" = 1'-0"

GENERAL NOTES:

- THESE DOCUMENTS ARE THE PROPERTY OF REI ENGINEERS, INC. (REI) AND REI RETAINS ALL RIGHTS THEREIN, INCLUDING COPYRIGHTS. IT MAY ONLY BE USED IN A MANNER CONSISTENT WITH REI'S RIGHTS WHILE REI IS PROVIDING SERVICE FOR THE SPECIFIC PROJECT IDENTIFIED OR REFERRED TO HEREIN OR EXTENSIONS THERETO. IT MAY NOT BE USED FOR ANY OTHER PURPOSE EXCEPT WITH THE EXPRESS WRITTEN AGREEMENT OF, AND COMPENSATION TO, REI ENGINEERS, INC.
- DIMENSIONS, DETAIL COMPONENTS AND EQUIPMENT PENETRATION LOCATIONS ARE FOR INFORMATION ONLY. CONTRACTOR IS RESPONSIBLE TO FIELD VERIFY ALL INFORMATION PROVIDED.
- ONLY ONE DETAIL INDICATOR MAY BE SHOWN FOR EACH TYPE OF ROOF PENETRATION. ALL OTHER SIMILAR PENETRATIONS ARE TO BE FLASHED AS REQUIRED BY THE TYPICAL DETAIL INDICATOR, UNLESS OTHERWISE NOTED.
- NOTES ARE INTENDED TO PROVIDE TYPICAL LOCATIONS OF WORK. IT IS THE CONTRACTOR'S RESPONSIBILITY TO QUANTIFY ALL LOCATIONS.
- POWER WASH ALL EXTERIOR WALLS AFTER WORK HAS BEEN COMPLETED.
- (ALTERNATE ONE) PROPERLY PREPARE EXTERIOR WALLS AND PROVIDE FLUID APPLIED WATER REPELLENT.

SHEET NOTES: REFER TO SHEET XW102.



Engineering solutions for tomorrow®

4995 Lacross Rd. | Suite 1325
Charleston, SC 29406

SOUTH CAROLINA
CERTIFICATE OF
AUTHORIZATION #1906

www.reiengineers.com

SEALS:



PROJECT NAME:

DORCHESTER
SCHOOL DISTRICT 2

WINDSOR HILL ES PARTIAL
ROOF REPLACEMENT AND
EXTERIOR WALL
RENOVATION

8600 WILLIAM MOULTRIE DRIVE
NORTH CHARLESTON, SC 29420

PROJECT NO:

24CHS-059

ISSUE:

NO.	DATE	DESCRIPTION
1	03/28/25	PRELIMINARY DOCUMENTS
2	04/11/25	CONTRACT DOCUMENTS

THIS LINE IS 1 INCH ON
THE ORIGINAL DRAWING
IF IT IS NOT 1 INCH ON THIS PAGE,
SCALE DRAWING ACCORDINGLY.

SHEET TITLE

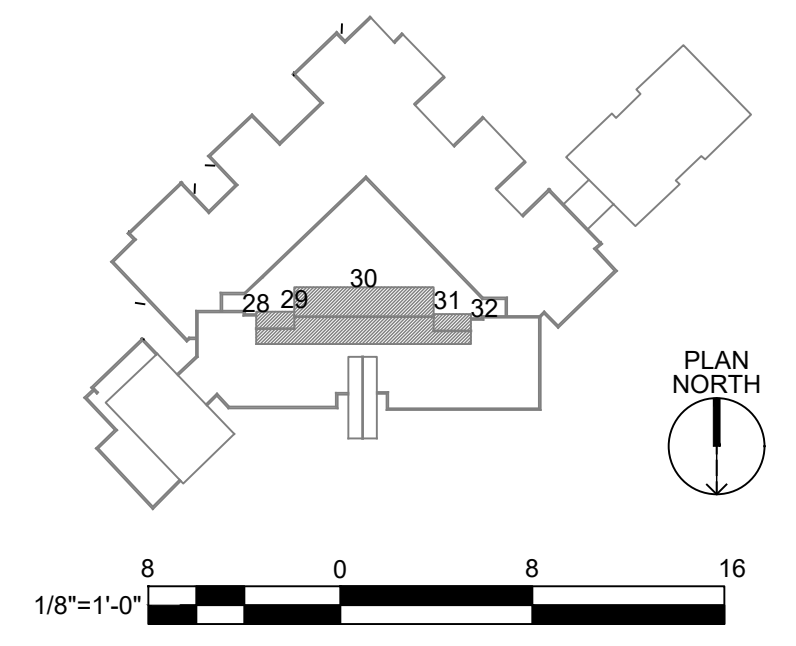
ELEVATIONS

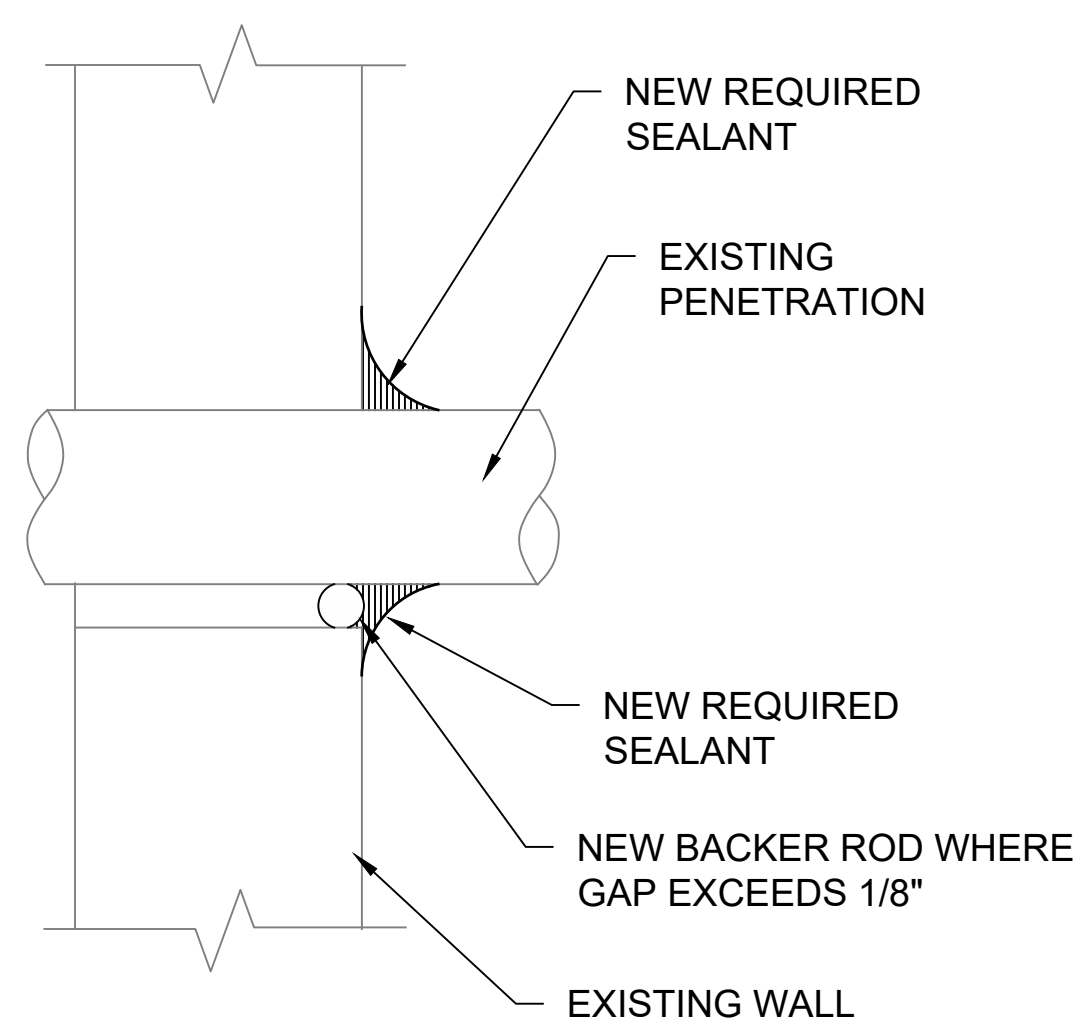
DRAWING

XW207

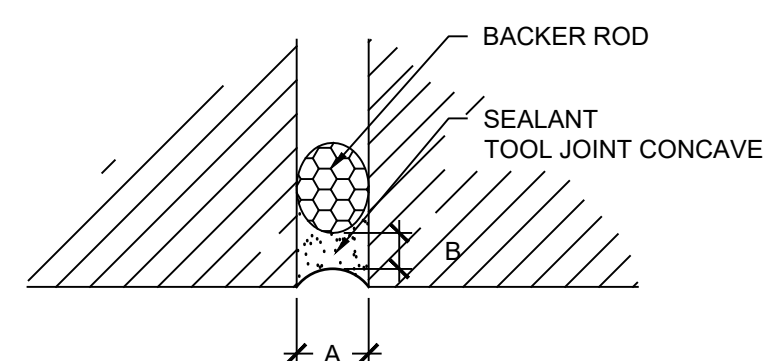
KEY

- PIPE PENETRATION
- 📹 SECURITY CAMERA
- 🔊 SPEAKER BOX
- ⚡ WATER SPIGOT
- 🔌 ELECTRICAL OUTLET
- ☑ VENT
- WALL PLATE
- 🔔 FIRE ALARM BELL
- 🔦 FLOOD LIGHT
- 🔌 DISCONNECT PANEL
- ⬇️ DOWNSPOUT NOZZLE
- 🔦 FIRE ALARM STROBE
- CONTROL JOINT/EXPANSION JOINT
- WALL EDGE
- Ⓝ NOTE NO.
- Ⓜ DETAIL INDICATOR



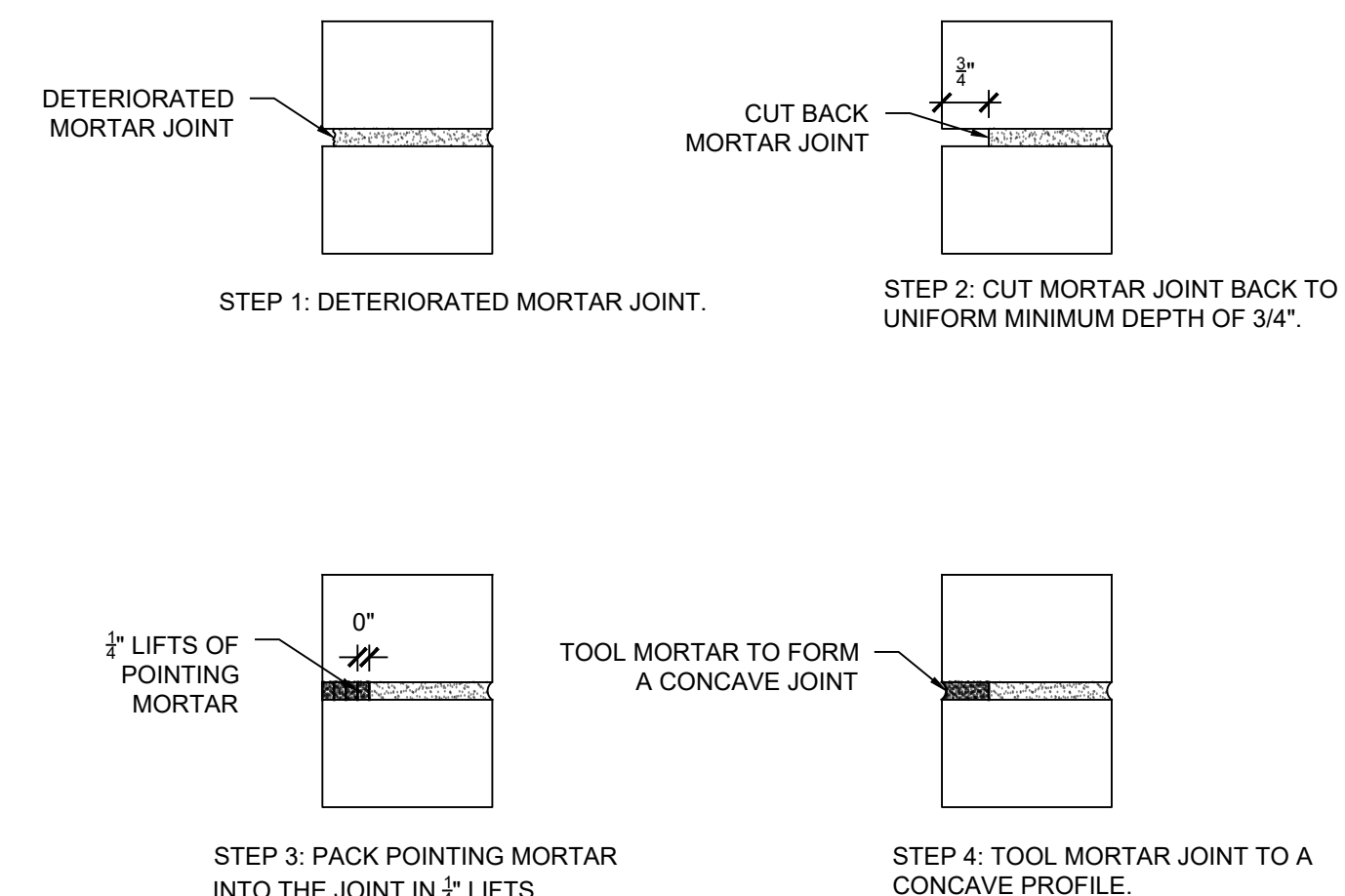


1 WALL PENETRATION SEALANT
SCALE: 3" = 1'-0"



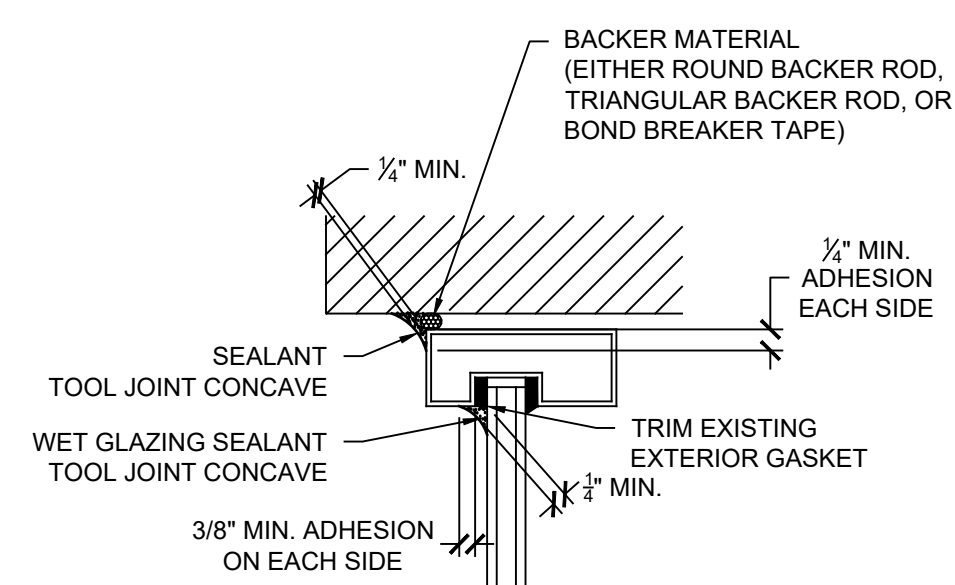
- NOTES:
1. DIMENSION A SHALL BE 1/4" MINIMUM
 2. DIMENSION B SHALL BE 1/4" MIN. AND 1/2" MAX.
 3. RATIO OF A:B SHALL BE 2:1 MINIMUM.
 4. BACKER ROD DIAMETER SHALL BE 25% LARGER THAN JOINT WIDTH.

2 SEALANT (BUTT JOINT)
SCALE: N.T.S.

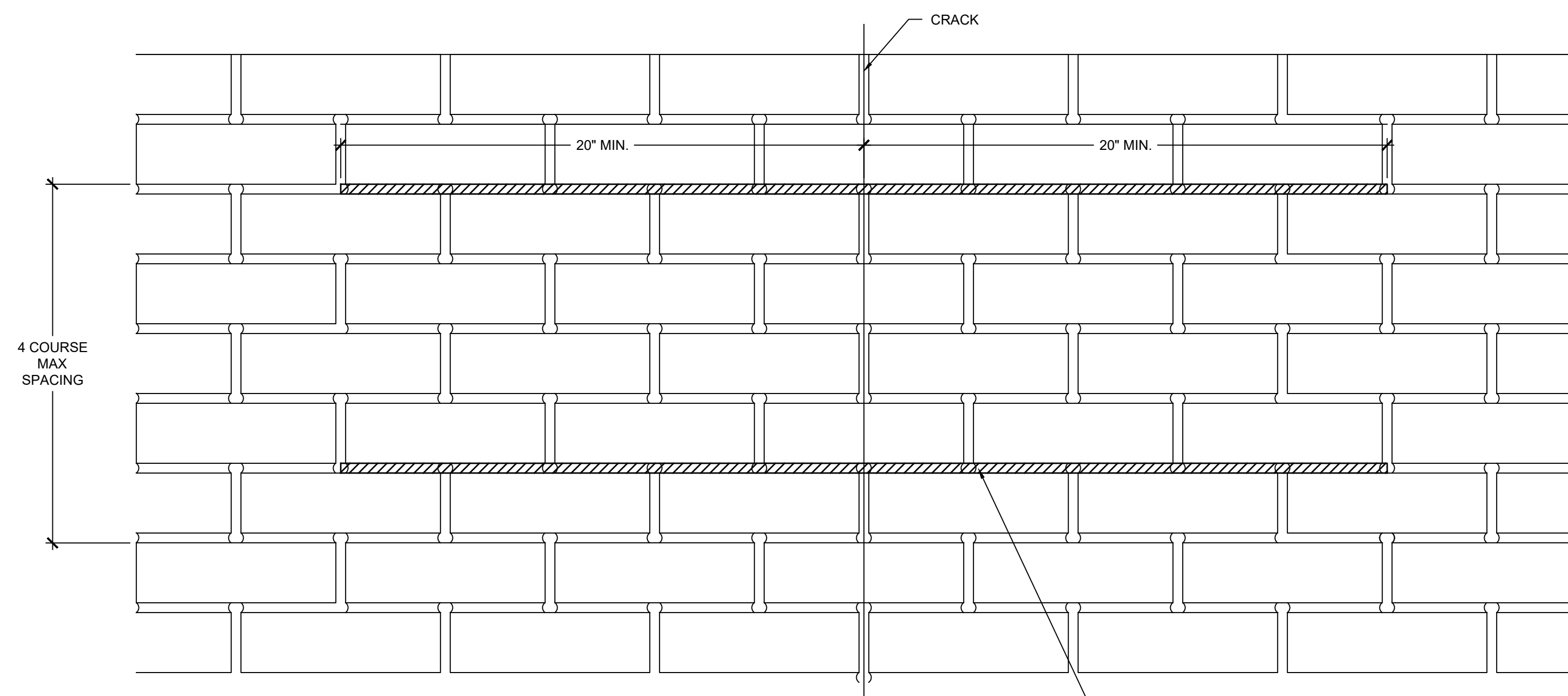


- NOTES:
1. PROVIDE REPOINTING WHERE INDICATED IN CONTRACT DRAWINGS AND BASED ON VISUAL INSPECTION IN ACCORDANCE WITH UNIT PRICES AND QUANTITY ALLOWANCES.

3 MASONRY REPOINTING
SCALE: N.T.S.



4 PERIMETER SEALANT JOINT
SCALE: N.T.S.

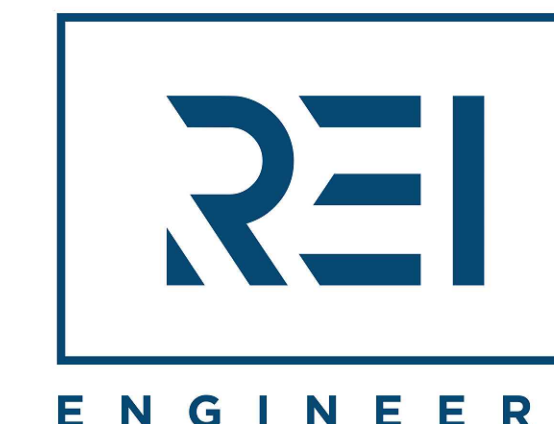


- INSTALLATION NOTES:
1. CUT HORIZONTAL SLOTS IN MORTAR BEADS, EXTENDING 20" BEYOND EXISTING MASONRY CRACKS.
 2. CLEAN SLOTS OF REMAINING DEBRIS USING WATER. INJECT REPAIR GROUT IN THE BACK OF EACH HORIZONTAL SLOT.
 3. INSERT HELICAL REPAIR TIE.
 4. INJECT REPAIR GROUT, FINISHING 3" FROM THE FACE OF EXISTING MASONRY.
 5. REPOINT MASONRY WITH APPROPRIATE MORTAR.

HELICAL REPAIR TIE
MIN. 1-1/4" EMBEDMENT
SET IN MANUFACTURERS GROUT,
TOOL EXPOSED EDGE OF GROUT
TO MATCH EXISTING MORTAR COLOR

5 MASONRY CRACK REPAIR
SCALE: 3" = 1'-0"

GENERAL NOTES:
1. THESE DOCUMENTS ARE THE PROPERTY OF REI ENGINEERS, INC. (REI) AND REI RETAINS ALL RIGHTS THEREIN, INCLUDING COPYRIGHTS. IT MAY ONLY BE USED IN A MANNER CONSISTENT WITH REI'S RIGHTS WHILE REI IS PROVIDING SERVICE FOR THE SPECIFIC PROJECT IDENTIFIED OR REFERRED TO HEREIN OR EXTENSIONS THERETO. IT MAY NOT BE USED FOR ANY OTHER PURPOSE EXCEPT WITH THE EXPRESS WRITTEN AGREEMENT OF, AND COMPENSATION TO, REI ENGINEERS, INC.
2. DIMENSIONS, DETAIL COMPONENTS AND EQUIPMENT PENETRATION LOCATIONS ARE FOR INFORMATION ONLY. CONTRACTOR IS RESPONSIBLE TO FIELD VERIFY ALL INFORMATION PROVIDED.
3. ONLY ONE DETAIL INDICATOR MAY BE SHOWN FOR EACH TYPE OF ROOF PENETRATION. ALL OTHER SIMILAR PENETRATIONS ARE TO BE FLASHED AS REQUIRED BY THE TYPICAL DETAIL INDICATOR, UNLESS OTHERWISE NOTED.
4. NOTES ARE INTENDED TO PROVIDE TYPICAL LOCATIONS OF WORK. IT IS THE CONTRACTORS RESPONSIBILITY TO QUANTIFY ALL LOCATIONS.



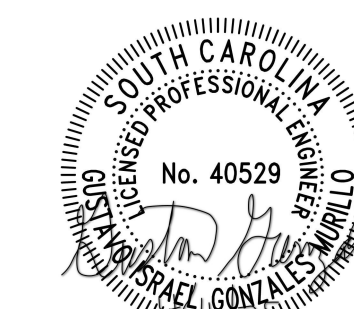
Engineering solutions for tomorrow®

4995 Lacross Rd. | Suite 1325
Charleston, SC 29406

SOUTH CAROLINA
CERTIFICATE OF
AUTHORIZATION #1906

www.reiengineers.com

SEALS:



PROJECT NAME:

DORCHESTER
SCHOOL DISTRICT 2

WINDSOR HILL ES PARTIAL
ROOF REPLACEMENT AND
EXTERIOR WALL
RENOVATION

8600 WILLIAM MOULTRIE DRIVE
NORTH CHARLESTON, SC 29420

PROJECT NO:

24CHS-059

ISSUE:

NO.	DATE	DESCRIPTION
1	03/28/25	PRELIMINARY DOCUMENTS
2	04/11/25	CONTRACT DOCUMENTS

THIS LINE IS 1 INCH ON
THE ORIGINAL DRAWING

IF IT IS NOT 1 INCH ON THIS PAGE,
SCALE DRAWING ACCORDINGLY.

SHEET TITLE

WALL DETAILS

DRAWING

XW501