

SPIRIT WEEK

April
14-17



monday

Western day/Flannel day

tuesday

Dress as your future career



wednesday

Twin Day



thursday

Dress as your favorite

Decade





Weymouth Township School District

1202 Eleventh Avenue - Dorothy, NJ 08317

P: (609) 476-2412 F: (609) 476-3966

Weymouthtownshipschool.org



April 1, 2025

Dear Parents and Guardians,

The New Jersey Student Learning Assessments (NJSLA) will be administered to grades 3-8 during May. Please find the testing schedule below for your reference:

Monday 5/5	Tuesday 5/6	Wednesday 5/7	Thursday 5/8	Friday 5/9
Grades 3&4 ELA Unit 1	Grades 3&4 ELA Unit 2	Grades 3&4 Math Unit 1	Grades 3&4 Math Unit 2	Grades 3&4 Math Unit 3
Monday 5/12	Tuesday 5/13	Wednesday 5/14	Thursday 5/15	Friday 5/16
Grades 5-8 ELA Unit 1	Grades 5-8 ELA Unit 2	Grades 5-8 Math Unit 1	Grades 5-8 Math Unit 2	Grades 5-8 Math Unit 3
Monday 5/19	Tuesday 5/20	Wednesday 5/21	Thursday 5/22	Friday 5/23
Grades 5&8- Science Units 1 & 2	Grades 5&8- Science Units 3 & 4	Algebra I Unit 1 and Makeup Testing	Algebra I Unit 2, and Makeup Testing	Makeup testing for all grades

Important: WIRED headphones are required for the NJSLA and are part of each grade's supply list from the beginning of the year. Please check with your child to make sure they have a set.

Helpful Tips to Support Your Child:

- Students need to get a good night's rest and have a healthy breakfast.
- Students need to be in school and on time every day. Please avoid scheduling trips or appointments during testing days.
- Students with perfect attendance during testing days will receive a reward after testing.

Our students and teachers have put in a lot of hard work to prepare for this assessment. We're confident that together, we can inspire our students to do their best! For more information and access to additional testing resources, please visit the school assessments page on our website. If you have any questions or need further clarification, please don't hesitate to reach out.

Sincerely,

Michelle Mesghali
District Testing Coordinator
609-476-2412 x508

« *Order* your
YEARBOOK
Today!

Don't Miss Your Chance! >>>



inter-state.com/yearbooks

USE ORDER CODE: 91236F

PRICE: \$25.50 + Optional Custom Name \$1.00

ORDER BY: November 1st 2024 - April 11, 2025

CAREER DAY

AN ORGANIZED EVENT WHERE STUDENTS AND PARENTS LEARN ABOUT VARIOUS PROFESSIONS AND CAREER PATHS. OUR PURPOSE IS TO HELP OUR COMMUNITY EXPLORE POTENTIAL CAREER OPTIONS AND GAIN INSIGHT INTO WHAT DIFFERENT JOBS ENTAIL.



Families/Parents planning on attending use QR code to register
WEYMOUTH TOWNSHIP EDUCATION ASSOCIATION

**INVITES YOU TO ATTEND THE
MIDDLE SCHOOL CAREER DAY**

Tuesday

**APRIL 15, 2025
9:30 AM-11:30 AM**

**WEYMOUTH TOWNSHIP SCHOOL
1202 11TH AVENUE
DOROTHY, NJ 08317**

INTENDED FOR STUDENTS AND FAMILIES GRADES 5-8

LIGHT SNACKS WILL BE PROVIDED COURTESY OF THE WTEA



Email for more info: kmerusi@weymouthtsd.org
Lbakker@weymouthtsd.org



Student Council Pet Donation Drive

Collection Dates: Monday, 4/7/2025-4/17/2025

Where: Weymouth Township Elementary School

Donation Wishlist:

- Wet food
- Dry food
- Dye-free kitten food
- Bedding
 - Towels
 - Sheets
- Kitty litter
- Collars
- Leashes
- Cat/dog toys
- Food/water bowls
- Pet carriers/Crates
- Cleaning supplies
- Scrubs for staff
- Office supplies
- Gift cards: PetSmart, Home Depot, Lowes, Staples



All donations will be donated to the South Jersey Regional Animal Shelter in Vineland, New Jersey.

Thank you for your support



ESTELL MANOR SCHOOL

Special Education
Parent Advisory
Group

WEDNESDAY, MAY 7TH 2025
5PM

ESTELL MANOR SCHOOL
128 CAPE MAY AVENUE,
ESTELL MANOR, NJ 08319



Atlantic County Prosecutors
Office Presents:

AID - Alliance for Individuals with Disabilities




The goal of the A.I.D. Program is to ensure all residents who have a disability or special need are able to get the help and support they need in a time of emergency or during interaction with Law Enforcement, Fire or EMS personnel.

Buena and Weymouth Twp.
families welcome to attend



[Click Here to
RSVP via
Google Forms](#)



ESTELL MANOR HSA PRESENTS

Egg My Yard

Pick a Day

Friday April 11th or Friday April 18th

Current Estell & Weymouth Students

THE ESTELL MANOR HSA WILL HOP ON OVER AND HIDE EGGS WITH INDIVIDUALLY WRAPPED CANDY IN YOUR YARD FOR YOUR CHILDREN TO FIND! GET HOPPING AND DON'T MISS OUT ON THE FUN!

25 EGGS = \$20 DONATION

50 EGGS = \$30 DONATION

75 EGGS = \$40 DONATION

100 EGGS = \$50 DONATION

WE CAN ALSO FILL THE EGGS AND DELIVER FOR YOU TO HIDE WHEN IT IS CONVENIENT FOR YOUR FAMILY.

FIND THE LINK TO SIGN UP IN YOUR EMAIL OR ON OUR FACEBOOK PAGE @ ESTELL MANOR HSA

Request Deadline: April 9, 2025

Payment must be made by April 9

QUESTIONS?

EMAIL US AT HSA@ESTELLMANORSCHOOL.COM



Easter Safety Tips

Eggs

- Properly cook and handle the eggs that you plan to decorate.

Hiding spots

- Choose safe areas to hide Easter Eggs!
- Indoors, avoid: outlets, open doorways, stairs and windows
- Outdoors, avoid: potential wild animals, bugs, poison ivy or thorn bushes

Candies & Allergies

- Be sure of any potential allergies of other children before choosing snacks or treats.
- Make sure an epipen is nearby for extra precaution

Dorothy Volunteer Fire Company

Easter Egg Hunt

FREE EASTER EGG HUNT
FOR KIDS OF ALL AGES

Month

04

Date

12

Year

25

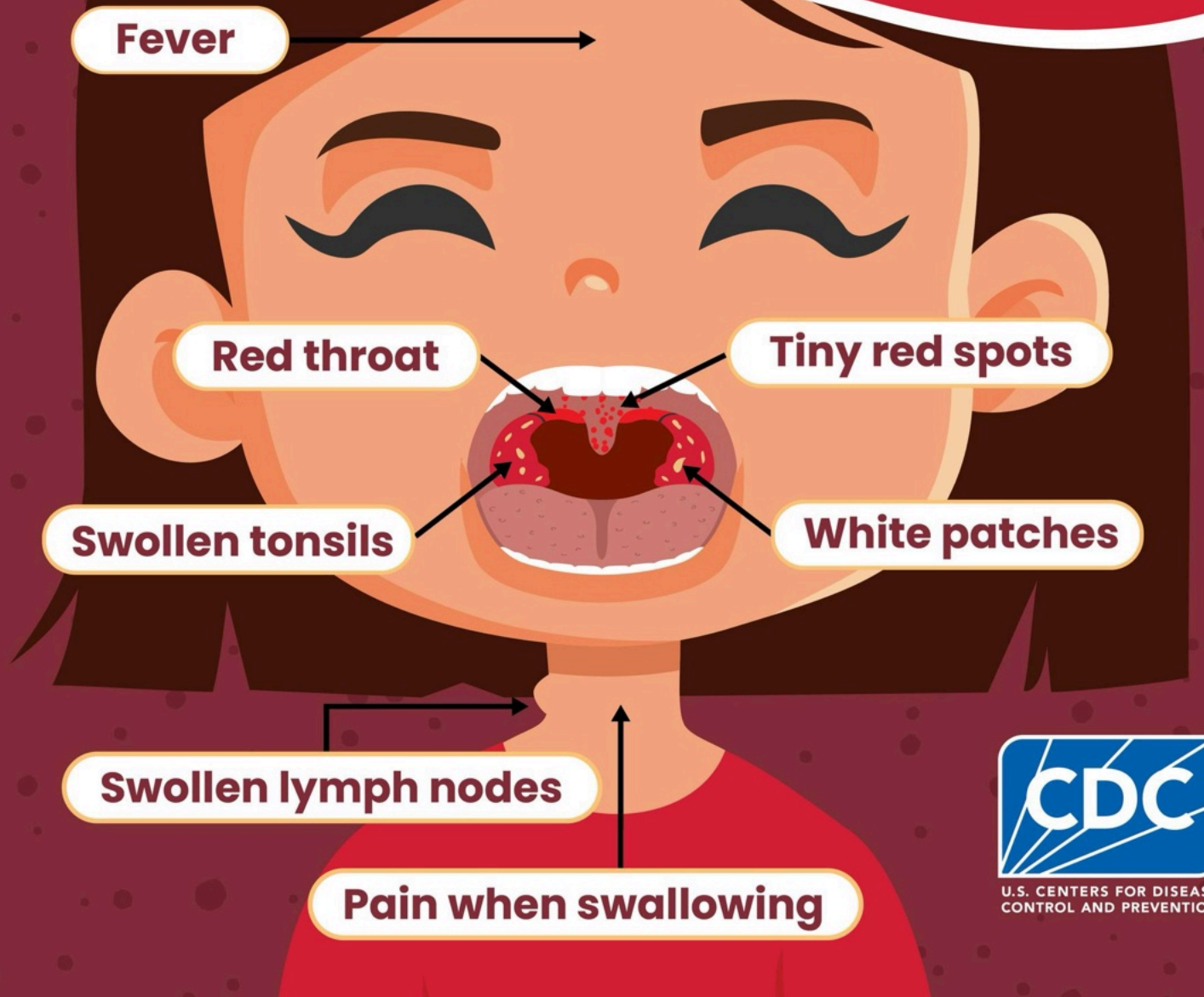
11AM

1201 Loretta Ave,
Mays Landing, NJ 08330
@ Belcoville Community Center



Signs and Symptoms of **Strep Throat**

Usually include:





Meet Your Nutritious Friend:
Preppy Plantain

Monday	Tuesday	Wednesday	Thursday	Friday	Offered Daily
	1 Oatmeal Breakfast Bar Fruit 1% White Milk	2 Cinnamon Chex Fruit 1% White Milk	3 Warm Muffin Fruit 1% White Milk	4 Kix Cereal Fruit 1% White Milk	<p>What is a Meal? Pre-K students are served the three following components for school breakfast.</p> <ul style="list-style-type: none"> - Whole Grain - Fresh Fruit or Cupped - 1% White Milk <p>Whole Grain Cereals Cinnamon Toast Crunch, Cinnamon Chex, Kix</p>
7 Cinnamon Toast Crunch Fruit 1% White Milk	8 Oatmeal Breakfast Bar Fruit 1% White Milk	9 Cinnamon Chex Fruit 1% White Milk	10 Warm Muffin Fruit 1% White Milk	11 Kix Cereal Fruit 1% White Milk	
14 Cinnamon Toast Crunch Fruit 1% White Milk	15 Oatmeal Breakfast Bar Fruit 1% White Milk	16 Cinnamon Chex Fruit 1% White Milk	17 Warm Muffin Fruit 1% White Milk	18 No School	
21 No School	22 No School	23 No School	24 No School	25 No School	
28 Cinnamon Toast Crunch Fruit 1% White Milk	29 Oatmeal Breakfast Bar Fruit 1% White Milk	30 Cinnamon Chex Fruit 1% White Milk			

Rachel Adams, Food Service Director
609-476-2412 ext. 5
wey@nsfm.com

Meal Prices
Student Breakfast \$1.75
Reduced Breakfast \$0.00
Faculty Breakfast \$2.25



Menu subject to change due to product availability. This institution is an equal opportunity provider and employer.



Meet Your Nutritious Friend:
Preppy Plantain

Monday	Tuesday	Wednesday	Thursday	Friday	Offered Daily
	1 Pancakes & Sausage Grape Tomatoes Cupped or Fresh Fruit 1% White Milk	2 Grilled Cheese Fries Cupped or Fresh Fruit 1% White Milk	3 Hot Dog on a Bun Fresh Broccoli Cupped or Fresh Fruit 1% White Milk	4 Cheesy Pizza Veggie Patch Cupped or Fresh Fruit 1% White Milk	<p>What is a Meal? Students are served in the classroom.</p> <ul style="list-style-type: none"> - Whole Grain - Protein - Vegetable - Fruit -1% Milk <p>Daily Alternates Uncrustable Meal with Veggie, Fruit and 1% White Milk</p>
7 Chicken Nuggets Fresh Cucumber Slices Cupped or Fresh Fruit 1% White Milk	8 Pancakes & Sausage Grape Tomatoes Cupped or Fresh Fruit 1% White Milk	9 Grilled Cheese Celery & Carrots Cupped or Fresh Fruit 1% White Milk	10 Hot Dog on a Bun Corn Cupped or Fresh Fruit 1% White Milk	11 Pizza Dippers Veggie Patch Cupped or Fresh Fruit 1% White Milk	
14 Chicken Nuggets Fries Cupped or Fresh Fruit 1% White Milk	15 Pancakes & Sausage Grape Tomatoes Cupped or Fresh Fruit 1% White Milk	16 Grilled Cheese Sweet Peas Cupped or Fresh Fruit 1% White Milk	17 Hot Dog on a Bun Fresh Broccoli Cupped or Fresh Fruit 1% White Milk	18 No School	
21 No School	22 No School	23 No School	24 No School	25 No School	
28 Chicken Nuggets Corn Cupped or Fresh Fruit 1% White Milk	29 Pancakes & Sausage Fries Cupped or Fresh Fruit 1% White Milk	30 Grilled Cheese Celery & Carrots Cupped or Fresh Fruit 1% White Milk			

Rachel Adams, Food Service Director
609-476-2412 ext. 5
wey@nsfm.com

Meal Prices

Student Lunch	\$3.50
Reduced Lunch	\$0.00
Faculty Lunch	\$4.50





Meet Your Nutritious Friend:
Preppy Plantain

Monday	Tuesday	Wednesday	Thursday	Friday	Offered Daily
	1 Mini Maple Pancakes Fresh or Cupped Fruit Orange Juice	2 Cream Cheese Filled Bagel Fresh or Cupped Fruit Orange Juice	3 Warm Muffin Fresh or Cupped Fruit Orange Juice	4 Egg & Cheese Bagel Fresh or Cupped Fruit Orange Juice	<p>What is a Meal? Pre-K students are served the three following components for school breakfast.</p> <ul style="list-style-type: none"> - Whole Grain - Fresh Fruit or Cupped - 1% White Milk <p>Whole Grain Cereals Cinnamon Toast Crunch, Kix, Cinnamon Chex</p>
7 Cinnamon Toast Crunch Jump Start Fresh or Cupped Fruit Orange Juice	8 Mini Maple Pancakes Fresh or Cupped Fruit Orange Juice	9 Cream Cheese Filled Bagel Fresh or Cupped Fruit Orange Juice	10 Warm Muffin Fresh or Cupped Fruit Orange Juice	11 Egg & Cheese Bagel Fresh or Cupped Fruit Orange Juice	
14 Cinnamon Toast Crunch Jump Start Fresh or Cupped Fruit Orange Juice	15 Mini Maple Pancakes Fresh or Cupped Fruit Orange Juice	16 Cream Cheese Filled Bagel Fresh or Cupped Fruit Orange Juice	17 Warm Muffin Fresh or Cupped Fruit Orange Juice	18 No School	
21 No School	22 No School	23 No School	24 No School	25 No School	
28 Cinnamon Toast Crunch Jump Start Fresh or Cupped Fruit Orange Juice	29 Mini Maple Pancakes Fresh or Cupped Fruit Orange Juice	30 Cream Cheese Filled Bagel Fresh or Cupped Fruit Orange Juice			

Rachel Adams, Food Service Director
609-476-2412 ext. 5
wey@nsfm.com

Meal Prices
Student Breakfast \$1.75
Reduced Breakfast \$0.00
Faculty Breakfast \$2.25





**Meet Your Nutritious Friend:
Preppy Plantain**

Monday	Tuesday	Wednesday	Thursday	Friday	Offered Daily	
	<p>Nachos Grande 1</p> <p>Buffalo Chicken Wrap</p> <p>FEATURED VEGGIES Refried Beans Grape Tomatoes</p>	<p>Sloppy Joe on a Hawaiian Roll 2</p> <p>Turkey & Cheese Sandwich</p> <p>FEATURED VEGGIES Fries Celery & Carrots Sticks</p>	<p>Chili & Cornbread 3</p> <p>Chicken Salad Wrap</p> <p>FEATURED VEGGIES Sweet Peas Fresh Broccoli</p>	<p>Cheesy Pizza 4</p> <p>Cheeseburger</p> <p>FEATURED VEGGIES Veggie Patch Side Salad</p>	<p>What is a Meal? Students must choose at least 3 of the 5 components available for the school lunch price.</p> <ul style="list-style-type: none"> - Choice of Whole Grain - Choice of Protein - Choice of Vegetable - Choice of Fruit - Choice of Milk <p>A minimum ½ cup serving of fruit or vegetable must accompany a reimbursable lunch.</p> <p>Salad of the Week</p> <p>All Salads are served with a Dinner Roll or Tortilla Chips</p> <p>Week-1 (Chicken Caesar Salad)</p> <p>Week-2 (Fajita Chicken Salad)</p> <p>Week-3 (Chef's Salad)</p> <p>Week-4 (Buffalo Chicken Salad)</p> <p>Choice of Fruit</p> <p>Seasonal fresh fruits, canned fruit in light syrup, 100% fruit juice</p> <p>Choice of Milk</p> <p>1% white, chocolate, and strawberry</p> <p>Daily Alternates</p> <p>Uncrustable Meal with Cheese Stick and Goldfish</p>	
<p>Chicken & Cheese Quesadilla 7</p> <p>Ham & Cheese Sandwich</p> <p>FEATURED VEGGIES Refried Beans Fresh Cucumber Slices</p>	<p>Chicken Parm. with Pasta 8</p> <p>Buffalo Chicken Wrap</p> <p>FEATURED VEGGIES Green Beans Grape Tomatoes</p>	<p>BBQ Pulled Pork on a Hawaiian Roll 9</p> <p>Turkey & Cheese Sandwich</p> <p>FEATURED VEGGIES Fries Celery & Carrots Sticks</p>	<p>Grilled Cheese 10</p> <p>Chicken Salad Wrap</p> <p>FEATURED VEGGIES Corn Fresh Broccoli</p>	<p>Pizza Dippers 11</p> <p>Cheeseburger</p> <p>FEATURED VEGGIES Veggie Patch Side Salad</p>		
<p>Scrambled Eggs & Pancakes 14</p> <p>Ham & Cheese Sandwich</p> <p>FEATURED VEGGIES Fries Fresh Cucumber Slices</p>	<p>Hot Ham & Cheese on a Pretzel Bun 15</p> <p>Buffalo Chicken Wrap</p> <p>FEATURED VEGGIES Baked Beans Grape Tomatoes</p>	<p>Beefaroni 16</p> <p>Turkey & Cheese Sandwich</p> <p>FEATURED VEGGIES Sweet Peas Celery & Carrots Sticks</p>	<p>Fish Sticks & Goldfish 17</p> <p>Chicken Salad Wrap</p> <p>FEATURED VEGGIES Corn Fresh Broccoli</p>	<p>No School 18</p>		
<p>No School 21</p>	<p>No School 22</p>	<p>No School 23</p>	<p>No School 24</p>	<p>No School 25</p>		
<p>Chicken Nuggets & Goldfish 28</p> <p>Ham & Cheese Sandwich</p> <p>FEATURED VEGGIES Corn Fresh Cucumber Slices</p>	<p>French Toast & Sausage 29</p> <p>Buffalo Chicken Wrap</p> <p>FEATURED VEGGIES Fries Grape Tomatoes</p>	<p>BBQ Baked Chicken with Cornbread 30</p> <p>Turkey & Cheese Sandwich</p> <p>FEATURED VEGGIES Baked Beans Celery & Carrots Sticks</p>				
<p>Rachel Adams, Food Service Director 609-476-2412 ext. 5 wey@nsfm.com</p>			<p>Meal Prices</p> <p>Student Lunch \$3.50 Reduced Lunch \$0.00 Faculty Lunch \$4.50</p>			

Menu subject to change due to product availability. This institution is an equal opportunity provider and employer.