

ESTELL MANOR SCHOOL DISTRICT

FRIDAY FOLDER

WEEK 31: April 7, 2025

<u>MONDAY</u> April 7, 2025	Choir: 8am in Room 133 Softball: Starts 3 rd Marking Period: Ends
<u>TUESDAY</u> April 8, 2025	Band: 8am in Room 133 4 th Marking Period: Begins
<u>WEDNESDAY</u> April 9, 2025	Band: 8am in Room 133
<u>THURSDAY</u> April 10, 2025	WIN THE DAY!
<u>FRIDAY</u> April 11, 2025	HSA Egg My Yard: 7pm
<u>REMINDERS</u>	<p>April 16: Student Council Easter Egg Hunt: Schoolwide: 1st Period</p> <p>April 17: Bus Driver Appreciation Day</p> <p>April 17: Yearbook Meeting</p> <p>April 17: Early Dismissal: Students and Staff</p> <p>April 18-25: Spring Break: School Closed</p> <p>April 28: Kindergarten Book Club: 3:30-4:15pm</p> <p>April 29: Heart Health: Kick-off Event: 10am in Gym: School wide</p> <p>April 29: Softball vs Dennis Twp: 3:45pm</p> <p>April 30: Board of Education Meeting: 6pm in Media Center</p> <p>May 1: Softball vs Crest Memorial: 3:45pm</p> <p>May 1: Intramurals: 3:30pm</p> <p>May 2: School Lunch Hero Day</p> <p>May 3: HSA Spring Clothing Drive</p> <p>May 5: Staff Appreciation Week</p> <p>May 5: Kindergarten Book Club: 3:30-4:15pm</p> <p>May 7: Nurse's Day</p> <p>May 7: Softball vs Wildwood: 3:45pm</p> <p>May 7: Special Education Parent Advisory Meeting: 5pm in Media Center</p> <p>May 8: Intramurals: 3:30pm</p> <p>May 9: 4th Grade: Girl Scout Bag: Giveaway</p> <p>May 9: Softball at Avalon</p> <p>May 12: <i>NJSLA Testing: Beings: ELA</i></p> <p>May 12: Kindergarten Book Club: 3:30-4:15pm</p> <p>May 12: Softball at Wildwood Catholic</p> <p>May 13: <i>NJSLA Testing: ELA</i></p> <p>May 14: <i>NJSLA Testing: Science</i></p> <p>May 14: Softball at Wildwood</p> <p>May 15: <i>NJSLA Testing: Science</i></p> <p>May 15: HSA Frozen Treat Truck</p> <p>May 15: Intramurals: 3:30pm</p> <p>May 16: Softball at Crest Memorial</p>

Have a Great Weekend! **David L. Ricci- Superintendent**

ESTELL MANOR | 2024-2025 CALENDAR

SEPTEMBER '24						
S	M	T	W	Th	F	S
1	2	3	4	5	6	7
8	9	10	11	12	13	14
15	16	17	18	19	20	21
22	23	24	25	26	27	28
29	30					

2 Closed – Labor Day
 3 Teacher-In-Service
 4 First Day of School
 12 Back to School Night
 12 Early Dismissal

S-19
 T-20

FEBRUARY '25						
S	M	T	W	Th	F	S
						1
2	3	4	5	6	7	8
9	10	11	12	13	14	15
16	17	18	19	20	21	22
23	24	25	26	27	28	

10 Teacher In-Service
 17 Presidents' Day
 12 Snow Day

S-17
 T-18

OCTOBER '24						
S	M	T	W	Th	F	S
			1	2	3	4
5	6	7	8	9	10	11
12	13	14	15	16	17	18
19	20	21	22	23	24	25
26	27	28	29	30	31	

14 Columbus Day

S-22
 T-22

MARCH '25						
S	M	T	W	Th	F	S
						1
2	3	4	5	6	7	8
9	10	11	12	13	14	15
16	17	18	19	20	21	22
23	24	25	26	27	28	29
30	31					

6,7 P & T Conferences
 6,7 Early Dismissal

S-21
 T-21

NOVEMBER '24						
S	M	T	W	Th	F	S
					1	2
3	4	5	6	7	8	9
10	11	12	13	14	15	16
17	18	19	20	21	22	23
24	25	26	27	28	29	30

4-6 P & T Conferences
 7-8 NJEA Convention
 27 Early Dismissal
 28,29 Thanksgiving Break

S-17
 T-17

APRIL '25						
S	M	T	W	Th	F	S
		1	2	3	4	5
6	7	8	9	10	11	12
13	14	15	16	17	18	19
20	21	22	23	24	25	26
27	28	29	30			

17 Early Dismissal
 18-25 Spring Break

S-16
 T-16

DECEMBER '24						
S	M	T	W	Th	F	S
1	2	3	4	5	6	7
8	9	10	11	12	13	14
15	16	17	18	19	20	21
22	23	24	25	26	27	28
29	30	31				

20 Early Dismissal
 23-31 Winter Break

S-15
 T-15

MAY '25						
S	M	T	W	Th	F	S
				1	2	3
4	5	6	7	8	9	10
11	12	13	14	15	16	17
18	19	20	21	22	23	24
25	26	27	28	29	30	31

26 Memorial Day

S-21
 T-21

JANUARY '25						
S	M	T	W	Th	F	S
			1	2	3	4
5	6	7	8	9	10	11
12	13	14	15	16	17	18
19	20	21	22	23	24	25
26	27	28	29	30	31	

1 New Year's Day
 2 School Resumes
 10 Teacher In-Service
 20 M.L. King Day
 6 Snow Day

S-19
 T-20

JUNE '25						
S	M	T	W	Th	F	S
1	2	3	4	5	6	7
8	9	10	11	12	13	14
15	16	17	18	19	20	21
22	23	24	25	26	27	28
29	30					

16-18 Early Dismissal
 17 8th gr. Graduation
 18 Last Day of School

*Last day of school may adjust to reflect 180 school days.

S-13
 T-13

Marking Period 1	Marking Period 2	Marking Period 3	Marking Period 4
9/4/24 – 11/6/24	11/11/24 – 1/29/25	1/30/25 – 4/7/25	4/8/25 – 6/18/25
Interims close: 10/3/24	Interims close: 12/12/24	Interims close: 3/4/25	Interims close: 5/14/25
Parent/Teacher Conferences:			
November 4 th & 5 th Evening /November 6 th Afternoon			
March 6 th Evening /March 7 th Afternoon			



= School Closed Teacher In-service

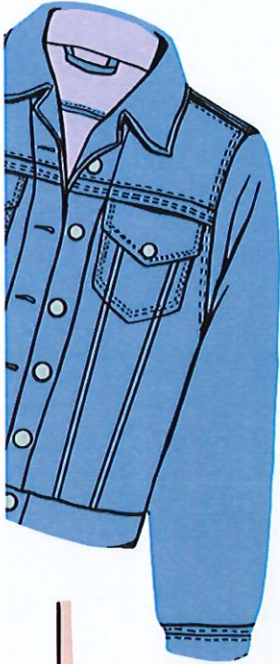
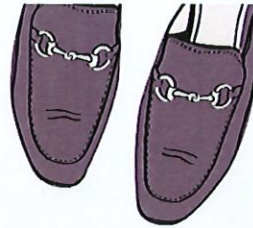


= School Closed for Students/Staff



= 1:30 Dismissal

Additional days will be added to the calendar in the event of emergency closings.



ESTELL MANOR HSA

Clothing Drive

Saturday May 3rd

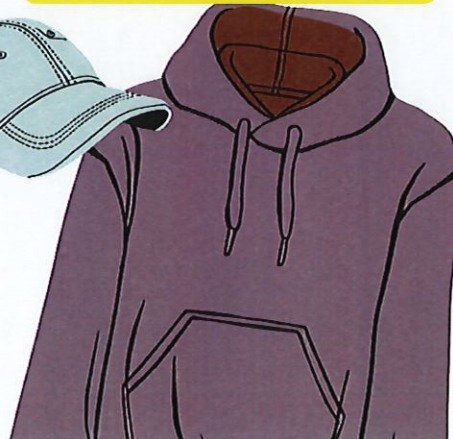
9 am - 12 pm

We are collecting:

- ❖ Clean Clothing (All ages and sizes)
- ❖ Shoes, Belts, Handbags, Backpacks...
- ❖ Clean Linens (Bedding, Curtains, Towels...)
 - ❖ Hats, Scarves, Gloves...
 - ❖ Stuffed Animals
- ❖ Accepting Hard Toys again! * must be less than 2ft x 2ft in size

Please bring all donations to the school in tightly tied **KITCHEN** garbage sized bags (shoes bagged separately) and we'll take care of the rest!

We will receive money for every pound we collect. All proceeds benefit the students of Estell Manor School HSA.





Coming up events

EGG MY YARD

Friday 4.11 or Friday 4.18

Scan the QR code to sign up



A special visitor
**Thursday
April 17**



SPRING CLOTHING DRIVE

**Saturday
May 3rd**

Donuts
with Grown Ups
Wednesday May 28



Next HSA Meeting

Monday May 5th
7 pm in the Media Room

School Day Reminders

1/2 day 1:30 dismissal Thursday April 17
No School Spring Break April 18-25

Volunteers Needed

**Each event takes effort
and volunteers in
order to make it
successful!**

**Join us!
Help keep the
events going for
your child.**

Scan the QR code to join





ESTELL MANOR HSA PRESENTS

Egg My Yard

Pick a Day

Friday April 11th or Friday April 18th

Current Estell & Weymouth Students

THE ESTELL MANOR HSA WILL HOP ON OVER AND HIDE EGGS WITH INDIVIDUALLY WRAPPED CANDY IN YOUR YARD FOR YOUR CHILDREN TO FIND! GET HOPPING AND DON'T MISS OUT ON THE FUN!

25 EGGS = \$20 DONATION

50 EGGS = \$30 DONATION

75 EGGS = \$40 DONATION

100 EGGS = \$50 DONATION

WE CAN ALSO FILL THE EGGS AND DELIVER FOR YOU TO HIDE WHEN IT IS CONVENIENT FOR YOUR FAMILY.

FIND THE LINK TO SIGN UP IN YOUR EMAIL OR ON OUR FACEBOOK PAGE @ ESTELL MANOR HSA

Request Deadline: April 9, 2025

Payment must be made by April 9

QUESTIONS?

EMAIL US AT HSA@ESTELLMANORSCHOOL.COM

FOR SCHOOLS AND PARENTS: K-12 IMMUNIZATION REQUIREMENTS



NJ Department of Health (NJDOH) Vaccine Preventable Disease Program

Summary of NJ School Immunization Requirements

Listed in the chart below are the minimum required number of doses your child must have to attend a NJ school. * This is strictly a summary document. Exceptions to these requirements (i.e. provisional admission, grace periods, and exemptions) are specified in the Immunization of Pupils in School rules, New Jersey Administrative Code (N.J.A.C. 8:57-4). Please reference the administrative rules for more details https://www.nj.gov/health/ed/imm_requirements/acode/. Additional vaccines are recommended by Advisory Committee on Immunization Practices (ACIP) for optimal protection. For the complete ACIP Recommended Immunization Schedule, please visit <http://www.cdc.gov/vaccines/schedules/index.html>.

Grade/level child enters school:	Minimum Number of Doses for Each Vaccine						
	DTaP Diphtheria, Tetanus, acellular Pertussis	Polio Inactivated Polio Vaccine (IPV)	MMR (Measles, Mumps, Rubella)	Varicella (Chickenpox)	Hepatitis B	Meningococcal	Tdap (Tetanus, diphtheria, acellular pertussis)
Kindergarten – 1 st grade	A total of 4 doses with one of these doses on or after the 4 th birthday <u>OR</u> any 5 doses [†]	A total of 3 doses with one of these doses given on or after the 4 th birthday <u>OR</u> any 4 doses [‡]	2 doses [§]	1 dose	3 doses	None	None
2 nd – 5 th grade	3 doses <i>NOTE: Children 7 years of age and older, who have not been previously vaccinated with the primary DTaP series, should receive 3 doses of Td. For use of Tdap, see footnote.[†]</i>	3 doses	2 doses	1 dose	3 doses	None	See footnote [†]
6 th grade and higher	3 doses	3 doses	2 doses	1 dose	3 doses	1 dose required for children born on or after 1/1/97 given no earlier than ten years of age [¶]	1 dose required for children born on or after 1/1/97 [¶]

* Children who did not received any vaccines would need at least one dose of each required vaccine to enter school provisionally.

[†]DTaP: Children who previously attended child care/preschool should have received 4 doses since the requirement to receive the fourth birthday booster dose (5th dose) does not apply until they attend Kindergarten. However, if one of these 4 doses was given on or after the 4th birthday, an additional dose is not needed for Kindergarten. Alternatively, any 5 doses are acceptable.

Children seven years and older who are not fully immunized with DTaP vaccine should have a history of receiving at least three doses of DTaP, Td, and/or Tdap or should use the CDC Catch-Up schedule to get caught up. Tdap given at ages 10 and older can count towards the sixth-grade school requirement. For CDC schedules and catch-up guidance, visit <https://www.cdc.gov/vaccines/schedules/hcp/imz/catchup.html>.

[†]Polio: Children who previously attended child care/preschool should have 3 doses since the requirement to receive the fourth birthday booster dose (4th dose) does not apply until they attend Kindergarten. However, if one of these 3 doses was given on or after the 4th birthday, no additional doses are needed for Kindergarten. Alternatively, any 4 doses are acceptable.

[§]MMR: Children are required to receive two doses of measles, one dose of mumps, and one dose of rubella once they enter Kindergarten. Since single antigen (separate components of the vaccine) is not readily available, most children will have two MMR vaccines.

The Antibody Titer Law (Holly's Law, N.J.S.A. 26:2N-8-1.1), passed on January 14, 2004, requires the New Jersey Department of Health (NJDOH) to accept serologic evidence of protective immunity to measles, mumps and rubella in lieu of the second ACIP recommended measles, mumps and rubella vaccine. For more information, please visit http://nj.gov/health/cd/documents/antibody_titer_law.pdf.

[†]Varicella vaccine is only required for children born on or after January 1, 1998. Children who previously had chickenpox do not need to receive the varicella vaccine as long as a parent/guardian can provide the school with one of the following: 1) Documented laboratory evidence showing immunity (protection) from chickenpox, 2) A physician's written statement that the child previously had chickenpox, or 3) A parent's written statement that the child previously had chickenpox.

[†]Meningococcal and Tdap vaccines are required for all entering 6th graders who are 11 years of age or older. If in 6th grade and under age 11, children must receive the vaccines within 2 weeks of their 11th birthday. Meningococcal (MenACWY) vaccines administered at age 10 or older will be accepted for NJ school attendance. As of the 2020-2021 school year, children who receive a Tdap before age 10 would need to receive an additional dose to meet NJ's immunization requirements for sixth grade and higher. Note, ACIP no longer recommends a minimum interval between a dose of Tdap and a tetanus-diphtheria-containing vaccine, however, current rule [N.J.A.C. 8:57-4.10(i)] states a minimum of five years must have elapsed from the last tetanus-and diphtheria-containing dose.

NOTE: NJ also accepts valid medical and religious exemptions (reasons for not showing proof of immunizations) as per the NJ Immunization of Pupils in School regulations, (N.J.A.C. 8:57-4). Children without proof of immunity as defined by ACIP, including those with medical and religious exemptions, may be excluded from a school, preschool, or child care facility during a vaccine preventable disease outbreak or threatened outbreak as determined by the Commissioner, Department of Health or his or her designee. In addition, anybody having control of a school may, on account of the prevalence of any communicable disease, or to prevent the spread of communicable disease, prohibit the attendance of any teacher or pupil of any school under their control and specify the time during which the teacher or scholar shall remain away from school. The Department of Health shall provide guidance to the school of the appropriateness of any such prohibition.

This document is meant to be a quick resource. For more information "NJ Immunization Requirements Frequently Asked Questions", please visit https://nj.gov/health/cd/imm_requirements/.

ESTELL MANOR
SCHOOL

KINDERGARTEN



**2025-26 Online
Registration is now
open!**

Must be 5 years old on or before
October 1, 2025



Estell Manor School

Preschool Enrollment 2025-26

ONLINE
REGISTRATION
IS NOW

OPEN

ESTELL
MANOR
RESIDENTS
ONLY

MUST BE 3-4
YEARS OLD ON OR
BEFORE
OCTOBER 1, 2025

• • • • •



TEL : 609 476-2267

WWW.ESTELLMANORSCHOOL.COM

ESTELL MANOR SCHOOL **science** **fair**

MAY 29TH
6 PM



SEE DR. SHARPE OR MR. DOONER TO SIGN-UP
DEADLINE TO SUBMIT: APRIL 11TH

April 30th-May 11th, 2025

Atlantic Prevention Resources &
Noyes Art Garage of Stockton
University Present:

*

The Power* of Positivity:

Life Without Limits

This exhibition will feature local student art work inspired by the way positive actions, attitudes, and mindsets can create a life without limits. Works will depict fun, exciting, and fulfilling activities that don't involve drugs or alcohol.

Art

Live Music

Refreshments

Reception:

May 10, 2025

1:00 - 3:00

Free Entry



GREATER
ATLANTIC
PARTNERSHIP



ATLANTIC
PREVENTION RESOURCES



*

Noyes Arts Garage of Stockton University
2200 Fairmount Avenue, Atlantic City, NJ 08401

*

The Power * of Positivity:

Life Without Limits

About the Contest:

This is your chance to showcase the power of positive actions, attitudes, and mindsets in creating a life without limits! We want to see your artwork inspired by how living positively can lead to fun, exciting, and fulfilling experiences — all without use of drugs or alcohol.

What to Submit:

Create a piece of art (2D up to 11x14) that captures positive, empowering, and limitless activities, like pursuing hobbies, building relationships, overcoming challenges, or achieving dreams. Your artwork should convey a sense of excitement, joy, and fulfillment without the need for harmful substances.

Art Exhibit:

Students will be featured in an art exhibit at **The Noyes Arts Garage of Stockton University from April 30th-May 11th, 2025** where their work will be displayed for everyone to admire and appreciate. A reception will be held May 10th to celebrate the students art.

Eligibility:

Open to all Atlantic County students

Grade levels: 6-8

Artwork must be original and reflect the theme of positivity.

Submission Deadline:

Please submit all works by **April 7, 2025**

* Top 3 winners will receive a gift card.

* **First place will have their artwork displayed on a billboard in the local community!**

For More Information: Contact Brooke Mauriello at bmauriello@atlprev.org



GREATER
ATLANTIC
PARTNERSHIP



ATLANTIC
PREVENTION RESOURCES

