



South Whidbey School District

Design Steering
Committee

Meeting #3



01.24.2024

INTEGRUS

A COLLABORATION OF YGH & INTEGRUS ARCHITECTURE

AGENDA

- **Timeline and Overview**
- **Character**
- **Precedent**
- **Analysis**
- **Restrooms**
- **MS Stair**
- **Next Steps**

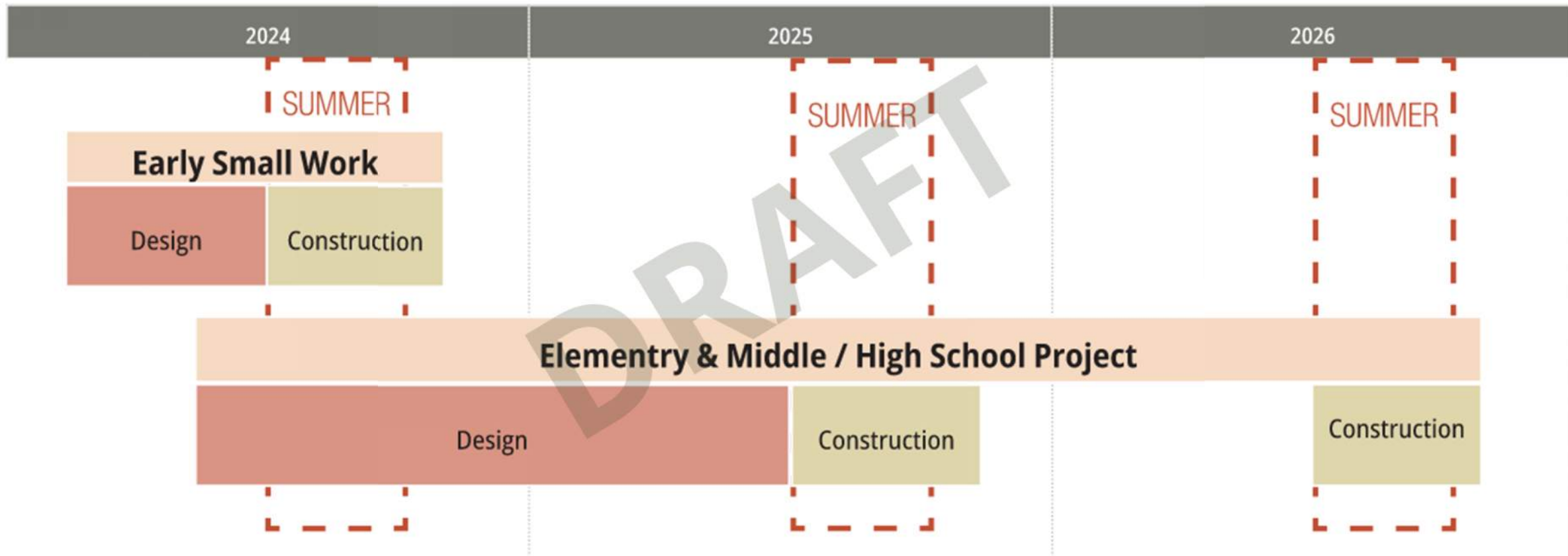


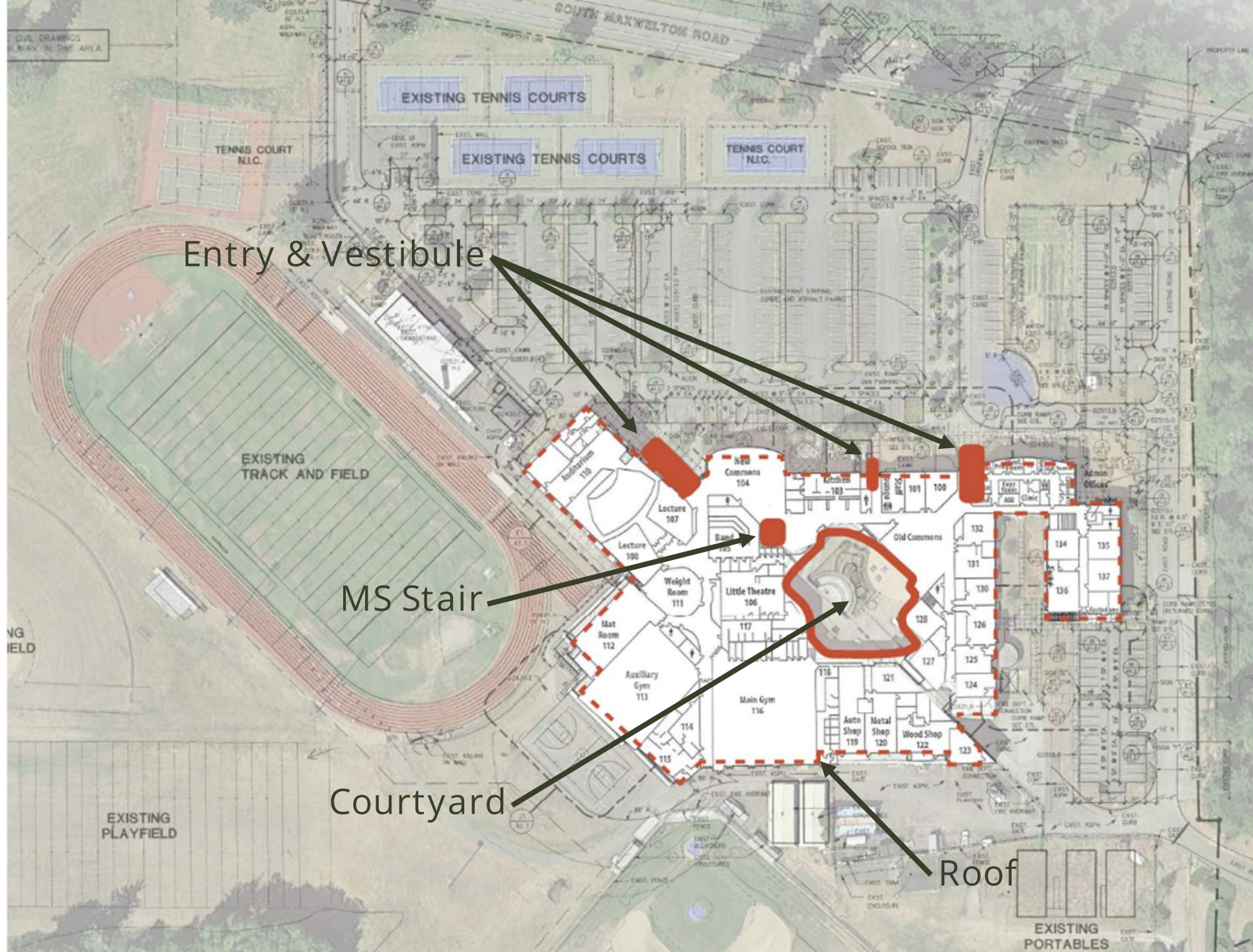
What We Heard

- Middle & High School
 - Covered Defined Entries
 - Improved Outdoor lighting
 - Track and field needs replacement
 - Inclusive restrooms and more privacy in locker rooms are required
 - Accessibility issues at gym bleachers
 - MS stair is hazardous
 - Administration area needs more offices & conference rooms
 - Dedicated Life skills toilet
- Elementary School
 - 'overcrowded' feeling
 - Secure vestibule at Main office
 - Gym used for lunch, PE at S. Campus
 - Need an accessible & inclusive playground
 - Improvements to Vehicle traffic flow
 - Accessible & Inclusive restrooms
 - Vegetation close to fencing is causing security concerns

TIMELINE & OVERVIEW





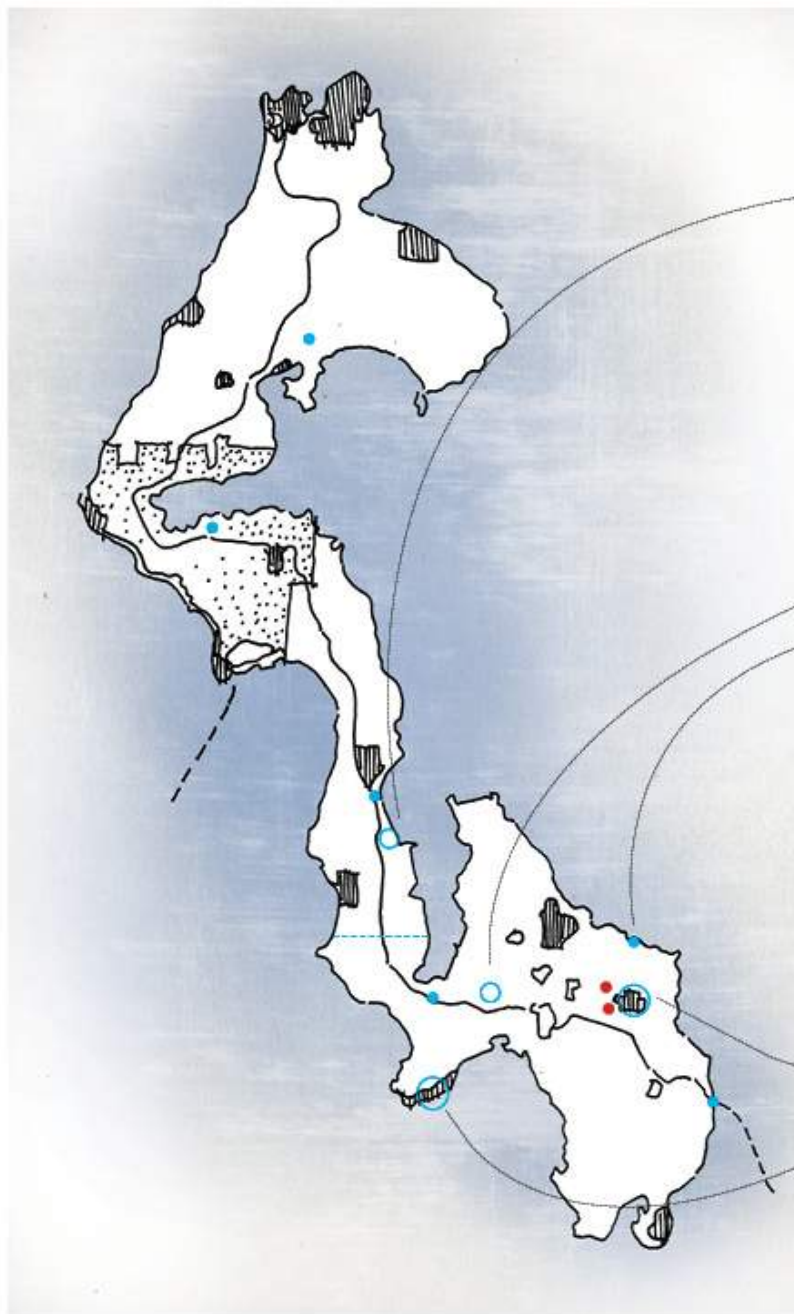


Vestibule

CHARACTER



CONTEXT AND CHARACTER



Rhododendron Gardens



Earth Sanctuary



Historic Towns



South Whidbey
Community Park

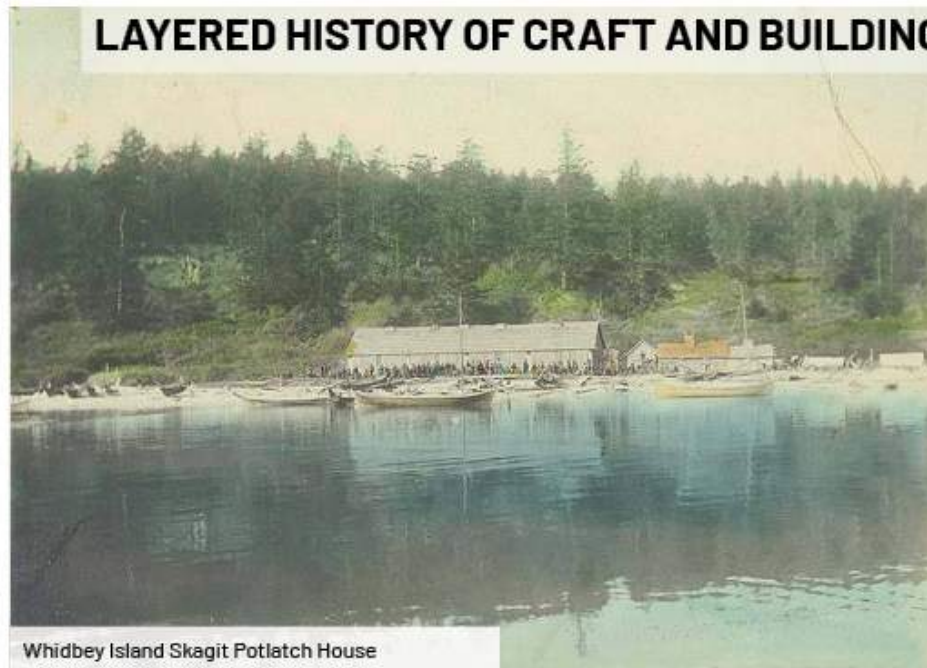


Double Bluff Beach



Chief William Shelton Carving a Story Pole

LAYERED HISTORY OF CRAFT AND BUILDING



Whidbey Island Skagit Potlatch House



Historic Haller House



Glendale 1923

PRECEDENTS



GUIDING PRINCIPLES

21ST CENTURY LEARNING ENVIRONMENT

Learning happens everywhere.

Modernizations throughout to improve student and community experience, perception, and pride. Re-envisioning existing indoor and outdoor spaces to better serve young learners and expanding usable outdoor space.



WELCOMING & IDENTITY

Create a welcoming identity.

Refresh school appearance, articulate entries, and enhance spaces of pride that invite students and community in for learning and gathering. Create distinct identities for the middle school and high school under one roof.



INCLUSIVE ENVIRONMENTS

All environments are inclusive.

Improve ADA compliance and access to inclusive restrooms to support all students. Add inclusive and covered play areas to provide a vibrant and engaging outdoor experience for all and to support athletics and community use.



CLASSROOMS FOR TODAY'S LEARNING

Set the stage for quality learning.

Update classrooms to improve student learning experience and integrate the latest technology. Creating classrooms that are age appropriate and supportive of multi-modal learning to enhance success of all our learners.



WAYFINDING & SAFETY

Navigating safely & with ease.

Improve flow outside and inside the schools and enhance safety at entrances and perimeters for a better student and community experience during and after school hours.



OPERATIONS & MAINTENANCE

Go clean and green.

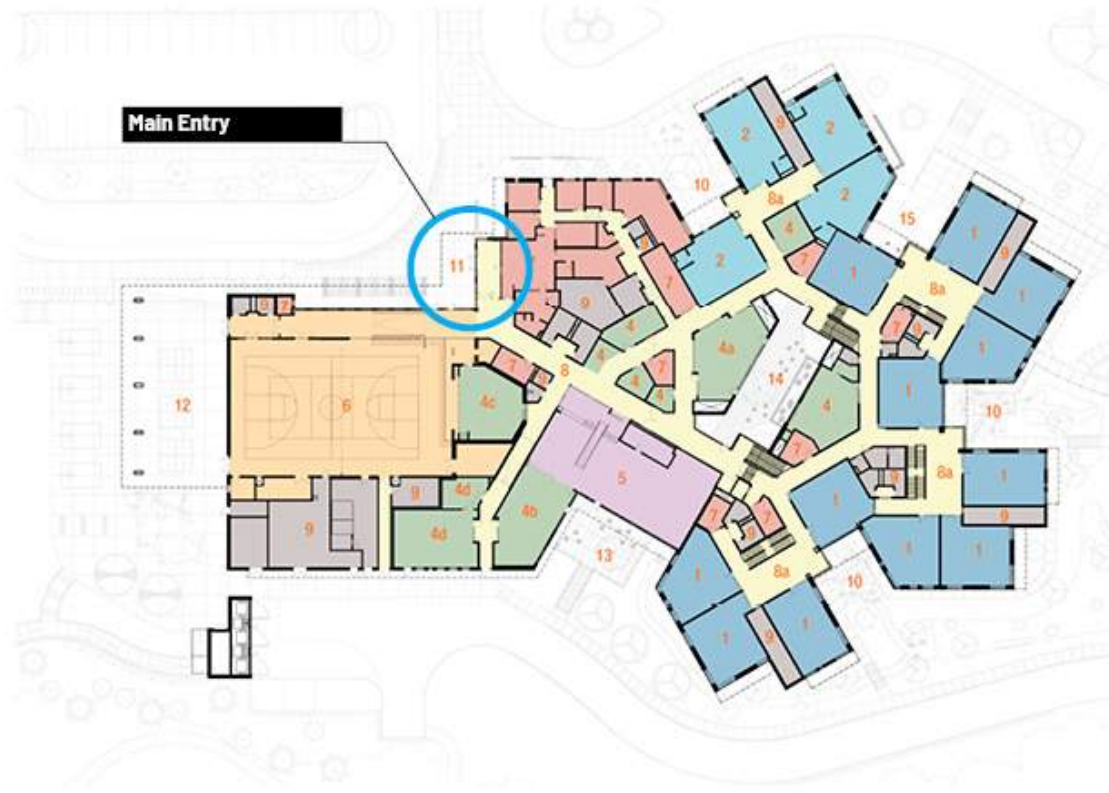
Upgrade mechanical and electrical infrastructure for reduced environmental impact, improve performance, reduce maintenance costs, and increase student comfort and wellness.



CLYDE HILL ELEMENTARY SCHOOL

Clyde Hill, WA





CLYDE HILL ELEMENTARY SCHOOL
Clyde Hill, WA



CLYDE HILL ELEMENTARY SCHOOL

Clyde Hill, WA

1. COVERED CANOPIES

Generous overhead canopies provide shelter from the elements and become natural gathering spaces.

2. TRANSPARENCY

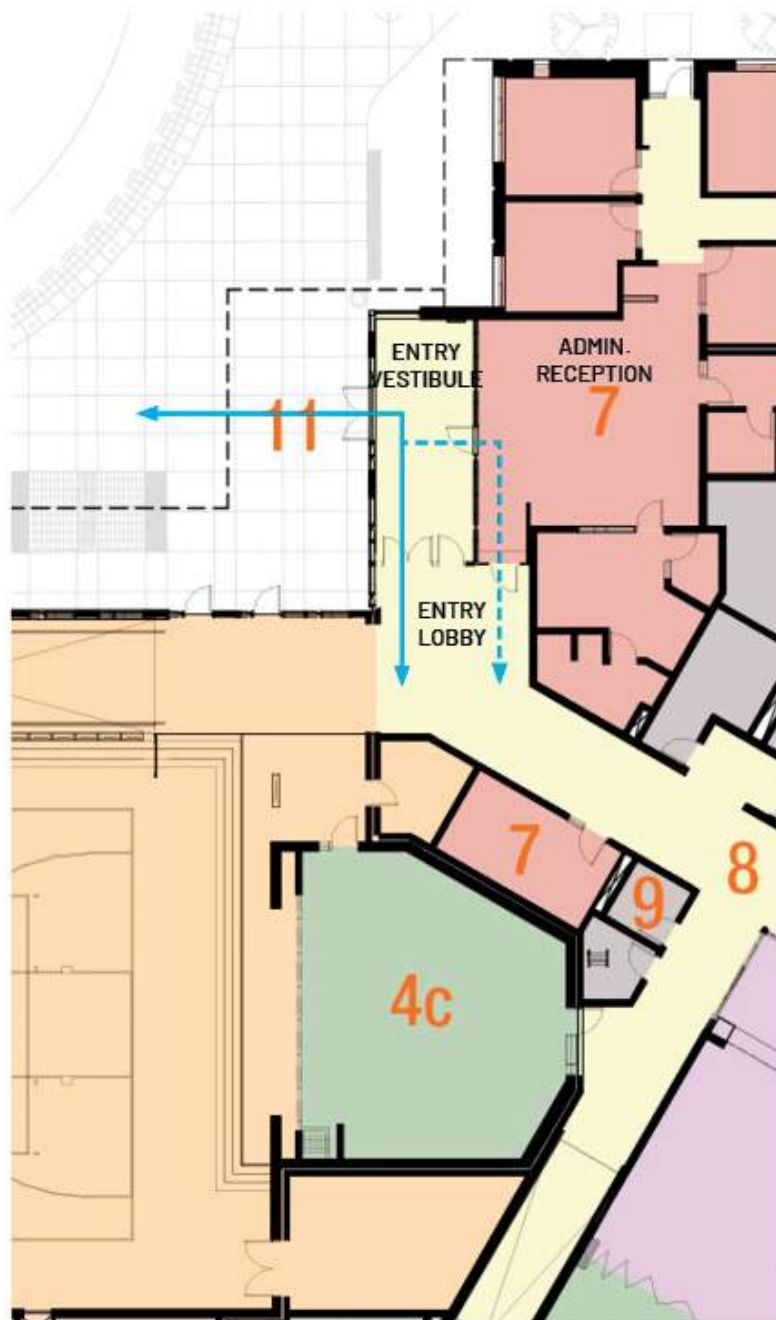
Transparency into and out from the entry and Admin reception creates an atmosphere of welcoming while improving sight lines and security.

3. MATERIALS

Warm materials differentiate parts of the building and make legible important elements of the school.

4. GATHERING

Hardscape areas for gathering and seating opportunities for students and community to pause.



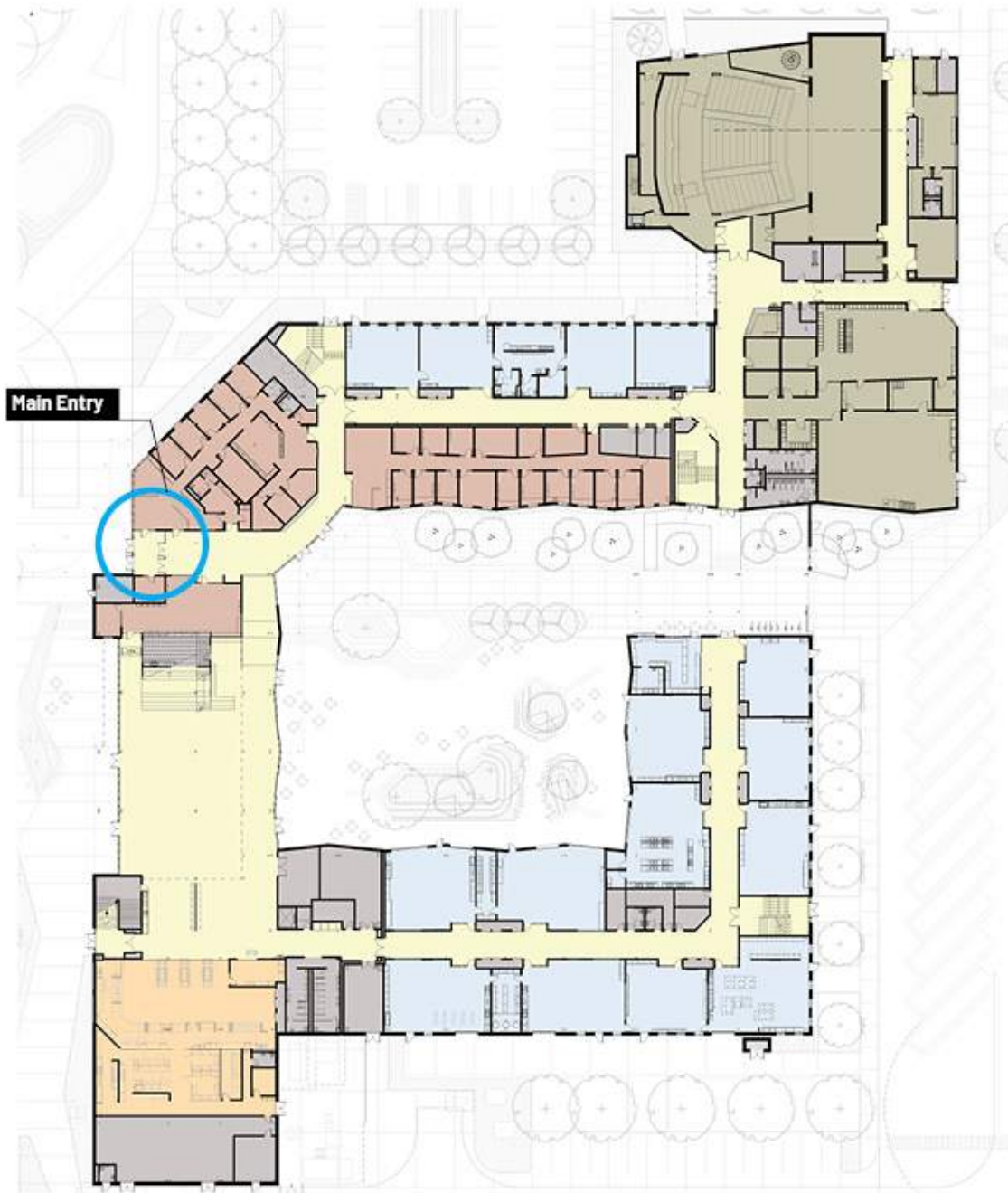
JUANITA HIGH SCHOOL

Kirkland, WA



JUANITA HIGH SCHOOL
Kirkland, WA

Main Entry



1. COVERED CANOPIES

Generous overhead canopies provide shelter from the elements and become natural gathering spaces.

2. TRANSPARENCY

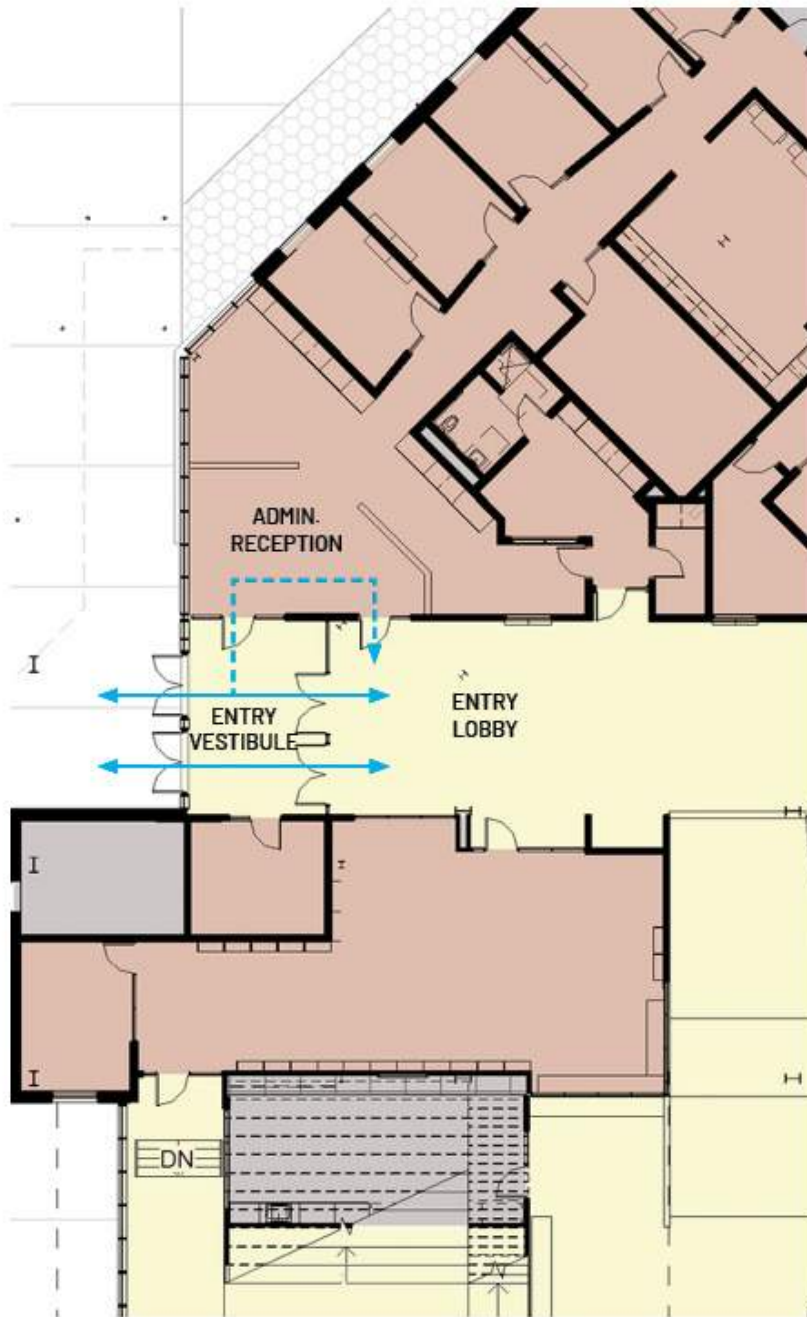
Transparency into and out from the entry and Admin reception creates an atmosphere of welcoming while improving sight lines and security.

3. MATERIALS

Vibrant colors and graphic signage differentiate parts of the building and make legible important elements of the school.

4. GATHERING

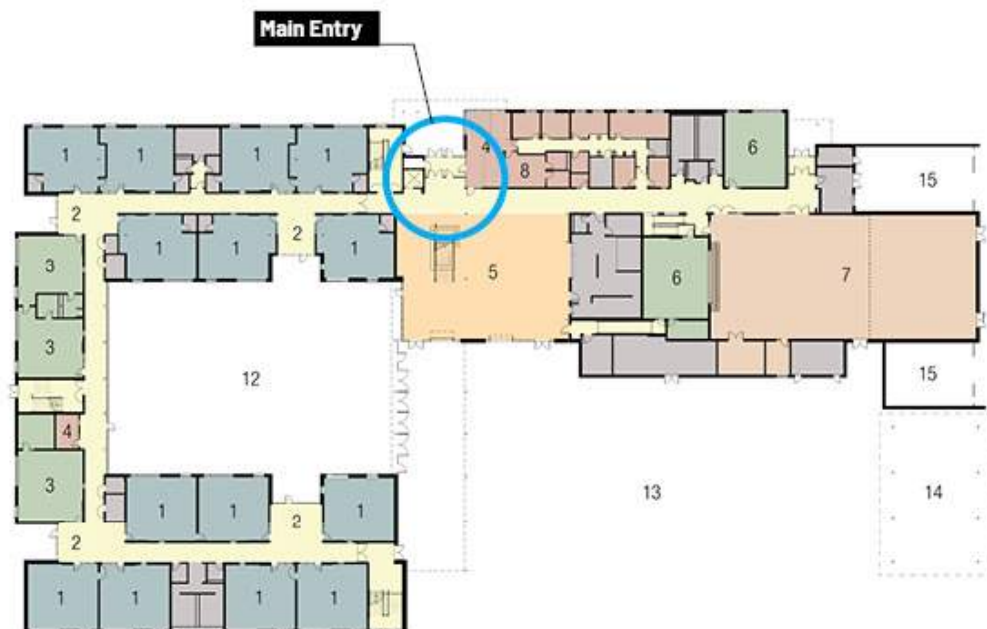
Hardscape areas for gathering and seating opportunities for students and community to pause.



FIFE ELEMENTARY SCHOOL

Fife, WA





1. COVERED CANOPIES

Generous overhead canopies provide shelter from the elements and become natural gathering spaces.

2. TRANSPARENCY

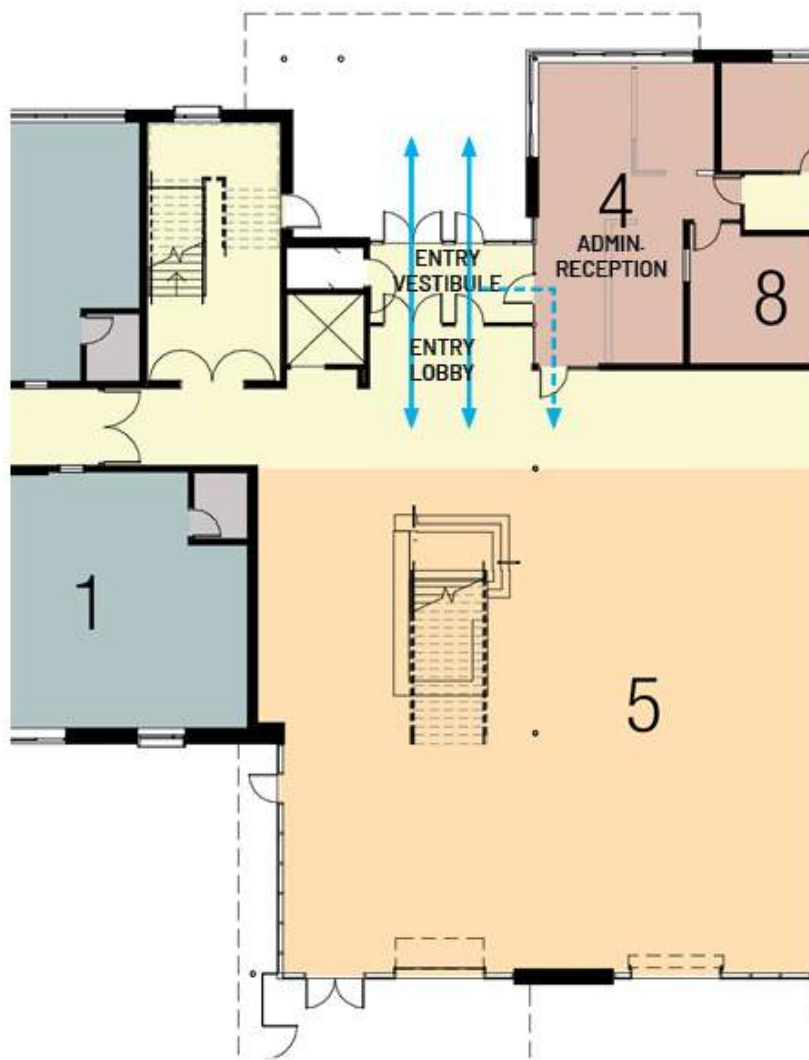
Transparency into and out from the entry and Admin reception creates an atmosphere of welcoming while improving sight lines and security.

3. MATERIALS

Vibrant colors and graphic signage differentiate parts of the building and make legible important elements of the school.

4. GATHERING

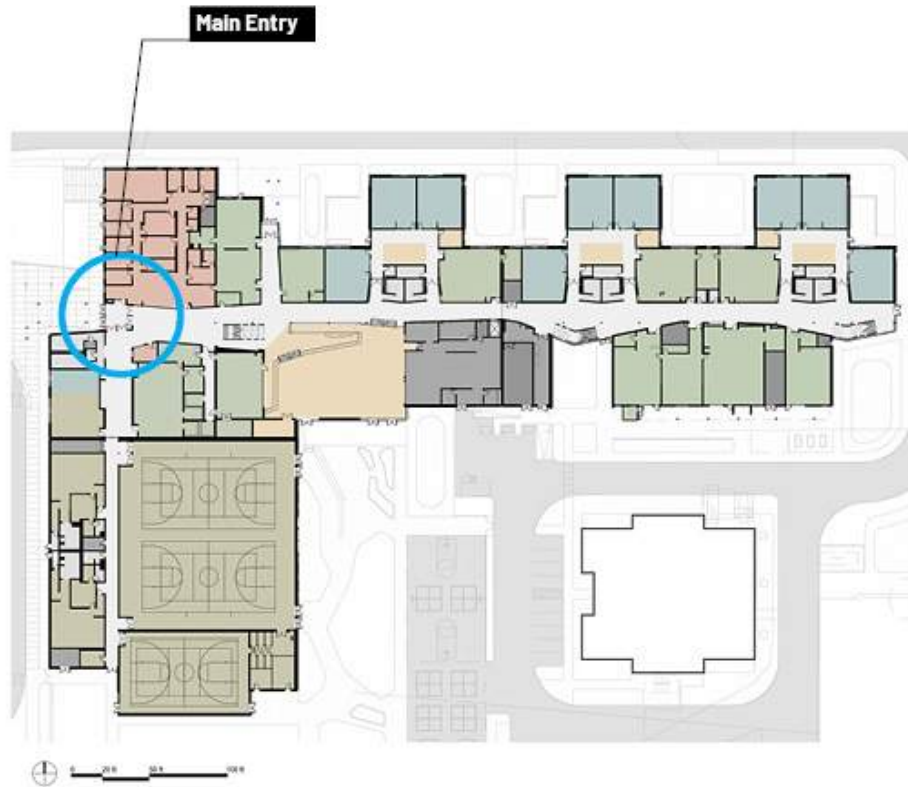
Hardscape areas for gathering and seating opportunities for students and community to pause.



PARK PLACE MIDDLE SCHOOL

Monroe, WA





1. COVERED CANOPIES

Generous overhead canopies provide shelter from the elements and become natural gathering spaces.

2. TRANSPARENCY

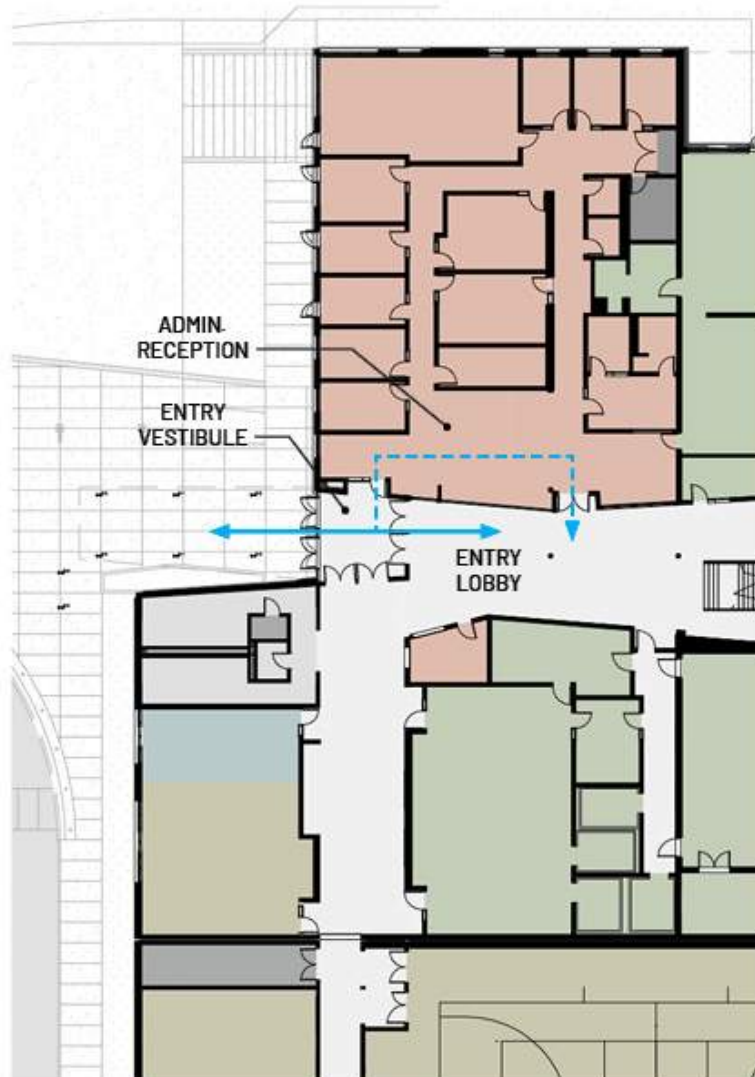
Transparency into and out from the entry and Admin reception creates an atmosphere of welcoming while improving sight lines and security.

3. MATERIALS

Tactile materials with grain relate to the human scale.

4. GATHERING

Hardscape areas for gathering and seating opportunities for students and community to pause.



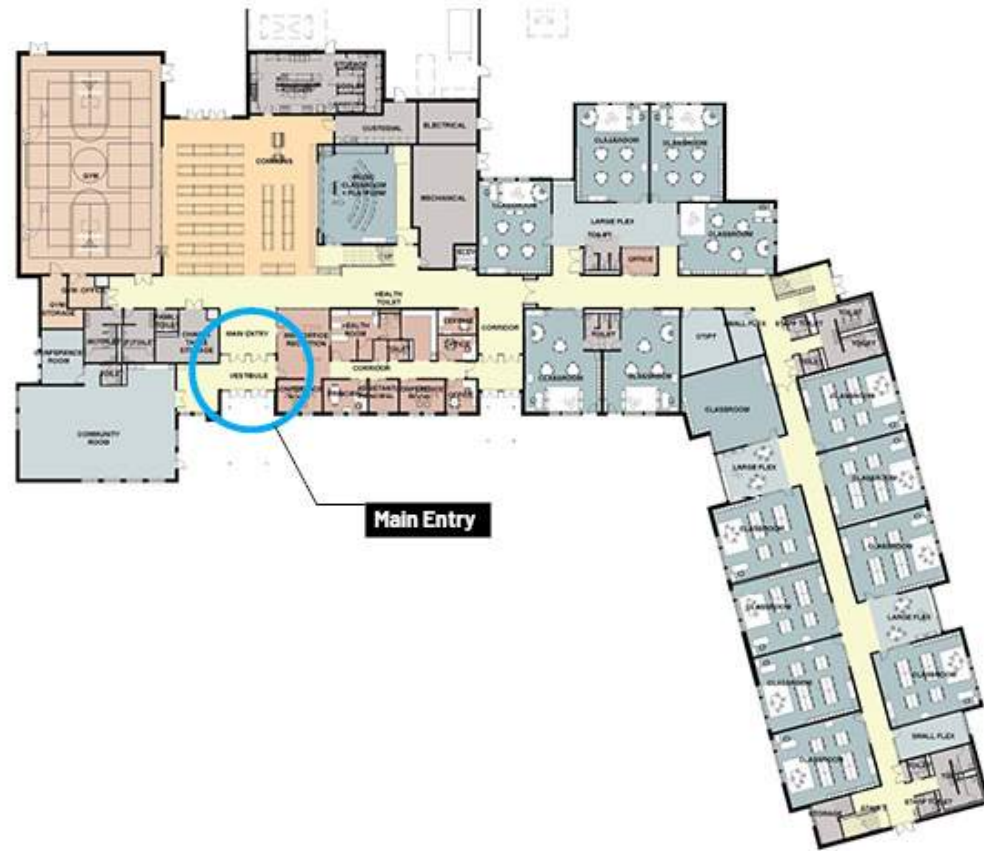
SWIFT WATER ELEMENTARY SCHOOL

Gig Harbor, WA



SWIFT WATER ELEMENTARY SCHOOL

Gig Harbor, WA



1. COVERED CANOPIES

Generous overhead canopies provide shelter from the elements and become natural gathering spaces.

2. TRANSPARENCY

Transparency into and out from the entry and Admin reception creates an atmosphere of welcoming while improving sight lines and security.

3. MATERIALS

Tactile materials with grain relate to the human scale.

4. GATHERING

Hardscape areas for gathering and seating opportunities for students and community to pause.



COURTYARD CHARACTER



COURTYARD CHARACTER

1. GLASS AND TRANSPARENCY / OPERABLE DOORS

2. FIXED SEATING AND TABLES

3. GROUND COVER PLANTING

4. TIERED SEATING

5. IMPROVED LIGHTING

6. PAVING PATTERNS AND MATERIALS



COURTYARD CHARACTER

1. GLASS AND TRANSPARENCY / OPERABLE DOORS

2. FIXED SEATING AND TABLES

3. GROUND COVER PLANTING

4. PAVING PATTERNS AND MATERIALS



COURTYARD CHARACTER

1. GLASS AND TRANSPARENCY / OPERABLE DOORS

2. FIXED SEATING

3. GROUND COVER PLANTING

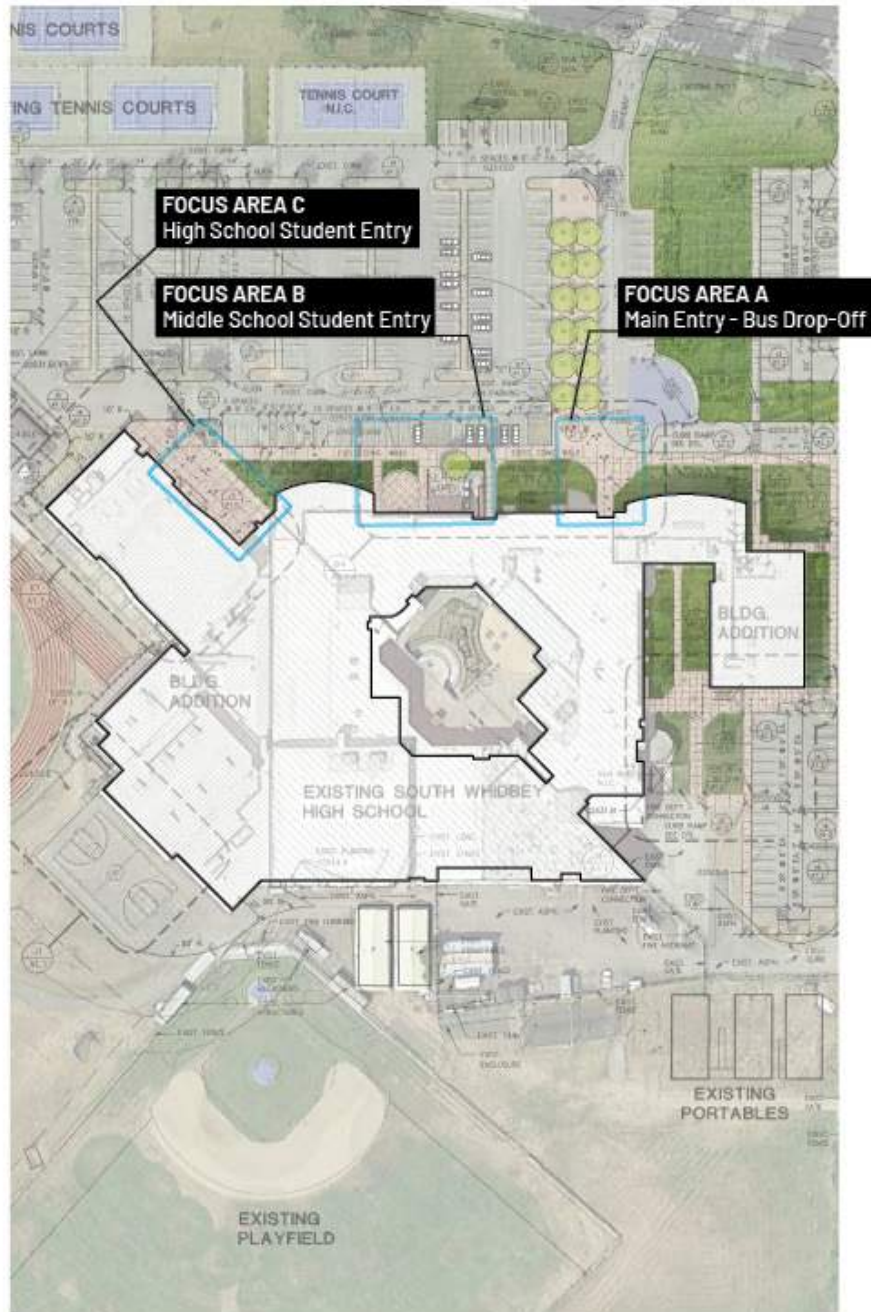
4. PAVING PATTERNS AND MATERIALS

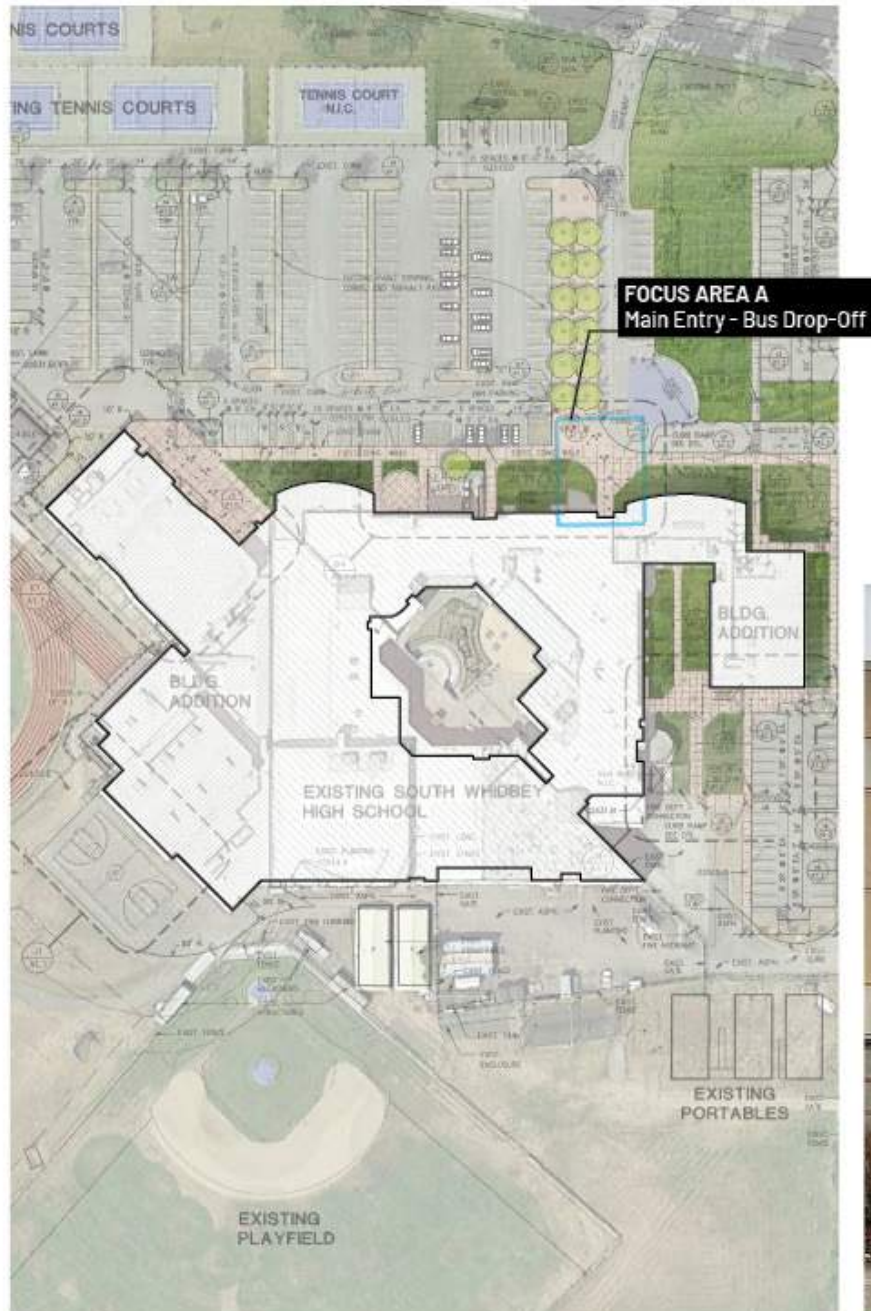


ANALYSIS



MAIN BUILDING ENTRY ANALYSIS





MAIN BUILDING ENTRY ANALYSIS

1. LIMITED TRANSPARENCY FROM ADMIN. AREA
2. SITE WALLS BLOCK ACCESS AND VIEWS
3. LIMITED COVERING OVER DOORS
4. NO MATERIAL DIFFERENTIATION AT ENTRIES





MAIN BUILDING ENTRY ANALYSIS

1. LIMITED TRANSPARENCY FROM ADMIN. AREA
2. SITE WALLS BLOCK ACCESS AND VIEWS
3. CANOPY SIGNALS ARRIVAL
4. NO MATERIAL DIFFERENTIATION AT ENTRIES





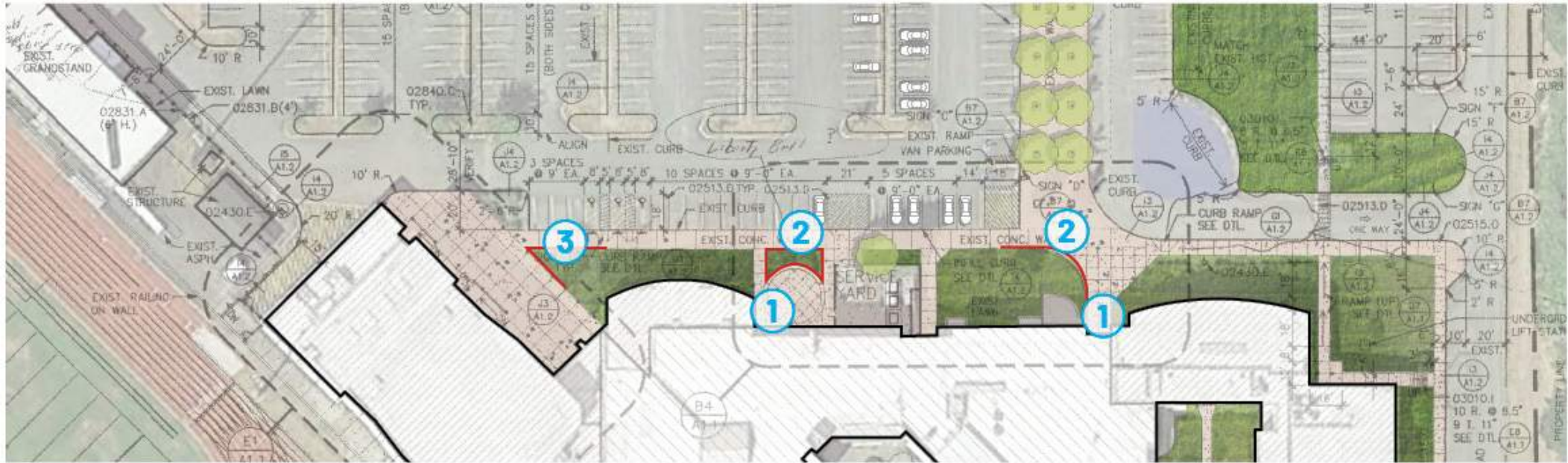
MAIN BUILDING ENTRY ANALYSIS

1. LIMITED TRANSPARENCY
2. LIMITED SEATING
3. COVER OVER DOORS
4. NO MATERIAL DIFFERENTIATION AT ENTRIES



ARRIVAL SEQUENCE ANALYSIS

1. LIMITED TRANSPARENCY AND CANOPIES
2. SITE WALLS BLOCK ACCESS AND VIEWS
3. LANDSCAPING BLOCKS "DESIRE" PATHS



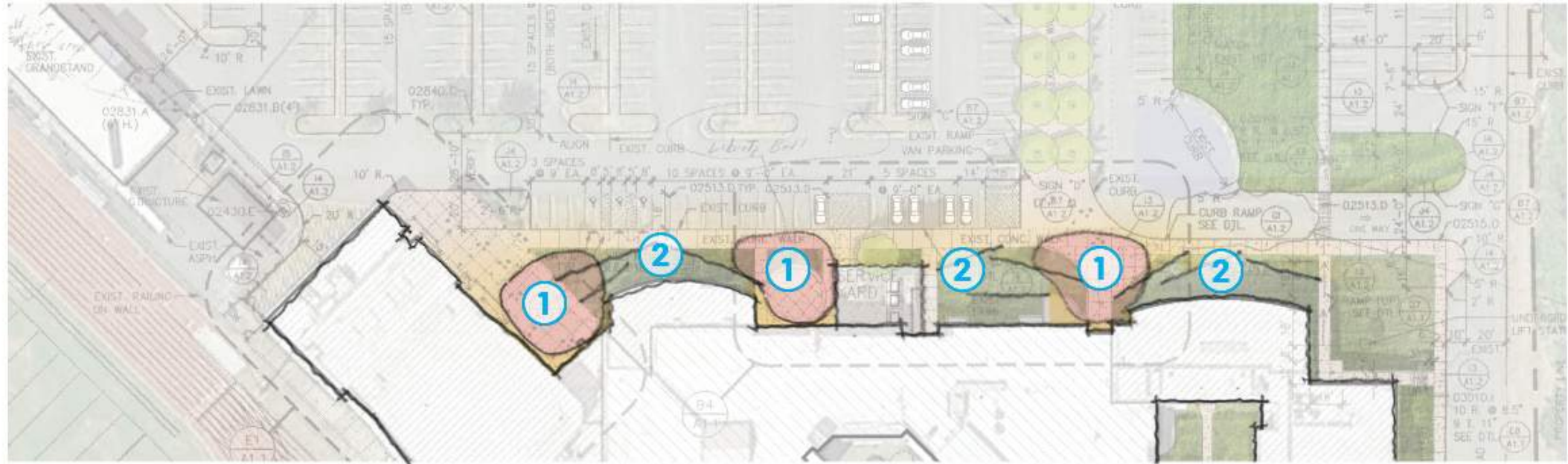
Existing Conditions - Arrival and Departure

1" = 50'-0"



ARRIVAL SEQUENCE ANALYSIS

1. DEFINE THE THREE MAIN ENTRIES WITH CLEAR WAYFINDING, IMPROVED SIGHT LINES, AND SIGNAL ARRIVAL
2. CONSIDER LANDSCAPING FOR MAINTENANCE, VIEWS, AND CHARACTER

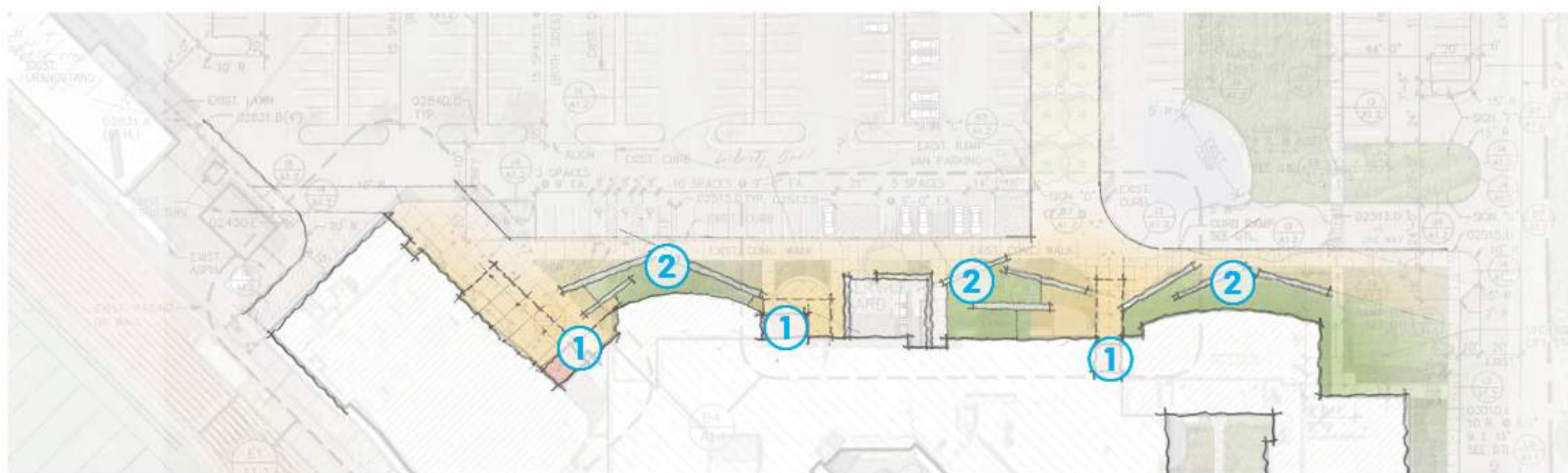


Zones of Transition and Gathering

$$1'' = 50'-0''$$


ARRIVAL SEQUENCE ANALYSIS

1. REVIEW DESIGN PRIORITIES AT ENTRIES
2. CONSIDER LANDSCAPING FOR MAINTENANCE, VIEWS, AND CHARACTER



Entry Design Considerations

 $1'' = 50'-0''$ 

COURTYARD CHARACTER

1. DEMO SITE WALLS, UNUSED STRUCTURES AND LOCKERS
2. CONSIDER LANDSCAPING FOR MAINTENANCE, VIEWS, AND CHARACTER
3. COURTYARD PAVING MATERIALS
4. CONSIDER FIXED SEATING ELEMENTS



INCLUSIVE RESTROOMS



Inclusive Restrooms are about MORE than just Gender...

- No Gender Designation
- Accessible for ALL
- Designed for Complete Privacy
- Safe and Welcoming
- Have things that we think should be associated with a bathroom – amenities, cleanliness, etc.



Attributes

- Safe
- Nondiscriminatory
- Supportive
 - Student physical needs
 - Cultural needs
 - Gender identity



Design Consideration

- Language
 - All-gender or gender inclusive is preferred terminology
- Signage
 - Should be inclusive of all genders
 - Labeled using a pictogram without reference to specific genders (e.g. no binary stick figures.)
- Privacy
 - Sense of privacy is important
 - Provide fully enclosed toilet compartments, full height partitions or “zero-sightline” toilet stalls
- Access
 - All-gender restrooms should be intentional and located off the main path of circulation
 - Recommended that one all-gender restroom be located within one building level of the user



NOTICE: This is now a
unisex restroom.



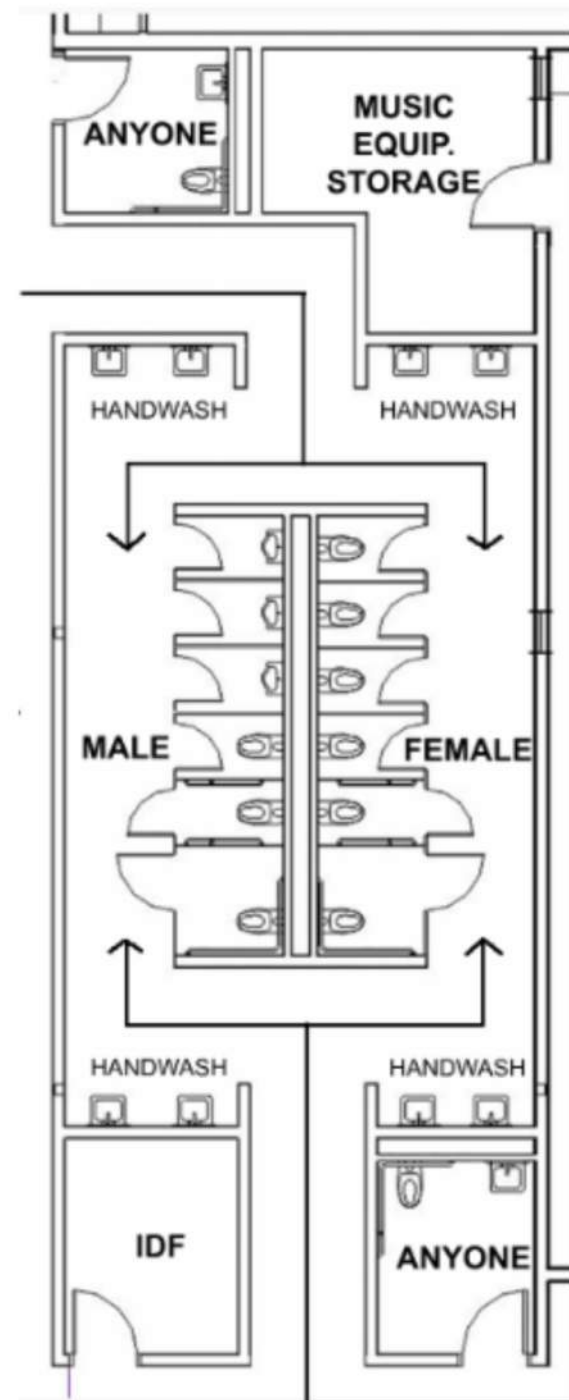
No assumptions, no
stereotypes, no gender roles.
Just toilets.



Future Flexibility

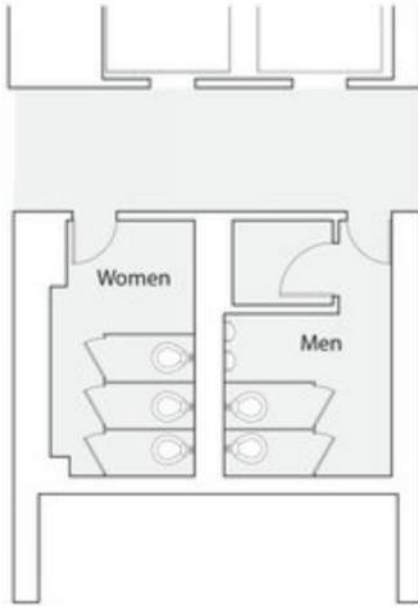
Consider providing (2) entrances/exits into gendered toilet room so that in the future it can easily become an all-gender restroom (right).

An additional benefit to having multiple entrances/exits allows multiple routes of egress to avoid confrontation.



Design Study

Existing



- 7 Standard Fixtures (non-ADA)

Option 1



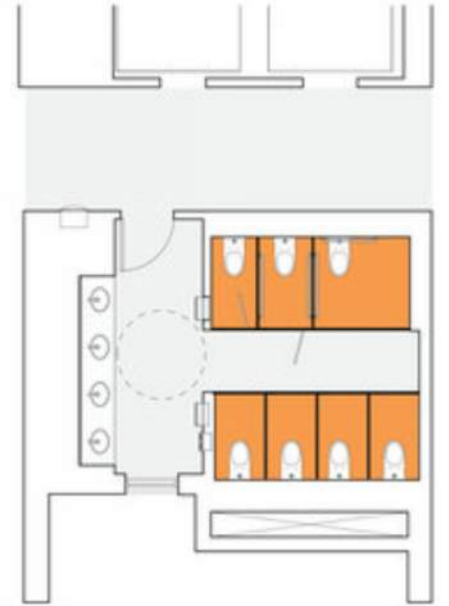
- 2 Standard Fixtures
- 2 ADA Fixtures
- Urinal in a stall

Option 2



- 4 Standard Fixtures
- 1 ADA Fixture / Private
- ADA segregated

Final



- 6 Standard Fixtures / Private
- 1 ADA Fixture / Private
- ADA Integration
- Air flow
- Acoustic / Visual Privacy

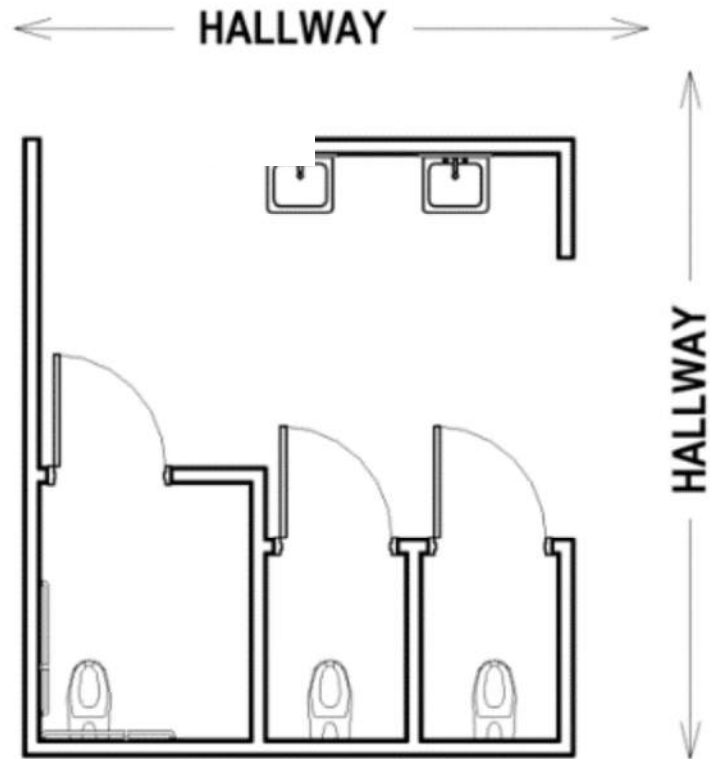
Precedents



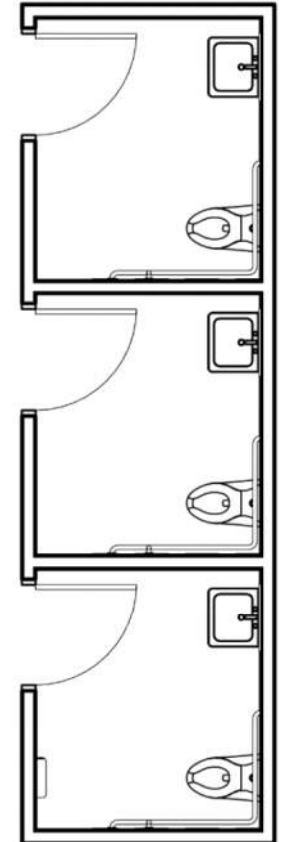
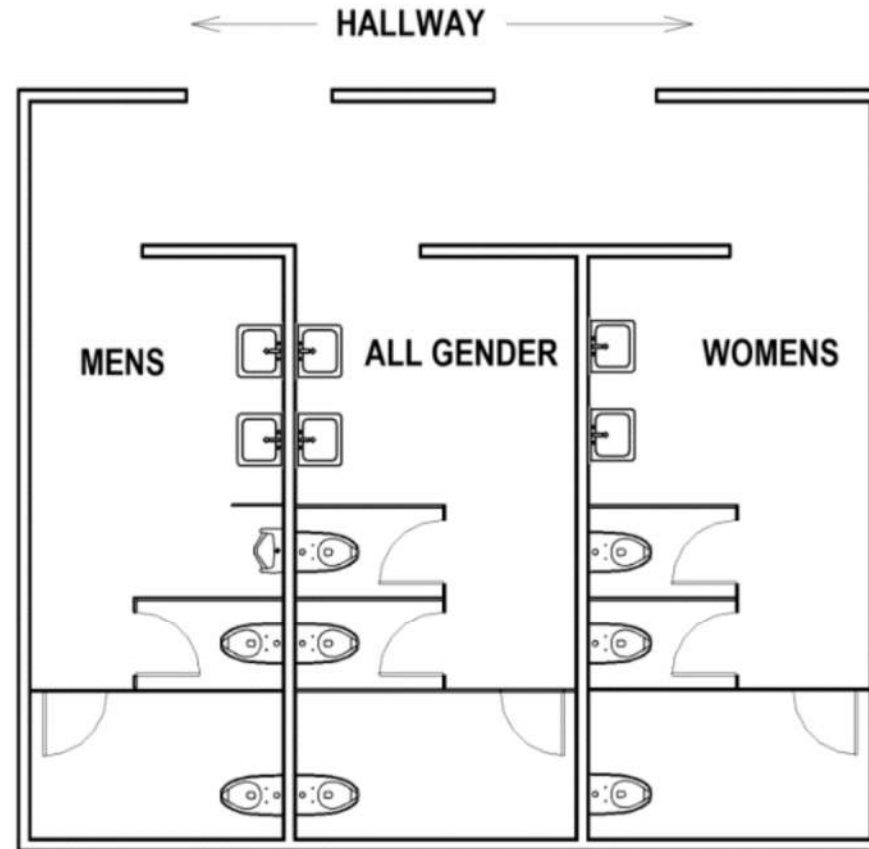
St. Paul Public Schools

Precedents

Schools



Seattle Public Schools



Locker Rooms

- Women's Toilet Room
- Men's Toilet Room
- Faculty & Staff Only Toilet Room



Locker Rooms

- Women's Toilet Room
- Men's Toilet Room
- Faculty & Staff Only Toilet Room



Let's Talk – Tell Me More...

Types of Fixtures

Sightlines

Location

Changing

Grooming

Signage

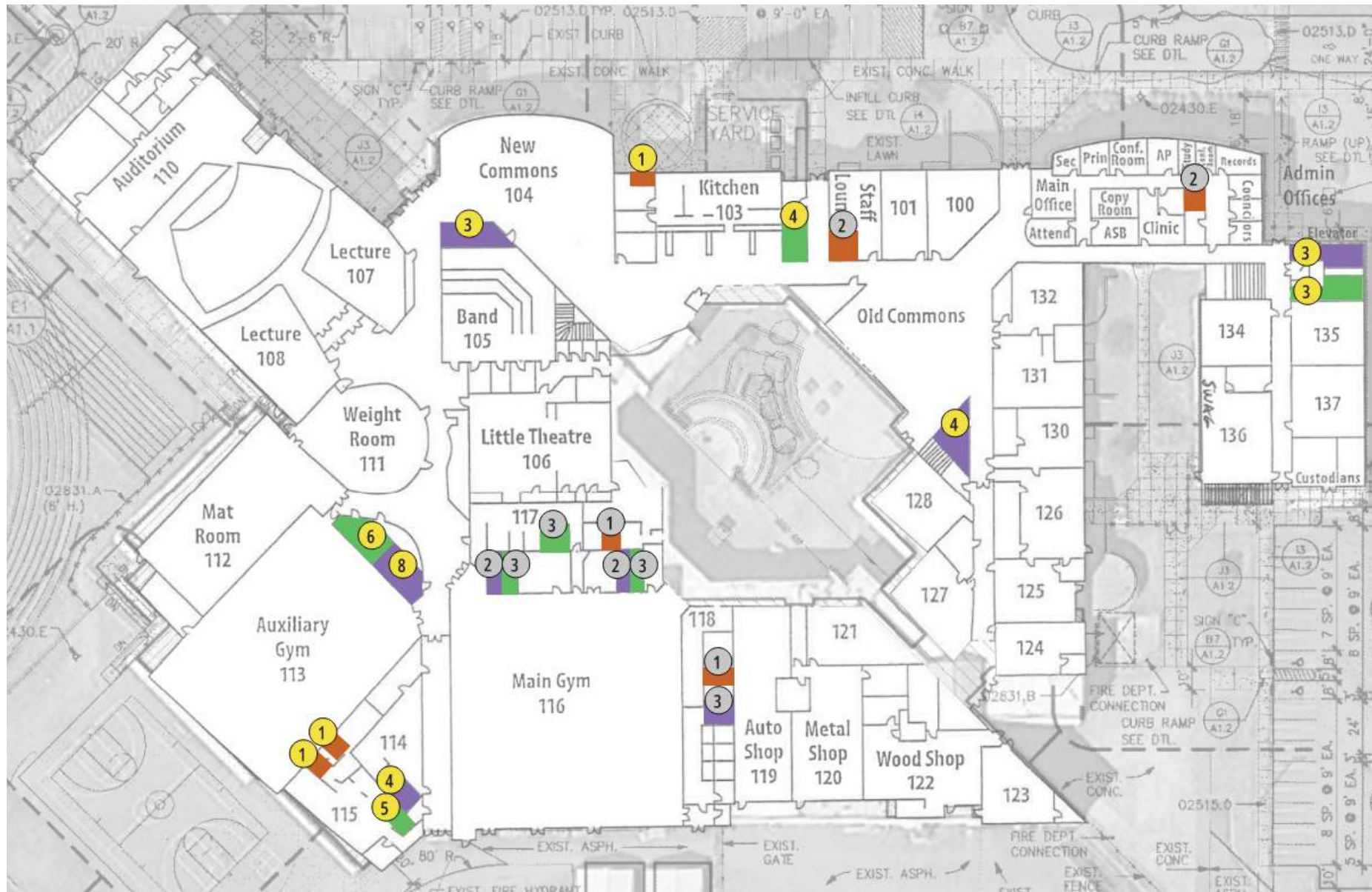
Handwashing

Drinking Fountains

Water bottle fillers



DISTRIBUTION & AVAILABILITY – HS & MS



- Women's Toilet Room
- Men's Toilet Room
- Faculty & Staff Only Toilet Room
- Number of Stalls
- Number of Stalls (ADA Stall Available)

- **Staff Only Restroom**
 - 5 single occupant restrooms. All located within another room, not accessible from hallway
 - 4 Non-ADA, 1 ADA
 - 2 male locker/shower
 - 1 non-ADA stall
 - 1 ADA stall
 - 2 female locker/shower
 - 1 non-ADA stall
 - 1 ADA stall
- **Student and Staff Restroom**
 - 5 male group restrooms
 - 6 non-ADA stalls
 - 4 ADA stalls
 - 10 urinals
 - 5 female group restroom
 - 18 non-ADA stalls
 - 4 ADA stalls
 - 2 male locker/shower
 - 2 non-ADA stall
 - 1 ADA stall
 - 5 urinals
 - Unenclosed showers
 - 2 female locker/shower
 - 6 non-ADA stall
 - 1 ADA stall
 - Unenclosed showers

LEVEL 1

DISTRIBUTION & AVAILABILITY – HS & MS



- Women's Toilet Room
- Men's Toilet Room
- Faculty & Staff Only Toilet Room
- Number of Stalls
- Number of Stalls (ADA Stall Available)

- **Student and Staff Restroom**
 - 2 male group restrooms
 - 2 non-ADA stalls
 - 2 ADA stalls
 - 4 urinals
 - 2 female group restroom
 - 5 non-ADA stalls
 - 2 ADA stalls

LEVEL 2

DISTRIBUTION & AVAILABILITY – ES

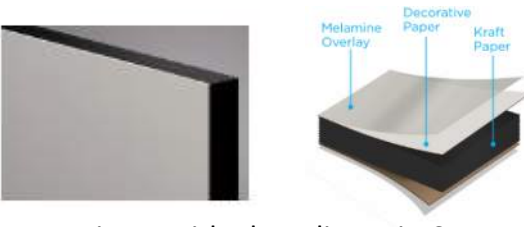


- Women's Toilet Room
- Men's Toilet Room
- Faculty & Staff Only Toilet Room
- Number of Stalls
- Number of Stalls (ADA Stall Available)

- **Staff Only Restroom**
 - 3 single occupant restrooms. All located within another room, not accessible from hallway
 - 2 Non-ADA, 1 ADA
- **Student and Staff Restroom**
 - 5 male group restrooms
 - 6 non-ADA stalls
 - 2 ADA stalls
 - 10 urinals
 - 5 female group restroom
 - 16 non-ADA stalls
 - 2 ADA stalls

#1 – Update

- Material

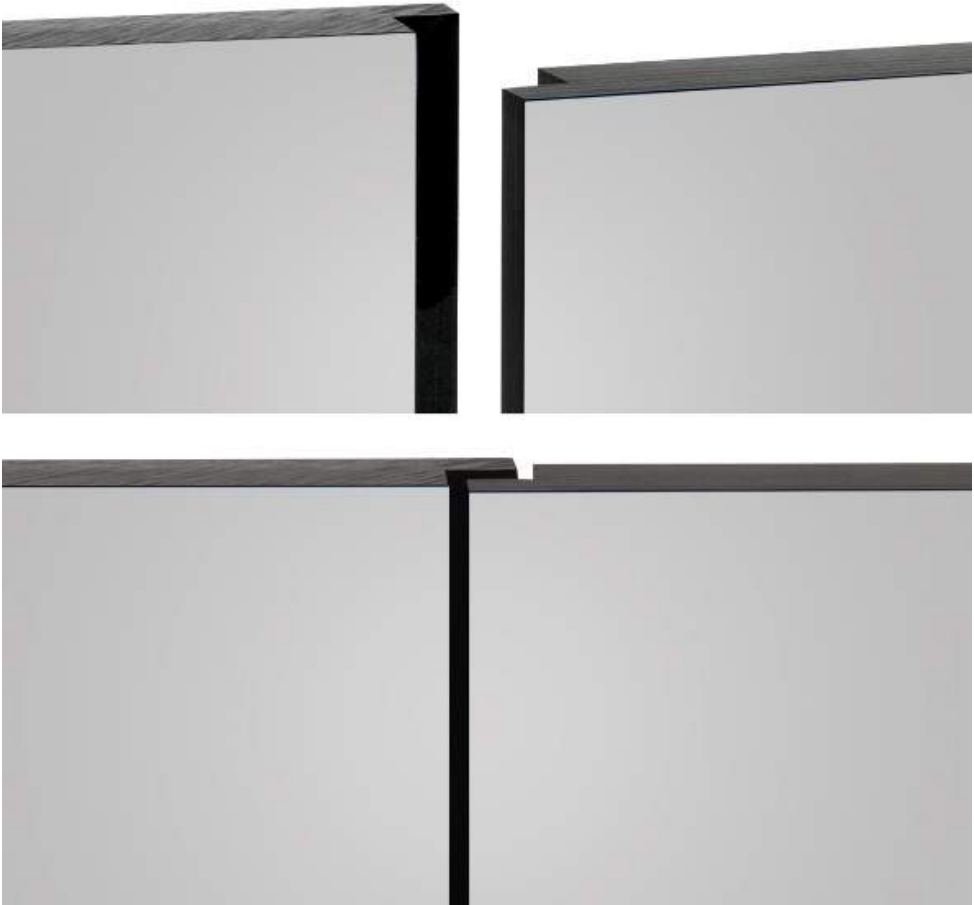


Laminate with Phenolic Resin Core

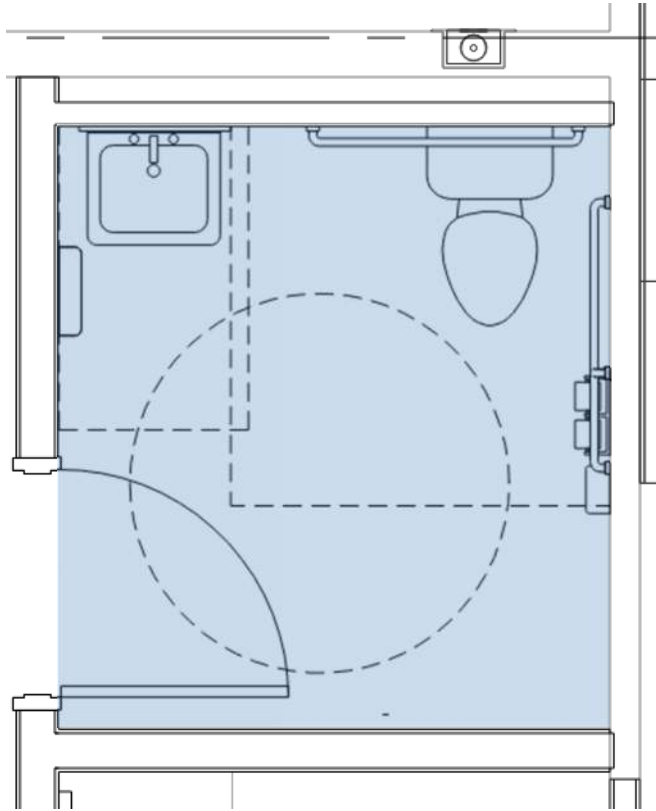


Plastic HDPE

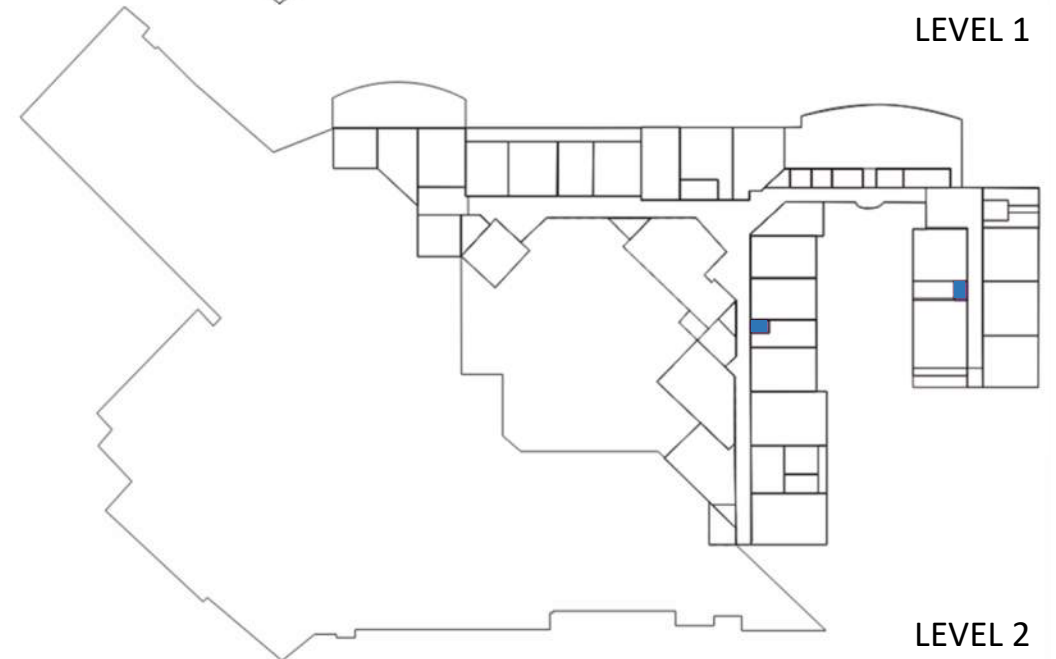
- Increase Privacy



#2 – Add Single Occupant Restroom

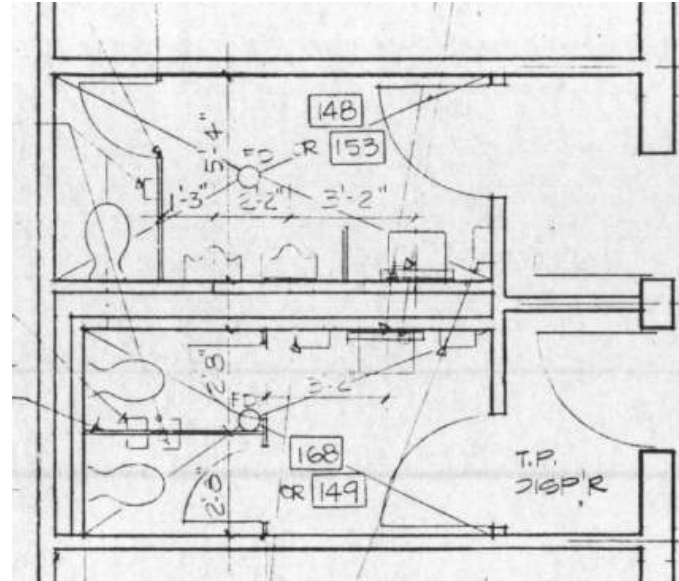
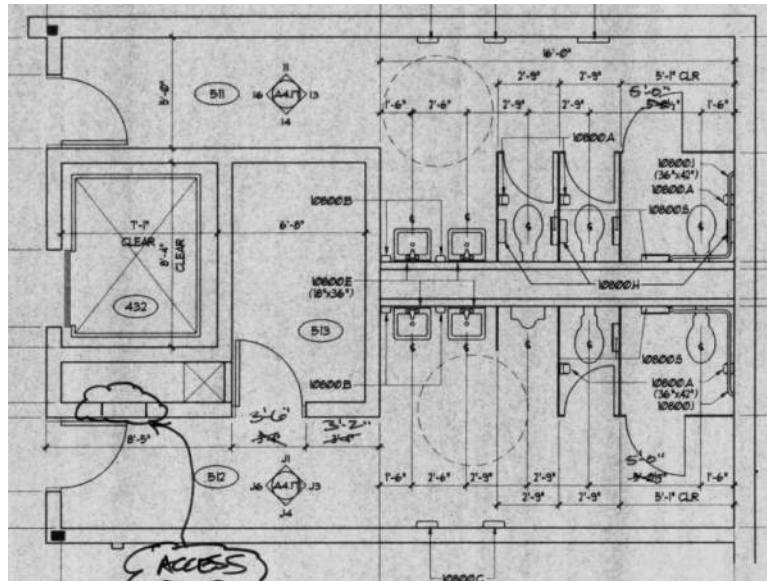


LEVEL 1



LEVEL 2

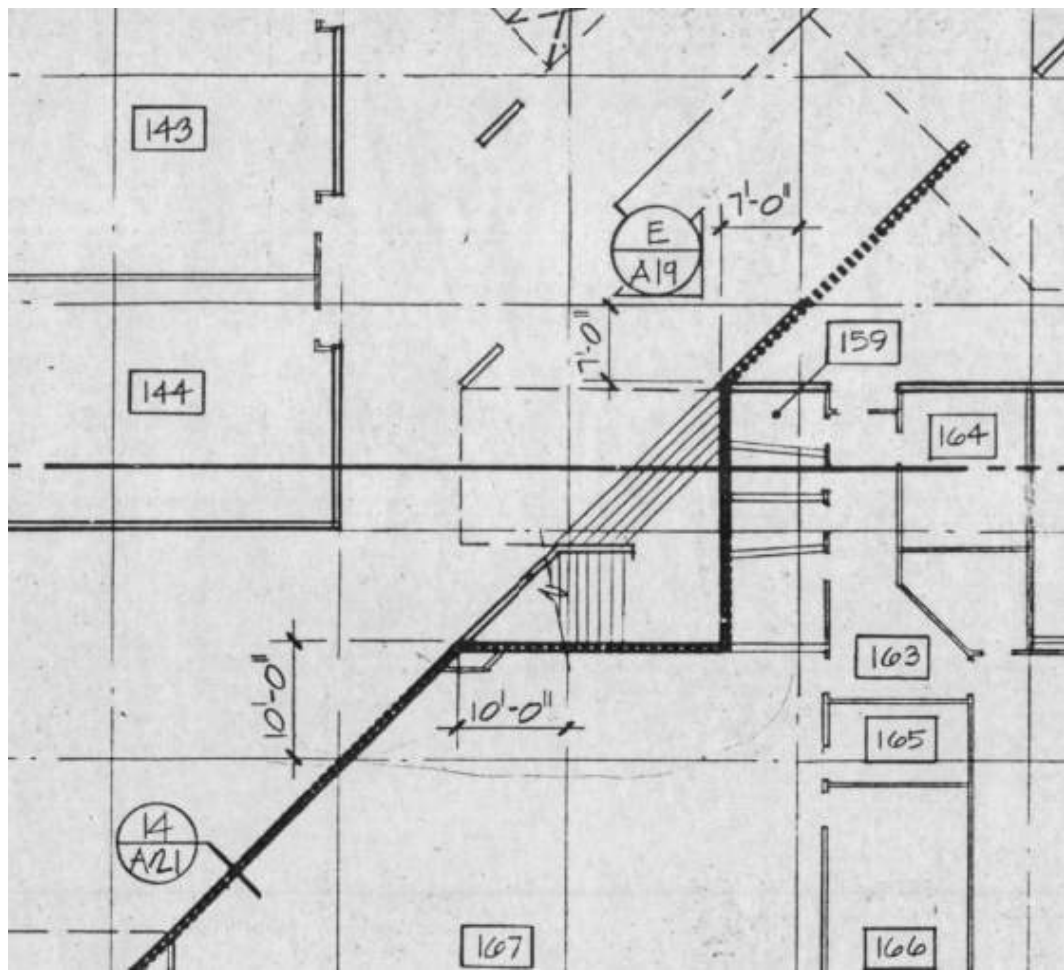
Opportunities



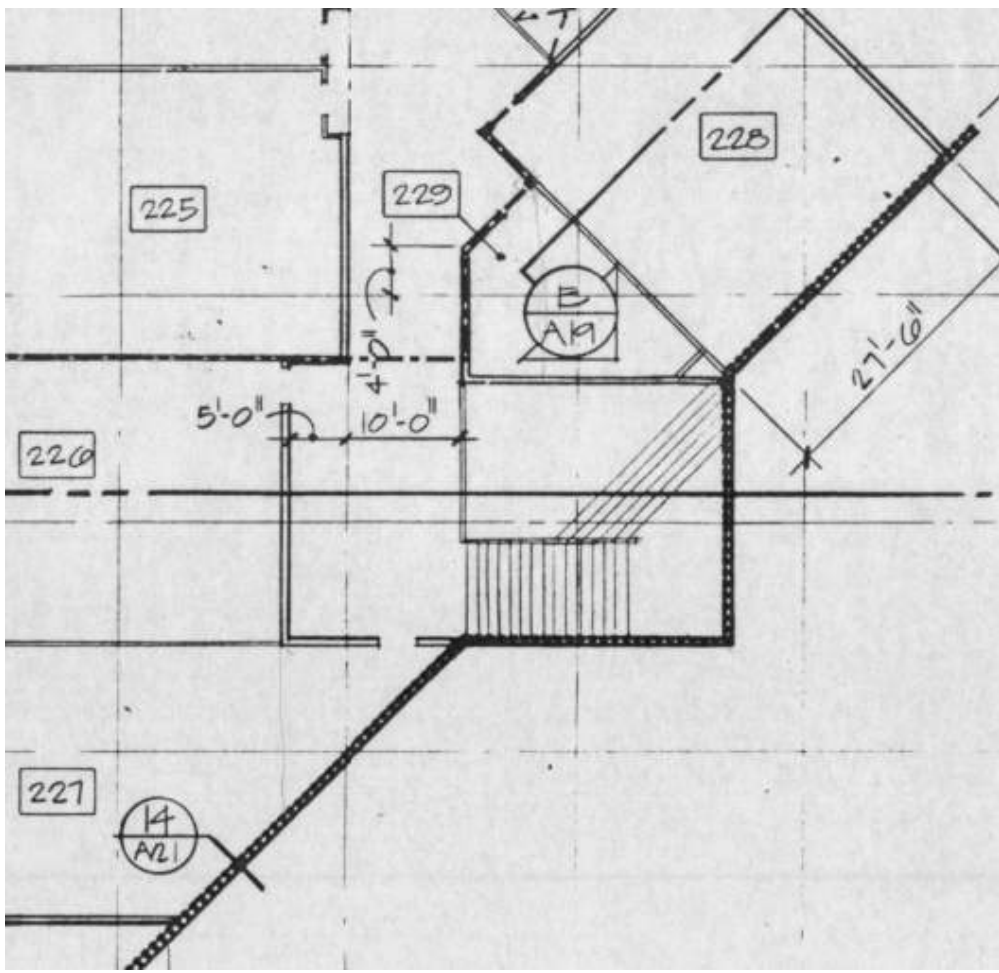
Middle School Stair



EXISTING STAIR CONDITION

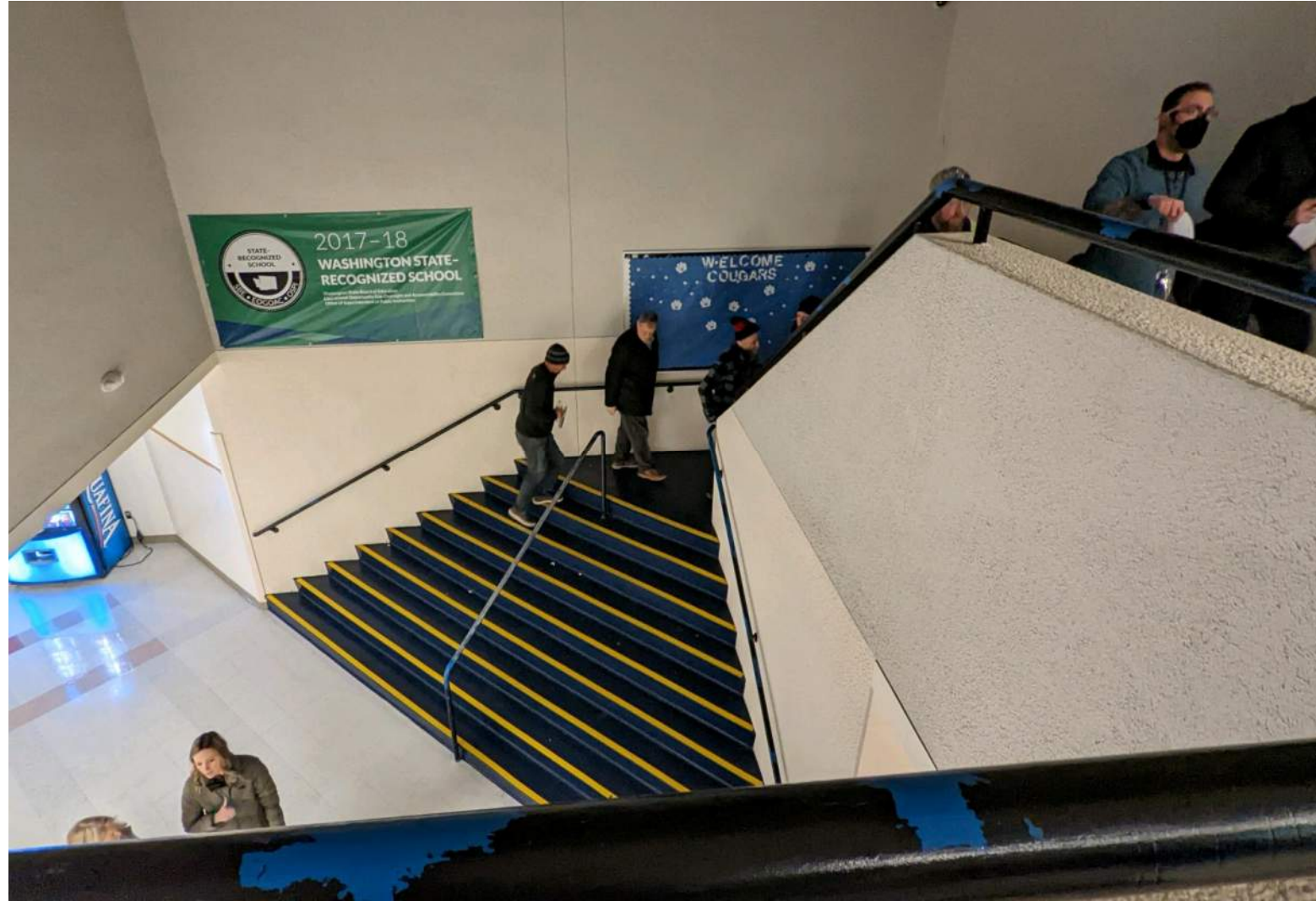


LEVEL 1

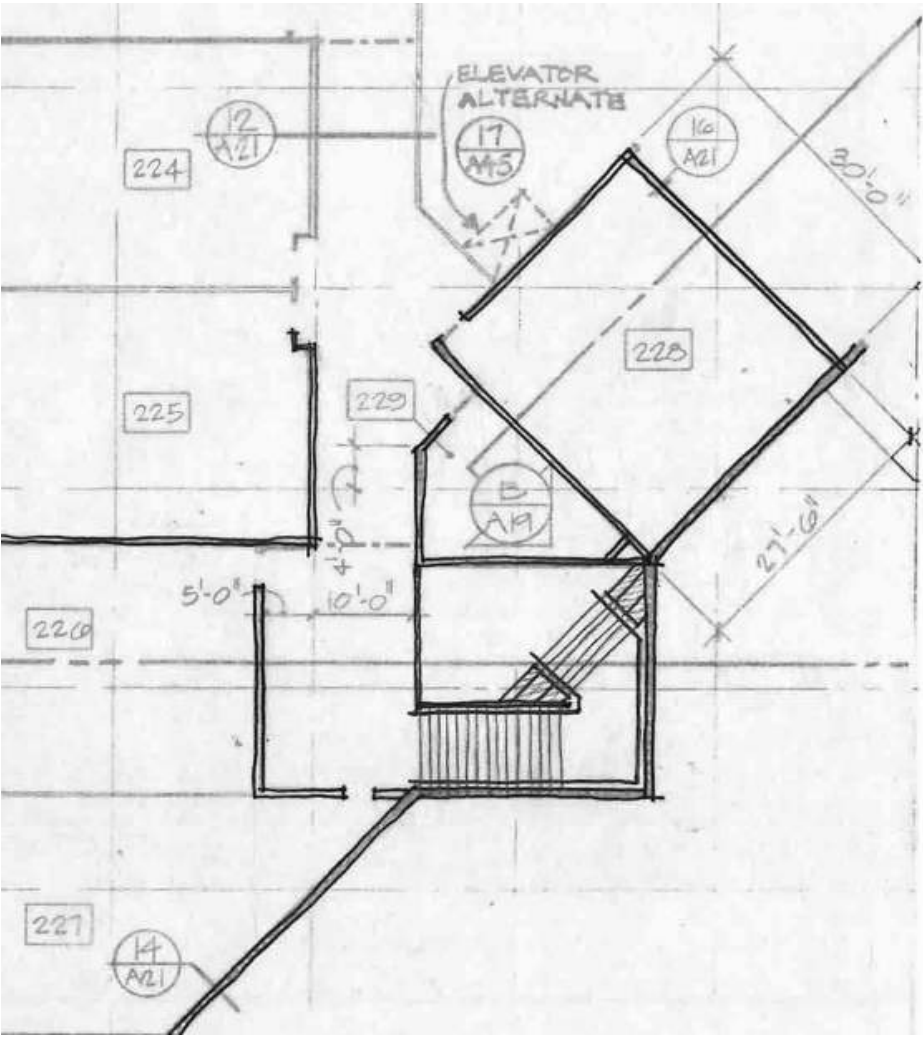


LEVEL 2

EXISTING STAIR CONDITION



DESIGN STUDY - A

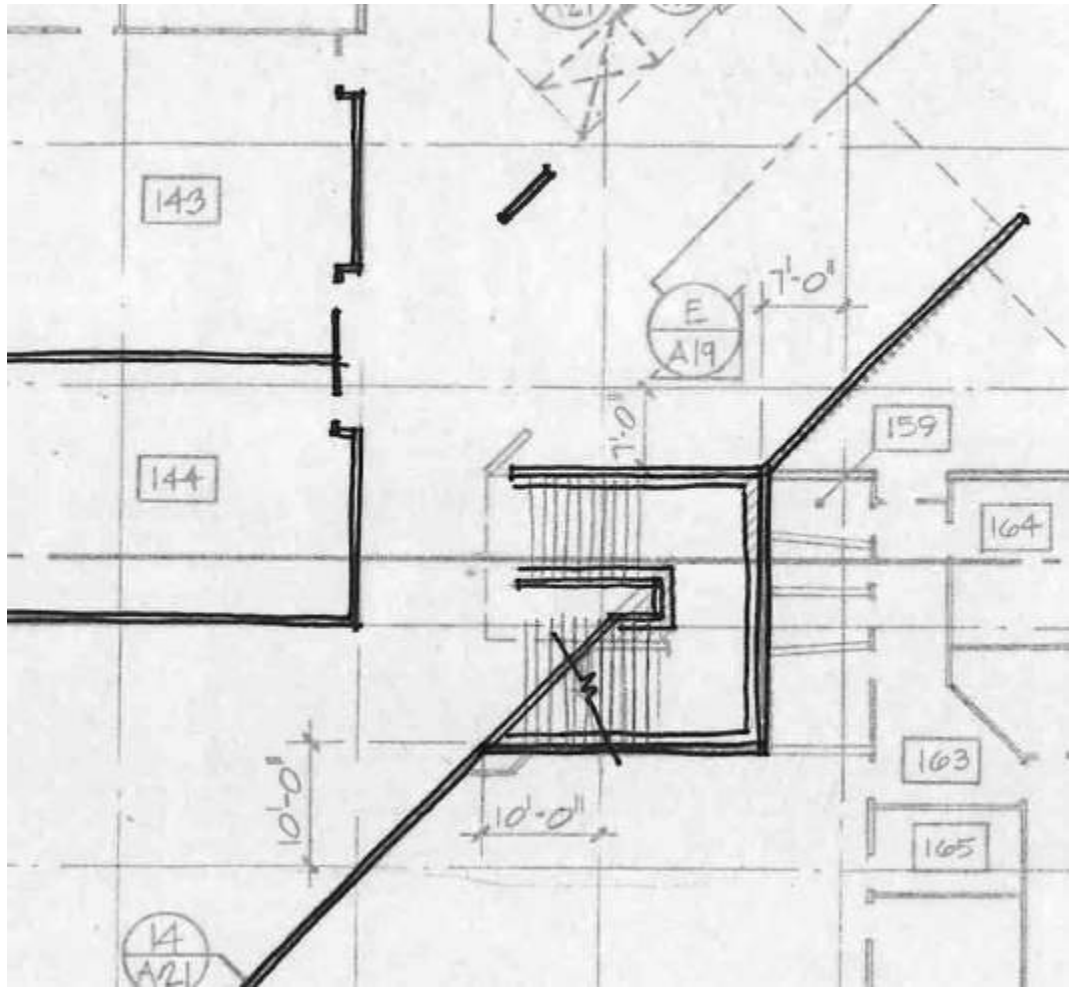


LEVEL 2

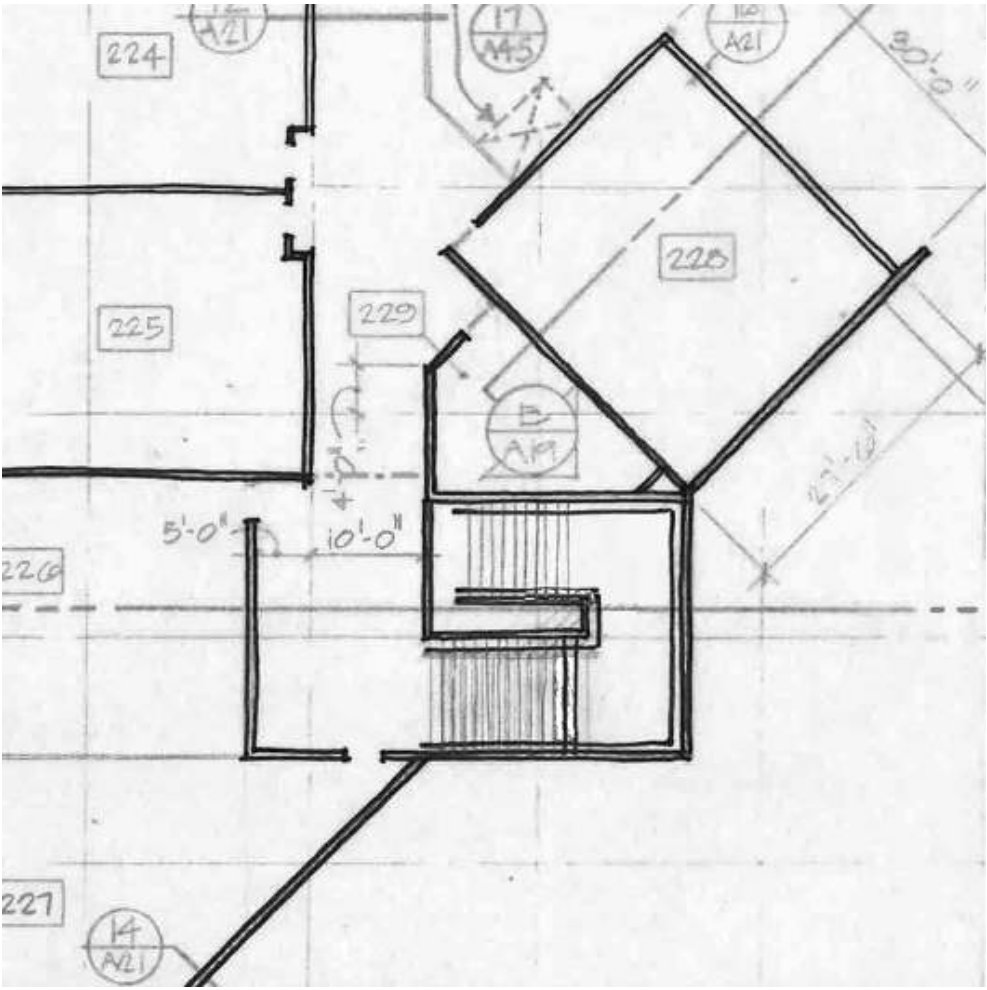


EXIST

DESIGN STUDY - B



LEVEL 1



LEVEL 2

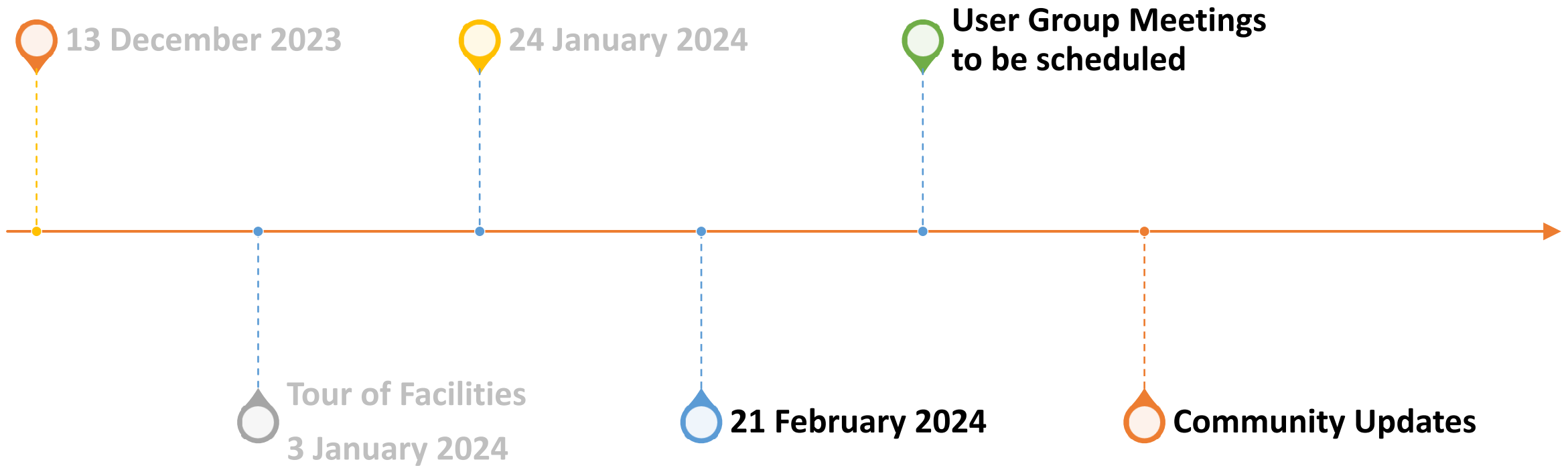
DESIGN STUDY - B





- Please share any items that you would like to discuss further.

SCHEDULE



Future Topics

- Sustainability
- Athletic field surface
- Wayfinding & graphics
- Play
- Interior design

Upcoming User Meetings

- Administration team
- Security team
- Maintenance & Operations

THANK YOU!



INTEGRUS

A COLLABORATION OF YGH & INTEGRUS ARCHITECTURE