

BOARD OF COOPERATIVE EDUCATIONAL SERVICES
REPORT CARD



- Career and Technical Education
- Alternative Education
- Adult Career and Technical Education
- Adult Basic Education
- Special Education
- Professional Development
- 2023-2024** Expenses

2023-2024

Eastern Suffolk BOCES

Eastern Suffolk BOCES
Board of Cooperative Educational Services
2023-2024 Report Card

Table of Contents

	Page
Component/Non-Component District List.....	ii
Indicators of BOCES Performance	
Career & Technical Education.....	1-3
Alternative Education.....	4-5
Adult Career & Technical Education.....	6
Adult Basic Education.....	6
Special Education	
Special Education Enrollment and Tuition in BOCES Programs.....	7-8
State Testing Program.....	8-11
Professional Development.....	12
2023-2024 Expenses.....	13

Prior editions of the BOCES Report Card included other data representing information on component districts.

The following data were not included in this report.

- ❖ State Testing Program for All Component Districts
- ❖ Graduation Results

TEST DATA DISCLAIMER

Due to the ongoing impacts of COVID-19, it may not be appropriate to compare current year standardized assessment results with results from prior years. Multiple measures are needed to evaluate the effectiveness of educational programs and successfully prepare students for college, careers, and civic engagement.

BOCES
589100

Component Districts

- Amagansett Union Free School District
- Bay Shore Union Free School District
- Bayport-Blue Point Union Free School District
- Brentwood Union Free School District
- Bridgehampton Union Free School District
- Brookhaven-Comsewogue Union Free School District
- Center Moriches Union Free School District
- Central Islip Union Free School District
- Connetquot Central School District
- East Hampton Union Free School District
- East Islip Union Free School District
- East Moriches Union Free School District
- East Quogue Union Free School District
- Eastport-South Manor Central School District
- Fire Island Union Free School District
- Fishers Island Union Free School District
- Greenport Union Free School District
- Hampton Bays Union Free School District
- Hauppauge Union Free School District
- Islip Union Free School District
- Little Flower Union Free School District
- Longwood Central School District
- Mattituck-Cutchogue Union Free School District
- Middle Country Central School District
- Miller Place Union Free School District
- Montauk Union Free School District
- Mount Sinai Union Free School District
- New Suffolk Common School District
- Oysterponds Union Free School District
- Patchogue-Medford Union Free School District
- Port Jefferson Union Free School District
- Quogue Union Free School District
- Remsenburg-Speonk Union Free School District
- Riverhead Central School District
- Rocky Point Union Free School District
- Sachem Central School District
- Sag Harbor Union Free School District
- Sagaponack Common School District
- Sayville Union Free School District
- Shelter Island Union Free School District
- Shoreham-Wading River Central School District
- South Country Central School District
- Southampton Union Free School District
- Southold Union Free School District
- Springs Union Free School District
- Three Village Central School District
- Tuckahoe Common School District
- Wainscott Common School District
- West Islip Union Free School District
- Westhampton Beach Union Free School District
- William Floyd Union Free School District

Eastern Suffolk BOCES also serves approximately 18 school districts in Western Suffolk County, 56 in Nassau County, and other school districts/BOCES in New York state.

Eastern Suffolk BOCES encompasses 924 square miles

Joint Management Team

- Eastern Suffolk BOCES, Western Suffolk BOCES, Nassau BOCES

Regional Information Center

- Suffolk Regional Information Center

Indicators of BOCES Performance

Career & Technical Education (CTE)

BOCES CTE classes, offered primarily on a half-day basis, prepare high school students from component districts for skilled work force careers. Most CTE programs require two years to complete.

Number of 11th/12th grade students enrolled in a CTE two-year sequence:

- First-year students
- Second-year students
- Second-year students completing
- Completers with technical endorsement

	General Education Students	Students with Disabilities	General Education Students	Students with Disabilities
	2022-2023	2022-2023	2023-2024	2023-2024
First-year students	463	173	664	159
Second-year students	143	102	173	54
Second-year students completing	136	101	154	51
Completers with technical endorsement	105	95	174	58

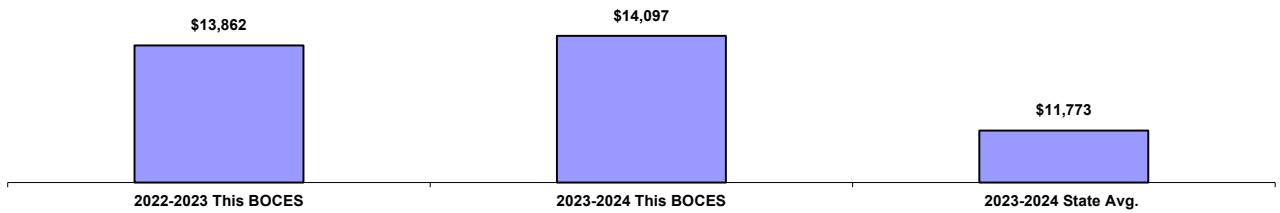
Other Career-Related Programs

Number of 11th/12th grade students enrolled in one-year programs:

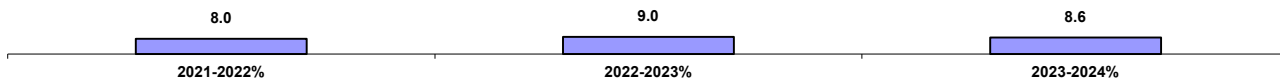
- “New Vision”
- Participated 1 yr of a CTE Program
- Other one-year programs

“New Vision”	0	0	0	0
Participated 1 yr of a CTE Program	349	78	389	155
Other one-year programs	495	195	513	145

Tuition Per Student for CTE Programs
Data Source: 602 Report



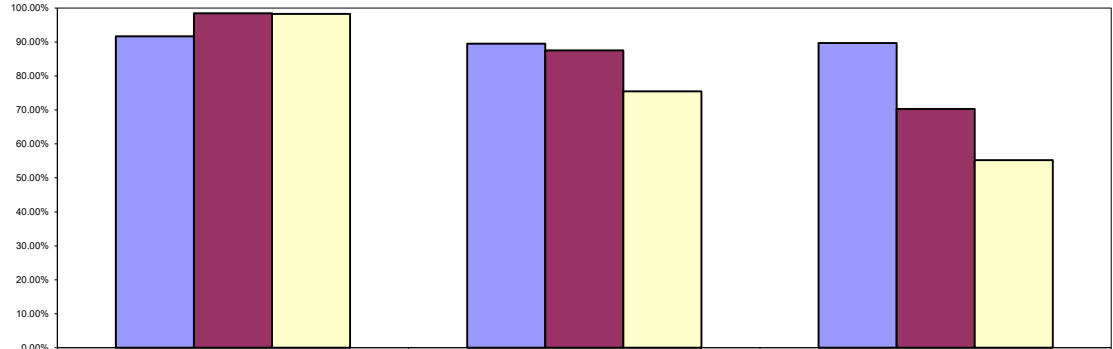
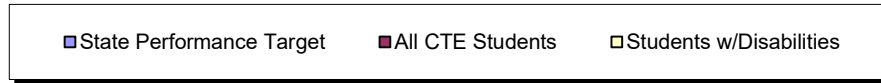
*Number Enrolled in CTE Programs as a Percent of all Juniors and Seniors in Component District High Schools
Data Source: SIRS



* Data Include General Education and Students with Disabilities. Data Source: SIRS

CTE Student Performance on Perkins Indicators Who Left School in 2022-2023

Data Source: SIRS



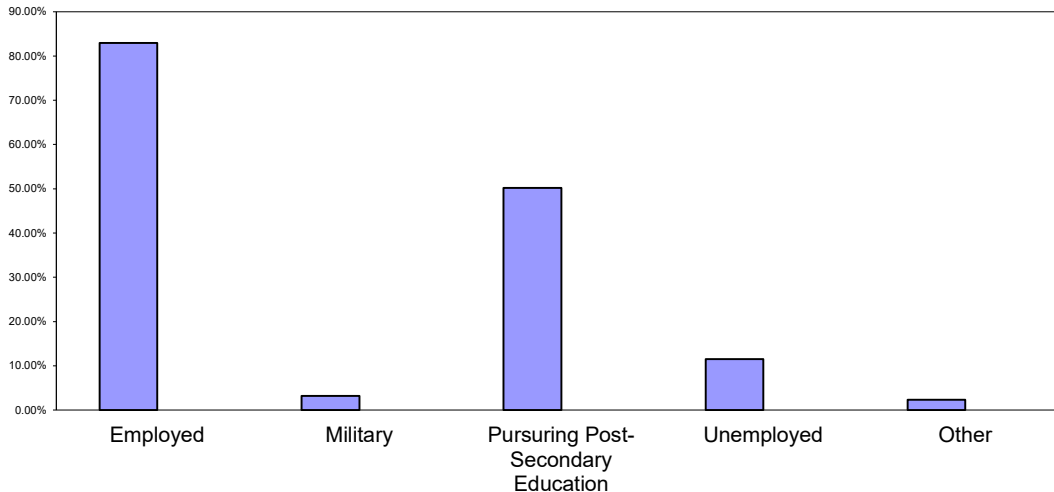
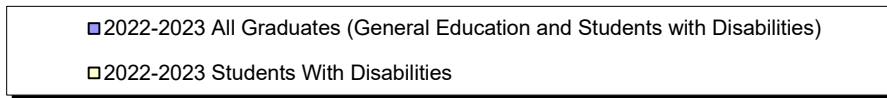
	ELA Regents Success	Math Regents Success	HS Completion
State Performance Target	91.64%	89.49%	89.70%
All CTE Students	98.50%	87.50%	70.25%
Students w/Disabilities	98.25%	75.50%	55.25%

Status of Career and Technical Education (CTE) Students 2022-2023 Placement Outcomes

BOCES Surveys CTE concentrators six months after they last attended their CTE program to determine if they are employed or continuing their education. Data Source: CTE Placement Report

Total Placement

This BOCES	State Target
87.0%	79.6 %



**Test Assessing Secondary Completion Leading to TASC
For CTE Students Age 16-18
2023-2024**

The Test Assessing Secondary Completion (TASC) is a national examination that is available to adults who did not graduate from high school or whose diplomas may not be recognized by New York State. In New York State, the TASC are offered in English and Spanish.

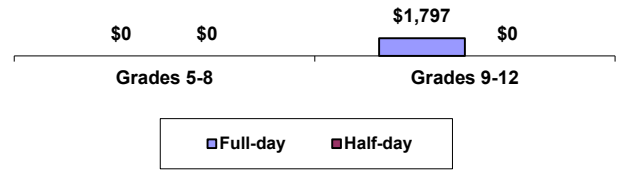
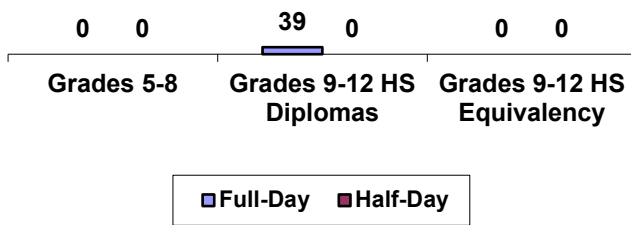
	Grades 9-12 Programs Leading to a TASC	
	Half- day	Full- day
Number of students who:		
Enrolled	0	0
Passing Rate of Students Tested	0	0
Remained / Still Enrolled in the Program	0	0
Left the program and did not enter another district or BOCES program (dropouts)	0	0
Returned to School District:	0	0

Alternative Education

BOCES operates full-day and/or half-day programs for general-education students who have been identified as having special needs not being met in school district programs. Programs may include academics, vocational skills, work-study, specialized activities or a combination of these. The BOCES Report Card includes alternative education program enrollment and outcome data for students in grades 5 through 8, as well as students in programs leading to high school diplomas or high school equivalency diplomas.

**Alternative Education Program Enrollment
June 30, 2024**

2023-2024 Per Student Tuition



Alternative Education Outcomes

The objective of the alternative education program is to retain students until they graduate or return to a regular school setting. Students counted as leaving programs may have done so for a variety of reasons including relocation, medical problems, childcare, incarceration or entering other education programs.

	Grades 5-8		Grades 9-12 Programs Leading to HS Diploma		Grades 9-12 Programs Leading to HS Equivalency Diplomas	
	Full-day	Half-day	Full-day	Half-day	Half-day	Full-day
Number of students who:						
Returned to a school district program	0	0	5	0	0	0
Remained in the BOCES program	0	0	12	0	0	0
Left the program and did not enter another district or BOCES program (dropouts)	0	0	0	0	0	0
Received high school diplomas			22	0		

Alternative Education State Testing Program
2023-2024 School Year

State Assessment- Regents Exams	Counts of Students Tested				Percentage of Students Tested			Count of Students Exempted from Exam with Credit
	Below 55	55-64	65 and Above	Total	Below 55 - Percent	55-64 - Percent	65 and Above - Percent	
Algebra I (CC)	0	0	0	0	0.0%	0.0%	0.0%	
Algebra II (CC)	0	0	0	0	0.0%	0.0%	0.0%	
Geometry (CC)	1	0	0	1	100.0%	0.0%	0.0%	
English Language Arts (CC)	1	1	3	5	20.0%	20.0%	60.0%	
Living Environment	1	0	0	1	100.0%	0.0%	0.0%	
Physical Setting/ Earth Science	1	0	0	1	100.0%	0.0%	0.0%	
Physical Setting/ Chemistry	1	0	0	1	100.0%	0.0%	0.0%	
Physical Setting/ Physics	0	0	0	0	0.0%	0.0%	0.0%	
Global History and Geography II (New Framework)	0	0	1	1	0.0%	0.0%	100.0%	
Global History and Geography Transition	0	0	0	0	0.0%	0.0%	0.0%	
United States History and Government	0	2	2	4	0.0%	50.0%	50.0%	

Adult Career and Technical Education (CTE)

Adult CTE programs enhance academic and workplace skills and enable participants to gain employment or career advancement. *Data Source: ASISTS*

	This BOCES Count Percentage		BOCES Statewide Average
All CTE Programs			
Enrolled during 2022-2023	1752	--	--
Continuing Enrollment after 2022-2023	66	3.77%	15.66%
Completed or Left During 2022-2023	1686	96.23%	85.42%
Left Prior to Completion During 2022-2023	169	9.65%	12.19%
Completed by the End of 2022-2023	1517	86.59%	70.42%
Completed or Left During 2022-2023 and Status Known	1180	67.35%	49.40%
Completed/Left/Status Known and Successfully Placed*	496	28.31%	34.79%
Completed but Not seeking Employment	31	1.77%	3.12%
Non-Traditional CTE Programs			
Enrolled in Non-Traditional Programs During 2022-2023	1546	88.24%	50.95%
Completed a Non-Traditional Program By the End of 2022-2023	1333	76.08%	40.98%
Under-Represented Gender Members Enrolled during 2022-2023	312	17.81%	7.57%
Under-Represented Gender Members Who Completed during 2022-2023	290	16.55%	6.29%

* Successfully Placed means placed in employment, the military or in additional education.

Adult Basic Education

Based on data reported for the National Reporting System (NRS) for adult education programs, enrollment in adult basic education programs for 2023-24 was **2,333**.

Educational Gain

Under the NRS, educational gain is the primary goal for students in adult beginning/intermediate programs, adult secondary (low) programs, and in English for speakers of other languages programs. Students are counted as achieving educational gain if they exceed established reference points in their standardized test scores between enrollment and re-testing.

Educational Program	Enrollment			Educational Gain					
	2021-22	2022-23	2023-24	2021-22		2022-23		2023-24	
					Percent		Percent		Percent
Adult Beginning/Intermediate	369	355	322	78	21.0%	129	36.0%	138	43.0%
Adult Secondary (Low)	1	4	3	0	0.0%	0	0.0%	1	33.0%
ESOL	1,527	1,881	2,008	496	32.0%	897	48.0%	1,007	50.0%

Other Outcomes (2021-22 through 2023-24)

The following outcome measures are consistent with the National Reporting System (NRS) for adult education. Students in adult secondary (high) programs are considered to have a primary goal of obtaining a secondary or high school equivalency diploma. For all other outcomes, the student achievements correlate to the students indicating those goals at intake.

Other Outcomes	Students with Goal			Students Achieving Goal					
	2021-22	2022-23	2023-24	2021-22		2022-23		2023-24	
					Percent		Percent		Percent
Entered employment	0	0	0	0	0.0%	0	0.0%	0	0.0%
Retained employment	0	0	0	0	0.0%	0	0.0%	0	0.0%
Obtained secondary or HS equivalency diploma	34	170	120	9	26.0%	45	26.0%	45	38.0%
Entered post-secondary education or training	0	0	0	0	0.0%	0	0.0%	0	0.0%

Special Education

Special Education Enrollment and Tuition

When placing students, districts select among classrooms with different student/staff ratios consistent with each student's Individualized Education Program (IEP). The following are six of the alternatives:

- ❖ 12 students per teacher plus one paraprofessional (12:1:1)
- ❖ 6 students per teacher plus one paraprofessional (6:1:1)
- ❖ 12 students per teacher plus four paraprofessionals (12:1+1:3)
- ❖ 8 students per teacher plus 1 paraprofessional (8:1:1)
- ❖ 15 students per teacher plus 1 paraprofessional (15:1:1)
- ❖ 6 students per teacher plus 2.5 paraprofessional (6:1:2.5)

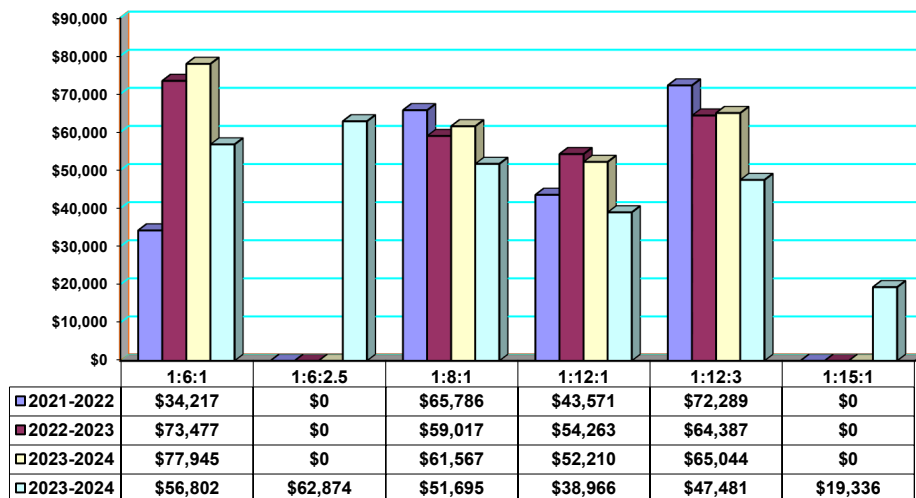
An addendum of enrollment and tuition information will be attached to this report if this BOCES provides other options of student/staff ratios.

Tuition rates exclude the costs of related services, preschool and summer school programs. BOCES with multiple tuition rates for a program have calculated an average rate. *Data source: 602 Report*

Enrollment Trends

	2021-22	2022-23	2023-2024
8:1:1	1,711	1,483	1,543
12:1+1:3	48	45	44
6:1:1	89	91	145
12:1:1	133	520	514
15:1:1	0	0	0
6:1:2.5	0	0	0

Tuition Rates Per Student 2021-2022 through 2023-2024



Special Education State Testing Program 2023-2024 School Year

These data are results of State assessments for students enrolled in BOCES programs.

Data Source: Data Warehouse

State Assessment	Counts of Students Tested					Percentage of Students Tested		No Valid Score
	Level 1	Level 2	Level 3	Level 4	Total	Level 2-4	Level 3-4	
						Percent	Percent	
Grade 3 English Language Arts	6	4	0	0	10	40.0%	0.0%	0
Grade 4 English Language Arts	15	3	0	0	18	20.0%	0.0%	0
Grade 5 English Language Arts	22	3	1	1	27	18.5%	7.4%	0
Grade 6 English Language Arts	26	5	2	0	33	21.2%	6.1%	0
Grade 7 English Language Arts	23	2	1	0	26	11.5%	3.9%	0
Grade 8 English Language Arts	17	4	0	0	21	19.1%	0.0%	0
Grade 3 Mathematics	5	4	0	0	9	44.4%	0.0%	0
Grade 4 Mathematics	11	4	2	0	17	35.3%	11.8%	0
Grade 5 Mathematics	22	4	0	0	26	15.4%	0.0%	0
Grade 6 Mathematics	24	5	1	1	31	22.6%	6.5%	0
Grade 7 Mathematics	22	5	0	0	27	18.5%	0.0%	0
Grade 8 Mathematics	20	0	2	0	22	9.1%	9.1%	0

Level 4	These students exceed the standards and are moving toward high performance on the Regents examination.
Level 3	These students meet the standards and, with continued steady growth, should pass the Regents examination.
Level 2	These students need extra help to meet the standards and pass the Regents examination.
Level 1	These students have serious academic deficiencies.

Special Education State Testing Program (cont'd.)
2023-2024 School Year

State Assessment- Regents Exams	Counts of Students Tested				Percentage of Students Tested			Count of Students Exempted from Exam with Credit
	Below 55	55-64	65 and Above	Total	Below 55 - Percent	55-64 - Percent	65 and Above - Percent	
Algebra 1 (CC)	36	11	2	49	73.5%	22.4%	4.1%	
Algebra 2 (CC)	6	1	10	17	35.3%	5.9%	58.8%	
Geometry (CC)	11	4	5	20	55.0%	20.0%	25.0%	
Living Environment	41	9	27	77	53.2%	11.7%	35.1%	
Physical Setting/ Earth Science	39	8	14	61	63.9%	13.1%	23.0%	
Physical Setting/ Chemistry	3	5	6	14	21.4%	35.7%	42.9%	
Physical Setting/ Physics	0	0	0	0	0.0%	0.0%	0.0%	
English Language Arts (CC)	82	18	64	164	50.0%	11.0%	39.0%	
Regents ELA	0	0	0	0	0.0%	0.0%	0.0%	
Global History and Geography II (New Framework)	50	12	50	112	44.6%	10.7%	44.6%	
Global History & Geography Transition	0	0	0	0	0.0%	0.0%	0.0%	
United States History & Government	49	21	62	132	37.1%	15.9%	47.0%	

**Students with Severe Disabilities Performance on the
New York State Alternate Assessments
2023-2024 School Year**

State Assessment	Counts of Students Tested					Percentage of Students Tested		No Valid Score
	Level 1	Level 2	Level 3	Level 4	Total	Level 2-4 Percent	Level 3-4 Percent	
Grade 3 English Language Arts	0	5	17	0	22	100.0%	77.3%	0.0%
Grade 4 English Language Arts	1	3	10	2	16	93.8%	75.0%	0.0%
Grade 5 English Language Arts	4	2	10	0	16	75.0%	62.5%	0.0%
Grade 6 English Language Arts	1	3	2	0	6	83.3%	33.3%	0.0%
Grade 7 English Language Arts	2	0	0	10	12	83.3%	83.3%	0.0%
Grade 8 English Language Arts	1	0	9	0	10	90.0%	90.0%	0.0%
High School English Language Arts	1	0	8	3	12	91.7%	91.7%	0.0%
Grade 3 Mathematics	2	3	17	0	22	90.9%	77.3%	0.0%
Grade 4 Mathematics	3	1	10	2	16	81.3%	75.0%	0.0%
Grade 5 Mathematics	4	2	10	0	16	75.0%	62.5%	0.0%
Grade 6 Mathematics	2	2	2	0	6	66.7%	33.3%	0.0%
Grade 7 Mathematics	2	1	9	0	12	83.3%	75.0%	0.0%
Grade 8 Mathematics	0	3	6	1	10	100.0%	70.0%	0.0%
High School Mathematics	1	0	5	6	12	91.7%	91.7%	0.0%

Data Source: Data Warehouse

Level 4	These students exceed the standards and are moving toward high performance on the Regents examination.
Level 3	These students meet the standards and, with continued steady growth, should pass the Regents examination.
Level 2	These students need extra help to meet the standards and pass the Regents examination.
Level 1	These students have serious academic deficiencies.

Professional Development 2023-2024 School Year

The data in this chart is from BOCES-sponsored professional development and offered by Instructional Support Divisions.

BOCES provided training in the following areas:	Number of Hours Offered and Number of Participants:									
	Superintendents or District-level		Principals or Building-level admins		Teachers		Paraprofessionals		Other	
	Hours	# Staff	Hours	# Staff	Hours	# Staff	Hours	# Staff	Hours	# Staff
Curriculum & Instruction:										
Learning Standards	88.25	3	242.25	30	2438.25	873	73.25	34	839.25	125
Instructional Strategies	259.25	114	284.25	15	3941.25	3691	251.25	263	524.25	389
Data-Driven Instruction	175	46	94	23	455	453	94	1	149	28
Effective Use of Technology	19315.50	136	19358.50	33	19877.50	24655	19280.50	248	19746	275
Project Based Learning	24.50	4	24.50	0	73.50	410	24.50	0	24.50	0
Parent Engagement	9	2	9	0	9	31	9	40	17	60
RBE-RN	230	535	106.50	95	736	3092	85.50	72	182	614
College, Career & Civic Readiness	0	0	0	0	0	0	0	0	0	0
Response to Intervention	5	1	15	3	35	7	0	0	35	7
Early Childhood Education	0	0	0	0	0	0	0	0	0	0
Career and Technical Education	95.50	7	95.50	17	95.50	559	95.50	150	95.50	24
Middle Level Education	10	2	135	27	670	134	0	0	320	64
Special Education Strategies	619	18	682	85	849	1515	619	955	1415	304
Leadership:										
APPR: Lead Evaluator & Principal Evaluator Training	114	38	4	153	54	10	4	0	809	151
Leadership Development	183	331	16	194	478	166	16	0	896	189
District & School Strategic Planning	185	124	86	11	301	301	86	398	423	85
Using Data	460	900	0	215	1826	1422	13	5	113	410
Culture/Climate (indicate below)										
Diversity/Equity/Inclusivity	40	163	37	69	437	313	42	39	229	194
Social – Emotional Learning	139.50	13	128.50	13	319.50	761	128.50	128	390.50	387
Other culture/climate	30	7	18	19	210	163	18	98	699	220
Safety	0	0	0	0	0	0	0	0	0	0
Other	664.25	19	664.25	11	689.25	418	664.25	47	664.25	131

2023-2024 Expenses

Data Source: SA111, schedule 2A

Administrative Expenses.....	\$	44,240,046.74
Capital Expenses.....	\$	6,021,258.00
Total Program Expenses.....	\$	391,499,900.19
Total Expenses.....	\$	441,761,204.93

