

BOARD OF COOPERATIVE EDUCATIONAL SERVICES  
**REPORT CARD**



- Career and Technical Education
- Alternative Education
- Adult Career and Technical Education
- Adult Basic Education
- Special Education
- Professional Development
- 2023-2024** Expenses

**2023-2024**

**Ontario-Seneca-Yates-Cayuga-Wayne BOCES**

**Ontario-Seneca-Yates-Cayuga-Wayne BOCES  
Board of Cooperative Educational Services  
2023-2024 Report Card**

**Table of Contents**

	<b>Page</b>
<b>Component/Non-Component District List.....</b>	<b>ii</b>
 <b>Indicators of BOCES Performance</b>	
<b>Career &amp; Technical Education.....</b>	<b>1-3</b>
<b>Alternative Education.....</b>	<b>4-5</b>
<b>Adult Career &amp; Technical Education.....</b>	<b>6</b>
<b>Adult Basic Education.....</b>	<b>6</b>
<b>Special Education</b>	
<b>Special Education Enrollment and Tuition in BOCES Programs.....</b>	<b>7-8</b>
<b>State Testing Program.....</b>	<b>8-11</b>
<b>Professional Development.....</b>	<b>12</b>
 <b>2023-2024 Expenses.....</b>	 <b>13</b>

Prior editions of the BOCES Report Card included other data representing information on component districts.

The following data were not included in this report.

- ❖ State Testing Program for All Component Districts
- ❖ Graduation Results

**TEST DATA DISCLAIMER**

Due to the ongoing impacts of COVID-19, it may not be appropriate to compare current year standardized assessment results with results from prior years. Multiple measures are needed to evaluate the effectiveness of educational programs and successfully prepare students for college, careers, and civic engagement.

**BOCES**  
**4390**

**Component Districts**

- Canandaigua City CSD
- Clyde-Savannah CSD
- Dundee CSD
- East Bloomfield CSD
- Gananda CSD
- Geneva City CSD
- Gorham-Middlesex CSD
- Honeoye CSD
- Lyons CSD
- Manchester-Shortsville CSD
- Marion CSD
- Naples CSD
- Newark CSD
- North Rose-Wolcott CSD
- Palmyra-Macedon CSD
- Penn Yan CSD
- Phelps-Clifton Springs CSD
- Red Creek CSD
- Romulus CSD
- Seneca Falls CSD
- Sodus CSD
- Victor CSD
- Waterloo CSD
- Wayne CSD
- Williamson CSD

**Ontario-Seneca-Yates-Cayuga-Wayne BOCES encompasses 1,740 square miles.**

## **Joint Management Team**

- Genesee Valley BOCES
- Monroe 1 BOCES
- Monroe 2-Orleans BOCES
- Wayne-Finger Lakes BOCES

## **Regional Information Center**

- EduTech

**To learn more about the comprehensive nature of BOCES in NYS, go to:  
<https://www.boces.org/>**

# Indicators of BOCES Performance

## Career & Technical Education (CTE)

BOCES CTE classes, offered primarily on a half-day basis, prepare high school students from component districts for skilled work force careers. Most CTE programs require two years to complete.

Number of 11<sup>th</sup>/12<sup>th</sup> grade students enrolled in a CTE two-year sequence:

First-year students

Second-year students

Second-year students completing

Completers with technical endorsement

General Education Students	Students with Disabilities	General Education Students	Students with Disabilities
2022-2023	2022-2023	2023-2024	2023-2024
548	169	519	151
422	113	459	115
397	103	407	102
293	53	315	61

### Other Career-Related Programs

Number of 11<sup>th</sup>/12<sup>th</sup> grade students enrolled in one-year programs:

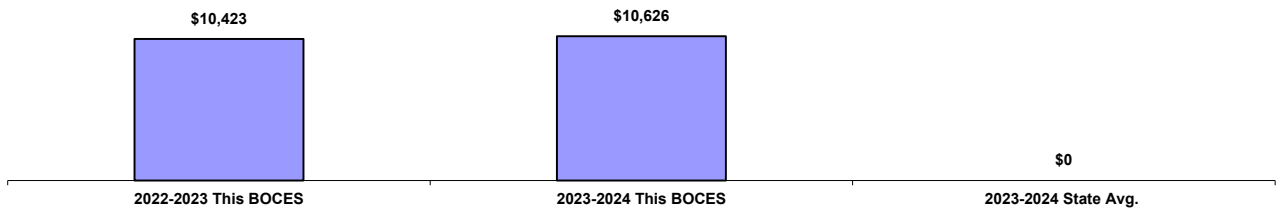
“New Vision”

Participated 1 yr of a CTE Program

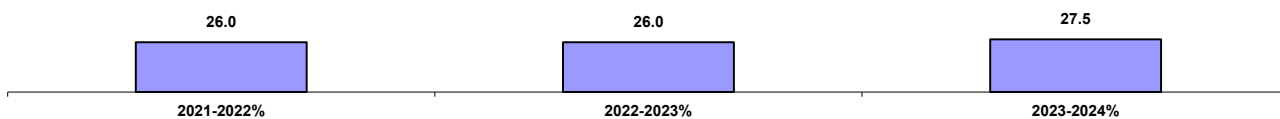
Other one-year programs

74	0	76	0
0	0	0	0
0	0	0	0

Tuition Per Student for CTE Programs  
Data Source: 602 Report



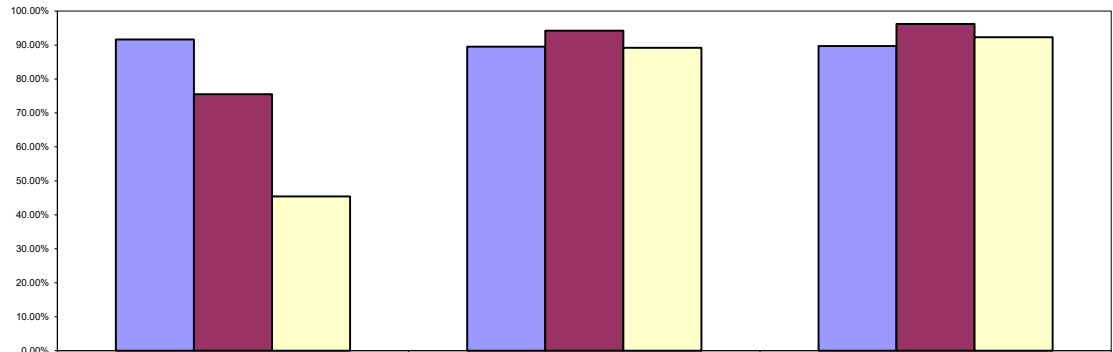
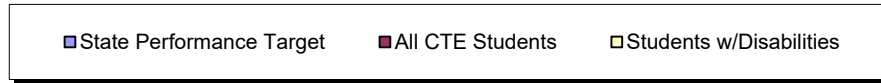
\*Number Enrolled in CTE Programs as a Percent of all Juniors and Seniors in Component District High Schools  
Data Source: SIRS



\* Data Include General Education and Students with Disabilities. Data Source: SIRS

# CTE Student Performance on Perkins Indicators Who Left School in 2022-2023

Data Source: SIRS



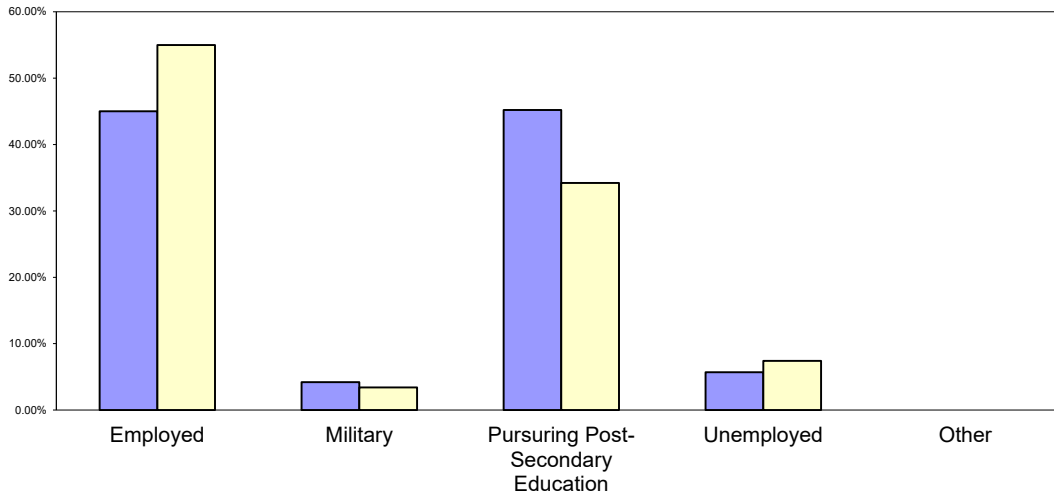
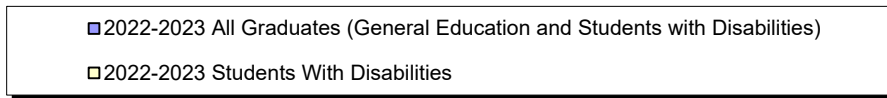
	ELA Regents Success	Math Regents Success	HS Completion
State Performance Target	91.64%	89.49%	89.70%
All CTE Students	75.50%	94.20%	96.20%
Students w/Disabilities	45.40%	89.20%	92.30%

## Status of Career and Technical Education (CTE) Students 2022-2023 Placement Outcomes

BOCES Surveys CTE concentrators six months after they last attended their CTE program to determine if they are employed or continuing their education. *Data Source: CTE Placement Report*

### Total Placement

This BOCES	State Target
<b>94.3%</b>	<b>79.6 %</b>



**General Educational Development Test (GED Test)  
For CTE Students Age 16-18  
2023-2024**

New York State selected the General Educational Development Test (GED® Test) to replace the Test Assessing Secondary Completion (TASC™ Test) as the primary pathway to a New York State High School Equivalency (HSE) Diploma, effective January 2022.

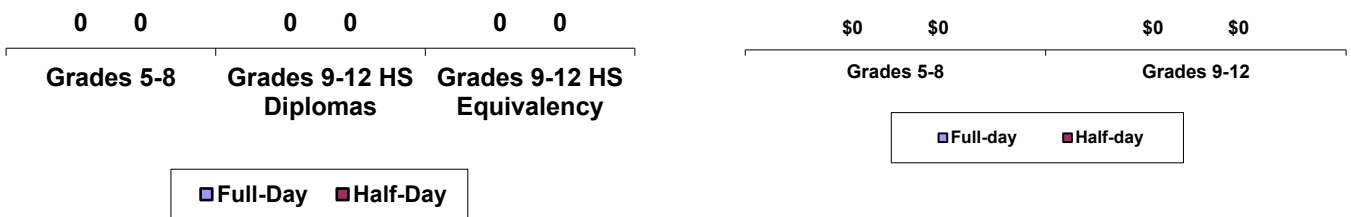
	<b>Grades 9-12 Programs Leading to a GED</b>	
	<b>Half- day</b>	<b>Full- day</b>
<b>Number of students who:</b>		
<b>Enrolled</b>	0	0
<b>Passing Rate of Students Tested</b>	0	0
<b>Remained / Still Enrolled in the Program</b>	0	0
<b>Left the program and did not enter another district or BOCES program (dropouts)</b>	0	0
<b>Returned to School District:</b>	0	0

# Alternative Education

BOCES operates full-day and/or half-day programs for general-education students who have been identified as having special needs not being met in school district programs. Programs may include academics, vocational skills, work-study, specialized activities or a combination of these. The BOCES Report Card includes alternative education program enrollment and outcome data for students in grades 5 through 8, as well as students in programs leading to high school diplomas or high school equivalency diplomas.

## Alternative Education Program Enrollment June 30, 2024

2023-2024 Per Student Tuition



## Alternative Education Outcomes

The objective of the alternative education program is to retain students until they graduate or return to a regular school setting. Students counted as leaving programs may have done so for a variety of reasons including relocation, medical problems, childcare, incarceration or entering other education programs.

	Grades 5-8		Grades 9-12 Programs Leading to HS Diploma		Grades 9-12 Programs Leading to HS Equivalency Diplomas	
	Full-day	Half-day	Full-day	Half-day	Half-day	Full-day
<b>Number of students who:</b>						
<b>Returned to a school district program</b>	0	0	0	0	0	0
<b>Remained in the BOCES program</b>	0	0	0	0	0	0
<b>Left the program and did not enter another district or BOCES program (dropouts)</b>	0	0	0	0	0	0
<b>Received high school diplomas</b>			0	0		

**Alternative Education State Testing Program**  
**2023-2024 School Year**

State Assessment- Regents Exams	Counts of Students Tested				Percentage of Students Tested			Count of Students Exempted from Exam with Credit
	Below 55	55-64	65 and Above	Total	Below 55 - Percent	55-64 - Percent	65 and Above - Percent	
Algebra I (CC)	0	0	0	0	0.0%	0.0%	0.0%	
Algebra II (CC)	0	0	0	0	0.0%	0.0%	0.0%	
Geometry (CC)	0	0	0	0	0.0%	0.0%	0.0%	
English Language Arts (CC)	0	0	0	0	0.0%	0.0%	0.0%	
Living Environment	0	0	0	0	0.0%	0.0%	0.0%	
Physical Setting/ Earth Science	0	0	0	0	0.0%	0.0%	0.0%	
Physical Setting/ Chemistry	0	0	0	0	0.0%	0.0%	0.0%	
Physical Setting/ Physics	0	0	0	0	0.0%	0.0%	0.0%	
Global History and Geography II (New Framework)	0	0	0	0	0.0%	0.0%	0.0%	
Global History and Geography Transition	0	0	0	0	0.0%	0.0%	0.0%	
United States History and Government	0	0	0	0	0.0%	0.0%	0.0%	

## Adult Career and Technical Education (CTE)

Adult CTE programs enhance academic and workplace skills and enable participants to gain employment or career advancement. *Data Source: ASISTS*

	This BOCES Count Percentage		BOCES Statewide Average
<b>All CTE Programs</b>			
Enrolled during 2022-2023	3	--	--
Continuing Enrollment after 2022-2023	0	0.0%	15.66%
Completed or Left During 2022-2023	3	100%	85.42%
Left Prior to Completion During 2022-2023	2	66.7%	12.19%
Completed by the End of 2022-2023	1	33.3%	70.42%
Completed or Left During 2022-2023 and Status Known	0	0.0%	49.40%
Completed/Left/Status Known and Successfully Placed*	0	0.0%	34.79%
Completed but Not seeking Employment	0	0.0%	3.12%
<b>Non-Traditional CTE Programs</b>			
Enrolled in Non-Traditional Programs During 2022-2023	0	0.0%	50.95%
Completed a Non-Traditional Program By the End of 2022-2023	0	0.0%	40.98%
Under-Represented Gender Members Enrolled during 2022-2023	0	0.0%	7.57%
Under-Represented Gender Members Who Completed during 2022-2023	0	0.0%	6.29%

\* Successfully Placed means placed in employment, the military or in additional education.

## Adult Basic Education

Based on data reported for the National Reporting System (NRS) for adult education programs, enrollment in adult basic education programs for 2023-24 was 51.

### Educational Gain

Under the NRS, educational gain is the primary goal for students in adult beginning/intermediate programs, adult secondary (low) programs, and in English for speakers of other languages programs. Students are counted as achieving educational gain if they exceed established reference points in their standardized test scores between enrollment and re-testing.

Educational Program	Enrollment			Educational Gain					
	2021-22	2022-23	2023-24	2021-22		2022-23		2023-24	
					Percent		Percent		Percent
Adult Beginning/Intermediate	50	58	58	8	16%	58	29%	14	27%
Adult Secondary (Low)	4	0	1	0	0.0%	0	0.0%	1	100%
ESOL	0	0	0	0	0.0%	0	0.0%	0	0.0%

### Other Outcomes (2021-22 through 2023-24)

The following outcome measures are consistent with the National Reporting System (NRS) for adult education. Students in adult secondary (high) programs are considered to have a primary goal of obtaining a secondary or high school equivalency diploma. For all other outcomes, the student achievements correlate to the students indicating those goals at intake.

Other Outcomes	Students with Goal			Students Achieving Goal					
	2021-22	2022-23	2023-24	2021-22		2022-23		2023-24	
					Percent		Percent		Percent
Entered employment	106	42	46	7	6.6%	16	27%	10	21%
Retained employment	0	0	0	0	0.0%	0	0.0%	0	0.0%

<b>Obtained secondary or HS equivalency diploma</b>	27	3	0	6	22%	1	33%	0	0.0%
<b>Entered post-secondary education or training</b>	0	0	0	0	0.0%	0	0.0%	0	0.0%

## Special Education

### Special Education Enrollment and Tuition

When placing students, districts select among classrooms with different student/staff ratios consistent with each student’s Individualized Education Program (IEP). The following are six of the alternatives:

- ❖ 12 students per teacher plus one paraprofessional (12:1:1)
- ❖ 6 students per teacher plus one paraprofessional (6:1:1)
- ❖ 12 students per teacher plus four paraprofessionals (12:1+1:3)
- ❖ 8 students per teacher plus 1 paraprofessional (8:1:1)
- ❖ 15 students per teacher plus 1 paraprofessional (15:1:1)
- ❖ 6 students per teacher plus 2.5 paraprofessional (6:1:2.5)

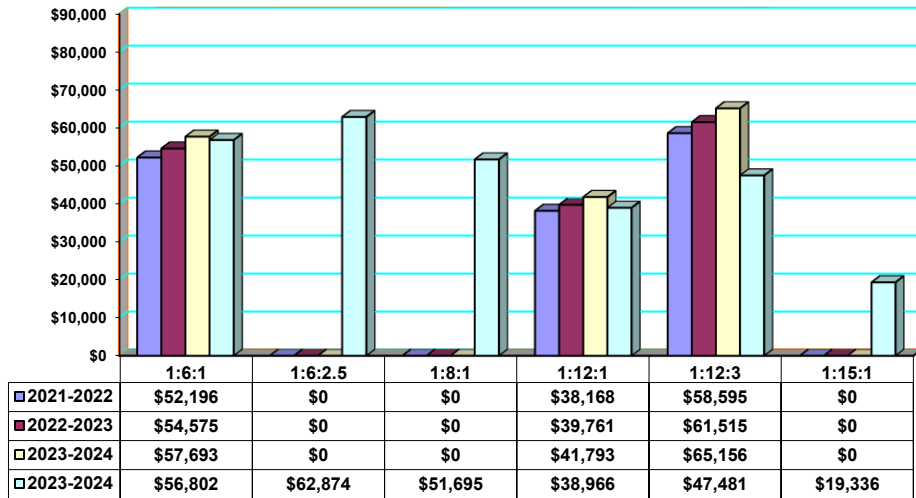
An addendum of enrollment and tuition information will be attached to this report if this BOCES provides other options of student/staff ratios.

Tuition rates exclude the costs of related services, preschool and summer school programs. BOCES with multiple tuition rates for a program have calculated an average rate. *Data source: 602 Report*

### Enrollment Trends

	2021-22	2022-23	2023-2024
<b>8:1:1</b>	0	0	0
<b>12:1+1:3</b>	6	7	5
<b>6:1:1</b>	448	432	447
<b>12:1:1</b>	104	102	109
<b>15:1:1</b>	0	0	0
<b>6:1:2.5</b>	0	0	0

## Tuition Rates Per Student 2021-2022 through 2023-2024



## Special Education State Testing Program 2023-2024 School Year

These data are results of State assessments for students enrolled in BOCES programs.

*Data Source: Data Warehouse*

State Assessment	Counts of Students Tested					Percentage of Students Tested		No Valid Score
	Level 1	Level 2	Level 3	Level 4	Total	Level 2-4	Level 3-4	
						Percent	Percent	
Grade 3 English Language Arts	23	2	0	0	25	8%	0.0%	0
Grade 4 English Language Arts	26	4	1	0	31	16.1%	3.2%	0
Grade 5 English Language Arts	21	4	0	0	25	16%	0.0%	0
Grade 6 English Language Arts	22	3	0	1	26	15.4%	3.8%	0
Grade 7 English Language Arts	24	4	1	0	29	17.2%	3.4%	0
Grade 8 English Language Arts	26	5	1	0	32	18.8%	3.1%	0
Grade 3 Mathematics	22	1	0	0	23	4.3%	0.0%	0

<b>Grade 4 Mathematics</b>	24	3	1	0	28	14.3%	3.6%	0
<b>Grade 5 Mathematics</b>	23	2	0	0	25	8%	0.0%	0
<b>Grade 6 Mathematics</b>	23	1	1	1	26	11.5%	7.7%	0
<b>Grade 7 Mathematics</b>	25	2	1	0	28	10.7%	3.6%	0
<b>Grade 8 Mathematics</b>	26	2	0	0	28	7.1%	0.0%	0

Level 4	These students <b>exceed the standards</b> and are moving toward high performance on the Regents examination.
Level 3	These students <b>meet the standards</b> and, with continued steady growth, should pass the Regents examination.
Level 2	These students <b>need extra help</b> to meet the standards and pass the Regents examination.
Level 1	These students have <b>serious</b> academic deficiencies.

**Special Education State Testing Program (cont'd.)**  
**2023-2024 School Year**

State Assessment- Regents Exams	Counts of Students Tested				Percentage of Students Tested			Count of Students Exempted from Exam with Credit
	Below 55	55-64	65 and Above	Total	Below 55 - Percent	55-64 - Percent	65 and Above - Percent	
Algebra 1 (CC)	29	5	0	34	85.3%	14.7%	0.0%	
Algebra 2 (CC)	0	0	0	0	0.0%	0.0%	0.0%	
Geometry (CC)	0	0	0	0	0.0%	0.0%	0.0%	
Living Environment	19	8	7	34	55.9%	23.5%	20.6%	
Physical Setting/ Earth Science	20	6	4	30	66.7%	20%	13.3%	
Physical Setting/ Chemistry	0	0	0	0	0.0%	0.0%	0.0%	
Physical Setting/ Physics	0	0	0	0	0.0%	0.0%	0.0%	
English Language Arts (CC)	22	4	17	43	51.2%	9.3%	39.5%	
Regents ELA	0	0	0	0	0.0%	0.0%	0.0%	
Global History and Geography II (New Framework)	35	8	9	52	67.3%	15.4%	17.3%	
Global History & Geography Transition	0	0	0	0	0.0%	0.0%	0.0%	
United States History & Government	17	6	8	31	54.8%	19.4%	25.8%	

**Students with Severe Disabilities Performance on the  
New York State Alternate Assessments  
2023-2024 School Year**

State Assessment	Counts of Students Tested					Percentage of Students Tested		No Valid Score
	Level 1	Level 2	Level 3	Level 4	Total	Level 2-4 Percent	Level 3-4 Percent	
Grade 3 English Language Arts	1	0	1	0	2	50%	50%	0.0%
Grade 4 English Language Arts	0	0	3	0	3	100%	100%	0.0%
Grade 5 English Language Arts	2	0	6	0	8	75%	75%	0.0%
Grade 6 English Language Arts	0	1	6	0	7	100%	85.7%	0.0%
Grade 7 English Language Arts	2	1	7	0	10	80%	70%	0.0%
Grade 8 English Language Arts	0	3	5	0	9	88.8%	55.5%	11.1%
High School English Language Arts	1	0	4	0	5	80%	80%	0.0%
Grade 3 Mathematics	0	1	1	0	2	100%	50%	0.0%
Grade 4 Mathematics	0	0	3	0	3	100%	100%	0.0%
Grade 5 Mathematics	2	2	4	0	8	75%	50%	0.0%
Grade 6 Mathematics	1	2	4	0	7	85.7%	57.1%	0.0%
Grade 7 Mathematics	1	1	7	1	10	90%	80%	0.0%
Grade 8 Mathematics	2	2	5	0	9	77.7%	55.5%	0.0%
High School Mathematics	1	0	1	3	5	80%	80%	0.0%

Data Source: Data Warehouse

Level 4	These students <b>exceed the standards</b> and are moving toward high performance on the Regents examination.
Level 3	These students <b>meet the standards</b> and, with continued steady growth, should pass the Regents examination.
Level 2	These students <b>need extra help</b> to meet the standards and pass the Regents examination.
Level 1	These students have <b>serious</b> academic deficiencies.

## Professional Development 2023-2024 School Year

The data in this chart is from BOCES-sponsored professional development and offered by Instructional Support Divisions.

BOCES provided training in the following areas:	Number of Hours Offered and Number of Participants:									
	Superintendents or District-level		Principals or Building-level admins		Teachers		Paraprofessionals		Other	
	Hours	# Staff	Hours	# Staff	Hours	# Staff	Hours	# Staff	Hours	# Staff
<b>Curriculum &amp; Instruction:</b>										
Learning Standards	150	17	137	32	297.5	795	26.5	64	19.5	17
Instructional Strategies	856.75	135	871	204	1382.25	2070	88.75	703	632	176
Data-Driven Instruction	200.5	17	225.5	215	232	262	4	12	219.5	100
Effective Use of Technology	28	35	33.5	67	103	1055	32.5	89	17.5	41
Project Based Learning	0	0	0	0	0	0	0	0	0	0
Parent Engagement	0	0	0	0	0	0	0	0	0	0
RBE-RN	0	0	0	0	0	0	0	0	0	0
College, Career & Civic Readiness	0	0	0	0	0	0	0	0	0	0
Response to Intervention	0	0	0	0	0	0	0	0	0	0
Early Childhood Education	0	0	0	0	0	0	0	0	0	0
Career and Technical Education	0	0	0	0	0	0	0	0	0	0
Middle Level Education	0	0	0	0	0	0	0	0	0	0
Special Education Strategies	146	22	7.5	2	205.5	343	39.5	33	176	24
<b>Leadership:</b>										
APPR: Lead Evaluator & Principal Evaluator Training	0	0	3	163	0	0	0	0	0	0
Leadership Development	31.5	47	34.5	84	15	29	0	0	5	5
District & School Strategic Planning	22.5	21	3	10	4	27	0	0	0	0
Using Data	8	6	2.5	2	4	18	0	0	0	0
<b>Culture/Climate (indicate below)</b>										
Diversity/Equity/Inclusivity	48	67	50.5	55	72.5	252	6	1	10.5	2
Social – Emotional Learning	181	115	167	115	417.25	1726	135.5	271	79.5	157
Other culture/climate	273.5	163	395.9	316	734.4	1131	603.65	351	579.8	568

<b>Safety</b>	0	0	0	0	0	0	0	0	0	0
<b>Other</b>	27.5	6	32.5	17	48	112	9	74	48	140

# 2023-2024 Expenses

Data Source: SA111, schedule 2A

Administrative Expenses.....	\$	7,518,410
Capital Expenses.....	\$	3,988,926
Total Program Expenses.....	\$	145,060,769
Total Expenses.....	\$	152,579,180

