



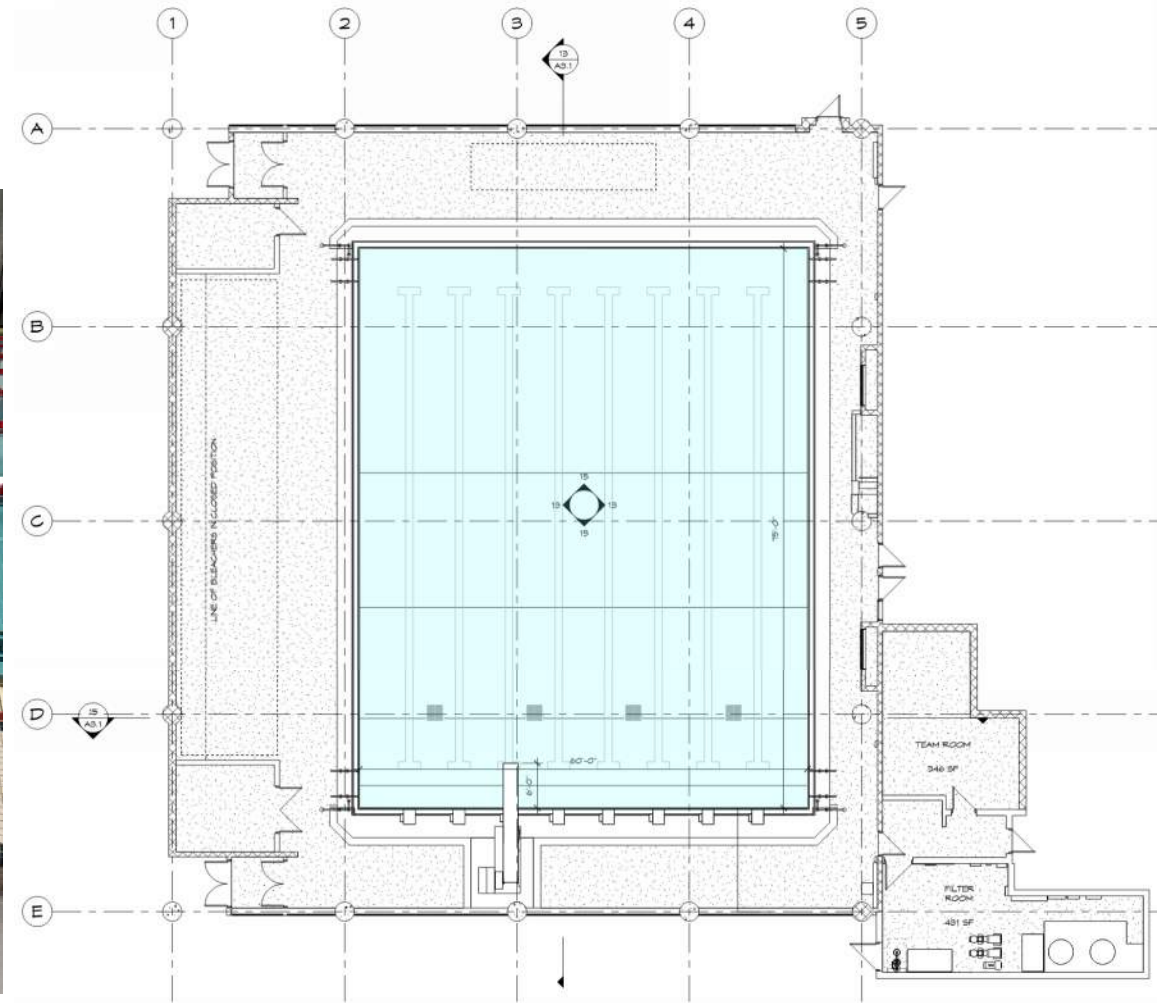
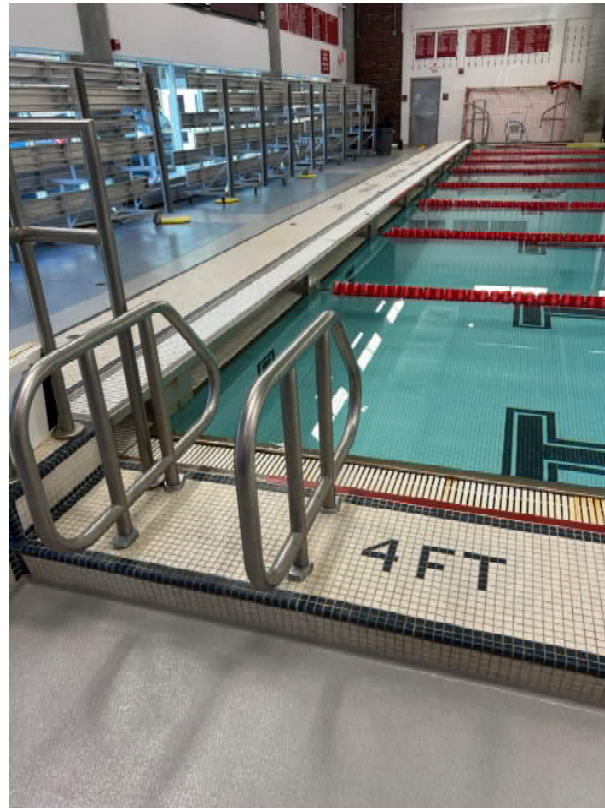
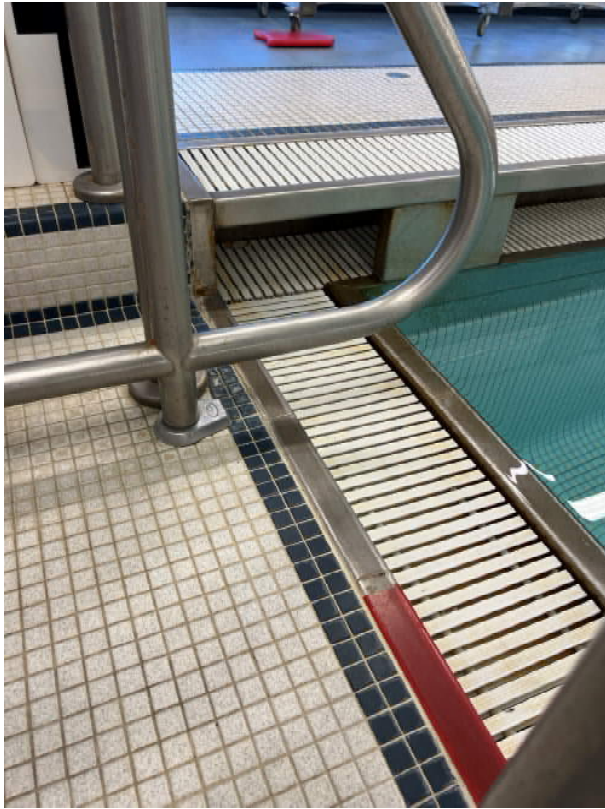
# Greenwich High School Swimming Pool



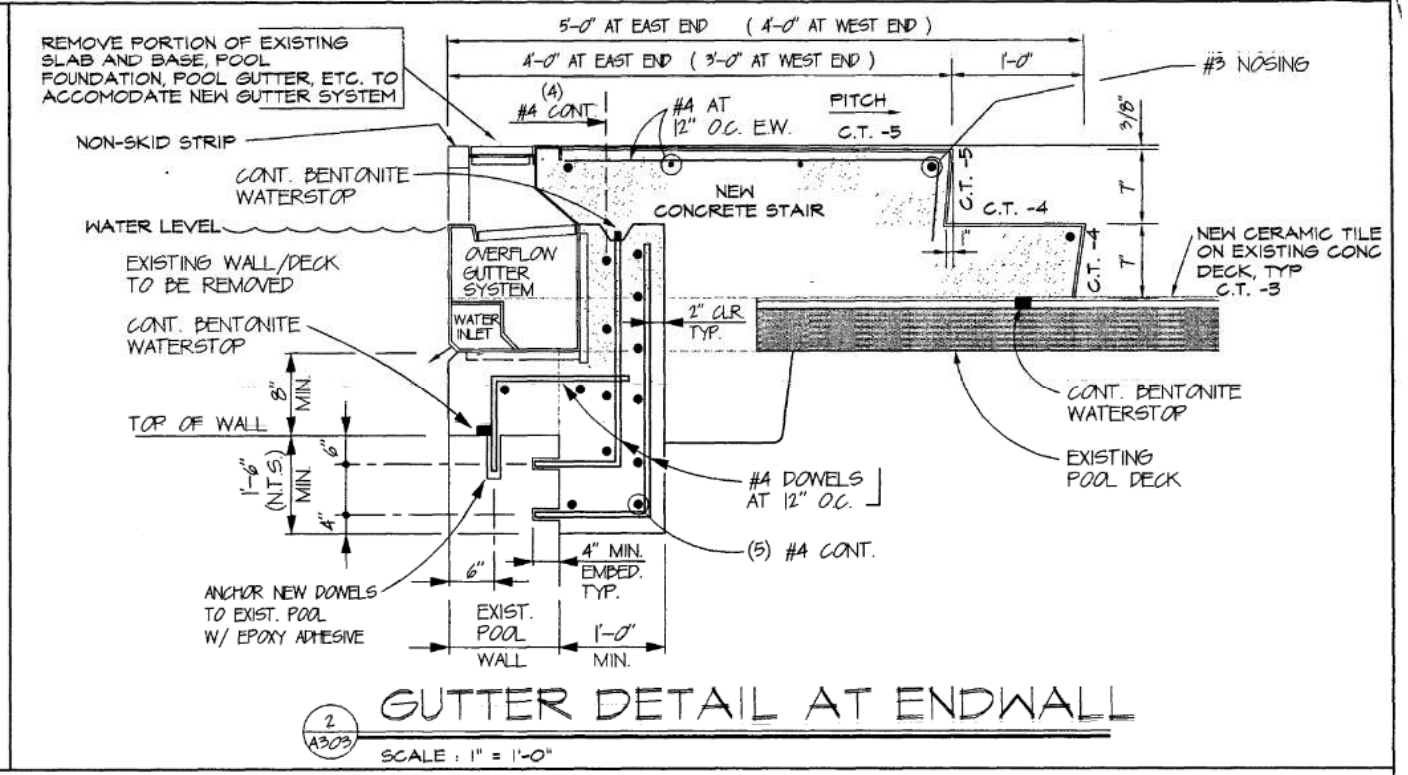
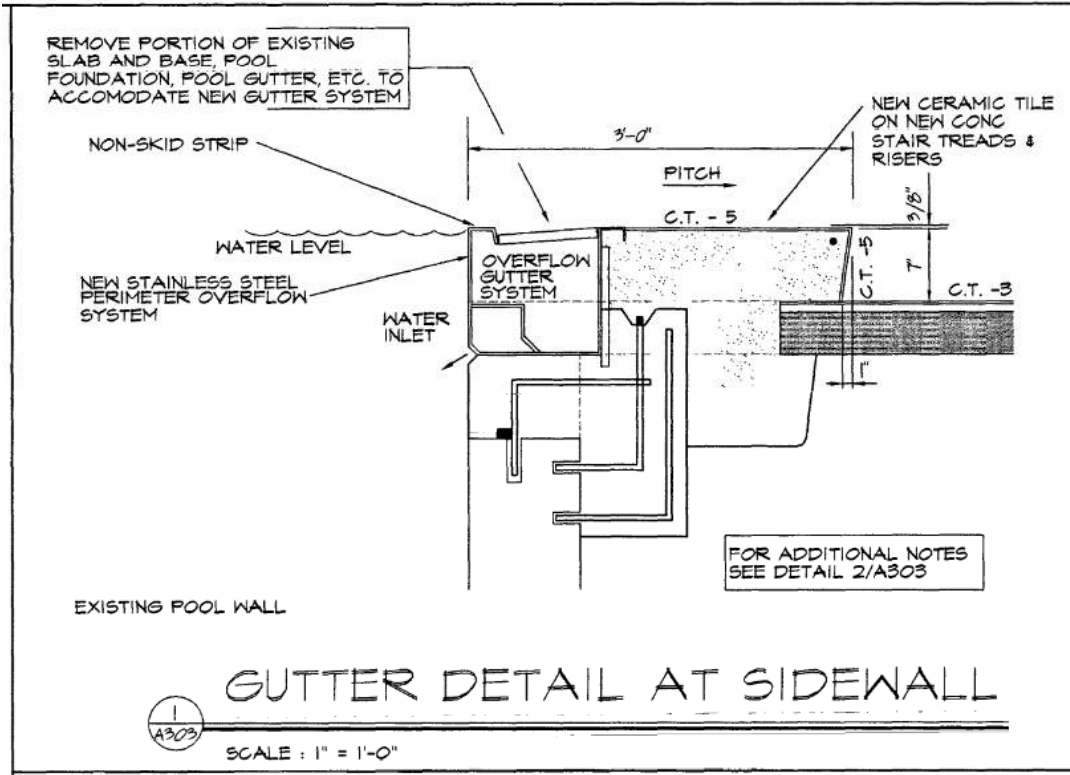
TLBA

BOARD of EDUCATION MEETING - MARCH 20, 2025

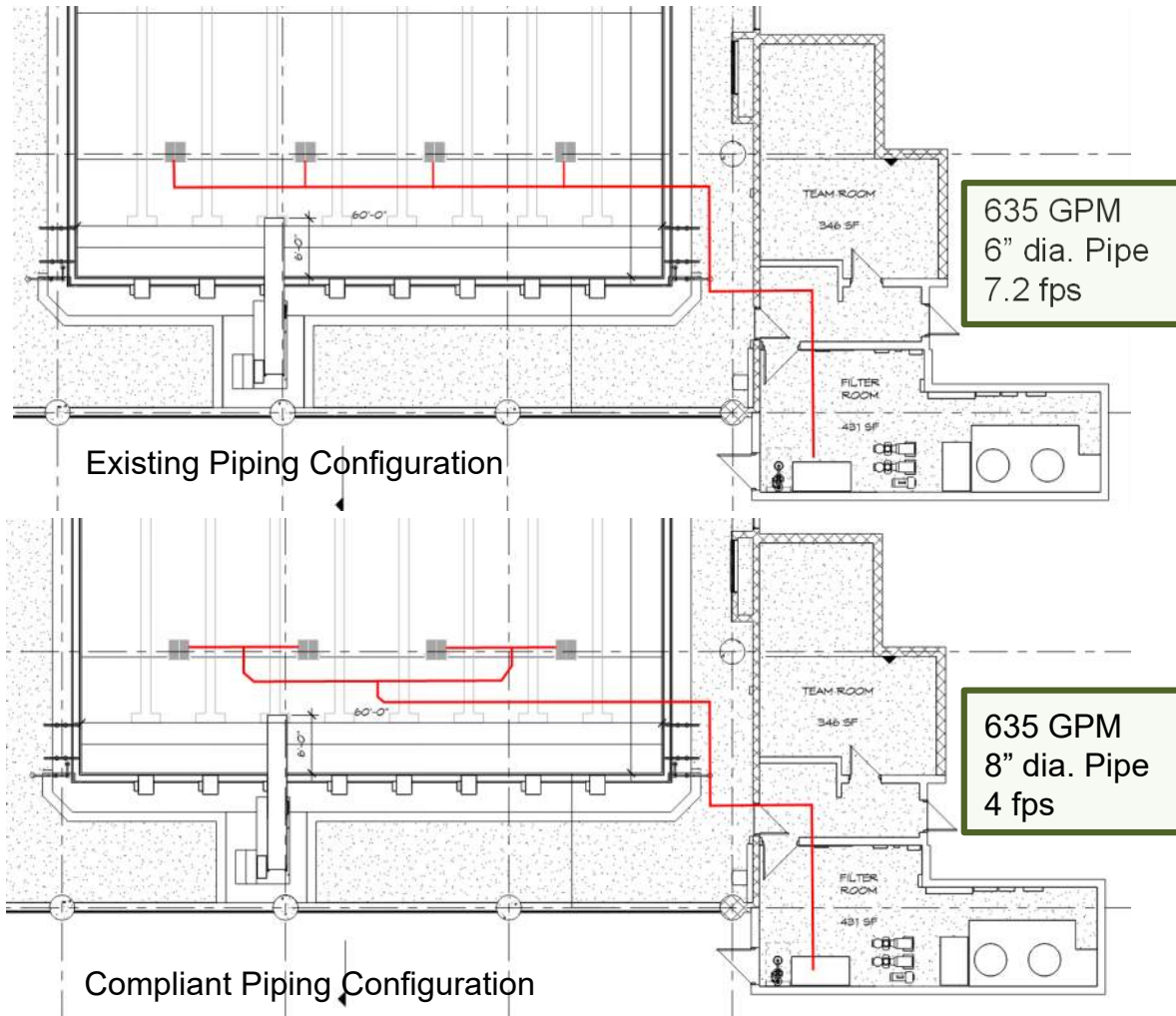
- Reported Leaks at Gutter Line
- Loose, Broken and Missing Tile



*GENERAL CONDITION of POOL SHELL*



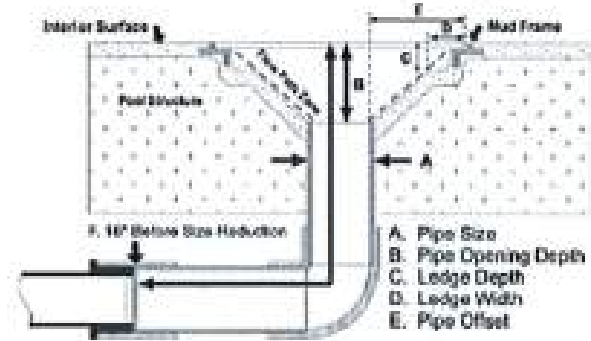
**GENERAL CONDITION of POOL SHELL**



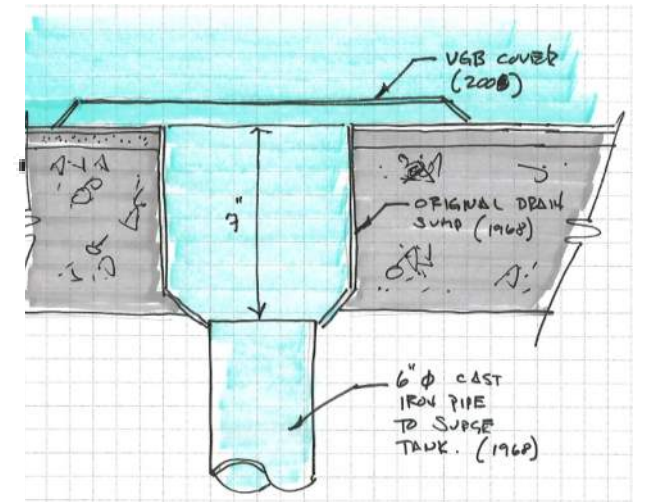
- Covers Have Expired
  - Sumps are Non-Compliant
  - 3 of 4 Pipes are Clogged
  - Pipe Size Too Small
- (DPH Limits velocity in pipe to 6 fps)



**FIGURE 1:**  
SOFA Model Number Key



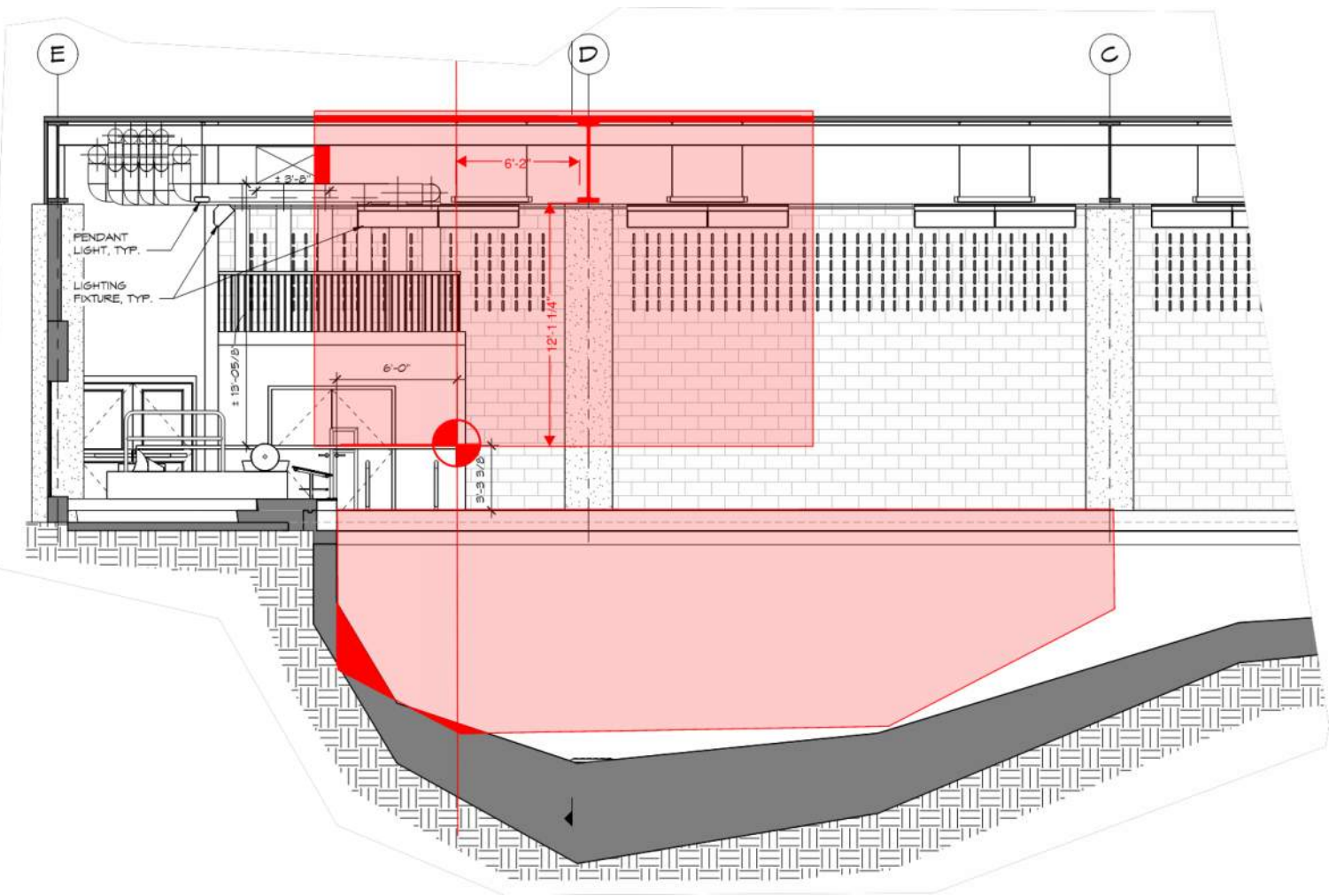
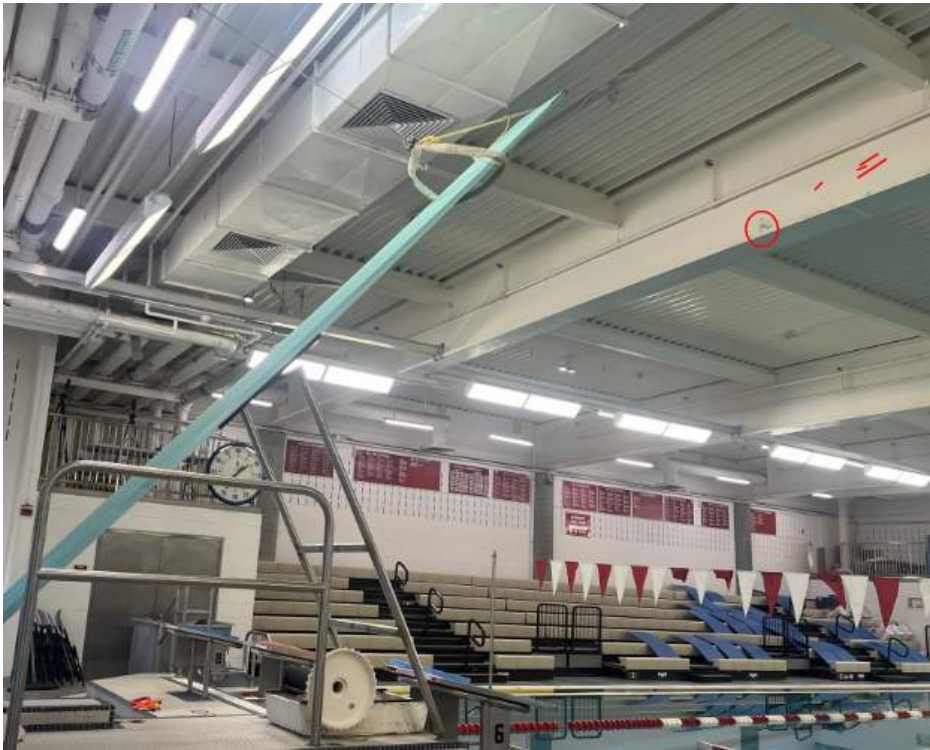
Compliant Sump Configuration



Existing Sump Configuration

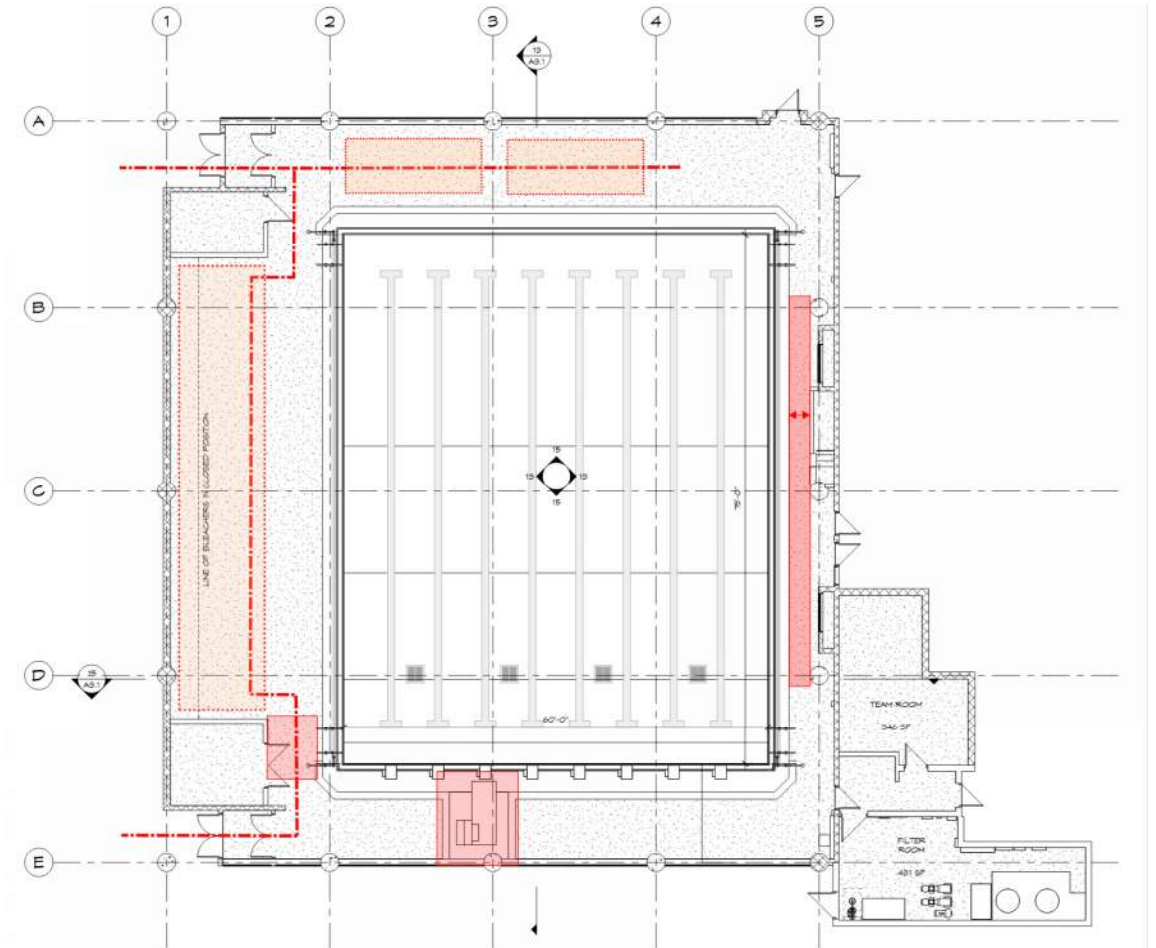
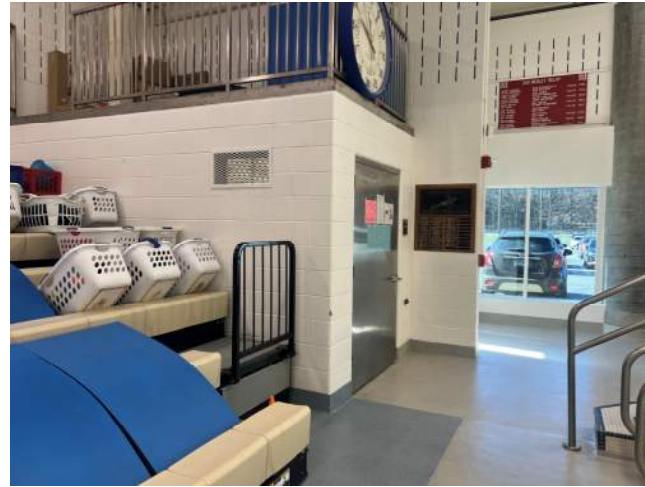
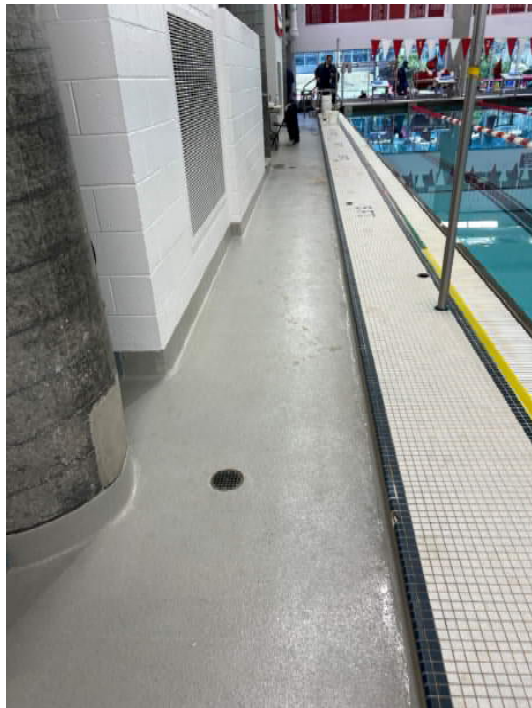
**MAIN DRAINS and PIPNG**

- Overhead Clearance is Not Compliant with Department of Public Health Guidelines
- Diving Hopper is Not Fully Compliant



*DIVING BOARD and CLEARANCES*

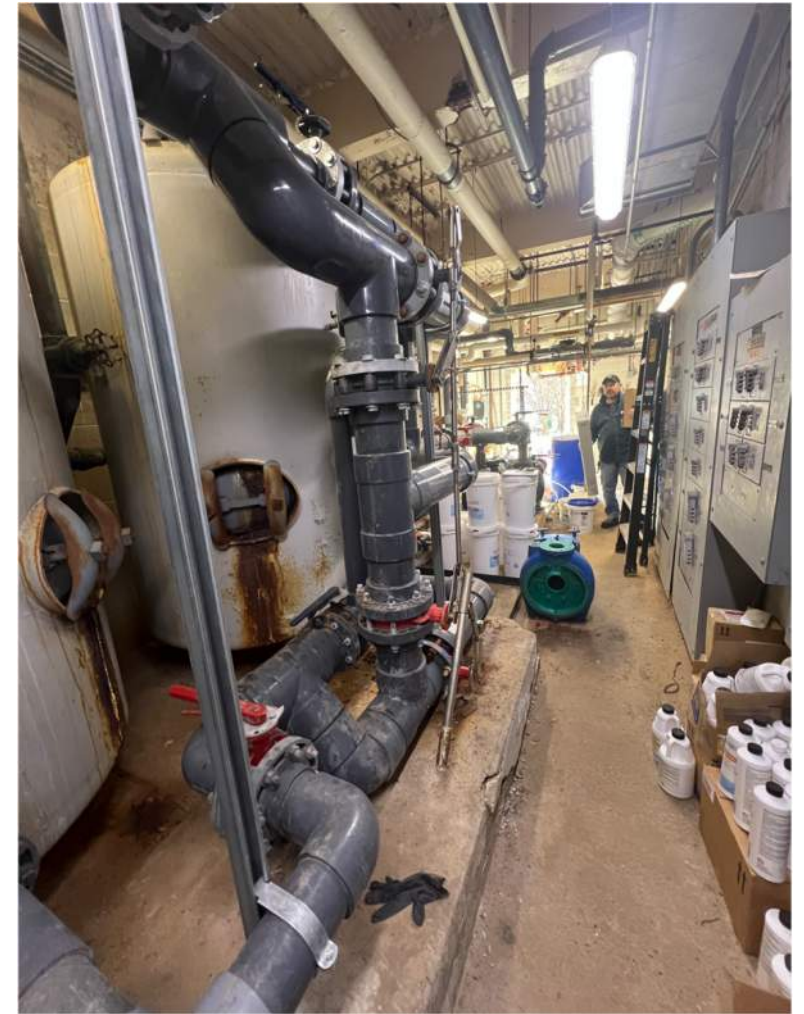
- Narrow Decks
- Spectators on the Pool Decks
- Limited Emergency Access
- 5-Foot Wide Deck Req'd for Full Perimeter of Pool



*POOL DECK and POOL ACCESS*



- Failing Filters
- Proximity to Electrical Panels
- Filter Backwashes to Brook, Not Sanitary Sewer



***RECIRCULATION, FILTRATION and CHEMICAL CONTROL***



## Questions and Answers