



SUMMIT VIEW ELEMENTARY
Traffic Memorandum

Project Number: 1124175

Prepared For: Douglas County
School District

March 2, 2025
Revised:
April 7, 2025

DIBBLE



SUMMIT VIEW ELEMENTARY

Traffic Memorandum

Highlands Ranch, Colorado

Project Number: 1124175

Prepared For: Douglas County School District
Planning and Construction
2808 Highway 85, Building B
Castle Rock, Colorado 80109

March 2, 2025
Revised:
April 7, 2025



Nicholas J Westphal, PE
Project Manager

Dibble & Associates Consulting Engineers, Inc., dba Dibble





Table of Contents

1. EXECUTIVE SUMMARY	2
2. INTRODUCTION.....	3
2.1 Study Purpose and Scope	3
2.2 Study Area.....	3
2.3 School Description.....	4
3. EXISTING CONDITIONS	5
3.1 Site Observation	5
3.2 Roadway Network	5
3.3 Traffic Safety Analysis	8
4. PROJECTED SITE TRAFFIC IMPACTS	9
4.1 Projected Traffic	9
4.2 Mitigation.....	10
5. CONCLUSIONS/RECOMMENDATIONS.....	11

List of Figures

Figure 1 – Vicinity Map	3
Figure 2 – Summit View Bus Service Map	4
Figure 3 – Wildcat Reserve Parkway at Summit View Parkway	6
Figure 4 – Highlands Ranch Parkway at Venneford Ranch Road	7
Figure 5 – Southbound School Zone Indicator	10
Figure 6 – Northbound School Zone Indicator	11

List of Tables

Table 1 – Roadway Characteristics	7
Table 2 – Annual Crash Summary.....	8
Table 3 – School Enrollment	9

Appendices

Appendix A Site Observation Note	A
Appendix B Crash Diagrams and Listings.....	B
Appendix C School Questionnaire	C



1. EXECUTIVE SUMMARY

Douglas County School District is considering options for consolidating schools in Highlands Ranch, Colorado. The Summit View Elementary (Summit View) consolidation option includes having Heritage Elementary (Heritage) consolidate into Summit View Elementary. In addition, removing 6th grade from the elementary schools is being considered, so if the schools are consolidated, the final enrollment may or may not include 6th grade. This Traffic Memorandum reviews existing traffic and provides potential mitigation measures for current traffic and potential increased traffic challenges due to increased enrollment caused by school consolidations.

Summit View has three parking lots. One parking lot lies to the west of the school and is split into two sections. The north section is accessed from Piedmont Drive, while the south portion has an access drive that extends to Summit View Parkway. A parking lot to the south of the building has an access to Summit View Parkway and to the access drive between Summit View Parkway and the west parking lot. Another lot, also with two access points to Summit View Parkway, lies to the east of the school and is also considered the bus loop. School bus service is not provided at Summit View; however, school bus service may be provided for a portion of the Heritage attendance area attending Summit View.

The projected 2028-2029 combined enrollment is 581 students if 6th Grade is retained at the elementary level and 501 students without 6th Grade. These projected combined enrollment numbers are approximately between 35 percent and 55 percent higher than the existing Summit View enrollment.

Consolidation of the schools will increase traffic at Summit View with more vehicles using on-street parking, the school parking lot, and the pick-off/drop-off lanes. This will increase impacts to the surrounding roadways during pick-up and drop-off times. In addition, more vehicles and pedestrians will be traveling across Wildcat Reserve Parkway at unsignalized intersections, potentially leading to safety challenges.

Although historic enrollment levels suggest Summit View could accommodate the increased traffic, more vehicles and pedestrians are expected. To address existing and potential future traffic challenges the following mitigation measures are recommended:

- Coordinate with Douglas County to further review relocating the school zone indicators (signs and flashers) to a location prior to the first access drives into Summit View Elementary for both directions of traffic. The school zone length was reduced in 2009 to encourage better compliance.
- Coordinate with the Douglas County Sherriff's office to increase speed enforcement along Summit View Parkway.

2. INTRODUCTION

2.1 Study Purpose and Scope

The purpose of this Traffic Memorandum is to discuss the existing traffic patterns at Summit View Elementary (Summit View) and potential mitigation measures for current traffic and potential increased traffic due to increased enrollment caused by school consolidations. A potential school consolidation option includes having Heritage Elementary consolidate into Summit View.

The scope of this memorandum includes assessing school driveways, nearby intersections, school parking lots, school drop-off and pick-up locations, traffic flow, bicycle and pedestrian facilities, and general traffic challenges at Summit View.

2.2 Study Area

Summit View Elementary School is located at 10200 Piedmont Drive in the central region of Highlands Ranch. The school has access points on Piedmont Drive, but also has access points along Summit View Parkway. It is important to note that Piedmont Drive and Summit View Parkway do not intersect. The parcel number for the property is 222914100004. A vicinity map showing the school’s location is provided as **Figure 1**.

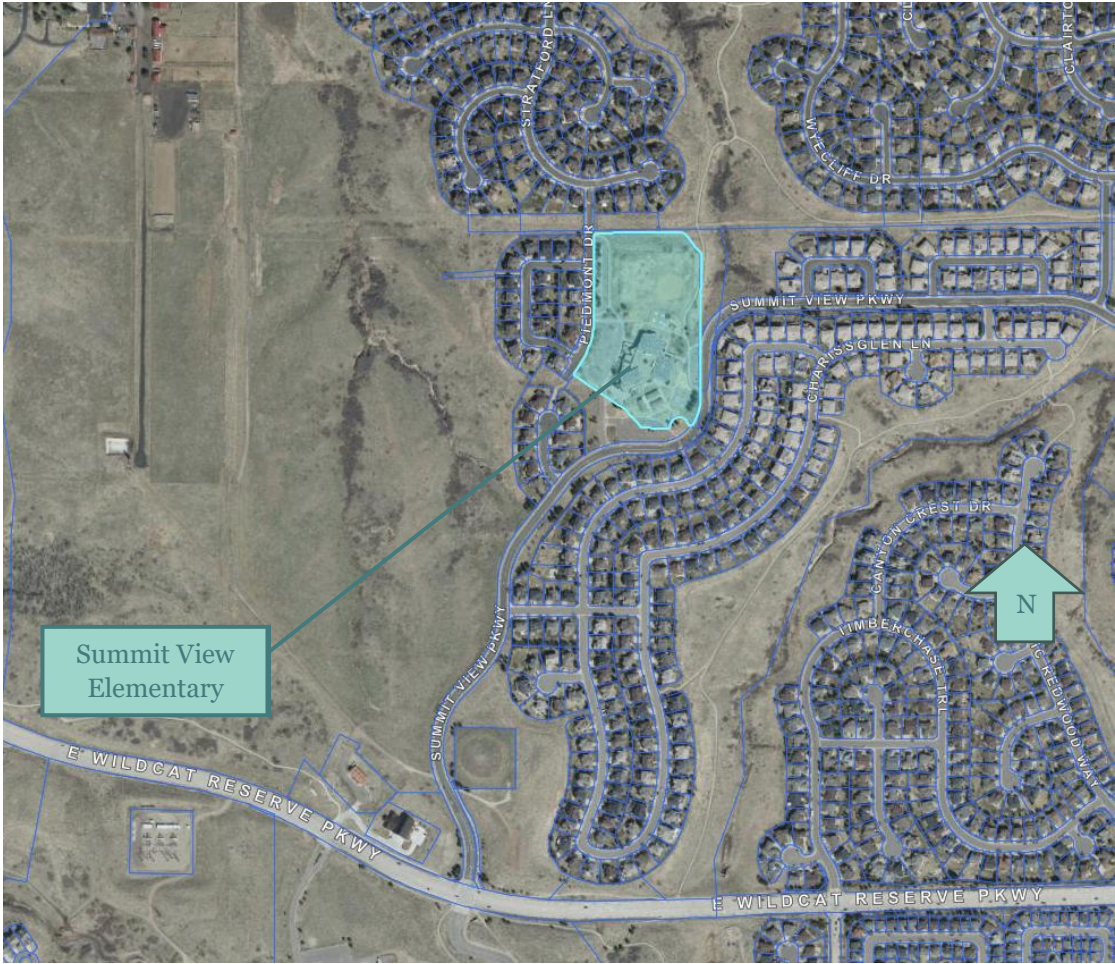


Figure 1 – Vicinity Map

Neighborhood local and collector streets are analyzed for safety challenges, bicycle and pedestrian facilities, parking availability, and queueing lengths. Larger intersections at arterial streets are analyzed for the same items, but also for accident history.

2.3 School Description

Summit View has a start time of 8:30 AM and an end time of 3:30 PM. The school is located in the neighborhood to the northwest of the intersection of Wildcat Reserve Parkway and Fairview Parkway. Summit View has three parking lots. One parking lot lies to the west of the school and is split into two sections. The north section is accessed from Piedmont Drive, while the south portion has an access drive that extends to Summit View Parkway. A parking lot to the south of the building has an access to Summit View Parkway and to the access drive between Summit View Parkway and the west parking lot. Another lot, also with two access points to Summit View Parkway, lies to the east of the school and is also considered the bus loop. There is one pedestrian crosswalk, which aids in the crossing of Summit View Parkway to the south of the school. Summit View has a maximum Capacity of 700 students but the largest enrollment since 2013 is 572 students.

School bus service is provided at Summit View. Douglas County School District’s policy is for bus service to only be provided to elementary students within the school’s attendance boundary, and outside of a designated one-mile waling radius. **Figure 2** depicts Summit View’s local attendance boundary in lavender with the orange circle representing the walking radius. As of November 2024, 59 individuals are eligible to receive bus service, and 36 individuals used the bus service which is a 61 percent rate.

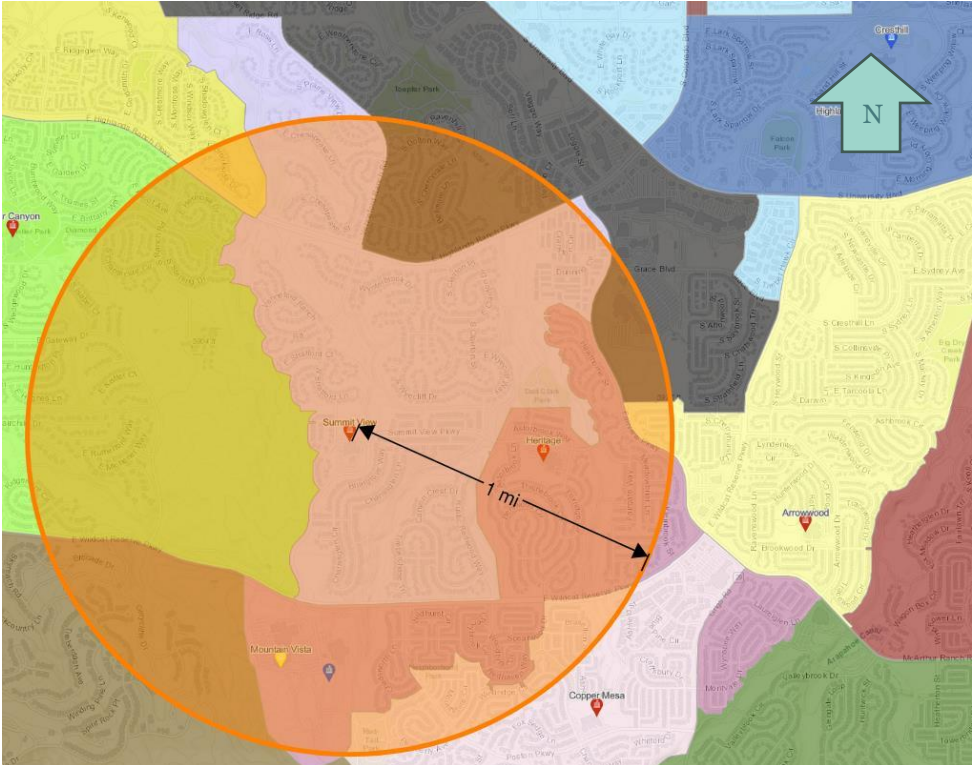


Figure 2 – Summit View Bus Service Map

3. EXISTING CONDITIONS

3.1 Site Observation

A site observation was performed at Summit View on November 15, 2024. Field notes from the site observation are included in **Appendix A**. The morning site observation was conducted from 7:45 AM through 9:15 AM and the afternoon site observation was conducted from 2:45 PM through 4:15 PM. Key observations included:

- Sight visibility challenges when turning onto Summit View Parkway due to curvature of road
- Left turns not allowed temporarily during loading and unloading

3.2 Roadway Network

The Highlands Ranch roadway network is maintained by Douglas County. Summit View is situated within a built-out neighborhood and is surrounded by local and neighborhood collector streets. The main accesses to the neighborhood are from Wildcat Reserve Parkway at Summit View Parkway and Fairview Parkway at Summit View Parkway, with Fairview Parkway being the main arterial closest to the school. Summit View Parkway extends from the school to a signalized intersection at Wildcat Reserve Parkway and an unsignalized intersection at Fairview Parkway.

School zone flashers operate from 8:05 to 8:45 AM and from 3:20 to 4:00PM. Two flashers are situated on Summit View Parkway in either direction from the school, and one is located on Piedmont Drive near Stratford Lane.

Wildcat Reserve Parkway at Summit View Parkway

The intersection of Wildcat Reserve Parkway at Summit View Parkway is a signalized intersection with protected left-turn lanes/phases on both approaches for Wildcat Reserve Parkway and the northbound approach of Summit View Parkway. The southbound approach of Summit View Parkway has permissive and protected lanes/phases for left turns. **Figure 3** shows an aerial of the intersection with the current intersection layout.

Wildcat Reserve Parkway has two through lanes in each direction. The westbound approach has two dedicated left-turn lanes but no dedicated right-turn lane. The eastbound approach has one dedicated left-turn lane and one dedicated right-turn lane. The northbound approach of Summit View Parkway exits the parking lot for Mountain Vista High School and Mountain Ridge Middle School. This approach has one through lane, two dedicated left-turn lanes, and one dedicated right-turn lane. The southbound approach to Summit View Parkway has one through lane, one dedicated right-turn lane, and one dedicated left-turn lane. Bike lanes are present for both directions of Wildcat Reserve Parkway and also on both directions of Summit View Parkway to the north of the intersection.



Figure 3 – Wildcat Reserve Parkway at Summit View Parkway

Highlands Ranch Parkway and Venneford Ranch Road

The intersection of Highlands Ranch Parkway and Venneford Ranch Road is a signalized four-way intersection with permissive left-turn lanes/phases on the approaches for Venneford Ranch Road and protected/permissive lanes/phases on the approaches for Highlands Ranch Parkway. **Figure 4** shows an aerial of the intersection with the current intersection layout.

Highlands Ranch Parkway has three through lanes and one dedicated left-turn lane in each direction. The Venneford Ranch Road approaches each have one through lane, one dedicated right-turn lane, and one dedicated left-turn lane. Bike lanes are present for both directions of Highlands Ranch Parkway and both directions of Venneford Ranch Road, though the bike lanes on Venneford Ranch Road merge with traffic prior to the intersection.



Figure 4 – Highlands Ranch Parkway at Venneford Ranch Road

Roadway Characteristics

General features of the roadways in the vicinity of Summit View are summarized in **Table 1**.

Table 1 – Roadway Characteristics

Roadway	Highlands Ranch Parkway	Wildcat Reserve Parkway	Summit View Parkway
Speed Limit	45 mph	45 mph	30 mph
Number of Through Lanes	4	4	2
Lane Width	12 feet	12 feet	14 feet
Bike Lane Width	5 feet	5 feet	7 feet*
Median	Striped	Striped	None
On-Street Parking	None	None	South side near school

*Bike lane width is measured from stripe to flowline.

3.3 Traffic Safety Analysis

Intersection Crash Analysis

Crash history was reviewed at the intersection of Wildcat Reserve Parkway at Summit View Parkway. Crashes were reviewed for the period between 2019 and 2024. **Table 2** Summarizes the year-by-year crash data for the intersections.

Crash diagrams and a listing of crashes are provided in **Appendix B**.

Wildcat Reserve Parkway at Summit View Parkway

There was a total of 23 crashes at Wildcat Reserve Parkway at Summit View Parkway over the course of the study period. Four of these involved injuries. Of the 23 crashes, 7 involved a left turn, and 4 were at night. One of these accidents involved a 3rd vehicle and none involved a bicycle.

Table 2 – Annual Crash Summary

Year	Wildcat Reserve Parkway & Summit View Parkway
2019	7
2020	2
2021	3
2022	3
2023	3
2024	5

School Safety

Students are picked up and dropped off from three different parking areas around the school. Left turns onto Summit View Parkway are not allowed during drop-off and pick-up times. However, this rule is not always followed. On-street parking is provided on the north side of Summit View Parkway near the school, and on Piedmont Drive. Bike lanes are present for both directions on both Summit View Parkway, but not on any adjacent streets. Crosswalks are present in the parking lot and across Summit View Parkway.

Summit View was provided with a questionnaire to provide any feedback related to traffic and school safety. Responses to the questionnaire are provided in **Appendix C**.

Administration for the school provided the following concerns:

- Inadequate school zone flasher locations
- Vehicles do not follow the right-turn only rule
- Speeding on Summit View Parkway

Summit View administration also provided the drop-off procedures that were sent to parents of children at the school.

Arrival "Soft Start" Reminders:

- Drop off between 8:25 – 8:35am (please make a note of the change)
- Tardy bell rings at 8:35am
- Three doors will be opened for students by a SVE staff member; front door, 1st / 3rd grade, and 5th / 6th grade
- For your child’s safety, DO NOT drop students off earlier as they WILL NOT be supervised
- Students will need to go to BASE if they are dropped off earlier
- Soft start helps the car line go smoothly and allows everyone to arrive on time!

DROP OFF / PICK UP PROCEDURES:

- Please follow these procedures for a safe and timely carpool line to ensure the SAFETY for ALL of our children during pick up and drop off.
- Please stay in your cars. Drive forward and follow the signs to the sidewalks, so that your child can safely exit onto the sidewalks not in the parking lot or street.
- Please do not get out of your car to help get your child in or out. Our Ambassadors and staff are available to assist your children.
- EXIT using right turns ONLY. LEFT TURNS ARE NOT ALLOWED during drop off and pick up. Left turns back up the traffic and delays the carpool lane and makes for unsafe situations.
- SVE Ambassadors are available to help your student into the building and/or to their classrooms. Please stay in your cars and use the lines for drop off and pick up at the sidewalks. If you need to walk your student into the building, please park your car in a designated spot.

4. PROJECTED SITE TRAFFIC IMPACTS

4.1 Projected Traffic

Douglas County School District (DCSD) is considering a potential school consolidation option that would consolidate Heritage Elementary into Summit View. The consolidation option includes having 6th Grade students remain at the elementary school or a second option that move 6th Grade to the separate middle school. **Table 3** provides data on student enrollment for Summit View and Heritage Elementary with and without 6th Grade.

Table 3 – School Enrollment

School	Ideal Capacity per DCSD	Maximum Historic Enrollment	2023-2024 Enrollment Count*	Projected 2028-2029 Enrollment*	2023-2024 Enrollment Count**	Projected 2028-2029 Enrollment**
Summit View	550	572	370	259	320	225
Heritage	506	642	378	322	327	276

*Enrollment values include Pre-School through 6th Grade.

**Enrollment values include Pre-School through 5th Grade. 6th Grade enrollment was assumed to 1/7 of kindergarten through 6th Grade enrollment.

The projected 2028-2029 combined enrollment if Heritage Elementary is consolidated into Summit View is 581 students if 6th Grade is retained at the elementary level and 501 students without 6th Grade. These projected combined enrollment numbers are approximately between 35 percent and 55 percent more than the existing Summit View enrollment.

Since enrollment is not projected to be more than 10 percent of the maximum historic enrollment, traffic data was not collected. However, increased traffic is still expected at Summit View with the consolidated schools. As depicted in **Figure 2**, portions of the Heritage Elementary attendance area are outside of the designated one-mile walking radius. Additionally, DCSD may be providing bus service for current Heritage students who will need to cross an arterial roadway to arrive at Summit View. Therefore, a portion of Heritage Elementary attendance area may be provided bus service to Summit View.

Consolidation of the schools will increase traffic at Summit View with more vehicles using on-street parking, the school parking lot, and the pick-off/drop-off lanes. This will increase impacts to the surrounding roadways during pick-up and drop-off times. In addition, more vehicles and pedestrians will be traveling across Wildcat Reserve Parkway at unsignalized intersections, potentially leading to safety challenges.

4.2 Mitigation

Based on site observations and feedback from the Summit View Administration, Summit View faces the following challenges:

- School zone signs and flashers not placed in the ideal location
- Excessive speeds along Summit View Parkway, especially from traffic coming from Mountain Vista High School
- Vehicles not following the no left-turn signs during pick-up and drop-off

The southbound school zone indicator is placed south of the start of the school property and south of the bus loop where students and vehicles enter and exit as shown in **Figure 5**. The northbound school zone indicator is also placed past the start of the school property and past one of the school accesses as shown in **Figure 6**. Relocating the school zone indicators further north and south prior to the school property may reduce the high vehicle speeds. Douglas County stated that the school zone was shortened in 2009 to increase compliance with the school zone, so any modifications to the school zone length should be agreed to by Douglas County. In addition to the relocation, DCSD should work with the Douglas County Sheriff's Office to provide additional enforcement along Summit View Parkway.



Figure 5 – Southbound School Zone Indicator



Figure 6 – Northbound School Zone Indicator

5. CONCLUSIONS/RECOMMENDATIONS

This traffic memorandum addresses existing traffic patterns and potential traffic challenges at Summit View Elementary School, while considering the anticipated increase in traffic due to the possible consolidation with Heritage Elementary. Two options are being considered if schools are consolidated: one maintaining 6th grade at the elementary school and one moving 6th grade to the middle school.

Traffic will be increased with the additional enrollment, but additional bus service will be offered, limiting the impact of the increased enrollment. Although historic enrollment levels suggest Summit View could accommodate the increased traffic, more vehicles and pedestrians are expected. To address existing and potential future traffic challenges the following mitigation measures are recommended:

- Coordinate with Douglas County to further review relocating the school zone indicators (signs and flashers) to a location prior to the first access drives into Summit View Elementary for both directions of traffic. The school zone length was reduced in 2009 to encourage better compliance.
- Coordinate with the Douglas County Sheriff's office to increase speed enforcement along Summit View Parkway.

**Minor grammatical changes were made on April 7, 2025 to provide additional clarity.*



Appendix A Site Observation Note

TRAFFIC OBSERVATION REPORT

Project Name	DCSD Highland Ranch TIS	Project No.	1124175					
Observer	Greg Nguyen							
Location								
Time	7:45 AM	AM / PM						
		DATE	11/15/2024					
		M	T	W	Th	F	S	S

Queueing Data

Start Time: 7:50 AM

End Time: 8:32 AM

Maximum Queueing Length:

Approximately 350', measured from the front door of the school along the storage lane towards Summit View Parkway

Total Storage Length Available:

Approximately 450' is available as storage to the parking lot in front of the main door of the school. Approximately 200' is available as storage to the parking lot beside the aforementioned parking lot, coming off of Piedmont Drive. The south parking lot has approximately 300' available as storage.

Comments:

Four different locations are used to drop off students at the school, the main parking lot to the west of the school beside the front doors, the detached and adjacent lot serving Piedmont, the south lot immediately off of Summit View Parkway, and the bus loop to the east of the school, which also has some parking stalls. The school has a soft start at 3:20, which lessens queues as well to the school as parents are able to depart earlier.

On-Street Parking Locations and Availability

Comments:

Parking is available in the four lots located to the East, South, West, and Northwest of the school. The main parking lot west of the school has 30 stalls, with two additional ADA stalls. The adjacent northwest lot has 21 stalls, with one additional ADA stall. The south lot has 50 parking stalls with an additional three ADA stalls, and the east lot in the bus loop has 12 stalls available. Two additional, utility staff only stalls are available besides the school dumpsters to the south of the school. On street parking is available in some locations along Summit View Parkway, but approaches to the entrances and exits of the parking lot are stiped off to prevent blind spots. On street parking is also available on Piedmont Drive. Some high school students that attend Mountain Vista who also live on Piedmont and the neighborhood to the north of the school are known to park at the main lot of the school, as the drive otherwise is much more circuitous from that neighborhood to the high school.

Crosswalk Locations and Usage

Comments:

Three crosswalks are available around the school: One crossing Summit View Parkway to the south parking lot entrance, once across a coned-off entrance/exit to the south parking lot, and one more crossing the entrance to the west parking lot. The sidewalk along the west edge of the south lot that connects to the main entrance to the school does not have curb ramps at some crossings and does not have a crosswalk at all crossings. Cross pans used as crosswalks can be a slip hazard in wet and cold conditions.

Roadway Characteristics

Speed Limit(s) and Location(s):

Summit View Elementary School is located along Summit View Parkway where the road transitions from traveling westbound and eastbound to northbound and southbound. Summit View Parkway is ordinarily a 30 MPH road, and in the school zone, it is a 15 MPH road. Piedmont is a 25 MPH road.

Signage:

Parking lots and the bus loops are signed for one way traffic, with cones deployed at the south parking lot to establish one way flow through the school. Red curb around the school denotes fire lanes. Bus loops are signed as bus only traffic. Summit View Parkway is marked with striped locations denoting where street parking is not allowed. Right turns are not allowed out of the east bus loop, as they cross the double yellow line, but this is not always obeyed by parents who must turn right to enter the bus loop.

Bike Lanes:

Bikes lanes are present along Summit View Parkway in both directions.

Other Comments:

Summit View Parkway is shared by three other nearby schools, which can cause congestion when peak usage times coincide with one another, though this was not observed at this time.

Sight Visibility Challenges

Comments:

Turns out of Summit View Parkway from any parking lot at the school can present some blind spots despite street marking denoting no parking zones for street parking, due to the curvature of the road. Illegal right turns out of the west bus loop suffer the harshest blind spot form northbound traffic on Summit View because of the curve in the

Congestion Areas

Comments:

Congestion was noted in the main parking lot from the queue and exiting. Congestion was also noted at the south parking lot exit as cars wait to turn out in either direction onto Summit View Parkway.

General Traffic Observations

Comments:

Lot exits out of Summit View are right turn only, but this rule is not always obeyed. 5th grade ambassadors are used with supervision of staff to usher children out of the storage lane and to the sidewalk towards the schools, which minimizes stalling in the storage lanes.

TRAFFIC OBSERVATION REPORT

Project Name	DCSD Highland Ranch TIS	Project No.	1124175					
Observer	Greg Nguyen							
Location								
Time	2:45 PM	AM / PM						
		DATE	11/12/2024					
		M	T	W	Th	F	S	S

Queueing Data

Start Time: 2:50 PM

End Time: 3:37 PM

Maximum Queueing Length:

Approximately 350 feet at the southern lot backing up onto Summit View Parkway.

Total Storage Length Available:

Approximately 450' is available as storage to the parking lot in front of the main door of the school. Approximately 200' is available as storage to the parking lot beside the aforementioned parking lot, coming off of Piedmond Drive. The south parking lot has approximately 300' available as storage.

Comments:

Plowed snow at the south lot blocks one parking stall, and blocks one stall at the west lot and at the smaller bus loop to the east of the school. A 13 car queue was also noted at the eastern bus loop for student pickup. At all queues, students walk down along sidewalk to queued cars to load, causing queue to break up faster.

On-Street Parking Locations and Availability

Comments:

Parking is available in the four lots located to the East, South, West, and Northwest of the school. The main parking lot west of the school has 30 stalls, with two additional ADA stalls. The adjacent northwest lot has 21 stalls, with one additional ADA stall. The south lot has 50 parking stalls with an additional three ADA stalls, and the east lot in the bus loop has 12 stalls available. The backmost row of stalls in the south lot are signed for school staff only. Two additional, utility staff only stalls are available besides the school dumpsters to the south of the school. On street parking is available in some locations along Summit View Parkway, but approaches to the entrances and exits of the parking lot are stiped off to prevent blind spots. On street parking is also available on Piedmont Drive. Some high school students that attend Mountain Vista who also live on Piedmont and the neighborhood to the north of the school are known to park at the main lot of the school, as the drive otherwise is much more circuitous from that neighborhood to the high school. Parents temporarily park/idle in both bus loops for loading, and park in the closed off portion created by traffic cones in the south lot.

Crosswalk Locations and Usage

Comments:

Three crosswalks are available around the school: One crossing Summit View Parkway to the south parking lot entrance, once across a coned-off entrance/exit to the south parking lot, and one more crossing the entrance to the west parking lot. The sidewalk along the west edge of the south lot that connects to the main entrance to the school does not have curb ramps at some crossings and does not have a crosswalk at all crossings. Cross pans used as crosswalks can be a slip hazard in wet and cold conditions. Crosswalks and sidewalks on the west side of the school are used by pedestrian traffic from the nearby high school and middle school. Pedestrian traffic at the entrance lane to the west parking lot cuts through the grass to Piedmont.

Roadway Characteristics

Speed Limit(s) and Location(s):

Summit View Elementary School is located along Summit View Parkway where the road transitions from traveling westbound and eastbound to northbound and southbound. Summit View Parkway is ordinarily a 30 MPH road, and in the school zone, it is a 15 MPH road. Piedmont is a 25 MPH road. School zone lights are on from 3:20 to 4:00 PM.

Signage:

Parking lots and the bus loops are signed for one way traffic, with cones deployed at the south parking lot to establish one way flow through the school. Red curb around the school denotes fire lanes. Bus loops are signed as bus only traffic. Summit View Parkway is marked with striped locations denoting where street parking is not allowed. Right turns are not allowed out of the east bus loop, as they cross the double yellow line, but this is not always obeyed by parents who must turn right to enter the bus loop. "Right turn only during arrival and dismissal"

Bike Lanes:

Other Comments:

Sight Visibility Challenges

Comments:

Turns out of Summit View Parkway from any parking lot at the school can present some blind spots despite street marking denoting no parking zones for street parking, due to the curvature of the road. Illegal right turns out of the west bus loop suffer the harshest blind spot from northbound traffic on Summit View because of the curve in the

Congestion Areas

Comments:

Congestion was noted in the main parking lot from the queue and exiting. Congestion was also noted at the south parking lot exit as cars wait to turn out in either direction onto Summit View Parkway.

General Traffic Observations

Comments:

Lot exits out of Summit View are right turn only, but this rule is not always obeyed. Illegal U-turns were noted at the small bus loop on Summit View Parkway. The school's ADA bus arrives at the small bus loop on Summit View Parkway. Other, larger buses use the bus loop on Piedmont, or use the south lot. Cars speeding down Summit View Parkway is a concern for staff.

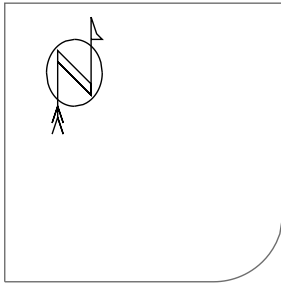


Appendix B Crash Diagrams and Listings

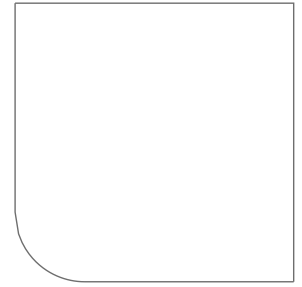
WILDCAT RESERVE PKWY & SUMMIT VIEW PKWY 2019 - 2024

23 Crashes

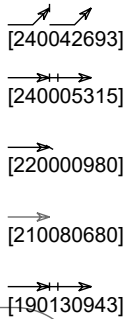
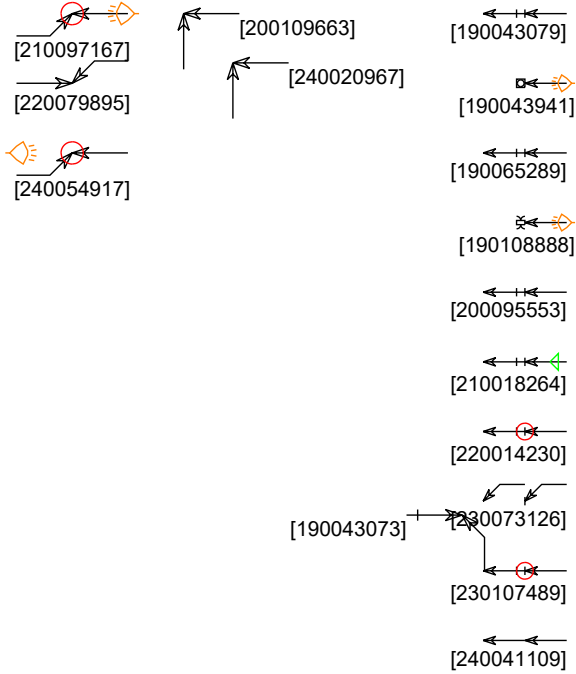
Clear



Summit View



Wildcat Reserve



- ← Straight
- ←+ Stopped
- ← Unknown
- ↔ Backing
- ↔ Overtaking
- ↔ Sideswipe

- ▭ Parked
- ↔ Weaving
- ↔ Changing Ln
- ↔ Right turn
- ↔ Left turn
- ↔ U-turn

- × Pedestrian
- ⊗ Bicycle
- Injury
- Fatality
- 🔦 Nighttime
- 🚫 DUI

- ◀ 3rd Vehicle
- ←-M- Motorcycle
- ←-O- Overturn

- Fixed objects:**
- General
 - ⊠ Animal
 - ⊠ Public Obj
 - ⊠ Private Obj

WILDCAT RESERVE PKWY & SUMMIT VIEW PKWY

2019 - 2024

23 Crashes

Clear

Casetrackingid	Accidenttime	Accidentdate	Primarystreet	Crossstreet	Onroadaddress	Numberinjured	Numberkilled	Harmfuleventl
190043073	2:54 pm	4/10/2019	WILDCAT RESERVE PKWY	SUMMIT VIEW PKWY		0	0	Front to Side
190043079	3:19 pm	4/10/2019	WILDCAT RESERVE PKWY	SUMMIT VIEW PKWY		0	0	Front to Rear
190043941	6:46 am	4/13/2019	WILDCAT RESERVE PKWY	SUMMIT VIEW PKWY		0	0	Light Pole/Utility Pole
190056527	2:00 pm	5/13/2019	SUMMIT VIEW PKWY	WILDCAT RESERVE PKWY		0	0	Front to Rear
190065289	3:51 pm	6/4/2019	WILDCAT RESERVE PKWY	SUMMIT VIEW PKWY		0	0	Front to Rear
190108888	12:35 am	9/27/2019	WILDCAT RESERVE PKWY	SUMMIT VIEW PKWY		0	0	Wild Animal
190130943	3:08 pm	11/22/2019	WILDCAT RESERVE PKWY	SUMMIT VIEW PKWY		0	0	Front to Rear
200095553	3:05 pm	10/20/2020	WILDCAT RESERVE PKWY	SUMMIT VIEW PKWY		0	0	Front to Rear
200109663	4:14 pm	12/10/2020	WILDCAT RESERVE PKWY	SUMMIT VIEW PKWY		0	0	Front to Side
210018264	2:50 pm	3/4/2021	WILDCAT RESERVE PKWY	SUMMIT VIEW PKWY		0	0	Front to Rear
210080680	3:02 pm	10/5/2021	SUMMIT VIEW PKWY	WILDCAT RESERVE PKWY		0	0	Front to Side
210097167	5:30 pm	12/5/2021	SUMMIT VIEW PKWY	WILDCAT RESERVE PKWY		1	0	Front to Side
220000980	11:22 am	1/5/2022	WILDCAT RESERVE PKWY	SUMMIT VIEW PKWY		0	0	Front to Rear
220014230	11:56 am	2/23/2022	WILDCAT RESERVE PKWY	SUMMIT VIEW PKWY		0	0	Front to Rear
220079895	12:07 pm	10/6/2022	WILDCAT RESERVE PKWY	SUMMIT VIEW PKWY		0	0	Front to Side
230056962	8:16 pm	7/3/2023	WILDCAT RESERVE PKWY	SUMMIT VIEW PKWY		0	0	Front to Side
230073126	7:35 am	8/23/2023	WILDCAT RESERVE PKWY	SUMMIT VIEW PKWY		0	0	Front to Rear
230107489	3:00 pm	12/17/2023	WILDCAT RESERVE PKWY	SUMMIT VIEW PKWY		2	0	Front to Rear
240005315	2:58 pm	1/17/2024	WILDCAT RESERVE PKWY	SUMMIT VIEW PKWY		0	0	Front to Rear
240020967	3:40 pm	3/2/2024	WILDCAT RESERVE PKWY	SUMMIT VIEW PKWY		0	0	Front to Side
240041109	3:13 pm	5/3/2024	WILDCAT RESERVE PKWY	SUMMIT VIEW PKWY		0	0	Front to Front
240042693	3:02 pm	5/8/2024	WILDCAT RESERVE PKWY	SUMMIT VIEW PKWY		0	0	Front to Rear
240054917	10:14 pm	6/12/2024	WILDCAT RESERVE PKWY	SUMMIT VIEW PKWY		0	0	Front to Side



Appendix C School Questionnaire

Review: DCSD Traffic and Pedestrian Safety Questionnaire

Respondent

11 Anonymous

26:28

Time to complete

1. What school do you represent?

Score / 0 pts

Summit View Elementary

2. Please provide your name.

Score / 0 pts

George Boser

3. Please provide your email.

Score / 0 pts

george.boser@dcsdk12.org

4. Please provide feedback on crosswalks. Are crosswalks provided in adequate locations? Do families in general abide by crosswalk locations? Are additional crosswalk locations desired?

Score / 0 pts

I don't believe we need additional crosswalks. We have several crosswalks connecting neighborhoods around our school. One is monitored before and after school by a staff member. The location of this crosswalk is by the parking lot near the mobiles crossing Summit View Parkway and leads to Briargrove Way. We also have a crosswalk from our main parking lot to the Piedmont CT and Dr neighborhood.

5. Please provide feedback on pickup/drop-off. Where are your schools pickup and drop-off locations? Is there adequate length or do vehicle queues extend on to public roadways?

Score / 0 pts

Pickup/drop-off goes very smoothly in my opinion. Traffic flow includes two loops near the front of the school and one loop back by the parking area in the mobiles. Cars do start lining up on Summit View Parkway, but with our 8:25-8:35 soft start, parents seem to have plenty of time to drop of their students. The same can be said for the end of the day. The dismissal bell rings at 3:30 and we are usually heading in from duty by 3:45 at the latest.

6. If available, can you provide your school's written pickup and drop-off procedures? Please send to nick.westphal@dibblecorp.com. Score / 0 pts

Arrival "Soft Start" Reminders: Drop off between 8:25 – 8:35am (please make a note of the change) Tardy bell rings at 8:35am Three doors will be opened for students by a SVE staff member; front door, 1st / 3rd grade, and 5th / 6th grade For your child's safety, DO NOT drop students off earlier as they WILL NOT be supervised Students will need to go to BASE if they are dropped off earlier Soft start helps the car line go smoothly and allows everyone to arrive on time! DROP OFF / PICK UP PROCEDURES: Please follow these procedures for a safe and timely carpool line to ensure the SAFETY for ALL of our children during pick up and drop off. - Please stay in your cars. Drive forward and follow the signs to the sidewalks, so that your child can safely exit onto the sidewalks not in the parking lot or street. - Please do not get out of your car to help get your child in or out. Our Ambassadors and staff are available to assist your children. - EXIT using right turns ONLY. LEFT TURNS ARE NOT ALLOWED during drop off and pick up. Left turns back up the traffic and delays the carpool lane and makes for unsafe situations. - SVE Ambassadors are available to help your student into the building and/or to their classrooms. Please stay in your cars and use the lines for drop off and pick up at the sidewalks. If you need to walk your student into the building, please park your car in a designated spot.

7. Please provide feedback on parking lot safety. Is there an adequate number of parking spaces? Are there any sight visibility challenges when exiting a parking lot (e.g. parked vehicles blocking views)? If so, where? Score / 0 pts

I feel we do have adequate parking. Even when we were at 512 students when I started in 2010, I don't recall parking being an issue. With that said, it can get tricky parking for evening events, but parents also walk.

8. Please provide feedback on roadway safety. Do vehicles in general follow traffic laws such as speed limits, stop signs, no parking zones, etc.? Score / 0 pts

The lights (or lack there of) on Summit View Parkway indicating a school zone seem inadequate and not positioned in high visibility areas. We have inquired about this in the past, but this has not resulted in any changes. There are also times when high school students drive well beyond the speed limit on Summit View Parkway. Parent do not follow the right turn only signs during drop off and pick up even when I am standing at these signs directing traffic.

9. Does your school have a designated bus drop-off area? Are there any conflicts between buses and other vehicles? Score / 0 pts

Yes. We have a bus loop on the northwest corner of our property off of Piedmont Drive. We have had parents park in this area, but with only one 1 bus at this time, we haven't had any recent issues.

10. Please provide any general information related to vehicle and pedestrian safety at or around your school that you would like to share. Score / 0 pts

Our biggest and most consistent concern would be the lack of lights indicating a school zone and the speeding on Summit View Parkway near school.