



STONE MOUNTAIN ELEMENTARY
Traffic Memorandum

Project Number: 1124175

Prepared For: Douglas County
School District

March 2, 2025



STONE MOUNTAIN ELEMENTARY

Traffic Memorandum

Highlands Ranch, Colorado

Project Number: 1124175

Prepared For: Douglas County School District
Planning and Construction
2808 Highway 85, Building B
Castle Rock, Colorado 80109

March 2, 2025



Nicholas J Westphal, PE
Project Manager

Dibble & Associates Consulting Engineers, Inc., dba Dibble





Table of Contents

1. EXECUTIVE SUMMARY	2
2. INTRODUCTION.....	3
2.1 Study Purpose and Scope	3
2.2 Study Area.....	3
2.3 School Description.....	4
3. EXISTING CONDITIONS	5
3.1 Site Observation	5
3.2 Roadway Network	5
3.3 Traffic Safety Analysis	8
4. PROJECTED SITE TRAFFIC IMPACTS	9
4.1 Projected Traffic	9
4.2 Mitigation.....	9
5. CONCLUSIONS/RECOMMENDATIONS.....	10

List of Figures

Figure 1 – Vicinity Map	3
Figure 2 – Stone Mountain Bus Service Map	4
Figure 3 – Wildcat Reserve Parkway at Stone Mountain Drive/Kingfisher Avenue	6
Figure 4 – Wildcat Reserve Parkway at Royal Eagle Road/Weathersfield Way.....	7
Figure 5 – Stone Mountain Recommended Mitigation.....	10

List of Tables

Table 1 – Roadway Characteristics	7
Table 2 – Annual Crash Summary.....	8
Table 3 – School Enrollment	9

Appendices

Appendix A Site Observation Note	A
Appendix B Crash Diagrams and Listings.....	B

1. EXECUTIVE SUMMARY

Douglas County School District is considering options for consolidating schools in Highlands Ranch, Colorado. The Stone Mountain Elementary (Stone Mountain) consolidation option includes having Saddle Ranch Elementary (Saddle Ranch) consolidate into Stone Mountain Elementary. In addition, removing 6th grade from the elementary schools is being considered, so if the schools are consolidated, the final enrollment may or may not include 6th grade. This Traffic Memorandum reviews existing traffic and provides potential mitigation measures for current traffic and potential increased traffic challenges due to increased enrollment caused by school consolidations.

Stone Mountain has a parking area on the south side of the building, which is connected to a two-lane pick-up and drop-off access drive. There is also another drop-off and pick-up drive on the west side of the building in the school bus loop. School bus service is provided at Stone Mountain and additional school bus service may be provided for the Saddle Ranch attendance area attending Stone Mountain.

The projected 2028-2029 combined enrollment is 648 students if 6th Grade is retained at the elementary level and 563 students without 6th Grade. These projected combined enrollment numbers are approximately between 15 percent and 35 percent higher than the existing Saddle Ranch enrollment.

Consolidation of the schools will increase traffic at Stone Mountain with more vehicles using on-street parking, the school parking lot, and the pick-off/drop-off lanes. This will increase impacts to the surrounding roadways during pick-up and drop-off times. In addition, more vehicles and pedestrians will be traveling across Wildcat Reserve Parkway at unsignalized intersections, potentially leading to safety challenges.

Although historic enrollment levels suggest Stone Mountain could accommodate the increased traffic, more vehicles and pedestrians are expected. To address existing and potential future traffic challenges the following mitigation measures are recommended:

- Enact a school policy that prohibits vehicles from parking on Southbound Weatherford Way, north/east of the Abbotswood Court intersection during pick-up and drop-off times. As noted by Douglas County, this would need to be implemented by a School Resource Officer on a temporary basis during drop-off and/or pick-up times.
- Partner with Douglas County to create curb extensions on Weathersfield Way at mid-block pedestrian crossing locations to reduce the crossing distance and help improve sight lines to pedestrians prior to entering the roadway and promote reduced vehicle speeds.
- Monitor the intersections of Wildcat Reserve Parkway at Royal Eagle Road/Weathersfield Way and Wildcat Reserve Parkway at Kingfisher Avenue/Stone Mountain Drive for increased traffic safety concerns. If increased vehicle and pedestrian traffic causes safety concerns, additional mitigation measures may be required. No improvements are warranted at this time. A signal warrant analysis was performed by Douglas County at Wildcat Reserve Parkway and Royal Eagle Road in 2022. A traffic signal was not warranted or recommended at that location based on the 2022 warrant analysis.
- Partner with Highlands Ranch Metro District to utilize Pronghorn Park as an additional parking area for student pickup.

2. INTRODUCTION

2.1 Study Purpose and Scope

The purpose of this Traffic Memorandum is to discuss the existing traffic patterns at Stone Mountain Elementary (Stone Mountain) and potential mitigation measures for current traffic and potential increased traffic due to increased enrollment caused by school consolidations. A potential school consolidation option includes having Saddle Ranch Elementary consolidate into Stone Canyon.

The scope of this memorandum includes assessing school driveways, nearby intersections, school parking lots, school drop-off and pick-up locations, traffic flow, bicycle and pedestrian facilities, and general traffic challenges at Stone Mountain.

2.2 Study Area

Stone Mountain Elementary School is located at 10625 Weathersfield Way in the western region of Highlands Ranch. This is near the intersection of Weathersfield Way and Stone Mountain Drive. The parcel number for the property is 222916406079. A vicinity map showing the school's location is provided as **Figure 1**.

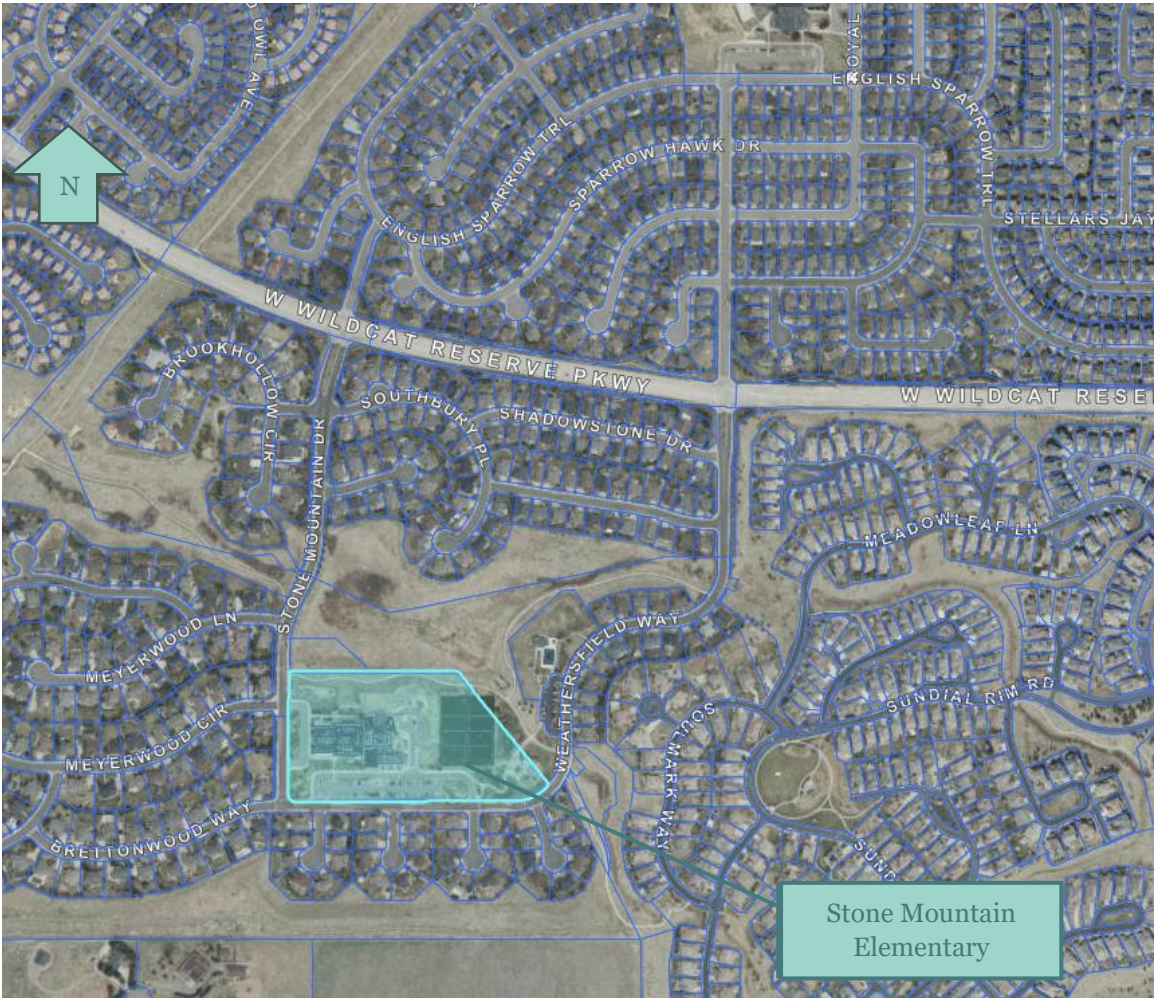


Figure 1 – Vicinity Map

Neighborhood local and collector streets are analyzed for safety challenges, bicycle and pedestrian facilities, parking availability, and queueing lengths. Larger intersections at arterial streets are analyzed for the same items, but also for accident history.

2.3 School Description

Stone Mountain has a start time of 8:25 AM and an end time of 3:30 PM. The school is located in the neighborhood to the south of Wildcat Reserve Parkway. Stone Mountain has a parking area on the south side of the building, which is connected to a two-lane pick-up and drop-off access drive. There is also another drop-off and pick-up drive on the west side of the building. Pedestrian crosswalks are located at the intersection of Stone Mountain Drive and Weathersfield Way and at each access to the pick-up and drop-off drive on the west side of the building. There are also two crosswalks crossing Weathersfield Way to the southeast of the property near Pronghorn Park. Stone Mountain has a maximum Capacity of 1,407 students but the largest enrollment since 2013 is 672 students.

School bus service is provided at Stone Mountain. Douglas County School District’s policy is for bus service to only be provided to elementary students within the school’s attendance boundary, and outside of a designated one-mile walking radius. **Figure 2** depicts Stone Mountain’s local attendance boundary in brown with the orange circle representing the walking radius. As of November 2024, 119 individuals are eligible to receive bus service, and 67 individuals used the bus service which is a 56 percent rate.

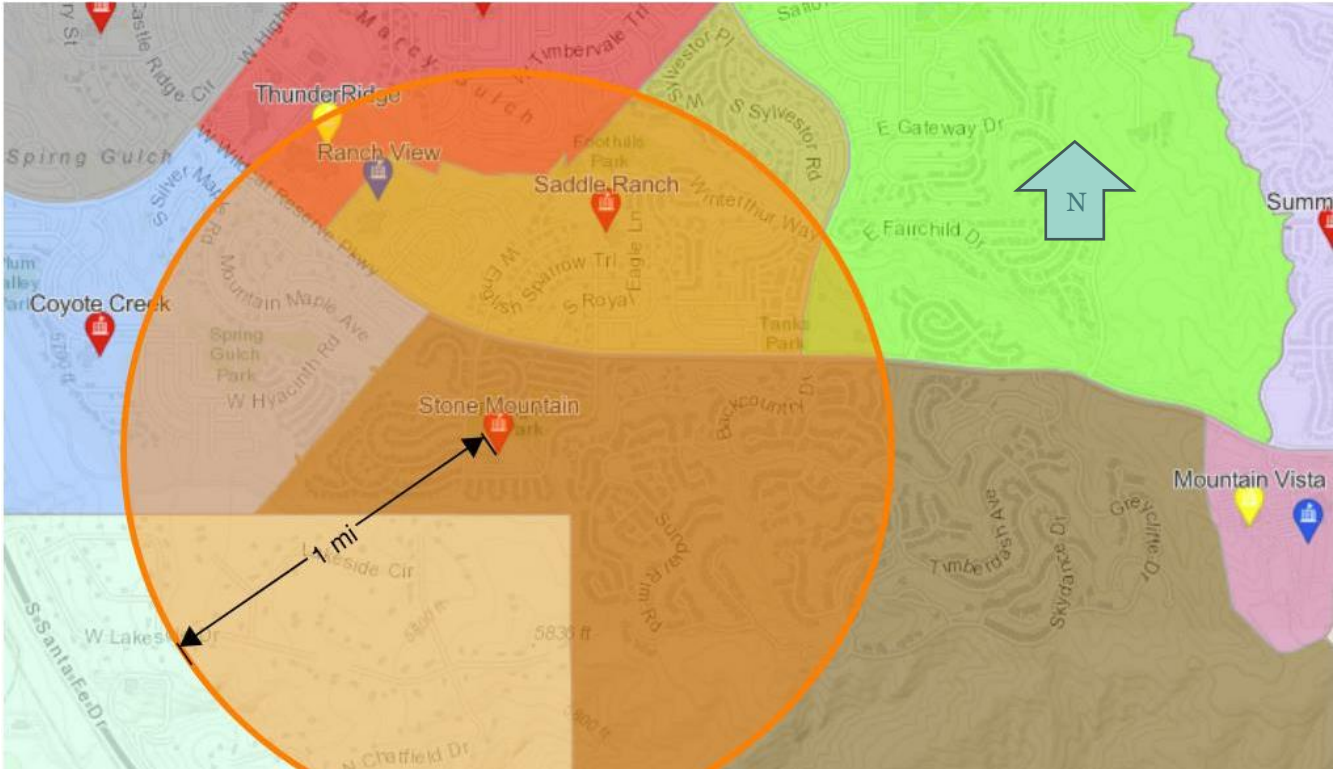


Figure 2 – Stone Mountain Bus Service Map

3. EXISTING CONDITIONS

3.1 Site Observation

A site observation was performed at Stone Mountain on November 12, 2024. Field notes from the site observation are included in **Appendix A**. The morning site observation was conducted from 7:45 AM through 9:15 AM and the afternoon site observation was conducted from 2:45 PM through 4:15 PM. Key observations included:

- Congestion on Weathersfield Way
- Inadequate speed control signage
- Vehicles exiting through lanes that are closed

3.2 Roadway Network

The Highlands Ranch roadway network is maintained by Douglas County. Stone Mountain is situated within a built-out neighborhood and is surrounded by local and neighborhood collector streets. The main accesses to the neighborhood are from Wildcat Reserve Parkway at Stone Mountain Drive and Wildcat Reserve Parkway at Weathersfield Way, with Wildcat Reserve Parkway being the main arterial closest to the school. Stone Mountain Drive and Weathersfield Way both extend from the school to unsignalized intersections at Wildcat Reserve Parkway.

School zone flashers operate from 8:10 to 8:50 AM and from 3:20 to 4:00PM. One flasher is located on Stone Mountain Drive, approximately 200 feet north of Weathersfield Way and another is located on Weathersfield Way directly adjacent to Weathersfield Court. A third flasher is situated on Brettonwood Way, 250 feet west of Stone Mountain Drive.

Wildcat Reserve Parkway at Stone Mountain Drive/Kingfisher Avenue

The intersection of Wildcat Reserve Parkway at Stone Mountain Drive/Kingfisher Road is an unsignalized intersection with a stop control on the northbound Stone Mountain Drive and the southbound Kingfisher Avenue approaches. **Figure 3** shows an aerial of the intersection with the current intersection layout.

Wildcat Reserve Parkway has two through lanes and a dedicated left-turn lane in each direction. The southbound approach of Kingfisher Avenue and the northbound approach of Stone Mountain Drive each only have one lane to accommodate all three movements. Bike lanes are present for both directions on Wildcat Reserve Parkway and Stone Mountain Drive.



Figure 3 – Wildcat Reserve Parkway at Stone Mountain Drive/Kingfisher Avenue

Wildcat Reserve Parkway at Weathersfield Way/Royal Eagle Road

The intersection of Wildcat Reserve Parkway at Royal Eagle Road/Weathersfield Way is an unsignalized intersection with stop control on the Weathersfield Way and Royal Eagle Road approaches. **Figure 4** shows an aerial of the intersection with the current intersection layout.

Wildcat Reserve Parkway has two through lanes and a dedicated left-turn lane in each direction. The approaches for Weathersfield Way and Royal Eagle Road each only have one lane shared for all three potential turning movements. The Weathersfield Way approach contains a physical median separating northbound and southbound traffic. Bike lanes are present for both directions on Wildcat Reserve Parkway.



Figure 4 – Wildcat Reserve Parkway at Royal Eagle Road/Weathersfield Way

Roadway Characteristics

General features of the roadways in the vicinity of Stone Mountain are summarized in **Table 1**.

Table 1 – Roadway Characteristics

Roadway	Stone Mountain Drive	Wildcat Reserve Parkway	Weathersfield Way
Speed Limit	30 mph	45 mph	25 mph
Number of Through Lanes	2	4	2
Lane Width	12 feet	12 feet	10 feet
Bike Lane Width	6 feet*	5 feet	4 feet**
Median	None	Striped	None
On-Street Parking	None	None	North side near school

*Bike lane width is measured from stripe to flowline

**Striping and bike lanes begin near school

3.3 Traffic Safety Analysis

Intersection Crash Analysis

Crash history was reviewed at the intersection of Wildcat Reserve Parkway at Royal Eagle Road/Weathersfield Way and Wildcat Reserve Parkway at Stone Mountain Drive/Kingfisher Road. Crashes were reviewed for the period between 2019 and 2024. **Table 2** Summarizes the year-by-year crash data for the intersections.

Crash diagrams and a listing of crashes are provided in **Appendix B**.

Wildcat Reserve Parkway at Royal Eagle Road/Weathersfield Way

There was a total of two crashes at Wildcat Reserve Parkway at Royal Eagle Road and Weathersfield Way over the course of the study period. Both of these involved injuries. Of the 2 crashes, one involved a left turn, and none were at night. None of these accidents involved a 3rd vehicle and one involved a bicycle. One accident involved a pedestrian, which was a school child. This accident occurred on October 27, 2022 around 3:30 PM, as the student was crossing Royal Eagle Road on foot and struck by a vehicle travelling southbound. It is unknown whether the child was a student of Stone Mountain or Saddle Ranch Elementary.

Wildcat Reserve Parkway at Stone Mountain Drive/Kingfisher Road

There was a total of three crashes at Wildcat Reserve Parkway at Stone Mountain Drive and Kingfisher Road over the course of the study period. Two of these involved injuries. Of the 3 crashes, two involved a left turn, and one was at night. None of these accidents involved a 3rd vehicle and none involved a bicycle. Both accidents that involved left turns caused a total of five injuries.

Table 2 – Annual Crash Summary

Year	Wildcat Reserve Parkway & Royal Eagle Road/Weathersfield Way	Wildcat Reserve Parkway & Stone Mountain Drive/ Kingfisher Road
2019	0	2
2020	0	0
2021	1	0
2022	1	0
2023	0	0
2024	0	1

School Safety

Students are picked up and dropped off primarily via the drop-off lane to the south of the school. A two lane, one-way aisle facilitates traffic, with vehicles entering the lot through the east access point and exiting through the west access point. Vehicles drop-off students using the right lane and use the left lane to exit the queue. On-street parking is provided on the north side of Weathersfield Way, but it is not fully used. Bike lanes are present for both directions on both Weathersfield Way and Stone Mountain Drive which limit on-street parking outside of the north side of Weathersfield Way.

4. PROJECTED SITE TRAFFIC IMPACTS

4.1 Projected Traffic

Douglas County School District (DCSD) is considering a potential school consolidation option that would consolidate Saddle Ranch Elementary into Stone Mountain. The consolidation option includes having 6th Grade students remain at the elementary school or a second option that move 6th Grade to the separate middle school. **Table 3** provides data on student enrollment for Stone Mountain and Saddle Ranch Elementary with and without 6th Grade.

Table 3 – School Enrollment

School	Ideal Capacity per DCSD	Maximum Historic Enrollment	2023-2024 Enrollment Count*	Projected 2028-2029 Enrollment*	2023-2024 Enrollment Count**	Projected 2028-2029 Enrollment**
Stone Mountain	713	672	491	343	424	297
Saddle Ranch	529	599	368	305	319	266

*Enrollment values include Pre-School through 6th Grade.

**Enrollment values include Pre-School through 5th Grade. 6th Grade enrollment was assumed to 1/7 of Kindergarten through 6th Grade enrollment.

The projected 2028-2029 combined enrollment if Saddle Ranch Elementary is consolidated into Stone Mountain is 648 students if 6th Grade is retained at the elementary level and 563 students without 6th Grade. These projected combined enrollment numbers are approximately between 15 percent and 35 percent more than the existing Stone Mountain enrollment.

Since enrollment is not projected to be more than 10 percent of the maximum historic enrollment, traffic data was not collected. However, increased traffic is still expected at Stone Mountain with the consolidated schools. As depicted in **Figure 2**, portions of the Saddle Ranch Elementary attendance area are outside of the designated one-mile walking radius. Additionally, DCSD will be providing bus services for current Saddle Ranch students who will need to cross an arterial roadway to arrive at Stone Mountain. Therefore, a portion of the Saddle Ranch Elementary attendance area may be provided bus service to Stone Mountain.

Consolidation of the schools will increase traffic at Stone Mountain with more vehicles using on-street parking, the school parking lot, and the pick-off/drop-off lanes. This will increase impacts to the surrounding roadways during pick-up and drop-off times. In addition, more vehicles and pedestrians will be traveling across Wildcat Reserve Parkway at unsignalized intersections, potentially leading to safety challenges.

4.2 Mitigation

Based on site observations and feedback from the Stone Mountain Administration, Stone Mountain faces the following challenges:

- Congestion on Weathersfield Way
- Excessive Speeding
- Vehicles exiting through lanes that are intended to be closed

The congestion on Weathersfield Way could be reduced, by increasing the vehicles queueing within the internal parking lot or adjusting the use of the Weathersfield Way parking lane. The western access point to the parking lot could be used as an entrance to the queue. Currently, this point is only designated for exiting vehicles; however, the access has enough width to accommodate entering vehicles as well. This will

allow the queue to utilize the 450-foot drive aisle between the parking lot spaces before making a U-turn into the drop-off lane. The first 200 feet of street parking on westbound Weathersfield Way east of the western parking lot access could be converted to a right-turn lane if the queue continues to extend to Weathersfield Way. This will allow vehicles to queue on the street without blocking through traffic.

Figure 5 displays the way this reconfiguration would allow for extra queue length. The negative consequence to relocating the queue to the internal parking lot includes blockage of parking stalls mainly during pick-up time which may reduce the number of vehicles using the parking lot during the afternoon pick-up.

A second option could be to implement a school policy to not park Weathersfield Way, east of the east parking lot access, adjacent to the neighboring park. The intent of the policy would be to allow only queued vehicles for school pickup.

There is adequate speed control signage. However, curb extensions could be installed at the crosswalks on Weathersfield way at Stone Mountain Drive, Abbotswood Court, and at crosswalk near Pronghorn Park. These will serve as traffic calming devices, and force drivers to slow down when passing through the area. These crosswalks are highlighted in light blue in **Figure 5**. If the vehicle queue entrance remains at the east end of the parking lot, then curb extensions are **not** recommended at Abbotswood Court.



Figure 5 – Stone Mountain Recommended Mitigation

5. CONCLUSIONS/RECOMMENDATIONS

This traffic memorandum addresses existing traffic patterns and potential traffic challenges at Stone Mountain Elementary School, while considering the anticipated increase in traffic due to the possible consolidation with Saddle Ranch Elementary. Two options are being considered if schools are consolidated: one maintaining 6th grade at the elementary school and one moving 6th grade to the middle school.

Traffic will be increased with the additional enrollment, but additional bus service will be offered, limiting the impact of the increased enrollment. Although historic enrollment levels suggest Stone Mountain could accommodate the increased traffic, more vehicles and pedestrians are expected. To address existing and potential future traffic challenges the following mitigation measures are recommended:

- Enact a school policy that prohibits vehicles from parking on Southbound Weatherford Way, north/east of the Abbotswood Court intersection during pick-up and drop-off times. As noted by Douglas County, this would need to be implemented by a School Resource Officer on a temporary basis during drop-off and/or pick-up times.
- Partner with Douglas County to create curb extensions on Weathersfield Way at mid-block pedestrian crossing locations to reduce the crossing distance and help improve sight lines to pedestrians prior to entering the roadway and promote reduced vehicle speeds.



- Monitor the intersections of Wildcat Reserve Parkway at Royal Eagle Road/Weathersfield Way and Wildcat Reserve Parkway at Kingfisher Avenue/Stone Mountain Drive for increased traffic safety concerns. If increased vehicle and pedestrian traffic causes safety concerns, additional mitigation measures may be required. No improvements are warranted at this time. A signal warrant analysis was performed by Douglas County at Wildcat Reserve Parkway and Royal Eagle Road in 2022. A traffic signal was not warranted or recommended at that location based on the 2022 warrant analysis.
- Partner with Highlands Ranch Metro District to utilize Pronghorn Park as an additional parking area for student pickup.



Appendix A Site Observation Note

TRAFFIC OBSERVATION REPORT

Project Name	DCSD Highland Ranch TIS	Project No.	1124175
Observer	Greg Nguyen		
Location	Stone Mountain Elementary		
Time	7:45 AM	AM / PM	
		DATE	11/12/2024
		M	T W Th F S S

Queueing Data

Start Time: 8:10 AM

End Time: 8:38 AM

Maximum Queueing Length: Maximum queue length is around 5 cars long, with a wait time no longer than 2 minutes.

Total Storage Length Available:
Approx. 450' for front kiss-and-go lane at front of school. Parents also use front, main lot for temporary parking before walking children to front door.

Comments:
Most parents park temporarily in front lot before dropping off kids crossing at the main crosswalk across from the school front doors. Storage lane in front of school is divided into a kiss-and-go lane and a lane for access to the parking lot with cones. Side lot is not used by parents. Surge time begins at 8:20 and ends at 8:38.

On-Street Parking Locations and Availability

Comments:
The parking lot in front of the school is the only parking lot servicing the school and has 86 available stalls, with two additional stalls marked out of service directly across from crosswalks across kiss-and-go lane. Three additional ADA stalls are provided. On-street parking is available on Weathersfield Way, but is not used. Only one bus services school. Bus arrives at the side lot of the school at 8:35. Some children bike to school, and bike racks are available on the southwest corner of the building, and are only available from the west side due to slopes down to bike racks. Some parents will also walk their children to school.

Crosswalk Locations and Usage

Comments:
Main crosswalk used by parents and children is the crosswalk leading directly to the front door of the school across the parking lot and kiss-and-go lane. Two other crosswalks across this lane and parking lot are available. The crosswalk just north of Meyerwood Circle is not inside of the school zone and presents a hazard for cars moving quickly on S. Stone Mountain Dr. The crosswalk to the path through Pronghorn park to the back of the school is also not inside the school zone and is a likewise hazard. Crosswalks are only available at some intersections immediately around school, but other crossings only have the valley gutter which can be a hazard in wet and cold conditions.

Roadway Characteristics

Speed Limit(s) and Location(s):

Stone Mountain school is located northeast of the tee intersection of S. Stone Mountain Drive and Weathersfield Way. West of the same tee intersection, Weathersfield Way becomes Brettonwood Way. All roads arounds school except S. Stone Mountain Drive are 25 MPH roads, with Stone Mountain drive being a 30 MPH road. Inside of the school zone, speeds are 15 MPH.

Signage:

Signs and cones are used in the kiss-and-go lane to denote pickup/drop-off and access to the parking lot. Original west access served as entrance and exit, but has been signed as exit only, but can be confusing for drivers turning left out of parking lot. Side bus loop is signed as one-way counterclockwise through loop. School zone ends very close to school on west side of school and does not encompass the northwest crosswalk.

Bike Lanes:

Bike lanes are present along S. Stone Mountain Dr. and Weathersfield Way.

Other Comments:

Law enforcement onsite noted that within the school zone, there is not adequate speed control signs. School zone sign NW end is partially covered by tree branches.

Sight Visibility Challenges

Comments:

The exit of the main parking lot has had it's original left entrance lane marked out of service, but is sometimes still used on accident and presents a blind spot on the turn left out of the parking lot.

Congestion Areas

Comments:

All congestion is located in the kiss-and-go lane and in the parking lot. Wait times for queues are no longer than 2 minutes.

General Traffic Observations

Comments:

More plowing is needed on the westbound shoulder of Weathersfield way, as snow pileup discourages parking along Weathersfield, which diverts more traffic to the kiss-and-go lane and parking lot. In cold weather, parents prefer driving children to school instead of walking them to school or having them bike. Intersection of Brettonwood, Stone Mountain, and Weathersfield is a 1-way stop.

TRAFFIC OBSERVATION REPORT

Project Name	DCSD Highland Ranch TIS	Project No.	1124175
Observer	Greg Nguyen		
Location	Stone Mountain Elementary		
Time	2:45 PM	AM / PM	
		DATE	11/12/2024
		M	T W Th F S S

Queueing Data

Start Time: 2:55 PM

End Time: 3:41 PM

Maximum Queueing Length:

Approximately 1200 feet, starting from the main crosswalk at the school queueing back through the storage lane and along Weathersfield Way towards Pronghorn park..

Total Storage Length Available:

Approx. 450' for front kiss-and-go lane at front of school. Parents also use front, main lot for temporary parking and park at Pronghorn Park and walk to school to pick up kids.

Comments:

When storage lane is full and cars begin to queue along Weathersfield towards Pronghorn Park, passing cars through Weathersfield will overtake idling vehicles to pass. No queue is formed at the left turn into the entrance on eastbound Weathersfield. Highest volume of traffic noted at 3:30.

On-Street Parking Locations and Availability

Comments:

The parking lot in front of the school is the only parking lot servicing the school and has 86 available stalls, with two additional stalls marked out of service directly across from crosswalks across kiss-and-go lane. Three additional ADA stalls are provided. On-street parking is available on Weathersfield Way. Only one bus services school. Bus arrives at the side lot of the school at 3:35 and departs at 3:40. Some children bike to and from school, and bike racks are available on the southwest corner of the building, and are only available from the west side due to slopes down to bike racks. Some parents will also walk their children from school or back along Weathersfield towards Pronghorn Park to street parking. Parents will also park in cul-de-sacs immediately south of school.

Crosswalk Locations and Usage

Comments:

Main crosswalk used by parents and children is the crosswalk leading directly to the front door of the school across the parking lot and kiss-and-go lane. Two other crosswalks across this lane and parking lot are available. The crosswalk just north of Meyerwood Circle is not inside of the school zone and presents a hazard for cars moving quickly on S. Stone Mountain Dr. Staff from school hold "please slow down" signs as crosswalk is out of school zone. The crosswalk to the path through Pronghorn park to the back of the school is also not inside the school zone and is a likewise hazard. Crosswalks are only available at some intersections immediately around school, but other crossings only have the valley gutter which can be a hazard in wet and cold conditions.

Roadway Characteristics

Speed Limit(s) and Location(s):

Stone Mountain school is located northeast of the tee intersection of S. Stone Mountain Drive and Weathersfield Way. West of the same tee intersection, Weathersfield Way becomes Brettonwood Way. All roads arounds school except S. Stone Mountain Drive are 25 MPH roads, with Stone Mountain drive being a 30 MPH road. Inside of the school zone, speeds are 15 MPH.

Signage:

Original west access served as entrance and exit, but has been signed as exit only, but can be confusing for drivers turning left out of parking lot. Side bus loop is signed as one-way counterclockwise through loop. School zone ends very close to school on west side of school and does not encompass the northwest crosswalk.

Bike Lanes:

Bike lanes are present along S. Stone Mountain Dr. and Weathersfield Way.

Other Comments:

Law enforcement onsite noted that within the school zone, there is not adequate speed control signs. School zone sign NW end is partially covered by tree branches.

Sight Visibility Challenges

Comments:

The exit of the main parking lot has had it's original left entrance lane marked out of service, but is sometimes still used on accident and presents a blind spot on the turn left out of the parking lot.

Congestion Areas

Comments:

The intersection of Abbotswood Court and Weathersfield Way into the school sees the greatest concentration of congestion with queue extending along Weathersfield way. There is also some congestion at the parking lot and kiss-and-go exit, and nearby intersection of Weathersfield Way and Stone Mountain Drive.

General Traffic Observations

Comments:

More plowing is needed on the westbound shoulder of Weathersfield way, as snow pileup discourages parking along Weathersfield, which diverts more traffic to the kiss-and-go lane and parking lot. In cold weather, parents prefer driving children to school instead of walking them to school or having them bike. Intersection of Brettonwood, Stone Mountain, and Weathersfield is a 1-way stop. School Zone lights were active from 3:20 to 4:00.



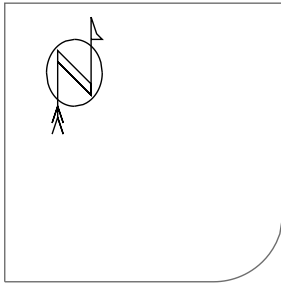
Appendix B Crash Diagrams and Listings

WILDCAT RESERVE PKWY & KINGFISHER AVE

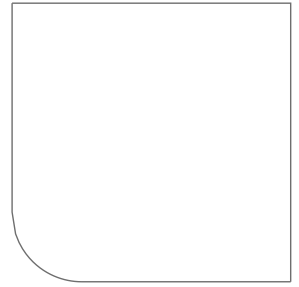
2019 - 2024

3 Crashes

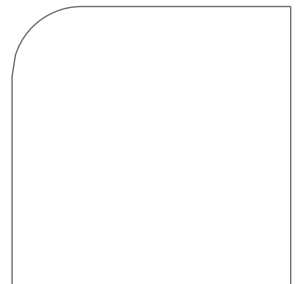
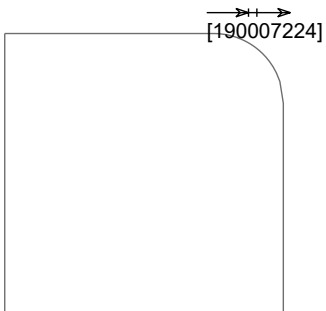
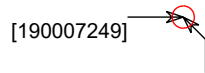
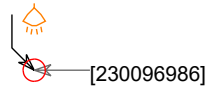
Clear



Kingfisher



Wildcat Reserve



- ← Straight
- ←+ Stopped
- ← Unknown
- ↔ Backing
- ↔↔ Overtaking
- ↔ Sideswipe

- Parked
- Weaving
- Changing Ln
- Right turn
- Left turn
- U-turn

- Pedestrian
- Bicycle
- Injury
- Fatality
- Nighttime
- DUI

- 3rd Vehicle
- Motorcycle
- Overturn

- Fixed objects:**
- General
 - Animal
 - Public Obj
 - Private Obj

Crash Magic Online 11/14/2024

WILDCAT RESERVE PKWY & KINGFISHER AVE

2019 - 2024

3 Crashes

Clear

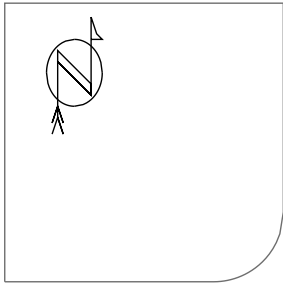
Casetrackingid	Accidenttime	Accidentdate	Primarystreet	Crossstreet	Onroadaddress	Numberinjured	Numberkilled	Harmfuleventl
190007224	3:09 pm	1/17/2019	WILDCAT RESERVE PKWY	STONE MOUNTAIN DR		0	0	Front to Rear
190007249	3:09 pm	1/17/2019	STONE MOUNTAIN DR	WILDCAT RESERVE PKWY		2	0	Front to Side
230096986	5:54 pm	11/10/2023	KINGFISHER AVE	WILDCAT RESERVE PKWY		3	0	Front to Side

WILDCAT RESERVE PKWY & ROYAL EAGLE ST

2019 - 2024

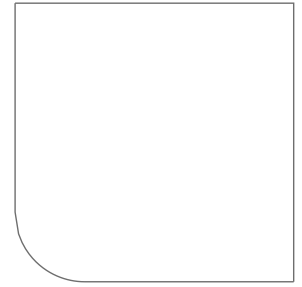
2 Crashes

Clear

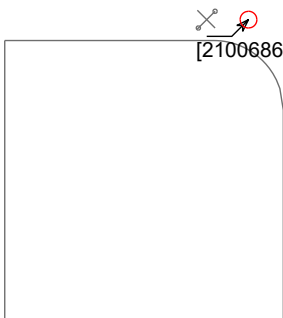


[220085650]

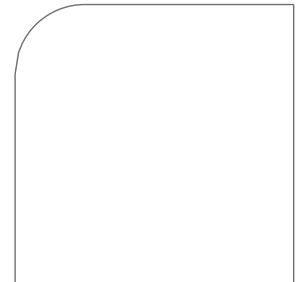
Royal Eagle



Wildcat Reserve



[210068602]



- ← Straight
- ←+ Stopped
- ← Unknown
- ↔ Backing
- ↔ Overtaking
- ↔ Sideswipe

- Parked
- Weaving
- Changing Ln
- Right turn
- Left turn
- U-turn

- Pedestrian
- Bicycle
- Injury
- Fatality
- Nighttime
- DUI

- 3rd Vehicle
- Motorcycle
- Overturn

- Fixed objects:
- General Animal
 - Public Obj Private Obj

WILDCAT RESERVE PKWY & ROYAL EAGLE ST

2019 - 2024

2 Crashes

Clear

Casetrackingid	Accidenttime	Accidentdate	Primarystreet	Crossstreet	Onroadaddress	Numberinjured	Numberkilled	Harmfulevent1
210068602	7:06 am	8/24/2021	WILDCAT RESERVE PKWY	ROYAL EAGLE ST		1	0	Bicycle / Motorized Bicycle
220085650	3:26 pm	10/27/2022	WILDCAT RESERVE PKWY	ROYAL EAGLE ST		0	0	School Age To/ From School