



**SADDLE RANCH ELEMENTARY**  
Traffic Memorandum

Project Number: 1124175

Prepared For: Douglas County  
School District

March 21, 2025



# SADDLE RANCH ELEMENTARY

## Traffic Memorandum

Highlands Ranch, Colorado

Project Number: 1124175

Prepared For: Douglas County School District  
Planning and Construction  
2808 Highway 85, Building B  
Castle Rock, Colorado 80109

March 21, 2025



Nicholas J Westphal, PE  
Project Manager

***Dibble & Associates Consulting Engineers, Inc., dba Dibble***



---

## Table of Contents

---

1. EXECUTIVE SUMMARY .....	2
2. INTRODUCTION.....	3
2.1 Study Purpose and Scope .....	3
2.2 Study Area.....	3
2.3 School Description.....	4
3. EXISTING CONDITIONS .....	5
3.1 Site Observation .....	5
3.2 Roadway Network .....	5
3.3 Traffic Safety Analysis .....	8
4. PROJECTED SITE TRAFFIC IMPACTS .....	9
4.1 Projected Traffic .....	9
4.2 Mitigation.....	9
5. CONCLUSIONS/RECOMMENDATIONS.....	12

---

## List of Figures

---

Figure 1: Vicinity Map .....	3
Figure 2: Saddle Ranch Bus Service Map.....	4
Figure 3: Broadway/Backcountry Drive at Wildcat Reserve Parkway .....	6
Figure 4: Wildcat Reserve Parkway at Weathersfield Way/Royal Eagle Road .....	7
Figure 5: Vegetation at Royal Eagle Lane and Eagle Valley Way .....	10
Figure 6: Queuing on Royal Eagle Lane .....	10
Figure 7: Crosswalk on Royal Eagle Lane .....	11
Figure 8: South Parking Lot Layout .....	11

---

## List of Tables

---

Table 1 – Roadway Characteristics .....	7
Table 2 – Annual Crash Summary.....	8
Table 3 – School Enrollment .....	9

---

## Appendices

---

Appendix A Site Observation Notes .....	A
Appendix B Crash Diagrams and Listings.....	B
Appendix C School Questionnaire .....	C

## 1. EXECUTIVE SUMMARY

Douglas County School District is considering options for consolidating schools in Highlands Ranch, Colorado. The Saddle Ranch Elementary consolidation option includes having Stone Mountain Elementary consolidate into Saddle Ranch Elementary. In addition, removing 6th grade from the elementary schools is being considered, so if the schools are consolidated, the final enrollment may or may not include 6th grade. This Traffic Memorandum reviews existing traffic and provides potential mitigation measures for current traffic and potential increased traffic challenges due to increased enrollment caused by school consolidations.

Saddle Ranch has two parking areas, one to the south with two access points on English Sparrow Trail, and one to the east with two access points on Royal Eagle Lane. School bus service is not provided at Saddle Ranch; however, school bus service will be provided for a portion of the Stone Mountain attendance area attending Saddle Ranch.

The projected 2028-2029 combined enrollment is 648 students if 6<sup>th</sup> Grade is retained at the elementary level and 563 students without 6<sup>th</sup> Grade. These projected combined enrollment numbers are approximately between 55 percent and 75 percent higher than the existing Saddle Ranch enrollment.

Consolidation of the schools will increase traffic at Saddle Ranch with more vehicles using on-street parking, the school parking lot, and the pick-off/drop-off lanes. This will increase impacts to the surrounding roadways during pick-up and drop-off times. In addition, more vehicles and pedestrians will be traveling across Wildcat Reserve Parkway at unsignalized intersections, potentially leading to safety challenges.

Although historic enrollment levels suggest Saddle Ranch could accommodate the increased traffic, more vehicles and pedestrians are expected. To address existing and potential future traffic challenges the following mitigation measures are recommended:

- Coordinate with Highlands Ranch Community Association to request the owner at the northeast corner of Royal Eagle Lane at Eagle Valley Way trim vegetation for increased site visibility.
- Coordinate with Douglas County to further analyze a no parking zone along the southbound curb, north of the bus loop entrance on Royal Eagle Lane, to prevent traffic from parking at and near the crosswalk, limiting visibility of pedestrians crossing the street.
- Monitor the intersection of Wildcat Reserve Parkway at Royal Eagle Road/Weathersfield Way for increased traffic safety concerns. If increased vehicle and pedestrian traffic causes safety concerns, additional mitigation measures may be required. No improvements are warranted at this time.

## 2. INTRODUCTION

### 2.1 Study Purpose and Scope

The purpose of this Traffic Memorandum is to discuss the existing traffic patterns at Saddle Ranch Elementary (Saddle Ranch) and potential mitigation measures for current traffic and potential increased traffic due to increased enrollment caused by school consolidations. A potential school consolidation option includes having Stone Mountain Elementary consolidate into Saddle Ranch.

The scope of this memorandum includes assessing school driveways, nearby intersections, school parking lots, school drop-off and pick-up locations, traffic flow, bicycle and pedestrian facilities, and general traffic challenges at Saddle Ranch.

### 2.2 Study Area

Saddle Ranch Elementary School is located at 805 English Sparrow Trail in the western region of Highlands Ranch. This is near the intersection of English Sparrow Trail and Royal Eagle Lane. The parcel number for the property is 222915205056. A vicinity map showing the school's location is provided as **Figure 1**.



**Figure 1: Vicinity Map**

Neighborhood local and collector streets are analyzed for safety challenges, bicycle and pedestrian facilities, parking availability, and queueing lengths. Larger intersections at arterial streets are analyzed for the same items, but also for accident history.

### 2.3 School Description

Saddle Ranch has a start time of 8:30 AM and an end time of 3:30 PM. The school is located in the neighborhood to the northwest of the intersection of Wildcat Reserve Parkway and Broadway. Saddle Ranch has two parking areas, one to the south with two access points on English Sparrow Trail, and one to the east with two access points on Royal Eagle Lane. Each parking area is one-way with one access being an entrance and one access being an exit. Pedestrian crosswalks are located at the intersection of English Sparrow Trail and Royal Eagle Lane, at the intersection of English Sparrow Trail and S Royal Eagle Road, and north of Saddle Ranch on Royal Eagle Lane. Saddle Ranch has a maximum Capacity of 800 students but the largest enrollment since 2013 is 599 students.

School bus service is not provided at Saddle Ranch. Douglas County School District’s policy is for bus service to only be provided to elementary students within the school’s attendance boundary, and outside of a designated one-mile walking radius. **Figure 2** depicts Saddle Ranch’s local attendance boundary in gold with the orange circle representing the walking radius. As depicted, the entire local attendance boundary is within one mile, so no local bus service is provided.

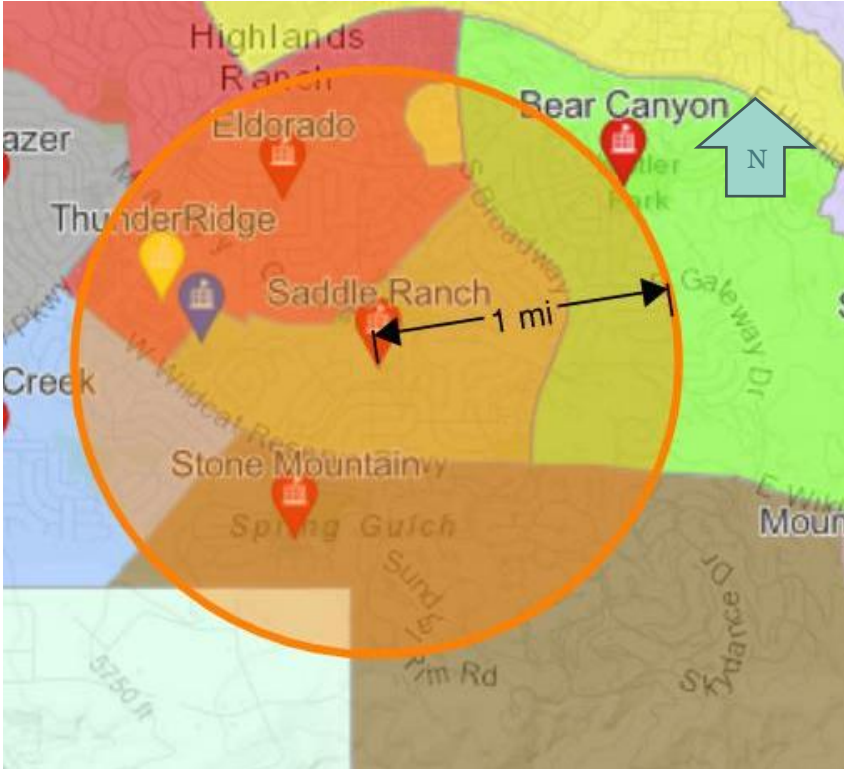


Figure 2: Saddle Ranch Bus Service Map

## 3. EXISTING CONDITIONS

### 3.1 Site Observation

A site observation was performed at Saddle Ranch on November 11, 2024. Field notes from the site observation are included in **Appendix A**. The morning site observation was conducted from 7:45 AM through 9:15 AM and the afternoon site observation was conducted from 2:45 PM through 4:15 PM. Key observations included:

- Long queues on Royal Eagle Lane
- Poor Sight Visibility for intersection of English Sparrow Trail at Eagle Valley Way
- Street parking was heavily used
- Pedestrians used crosswalks well

### 3.2 Roadway Network

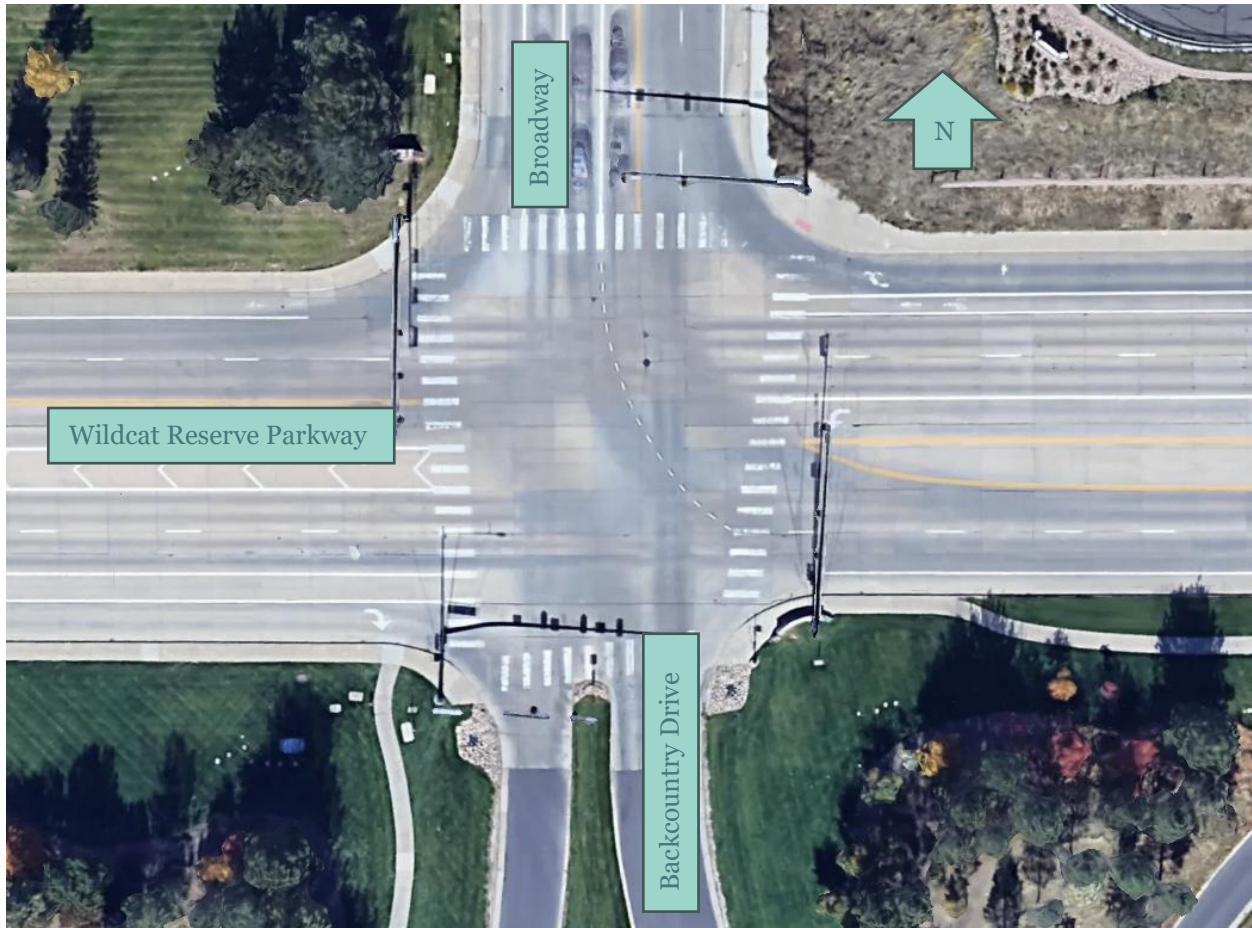
The Highlands Ranch roadway network is maintained by Douglas County. Saddle Ranch is situated within a built-out neighborhood and is surrounded by local and neighborhood collector streets. The main accesses to the neighborhood are from Wildcat Reserve Parkway at Royal Eagle Road and Broadway at Winterthur Way, with Wildcat Reserve Parkway being the main arterial closest to the school. Royal Eagle Road extends from the school to an unsignalized intersection at Wildcat Reserve Parkway.

School zone flashers operate from 8:10 to 8:50 AM and from 3:20 to 4:00PM. One flasher is located on Royal Eagle Road, approximately 450 feet south of English Sparrow Trail. Two flashers are located on English Sparrow Trail on either side of the school. Another flasher is located on Royal Eagle Lane north of the school.

#### **Broadway/Backcountry Drive at Wildcat Reserve Parkway**

The intersection of Wildcat Reserve Parkway at Broadway/Backcountry Drive is a signalized intersection with protected/permissive left-turn lanes/phases for traffic on Wildcat Reserve Parkway and protected left turns/phases for the Broadway approach Backcountry Drive approach. **Figure 3** shows an aerial of the intersection with the current intersection layout.

Wildcat Reserve Parkway has two through lanes, a dedicated left-turn lane, and a dedicated right-turn lane in each direction. The southbound Broadway approach has one through lane, two dedicated left-turn lanes, and one dedicated right-turn lane. The northbound Backcountry Drive approach has a shared right-turn lane and a dedicated left-turn lane. Bike lanes are present for both directions on Wildcat Reserve Parkway and northbound Broadway. A bike lane is also present on southbound Broadway, but it merges with vehicular traffic before reaching the intersection.



**Figure 3: Broadway/Backcountry Drive at Wildcat Reserve Parkway**

### **Wildcat Reserve Parkway at Weathersfield Way/Royal Eagle Road**

The intersection of Wildcat Reserve Parkway at Weathersfield Way/Royal Eagle Road is an unsignalized intersection with stop control on the Weathersfield Way and Royal Eagle Road approaches. **Figure 4** shows an aerial of the intersection with the current intersection layout.

Wildcat Reserve Parkway has two through lanes and a dedicated left-turn lane in each direction. The approaches for Weathersfield Way and Royal Eagle Road each only have one lane shared for all three potential turning movements. The Weathersfield Way approach contains a physical median separating northbound and southbound traffic. Bike lanes are present for both directions on Wildcat Reserve Parkway.





**Figure 4: Wildcat Reserve Parkway at Weathersfield Way/Royal Eagle Road**

**Roadway Characteristics**

General features of the roadways in the vicinity of Saddle Ranch are summarized in **Table 1**.

**Table 1 – Roadway Characteristics**

Roadway	Royal Eagle Road	Wildcat Reserve Parkway
Speed Limit	30 mph	45 mph
Number of Through Lanes	2	4
Lane Width	19 feet*	12 feet
Bike Lane Width	None	5 feet
Median	None	Striped
On-Street Parking	Both Sides	None

\*Lane width is defined as distance from crown to edge of pavement

### 3.3 Traffic Safety Analysis

#### Intersection Crash Analysis

Crash history was reviewed at the intersection of Wildcat Reserve Parkway at Royal Eagle Road and Weathersfield Way. Crashes were reviewed for the period between 2019 and 2024. **Table 2** Summarizes the year-by-year crash data for the intersections.

Crash diagrams and a listing of crashes are provided in **Appendix B**.

#### Wildcat Reserve Parkway at Royal Eagle Road/Weathersfield Way

There was a total of two crashes at Wildcat Reserve Parkway at Royal Eagle Road and Weathersfield Way over the course of the study period. Both of these involved injuries. Of the 2 crashes, one involved a left turn, and none were at night. None of these accidents involved a 3<sup>rd</sup> vehicle and one involved a bicycle. One accident involved a pedestrian, which was a school child. This accident occurred on October 27, 2022 around 3:30 PM, as the student was crossing Royal Eagle Road on foot and struck by a vehicle travelling southbound. It is unknown whether the child was a student of Stone Mountain or Saddle Ranch Elementary.

**Table 2 – Annual Crash Summary**

Year	Wildcat Reserve Parkway & Royal Eagle Road/Weathersfield Way
2019	0
2020	0
2021	1
2022	1
2023	0
2024	0

#### School Safety

Students are picked up and dropped off primarily via the drop-off lane to the east of the school. The parking lot on the south side of the building was also used for pick-up and drop-off. A two-lane, one-way aisle facilitates traffic, with the right lane used to pick-up and drop-off students, and the left lane used to exit the queue at both accesses. On-street parking is provided for both sides of English Sparrow Trail and on both sides of Royal Eagle Lane. This is used heavily during drop-off and pickup times. Bike lanes are not present on any streets directly adjacent to the school. Mild sun glare was observed in the morning hours.

Saddle Ranch was provided with a questionnaire to provide any feedback related to traffic and school safety. Responses to the questionnaire are provided in **Appendix C**.

Saddle Ranch Administration commented on the following:

- Congestion on Royal Eagle Lane
- Sight visibility challenges at the southern lot due to parked cars

## 4. PROJECTED SITE TRAFFIC IMPACTS

### 4.1 Projected Traffic

Douglas County School District (DCSD) is considering a potential school consolidation option that would consolidate Stone Mountain Elementary into Saddle Ranch. The consolidation option includes having 6<sup>th</sup> Grade students remain at the elementary school or a second option that move 6<sup>th</sup> Grade to the separate middle school. **Table 3** provides data on student enrollment for Saddle Ranch and Stone Mountain Elementary with and without 6<sup>th</sup> Grade.

**Table 3 – School Enrollment**

School	Ideal Capacity per DCSD	Maximum Historic Enrollment	2023-2024 Enrollment Count*	Projected 2028-2029 Enrollment*	2023-2024 Enrollment Count**	Projected 2028-2029 Enrollment**
Saddle Ranch	529	599	368	305	319	266
Stone Mountain	713	672	491	343	424	297

\*Enrollment values include Pre-School through 6<sup>th</sup> Grade.

\*\*Enrollment values include Pre-School through 5<sup>th</sup> Grade. 6<sup>th</sup> Grade enrollment was assumed to 1/7 of Kindergarten through 6<sup>th</sup> Grade enrollment.

The projected 2028-2029 combined enrollment if Saddle Ranch Elementary is consolidated into Stone Mountain is 648 students if 6<sup>th</sup> Grade is retained at the elementary level and 563 students without 6<sup>th</sup> Grade. These projected combined enrollment numbers are approximately between 55 percent and 75 percent more than the existing Saddle Ranch enrollment.

Since enrollment is not projected to be more than 10 percent of the maximum historic enrollment, traffic data was not collected. However, increased traffic is still expected at Saddle Ranch with the consolidated schools. As depicted in **Figure 2**, much of the Stone Mountain Elementary attendance area is outside of the designated one-mile walking radius. Therefore, a large portion of the Stone Mountain Elementary attendance area would be bused to Saddle Ranch.

Consolidation of the schools will increase traffic at Saddle Ranch with more vehicles using on-street parking, the school parking lot, and the pick-off/drop-off lanes. This will increase impacts to the surrounding roadways during pick-up and drop-off times. In addition, more vehicles and pedestrians will be traveling across Wildcat Reserve Parkway at unsignalized intersections, potentially leading to safety challenges.

### 4.2 Mitigation

Based on site observations and feedback from the Saddle Ranch Administration, Saddle Ranch faces the following challenges:

- Limited sight distance for left-turn traffic from Eagle Valley Way to English Sparrow Trail.
- Queues extending from the east parking lot onto Eagle Sparrow Trail during afternoon pick-up.
- A potential need for an additional crosswalk on the west side of the south drop-off/pick-up lane.

Sight distance at the intersection of Eagle Valley Way and Royal is limited by vegetation on the northeast corner of the intersection as depicted in **Figure 5**. To increase safety at the intersection, the vegetation should be trimmed to allow for 280-feet of sight visibility as recommended in the Douglas County Roadway Design and Technical Criteria Manual, Figure 4-15.



**Figure 5: Vegetation at Royal Eagle Lane and Eagle Valley Way**

Vehicle queuing occurs mainly during the afternoon pick-up times. Typically, the queues for the south parking lot do not extend to English Sparrow Trail; however, the queues from the east parking lot, do extend to the north along Royal Eagle Lane for five to ten minutes as depicted in **Figure 6**. North of the east parking lot entrance is a crosswalk (Shown in **Figure 7**) that the vehicle queue conflicts with. For pedestrian visibility and improved safety, no parking signs should be considered on the west side of the road, for southbound traffic between the residential fence and the east parking lot access.

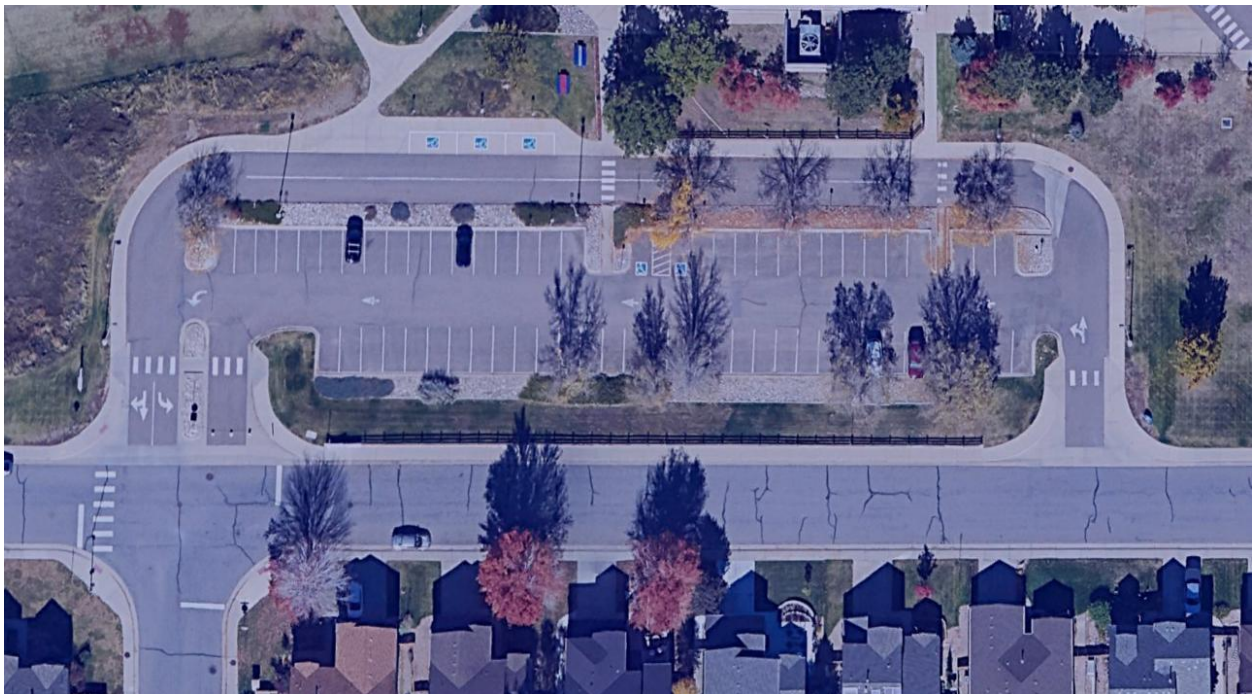


**Figure 6: Queuing on Royal Eagle Lane**



**Figure 7: Crosswalk on Royal Eagle Lane**

The potential need for an additional crosswalk on the west side of the south parking lot was presented by Saddle Ranch Administration. Currently there are two crosswalks crossing the drop-off/pick-up lane; however, there is a sidewalk that extends from the building entrance to the western end of the lane as depicted in **Figure 8**. While a new crosswalk here could allow an alternative option for pedestrians to cross, it is not recommended as it introduces an additional conflict between vehicles and pedestrians.



**Figure 8: South Parking Lot Layout**

## 5. CONCLUSIONS/RECOMMENDATIONS

This traffic memorandum addresses existing traffic patterns and potential traffic challenges at Saddle Ranch Elementary School, while considering anticipated increase in traffic due to the possible consolidation with Stone Mountain Elementary. Two options are being considered if schools are consolidated: one maintaining 6<sup>th</sup> grade at the elementary school and one moving 6<sup>th</sup> grade to the middle school.

Traffic will be increased with the additional enrollment, but additional bus service will be offered, limiting the impact of the increased enrollment. Although historic enrollment levels suggest Saddle Ranch could accommodate the increased traffic, more vehicles and pedestrians are expected. To address existing and potential future traffic challenges the following mitigation measures are recommended:

- Coordinate with Highlands Ranch Community Association to request the owner at the northeast corner of Royal Eagle Lane at Eagle Valley Way trim vegetation for increased site visibility.
- Coordinate with Douglas County to further analyze a no parking zone along the southbound curb, north of the bus loop entrance on Royal Eagle Lane, to prevent traffic from parking at and near the crosswalk, limiting visibility of pedestrians crossing the street.
- Monitor the intersection of Wildcat Reserve Parkway at Royal Eagle Road/Weathersfield Way for increased traffic safety concerns. If increased vehicle and pedestrian traffic causes safety concerns, additional mitigation measures may be required. No improvements are warranted at this time.



## **Appendix A Site Observation Notes**

## TRAFFIC OBSERVATION REPORT

<b>Project Name</b>	DCSD Highland Ranch TIS	<b>Project No.</b>	1124175
<b>Observer</b>	Greg Nguyen		
<b>Location</b>	Saddle Ranch Elementary		
<b>Time</b>	7:45 AM	<b>AM / PM</b>	
		<b>DATE</b>	11/11/2024
		<b>M</b>	<b>T</b> <b>W</b> <b>Th</b> <b>F</b> <b>S</b> <b>S</b>

### Queueing Data

**Start Time:** 8:28 AM

**End Time:** 8:45 AM

**Maximum Queueing Length:** 4 Cars, wait time was less than 2 minutes.

**Total Storage Length Available:** Approx. 300' for front lot. Approx. 500' for side lot.

#### Comments:

Queueing begins at around 8:28, with cars backed up along storage lanes in front and side lot, and backed up at the stop signs at W. English Sparrow Trail and S. Royal Eagle Lane, and the intersection of W. English Sparrow Trail and S. Royal Eagle Road. Maximum wait time is no longer than 2 minutes, with most delays at stop signs.

### On-Street Parking Locations and Availability

#### Comments:

The side lot (East of school) contains 21 parking stalls with 3 additional ADA stalls. These are used by staff and for temporary parking for parents to drop off children at the school at doors before departing. The front long (South of school) contains 64 parking stalls with 2 ADA parking stalls in the lot, with an additional 3 ADA parking slots along the drop-off lane. These are also used by staff and for temporary parking for parents like above.

### Crosswalk Locations and Usage

#### Comments:

School zone lights start at 8:10 AM, and run until 9:00 AM. Overwhelmingly, students are dropped off at the front doors of the school located on the southwest face of the school, and pedestrian traffic approaches from the southwest and the southeast. Flaggers from the school arrive at the two stop signs, and at the crosswalk across the main parking lot to the main entrance at 8:25. Flaggers return inside at 8:36. All traffic to school ends by 8:45.



## Roadway Characteristics

### Speed Limit(s) and Location(s):

The school is located at the northwest corner of S. Royal Eagle Lane and W English Sparrow Trail. Both of these roads are normally 25 MPH roads, lowered to 20 MPH in the school zone. South Royal Eagle Road is the notable local street connecting the school to the nearest major road, Wildcat Reserve Parkway. S. Royal Eagle Road is normally a 30 MPH road, lowered to 20 MPH in the school zone.

### Signage:

### Bike Lanes:

There are no bike lanes leading to or around the school.

### Other Comments:

Steep curbs around the school except at loading/unloading locations. Curbs in surrounded neighborhood are round.

## Sight Visibility Challenges

### Comments:

Mild sun glare for eastbound traffic along W. English Sparrow Trail. S. Eagle Valley Way has poor visibility on its one defining turn, and poor visibility at the stop sign intersection with S. Royal Eagle Lane. The Front Lot drop-off lane has poor visibility to the eastmost crosswalk on the left turn into the drop-off lane.

## Congestion Areas

### Comments:

W. English Sparrow Trail with its' two stop sign intersections at S. Royal Eagle Ln and S. Royal Eagle Trail are the only site with any noteworthy congestion. Dropoff zones see some light congestion at crosswalks and waiting for passengers to unload.

## General Traffic Observations

### Comments:

First Bell at school sounds at 8:30, second bell and school announcement sounds at 8:40. One biker was observed going to school. Pedestrian traffic includes children and parents walking together. Icy ponding was noted at the side lot exit. No buses service this school. Crosswalks are only present within the school perimeter and only at some immediately adjacent intersections. Other intersections near school do not have crosswalks. Car queue at main lot exit starts atop pedestrian crosswalk. No traffic to school was noted from the northwest (Grand View Trail)

## TRAFFIC OBSERVATION REPORT

<b>Project Name</b>	DCSD Highland Ranch TIS	<b>Project No.</b>	1124175
<b>Observer</b>	Greg Nguyen		
<b>Location</b>	Saddle Ranch Elementary		
<b>Time</b>	2:45 PM	<b>AM / PM</b>	
		<b>DATE</b>	11/11/2024
		<b>M</b>	<b>T</b> <b>W</b> <b>Th</b> <b>F</b> <b>S</b> <b>S</b>

<b>Queueing Data</b>
<b>Start Time:</b> 2:55 PM
<b>End Time:</b> 3:35 PM
<b>Maximum Queueing Length:</b> 600 feet, starting from the side school door (north) sidewalk queueing northward along S. Royal Eagle Lane. Max wait time was less than two minutes after class ends.
<b>Total Storage Length Available:</b> Approx. 300' for side lot. Approx. 500' for front lot.
<b>Comments:</b> Parking lots fill first, then parents part on adjacent streets to school and idle in the storage lanes. Queueing begins before school ends at 3:30. Children walk along sidewalks down queue to their parents car to load, which reduces queueing.

<b>On-Street Parking Locations and Availability</b>
<b>Comments:</b> The side lot (East of school) contains 21 parking stalls with 3 additional ADA stalls. These are used by staff and for temporary parking for parents to drop off children at the school at doors before departing. The front long (South of school) contains 64 parking stalls with 2 ADA parking stalls in the lot, with an additional 3 ADA parking slots along the drop-off lane. These are also used by staff and for temporary parking for parents like above. Parents will parallel park along S. Royal Eagle Lane and W. English Sparrow Trail

<b>Crosswalk Locations and Usage</b>
<b>Comments:</b> School zone lights start at 3:20 PM, and run until 4:00 PM. Intersections without crosswalk utilizing cross pan are a slip hazard in cold and wet conditions. Pedestrian traffic to school begins at 3:23 PM. Flaggers are deployed from school to the three connecting crosswalks at 3:25, and return to the school by 3:40. Children and parents overwhelmingly use crosswalks with flaggers than any other route to cross street.

## Roadway Characteristics

### Speed Limit(s) and Location(s):

The school is located at the northwest corner of S. Royal Eagle Lane and W English Sparrow Trail. Both of these roads are normally 25 MPH roads, lowered to 20 MPH in the school zone. South Royal Eagle Road is the notable local street connecting the school to the nearest major road, Wildcat Reserve Parkway. S. Royal Eagle Road is normally a 30 MPH road, lowered to 20 MPH in the school zone.

### Signage:

Storage lane on side of school is a fire lane and is signed as no parking. Front lot is signed for one way flow throughout. Exit of front parking lot had two entrances, but the entrance on the now-exit side is closed with a chain

### Bike Lanes:

There are no bike lanes leading to or around the school.

### Other Comments:

Steep curbs around the school except at loading/unloading locations. Curbs in surrounded neighborhood are round.

## Sight Visibility Challenges

### Comments:

Mild sun glare for Southbound traffic along S Royal Eagle Lane and at exit of front lot and unloading lane. Mild sun glare for westbound traffic along W. English Sparrow Trail. S. Eagle Valley Way has poor visibility on its one defining turn, and poor visibility at the stop sign intersection with S. Royal Eagle Lane. The Front Lot drop-off lane has poor visibility to the eastmost crosswalk on the left turn into the drop-off lane.

## Congestion Areas

### Comments:

W. English Sparrow Trail with its' two stop sign intersections at S. Royal Eagle Ln and S. Royal Eagle Trail see some congestion, along with queue backing up along S. Royal Eagle Lane.

## General Traffic Observations

### Comments:

Some children and staff leave school earlier at 3:00. Bus arrives at 2:45 and leaves at 3:25. Main surge of traffic out of site ends around 3:35, with remaining parents trickling out afterwards.



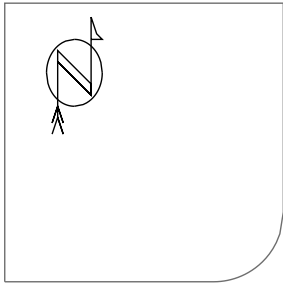
## **Appendix B    Crash Diagrams and Listings**

# WILDCAT RESERVE PKWY & ROYAL EAGLE ST

2019 - 2024

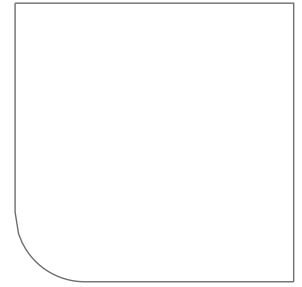
2 Crashes

Clear

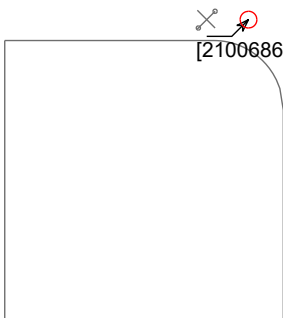


[220085650]

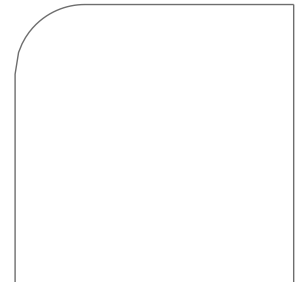
Royal Eagle



Wildcat Reserve



[210068602]



- ← Straight
- ←+ Stopped
- ← Unknown
- ↔ Backing
- ↔ Overtaking
- ↔ Sideswipe

- Parked
- Weaving
- Changing Ln
- Right turn
- Left turn
- U-turn

- Pedestrian
- Bicycle
- Injury
- Fatality
- Nighttime
- DUI

- 3rd Vehicle
- Motorcycle
- Overturn

- Fixed objects:
- General
  - Public Obj
  - Animal
  - Private Obj

# WILDCAT RESERVE PKWY & ROYAL EAGLE ST

2019 - 2024

2 Crashes

Clear

Casetrackingid	Accidenttime	Accidentdate	Primarystreet	Crossstreet	Onroadaddress	Numberinjured	Numberkilled	Harmfulevent1
210068602	7:06 am	8/24/2021	WILDCAT RESERVE PKWY	ROYAL EAGLE ST		1	0	Bicycle / Motorized Bicycle
220085650	3:26 pm	10/27/2022	WILDCAT RESERVE PKWY	ROYAL EAGLE ST		0	0	School Age To/ From School



## **Appendix C School Questionnaire**

## Review: DCSD Traffic and Pedestrian Safety Questionnaire

Respondent

8 Anonymous

05:03

Time to complete

1. What school do you represent?

Score / 0 pts

Saddle Ranch Elementary

2. Please provide your name.

Score / 0 pts

Allison Hawk

3. Please provide your email.

Score / 0 pts

amhawk@dcsdk12.org

4. Please provide feedback on crosswalks. Are crosswalks provided in adequate locations? Do families in general abide by crosswalk locations? Are additional crosswalk locations desired?

Score / 0 pts

We have multiple crosswalks on two sides of our building and most people abide by them. We could possibly use on in our parking lot at the western end of it, but the crosswalks across major roads seem sufficient.



5. Please provide feedback on pickup/drop-off. Score / 0 pts  
Where are your schools pickup and drop-off locations? Is there adequate length or do vehicle queues extend on to public roadways?

We have two drop off/pick up zones: one on the east side of building and one on south side of building. Both of them get used although the one on east side has more traffic. Cars extend a little onto public roadways on that side (Royal Eagle Lane) but not for very long.

6. If available, can you provide your school's written pickup and drop-off procedures? Please send to [nick.westphal@dibblecorp.com](mailto:nick.westphal@dibblecorp.com). Score / 0 pts

No answer provided.

7. Please provide feedback on parking lot safety. Is there an adequate number of parking spaces? Are there any sight visibility challenges when exiting a parking lot (e.g. parked vehicles blocking views)? If so, where? Score / 0 pts

I feel like both lots of generally safe with good drivers. The southern lot has visibility challenges when cars park too close to the exit.

8. Please provide feedback on roadway safety. Do vehicles in general follow traffic laws such as speed limits, stop signs, no parking zones, etc.? Score / 0 pts

Yes

9. Does your school have a designated bus drop-off area? Are there any conflicts between buses and other vehicles?

Score / 0 pts

Yes we have designated bus drop off. Right now, we have no issues but we only have one SPED bus that picks up two children so impact will be different if there is a true bus route.

10. Please provide any general information related to vehicle and pedestrian safety at or around your school that you would like to share.

Score / 0 pts

No answer provided.