



MOUNTAIN RIDGE MIDDLE
SCHOOL

Traffic Memorandum

Project Number: 1124175

Prepared For: Douglas County
School District

March 2, 2025

Revised:

April 7, 2025

DIBBLE



MOUNTAIN RIDGE MIDDLE SCHOOL

Traffic Memorandum

Highlands Ranch, Colorado

Project Number: 1124175

Prepared For: Douglas County School District
Planning and Construction
2808 Highway 85, Building B
Castle Rock, Colorado 80109

March 2, 2025
Revised:
April 7, 2025



Nicholas J Westphal, PE
Project Manager

Dibble & Associates Consulting Engineers, Inc., dba Dibble





Table of Contents

1. EXECUTIVE SUMMARY	2
2. INTRODUCTION.....	4
2.1 Study Purpose and Scope	4
2.2 Study Area.....	4
2.3 School Description.....	5
3. EXISTING CONDITIONS	6
3.1 Site Observation	6
3.2 Roadway Network	6
3.3 Traffic Safety Analysis	9
4. PROJECTED SITE TRAFFIC IMPACTS	10
4.1 Projected Traffic	10
4.2 Mitigation.....	11
5. CONCLUSIONS/RECOMMENDATIONS.....	13

List of Figures

Figure 1 – Vicinity Map	4
Figure 2 – Mountain Ridge Bus Service Map	5
Figure 3 – Wildcat Reserve Parkway at Summit View Parkway	7
Figure 4 – Wildcat Reserve Parkway at Poston Parkway/ Timberchase Trail.....	8
Figure 5 – Vehicles Parking in Bike Lane on Summit View Parkway	11
Figure 6 – Parking Lot Reconfiguration	12

List of Tables

Table 1 – Roadway Characteristics	8
Table 2 – Annual Crash Summary.....	9
Table 3 – Feeder School Projected Enrollments.....	10
Table 4 – Projected Enrollment with Consolidation	10

Appendices

Appendix A Site Observation Notes	A
Appendix B Crash Diagrams and Listings.....	B

1. EXECUTIVE SUMMARY

Douglas County School District is considering options for consolidating schools in Highlands Ranch, Colorado. One consolidation option involves having 6th grade students move to their respective middle school. The Mountain Ridge Middle School (Mountain Ridge) consolidation includes 6th grade students from Bear Canyon, Copper Mesa, Heritage, Northridge, Sand Creek, and Summit View Elementary schools. This Traffic Memorandum reviews existing traffic and provides potential mitigation measures for current traffic and potential increased traffic challenges due to increased enrollment caused by school consolidations.

Mountain Ridge contains one large parking area that is shared with the adjacent Mountain Vista High School. This large parking area is divided into four lots. The northwest lot is for Mountain Vista High School staff and visitor parking and also is the start of the pick-up and drop-off queue for both schools. The northeast lot is for Mountain Ridge staff parking and is the pick-up and drop-off area for Mountain Ridge. The center-west lot is for bus services, and the large southern lot is for students and additional visitor parking. Bus service is provided to students within the attendance boundary, but more than two miles from the school.

The projected 2028-2029 combined enrollment is 618 students if 6th Grade is retained at the elementary level and 853 students if 6th Grade is moved to the middle schools. These projected enrollment numbers respectively represent a decrease of 27% and an increase of 1% from the existing Mountain Ridge enrollment.

Consolidation of the schools will increase traffic at Mountain Ridge with more vehicles using on-street parking, the school parking lot, and the pick-off/drop-off lanes. This will increase impacts to the surrounding roadways during pick-up and drop-off times. In addition, more vehicles and pedestrians will be traveling across Wildcat Reserve Parkway, potentially leading to safety challenges.

Although historic enrollment levels suggest Mountain Ridge could accommodate the increased traffic, more vehicles and pedestrians are expected. To address existing and potential future traffic challenges the following mitigation measures are recommended:

- Analyze the ability to expand bus service to the middle school by reducing the walking radius around the school. Increased bus service was not analyzed as a required mitigation but could provide efficiency to the pick-up and drop-off by having additional buses and less personal vehicles.
- Consider installing additional no parking signs along Summit View Parkway and coordinate with Douglas County to evaluate.
- Reconfigure the parking areas to allow for greater storage length for queued vehicles on the property by completing the following:
 - Switch the high school staff/visitor parking lot and the bus parking lot. The bus parking and bus pick-up/drop-off area will move to the north parking lot. The median at the exit of the north parking lot will need to be shortened to allow for buses to turn north out of the parking lot.
 - Restripe the current bus parking lot to provide parking spaces for personal vehicles. Considerations for accessible parking will need to be considered.
 - Provide a break in the concrete/sidewalk between the existing bus parking lot and large southern parking lot to connect the parking areas on the west end. The break will be at the west end and will provide the ability for vehicles to queue around both parking lots.
 - Provide striping for two travel lanes around the proposed queue loop, one for parking and one for passing.
 - High school pick-up and drop-off will occur around the existing bus parking lot.



- Middle school pick-up and drop-off will occur on the west side of the middle school and/or in the existing staff/visitor parking lot.
- Widen the exit drive to provide 2 exits lanes north of the middle school parking lot.

2. INTRODUCTION

2.1 Study Purpose and Scope

The purpose of this Traffic Memorandum is to discuss the existing traffic patterns at Mountain Ridge Middle (Mountain Ridge) and potential mitigation measures for current traffic and potential increased traffic due to increased enrollment caused by school consolidations.

The scope of this memorandum includes assessing school driveways, nearby intersections, school parking lots, school drop-off and pick-up locations, traffic flow, bicycle and pedestrian facilities, and general traffic challenges at Mountain Ridge.

2.2 Study Area

Mountain Ridge Middle School is located at 10585 Mountain Vista Ridge in the southern region of Highlands Ranch. The access drive to the school is located approximately 1,800 feet west of Poston Parkway. The parcel number for the property is 222923100006. Mountain Ridge Middle School is located within immediate proximity to Mountain Vista High School. The two schools share many facilities, including a parking lot. A vicinity map showing the school's location is provided as **Figure 1**.

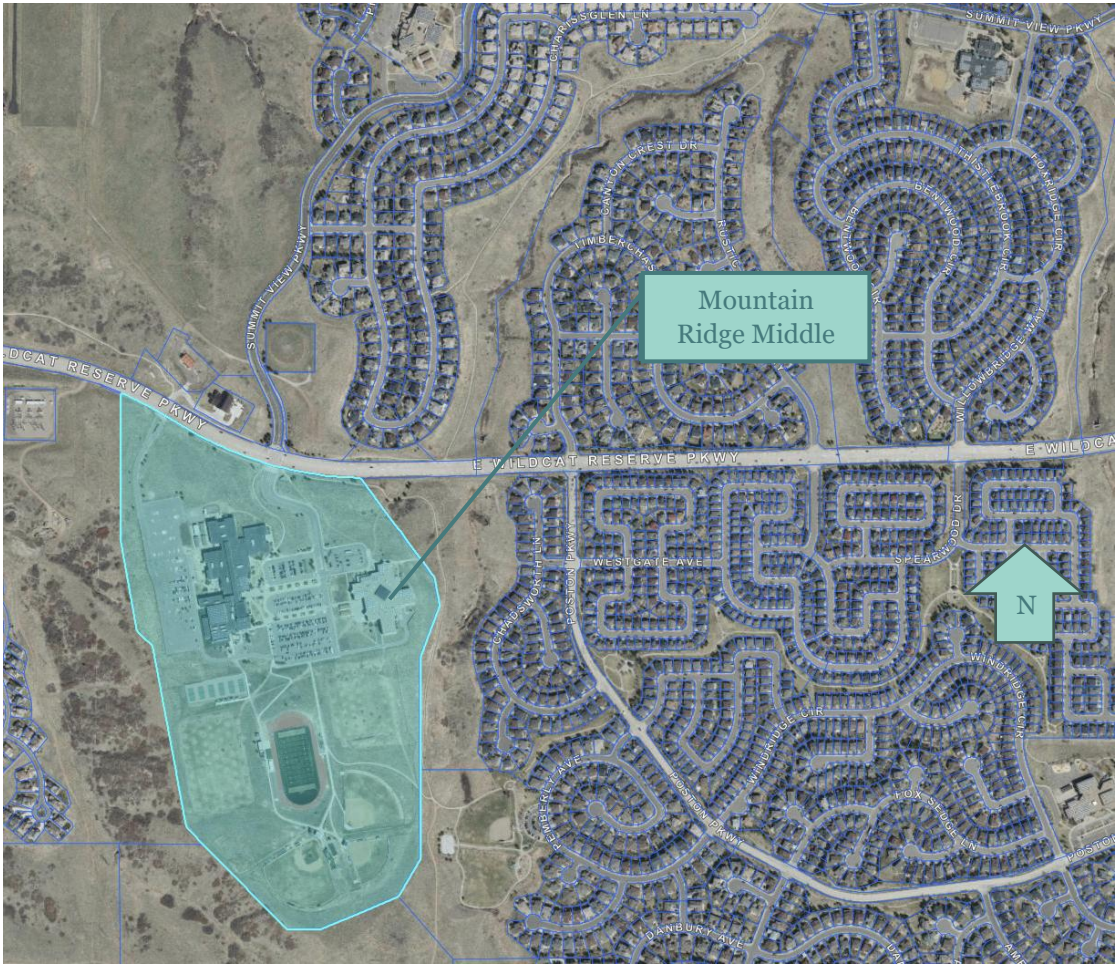


Figure 1 – Vicinity Map

Neighborhood local and collector streets are analyzed for safety challenges, bicycle and pedestrian facilities, parking availability, and queueing lengths. Larger intersections at arterial streets are analyzed for the same items, but also for accident history.

2.3 School Description

Mountain Ridge has a start time of 7:30 AM and an end time of 2:45 PM. Mountain Ridge has one access drive from Wildcat Reserve Parkway, which is named Mountain Vista Ridge, and is shared with Mountain Vista High School. The access drive, Mountain Vista Ridge, has two dedicated left turn lanes, a dedicated right turn lane, and a through lane on its approach to Wildcat Reserve Parkway. There are no designated pick-up and drop-off lanes for Mountain Ridge, they are shared with the parking lot circulation. The intersection of Mountain Vista Ridge and Wildcat Reserve Parkway is signalized and contains pedestrian crosswalks. Mountain Ridge has a maximum Capacity of 1,850 students but the largest enrollment since 2013 is 1,192 students.

School bus service is provided at Mountain Ridge. Douglas County School District’s policy is for bus service to only be provided to middle school students within the school’s attendance boundary, and outside of a designated two-mile waling radius. **Figure 2** depicts Mountain Ridge’s local attendance boundary, which is comprised of the attendance boundaries of Copper Mesa, Heritage, Summit View, Bear Canyon, Northridge, and Sand Creek Elementary Schools. The orange circle represents the 2-mile walking radius. As of November 2024, 323 individuals are eligible to receive bus service, and 204 individuals have used the bus service which is a 63 percent rate.

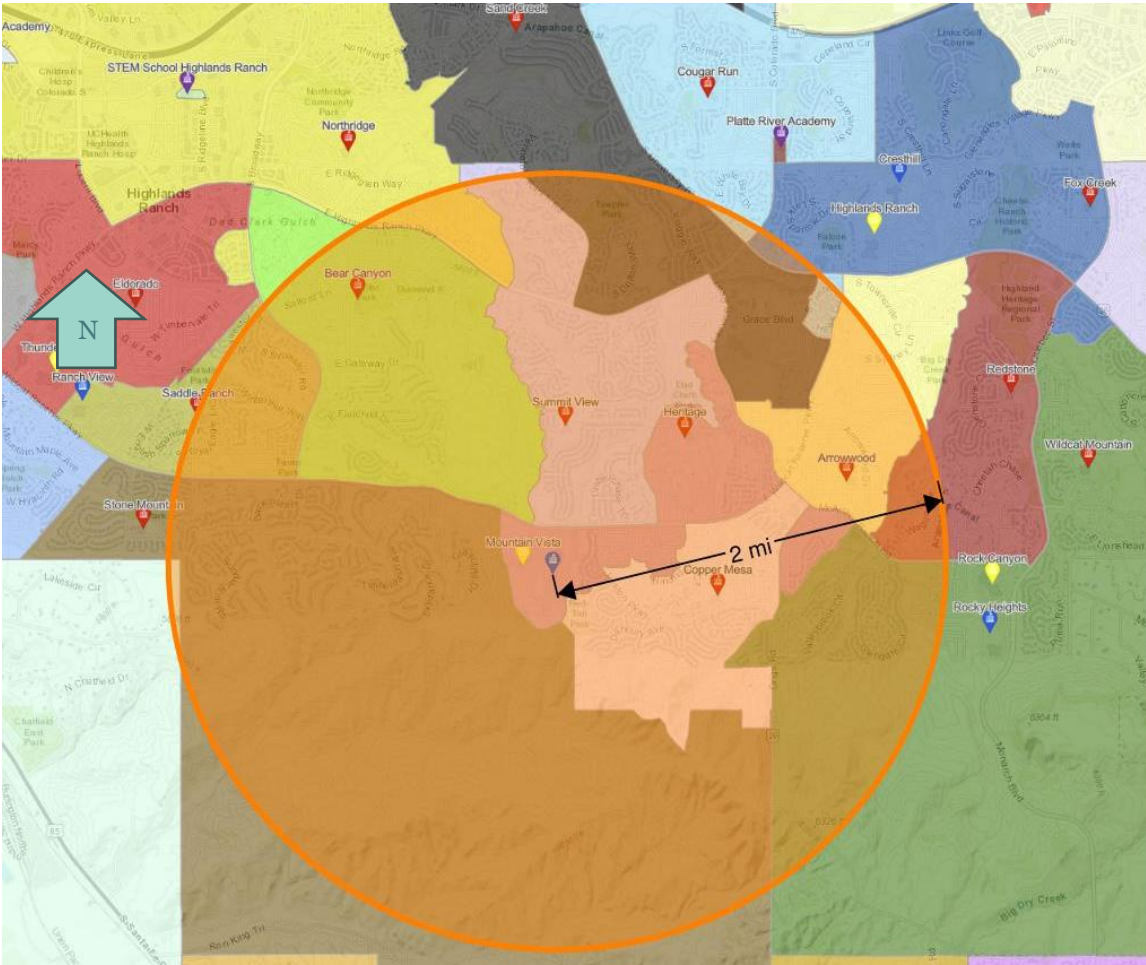


Figure 2 – Mountain Ridge Bus Service Map

3. EXISTING CONDITIONS

3.1 Site Observation

A site observation was performed at Mountain Ridge on November 14, 2024. Field notes from the site observation are included in **Appendix A**. The morning site observation was conducted from 6:45 AM through 8:15 AM and the afternoon site observation was conducted from 2:00 PM through 3:30 PM. Key observations included:

- Parking in bike lane on Summit View Parkway
- Poor internal circulation patterns
- Pick-up and drop-off queues extending north on Summit View Parkway and East on Wildcat Reserve Parkway

3.2 Roadway Network

The Highlands Ranch roadway network is maintained by Douglas County. Mountain Ridge is situated just south of Wildcat Reserve Parkway. Summit View Parkway serves as the entrance to the campus and does not carry any non-school-related traffic.

Wildcat Reserve Parkway at Summit View Parkway

The intersection of Wildcat Reserve Parkway at Summit View Parkway is a signalized intersection with protected left-turn lanes/phases on both approaches for Wildcat Reserve Parkway and the northbound approach of Summit View Parkway. The southbound approach of Summit View Parkway has permissive and protected lanes/phases for left turns. **Figure 3** shows an aerial of the intersection with the current intersection layout.

Wildcat Reserve Parkway has two through lanes in each direction. The westbound approach has two dedicated left-turn lanes but no dedicated right-turn lane. The eastbound approach has one dedicated left-turn lane and one dedicated right-turn lane. The northbound approach of Summit View Parkway exits the parking lot for Mountain Vista High School and Mountain Ridge Middle School. This approach has one through lane, two dedicated left-turn lanes, and one dedicated right-turn lane. The southbound approach to Summit View Parkway has one through lane, one dedicated right-turn lane, and one dedicated left-turn lane. Bike lanes are present for both directions of Wildcat Reserve Parkway and also on both directions of Summit View Parkway to the north of the intersection.



Figure 3 – Wildcat Reserve Parkway at Summit View Parkway

Wildcat Reserve Parkway at Poston Parkway/Timberchase Trail

The intersection of Wildcat Reserve Parkway at Poston Parkway and Timberchase Trail is a signalized intersection with protected/permissive left-turn lanes/phases for all four approaches. **Figure 4** shows an aerial of the intersection with the current intersection layout.

Wildcat Reserve Parkway has two through lanes and a dedicated left-turn lane in each direction. The southbound approach of Timberchase Trail has only one lane for all three possible turning movements. The northbound approach of Poston Parkway has a dedicated left-turn lane and a shared right turn lane. Bike lanes are present for both directions on Wildcat Reserve Parkway. Bike lanes on Poston Parkway run in both directions, but merge with traffic before the intersection.



Figure 4 – Wildcat Reserve Parkway at Poston Parkway/ Timberchase Trail

Roadway Characteristics

General features of the roadways in the vicinity of Mountain Ridge are summarized in **Table 1**.

Table 1 – Roadway Characteristics

Roadway	Poston Parkway	Wildcat Reserve Parkway
Speed Limit	30 mph	45 mph
Number of Through Lanes	2	4
Lane Width	12 feet	12 feet
Bike Lane Width	6 feet*	5 feet
Median	None	Striped
On-Street Parking	North side near school	None

*Bike lane width is measured from stripe to flowline

**Becomes 4 lanes north of Poston Parkway

3.3 Traffic Safety Analysis

Intersection Crash Analysis

Crash history was reviewed at the intersection of Wildcat Reserve Parkway at Royal Eagle Road and Weathersfield Way. Crashes were reviewed for the period between 2019 and 2024. **Table 2** Summarizes the year-by-year crash data for the intersections.

Crash diagrams and a listing of crashes are provided in **Appendix B**.

Wildcat Reserve Parkway at Summit View Parkway

There was a total of 23 crashes at Wildcat Reserve Parkway at Summit View Parkway over the course of the study period. Four of these involved injuries. Of the 23 crashes, 7 involved a left turn, and 4 were at night. One of these accidents involved a 3rd vehicle and none involved a bicycle.

Table 2 – Annual Crash Summary

Year	Wildcat Reserve Parkway & Summit View Parkway
2019	7
2020	2
2021	3
2022	3
2023	3
2024	5

School Safety

Students are picked up and dropped off primarily via the parking lot to the northwest of the school building. Long queues extend from the parking lot along Summit View Parkway, back to Wildcat Reserve Parkway and beyond. On-street parking is not provided or permitted at this location. Bike lanes are not present on Summit View Parkway but are present along Wildcat Reserve Parkway. There is also a concrete trail to the east of the school that can accommodate bikes and scooters. Crosswalks are present throughout the parking lot. Four crossing guards direct traffic at these crosswalks.

4. PROJECTED SITE TRAFFIC IMPACTS

4.1 Projected Traffic

Douglas County School District (DCSD) is considering a potential school consolidation option that would place all 6th grade students from Mountain Ridge’s feeder schools at Mountain Ridge. **Table 3** provides data on student enrollment for the feeder elementary schools and Table 4 provides projected enrollments for Mountain Ridge.

Table 3 – Feeder School Projected Enrollments

School	2023-2024 PK-12 Enrollment	2023-2024 K-12 Enrollment	Projected 2028-2029 PK-12 Enrollment	Projected 2028-2029 K-12 Enrollment
Bear Canyon	362	335	233	206
Copper Mesa	322	290	211	179
Heritage	378	355	345	322
Northridge	565	565	484	484
Sand Creek	336	295	257	216
Summit View	370	349	259	238
Total	2,333	2,189	1,789	1,645
Total 6 th Grade Students (1/7 of total)		313		235

Table 4 – Projected Enrollment with Consolidation

School	Ideal Capacity per DCSD	Maximum Historic Enrollment	2023-2024 Enrollment	Projected 2028-2029 Enrollment (No 6 th Grade)	Projected 2028- 2029 Enrollment (With 6 th Grade)
Mountain Ridge	1,280	1,192	842	618	853

The projected 2028-2029 enrollment for Mountain Ridge Middle School is 618 students if 6th grade is retained at the elementary schools and 853 students if 6th grade is moved to the middle school. This represents a 27% decrease and a 1% increase from the 2023-2024 enrollment respectively.

Since enrollment is not projected to be more than 10 percent of the maximum historic enrollment, traffic data was not collected. However, increased traffic is still expected at Mountain Ridge with the consolidated schools. As depicted in **Figure 2**, much of the Mountain Ridge Middle attendance area is outside of the designated two-mile walking radius. Therefore, a large portion of the elementary school attendance would be bused.

Consolidation of the schools will increase traffic at Mountain Ridge with more vehicles using the school parking lot and the pick-off/drop-off lanes. This will increase impacts to the surrounding roadways during pick-up and drop-off times. In addition, more vehicles and pedestrians will be traveling across Wildcat Reserve Parkway, potentially leading to safety challenges.

4.2 Mitigation

Based on site observations and feedback from the Mountain Ridge Administration, Mountain Ridge faces the following challenges:

- Queuing beyond the intersection of Summit View Parkway at Wildcat Reserve Parkway.
- Parking in bike lane on Summit View Parkway
- Queue for middle school parking lot caused delays for all traffic on southbound Summit View Parkway

Additional no parking signs should be installed on both sides of Summit View Parkway to discourage parking in the northbound bike lane and the southbound right-turn lane.

Figure 5 depicts the bike lane that currently experiences blockage due to illegal parking. The district should also consider allocating more buses to Mountain Ridge or allowing bus service to students living within 2 miles of the school. Doing so will significantly decrease queue length leading to the school.



Figure 5 – Vehicles Parking in Bike Lane on Summit View Parkway

DCSD should consider modifications to the parking lot configuration and pick-up and drop-off lanes internal to the Mountain Ridge and Mountain Vista High School parking lot. The following improvements could be implemented to improve internal circulation and allow additional vehicles to queue onsite.

- Relocated the bus loop to the existing Mountain Vista High School visitor parking lot. This may require modification to the median on the main entrance drive to accommodate buses turning out of the parking lot towards Wildcat Reserve Parkway.
- Relocate the existing Mountain Vista High School visitor parking lot to the existing bus loop.
- Connect the existing bus loop to the southern most parking lot on the west side to create a potential for a larger pick-up/drop-off loop.

- Create drop-off and pick-up procedures that route traffic through the main parking areas per the orange routing on **Figure 6**. High school students would use the area on the west side of the main access and middle school students would use the area on the east side of the parking lot.

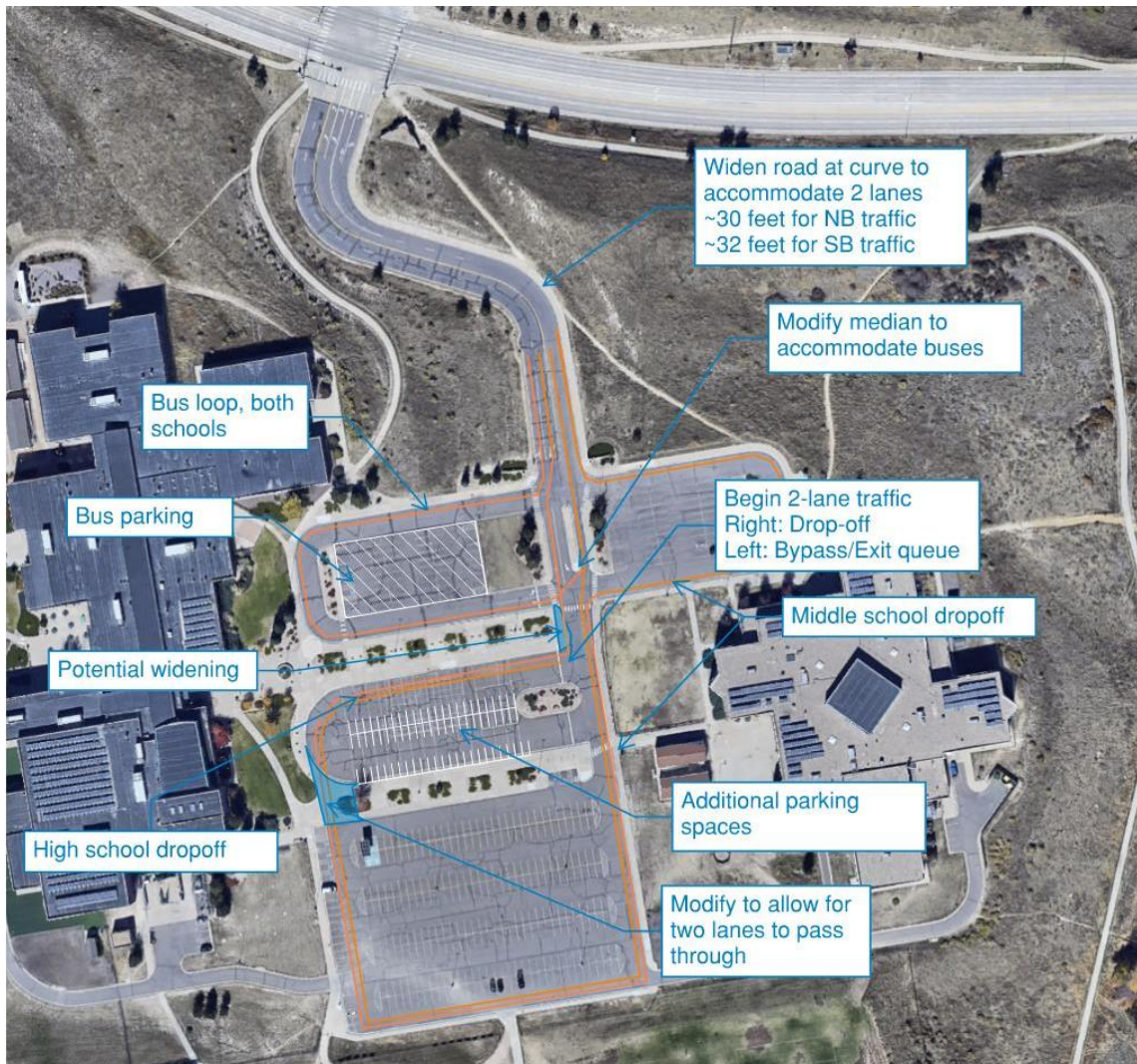


Figure 6 – Parking Lot Reconfiguration

5. CONCLUSIONS/RECOMMENDATIONS

This traffic memorandum addresses existing traffic patterns and potential traffic challenges at Mountain Ridge Middle School, while considering anticipated increase in traffic due to the possible consolidation with 6th grades from the feeder elementary schools.

Traffic will be increased with the additional enrollment, but additional bus service will be offered, limiting the impact of the increased enrollment. Although historic enrollment levels suggest Mountain Ridge could accommodate the increased traffic, more vehicles and pedestrians are expected. To address existing and potential future traffic challenges the following mitigation measures are recommended:

- Analyze the ability to expand bus service to the middle school by reducing the walking radius around the school. Increased bus service was not analyzed as a required mitigation but could provide efficiency to the pick-up and drop-off by having additional buses and less personal vehicles.
- Consider installing additional no parking signs along Summit View Parkway and coordinate with Douglas County to evaluate.
- Reconfigure the parking areas to allow for greater storage length for queued vehicles on the property by completing the following:
 - Switch the high school staff/visitor parking lot and the bus parking lot. The bus parking and bus pick-up/drop-off area will move to the north parking lot. The median at the exit of the north parking lot will need to be shortened to allow for buses to turn north out of the parking lot.
 - Restripe the current bus parking lot to provide parking spaces for personal vehicles. Considerations for accessible parking will need to be considered.
 - Provide a break in the concrete/sidewalk between the existing bus parking lot and large southern parking lot to connect the parking areas on the west end. The break will be at the west end and will provide the ability for vehicles to queue around both parking lots.
 - Provide striping for two travel lanes around the proposed queue loop, one for parking and one for passing.
 - High school pick-up and drop-off will occur around the existing bus parking lot.
 - Middle school pick-up and drop-off will occur on the west side of the middle school and/or in the existing staff/visitor parking lot.
 - Widen the exit drive to provide 2 exits lanes north of the middle school parking lot.

**Minor grammatical changes were made on April 7, 2025 to provide additional clarity.*



Appendix A Site Observation Notes

TRAFFIC OBSERVATION REPORT

Project Name	DCSD HR TIS	Project No.	1124175
Observer	Nick Westphal, PE		
Location	Mountain Ridge Middle School Internal Site		
Time	6:45 - 8:15	AM	
		DATE	11/11/2024
		M	T W Th F S S

Queueing Data

Start Time: 6:45 AM

End Time: 8:00 AM

Maximum Queueing Length:

Traffic queueing extended well beyond the signalized intersection.

Total Storage Length Available:

Comments:

Vehicles were starting to enter the parking lot and drop off students prior to 6:45 AM. A steady flow of vehicles was present by 7:00 AM. All High School and Middle School dropoff traffic is directed right towards the High School traffic along the curb and Middle School traffic interior. The two lanes then complete a weaving motion to allow the Middle School traffic to exit straight to the Middle School parking lot and the High School traffic to exit left. Additional queueing occurred from traffic entering from around the south side of the high school and releasing on the west side of the Middle School.

On-Street Parking Locations and Availability

Comments:

On-street parking is not available and not permitted at this location.

Crosswalk Locations and Usage

Comments:

Crosswalks are present along the main internal roadway. A traffic attendant (starting at 7:05) was present at each intersection/crosswalk and at the front of the middle school (4 total). Traffic was routed via traffic cones between the Middle School and High School drop off areas.

Roadway Characteristics

Speed Limit(s) and Location(s):

The entrance drive to the campus is signed as 20 mph.

Signage:

Bike Lanes:

No dedicated bike lanes are provided internal to the campus. Bikes and scooters can use the sidewalk from the signalized intersection or a concrete trail is available on the east side of the Middle School.

Other Comments:

Sight Visibility Challenges

Comments:

No potential sight visibility conflicts were observed on the site. Long queues of traffic and snow piles blocked some visibility, but parking attendants directed traffic.

Congestion Areas

Comments:

The most congested area was the loop around the High School drop off area. Vehicles were only allowed to enter the Middle School drop off area if curb space was available causing traffic to be stopped in the High School drop off area. This stopped traffic extended back to Wildcat Reserve Parkway.

General Traffic Observations

Comments:

Parking lot was 50% full by 6:45 and completely full by 7:10.

There may have been more parent drop offs and less walkers due to the cold conditions.

5 buses entered the parking lot with the first being around 7:12. Buses have a separate dropoff area.

First bell rang at 7:25 and the 2nd bell rang at 7:30. Queue for middle school traffic didn't end until 7:40.

Queue for High School didn't end until 7:50. HS parking traffic started heading to south lot around 7:40.

TRAFFIC OBSERVATION REPORT

Project Name	DCSD HR TIS	Project No.	1124175
Observer	Nick Westphal, PE		
Location	Mountain Ridge Middle School Internal Site		
Time	1:45 - 3:30	PM	
		DATE	11/11/2024
		M	T W Th F S S

Queueing Data

Start Time: 1:45 PM

End Time: 3:30 PM

Maximum Queueing Length:

Traffic queueing extended at least to the Wildcat Signal.

Total Storage Length Available:

Comments:

Vehicles started queueing at 1:45 and was full along the north building side by 2:00 when an additional queue started along the west side of the building. The High School side of the queue loop was full along the curb by 2:12 and a second lane was started which is not encouraged by the school. The double lane was full by 2:30 and appeared to extend to the Wildcat shortly after. Another queue was started in the south parking lot and appeared to extend around the majority of the parking lot. Some of the vehicles entering that queue were coming from the west side of the High School.

On-Street Parking Locations and Availability

Comments:

On-street parking is not available and not permitted at this location.

Crosswalk Locations and Usage

Comments:

Crosswalks are present along the main internal roadway. A traffic attendant was present just after 3:30 and stopping southbound traffic at the first intersection (all traffic is forced into High School Loop). One traffic attendant was directing traffic at the second intersection and one for a short period of time at the bus loop crosswalk prior to the buses leaving. The traffic attendant noted that their overtime starts at 3:15, so they stop directing traffic then. Traffic was free flowing again at 3:15.

Roadway Characteristics

Speed Limit(s) and Location(s):

The entrance drive to the campus is signed as 20 mph.

Signage:

Bike Lanes:

No dedicated bike lanes are provided internal to the campus. Bikes and scooters can use the sidewalk from the signalized intersection or a concrete trail is available on the east side of the Middle School.

Other Comments:

Sight Visibility Challenges

Comments:

No potential sight visibility conflicts were observed on the site. Long queues of traffic and snow piles blocked some visibility, but parking attendants directed traffic.

Congestion Areas

Comments:

The most congested area was the loop around the High School drop off area. Vehicles were only allowed to enter the Middle School drop off area if curb space was available causing traffic to be stopped in the High School drop off area. This stopped traffic extended back to Wildcat Reserve Parkway.

General Traffic Observations

Comments:

It is noted that the Fire Station can cause irregular signal cycles which backs up the exit drive.
Some cars are doing U-turns in entrance drive by picking up their students prior to entering the High School loop.
The right-turn and left-turn exit lanes alternate backing up to the internal intersections.
Backups happened after the buses were released. ±9 buses at 2:58.
Significantly more walkers in the afternoon than in the morning.
The left turn out of the High School loop has a tight radius due to the median.

TRAFFIC OBSERVATION REPORT

Project Name	DCSD HR TIS	Project No.	1124175
Observer	Derek Williams, EI		
Location	Mountain Ridge Middle School at Wildcat Reserve Pkwy and Summit View Pkwy		
Time	6:45 - 8:15	AM	DATE 11/11/2024
			M T W Th F S S

Queueing Data

Start Time: 6:55 AM

End Time: 7:52 AM

Maximum Queueing Length:

Total Storage Length Available:

Comments:

School traffic arrived from each direction on Wildcat Reserve Parkway from Summit View Parkway. However, the majority of vehicles arrived via westbound Wildcat Reserve Parkway, using the right-hand turn lanes to begin queueing on Summit View Parkway.

On-Street Parking Locations and Availability

Comments:

On-street parking is not available and not permitted at this location.

Crosswalk Locations and Usage

Comments:

The intersection of Wildcat Reserve Parkway and Summit View Parkway has pedestrian crossings at each approach. Several students utilized the crosswalks to cross both streets. Many students were observed riding electric scooters or bikes across the crosswalk.

Roadway Characteristics

Speed Limit(s) and Location(s):

Wildcat Parkway has a posted speed limit of 45 mph. Summit View Parkway has a speed limit of 20 mph approaching the school.

Signage:

Bike Lanes:

Bike lanes are provided along Wildcat Reserve Parkway and at the north intersection approach along Summit View Parkway.

Other Comments:

The intersection of Wildcat Reserve Parkway and Summit View Parkway is signalized. A double storage lane is provided on Wildcat Reserve Parkway for vehicles turning left into the school and single storage lane is provided for vehicles turning right into the school.

Sight Visibility Challenges

Comments:

No potential sight visibility conflicts were identified near the intersection.

Congestion Areas

Comments:

Queuing along Summit View Parkway backed-up to the intersection at Wildcat Reserve Parkway. Due to the back-up, many vehicles turning left onto Summit View Parkway did not clear the intersection before the signals changed, obstructing traffic along the east-bound through lanes on Wildcat Reserve Parkway. At around 7:35, school traffic turning left from Wildcat Reserve Parkway into the school surpassed the storage lane and turning vehicles queued in the painted median. Traffic from this direction backed up to the next intersection at Timberchase Trail.

General Traffic Observations

Comments:

One vehicle was observed dropping off a student in the northbound bike lane along Summit View Parkway near the intersection.

TRAFFIC OBSERVATION REPORT

Project Name	DCSD HR TIS	Project No.	1124175
Observer	Derek Williams, EI		
Location	Mountain Ridge Middle School at Wildcat Reserve Pkwy and Summit View Pkwy		
Time	2:00-3:30	AM	
		DATE	11/11/2024
		M	T W Th F S S

Queueing Data

Start Time: 1:50 PM

End Time: 2:23 PM

Maximum Queueing Length:

Total Storage Length Available:

Comments:

At 2:20 some traffic was trickling out of the queue. The queue had backed to the intersection at 2:38. The queue had spilled into the right hand turning lane on Wildcat Reserve Parkway. Little traffic arrived from the Left hand turn lane. The queue moved up from the intersection at 2:57. The queue dissipated at 2:23.

On-Street Parking Locations and Availability

Comments:

On-street parking is not available and not permitted at this location.

Crosswalk Locations and Usage

Comments:

Noticeably more students were using the crosswalks at Wildcat Reserve Parkway and Summit View Parkway in the afternoon. The crosswalks at this location utilize push buttons with a digital hand signal at each corner. Students mostly crossed in groups.

Roadway Characteristics

Speed Limit(s) and Location(s):

Wildcat Parkway has a posted speed limit of 45 mph. Summit View Parkway has a speed limit of 20 mph approaching the school.

Signage:

No parking signs along with no U-turn signs are located on Summit View.

Bike Lanes:

Bike lanes are provided along Wildcat Reserve Parkway and at the north intersection approach along Summit View Parkway.

Other Comments:

Sight Visibility Challenges

Comments:

No potential sight visibility conflicts were identified near the intersection.

Congestion Areas

Comments:

No major congestion was observed at the intersection.

General Traffic Observations

Comments:

One vehicle was observe parked in the left hand turn lane on Wildcat Reserve Parkway. Many parents parked in the northbound bike lane on Summit View Parkway.



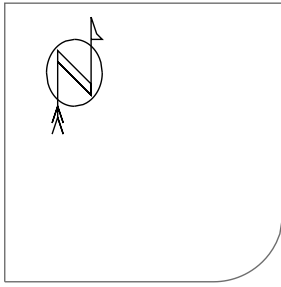
Appendix B Crash Diagrams and Listings

WILDCAT RESERVE PKWY & SUMMIT VIEW PKWY

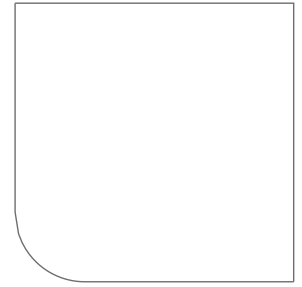
2019 - 2024

23 Crashes

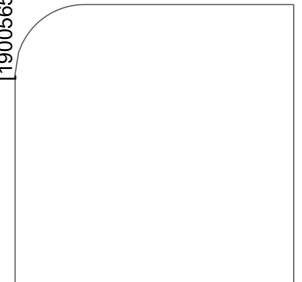
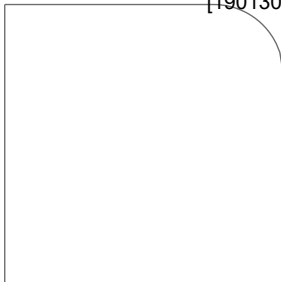
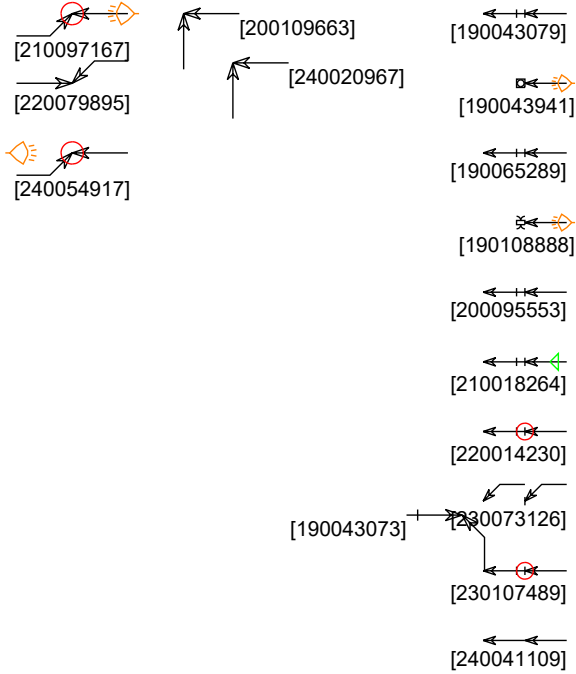
Clear



Summit View



Wildcat Reserve



- | | | | |
|--------------|---------------|--------------|-----------------|
| ← Straight | ▭ Parked | ⊗ Pedestrian | ◁ 3rd Vehicle |
| ←+ Stopped | ⚡ Weaving | ⊗ Bicycle | ←-M- Motorcycle |
| ← Unknown | ⚡ Changing Ln | ○ Injury | ←○ Overturn |
| ↔ Backing | ↘ Right turn | ● Fatality | |
| ↔ Overtaking | ↙ Left turn | 🕒 Nighttime | |
| ↔ Sideswipe | ↺ U-turn | 🚫 DUI | |
- Fixed objects:**
- | | |
|--------------|---------------|
| □ General | ⊗ Animal |
| ⊠ Public Obj | ⊠ Private Obj |

WILDCAT RESERVE PKWY & SUMMIT VIEW PKWY

2019 - 2024

23 Crashes

Clear

Casetrackingid	Accidenttime	Accidentdate	Primarystreet	Crossstreet	Onroadaddress	Numberinjured	Numberkilled	Harmfuleventl
190043073	2:54 pm	4/10/2019	WILDCAT RESERVE PKWY	SUMMIT VIEW PKWY		0	0	Front to Side
190043079	3:19 pm	4/10/2019	WILDCAT RESERVE PKWY	SUMMIT VIEW PKWY		0	0	Front to Rear
190043941	6:46 am	4/13/2019	WILDCAT RESERVE PKWY	SUMMIT VIEW PKWY		0	0	Light Pole/Utility Pole
190056527	2:00 pm	5/13/2019	SUMMIT VIEW PKWY	WILDCAT RESERVE PKWY		0	0	Front to Rear
190065289	3:51 pm	6/4/2019	WILDCAT RESERVE PKWY	SUMMIT VIEW PKWY		0	0	Front to Rear
190108888	12:35 am	9/27/2019	WILDCAT RESERVE PKWY	SUMMIT VIEW PKWY		0	0	Wild Animal
190130943	3:08 pm	11/22/2019	WILDCAT RESERVE PKWY	SUMMIT VIEW PKWY		0	0	Front to Rear
200095553	3:05 pm	10/20/2020	WILDCAT RESERVE PKWY	SUMMIT VIEW PKWY		0	0	Front to Rear
200109663	4:14 pm	12/10/2020	WILDCAT RESERVE PKWY	SUMMIT VIEW PKWY		0	0	Front to Side
210018264	2:50 pm	3/4/2021	WILDCAT RESERVE PKWY	SUMMIT VIEW PKWY		0	0	Front to Rear
210080680	3:02 pm	10/5/2021	SUMMIT VIEW PKWY	WILDCAT RESERVE PKWY		0	0	Front to Side
210097167	5:30 pm	12/5/2021	SUMMIT VIEW PKWY	WILDCAT RESERVE PKWY		1	0	Front to Side
220000980	11:22 am	1/5/2022	WILDCAT RESERVE PKWY	SUMMIT VIEW PKWY		0	0	Front to Rear
220014230	11:56 am	2/23/2022	WILDCAT RESERVE PKWY	SUMMIT VIEW PKWY		0	0	Front to Rear
220079895	12:07 pm	10/6/2022	WILDCAT RESERVE PKWY	SUMMIT VIEW PKWY		0	0	Front to Side
230056962	8:16 pm	7/3/2023	WILDCAT RESERVE PKWY	SUMMIT VIEW PKWY		0	0	Front to Side
230073126	7:35 am	8/23/2023	WILDCAT RESERVE PKWY	SUMMIT VIEW PKWY		0	0	Front to Rear
230107489	3:00 pm	12/17/2023	WILDCAT RESERVE PKWY	SUMMIT VIEW PKWY		2	0	Front to Rear
240005315	2:58 pm	1/17/2024	WILDCAT RESERVE PKWY	SUMMIT VIEW PKWY		0	0	Front to Rear
240020967	3:40 pm	3/2/2024	WILDCAT RESERVE PKWY	SUMMIT VIEW PKWY		0	0	Front to Side
240041109	3:13 pm	5/3/2024	WILDCAT RESERVE PKWY	SUMMIT VIEW PKWY		0	0	Front to Front
240042693	3:02 pm	5/8/2024	WILDCAT RESERVE PKWY	SUMMIT VIEW PKWY		0	0	Front to Rear
240054917	10:14 pm	6/12/2024	WILDCAT RESERVE PKWY	SUMMIT VIEW PKWY		0	0	Front to Side