



KIS CENTER FOR  
ENVIRONMENT AND  
HUMANITY

strategic  
**PRIORITIES**

## TRANSFORM KIS' FUTURE WITH YOUR SUPPORT: JOIN KIS IN MAKING A DIFFERENCE

Join KIS for an exciting opportunity to amplify the impact of your philanthropic and CSR efforts. Kodaikanal International School (KIS) is eager to forge partnerships that support our mission to nurture transformative leaders for a just and sustainable world.

### Why Partner with KIS?

KIS is more than a school; it's a catalyst for positive global change. Our educational mission extends to empowering students to be leaders, caring individuals, and champions for justice and sustainability. Investing in our initiatives means investing in a future where education seeds a legacy of learning, empowerment, and excellence.

### Empowering Through Philanthropy: Our Initiatives

- **KIS Center for Environment and Humanity (CEH):** KIS CEH spearheads environmental education and conservation in the Palani Hills through place-based experiential learning, emphasizing the unique setting and challenges of the Western Ghats.

Let's embark on this transformative journey together. Explore the programs that you can support through your philanthropic and CSR contributions.

## A SCHOOL THE WORLD NEEDS

### Education with a Global Perspective

With a rich heritage spanning over a century, Kodaikanal International School (KIS) has been producing graduates who can thrive far beyond the classroom.

The school's greatest strength lies in its learning as a community – living together in an assortment of cultures, distinct faiths and varied experiences from across the globe. Embedded in a comprehensive educational system focused on the individual, the school's commitment to quality education, global diversity, and a continuous learning process empowers its students to be citizens of the world. The natural beauty and moderate montane climate of Kodaikanal adds to the warmth of its international community life. It is an ideal setting for learning!

### KIS Vision

We strive to be a school the world needs: Our graduates will be transformative leaders, caring humans and thoughtful ambassadors for a just, sustainable and peaceful world.

### KIS Mission

Kodaikanal International School (KIS) is committed to empowering young people from diverse backgrounds with vision, knowledge, compassion and cross-cultural understanding. We are a community that welcomes everyone and seeks our purpose in the life and teachings of Jesus Christ.

## KIS CENTER FOR ENVIRONMENT AND HUMANITY

Located in the Palani Hills—a biodiversity hotspot in the southern Western Ghats— The Kodaikanal International School (KIS) Center for Environment and Humanity (CEH) is dedicated to fostering environmental awareness, education, and action in Kodaikanal and its surrounding communities. We aim to engage students, local residents, visitors, and decision-makers in understanding the unique ecology of the Palani Hills, the threats it faces, and the sustainability practices necessary for local and global environmental protection. The Center offers experiential learning programs, research opportunities, and leads community-driven conservation projects, all designed to develop practical solutions to pressing environmental issues.

Several projects are currently in the pipeline, with substantial multi-crore capital costs being scoped by appointed architects and planning teams. Your support for these projects would be invaluable. Please note that donations are restricted, meaning funds can only be used for purposes specified by donors.



### Infrastructure Project

We plan to enhance the KIS Center for Environment and Humanity (KIS CEH) at Swedish Hill with a focus on transforming it into a world-class environmental research and education facility. Key components include major renovations to the existing heritage building and minimal new construction designed to improve both sustainability and functionality.

We are prioritizing environmentally-focused and student-centered infrastructure improvements to create a campus that is self-sufficient. Beyond serving as a hub for learning and collaboration, the campus will function as a living demonstration of sustainable building and land management, showcasing energy, water, and waste independence in Kodaikanal.

The upgraded facility will feature a visitor center, indoor and outdoor learning spaces, an environmental science lab, a conference hall, and accommodation for up to 40 students.

In addition, the outdoor space will include the following:

- An outdoor exhibit on biodiversity conservation and innovative sustainable technologies.
- Showcase of solar technologies including conventional solar photovoltaics above auditorium, cafeteria and on solar gazebos, solar BIPV skylights above visitors' center/reception, solar site lighting.
- Eco-friendly pavers for walking trails and driveways/ parking.
- Zero energy natural waste-water treatment and re-use system.



Rendering of the outdoor space of the new KIS Center for Environment and Humanity.

- Eco-friendly storm water management including bio-swales, ponds and sumps.
- Vegetation and landscaping that demonstrates local land-use including shola forests, farms, and orchards.

**Total Projected Cost:** Rs 12 Cr  
(Approx. USD 1,500,000)

Please see the specific projects requiring funding in the next section.

This estimate includes costs for building renovations, internal fixtures, and technology. Please note that the final costing will be provided upon completion of the technical design phase.



Renderings of the outdoor spaces of the new KIS Center for Environment and Humanity.



Renderings of some of the indoor spaces.



### Renewable Technologies

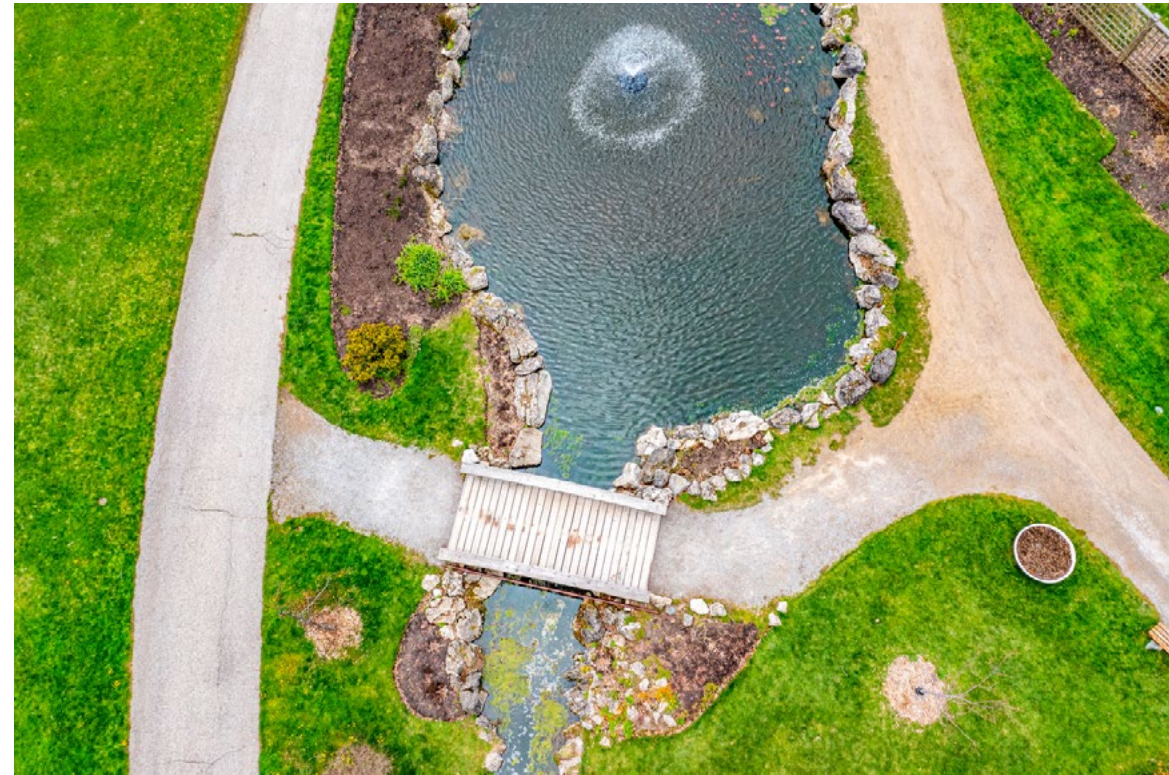
The installation of solar photovoltaic panels above the auditorium and cafeteria, along with solar gazebos and solar-integrated skylights at the visitor center, will showcase renewable energy solutions in action. These technologies will not only reduce the campus's carbon footprint but also serve as a model of sustainable energy use for the community. The natural wastewater treatment and reuse system will further minimize environmental impact, providing a live demonstration of how to manage resources efficiently and sustainably, contributing to environmental protection.

**Projected Cost:** Rs. 92 Lakhs  
(Approx. USD 110,000)

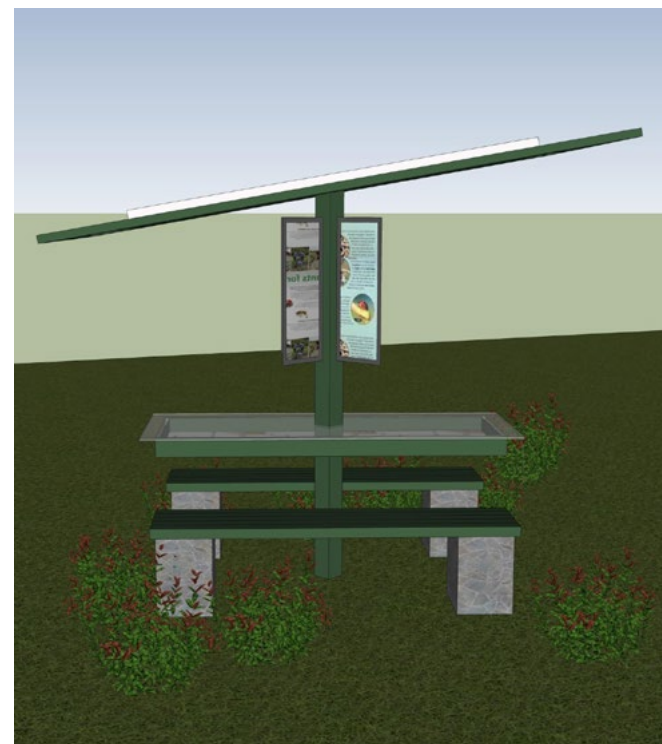
**Solar Energy Technology:**  
Rs. 69.5 Lakhs (Approx. \$83,000)

**Circular Water Technology:**  
Rs. 22.5 Lakhs (Approx. \$27,000)

This estimate includes costs for building renovations, internal fixtures, and technology. Please note that the final costing will be provided upon completion of the technical design phase.



Circular Water Technology Reference Picture: For illustration purposes only.



Solar Technology Reference Picture: For illustration purposes only.

### Biodiversity Research and Learning

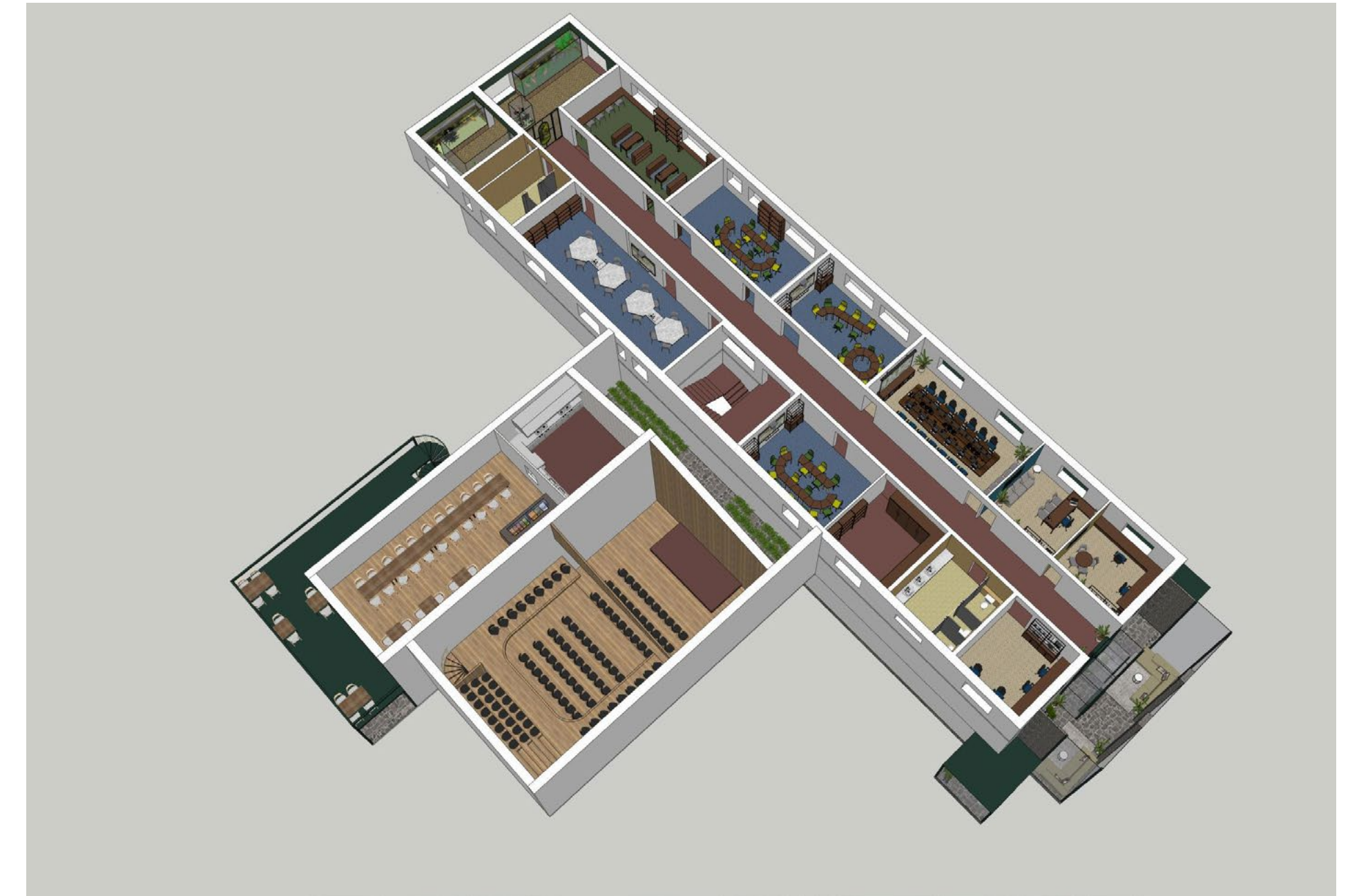
These spaces will be the heart of learning at CEH and will include an environmental science lab, biodiversity exhibits and training rooms, and a library. It will enable CEH to host deep dive workshops and courses that empower students and the local community. The library will provide access to valuable research, and the biodiversity exhibit will serve as an interactive space for learning about the rich flora and fauna of the region, promoting conservation awareness. The science lab will be a hub for hands-on environmental research and experimentation providing practical skills and contributing to ongoing conservation efforts in the Palani Hills.

**Projected Cost:** Rs. 52 Lakhs  
(Approx. USD 62,000)

**Environmental Science Lab:**  
Rs. 12 Lakhs (Approx. \$14,000)

**Biodiversity Exhibits, Library, and Training Rooms:**  
Rs. 40 Lakhs (Approx. \$48,000)

This estimate includes costs for building renovations, internal fixtures, and technology. Please note that the final costing will be provided upon completion of the technical design phase.



Biodiversity Exhibits, Library, and Training Rooms Initial Renderings. For illustration purposes only.

### Indian Climate Experience

KIS CEH has crafted the Indian Climate Experience, a comprehensive and immersive exhibition that weaves together science, culture, civic engagement, and technology. This experience is designed to deepen students’ understanding of the profound impacts of climate change, both globally and specifically in Kodaikanal. Through interactive exhibits, immersive displays, and thought-provoking installations, the Indian Climate Experience showcases the progress and lessons learned from climate action in the Palani Hills, India, and beyond. Highlights include “Life in a Forest,” featuring camera trap footage of local wildlife, and a bicycle-powered wind turbine that demonstrates alternative energy. The exhibit will be housed on the ground floor of KIS CEH, a 2,200-square-foot open-concept space.

The space will feature 19 interactive exhibits. Here are a few examples of the topics for these exhibits:

- **Welcome video:** The Palani Hills. This video is designed to immerse visitors in the exhibit, and set the context for the Indian Climate Experience with community consultation outputs, drone footage and a welcome animation.
- **Captured Carbon Exhibit:** To demonstrate how different elements retain heat through large shatter-proof glass jars, a sun lamp, thermometers. This will be communicated through touch and feel, a small science experiment.
- **Slices of Soil Exhibit:** To demonstrate the concept of fast carbon, and how soil is connected to the mitigation and adaptation of carbon emissions through the cycle of carbon sequestration, tree felling and burning, and grasslands.

- **Biodiversity & Climate Change Exhibit:** To connect the biodiversity of the Palani Hills to the mitigation of climate change, and to get the visitors to feel what it is like to be in a forest.
- **Life in a Forest:** To connect the biodiversity of the Palani Hills to the mitigation of climate change. To understand natural environments without human presence or intervention.
- **Birds and Biodiversity:** To make visitors aware about birds as a key indicator of healthy ecosystems. The exhibit will encourage visitors to support endemic bird populations through small acts like plating native trees and keeping bird baths at home.
- **“Your community needs all of you!” Exhibit:** To demonstrate the power of collaboration and community efforts through a short collaborative game.

To experience the 3D rendering of the Indian Climate Experience, please [click here](#).

**Projected Cost:** Rs 2.6 Cr (Approx. USD 310,000)

This estimate includes costs for materials, labor, transportation, and production of the exhibition.



3D rendering of the Indian Climate Experience.



Exhibit examples of the Indian Climate Experience.



### Junior Naturalist Action Network (J-NAN)

The Junior Naturalist Action Network (J-NAN) selects 50 students annually from Kodaikanal and its surrounding areas who aspire to higher education and careers in sustainability, conservation, or environmental science. This program specifically targets students from government and government-aided schools, with the aim of fostering a prosperous future for Kodaikanal by nurturing knowledgeable and skilled local youth. Over a 23-week certificate course each academic year, J-NAN equips students with the knowledge and skills to become environmental champions within their communities, preparing them to lead sustainable initiatives and projects. We are currently actively seeking support for the JNAN Class of 2026 (2025-26 Academic Year).

**Annual Budget Requirement:** Rs 20 Lakhs (Approx. USD 24,000)

This budget is allocated to cover scientific tools and equipment, workshops, field trips, guest speakers, educational materials, and student activities.



**For inquiries regarding contributions, please contact our Development Officer, at [development@kis.in](mailto:development@kis.in).**

**Every partnership paves the way for a brighter future.**