



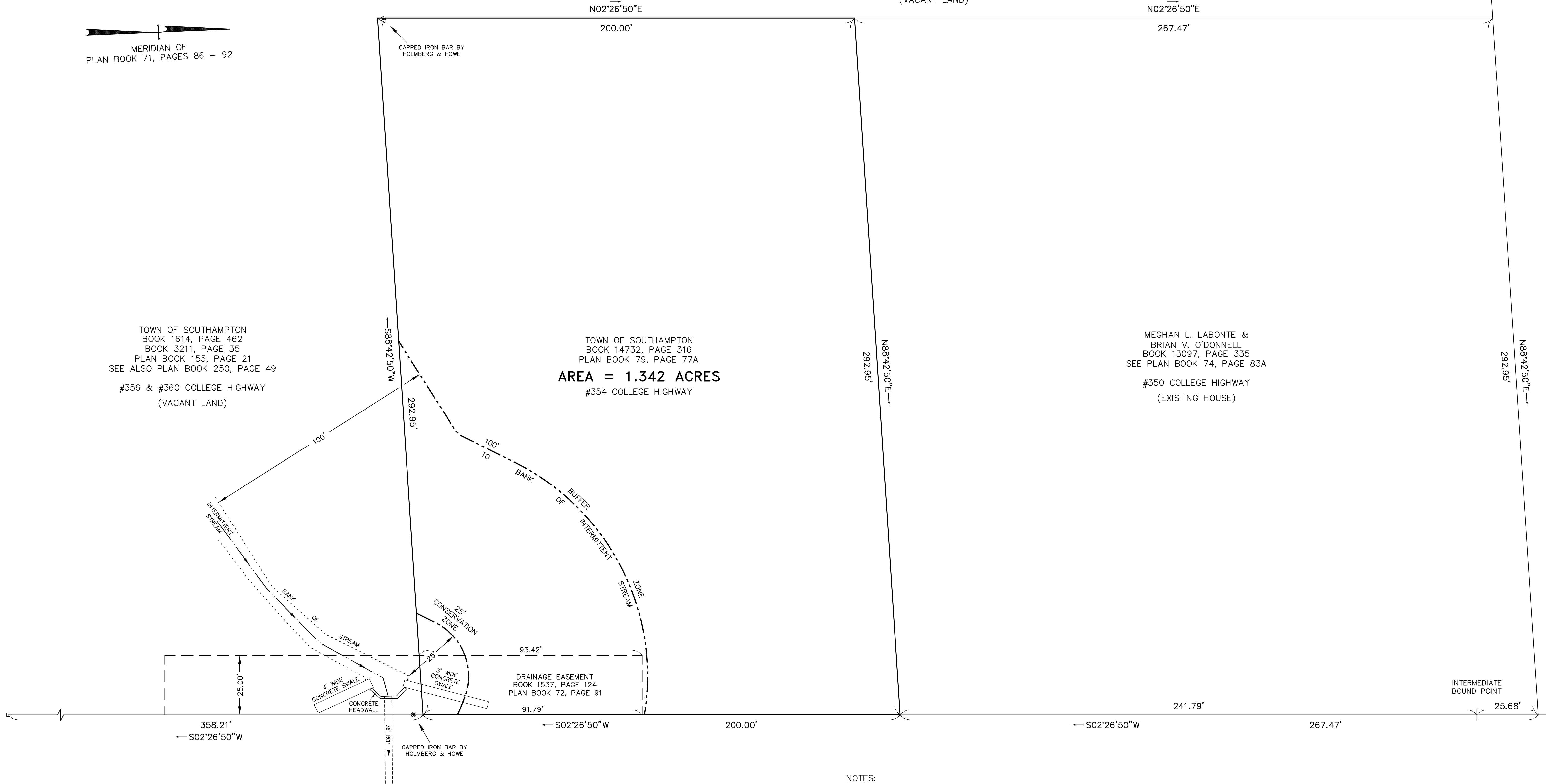
TOWN OF SOUTHAMPTON
 BOOK 1614, PAGE 462
 SEE ALSO PLAN BOOK 250, PAGE 49

#356 COLLEGE HIGHWAY
 (VACANT LAND)

TOWN OF SOUTHAMPTON
 BOOK 1614, PAGE 462
 BOOK 3211, PAGE 35
 PLAN BOOK 155, PAGE 21
 SEE ALSO PLAN BOOK 250, PAGE 49
 #356 & #360 COLLEGE HIGHWAY
 (VACANT LAND)

TOWN OF SOUTHAMPTON
 BOOK 14732, PAGE 316
 PLAN BOOK 79, PAGE 77A
AREA = 1.342 ACRES
 #354 COLLEGE HIGHWAY

MEGHAN L. LABONTE &
 BRIAN V. O'DONNELL
 BOOK 13097, PAGE 335
 SEE PLAN BOOK 74, PAGE 83A
 #350 COLLEGE HIGHWAY
 (EXISTING HOUSE)



COLLEGE HIGHWAY ~ ROUTE 10
 A 1968 STATE HIGHWAY ALTERATION
 PLAN BOOK 72, PAGES 86 - 92

NOTES:

1. WETLAND BOUNDARIES SHOWN HEREON WERE DELINEATED ON JULY 26, 2024 BY GZA GEOENVIRONMENTAL, INC. 1350 MAIN STREET, SUITE 1400, SPRINGFIELD, MA 01103. SEE "WETLAND ASSESSMENT AND DELINEATION FINDINGS REPORT" PREPARED BY GZA, DATED AUGUST 2, 2024.
2. SEE WPA FORM 2 - DETERMINATION OF APPLICABILITY, DATED DEC. 17, 2024, ISSUED BY THE SOUTHAMPTON CONSERVATION COMMISSION WITH A POSITIVE DETERMINATION #6, "THE FOLLOWING AREA AND/OR WORK, IF ANY, IS SUBJECT TO A MUNICIPAL ORDINANCE OR BYLAW, BUT NOT SUBJECT TO THE MASSACHUSETTS WETLAND PROTECTION ACT: ANY LAND ALTERATION IN THE 100' BUFFER TO AND THE ISOLATED WETLAND ITSELF.", AND NEGATIVE DETERMINATION #6, "THE AREA AND/OR WORK DESCRIBED IN THE REQUEST IS NOT SUBJECT TO REVIEW AND APPROVAL BY THE SOUTHAMPTON CONSERVATION COMMISSION" AND ITS WETLAND BY-LAW, ART. XXVI. SEE REQUEST FOR DETERMINATION OF APPLICABILITY (RDA) FILED ON NOV. 18, 2024 AND ON FILE WITH THE SOUTHAMPTON CONSERVATION COMMISSION.

LEGEND	
CONCRETE BOUND FOUND	□
IRON BAR FOUND	●
EDGE OF EASEMENT	---
CENTERLINE OF INTERMITTENT STREAM	- - - - -
BANK OF STREAM
25' CONSERVATION ZONE	-----
100' BUFFER ZONE	-----

PLAN OF LAND IN
SOUTHAMPTON, MASSACHUSETTS
 SURVEYED FOR
TOWN OF SOUTHAMPTON

SCALE: 1" = 20'

DATE: AUGUST 5, 2024
 REVISED: DECEMBER 30, 2024

HERITAGE
 LAND SURVEYING & ENGINEERING, INC.

241 COLLEGE HIGHWAY & CLARK STREET
 POST OFFICE BOX 90
 SOUTHAMPTON, MASSACHUSETTS 01073-0090
 (413) 527-3900
 INFO@HERITAGESURVEYS.COM

BRUCE A. COOMBS
 No. 27814
 REG. STATE PROFESSIONAL LAND SURVEYOR

JOB # 8634-240618 DWG # 8634ToS1 MAP # 8634-241230