


# Multilingual Learners

November 5, 2024



# Who Is A Multilingual Learner?

- A student who comes from an environment where a language other than English is spoken or understood and may have an impact on their English language development.

 **DEPARTMENT OF EDUCATION**  
Townsend Building  
401 Federal Street Suite 2  
Dover, Delaware 19901-3539  
http://education.delaware.gov

Mark A. Holodick, Ed.D.  
Secretary of Education  
(302) 739-4000  
(302) 739-4554 - fax

**Delaware Department of Education Home Language Survey**

Date: \_\_\_\_\_ School: \_\_\_\_\_

The Delaware Department of Education requires schools to determine the language(s) spoken at home by each student. The information provided will only be used to determine whether your student is eligible to begin the English as a Second Language process and will not be used for immigration matters or reported to immigration authorities.

Student Information	
First Name:	Country of birth:
Last Name:	Date of entry in the US:
Birthdate:	Date student first enrolled in a US school:

Circle grades your child attended in US schools  
PK K 1 2 3 4 5 6 7 8 9 10 11 12

How many total months has the student been enrolled in a US school? \_\_\_\_\_

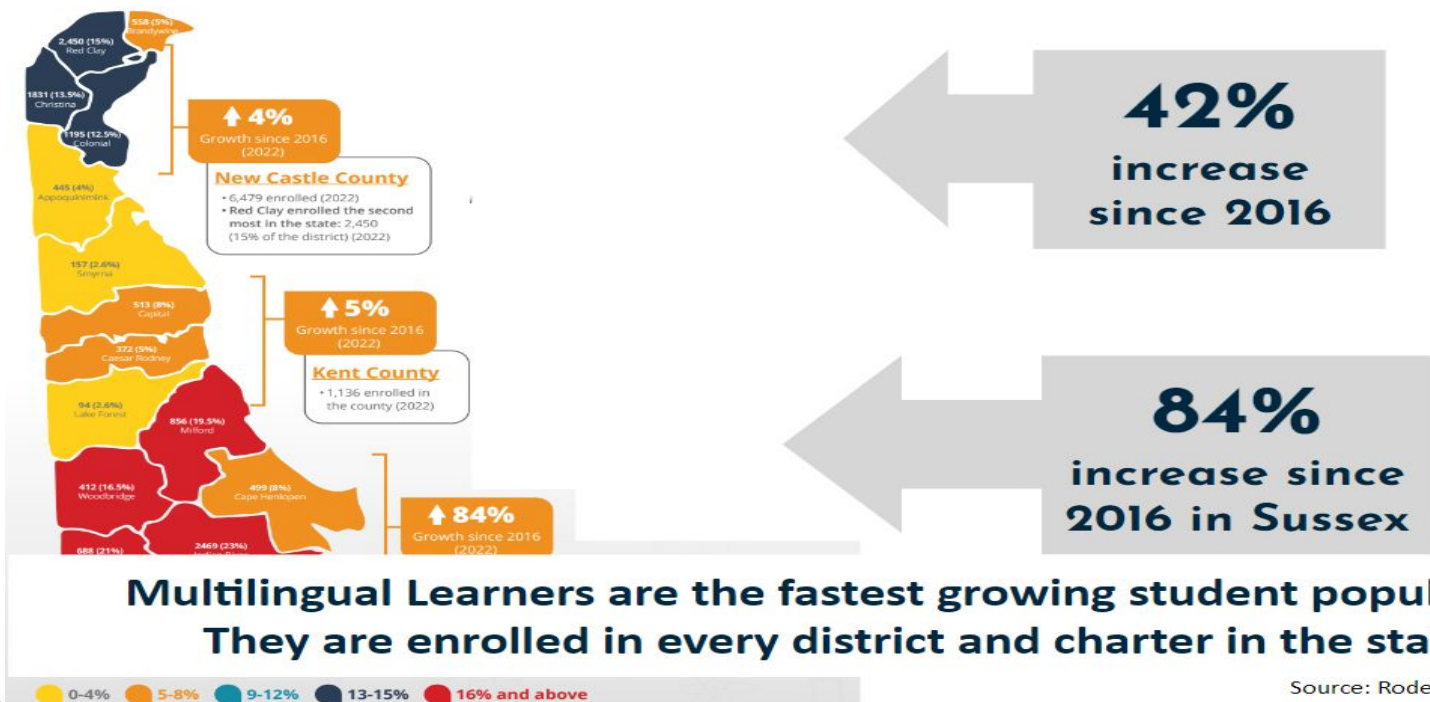
1. What language did your child first learn?  
Language: \_\_\_\_\_ Dialect: \_\_\_\_\_
2. What language does your child most often use at home?  
Language: \_\_\_\_\_ Dialect: \_\_\_\_\_
3. What languages do you most often speak to your child?  
Language: \_\_\_\_\_ Dialect: \_\_\_\_\_
4. What language(s) other than English are spoken in your home?  
Language: \_\_\_\_\_ Dialect: \_\_\_\_\_
5. What language would you prefer to receive information from your school?  
Language: \_\_\_\_\_ Dialect: \_\_\_\_\_

Parent Name: \_\_\_\_\_ Parent Signature: \_\_\_\_\_ Date: \_\_\_\_\_

LHA - Please have all families complete this home language survey at the student's initial assessment in school. This form must be signed and dated by the parent or guardian and kept in the student's file. If a language other than English or non-US English is listed on questions 1-3, the LHA must continue with a second review. Step 2 of the English learner identification process.

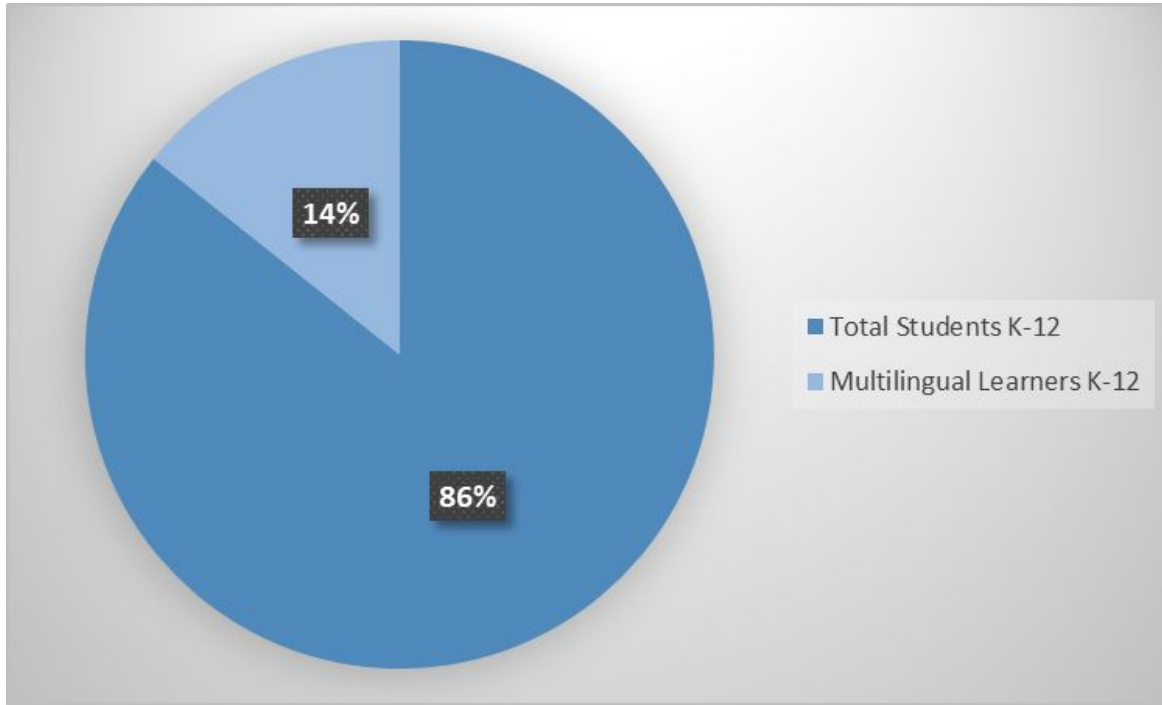


# Delaware Multilingual Learners



Source: Rodel 2022 MLL Fact Sheet

# RCCSD Multilingual Learners



# Languages Spoken in Delaware



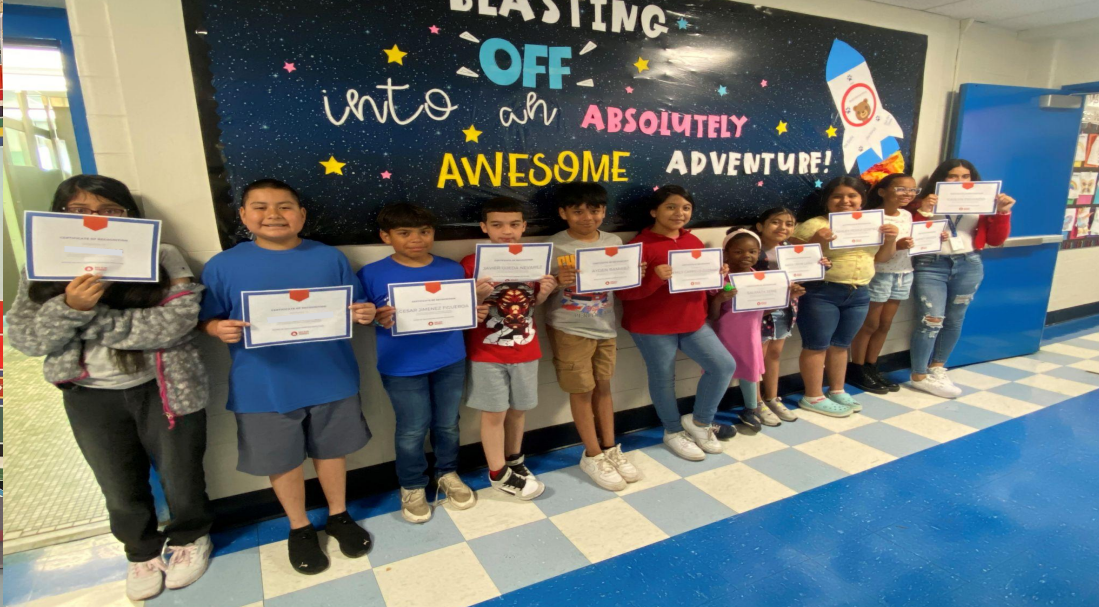
# Languages Spoken in RCCSD

- 50+ languages
- Top 5 are:
  - Spanish
  - Chinese
  - Telugu
  - Arabic
  - Korean



# How Do We Support Our Students?

- After-School Tutoring
- Summer School
- Newcomer Bags
- Bilingual Dictionaries
- Classroom Supports
- ACCESS Goal Setting
- Targeted/Integrated Language Development



# How Do We Support Our Families?

- Parent Meetings
- Translation
- Interpreters
- Hispanic American Association of Delaware
- English Classes
- Red Clay Block Party

# Delaware Education Language Line



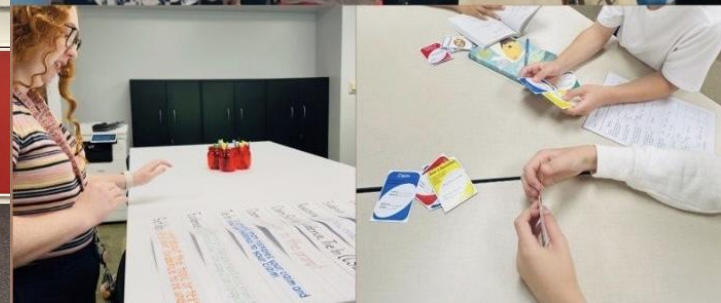
## Multilingual Learner Identification Process and Services

Prepared for MLL Families  
October 2024



# How Do We Support Our Staff?

- Professional Learning
- SIOP Training
- MLL Teacher Academy
- MLL Instructional Coach Support
- Collaboration Across Content Departments
- Conference Opportunities
- Culturegrams
- Classroom Materials



# How Is It All Funded?

- Tuition Funds
- Title III & Title III Immigrant Increase Funds
- Opportunity Funds Grant

# Thank You!

**Carol Beck**

Supervisor of Multilingual Learner Education  
[carolina.beck@redclay.k12.de.us](mailto:carolina.beck@redclay.k12.de.us)



## Connect & Engage



@redclayschools

[www.redclayschools.com](http://www.redclayschools.com)

#RemakableRedClay



**RED  
CLAY**  
CONSOLIDATED  
SCHOOL DISTRICT