

# FRIDAY FLASH

Richland Elementary School

April 4, 2025

## In This Issue

- PTO April Newsletter
- Donate to Earth Day
- Morning Fit Club
- PSSA Testing Information
- Take Your Child to Work Day

## Quick Links

- [Richland Elementary School](#)
- [Calendar of Events](#)
- [Breakfast and Lunch Menu](#)
- [Cafeteria Account](#)
- [Richland PTO](#)

## PTO April Newsletter

[Click here to view the PTO's newsletter](#) outlining important dates during the month of March.



## Donate to Earth Day

Even if you can't attend Earth Day at Pine Park, you can still contribute! Please consider sending one recyclable shopping bag to school by **April 24**. There will be a collection box in the lobby.



## Morning Fit Club

Rise and shine! Are you ready to kickstart your day with a burst of energy and positivity? Join the Morning Fit Club! Sessions start on **Thursday, April 24**, at 8:00 am and run for six weeks before school.

[Read More](#)

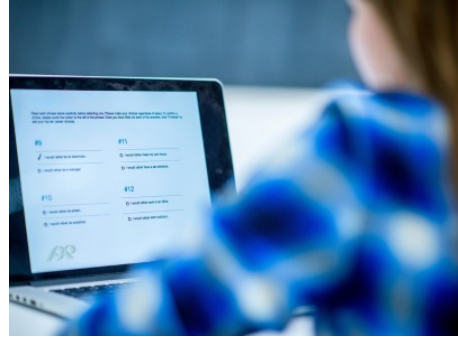


## In Case You Missed It

### PSSA Testing Information for 3rd Grade

Third-grade PSSAs are scheduled for **April 22 to April 29**. Students are encouraged to arrive on time, get a good night's sleep, and bring wired headphones and a fully charged Chromebook on test days.

[Read More](#)



## Take Your Child to Work Day

The National Take Our Daughters and Sons to Work Day is recognized on the fourth Thursday in April. Parents are encouraged to use April 24 or choose a date in the summer months.

[Read More](#)



## Sign Up for Mileage Club

Mileage Club is back at Richland Elementary on **April 29 through May 29** to promote joy in movement and lifelong fitness. Each grade will run or walk around the track at recess, earning two hole punches each lap.

[Read More](#)



## Message from the Counselor

Mrs. Molitor will be offering an Eden Hall prep group for third-grade students once a week for four weeks. If you would like for your child to participate, please email [amolitor@pinerichland.org](mailto:amolitor@pinerichland.org) by **Thursday, April 10**.

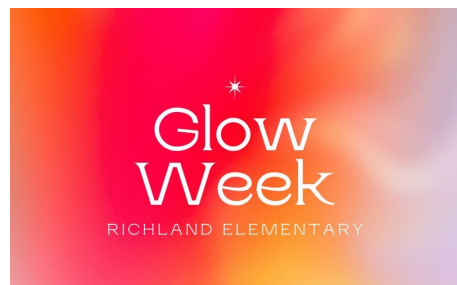
[Read More](#)



## Join Us for Art Glow Week

Students will experience Glow Week as the art room transforms into a neon-lit creative space filled with glowing colors and artistic expression in recognition of students' dedication to positive behavior.

[Read More](#)



## Join Students at Earth Day Event

The entire community is invited to join our 6-School Sustainability Club at Pine Township's Earth Day Event on **Saturday, April 26**, from 11:30 am to 4:00 pm.

[Read More](#)



## Spring Flower Sale

Spring flowers are grown to order and will be delivered just in time for Mother's Day. Order forms and payment due **Monday, March 31**. Pickup on **April 30**.

[Read More](#)



## RAMS Way School Store

The school store will be back up and running in April through the end of the year. The PTO is in need of [volunteers to help students shop](#). Donate to the store through the [Amazon wishlist](#).

[Read More](#)



## Music in Our Schools Month

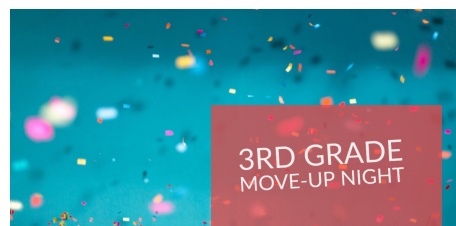
March is Music in Our Schools Month. This year's theme is "united through music". To celebrate, the music teachers will be featuring songs and musicians, music trivia and more.

[Read More](#)



## Taylor Swift Move Up Night

The PRHS Taylor Swift Club presents a night of activities to introduce rising fourth-grade students to each other. Join the fun at Eden Hall on **Friday, April 4**, from 6:00 pm - 8:00 pm. RSVP by **Sunday, March 23**.



[Read More](#)

## Reminders

### Save the Date

[Grade 3 Parents: EHUE Orientation](#)—  
May 12 and 21

### Order Your Yearbook

Visit the [LifeTouch](#) website and use school code 10820725 to access. The last day to order is **Monday, April 7**.

### Save Chick-fil-A Receipts

Chick-fil-A receipts can earn our school rewards! Send receipts to your child's teacher, or email screenshots of mobile receipts to our treasurer at [resptotreasurer@gmail.com](mailto:resptotreasurer@gmail.com).

### Attendance

Every student starts each year with 10 parent-excused absences for educational trips or sick days that don't require medical intervention. After those 10 days, a medical visit is required with a medical excuse. [Learn more](#).

- Friday Flash submissions are due Wednesdays at 8 am to [prnewsletters@pinerichland.org](mailto:prnewsletters@pinerichland.org).
- Check the **Friday Flash Archives** for past information.
- [Review library book titles under 30-day public review](#).



You are receiving this communication because you opted in to email messages from Pine-Richland School District. To update your communication preferences, please click [Update Profile](#) below. If you received this from a friend and would like to subscribe, [you may do so here](#). To unsubscribe from **all** district communications, click the [unsubscribe link](#) below.

Richland Elementary School | 3811 Bakerstown Road | Gibsonia, PA 15044 US

[Unsubscribe](#) | [Update Profile](#) | [Constant Contact Data Notice](#)



Try email marketing for free today!