

BSME Educational Consultancy Directory

BSME Partner Directory

BSME facilitates an invaluable relationship between our schools and over 90 Partners, who provide products and services to schools and staff.

Schools in need of Educational Consultancy can use this brochure to browse trusted BSME Partners. To have a look at our other Partner categories, please visit our [website](#).

Educational Consultancy



Ann Marie Christian

annmariechristian.com | [LinkedIn](#)

Ann Marie is a child protection social worker, qualified in 1996, and has excelled in social work management since 2002. She has worked in several local authority roles, including children's services, based in a secondary school, early years, school improvement team, Local Authority Designated Officer, and youth justice.

In 2008, she was headhunted to deliver child protection training in the UAE and has worked internationally ever since. In 2016, she became a CIS-affiliated safeguarding consultant. In this role, she supports international schools with safeguarding consultancy and training pre- and post-inspection and has worked across various locations globally, including North & Central America, UAE, Europe, Africa, and Southeast Asia. In 2020, she became a BSME safeguarding trainer and consultant and contributed to an online conference, and is still delivering the online accredited Designated Safeguarding Lead training.

She has supported international government departments, universities, and UK-based schools in strengthening safeguarding policy, procedures, and practice by consulting and training stakeholders. She contributed to a post-graduate safeguarding qualification and developed school social work practices at two universities in the UAE. Ann Marie has delivered workshops and keynotes at various international safeguarding conferences including the Caribbean, Southeast Asia, the UK, and the USA.

Ann Marie's online safeguarding courses have not just been successful, they have been a hit. Her courses, designed for the Educare part of TES and the Key for Leaders, have been well-received. She created a bespoke international course with Educare, 'The role of the DSL' in international schools.

Ann Marie is not just a professional; she is an international Guru in safeguarding. Her work has not only been successful but has also earned her a reputation for outstanding knowledge and expertise. This recognition has made her a trusted figure in the industry.



ILM Education Consultants

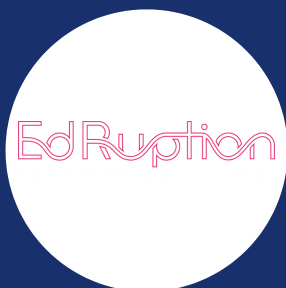
www.ilmeducationconsultants.com | ceo@ilmeducationconsultants.com

ILM Education Consultants and ILM-Connect are at the forefront of enhancing school performance and advancing educational leadership worldwide. We offer a suite of accredited qualifications and bespoke training sessions that are crucial for educational advancement. Under the expert guidance of Iram Myford, a globally acclaimed educational consultant, we specialise in driving substantial improvements in teaching and learning. Our services extend to supporting schools with accreditation processes and preparation for educational inspections, ensuring they meet international standards of excellence.

ILM-Connect, our dynamic platform, connects educators from various regions, facilitating rich exchanges of knowledge and best practices. Members gain exclusive access to professional development workshops, effective networking opportunities, and an extensive collection of resources designed to nurture significant educational growth. We are dedicated to empowering educators and leaders through innovative, research-backed educational strategies that prepare schools to thrive in an evolving educational environment.

BSME Educational Consultancy Directory

Educational Consultancy



EdRuption

www.edruption.com | LinkedIn

EdRuption is committed to bridging the digital divide in schools worldwide by empowering educational institutions with the resources, expertise, and innovative solutions needed to create digitally inclusive learning environments. Guided by our four pillars—Digital Governance, Digital Safeguarding, Digital Curriculum & Teaching, and Innovation—EdRuption ensures a holistic approach to digital transformation in education.

Our team of Apple Distinguished Educators, Google Certified Educators, and other EdTech experts leads digital initiatives that span from STEAM education to curriculum-wide integration across diverse educational systems. We provide tailored support, including bespoke solutions, curriculum alignment, comprehensive digital audits, and full-scale digital strategy implementation.

At EdRuption, we ensure that every project aligns with cutting-edge practices, giving every child, regardless of background, access to high-quality, technology-enhanced education. Our Digital Governance and Safeguarding pillars focus on establishing secure, compliant environments, while Curriculum & Teaching and Innovation empower schools to deliver impactful, future-ready education. Dedicated to long-term impact, EdRuption collaborates with schools to build sustainable digital ecosystems, selecting the most suitable technology for each unique context. Recognizing the importance of family and community involvement, we extend our efforts beyond classrooms, delivering training and support for parents to foster digital literacy at home.

Through our commitment to equity and innovation, EdRuption envisions a future where both schools and communities thrive in a connected, technology-driven world



RS Academics Ltd

www.rsacademics.co.uk | LinkedIn

Education matters. That's why at RS Academics we are relentless in our pursuit to help educational organisations throughout the world to excel.

We draw from our extensive experience and our latest research to deliver sustained and impactful results. Any advice we give you is unique and tailored to your particular situation.



Constellation Group Consultancy and Management

www.constellationgroup.co.uk | LinkedIn

Do you need a school place for your child in the UAE? Choosing the right educational setting for your child is one of the most important decisions that parents make. Can you unpick the gossip from the facts about schools? Are you confused about the different options and districts

BSME Educational Consultancy Directory

Educational Consultancy



CPI

crisisprevention.com | contactus@crisisprevention.com

CPI is more than a training provider—we're a global partner in creating safer schools. Our 360° Behaviour Training Suite helps educators worldwide build positive, supportive environments. With evidence-based solutions for all risk levels, we empower schools to prevent disruption and build cultures of Care, Welfare, Safety, and SecuritySM.



Vamos for Schools Ltd

www.vamosforschools.co.uk | russell.collins@vamoslanguageteaching.co.uk

Schools who require the necessary resources to provide Spanish can leverage the expertise of Vamos.

We have formed an exciting partnership with Learning Resource Network (LRN) to introduce their International GCSE Spanish programme.

As an authorised LRN Delivery Centre, this allows us to support schools that may lack Spanish teachers or resources to provide Spanish qualifications.

Our Spanish courses from KS2 to A level are offered during school time or as an extracurricular enrichment and only require Chromebooks or PCs and one responsible adult.



Zerogram Limited

www.zerogram.co | LinkedIn

'With a large network of specialists, Zerogram can help schools reduce energy costs with affordable energy solutions. Zerogram measures success based on levels of carbon emission savings identified and abated for schools. Our purpose is to help every school achieve its net zero ambitions, through appropriate resourcing and technical expertise.'



Study Options

www.studyoptions.com | LinkedIn

We are a free, independent, expert service helping students study in Australia and New Zealand. We offer advice and counselling to help you choose the right course, at the right university. Study Options is the official representative of Australian and New Zealand universities and is represented in the UAE by John Milne.

BSME Educational Consultancy Directory

Educational Consultancy



Being Luminary

www.beingluminary.co.uk | hello@beingluminary.co.uk

Empowering Leaders to Build Inclusive Organisations Where Everyone Belongs

Being Luminary is a Boutique Diversity, Equity, and Inclusion Consultancy led by Angela Browne. We partner with leaders who bring humility, commitment, and curiosity to help them create exceptional organisations that foster a sense of belonging and safety for all. Through our listening, deepening, and enacting process, we equip leaders with the knowledge, skills, and strategies to drive meaningful change and embrace luminary leadership in the realm of DEI.

Our journey began with a deep-rooted desire to impact the world positively. We recognised the need for organisations to prioritise diversity, equity, and inclusion as a high priority, especially in today's rapidly changing and interconnected society. We saw the potential for organisations to become safe harbours for everyone - staff, students, and the wider community.

We are dedicated to supporting our clients in building exceptional organisations where diversity is celebrated, equity is championed, and inclusion is embedded in every aspect of their culture and practices.

We approach our work with humility, commitment, and curiosity. We understand that creating meaningful change requires a deep understanding of the complex dynamics at play within organisations. Our high-touch programs, online courses, and organisational consultancy are designed to provide a comprehensive and tailored approach to DEI, addressing both individual and systemic barriers.

Our core values of wisdom, beauty, and excellence drive us. Wisdom guides our approach as we draw upon our knowledge and experience to deliver impactful solutions. Beauty inspires us to create aesthetically pleasing and engaging experiences that captivate and motivate our clients. Excellence is our commitment to providing the highest quality services, ensuring that our clients receive the support they need to navigate the challenges of building inclusive organisations.



The Safeguarding Alliance

www.thesafeguardingalliance.org.uk | rebecca@thesafeguardingalliance.org

The Safeguarding Alliance is the only MENA-based safeguarding specialist company, bringing together specialists from diverse sectors to shape global safeguarding practices.

We work in collaboration with governments, high-profile organisations, schools, and charities to promote policy, education, and training that drive safeguarding excellence. Through our international network, we ensure a unified and proactive approach to preventing safeguarding failings worldwide.

BSME Educational Consultancy Directory

Educational Consultancy



AGBIS International

www.agbis.org.uk | [LinkedIn](#)

Based on over 80 years' expertise in British independent schools, AGBIS is the 'go to' professional body for all matters concerning independent school governance. Having supported schools with many different shapes of governance, through reviews, strategic planning, training, conflict resolution and on-going support as part of a community of schools in the UK, AGBIS International now offers schools across the globe the benefit of that professional knowledge, experience and confidence. Current international members are in Europe, Africa, Middle East, Asia and South America.

Member benefits include: advice helpline for Clerks, Heads or Chairs/Governors, access to our 'Member Resources' page with important documents and helpful resources, including job descriptions, model contracts and advice to help with your role, webinars, recordings, podcasts, and resources (Many webinars are included in your membership, others for a fee), 'Coffee and Catch-up' sessions for Clerks and Chairs, in-person seminars (for a fee), conferences (for a fee) regular newsletters, an e-alert service and upcoming events. In addition, bespoke services available: reviews of governance, strategy facilitation days, bespoke on-site training, e-learning courses, regular training for new governors, sub-committee excellence training, and more.

If you have any questions, please email Alex Mitchell, Head of AGBIS International and Consultancy, at international@agbis.org.uk.



Keystone Tutors

www.keystonetutors.com | [LinkedIn](#)

Keystone Elective is a cost-effective and flexible offering to help schools cover any curriculum gaps. We offer a full range of either full or part-time support in all academic subjects as well as University preparation, SEN and EAL support. Our tutors are passionate former teachers and professionals and our delivery is fully remote and we can work for all time zones.



Evolve Education

www.evolveeducation.co.uk | john@evolveeducation.co.uk

Evolve Education delivers ENHANCE, the neurocognitive development programme that is proven to boost performance and wellbeing outcomes by improving brain health, cognitive function and mind skills.

ENHANCE combines personalised training, flexible digital learning and remote coaching that enable students to focus longer, think quicker, learn faster and feel better.