



Principal's Message

We are off to a great start to the new year! Staff and students haven't wasted a minute diving into curriculum and picking up where they left off before winter break. Your students did an amazing job on iReady diagnostic testing in December. At this point in the year, the goal is for students to make at least 50% of growth from their beginning of year diagnostic they took in August. As a school, our average mid year growth for ELA iReady was 88% and for Math iReady was 62%!! Teachers are diving into this data to ensure students are receiving the instruction they need to strive for 100% growth, or one year's growth, by the end of the year diagnostic that will be administered in May. Way to go

Panthers!

A reminder about delayed start days due to weather. When DCSD calls a delayed start, Pine Grove begins at 9:50, with doors opening at 9:40 for soft start. There is no breakfast served on delayed start days. If you haven't already, make sure you sign up for District alerts to your email and phone so you receive delayed start and snow day information as soon as it is announced.

Happy New Year!
~Mrs. Coonts



PGE Spelling Bee!

Shout out to all of the PGE students who qualified for the Spelling Bee! Congratulations to 1st place winner, Grayson, and Runner-Up, Molly! Well done everyone!



Apple Award Nominees

Congratulations to PGE's Apple Award nominees, Mrs. Bacon and Mrs. Long! We are proud to have you represent Pine Grove at the Annual Apple Award gala this spring. A well-deserved recognition for these outstanding educators!



Community Service Team

PGE's Community Service team made blankets to donate to Children's Hospital. Love the heart of our kids!

PGE Mental Health Team News

Last month, our health and wellness theme was Empathy, where students learned to recognize and understand the feelings of others through various activities and discussions, focusing on responding with kindness and support. This month, we're shifting to Adaptability, helping students explore how to stay calm and flexible when things don't go as planned, whether facing challenges, making mistakes, or encountering the unexpected. By encouraging an open mind and resilience, we aim to foster a positive attitude toward change. These skills are part of our Wayfinder program; [click here](#) to learn more about how the Wayfinder app supports our instruction.



Opportunities to build our kids' self-esteem

We praise. We point out what they did right. We tell them to keep going and believe in themselves. We build up their resilience with our WORDS and support. But what if we teach OUR children to be encouragers themselves? What if our children can practice speaking (or writing) kind words into the hearts of others and begin to encourage others to believe in themselves?

Why is this important? Because when children learn how to encourage others, they grow into positive leaders, supportive friends, and empathetic adults. And THEIR self-esteem grows too!

January Safety Spotlight

Playground and Winter Weather Safety

As the winter months bring colder temperatures, we'll be reminding students to dress warmly and play safely on the

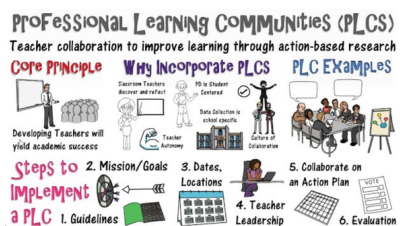
playground:

- **Warm Clothing:** Encourage your child to dress in layers, wear a hat and gloves, and bring a coat for recess.
- **Safe Play:** Talk to your children about the importance of following playground rules, especially on wet or icy surfaces. Running on slick areas can lead to falls and injuries, so caution is key.
- **Staying Dry:** Wet clothes in cold weather can lead to discomfort and even illness. If your child gets wet during outdoor play, it may be helpful to have extra items in their backpacks so they can change into dry clothes.



We hope that by focusing on these important safety topics throughout the year, we can create a strong foundation of awareness and responsibility. Thank you for your continued support and collaboration in keeping our students safe!

Sincerely,
Jen O'Leary
Assistant Principal



Did You Know?

One of the key benefits of a Professional Learning Community (PLCs) is the ability to share best practices among teachers. When educators come together to discuss what works in the classroom, they can implement these strategies across the board, leading to more consistent and effective teaching for all students.

Many thanks to PGEA for approving a grant to send 10 educators from Pine Grove to attend a PLC 3-day workshop in Denver. This learning has already made a positive impact with every team and will ultimately benefit all students!

Pine Grove Elementary

Principal: Kelly Coonts

Assistant Principal: Jen O'Leary

10450 Stonegate Pkwy, Parker, CO 80134

Phone: 303-387-8075 | **Fax:** 303-387-8076

Attendance Phone: 303-387-8077

Pine Grove Website: <https://pge.dcsdk12.org/>

Follow Us on Facebook: <https://www.facebook.com/PGE Panthers>



Kelly Coonts

Kelly is using Smore to create beautiful newsletters

1/21/25, 2:51 PM

DCSD Mail - PGE Principal Newsletter January 2025

You are receiving this email because of your relationship with Pine Grove Elementary. If you wish to stop receiving email updates sent through the Finals site service, please [unsubscribe](#).

Pine Grove Elementary | [10450 Stonegate Parkway, Parker, CO 80134](#) | 303-387-8075