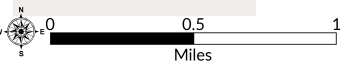
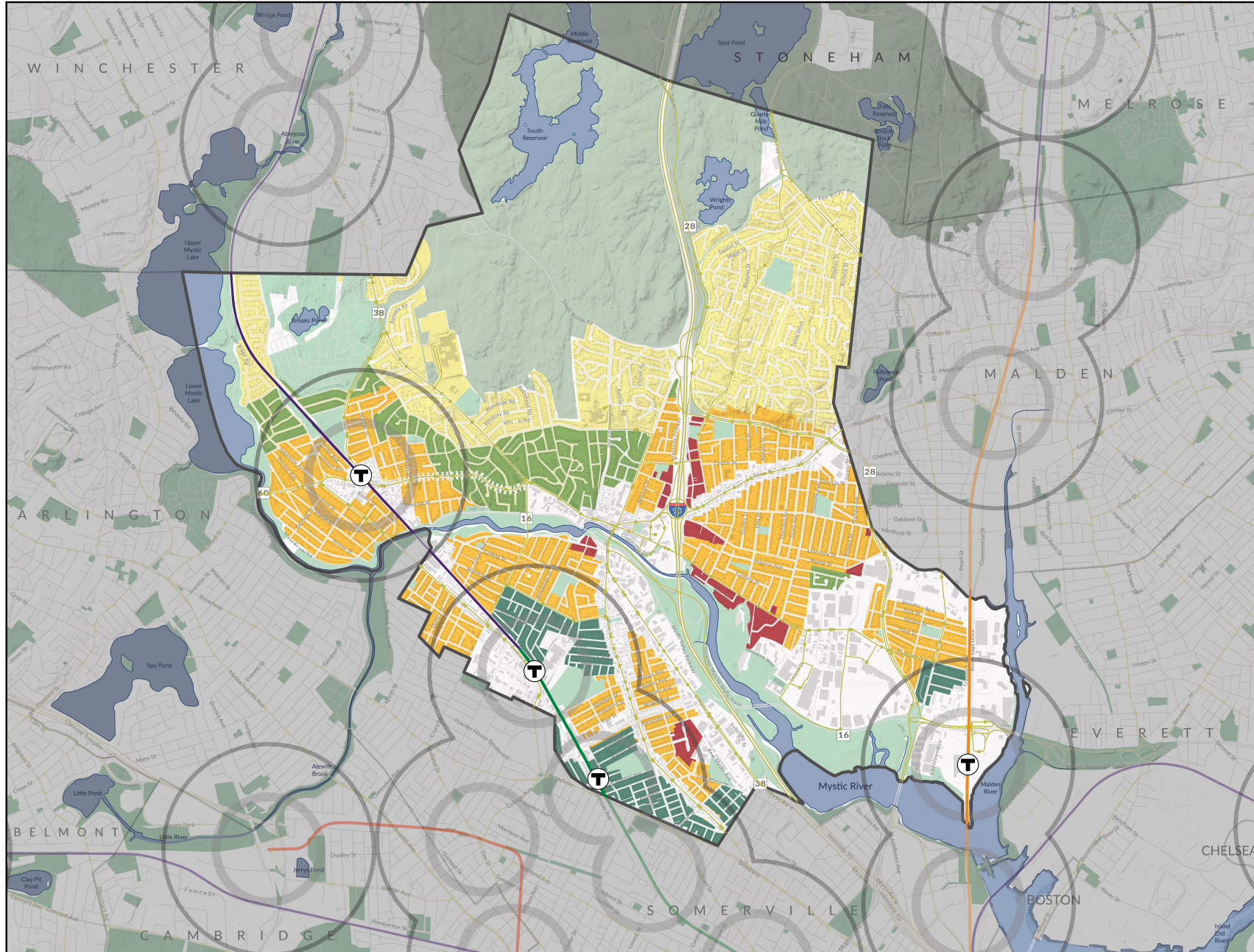


Proposed Residential Districts



LEGEND

- Neighborhood Residential 1**
 - Single-unit Dwelling
 - Historic Conversion (2 units)
 - ADU
- Neighborhood Residential 2**
 - Single-unit Dwelling
 - 2-unit Dwelling
 - Historic Conversion (2-3 units)
 - ADU
- Neighborhood Residential 3**
 - Single-unit Dwelling
 - 2-unit Dwelling
 - 3-unit Dwelling
 - Townhouse
 - Historic Conversion (2-4 units)
 - ADU
- Urban Residential 1**
 - 2-unit Dwelling
 - Historic Conversion (2-5 units)
 - Townhouse
 - 3-unit Dwelling
 - Multiplex (4-6 units)
 - ADU (1/2/3-unit Dwelling)
- Urban Residential 2**
 - Townhouse
 - 3-unit Dwelling
 - Multiplex (4-6 units)
 - Multiple unit Dwelling >6 units
3 stories max
 - ADU (1/2/3-unit Dwelling)



This map was produced in January 2025 by Innes Associates for the City of Medford using data from MassGIS, "Bureau of Geographic Information (MassGIS), Commonwealth of Massachusetts, Executive Office of Technology and Security Services".

