

National Honor Society

Cab Calloway School of
the Arts





01

What is NHS?

OVERVIEW



The National Honor Society is a group dedicated to elevating a school's student achievement and community outreach.

The average school chapter contributes

- 1,000 hours of community service
- \$26,000 in charitable donations
- 1,000 pounds of food to local, state, and national causes

To their local community.

Our Chapter is focused on direct impact rather than donation. We prefer hands on work in the community.

Pillars of National Honor Society



Character

Force within an individual that distinguishes that person from others



Service

Willingness to work without monetary compensation or recognition



Leadership

Willingness to yield to one's personal interest for the interests of others



Scholarship

A lifelong commitment to learning

COMMITTEES

Pop-Up
Opportunities

Social
Media

Peer
Tutoring

Non-NHS
Member
Volunteering

Elementary
Outreach

Seasonal
Events

OUR PROJECTS

THANKSGIVING 2021 FOOD DRIVE

The Cab NHS is hosting a food drive with the
Caesar Rodney Rotary Club!

*We need YOUR help collecting
food donations!*

OUR GOAL:

2000 Items!

Suggested food donations: boxed
stuffing, instant potatoes, canned
fruits & veggies, canned tuna,
cereal/oatmeal, juice, canned soup,
gravy, boxed rice, dry pasta &
sauce, and mac & cheese

Donations due by NOV 9TH!

NOV 15: SCHOOL-WIDE INCENTIVE DAY

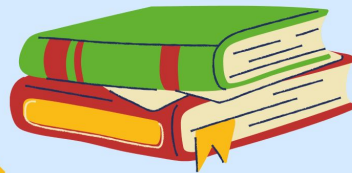
Thanksgiving
Food Drive

GOT BOOKS?

Holiday Book Drive

December 8-23

Donate books in any condition. All books are
encouraged, but books ages 0-12 will be donated
to the Philadelphia organization for low-income
children "Cradles to Crayons". Any other books will
be donated to "Brevity Bookspace".



Holiday Book
Drive

NHS RESALE SHOP



**WEEK
OF FEB
21**

The National Honor Society has
collected donations and will now
be working alongside the Fashion

Closet racks going
around the building
during activity

Resale Shop



02

Service Guidelines

SEMESTER REQUIREMENTS



Each semester (two marking periods) NHS members are required to:

- Complete 20 hours of service
- Maintain 3.5 GPA
- Attend NHS Meetings (Fridays during Lunch)

If students do not fulfill these requirements they are at risk of being put on probation.



03

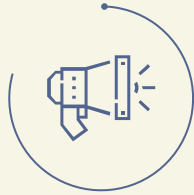
Joining NHS

WHY SHOULD I JOIN NHS



Community

NHS is a strong community through which you can work with other students with similar volunteering and academic values



Service

Accesible and enjoyable opportunities to work in your school and local communities helping those in need.



Scholarships

NHS offers scholarships to high achieving students to help cover education costs in the future.



Colleges

NHS looks great on college applications and shows a dedication to service and achievement

NHS INVITATIONS



All students to are eligible academically (minimum 3.5 unweighted GPA) will be invited to apply in the second semester.

If you are not invited to apply this year you will be considered again next year.

Candidate Evaluation



Character

Consider demonstrations of trustworthiness, respect, responsibility, fairness, caring, and citizenship



Service

Consider service experience inside and outside of school with a variety of organizations



Leadership

Consider student's leadership roles in the classroom and school/community organizations



Scholarship

Minimum of a 3.5 unweighted GPA. Consider those who desire to achieve to the best of their ability.

■ INTERESTED IN NHS?

VOLUNTEER OPPORTUNITIES SCHOLOGY GROUP

Join the Non-NHS Member Volunteering Schoology Group

Access Code: DM3D-9GCV-XC65W

Requirements to Apply to NHS

- Sophomore, Junior, or Senior
- Demonstrated volunteer experience and interest
- See Ms. Pruitt or Ms. Szczurowski for more Information

Service Requirements

- Maintain GPA
- 20 Service Hours per Semester
- Attend NHS Meetings

BUILD
YOUR
RESUME
TODAY!



Build your Volunteer Resume

We have a schoology group for non-NHS members looking to find volunteer opportunities and build up their applications before submitting.

Access Code:
DM3D-9GCV-XC65W



QUESTIONS?

NHS Selection Procedures

<https://docs.google.com/document/d/1ATXR2D2DDGe-zzDYozhfmNCgk5uW701ODRDckxQv5-k/edit>



NHS Candidate Application

<https://docs.google.com/document/d/1vW0jWkL6lO5AHH9ksyOQkU3R0i0LydIl7hxGoivtPal/edit>

