

Rising 6th Grade Parent Night

Welcome!

PTA
School Governance
Foundation



OUR COMMUNITY

- Many Ridgeview Charter students attended one of our local feeder elementary schools:
 - Heards Ferry ES
 - High Point ES
 - Spalding Drive ES
 - Lake Forest ES
 - Woodland ES
- Students also come to RCMS from private schools, other FCS schools, other counties, other states, and other countries!
- All our students will attend Riverwood International Charter High School upon finishing middle school, unless they move away from our attendance zone or decide to attend another school, such as Innovation Academy.



OUR VALUES



Mission Statement:

Ridgeview Charter Middle School prepares students to be confident, creative, compassionate global citizens through high expectations for learning, excellence in teaching, seamless curriculum, community service participation, and engagement of parents and community.

Vision:

The vision of Ridgeview Charter Middle School, in the Riverwood International Cluster, is to deliver a challenging curriculum that gives all students the tools needed to be successful contributing members of our nation and the world.

We Believe:

- Preparing students is a collective effort involving the home, the school, and the community.
- A stimulating environment is essential to learning.
- Curricular and co-curricular activities provide opportunities for academic and personal growth.
- A rigorous academic program is necessary for students to succeed in a global society.
- Students benefit from opportunities to serve the community, to enhance interpersonal skills, and to promote positive citizenship skills.

We Value:

- Respect
- Commitment to academic and behavioral excellence
- Diversity
- Safety
- Community Support

AT RCMS, WE ARE...

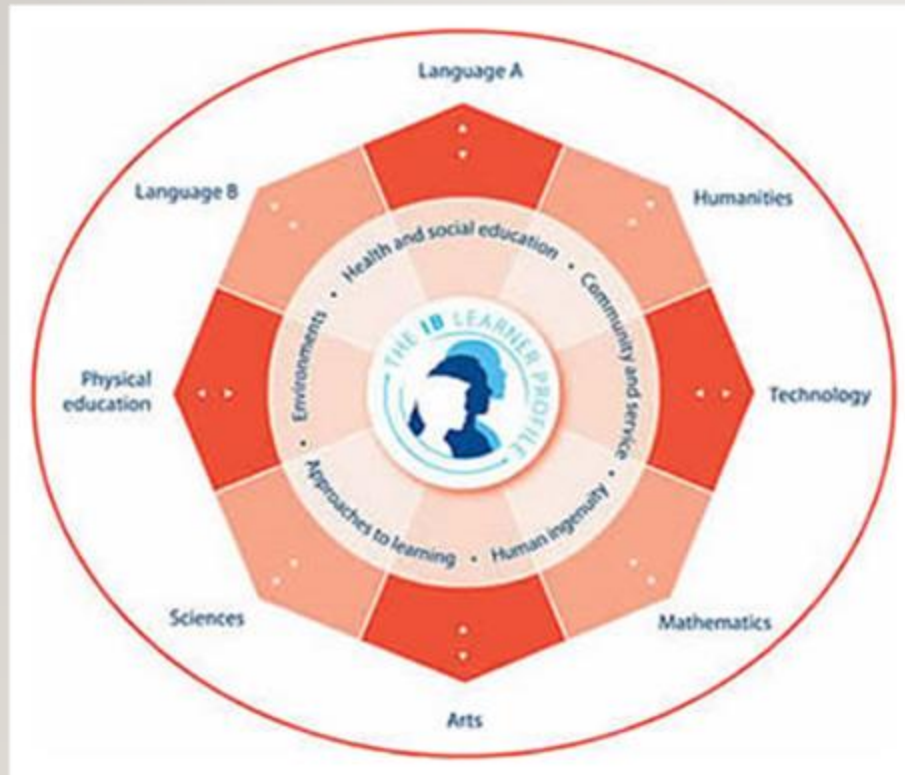
- A 2022-2025 Lighthouse School to Watch
- An International Baccalaureate World School
- An AVID Showcase School





International Baccalaureate (IB)

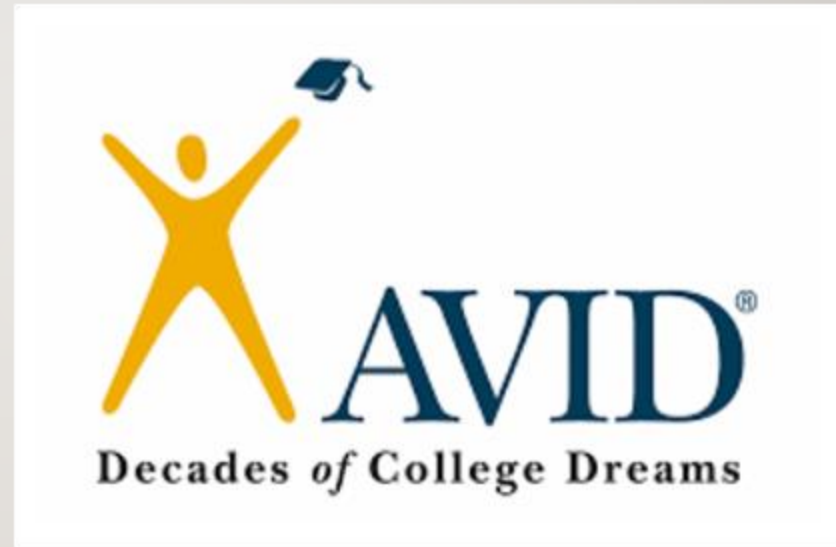
Middle Years Program (MYP)



- Standards-based projects in every class
- Application of knowledge through inquiry, research, design
- Critically explore communities and connection to school

FIVE SKILLS NECESSARY TO PREPARE STUDENTS FOR HIGH-LEVEL FUTURES

- Writing
- Inquiry
- Collaboration
- Organization
- Reading

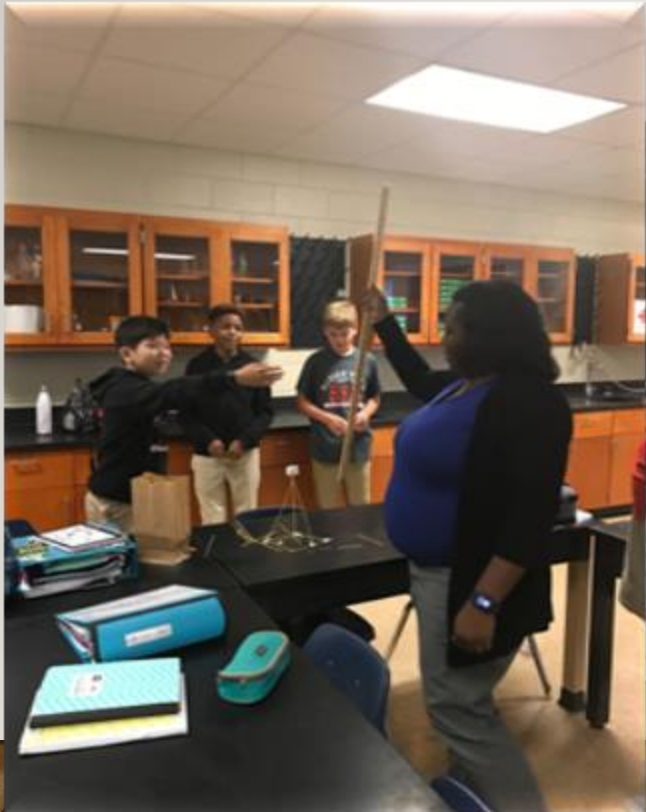


Intentional, high-engagement strategies

ADMINISTRATION:

Mr. Thomas Garrett	Principal
Mr. Patrick Wright	6 th Assistant Principal
Ms. Vicki Bulluck	7 th Assistant Principal
Mr. Kenneth Young	8 th Assistant Principal
Ms. Brooke McAfee	6 th School Counselor
Ms. Iveth Ceniceros	7 th School Counselor
Mr. Ken Stevenson	8 th School Counselor
Ms. Yamileth Aubain	Graduation Coach
Dr. Kathleen McCaffrey	Admin/MYP Coordinator

6TH GRADE LIFE AT RIDGEVIEW



ARRIVAL AND DISMISSAL:



Morning Arrival

Drop-offs 8:30am – 8:45am

Carpool is on the S.Trimble side of school



Afternoon Dismissal

4:05pm Dismissal Begins

“Look and Go” Carpool Model until 4:20pm

1st Wave Buses Depart ~4:12pm,

2nd Wave Buses Depart ~4:19pm

Bus changes through office

Carpool changes are at family discretion

DAILY PROCEDURES



When 6th grade students arrive to school, they report to the cafeteria until released to go to their 1st period class. 7th and 8th graders go to the Gym.



6th graders have very little interaction with 7th and 8th graders.



Lunch takes place during 4th period for 6th graders. Money can be placed on a student's lunch account (same from elementary) by going online.

Visit:

www.mypaymentsplus.com/.

UNIFORMS:

To Be Worn Any Day of the Week:

- Red, Black, White, or Gray school logo t-shirts or plain polo-style shirts
- Khaki Bottoms: shorts, pants, skirts



ATTENDANCE:



When students are absent, their parent/guardian should:

- Write a note stating the child's name, date of the absence(s), reason for absence, and parent's signature.
- The student should then give the note to the front office when they return to school.
- OR the parent should email the front office an electronic note/excuse for their child's absence.
- Excuses should be dropped off or emailed within 5 days of returning to school.

It is the student's responsibility to contact his/her teachers to initiate all make-up work.

STUDENT DEVICES

- Dell or Lenovo ThinkPad laptop.
- All students are issued a device, charger, and protective carrying case.
- Students are responsible for damage or loss.
- Only to be used for educational purposes
- Headphones (wired) are needed
- For problems, visit School Tech during lunch/break in Media Center.



CELLPHONES

- Personal technology devices, such as cellphones and smartwatches, must remain put away during the school day unless requested in class by a teacher.
- The school is not responsible for lost or stolen devices.
- Cell phones may only be used before and after school outside of the building.
- Cell phones are to be turned off when kept in the locker.



18f.II Prohibited Use of Personal Communication Devices (PCD) During School Day

Possession of Personal Communication Devices (PCD) (e.g., cell phones, tablets, recording devices) by a student at school during school hours is a privilege that will be forfeited if a student fails to abide by the Student Code of Conduct.

- The use of PCDs during the school day is not allowed in grades Pre-K through 5.
- In grades 6 through 12, the use of PCDs is not allowed during instructional time and will only be allowed when explicitly instructed to do so by a teacher or other school staff member

LOCKERS

- Students are assigned lockers at the beginning of the school year. Teachers will attempt to assign a locker relatively close to a student's classes.
- Rolling backpacks will not fit in lockers and are not permitted.
- 12" Locker shelves work well in lockers- anything smaller is not adequate
- Students store their backpacks in their lockers during the day. It is helpful when backpacks can fold into locker.
- Cellphones should be kept in locker, turned off.
- Please put your child's name on everything: book bags, pencil cases, jackets, PE uniforms, water bottles, lunch boxes, etc.



6TH GRADE SCHEDULE:

Welcome Students	No earlier than 8:30am
Morning Work & Announcements	8:30-8:45am
1st Period	8:55-9:45 (academic class)
2nd Period	9:48-10:38 (academic class)
3rd Period	10:41-11:08 (intervention)
Lunch & Break	Lunch- 11:08-11:33 Break- 11:33-11:43 ----- Break- 11:08-11:18 Lunch- 11:18-11:43
4th Period & Homeroom	11:43-12:33 (academic class)
5th Period	12:36-1:26 (academic class)
6th Period	1:39-2:19 (academic class)
7th Period	2:22-3:12 (connections)
8th Period	3:15-4:05 (connections)

6TH GRADE CLASSES INCLUDE:

On-level and advanced classes in all academic areas

- Five Academic Classes
 - Language Arts, Math, Social Studies, Science
 - World Language or Reading
- Two Connection Classes
- One Intervention Block
- Homework: 60-90 minutes on average

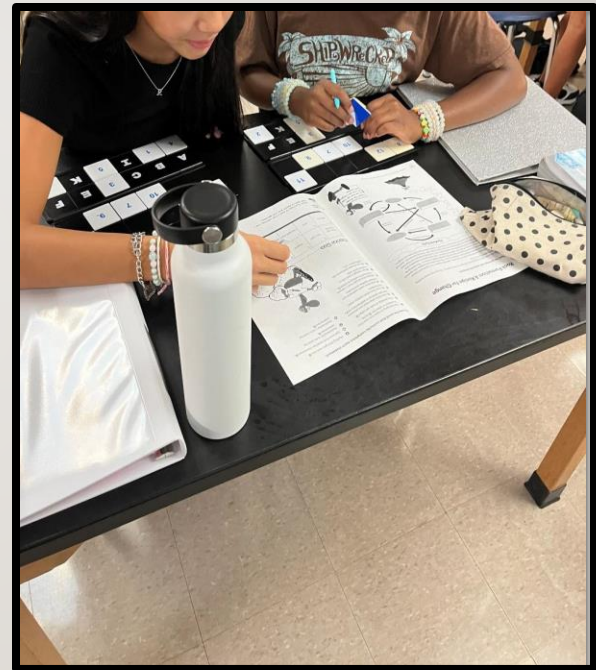


TEAMS

All 6th grade students are assigned to a team.

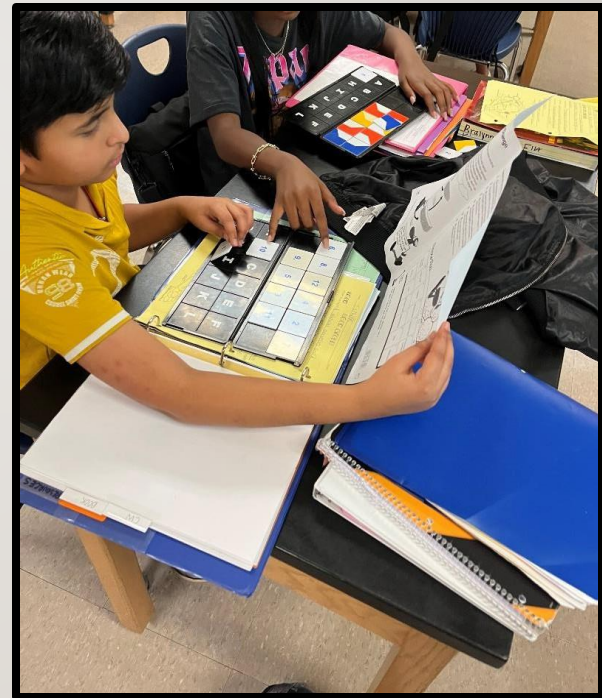
A team consists of students that share mostly the same group of teachers.

We anticipate having three teams in 6th grade for the 25-26 school year.



HOMEWORK

- Homework is given to practice and enhance the skills learned in class.
- Homework may come in many forms such as: reading, studying for a quiz or test, completing assignments, working on projects, collaborating with peers, practicing skills, as well as vocabulary building.
- Students should expect homework every night.



ORGANIZATION

- Organization is a challenge for many 6th graders. With five academic classes and connections classes, this is a big adjustment from elementary school.
- With time and patience, students create a system that works for them.
- Teachers will help students with organization as they transition to middle school.
- Set alarms and reminders if needed
- Use an agenda or planner to keep track of important dates, assignments, and tests.





COMPASS—3RD PERIOD

- Compass is a daily, schoolwide period for students to build relationships with teachers and peers, and to cultivate a sense of school pride and community.
- Essentially, it is a homeroom/advisement period.
- It is a great time to ask questions and get help too.
- The goal of Compass is to foster a sense of belonging and focus on social emotional learning & the needs of students.
- In addition, grade levels may use this time to address organizational and academic needs specific to the group.



6TH GRADE CURRICULUM

Core Course Offerings in 6th Grade:

- English Language Arts (ELA)
- Math
- Social Studies
- Science
- Reading / World Language
- Connections Courses

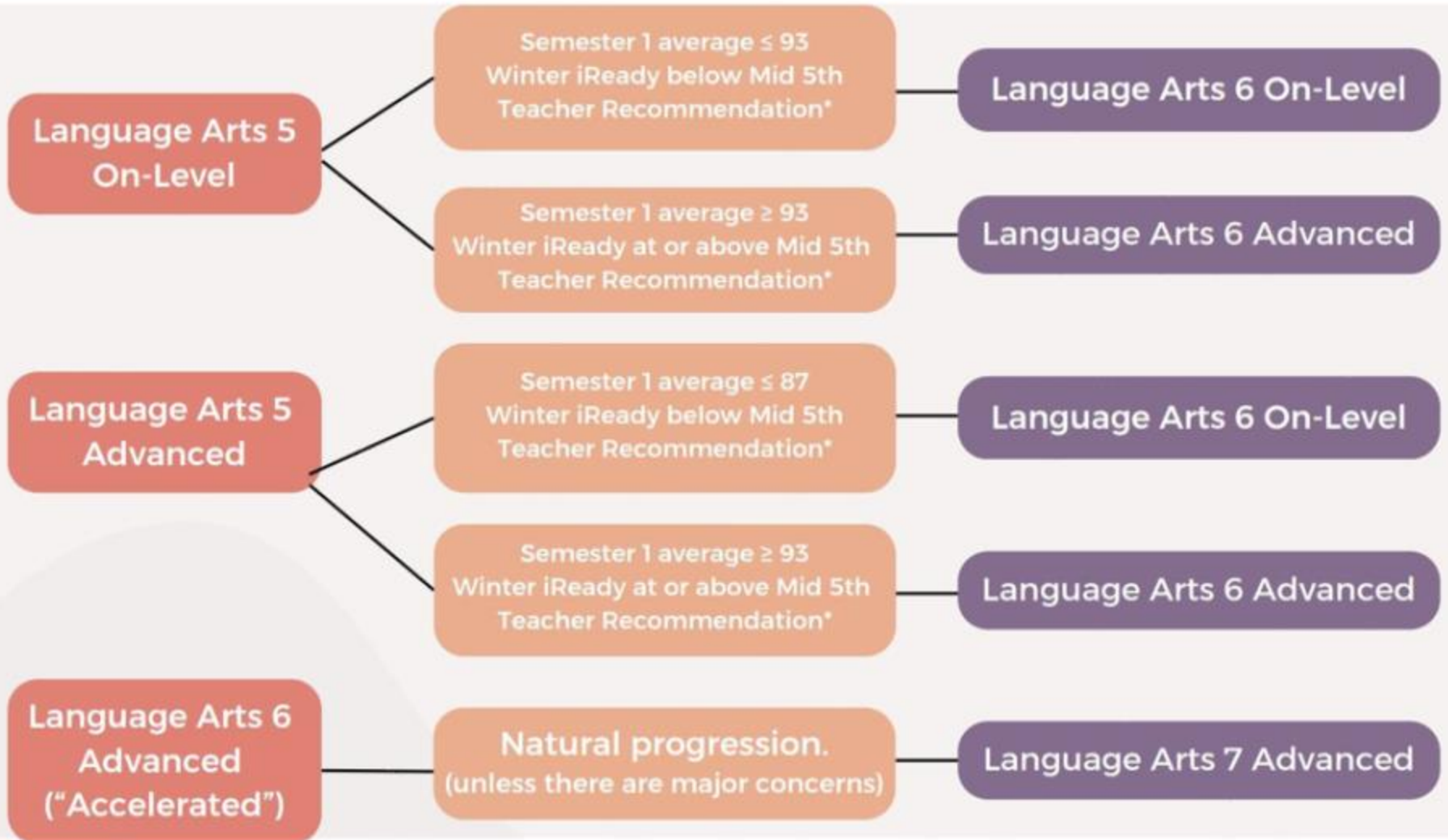
safarihub.fultonschools.org/PORTAL/

Fulton County Schools

Middle School Curriculum Handbook 2024-2025



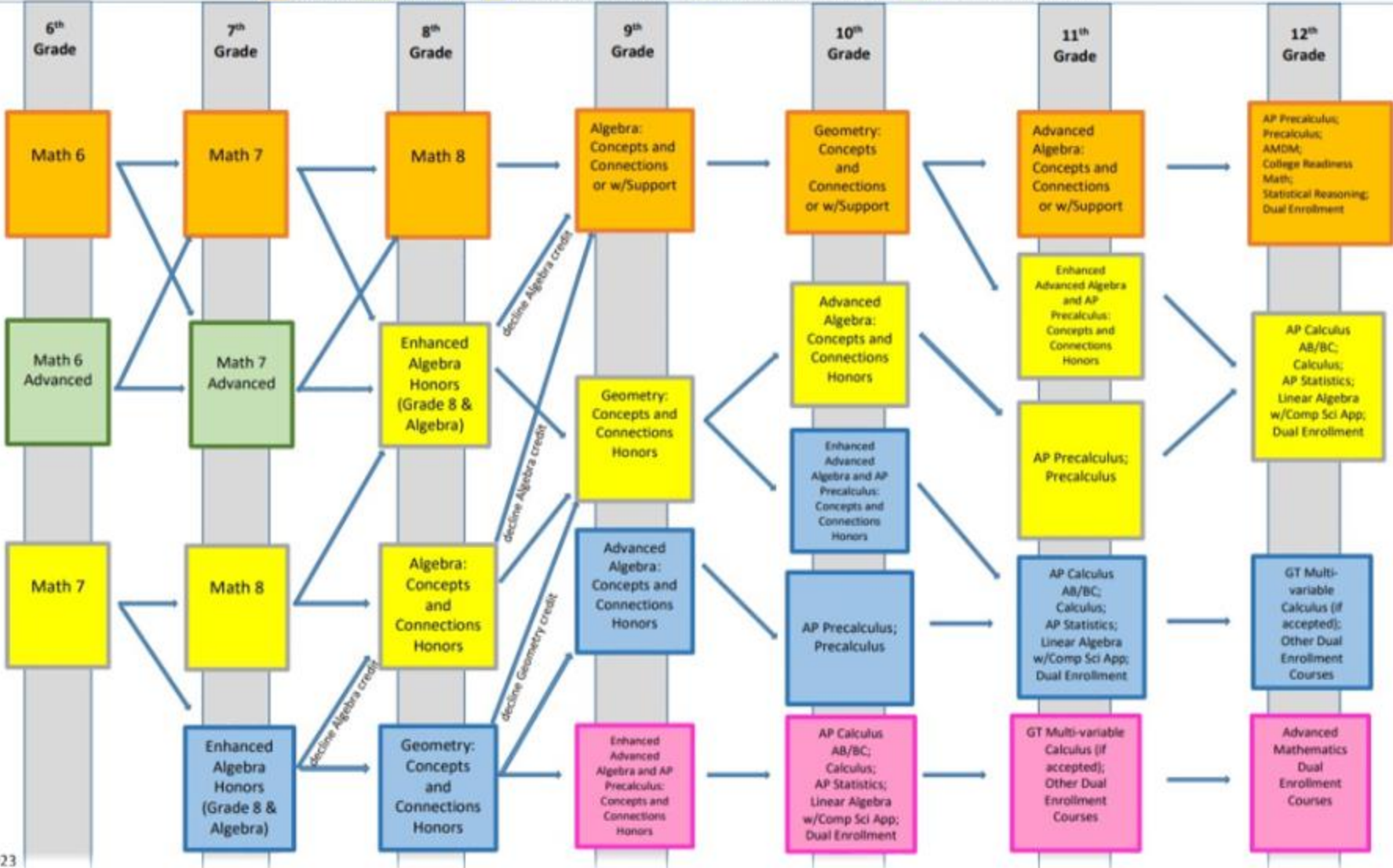
ENGLISH LANGUAGE ARTS



MATH PATHWAYS

FCS Secondary Math Pathways for Georgia's K-12 Math Standards Fall 2024 and Beyond

On-level Advanced One year accelerated Two years accelerated Three years accelerated



WORLD LANGUAGES & READING

- Students who qualify to take a World Language course can do so.
- At RCMS, we have Reading, Spanish, Japanese, and French.
- 6th grade Reading students will have the opportunity to take WL in 7th and 8th grade for High School credit assuming they meet the requirements.
- On the other hand, a child taking Reading in 6th grade who fails to meet the WL requirements when they enter 7th grade will not have the opportunity to take WL for High School credit in Middle School and they will be placed in Reading for 7th and 8th grade.



GRADING

- Grades can be viewed in Infinite Campus by students and parents. Usernames and passwords are the same from elementary school.
- Grades are cumulative for an entire semester.
- Unlike ES, grades do not start over every quarter.
- Graded papers are returned to students in class.
- They are not sent home directly to parents as in elementary school.
- RCMS follows Fulton County Schools grading policies.

**The grading scale is based on Fulton County policy.
The state of Georgia has set 70 as the minimum passing grade.**

A = 90 – 100

B = 80 – 89

C = 70 – 79

F = Below 70

INFINITE CAMPUS

Infinite Campus Parent is an internet and app-based program that allows parents to get more involved in their child's day to day education. It gives parents timely information about their child's progress in school. Using the internet, parents can access their child's grades, attendance, assignments, and discipline records.



COMMUNICATION

- Use of Infinite Classroom for students and parents
- Weekly updates from teachers via e-mail
- Parent/Teacher conferences via Homeroom Teacher or counselor
- Weekly School Newsletter (Panther Tales)

Contacts for Parents

Parents with concerns are encouraged to seek assistance from school personnel. It is requested that the following sequence be used:

- Classroom teacher
- Counselor
- Assistant Principal
- Principal

TAG CLASSES IN MIDDLE SCHOOL

Eligibility:

- The Talented and Gifted Program identifies gifted students based upon State Board of Education Rule 160-4-2-38. All students in Fulton County Schools are screened twice a year for the gifted program. If a student is referred for the gifted program, the school must gather information in the areas of multiple criteria: mental ability, achievement, creativity, and motivation. According to State Board of Education Rule 160-4-2-38, students may qualify for gifted services through option A or option B. In Option A, students must have a qualifying score in the mental ability and achievement categories. In Option B, students must have a qualifying score in three of the four categories of mental ability, achievement, creativity, and motivation. One source of information may not be used to qualify a student in more than one area.

Middle School is not a “pull out” out program like elementary school.

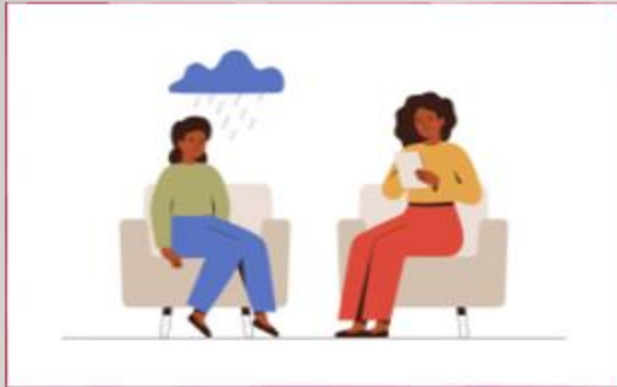
Students attend TAG classes every day.

Students could be in all advanced and TAG classes or only one or two.

Students need to maintain an 80% average to avoid probation and dismissal.



COUNSELING:



Individual and/or
group counseling

Classroom
guidance

Consultation

Coordination:

*Parent/teacher
conferences

*Study skills

*Test Talks

CONNECTIONS CLASSES:

To expose students to a variety of courses to help identify interests and refine skills in a variety of hands-on experiences.

Fine Arts



Innovation & Design



Broadcast Video



Connections World Language

(6th grade:
Spanish, French
& Japanese)

Health & Physical Education



Music (band, orchestra, chorus, general music)



WHY JOIN BAND, CHORUS, OR ORCHESTRA?

Year-long course
(one of two
connections classes
every day)

Students develop
lifelong skills (reading
music,
listening, teamwork...)

Parents get to see
those skills in
quarterly concerts!

Students connect
with others from all
teams across the
school

Check out a bit of
our work from this
year!

Email

robinsonj26@fultonschools.org

Jeremiah Robinson

if you would like to sign your student up for Chorus!

CONNECTIONS OPTIONS:

OPTION A (General Connections)

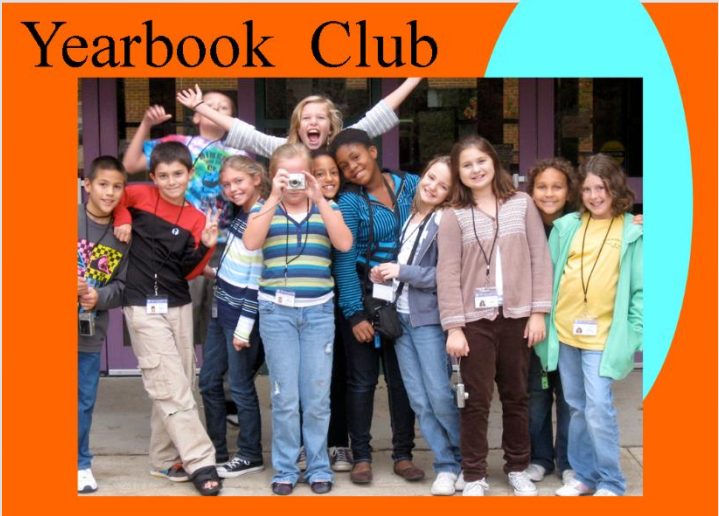
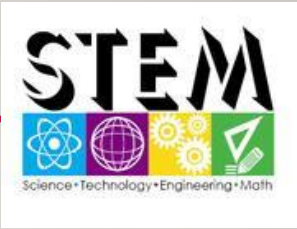
	1 st 9 wks.	2 nd 9 wks.	3 rd 9 wks.	4 th 9 wks.
7th Period	1 st Connection (i.e. General Music)	2 nd Connections (i.e. Art)	3 rd Connections (i.e. Technology)	4 th Connections (i.e. Broadcast)
8th Period	PE	PE	PE	Health

OPTION B (Music Program)

	1 st 9 wks.	2 nd 9wks	3 rd 9 wks.	4 th 9wks
7th Period	Band, Chorus or Orchestra	Band, Chorus or Orchestra	Band, Chorus or Orchestra	Band, Chorus or Orchestra
8th Period	1 st Connections (i.e. Art)	2 nd Connections (i.e. Broadcast)	PE	Health



EXTRA-CURRICULARS:



SPORTS

Fulton Sports (7 th and 8 th only)	MACC Sports (6 th -8 th Grades)
Co-ed Soccer	Soccer
Cross Country	Basketball
Tennis	Baseball
Tumbling	Softball

Fall, Winter, and Spring Events to Watch For

Panther Peek
Curriculum Night & Title I Annual Meeting
Pantherpalooza
Hands on Ridgeview
Fall Music Concerts & Sporting Events
Fall Book Fair

Winter Music Concerts & Sporting Events
Foundation Parent Party & Fundraiser

Hands on Ridgeview
Spring Musical
Spring Music Concerts & Sporting Events
IB Showcase of Student Learning
Spring Book Fair



Important Dates to Remember

Panther Peek	TBA
First Day of School	Monday, August 7 th
Curriculum Night	TBA

www.ridgeview.fultonschools.org
www.fultonschools.org

SCHOOL TRANSITION FEEDBACK

- https://bit.ly/FCSEvaluation_Survey

**OUR TEAM IS
HERE TO
HELP!**

