

ODENVILLE ELEMENTARY SCHOOL

A ST. CLAIR COUNTY SCHOOL



420 Alabama Street, Odenville, AL 35120

205-629-6406

<https://www.sccboe.org/oes>

A decorative border of various stylized flowers and greenery surrounds the central text. The flowers include pink, blue, green, and orange blossoms, some with multiple petals and others as buds. Green leaves and stems are interspersed among the flowers. The entire design is set against a light cream background with a thin blue border.

Spring

PICTURE DAY

TUESDAY
APRIL 1



field trip

1st Grade - April 9

Kindergarten - April 10

The background of the poster is a light cream color with a subtle pattern of small, golden-brown confetti or grass. Scattered around the edges are several colorful Easter eggs. The eggs feature various designs: some have horizontal stripes in shades of purple, pink, orange, and blue; others are solid colors like blue or yellow with small white dots or stars. Some eggs also have floral patterns or the word 'Easter' written on them. Small white daisies with yellow centers are also scattered throughout the background.

PRE K EASTER EGG HUNT

April 16

**SEE TEACHERS FOR MORE
INFORMATION**

@REALLYGREATSITE

2nd grade egg drop

April 17





**PRE-K
NO SCHOOL
APRIL 17**



NO SCHOOL
FRIDAY, APRIL 18
WEATHER DAY

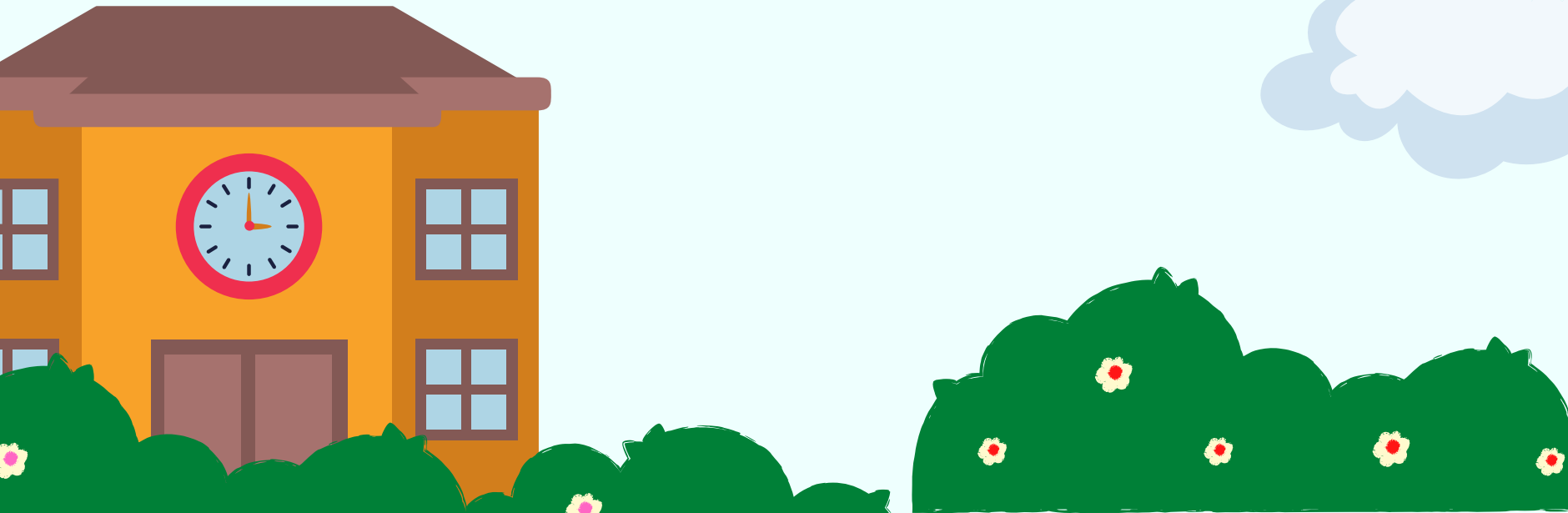


OES FIELD DAY/FUN DAY
FRIDAY, APRIL 25
CONCESSIONS WILL BE SOLD



New Car Line Procedures

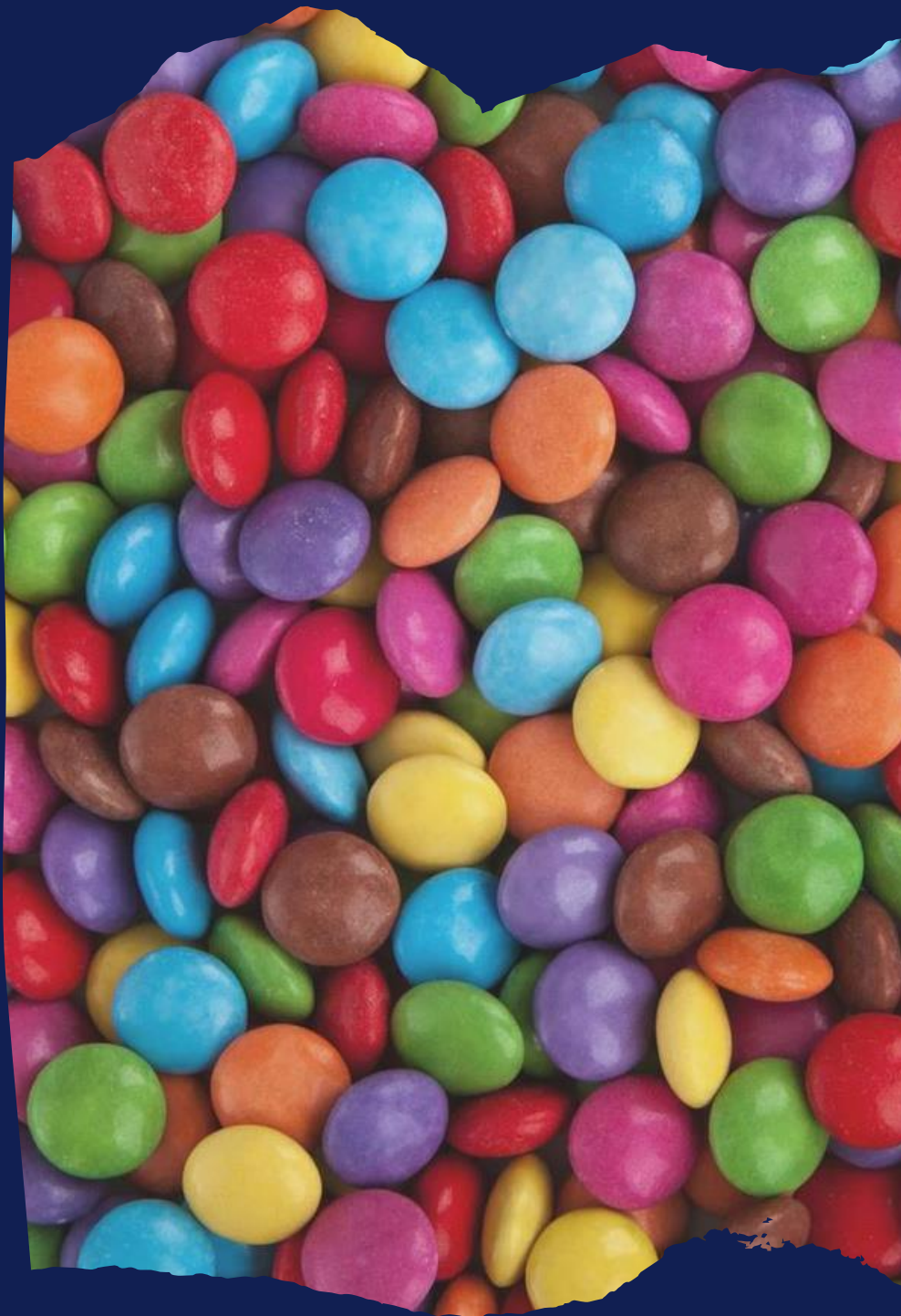
- **No afternoon Car Line before 2:00 p.m.**
- **No cell phone use while in car line.**



These new procedures will continue to make OES a safe school!

Special
Snack

Every 2nd
and 4th
Friday





ST. CLAIR COUNTY SCHOOLS

FREE MEALS!

BREAKFAST & LUNCH

FREE

**FOR ALL STUDENTS
THIS UPCOMING
SCHOOL YEAR!**

***Meal applications not required**

This institution is an equal opportunity provider



APRIL 2025

St. Clair County Schools

Breakfast and Lunch
Served at
NO COST to all students

Monday	Tuesday	Wednesday	Thursday	Friday
 Warm Muffins Yogurt Fruit Juice Milk	Frosted Cinnamon Roll Fruit Juice Milk	Breakfast Pizza Fruit Juice Milk	Sausage Patty Toast and Grits Fruit Juice Milk	Chicken Minis Fruit Juice Milk
Waffle Sticks w/ Syrup Fruit Juice Milk	Dutch Waffles Fruit Juice Milk	Ham & Cheese Croissant Fruit Juice Milk	Glazed Donut w/ Yogurt Fruit Juice Milk	Sausage Biscuit Fruit Juice Milk
French Toast Sticks w/ Syrup Fruit Juice Milk	Scrambled Eggs w/ Cheese Toast Fruit Juice Milk	Sausage Biscuit Fruit Juice Milk	Fruit & Yogurt Parfait Or Pop Tart w/ String cheese Fruit Juice Milk	Weather Day
Mini Pancakes Fruit Juice Milk	Blue Berry Biscuit Sausage Fruit Juice Milk	Breakfast Taco Fruit Juice Milk	Frosted Cinnamon Roll Fruit Juice Milk	Chicken Minis Fruit Juice Milk
	Sausage and Cheese Pizza Bagel Fruit Juice Milk	Bacon Biscuit Fruit Juice Milk		

LINQ Connect

This menu is Subject to change.
This institution is an equal opportunity provider.

Upload money to your child's
account online at linqconnect.com

Cereal available daily. Other breakfast option such as
PBJ, Yogurt Parfaits, & Cheese Toast may also be
available throughout the month.

Monday	Tuesday	Wednesday	Thursday	Friday
 Hot Dog Fries Baked Beans Fruit Milk	Chicken Fajita Taco Refried Beans Spanish Rice Lettuce/Tomato/Sour Cream Salsa Fruit Milk	Buffalo Chicken Dip Pinto Bean Celery sticks w/ranch Fruit Milk	Chicken Bites Mash Potatoes Green Beans Rolls Fruit Milk	Stuffed Crust Pizza Cheese or Pepperoni Golden Corn Garden Salad Homemade Ranch Fruit Milk
Italian Dunkers w/ Marinara Steamed Broccoli Side Salad Homemade Ranch Fruit Milk	Crispito Spanish Rice Pinto Beans Sour Cream/ Salsa Lettuce/ Tomato Fruit Milk	Hot Ham & Cheese Sandwich Tomato Basil Soup Roasted Potatoes Fruit Milk	Chicken Alfredo Steamed Broccoli Tuscan Salad Fruit Milk	Homemade Pizza Golden Corn Garden Salad Homemade Ranch Fruit Milk
Cheeseburger/ Hamburger Fries Baked Beans Lettuce/Tomato/Pickle Fruit Milk	Beef Nachos Chili Beans Sour Cream/Salsa Lettuce/ Tomato Fruit Milk	Sliced Turkey w/ Gravy Mashed Potatoes Green Beans Cake Fruit Milk	Stuffed Crust Pizza Cheese or Pepperoni Golden Corn Garden Salad Homemade Ranch Fruit Milk	Weather Day
Chicken Sandwich Steamed Broccoli Waffle Fries Lettuce/Tomato/Pickle Fruit Milk	Chicken Fajita Nacho Lime Rice Pinto Beans Sour Cream/ Salsa Lettuce/Tomato Fruit Milk	Breakfast Scrambled Eggs Sausage Biscuit and Gravy Fruit Milk	Chicken Parmesan Roll Tuscan Salad S'more's Pudding Cup Fruit Milk	Homemade Pizza Golden Corn Garden Salad Fruit Milk
Baked Spaghetti Garlic Bread Steamed Broccoli Tuscan Salad Fruit Milk	BBQ Nachos Chili Beans Salsa/ Sour Cream Lettuce/Tomato Fruit Milk	Baked Spaghetti Garlic Bread Steamed Broccoli Tuscan Salad Fruit Milk	Baked Spaghetti Garlic Bread Steamed Broccoli Tuscan Salad Fruit Milk	Baked Spaghetti Garlic Bread Steamed Broccoli Tuscan Salad Fruit Milk

is Subject to Change**

institution is an equal opportunity provider

Upload Money to your child's account for

"extra" items such as ice cream, drinks, extra portions, and snacks

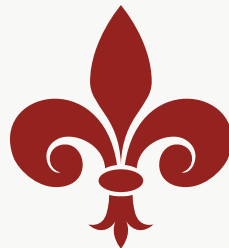
Other entrée items may be available

including PBJ & Deli Sandwich

MONEY

Please send all money in an enclosed envelope with student name, teacher name, and a description.

All checks must include a telephone number and the student name.



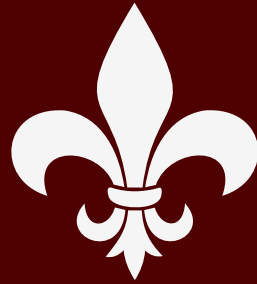
OES SCHOOL HOURS

SCHOOL HOURS:

- 7:20 - Doors open for CAR RIDERS
- 7:25- BUS RIDERS ARE RELEASED FROM BUSES
- 7:45 - SCHOOL DAY BEGINS
- 2:45 - DISMISSAL BEGINS
- IF YOU ARRIVE AFTER 7:45, YOU WILL NEED TO COME INTO THE OFFICE AND CHECK-IN YOUR CHILD.



OES CHECK OUT



For your child's
safety we request
all checkouts be
made prior to
2:15 p.m.



Help Your Child Succeed in School: Build the Habit of Good Attendance Early

DID YOU KNOW?

- Starting in preschool and kindergarten, too many absences can cause children to fall behind in school.
- Missing 10%, or about 2 days each month over the course of a school year, can make it harder to learn to read.
- Students can still fall behind if they miss just one or two days every few weeks.
- Being late to school may lead to poor attendance.
- Absences and tardiness can affect the whole classroom if the teacher has to slow down learning to help children catch up.

Attending school regularly helps children feel better about school—and themselves. Start building this habit in preschool so they learn right away that going to school on time, every day is important. Eventually good attendance will be a skill that will help them succeed in high school and college.

WHAT YOU CAN DO

- Set a regular bedtime and morning routine.
- Lay out clothes and pack backpacks the night before.
- Keep your child healthy and make sure your child has the required shots.
- Introduce your children to their teachers and classmates before school starts.
- Develop backup plans for getting to school if something comes up. Call on a family member, a neighbor, or another parent.
- Try to schedule non-urgent related medical appointments and extended trips when school isn't in session.
- If your child seems anxious about going to school, talk to teachers, school counselors and other parents for advice on how to make your child feel comfortable and excited about learning.
- If you are concerned that your child may have a contagious illness, call your school or health care provider for advice.
- If your child must stay home due to illness, ask the teacher for resources and ideas to continue learning at home.

When Do Absences Become a Problem?



Note: These numbers assume a 180-day school year.

Visit Attendance Works at www.attendanceworks.org for free downloadable resources and tools!

Attendance Matters!

We need your help to improve student attendance this school year!

- 1.) If at all possible, please make sure your student is present at school each day.
- 2.) If your student is absent, please send an excuse as soon as possible.

Please note that 18 or more absences (whether or excused or unexcused) deems a student chronically absent & lowers our state report card score. Additionally, students can not learn if they are not present.



Bus Information Form



New to St. Clair County and need bus information?
Recently moved or just not sure what bus to ride?
Never ridden the bus before?

Please complete the online bus information form. Bus information will be reviewed and emailed to you.

[HTTPS://FORMS.OFFICE.COM/PAGES/RESPONSEPAGE.ASPX?ID=JWORKPNOU0KYLZJDGMRWNUYES4IHPX5GIMCMCXGKCFHWTVTRFCWQ1QYMLDEVS4U](https://forms.office.com/Pages/ResponsePage.aspx?id=JWORKPNOU0KYLZJDGMRWNUYES4IHPX5GIMCMCXGKCFHWTVTRFCWQ1QYMLDEVS4U)

St. Clair County School Calendar 2025- 2026

ST. CLAIR COUNTY SCHOOLS

2025-2026 SCHOOL CALENDAR

(Approved 1/21/25)

S	M	T	W	T	F	S
		1	2	3	4	5
6	7	8	9	10	11	12
13	14	15	16	17	18	19
20	21	22	23	24	25	26
27	28	29	30	31		

S	M	T	W	T	F	S
				1	2	3
4	5	6	7	8	9	10
11	12	13	14	15	16	17
18	19	20	21	22	23	24
25	26	27	28	29	30	31

S	M	T	W	T	F	S
					1	2
3	4	5	6	7	8	9
10	11	12	13	14	15	16
17	18	19	20	21	22	23
24	25	26	27	28	29	30
31						

S	M	T	W	T	F	S
	1	2	3	4	5	6
7	8	9	10	11	12	13
14	15	16	17	18	19	20
21	22	23	24	25	26	27
28						

S	M	T	W	T	F	S
	1	2	3	4	5	6
7	8	9	10	11	12	13
14	15	16	17	18	19	20
21	22	23	24	25	26	27
28	29	30				

S	M	T	W	T	F	S
	1	2	3	4	5	6
7	8	9	10	11	12	13
14	15	16	17	18	19	20
21	22	23	24	25	26	27
28	29	30	31			

S	M	T	W	T	F	S
			1	2	3	4
5	6	7	8	9	10	11
12	13	14	15	16	17	18
19	20	21	22	23	24	25
26	27	28	29	30	31	

S	M	T	W	T	F	S
			1	2	3	4
5	6	7	8	9	10	11
12	13	14	15	16	17	18
19	20	21	22	23	24	25
26	27	28	29	30		

S	M	T	W	T	F	S
						1
2	3	4	5	6	7	8
9	10	11	12	13	14	15
16	17	18	19	20	21	22
23	24	25	26	27	28	29
30						

S	M	T	W	T	F	S
					1	2
3	4	5	6	7	8	9
10	11	12	13	14	15	16
17	18	19	20	21	22	23
24	25	26	27	28	29	30
31						

S	M	T	W	T	F	S
	1	2	3	4	5	6
7	8	9	10	11	12	13
14	15	16	17	18	19	20
21	22	23	24	25	26	27
28	29	30	31			

S	M	T	W	T	F	S
	1	2	3	4	5	6
7	8	9	10	11	12	13
14	15	16	17	18	19	20
21	22	23	24	25	26	27
28	29	30				

LEGEND	
	Student Attendance Day
	Holiday - School/Offices Closed
	9 Month Employee Work Day
	Employee SWAP Day

2025	
AUG 7	First Day Students last name A-K
AUG 8	First Day Students last name L-Z
SEP 1	Labor Day - School Closed
OCT 13-15	Fall Break - School Closed
NOV 10-11	Veteran's Day Observed - School Closed
NOV 24-28	Thanksgiving - School Closed
Dec 15-19	Semester Exams
DEC 19	End 1st Semester
DEC 23-JAN 5	Christmas Break - School Closed

2026	
JAN 6	First Day of Second Semester
JAN 19	MLK Holiday - School Closed
FEB 16	President's Day - School Closed
MAR 23-27	Spring Break - School Closed
May 18-21	Semester Exams
MAY 21	Last Day of School

Grade Reporting Periods			
9 Week Grading	Total	Progress Reports	Report Cards
Aug 7-Oct 7	43	Sept 9	OCT 16
Oct 8-Dec 19	43	Nov 13	Jan 8
Jan 6-Mar 11	45	Feb 10	Mar 17
March 12-May 21	46	Apr 21	May 21

STUDENT DAYS		9-MONTH EMPLOYEE DAYS	
177		110	

Employee Work Days	
August 1	Employee Work Day/PD
August 4	Employee Work Day/PD
August 5	Employee Work Day/PD
August 6	Employee Work Day/PD
October 14	SWAP DAY
October 15	Employee Work Day/PD
November 10	SWAP DAY
January 5	Employee Work Day/PD
February 16	Employee Work Day/PD
May 22	Employee Work Day/PD

STATE REPORTS	DUE DATES
20 Day Report	Sep 4
30 Day After Labor Day	Sep 29
40 Day Report	Oct 2
60 Day Report	Nov 4
80 Day Report	Dec 11
100 Day Report	Jan 26
120 Day Report	Feb 24
140 Day Report	Mar 31
160 Day Report	Apr 28
177 Day Report	May 21

St. Clair County Important Dates 2025-2026



2025	
AUG 7	First Day Students last name A-K
AUG 8	First Day Students last name L-Z
SEP 1	Labor Day - School Closed
OCT 13-15	Fall Break - School Closed
NOV 10-11	Veteran's Day Observed - School Closed
NOV 24-28	Thanksgiving - School Closed
Dec 15-19	Semester Exams
DEC 19	End 1st Semester
DEC 22-JAN 5	Christmas Break - School Closed

2026	
JAN 6	First Day of Second Semester
JAN 19	MLK Holiday - School Closed
FEB 16	President's Day - School Closed
MAR 23-27	Spring Break - School Closed
May 18-21	Semester Exams
MAY 21	Last Day of School

9 Week Grading	Grade Reporting Periods		
	Total	Progress Reports	Report Cards
Aug 7-Oct 7	43	Sept 9	Oct 16
Oct 8-Dec 19	43	Nov 13	Jan 8
Jan 6-Mar11	45	Feb 10	Mar 17
Mar12-May 21	46	Apr 21	May 21

STUDENT DAYS	9-MONTH EMPLOYEE DAYS
177	187

St. Clair County School Calendar 2024- 2025

ST. CLAIR COUNTY SCHOOLS

2024-2025 SCHOOL CALENDAR DRAFT

AUGUST 2024						
S	M	T	W	T	F	S
				1	2	3
4	5	6	7	8	9	10
11	12	13	14	15	16	17
18	19	20	21	22	23	24
25	26	27	28	29	30	31

JANUARY 2025						
S	M	T	W	T	F	S
			1	2	3	4
5	6	7	8	9	10	11
12	13	14	15	16	17	18
19	20	21	22	23	24	25
26	27	28	29	30	31	

SEPTEMBER 2024						
S	M	T	W	T	F	S
1	2	3	4	5	6	7
8	9	10	11	12	13	14
15	16	17	18	19	20	21
22	23	24	25	26	27	28
29	30					

FEBRUARY 2025						
S	M	T	W	T	F	S
						1
2	3	4	5	6	7	8
9	10	11	12	13	14	15
16	17	18	19	20	21	22
23	24	25	26	27	28	

OCTOBER 2024						
S	M	T	W	T	F	S
		1	2	3	4	5
6	7	8	9	10	11	12
13	14	15	16	17	18	19
20	21	22	23	24	25	26
27	28	29	30	31		

MARCH 2025						
S	M	T	W	T	F	S
						1
2	3	4	5	6	7	8
9	10	11	12	13	14	15
16	17	18	19	20	21	22
23	24	25	26	27	28	29
30	31					

NOVEMBER 2024						
S	M	T	W	T	F	S
					1	2
3	4	5	6	7	8	9
10	11	12	13	14	15	16
17	18	19	20	21	22	23
24	25	26	27	28	29	30

APRIL 2025						
S	M	T	W	T	F	S
		1	2	3	4	5
6	7	8	9	10	11	12
13	14	15	16	17	18	19
20	21	22	23	24	25	26
27	28	29	30			

DECEMBER 2024						
S	M	T	W	T	F	S
1	2	3	4	5	6	7
8	9	10	11	12	13	14
15	16	17	18	19	20	21
22	23	24	25	26	27	28
29	30	31				

MAY 2025						
S	M	T	W	T	F	S
				1	2	3
4	5	6	7	8	9	10
11	12	13	14	15	16	17
18	19	20	21	22	23	24
25	26	27	28	29	30	31

LEGEND	
	Student Attendance Day
	Holiday - School Closed
	9 Month Employee Extra Work Day

2024	
AUG 8	First Day Students last name A-K
AUG 9	First Day Students last name L-Z
SEP 2	Labor Day - School Closed
OCT 14	Fall Break - School Closed
NOV 11	Veteran's Day Observed - School Closed
Nov 25	Employee Swap Day 1
NOV 25-29	Thanksgiving - School Closed
DEC 16-20	Semester Exams
DEC 20	End 1st Semester
DEC 23 to JAN 3	Christmas Break - School Closed for Students

2025	
JAN 6	Employee Swap Day 2
JAN 7	First Day of Second Semester
JAN 20	MLK Holiday - School Closed
FEB 17	President's Day - School Closed
MAR 24-28	Spring Break - School Closed
APR 18	Weather Day
MAY 19-23	Semester Exams
MAY 23	Last Day of School

Grade Reporting Periods			
9 Week Grading Periods	Total Days	Progress Reports Available	Report Cards Go Home
Aug 8-Oct 10	45	Sept 10	Oct 17
Oct 15-Dec 20	44	Nov 14	Jan 9
Jan 7- Mar 12	45	Feb 6	Mar 18
Mar 13-May 23	46	Apr 22	May 23

STUDENT DAYS	9-MONTH EMPLOYEE DAYS
180	187

STATE REPORTS	DUE DATES
20 Day Report	Sep 5
20 Day After Labor Day	Sep 30
40 Day Report	Oct 3
60 Day Report	Nov 1
80 Day Report	Dec 9
100 Day Report	Jan 22
120 Day Report	Feb 20
140 Day Report	Mar 20
160 Day Report	Apr 25
180 Day Report	May 23

St. Clair County Important Dates 2024-2025



2024	
AUG 8	First Day Students last name A-K
AUG 9	First Day Students last name L-Z
SEP 2	Labor Day - School Closed
OCT 14	Fall Break - School Closed
NOV 11	Veteran's Day Observed - School Closed
Nov 25	Employee Swap Day 1
NOV 25-29	Thanksgiving - School Closed
DEC 16-20	Semester Exams
DEC 20	End 1st Semester
DEC 23 to JAN 3	Christmas Break - School Closed for Students

2025	
JAN 6	Employee Swap Day 2
JAN 7	First Day of Second Semester
JAN 20	MLK Holiday - School Closed
FEB 17	President's Day - School Closed
MAR 24-28	Spring Break - School Closed
APR 18	Weather Day
MAY 19-23	Semester Exams
MAY 23	Last Day of School

Grade Reporting Periods			
9 Week Grading Periods	Total Days	Progress Reports Available	Report Cards Go Home
Aug 8-Oct 10	45	Sept 10	Oct 17
Oct 15-Dec 20	44	Nov 14	Jan 9
Jan 7- Mar 12	45	Feb 6	Mar 18
Mar 13-May 23	46	Apr 22	May 23

Alabama Literacy Act

Click here to learn more:

<https://www.youtube.com/watch?app=desktop&v=EQ21UFG0Vds&pp=ygUQQVJJIEhJVEVSQUNZIEFDVA%3D>



Frequently Asked Questions FOR K-3 FAMILIES

What is the ALABAMA LITERACY ACT?

The **Alabama Literacy Act** was passed in 2019 to help improve reading in Alabama public schools to ensure students are reading on grade level by the end of the 3rd grade. Reading is the gateway to lifelong achievement and the students of Alabama deserve a strong start on their path to success.

Why focus on literacy?

By 3rd grade, students must be proficient in foundational reading skills in order to comprehend texts. If they are unsuccessful, they will have difficulty understanding grade level reading material. Students also need strong reading skills in order to learn other school subjects such as science, social studies, writing, and even math.

How will families be informed about their child's progress?

Each student in kindergarten through 3rd grade will have his/her reading assessed at the beginning, middle, and end of the school year. These assessments will identify students who need intensive reading instruction and intervention. These assessments also provide useful information for the teacher to help tailor instruction to meet individual student needs. Families should receive these results in writing within a designated time frame.

What is The Alabama State Board of Education approved assessment that is required for promotion to the 4th grade?

The Board approved assessment is the reading portion of the 3rd grade Alabama Comprehensive Assessment Program (ACAP) English Language Arts assessment. The ACAP summative is a required test for all third-grade students to initiate a path to promotion. Students not demonstrating sufficient reading skills may be retained at the end of 3rd grade, if unable to show sufficient reading skills by one of the other paths to promotion. Your child's school will provide interventions to help your child.

How will schools help students who are retained in 3rd grade because the student does not meet the promotion requirement?

Students retained in 3rd grade will receive more intensive reading intervention services including:

- Offer summer reading camps and Alabama Summer Achievement Program (ASAP) shall be made available to all K-3 students in public elementary schools that are among the lowest performing 5% in reading;
- Offer before or after school intervention tutoring throughout the year to support learning;
- Provide reading instruction that is grounded in the science of reading;

If your child is reading below grade level or is struggling with reading, his/her teacher will inform you of the reading deficits that have been identified.

The teacher will provide your child with additional reading instruction and support, and you will be given strategies to help your child at home.

If your child does not demonstrate sufficient reading skills at the end of 3rd grade, you will receive notification that he/she may not be promoted to 4th grade.



Good Cause Exemptions:

Good cause exemptions allow students who are reading below grade level to be promoted to the fourth grade but still receive interventions and other supports. The good cause exemptions include:

- (1) Students identified as English language learners who have had less than three years of instruction in English as a second language.
- (2) Students with disabilities who participate in the statewide English Language Arts reading assessment and who have an Individual Education Plan or a Section 504 plan that reflects that the student has received intensive reading intervention for more than two years and who still demonstrates a deficiency in reading or was previously retained in kindergarten, first grade, second grade, or third grade.
- (3) Students who have received intensive reading intervention for two or more years and who still demonstrate a deficiency in reading and who were previously retained in kindergarten, first grade, or second grade for a total of two years.

*No student shall be retained more than once in the third grade.

NOTE: Students with disabilities whose Individualized Education Plan indicates that participation in the statewide assessment program is not appropriate, consistent with state law, are automatically exempt from demonstrating sufficient reading skills outlined in this chapter in order to achieve promotion.

*If a student does not demonstrate sufficient reading skills through one of the three pathways or does not qualify for a good cause exemption, the student may not be promoted to fourth grade.

How can families and guardians help?



BECOME A VOLUNTEER!

VOLUNTEER'S MUST HAVE A COMPLETED BACKGROUND CHECK

HOW TO BECOME AN APPROVED VOLUNTEER:

STEP 1 - COMPLETE THE ONLINE BACKGROUND CHECK.

STEP 2 - COMPLETE AND SUBMIT TO OES THE VOLUNTEER APPLICATION FORM WITH YOUR DRIVER'S LICENSE ATTACHED.

STEP 3 - ADMINISTRATION WILL SUBMIT YOUR NAME TO THE BOARD OF EDUCATION, AND THEY WILL GIVE PERMISSION TO PROCESS YOUR BACKGROUND CHECK.

STEP 4 - YOU WILL RECEIVE NOTIFICATION THAT YOU'VE BEEN APPROVED. WE WILL NOTIFY YOU IF THERE IS AN ISSUE WITH YOUR BACKGROUND CHECK- EX: INCORRECT SS#, NAME ON DL DOESN'T MATCH NAME SUBMITTED, ETC.

[HTTPS://SECUREVOLUNTEER.COM/ST-
CLAIR-COUNTY-SCHOOLS/HOME](https://securevolunteer.com/st-clair-county-schools/home)



Stay informed with the SCC App!

DOWNLOAD THE APP TO GET NEWS FOR
YOUR SCHOOLS!



<https://www.sccboe.org/domain/2011>