



CHRIST THE KING CATHOLIC HIGH SCHOOL



STATE OF THE SCHOOL

Together we Leave our Mark

*Strategic Plan and
Mid-Year Report*

2024 - 2025 SCHOOL YEAR

GITA+SE

Table of Contents

Letter from the President	3
Strategic Plan	4-7
Demographic Data	8
Facilities - Timeline	9-10
Facilities - Expansion	11-12
Capital Campaign	13-14
Academic Excellence	15
Financial Vitality	16
Auxiliaries & Extraordinary Programs - 2024-2025 Budgets	17
Sponsors & Donors	18-21
Commitments	22
2023-2024 Financial Results & Impact	23-30





STATE OF THE SCHOOL REPORT

Together we Leave our Mark

Dear Christ the King Families, Faculty, and Supporters,

*As we reflect on another year of growth and achievement at Christ the King Catholic High School, I am filled with **gratitude** for the unwavering **dedication** of our students, faculty, parents, and benefactors. Together, we continue to strengthen our mission to **Believe Sincerely, Think Critically, Serve Others, and Act Responsibly in the Name of Christ the King.***

***The State of the School Report** enclosed provides a comprehensive look at our **progress, challenges, and aspirations.** We are blessed to be a school on the rise—our **enrollment** continues to grow, our **academic programs** are expanding, and our **campus** is evolving to meet the needs of our students. Most importantly, our **commitment to Catholic identity** and **faith formation** remains at the **heart** of all we do.*

*Last year, we launched a new **Strategic Plan**, setting forth bold priorities in **faith, academics, athletics, and facilities.** We have celebrated numerous **student accomplishments**, from record-breaking college acceptances and service academy appointments to state playoff victories and championship seasons. Our faculty continues to **innovate** in the classroom, providing an **exceptional education** that prepares students for success in college and beyond.*

*Looking ahead, we are focused on our school's continued **growth** and **sustainability.** The expansion of our academic facilities and the capital campaign for our athletic fields are critical steps in providing the best possible experience for our students. These projects require the **collective support** of our entire community, and I invite you to join us in this effort to ensure a **bright future** for Christ the King.*

*Thank you for your **commitment** to our school and for the many ways you contribute to its success. Whether through your prayers, your generosity, or your involvement, you play an **essential role** in shaping the future of Christ the King Catholic High School.*

I look forward to continuing this journey with you and am excited about what lies ahead. May God bless you and your families abundantly.

Dr. Carl Semmler
President
Christ the King Catholic High School

Strategic Plan

Roadmap to Successful Vision

This strategic plan is a vital roadmap for Christ the King Catholic High School, guiding its vision, priorities, and decisions. It ensures that resources are allocated effectively to advance the mission, meet the needs of students, and adapt to the ever-evolving educational landscape. Developed collaboratively, the process involved input from stakeholders, including faculty, staff, parents, students, and community members, with a shared commitment to the school's goals. By analyzing current strengths, challenges, and opportunities, this plan outlines actionable objectives that support academic excellence, student well-being, and institutional growth, ensuring the school remains mission-driven and future-focused.

Strategic Planning Team

Carl A. Semmler, Ed.D. - *President*

Mark J. Tolcher - *Principal*

Rev. Aaron Z. Huber - *Chaplain*

Nicole Seeling - *Director of Advancement*

Sean Condon - *Chairman of President's Advisory Council*

Brodie Bauders - *Parent*

Pemi Dominic - *Parent*

Leo D'Souza - *Parent*

Peter Grieshop - *Parent*

Frank Haynes - *Parent*

Geaneen Moore - *Parent*

Data Inputs

- Student, teacher, and parent surveys
- Historical quantitative data
- Quantitative data on competitive schools
- Overview of facilities
- Long-term campus growth plan
- Consultative bodies



Strategic Orientations

The "Goals" section of this plan is presented as "Strategic Orientations." The committee believes that a planning team should guide the school in identifying current and future needs while recommending the most effective direction to pursue. The team emphasizes that achieving each orientation should involve the most qualified and invested stakeholders within the community. We also recognize that this is a dynamic document, and the approach to each orientation will naturally evolve over time.

"Secret Sauce"

Based on survey data and discussions, the CTK community values preserving the "secret sauce" that defines the true Crusader experience. Key priorities include:

- maintaining small class sizes
- fostering feedback and collaboration among faculty
- retaining our top-notch faculty and staff members
- celebrating staff achievements
- promoting school spirit and
- character formation.

The plan emphasizes faith integration across academics and campus life, from theology curriculum and liturgical services to religious art and meditation spaces. Additionally, it highlights the importance of student leadership, varied educational pathways, safety enhancements, and programs like the Virtue in Education initiative, ensuring a holistic and faith-driven educational experience.

Catholic Identity

Survey data and committee discussions reveal that the Catholic faith thrives at CTK and should be nurtured further.

Key recommendations include:

- offering orientation and formation programs for students with limited prior faith formation
- investigating creating an OCIA program on campus
- expanding off-campus opportunities like mission trips and Cathedral visits
- establishing a one-on-one student mentoring system to enhance spiritual and personal growth
- building a chapel large enough for an entire grade.



Strategic Orientations

Educational Plan

Guidance Program

- Increase opportunities for counselors to connect with students.
- Begin a progressive and comprehensive college/career planning program in 9th grade.
- Add staffing for the social-emotional component (consultant, part-time, or full-time).
- Strengthen one-on-one relationships with admissions counselors of select schools.
- Create mentorship opportunities between adults and students.

Extension and Dual Enrollment

- Develop opportunities for students to earn college credits beyond AP courses.
- Establish opportunities for specialized electives.
- Ensure new programs align with Catholic identity and formational goals.
- Monitor AP curriculum changes and their impact on Catholic values.
- Choose courses and college partnerships intentionally.

Honors and Professional Pathways

- Plan short-term development for competitive programs like engineering and medicine.
- Utilize proven external curriculum packages for program success.
- Create dedicated spaces for study, research, and project work.

Academic Achievement Pathways

- Enhance support for students with accommodations (testing areas, modifications, alternative assessments).
- Explore increased push-in services and staffing for a resource room.
- Expand general-level course offerings.
- Address needs of ESL/ELL learners and at-risk students.

Vocational Pathways

- Develop vocational training opportunities on campus or with partner institutions.
- Seek funding for facilities and programs on campus.
- Leverage partnerships such as Charlotte's NASCAR history to explore auto mechanics programs.

Faculty Development

- Provide targeted professional development to support faculty in leading new academic initiatives.

Strategic Orientations

Athletic Facilities

CTK's reclassification to 2A in 2025 requires aligning the Capital Campaign for outdoor athletic updates with these changes.

Key priorities include:

- Increasing seating capacity.
- Addressing bathroom, parking, and access needs.
- Considering transportation solutions.
- Managing field overuse through improvements.
- Exploring short-term off-campus rental options.
- Ensuring facilities meet NCHSAA regulations for hosting playoff games.
- Accounting for the needs of IDA and IDEA-eligible individuals.

Long-term priorities:

- Incorporating the Little Diversified Inc. plan for north campus athletic expansion.

Facilities & Enrollment

With projected enrollment growth to 530 students by 2027-2028 and 600 students by 2033-2034, CTK should begin planning for permanent educational expansion:

- Temporary spaces may be utilized but with a clear intention for a permanent solution.
- Expansion plans should align with the school's educational goals and MACS growth plans.
- While phased growth is possible, larger expansions will be more cost-effective for long-term needs.

Demographic Data

Trends & Growth

Since our humble beginnings in 2011 with 28 students in a temporary facility in Mooresville, Christ the King Catholic High School has experienced substantial growth in enrollment, campus facilities, and academic & athletic offerings.

Enrollment

2011-2012 28 students at a temporary location in Mooresville.

2013-2014 99 students moved into our permanent location in Huntersville.

2017-2018 286 students.

2024-2025 434 students, with projected growth to 450 in 2025-2026.



Student Demographics (2017 - 2024)

Caucasian/Non-Hispanic

81% → 67%

Hispanic

11% → 14%

Black

5% → 3%

Asian

3% → 5%

Multi-racial

3% → 11%

Religious Demographics (2017 - 2024)

Catholic

95% → 87%

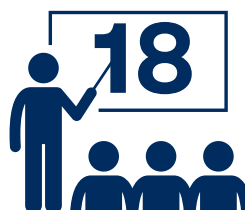
Non-Catholic

5% → 7%

No Religious Affiliation

0% → 6%

**Class Size
(average)**



**Student:
Teacher
Ratio**

8:1

Facilities

Timeline of Growth



2011-2012

28 students at a temporary location in Mooresville.



2013-2014

99 students moved into our permanent location in Huntersville.



Facilities

Timeline of Growth

2017-2018

2-story expansion with cafeteria opens for student body of 286 students.



2022-2023

Fulford Athletic & Activity Complex opens.



2024-2025

434 students, with projected growth to 450 in 2025-2026.

Partnering Together for a Bright Future

Diocesan Funded Academic Expansion Building



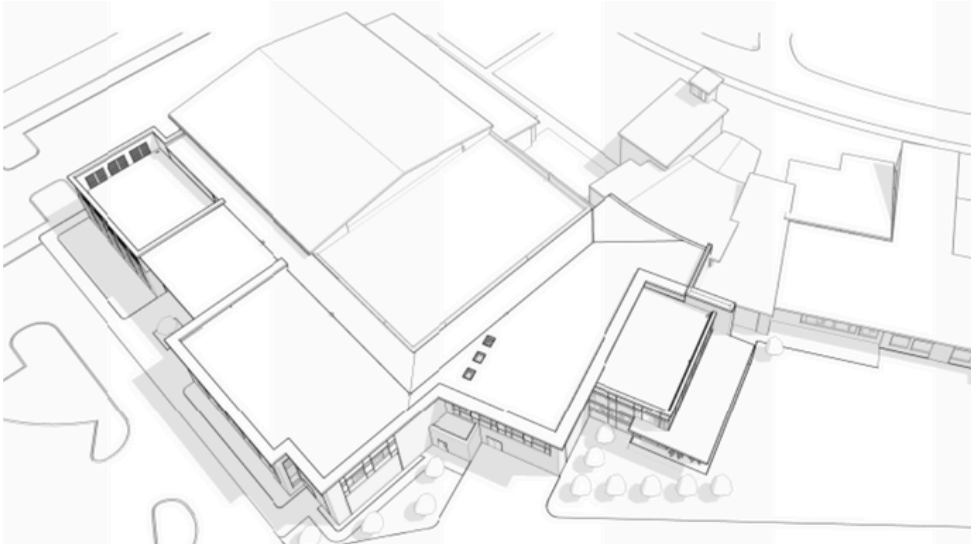
DIOCESE OF CHARLOTTE
CATHOLIC SCHOOLS

We are thrilled to announce the **fully funded** plans for **expanding** our academic building and campus footprint, made possible by the Diocese of Charlotte and the MACS Office. This expansion will strengthen our ability to provide a top-tier Catholic education while fostering a vibrant community of faith, academics, and leadership.



The new building will extend off the west and north sides of the existing Fulford Athletic & Activity Complex.

Since opening its doors in 2011 with a student body of fewer than 100, Christ the King Catholic High School has been blessed by the Diocese's unwavering generosity and commitment to our growth. Their continued investment in expanding the educational footprint of our campus has enabled us to meet the evolving needs of our growing community. This latest project will not only support our academic facilities but will also complete the unfinished portion of the Fulford Athletic and Activity Complex, enhancing the student experience and ensuring we can offer both academic and athletic excellence for years to come.



\$12 million commitment

Expansion Plans:

- **New Academic Wing:** Additional classrooms will be added, including dedicated arts spaces.
- **Advanced Facilities:** Collaborative learning spaces will prepare students for the future.
- **New cafeteria and repurposed spaces:** The expansion will create a new larger cafeteria, repurposing the old space as additional classrooms.
- **Upgraded Athletic Facilities:** The expansion includes an improved fitness center/weight room for our student-athletes.
- **Sustainability and Growth:** Designed with the future in mind, this project will ensure that our school can meet the needs of our growing student body for years to come.

**Target construction
start date:
August 2025**

**Targeted completion
date:
December 2026**



Capital Campaign

Building for the Future - Outdoor Athletic Facilities

\$1,000,000

TOGETHER IN
SPORT & SPIRIT

CHRIST THE KING



Our vision is to create state-of-the-art outdoor athletic facilities that reflect our commitment to excellence in sport and unity in spirit.

*To date, we've raised **\$1.0 million!***



OUR VISION

PROJECT SCOPE:

- complete field renovation, either natural grass or artificial turf
- expanded seating system with full press box
- permanent restroom facility
- emergency field access
- parking lot improvements

THE ROAD TO VICTORY

MVP: Grass Roots Level

\$3.6 Million Pledged

- 10 Row Open Deck Bleacher System
- Independent 3 Bay Press Box
- 6" Deep Full Renovation of Natural Turf Field
- Restroom Pavillion
- Emergency Access to Field
- Partial Parking Renovation

Playoff: Advantage Crusader Level

\$4.2 Million Pledged

- 1,500 Seat Closed Deck Seating Area ★
- Incorporated 3 Bay Press Box ★
- 6" Deep Full Renovation of Natural Turf Field
- Restroom Pavillion
- Emergency Access to Field
- Partial Parking Renovation

Champion: On Our Turf Level

\$5.0 Million Pledged

- 1,500 Seat Closed Deck Seating Area ★
- Incorporated 3 Bay Press Box
- Complete Artificial Turf Renovation of Field ★
- Restroom Pavillion
- Emergency Access to Field
- Partial Parking Renovation

Our student-athletes are leaders on and off the playing surface. We recognize the importance of providing them with the facilities they need to compete, train, and excel. In 2023, we opened the Fulford Athletic & Activity Complex for our indoor athletes. The **Together in Sport and Spirit** capital campaign is a bold step toward that future, ensuring that our outdoor facilities reflect the same standard of excellence that defines our academics and faith formation. This project is more than an investment in athletics—it is a commitment to the spirit, pride, and unity that make Christ the King a special place. If you haven't already done so, we invite you to join us in building a legacy that will serve Crusaders for generations to come.

\$5,000,000
Champion Level

\$4,200,000
Playoff Level

\$3,600,000
MVP Level

FUNDRAISING LEVELS



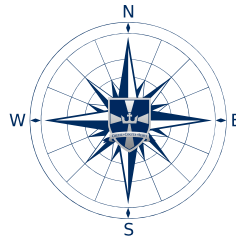
Academic Excellence

Preparing our Students for the Future

At Christ the King Catholic High School, we are committed to fostering a rigorous and dynamic academic environment that prepares students for success in college and beyond. Our curriculum offers Honors, AP, and Dual Enrollment courses across a variety of disciplines, including STEM, the humanities, and the arts. With new academic pathways in engineering, biomedical ethics, and broadcast media, we continue to expand opportunities that challenge and inspire our students. Rooted in faith and critical thinking, our academic program equips students with the knowledge, skills, and values to believe sincerely, think critically, and serve others in the name of Christ the King.



Honors Diploma
Horizon Project



Biomedical
Pathway



Engineering
Pathway



Broadcast &
Communications
Pathway

Notable Accomplishments

- **Expanded Course Offerings for 2025-2026 School Year:** AP Music Theory, AP Art & Design, and Dual Enrollment Latin III & IV
- College Board Advanced Placement **Platinum Honor Roll recognition**
- **College Acceptances:** Over 190 colleges and universities have accepted members of the Class of 2025, including prestigious institutions such as NC State, Chapel Hill, Clemson, Georgia, and Virginia Tech.
- **Military Academy Appointments** - Six (6) students accepted to U. S. Service Academies, with eight (8) combined appointments to West Point, Annapolis, and the Air Force Academy, totaling \$3 million in scholarships.



Christ the King is accredited through Lumen, an initiative of the Catholic University of America, ensuring rigorous academic and faith-based education standards.

Financial Vitality

Funding Success

Christ the King is part of the Mecklenburg Area Catholic Schools (MACS) consortium, with a shared budget of \$63.5 million.

- CTK's 2024-2025 operating budget is \$6.3 million.
- Tuition remains competitive, with a 3.5% increase in 2024-2025, and per-student costs (\$13,500) remain below both the national private school average (\$17,200 - 2022-23) and CMS public school spending (\$16,300 - 2022-23).
- A MACS-wide \$1,795 capital fee per family helps fund initiatives like CTK's new educational extension.

Endowments

Christ the King benefits from **three scholarship endowments** totaling \$434,000 and a new **Ad Meliora Endowment**, which supports campus improvements totaling \$36,000.

2024-2025 Highlights

- **\$30,000** banner sales for athletics programs
- **\$95,000** raised at the Silver & Blue Celebration
- **\$34,000** in annual fund donations
- **\$1,000,000** pledged for the capital campaign

\$463,000

budgeted spending for extraordinary programs not in ordinary budget



\$380,000 *raised to-date*

31% *of current families are PTO members*

38% *of current families are Athletic Association members*

15% *of current families donated to the Annual Fund*

73% *of students play a sport*

Auxiliaries & Extraordinary Programs

Supporting Excellence

2024 - 2025 Budgets

The **Annual Fund** and our three auxiliary organizations—the **President’s Advisory Council**, **Parent Teacher Organization**, and **Athletic Association**—play a vital role in funding and supporting the **extraordinary experiences** that define Christ the King Catholic High School. These groups help provide the resources necessary to enhance academics, athletics, fine arts, student life, and faith formation. Through their generosity, we can offer enriching programs, facility improvements, and essential support for our students and faculty, ensuring that CTK continues to thrive and grow.

INCOME	ATHLETICS	PTO	PAC	ANNUAL FUND	TOTAL
Fundraising & Donations	\$ 51,000	\$ --	\$ 75,000	\$ 92,000	\$ 218,000
Memberships/Fees	139,400	14,400	--	--	153,800
Sales/Admissions	55,200	2,300	--	--	57,500
Community					
Partners/Rental Income	25,500	750	--	--	25,250
Miscellaneous	6,500	--	1,000	--	7,500
TOTAL REVENUES	\$ 277,600	\$ 17,450	\$ 76,000	\$ 92,000	\$ 463,050
EXPENSES					
Athletics	\$ 270,045	\$ --	\$ --	\$ --	\$ 290,045
Campus Improvements	7,500	3,450	43,000	20,000	53,950
Teacher Programs	--	6,000	11,250	--	47,250
Student Programs	--	7,450	4,500	30,000	44,450
Academics	--	--	--	32,500	3,000
Endowment	--	--	--	3,000	6,500
Miscellaneous	--	550	4,120	6,500	4,670
TOTAL EXPENSES	\$ 277,545	\$ 17,450	\$ 62,870	\$ 92,000	\$ 449,865

Fundraising and donations for the respective organizations consist of the following:

Athletics - banner sales and corporate partnerships

PAC - the annual Silver & Blue Celebration event proceeds

Annual Fund - the Annual Fund drive

For 24-25, it is projected that the Silver & Blue Celebration event proceeds will fund the Annual Fund shortfall (\$34,000 in annual fund donations-to-date). 17

Sponsors & Donors

Supporting Excellence

2024-2025 Annual Fund Donors



Thank you to the families and community members who have supported the 2024-2025 Leave Your Mark Annual Fund drive. This year, the annual fund will provide monies for student programs including CTK days, clubs, and the carnival, teaching excellence awards, coaches' tuition supplements, student retreats, and the endowment fund.

Aaron & Ashley Allred
Robert Azzopardi & Kathleen Dyer
Steve & Michelle Benulis
Craig & Michelle Bischoff
Brooke Bradt
Bob & Wendy Bruno
Michael & Deborah Buchsbaum
John & Susan Bukowksi
Dante & Theresa Campos
Doug & Caroly Cashman
Cristobal Castillo & Elena Fessenko
Matthew & Mary Beth Chambers
James & Claire Clark
Craig & Tami Coffey
Sean & Annie Condon
Julie Corrigan
Ian & Christina D'Abreo
Christopher D'Allura
David & Jean DeVries
Gregory & Amy Dawson
Arthur & Nancy Donaldson
Christopher & Lisa Dulski
Jade & Annsley Ehret
Jeff & Cara Ehret
Kevin & Maria Eisert
Michael & Mashudah Erfurt
Micheal & Virginia Erfurt
Brian & Kathy Fadden
William & Carrie Ferguson

Christopher & Amy Ferrick
Alvin & Cher Ferrouillet
Jason & Kathy Fickes
Rick & Tammie Filiault
Doug Fogle
Stephen & Ana Foglesong
Douglas & Michelle Ford
Michael & Lindsay Fortuna
Chris & Genevieve Gere
Gabrielle Grayson
Ted Hanes
Nicholas Haywood
Garland & Cathie Jackson
Christopher & Allison Jones
Mike & Heather Kels
Patric & Jessica Klein
Mike & Allyson Koster
Scott & Patricia Lagueux
Jim & Christy Lilley
Roy Matthews
Emilio & Patricia Medina
Jeff & Maureen Milligan
Craig & Margaret Mundy
Brian & Staci Nicholson
Tiemi Nomura-Halverson
Stephen & Iris O'Connor
Bill O'Donnell
Mike & Kristen O'Malley
Christopher & Anna Owens
Russ & Angie Parkhouse
Scott & Rose Paul
Joseph Perna

Julie Person
Brian & Pamela Ragan
Jim & Liz Roche
Michael & Krista Ryan
Supriya & Barbara Samanta
Greg & Jen Schaperjohn
Lawrence & Merlene Schauf
Alex Seeling '19
Taylor Seeling '17
Greg & Nicole Seeling
Payton Seeling '22
Carl & Christine Semmler
Ross & Mary Shingledecker
Matthew & Erin Socha
Timothy & Shelby St. Romain
Adam & Aubrey Stevens
Marie Strickland '17
Don & Erin Tampoya
Mark & Kelly Tolcher
Arthorne Tran & Minhchau Thi Vu
Andy & Jen Tuschong
Bryan & Holly Walsh
Chris & Rebecca Wargin
Jeff & Sally Watson
Lee & Deena Wells
John Welsh



Sponsors & Donors

Supporting Excellence

2025 Silver & Blue Celebration

The \$95,000 raised will help us meet our Annual Fund goal this year and fund some of the PAC's initiatives!

THANKS TO OUR SPONSORS

PRESENTING SPONSOR



DIAMOND SPONSOR



The Brawley Estate

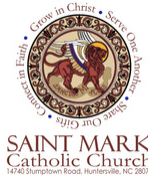
EST 1904

PLATINUM SPONSOR



BARRINGER
CONSTRUCTION

SILVER SPONSORS



BLUE SPONSORS



**Corporate Security
& Fire Systems, LLC**



CHAMPION SPONSORS



Sponsors & Donors

Supporting Excellence

2025 Silver & Blue Celebration



THANKS TO OUR FAMILY SPONSORS

PRESENTING SPONSOR

Mike & Katie Reimels

DIAMOND SPONSOR

Emilio & Patricia Medina

BLUE SPONSORS

Anderson & Julie Caperton

Craig & Margaret Mundy

Phil & Tami Puma

CRUSADER SPONSOR

Sean & Annie Condon

CHAMPION SPONSORS

Brian & Elizabeth Burke

Matthew & Mary Beth Chambers

Mike & Natalie Clapp

Brian & Kelly Decker

Matthew & Carly Filiault

Pat & Jen Gorman

Peter & Caroline Hohensee

Wyn & Kari Kittredge

Peter & Melissa Miller

Zach & Kris Nellas

Steve & Iris O'Connor

Bill O'Donnell

Greg & Jen Schaperjohn

Greg & Nicole Seeling

Adam & Aubrey Stevens

Wes & Lisa Strickland

Alan & Marlena Travers

John & Amber Tsumas

Todd & Tracey Zimmerman

Sponsors & Donors

Supporting Excellence

2025 Silver & Blue Celebration



BACK to the 80'S

THANKS TO OUR DONORS

Joe & Sara Aiello William & Carrie Ferguson
 Craig & Cassidy Bischoff Wes & Lisa Strickland

THANKS TO OUR IN-KIND DONORS



WHIT'S
FROZEN CUSTARD
made fresh daily



PHOTO BOOTH

Jeff & Sally Watson



Buttermilk Sky
PRE - mixed



blink
Facility Solutions

Athletics

Platinum, Gold & Silver Level Sponsors



Bronze Sponsors

Carolina Factory
 The Crazy Pig
 Dr. James Kettinger
 Geaux Elite

Emmett & Kellie Harrigan
 The Links (Mike & Natalie Clapp)
 Net Positive Pools
 Next Home (Brian & Kelly Decker)

Table & Board (Chris & Julie Wilkinson)
 Bryan & Holly Walsh
 Whit's (Jade & Annsley Ehret)

Pledges

Supporting Excellence

Together in Sport & Spirit Capital Campaign

Thank you to the families and community members who have supported the Together in Sport & Spirit Capital Campaign for our Outdoor Athletic Facilities.

Aaron & Ashley Allred
Joseph & Erin Bailey
David & Irais Balmaceda
Lee & Mary Ann Barnett
Mark & Diane Bernicke
Craig & Michelle Bischoff
Adam & Alicia Bowman
Jonathan Boyce
John & Susan Bukowski
Brian & Elizabeth Burke
Marc Campbell
Ian & Annabelle Campos
Anderson & Julie Caperton
Doug & Caroly Cashman
Melissa Causey
Matthew &
Mary Beth Chambers
Brian & Courtney Clair
Stephen & Christine Clayton
Craig & Tami Coffey
Sean & Annie Condon
Brian & Kelly Decker
David & Jean DeVries
Arthur & Nancy Donaldson
Seamus & Traci Donaldson
Markus & Sarah Duckworth
Gerald & Janet Enos

Jeremy & Ali Fritz
Christopher & Genevieve Gere
Peter & Kelley Grieshop
Ed & Michele Hartle
David & Tracie Hoagland
Fred & Karen Holtz
Father Aaron Huber
Brendan & Stacie Hughes
Bob & Jackie Hull
Brian & Kristyn Keegan
Brion & Kimberly Kennelly
Patric & Jessica Klein
Matt & Brianne Kojis
Mike & Allyson Koster
Drew & Bobbi Jo Lazarus
Christopher & Meghan Lemke
Jim & Christy Lilley
Jim Loftin
Patrick & Wendy Malloy
Dylan & Jill Matera
Matthew & Tracey McKenna
Art & Georgette McMahon
Emilio & Patricia Medina
Bob & Donna Miller
Jeff & Maureen Milligan
Craig & Margaret Mundy

Jeffrey & Kathy Munn
Zach & Kris Nellas
Stephen & Iris O'Connor
Mike & Kristen O'Malley
Russ & Angie Parkhouse
Jim & Laura Phillips
Brad & Amanda Rametta
Matthew & Catherine Reyes
Jim & Liz Roche
Greg & Nicole Seeling
Carl & Christine Semmler
Matthew & Jillian Shute
Matthew & Erin Socha
Brett & Christine Sowell
Wes & Lisa Strickland
Robert & Melanie Taylor
Jeff & Marybeth Tearpock
Mark & Kelly Tolcher
John & Amber Tsumas
Andy & Jen Tuschong
Bryan & Holly Walsh
David Walsh
Chris & Rebecca Wargin
Jeff & Sally Watson
Joe & Beth Zuhosky



Auxiliaries & Extraordinary Programs

Supporting Excellence

2023 - 2024 Financial Results

Thanks to the generosity of our donors, the Annual Fund and auxiliary organizations made a **profound impact** on Christ the King this year. With over **\$176,000** in donations, we were able to help fund **\$380,000** in extraordinary programs and initiatives that enrich every aspect of our school community. These funds supported our **athletic programs**, provided new **microphones** for the theater, and honored **excellence in teaching** through awards and professional development. Student life thrived with funding for campus improvements, the **school carnival**, and other **student-centered programs**. Additionally, investments in our **endowment** help ensure the long-term success of Christ the King. Your generosity continues to leave a lasting mark on our students, faculty, and campus.

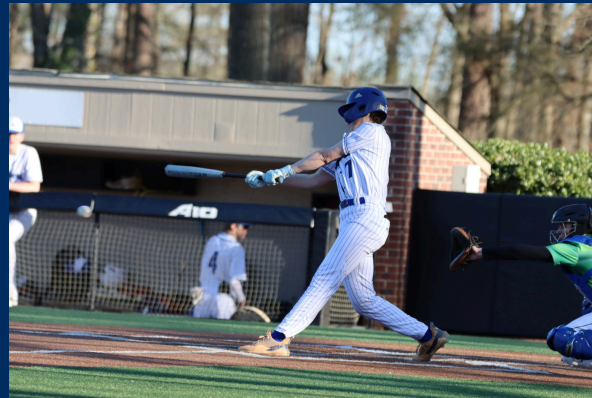
INCOME	ATHLETICS	PTO	PAC	ANNUAL FUND	TOTAL
Fundraising & Donations	\$ 53,026	\$ --	\$ 77,072	\$ 43,568	\$ 173,666
Memberships/Fees	106,025	8,978	--	--	115,003
Sales/Admissions	60,793	7,354	--	--	68,147
Community Partners/ Rental Income	27,860	767	--	--	28,627
Transfer PAC to Athletics	12,000	--	(12,000)	--	--
Miscellaneous	7,483	133	1,418		9,034
TOTAL REVENUES	\$ 267,187	\$ 17,232	\$ 66,490	\$ 43,568	\$ 394,477
EXPENSES					
Athletics	\$ 277,747	\$ --	\$ --	\$ 16,400	\$ 294,147
Campus Improvements	10,298	1,878	--	6,200	18,376
Teacher Programs	--	4,311	6,202	12,918	23,431
Student Programs	--	5,947	2,874	3,516	12,337
Arts	--	--	22,621	5,133	27,754
Academics	--	--	1,000	1,000	2,000
Endowment	--	--	--	3,144	3,144
Miscellaneous	--	588	120	2,144	2,752
TOTAL EXPENSES	\$ 288,045	\$ 12,624	\$ 32,817	\$ 50,455	\$ 383,941

2023-2024 Year In Review

Impact of Your Gifts



CTK athletes **thrive** because of the generosity and commitment of our community. Your support—through **banner sponsorships**, **athletics memberships**, team fees, concessions, admissions, and community partnerships—funds essential aspects of our programs. These contributions help cover the cost of field rentals, referee fees, uniforms, HUDL technology, equipment, field painting, and more. Thanks to you, our student-athletes have the resources they need to **compete, grow, and represent CTK with pride.**





Your contributions last year helped fund over **\$27,000** in new microphones for our theatrical performers, who brought the magical world of Dr. Seuss to life onstage.

The annual fund also provides funding for **student-led clubs**, **stipends** for teachers, and the **year-end carnival celebration**.





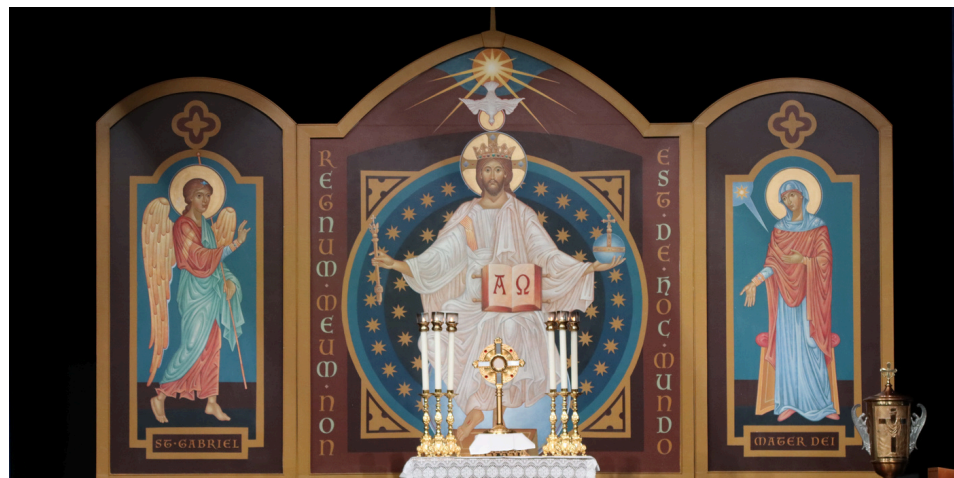
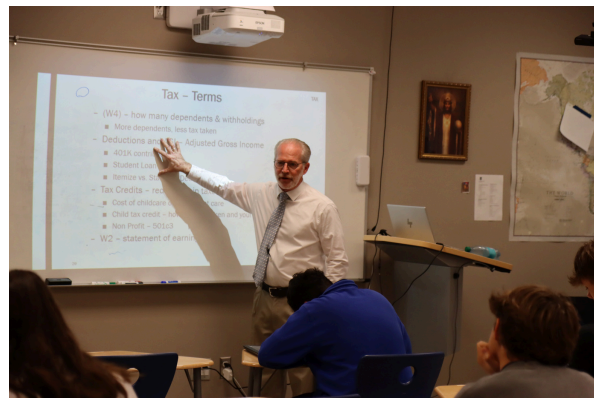
Jack Peele Awards for Teaching Excellence 2023-2024 Recipients



The **teaching excellence awards** funded by the annual fund provide a monetary award for **outstanding educators**.

The **PTO**, funded by your memberships, plays a vital role in **enhancing the student experience** and **supporting our teachers and staff**.

Campus improvements funded through your contributions included the beautiful **reredos** backdrop which graces our altar during school Masses, as well as the expansion/upgrade of the **weight room**.



Sponsors & Donors

Supporting Excellence

2023-2024 Annual Fund Donors

Thanks to the generosity of our donors to the Annual Fund. Donations to the annual fund provided money for the teaching excellence awards, state-of-the-art microphones for the theater program, tuition supplements for coaches, the end-of-year carnival, student-led clubs, the beautiful new reredos used for Masses, and a contribution to the endowment for campus improvements.

Robert Abbate

Jamie & Erin Andrews

Joseph & Erin Bailey

Craig & Michelle Bischoff

Mark & Brooke Brady

Michael & Michelle Buchheit

Dante & Theresa Campos

Doug & Carolyn Cashman

Matthew & Mary Beth Chambers

Brian & Courtney Clair

Mike & Natalie Clapp

James & Claire Clark

Sean & Annie Condon

Ian & Christine D'Abreo

Leo & Flora D'Souza

Gregory & Amy Dawson

David & Jean DeVries

Luis & Mari Diaz

Mark & Melissa Dometrovich

Christopher & Lisa Dulski

Stephen & Kelli Dunn

Jade & Annsley Ehret

Aileen Doyle

William & Carrie Ferguson

Christopher & Amy Ferrick

Douglas & Michelle Ford

Michael & Lindsay Fortuna

Chris & Genevieve Gere

Richard & Valerie Glass

Cesar & Paula Gonzalez

Ted Hanes

Emmett & Kellie Harrigan

Nicholas Haywood

Peter & Caroline Hohensee

Fred & Karen Holtz

Garland & Cathie Jackson

Joe Katt

Jonathan & Jasmin Keegan

Mick & Allyson Koster

Scott & Patricia Lagueux

Drew & Bobbi Jo Lazarus

Joseph & Tiana Losinski

Pierre & Jeannette Magras

Gabriel & Hilda Manjarrez

George & Kathleen Martin

Matt & Tracey McKenna

Emilio & Patricia Medina

Matthew & Xi Miano

Matthew & Dawn Mixa

Micheal & Jeanne Moulton

Brian & Staci Nicholson

Tiemi Nomura-Halverson

Stephen & Iris O'Connor

Bill O'Donnell

Eric Oaks

Curtis Parks & Jennifer Ryan

Scott & Rose Paul

Kevin & Melissa Pote

Chris & Michele Ricchiuto

Jim & Liz Roche

Michael & Krista Ryan

Supriya & Barbara Samanta

Greg & Jen Schaperjohn

Lawrence & Merlene Schauf

Frank & Erin Schotthoefer

Alex Seeling '19

Taylor Seeling '17

Greg & Nicole Seeling

Payton Seeling '22

Carl & Christine Semmler

Matthew & Jillian Shute

Brett & Christine Sowell

Timothy & Shelby St. Romain

Thomas & Asha Stern

Marie Strickland '17

Mark & Kelly Tolcher

Jonathan & Theresa Utrup

Michael & Sarah Varricchio

Bryan & Holly Walsh

Lee & Deena Wells

John Welsh

Michael & Leigh Wenning

Bill & Ginene Winchester

Janine Yordy

Rick & Natalie Zoerb



Sponsors & Donors

Supporting Excellence



2024 Silver & Blue Celebration

Donations to the 2024 Silver & Blue Celebration funded over \$22,000 in state-of-the-art microphones for the theater program and will fund two years of lease payments on a new activity bus for athletic and co-curricular programs.

Presenting Sponsor



Reimers, Miller, Paterra
FAMILY & COSMETIC DENTISTRY

Diamond Sponsor



The Brawley Estate
EST 1904

Silver Sponsors



Educator Sponsors

Champion Sponsors





2024 Silver & Blue Celebration

Presenting Sponsor

Mike & Katie Reimels

Diamond Sponsor

Emilio & Patricia Medina

Silver Sponsors

Barringer Construction Ian & Annabelle Campos
Belmont Abbey College Saint Mark Catholic Church
Little Diversified Architectural Consulting

Educator Sponsors

Corporate Security & Fire Systems, LLC Art & Georgette McMahon

Blue Sponsors

William & Carrie Ferguson Bill O'Donnell
Craig & Margaret Mundy Todd & Tracey Zimmerman

Crusader Sponsors

Brad & Kelly Funk Joe & Beth Zuhosky

Champion Sponsors

Matthew & Mary Beth Chambers Mike & Natalie Clapp
Sean & Annie Condon Doug & Melinda DeJong
Pete & Pemi Dominic Mike & Michelle Gervasini
Pat & Jen Gorman Brian & Sherry Harris
Greg & Nicole Seeling Jim & Laura Phillips
Greg & Jennifer Shaperjohn Thomas & Asha Stern
Adam & Aubrey Stevens John & Amber Tsumas



Sponsors & Donors

Supporting Excellence

Athletics

Donations to the 2024 Silver & Blue Celebration funded over **\$22,000** in state-of-the-art **microphones** for the theater program and will fund two years of lease payments on a **new activity bus** for athletic and co-curricular programs.

Platinum, Gold & Silver Level Sponsors



Bronze Sponsors

- Duke Almond
- Kress Commercial (Todd & Tracey Zimmerman)
- PolyTech
- Teammates for Life (Mike & Natalie Clapp)

- The Stone Group
- Bryan & Holly Walsh
- Whit's (Jade & Annsley Ehret)



Mission

Students at Christ the King Catholic High School are challenged to believe sincerely, think critically, act responsibly, and serve others in the name of Christ the King.

Beliefs

We believe individuals should model and integrate the teachings of Christ the King in all areas of conduct in order to nurture faith and inspire action.

We believe prayer, worship, and reflection are essential elements, which foster spiritual and moral development of our students, faculty, and staff.

We believe in cultivating a supportive, healthy, and challenging environment that recognizes the dignity, needs, and diversity of all individuals.

We believe academic excellence is a priority as teachers set high expectations of performance while providing appropriate resources and academic challenges.

We believe opportunities should be provided for parents and the local community to participate in and support Christ the King Catholic High School.



DIocese OF CHARLOTTE
CATHOLIC SCHOOLS

Mission

In communion with our families and parishes, we form students to be virtuous disciples of Jesus Christ. Rooted in Scripture, Tradition, and the defined teachings of the Catholic Church, our students pursue excellence of intellect, heart, and soul with salvation as the ultimate goal.

Vision

To provide an immersive, accessible and authentically Catholic environment where every student can respond to their vocation to holiness and pursue excellence as fully alive disciples of Christ who transform the world. The clarity of this purpose finds full expression in a robust Catholic culture, holistic educational formation, committed operational vitality, and effective governance and leadership.