



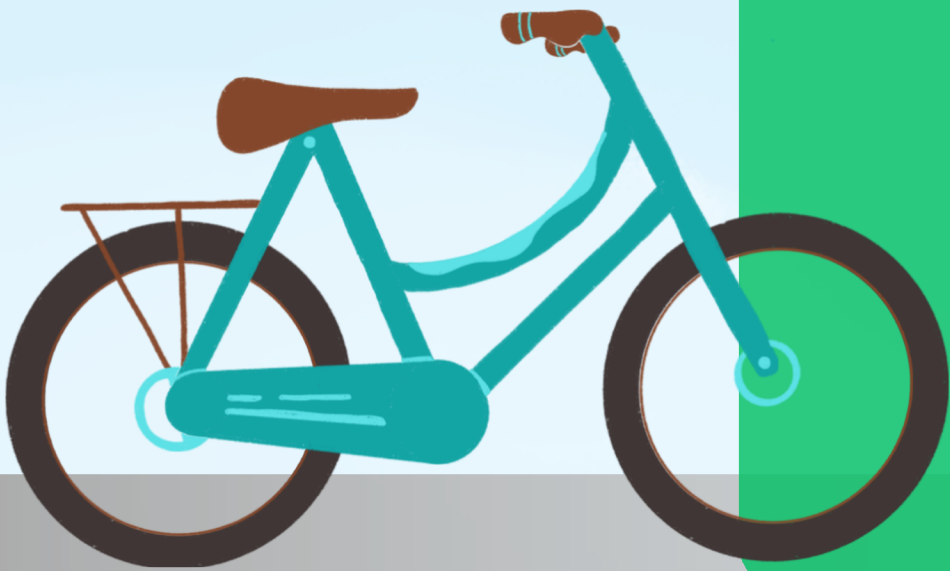
STANDARDS BASED MARKS

EX = EXCEEDED



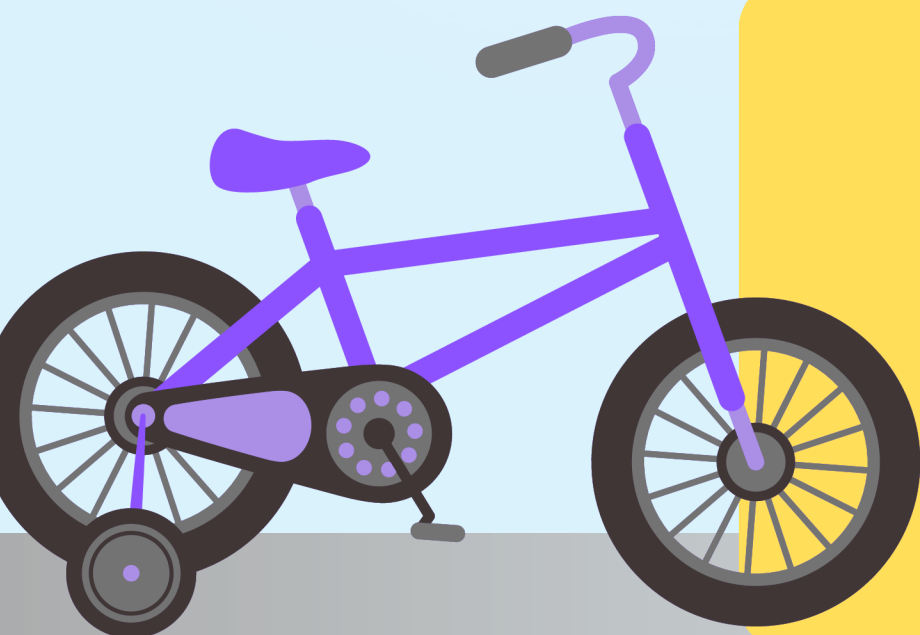
I have a deep understanding of the standard and can demonstrate it in new and complex ways.

PR = PROFICIENT



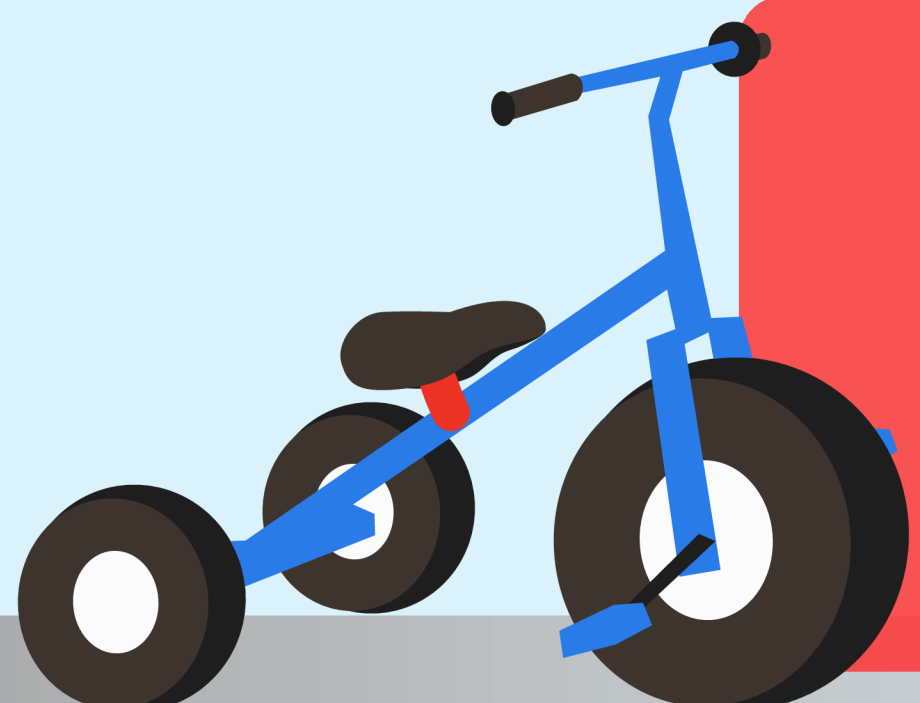
I meet the expectations described in the standard and can do it independently.

AP = APPROACHING



I can do the simpler parts of the standard independently, but I still need some support from my teacher on the harder parts.

BE = BEGINNING



I still need help and support from my teacher to do the simpler parts of the standard.