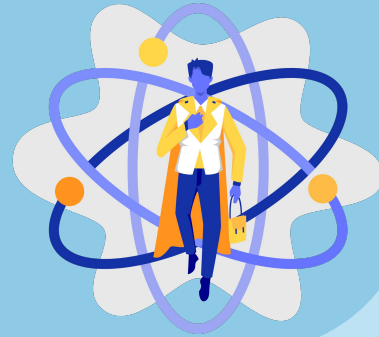
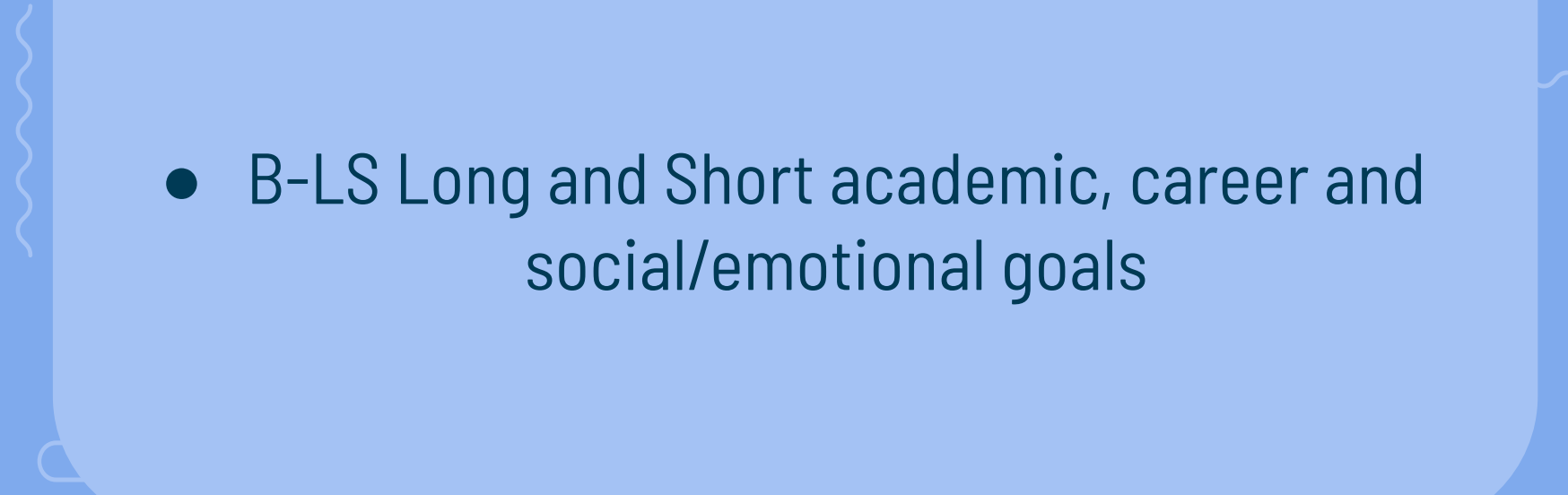


# SUCCESS, SCHOOL, SELF.





# **ASCA Student Standard- Mindset & Behavior**

- B-LS Long and Short academic, career and social/emotional goals
- 

# OBJECTIVE

- Students will use their career goals to begin to create a long-term educational plan.



# LET'S GET STARTED

## TODAY'S AGENDA

**01**

SMART Goal  
Review

**02**

Personality Test-  
California Colleges or  
16 Personalities Test

**03**

Career  
Exploration

**4**

Reflection

# SMART Goal

**S**pecific



**M**easurable



**A**ttainable



**R**elevant



**T**ime-based



# GOAL!

## Specific

What exactly do you want to achieve?

Good goals are clear and defined

## Measurable

How will you know when you've achieved it?

You will need to be able to track daily progress

## Achievable

How can the goal be accomplished?

List the specific tasks you will need to complete

## Relevant

Why is this goal important to you?

Does this goal help add to your plans for the future?

## Time-bound

When do you want to achieve this goal?

Set your target date so you can guide your work toward a successful completion



# Examples:

S	After high school graduation in 2028, I plan on a career in, _____
M	I will know I have met my career goal when, _____.
A	I will focus on turning in class assignments on time and more involvement in school and community activities that lead to my career ambitions.
R	By graduating with the highest grades possible, I will have more opportunities. I can get a good job and make money to support my family.
T	I will focus on earning strong grades during 9th grade so I can earn 60 credits I need to stay on track to graduate high school and meet my career ambition.

# CaliforniaColleges.edu



Register Your Account



## CaliforniaColleges.edu

Your free, all-access pass to a bright future.

**Students**, find your path and build knowledge, skills, and a plan to achieve your dreams. **Parents and educators**, guide and support them every step of the way.

## Sign In

Sign In

[Forgot Password?](#)

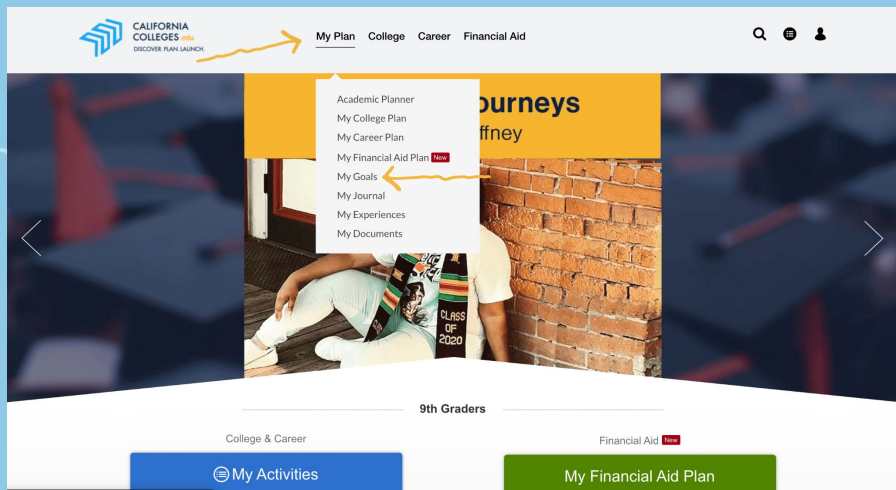


Sign in with Google

**Reminder:** CaliforniaColleges.edu is a tool you can use to:

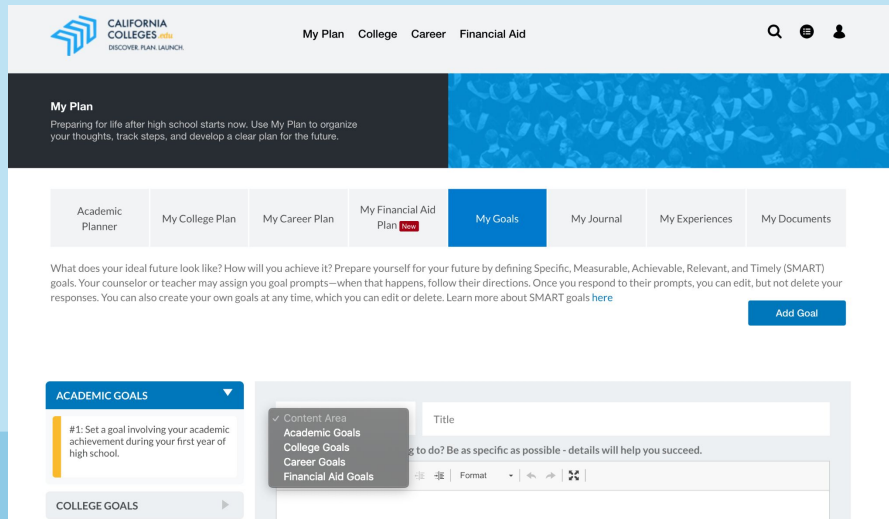
- Discover your interests and values
- Find careers, colleges, or training to reach your goals.
- Learn how to find money to pay for college.
- Launch college and financial aid applications.
- Monitor all your progress in one place.

If you don't remember your password, try **nImusd2028**



# SMART Goal

1. Sign in to CaliforniaColleges.edu
2. Hover over "My Plan"
3. Click on My Goals
4. Click on Add Goal
5. Select Academic Goal
6. Create your SMART Goal





# Know Yourself

At the top of the screen, go to “Career” and, click “Personality”

**Personality**  
This assessment asks you a series of questions to determine your personality type and help match that type to careers.

### Determine Your PERSONALITY TYPE

You make unique decisions and actions that chart a path through your life. These decisions and actions make up your personality type.

<p><b>Introvert</b> Describes individuals who are reserved, and enjoy being around large groups, but often desire time alone to re-energize.</p>	<p>I</p> 	<p><b>Extrovert</b> Describes individuals who are outgoing and energized by being around other people.</p>
<p><b>Sensor</b> Describes individuals who process ideas and reach conclusions based on facts and information gleaned from their senses.</p>	<p>S</p> 	<p><b>Intuitive</b> Describes individuals who process ideas and reach conclusions based on identifying trends, reading between the lines, and viewing the larger picture.</p>

This tool will reveal your true personality and provide tips to achieve success, in a way that works for you.

### **This usually takes about 15 minutes. To get the best results:**

- Relax, there are no right or wrong answers
- Just choose the options that are most like you
- Don't be influenced by what others may expect of you

### **Based on accurate answers, your results will help:**

- You find educational and career options that are a good fit
- Make studying, learning and working easier and more effective
- You understand others and others understand you

[CONTINUE](#)

# Sample Question:

English ▾

0%

Choose the option that is most like you.

I have a lot of friends I like to spend time with, and usually enjoy meeting new people. I am in constant contact with friends and often try to get them together to have fun and go places. Just thinking about getting something going gets me excited and motivated.

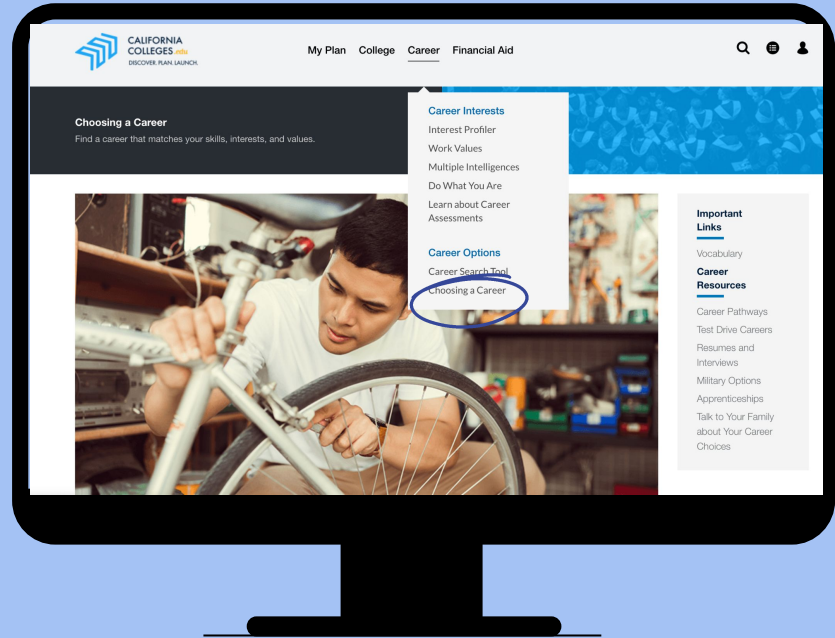
I am a somewhat private person. I have very close friends I've known for years. I like to do things with them, but I also enjoy spending time alone – doing things I like to do or just relaxing. In social situations, especially new ones, I often prefer to listen and observe awhile before getting involved.

◀ BACK

NEXT ▶

# “Choosing a Career” Article

Read the article and see how it connects to your future career choice



+



**THANK  
YOU!**

**Don't forget  
to mark this  
task as  
complete**

