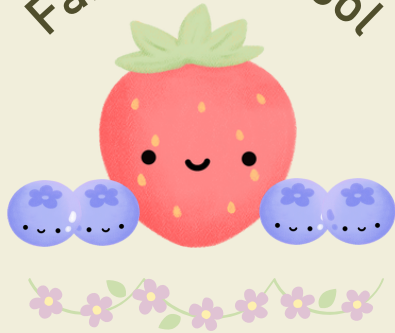


Gant and Tincher Menu

April 2025

Farm to School



ITEMS OF THE MONTH:

BLUEBERRIES & STRAWBERRIES

Key



House-Made



Locally-Grown & Sourced



Vegetarian Entrees



Vegan Entrees

All fruits, fresh vegetables, & cereals are vegan.



Contains Pork



All grains are whole-grain rich
Except cinnamon roll



New Item

WITHOUT NOTICE:



Scan QR code for more menu information.



MON	TUE	WED	THU	FRI
	BREAKFAST Egg & Cheese Croissant Pineapple LUNCH Cheeseburger/Hamburger Breaded Cheese Ravioli w/Marinara Fresh Orange Wedges Fresh Baby Carrots Lettuce & Pickle Cup	BREAKFAST House-Baked Cinnamon Roll Peaches LUNCH Hot Dog Quesadilla Fresh Banana Sweet Potato Fries Chocolate Pudding	BREAKFAST Pan Dulce Concha Strawberry Applesauce LUNCH Chicken Chow Mein Grilled Cheese Sandwich Chef Salad Farm to School Blueberries Fresh Broccoli	BREAKFAST Breakfast Bites w/Fruit Dip Variety Fruit LUNCH Spicy Bean Nachos Pepperoni Pizza Frozen Peach Cup Southwest Beans w/Cheese
BREAKFAST Cinnamon Waffle or Manager's Special Dried Cranberries LUNCH Corn Dog Teriyaki Meatballs w/Rice or Manager's Special Fresh Apple Slices Fresh Baby Carrots	BREAKFAST Egg, Cheese, & Turkey Sausage Breakfast Burrito or Manager's Special Pineapple LUNCH Cheesy Garlic Bread w/Marinara Chicken & Cheese Taquitos or Manager's Special Fresh Orange Wedges Mixed Salad	BREAKFAST House-Baked Cinnamon Roll or Manager's Special Peaches LUNCH Chicken Tamale Pancakes & Sausage or Manager's Special Farm to School Blueberries Potato Rounds	BREAKFAST Cinnamon Crumb Cake or Manager's Special Fresh Apple Slices LUNCH Cheese Pizza Chili Cheese Nachos or Manager's Special Fresh Banana Fresh Broccoli	 Admission Day - No School
14	15	16	17	18
SPRING RECESS				
Tincher only. Gant - refer to Elementary Menu				
BREAKFAST Egg, Cheese, & Turkey Sausage Breakfast Burrito Yogurt with Granola LUNCH Corn Dog Quesadilla	BREAKFAST Pan Dulce Concha Yogurt with Granola LUNCH Kickin' Tenders w/Rolls Chicken Sliders	BREAKFAST House-Baked Cinnamon Roll Yogurt with Granola LUNCH Chickpea Butter & Jelly (CB&J) Sandwich Cheeseburger	BREAKFAST Cinnamon Waffle Yogurt with Granola LUNCH Grilled Cheese Sandwich Boneless Chicken Wings & Waffle Farm to School Strawberries	BREAKFAST Mini Maple Pancakes Yogurt with Granola LUNCH Chicken Sandwich Pepperoni Pizza
21	22	23	24	25
Tincher & Gant				
BREAKFAST Pizza Stick Yogurt with Granola LUNCH Beef & Bean Burrito Orange Chicken w/Rice	BREAKFAST Breakfast Bites Yogurt with Granola LUNCH Hamburger Macaroni & Cheese	BREAKFAST Egg, Cheese, & Turkey Ham Croissant Sandwich Yogurt with Granola LUNCH Teriyaki Meatballs w/Rice Pancakes & Sausage	OFFERED DAILY BREAKFAST: <ul style="list-style-type: none"> Fruit Whole-Grain Cereals Yogurt with Granola String Cheese 100% Fruit Juice Low-Fat White Milk Nonfat Chocolate Milk 	OFFERED DAILY LUNCH: <ul style="list-style-type: none"> Fruits & Vegetables Yogurt with Granola Low-Fat White Milk Nonfat Chocolate Milk <p>Only grades 6-8:</p> <ul style="list-style-type: none"> Salads & Sandwiches 100% Fruit Juice
28	29	30		