



New England School Development Council

**Concord-Carlisle Regional Schools
Concord, MA**

School Year 2024-25 Enrollment Projection Report

Copyright, New England School Development Council, 2024

Table of Contents

Section	Page
Enrollment Summary.....	1
Historical Enrollment Table.....	2
Grades K - 12 Historical Enrollment Graph.....	3
Grades K - 8 Historical Enrollment by Town.....	4
Grades 9 - 12 Historical Enrollment Graph.....	5
Projected Enrollment Table.....	6
Grades K - 12 Projected Enrollment Graph.....	7
Grades K - 8 Projected Enrollment by Town.....	8
Grades 9 - 12 Projected Enrollment Graph.....	9
Historical & Projected Enrollment Graph.....	10
Historical & Projected Enrollment in Grade Combinations Line Graph.....	11
Historical & Projected Enrollment in Grade Combinations Stacked Column Graph.....	12
Birth to Kindergarten Graph.....	13
Additional Information	14
New England's PK-12 Enrollment Trends.....	15
Projection Methodology and Reliability	16

Concord-Carlisle RSD Enrollment Summary

NESDEC is pleased to send you this report displaying the past, present, and projected enrollments for your District. It is important to update enrollment projections every year to identify changes in enrollment patterns. Ten-year projections are designed to provide your District with yearly, up-to-date enrollment information that can be used by boards and administrators for effective planning and allocation of resources. We received the enrollment data from the District, and we assume that the method of collecting this data has been consistent from year to year.

Birth data informs Kindergarten enrollment. Each fall, NESDEC secures birth data from State sources, providing a snapshot in time as to actual and provisional births as reported by the State, and then uses this birth data to predict Kindergarten enrollments. We only use Fall birth data to assure consistency in reporting from year to year. Estimated births, which are an average of the previous five years of birth data, are based on this same snapshot. NESDEC acknowledges the variability of the provisional and the estimated birth data, and notes that the projected Kindergarten enrollments may serve as a guide to future planning.

Enrollment projections are more reliable in Years #1-3 in the future. Projections four to ten years out may serve as a guide to future enrollments and are useful for planning purposes. In light of this, NESDEC has added a “Spring Update Refresher” enrollment projection at no cost to affiliates. For more information, please refer to the Projection Methodology and Reliability section of this document.

The NESDEC combined districts enrollment projections fell within 129 students of the K-12 total, 3,702 students projected vs. 3,573 enrolled. The enrollment for Grades 9-12 fell within 76 students, 1,189 projected vs. 1,113 enrolled.

Over the next three years, District Grades K-8 enrollments are projected to increase by 21 students and District Grades 9-12 enrollments are projected to decrease by 44 students, as students move through the grades.

Historical Enrollment

School District: **Concord-Carlisle RSD, MA**

11/20/2024

Historical Enrollment By Grade																			
Birth Year	Births*	School Year	PK	K	1	2	3	4	5	6	7	8	9	10	11	12	UNGR	K-12	PK-12
2009	148	2014-15	35	250	304	300	312	320	314	313	287	328	338	311	310	296	0	3983	4018
2010	142	2015-16	41	279	259	314	293	301	319	314	300	288	333	333	309	313	0	3955	3996
2011	127	2016-17	42	260	295	270	318	294	303	311	324	296	301	334	325	315	0	3946	3988
2012	132	2017-18	40	283	262	302	282	308	308	301	325	325	295	307	337	333	0	3968	4008
2013	157	2018-19	39	266	296	269	304	277	310	311	308	328	330	306	298	340	0	3943	3982
2014	120	2019-20	39	261	279	303	281	302	280	318	305	310	344	325	318	294	0	3920	3959
2015	137	2020-21	48	228	270	282	297	277	293	284	309	305	339	340	322	311	0	3857	3905
2016	151	2021-22	73	255	252	273	303	294	277	294	282	317	316	332	339	325	0	3859	3932
2017	141	2022-23	66	249	268	261	274	294	285	286	286	277	316	318	329	340	< 10 **	3789	3855
2018	129	2023-24	79	265	259	285	273	278	293	281	280	287	274	316	309	322	< 10 **	3730	3809
2019	146	2024-25	70	244	279	255	287	273	274	292	277	279	269	254	303	287	< 10 **	3577	3647

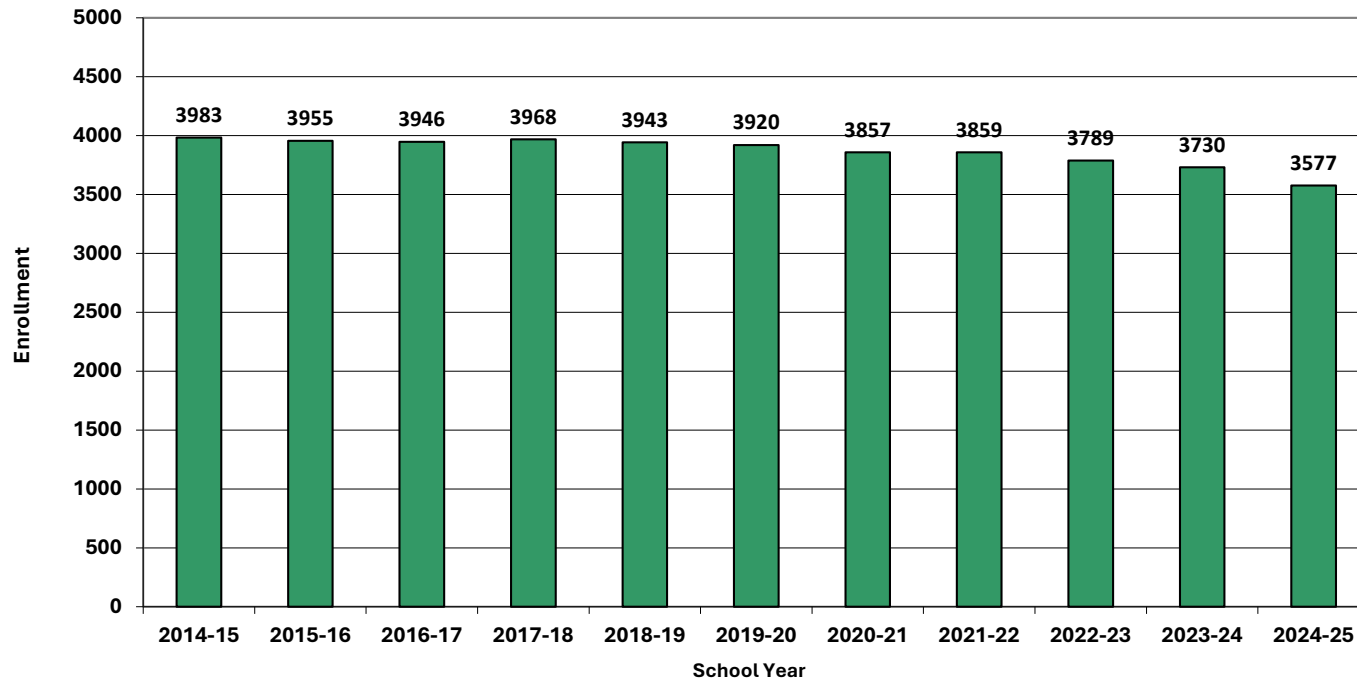
*Birth data provided by Public Health Vital Records Departments in each state.

** < 10 Not reported, to protect subgroups with fewer than 10 students.

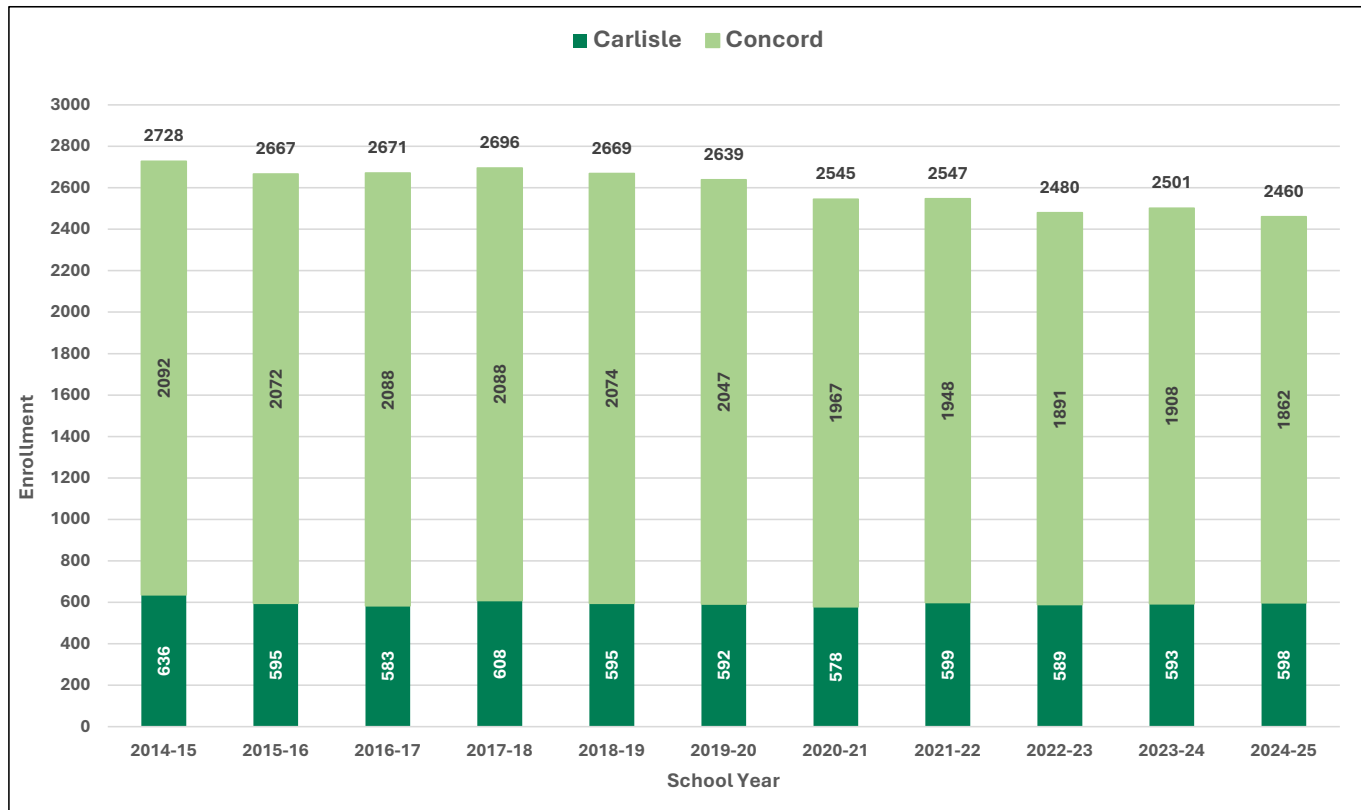
Historical Enrollment in Grade Combinations									
School Year	PK-5	K-5	PK-2	K-2	3-5	6-8	PK-8	K-8	9-12
2014-15	1835	1800	889	854	946	928	2763	2728	1255
2015-16	1806	1765	893	852	913	902	2708	2667	1288
2016-17	1782	1740	867	825	915	931	2713	2671	1275
2017-18	1785	1745	887	847	898	951	2736	2696	1272
2018-19	1761	1722	870	831	891	947	2708	2669	1274
2019-20	1745	1706	882	843	863	933	2678	2639	1281
2020-21	1695	1647	828	780	867	898	2593	2545	1312
2021-22	1727	1654	853	780	874	893	2620	2547	1312
2022-23	1697	1631	844	778	853	849	2546	2480	1303
2023-24	1732	1653	888	809	844	848	2580	2501	1221
2024-25	1682	1612	848	778	834	848	2530	2460	1113

Historical Percentage Changes			
School Year	K-12	Diff.	%
2014-15	3983		
2015-16	3955	-28	-0.7%
2016-17	3946	-9	-0.2%
2017-18	3968	22	0.6%
2018-19	3943	-25	-0.6%
2019-20	3920	-23	-0.6%
2020-21	3857	-63	-1.6%
2021-22	3859	2	0.1%
2022-23	3789	-70	-1.8%
2023-24	3730	-59	-1.6%
2024-25	3577	-153	-4.1%
Change		-406	-10.2%

Grades K-12 Historical Enrollment



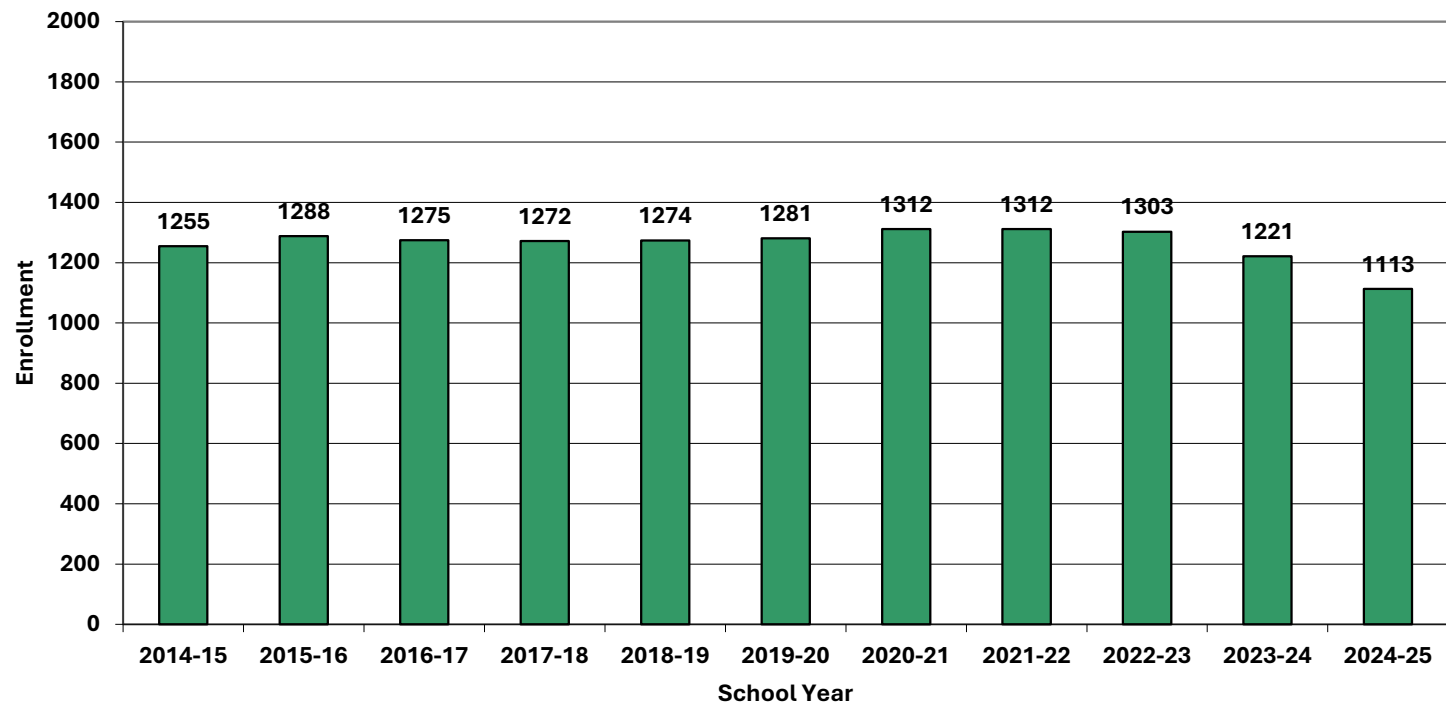
Grades K-8 Historical Enrollment By Town



Town	2014-15	2015-16	2016-17	2017-18	2018-19	2019-20	2020-21	2021-22	2022-23	2023-24	2024-25
Carlisle	23%	22%	22%	23%	22%	22%	23%	24%	24%	24%	24%
Concord	77%	78%	78%	77%	78%	78%	77%	76%	76%	76%	76%

* percentages rounded

Grades 9-12 Historical Enrollment



Projected Enrollment

School District: **Concord-Carlisle RSD, MA**

11/20/2024

Enrollment Projections By Grade*																				
Birth Year	Births*		School Year	PK	K	1	2	3	4	5	6	7	8	9	10	11	12	UNGR	K-12	PK-12
2019	146		2024-25	70	244	279	255	287	273	274	292	277	279	269	254	303	287	< 10 **	3577	3647
2020	130		2025-26	70	234	255	286	261	286	270	276	286	276	276	266	247	294	< 10 **	3517	3587
2021	173		2026-27	70	309	245	262	293	260	283	272	270	285	273	273	259	240	< 10 **	3528	3598
2022	149		2027-28	70	270	324	251	268	291	257	285	266	269	282	270	266	251	< 10 **	3554	3624
2023	155	(prov.)	2028-29	71	280	283	333	257	267	288	259	279	265	266	279	263	258	< 10 **	3581	3652
2024	151	(est.)	2029-30	71	271	293	290	340	256	264	290	253	278	262	263	272	255	< 10 **	3591	3662
2025	152	(est.)	2030-31	72	273	284	300	297	338	253	266	284	252	275	259	256	264	< 10 **	3605	3677
2026	156	(est.)	2031-32	72	280	286	291	307	295	333	255	260	283	249	272	252	248	< 10 **	3615	3687
2027	152	(est.)	2032-33	73	275	294	293	298	305	292	334	250	259	280	246	265	244	< 10 **	3639	3712
2028	153	(est.)	2033-34	73	276	288	301	300	296	301	294	326	249	256	277	240	257	< 10 **	3665	3738
2029	153	(est.)	2034-35	73	275	289	295	308	298	292	303	288	324	246	253	270	233	< 10 **	3678	3751

Note: Ungraded students (UNGR) often are high school students whose anticipated years of graduation are unknown, or students with special needs - UNGR not included in Grade Combinations for 7-12, 9-12, etc.

 Based on an estimate of births

 Based on children already born

 Based on students already enrolled

*Birth data provided by Public Health Vital Records Departments in each state.

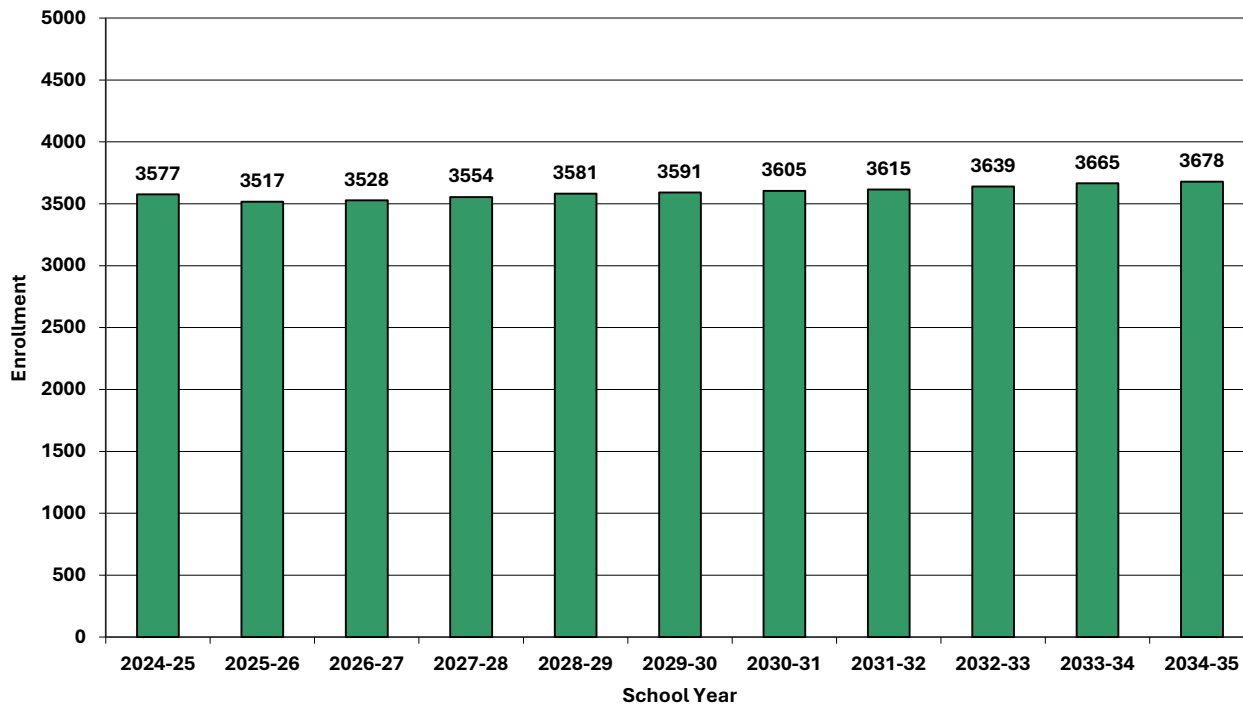
** < 10 Not reported, to protect subgroups with fewer than 10 students.

Projected Enrollment in Grade Combinations*									
School Year	PK-5	K-5	PK-2	K-2	3-5	6-8	PK-8	K-8	9-12
2024-25	1682	1612	848	778	834	848	2530	2460	1113
2025-26	1662	1592	845	775	817	838	2500	2430	1083
2026-27	1722	1652	886	816	836	827	2549	2479	1045
2027-28	1731	1661	915	845	816	820	2551	2481	1069
2028-29	1779	1708	967	896	812	803	2582	2511	1066
2029-30	1785	1714	925	854	860	821	2606	2535	1052
2030-31	1817	1745	929	857	888	802	2619	2547	1054
2031-32	1864	1792	929	857	935	798	2662	2590	1021
2032-33	1830	1757	935	862	895	843	2673	2600	1035
2033-34	1835	1762	938	865	897	869	2704	2631	1030
2034-35	1830	1757	932	859	898	915	2745	2672	1002

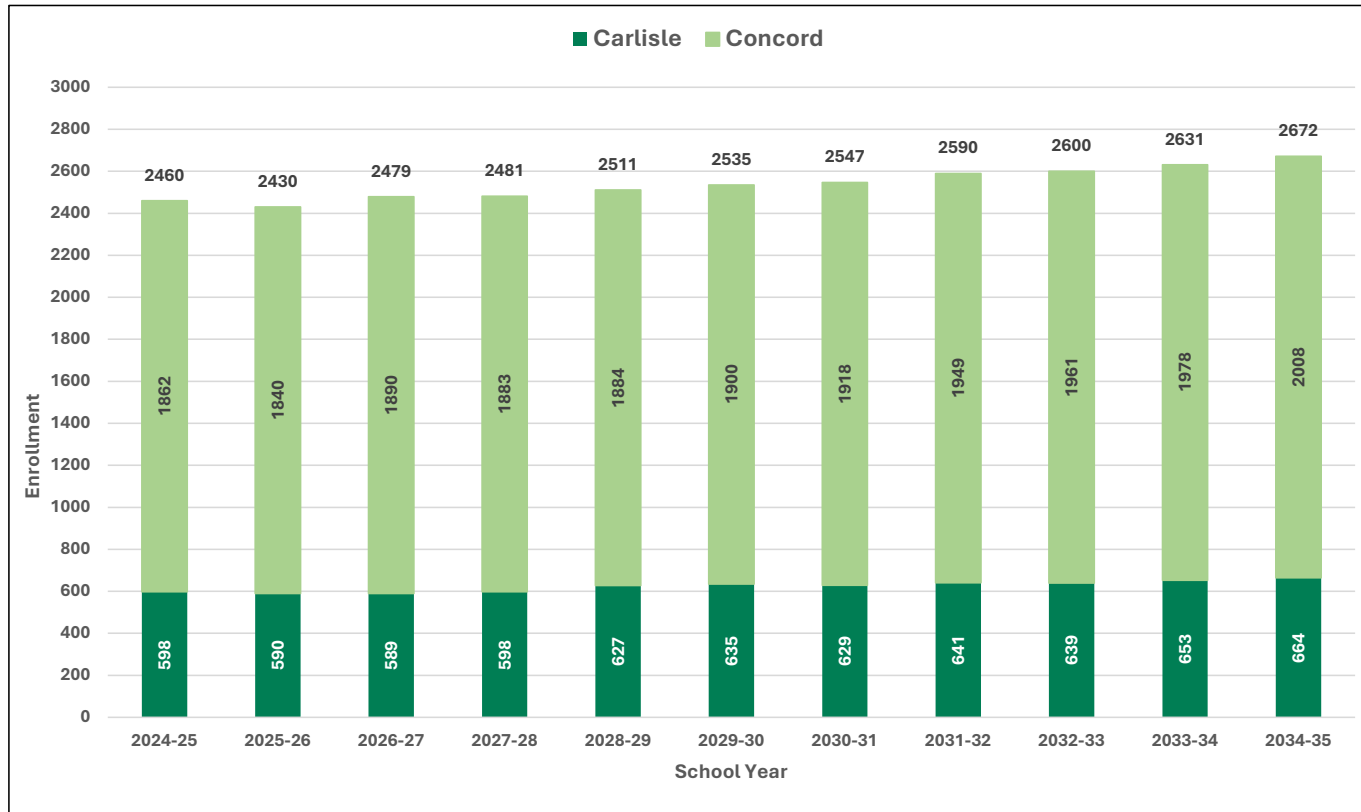
Projected Percentage Changes			
School Year	K-12	Diff.	%
2024-25	3577		
2025-26	3517	-60	-1.7%
2026-27	3528	11	0.3%
2027-28	3554	26	0.7%
2028-29	3581	27	0.8%
2029-30	3591	10	0.3%
2030-31	3605	14	0.4%
2031-32	3615	10	0.3%
2032-33	3639	24	0.7%
2033-34	3665	26	0.7%
2034-35	3678	13	0.4%
Change	101	2.8%	

*Projections should be updated annually to reflect changes in in/out-migration of families, real estate sales, residential construction, births, and similar factors.

Grades K-12 Projected Enrollment



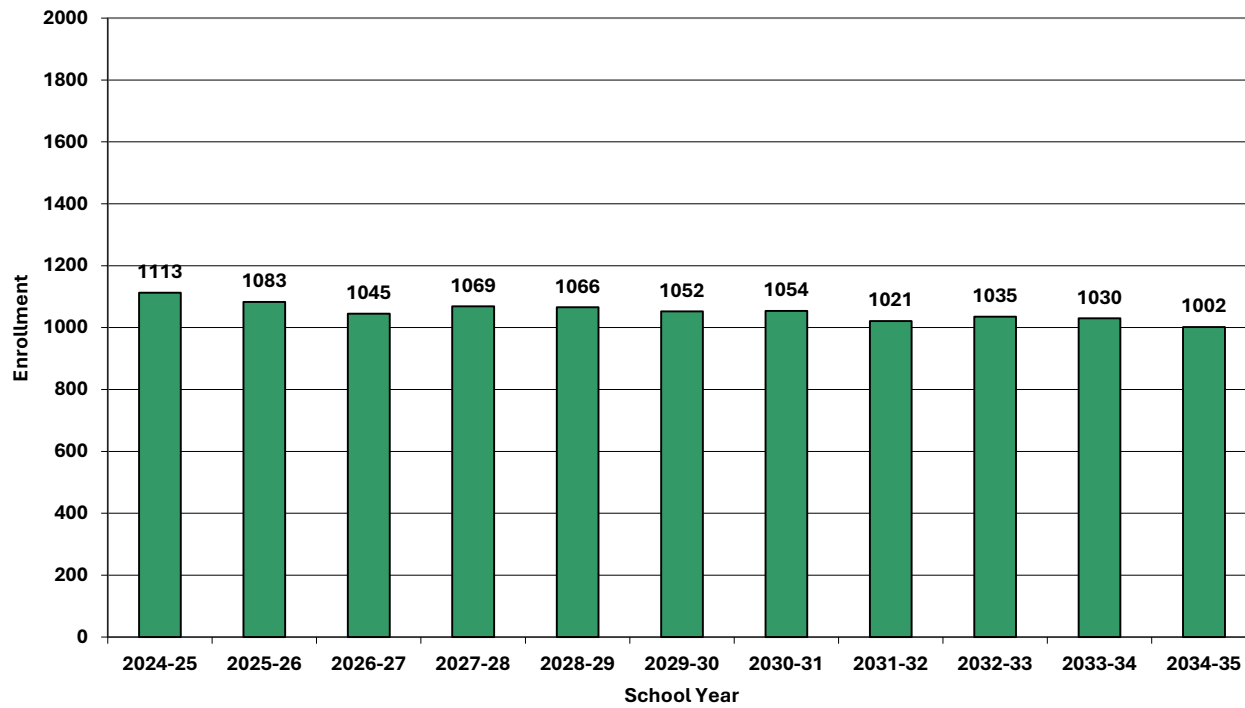
Grades K-8 Projected Enrollment By Town



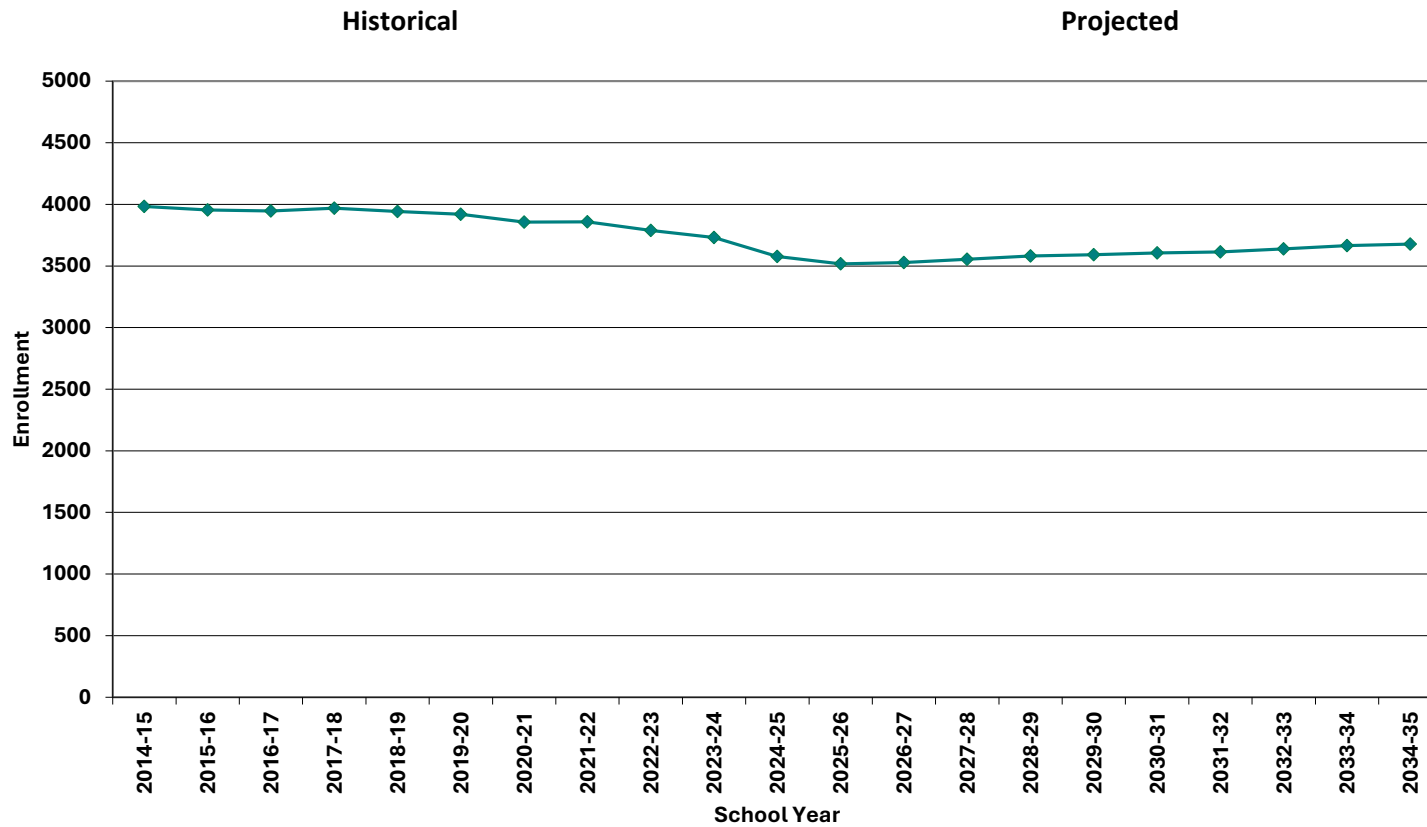
Town	2024-25	2025-26	2026-27	2027-28	2028-29	2029-30	2030-31	2031-32	2032-33	2033-34	2034-35
Carlisle	24%	24%	24%	24%	25%	25%	25%	25%	25%	25%	25%
Concord	76%	76%	76%	76%	75%	75%	75%	75%	75%	75%	75%
	100%	100%	100%	100%	100%	100%	100%	100%	100%	100%	100%

* percentages rounded

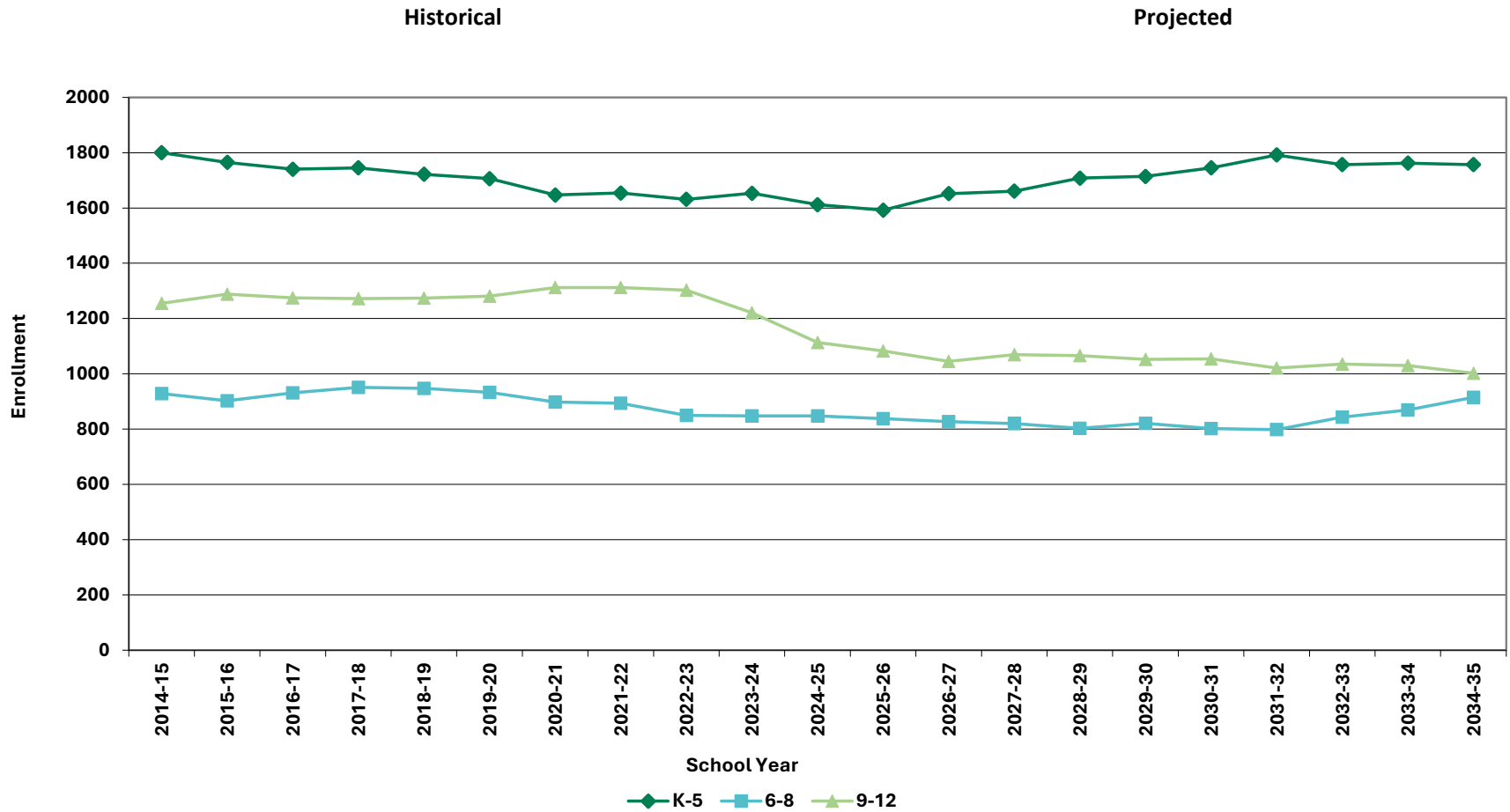
Grades 9-12 Projected Enrollment



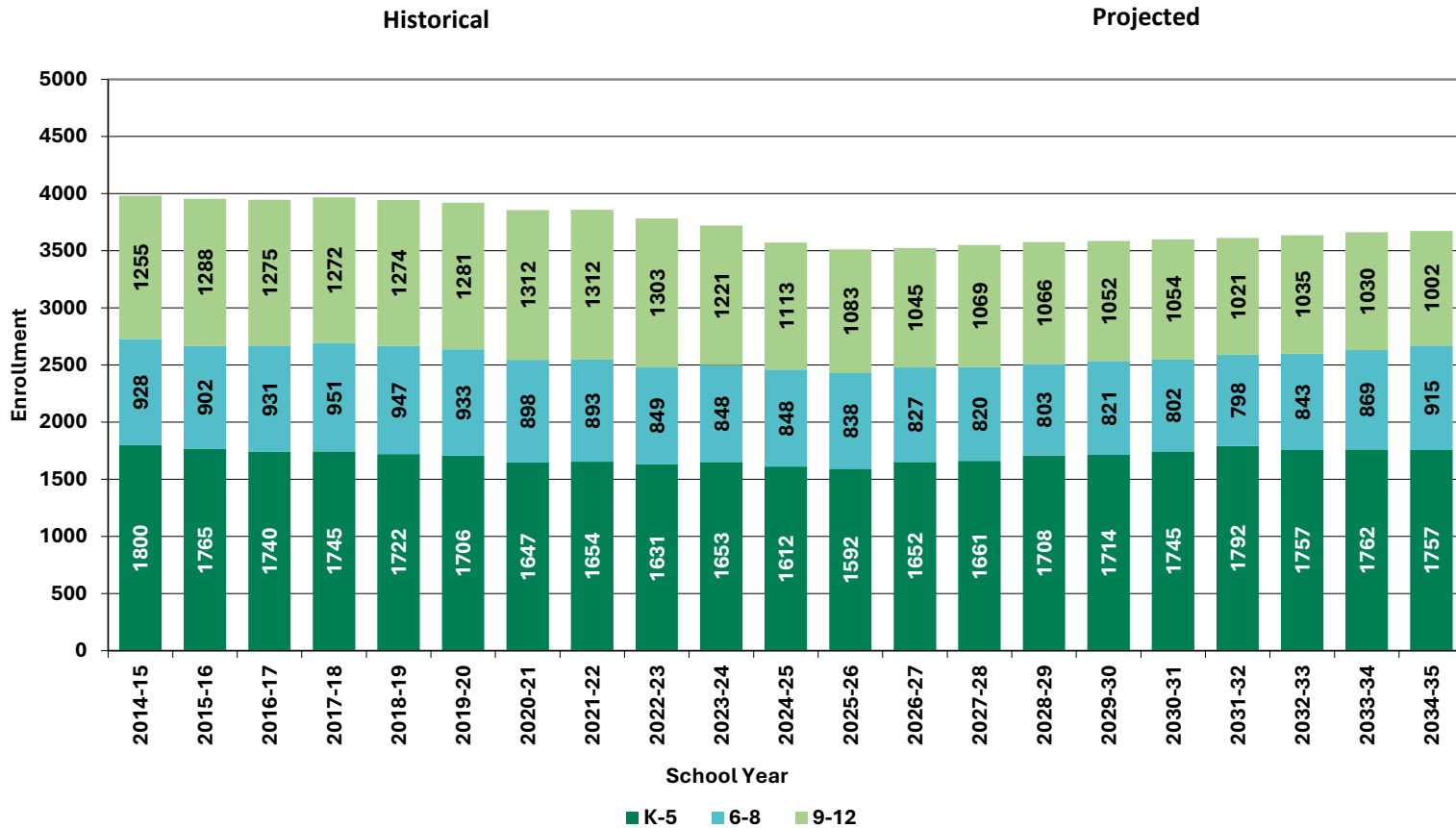
Grades K-12 Historical & Projected Enrollment



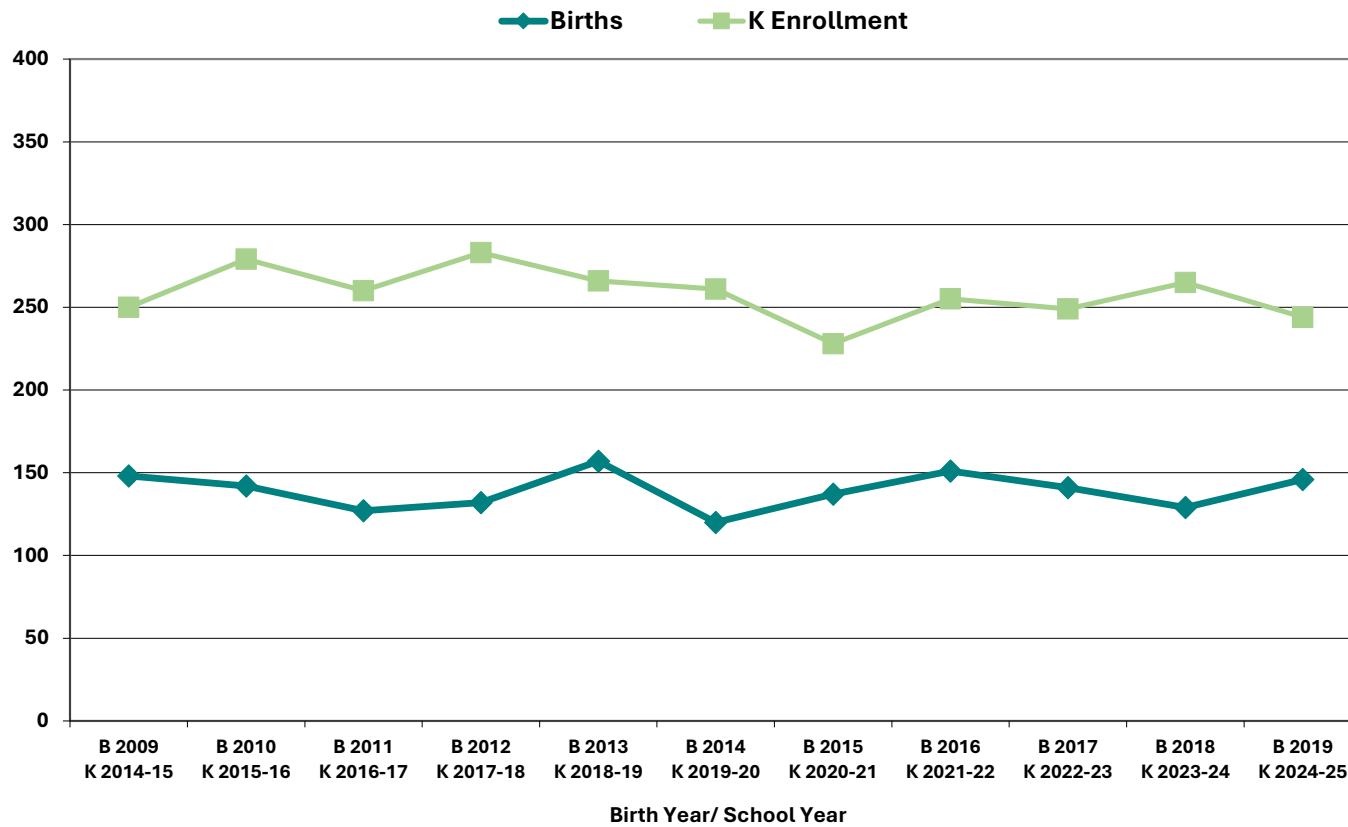
Historical & Projected Enrollments in Grade Combinations



Historical & Projected Enrollments in Grade Combinations



Birth-to-Kindergarten Relationship



Additional Information

School Year	9-12 CTE	9-12 Non-Public	9-12 Choice-In	9-12 Choice-Out	9-12 Out District SPED	9-12 Homeschool
2020-21	25	105	17	< 10 **	33	19
2021-22	n/a	212	0	< 10 **	31	16
2022-23	32	211	22	< 10 **	29	14
2023-24	42	n/a	24	< 10 **	37	< 10 **
2024-25	0	0	0	< 10 **	43	0

* Data provided by District.

"n/a" signifies that information was not provided by District.

** < 10 Not reported, to protect subgroups with fewer than 10 students.

Combined Building Permits Issued		
Year	Single-Family	Multi-Units
2020	35	0
2021	37	0
2022	32	0
2023	30	0
2024	21 to date	0 to date

*Building permit data from HUD.

New England's PK-12 Enrollments Trends

From 2022 to 2031, the US Department of Education anticipates changes in PK-12 enrollment of -1.8% in the South, -9.7% in the West, -5.0% in the Midwest, -9.1% in the Northeast, and a total of -5.5% nationwide.

State	Fall 2022 PK - 12	Fall 2031 Projected	PK-12 Decline	% Change 2022-2031
USA	49,618,464	46,889,600	-2,728,864	-5.5%
CT	513,513	465,200	-48,313	-9.4%
ME	173,853	162,900	-10,953	-6.3%
MA	923,349	857,100	-66,249	-7.2%
NH	168,909	156,600	-12,309	-7.3%
RI	137,449	127,900	-9,549	-6.9%
VT	83,654	77,300	-6,354	-7.6%

Source: U.S. Department of Education, National Center for Education Statistics, Enrollment in public elementary and secondary schools, by region, state, and jurisdiction: Selected years, fall 1990 through fall 2031, Table 203.20, Report Generated Dec. 2023, NESDEC 2.8.24

Although most New England Districts are seeing a decline in the number of births, NESDEC's experience indicates that the impact on enrollment varies from District to District. Almost half of New England Districts have been growing in PK-12 enrollment, and a similar number are declining (often in rural areas), with the other Districts remaining stable.

Projection Methodology and Reliability

PROJECTION METHODOLOGY

Cohort component (survival) technique is a frequently used method of preparing enrollment forecasts. NESDEC uses this method, but modifies it in order to move away from forecasts that are wholly computer- or formula-driven. Such modification permits the incorporation of important, current district-specific demographic information into the generation of enrollment forecasts (such as in/out-migration of students, resident births, HUD-reported building permits, etc.). Percentages are calculated from the historical enrollment data to determine a reliable percentage of increase or decrease in enrollment between any two grades. For example, if 100 students enrolled in Grade 1 in 2023-24 increased to 104 students in Grade 2 in 2024-25, the percentage of survival would be 104%, or a ratio of 1.04. Ratios are calculated between each pair of grades or years in school over several recent years.

After study and analysis of the historical ratios, and based upon a reasonable set of assumptions regarding births, migration rates, retention rates, etc., ratios most indicative of future growth patterns are determined for each pair of grades. The ratios thus selected are applied to the present enrollment statistics to project into future years. The ratios are the key factors in the reliability of the projections, assuming validity of the data at the starting point.

RELIABILITY OF ENROLLMENT PROJECTIONS

Projections can serve as useful guides to school administrators for educational planning. Enrollment projections are more reliable in Years #1-3 in the future and less reliable in the “out-years.” Projections four to ten years out may serve as a guide to future enrollments and are useful for planning purposes, but they should be viewed as subject to change given the likelihood of potential shifts in underlying assumptions/trends, such as student migration, births as they relate to Kindergarten enrollment, and other factors.

Projections that are based upon **the children who already are in the district** (the current K-12 population only) will be the most reliable. The second level of reliability will be for those children already **born into the community but not yet old enough to be in school**. The least reliable category is the group for which an estimate must be made **to predict the number of births**, thereby adding additional uncertainty. See these three multi-colored groupings on the “Projected Enrollment” tab.

Annual updates allow for early identification of recent changes in historical trends. When the actual enrollment in a grade is significantly different (higher or lower) from the projected number, it is important (yet difficult) to determine whether this is a one-year aberration or whether a new trend may have begun. **In light of this possibility, NESDEC urges all school districts to have updated enrollment forecasts developed by NESDEC each October.** This service is available at no cost to affiliated school districts.