



**Concord Public Schools  
Concord, MA**

**School Year 2024-25 Enrollment Projection Report**

*Copyright, New England School Development Council, 2024*

# Table of Contents

Section	Page
Enrollment Summary.....	1
Historical Enrollment Table.....	2
Historical Enrollment Graph.....	3
Projected Enrollment Table.....	4
Projected Enrollment Graph.....	5
Historical & Projected Enrollment Graph.....	6
Historical & Projected Enrollment in Grade Combinations Line Graph.....	7
Historical & Projected Enrollment in Grade Combinations Stacked Column Graph.....	8
Birth to Kindergarten Relationship Graph.....	9
Additional Information .....	10
New England's PK-12 Enrollment Trends.....	11
Projection Methodology and Reliability .....	12

# Concord, MA Enrollment Summary

NESDEC is pleased to send you this report displaying the past, present, and projected enrollments for your District. It is important to update enrollment projections every year to identify changes in enrollment patterns. Ten-year projections are designed to provide your District with yearly, up-to-date enrollment information that can be used by boards and administrators for effective planning and allocation of resources. We received the enrollment data from the District, and we assume that the method of collecting this data has been consistent from year to year.

Birth data informs Kindergarten enrollment. Each fall, NESDEC secures birth data from State sources, providing a snapshot in time as to actual and provisional births as reported by the State, and then uses this birth data to predict Kindergarten enrollments. We only use Fall birth data to assure consistency in reporting from year to year. Estimated births, which are an average of the previous five years of birth data, are based on this same snapshot. NESDEC acknowledges the variability of the provisional and the estimated birth data, and notes that the projected Kindergarten enrollments may serve as a guide to future planning.

Enrollment projections are more reliable in Years #1-3 in the future. Projections four to ten years out may serve as a guide to future enrollments and are useful for planning purposes. In light of this, NESDEC has added a “Spring Update Refresher” enrollment projection at no cost to affiliates. For more information, please refer to the Projection Methodology and Reliability section of this document.

The NESDEC enrollment projection fell within 41 students of the K-8 total, 1,903 students projected vs. 1,862 enrolled. One variance of 23 students occurred at Kindergarten, 209 projected vs. 186 enrolled. Ratios have been adjusted.

Births increased by 8 from a previous ten-year average of 110 to a projected average of 118. In most districts, Grades 1-8 are very stable in enrollments. However, there have been increases in 5 of the 8 most recent years, leading to a net increase averaging 2 students per year.

Over the next three years, Grades K-2 enrollments are projected to increase by 70 students, Grades 3-5 enrollments are projected to decrease by 23 students, and Grades 6-8 enrollments are projected to decrease by 26 students, as students move through the grades.

# Historical Enrollment

School District: **Concord, MA**

**11/20/2024**

Historical Enrollment By Grade																			
Birth Year	Births*	School Year	PK	K	1	2	3	4	5	6	7	8	9	10	11	12	UNGR	K-8	PK-8
2009	126	2014-15	22	198	234	241	241	250	237	240	210	241	0	0	0	0	0	2092	2114
2010	109	2015-16	28	225	207	240	237	238	246	239	232	208	0	0	0	0	0	2072	2100
2011	101	2016-17	28	209	237	216	245	234	232	239	249	227	0	0	0	0	0	2088	2116
2012	106	2017-18	25	220	205	241	223	233	242	229	248	247	0	0	0	0	0	2088	2113
2013	128	2018-19	25	208	234	207	242	213	234	246	235	255	0	0	0	0	0	2074	2099
2014	100	2019-20	25	209	218	237	213	238	215	241	239	237	0	0	0	0	0	2047	2072
2015	107	2020-21	39	175	218	219	229	209	233	216	230	238	0	0	0	0	0	1967	2006
2016	119	2021-22	58	182	193	220	232	227	206	235	217	236	0	0	0	0	0	1948	2006
2017	111	2022-23	54	186	191	201	217	225	220	214	226	211	0	0	0	0	0	1891	1945
2018	89	2023-24	64	196	197	205	212	221	223	218	207	229	0	0	0	0	0	1908	1972
2019	116	2024-25	56	186	204	195	208	210	216	219	218	206	0	0	0	0	0	1862	1918

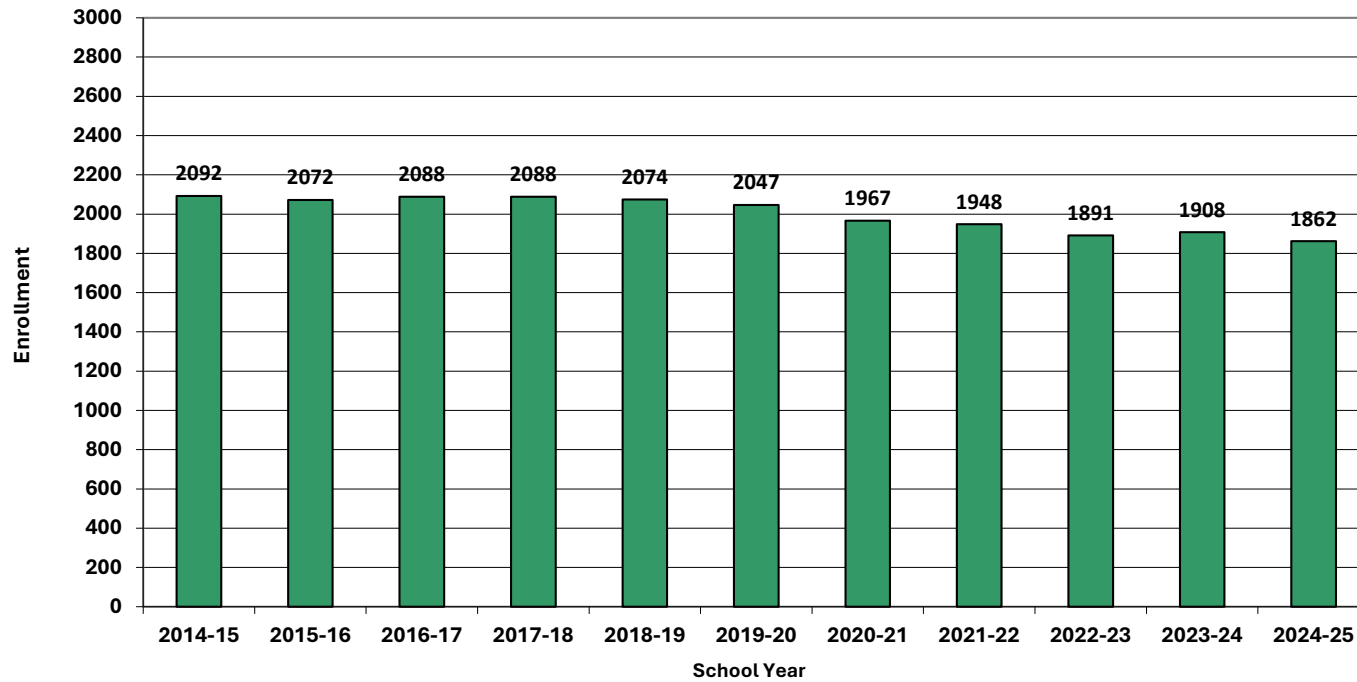
\*Birth data provided by Public Health Vital Records Departments in each state.

\*\* < 10 Not reported, to protect subgroups with fewer than 10 students.

Historical Enrollment in Grade Combinations									
School Year	PK-5	K-5	PK-2	K-2	3-5	6-8	PK-8	K-8	
2014-15	1423	1401	695	673	728	691	2114	2092	
2015-16	1421	1393	700	672	721	679	2100	2072	
2016-17	1401	1373	690	662	711	715	2116	2088	
2017-18	1389	1364	691	666	698	724	2113	2088	
2018-19	1363	1338	674	649	689	736	2099	2074	
2019-20	1355	1330	689	664	666	717	2072	2047	
2020-21	1322	1283	651	612	671	684	2006	1967	
2021-22	1318	1260	653	595	665	688	2006	1948	
2022-23	1294	1240	632	578	662	651	1945	1891	
2023-24	1318	1254	662	598	656	654	1972	1908	
2024-25	1275	1219	641	585	634	643	1918	1862	

Historical Percentage Changes			
School Year	K-8	Diff.	%
2014-15	2092		
2015-16	2072	-20	-1.0%
2016-17	2088	16	0.8%
2017-18	2088	0	0.0%
2018-19	2074	-14	-0.7%
2019-20	2047	-27	-1.3%
2020-21	1967	-80	-3.9%
2021-22	1948	-19	-1.0%
2022-23	1891	-57	-2.9%
2023-24	1908	17	0.9%
2024-25	1862	-46	-2.4%
<b>Change</b>		<b>-230</b>	<b>-11.0%</b>

# Grades K-8 Historical Enrollment



# Projected Enrollment

School District: **Concord, MA**

11/20/2024

Enrollment Projections By Grade*																					
Birth Year	Births*		School Year	PK	K	1	2	3	4	5	6	7	8	9	10	11	12	UNGR	K-8	PK-8	
2019	116		2024-25	56	186	204	195	208	210	216	219	218	206	0	0	0	0	0	0	1862	1918
2020	100		2025-26	56	175	195	210	199	207	206	217	214	217	0	0	0	0	0	0	1840	1896
2021	147		2026-27	56	258	184	201	214	198	203	207	212	213	0	0	0	0	0	0	1890	1946
2022	111		2027-28	56	195	271	189	205	212	194	204	202	211	0	0	0	0	0	0	1883	1939
2023	114	(prov.)	2028-29	57	200	205	279	193	204	208	195	199	201	0	0	0	0	0	0	1884	1941
2024	118	(est.)	2029-30	57	206	210	211	284	192	200	209	190	198	0	0	0	0	0	0	1900	1957
2025	118	(est.)	2030-31	57	207	216	216	215	282	188	201	204	189	0	0	0	0	0	0	1918	1975
2026	122	(est.)	2031-32	57	213	217	222	220	213	276	189	196	203	0	0	0	0	0	0	1949	2006
2027	116	(est.)	2032-33	58	204	224	223	226	218	209	277	185	195	0	0	0	0	0	0	1961	2019
2028	117	(est.)	2033-34	58	206	214	230	227	224	213	210	270	184	0	0	0	0	0	0	1978	2036
2029	118	(est.)	2034-35	58	207	216	220	234	225	219	214	205	268	0	0	0	0	0	0	2008	2066

Note: Ungraded students (UNGR) often are high school students whose anticipated years of graduation are unknown, or students with special needs - UNGR not included in Grade Combinations for 7-12, 9-12, etc.

Based on an estimate of births

Based on children already born

Based on students already enrolled

\*Birth data provided by Public Health Vital Records Departments in each state.

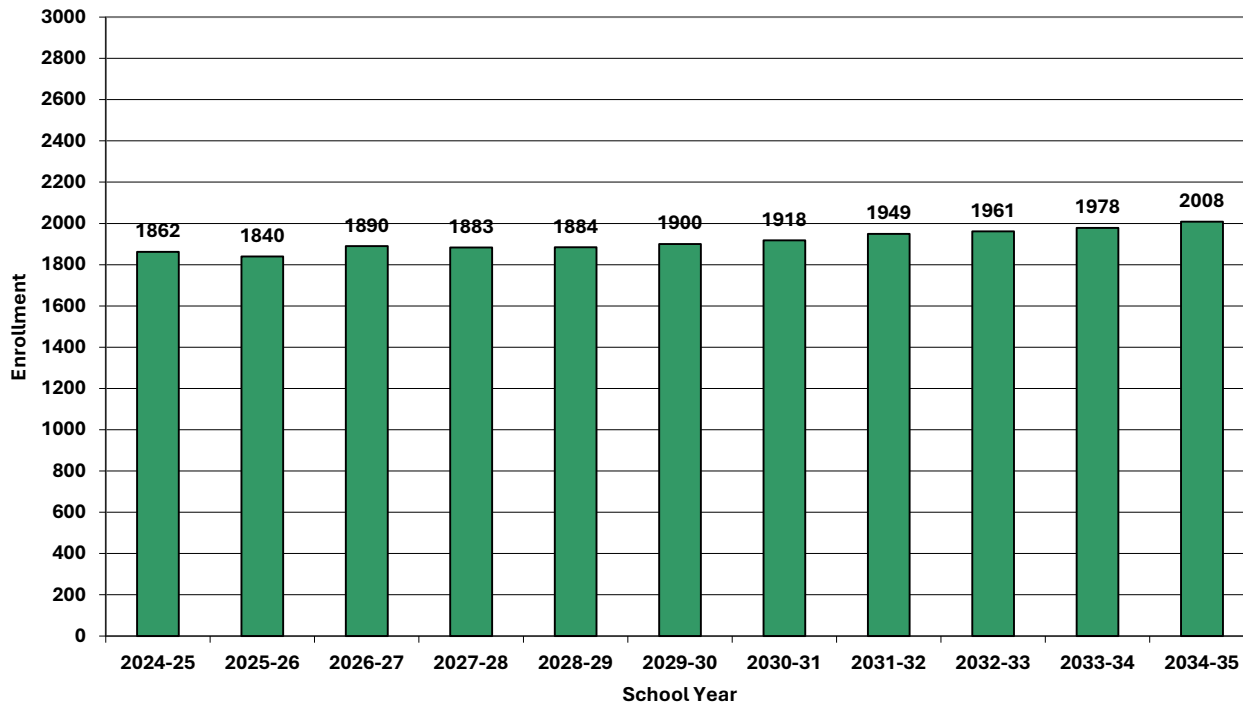
\*\* < 10 Not reported, to protect subgroups with fewer than 10 students.

Projected Enrollment in Grade Combinations*									
School Year	PK-5	K-5	PK-2	K-2	3-5	6-8	PK-8	K-8	
2024-25	1275	1219	641	585	634	643	1918	1862	
2025-26	1248	1192	636	580	612	648	1896	1840	
2026-27	1314	1258	699	643	615	632	1946	1890	
2027-28	1322	1266	711	655	611	617	1939	1883	
2028-29	1346	1289	741	684	605	595	1941	1884	
2029-30	1360	1303	684	627	676	597	1957	1900	
2030-31	1381	1324	696	639	685	594	1975	1918	
2031-32	1418	1361	709	652	709	588	2006	1949	
2032-33	1362	1304	709	651	653	657	2019	1961	
2033-34	1372	1314	708	650	664	664	2036	1978	
2034-35	1379	1321	701	643	678	687	2066	2008	

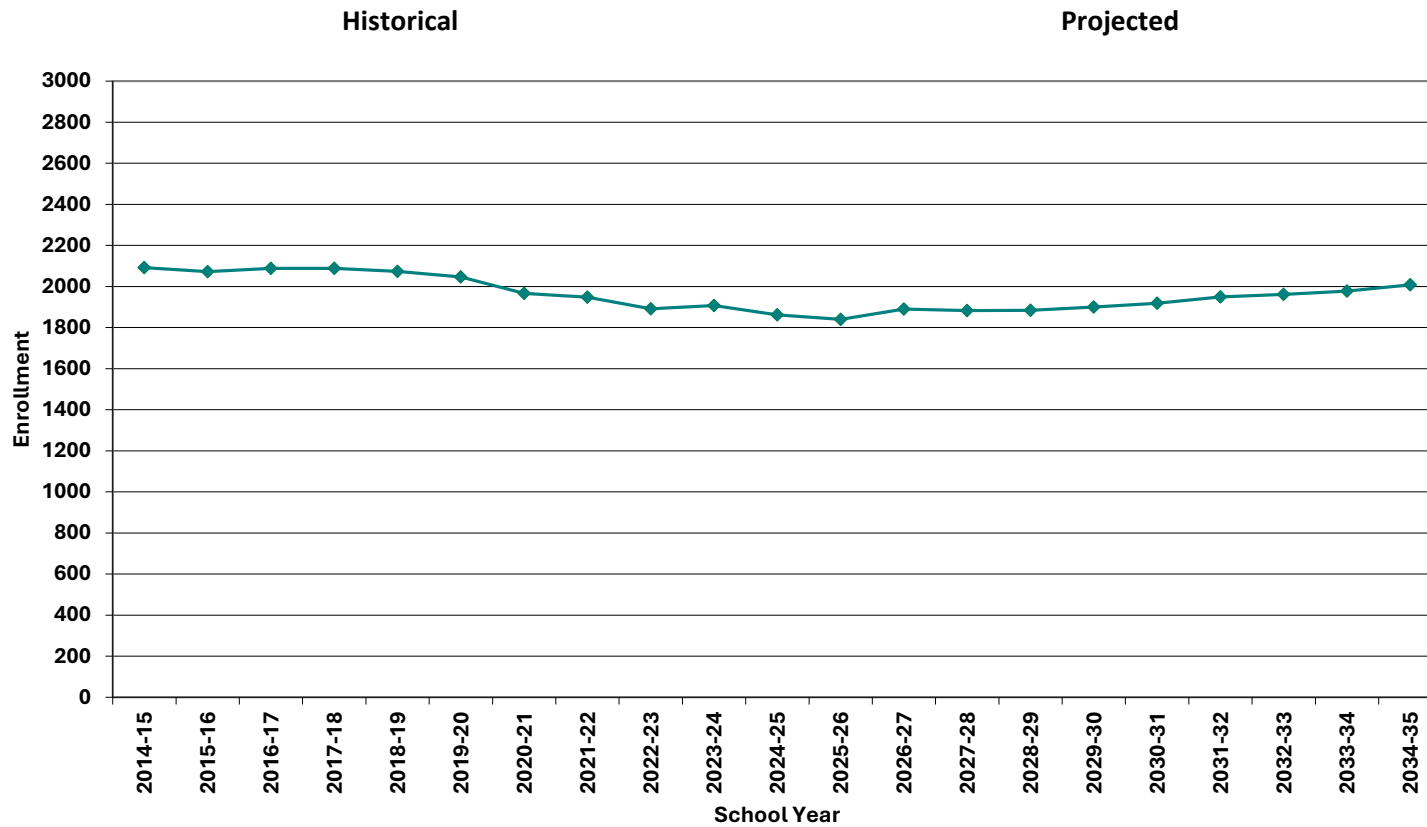
Projected Percentage Changes			
School Year	K-8	Diff.	%
2024-25	1862		
2025-26	1840	-22	-1.2%
2026-27	1890	50	2.7%
2027-28	1883	-7	-0.4%
2028-29	1884	1	0.1%
2029-30	1900	16	0.8%
2030-31	1918	18	0.9%
2031-32	1949	31	1.6%
2032-33	1961	12	0.6%
2033-34	1978	17	0.9%
2034-35	2008	30	1.5%
<b>Change</b>		<b>146</b>	<b>7.8%</b>

\*Projections should be updated annually to reflect changes in in/out-migration of families, real estate sales, residential construction, births, and similar factors.

# Grades K-8 Projected Enrollment



# Grades K-12 Historical & Projected Enrollment

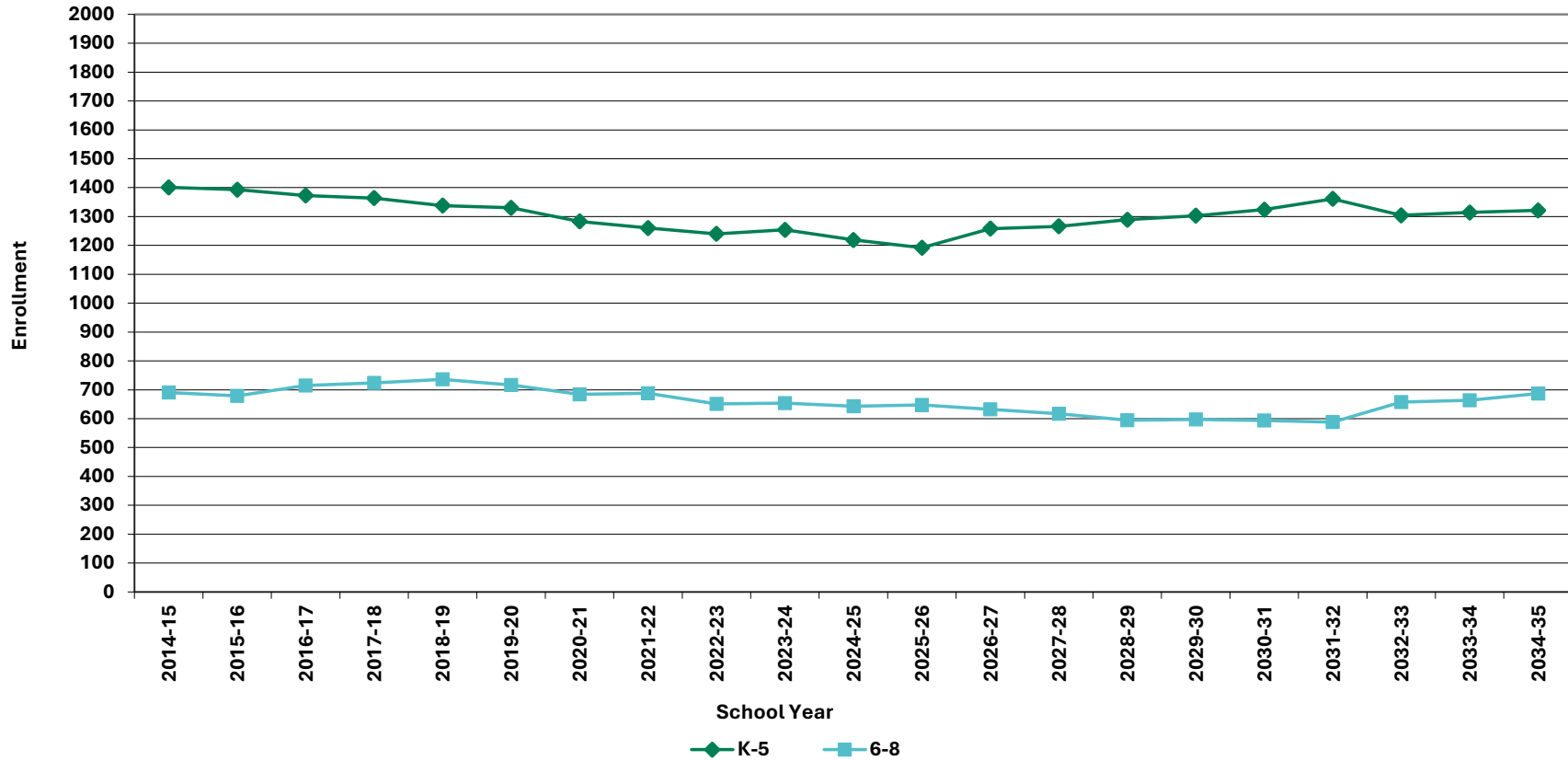




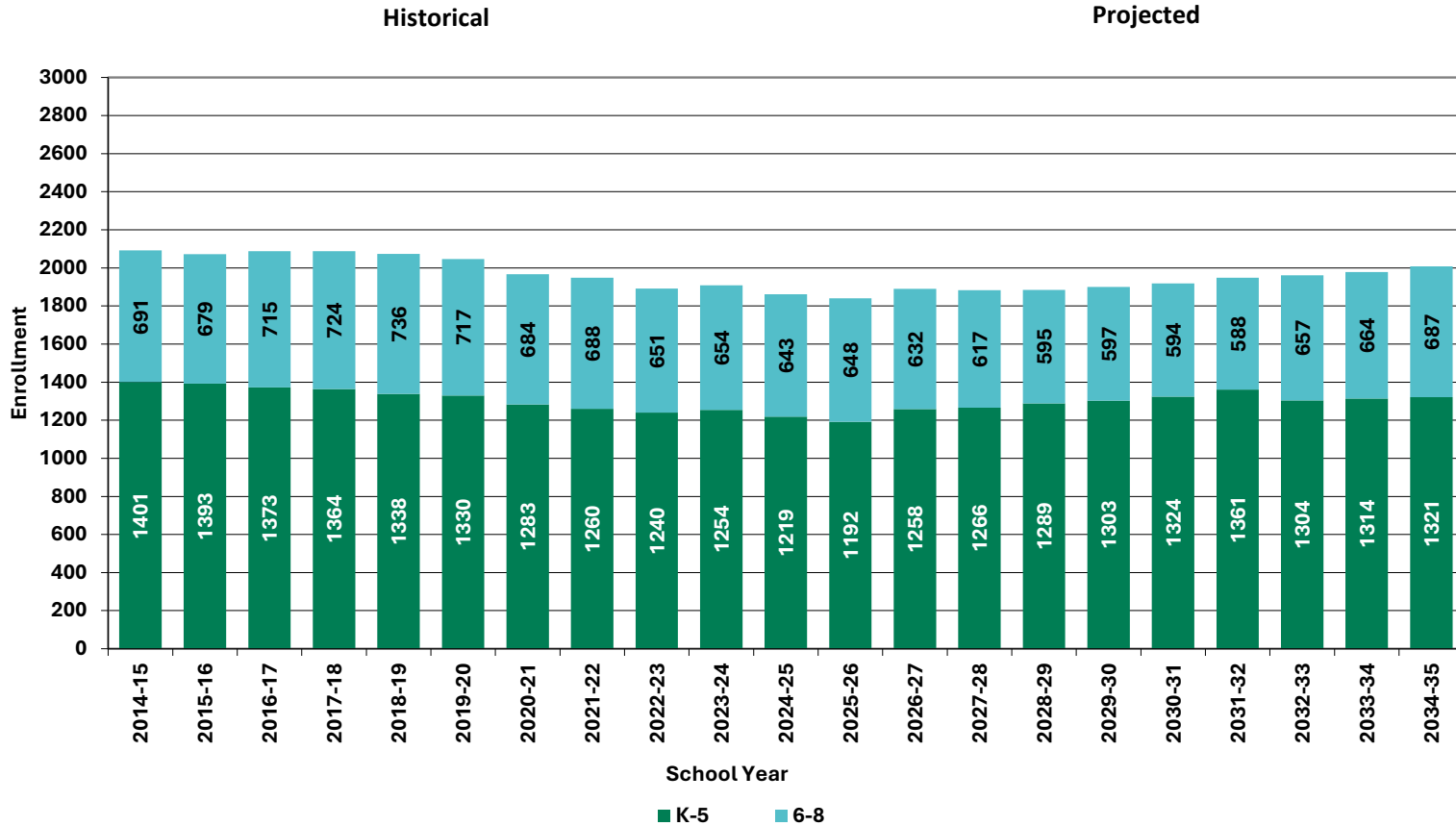
# Historical & Projected Enrollments in Grade Combinations

Historical

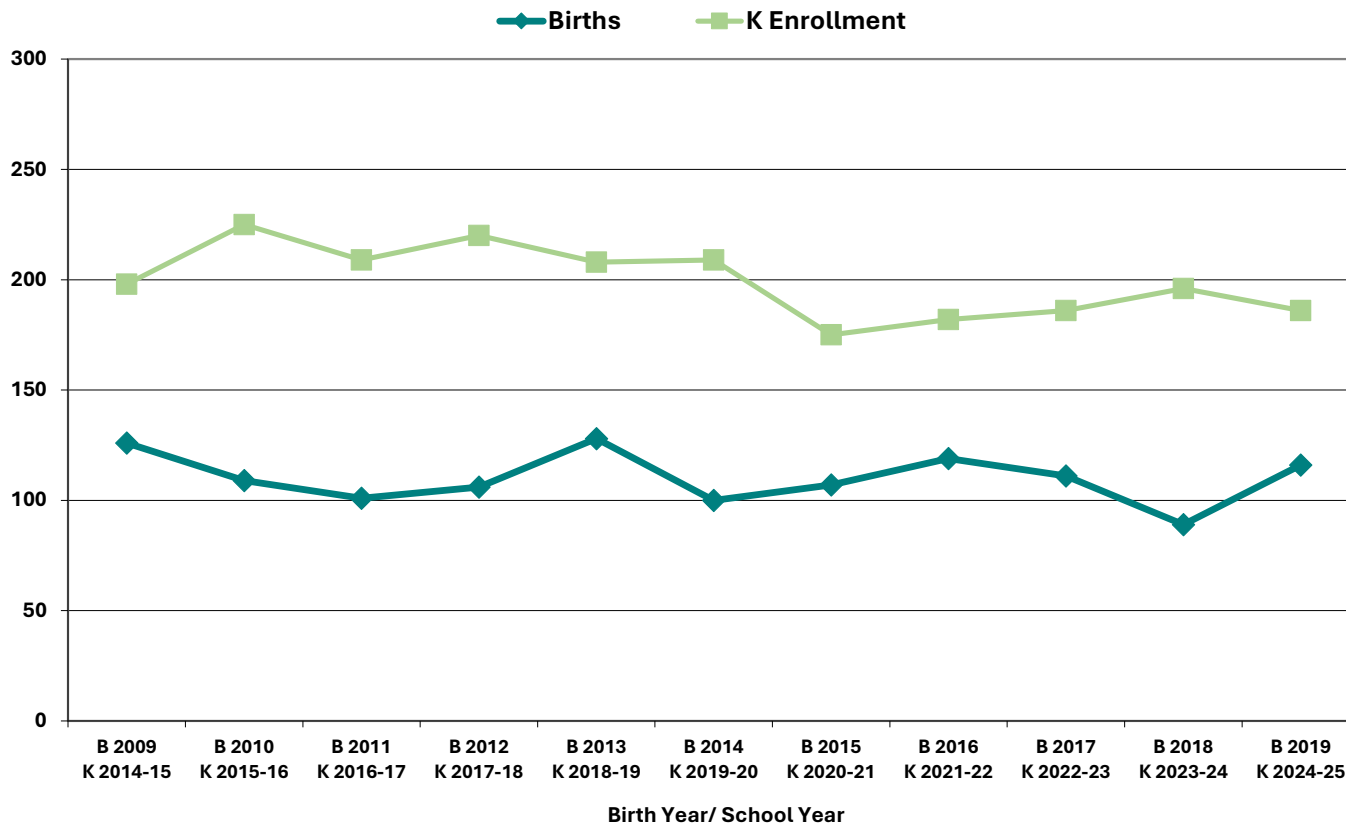
Projected



# Historical & Projected Enrollments in Grade Combinations



# Birth-to-Kindergarten Relationship



## Additional Information

School Year	9-12 CTE	K-12 Non-Public	K-12 Choice-In	K-12 Choice-Out	K-12 Out District SPED	K-12 Homeschool
2020-21	0	194	0	< 10 **	24	16
2021-22	0	170	0	< 10 **	23	45
2022-23	0	233	27	< 10 **	18	31
2023-24	0	n/a	29	n/a	15	19
2024-25	0	0	0	< 10 **	14	0

\* Data provided by District.

"n/a" signifies that information was not provided by District.

\*\* < 10 Not reported, to protect subgroups with fewer than 10 students.

Building Permits Issued		
Year	Single-Family	Multi-Units
2020	27	0
2021	35	0
2022	28	0
2023	22	0
2024	19 to date	0 to date

\*Building permit data from HUD.

## New England's PK-12 Enrollments Trends

From 2022 to 2031, the US Department of Education anticipates changes in PK-12 enrollment of -1.8% in the South, -9.7% in the West, -5.0% in the Midwest, -9.1% in the Northeast, and a total of -5.5% nationwide.

State	Fall 2022 PK - 12	Fall 2031 Projected	PK-12 Decline	% Change 2022-2031
USA	49,618,464	46,889,600	-2,728,864	-5.5%
CT	513,513	465,200	-48,313	-9.4%
ME	173,853	162,900	-10,953	-6.3%
MA	923,349	857,100	-66,249	-7.2%
NH	168,909	156,600	-12,309	-7.3%
RI	137,449	127,900	-9,549	-6.9%
VT	83,654	77,300	-6,354	-7.6%

**Source:** U.S. Department of Education, National Center for Education Statistics, Enrollment in public elementary and secondary schools, by region, state, and jurisdiction: Selected years, fall 1990 through fall 2031, Table 203.20, Report Generated Dec. 2023, NESDEC 2.8.24

Although most New England Districts are seeing a decline in the number of births, NESDEC's experience indicates that the impact on enrollment varies from District to District. Almost half of New England Districts have been growing in PK-12 enrollment, and a similar number are declining (often in rural areas), with the other Districts remaining stable.

# Projection Methodology and Reliability

## PROJECTION METHODOLOGY

Cohort component (survival) technique is a frequently used method of preparing enrollment forecasts. NESDEC uses this method, but modifies it in order to move away from forecasts that are wholly computer- or formula-driven. Such modification permits the incorporation of important, current district-specific demographic information into the generation of enrollment forecasts (such as in/out-migration of students, resident births, HUD-reported building permits, etc.). Percentages are calculated from the historical enrollment data to determine a reliable percentage of increase or decrease in enrollment between any two grades. For example, if 100 students enrolled in Grade 1 in 2023-24 increased to 104 students in Grade 2 in 2024-25, the percentage of survival would be 104%, or a ratio of 1.04. Ratios are calculated between each pair of grades or years in school over several recent years.

After study and analysis of the historical ratios, and based upon a reasonable set of assumptions regarding births, migration rates, retention rates, etc., ratios most indicative of future growth patterns are determined for each pair of grades. The ratios thus selected are applied to the present enrollment statistics to project into future years. The ratios are the key factors in the reliability of the projections, assuming validity of the data at the starting point.

## RELIABILITY OF ENROLLMENT PROJECTIONS

Projections can serve as useful guides to school administrators for educational planning. Enrollment projections are more reliable in Years #1-3 in the future and less reliable in the “out-years.” Projections four to ten years out may serve as a guide to future enrollments and are useful for planning purposes, but they should be viewed as subject to change given the likelihood of potential shifts in underlying assumptions/trends, such as student migration, births as they relate to Kindergarten enrollment, and other factors.

Projections that are based upon **the children who already are in the district** (the current K-12 population only) will be the most reliable. The second level of reliability will be for those children already **born into the community but not yet old enough to be in school**. The least reliable category is the group for which an estimate must be made **to predict the number of births**, thereby adding additional uncertainty. See these three multi-colored groupings on the “Projected Enrollment” tab.

Annual updates allow for early identification of recent changes in historical trends. When the actual enrollment in a grade is significantly different (higher or lower) from the projected number, it is important (yet difficult) to determine whether this is a one-year aberration or whether a new trend may have begun. **In light of this possibility, NESDEC urges all school districts to have updated enrollment forecasts developed by NESDEC each October.** This service is available at no cost to affiliated school districts.