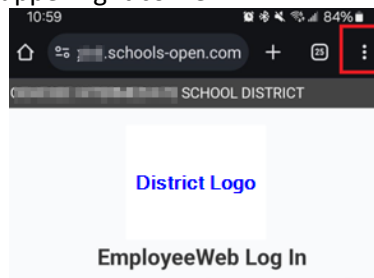


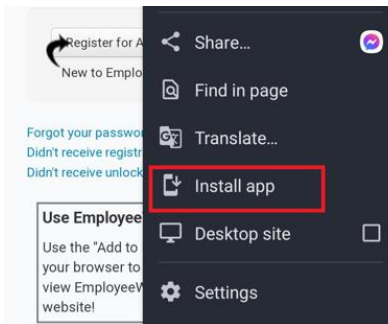


## ANDROID:

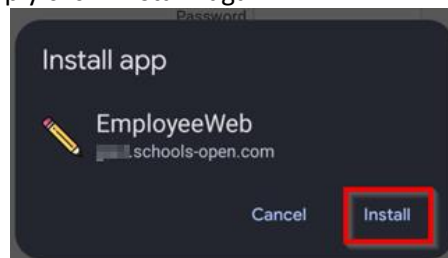
- Open your Chrome/FireFox browser and go to your district's EmployeeWeb URL.
  - The URL is [https://gisdcarm.schools-open.com/employee\\_web/login](https://gisdcarm.schools-open.com/employee_web/login) where what appears to be a space between employee and web is an underscore \_
  - If you have not updated your operating system or browser you may have to use FireFox.
- Select the three vertical dots in the upper right corner.



- Select "Install App" or "Add to Home" on older versions.



- Another window will appear, simply click "Install" again.



- This will create an "app" icon on your mobile device main screen. Simply click on the "eWeb App" icon on your mobile device whenever you wish to login to EmployeeWeb.
  - Note, this will be helpful when submitting a Time Off Request.
  - You will use the same username/password that you have always used to access EmployeeWeb.

