

Education Committee

March 6, 2025



Agenda

Introductions

Purpose

Old Business Updates

IL Literacy Plan

Postsecondary & Career Explorations

New Business

Handbook Suggested Changes

Advanced Placement Procedures Update/Suggestions

Panorama-Survey Tool & SEL Data



Purpose of Education Committee

- Reviews recommended changes in curriculum as well as student handbooks.
- Provides information and recommendations to the Board of Education.
- Functions as the required Parent-Teacher Advisory Committee, which will assist in the development of student discipline policy and procedure. The Education Committee functions in the role of the Parent-Teacher Advisory Committee.
- Board Policy 2:150 - Committees:
Parent-Teacher Advisory Committee. This committee assists in the development of student behavior policy and procedure, provides information and recommendations to the Board. Its members are parents/guardians, and teachers, and may include persons whose expertise or experience is needed. The committee reviews such issues as administering medication in the schools, reciprocal reporting between the school district and local law enforcement agencies regarding criminal offenses committed by students, student discipline, disruptive classroom behavior, school bus safety procedures, and the dissemination of student conduct information.

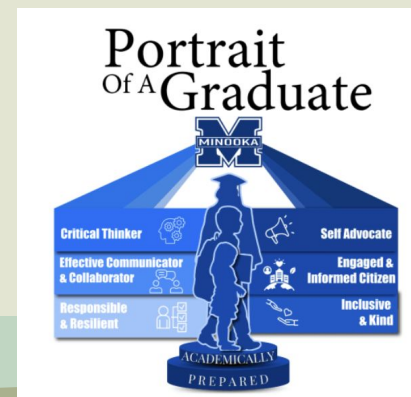


Agenda & Alignment

Minooka 201 Strategic Plan: Goal 1 (Student Growth and Achievement), Goal 2 (Learning Environment), Goal 3 (Working Environment), Goal 4 (Family and Community Engagement)

Portrait of a Graduate: Effective Communicator and Collaborator, Engaged and Informed Citizen, Academically Prepared

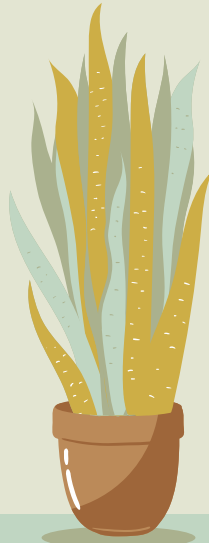
Vision 2030: Future Focused Learning



Old Business

IL Literacy Plan

- Finalizing Data from Parents
- Reviewing Literacy Benchmarks
- Reviewing Multi-Tiered System of Supports
- Attending/Planning Professional Development
- Gathering Data from Current Curriculum
- Create Roadmap to Improve Student Outcomes





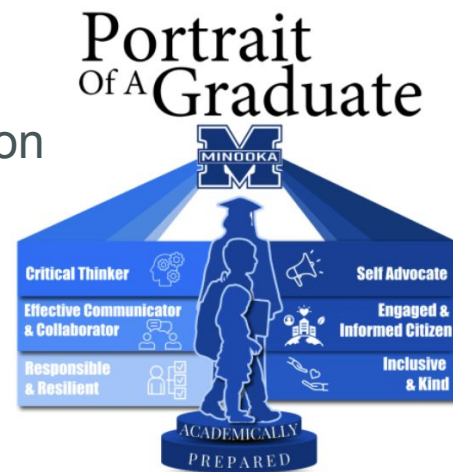
Old Business

Postsecondary and Career Explorations

MJHS & MIS

Utilizing a Fine Arts Rotation and Advisory/SH

- Career Exploration and Development
- Postsecondary Exploration, Prep, & Selection
- Financial Aid and Literacy





Illinois PaCE Postsecondary and Career Expectations

At the middle school and early high school level, the Illinois Postsecondary and Career Expectations (PaCE) Framework is designed to provide students with guided exploration of postsecondary planning and options in a manner that is consistent with adolescent development. Meaningful participation in post-secondary preparation programs requires that students perceive college and/or career as possible and probable. Too often, programs are designed to serve only students who already have a college-going or career-oriented identity. The developmental work in the middle school framework is intended to prepare students to more fully engage with the PaCE Framework throughout the critical high school years.



By the end of 6th grade

A student should be exposed to:

- information about and examples of a wide range of careers
- language that emphasizes individual skills, strengths, and assets
- practices that develop a growth mindset

A student should be supported to:

- explore their interests
- practice their strengths
- develop their confidence in their abilities

By the end of 7th grade

A student should be supported to:

- engage in guided self-reflection
- articulate aspirations
- envision a positive future
- explore their habits
- create or change a habit
- record their progress
- explore career interests
- explore their strengths
- effectively ask for help
- understand a growth mind set

By the end of 8th grade

A student should be supported to:

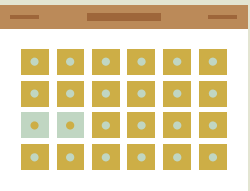
- explore barriers to aspirations
- articulate personal strengths
- identify sources of motivation
- explore career interests
- develop an educational plan for at least one career interest
- compare possible financial futures
- complete a career cluster survey
- attend a career exploration day
- demonstrate a growth mind set
- explore learning styles
- map a support network
- complete a unit on education planning

A student should be exposed to:

- the concept of career clusters of interest
- relationship between community service/extracurricular activities and postsecondary (PS)/career goals
- be exposed to a financial literacy unit in a course or workshop



New Business



The background of the slide is a stylized illustration of a room. On the left, there is a dark blue bookshelf filled with books of various colors (yellow, orange, green, white). On top of the shelf is a small globe on a stand. In the center, a long, thin, light green rectangular light fixture hangs from the ceiling. On the right, another dark blue bookshelf is partially visible, also containing books. The floor is a light green color, and the walls are a pale yellowish-green.

Handbook

Suggested Changes

- **Smartwatches-consistent language**
- **GPA Information**
- **Outside food/drink**

Working Document

A small illustration of a book lying flat on the floor, with its pages visible. The book is dark blue with a white spine and pages.



Accelerated Placement Procedures

Early Entrance Into Kindergarten

2024-2025	2025-2026
MAP K-2 READING >85%tile National Norm MAP K-2 MATH >85%tile National Norm Social Emotional Readiness	MAP K-2 READING >65%tile National Norm MAP K-2 MATH >65%tile National Norm Social Emotional Readiness

Early Entrance Checklist

Panorama

- Survey data for more specific and frequent results
- Voice from staff, parent and student
- Incorporate SEL Data
- Overview
- Student Survey Information
- Teacher and Staff Survey Information
- Family-School Relationships Survey Information





THANK YOU for your time and dedication!

Final Thoughts and Feedback?