



# Fairfield Public Schools

## 10-Year Enrollment Projection Update

January 2025



# Contents

- Enrollment Drivers
- Enrollment Trends Analysis
- Enrollment Projections
- Appendix A: High and Low Districtwide Projections
- Appendix B: Individual School Projections (Medium Model)



# Introduction

This enrollment projection report examines factors that influence school enrollments, namely trends in demographics, births, housing, and enrollment. These trends provide a framework for the districtwide and school-by-school enrollment projections.

MP Planning Group has analyzed demographic; housing; and economic trends, characteristics, and forecasts along with birth data and historic enrollment trends to create enrollment projections for Fairfield Public Schools

The Office of Grants Administration, OGA, (Formerly OSCG&R) requires a minimum of 8-year enrollment projections as a critical factor for determining reimbursement eligibility and project size for school construction projects. Projections must be both districtwide and school based. This 10-year enrollment projection report is intended to fulfill those requirements.



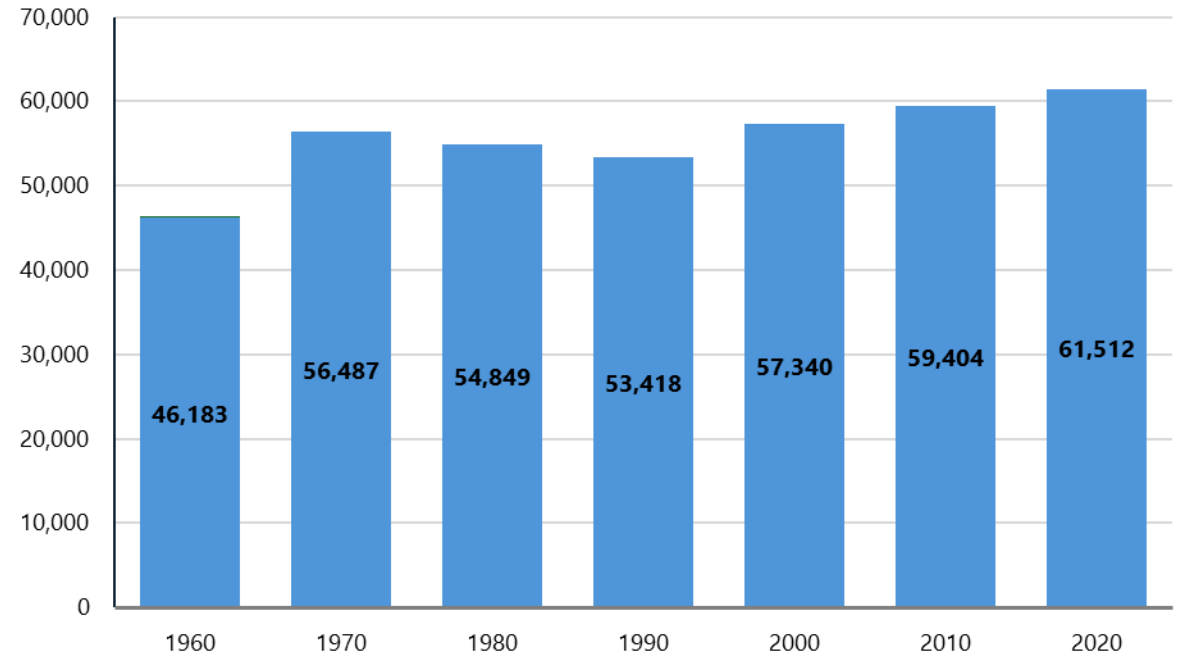
# Enrollment Drivers



# Population Trends

- Fairfield has experienced population growth each decade since 1990.
- Between the 2010 and 2020 census, Fairfield's population grew by 2,108 residents, or 3.6%, reaching 63,433 residents.
- Fairfield was the 20<sup>th</sup> fastest growing municipality in Connecticut between 2010 and 2020.
- Population estimates from the CT Department of Public Health show continued population growth of 1,921 residents (+3.1%) since 2020, with an estimated 63,433 residents as of 2023.

**Town of Fairfield Total Population: 1920 to 2020**



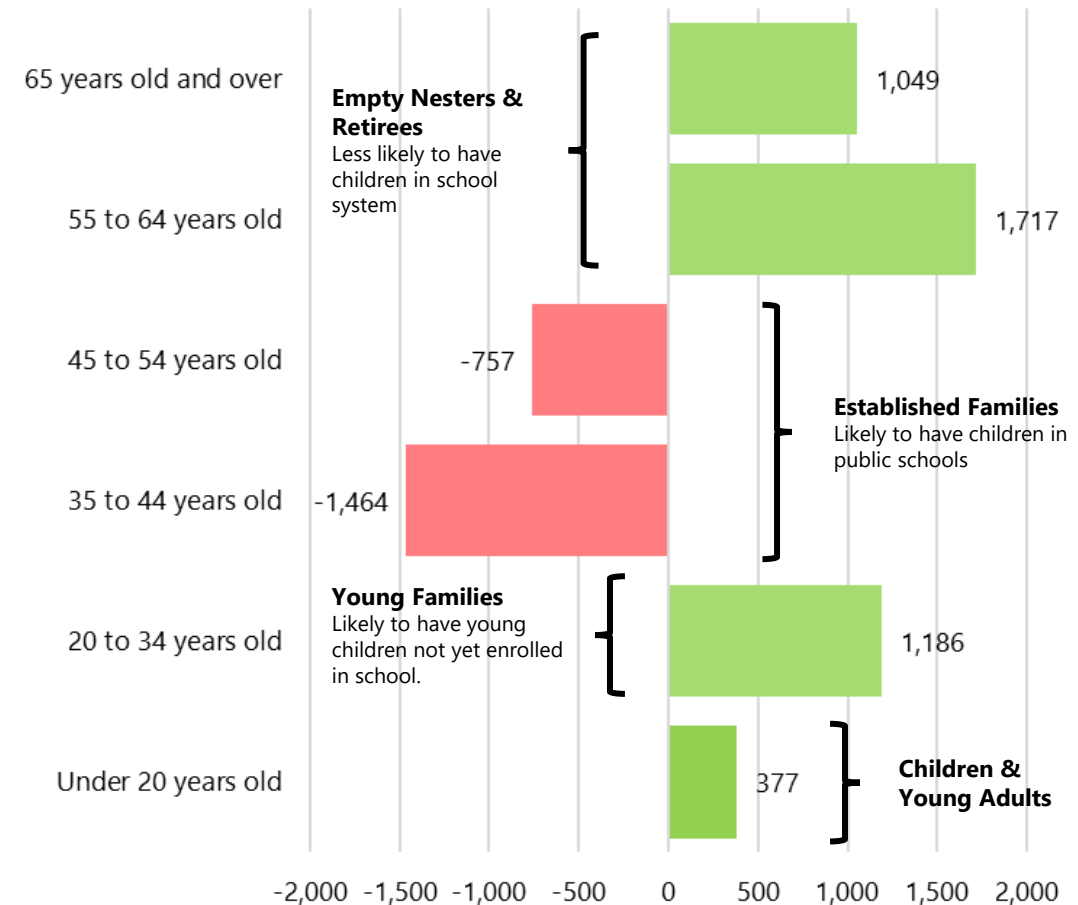
Source: Decennial Census 1920-2020.



# Population Trends

- While overall population increased modestly between 2010 and 2020, trends varied age group.
- Fairfield saw the fastest growth in the 55- to 64-year-old age group (+26%), with the population age 65 years old and over growing by 12%.
- The 20- to 34-year-old age groups also saw growth of 1,186 people, with 20- to 24-year-olds experiencing the greatest growth.
- Growth in population under 20 driven by 15- to 19-year-olds.
  - Likely due to impacts from college student population
- The population between the ages of 35 and 54 saw the greatest decline in population, decreasing by about 2,200 residents between 2010 and 2020.
  - This group is most likely to have school-aged children.

**Fairfield Population Change by Age Group:  
2010 to 2020**

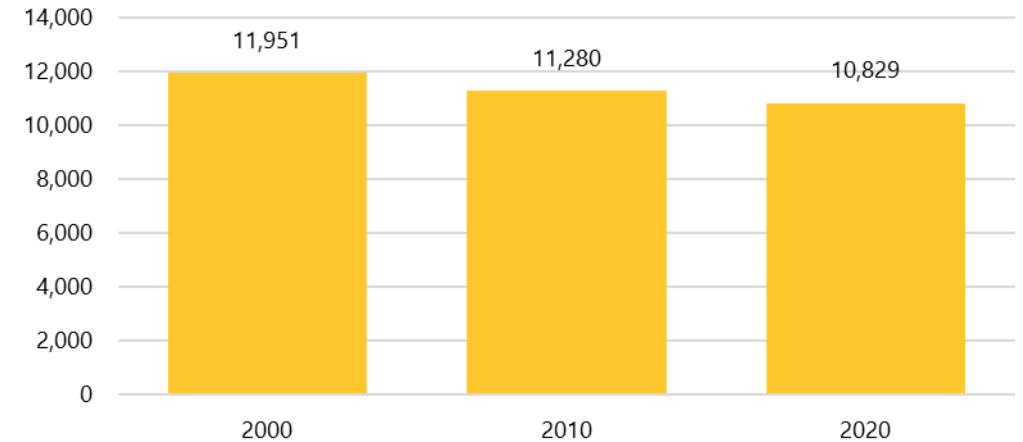




# Females of Childbearing Age

- Females of childbearing age (FOCBA) typically strongly correlates with births.
  - Connecticut's highest fertility rates are in the 30- to 39-year-old age cohorts.
- Decrease in FOCBA between 2000 and 2010 (including age groups with highest fertility rates) corresponds to a period of decreasing births.
- FOCBA decreased between 2010 and 2020 to 10,829 people. However, there was growth in the 15 to 24 year old population (influenced by college student population).
- There was growth in the 30- to 34-year-old cohort, offsetting a loss in the 35- to 39-year-old cohort, who have the highest birth rates.

**Females of Childbearing Age: 2000 to 2020**



Source US Census Bureau. Females of childbearing age 20-49

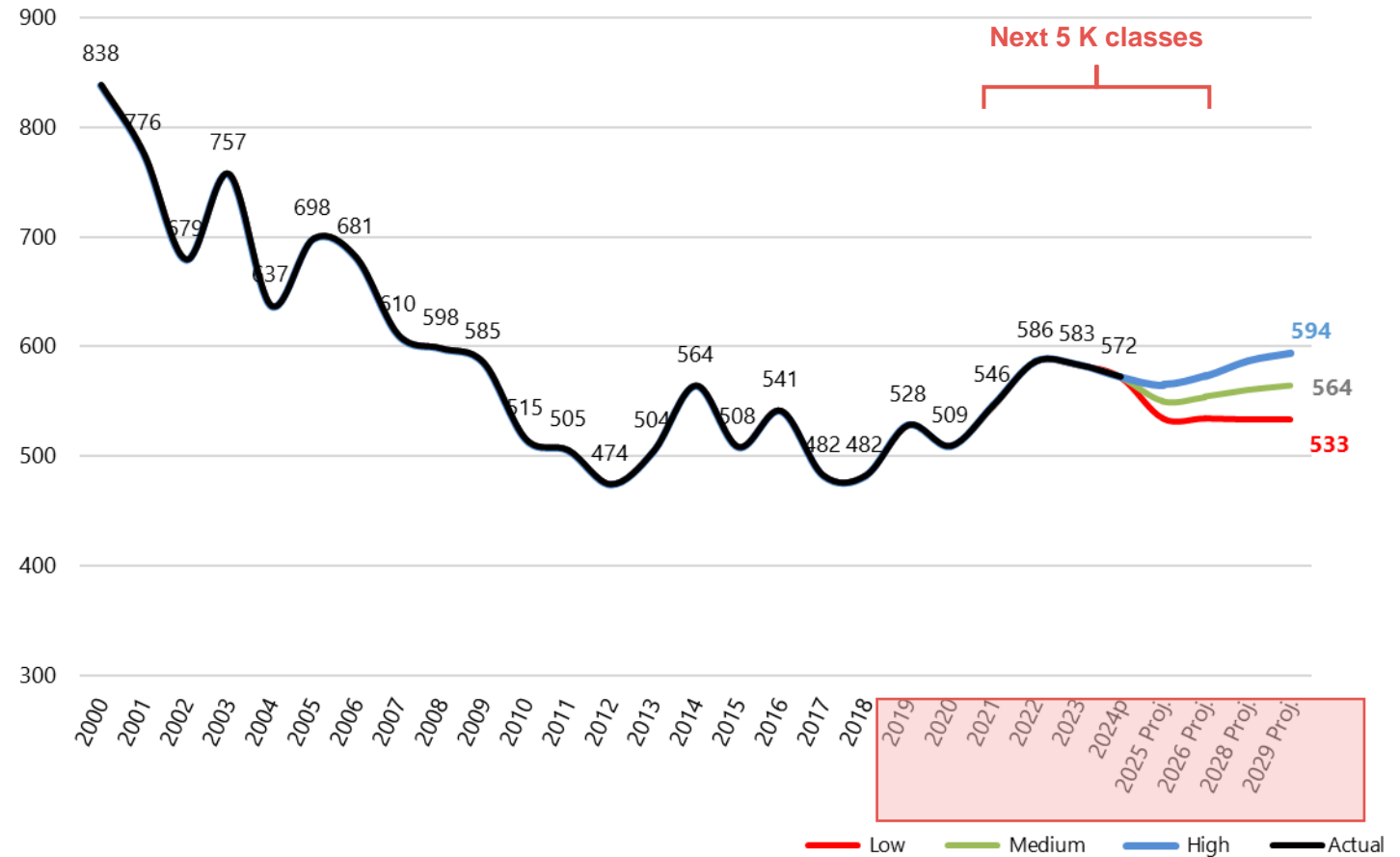
Age	2000	2010	2020	2010-2020
15 to 19 years	2214	2,684	4,186	56.0%
20 to 24 years	1512	2,102	2,625	24.9%
25 to 29 years	1220	1,054	990	-6.1%
30 to 34 years	2031	1,249	1,361	9.0%
35 to 39 years	2507	1,930	1,774	-8.1%
40 to 44 years	2490	2,381	1,888	-20.7%
45 to 49 years	2191	2,564	2,191	-14.5%
<b>Total</b>	<b>11,951</b>	<b>11,280</b>	<b>10,829</b>	<b>-4.0%</b>



# Birth Trends and Projections

- Note that beginning in 2019, birth tabulations and projections switch from calendar year to September-August to align with new kindergarten entry age requirements for 2024-25 year.
- Births last peaked in 2000 at 838 births and consistently decreased, reaching a low of 474 births in 2012.
- Births slowly increased between 2012 and 2020, averaging 510 annually, and increase more substantially between 2021 and 2024 (average of 572 annually).
- Preliminary data for 2024 shows continuation of elevated births.
- Three birth projection models prepared through 2029 to align with the high, medium, and low enrollment projection models.
  - Low model: avg. 533
  - Medium model: avg. 557
  - High model: avg. 580

Fairfield Actual and Projected Births: 2000 to 2029



Source: Connecticut Department of Public Health. 2024 births are preliminary

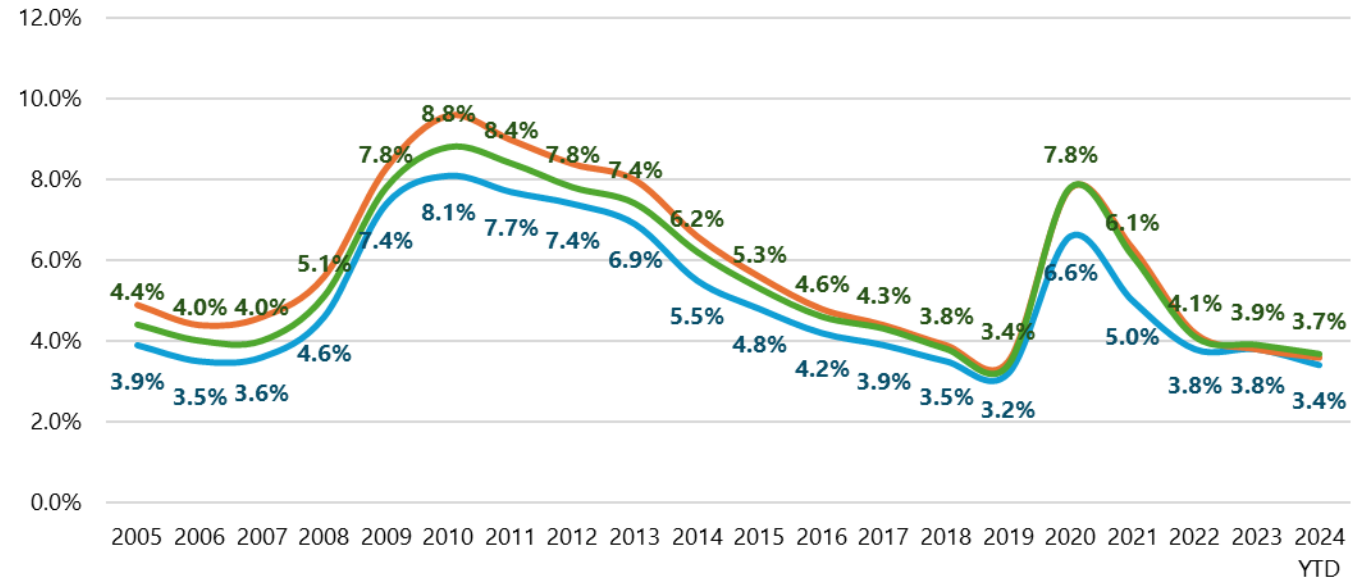
Note change from calendar year to Sept-Aug births starting in 2019 to align with new state entry age requirements



# Unemployment

- Fairfield's unemployment trends closely mirror both the state and Fairfield County, albeit at lower levels.
- For 2024 YTD, local unemployment has fell to under 3.5%, a return to pre-pandemic levels.

Local, County & State Unemployment Rates, 2005 - 2024 YTD



Source: CT Department of Labor, LAUS  
YTD data for 2024 is through November

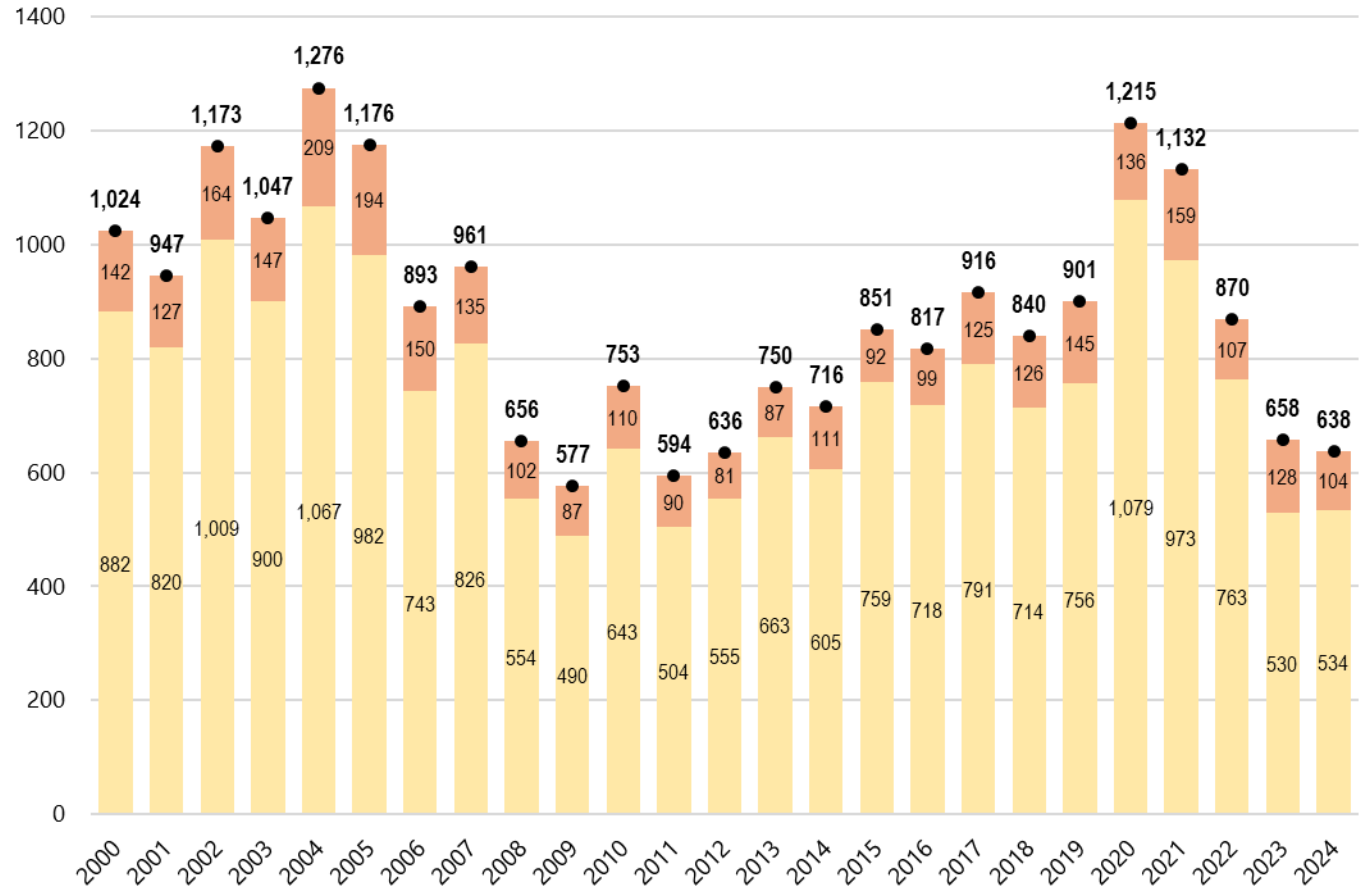
Fairfield Connecticut Fairfield County



# Home Sale Trends

- Home sales peaked in the early and mid 2000s at 1,276 total sales.
- Sharp drop in sales between 2007 and 2011, reaching a low of 577 sales in 2009.
- Sales steadily increased between 2009 and 2020 and averaged about 865 annually between 2015 and 2019.
- Spike in home sales in 2020 and 2021, averaging 1,175 annually, reaching the highest levels since 2005. Tied to increased migration during the pandemic.
- Sales returned to pre-pandemic levels and 2022.
- For 2023 and 2024 YTD, sales are trending well below pre-pandemic levels, averaging under 650 sales annually.
- High interest rates, high prices, and low inventory contributing to decrease in total sales.

### Fairfield Home Sale Trends: 2000 to 2024 YTD



Source: The Warren Group  
 YTD data for 2024 is through November

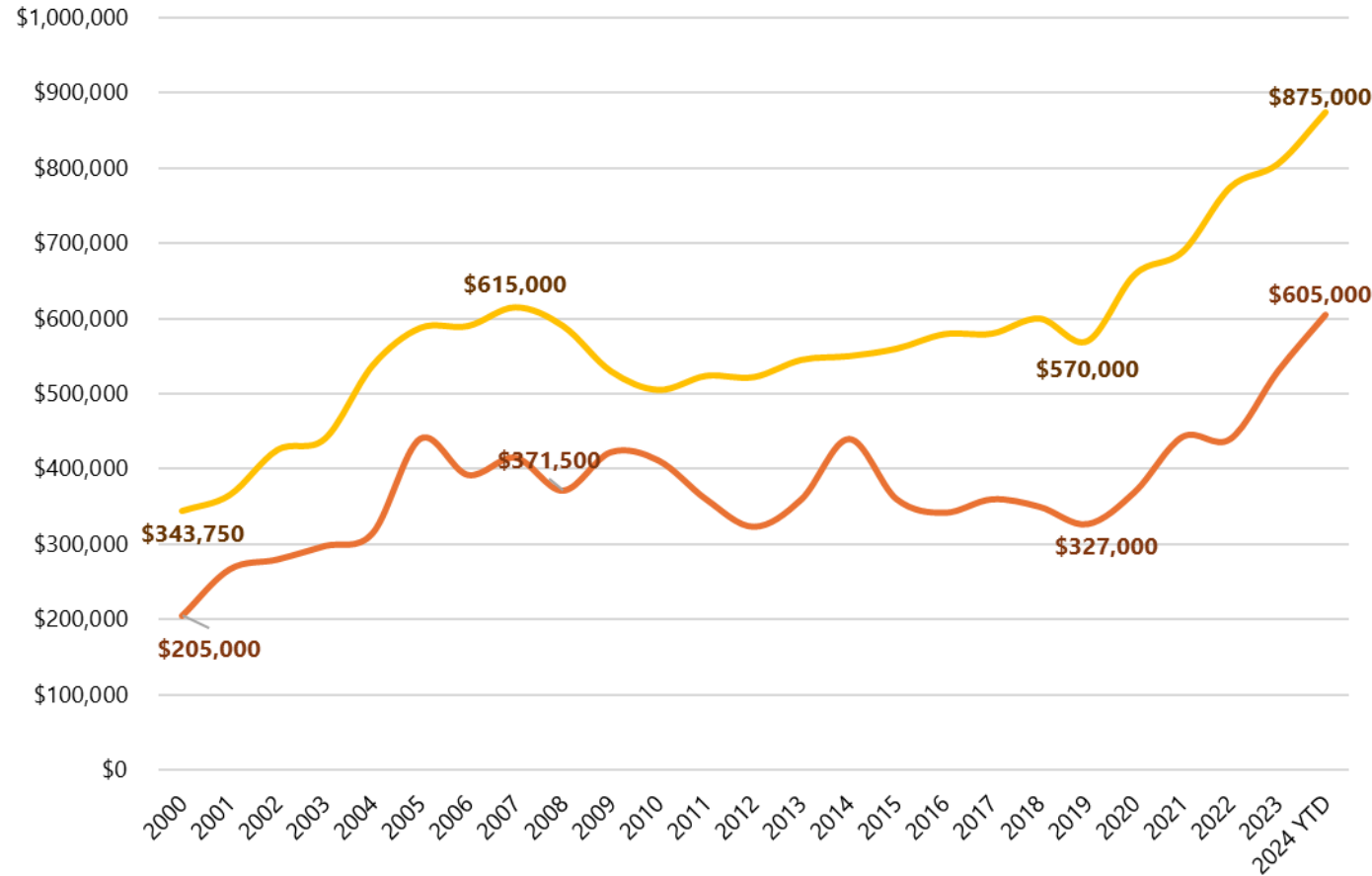
■ 1-Fam ■ Condo ● All



# Median Home Sale Price

- Like communities across the state and nation, Fairfield has seen a sharp increase in home sale prices since 2019.
- Median single-family sale prices increased by 54% from \$570,000 in 2019 to \$875,000 for 2024 YTD.
- Median condo sale prices have increased at an even greater rate (85%), rising from \$327,000 in 2019 to \$605,000 for 2024 YTD.

**Fairfield Median Sale Price: 2000 to 2024 YTD**



Source: The Warren Group  
YTD data for 2024 is through November

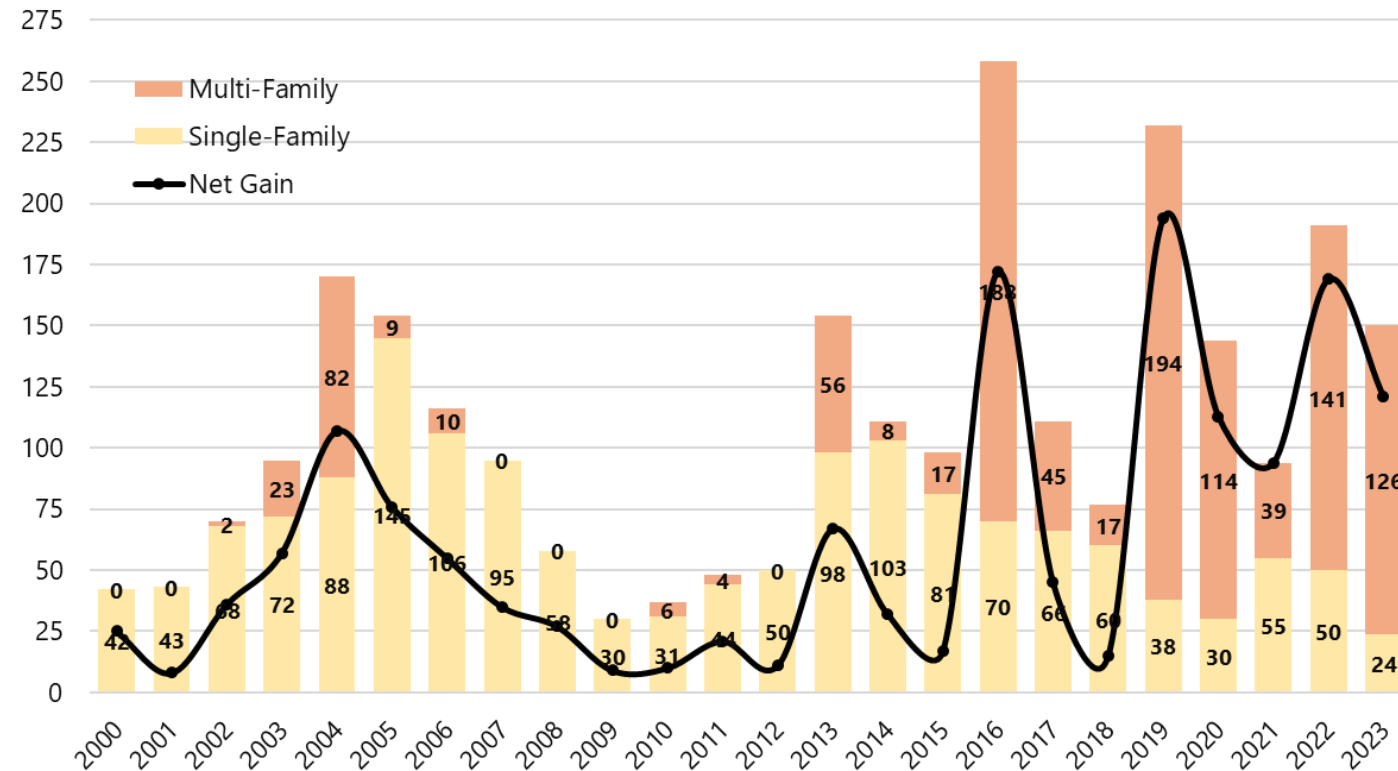
— 1-Fam — Condo



# Housing Permit Activity

- Single-family permit activity peaked in the early and mid 2000s, when Fairfield averaged over 100 new single-family permits annually.
- After decreasing during the Great Recession, single-family permits rebounded in the mid 2010s, however, a significant amount of demolition activity suggests that many of these permits were “tear-down rebuilds”, resulting in a small net gain in the number of single-family homes.
- Significant uptick in multi-family activity over the last decade. Fairfield has permitted nearly 900 multi-family units between 2014 and 2023.

Fairfield Housing Permits 2000-2023



Source: DECD, Demolition data not available for 2023



# Recently Built Housing

## Recently Completed Housing Development

Development	Development Type	Housing Units	Market Rate Units	Affordable Units	Status	ES School	FPS Enrollment (Fall 2024)
528 Black Rock Turnpike	Apartments	23	16	7	Completed - 2024	McKinley	1
2-6 Beacon Square	Apartments	26	18	8	Completed - 2024	McKinley	4
5545 Park Avenue	Apartments	100	70	30	Completed - 2024	N. Stratfield	0
78 Unquowa Place	Apartments	26	18	8	Completed - 2022	Riverfield	2
333 Unquowa Road	Apartments	90	81	9	Completed - 2021	Riverfield	7
Alto Fairfield (Kings Highway)	Apartments	160	144	16	Completed - 2021	McKinley	14
1613, 1645 Black Rock Turnpike	Apartments	29	20	9	Completed - 2018	Holland Hill	1
15 Pine Tree Lane	Apartments	50	0	50	Completed - 2017	McKinley	7
665, 711 Commerce	Apartments	101	90	11	Completed - 2017	McKinley	10
130 Fairchild Avenue	Apartments	54	27	27	Completed - 2014	McKinley	2
<b>Total Recently Completed</b>		<b>659</b>	<b>484</b>	<b>175</b>			<b>48</b>

Source: Town of Fairfield Planning Department, Data as of January 2025

- Planning Department has tracked nearly 660 recently built multi-family units in major developments (20+ units). Almost all are mixed-income and contain a mix of market rate and affordable units.
  - About 63% of recently built multi-family units are in the McKinley attendance zone, with the remaining units in Riverfield, N. Stratfield, and Holland Hill.
- As of fall 2024, these developments collectively have 48 students enrolled in FPS, or 0.07 students per unit.



# Housing Pipeline

- 1,075 housing units are either approved or under construction.
  - About 61% of approved or under construction housing units are in the McKinley attendance zone
- An additional 823 housing units are in various planning stages and have not received final approvals.
  - Significant share of planned or proposed units in Burr (37%) and Sherman (36%).
- Fairfield recently applied for a moratorium under CGS 8-30g, which (if accepted by the state), would halt applications for 8-30g developments for 4 years.

## Under Construction or Approved Housing

Development	Development Type	Housing Units	Market Rate Units	Affordable Units	Status	ES School
131 Beach Road	Apartments	40	28	12	Under Construction	Sherman
92, 140 Bronson	Apartments	91	63	28	Under Construction	Mill Hill
219 Ash Creek Boulevard	Apartments	367	257	110	Under Construction	McKinley
1-59 Post Road	Apartments	20	18	2	Approved	Sherman
81 Black Rock Turnpike	Apartments	245	215	30	Approved	McKinley
250 Pequot	Apartments	18	16	2	Approved	Mill Hill
60 Katona Drive	Apartments	18	16	2	Approved	Holland Hill
110 Woodrow Ave	Apartments	20	14	6	Approved	Mill Hill
222 Stillson Road	Apartments	24	16	8	Approved	Jennings
980 High Street	Apartments	40	8	32	Approved	Holland Hill
185 Thorpe Street	Age Restricted	148	133	15	Approved	Riverfield
83 Castle Avenue	Apartments	44	30	14	Approved	McKinley
<b>Total Approved/Under Construction</b>		<b>1075</b>	<b>814</b>	<b>261</b>		

## Planned or Proposed Housing

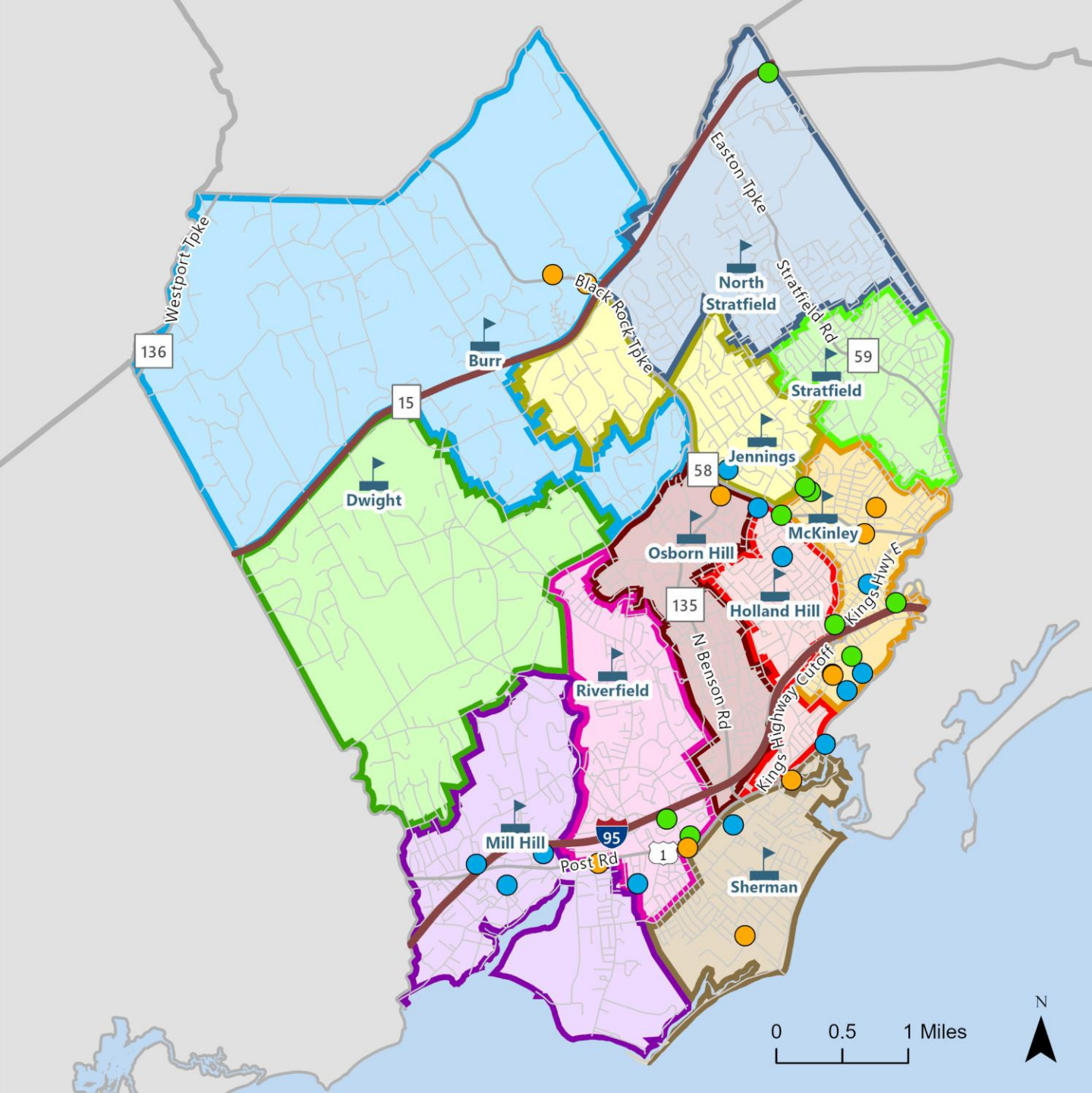
Development	Development Type	Housing Units	Market Rate Units	Affordable Units	Status	ES School
4480 Black Rock Turnpike	Apartments	96	67	29	Under Review	Burr
15 Unquowa	Apartments	63	44	19	Proposed	Riverfield
1427, 1443 Kings Highway	Apartments	18	16	2	Proposed	McKinley
277-301 Berkeley Road	Apartments	40	28	12	Pending	McKinley
467 Tunxis Hill / 80 Soundview	Apartments	46	32	14	Pending	McKinley
2179 Post Road	Apartments	40	32	8	Pending	Mill Hill
430, 452 Stillson	Apartments	19	17	2	Pending	Osborn Hill
441 Post Road	Apartments	250	220	30	Pending	Sherman
812-820 Reef /115 Forrest Ave	Apartments	45	31	14	Planned	Sherman
4221 & 4267 Black Rock Turnpike	Apartments	206	144	62	Planned	Burr
<b>Total Proposed/Pending</b>		<b>823</b>	<b>631</b>	<b>192</b>		

# Fairfield Housing Pipeline

## Housing Pipeline, by Status

- Recently Built
- Approved or Under Construction
- Planned or Proposed

Housing pipeline projects are concentrated in the TOD station areas, Route 1 corridor, and Black Rock Turnpike corridor



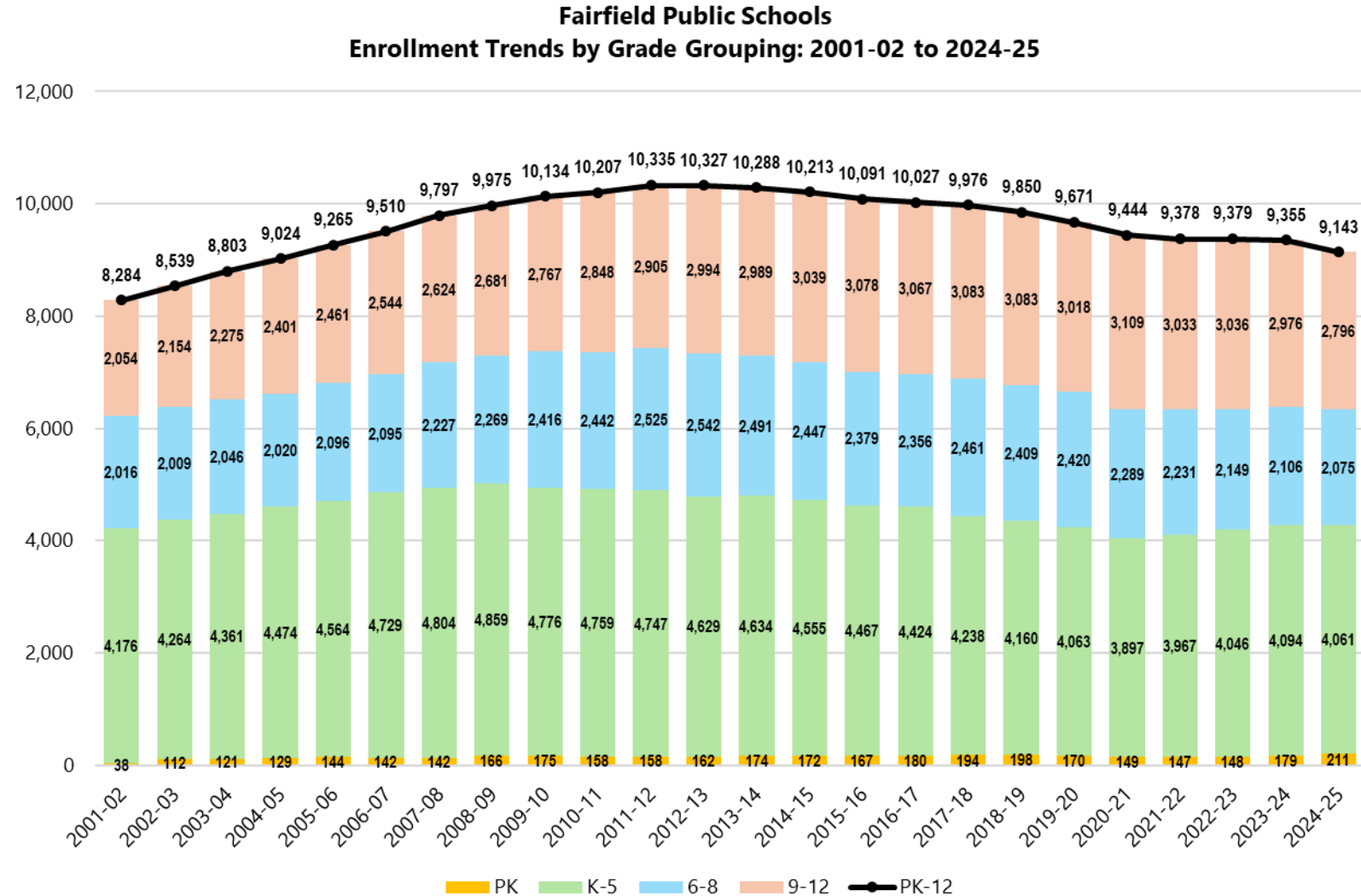


# Enrollment Trends Analysis



# Historic Enrollment Trends

- Districtwide PK-12 enrollment peaked in 2012-13 at 10,335 students.
- PK-12 enrollment decreased of the last twelve years, reaching 9,143 students in 2024-25.
- Elementary school enrollment peaked in 2008-09 at 4,859 students
- Middle school enrollment peaked at 2,542 students in 2012-13.
- High school enrollment peaked at 3,109 students in 2020-21.





# Historic Enrollment Trends

- Large kindergarten cohorts that entered between 2003-04 and 2011-12 have now graduated, including a very large cohort that graduated in 2023-24.
- Smaller kindergarten cohorts have entered over the last decade, resulting in declining enrollment as these cohorts matriculate.
- Enrollment “bubble” entered kindergarten in 2021-22 and is now in 3rd grade.

School Year	K	1	2	3	4	5	6	7	8	9	10	11	12
2001-02	736	708	720	664	699	649	714	641	661	561	552	458	483
2002-03	695	763	717	724	666	699	657	711	641	609	545	537	463
2003-04	791	722	771	715	712	650	690	660	696	608	608	533	526
2004-05	762	792	729	772	696	723	657	702	661	661	601	598	541
2005-06	801	806	784	716	768	689	730	661	705	651	638	586	586
2006-07	822	806	794	806	731	770	703	728	664	707	621	641	575
2007-08	736	848	811	822	839	748	777	711	739	664	705	616	639
2008-09	785	751	843	817	818	845	756	781	732	713	653	690	625
2009-10	723	798	753	853	828	821	856	768	792	718	697	649	703
2010-11	769	742	808	760	848	832	825	846	771	781	708	693	666
2011-12	800	785	736	810	763	853	844	821	860	749	748	708	700
2012-13	683	842	775	742	820	767	862	854	826	816	730	742	706
2013-14	721	703	857	779	750	824	777	853	861	735	780	729	745
2014-15	686	750	710	869	784	756	808	788	851	793	739	781	726
2015-16	644	691	757	729	870	776	767	815	797	788	770	740	780
2016-17	646	675	706	773	737	887	776	772	808	737	780	783	767
2017-18	631	675	696	720	773	743	894	779	788	761	725	784	813
2018-19	623	643	688	696	724	786	728	896	785	762	756	749	816
2019-20	648	644	651	694	697	729	804	734	882	752	742	752	772
2020-21	589	658	618	641	689	702	739	810	740	841	742	742	784
2021-22	699	633	661	651	645	678	702	718	811	688	829	743	773
2022-23	634	736	664	686	683	643	690	715	744	745	691	820	780
2023-24	625	668	746	674	693	688	678	699	729	670	750	693	863
2024-25	617	647	682	753	669	693	690	682	703	646	672	740	738

Source: CT State Department of Education: 2006-07 to 2023-24. Fairfield Public Schools 2024-25



# Elementary Enrollment Trends

## Elementary (K-5) Enrollment Trends, by School

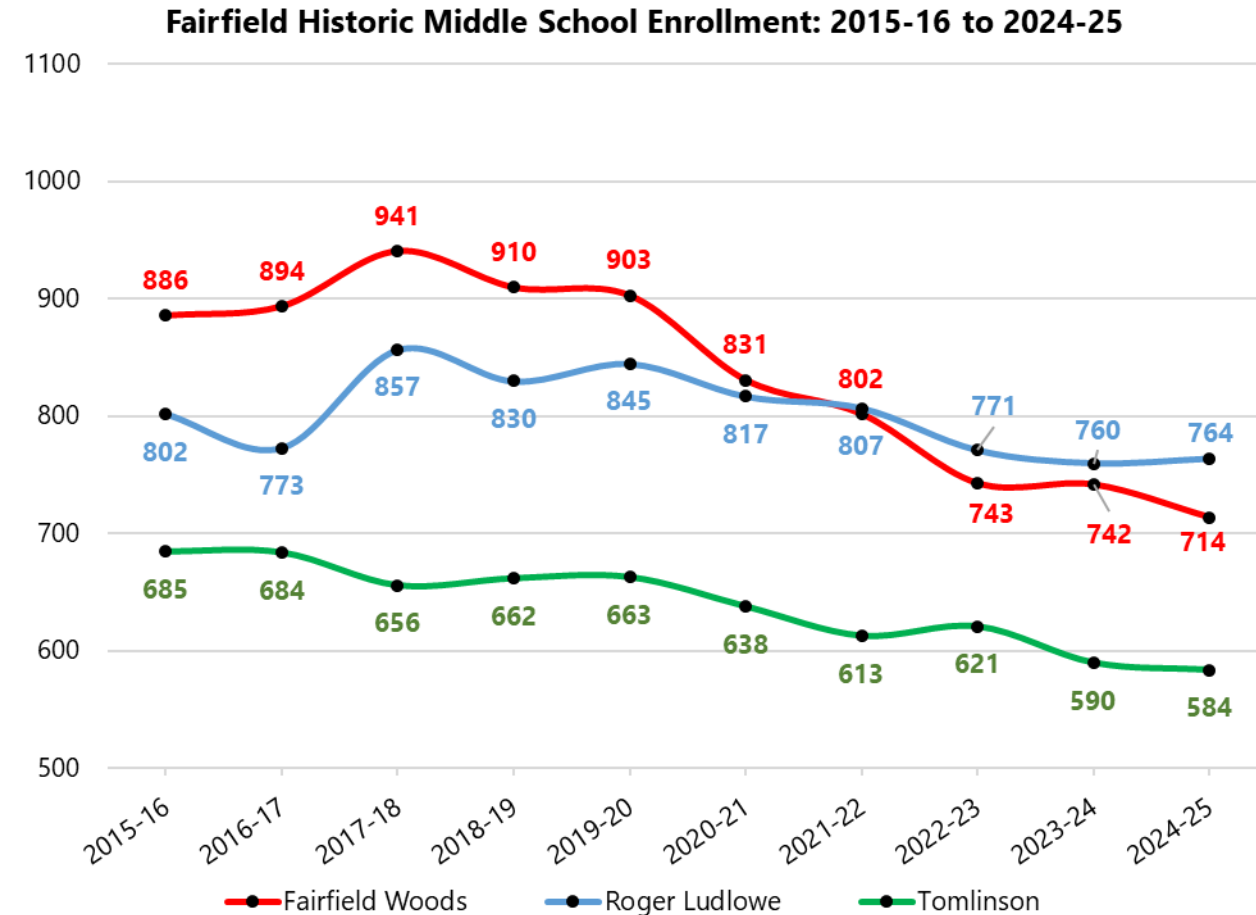
School	2015-16	2016-17	2017-18	2018-19	2019-20	2020-21	2021-22	2022-23	2023-24	2024-25	5-Year Change	10-Yr Change
Burr	388	383	380	387	366	350	339	352	357	347	-5.2%	-10.6%
Dwight	310	314	314	298	274	266	255	245	231	228	-16.8%	-26.5%
Holland Hill	405	404	379	359	350	350	360	374	379	385	10.0%	-4.9%
Jennings	320	317	289	295	288	270	259	262	280	280	-2.8%	-12.5%
McKinley	426	449	432	438	437	436	441	433	470	470	7.6%	10.3%
Mill Hill	382	384	347	346	354	360	368	404	402	371	4.8%	-2.9%
North Stratfield	415	397	380	377	372	372	413	411	414	409	9.9%	-1.4%
Osborn Hill	489	445	423	418	407	371	409	441	444	446	9.6%	-8.8%
Riverfield	408	425	413	406	406	365	375	391	398	406	0.0%	-0.5%
Roger Sherman	479	484	470	447	423	413	402	389	373	385	-9.0%	-19.6%
Stratfield	440	419	406	384	381	338	337	340	339	326	-14.4%	-25.9%

- While overall elementary enrollment has been relatively over the last five years, trends vary by school:
  - Holland Hill (+10%), North Stratfield (+9.9%), Osborn Hill (9.6%), McKinley (7.6%), and Mill Hill (4.8%) experienced increasing enrollment while Riverfield experienced stable enrollment
  - Dwight (-16.8%), Stratfield (-14.4%), Roger Sherman (-9.0%), Burr (-5.2%), and Jennings (-2.8%) saw decreasing enrollment
- Note that special program placement impacts enrollment trends at individual schools



# Middle School Enrollment Trends

- While overall middle school enrollment has decreased by 13.3% over the last decade, trends vary by school.
  - Fairfield Woods saw the steepest rate of decline at -19.4%.
  - Tomlinson (-14.7%) also experienced a modest decrease in enrollment over the last decade.
  - Roger Ludlow saw the smallest decrease over the last decade (-4.7%) and is now the largest of the three middle schools.

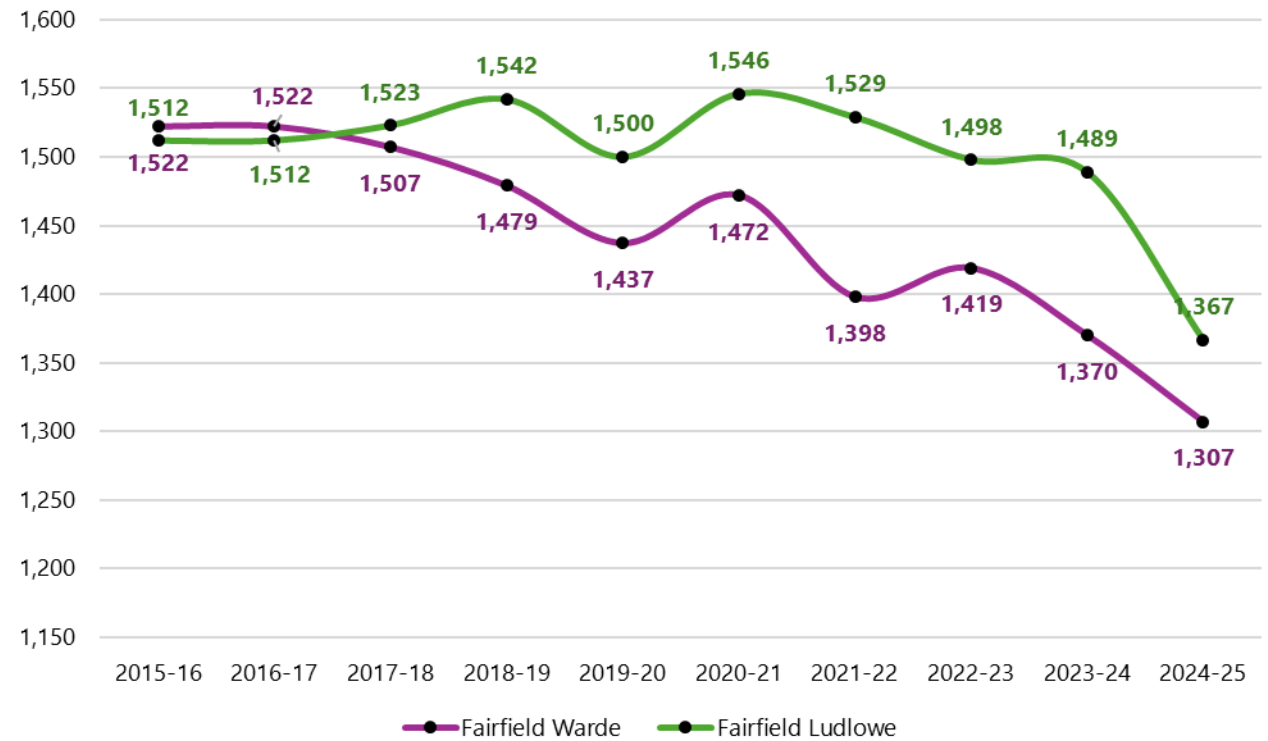




# High School Enrollment Trends

- While overall high school enrollment has decreased by 10.7% over the last decade, trends vary by school.
  - Fairfield Warde saw a steepest rate of decline at -14.1%.
  - Fairfield Ludlowe saw a slower rate of decline at -9.6%, with the biggest drop off in 2024-25 due to the graduation of an abnormally large 12<sup>th</sup> grade class
  - From 2015-16 to 2017-18, the two high schools were roughly the same size. As of 2024-25, Fairfield Ludlowe is approximately 60 students larger.
  - The number of students in the Alternative HS program at the Walter Fitzgerald Campus has increased from 29 students in 2015-16 to 73 students in 2024-25.

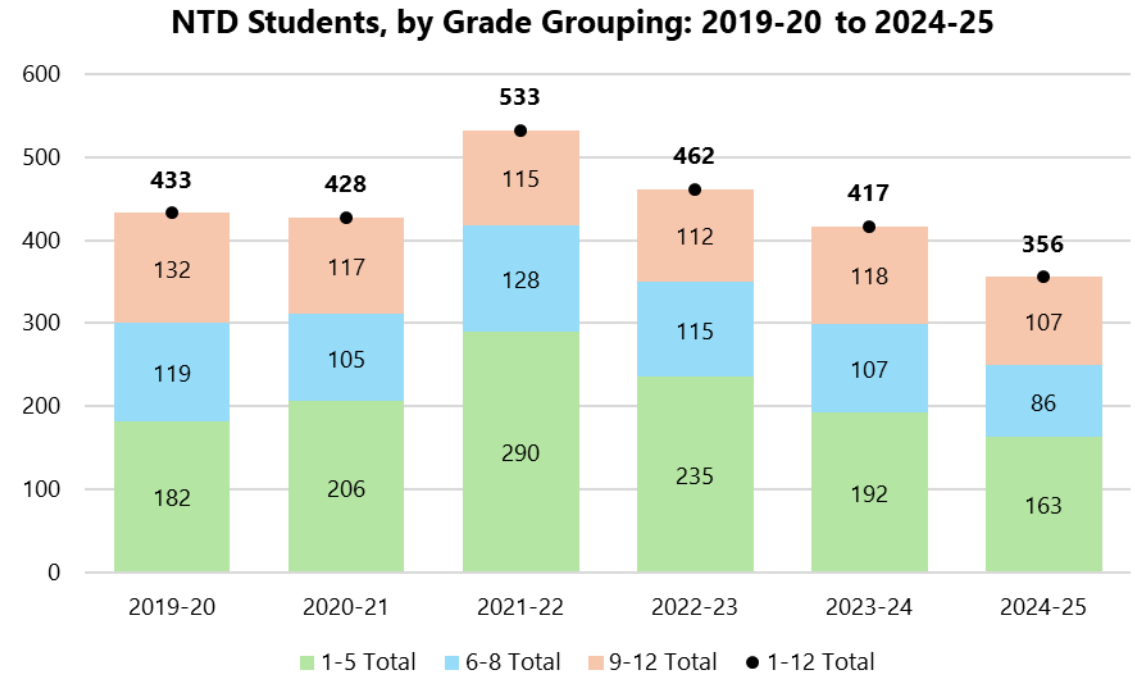
Fairfield High School Enrollment: 2015-16 to 2024-25





# New-to-District Student Analysis

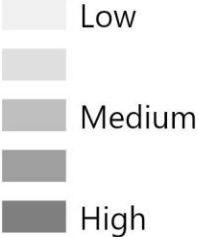
- New-to-District (NTD) students are identified by student ID (SASIDs) that were not in the prior year's enrollment database.
- NTD students averaged about 430 students annually in 2019-20 and 2020-21
- NTD students increased dramatically to 533 students in 2021-22, correspondent to peak home sale activity.
- NTD students have decreased over the last three years, corresponding to declining home sales. For 2024-25, FPS saw just 356 NTD students, which is the lowest level in recent memory.
- The elementary grades (1<sup>st</sup> grade) typically see the greatest number of NTD students.
- For the middle and high schools, the greatest number of NTD students are seen during transition grades (6<sup>th</sup> and 9<sup>th</sup> grades).



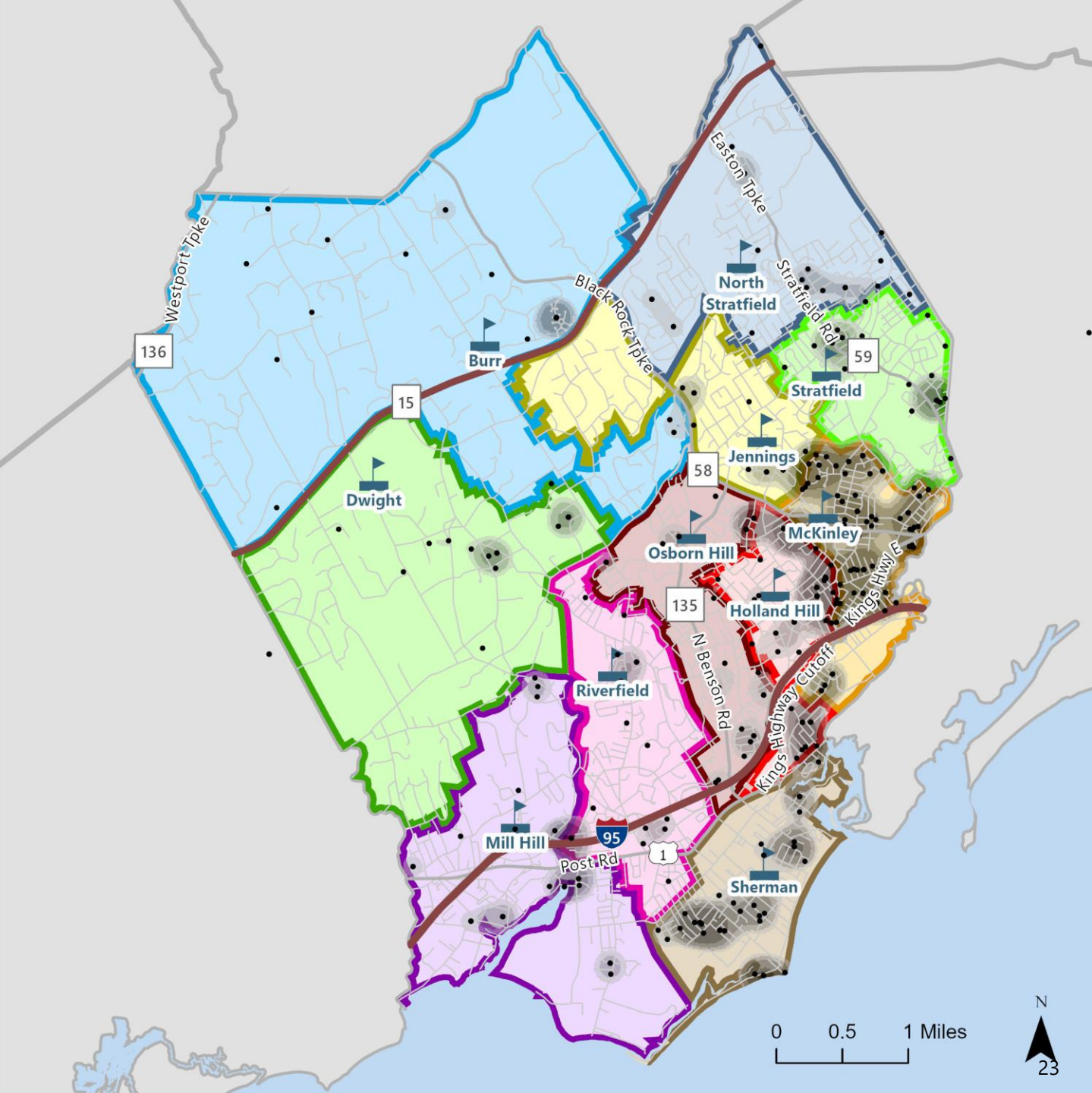
# New-to-District Students: 2024-25

• NTD Students

### NTD Density



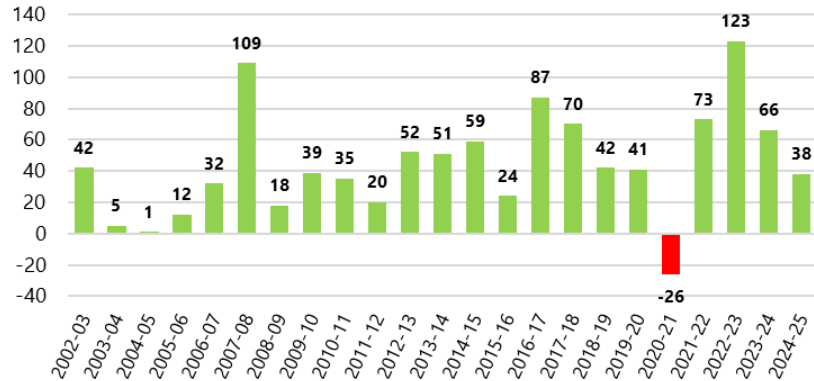
NTD student patterns largely reflect the density of the community, with the greatest concentration of NTD students in Fairfield’s southern and eastern neighborhoods, proximate to Route 1, and the train stations. These areas contain the highest density housing as well as most of the community’s multi-family units, which have more mobile populations than single-family homes.



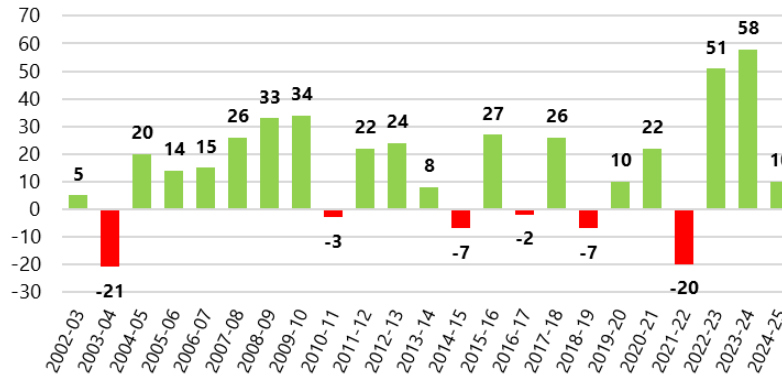


# Net Migration

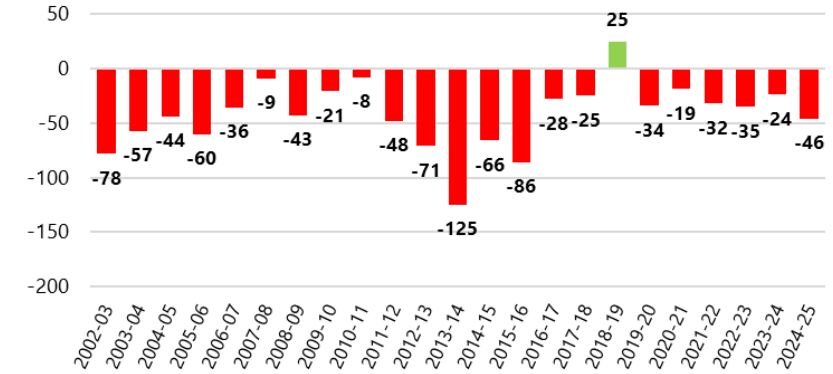
### Historic Elementary Net Migration



### Historic Middle School Net Migration



### Historic High School Net Migration



- Net migration accounts for both NTD students as well as student withdrawals.
- Over the last decade, the elementary schools have seen net in-migration averaging +54 students annually. In-migration for 2024-25 is trending below the recent historic average.
- Middle schools have averaged positive net in-migration of +18 annually, with 2024-25 trending slightly below recent historic levels.
- High schools averaged net out-migration of -30 students over the last decade, primarily due to the loss of students during the 8<sup>th</sup> to 9<sup>th</sup> grade transition.



# Enrollment Projections



# Projections Primer

- Based on Cohort Survival Methodology – Standard method accepted by OGA (formerly OSCG&R) for school construction projects
- The cohort survival methodology **relies on observed data from the recent past in order to project the near future**
- Persistency Ratios calculated from historic enrollment data to determine growth or loss in a class as it progresses through the school system
- Persistency Ratio of 1.0 means cohort size remains the same; 1.05 means the cohort size increases by 5%, or a cohort of 100 grows to 105 the following year
- Persistency Ratios account for the various external factors affecting enrollments: housing characteristics, residential development, economic conditions, student transfers in and out of system, and student mobility
- Changes in population, housing stock and tenure, and economic conditions help explain persistency ratios
- Changes in programming affect persistency ratios of individual schools
- Recent changes to Kindergarten entry age adds uncertainty to Kindergarten enrollment until trends are established.



# Persistency Ratios

- Birth-K ratio correlates well with size of the birth cohorts. Small birth cohorts in 2012, 2017, and 2018 resulted in high Birth-K ratios, while years with larger birth cohorts see smaller Birth-K Ratio.
- Fairfield sees persistency ratios over 1 for most grades, indicating in-migration, with the exception of the 8<sup>th</sup>-9<sup>th</sup> grade transition, which has averaged 0.91 over the last four years.
- Estimate of migration compares students in grades 1 through 7 with grades 2 through 8 the year prior. Over the last ten years, Fairfield's estimate of migration has averaged +0.94%, with this year falling well below the long-term historic average at just +0.5%.

Year	Birth-K	K-1	1-2	2-3	3-4	4-5	5-6	6-7	7-8	8-9	9-10	10-11	11-12	Est. of Migration
2002-03	0.9789	1.0367	1.0127	1.0056	1.0030	1.0000	1.0123	0.9958	1.0000	0.9213	0.9715	0.9728	1.0109	0.42%
2003-04	0.9950	1.0388	1.0105	0.9972	0.9834	0.9760	0.9871	1.0046	0.9789	0.9485	0.9984	0.9780	0.9795	-0.87%
2004-05	1.0481	1.0013	1.0097	1.0013	0.9734	1.0154	1.0108	1.0174	1.0015	0.9497	0.9885	0.9836	1.0150	0.41%
2005-06	0.9558	1.0577	0.9899	0.9822	0.9948	0.9899	1.0097	1.0061	1.0043	0.9849	0.9652	0.9750	0.9799	-0.35%
2006-07	1.0593	1.0062	0.9851	1.0281	1.0209	1.0026	1.0203	0.9973	1.0045	1.0028	0.9539	1.0047	0.9812	0.81%
2007-08	1.0839	1.0316	1.0062	1.0353	1.0409	1.0233	1.0091	1.0114	1.0151	1.0000	0.9972	0.9919	0.9969	2.04%
2008-09	1.0370	1.0204	0.9941	1.0074	0.9951	1.0072	1.0107	1.0051	1.0295	0.9648	0.9834	0.9787	1.0146	0.65%
2009-10	1.1350	1.0166	1.0027	1.0119	1.0135	1.0037	1.0130	1.0159	1.0141	0.9809	0.9776	0.9939	1.0188	1.07%
2010-11	1.1017	1.0263	1.0125	1.0093	0.9941	1.0048	1.0049	0.9883	1.0039	0.9861	0.9861	0.9943	1.0262	0.23%
2011-12	1.1747	1.0208	0.9919	1.0025	1.0039	1.0059	1.0144	0.9952	1.0165	0.9715	0.9577	1.0000	1.0101	0.46%
2012-13	1.1197	1.0525	0.9873	1.0082	1.0123	1.0052	1.0106	1.0118	1.0061	0.9488	0.9746	0.9920	0.9972	0.61%
2013-14	1.2057	1.0293	1.0178	1.0052	1.0108	1.0049	1.0130	0.9896	1.0082	0.8898	0.9559	0.9986	1.0040	0.69%
2014-15	1.1726	1.0402	1.0100	1.0140	1.0064	1.0080	0.9806	1.0142	0.9977	0.9210	1.0054	1.0013	0.9959	0.41%
2015-16	1.2505	1.0073	1.0093	1.0268	1.0012	0.9898	1.0146	1.0087	1.0114	0.9260	0.9710	1.0014	0.9987	0.84%
2016-17	1.2792	1.0481	1.0217	1.0211	1.0110	1.0195	1.0000	1.0065	0.9914	0.9247	0.9898	1.0169	1.0365	1.00%
2017-18	1.3312	1.0449	1.0311	1.0198	1.0000	1.0081	1.0079	1.0039	1.0207	0.9418	0.9837	1.0051	1.0383	1.26%
2018-19	1.2361	1.0190	1.0193	1.0000	1.0056	1.0168	0.9798	1.0022	1.0077	0.9670	0.9934	1.0331	1.0408	0.44%
2019-20	1.1489	1.0337	1.0124	1.0087	1.0014	1.0069	1.0229	1.0082	0.9844	0.9580	0.9738	0.9947	1.0307	0.58%
2020-21	1.1594	1.0154	0.9596	0.9846	0.9928	1.0072	1.0137	1.0075	1.0082	0.9535	0.9867	1.0000	1.0426	-0.28%
2021-22	1.2921	1.0747	1.0046	1.0534	1.0062	0.9840	1.0000	0.9716	1.0012	0.9297	0.9857	1.0013	1.0418	0.19%
2022-23	1.3154	1.0529	1.0490	1.0378	1.0492	0.9969	1.0177	1.0185	1.0362	0.9186	1.0044	0.9891	1.0498	2.92%
2023-24	1.2967	1.0536	1.0136	1.0151	1.0102	1.0073	1.0544	1.0130	1.0196	0.9005	1.0067	1.0029	1.0524	1.87%
2024-25	1.1820	1.0352	1.0210	1.0094	0.9926	1.0000	1.0029	1.0059	1.0057	0.8861	1.0030	0.9867	1.0649	0.54%



# Kindergarten Caveats & Assumptions

- New Kindergarten entry date became effective for 2024-25 school year per state law.
  - Cutoff date shifted from January 1<sup>st</sup> to September 1<sup>st</sup>.
  - Parents of students who turn five years old after September 1<sup>st</sup> can apply to enter kindergarten early via a “waiver” process.
- For 2024-25, parents of students who turned five years old could choose to “opt in” to kindergarten this year. 72 students, or 11.7% of this year’s kindergarten class, turned five years old after September 1<sup>st</sup>. This is lower than in prior years before the new entry date went into effect.
  - This aligns well with prior projections, with this year’s kindergarten enrollment within 2 students of the projections.
- For 2025-26 and beyond, FPS plans to implement an assessment process for students requesting a waiver. This is anticipated to result in a slightly lower share of 4 years olds enrolling in kindergarten compared to 2024-25.
- The kindergarten projection was revised downward slightly for 2025-26 to account for this change in policy.

**Age as of September 1st of Kindergarten Year**

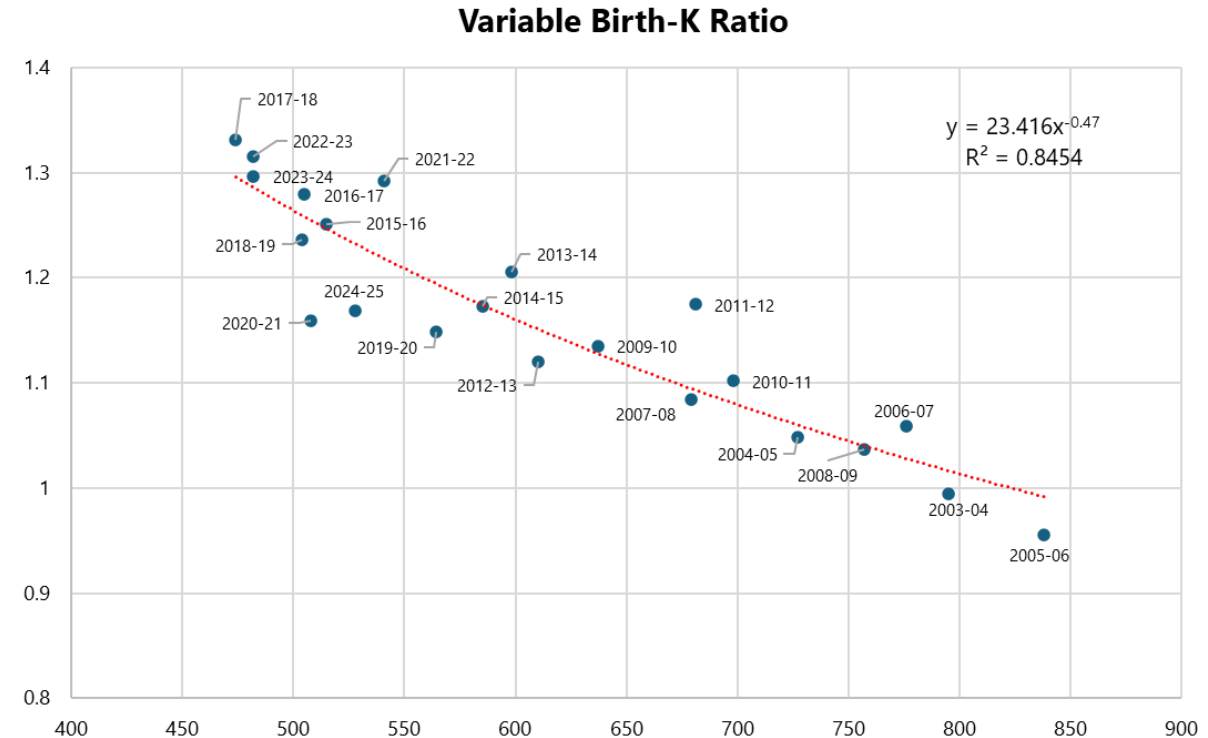
School Year	4 Years Old	5 Years Old	6 Years Old	Total Kindergarten Enrollment	Share of 4 Year Olds
2021-22	99	566	34	699	14.2%
2022-23	105	502	27	634	16.6%
2023-24	95	505	25	625	15.2%
2024-25	72	527	18	617	11.7%
<b>3-Year Avg (Exclude 2024-25)</b>	<b>100</b>	<b>524</b>	<b>29</b>	<b>653</b>	<b>15.3%</b>

Per Public Act 23-208, Section 1(a) , beginning with the 2024-2025 school year, children need to turn 5 years old on or before September 1 in order to be automatically eligible for kindergarten.



# Kindergarten Projection Methodology

- Traditionally projections use a “Birth-K ratio” which divides the size of a kindergarten class with its corresponding birth cohort 5-years prior.
- As births increase, Birth-K ratios tend to decrease and vice versa. The static Birth-K ratio approach works well when births are stable.
- However, elevated births beginning in 2021 will be entering kindergarten starting in 2026-27. Using historic Birth-K ratios from smaller birth cohorts to project these kindergarten classes will likely over-project kindergarten enrollment.
- Recommend the “variable Birth-K” approach based on a historic “best fit line.” Modifies the Birth-K ratio based on the size of the birth cohort.
- MP Planning has utilized this methodology successfully in other DRG A and B communities for several years.





# Housing Multipliers

School Year	K	1	2	3	4	5	6	7	8	9	10	11	12	K-12 Total	K-5 Total	6-8 Total	9-12 Total
2023-24	0	0	0	0	0	0	0	0	0	0	0	0	0	0	0	0	0
2024-25	0	0	0	0	0	0	0	0	0	0	0	0	0	0	0	0	0
2025-26	0	0	0	0	0	0	0	0	0	0	0	0	0	0	0	0	0
2026-27	0	0	0	0	0	0	0	0	0	0	0	0	0	0	0	0	0
2027-28	2	2	2	2	2	2	2	2	2	2	2	2	2	26	12	6	8
2028-29	4	4	4	4	3	3	5	5	5	6	6	6	6	61	22	15	24
2029-30	6	6	6	5	5	5	7	7	7	7	7	7	7	82	33	21	28
2030-31	8	8	8	7	7	7	9	10	10	10	10	9	9	112	45	29	38
2031-32	8	8	8	7	7	7	9	10	10	10	10	9	9	112	45	29	38
2032-33	8	8	8	7	7	7	9	10	10	10	10	9	9	112	45	29	38
2033-34	8	8	8	7	7	7	9	10	10	10	10	9	9	112	45	29	38
2034-35	8	8	8	7	7	7	9	10	10	10	10	9	9	112	45	29	38

- Multipliers developed for the nearly 1,900 under construction, approved, proposed, pending, and planned housing units.
  - Applied 0.12 students per unit (excluding age restricted units) based on an analysis of enrollment in existing multi-family developments conducted by the Town’s Planning Department.
- “Discounting” was applied to the multipliers, accounting for the rate of multi-family development already in the baseline projections. Baseline projections already account for nearly 900 new multi-family units over the next ten years. Discounting allows multipliers in excess of the baseline to be added to the projections
- Multipliers were phased in to the projections beginning in 2027-28, with full build out of units anticipated by 2030-31.
- Multipliers were assigned to individual school based on the share of housing pipeline units within each attendance zone.



# Projections Assumptions

These projections are predicated on the following assumptions:

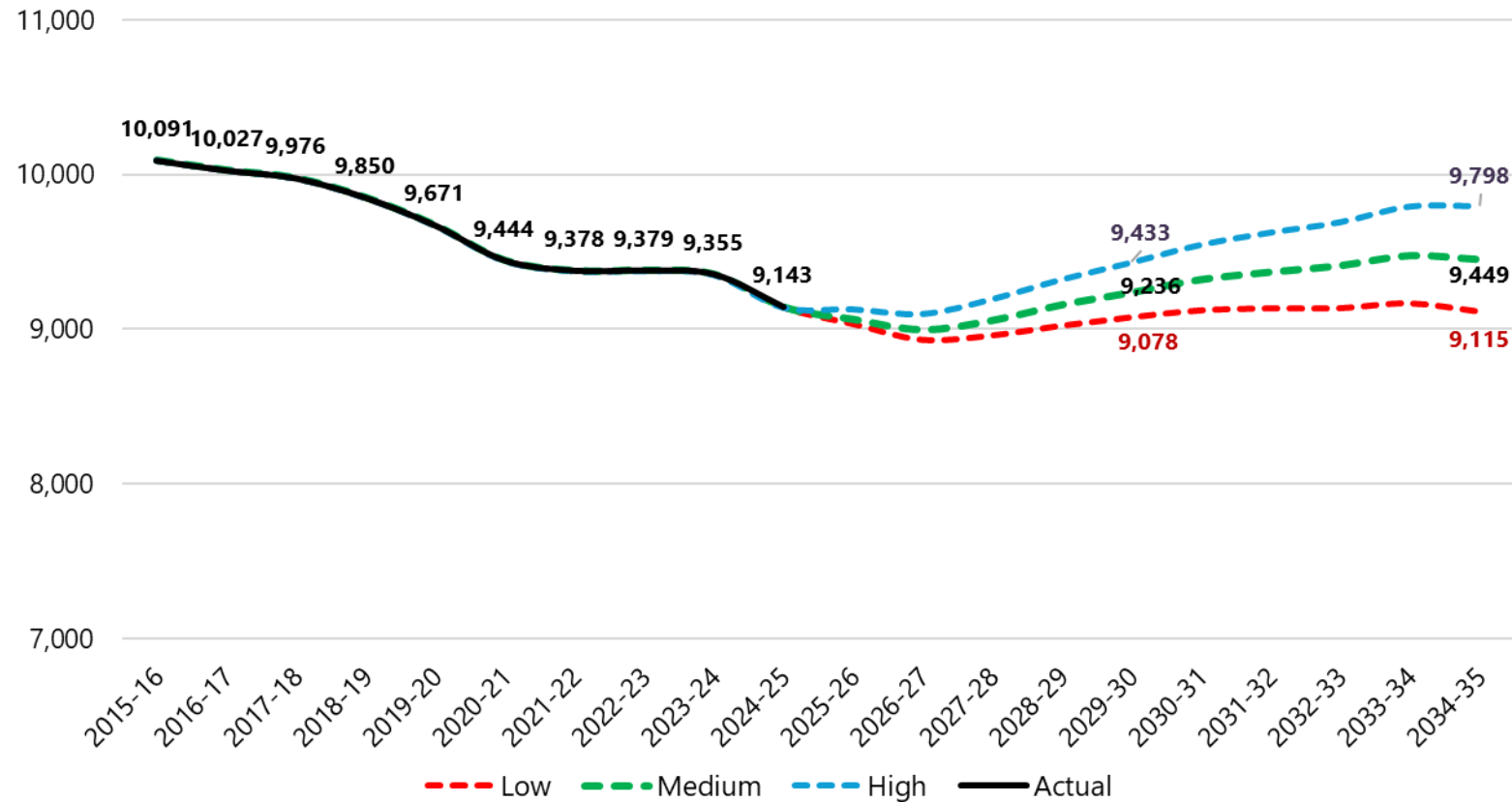
- Pre-K enrollment will remain at current levels at 211 students per year
- Housing, in-migration, and future birth assumptions at the districtwide level will prove accurate.
- Kindergarten will return to a 12-month birth window, although for next year a slightly smaller kindergarten class is expected due to the rollout of a new assessment process.
- Multipliers were added to all three projection models beginning in 2027-28.
- **High projections:** Assume high birth projections (average 580 annually) and elevated student in-migration of 1.56%, which is higher than the historic 10-year average of 0.9%.
- **Medium projections:** Assume medium birth projections (average 557 annually), and student migration averages about 1%, slightly higher than the historic 10-year average.
- **Low projections:** Assume low birth projections (average 533 annually) and student in-migration averages 0.56% which is below the historic average 10-year average.



# Districtwide Projections

- Both the High and Medium Models agree, showing growth albeit at different levels, while the low model is projecting flatter enrollment.
- By 2029-30, all three models have a range of 355 students.
- Under the medium model, PK-12 averages 9,253 students over the next decade with a peak of 9,474 students in 2033-34.
- **Recent housing conditions, demographics and enrollment in-migration align best with Medium Model and represents the most likely direction. However, housing conditions and demographic shifts should be monitored.**

**Fairfield Public Schools Actual and Projected PK-12 Enrollment: 2015-16 to 2034-35**

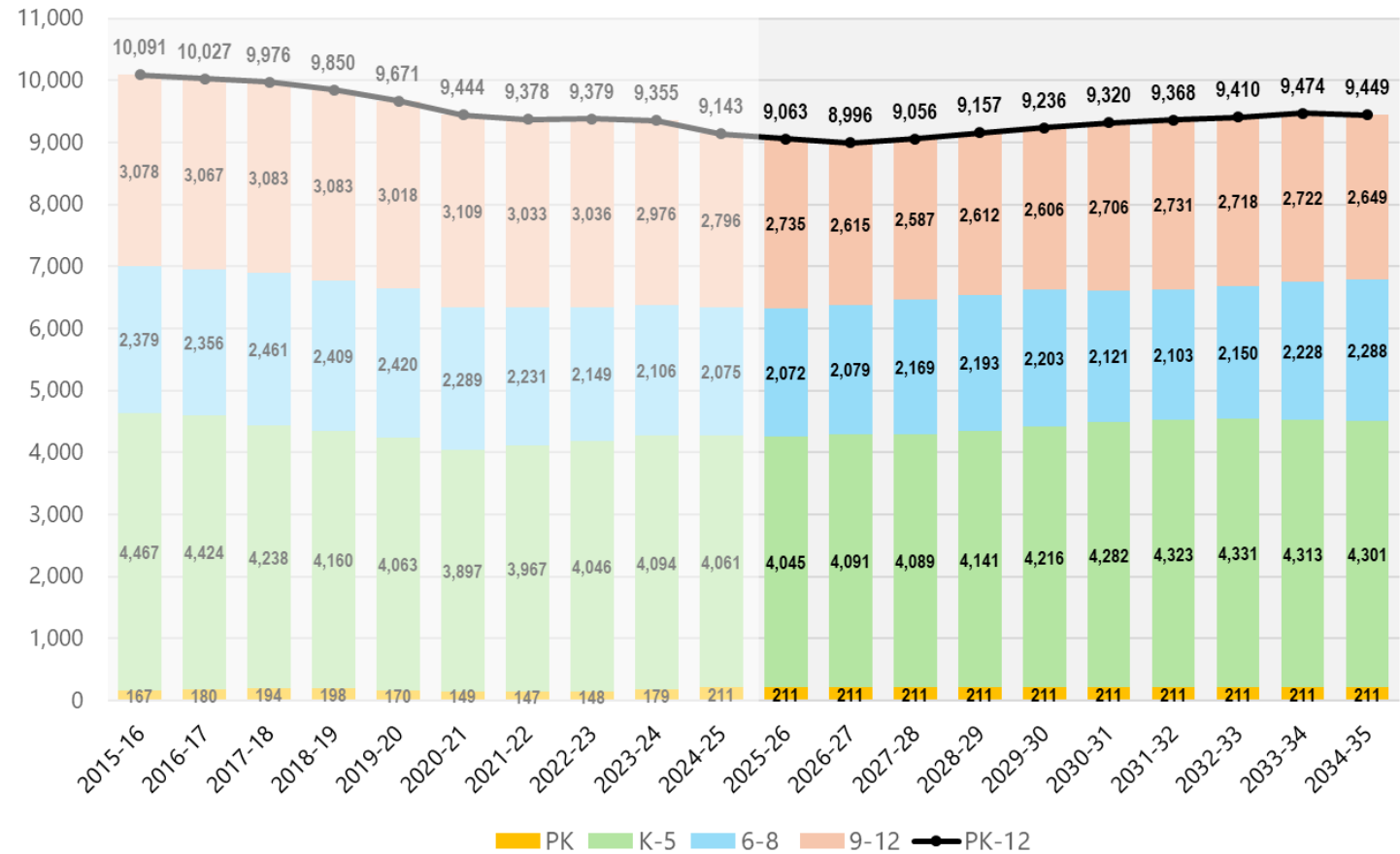




# Districtwide Projections

- Overall PK-12 enrollment is projected to decrease over the next two years, reaching a low of 8,996 students in 2026-27. Enrollment is projected to rebound over the last 8 projected years, peaking at 9,474 students in 2033-34.
- Elementary (K-5) enrollment is projected to grow by 3.8% over the first five years, with growth continuing, albeit at a slower rate of 2.0%, over the final five years.
- Middle School enrolment is projected to increase by 6.2% over the next five years and an additional 3.9% over the last five years as larger elementary cohorts matriculate up.
- High school enrollment is projected to decrease by 6.8% over the next five years as smaller middle school cohorts matriculate up. Over the last five years, high school enrollment levels off and begins to increase.

Fairfield Public Schools Historic & Projected Enrollment: 2015-16 to 2034-35 (Medium Projections Model)





# Districtwide Projections (Medium)

## Districtwide Enrollment Projections (Medium Model) by Grade: 2025-26 to 2034-35

Year	Births	K	1	2	3	4	5	6	7	8	9	10	11	12	PK	K-5	6-8	9-12	K-12	PK-12
<b>2024-25</b>	528	617	647	682	753	669	693	690	682	703	646	672	740	738	211	4,061	2,075	2,796	8,932	9,143
<b>2025-26</b>	509	628	644	653	694	757	669	698	688	686	645	641	670	779	211	4,045	2,072	2,735	8,852	9,063
<b>2026-27</b>	546	661	657	650	666	701	756	681	700	698	630	643	638	704	211	4,091	2,079	2,615	8,785	8,996
<b>2027-28</b>	586	688	693	666	665	675	702	772	685	712	643	630	642	672	211	4,089	2,169	2,587	8,845	9,056
<b>2028-29</b>	583	688	722	702	681	673	675	718	777	698	658	645	631	678	211	4,141	2,193	2,612	8,946	9,157
<b>2029-30</b>	572	684	721	731	717	689	674	691	722	790	643	657	643	663	211	4,216	2,203	2,606	9,025	9,236
<b>2030-31</b>	550	672	717	730	747	726	690	690	696	735	729	644	656	677	211	4,282	2,121	2,706	9,109	9,320
<b>2031-32</b>	554	674	703	724	743	754	725	704	693	706	676	727	640	688	211	4,323	2,103	2,731	9,157	9,368
<b>2032-33</b>	557	676	705	710	737	750	753	740	707	703	649	674	723	672	211	4,331	2,150	2,718	9,199	9,410
<b>2033-34</b>	560	678	707	712	723	744	749	768	743	717	646	647	670	759	211	4,313	2,228	2,722	9,263	9,474
<b>2034-35</b>	564	680	709	714	725	730	743	764	771	753	659	644	643	703	211	4,301	2,288	2,649	9,238	9,449



# Elementary School Projections

Elementary (PK-5) Projections by School (Medium)

Elementary School	2024-25	2025-26	2026-27	2027-28	2028-29	2029-30	2030-31	2031-32	2032-33	2033-34	2034-35	5-year Δ	10-year Δ
Burr	347	345	348	347	352	360	366	369	370	366	365	3.7%	5.2%
Dwight	228	220	220	224	228	233	238	240	239	239	239	2.2%	4.8%
Holland Hill	417	422	426	425	413	415	421	423	423	421	420	-0.5%	0.7%
Jennings	280	274	278	279	287	282	287	291	292	291	291	0.7%	3.9%
McKinley	473	478	480	497	504	506	514	519	518	515	513	7.0%	8.5%
Mill Hill	371	384	389	378	381	394	408	414	416	414	412	6.2%	11.1%
North Stratfield	411	406	409	404	411	431	435	442	441	440	439	4.9%	6.8%
Osborn Hill	448	446	455	446	457	456	465	469	471	471	470	1.8%	4.9%
Riverfield	407	410	427	416	423	430	425	429	431	430	428	5.7%	5.2%
Roger Sherman	385	382	383	393	407	421	421	424	426	424	423	9.4%	9.9%
Stratfield	393	377	375	379	377	387	401	402	403	401	400	-1.5%	1.8%
Wade ECC (Pre-K)	112	112	112	112	112	112	112	112	112	112	112	0.0%	0.0%
<b>Total</b>	<b>4,272</b>	<b>4,256</b>	<b>4,302</b>	<b>4,300</b>	<b>4,352</b>	<b>4,427</b>	<b>4,493</b>	<b>4,534</b>	<b>4,542</b>	<b>4,524</b>	<b>4,512</b>	<b>3.6%</b>	<b>5.6%</b>

Peak 8-year projected enrollment

Includes Pre-K enrollment at the Warde ECC, Holland Hill, and Stratfield and assumes continuation of 2024-25 levels.

- Note that elementary school totals include PK students at Holland Hill, Stratfield, and the Warde ECC (Pre-K only)
- Over the next five years:
  - Roger Sherman (+9.4%), McKinley (+7%), Mill Hill (+6.2%) and Riverfield (5.7%) are projected to experience the greatest growth. Burr, Dwight, Jennings, North Stratfield, and Osborn Hill are projected to see more modest growth of less than 5%.
  - Holland Hill and Stratfield are projected to decrease slightly.
- All schools are anticipated to see their peak projected 8-year enrollment in either 2031-32 or 2032-33.
- See Appendix B for by school and by grade projections.



# Middle School Projections

Middle Projections by School (Medium)

Middle School	2024-25	2025-26	2026-27	2027-28	2028-29	2029-30	2030-31	2031-32	2032-33	2033-34	2034-35	5-year Δ	10-year Δ
Fairfield Woods	718	746	736	794	805	814	773	759	770	803	824	13.4%	14.8%
Roger Ludlowe	769	749	740	768	768	769	742	754	780	798	821	0.0%	6.8%
Tomlinson	588	577	603	607	620	620	606	590	600	627	643	5.4%	9.4%

Peak 8-year projected enrollment

- Fairfield Woods is projected to grow by 13.4% over the next five years as larger cohorts enter 6<sup>th</sup> grade. Peak projected enrollment is 814 students in 2029-30.
- Roger Ludlowe is projected to stay relatively stable over the next five years before growing modestly over the final five years of the projections. Peak projected enrollment is 780 students in 2032-33.
- Tomlinson is projected to grow by 5.4% over the next five years, with modest growth continuing over the final five years. Peak projected enrollment is 620 students in 2029-30.
- See Appendix B for by school and by grade projections.



# High School Projections

High School Projections by School (Medium)

High School	2024-25	2025-26	2026-27	2027-28	2028-29	2029-30	2030-31	2031-32	2032-33	2033-34	2034-35	5-year Δ	10-year Δ
Fairfield Warde	1,307	1,281	1,198	1,187	1,197	1,194	1,249	1,275	1,267	1,254	1,226	-8.6%	-6.2%
Fairfield Ludlowe	1,367	1,332	1,295	1,278	1,293	1,290	1,335	1,334	1,329	1,346	1,301	-5.6%	-4.8%
Alternative HS	73	73	73	73	73	73	73	73	73	73	73	0.0%	0.0%
Outplaced	49	49	49	49	49	49	49	49	49	49	49	0.0%	0.0%

- Fairfield Warde is projected to decrease over the next three years to just under 1,200 students before rebounding. Peak projected enrollment is 1,275 students in 2031-32.
- Fairfield Ludlowe is also projected to decrease in the near term, reaching a low of 1,288 students in 2027-28 before rebounding. Peak projected enrollment is 1,335 students in 2030-31.
- The number of students in the alternative high school program (Walter Fitzgerald Campus) was held constant at 73 students and outplaced students were held constant at 49 students based on 2024-25 levels.



# Appendix A: Districtwide Projections



# Districtwide Projections (Low)

## Districtwide Enrollment Projections (Low Model) by Grade: 2025-26 to 2034-35

Year	Births	K	1	2	3	4	5	6	7	8	9	10	11	12	PK	K-5	6-8	9-12	K-12	PK-12
<b>2024-25</b>	528	617	647	682	753	669	693	690	682	703	646	672	740	738	211	4,061	2,075	2,796	8,932	9,143
<b>2025-26</b>	509	618	642	650	692	757	665	702	689	688	642	641	666	773	211	4,024	2,079	2,722	8,825	9,036
<b>2026-27</b>	546	661	643	645	660	695	752	674	701	695	628	637	635	696	211	4,056	2,070	2,596	8,722	8,933
<b>2027-28</b>	586	688	690	648	657	665	693	764	675	709	637	625	633	666	211	4,041	2,148	2,561	8,750	8,961
<b>2028-29</b>	583	688	718	695	660	661	662	705	765	684	651	636	623	665	211	4,084	2,154	2,575	8,813	9,024
<b>2029-30</b>	572	684	718	724	706	664	659	675	706	774	627	647	631	652	211	4,155	2,155	2,557	8,867	9,078
<b>2030-31</b>	534	661	714	724	736	712	662	672	677	715	710	625	643	661	211	4,209	2,064	2,639	8,912	9,123
<b>2031-32</b>	534	661	688	718	734	740	708	673	672	683	654	704	618	672	211	4,249	2,028	2,648	8,925	9,136
<b>2032-33</b>	533	660	688	691	728	738	736	719	673	678	624	649	697	645	211	4,241	2,070	2,615	8,926	9,137
<b>2033-34</b>	533	660	687	691	700	732	734	747	719	679	620	619	642	728	211	4,204	2,145	2,609	8,958	9,169
<b>2034-35</b>	533	660	687	690	700	703	728	745	747	725	621	615	613	670	211	4,168	2,217	2,519	8,904	9,115



# Districtwide Projections (High)

## Districtwide Enrollment Projections (High Model) by Grade: 2025-26 to 2034-35

Year	Births	K	1	2	3	4	5	6	7	8	9	10	11	12	PK	K-5	6-8	9-12	K-12	PK-12
<b>2024-25</b>	528	617	647	682	753	669	693	690	682	703	646	672	740	738	211	4,061	2,075	2,796	8,932	9,143
<b>2025-26</b>	509	631	648	657	699	764	672	709	696	695	649	647	673	781	211	4,071	2,100	2,750	8,921	9,132
<b>2026-27</b>	546	661	663	658	673	709	767	687	715	709	641	650	648	710	211	4,131	2,111	2,649	8,891	9,102
<b>2027-28</b>	586	688	697	675	676	685	714	787	694	731	656	644	653	686	211	4,135	2,212	2,639	8,986	9,197
<b>2028-29</b>	583	688	725	709	694	687	689	733	796	710	679	661	649	693	211	4,192	2,239	2,682	9,113	9,324
<b>2029-30</b>	572	684	725	738	728	705	692	709	741	813	658	681	663	685	211	4,272	2,263	2,687	9,222	9,433
<b>2030-31</b>	565	681	721	738	757	741	710	712	718	758	754	662	684	701	211	4,348	2,188	2,801	9,337	9,548
<b>2031-32</b>	573	686	715	732	755	768	744	728	719	731	700	755	662	721	211	4,400	2,178	2,838	9,416	9,627
<b>2032-33</b>	580	691	721	726	749	766	771	763	735	732	675	701	755	698	211	4,424	2,230	2,829	9,483	9,694
<b>2033-34</b>	587	695	726	732	743	760	769	791	770	749	676	676	701	796	211	4,425	2,310	2,849	9,584	9,795
<b>2034-35</b>	594	699	730	737	749	754	763	789	798	784	692	677	676	739	211	4,432	2,371	2,784	9,587	9,798



# Appendix B: Individual School Projection (Medium)



# Elementary School Projections (Medium)

Fairfield Public Schools Elementary School Enrollment Projections 2025-26										
School	K	1	2	3	4	5	K-5th	PK	PK-5	
Burr	56	58	55	55	68	53	345	0	345	
Dwight	34	33	37	39	37	40	220	0	220	
Holland Hill	58	59	64	77	70	62	390	32	422	
Jennings	43	40	54	40	52	45	274	0	274	
McKinley	69	76	81	92	75	85	478	0	478	
Mill Hill	57	54	59	67	83	64	384	0	384	
North Stratfield	64	65	56	66	83	72	406	0	406	
Osborn Hill	70	70	75	75	87	69	446	0	446	
Riverfield	62	74	66	66	84	58	410	0	410	
Roger Sherman	63	72	58	60	64	65	382	0	382	
Stratfield	52	43	48	57	54	56	310	67	377	
<b>TOTAL</b>	<b>628</b>	<b>644</b>	<b>653</b>	<b>694</b>	<b>757</b>	<b>669</b>	<b>4045</b>	<b>99</b>	<b>4144</b>	

Fairfield Public Schools Elementary School Enrollment Projections 2028-29										
School	K	1	2	3	4	5	K-5th	PK	PK-5	
Burr	62	65	60	57	55	53	352	0	352	
Dwight	37	40	39	40	34	38	228	0	228	
Holland Hill	63	65	64	61	62	66	381	32	413	
Jennings	47	47	47	46	44	56	287	0	287	
McKinley	78	85	81	83	86	91	504	0	504	
Mill Hill	63	66	66	65	58	63	381	0	381	
North Stratfield	70	72	72	68	71	58	411	0	411	
Osborn Hill	76	81	78	76	70	76	457	0	457	
Riverfield	67	71	70	67	78	70	423	0	423	
Roger Sherman	69	72	69	66	73	58	407	0	407	
Stratfield	56	58	56	52	42	46	310	67	377	
<b>TOTAL</b>	<b>688</b>	<b>722</b>	<b>702</b>	<b>681</b>	<b>673</b>	<b>675</b>	<b>4141</b>	<b>99</b>	<b>4240</b>	

Fairfield Public Schools Elementary School Enrollment Projections 2031-32											
School	K	1	2	3	4	5	K-5th	PK	PK-5		
Burr	62	62	63	63	62	57	369	0	369		
Dwight	36	38	40	43	42	41	240	0	240		
Holland Hill	62	62	65	66	69	67	391	32	423		
Jennings	46	46	48	49	52	50	291	0	291		
McKinley	75	83	85	91	94	91	519	0	519		
Mill Hill	62	66	68	74	73	71	414	0	414		
North Stratfield	68	70	73	75	79	77	442	0	442		
Osborn Hill	73	78	81	82	79	76	469	0	469		
Riverfield	67	70	73	73	74	72	429	0	429		
Roger Sherman	68	72	71	71	73	69	424	0	424		
Stratfield	55	56	57	56	57	54	335	67	402		
<b>TOTAL</b>	<b>674</b>	<b>703</b>	<b>724</b>	<b>743</b>	<b>754</b>	<b>725</b>	<b>4323</b>	<b>99</b>	<b>4422</b>		

Fairfield Public Schools Elementary School Enrollment Projections 2034-35												
School	K	1	2	3	4	5	K-5th	PK	PK-5			
Burr	62	62	61	61	59	60	365	0	365			
Dwight	36	39	40	42	41	41	239	0	239			
Holland Hill	62	63	64	64	66	69	388	32	420			
Jennings	46	47	48	49	51	50	291	0	291			
McKinley	77	83	83	89	90	91	513	0	513			
Mill Hill	62	66	68	72	71	73	412	0	412			
North Stratfield	69	71	72	73	76	78	439	0	439			
Osborn Hill	74	80	80	80	77	79	470	0	470			
Riverfield	68	70	72	71	72	75	428	0	428			
Roger Sherman	69	72	70	69	71	72	423	0	423			
Stratfield	55	56	56	55	56	55	333	67	400			
<b>TOTAL</b>	<b>680</b>	<b>709</b>	<b>714</b>	<b>725</b>	<b>730</b>	<b>743</b>	<b>4301</b>	<b>99</b>	<b>4400</b>			

Fairfield Public Schools Elementary School Enrollment Projections 2026-27										
School	K	1	2	3	4	5	K-5th	PK	PK-5	
Burr	59	58	56	55	54	66	348	0	348	
Dwight	35	37	34	39	38	37	220	0	220	
Holland Hill	61	59	61	64	79	70	394	32	426	
Jennings	45	44	41	55	43	50	278	0	278	
McKinley	74	74	79	85	91	77	480	0	480	
Mill Hill	60	60	55	63	67	84	389	0	389	
North Stratfield	68	66	66	56	70	83	409	0	409	
Osborn Hill	73	75	70	76	73	88	455	0	455	
Riverfield	65	65	75	68	67	87	427	0	427	
Roger Sherman	66	66	70	58	61	62	383	0	383	
Stratfield	55	53	43	47	58	52	308	67	375	
<b>TOTAL</b>	<b>661</b>	<b>657</b>	<b>650</b>	<b>666</b>	<b>701</b>	<b>756</b>	<b>4091</b>	<b>99</b>	<b>4190</b>	

Fairfield Public Schools Elementary School Enrollment Projections 2029-30										
School	K	1	2	3	4	5	K-5th	PK	PK-5	
Burr	62	65	63	60	56	54	360	0	360	
Dwight	37	40	41	41	40	34	233	0	233	
Holland Hill	63	64	66	64	63	63	383	32	415	
Jennings	46	48	48	48	49	43	282	0	282	
McKinley	77	83	88	86	83	89	506	0	506	
Mill Hill	63	68	69	71	65	58	394	0	394	
North Stratfield	69	72	74	73	72	71	431	0	431	
Osborn Hill	75	79	81	79	73	69	456	0	456	
Riverfield	67	72	72	71	68	80	430	0	430	
Roger Sherman	69	73	71	69	67	72	421	0	421	
Stratfield	56	57	58	55	53	41	320	67	387	
<b>TOTAL</b>	<b>684</b>	<b>721</b>	<b>731</b>	<b>717</b>	<b>689</b>	<b>674</b>	<b>4216</b>	<b>99</b>	<b>4315</b>	

Fairfield Public Schools Elementary School Enrollment Projections 2032-33											
School	K	1	2	3	4	5	K-5th	PK	PK-5		
Burr	61	63	61	62	62	61	370	0	370		
Dwight	36	39	39	42	42	41	239	0	239		
Holland Hill	61	63	64	65	68	70	391	32	423		
Jennings	46	47	47	49	52	51	292	0	292		
McKinley	77	82	84	90	91	94	518	0	518		
Mill Hill	62	66	68	73	73	74	416	0	416		
North Stratfield	68	70	71	74	79	79	441	0	441		
Osborn Hill	75	77	79	82	79	79	471	0	471		
Riverfield	67	70	71	73	74	76	431	0	431		
Roger Sherman	68	72	70	71	73	72	426	0	426		
Stratfield	55	56	56	56	57	56	336	67	403		
<b>TOTAL</b>	<b>676</b>	<b>705</b>	<b>710</b>	<b>737</b>	<b>750</b>	<b>753</b>	<b>4331</b>	<b>99</b>	<b>4430</b>		

Fairfield Public Schools Elementary School Enrollment Projections 2027-28										
School	K	1	2	3	4	5	K-5th	PK	PK-5	
Burr	62	62	57	57	55	54	347	0	347	
Dwight	37	38	38	35	38	38	224	0	224	
Holland Hill	64	62	61	61	66	79	393	32	425	
Jennings	47	46	45	42	58	41	279	0	279	
McKinley	76	79	77	84	87	94	497	0	497	
Mill Hill	63	64	61	59	63	68	378	0	378	
North Stratfield	70	70	68	67	59	70	404	0	404	
Osborn Hill	75	78	75	71	74	73	446	0	446	
Riverfield	68	69	66	76	69	68	416	0	416	
Roger Sherman	69	69	65	71	59	60	393	0	393	
Stratfield	57	56	53	42	47	57	312	67	379	
<b>TOTAL</b>	<b>688</b>	<b>693</b>	<b>666</b>	<b>665</b>	<b>675</b>	<b>702</b>	<b>4089</b>	<b>99</b>	<b>4188</b>	

Fairfield Public Schools Elementary School Enrollment Projections 2030-31										
School	K	1	2	3	4	5	K-5th	PK	PK-5	
Burr	61	64	64	63	59	55	366	0	366	
Dwight	35	39	41	43	41	39	238	0	238	
Holland Hill	61	63	66	67	67	65	389	32	421	
Jennings	45	47	48	49	51	47	287	0	287	
McKinley	77	85	86	93	88	85	514	0	514	
Mill Hill	62	66	69	74	71	66	408	0	408	
North Stratfield	68	71	74	75	75	72	435	0	435	
Osborn Hill	73	81	81	82	75	73	465	0	465	
Riverfield	67	71	73	73	72	69	425	0	425	
Roger Sherman	68	73	71	71	71	67	421	0	421	
Stratfield	55	57	57	57	56	52	334	67	401	
<b>TOTAL</b>	<b>672</b>	<b>717</b>	<b>730</b>	<b>747</b>	<b>726</b>	<b>690</b>	<b>4282</b>	<b>99</b>	<b>4381</b>	

Fairfield Public Schools Elementary School Enrollment Projections 2033-34											
School	K	1	2	3	4	5	K-5th	PK	PK-5		
Burr	61	62	61	60	61	61	366	0	366		
Dwight	36	39	40	41	42	41	239	0	239		
Holland Hill	62	62	64	64	68	69	389	32	421		
Jennings	46	47	48	48	51	51	291	0	291		
McKinley	77	84	85	88	90	91	515	0	515		
Mill Hill	62	66	67	73	72	74	414	0	414		
North Stratfield	69	70	72	72	78	79	440	0	440		
Osborn Hill	75	79	79	80	79	79	471	0	471		
Riverfield	67	70	71	72	74	76	430	0	430		
Roger Sherman	68	72	69	70	73	72	424	0	424		
Stratfield	55	56	56	55	56	56	334	67	401		
<b>TOTAL</b>	<b>678</b>	<b>707</b>	<b>712</b>	<b>723</b>	<b>744</b>	<b>749</b>	<b>4313</b>	<b>99</b>	<b>4412</b>		



# Middle School Projections (Medium)

Fairfield Public Schools Middle School Enrollment Projections 2025-26				
School	6	7	8	6-8 Total
Fairfield Woods	262	230	254	<b>746</b>
Roger Ludlowe	237	258	254	<b>749</b>
Tomlinson	199	200	178	<b>577</b>
<b>TOTAL</b>	<b>698</b>	<b>688</b>	<b>686</b>	<b>2,072</b>

Fairfield Public Schools Middle School Enrollment Projections 2028-29				
School	6	7	8	6-8 Total
Fairfield Woods	268	289	248	<b>805</b>
Roger Ludlowe	240	285	243	<b>768</b>
Tomlinson	210	203	207	<b>620</b>
<b>TOTAL</b>	<b>718</b>	<b>777</b>	<b>698</b>	<b>2,193</b>

Fairfield Public Schools Middle School Enrollment Projections 2031-32				
School	6	7	8	6-8 Total
Fairfield Woods	255	246	258	<b>759</b>
Roger Ludlowe	253	257	244	<b>754</b>
Tomlinson	196	190	204	<b>590</b>
<b>TOTAL</b>	<b>704</b>	<b>693</b>	<b>706</b>	<b>2,103</b>

Fairfield Public Schools Middle School Enrollment Projections 2034-35				
School	6	7	8	6-8 Total
Fairfield Woods	276	277	271	<b>824</b>
Roger Ludlowe	276	276	269	<b>821</b>
Tomlinson	212	218	213	<b>643</b>
<b>TOTAL</b>	<b>764</b>	<b>771</b>	<b>753</b>	<b>2,288</b>

Fairfield Public Schools Middle School Enrollment Projections 2026-27				
School	6	7	8	6-8 Total
Fairfield Woods	246	257	233	<b>736</b>
Roger Ludlowe	238	241	261	<b>740</b>
Tomlinson	197	202	204	<b>603</b>
<b>TOTAL</b>	<b>681</b>	<b>700</b>	<b>698</b>	<b>2,079</b>

Fairfield Public Schools Middle School Enrollment Projections 2029-30				
School	6	7	8	6-8 Total
Fairfield Woods	255	268	291	<b>814</b>
Roger Ludlowe	240	240	289	<b>769</b>
Tomlinson	196	214	210	<b>620</b>
<b>TOTAL</b>	<b>691</b>	<b>722</b>	<b>790</b>	<b>2,203</b>

Fairfield Public Schools Middle School Enrollment Projections 2032-33				
School	6	7	8	6-8 Total
Fairfield Woods	268	255	247	<b>770</b>
Roger Ludlowe	266	253	261	<b>780</b>
Tomlinson	206	199	195	<b>600</b>
<b>TOTAL</b>	<b>740</b>	<b>707</b>	<b>703</b>	<b>2,150</b>

Fairfield Public Schools Middle School Enrollment Projections 2027-28				
School	6	7	8	6-8 Total
Fairfield Woods	289	246	259	<b>794</b>
Roger Ludlowe	284	239	245	<b>768</b>
Tomlinson	199	200	208	<b>607</b>
<b>TOTAL</b>	<b>772</b>	<b>685</b>	<b>712</b>	<b>2,169</b>

Fairfield Public Schools Middle School Enrollment Projections 2030-31				
School	6	7	8	6-8 Total
Fairfield Woods	246	256	271	<b>773</b>
Roger Ludlowe	257	241	244	<b>742</b>
Tomlinson	187	199	220	<b>606</b>
<b>TOTAL</b>	<b>690</b>	<b>696</b>	<b>735</b>	<b>2,121</b>

Fairfield Public Schools Middle School Enrollment Projections 2033-34				
School	6	7	8	6-8 Total
Fairfield Woods	277	268	258	<b>803</b>
Roger Ludlowe	276	266	256	<b>798</b>
Tomlinson	215	209	203	<b>627</b>
<b>TOTAL</b>	<b>768</b>	<b>743</b>	<b>717</b>	<b>2,228</b>



# High School Projections (Medium)

Fairfield Public Schools High School Enrollment Projections 2025-26					
School	9	10	11	12	9-12 Total
Fairfield Warde	312	308	306	355	1,281
Fairfield Ludlowe	325	317	336	354	1,332
Alternative HS + Outplaced	8	15	29	70	122
<b>TOTAL</b>	<b>645</b>	<b>640</b>	<b>671</b>	<b>779</b>	<b>2,735</b>

Fairfield Public Schools High School Enrollment Projections 2028-29					
School	9	10	11	12	9-12 Total
Fairfield Warde	321	301	276	299	1,197
Fairfield Ludlowe	329	329	326	309	1,293
Alternative HS + Outplaced	8	15	29	70	122
<b>TOTAL</b>	<b>658</b>	<b>645</b>	<b>631</b>	<b>678</b>	<b>2,612</b>

Fairfield Public Schools High School Enrollment Projections 2031-32					
School	9	10	11	12	9-12 Total
Fairfield Warde	335	330	302	308	1,275
Fairfield Ludlowe	333	382	309	310	1,334
Alternative HS + Outplaced	8	15	29	70	122
<b>TOTAL</b>	<b>676</b>	<b>727</b>	<b>640</b>	<b>688</b>	<b>2,731</b>

Fairfield Public Schools High School Enrollment Projections 2034-35					
School	9	10	11	12	9-12 Total
Fairfield Warde	313	293	301	319	1,226
Fairfield Ludlowe	338	336	313	314	1,301
Alternative HS + Outplaced	8	15	29	70	122
<b>TOTAL</b>	<b>659</b>	<b>644</b>	<b>643</b>	<b>703</b>	<b>2,649</b>

Fairfield Public Schools High School Enrollment Projections 2026-27					
School	9	10	11	12	9-12 Total
Fairfield Warde	287	304	303	304	1,198
Fairfield Ludlowe	335	324	306	330	1,295
Alternative HS + Outplaced	8	15	29	70	122
<b>TOTAL</b>	<b>630</b>	<b>643</b>	<b>638</b>	<b>704</b>	<b>2,615</b>

Fairfield Public Schools High School Enrollment Projections 2029-30					
School	9	10	11	12	9-12 Total
Fairfield Warde	312	314	295	273	1,194
Fairfield Ludlowe	323	328	319	320	1,290
Alternative HS + Outplaced	8	15	29	70	122
<b>TOTAL</b>	<b>643</b>	<b>657</b>	<b>643</b>	<b>663</b>	<b>2,606</b>

Fairfield Public Schools High School Enrollment Projections 2032-33					
School	9	10	11	12	9-12 Total
Fairfield Warde	314	328	326	299	1,267
Fairfield Ludlowe	327	331	368	303	1,329
Alternative HS + Outplaced	8	15	29	70	122
<b>TOTAL</b>	<b>649</b>	<b>674</b>	<b>723</b>	<b>672</b>	<b>2,718</b>

Fairfield Public Schools High School Enrollment Projections 2027-28					
School	9	10	11	12	9-12 Total
Fairfield Warde	304	282	300	301	1,187
Fairfield Ludlowe	331	333	313	301	1,278
Alternative HS + Outplaced	8	15	29	70	122
<b>TOTAL</b>	<b>643</b>	<b>630</b>	<b>642</b>	<b>672</b>	<b>2,587</b>

Fairfield Public Schools High School Enrollment Projections 2030-31					
School	9	10	11	12	9-12 Total
Fairfield Warde	337	307	311	294	1,249
Fairfield Ludlowe	384	322	316	313	1,335
Alternative HS + Outplaced	8	15	29	70	122
<b>TOTAL</b>	<b>729</b>	<b>644</b>	<b>656</b>	<b>677</b>	<b>2,706</b>

Fairfield Public Schools High School Enrollment Projections 2033-34					
School	9	10	11	12	9-12 Total
Fairfield Warde	300	307	322	325	1,254
Fairfield Ludlowe	338	325	319	364	1,346
Alternative HS + Outplaced	8	15	29	70	122
<b>TOTAL</b>	<b>646</b>	<b>647</b>	<b>670</b>	<b>759</b>	<b>2,722</b>