

LEA Name : Elizabeth Forward SD  
Address : 401 Rock Run Road  
Elizabeth , PA 15037

County : Allegheny  
AUN Number : 103023153  
LEA Type : SD

## Annual Financial Report Accuracy Certification Statement


For Fiscal Year Ending  
6/30/2024

Pennsylvania Department of Education  
&  
Office of Comptroller Operations


PDE-2056: Intermediate Unit


PDE-2057: School District, AVTS/CTC, Charter School,  
and Special Program Jointure

**CERTIFICATION: By signing this page I agree that the electronic data submitted is a complete and accurate statement of the financial operations and status of the local education agency for the fiscal year. It has been prepared in accordance with generally accepted accounting principles and established Commonwealth of PA reporting guidelines.**

  
\_\_\_\_\_  
Chief School Administrator Signature

  
\_\_\_\_\_  
Date

  
\_\_\_\_\_  
Board Secretary Signature

  
\_\_\_\_\_  
Date

Albert J Ragan  
\_\_\_\_\_  
Contact Person

(412)896-2308      Ext :  
\_\_\_\_\_  
Contact Person Telephone Number

aragan@efsd.net  
\_\_\_\_\_  
Contact Person E-mail Address

\_\_\_\_\_  
Contact Person Fax Number

**Audit Certification**  
**Annual Financial Report:**  
For Fiscal Year Ending **6/30/2024**  
**(Pursuant to PA School Code Section 218(b))**

LEA Name : Elizabeth Forward SD  
AUN Number : 103023153  
County : Allegheny

<b>Audit Certification Due:</b> 12/31/2024
---

This certification is applicable to the Annual Financial Report data submitted through the Consolidated Financial Reporting System (CFRS).


CERTIFICATION: By signing this page I agree that the financial statements of the school have been properly audited as noted above pursuant to Article XXIV, and in the auditor's professional opinion, the Annual Financial Report (PDE-2057) submitted through CFRS is materially consistent with the audited financial statements.

Chief School Administrator

Board Secretary

  
\_\_\_\_\_  
Signature

11/20/24  
\_\_\_\_\_  
Date

  
\_\_\_\_\_  
Signature

11/20/24  
\_\_\_\_\_  
Date

Albert J Ragan

(412)896-2308

Ext :

\_\_\_\_\_  
Contact Person

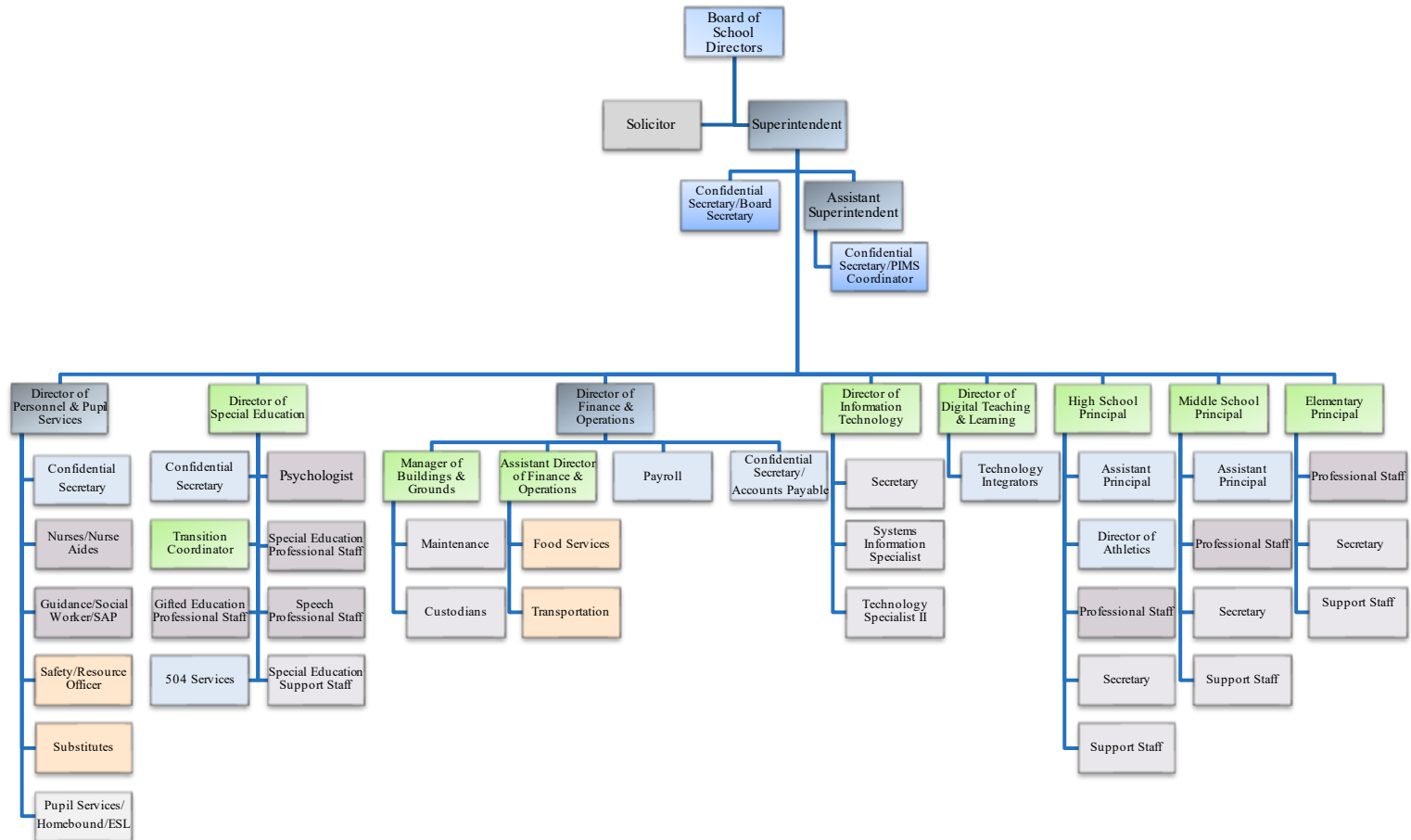
\_\_\_\_\_  
Contact Person Telephone Number

aragan@efsd.net

\_\_\_\_\_  
Contact Person E-mail Address

\_\_\_\_\_  
Contact Person Fax Number

# ADMINISTRATIVE ORGANIZATIONAL CHART 2023-2024



## ELIZABETH FORWARD



Book	Policy Manual
Section	600 Finances
Title	GASB Statement 34
Code	622
Status	Active
Adopted	October 28, 2009

### **Purpose**

The Board recognizes the need to implement the required accounting and financial reporting standards stipulated by the Pennsylvania Department of Education. [\[1\]](#)

The primary objectives of implementing the GASB Statement 34 are to assure compliance with state requirements, and properly account for both the financial and economic resources of the district.

### **Authority**

Participation of the school district in any such activity shall be in accordance with Board policy. [\[2\]](#)

### **Delegation of Responsibility**

The responsibility to coordinate the compilation and preparation of all information necessary to implement this policy is delegated to the Business Manager.

The designated individual shall be responsible for implementing the necessary procedures to establish and maintain a fixed asset inventory, including depreciation schedules. Depreciation shall be computed on a straight-line basis over the useful lives of the assets, using an averaging convention. Normal maintenance and repairs shall be charged to expense as incurred; major renewals and betterments that materially extend the life or increase the value of the asset shall be capitalized. A schedule of accumulated depreciation shall be consistent from year to year. The basis for depreciation, including groups of assets and useful lives, shall be in writing and submitted for review to the Board.

The Business Manager shall prepare the required Management Discussion and Analysis (MD&A). The MD&A shall be in the form required by GASB Statement 34 and shall be submitted to the Board for approval, prior to publication.

Prior to submission of the MD&A for Board approval, the district's independent auditors shall review the MD&A, in accordance with SAS No. 52, "Required Supplementary Information".

### **Guidelines**

In order to associate debt with acquired assets and to avoid net asset deficits, any asset that has been acquired with debt proceeds shall be capitalized, regardless of the cost of the asset. The asset life of these assets shall be considered relative to the time of the respective debt amortizations.

For all other assets not acquired by debt proceeds, the dollar value of any single item for inclusion in the fixed assets accounts shall be not less than \$4,000.

The capitalization threshold shall be set at a level that will capture at least eighty percent (80%) of all fixed assets.

The assets listed below do not normally individually meet capitalization threshold criteria:

1. Library books.
2. Classroom texts.
3. Computer equipment.
4. Classroom furniture.

These asset category costs shall be capitalized and depreciated as groups when that group's acquisition cost exceeds the capitalization threshold in any given fiscal year.

For group asset depreciation purposes, the estimated useful life of the group may be based on the weighted average or simple average of the useful life of individual items, or on an assessment of the life of the group as a whole. Periodically, the district shall review the estimated life of groups of assets and adjust the remaining depreciation life of the group.

Assets that fall below the capitalization threshold for GASB 34 reporting purposes may still be significant for insurance, warranty service, and obsolescence/ replacement policy tracking purposes. The district may record and maintain these non-GASB 34 asset inventories in subsidiary ledgers.

Legal [1. 24 P.S. 613](#)

[2. 24 P.S. 218](#)

<u>Val Number</u>	<u>Description</u>	<u>Justification</u>
30116	Revenue Detail: A large amount has been reported as Earnings on Investments in Fund 32, account 6500, which should only include interest and/or dividend earnings. Correct or provide a brief explanation of the revenue reported.  Revenue Detail 6500, Fund 32: \$136,637.19	This all interest and dividends earned on the cash balance held in Fund 32 for the 2023-24 school year. There is nothing else in that account.
41150	Expenditure Detail - There is an entry in account 5150-990 which should only include bond discounts. Please verify that only bond discounts are being reported within this code. Note: Underwriter's discounts are not bond discounts and should be recorded as a current expenditure in account 2390-810.  Expenditure 5150-990, Fund 40: \$118,019.00	This only includes the original bond issue discount.
50430	SESS - 2160 Social Work Services: SESS Schedule amounts for Special Education vary from prior year by 40% or more. Correct the data or enter a justification.  SESS Schedule 2160: \$2,382.59 Prior Year SESS Schedule 2160: \$12,569.74	The vendors who provide these services were unable to find staffing for most of the 23-24 school year. For 24-25 the district has contracted with a new vendor who will hopefully be able to staff their services.

Amounts Expressed in Whole Dollars	<u>General Fund</u> <u>(10)</u>	<u>Student Sponsored</u> <u>Activity Fund</u> <u>(21)</u>	<u>Public Purpose Trust</u> <u>(27)</u>	<u>Other Compt Approved</u> <u>(28)</u>	<u>Athletic / Activity</u> <u>(29)</u>
<b>Assets And Deferred Outflows Of Resources</b>					
<b>Assets</b>					
0100 Cash and Cash Equivalents	20,618,126				
0110 Investments					
0120 Taxes Receivable	5,480,290				
0130 Due From Other Funds					
0141 Due From Other Governments	304,695				
0142 State Revenue Receivable	2,216,904				
0143 Federal Revenue Receivable	878,539				
0145 Other Intergovernmental Revenue Receivable					
0146 Due from Primary Government					
0147 Due from Component Unit					
0150 Other Receivables	64,174				
0170 Inventories					
0180 Prepaid Expenses (Expenditures)	605,013				
0190 Other Current Assets					
<b>Total Assets</b>	<b>\$30,167,741</b>				
0910 Deferred Outflows of Resources					
<b>Total Assets And Deferred Outflows Of Resources</b>	<b>\$30,167,741</b>				

Amounts Expressed in Whole Dollars	<u>Capital Reserve (690.</u> <u>1850)</u> <u>(31)</u>	<u>Capital Reserve (1431)</u> <u>(32)</u>	<u>Other Capital Projects</u> <u>Fund</u> <u>(39)</u>	<u>Debt Service</u> <u>(40)</u>	<u>Permanent</u> <u>(90)</u>
<b>Assets And Deferred Outflows Of Resources</b>					
<b>Assets</b>					
0100 Cash and Cash Equivalents		1,480,584	10,544,634		
0110 Investments				2,142,057	
0120 Taxes Receivable					
0130 Due From Other Funds					
0141 Due From Other Governments					
0142 State Revenue Receivable					
0143 Federal Revenue Receivable					
0145 Other Intergovernmental Revenue Receivable					
0146 Due from Primary Government					
0147 Due from Component Unit					
0150 Other Receivables					
0170 Inventories					
0180 Prepaid Expenses (Expenditures)					
0190 Other Current Assets					
<b>Total Assets</b>		<b>\$1,480,584</b>	<b>\$10,544,634</b>	<b>\$2,142,057</b>	
0910 Deferred Outflows of Resources					
<b>Total Assets And Deferred Outflows Of Resources</b>		<b>\$1,480,584</b>	<b>\$10,544,634</b>	<b>\$2,142,057</b>	



Amounts Expressed in Whole Dollars

**Total Governmental Funds**

**Assets And Deferred Outflows Of Resources**

<b>Assets</b>	
0100 Cash and Cash Equivalents	32,643,344
0110 Investments	2,142,057
0120 Taxes Receivable	5,480,290
0130 Due From Other Funds	
0141 Due From Other Governments	304,695
0142 State Revenue Receivable	2,216,904
0143 Federal Revenue Receivable	878,539
0145 Other Intergovernmental Revenue Receivable	
0146 Due from Primary Government	
0147 Due from Component Unit	
0150 Other Receivables	64,174
0170 Inventories	
0180 Prepaid Expenses (Expenditures)	605,013
0190 Other Current Assets	
<b>Total Assets</b>	<b>\$44,335,016</b>
0910 Deferred Outflows of Resources	
<b>Total Assets And Deferred Outflows Of Resources</b>	<b>\$44,335,016</b>

Amounts Expressed in Whole Dollars

	<u>General Fund</u> <u>(10)</u>	<u>Student Sponsored</u> <u>Activity Fund</u> <u>(21)</u>	<u>Public Purpose Trust</u> <u>(27)</u>	<u>Other Compt Approved</u> <u>(28)</u>	<u>Athletic / Activity</u> <u>(29)</u>
<b>Liabilities And Deferred Inflows Of Resources And Fund Balances</b>					
<b>Liabilities</b>					
0400 Due to Other Funds					
0411 Due to Other Governments					
0412 Due to Primary Government					
0413 Due to Component Unit					
0420 Accounts Payable	259,302				
0430 Contracts Payable					
0440 Current Portion of Long-Term Debt					
0450 Short-Term Payables					
0461 Accrued Salaries and Benefits	2,960,198				
0462 Payroll Deductions and Withholding	2,116,730				
0480 Unearned Revenues	13,746,665				
0490 Other Current Liabilities	18,919				
<b>Total Liabilities</b>	<b>\$19,101,814</b>				
0950 Deferred Inflows of Resources					
<b>Fund Balances</b>					
0810 Nonspendable Fund Balance	605,013				
0820 Restricted Fund Balance					
0830 Committed Fund Balance					
0840 Assigned Fund Balance	7,200,000				
0850 Unassigned Fund Balance	3,260,914				
<b>Total Fund Balances</b>	<b>\$11,065,927</b>				
<b>Total Liabilities, Deferred Inflows Of Resources And Fund Balances</b>	<b>\$30,167,741</b>				

Amounts Expressed in Whole Dollars

<u>Capital Reserve (690.</u>	<u>Capital Reserve (1431)</u>	<u>Other Capital Projects</u>	<u>Debt Service</u>	<u>Permanent</u>
<u>1850)</u>	<u>(32)</u>	<u>Fund</u>	<u>(40)</u>	<u>(90)</u>
<u>(31)</u>		<u>(39)</u>		

**Liabilities And Deferred Inflows Of Resources And Fund Balances**

**Liabilities**

0400 Due to Other Funds				
0411 Due to Other Governments				
0412 Due to Primary Government				
0413 Due to Component Unit				
0420 Accounts Payable		83,681		
0430 Contracts Payable				
0440 Current Portion of Long-Term Debt				
0450 Short-Term Payables				
0461 Accrued Salaries and Benefits				
0462 Payroll Deductions and Withholding				
0480 Unearned Revenues			350,000	
0490 Other Current Liabilities				

<b>Total Liabilities</b>	<b>\$83,681</b>	<b>\$350,000</b>	
--------------------------	-----------------	------------------	--

0950 Deferred Inflows of Resources

**Fund Balances**

0810 Nonspendable Fund Balance			
0820 Restricted Fund Balance	1,396,903	10,194,634	2,142,057
0830 Committed Fund Balance			
0840 Assigned Fund Balance			
0850 Unassigned Fund Balance			

<b>Total Fund Balances</b>	<b>\$1,396,903</b>	<b>\$10,194,634</b>	<b>\$2,142,057</b>
----------------------------	--------------------	---------------------	--------------------

<b>Total Liabilities, Deferred Inflows Of Resources And Fund Balances</b>	<b>\$1,480,584</b>	<b>\$10,544,634</b>	<b>\$2,142,057</b>
---	--------------------	---------------------	--------------------

Amounts Expressed in Whole Dollars

**Total Governmental Funds**

**Liabilities And Deferred Inflows Of Resources And Fund Balances**

**Liabilities**

0400 Due to Other Funds	
0411 Due to Other Governments	
0412 Due to Primary Government	
0413 Due to Component Unit	
0420 Accounts Payable	342,983
0430 Contracts Payable	
0440 Current Portion of Long-Term Debt	
0450 Short-Term Payables	
0461 Accrued Salaries and Benefits	2,960,198
0462 Payroll Deductions and Withholding	2,116,730
0480 Unearned Revenues	14,096,665
0490 Other Current Liabilities	18,919

**Total Liabilities \$19,535,495**

0950 Deferred Inflows of Resources

**Fund Balances**

0810 Nonspendable Fund Balance	605,013
0820 Restricted Fund Balance	13,733,594
0830 Committed Fund Balance	
0840 Assigned Fund Balance	7,200,000
0850 Unassigned Fund Balance	3,260,914

**Total Fund Balances \$24,799,521**

**Total Liabilities, Deferred Inflows Of Resources And Fund Balances \$44,335,016**

Amounts Expressed in Whole Dollars	<u>General Fund</u> <u>(10)</u>	<u>Student Sponsored</u> <u>Activity Fund</u> <u>(21)</u>	<u>Public Purpose Trust</u> <u>(27)</u>	<u>Other Compt Approved</u> <u>(28)</u>	<u>Athletic / Activity</u> <u>(29)</u>
<b>Revenues</b>					
6000 Revenue from Local Sources	27,191,928				
7000 Revenue from State Sources	23,380,086				
8000 Revenue from Federal Sources	1,394,729				
<b>Total Revenues</b>	<b>\$51,966,743</b>				
<b>Expenditures</b>					
1000 Instruction	28,359,485				
2000 Support Services	16,932,788				
3000 Operation of Non-Instructional Services	1,562,324				
4000 Facilities Acquisition, Construction and Improvement Services	380,661				
5110 Debt Service					
5130 Refund of Prior Year Revenues / Receipts	77,459				
5140 Leases and Other Right-to-Use Arrangements					
<b>Total Expenditures</b>	<b>\$47,312,717</b>				
<b>Excess (Deficiency) Of Revenues Over Expenditures</b>	<b>\$4,654,026</b>				
<b>Other Financing Sources (Uses)</b>					
9110 Face Value of Bonds Issued					
9120 Proceeds from Refunding of Bonds					
9130 Bond Premiums					
9200 Proceeds from Extended Term Financing, Leases, and Other Right-to-Use Arrangements					
9300 Interfund Transfers - IN	2,954				
9400 Sale of or Compensation for Loss of Fixed Assets	239,817				
9710 Transfers from Component Units					
9720 Transfers from Primary Governments					
9910 Other Financing Sources Not Listed in the 9000 Series					
9990 Insurance Recoveries	537,878				
5120 Debt Service – Refunded Bonds					
5150 Bond Discounts					
5200 Interfund Transfers – Out	4,015,937				
5300 Transfers Out to Component Units/Primary Governments					
<b>Total Other Financing Sources (Uses)</b>	<b>(\$3,235,288)</b>				

Amounts Expressed in Whole Dollars	<u>Capital Reserve (690.1850)</u> <u>(31)</u>	<u>Capital Reserve (1431)</u> <u>(32)</u>	<u>Other Capital Projects</u> <u>Fund</u> <u>(39)</u>	<u>Debt Service</u> <u>(40)</u>	<u>Permanent</u> <u>(90)</u>
<b>Revenues</b>					
6000 Revenue from Local Sources		136,686	258,567		
7000 Revenue from State Sources					
8000 Revenue from Federal Sources					
<b>Total Revenues</b>		<b>\$136,686</b>	<b>\$258,567</b>		
<b>Expenditures</b>					
1000 Instruction					
2000 Support Services		8,836	240,624	175,682	
3000 Operation of Non-Instructional Services					
4000 Facilities Acquisition, Construction and Improvement Services		2,449,065	49,607		
5110 Debt Service				3,237,648	
5130 Refund of Prior Year Revenues / Receipts				8,828	
5140 Leases and Other Right-to-Use Arrangements					
<b>Total Expenditures</b>		<b>\$2,457,901</b>	<b>\$290,231</b>	<b>\$3,422,158</b>	
<b>Excess (Deficiency) Of Revenues Over Expenditures</b>		<b>(\$2,321,215)</b>	<b>(\$31,664)</b>	<b>(\$3,422,158)</b>	
<b>Other Financing Sources (Uses)</b>					
9110 Face Value of Bonds Issued				10,000,000	
9120 Proceeds from Refunding of Bonds					
9130 Bond Premiums					
9200 Proceeds from Extended Term Financing, Leases, and Other Right-to-Use Arrangements					
9300 Interfund Transfers - IN		257,000	10,226,298	3,237,648	
9400 Sale of or Compensation for Loss of Fixed Assets					
9710 Transfers from Component Units					
9720 Transfers from Primary Governments					
9910 Other Financing Sources Not Listed in the 9000 Series					
9990 Insurance Recoveries					
5120 Debt Service – Refunded Bonds					
5150 Bond Discounts				118,019	
5200 Interfund Transfers – Out				9,706,297	
5300 Transfers Out to Component Units/Primary Governments					
<b>Total Other Financing Sources (Uses)</b>		<b>\$257,000</b>	<b>\$10,226,298</b>	<b>\$3,413,332</b>	

Amounts Expressed in Whole Dollars	<u>Total Governmental Funds</u>
<b>Revenues</b>	
6000 Revenue from Local Sources	27,587,181
7000 Revenue from State Sources	23,380,086
8000 Revenue from Federal Sources	1,394,729
<b>Total Revenues</b>	<b>\$52,361,996</b>
<b>Expenditures</b>	
1000 Instruction	28,359,485
2000 Support Services	17,357,930
3000 Operation of Non-Instructional Services	1,562,324
4000 Facilities Acquisition, Construction and Improvement Services	2,879,333
5110 Debt Service	3,237,648
5130 Refund of Prior Year Revenues / Receipts	86,287
5140 Leases and Other Right-to-Use Arrangements	
<b>Total Expenditures</b>	<b>\$53,483,007</b>
<b>Excess (Deficiency) Of Revenues Over Expenditures</b>	<b>(\$1,121,011)</b>
<b>Other Financing Sources (Uses)</b>	
9110 Face Value of Bonds Issued	10,000,000
9120 Proceeds from Refunding of Bonds	
9130 Bond Premiums	
9200 Proceeds from Extended Term Financing, Leases, and Other Right-to-Use Arrangements	
9300 Interfund Transfers - IN	13,723,900
9400 Sale of or Compensation for Loss of Fixed Assets	239,817
9710 Transfers from Component Units	
9720 Transfers from Primary Governments	
9910 Other Financing Sources Not Listed in the 9000 Series	
9990 Insurance Recoveries	537,878
5120 Debt Service – Refunded Bonds	
5150 Bond Discounts	118,019
5200 Interfund Transfers – Out	13,722,234
5300 Transfers Out to Component Units/Primary Governments	
<b>Total Other Financing Sources (Uses)</b>	<b>\$10,661,342</b>

Amounts Expressed in Whole Dollars	<u>General Fund</u> <u>(10)</u>	<u>Student Sponsored</u> <u>Activity Fund</u> <u>(21)</u>	<u>Public Purpose Trust</u> <u>(27)</u>	<u>Other Compt Approved</u> <u>(28)</u>	<u>Athletic / Activity</u> <u>(29)</u>
<b>Special And Extraordinary Items</b>					
9920 Special Items – Gains					
9930 Extraordinary Items – Gains					
5520 Special Items – Losses					
5530 Extraordinary Items – Losses					
<b>Net Change In Fund Balances</b>	<b>\$1,418,738</b>				
<b>Fund Balance</b>					
0001 Fund Balance - Beginning of Fiscal Year	9,647,189				
<b>Fund Balance - End Of Year</b>	<b>\$11,065,927</b>				



Amounts Expressed in Whole Dollars	<u>Capital Reserve (690.1850)</u> <u>(31)</u>	<u>Capital Reserve (1431)</u> <u>(32)</u>	<u>Other Capital Projects</u> <u>Fund</u> <u>(39)</u>	<u>Debt Service</u> <u>(40)</u>	<u>Permanent</u> <u>(90)</u>
<b>Special And Extraordinary Items</b>					
9920 Special Items – Gains					
9930 Extraordinary Items – Gains					
5520 Special Items – Losses					
5530 Extraordinary Items – Losses					
<b>Net Change In Fund Balances</b>		<b>(\$2,064,215)</b>	<b>\$10,194,634</b>	<b>(\$8,826)</b>	
<b>Fund Balance</b>					
0001 Fund Balance - Beginning of Fiscal Year		3,461,118		2,150,883	
<b>Fund Balance - End Of Year</b>		<b>\$1,396,903</b>	<b>\$10,194,634</b>	<b>\$2,142,057</b>	

Amounts Expressed in Whole Dollars	<u>Total Governmental Funds</u>
<b>Special And Extraordinary Items</b>	
9920 Special Items – Gains	
9930 Extraordinary Items – Gains	
5520 Special Items – Losses	
5530 Extraordinary Items – Losses	
<b>Net Change In Fund Balances</b>	<b>\$9,540,331</b>
<b>Fund Balance</b>	
0001 Fund Balance - Beginning of Fiscal Year	15,259,190
<b>Fund Balance - End Of Year</b>	<b>\$24,799,521</b>

Amounts Expressed in Whole Dollars	<u>Food Service</u> <u>(51)</u>	<u>Child Care</u> <u>Operations</u> <u>(52)</u>	<u>Other Enterprise</u> <u>(58)</u>	<u>TOTAL</u>	<u>Internal Service</u> <u>(60)</u>
<b>Assets And Deferred Outflows Of Resources</b>					
<b>Current Assets</b>					
0100 Cash and Cash Equivalents	807,518			807,518	
0110 Investments					
0130 Due From Other Funds					
0141 Due From Other Governments					
0142 State Revenue Receivable	19,353			19,353	
0143 Federal Revenue Receivable	90,504			90,504	
0146 Due from Primary Government					
0147 Due from Component Unit					
0150 Other Receivables					
0170 Inventories	30,153			30,153	
0180 Prepaid Expenses (Expenditures)					
0190 Other Current Assets					
<b>Total Current Assets</b>	<b>\$947,528</b>			<b>\$947,528</b>	
<b>Noncurrent Assets</b>					
0211 Land					
0212 Site Improvements (Net)					
0220 Buildings and Building Improvements (Net)					
0230 Tangible Property and Intangible Right-To-Use Assets (Net)	52,072			52,072	
0250 Construction in Progress					
0260 Long Term Prepayments					
0290 Other Noncurrent Assets					
<b>Total Noncurrent Assets</b>	<b>\$52,072</b>			<b>\$52,072</b>	
0910 Deferred Outflows of Resources					
<b>Total Assets And Deferred Outflows Of Resources</b>	<b>\$999,600</b>			<b>\$999,600</b>	

Amounts Expressed in Whole Dollars	<u>Food Service</u> <u>(51)</u>	<u>Child Care</u> <u>Operations</u> <u>(52)</u>	<u>Other Enterprise</u> <u>(58)</u>	<u>TOTAL</u>	<u>Internal Service</u> <u>(60)</u>
<b>Liabilities And Deferred Inflows Of Resources And Net Position</b>					
<b>Current Liabilities</b>					
0400 Due to Other Funds					
0411 Due to Other Governments					
0413 Due to Component Unit					
0420 Accounts Payable	41,751			41,751	
0430 Contracts Payable					
0440 Current Portion of Long-Term Debt					
0450 Short-Term Payables					
0461 Accrued Salaries and Benefits					
0462 Payroll Deductions and Withholding					
0480 Unearned Revenues					
0490 Other Current Liabilities					
<b>Total Current Liabilities</b>	<b>\$41,751</b>			<b>\$41,751</b>	
<b>Noncurrent Liabilities</b>					
0510 Bonds Payable					
0520 Extended-Term Financing Agreements Payable					
0530 Lease and Other Right-To-Use Obligations					
0540 Accumulated Compensated Absences					
0550 Authority Lease Obligations					
0560 Other Post-Employment Benefits (OPEB)					
0570 Net Pension Liability					
0599 Other Noncurrent Liabilities					
<b>Total Noncurrent Liabilities</b>					
<b>Total Liabilities</b>	<b>\$41,751</b>			<b>\$41,751</b>	
0950 Deferred Inflows of Resources					
<b>Net Position</b>					
0791 Net Investment in Capital Assets	52,072			52,072	
0008 Restricted Net Position (0792 – 0798)					
0799 Unrestricted Net Position	905,777			905,777	
<b>Total Net Position</b>	<b>\$957,849</b>			<b>\$957,849</b>	
<b>Total Liabilities And Deferred Inflows Of Resources And Net Position</b>	<b>\$999,600</b>			<b>\$999,600</b>	

Amounts Expressed in Whole Dollars	<u>Food Service</u> <u>(51)</u>	<u>Child Care Operations</u> <u>(52)</u>	<u>Other Enterprise</u> <u>(58)</u>	<u>TOTAL</u>	<u>Internal Service</u> <u>(60)</u>
<b>Operating Revenues</b>					
6600 Food Service Revenue	369,967			369,967	
0071 Charges for Services					
0072 Other Operating Revenue					
<b>Total Operating Revenues</b>	<b>\$369,967</b>			<b>\$369,967</b>	
<b>Operating Expenses</b>					
100 Personnel Services – Salaries					
200 Personnel Services – Employee Benefits					
300 Purchased Professional and Technical Services					
400 Purchased Property Services					
500 Other Purchased Services	1,010,531			1,010,531	
600 Supplies	197,047			197,047	
740 Depreciation	12,238			12,238	
770 Amortization Expense					
810 Dues and Fees	698			698	
880 Refunds of Prior Years' Receipts					
890 Miscellaneous Expenditures					
<b>Total Operating Expenses</b>	<b>\$1,220,514</b>			<b>\$1,220,514</b>	
<b>Operating Income (Loss)</b>	<b>(\$850,547)</b>			<b>(\$850,547)</b>	
<b>Non Operating Revenues (Expenses)</b>					
6500 Earnings on Investments		37,121		37,121	
6830 Federal Revenue from Intermediary Sources					
6920 Contributions and Donations from Private Sources					
6930 Gains or Losses on Sale of Fixed Assets					
6991 Refunds of a Prior Year Expenditure					
7000 Revenue from State Sources	133,403			133,403	
8000 Revenue from Federal Sources	844,766			844,766	
9990 Insurance Recoveries					
820 Claims and Judgments Against the LEA					
830 Interest					
<b>TOTAL Non Operating Revenues (Expenses)</b>		<b>\$1,015,290</b>		<b>\$1,015,290</b>	
<b>Income (Loss) Before Contributions And Transfers</b>		<b>\$164,743</b>		<b>\$164,743</b>	

Amounts Expressed in Whole Dollars	<u>Food Service</u> <u>(51)</u>	<u>Child Care Operations</u> <u>(52)</u>	<u>Other Enterprise</u> <u>(58)</u>	<u>TOTAL</u>	<u>Internal Service</u> <u>(60)</u>
<b>Contributions, Transfers, and Special and Extraordinary Items</b>					
5200 Interfund Transfers – Out	2,954			2,954	
5300 Transfers Out to Component Units/Primary Governments					
5520 Special Items – Losses					
5530 Extraordinary Items – Losses					
9300 Interfund Transfers - IN	1,288			1,288	
9500 Capital Contributions					
9700 Transfers IN From Component Units/Primary Governments					
9920 Special Items – Gains					
9930 Extraordinary Items – Gains					
<b>Change In Net Position</b>	<b>\$163,077</b>			<b>\$163,077</b>	
0002 Net Position - Beginning of Fiscal Year	794,772			794,772	
0003 Accounting Changes / Residual Equity Transfers					
<b>Net Position - End Of Year</b>	<b>\$957,849</b>			<b>\$957,849</b>	

Amounts Expressed in Whole Dollars	<u>Food Service</u> <u>(51)</u>	<u>Child Care Operations</u> <u>(52)</u>	<u>Other Enterprise</u> <u>(58)</u>	<u>TOTAL</u>	<u>Internal Service(60)</u>
<b>Cash Flows From Operating Activities</b>					
0011 Cash Receipts From Users	369,967			369,967	
0012 Cash Receipts From Assessments Made to Other Funds					
0013 Cash Receipts From Earnings on Investments					
0014 Cash Receipts From Other Operating Revenue					
0015 Cash Payments To Employees For Services					
0016 Cash Payments For Insurance Claims					
0017 Cash Payments To Suppliers For Goods and Services	1,095,061			1,095,061	
0018 Cash Payments For Other Operating Expenses					
<b>Net Cash Provided By (Used For) Operating Activities</b>	<b>(\$725,094)</b>			<b>(\$725,094)</b>	
<b>Cash Flows From Non-Capital Financing Activities</b>					
0021 Receipts From Local Sources - 6000					
0022 Receipts From State Sources - 7000	114,050			114,050	
0023 Receipts From Federal Sources -8000	649,104			649,104	
0024 Notes and Loans Received (Repaid)					
0025 Interest Paid on Notes/Loans - 5100-830					
0026 Operating Transfers In (Out)/Residual Equity Trans					
0027 Operating Transfers In (Out) Primary Government / Comp Unit	(1,666)			(1,666)	
0028 Receipts From Refund of Prior Year Expenditures - 6991					
0029 Special and Extraordinary Gains (losses)					
0030 Receipts from Insurance Recoveries -9990					
<b>Net Cash Prov By (Used for) Non-Capital Financing Activities</b>	<b>\$761,488</b>			<b>\$761,488</b>	
<b>Cash Flows From Capital and Related Financing Activities</b>					
0031 Payments For Fac Acq, Const, and Imp - 4000					
0032 Proceeds from Disposal of Capital Assets					
0033 Proceeds From Extended Term Financing - 9200					
0034 Principal Paid on Financing Agreements					
0035 Interest Paid on Financing Agreements - 5100-830					
0036 (Inc) Dec in Contributed Capital					
<b>Net Cash Prov By (Used for) Capital and Related Financing Activities</b>					
<b>Cash Flows From Investing Activities</b>					
0041 Earnings on Investments - 6500	37,121			37,121	
0042 Purchase of Inv Securities / Deposits to Inv Pools					
0043 Receipts From Investment Pool Withdrawals					
0044 Proceeds from Sale and Maturity of Inv Securities					

LEA : 103023153 Elizabeth Forward SD

Printed 11/21/2024 2:46:31 PM

0045 Loans Received (Paid)

<b>Net Cash Prov By (Used for) Investing Activities</b>	<b>\$37,121</b>	<b>\$37,121</b>
---	-----------------	-----------------



	<u>Food Service</u> <u>(51)</u>	<u>Child Care Operations</u> <u>(52)</u>	<u>Other Enterprise</u> <u>(58)</u>	<u>TOTAL</u>	<u>Internal Service</u> <u>(60)</u>
<b>Net Increase (Decrease) in Cash Flows</b>	<b>73,515</b>			<b>73,515</b>	
0004 Cash and Cash Equivalents Beginning of Year	734,003			734,003	
<b>Cash and Cash Equivalents at Year End</b>	<b>\$807,518</b>			<b>\$807,518</b>	

**Reconciliation of Operating Income (Loss) To Net Cash Provided by (Used For) Operating Activities**

0005 Operating Income (Loss) per REP	(850,547)			(850,547)	
<b>Adjustments</b>					
0051 Depreciation and Net Amortization	12,238			12,238	
0052 Provision for Uncollectible Accounts					
0053 Other Adjustments	105,158			105,158	
<b>Effect of Changes in Assets, Liabilities, Deferred Outflows and Deferred Inflows</b>					
0054 (Inc) Dec In Accounts Receivable (0120-0150)					
0055 Advances to Other Funds					
0056 (Inc) Dec in Inventories (0170)	162			162	
0057 (Inc) Dec in Prepaid Expenses (0180)					
0058 (Inc) Dec in Other Current or Noncurrent Assets					
0064 Deferred Outflows (0910)					
0059 Inc (Dec) in Accounts Payable (0400-0450)	7,895			7,895	
0060 Inc (Dec) in Accrued Salaries/Benefits (0461)					
0065 Inc (Dec) in Net Pension Liabilities (0570)					
0066 Inc (Dec) in Other Postemp Benefit Oblig (0560)					
0061 Inc (Dec) in Payroll Deductions/Withholding (0462)					
0062 Inc (Dec) in Unearned Revenue (0480)					
0063 Inc (Dec) in Other Current or Noncurrent Liabilities					
0067 Deferred Inflows (0950)					
<b>Total Adjustments</b>	<b>\$125,453</b>			<b>\$125,453</b>	
<b>Cash Provided By (Used for) Total</b>	<b>(\$725,094)</b>			<b>(\$725,094)</b>	

**COMBINED STATEMENT OF CASH FLOWS  
SCHEDULE OF NONCASH INVESTING, CAPITAL, AND FINANCING ACTIVITIES**

Explanation of Transaction and Balance Sheet Effect	Amount
<b>Total</b>	

LEA : 103023153 Elizabeth Forward SD

Printed 11/21/2024 2:46:34 PM

Amounts Expressed in Whole Dollars

Private Purpose Trust  
(71)

Investment Trust  
(72)

Pension Trust  
(73)

Student Activity Custodial  
(81)

**Assets And Deferred Outflows Of Resources**

**Assets**

0100 Cash and Cash Equivalents				161,288
0110 Investments				
0130 Due From Other Funds				
0140 Due from Other Governments, Primary Government and Component Units				
0150 Other Receivables				
0170 Inventories				
0180 Prepaid Expenses (Expenditures)				
0190 Other Current Assets				
0220 Buildings and Building Improvements (Net)				
0230 Tangible Property and Intangible Right-To-Use Assets (Net)				

**Total Assets** **\$161,288**

0910 Deferred Outflows of Resources

**Total Assets And Deferred Outflows Of Resources** **\$161,288**

LEA : 103023153 Elizabeth Forward SD

Printed 11/21/2024 2:46:34 PM

Amounts Expressed in Whole Dollars

Other Custodial  
(89)

Fiduciary Component Units  
(98)

Total Fiduciary Funds

**Assets And Deferred Outflows Of Resources**

**Assets**

0100 Cash and Cash Equivalents			161,288
0110 Investments			
0130 Due From Other Funds			
0140 Due from Other Governments, Primary Government and Component Units			
0150 Other Receivables			
0170 Inventories			
0180 Prepaid Expenses (Expenditures)			
0190 Other Current Assets			
0220 Buildings and Building Improvements (Net)			
0230 Tangible Property and Intangible Right-To-Use Assets (Net)			

**Total Assets** **\$161,288**

0910 Deferred Outflows of Resources

**Total Assets And Deferred Outflows Of Resources** **\$161,288**

LEA : 103023153 Elizabeth Forward SD

Printed 11/21/2024 2:46:34 PM

Amounts Expressed in Whole Dollars	<u>Private Purpose Trust</u> (71)	<u>Investment Trust</u> (72)	<u>Pension Trust</u> (73)	<u>Student Activity Custodial</u> (81)
<b>Liabilities, Deferred Inflows Of Resources And Net Position</b>				
<b>Liabilities</b>				
0400 Due to Other Funds				
0410 Due to Other Governments, Primary Government and Component Units				
0420 Accounts Payable				
0430 Contracts Payable				
0450 Short-Term Payables				
0460 Payroll Accruals and Withholdings				
0480 Unearned Revenues				
0490 Other Current Liabilities				
<b>Total Liabilities</b>				
0950 Deferred Inflows of Resources				
<b>Net Position</b>				
0791 Net Investment in Capital Assets				
0009 Restricted Net Position (0792 – 0798)				
0799 Unrestricted Net Position				161,288
<b>Total Net Position</b>				
<b>\$161,288</b>				
<b>Total Liabilities, Deferred Inflows Of Resources And Net Position</b>				
<b>\$161,288</b>				

LEA : 103023153 Elizabeth Forward SD

Printed 11/21/2024 2:46:34 PM

Amounts Expressed in Whole Dollars	<u>Other Custodial</u> <u>(89)</u>	<u>Fiduciary Component Units</u> <u>(98)</u>	<u>Total Fiduciary Funds</u>
<b>Liabilities, Deferred Inflows Of Resources And Net Position</b>			
<b>Liabilities</b>			
0400 Due to Other Funds			
0410 Due to Other Governments, Primary Government and Component Units			
0420 Accounts Payable			
0430 Contracts Payable			
0450 Short-Term Payables			
0460 Payroll Accruals and Withholdings			
0480 Unearned Revenues			
0490 Other Current Liabilities			
<b>Total Liabilities</b>			
0950 Deferred Inflows of Resources			
<b>Net Position</b>			
0791 Net Investment in Capital Assets			
0009 Restricted Net Position (0792 – 0798)			
0799 Unrestricted Net Position			161,288
<b>Total Net Position</b>			<b>\$161,288</b>
<b>Total Liabilities, Deferred Inflows Of Resources And Net Position</b>			<b>\$161,288</b>

Amounts Expressed in Whole Dollars	<u>Private Purpose Trust</u> (71)	<u>Investment Trust</u> (72)	<u>Pension Trust</u> (73)	<u>Student Activity</u> <u>Custodial</u> (81)	<u>Other Custodial</u> (89)	<u>Fiduciary Component</u> <u>Units</u> (98)
<b>Additions</b>						
0091 Gifts and Contributions						
0095 Net Investment Earnings						
0092 Other Additions				262,661		
<b>Deductions</b>						
0093 Scholarships Awarded						
0094 Other Deductions				296,616		
<b>Change In Net Position</b>				<b>(\$33,955)</b>		
0006 Net Position – Beginning of Fiscal Year				195,243		
0007 Net Position Held in Trust for Pension Benefits						
<b>Net Position - End of Fiscal Year</b>				<b>\$161,288</b>		

Amounts Expressed in Whole Dollars	<u>Total Fiduciary Funds</u>
<b>Additions</b>	
0091 Gifts and Contributions	
0095 Net Investment Earnings	
0092 Other Additions	262,661
<b>Deductions</b>	
0093 Scholarships Awarded	
0094 Other Deductions	296,616
<b>Change In Net Position</b>	<b>(\$33,955)</b>
0006 Net Position – Beginning of Fiscal Year	195,243
0007 Net Position Held in Trust for Pension Benefits	
<b>Net Position - End of Fiscal Year</b>	<b>\$161,288</b>



	<u>Revenue Reported In Current Year</u>	<u>Current Year Tax Accrual</u>	<u>Prior Year Tax Accrual</u>	<u>Taxes Collected In Current Year</u>
<b><u>Revenue from Local Sources</u></b>				
6111 Current Real Estate Taxes	20,439,856.89			20,439,856.89
6113 Public Utility Realty Taxes	21,894.26			21,894.26
6143 Current Act 511 Local Services Taxes	25,936.70			25,936.70
6151 Current Act 511 Earned Income Taxes	2,656,526.54			2,656,526.54
6153 Current Act 511 Real Estate Transfer Taxes	214,002.50			214,002.50
6411 Delinquent Real Estate Taxes	1,220,764.70			1,220,764.70
6451 Delinquent Act 511 Earned Income Taxes	117,474.16			117,474.16
6500 Earnings on Investments	1,163,189.56			
6700 Revenues from LEA Activities	59,156.78			
6832 Federal IDEA Revenue Received as Pass Through	536,668.86			
6910 Rentals	153,887.82			
6920 Contributions and Donations from Private Sources	48,038.00			
6944 Receipts from Other LEAs in Pennsylvania - Education	403,398.70			
6991 Refunds of a Prior Year Expenditure	28,758.32			
6999 Other Revenues Not Specified Above	102,374.26			
<b>TOTAL Revenue from Local Sources</b>	<b>\$27,191,928.05</b>			<b>\$24,696,455.75</b>

**Revenue Reported  
In Current Year**

**Revenue from State Sources**

7111 Basic Education Funding-Formula	11,373,297.78		
7160 Tuition for Orphans Subsidy	50,158.88		
7271 Special Education funds for School-Aged Pupils	2,276,575.24		
7311 Pupil Transportation Subsidy	1,225,355.81		
7312 Nonpublic and Charter School Pupil Transportation Subsidy	31,570.00		
7320 Rental and Sinking Fund Payments / Building Reimbursement Subsidy	790,794.51		
7330 Health Services (Medical, Dental, Nurse, Act 25)	42,815.98		
7340 State Property Tax Reduction Allocation	1,638,078.54		
7362 School Mental Health & Safety and Security Grants	142,460.44		
7369 Other Safe School Grants	30,000.00		
7505 Ready to Learn Block Grant	453,629.00		
7810 State Share of Social Security and Medicare Taxes	951,136.33		
7820 State Share of Retirement Contributions	4,374,213.61		
<b>TOTAL Revenue from State Sources</b>	<b>\$23,380,086.12</b>		

**Revenue Reported  
In Current Year**

**Revenue from Federal Sources**

8514 Title I - Improving the Academic Achievement of the Disadvantaged	378,951.02			
8515 Title II - Preparing, Training, and Recruiting High Quality Teachers and Principals	60,229.00			
8517 Title IV - 21st Century Schools	26,896.00			
8744 ARP ESSER - Elementary and Secondary School Emergency Relief Fund	724,222.00			
8755 ARP ESSER Emergency Relief for Other Educational Entities	0.70			
8810 School-Based Access Medicaid Reimbursement Program (SBAP) Reimbursements (Access)	191,137.55			
8820 Medical Assistance Reimbursement for Administrative Claiming (Quarterly) Program	13,293.06			
<b>TOTAL Revenue from Federal Sources</b>	<b>\$1,394,729.33</b>			

**Revenue Reported  
In Current Year**

**Other Financing Sources**

9350 Enterprise Fund Transfers	2,953.80		
9400 Sale of or Compensation for Loss of Fixed Assets	239,817.30		
9990 Insurance Recoveries	537,877.87		
<b>TOTAL Other Financing Sources</b>	<b>\$780,648.97</b>		
<b>TOTAL FROM ALL SOURCES</b>	<b>\$52,747,392.47</b>		<b>\$24,696,455.75</b>

	<u>General Fund (10)</u>	<u>Student Sponsored Activity Fund (21)</u>	<u>Public Purpose Trust (27)</u>	<u>Other Compt Approved (28)</u>	<u>Athletic / Activity (29)</u>	<u>Capital Reserve (690, 1850) (31)</u>
<b>6000 Revenue from Local Sources</b>						
6111 Current Real Estate Taxes	20,439,856.89					
6113 Public Utility Realty Taxes	21,894.26					
6143 Current Act 511 Local Services Taxes	25,936.70					
6151 Current Act 511 Earned Income Taxes	2,656,526.54					
6153 Current Act 511 Real Estate Transfer Taxes	214,002.50					
6411 Delinquent Real Estate Taxes	1,220,764.70					
6451 Delinquent Act 511 Earned Income Taxes	117,474.16					
6500 Earnings on Investments	1,163,189.56					
6700 Revenues from LEA Activities	59,156.78					
6832 Federal IDEA Revenue Received as Pass Through	536,668.86					
6910 Rentals	153,887.82					
6920 Contributions and Donations from Private Sources	48,038.00					
6944 Receipts from Other LEAs in Pennsylvania - Education	403,398.70					
6991 Refunds of a Prior Year Expenditure	28,758.32					
6999 Other Revenues Not Specified Above	102,374.26					
<b>6000 Total Revenue from Local Sources</b>	<b>\$27,191,928.05</b>					
<b>7000 Revenue from State Sources</b>						
7111 Basic Education Funding-Formula	11,373,297.78					
7160 Tuition for Orphans Subsidy	50,158.88					
7271 Special Education funds for School-Aged Pupils	2,276,575.24					
7311 Pupil Transportation Subsidy	1,225,355.81					
7312 Nonpublic and Charter School Pupil Transportation Subsidy	31,570.00					
7320 Rental and Sinking Fund Payments / Building Reimbursement Subsidy	790,794.51					
7330 Health Services (Medical, Dental, Nurse, Act 25)	42,815.98					
7340 State Property Tax Reduction Allocation	1,638,078.54					
7362 School Mental Health & Safety and Security Grants	142,460.44					
7369 Other Safe School Grants	30,000.00					
7505 Ready to Learn Block Grant	453,629.00					
7810 State Share of Social Security and Medicare Taxes	951,136.33					
7820 State Share of Retirement Contributions	4,374,213.61					
<b>7000 Total Revenue from State Sources</b>	<b>\$23,380,086.12</b>					
<b>8000 Revenue from Federal Sources</b>						
8514 Title I - Improving the Academic Achievement of the Disadvantaged	378,951.02					

LEA : 103023153 Elizabeth Forward SD

Printed 11/21/2024 2:46:40 PM

	<u>Capital Reserve</u> <u>(1431) (32)</u>	<u>Other Capital</u> <u>Projects Fund (39)</u>	<u>Debt Service (40)</u>	<u>Permanent (90)</u>	<u>Total</u>
<b>6000 Revenue from Local Sources</b>					
6111 Current Real Estate Taxes					20,439,856.89
6113 Public Utility Realty Taxes					21,894.26
6143 Current Act 511 Local Services Taxes					25,936.70
6151 Current Act 511 Earned Income Taxes					2,656,526.54
6153 Current Act 511 Real Estate Transfer Taxes					214,002.50
6411 Delinquent Real Estate Taxes					1,220,764.70
6451 Delinquent Act 511 Earned Income Taxes					117,474.16
6500 Earnings on Investments	136,637.19	258,567.16			1,558,393.91
6700 Revenues from LEA Activities					59,156.78
6832 Federal IDEA Revenue Received as Pass Through					536,668.86
6910 Rentals					153,887.82
6920 Contributions and Donations from Private Sources					48,038.00
6944 Receipts from Other LEAs in Pennsylvania - Education					403,398.70
6991 Refunds of a Prior Year Expenditure	48.60				28,806.92
6999 Other Revenues Not Specified Above					102,374.26
<b>6000 Total Revenue from Local Sources</b>	<b>\$136,685.79</b>	<b>\$258,567.16</b>			<b>\$27,587,181.00</b>
<b>7000 Revenue from State Sources</b>					
7111 Basic Education Funding-Formula					11,373,297.78
7160 Tuition for Orphans Subsidy					50,158.88
7271 Special Education funds for School-Aged Pupils					2,276,575.24
7311 Pupil Transportation Subsidy					1,225,355.81
7312 Nonpublic and Charter School Pupil Transportation Subsidy					31,570.00
7320 Rental and Sinking Fund Payments / Building Reimbursement Subsidy					790,794.51
7330 Health Services (Medical, Dental, Nurse, Act 25)					42,815.98
7340 State Property Tax Reduction Allocation					1,638,078.54
7362 School Mental Health & Safety and Security Grants					142,460.44
7369 Other Safe School Grants					30,000.00
7505 Ready to Learn Block Grant					453,629.00
7810 State Share of Social Security and Medicare Taxes					951,136.33
7820 State Share of Retirement Contributions					4,374,213.61
<b>7000 Total Revenue from State Sources</b>					<b>\$23,380,086.12</b>
<b>8000 Revenue from Federal Sources</b>					
8514 Title I - Improving the Academic Achievement of the Disadvantaged					378,951.02

	<u>General Fund (10)</u>	<u>Student Sponsored Activity Fund (21)</u>	<u>Public Purpose Trust (27)</u>	<u>Other Compt Approved (28)</u>	<u>Athletic / Activity (29)</u>	<u>Capital Reserve (690, 1850) (31)</u>
<b>8000 Revenue from Federal Sources</b>						
8515 Title II - Preparing, Training, and Recruiting High Quality Teachers and Principals	60,229.00					
8517 Title IV - 21st Century Schools	26,896.00					
8744 ARP ESSER - Elementary and Secondary School Emergency Relief Fund	724,222.00					
8755 ARP ESSER Emergency Relief for Other Educational Entities	0.70					
8810 School-Based Access Medicaid Reimbursement Program (SBAP) Reimbursements (Access)	191,137.55					
8820 Medical Assistance Reimbursement for Administrative Claiming (Quarterly) Program	13,293.06					
<b>8000 Total Revenue from Federal Sources</b>	<b>\$1,394,729.33</b>					
<b>9000 Other Financing Sources</b>						
9110 Face Value of Bonds Issued						
9310 General Fund Transfers						
9340 Debt Service Fund Transfers						
9350 Enterprise Fund Transfers	2,953.80					
9400 Sale of or Compensation for Loss of Fixed Assets	239,817.30					
9990 Insurance Recoveries	537,877.87					
<b>9000 Total Other Financing Sources</b>	<b>\$780,648.97</b>					
<b>Total From All Sources</b>	<b>\$52,747,392.47</b>					

	<u>Capital Reserve</u> <u>(1431) (32)</u>	<u>Other Capital</u> <u>Projects Fund (39)</u>	<u>Debt Service (40)</u>	<u>Permanent (90)</u>	<u>Total</u>
<b>8000 Revenue from Federal Sources</b>					
8515 Title II - Preparing, Training, and Recruiting High Quality Teachers and Principals					60,229.00
8517 Title IV - 21st Century Schools					26,896.00
8744 ARP ESSER - Elementary and Secondary School Emergency Relief Fund					724,222.00
8755 ARP ESSER Emergency Relief for Other Educational Entities					0.70
8810 School-Based Access Medicaid Reimbursement Program (SBAP) Reimbursements (Access)					191,137.55
8820 Medical Assistance Reimbursement for Administrative Claiming (Quarterly) Program					13,293.06
<b>8000 Total Revenue from Federal Sources</b>					<b>\$1,394,729.33</b>
<b>9000 Other Financing Sources</b>					
9110 Face Value of Bonds Issued			10,000,000.00		10,000,000.00
9310 General Fund Transfers	257,000.00	520,000.00	3,237,648.00		4,014,648.00
9340 Debt Service Fund Transfers		9,706,298.25			9,706,298.25
9350 Enterprise Fund Transfers					2,953.80
9400 Sale of or Compensation for Loss of Fixed Assets					239,817.30
9990 Insurance Recoveries					537,877.87
<b>9000 Total Other Financing Sources</b>	<b>\$257,000.00</b>	<b>\$10,226,298.25</b>	<b>\$13,237,648.00</b>		<b>\$24,501,595.22</b>
<b>Total From All Sources</b>	<b>\$393,685.79</b>	<b>\$10,484,865.41</b>	<b>\$13,237,648.00</b>		<b>\$76,863,591.67</b>



	<u>General Fund (10)</u>	<u>Student Sponsored Activity Fund (21)</u>	<u>Public Purpose Trust (27)</u>	<u>Other Compt Approved (28)</u>	<u>Athletic / Activity (29)</u>	<u>Capital Reserve (690. 1850) (31)</u>
Revenue from Local Sources	27,191,928.05					
Revenue from State Sources	23,380,086.12					
Revenue from Federal Sources	1,394,729.33					
Other Financing Sources	780,648.97					
<b>Total From All Sources</b>	<b>\$52,747,392.47</b>					

	<u>Capital Reserve (1431)</u> <u>(32)</u>	<u>Other Capital Projects</u> <u>Fund (39)</u>	<u>Debt Service (40)</u>	<u>Permanent (90)</u>	<u>Total</u>
Revenue from Local Sources	136,685.79	258,567.16			27,587,181.00
Revenue from State Sources					23,380,086.12
Revenue from Federal Sources					1,394,729.33
Other Financing Sources	257,000.00	10,226,298.25	13,237,648.00		24,501,595.22
<b>Total From All Sources</b>	<b>\$393,685.79</b>	<b>\$10,484,865.41</b>	<b>\$13,237,648.00</b>		<b>\$76,863,591.67</b>

**General Fund (10)**

	<u>Total</u>
<b>1000 Instruction</b>	
<b>100 Personnel Services – Salaries</b>	
100 Personnel Services – Salaries	13,950,352.87
<b>Total Personnel Services – Salaries</b>	<b>\$13,950,352.87</b>
<b>200 Personnel Services – Employee Benefits</b>	
210 Group Insurance – Contracted Provider	3,189,004.34
220 Social Security Contributions	1,044,588.61
230 PSERS Retirement Contributions	4,654,432.76
260 Workers’ Compensation	60,404.96
280 Other Post-Employment Benefits (OPEB)	149,730.14
<b>Total Personnel Services – Employee Benefits</b>	<b>\$9,098,160.81</b>
<b>300 Purchased Professional and Technical Services</b>	
322 Professional Educational Services – Ius	501,706.32
323 Professional Educational Services – Other Educational Agencies	516,165.59
329 Professional Educational Services – Other	389,543.01
330 Other Professional Services	104,190.58
<b>Total Purchased Professional and Technical Services</b>	<b>\$1,511,605.50</b>
<b>400 Purchased Property Services</b>	
430 Repairs and Maintenance Services	22,923.03
440 Rentals	789.00
<b>Total Purchased Property Services</b>	<b>\$23,712.03</b>
<b>500 Other Purchased Services</b>	
510 Student Transportation Services	46,598.51
530 Communications	9,292.33
550 Printing and Binding	101,717.08
561 Tuition To Other School Districts Within the State	32,840.17
562 Tuition To Pennsylvania Charter Schools	1,057,907.84
564 Tuition To Career and Technology Centers	877,320.13
567 Tuition To Approved Private Schools (APS) and PA Chartered Schools for the Deaf and Blind	226,997.79
580 Travel	2,323.00
<b>Total Other Purchased Services</b>	<b>\$2,354,996.85</b>
<b>600 Supplies</b>	
610 General Supplies	377,947.41
630 Food	5,549.78
640 Books and Periodicals	19,938.96
650 Supplies & Fees – Technology Related	325,385.11
<b>Total Supplies</b>	<b>\$728,821.26</b>
<b>700 Property</b>	
752 Capital Equipment – Original and Additional	610,266.37
762 Capitalized Equipment - Replacement	80,000.00
<b>Total Property</b>	<b>\$690,266.37</b>
<b>800 Other Objects</b>	

**General Fund (10)**

<b>1000 Instruction</b>	<u><b>Total</b></u>
<b>800 Other Objects</b>	
810 Dues and Fees	1,569.00
<b>Total Other Objects</b>	<b>\$1,569.00</b>
<b>Total 1000 Instruction</b>	<b>\$28,359,484.69</b>

**General Fund (10)**

**1100 Regular Programs – Elementary / Secondary**

	<u>Elementary</u>	<u>Secondary</u>	<u>Federal</u>	<u>Total</u>
<b>100 Personnel Services – Salaries</b>				
100 Personnel Services – Salaries	5,231,146.07	4,335,328.01	590,072.15	10,156,546.23
<b>Total Personnel Services – Salaries</b>	<b>\$5,231,146.07</b>	<b>\$4,335,328.01</b>	<b>\$590,072.15</b>	<b>\$10,156,546.23</b>
<b>200 Personnel Services – Employee Benefits</b>				
210 Group Insurance – Contracted Provider	1,126,622.37	868,891.51	124,670.64	2,120,184.52
220 Social Security Contributions	391,393.29	325,166.97	44,182.67	760,742.93
230 PSERS Retirement Contributions	1,747,543.09	1,456,898.66	195,484.83	3,399,926.58
260 Workers' Compensation	22,970.54	18,629.55	2,537.73	44,137.82
280 Other Post-Employment Benefits (OPEB)	77,081.07	72,649.07		149,730.14
<b>Total Personnel Services – Employee Benefits</b>	<b>\$3,365,610.36</b>	<b>\$2,742,235.76</b>	<b>\$366,875.87</b>	<b>\$6,474,721.99</b>
<b>300 Purchased Professional and Technical Services</b>				
322 Professional Educational Services – lus	86,773.69			86,773.69
329 Professional Educational Services – Other	252,201.03	135,710.72	1,631.26	389,543.01
<b>Total Purchased Professional and Technical Services</b>	<b>\$338,974.72</b>	<b>\$135,710.72</b>	<b>\$1,631.26</b>	<b>\$476,316.70</b>
<b>400 Purchased Property Services</b>				
430 Repairs and Maintenance Services	8,477.99	14,445.04		22,923.03
440 Rentals		789.00		789.00
<b>Total Purchased Property Services</b>	<b>\$8,477.99</b>	<b>\$15,234.04</b>		<b>\$23,712.03</b>
<b>500 Other Purchased Services</b>				
550 Printing and Binding	52,648.74	49,068.34		101,717.08
562 Tuition To Pennsylvania Charter Schools	318,967.60	300,627.58		619,595.18
580 Travel	1,329.28	993.72		2,323.00
<b>Total Other Purchased Services</b>	<b>\$372,945.62</b>	<b>\$350,689.64</b>		<b>\$723,635.26</b>
<b>600 Supplies</b>				
610 General Supplies	130,768.07	161,474.07		292,242.14
640 Books and Periodicals	18,461.53	1,477.43		19,938.96
650 Supplies & Fees – Technology Related	84,429.94	86,778.25	91,761.92	262,970.11
<b>Total Supplies</b>	<b>\$233,659.54</b>	<b>\$249,729.75</b>	<b>\$91,761.92</b>	<b>\$575,151.21</b>
<b>700 Property</b>				
752 Capital Equipment – Original and Additional	200,219.31	360,875.51		561,094.82
762 Capitalized Equipment - Replacement		80,000.00		80,000.00
<b>Total Property</b>	<b>\$200,219.31</b>	<b>\$440,875.51</b>		<b>\$641,094.82</b>
<b>Total 1100 Regular Programs – Elementary / Secondary</b>	<b>\$9,751,033.61</b>	<b>\$8,269,803.43</b>	<b>\$1,050,341.20</b>	<b>\$19,071,178.24</b>

**General Fund (10)**

**1110 Regular Programs**

	<u>Elementary</u>	<u>Secondary</u>	<u>Federal</u>	<u>Total</u>
<b>100 Personnel Services – Salaries</b>				
100 Personnel Services – Salaries	5,231,146.07	4,335,328.01	203,819.65	9,770,293.73
<b>Total Personnel Services – Salaries</b>	<b>\$5,231,146.07</b>	<b>\$4,335,328.01</b>	<b>\$203,819.65</b>	<b>\$9,770,293.73</b>
<b>200 Personnel Services – Employee Benefits</b>				
210 Group Insurance – Contracted Provider	1,126,622.37	868,891.51	25,040.82	2,020,554.70
220 Social Security Contributions	391,393.29	325,166.97	15,355.59	731,915.85
230 PSERS Retirement Contributions	1,747,543.09	1,456,898.66	65,009.15	3,269,450.90
260 Workers' Compensation	22,970.54	18,629.55	876.54	42,476.63
280 Other Post-Employment Benefits (OPEB)	77,081.07	72,649.07		149,730.14
<b>Total Personnel Services – Employee Benefits</b>	<b>\$3,365,610.36</b>	<b>\$2,742,235.76</b>	<b>\$106,282.10</b>	<b>\$6,214,128.22</b>
<b>300 Purchased Professional and Technical Services</b>				
322 Professional Educational Services – lus	86,773.69			86,773.69
329 Professional Educational Services – Other	252,201.03	135,710.72	1,631.26	389,543.01
<b>Total Purchased Professional and Technical Services</b>	<b>\$338,974.72</b>	<b>\$135,710.72</b>	<b>\$1,631.26</b>	<b>\$476,316.70</b>
<b>400 Purchased Property Services</b>				
430 Repairs and Maintenance Services	8,477.99	14,445.04		22,923.03
440 Rentals		789.00		789.00
<b>Total Purchased Property Services</b>	<b>\$8,477.99</b>	<b>\$15,234.04</b>		<b>\$23,712.03</b>
<b>500 Other Purchased Services</b>				
550 Printing and Binding	52,648.74	49,068.34		101,717.08
562 Tuition To Pennsylvania Charter Schools	318,967.60	300,627.58		619,595.18
580 Travel	1,329.28	993.72		2,323.00
<b>Total Other Purchased Services</b>	<b>\$372,945.62</b>	<b>\$350,689.64</b>		<b>\$723,635.26</b>
<b>600 Supplies</b>				
610 General Supplies	130,768.07	161,474.07		292,242.14
640 Books and Periodicals	18,461.53	1,477.43		19,938.96
650 Supplies & Fees – Technology Related	84,429.94	86,778.25	91,761.92	262,970.11
<b>Total Supplies</b>	<b>\$233,659.54</b>	<b>\$249,729.75</b>	<b>\$91,761.92</b>	<b>\$575,151.21</b>
<b>700 Property</b>				
752 Capital Equipment – Original and Additional	200,219.31	360,875.51		561,094.82
762 Capitalized Equipment - Replacement		80,000.00		80,000.00
<b>Total Property</b>	<b>\$200,219.31</b>	<b>\$440,875.51</b>		<b>\$641,094.82</b>
<b>Total 1110 Regular Programs</b>	<b>\$9,751,033.61</b>	<b>\$8,269,803.43</b>	<b>\$403,494.93</b>	<b>\$18,424,331.97</b>

General Fund (10)

1190 Federally-Funded Regular Programs

Elementary

Secondary

Federal

Total

**100 Personnel Services – Salaries**

100 Personnel Services – Salaries

386,252.50

386,252.50

**Total Personnel Services – Salaries**

**\$386,252.50**

**\$386,252.50**

**200 Personnel Services – Employee Benefits**

210 Group Insurance – Contracted Provider

99,629.82

99,629.82

220 Social Security Contributions

28,827.08

28,827.08

230 PSERS Retirement Contributions

130,475.68

130,475.68

260 Workers' Compensation

1,661.19

1,661.19

**Total Personnel Services – Employee Benefits**

**\$260,593.77**

**\$260,593.77**

**Total 1190 Federally-Funded Regular Programs**

**\$646,846.27**

**\$646,846.27**

**General Fund (10)**

<b>1200 Special Programs – Elementary / Secondary</b>	<u>Elementary</u>	<u>Secondary</u>	<u>Federal</u>	<u>Total</u>
<b>100 Personnel Services – Salaries</b>				
100 Personnel Services – Salaries	1,657,400.12	1,304,112.50	1,038.24	2,962,550.86
<b>Total Personnel Services – Salaries</b>	<b>\$1,657,400.12</b>	<b>\$1,304,112.50</b>	<b>\$1,038.24</b>	<b>\$2,962,550.86</b>
<b>200 Personnel Services – Employee Benefits</b>				
210 Group Insurance – Contracted Provider	530,359.90	382,727.72	8,342.54	921,430.16
220 Social Security Contributions	123,992.09	96,986.44	74.01	221,052.54
230 PSERS Retirement Contributions	549,807.06	424,698.94	353.00	974,859.00
260 Workers' Compensation	7,127.31	5,560.58	4.46	12,692.35
<b>Total Personnel Services – Employee Benefits</b>	<b>\$1,211,286.36</b>	<b>\$909,973.68</b>	<b>\$8,774.01</b>	<b>\$2,130,034.05</b>
<b>300 Purchased Professional and Technical Services</b>				
322 Professional Educational Services – Ius	178,432.99	140,205.02	79,119.62	397,757.63
323 Professional Educational Services – Other Educational Agencies	218,612.79	259,179.80		477,792.59
330 Other Professional Services			104,190.58	104,190.58
<b>Total Purchased Professional and Technical Services</b>	<b>\$397,045.78</b>	<b>\$399,384.82</b>	<b>\$183,310.20</b>	<b>\$979,740.80</b>
<b>500 Other Purchased Services</b>				
510 Student Transportation Services	2,564.20	8,783.41		11,347.61
530 Communications	4,783.69	4,508.64		9,292.33
561 Tuition To Other School Districts Within the State	9,424.13	8,882.27		18,306.40
562 Tuition To Pennsylvania Charter Schools	225,643.36	212,669.30		438,312.66
567 Tuition To Approved Private Schools (APS) and PA Chartered Schools for the Deaf and Blind	116,858.46	110,139.33		226,997.79
<b>Total Other Purchased Services</b>	<b>\$359,273.84</b>	<b>\$344,982.95</b>		<b>\$704,256.79</b>
<b>600 Supplies</b>				
610 General Supplies	6,691.48	8,621.31	40,166.07	55,478.86
630 Food	978.98	4,570.80		5,549.78
650 Supplies & Fees – Technology Related	22,672.59	36,742.41		59,415.00
<b>Total Supplies</b>	<b>\$30,343.05</b>	<b>\$49,934.52</b>	<b>\$40,166.07</b>	<b>\$120,443.64</b>
<b>800 Other Objects</b>				
810 Dues and Fees	782.63	786.37		1,569.00
<b>Total Other Objects</b>	<b>\$782.63</b>	<b>\$786.37</b>		<b>\$1,569.00</b>
<b>Total 1200 Special Programs – Elementary / Secondary</b>	<b>\$3,656,131.78</b>	<b>\$3,009,174.84</b>	<b>\$233,288.52</b>	<b>\$6,898,595.14</b>



**General Fund (10)**

**1210 Life Skills Support**

	<u>Elementary</u>	<u>Secondary</u>	<u>Federal</u>	<u>Total</u>
<b>100 Personnel Services – Salaries</b>				
100 Personnel Services – Salaries	252,602.84	189,168.37		441,771.21
<b>Total Personnel Services – Salaries</b>	<b>\$252,602.84</b>	<b>\$189,168.37</b>		<b>\$441,771.21</b>
<b>200 Personnel Services – Employee Benefits</b>				
210 Group Insurance – Contracted Provider	62,644.14	99,470.41		162,114.55
220 Social Security Contributions	19,121.47	13,260.42		32,381.89
230 PSERS Retirement Contributions	75,955.32	57,908.35		133,863.67
260 Workers' Compensation	1,086.10	766.26		1,852.36
<b>Total Personnel Services – Employee Benefits</b>	<b>\$158,807.03</b>	<b>\$171,405.44</b>		<b>\$330,212.47</b>
<b>300 Purchased Professional and Technical Services</b>				
323 Professional Educational Services – Other Educational Agencies		53,136.83		53,136.83
<b>Total Purchased Professional and Technical Services</b>		<b>\$53,136.83</b>		<b>\$53,136.83</b>
<b>500 Other Purchased Services</b>				
510 Student Transportation Services	979.79	7,564.27		8,544.06
<b>Total Other Purchased Services</b>	<b>\$979.79</b>	<b>\$7,564.27</b>		<b>\$8,544.06</b>
<b>600 Supplies</b>				
610 General Supplies	1,595.67	5,276.78		6,872.45
630 Food	978.98	4,570.80		5,549.78
<b>Total Supplies</b>	<b>\$2,574.65</b>	<b>\$9,847.58</b>		<b>\$12,422.23</b>
<b>Total 1210 Life Skills Support</b>	<b>\$414,964.31</b>	<b>\$431,122.49</b>		<b>\$846,086.80</b>

**General Fund (10)**

	<u>Elementary</u>	<u>Secondary</u>	<u>Federal</u>	<u>Total</u>
<b>1220 Sensory Support</b>				
<b>100 Personnel Services – Salaries</b>				
100 Personnel Services – Salaries	131,756.28	38,083.31		169,839.59
<b>Total Personnel Services – Salaries</b>	<b>\$131,756.28</b>	<b>\$38,083.31</b>		<b>\$169,839.59</b>
<b>200 Personnel Services – Employee Benefits</b>				
210 Group Insurance – Contracted Provider	43,256.44	8,973.81		52,230.25
220 Social Security Contributions	9,726.84	2,789.21		12,516.05
230 PSERS Retirement Contributions	49,017.62	12,199.05		61,216.67
260 Workers' Compensation	566.63	163.69		730.32
<b>Total Personnel Services – Employee Benefits</b>	<b>\$102,567.53</b>	<b>\$24,125.76</b>		<b>\$126,693.29</b>
<b>300 Purchased Professional and Technical Services</b>				
322 Professional Educational Services – Ius	59,740.89	51,363.44		111,104.33
<b>Total Purchased Professional and Technical Services</b>	<b>\$59,740.89</b>	<b>\$51,363.44</b>		<b>\$111,104.33</b>
<b>600 Supplies</b>				
610 General Supplies	683.64	372.92		1,056.56
<b>Total Supplies</b>	<b>\$683.64</b>	<b>\$372.92</b>		<b>\$1,056.56</b>
<b>Total 1220 Sensory Support</b>	<b>\$294,748.34</b>	<b>\$113,945.43</b>		<b>\$408,693.77</b>

**General Fund (10)**

**1240 Academic Support**

	<u>Elementary</u>	<u>Secondary</u>	<u>Federal</u>	<u>Total</u>
<b>100 Personnel Services – Salaries</b>				
100 Personnel Services – Salaries	1,201,368.74	1,009,309.58	1,038.24	2,211,716.56
<b>Total Personnel Services – Salaries</b>	<b>\$1,201,368.74</b>	<b>\$1,009,309.58</b>	<b>\$1,038.24</b>	<b>\$2,211,716.56</b>
<b>200 Personnel Services – Employee Benefits</b>				
210 Group Insurance – Contracted Provider	424,459.32	274,283.50	8,342.54	707,085.36
220 Social Security Contributions	89,706.74	75,812.38	74.01	165,593.13
230 PSERS Retirement Contributions	400,465.53	331,624.10	353.00	732,442.63
260 Workers' Compensation	5,166.29	4,340.07	4.46	9,510.82
<b>Total Personnel Services – Employee Benefits</b>	<b>\$919,797.88</b>	<b>\$686,060.05</b>	<b>\$8,774.01</b>	<b>\$1,614,631.94</b>
<b>500 Other Purchased Services</b>				
510 Student Transportation Services	1,584.41	1,219.14		2,803.55
<b>Total Other Purchased Services</b>	<b>\$1,584.41</b>	<b>\$1,219.14</b>		<b>\$2,803.55</b>
<b>600 Supplies</b>				
610 General Supplies	4,412.17	2,971.61		7,383.78
650 Supplies & Fees – Technology Related	8,309.67	23,205.33		31,515.00
<b>Total Supplies</b>	<b>\$12,721.84</b>	<b>\$26,176.94</b>		<b>\$38,898.78</b>
<b>800 Other Objects</b>				
810 Dues and Fees	782.63	786.37		1,569.00
<b>Total Other Objects</b>	<b>\$782.63</b>	<b>\$786.37</b>		<b>\$1,569.00</b>
<b>Total 1240 Academic Support</b>	<b>\$2,136,255.50</b>	<b>\$1,723,552.08</b>	<b>\$9,812.25</b>	<b>\$3,869,619.83</b>

**General Fund (10)**

	<u>Elementary</u>	<u>Secondary</u>	<u>Federal</u>	<u>Total</u>
<b>1241 Learning Support – Public</b>				
<b>100 Personnel Services – Salaries</b>				
100 Personnel Services – Salaries	1,084,916.45	883,808.15	1,038.24	1,969,762.84
<b>Total Personnel Services – Salaries</b>	<b>\$1,084,916.45</b>	<b>\$883,808.15</b>	<b>\$1,038.24</b>	<b>\$1,969,762.84</b>
<b>200 Personnel Services – Employee Benefits</b>				
210 Group Insurance – Contracted Provider	424,123.74	248,430.88	8,342.54	680,897.16
220 Social Security Contributions	80,800.70	66,336.99	74.01	147,211.70
230 PSERS Retirement Contributions	363,676.97	288,953.62	353.00	652,983.59
260 Workers' Compensation	4,665.17	3,800.37	4.46	8,470.00
<b>Total Personnel Services – Employee Benefits</b>	<b>\$873,266.58</b>	<b>\$607,521.86</b>	<b>\$8,774.01</b>	<b>\$1,489,562.45</b>
<b>600 Supplies</b>				
610 General Supplies	3,167.05	2,525.10		5,692.15
650 Supplies & Fees – Technology Related	8,309.67	23,205.33		31,515.00
<b>Total Supplies</b>	<b>\$11,476.72</b>	<b>\$25,730.43</b>		<b>\$37,207.15</b>
<b>Total 1241 Learning Support – Public</b>	<b>\$1,969,659.75</b>	<b>\$1,517,060.44</b>	<b>\$9,812.25</b>	<b>\$3,496,532.44</b>

**General Fund (10)**

	<u>Elementary</u>	<u>Secondary</u>	<u>Federal</u>	<u>Total</u>
<b>1243 Gifted Support</b>				
<b>100 Personnel Services – Salaries</b>				
100 Personnel Services – Salaries	116,452.29	125,501.43		241,953.72
<b>Total Personnel Services – Salaries</b>	<b>\$116,452.29</b>	<b>\$125,501.43</b>		<b>\$241,953.72</b>
<b>200 Personnel Services – Employee Benefits</b>				
210 Group Insurance – Contracted Provider	335.58	25,852.62		26,188.20
220 Social Security Contributions	8,906.04	9,475.39		18,381.43
230 PSERS Retirement Contributions	36,788.56	42,670.48		79,459.04
260 Workers' Compensation	501.12	539.70		1,040.82
<b>Total Personnel Services – Employee Benefits</b>	<b>\$46,531.30</b>	<b>\$78,538.19</b>		<b>\$125,069.49</b>
<b>500 Other Purchased Services</b>				
510 Student Transportation Services	1,584.41	1,219.14		2,803.55
<b>Total Other Purchased Services</b>	<b>\$1,584.41</b>	<b>\$1,219.14</b>		<b>\$2,803.55</b>
<b>600 Supplies</b>				
610 General Supplies	1,245.12	446.51		1,691.63
<b>Total Supplies</b>	<b>\$1,245.12</b>	<b>\$446.51</b>		<b>\$1,691.63</b>
<b>800 Other Objects</b>				
810 Dues and Fees	782.63	786.37		1,569.00
<b>Total Other Objects</b>	<b>\$782.63</b>	<b>\$786.37</b>		<b>\$1,569.00</b>
<b>Total 1243 Gifted Support</b>	<b>\$166,595.75</b>	<b>\$206,491.64</b>		<b>\$373,087.39</b>

General Fund (10)

1260 Physical Support

300 Purchased Professional and Technical Services

322 Professional Educational Services – lus

**Total Purchased Professional and Technical Services**

**Total 1260 Physical Support**

Elementary

Secondary

Federal

Total

73,461.62

73,461.62

**\$73,461.62**

**\$73,461.62**

**\$73,461.62**

**\$73,461.62**

General Fund (10)

1270 Multi-Handicapped Support

Elementary

Secondary

Federal

Total

300 Purchased Professional and Technical Services

330 Other Professional Services

104,190.58

104,190.58

**Total Purchased Professional and Technical Services**

**\$104,190.58**

**\$104,190.58**

600 Supplies

610 General Supplies

40,166.07

40,166.07

**Total Supplies**

**\$40,166.07**

**\$40,166.07**

**Total 1270 Multi-Handicapped Support**

**\$144,356.65**

**\$144,356.65**

General Fund (10)

1280 Early Intervention Support

Elementary

Secondary

Federal

Total

300 Purchased Professional and Technical Services

322 Professional Educational Services – lus

5,658.00

5,658.00

**Total Purchased Professional and Technical Services**

**\$5,658.00**

**\$5,658.00**

**Total 1280 Early Intervention Support**

**\$5,658.00**

**\$5,658.00**



**General Fund (10)**

	<u>Elementary</u>	<u>Secondary</u>	<u>Federal</u>	<u>Total</u>
<b>1290 Special Programs - Other Support</b>				
<b>100 Personnel Services – Salaries</b>				
100 Personnel Services – Salaries	71,672.26	67,551.24		139,223.50
<b>Total Personnel Services – Salaries</b>	<b>\$71,672.26</b>	<b>\$67,551.24</b>		<b>\$139,223.50</b>
<b>200 Personnel Services – Employee Benefits</b>				
220 Social Security Contributions	5,437.04	5,124.43		10,561.47
230 PSERS Retirement Contributions	24,368.59	22,967.44		47,336.03
260 Workers’ Compensation	308.29	290.56		598.85
<b>Total Personnel Services – Employee Benefits</b>	<b>\$30,113.92</b>	<b>\$28,382.43</b>		<b>\$58,496.35</b>
<b>300 Purchased Professional and Technical Services</b>				
322 Professional Educational Services – Ius	118,692.10	88,841.58		207,533.68
323 Professional Educational Services – Other Educational Agencies	218,612.79	206,042.97		424,655.76
<b>Total Purchased Professional and Technical Services</b>	<b>\$337,304.89</b>	<b>\$294,884.55</b>		<b>\$632,189.44</b>
<b>500 Other Purchased Services</b>				
530 Communications	4,783.69	4,508.64		9,292.33
561 Tuition To Other School Districts Within the State	9,424.13	8,882.27		18,306.40
562 Tuition To Pennsylvania Charter Schools	225,643.36	212,669.30		438,312.66
567 Tuition To Approved Private Schools (APS) and PA Chartered Schools for the Deaf and Blind	116,858.46	110,139.33		226,997.79
<b>Total Other Purchased Services</b>	<b>\$356,709.64</b>	<b>\$336,199.54</b>		<b>\$692,909.18</b>
<b>600 Supplies</b>				
650 Supplies & Fees – Technology Related	14,362.92	13,537.08		27,900.00
<b>Total Supplies</b>	<b>\$14,362.92</b>	<b>\$13,537.08</b>		<b>\$27,900.00</b>
<b>Total 1290 Special Programs - Other Support</b>	<b>\$810,163.63</b>	<b>\$740,554.84</b>		<b>\$1,550,718.47</b>

**General Fund (10)**

**1300 Vocational Education**

**100 Personnel Services – Salaries**

	<u>Elementary</u>	<u>Secondary</u>	<u>Federal</u>	<u>Total</u>
100 Personnel Services – Salaries		764,630.59		764,630.59
<b>Total Personnel Services – Salaries</b>		<b>\$764,630.59</b>		<b>\$764,630.59</b>

**200 Personnel Services – Employee Benefits**

210 Group Insurance – Contracted Provider		147,389.66		147,389.66
220 Social Security Contributions		57,725.36		57,725.36
230 PSERS Retirement Contributions		257,178.20		257,178.20
260 Workers' Compensation		3,288.25		3,288.25
<b>Total Personnel Services – Employee Benefits</b>		<b>\$465,581.47</b>		<b>\$465,581.47</b>

**500 Other Purchased Services**

561 Tuition To Other School Districts Within the State		14,533.77		14,533.77
564 Tuition To Career and Technology Centers		877,320.13		877,320.13
<b>Total Other Purchased Services</b>		<b>\$891,853.90</b>		<b>\$891,853.90</b>

**600 Supplies**

610 General Supplies		30,241.90		30,241.90
650 Supplies & Fees – Technology Related		3,000.00		3,000.00
<b>Total Supplies</b>		<b>\$33,241.90</b>		<b>\$33,241.90</b>

**700 Property**

752 Capital Equipment – Original and Additional		49,171.55		49,171.55
<b>Total Property</b>		<b>\$49,171.55</b>		<b>\$49,171.55</b>

**Total 1300 Vocational Education**

		<b>\$2,204,479.41</b>		<b>\$2,204,479.41</b>
--	--	-----------------------	--	-----------------------

**General Fund (10)**

	<u>Elementary</u>	<u>Secondary</u>	<u>Federal</u>	<u>Total</u>
<b>1400 Other Instructional Programs – Elementary / Secondary</b>				
<b>100 Personnel Services – Salaries</b>				
100 Personnel Services – Salaries	29,444.03	15,035.23	22,145.93	66,625.19
<b>Total Personnel Services – Salaries</b>	<b>\$29,444.03</b>	<b>\$15,035.23</b>	<b>\$22,145.93</b>	<b>\$66,625.19</b>
<b>200 Personnel Services – Employee Benefits</b>				
220 Social Security Contributions	2,244.00	1,133.90	1,689.88	5,067.78
230 PSERS Retirement Contributions	10,010.97	5,111.99	7,346.02	22,468.98
260 Workers' Compensation	126.60	64.72	95.22	286.54
<b>Total Personnel Services – Employee Benefits</b>	<b>\$12,381.57</b>	<b>\$6,310.61</b>	<b>\$9,131.12</b>	<b>\$27,823.30</b>
<b>300 Purchased Professional and Technical Services</b>				
322 Professional Educational Services – Ius	4,132.92	9,067.08		13,200.00
323 Professional Educational Services – Other Educational Agencies			38,373.00	38,373.00
<b>Total Purchased Professional and Technical Services</b>	<b>\$4,132.92</b>	<b>\$9,067.08</b>	<b>\$38,373.00</b>	<b>\$51,573.00</b>
<b>500 Other Purchased Services</b>				
510 Student Transportation Services			35,250.90	35,250.90
<b>Total Other Purchased Services</b>			<b>\$35,250.90</b>	<b>\$35,250.90</b>
<b>600 Supplies</b>				
610 General Supplies	1,633.07	(1,648.56)		(15.49)
<b>Total Supplies</b>	<b>\$1,633.07</b>	<b>(\$1,648.56)</b>		<b>(\$15.49)</b>
<b>Total 1400 Other Instructional Programs – Elementary / Secondary</b>	<b>\$47,591.59</b>	<b>\$28,764.36</b>	<b>\$104,900.95</b>	<b>\$181,256.90</b>

**General Fund (10)**

	<u>Elementary</u>	<u>Secondary</u>	<u>Federal</u>	<u>Total</u>
<b>1420 Summer School</b>				
<b>100 Personnel Services – Salaries</b>				
100 Personnel Services – Salaries	24,520.10	3,197.18	22,145.93	49,863.21
<b>Total Personnel Services – Salaries</b>	<b>\$24,520.10</b>	<b>\$3,197.18</b>	<b>\$22,145.93</b>	<b>\$49,863.21</b>
<b>200 Personnel Services – Employee Benefits</b>				
220 Social Security Contributions	1,873.08	241.75	1,689.88	3,804.71
230 PSERS Retirement Contributions	8,336.83	1,087.04	7,346.02	16,769.89
260 Workers’ Compensation	105.43	13.76	95.22	214.41
<b>Total Personnel Services – Employee Benefits</b>	<b>\$10,315.34</b>	<b>\$1,342.55</b>	<b>\$9,131.12</b>	<b>\$20,789.01</b>
<b>300 Purchased Professional and Technical Services</b>				
322 Professional Educational Services – Ius	4,132.92	9,067.08		13,200.00
323 Professional Educational Services – Other Educational Agencies			38,373.00	38,373.00
<b>Total Purchased Professional and Technical Services</b>	<b>\$4,132.92</b>	<b>\$9,067.08</b>	<b>\$38,373.00</b>	<b>\$51,573.00</b>
<b>500 Other Purchased Services</b>				
510 Student Transportation Services			35,250.90	35,250.90
<b>Total Other Purchased Services</b>			<b>\$35,250.90</b>	<b>\$35,250.90</b>
<b>600 Supplies</b>				
610 General Supplies	1,633.07	(1,648.56)		(15.49)
<b>Total Supplies</b>	<b>\$1,633.07</b>	<b>(\$1,648.56)</b>		<b>(\$15.49)</b>
<b>Total 1420 Summer School</b>	<b>\$40,601.43</b>	<b>\$11,958.25</b>	<b>\$104,900.95</b>	<b>\$157,460.63</b>

**General Fund (10)**

	<u>Elementary</u>	<u>Secondary</u>	<u>Federal</u>	<u>Total</u>
<b>1430 Homebound Instruction</b>				
<b>100 Personnel Services – Salaries</b>				
100 Personnel Services – Salaries	1,181.75	1,450.00		2,631.75
<b>Total Personnel Services – Salaries</b>	<b>\$1,181.75</b>	<b>\$1,450.00</b>		<b>\$2,631.75</b>
<b>200 Personnel Services – Employee Benefits</b>				
220 Social Security Contributions	89.33	109.68		199.01
230 PSERS Retirement Contributions	401.80	493.00		894.80
260 Workers’ Compensation	5.08	6.24		11.32
<b>Total Personnel Services – Employee Benefits</b>	<b>\$496.21</b>	<b>\$608.92</b>		<b>\$1,105.13</b>
<b>Total 1430 Homebound Instruction</b>	<b>\$1,677.96</b>	<b>\$2,058.92</b>		<b>\$3,736.88</b>

**General Fund (10)**

	<u>Elementary</u>	<u>Secondary</u>	<u>Federal</u>	<u>Total</u>
<b>1450 Instructional Programs Outside the Established School Day</b>				
<b>100 Personnel Services – Salaries</b>				
100 Personnel Services – Salaries	3,742.18	10,388.05		14,130.23
<b>Total Personnel Services – Salaries</b>	<b>\$3,742.18</b>	<b>\$10,388.05</b>		<b>\$14,130.23</b>
<b>200 Personnel Services – Employee Benefits</b>				
220 Social Security Contributions	281.59	782.47		1,064.06
230 PSERS Retirement Contributions	1,272.34	3,531.95		4,804.29
260 Workers' Compensation	16.09	44.72		60.81
<b>Total Personnel Services – Employee Benefits</b>	<b>\$1,570.02</b>	<b>\$4,359.14</b>		<b>\$5,929.16</b>
<b>Total 1450 Instructional Programs Outside the Established School Day</b>	<b>\$5,312.20</b>	<b>\$14,747.19</b>		<b>\$20,059.39</b>

General Fund (10)

1500 Nonpublic School Programs

Elementary

Secondary

Federal

Total

300 Purchased Professional and Technical Services

322 Professional Educational Services – lus

3,975.00

3,975.00

**Total Purchased Professional and Technical Services**

**\$3,975.00**

**\$3,975.00**

**Total 1500 Nonpublic School Programs**

**\$3,975.00**

**\$3,975.00**

**General Fund (10)**

**2000 Support Services**

**Total**

**100 Personnel Services – Salaries**

100 Personnel Services – Salaries 6,201,412.30

**Total Personnel Services – Salaries \$6,201,412.30**

**200 Personnel Services – Employee Benefits**

210 Group Insurance – Contracted Provider 1,444,283.04

220 Social Security Contributions 465,052.75

230 PSERS Retirement Contributions 2,008,268.23

240 Tuition Reimbursement 21,289.50

260 Workers' Compensation 26,589.81

**Total Personnel Services – Employee Benefits \$3,965,483.33**

**300 Purchased Professional and Technical Services**

310 Official / Administrative Services 37,606.26

322 Professional Educational Services – Ius 15,000.00

330 Other Professional Services 476,650.13

350 Security / Safety Services 99,393.02

360 Employee Training and Development Services 79,814.97

**Total Purchased Professional and Technical Services \$708,464.38**

**400 Purchased Property Services**

410 Cleaning Services 87,017.55

420 Utility Services 164,510.03

430 Repairs and Maintenance Services 508,717.71

440 Rentals 13,076.24

460 Extermination Services 19,687.00

**Total Purchased Property Services \$793,008.53**

**500 Other Purchased Services**

511 Student Transportation Services from Another LEA Within the State 108,987.04

513 Contracted Carriers 2,908,656.77

516 Student Transportation Services From the IU 526.13

520 Insurance – General 38,269.00

523 General Property and Liability Insurance 228,788.00

530 Communications 149,034.49

549 Other Advertising/Public Relations 13,781.71

550 Printing and Binding 18,912.09

580 Travel 109,621.50

595 IU Payments By Withholding 24,180.28

**Total Other Purchased Services \$3,600,757.01**

**600 Supplies**

610 General Supplies 577,433.36

620 Energy 549,749.05

630 Food 38,364.11

640 Books and Periodicals 9,398.50

650 Supplies & Fees – Technology Related 332,018.66

**Total Supplies \$1,506,963.68**



**General Fund (10)**

**2000 Support Services**

**Total**

**700 Property**

752 Capital Equipment – Original and Additional

80,528.75

**Total Property**

**\$80,528.75**

**800 Other Objects**

810 Dues and Fees

76,169.88

**Total Other Objects**

**\$76,169.88**

**Total 2000 Support Services**

**\$16,932,787.86**

**General Fund (10)**

	<u>Elementary</u>	<u>Secondary</u>	<u>Federal</u>	<u>Total</u>
<b>2100 Support Services – Students</b>				
<b>100 Personnel Services – Salaries</b>				
100 Personnel Services – Salaries	305,510.38	400,808.07	91,745.71	847,735.59
<b>Total Personnel Services – Salaries</b>	<b>\$305,510.38</b>	<b>\$400,808.07</b>	<b>\$91,745.71</b>	<b>\$847,735.59</b>
<b>200 Personnel Services – Employee Benefits</b>				
210 Group Insurance – Contracted Provider	96,281.36	115,677.35	30,107.44	265,247.75
220 Social Security Contributions	22,978.01	30,111.01	6,879.59	63,499.26
230 PSERS Retirement Contributions	103,116.37	135,394.48	31,193.62	286,149.92
260 Workers' Compensation	1,313.96	1,723.83	394.52	3,645.91
<b>Total Personnel Services – Employee Benefits</b>	<b>\$223,689.70</b>	<b>\$282,906.67</b>	<b>\$68,575.17</b>	<b>\$618,542.84</b>
<b>300 Purchased Professional and Technical Services</b>				
330 Other Professional Services	1,801.80	1,698.20		11,833.33
<b>Total Purchased Professional and Technical Services</b>	<b>\$1,801.80</b>	<b>\$1,698.20</b>		<b>\$11,833.33</b>
<b>500 Other Purchased Services</b>				
580 Travel	1,154.91			1,154.91
<b>Total Other Purchased Services</b>	<b>\$1,154.91</b>			<b>\$1,154.91</b>
<b>600 Supplies</b>				
610 General Supplies	5,404.43	3,160.68		8,565.11
650 Supplies & Fees – Technology Related		2,907.36		48,028.22
<b>Total Supplies</b>	<b>\$5,404.43</b>	<b>\$6,068.04</b>		<b>\$56,593.33</b>
<b>Total 2100 Support Services – Students</b>	<b>\$537,561.22</b>	<b>\$691,480.98</b>	<b>\$160,320.88</b>	<b>\$1,535,860.00</b>

**General Fund (10)**

**2120 Guidance Services**

**100 Personnel Services – Salaries**

	<u>Elementary</u>	<u>Secondary</u>	<u>Federal</u>	<u>Total</u>
100 Personnel Services – Salaries	189,068.40	354,088.17	41,888.71	585,045.28
<b>Total Personnel Services – Salaries</b>	<b>\$189,068.40</b>	<b>\$354,088.17</b>	<b>\$41,888.71</b>	<b>\$585,045.28</b>

**200 Personnel Services – Employee Benefits**

210 Group Insurance – Contracted Provider	58,666.13	104,440.94	7,567.00	170,674.07
220 Social Security Contributions	14,221.58	26,573.82	3,165.19	43,960.59
230 PSERS Retirement Contributions	64,150.38	120,098.06	14,242.23	198,490.67
260 Workers' Compensation	813.14	1,522.87	180.13	2,516.14
<b>Total Personnel Services – Employee Benefits</b>	<b>\$137,851.23</b>	<b>\$252,635.69</b>	<b>\$25,154.55</b>	<b>\$415,641.47</b>

**600 Supplies**

610 General Supplies	264.33	2,611.87		2,876.20
650 Supplies & Fees – Technology Related		2,907.36		2,907.36
<b>Total Supplies</b>	<b>\$264.33</b>	<b>\$5,519.23</b>		<b>\$5,783.56</b>
<b>Total 2120 Guidance Services</b>	<b>\$327,183.96</b>	<b>\$612,243.09</b>	<b>\$67,043.26</b>	<b>\$1,006,470.31</b>

**General Fund (10)**

	<u>Elementary</u>	<u>Secondary</u>	<u>Federal</u>	<u>Total</u>
<b>2140 Psychological Services</b>				
<b>100 Personnel Services – Salaries</b>				
100 Personnel Services – Salaries	116,441.98	46,719.90	49,857.00	213,018.88
<b>Total Personnel Services – Salaries</b>	<b>\$116,441.98</b>	<b>\$46,719.90</b>	<b>\$49,857.00</b>	<b>\$213,018.88</b>
<b>200 Personnel Services – Employee Benefits</b>				
210 Group Insurance – Contracted Provider	37,615.23	11,236.41	22,540.44	71,392.08
220 Social Security Contributions	8,756.43	3,537.19	3,714.40	16,008.02
230 PSERS Retirement Contributions	38,965.99	15,296.42	16,951.39	71,213.80
260 Workers' Compensation	500.82	200.96	214.39	916.17
<b>Total Personnel Services – Employee Benefits</b>	<b>\$85,838.47</b>	<b>\$30,270.98</b>	<b>\$43,420.62</b>	<b>\$159,530.07</b>
<b>300 Purchased Professional and Technical Services</b>				
330 Other Professional Services	1,801.80	1,698.20		3,500.00
<b>Total Purchased Professional and Technical Services</b>	<b>\$1,801.80</b>	<b>\$1,698.20</b>		<b>\$3,500.00</b>
<b>500 Other Purchased Services</b>				
580 Travel	1,154.91			1,154.91
<b>Total Other Purchased Services</b>	<b>\$1,154.91</b>			<b>\$1,154.91</b>
<b>600 Supplies</b>				
610 General Supplies	5,140.10	548.81		5,688.91
<b>Total Supplies</b>	<b>\$5,140.10</b>	<b>\$548.81</b>		<b>\$5,688.91</b>
<b>Total 2140 Psychological Services</b>	<b>\$210,377.26</b>	<b>\$79,237.89</b>	<b>\$93,277.62</b>	<b>\$382,892.77</b>

General Fund (10)

2160 Social Work Services

Elementary

Secondary

Federal

Total

300 Purchased Professional and Technical Services

330 Other Professional Services

8,333.33

**Total Purchased Professional and Technical Services**

**\$8,333.33**

600 Supplies

650 Supplies & Fees – Technology Related

3,450.00

**Total Supplies**

**\$3,450.00**

**Total 2160 Social Work Services**

**\$11,783.33**

General Fund (10)

2170 Student Accounting Services

Elementary

Secondary

Federal

Total

100 Personnel Services – Salaries

100 Personnel Services – Salaries

49,671.43

**Total Personnel Services – Salaries**

**\$49,671.43**

200 Personnel Services – Employee Benefits

210 Group Insurance – Contracted Provider

23,181.60

220 Social Security Contributions

3,530.65

230 PSERS Retirement Contributions

16,445.45

260 Workers' Compensation

213.60

**Total Personnel Services – Employee Benefits**

**\$43,371.30**

600 Supplies

650 Supplies & Fees – Technology Related

41,670.86

**Total Supplies**

**\$41,670.86**

**Total 2170 Student Accounting Services**

**\$134,713.59**

**General Fund (10)**

	<u>Elementary</u>	<u>Secondary</u>	<u>Federal</u>	<u>Total</u>
<b>2200 Support Services – Instructional Staff</b>				
<b>100 Personnel Services – Salaries</b>				
100 Personnel Services – Salaries	538,117.66	496,525.82		1,034,643.48
<b>Total Personnel Services – Salaries</b>	<b>\$538,117.66</b>	<b>\$496,525.82</b>		<b>\$1,034,643.48</b>
<b>200 Personnel Services – Employee Benefits</b>				
210 Group Insurance – Contracted Provider	64,413.91	82,408.71		146,822.62
220 Social Security Contributions	40,934.19	37,661.43		78,595.62
230 PSERS Retirement Contributions	159,658.55	160,734.37		320,392.92
240 Tuition Reimbursement	12,797.71	5,089.79		17,887.50
260 Workers' Compensation	2,314.20	2,135.21		4,449.41
<b>Total Personnel Services – Employee Benefits</b>	<b>\$280,118.56</b>	<b>\$288,029.51</b>		<b>\$568,148.07</b>
<b>300 Purchased Professional and Technical Services</b>				
322 Professional Educational Services – lus	7,722.00	7,278.00		15,000.00
360 Employee Training and Development Services	21,074.01	20,785.95		41,859.96
<b>Total Purchased Professional and Technical Services</b>	<b>\$28,796.01</b>	<b>\$28,063.95</b>		<b>\$56,859.96</b>
<b>400 Purchased Property Services</b>				
430 Repairs and Maintenance Services	2,308.88	2,176.12		4,485.00
<b>Total Purchased Property Services</b>	<b>\$2,308.88</b>	<b>\$2,176.12</b>		<b>\$4,485.00</b>
<b>500 Other Purchased Services</b>				
530 Communications	40,192.27	37,881.30		78,073.57
580 Travel	63,132.97	9,743.28		72,876.25
<b>Total Other Purchased Services</b>	<b>\$103,325.24</b>	<b>\$47,624.58</b>		<b>\$150,949.82</b>
<b>600 Supplies</b>				
610 General Supplies	22,164.95	20,859.07		43,024.02
630 Food	1,599.14	1,674.83		3,273.97
640 Books and Periodicals	6,052.00	3,346.50		9,398.50
650 Supplies & Fees – Technology Related	113,206.60	72,023.70		185,230.30
<b>Total Supplies</b>	<b>\$143,022.69</b>	<b>\$97,904.10</b>		<b>\$240,926.79</b>
<b>800 Other Objects</b>				
810 Dues and Fees	155.84	146.88		302.72
<b>Total Other Objects</b>	<b>\$155.84</b>	<b>\$146.88</b>		<b>\$302.72</b>
<b>Total 2200 Support Services – Instructional Staff</b>	<b>\$1,095,844.88</b>	<b>\$960,470.96</b>		<b>\$2,056,315.84</b>

**General Fund (10)**

**2240 Computer-Assisted Instruction Support Services**

	<u>Elementary</u>	<u>Secondary</u>	<u>Federal</u>	<u>Total</u>
<b>100 Personnel Services – Salaries</b>				
100 Personnel Services – Salaries	183,194.65	172,661.32		355,855.97
<b>Total Personnel Services – Salaries</b>	<b>\$183,194.65</b>	<b>\$172,661.32</b>		<b>\$355,855.97</b>
<b>200 Personnel Services – Employee Benefits</b>				
210 Group Insurance – Contracted Provider	18,692.95	17,618.13		36,311.08
220 Social Security Contributions	13,976.99	13,173.34		27,150.33
230 PSERS Retirement Contributions	58,313.09	54,960.18		113,273.27
260 Workers' Compensation	787.75	742.45		1,530.20
<b>Total Personnel Services – Employee Benefits</b>	<b>\$91,770.78</b>	<b>\$86,494.10</b>		<b>\$178,264.88</b>
<b>400 Purchased Property Services</b>				
430 Repairs and Maintenance Services	2,308.88	2,176.12		4,485.00
<b>Total Purchased Property Services</b>	<b>\$2,308.88</b>	<b>\$2,176.12</b>		<b>\$4,485.00</b>
<b>500 Other Purchased Services</b>				
530 Communications	40,192.27	37,881.30		78,073.57
580 Travel	652.21	614.71		1,266.92
<b>Total Other Purchased Services</b>	<b>\$40,844.48</b>	<b>\$38,496.01</b>		<b>\$79,340.49</b>
<b>600 Supplies</b>				
610 General Supplies	920.72	867.79		1,788.51
630 Food	66.66	62.83		129.49
650 Supplies & Fees – Technology Related	71,723.64	67,599.67		139,323.31
<b>Total Supplies</b>	<b>\$72,711.02</b>	<b>\$68,530.29</b>		<b>\$141,241.31</b>
<b>800 Other Objects</b>				
810 Dues and Fees	123.55	116.45		240.00
<b>Total Other Objects</b>	<b>\$123.55</b>	<b>\$116.45</b>		<b>\$240.00</b>
<b>Total 2240 Computer-Assisted Instruction Support Services</b>	<b>\$390,953.36</b>	<b>\$368,474.29</b>		<b>\$759,427.65</b>



**General Fund (10)**

**2250 School Library Services**

	<u>Elementary</u>	<u>Secondary</u>	<u>Federal</u>	<u>Total</u>
<b>100 Personnel Services – Salaries</b>				
100 Personnel Services – Salaries	101,098.38	108,955.64		210,054.02
<b>Total Personnel Services – Salaries</b>	<b>\$101,098.38</b>	<b>\$108,955.64</b>		<b>\$210,054.02</b>
<b>200 Personnel Services – Employee Benefits</b>				
210 Group Insurance – Contracted Provider	17,474.10	38,167.86		55,641.96
220 Social Security Contributions	7,643.88	8,145.86		15,789.74
230 PSERS Retirement Contributions	28,423.25	37,044.87		65,468.12
260 Workers' Compensation	434.64	468.44		903.08
<b>Total Personnel Services – Employee Benefits</b>	<b>\$53,975.87</b>	<b>\$83,827.03</b>		<b>\$137,802.90</b>
<b>600 Supplies</b>				
610 General Supplies	1,651.79	1,472.39		3,124.18
640 Books and Periodicals	6,052.00	3,346.50		9,398.50
650 Supplies & Fees – Technology Related	15,378.85	3,162.51		18,541.36
<b>Total Supplies</b>	<b>\$23,082.64</b>	<b>\$7,981.40</b>		<b>\$31,064.04</b>
<b>Total 2250 School Library Services</b>	<b>\$178,156.89</b>	<b>\$200,764.07</b>		<b>\$378,920.96</b>

**General Fund (10)**

**2260 Instruction and Curriculum Development Services**

	<u>Elementary</u>	<u>Secondary</u>	<u>Federal</u>	<u>Total</u>
<b>100 Personnel Services – Salaries</b>				
100 Personnel Services – Salaries	220,152.08	207,493.79		427,645.87
<b>Total Personnel Services – Salaries</b>	<b>\$220,152.08</b>	<b>\$207,493.79</b>		<b>\$427,645.87</b>
<b>200 Personnel Services – Employee Benefits</b>				
210 Group Insurance – Contracted Provider	28,246.86	26,622.72		54,869.58
220 Social Security Contributions	16,744.80	15,782.01		32,526.81
230 PSERS Retirement Contributions	70,247.28	66,208.20		136,455.48
260 Workers' Compensation	946.61	892.18		1,838.79
<b>Total Personnel Services – Employee Benefits</b>	<b>\$116,185.55</b>	<b>\$109,505.11</b>		<b>\$225,690.66</b>
<b>300 Purchased Professional and Technical Services</b>				
322 Professional Educational Services – Ius	7,722.00	7,278.00		15,000.00
<b>Total Purchased Professional and Technical Services</b>	<b>\$7,722.00</b>	<b>\$7,278.00</b>		<b>\$15,000.00</b>
<b>500 Other Purchased Services</b>				
580 Travel	1,605.54	1,513.21		3,118.75
<b>Total Other Purchased Services</b>	<b>\$1,605.54</b>	<b>\$1,513.21</b>		<b>\$3,118.75</b>
<b>600 Supplies</b>				
610 General Supplies	19,592.44	18,465.90		38,058.34
630 Food	1,532.48	1,444.37		2,976.85
650 Supplies & Fees – Technology Related	1,338.48	1,261.52		2,600.00
<b>Total Supplies</b>	<b>\$22,463.40</b>	<b>\$21,171.79</b>		<b>\$43,635.19</b>
<b>800 Other Objects</b>				
810 Dues and Fees	32.29	30.43		62.72
<b>Total Other Objects</b>	<b>\$32.29</b>	<b>\$30.43</b>		<b>\$62.72</b>
<b>Total 2260 Instruction and Curriculum Development Services</b>	<b>\$368,160.86</b>	<b>\$346,992.33</b>		<b>\$715,153.19</b>

**General Fund (10)**

	<u>Elementary</u>	<u>Secondary</u>	<u>Federal</u>	<u>Total</u>
<b>2270 Instructional Staff Professional Development Services</b>				
<b>100 Personnel Services – Salaries</b>				
100 Personnel Services – Salaries	7,867.43	7,415.07		15,282.50
<b>Total Personnel Services – Salaries</b>	<b>\$7,867.43</b>	<b>\$7,415.07</b>		<b>\$15,282.50</b>
<b>200 Personnel Services – Employee Benefits</b>				
220 Social Security Contributions	594.39	560.22		1,154.61
230 PSERS Retirement Contributions	2,674.93	2,521.12		5,196.05
240 Tuition Reimbursement	12,797.71	5,089.79		17,887.50
260 Workers' Compensation	34.10	32.14		66.24
<b>Total Personnel Services – Employee Benefits</b>	<b>\$16,101.13</b>	<b>\$8,203.27</b>		<b>\$24,304.40</b>
<b>300 Purchased Professional and Technical Services</b>				
360 Employee Training and Development Services	21,074.01	20,785.95		41,859.96
<b>Total Purchased Professional and Technical Services</b>	<b>\$21,074.01</b>	<b>\$20,785.95</b>		<b>\$41,859.96</b>
<b>500 Other Purchased Services</b>				
580 Travel	60,875.22	7,615.36		68,490.58
<b>Total Other Purchased Services</b>	<b>\$60,875.22</b>	<b>\$7,615.36</b>		<b>\$68,490.58</b>
<b>600 Supplies</b>				
610 General Supplies		52.99		52.99
630 Food		167.63		167.63
650 Supplies & Fees – Technology Related	24,765.63			24,765.63
<b>Total Supplies</b>	<b>\$24,765.63</b>	<b>\$220.62</b>		<b>\$24,986.25</b>
<b>Total 2270 Instructional Staff Professional Development Services</b>	<b>\$130,683.42</b>	<b>\$44,240.27</b>		<b>\$174,923.69</b>

General Fund (10)

	<u>Elementary</u>	<u>Secondary</u>	<u>Federal</u>	<u>Total</u>
<b>2290 Other Instructional Staff Services</b>				
<b>100 Personnel Services – Salaries</b>				
100 Personnel Services – Salaries	25,805.12			25,805.12
<b>Total Personnel Services – Salaries</b>	<b>\$25,805.12</b>			<b>\$25,805.12</b>
<b>200 Personnel Services – Employee Benefits</b>				
220 Social Security Contributions	1,974.13			1,974.13
260 Workers' Compensation	111.10			111.10
<b>Total Personnel Services – Employee Benefits</b>	<b>\$2,085.23</b>			<b>\$2,085.23</b>
<b>Total 2290 Other Instructional Staff Services</b>	<b>\$27,890.35</b>			<b>\$27,890.35</b>

**General Fund (10)**

	<u>Elementary</u>	<u>Secondary</u>	<u>Federal</u>	<u>Total</u>
<b>2300 Support Services – Administration</b>				
<b>100 Personnel Services – Salaries</b>				
100 Personnel Services – Salaries	639,218.42	632,713.73		1,552,210.56
<b>Total Personnel Services – Salaries</b>	<b>\$639,218.42</b>	<b>\$632,713.73</b>		<b>\$1,552,210.56</b>
<b>200 Personnel Services – Employee Benefits</b>				
210 Group Insurance – Contracted Provider	132,756.34	189,365.36		372,636.24
220 Social Security Contributions	48,422.07	47,841.07		115,547.09
230 PSERS Retirement Contributions	196,993.52	209,076.59		498,412.93
260 Workers' Compensation	2,749.23	2,721.23		6,675.65
<b>Total Personnel Services – Employee Benefits</b>	<b>\$380,921.16</b>	<b>\$449,004.25</b>		<b>\$993,271.91</b>
<b>300 Purchased Professional and Technical Services</b>				
310 Official / Administrative Services				37,606.26
330 Other Professional Services				310,444.05
<b>Total Purchased Professional and Technical Services</b>				<b>\$348,050.31</b>
<b>500 Other Purchased Services</b>				
520 Insurance – General				38,269.00
530 Communications	11,618.82	10,832.23		22,451.05
549 Other Advertising/Public Relations				4,344.05
580 Travel	1,723.68	2,124.97		6,746.50
<b>Total Other Purchased Services</b>	<b>\$13,342.50</b>	<b>\$12,957.20</b>		<b>\$71,810.60</b>
<b>600 Supplies</b>				
610 General Supplies				15,575.96
630 Food	2,310.03	14,666.99		35,090.14
650 Supplies & Fees – Technology Related				8,593.50
<b>Total Supplies</b>	<b>\$2,310.03</b>	<b>\$14,666.99</b>		<b>\$59,259.60</b>
<b>800 Other Objects</b>				
810 Dues and Fees	620.00	1,815.00		31,803.39
<b>Total Other Objects</b>	<b>\$620.00</b>	<b>\$1,815.00</b>		<b>\$31,803.39</b>
<b>Total 2300 Support Services – Administration</b>	<b>\$1,036,412.11</b>	<b>\$1,111,157.17</b>		<b>\$3,056,406.37</b>

General Fund (10)

2310 Board Services

Elementary

Secondary

Federal

Total

300 Purchased Professional and Technical Services

330 Other Professional Services

27,688.96

**Total Purchased Professional and Technical Services**

**\$27,688.96**

500 Other Purchased Services

520 Insurance – General

37,382.00

549 Other Advertising/Public Relations

4,344.05

**Total Other Purchased Services**

**\$41,726.05**

600 Supplies

630 Food

958.56

650 Supplies & Fees – Technology Related

8,593.50

**Total Supplies**

**\$9,552.06**

800 Other Objects

810 Dues and Fees

20,523.87

**Total Other Objects**

**\$20,523.87**

**Total 2310 Board Services**

**\$99,490.94**

General Fund (10)

	<u>Elementary</u>	<u>Secondary</u>	<u>Federal</u>	<u>Total</u>
<b>2330 Tax Assessment and Collection Services</b>				
<b>300 <u>Purchased Professional and Technical Services</u></b>				
310 Official / Administrative Services				37,606.26
330 Other Professional Services				197,577.68
<b>Total Purchased Professional and Technical Services</b>				<b>\$235,183.94</b>
<b>500 <u>Other Purchased Services</u></b>				
520 Insurance – General				887.00
<b>Total Other Purchased Services</b>				<b>\$887.00</b>
<b>Total 2330 Tax Assessment and Collection Services</b>				<b>\$236,070.94</b>

General Fund (10)

2340 Staff Relations and Negotiations Services

Elementary

Secondary

Federal

Total

600 Supplies

610 General Supplies

3,098.53

**Total Supplies**

**\$3,098.53**

**Total 2340 Staff Relations and Negotiations Services**

**\$3,098.53**



General Fund (10)

2350 Legal and Accounting Services

Elementary

Secondary

Federal

Total

300 Purchased Professional and Technical Services

330 Other Professional Services

85,177.41

**Total Purchased Professional and Technical Services**

**\$85,177.41**

**Total 2350 Legal and Accounting Services**

**\$85,177.41**

**General Fund (10)**

	<u>Elementary</u>	<u>Secondary</u>	<u>Federal</u>	<u>Total</u>
<b>2360 Office of the Superintendent / Executive Director Services</b>				
<b>100 <u>Personnel Services – Salaries</u></b>				
100 Personnel Services – Salaries				280,278.41
<b>Total Personnel Services – Salaries</b>				<b>\$280,278.41</b>
<b>200 <u>Personnel Services – Employee Benefits</u></b>				
210 Group Insurance – Contracted Provider				50,514.54
220 Social Security Contributions				19,283.95
230 PSERS Retirement Contributions				92,342.82
260 Workers' Compensation				1,205.19
<b>Total Personnel Services – Employee Benefits</b>				<b>\$163,346.50</b>
<b>500 <u>Other Purchased Services</u></b>				
580 Travel				2,897.85
<b>Total Other Purchased Services</b>				<b>\$2,897.85</b>
<b>600 <u>Supplies</u></b>				
610 General Supplies				6,951.02
630 Food				10,743.25
<b>Total Supplies</b>				<b>\$17,694.27</b>
<b>800 <u>Other Objects</u></b>				
810 Dues and Fees				8,844.52
<b>Total Other Objects</b>				<b>\$8,844.52</b>
<b>Total 2360 Office of the Superintendent / Executive Director Services</b>				<b>\$473,061.55</b>

General Fund (10)

2370 Community Relations Services

Elementary

Secondary

Federal

Total

600 Supplies

610 General Supplies

5,526.41

630 Food

6,411.31

**Total Supplies**

**\$11,937.72**

**Total 2370 Community Relations Services**

**\$11,937.72**

**General Fund (10)**

**2380 Office of the Principal Services**

**100 Personnel Services – Salaries**

	<u>Elementary</u>	<u>Secondary</u>	<u>Federal</u>	<u>Total</u>
100 Personnel Services – Salaries	639,218.42	632,713.73		1,271,932.15
<b>Total Personnel Services – Salaries</b>	<b>\$639,218.42</b>	<b>\$632,713.73</b>		<b>\$1,271,932.15</b>

**200 Personnel Services – Employee Benefits**

210 Group Insurance – Contracted Provider	132,756.34	189,365.36		322,121.70
220 Social Security Contributions	48,422.07	47,841.07		96,263.14
230 PSERS Retirement Contributions	196,993.52	209,076.59		406,070.11
260 Workers' Compensation	2,749.23	2,721.23		5,470.46
<b>Total Personnel Services – Employee Benefits</b>	<b>\$380,921.16</b>	<b>\$449,004.25</b>		<b>\$829,925.41</b>

**500 Other Purchased Services**

530 Communications	11,618.82	10,832.23		22,451.05
580 Travel	1,723.68	2,124.97		3,848.65
<b>Total Other Purchased Services</b>	<b>\$13,342.50</b>	<b>\$12,957.20</b>		<b>\$26,299.70</b>

**600 Supplies**

630 Food	2,310.03	14,666.99		16,977.02
<b>Total Supplies</b>	<b>\$2,310.03</b>	<b>\$14,666.99</b>		<b>\$16,977.02</b>

**800 Other Objects**

810 Dues and Fees	620.00	1,815.00		2,435.00
<b>Total Other Objects</b>	<b>\$620.00</b>	<b>\$1,815.00</b>		<b>\$2,435.00</b>

**Total 2380 Office of the Principal Services**

	<b>\$1,036,412.11</b>	<b>\$1,111,157.17</b>		<b>\$2,147,569.28</b>
--	-----------------------	-----------------------	--	-----------------------

**General Fund (10)**

	<u>Elementary</u>	<u>Secondary</u>	<u>Federal</u>	<u>Total</u>
<b>2400 Support Services – Pupil Health</b>				
<b>100 Personnel Services – Salaries</b>				
100 Personnel Services – Salaries				331,644.61
<b>Total Personnel Services – Salaries</b>				<b>\$331,644.61</b>
<b>200 Personnel Services – Employee Benefits</b>				
210 Group Insurance – Contracted Provider				49,214.40
220 Social Security Contributions				25,084.99
230 PSERS Retirement Contributions				105,194.28
260 Workers' Compensation				1,425.95
<b>Total Personnel Services – Employee Benefits</b>				<b>\$180,919.62</b>
<b>300 Purchased Professional and Technical Services</b>				
330 Other Professional Services				151,072.85
<b>Total Purchased Professional and Technical Services</b>				<b>\$151,072.85</b>
<b>500 Other Purchased Services</b>				
580 Travel				126.32
<b>Total Other Purchased Services</b>				<b>\$126.32</b>
<b>600 Supplies</b>				
610 General Supplies				16,195.25
<b>Total Supplies</b>				<b>\$16,195.25</b>
<b>Total 2400 Support Services – Pupil Health</b>				<b>\$679,958.65</b>

General Fund (10)

2420 Medical Services

Elementary

Secondary

Federal

Total

300 Purchased Professional and Technical Services

330 Other Professional Services

12,176.80

**Total Purchased Professional and Technical Services**

**\$12,176.80**

**Total 2420 Medical Services**

**\$12,176.80**

General Fund (10)

2440 Nursing Services

Elementary

Secondary

Federal

Total

100 Personnel Services – Salaries

100 Personnel Services – Salaries

331,644.61

**Total Personnel Services – Salaries**

**\$331,644.61**

200 Personnel Services – Employee Benefits

210 Group Insurance – Contracted Provider

49,214.40

220 Social Security Contributions

25,084.99

230 PSERS Retirement Contributions

105,194.28

260 Workers' Compensation

1,425.95

**Total Personnel Services – Employee Benefits**

**\$180,919.62**

300 Purchased Professional and Technical Services

330 Other Professional Services

138,896.05

**Total Purchased Professional and Technical Services**

**\$138,896.05**

500 Other Purchased Services

580 Travel

126.32

**Total Other Purchased Services**

**\$126.32**

600 Supplies

610 General Supplies

8,776.75

**Total Supplies**

**\$8,776.75**

**Total 2440 Nursing Services**

**\$660,363.35**

General Fund (10)

2490 Other Health Services

Elementary

Secondary

Federal

Total

600 Supplies

610 General Supplies

7,418.50

**Total Supplies**

**\$7,418.50**

**Total 2490 Other Health Services**

**\$7,418.50**



**General Fund (10)**

	<u>Elementary</u>	<u>Secondary</u>	<u>Federal</u>	<u>Total</u>
<b>2500 Support Services – Business</b>				
<b>100 Personnel Services – Salaries</b>				
100 Personnel Services – Salaries				385,418.80
<b>Total Personnel Services – Salaries</b>				<b>\$385,418.80</b>
<b>200 Personnel Services – Employee Benefits</b>				
210 Group Insurance – Contracted Provider				92,090.60
220 Social Security Contributions				27,700.81
230 PSERS Retirement Contributions				118,902.44
260 Workers' Compensation				1,571.34
<b>Total Personnel Services – Employee Benefits</b>				<b>\$240,265.19</b>
<b>500 Other Purchased Services</b>				
530 Communications				3,000.00
580 Travel				783.04
<b>Total Other Purchased Services</b>				<b>\$3,783.04</b>
<b>600 Supplies</b>				
610 General Supplies				7,628.98
650 Supplies & Fees – Technology Related				26,500.00
<b>Total Supplies</b>				<b>\$34,128.98</b>
<b>800 Other Objects</b>				
810 Dues and Fees				40,338.77
<b>Total Other Objects</b>				<b>\$40,338.77</b>
<b>Total 2500 Support Services – Business</b>				<b>\$703,934.78</b>

**General Fund (10)**

**2510 Fiscal Services**

Elementary                      Secondary                      Federal                      Total

<b>100</b>	<b><u>Personnel Services – Salaries</u></b>				
	100 Personnel Services – Salaries				385,418.80
<b>Total Personnel Services – Salaries</b>					<b>\$385,418.80</b>
<b>200</b>	<b><u>Personnel Services – Employee Benefits</u></b>				
	210 Group Insurance – Contracted Provider				92,090.60
	220 Social Security Contributions				27,700.81
	230 PSERS Retirement Contributions				118,902.44
	260 Workers' Compensation				1,571.34
<b>Total Personnel Services – Employee Benefits</b>					<b>\$240,265.19</b>
<b>500</b>	<b><u>Other Purchased Services</u></b>				
	530 Communications				3,000.00
	580 Travel				783.04
<b>Total Other Purchased Services</b>					<b>\$3,783.04</b>
<b>600</b>	<b><u>Supplies</u></b>				
	610 General Supplies				7,628.98
	650 Supplies & Fees – Technology Related				26,500.00
<b>Total Supplies</b>					<b>\$34,128.98</b>
<b>800</b>	<b><u>Other Objects</u></b>				
	810 Dues and Fees				40,338.77
<b>Total Other Objects</b>					<b>\$40,338.77</b>
<b>Total 2510 Fiscal Services</b>					<b>\$703,934.78</b>

**General Fund (10)**

**2511 Supervision of Fiscal Services - Head of Component**

	<u>Elementary</u>	<u>Secondary</u>	<u>Federal</u>	<u>Total</u>
<b>100 Personnel Services – Salaries</b>				
100 Personnel Services – Salaries				179,139.13
<b>Total Personnel Services – Salaries</b>				<b>\$179,139.13</b>
<b>200 Personnel Services – Employee Benefits</b>				
210 Group Insurance – Contracted Provider				27,861.12
220 Social Security Contributions				12,058.53
230 PSERS Retirement Contributions				51,707.70
260 Workers' Compensation				684.08
<b>Total Personnel Services – Employee Benefits</b>				<b>\$92,311.43</b>
<b>500 Other Purchased Services</b>				
530 Communications				3,000.00
580 Travel				783.04
<b>Total Other Purchased Services</b>				<b>\$3,783.04</b>
<b>600 Supplies</b>				
610 General Supplies				7,628.98
650 Supplies & Fees – Technology Related				26,500.00
<b>Total Supplies</b>				<b>\$34,128.98</b>
<b>800 Other Objects</b>				
810 Dues and Fees				3,508.28
<b>Total Other Objects</b>				<b>\$3,508.28</b>
<b>Total 2511 Supervision of Fiscal Services - Head of Component</b>				<b>\$312,870.86</b>

General Fund (10)

2513 Receiving and Disbursing Funds Services

Elementary

Secondary

Federal

Total

100 Personnel Services – Salaries

100 Personnel Services – Salaries

49,671.43

**Total Personnel Services – Salaries**

**\$49,671.43**

200 Personnel Services – Employee Benefits

210 Group Insurance – Contracted Provider

23,116.60

220 Social Security Contributions

3,748.56

230 PSERS Retirement Contributions

16,445.45

260 Workers' Compensation

213.60

**Total Personnel Services – Employee Benefits**

**\$43,524.21**

**Total 2513 Receiving and Disbursing Funds Services**

**\$93,195.64**

General Fund (10)

2514 Payroll Services

100 Personnel Services – Salaries

100 Personnel Services – Salaries

Elementary

Secondary

Federal

Total

69,532.11

**Total Personnel Services – Salaries**

**\$69,532.11**

200 Personnel Services – Employee Benefits

210 Group Insurance – Contracted Provider

26,315.16

220 Social Security Contributions

5,260.74

230 PSERS Retirement Contributions

23,041.71

260 Workers' Compensation

299.19

**Total Personnel Services – Employee Benefits**

**\$54,916.80**

**Total 2514 Payroll Services**

**\$124,448.91**

General Fund (10)

	<u>Elementary</u>	<u>Secondary</u>	<u>Federal</u>	<u>Total</u>
<b>2515 Financial Accounting Services</b>				
<b>100 Personnel Services – Salaries</b>				
100 Personnel Services – Salaries				87,076.13
<b>Total Personnel Services – Salaries</b>				<b>\$87,076.13</b>
<b>200 Personnel Services – Employee Benefits</b>				
210 Group Insurance – Contracted Provider				14,797.72
220 Social Security Contributions				6,632.98
230 PSERS Retirement Contributions				27,707.58
260 Workers' Compensation				374.47
<b>Total Personnel Services – Employee Benefits</b>				<b>\$49,512.75</b>
<b>Total 2515 Financial Accounting Services</b>				<b>\$136,588.88</b>

General Fund (10)

2519 Other Fiscal Services

Elementary

Secondary

Federal

Total

800 Other Objects

810 Dues and Fees

36,830.49

**Total Other Objects**

**\$36,830.49**

**Total 2519 Other Fiscal Services**

**\$36,830.49**

**General Fund (10)**

	<u>Elementary</u>	<u>Secondary</u>	<u>Federal</u>	<u>Total</u>
<b>2600 Operation and Maintenance of Plant Services</b>				
<b>100 Personnel Services – Salaries</b>				
100 Personnel Services – Salaries				1,857,185.26
<b>Total Personnel Services – Salaries</b>				<b>\$1,857,185.26</b>
<b>200 Personnel Services – Employee Benefits</b>				
210 Group Insurance – Contracted Provider				491,126.61
220 Social Security Contributions				140,059.93
230 PSERS Retirement Contributions				617,651.71
260 Workers' Compensation				7,993.39
<b>Total Personnel Services – Employee Benefits</b>				<b>\$1,256,831.64</b>
<b>300 Purchased Professional and Technical Services</b>				
350 Security / Safety Services				99,393.02
<b>Total Purchased Professional and Technical Services</b>				<b>\$99,393.02</b>
<b>400 Purchased Property Services</b>				
410 Cleaning Services				87,017.55
420 Utility Services				164,510.03
430 Repairs and Maintenance Services				504,232.71
440 Rentals				13,076.24
460 Extermination Services				19,687.00
<b>Total Purchased Property Services</b>				<b>\$788,523.53</b>
<b>500 Other Purchased Services</b>				
523 General Property and Liability Insurance				228,788.00
530 Communications				45,509.87
580 Travel				10,467.13
<b>Total Other Purchased Services</b>				<b>\$284,765.00</b>
<b>600 Supplies</b>				
610 General Supplies	236,899.15	246,473.41		483,372.56
620 Energy				549,749.05
650 Supplies & Fees – Technology Related				50,262.34
<b>Total Supplies</b>	<b>\$236,899.15</b>	<b>\$246,473.41</b>		<b>\$1,083,383.95</b>
<b>700 Property</b>				
752 Capital Equipment – Original and Additional				80,528.75
<b>Total Property</b>				<b>\$80,528.75</b>
<b>800 Other Objects</b>				
810 Dues and Fees				550.00
<b>Total Other Objects</b>				<b>\$550.00</b>
<b>Total 2600 Operation and Maintenance of Plant Services</b>	<b>\$236,899.15</b>	<b>\$246,473.41</b>		<b>\$5,451,161.15</b>



**General Fund (10)**

2610 Supervision of Operation and Maintenance of Plant Services	<u>Elementary</u>	<u>Secondary</u>	<u>Federal</u>	<u>Total</u>
<b>100 Personnel Services – Salaries</b>				
100 Personnel Services – Salaries				99,261.72
<b>Total Personnel Services – Salaries</b>				<b>\$99,261.72</b>
<b>200 Personnel Services – Employee Benefits</b>				
210 Group Insurance – Contracted Provider				26,246.56
220 Social Security Contributions				7,440.91
230 PSERS Retirement Contributions				32,498.95
260 Workers' Compensation				426.87
<b>Total Personnel Services – Employee Benefits</b>				<b>\$66,613.29</b>
<b>500 Other Purchased Services</b>				
580 Travel				4,721.49
<b>Total Other Purchased Services</b>				<b>\$4,721.49</b>
<b>Total 2610 Supervision of Operation and Maintenance of Plant Services</b>				<b>\$170,596.50</b>

**General Fund (10)**

	<u>Elementary</u>	<u>Secondary</u>	<u>Federal</u>	<u>Total</u>
<b>2611 Supervision of Operation and Maintenance of Plant Services – Head of Component</b>				
<b>100 <u>Personnel Services – Salaries</u></b>				
100 Personnel Services – Salaries				99,261.72
<b>Total Personnel Services – Salaries</b>				<b>\$99,261.72</b>
<b>200 <u>Personnel Services – Employee Benefits</u></b>				
210 Group Insurance – Contracted Provider				26,246.56
220 Social Security Contributions				7,440.91
230 PSERS Retirement Contributions				32,498.95
260 Workers' Compensation				426.87
<b>Total Personnel Services – Employee Benefits</b>				<b>\$66,613.29</b>
<b>500 <u>Other Purchased Services</u></b>				
580 Travel				4,721.49
<b>Total Other Purchased Services</b>				<b>\$4,721.49</b>
<b>Total 2611 Supervision of Operation and Maintenance of Plant Services – Head of Component</b>				<b>\$170,596.50</b>

**General Fund (10)**

	<u>Elementary</u>	<u>Secondary</u>	<u>Federal</u>	<u>Total</u>
<b>2620 Operation of Buildings Services</b>				
<b>100 Personnel Services – Salaries</b>				
100 Personnel Services – Salaries				1,482,535.85
<b>Total Personnel Services – Salaries</b>				<b>\$1,482,535.85</b>
<b>200 Personnel Services – Employee Benefits</b>				
210 Group Insurance – Contracted Provider				464,880.05
220 Social Security Contributions				111,552.27
230 PSERS Retirement Contributions				491,520.86
260 Workers' Compensation				6,382.15
<b>Total Personnel Services – Employee Benefits</b>				<b>\$1,074,335.33</b>
<b>400 Purchased Property Services</b>				
410 Cleaning Services				20,689.95
420 Utility Services				164,510.03
430 Repairs and Maintenance Services				479,682.71
440 Rentals				13,076.24
460 Extermination Services				19,687.00
<b>Total Purchased Property Services</b>				<b>\$697,645.93</b>
<b>500 Other Purchased Services</b>				
523 General Property and Liability Insurance				228,788.00
530 Communications				45,509.87
580 Travel				5,745.64
<b>Total Other Purchased Services</b>				<b>\$280,043.51</b>
<b>600 Supplies</b>				
610 General Supplies	211,317.38	239,271.93		450,589.31
620 Energy				549,749.05
<b>Total Supplies</b>	<b>\$211,317.38</b>	<b>\$239,271.93</b>		<b>\$1,000,338.36</b>
<b>700 Property</b>				
752 Capital Equipment – Original and Additional				80,528.75
<b>Total Property</b>				<b>\$80,528.75</b>
<b>800 Other Objects</b>				
810 Dues and Fees				550.00
<b>Total Other Objects</b>				<b>\$550.00</b>
<b>Total 2620 Operation of Buildings Services</b>	<b>\$211,317.38</b>	<b>\$239,271.93</b>		<b>\$4,615,977.73</b>

General Fund (10)

2630 Care and Upkeep of Grounds Services

Elementary

Secondary

Federal

Total

400 Purchased Property Services

410 Cleaning Services

66,327.60

430 Repairs and Maintenance Services

24,550.00

**Total Purchased Property Services**

**\$90,877.60**

**Total 2630 Care and Upkeep of Grounds Services**

**\$90,877.60**

**General Fund (10)**

	<u>Elementary</u>	<u>Secondary</u>	<u>Federal</u>	<u>Total</u>
<b>2660 Safety and Security Services</b>				
<b>100 Personnel Services – Salaries</b>				
100 Personnel Services – Salaries				275,387.69
<b>Total Personnel Services – Salaries</b>				<b>\$275,387.69</b>
<b>200 Personnel Services – Employee Benefits</b>				
220 Social Security Contributions				21,066.75
230 PSERS Retirement Contributions				93,631.90
260 Workers' Compensation				1,184.37
<b>Total Personnel Services – Employee Benefits</b>				<b>\$115,883.02</b>
<b>300 Purchased Professional and Technical Services</b>				
350 Security / Safety Services				99,393.02
<b>Total Purchased Professional and Technical Services</b>				<b>\$99,393.02</b>
<b>600 Supplies</b>				
610 General Supplies	25,581.77	7,201.48		32,783.25
650 Supplies & Fees – Technology Related				50,262.34
<b>Total Supplies</b>	<b>\$25,581.77</b>	<b>\$7,201.48</b>		<b>\$83,045.59</b>
<b>Total 2660 Safety and Security Services</b>	<b>\$25,581.77</b>	<b>\$7,201.48</b>		<b>\$573,709.32</b>

General Fund (10)

2700 Student Transportation Services

Elementary

Secondary

Federal

Total

500 Other Purchased Services

511 Student Transportation Services from Another LEA Within the State

108,987.04

513 Contracted Carriers

2,908,656.77

516 Student Transportation Services From the IU

526.13

**Total Other Purchased Services**

**\$3,018,169.94**

**Total 2700 Student Transportation Services**

**\$3,018,169.94**

General Fund (10)

2720 Vehicle Operation Services

Elementary

Secondary

Federal

Total

500 Other Purchased Services

511 Student Transportation Services from Another LEA Within the State

108,987.04

513 Contracted Carriers

2,720,228.78

516 Student Transportation Services From the IU

526.13

**Total Other Purchased Services**

**\$2,829,741.95**

**Total 2720 Vehicle Operation Services**

**\$2,829,741.95**

General Fund (10)

	<u>Elementary</u>	<u>Secondary</u>	<u>Federal</u>	<u>Total</u>
<b>2750 Nonpublic Transportation</b>				
<b>500 <u>Other Purchased Services</u></b>				
513 Contracted Carriers				188,427.99
<b>Total Other Purchased Services</b>				<b>\$188,427.99</b>
<b>Total 2750 Nonpublic Transportation</b>				<b>\$188,427.99</b>



**General Fund (10)**

**2800 Support Services – Central**

Elementary

Secondary

Federal

Total

**100 Personnel Services – Salaries**

100 Personnel Services – Salaries

192,574.00

**Total Personnel Services – Salaries**

**\$192,574.00**

**200 Personnel Services – Employee Benefits**

210 Group Insurance – Contracted Provider

27,144.82

220 Social Security Contributions

14,565.05

230 PSERS Retirement Contributions

61,564.03

240 Tuition Reimbursement

3,402.00

260 Workers' Compensation

828.16

**Total Personnel Services – Employee Benefits**

**\$107,504.06**

**300 Purchased Professional and Technical Services**

330 Other Professional Services

3,299.90

360 Employee Training and Development Services

37,955.01

**Total Purchased Professional and Technical Services**

**\$41,254.91**

**500 Other Purchased Services**

549 Other Advertising/Public Relations

9,437.66

550 Printing and Binding

18,912.09

580 Travel

17,467.35

**Total Other Purchased Services**

**\$45,817.10**

**600 Supplies**

610 General Supplies

3,071.48

650 Supplies & Fees – Technology Related

13,404.30

**Total Supplies**

**\$16,475.78**

**800 Other Objects**

810 Dues and Fees

3,175.00

**Total Other Objects**

**\$3,175.00**

**Total 2800 Support Services – Central**

**\$406,800.85**

General Fund (10)

2820 Information Services

Elementary

Secondary

Federal

Total

500 Other Purchased Services

550 Printing and Binding

18,912.09

**Total Other Purchased Services**

**\$18,912.09**

**Total 2820 Information Services**

**\$18,912.09**

General Fund (10)

2823 Public Information Services

Elementary

Secondary

Federal

Total

500 Other Purchased Services

550 Printing and Binding

18,912.09

**Total Other Purchased Services**

**\$18,912.09**

**Total 2823 Public Information Services**

**\$18,912.09**

**General Fund (10)**

**2830 Staff Services**

	<u>Elementary</u>	<u>Secondary</u>	<u>Federal</u>	<u>Total</u>
<b>100 Personnel Services – Salaries</b>				
100 Personnel Services – Salaries				192,574.00
<b>Total Personnel Services – Salaries</b>				<b>\$192,574.00</b>
<b>200 Personnel Services – Employee Benefits</b>				
210 Group Insurance – Contracted Provider				27,144.82
220 Social Security Contributions				14,565.05
230 PSERS Retirement Contributions				61,564.03
240 Tuition Reimbursement				3,402.00
260 Workers' Compensation				828.16
<b>Total Personnel Services – Employee Benefits</b>				<b>\$107,504.06</b>
<b>300 Purchased Professional and Technical Services</b>				
330 Other Professional Services				3,299.90
360 Employee Training and Development Services				37,955.01
<b>Total Purchased Professional and Technical Services</b>				<b>\$41,254.91</b>
<b>500 Other Purchased Services</b>				
549 Other Advertising/Public Relations				9,437.66
580 Travel				17,467.35
<b>Total Other Purchased Services</b>				<b>\$26,905.01</b>
<b>600 Supplies</b>				
610 General Supplies				3,071.48
650 Supplies & Fees – Technology Related				13,404.30
<b>Total Supplies</b>				<b>\$16,475.78</b>
<b>800 Other Objects</b>				
810 Dues and Fees				3,175.00
<b>Total Other Objects</b>				<b>\$3,175.00</b>
<b>Total 2830 Staff Services</b>				<b>\$387,888.76</b>

General Fund (10)

2831 Supervision of Staff Services

Elementary

Secondary

Federal

Total

100 Personnel Services – Salaries

100 Personnel Services – Salaries

87,131.53

**Total Personnel Services – Salaries**

**\$87,131.53**

200 Personnel Services – Employee Benefits

220 Social Security Contributions

6,715.05

230 PSERS Retirement Contributions

26,029.95

260 Workers' Compensation

374.71

**Total Personnel Services – Employee Benefits**

**\$33,119.71**

**Total 2831 Supervision of Staff Services**

**\$120,251.24**

**General Fund (10)**

**2832 Recruitment and Placement Services**

Elementary

Secondary

Federal

Total

**100 Personnel Services – Salaries**

100 Personnel Services – Salaries

105,442.47

**Total Personnel Services – Salaries**

**\$105,442.47**

**200 Personnel Services – Employee Benefits**

210 Group Insurance – Contracted Provider

27,144.82

220 Social Security Contributions

7,850.00

230 PSERS Retirement Contributions

35,534.08

260 Workers' Compensation

453.45

**Total Personnel Services – Employee Benefits**

**\$70,982.35**

**500 Other Purchased Services**

549 Other Advertising/Public Relations

9,437.66

580 Travel

309.65

**Total Other Purchased Services**

**\$9,747.31**

**600 Supplies**

610 General Supplies

3,071.48

650 Supplies & Fees – Technology Related

13,404.30

**Total Supplies**

**\$16,475.78**

**800 Other Objects**

810 Dues and Fees

3,175.00

**Total Other Objects**

**\$3,175.00**

**Total 2832 Recruitment and Placement Services**

**\$205,822.91**

General Fund (10)

	<u>Elementary</u>	<u>Secondary</u>	<u>Federal</u>	<u>Total</u>
<b>2834 Staff Development Services – Non-Instructional, Certified Staff Only</b>				
<b>200 Personnel Services – Employee Benefits</b>				
240 Tuition Reimbursement				3,402.00
<b>Total Personnel Services – Employee Benefits</b>				<b>\$3,402.00</b>
<b>300 Purchased Professional and Technical Services</b>				
360 Employee Training and Development Services				14,086.80
<b>Total Purchased Professional and Technical Services</b>				<b>\$14,086.80</b>
<b>500 Other Purchased Services</b>				
580 Travel				5,472.33
<b>Total Other Purchased Services</b>				<b>\$5,472.33</b>
<b>Total 2834 Staff Development Services – Non-Instructional, Certified Staff Only</b>				<b>\$22,961.13</b>

General Fund (10)

2835 Health Services

Elementary

Secondary

Federal

Total

300 Purchased Professional and Technical Services

330 Other Professional Services

3,299.90

**Total Purchased Professional and Technical Services**

**\$3,299.90**

**Total 2835 Health Services**

**\$3,299.90**



General Fund (10)

	<u>Elementary</u>	<u>Secondary</u>	<u>Federal</u>	<u>Total</u>
<b>2836 Staff Development Services – Non-Instructional, Non-Certified Staff Only</b>				
<b>300 <u>Purchased Professional and Technical Services</u></b>				
360 Employee Training and Development Services				23,868.21
<b>Total Purchased Professional and Technical Services</b>				<b>\$23,868.21</b>
<b>500 <u>Other Purchased Services</u></b>				
580 Travel				11,685.37
<b>Total Other Purchased Services</b>				<b>\$11,685.37</b>
<b>Total 2836 Staff Development Services – Non-Instructional, Non-Certified Staff Only</b>				<b>\$35,553.58</b>

General Fund (10)

2900 Other Support Services

Elementary

Secondary

Federal

Total

500 Other Purchased Services

595 IU Payments By Withholding

24,180.28

**Total Other Purchased Services**

**\$24,180.28**

**Total 2900 Other Support Services**

**\$24,180.28**

General Fund (10)

2910 Support Services Not Listed Elsewhere In the 2000 Series

Elementary

Secondary

Federal

Total

500 Other Purchased Services

595 IU Payments By Withholding

24,180.28

**Total Other Purchased Services**

**\$24,180.28**

**Total 2910 Support Services Not Listed Elsewhere In the 2000 Series**

**\$24,180.28**

**General Fund (10)**

**3000 Operation of Non-Instructional Services**

**Total**

**100 Personnel Services – Salaries**

100 Personnel Services – Salaries 639,846.01

**Total Personnel Services – Salaries \$639,846.01**

**200 Personnel Services – Employee Benefits**

210 Group Insurance – Contracted Provider 46,566.86

220 Social Security Contributions 48,473.67

230 PSERS Retirement Contributions 205,936.73

260 Workers’ Compensation 2,751.63

**Total Personnel Services – Employee Benefits \$303,728.89**

**300 Purchased Professional and Technical Services**

310 Official / Administrative Services 47,754.36

330 Other Professional Services 35,860.00

350 Security / Safety Services 25,809.23

**Total Purchased Professional and Technical Services \$109,423.59**

**400 Purchased Property Services**

410 Cleaning Services 14,283.60

430 Repairs and Maintenance Services 7,199.38

440 Rentals 14,978.00

**Total Purchased Property Services \$36,460.98**

**500 Other Purchased Services**

510 Student Transportation Services 166,866.92

580 Travel 39,593.33

**Total Other Purchased Services \$206,460.25**

**600 Supplies**

610 General Supplies 217,589.90

630 Food 24,148.83

650 Supplies & Fees – Technology Related 79.90

**Total Supplies \$241,818.63**

**700 Property**

756 Capitalized Technology Equipment – Original 4,999.00

**Total Property \$4,999.00**

**800 Other Objects**

810 Dues and Fees 19,587.12

**Total Other Objects \$19,587.12**

**Total 3000 Operation of Non-Instructional Services \$1,562,324.47**

General Fund (10)

3200 Student Activities

Elementary

Secondary

Federal

Total

100 Personnel Services – Salaries

100 Personnel Services – Salaries

639,846.01

**Total Personnel Services – Salaries**

**\$639,846.01**

200 Personnel Services – Employee Benefits

210 Group Insurance – Contracted Provider

46,566.86

220 Social Security Contributions

48,473.67

230 PSERS Retirement Contributions

205,936.73

260 Workers' Compensation

2,751.63

**Total Personnel Services – Employee Benefits**

**\$303,728.89**

300 Purchased Professional and Technical Services

310 Official / Administrative Services

47,754.36

330 Other Professional Services

35,860.00

350 Security / Safety Services

25,809.23

**Total Purchased Professional and Technical Services**

**\$109,423.59**

400 Purchased Property Services

410 Cleaning Services

14,283.60

430 Repairs and Maintenance Services

7,199.38

440 Rentals

14,978.00

**Total Purchased Property Services**

**\$36,460.98**

500 Other Purchased Services

510 Student Transportation Services

166,866.92

580 Travel

39,593.33

**Total Other Purchased Services**

**\$206,460.25**

600 Supplies

610 General Supplies

216,584.05

630 Food

24,148.83

650 Supplies & Fees – Technology Related

79.90

**Total Supplies**

**\$240,812.78**

700 Property

756 Capitalized Technology Equipment – Original

4,999.00

**Total Property**

**\$4,999.00**

800 Other Objects

810 Dues and Fees

19,587.12

**Total Other Objects**

**\$19,587.12**

**Total 3200 Student Activities**

**\$1,561,318.62**

General Fund (10)

3300 Community Services

600 Supplies

610 General Supplies

	<u>Elementary</u>	<u>Secondary</u>	<u>Federal</u>	<u>Total</u>
<b>Total Supplies</b>			<b>1,005.85</b>	<b>1,005.85</b>
<b>Total 3300 Community Services</b>			<b>\$1,005.85</b>	<b>\$1,005.85</b>

**General Fund (10)**

**4000 Facilities Acquisition, Construction and Improvement Services**

**Total**

**300 Purchased Professional and Technical Services**

330 Other Professional Services

60,884.88

**Total Purchased Professional and Technical Services**

**\$60,884.88**

**400 Purchased Property Services**

450 Construction Services

54,393.43

**Total Purchased Property Services**

**\$54,393.43**

**700 Property**

762 Capitalized Equipment - Replacement

265,382.80

**Total Property**

**\$265,382.80**

**Total 4000 Facilities Acquisition, Construction and Improvement Services**

**\$380,661.11**

General Fund (10)

	<u>Elementary</u>	<u>Secondary</u>	<u>Federal</u>	<u>Total</u>
4400 Architecture and Engineering Services / Educational Specifications – Improvements				
300 <u>Purchased Professional and Technical Services</u>				
330 Other Professional Services				60,884.88
<b>Total Purchased Professional and Technical Services</b>				<b>\$60,884.88</b>
<b>Total 4400 Architecture and Engineering Services / Educational Specifications – Improvements</b>				<b>\$60,884.88</b>



**General Fund (10)**

	<u>Elementary</u>	<u>Secondary</u>	<u>Federal</u>	<u>Total</u>
<b>4600 Existing Building Improvement Services</b>				
<b>400 <u>Purchased Property Services</u></b>				
450 Construction Services				54,393.43
<b>Total Purchased Property Services</b>				<b>\$54,393.43</b>
<b>700 <u>Property</u></b>				
762 Capitalized Equipment - Replacement				265,382.80
<b>Total Property</b>				<b>\$265,382.80</b>
<b>Total 4600 Existing Building Improvement Services</b>				<b>\$319,776.23</b>

**General Fund (10)**

**5000 Other Expenditures and Financing Uses**

**Total**

**800 Other Objects**

880 Refunds of Prior Years' Receipts

77,459.17

**Total Other Objects**

**\$77,459.17**

**900 Other Uses of Funds**

932 Capital Reserve Fund Transfers Applicable To Fund 32

257,000.00

939 Other Fund Transfers

3,758,936.52

**Total Other Uses of Funds**

**\$4,015,936.52**

**Total 5000 Other Expenditures and Financing Uses**

**\$4,093,395.69**

General Fund (10)

5100 Debt Service / Other Expenditures and Financing Uses	<u>Elementary</u>	<u>Secondary</u>	<u>Federal</u>	<u>Total</u>
800 <u>Other Objects</u>				
880 Refunds of Prior Years' Receipts				77,459.17
<b>Total Other Objects</b>				<b>\$77,459.17</b>
<b>Total 5100 Debt Service / Other Expenditures and Financing Uses</b>				<b>\$77,459.17</b>

General Fund (10)

5130 Refund of Prior Year Revenues / Receipts	<u>Elementary</u>	<u>Secondary</u>	<u>Federal</u>	<u>Total</u>
800 <u>Other Objects</u>				
880 Refunds of Prior Years' Receipts				77,459.17
<b>Total Other Objects</b>				<b>\$77,459.17</b>
<b>Total 5130 Refund of Prior Year Revenues / Receipts</b>				<b>\$77,459.17</b>

General Fund (10)

5200 Interfund Transfers – Out

Elementary

Secondary

Federal

Total

900 Other Uses of Funds

932 Capital Reserve Fund Transfers Applicable To Fund 32

257,000.00

939 Other Fund Transfers

3,758,936.52

**Total Other Uses of Funds**

**\$4,015,936.52**

**Total 5200 Interfund Transfers – Out**

**\$4,015,936.52**

General Fund (10)

5230 Capital Projects Fund Transfers

Elementary

Secondary

Federal

Total

900 Other Uses of Funds

932 Capital Reserve Fund Transfers Applicable To Fund 32

257,000.00

939 Other Fund Transfers

520,000.00

**Total Other Uses of Funds**

**\$777,000.00**

**Total 5230 Capital Projects Fund Transfers**

**\$777,000.00**

General Fund (10)

5240 Debt Service Fund Transfers

Elementary

Secondary

Federal

Total

900 Other Uses of Funds

939 Other Fund Transfers

3,237,648.06

**Total Other Uses of Funds**

**\$3,237,648.06**

**Total 5240 Debt Service Fund Transfers**

**\$3,237,648.06**

General Fund (10)

5250 Enterprise Fund Transfers

Elementary

Secondary

Federal

Total

900 Other Uses of Funds

939 Other Fund Transfers

1,288.46

**Total Other Uses of Funds**

**\$1,288.46**

**Total 5250 Enterprise Fund Transfers**

**\$1,288.46**



LEA : 103023153 Elizabeth Forward SD

Printed 11/21/2024 2:47:12 PM

**Capital Reserve Fund - § 1431 (32)**

**2000 Support Services**

**700 Property**

762 Capitalized Equipment - Replacement

**Total Property**

**Total 2000 Support Services**

Total

8,836.10

**\$8,836.10**

**\$8,836.10**

Capital Reserve Fund - § 1431 (32)

2600 Operation and Maintenance of Plant Services

Elementary

Secondary

Federal

Total

700 Property

762 Capitalized Equipment - Replacement

8,836.10

**Total Property**

**\$8,836.10**

**Total 2600 Operation and Maintenance of Plant Services**

**\$8,836.10**

Capital Reserve Fund - § 1431 (32)

2620 Operation of Buildings Services

Elementary

Secondary

Federal

Total

700 Property

762 Capitalized Equipment - Replacement

8,836.10

<b>Total Property</b>				<b>\$8,836.10</b>
<b>Total 2620 Operation of Buildings Services</b>				<b>\$8,836.10</b>

**Capital Reserve Fund - § 1431 (32)**

**4000 Facilities Acquisition, Construction and Improvement Services**

Total

**300 Purchased Professional and Technical Services**

330 Other Professional Services

2,055,264.57

**Total Purchased Professional and Technical Services**

**\$2,055,264.57**

**400 Purchased Property Services**

450 Construction Services

122,586.45

**Total Purchased Property Services**

**\$122,586.45**

**700 Property**

762 Capitalized Equipment - Replacement

271,214.00

**Total Property**

**\$271,214.00**

**Total 4000 Facilities Acquisition, Construction and Improvement Services**

**\$2,449,065.02**

Capital Reserve Fund - § 1431 (32)

4200 Existing Site Improvement Services

Elementary

Secondary

Federal

Total

400 Purchased Property Services

450 Construction Services

122,586.45

**Total Purchased Property Services**

**\$122,586.45**

**Total 4200 Existing Site Improvement Services**

**\$122,586.45**

Capital Reserve Fund - § 1431 (32)

4500 Building Acquisition and Construction Services – Original and Additional

Elementary

Secondary

Federal

Total

300 Purchased Professional and Technical Services

330 Other Professional Services

2,055,264.57

**Total Purchased Professional and Technical Services**

**\$2,055,264.57**

**Total 4500 Building Acquisition and Construction Services – Original and Additional**

**\$2,055,264.57**

Capital Reserve Fund - § 1431 (32)

4600 Existing Building Improvement Services

Elementary

Secondary

Federal

Total

700 Property

762 Capitalized Equipment - Replacement

271,214.00

**Total Property**

**\$271,214.00**

**Total 4600 Existing Building Improvement Services**

**\$271,214.00**

**Other Capital Projects Fund (39)**

**2000 Support Services**

**400 Purchased Property Services**

440 Rentals	240,624.00
-------------	------------

<b>Total Purchased Property Services</b>	<b>\$240,624.00</b>
--	---------------------

<b>Total 2000 Support Services</b>	<b>\$240,624.00</b>
------------------------------------	---------------------



Other Capital Projects Fund (39)

2600 Operation and Maintenance of Plant Services

Elementary

Secondary

Federal

Total

400 Purchased Property Services

440 Rentals

240,624.00

**Total Purchased Property Services**

**\$240,624.00**

**Total 2600 Operation and Maintenance of Plant Services**

**\$240,624.00**

Other Capital Projects Fund (39)

2620 Operation of Buildings Services

Elementary

Secondary

Federal

Total

400 Purchased Property Services

440 Rentals

240,624.00

**Total Purchased Property Services**

**\$240,624.00**

**Total 2620 Operation of Buildings Services**

**\$240,624.00**

**Other Capital Projects Fund (39)**

**4000 Facilities Acquisition, Construction and Improvement Services**

**Total**

**300 Purchased Professional and Technical Services**

330 Other Professional Services

49,606.97

**Total Purchased Professional and Technical Services**

**\$49,606.97**

**Total 4000 Facilities Acquisition, Construction and Improvement Services**

**\$49,606.97**

Other Capital Projects Fund (39)

4500 Building Acquisition and Construction Services – Original and Additional

Elementary

Secondary

Federal

Total

300 Purchased Professional and Technical Services

330 Other Professional Services

49,606.97

**Total Purchased Professional and Technical Services**

**\$49,606.97**

**Total 4500 Building Acquisition and Construction Services – Original and Additional**

**\$49,606.97**

**Debt Service Fund (40)**

**2000 Support Services**

**800 Other Objects**

810 Dues and Fees

175,682.00

**Total Other Objects**

**\$175,682.00**

**Total 2000 Support Services**

**\$175,682.00**

Debt Service Fund (40)

2300 Support Services – Administration

Elementary

Secondary

Federal

Total

800 Other Objects

810 Dues and Fees

175,682.00

**Total Other Objects**

**\$175,682.00**

**Total 2300 Support Services – Administration**

**\$175,682.00**

Debt Service Fund (40)

2390 Other Administration Services

Elementary

Secondary

Federal

Total

800 Other Objects

810 Dues and Fees

175,682.00

**Total Other Objects**

**\$175,682.00**

**Total 2390 Other Administration Services**

**\$175,682.00**

Debt Service Fund (40)

5000 Other Expenditures and Financing Uses

Total

800 Other Objects

830 Interest	2,256,989.00
880 Refunds of Prior Years' Receipts	8,828.00

<b>Total Other Objects</b>	<b>\$2,265,817.00</b>
----------------------------	-----------------------

900 Other Uses of Funds

910 Redemption of Principal	980,659.00
939 Other Fund Transfers	9,706,297.00
990 Miscellaneous Other Uses of Funds	118,019.00

<b>Total Other Uses of Funds</b>	<b>\$10,804,975.00</b>
----------------------------------	------------------------

<b>Total 5000 Other Expenditures and Financing Uses</b>	<b>\$13,070,792.00</b>
---	------------------------



Debt Service Fund (40)

5100 Debt Service / Other Expenditures and Financing Uses	<u>Elementary</u>	<u>Secondary</u>	<u>Federal</u>	<u>Total</u>
<b>800 Other Objects</b>				
830 Interest				2,256,989.00
880 Refunds of Prior Years' Receipts				8,828.00
<b>Total Other Objects</b>				<b>\$2,265,817.00</b>
<b>900 Other Uses of Funds</b>				
910 Redemption of Principal				980,659.00
990 Miscellaneous Other Uses of Funds				118,019.00
<b>Total Other Uses of Funds</b>				<b>\$1,098,678.00</b>
<b>Total 5100 Debt Service / Other Expenditures and Financing Uses</b>				<b>\$3,364,495.00</b>

Debt Service Fund (40)

	<u>Elementary</u>	<u>Secondary</u>	<u>Federal</u>	<u>Total</u>
<b>5110 Debt Service</b>				
<b>800 Other Objects</b>				
830 Interest				2,256,989.00
<b>Total Other Objects</b>				<b>\$2,256,989.00</b>
<b>900 Other Uses of Funds</b>				
910 Redemption of Principal				980,659.00
<b>Total Other Uses of Funds</b>				<b>\$980,659.00</b>
<b>Total 5110 Debt Service</b>				<b>\$3,237,648.00</b>

Debt Service Fund (40)

5130 Refund of Prior Year Revenues / Receipts

Elementary

Secondary

Federal

Total

800 Other Objects

880 Refunds of Prior Years' Receipts

8,828.00

**Total Other Objects**

**\$8,828.00**

**Total 5130 Refund of Prior Year Revenues / Receipts**

**\$8,828.00**

Debt Service Fund (40)

5150 Bond Discounts

Elementary

Secondary

Federal

Total

900 Other Uses of Funds

990 Miscellaneous Other Uses of Funds

118,019.00

**Total Other Uses of Funds**

**\$118,019.00**

**Total 5150 Bond Discounts**

**\$118,019.00**

Debt Service Fund (40)

5200 Interfund Transfers – Out

Elementary

Secondary

Federal

Total

900 Other Uses of Funds

939 Other Fund Transfers

9,706,297.00

**Total Other Uses of Funds**

**\$9,706,297.00**

**Total 5200 Interfund Transfers – Out**

**\$9,706,297.00**

Debt Service Fund (40)

5230 Capital Projects Fund Transfers

Elementary

Secondary

Federal

Total

900 Other Uses of Funds

939 Other Fund Transfers

9,706,297.00

**Total Other Uses of Funds**

**\$9,706,297.00**

**Total 5230 Capital Projects Fund Transfers**

**\$9,706,297.00**

	<u>General Fund(10)</u>	<u>Student Sponsored Activity Fund(21)</u>	<u>Public Purpose Trust(27)</u>	<u>Other Compt Approved (28)</u>	<u>Athletic / Activity(29)</u>
<b>1000 Instruction</b>					
1100 Regular Programs - Elementary / Secondary	19,071,178.24				
1200 Special Programs - Elementary / Secondary	6,898,595.14				
1300 Vocational Education	2,204,479.41				
1400 Other Instructional Programs - Elementary / Secondary	181,256.90				
1500 Nonpublic School Programs	3,975.00				
<b>Total Instruction</b>	<b>\$28,359,484.69</b>				
<b>2000 Support Services</b>					
2100 Support Services - Students	1,535,860.00				
2200 Support Services - Instructional Staff	2,056,315.84				
2300 Support Services - Administration	3,056,406.37				
2400 Support Services - Pupil Health	679,958.65				
2500 Support Services - Business	703,934.78				
2600 Operation and Maintenance of Plant Services	5,451,161.15				
2700 Student Transportation Services	3,018,169.94				
2800 Support Services - Central	406,800.85				
2900 Other Support Services	24,180.28				
<b>Total Support Services</b>	<b>\$16,932,787.86</b>				
<b>3000 Operation of Non-Instructional Services</b>					
3200 Student Activities	1,561,318.62				
3300 Community Services	1,005.85				
<b>Total Operation of Non-Instructional Services</b>	<b>\$1,562,324.47</b>				
<b>4000 Facilities Acquisition, Construction and Improvement Services</b>					
4200 Existing Site Improvement Services					
4400 Architecture and Engineering Services / Educational Specifications - Improvements	60,884.88				
4500 Building Acquisition and Construction Services - Original and Additional					
4600 Existing Building Improvement Services	319,776.23				
<b>Total Facilities Acquisition, Construction and Improvement Services</b>	<b>\$380,661.11</b>				
<b>5000 Other Expenditures and Financing Uses</b>					
5100 Debt Service / Other Expenditures and Financing Uses	77,459.17				
5200 Interfund Transfers - Out	4,015,936.52				
<b>Total Other Expenditures and Financing Uses</b>	<b>\$4,093,395.69</b>				
<b>TOTAL ACTUAL EXPENDITURES &amp; OTHER FINANCING USES</b>	<b>\$51,328,653.82</b>				

	<u>Capital Reserve (690.1850)(31)</u>	<u>Capital Reserve (1431)(32)</u>	<u>Other Capital Projects Fund(39)</u>	<u>Debt Service(40)</u>	<u>Permanent(90)</u>
<b>1000 Instruction</b>					
1100 Regular Programs - Elementary / Secondary					
1200 Special Programs - Elementary / Secondary					
1300 Vocational Education					
1400 Other Instructional Programs - Elementary / Secondary					
1500 Nonpublic School Programs					
<b>Total Instruction</b>					
<b>2000 Support Services</b>					
2100 Support Services - Students					
2200 Support Services - Instructional Staff					
2300 Support Services - Administration				175,682.00	
2400 Support Services - Pupil Health					
2500 Support Services - Business					
2600 Operation and Maintenance of Plant Services		8,836.10	240,624.00		
2700 Student Transportation Services					
2800 Support Services - Central					
2900 Other Support Services					
<b>Total Support Services</b>		<b>\$8,836.10</b>	<b>\$240,624.00</b>	<b>\$175,682.00</b>	
<b>3000 Operation of Non-Instructional Services</b>					
3200 Student Activities					
3300 Community Services					
<b>Total Operation of Non-Instructional Services</b>					
<b>4000 Facilities Acquisition, Construction and Improvement Services</b>					
4200 Existing Site Improvement Services		122,586.45			
4400 Architecture and Engineering Services / Educational Specifications - Improvements					
4500 Building Acquisition and Construction Services - Original and Additional		2,055,264.57	49,606.97		
4600 Existing Building Improvement Services		271,214.00			
<b>Total Facilities Acquisition, Construction and Improvement Services</b>		<b>\$2,449,065.02</b>	<b>\$49,606.97</b>		
<b>5000 Other Expenditures and Financing Uses</b>					
5100 Debt Service / Other Expenditures and Financing Uses				3,364,495.00	
5200 Interfund Transfers - Out				9,706,297.00	
<b>Total Other Expenditures and Financing Uses</b>				<b>\$13,070,792.00</b>	
<b>TOTAL ACTUAL EXPENDITURES &amp; OTHER FINANCING USES</b>		<b>\$2,457,901.12</b>	<b>\$290,230.97</b>	<b>\$13,246,474.00</b>	



**Total**

<b>1000 Instruction</b>	
1100 Regular Programs - Elementary / Secondary	19,071,178.24
1200 Special Programs - Elementary / Secondary	6,898,595.14
1300 Vocational Education	2,204,479.41
1400 Other Instructional Programs - Elementary / Secondary	181,256.90
1500 Nonpublic School Programs	3,975.00
<b>Total Instruction</b>	<b>\$28,359,484.69</b>
<b>2000 Support Services</b>	
2100 Support Services - Students	1,535,860.00
2200 Support Services - Instructional Staff	2,056,315.84
2300 Support Services - Administration	3,232,088.37
2400 Support Services - Pupil Health	679,958.65
2500 Support Services - Business	703,934.78
2600 Operation and Maintenance of Plant Services	5,700,621.25
2700 Student Transportation Services	3,018,169.94
2800 Support Services - Central	406,800.85
2900 Other Support Services	24,180.28
<b>Total Support Services</b>	<b>\$17,357,929.96</b>
<b>3000 Operation of Non-Instructional Services</b>	
3200 Student Activities	1,561,318.62
3300 Community Services	1,005.85
<b>Total Operation of Non-Instructional Services</b>	<b>\$1,562,324.47</b>
<b>4000 Facilities Acquisition, Construction and Improvement Services</b>	
4200 Existing Site Improvement Services	122,586.45
4400 Architecture and Engineering Services / Educational Specifications - Improvements	60,884.88
4500 Building Acquisition and Construction Services - Original and Additional	2,104,871.54
4600 Existing Building Improvement Services	590,990.23
<b>Total Facilities Acquisition, Construction and Improvement Services</b>	<b>\$2,879,333.10</b>
<b>5000 Other Expenditures and Financing Uses</b>	
5100 Debt Service / Other Expenditures and Financing Uses	3,441,954.17
5200 Interfund Transfers - Out	13,722,233.52
<b>Total Other Expenditures and Financing Uses</b>	<b>\$17,164,187.69</b>
<b>TOTAL ACTUAL EXPENDITURES &amp; OTHER FINANCING USES</b>	<b>\$67,323,259.91</b>

**PSERS Salary Data (Salary Data should relate to the General Fund only)**

<b>Amount Description</b>	<b>Amount</b>
Total Salary Base for salaries subject to PSERS withholding	20,765,806.06
Total Federally Funded salaries subject to PSERS withholding	705,001.10
	<hr/>

**Title I Expenditure Data**

<b>Amount Description</b>	<b>Amount</b>
Expenditures Funded with Current Title I Funds	378,951.00
<b>Total Title I Expenditure Data</b>	<b>\$378,951.00</b>
	<hr/>

**Title IV Revenue Data**

<b>Amount Description</b>	<b>Amount</b>
Revenue from Title IV-A-1: Student Support and Academic Enrichment Grants	26,896.00
	<hr/>

1.	<b><u>Current Special Education Expenditures within Function 1000</u></b> See list of exclusions in the note below.	5,541,119.83
2.	<b><u>Current Special Education Expenditures within Function 2000</u></b> See list of exclusions in the note below.	1,193,714.34
2A.	<b><u>Current Special Education Expenditures within Sub-Function 2100</u></b> This data should also be included in line 2 above. See list of exclusions in the note below.	382,892.77
2B.	<b><u>Current Special Education Expenditures within Sub-Function 2200</u></b> This data should also be included in line 2 above. See list of exclusions in the note below.	250,244.26
2C.	<b><u>Current Special Education Expenditures within Sub-Function 2700</u></b> This data should also be included in line 2 above. See list of exclusions in the note below.	560,577.31
3.	<b><u>Current Special Education Expenditures within Sub-Function 3100</u></b> See list of exclusions in the note below.	
4.	<b><u>Current Special Education Expenditures within Sub-Function 3200</u></b> See list of exclusions in the note below.	

Note: The Current Special Education Expenditure amounts for each line should be calculated as follows:

- \* Include the total expenditures for special education costs from all governmental funds and the food service fund 51 for the function/sub-function requested
- \* Exclude data from sub-functions: 1243,1450,1500,1600,1807,2280,2450,2750,2990
- \* Exclude data from objects: 322,511,512,516,561,562,564,566,592,593,594,595,596,597,700,830,899

**Benefits for Staff Relative to Collective Bargaining Agreements**

	OBJECT	COVERED	NOT COVERED	TOTAL
<b>10 General Fund</b>	No Self Insurance data to report			
	211 Medical Insurance	3,954,226.00	435,457.00	4,389,683.00
	212 Dental Insurance	199,538.00	22,665.00	222,203.00
	215 Eye Care Insurance		3,746.00	3,746.00
	216 Prescription Insurance			
	271 Self-Insurance Medical Benefits			
	272 Self-Insurance Dental Benefits			
	275 Self-Insurance Eye Care Benefits			
	276 Self-Insurance Prescription Benefits			
	<b>FUND TOTAL</b>		<b>\$4,153,764.00</b>	<b>\$461,868.00</b>
<b>50 Enterprise Fund</b>	No Self Insurance data to report			
	211 Medical Insurance			
	212 Dental Insurance			
	215 Eye Care Insurance			
	216 Prescription Insurance			
	271 Self-Insurance Medical Benefits			
	272 Self-Insurance Dental Benefits			
	275 Self-Insurance Eye Care Benefits			
	276 Self-Insurance Prescription Benefits			
	<b>FUND TOTAL</b>			
<b>60 Internal Service Fund</b>	No Self Insurance data to report			
	211 Medical Insurance			
	212 Dental Insurance			
	215 Eye Care Insurance			
	216 Prescription Insurance			
	271 Self-Insurance Medical Benefits			
	272 Self-Insurance Dental Benefits			
	275 Self-Insurance Eye Care Benefits			
	276 Self-Insurance Prescription Benefits			
	<b>FUND TOTAL</b>			
<b>Total of All Funds</b>		<b>\$4,153,764.00</b>	<b>\$461,868.00</b>	<b>\$4,615,632.00</b>

LEA : 103023153 Elizabeth Forward SD

Printed 11/21/2024 2:48:23 PM

Function	Special Education (Prior Year)	Nonspecial Education (Prior Year)	Total (Prior Year)	Special Education (Current Year)	Nonspecial Education (Current Year)	Total (Current Year)
2120 Guidance Services	153,921.51	630,192.12	784,113.63	203,508.30	802,962.01	1,006,470.31
2140 Psychological Services	71,844.65	294,149.50	365,994.15	77,420.92	305,471.85	382,892.77
2150 Speech Pathology and Audiology Services						
2160 Social Work Services	12,569.74	51,463.60	64,033.34	2,382.59	9,400.74	11,783.33
2260 Instruction and Curriculum Development Services	135,524.03	554,868.36	690,392.39	144,603.98	570,549.21	715,153.19
2350 Legal and Accounting Services	14,762.53	60,441.37	75,203.90	17,222.87	67,954.54	85,177.41
2420 Medical Services	2,332.00	9,547.79	11,879.79	2,462.15	9,714.65	12,176.80
2440 Nursing Services	111,335.85	455,836.10	567,171.95	133,525.47	526,837.88	660,363.35
2700 Student Transportation Services	518,347.38	2,122,041.79	2,640,389.17	573,037.39	2,260,975.44	2,834,012.83
<b>Total</b>	<b>\$1,020,637.69</b>	<b>\$4,178,540.63</b>	<b>\$5,199,178.32</b>	<b>\$1,154,163.67</b>	<b>\$4,553,866.32</b>	<b>\$5,708,029.99</b>

(PRINCIPAL AMOUNTS ONLY)

**GOVERNMENTAL FUNDS/ ACTIVITIES**

	Short-Term Borrowing	General Obligation Bonds/Notes	Authority Building Obligations	Leases, Other Right to Use Arrangements	Extended Term Financing Agreements	Other Long Term Debt/Liabilities	OPEB, Comp Abs, Net Pension Liab	Total
1. Debt at Beginning of Fiscal Year		21,669,250.56				2,410,304.00	63,040,282.00	87,119,836.56
2. Additional Debt Incurred During Year		10,000,000.00					56,345,168.00	66,345,168.00
3. Retirements and Repayments		975,658.46				73,216.00	57,307,000.00	58,355,874.46
4. Debt at End of Fiscal Year		30,693,592.10				2,337,088.00	62,078,450.00	95,109,130.10
5. Accreted Interest at End Of Fiscal Year		9,236,407.54						9,236,407.54
6. Total Debt and Accreted Interest		39,929,999.64				2,337,088.00	62,078,450.00	104,345,537.64
7. Current Portion P&I - Due within 1 year		5,741,827.10				187,111.60		5,928,938.70
8. Interest Paid during current fiscal year		2,256,980.60				113,906.00		2,370,886.60

(PRINCIPAL AMOUNTS ONLY)

**PROPRIETARY FUNDS**

- 1. Debt at Beginning of Fiscal Year
- 2. Additional Debt Incurred During Year
- 3. Retirements and Repayments
- 4. Debt at End of Fiscal Year
- 5. Accreted Interest at End Of Fiscal Year
- 6. Total Debt and Accreted Interest
- 7. Current Portion P&I - Due within 1 year
- 8. Interest Paid during current fiscal year

**Total Principal and Interest Payments Made by Your School - All Funds**

Function	Fund		Principal (910)	Principal (920)	Interest (830)	Total (Principal +Interest)	Misc Other Uses (990)
5110	10	General Fund					
5110	20	Special Revenue Funds					
5110	30	Capital Projects Funds					
5110	40	Debt Service Fund	980,659.00		2,256,989.00	3,237,648.00	
5110	90	Permanent Fund					
5120	10	General Fund					
5120	20	Special Revenue Funds					
5120	30	Capital Projects Funds					
5120	40	Debt Service Fund					
5140	10	General Fund					
5140	20	Special Revenue Funds					
5140	30	Capital Projects Funds					
5140	40	Debt Service Fund					
5140	90	Permanent Fund					
<b>Total Debt Payments - Governmental Funds</b>			<b>\$980,659.00</b>		<b>\$2,256,989.00</b>	<b>\$3,237,648.00</b>	

Function	Fund		Principal (910)	Principal (920)	Interest (830)	Total (Principal +Interest)
5110	50	Enterprise Fund				
5110	60	Internal Service Fund				
5120	50	Enterprise Fund				
5120	60	Internal Service Fund				
5140	50	Enterprise Fund				
5140	60	Internal Service Fund				
<b>Total Debt Payments - Proprietary Funds</b>						

**Debt Details**  
**Governmental Funds/ Activities**

Debt Category	Debt Issue Date (MM/YYYY)	Principal Amounts Only			Debt at End of Fiscal Year	Current Portion Due Within One Year (Principal and Interest)	Interest Paid During Fiscal Year
		Debt at Beginning of Fiscal Year	Additions	Reductions / Repayments			
General Obligation Bonds/Notes – CIB	12/2023		10,000,000.00		10,000,000.00	409,325.00	71,895.56
General Obligation Bonds/Notes – CIB	08/2021	7,085,000.00		440,000.00	6,645,000.00	573,450.00	137,300.00
General Obligation Bonds/Notes – CIB	09/2021	2,580,000.00		20,000.00	2,560,000.00	68,375.00	48,766.00
General Obligation Bonds/Notes – CIB	09/2021	1,780,000.00		10,000.00	1,770,000.00	49,725.00	34,975.00
General Obligation Bonds/Notes – CIB	07/2020	4,850,000.00		70,000.00	4,780,000.00	182,702.50	109,877.50
General Obligation Bonds/Notes – CIB	07/2020	2,955,000.00		55,000.00	2,900,000.00	108,250.00	59,825.00
General Obligation Bonds/Notes – CAB	09/1999	1,325,877.76		1,255.66	1,324,622.10	5,000.00	3,744.34
General Obligation Bonds/Notes – CAB	07/1995	1,093,372.80		379,402.80	713,970.00	4,344,999.60	1,790,597.20
Other Long Term Debt/Liabilities		2,410,304.00		73,216.00	2,337,088.00	187,111.60	113,906.00
Compensated Absences		946,935.00	25,934.00		972,869.00		
Other Post-Employment Benefits (OPEB)		4,875,347.00	222,234.00	89,000.00	5,008,581.00		
Net Pension Liability		57,218,000.00	56,097,000.00	57,218,000.00	56,097,000.00		
<b>Totals for Debt Entered:</b>		<b>\$87,119,836.56</b>	<b>\$66,345,168.00</b>	<b>\$58,355,874.46</b>	<b>\$95,109,130.10</b>	<b>\$5,928,938.70</b>	<b>\$2,370,886.60</b>



**Accreted Interest Detail**  
**Governmental Funds/ Activities**

Debt Category	Debt Issue Date (MM/YYYY)	Beginning Accreted Interest	Additions	Reductions	Ending Accreted Interest	Ending bond Principal	Ending Principal Plus Accreted Interest
General Obligation Bonds/Notes – CAB	09/1999	5,609,122.28		3,744.34	5,605,377.94	1,324,622.10	6,930,000.04
General Obligation Bonds/Notes – CAB	07/1995	5,421,626.80		1,790,597.20	3,631,029.60	713,970.00	4,344,999.60
<b>Totals for Debt Entered:</b>		<b>\$11,030,749.08</b>		<b>\$1,794,341.54</b>	<b>\$9,236,407.54</b>	<b>\$2,038,592.10</b>	<b>\$11,274,999.64</b>

**General Fund (10)**

**Section 1: Tuition/Purchased Services as Reported within Expenditure Detail**

	Amount
Tuition Reported in General Fund Expenditures 1000-560	2,195,065.93
Purchased Services in General Fund Expenditures 1000-594 and 1000-597	
<b>Section 1 Total</b>	<b>\$2,195,065.93</b>

**Section 2: Tuition Paid to Institution Types During Fiscal Year**

	Tuition Paid For Nonspecial Education	Tuition Paid For Special Education	Total
1 1306 Institutions			
2 Institutionalized Children's Programs			
3 Juveniles Incarcerated in Adult Facilities			
4 Residential Treatment Facilities			
5 Other Local Education Agencies	26,206.46	6,633.71	32,840.17
6 Brick and Mortar Charter Schools	253,313.65	128,575.94	381,889.59
7 Cyber Charter Schools	366,281.53	309,736.72	676,018.25
8 Career and Technology Centers	700,101.46	177,218.67	877,320.13
9 Approved Private Schools	181,144.23	45,853.56	226,997.79
10 PA Chartered Schools for the Deaf and Blind			
11 Private Residential Rehabilitative Institutions			
12 Juvenile Detention Centers			
13 Special Program Jointures			
14 Other Tuition Not Included Elsewhere In This Section			
<b>Section 2 Total</b>	<b>\$1,527,047.33</b>	<b>\$668,018.60</b>	<b>\$2,195,065.93</b>

**Food Service / Cafeteria Operations Fund (51)**

**3000 Operation of Non-Instructional Services**

**Total**

**500 Other Purchased Services**

570 Food Service Management 1,010,530.59

**Total Other Purchased Services \$1,010,530.59**

**600 Supplies**

610 General Supplies 81,628.88

630 Food 105,157.91

650 Supplies & Fees – Technology Related 10,260.00

**Total Supplies \$197,046.79**

**700 Property**

740 Depreciation 12,238.47

**Total Property \$12,238.47**

**800 Other Objects**

810 Dues and Fees 698.00

**Total Other Objects \$698.00**

**900 Other Uses of Funds**

900 Other Uses of Funds 2,953.80

**Total Other Uses of Funds \$2,953.80**

**Total 3000 Operation of Non-Instructional Services \$1,223,467.65**

Food Service / Cafeteria Operations Fund (51)

	<u>Elementary</u>	<u>Secondary</u>	<u>Federal</u>	<u>Total</u>
<b>3100 Food Services</b>				
<b>500 Other Purchased Services</b>				
570 Food Service Management				1,010,530.59
<b>Total Other Purchased Services</b>				<b>\$1,010,530.59</b>
<b>600 Supplies</b>				
610 General Supplies				81,628.88
630 Food				105,157.91
650 Supplies & Fees – Technology Related				10,260.00
<b>Total Supplies</b>				<b>\$197,046.79</b>
<b>700 Property</b>				
740 Depreciation				12,238.47
<b>Total Property</b>				<b>\$12,238.47</b>
<b>800 Other Objects</b>				
810 Dues and Fees				698.00
<b>Total Other Objects</b>				<b>\$698.00</b>
<b>900 Other Uses of Funds</b>				
900 Other Uses of Funds				2,953.80
<b>Total Other Uses of Funds</b>				<b>\$2,953.80</b>
<b>Total 3100 Food Services</b>				<b>\$1,223,467.65</b>

	<u>Food Service(51)</u>	<u>Child Care Operations(52)</u>	<u>Other Enterprise(58)</u>	<u>Internal Service(60)</u>	<u>Total</u>
<b>3000 <u>Operation of Non-Instructional Services</u></b>					
3100 Food Services	1,223,467.65				1,223,467.65
<b>Total Operation of Non-Instructional Services</b>	<b>\$1,223,467.65</b>				<b>\$1,223,467.65</b>
<b>TOTAL ACTUAL EXPENDITURES &amp; OTHER FINANCING USES</b>	<b>\$1,223,467.65</b>				<b>\$1,223,467.65</b>

LEA : 103023153 Elizabeth Forward SD

Printed 11/21/2024 2:48:46 PM

Fund	School	School Number	Local Personnel	Local Nonpersonnel	State Personnel	State Nonpersonnel	Federal Personnel	Federal Nonpersonnel	Total	Explanation
10	Central El Sch	136	2,092,160.00	609,090.00	1,980,644.00	576,624.00	223,566.00	33,434.00	5,515,518.00	
	Elizabeth Forward MS	4804	4,024,874.00	1,105,515.00	3,810,340.00	1,046,588.00	236,284.00	166,419.00	10,390,020.00	
	Elizabeth Forward SHS	144	5,532,665.00	2,263,053.00	5,237,763.00	2,142,428.00	9,812.00	114,620.00	15,300,341.00	
	Greenock El Sch	8115	1,402,647.00	378,040.00	1,327,884.00	357,890.00	188,507.00	21,317.00	3,676,285.00	
	Mt Vernon El Sch	142	1,455,496.00	411,777.00	1,377,916.00	389,828.00	31,240.00	22,102.00	3,688,359.00	
	William Penn El Sch	139	2,286,854.00	654,466.00	2,164,961.00	619,582.00	468,950.00	36,576.00	6,231,389.00	
<b>Total</b>			<b>16,794,696.00</b>	<b>5,421,941.00</b>	<b>15,899,508.00</b>	<b>5,132,940.00</b>	<b>1,158,359.00</b>	<b>394,468.00</b>	<b>44,801,912.00</b>	