

Weymouth Families,

We hope to see everyone come out to our drama club's school play next Wednesday, March 26th at 6pm.

Please note that the yearbook order form is included again. The deadline to order a yearbook is Friday, April 11th.

Please see the attached for this week's Friday folder. It includes:

- Revised school calendar
- School play flyer
- Career day flyer
- Yearbook order form (Deadline April 11th)
- Summer reading program flyer
- PreK registration flyer
- Estell Manor HSA Easter flyer
- Dorothy Fire Company Easter flyer
- March Meal menus
- Women's health fair flyer
- Memos from Nurse Hooven
- March meal menus

Have a wonderful weekend!



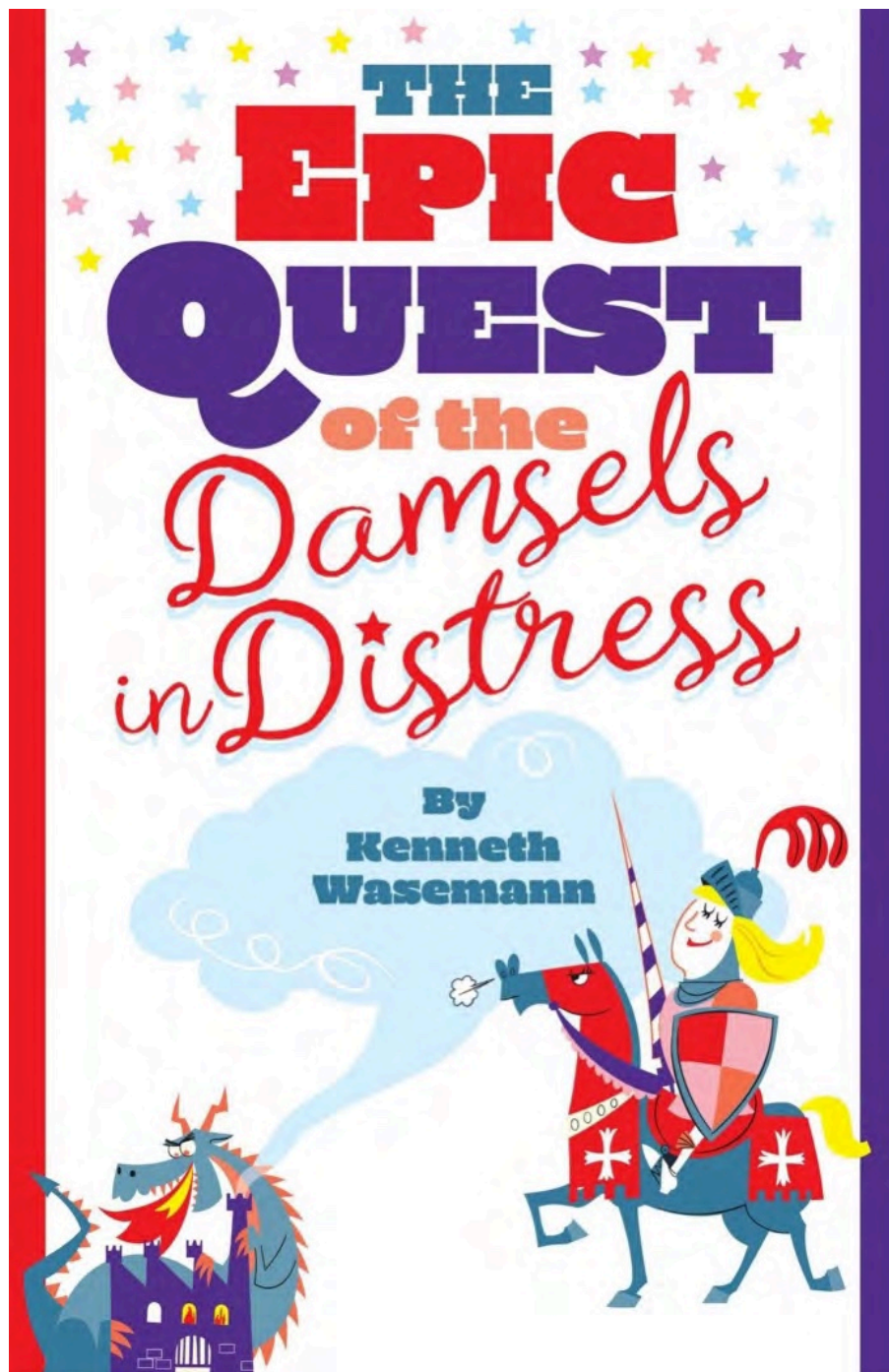
Weymouth Township School 2024-2025 SCHOOL CALENDAR



2 - Labor Day 3, 4 - Teacher In-Service - NO SCHOOL 5 - FIRST DAY FOR STUDENTS 26 - Back to School Night - SINGLE SESSION	<table><tr><th colspan="7">SEPTEMBER 2024</th></tr><tr><td>S</td><td>M</td><td>T</td><td>W</td><td>Th</td><td>F</td><td>S</td></tr><tr><td>1</td><td>2</td><td>3</td><td>4</td><td>5</td><td>6</td><td>7</td></tr><tr><td>8</td><td>9</td><td>10</td><td>11</td><td>12</td><td>13</td><td>14</td></tr><tr><td>15</td><td>16</td><td>17</td><td>18</td><td>19</td><td>20</td><td>21</td></tr><tr><td>22</td><td>23</td><td>24</td><td>25</td><td>26</td><td>27</td><td>28</td></tr><tr><td>29</td><td>30</td><td></td><td></td><td></td><td></td><td></td></tr></table>	SEPTEMBER 2024							S	M	T	W	Th	F	S	1	2	3	4	5	6	7	8	9	10	11	12	13	14	15	16	17	18	19	20	21	22	23	24	25	26	27	28	29	30						<table><tr><th colspan="7">FEBRUARY 2025</th></tr><tr><td>S</td><td>M</td><td>T</td><td>W</td><td>Th</td><td>F</td><td>S</td></tr><tr><td></td><td></td><td></td><td></td><td></td><td></td><td>1</td></tr><tr><td>2</td><td>3</td><td>4</td><td>5</td><td>6</td><td>7</td><td>8</td></tr><tr><td>9</td><td>10</td><td>11</td><td>12</td><td>13</td><td>14</td><td>15</td></tr><tr><td>16</td><td>17</td><td>18</td><td>19</td><td>20</td><td>21</td><td>22</td></tr><tr><td>23</td><td>24</td><td>25</td><td>26</td><td>27</td><td>28</td><td></td></tr></table>	FEBRUARY 2025							S	M	T	W	Th	F	S							1	2	3	4	5	6	7	8	9	10	11	12	13	14	15	16	17	18	19	20	21	22	23	24	25	26	27	28		17 - Presidents' Day - SCHOOL CLOSED							
	SEPTEMBER 2024																																																																																																											
S	M	T	W	Th	F	S																																																																																																						
1	2	3	4	5	6	7																																																																																																						
8	9	10	11	12	13	14																																																																																																						
15	16	17	18	19	20	21																																																																																																						
22	23	24	25	26	27	28																																																																																																						
29	30																																																																																																											
FEBRUARY 2025																																																																																																												
S	M	T	W	Th	F	S																																																																																																						
						1																																																																																																						
2	3	4	5	6	7	8																																																																																																						
9	10	11	12	13	14	15																																																																																																						
16	17	18	19	20	21	22																																																																																																						
23	24	25	26	27	28																																																																																																							
18/20		19/19																																																																																																										
11 - Teacher In-Service - NO SCHOOL 14 - Columbus Day - SCHOOL CLOSED	<table><tr><th colspan="7">OCTOBER 2024</th></tr><tr><td>S</td><td>M</td><td>T</td><td>W</td><td>Th</td><td>F</td><td>S</td></tr><tr><td></td><td></td><td>1</td><td>2</td><td>3</td><td>4</td><td>5</td></tr><tr><td>6</td><td>7</td><td>8</td><td>9</td><td>10</td><td>11</td><td>12</td></tr><tr><td>13</td><td>14</td><td>15</td><td>16</td><td>17</td><td>18</td><td>19</td></tr><tr><td>20</td><td>21</td><td>22</td><td>23</td><td>24</td><td>25</td><td>26</td></tr><tr><td>27</td><td>28</td><td>29</td><td>30</td><td>31</td><td></td><td></td></tr></table>	OCTOBER 2024							S	M	T	W	Th	F	S			1	2	3	4	5	6	7	8	9	10	11	12	13	14	15	16	17	18	19	20	21	22	23	24	25	26	27	28	29	30	31			<table><tr><th colspan="7">MARCH 2025</th></tr><tr><td>S</td><td>M</td><td>T</td><td>W</td><td>Th</td><td>F</td><td>S</td></tr><tr><td></td><td></td><td></td><td></td><td></td><td></td><td>1</td></tr><tr><td>2</td><td>3</td><td>4</td><td>5</td><td>6</td><td>7</td><td>8</td></tr><tr><td>9</td><td>10</td><td>11</td><td>12</td><td>13</td><td>14</td><td>15</td></tr><tr><td>16</td><td>17</td><td>18</td><td>19</td><td>20</td><td>21</td><td>22</td></tr><tr><td>23</td><td>24</td><td>25</td><td>26</td><td>27</td><td>28</td><td>29</td></tr><tr><td>30</td><td>31</td><td></td><td></td><td></td><td></td><td></td></tr></table>	MARCH 2025							S	M	T	W	Th	F	S							1	2	3	4	5	6	7	8	9	10	11	12	13	14	15	16	17	18	19	20	21	22	23	24	25	26	27	28	29	30	31						13 - Conferences - SINGLE SESSION 13 - Conferences - afternoon & evening 14 - Teacher In-Service - NO SCHOOL
	OCTOBER 2024																																																																																																											
S	M	T	W	Th	F	S																																																																																																						
		1	2	3	4	5																																																																																																						
6	7	8	9	10	11	12																																																																																																						
13	14	15	16	17	18	19																																																																																																						
20	21	22	23	24	25	26																																																																																																						
27	28	29	30	31																																																																																																								
MARCH 2025																																																																																																												
S	M	T	W	Th	F	S																																																																																																						
						1																																																																																																						
2	3	4	5	6	7	8																																																																																																						
9	10	11	12	13	14	15																																																																																																						
16	17	18	19	20	21	22																																																																																																						
23	24	25	26	27	28	29																																																																																																						
30	31																																																																																																											
21/22		20/21																																																																																																										
7, 8 - NJEA Convention - SCHOOL CLOSED 22 - SINGLE SESSION 25, 26 - Conferences SINGLE SESSION 27 - SINGLE SESSION 28, 29 - Thanksgiving Break - SCHOOL CLOSED	<table><tr><th colspan="7">NOVEMBER 2024</th></tr><tr><td>S</td><td>M</td><td>T</td><td>W</td><td>Th</td><td>F</td><td>S</td></tr><tr><td></td><td></td><td></td><td></td><td></td><td>1</td><td>2</td></tr><tr><td>3</td><td>4</td><td>5</td><td>6</td><td>7</td><td>8</td><td>9</td></tr><tr><td>10</td><td>11</td><td>12</td><td>13</td><td>14</td><td>15</td><td>16</td></tr><tr><td>17</td><td>18</td><td>19</td><td>20</td><td>21</td><td>22</td><td>23</td></tr><tr><td>24</td><td>25</td><td>26</td><td>27</td><td>28</td><td>29</td><td>30</td></tr></table>	NOVEMBER 2024							S	M	T	W	Th	F	S						1	2	3	4	5	6	7	8	9	10	11	12	13	14	15	16	17	18	19	20	21	22	23	24	25	26	27	28	29	30	<table><tr><th colspan="7">APRIL 2025</th></tr><tr><td>S</td><td>M</td><td>T</td><td>W</td><td>Th</td><td>F</td><td>S</td></tr><tr><td></td><td></td><td>1</td><td>2</td><td>3</td><td>4</td><td>5</td></tr><tr><td>6</td><td>7</td><td>8</td><td>9</td><td>10</td><td>11</td><td>12</td></tr><tr><td>13</td><td>14</td><td>15</td><td>16</td><td>17</td><td>18</td><td>19</td></tr><tr><td>20</td><td>21</td><td>22</td><td>23</td><td>24</td><td>25</td><td>26</td></tr><tr><td>27</td><td>28</td><td>29</td><td>30</td><td></td><td></td><td></td></tr></table>	APRIL 2025							S	M	T	W	Th	F	S			1	2	3	4	5	6	7	8	9	10	11	12	13	14	15	16	17	18	19	20	21	22	23	24	25	26	27	28	29	30				17 - SINGLE SESSION 18-25 - SPRING BREAK - SCHOOL CLOSED							
	NOVEMBER 2024																																																																																																											
S	M	T	W	Th	F	S																																																																																																						
					1	2																																																																																																						
3	4	5	6	7	8	9																																																																																																						
10	11	12	13	14	15	16																																																																																																						
17	18	19	20	21	22	23																																																																																																						
24	25	26	27	28	29	30																																																																																																						
APRIL 2025																																																																																																												
S	M	T	W	Th	F	S																																																																																																						
		1	2	3	4	5																																																																																																						
6	7	8	9	10	11	12																																																																																																						
13	14	15	16	17	18	19																																																																																																						
20	21	22	23	24	25	26																																																																																																						
27	28	29	30																																																																																																									
17/17		16/16																																																																																																										
20 - SINGLE SESSION 23 - 31 Winter Break - SCHOOL CLOSED	<table><tr><th colspan="7">DECEMBER 2024</th></tr><tr><td>S</td><td>M</td><td>T</td><td>W</td><td>Th</td><td>F</td><td>S</td></tr><tr><td>1</td><td>2</td><td>3</td><td>4</td><td>5</td><td>6</td><td>7</td></tr><tr><td>8</td><td>9</td><td>10</td><td>11</td><td>12</td><td>13</td><td>14</td></tr><tr><td>15</td><td>16</td><td>17</td><td>18</td><td>19</td><td>20</td><td>21</td></tr><tr><td>22</td><td>23</td><td>24</td><td>25</td><td>26</td><td>27</td><td>28</td></tr><tr><td>29</td><td>30</td><td>31</td><td></td><td></td><td></td><td></td></tr></table>	DECEMBER 2024							S	M	T	W	Th	F	S	1	2	3	4	5	6	7	8	9	10	11	12	13	14	15	16	17	18	19	20	21	22	23	24	25	26	27	28	29	30	31					<table><tr><th colspan="7">MAY 2025</th></tr><tr><td>S</td><td>M</td><td>T</td><td>W</td><td>Th</td><td>F</td><td>S</td></tr><tr><td></td><td></td><td></td><td></td><td>1</td><td>2</td><td>3</td></tr><tr><td>4</td><td>5</td><td>6</td><td>7</td><td>8</td><td>9</td><td>10</td></tr><tr><td>11</td><td>12</td><td>13</td><td>14</td><td>15</td><td>16</td><td>17</td></tr><tr><td>18</td><td>19</td><td>20</td><td>21</td><td>22</td><td>23</td><td>24</td></tr><tr><td>25</td><td>26</td><td>27</td><td>28</td><td>29</td><td>30</td><td>31</td></tr></table>	MAY 2025							S	M	T	W	Th	F	S					1	2	3	4	5	6	7	8	9	10	11	12	13	14	15	16	17	18	19	20	21	22	23	24	25	26	27	28	29	30	31	26 - Memorial Day - SCHOOL CLOSED							
	DECEMBER 2024																																																																																																											
S	M	T	W	Th	F	S																																																																																																						
1	2	3	4	5	6	7																																																																																																						
8	9	10	11	12	13	14																																																																																																						
15	16	17	18	19	20	21																																																																																																						
22	23	24	25	26	27	28																																																																																																						
29	30	31																																																																																																										
MAY 2025																																																																																																												
S	M	T	W	Th	F	S																																																																																																						
				1	2	3																																																																																																						
4	5	6	7	8	9	10																																																																																																						
11	12	13	14	15	16	17																																																																																																						
18	19	20	21	22	23	24																																																																																																						
25	26	27	28	29	30	31																																																																																																						
15/15		21/21																																																																																																										
1 - New Year's Day - SCHOOL CLOSED 20 - Martin Luther King Day - SCHOOL CLOSED	<table><tr><th colspan="7">JANUARY 2025</th></tr><tr><td>S</td><td>M</td><td>T</td><td>W</td><td>Th</td><td>F</td><td>S</td></tr><tr><td></td><td></td><td></td><td>1</td><td>2</td><td>3</td><td>4</td></tr><tr><td>5</td><td>6</td><td>7</td><td>8</td><td>9</td><td>10</td><td>11</td></tr><tr><td>12</td><td>13</td><td>14</td><td>15</td><td>16</td><td>17</td><td>18</td></tr><tr><td>19</td><td>20</td><td>21</td><td>22</td><td>23</td><td>24</td><td>25</td></tr><tr><td>26</td><td>27</td><td>28</td><td>29</td><td>30</td><td>31</td><td></td></tr></table>	JANUARY 2025							S	M	T	W	Th	F	S				1	2	3	4	5	6	7	8	9	10	11	12	13	14	15	16	17	18	19	20	21	22	23	24	25	26	27	28	29	30	31		<table><tr><th colspan="7">JUNE 2025</th></tr><tr><td>S</td><td>M</td><td>T</td><td>W</td><td>Th</td><td>F</td><td>S</td></tr><tr><td>1</td><td>2</td><td>3</td><td>4</td><td>5</td><td>6</td><td>7</td></tr><tr><td>8</td><td>9</td><td>10</td><td>11</td><td>12</td><td>13</td><td>14</td></tr><tr><td>15</td><td>16</td><td>17</td><td>18</td><td>19</td><td>20</td><td>21</td></tr><tr><td>22</td><td>23</td><td>24</td><td>25</td><td>26</td><td>27</td><td>28</td></tr><tr><td>29</td><td>30</td><td></td><td></td><td></td><td></td><td></td></tr></table>	JUNE 2025							S	M	T	W	Th	F	S	1	2	3	4	5	6	7	8	9	10	11	12	13	14	15	16	17	18	19	20	21	22	23	24	25	26	27	28	29	30						17-19 - SINGLE SESSION 17 - Tentative Graduation 19 - Tentative Last day of School 20 - Observance of Juneteenth							
	JANUARY 2025																																																																																																											
S	M	T	W	Th	F	S																																																																																																						
			1	2	3	4																																																																																																						
5	6	7	8	9	10	11																																																																																																						
12	13	14	15	16	17	18																																																																																																						
19	20	21	22	23	24	25																																																																																																						
26	27	28	29	30	31																																																																																																							
JUNE 2025																																																																																																												
S	M	T	W	Th	F	S																																																																																																						
1	2	3	4	5	6	7																																																																																																						
8	9	10	11	12	13	14																																																																																																						
15	16	17	18	19	20	21																																																																																																						
22	23	24	25	26	27	28																																																																																																						
29	30																																																																																																											
21/21		12/12																																																																																																										
KEY: SCHOOL CLOSED SINGLE SESSION (12:50) TEACHER IN-SERVICE NO SCHOOL TENTATIVE LAST DAY OF SCHOOL	END OF MARKING PERIODS MP1 - 11/12/2024 MP2 - 01/24/2025 MP3 - 03/31/2025 MP4 - 06/11/2025	REPORT CARDS DISTRIBUTED MP1 - 11/19/2024 MP2 - 01/31/2025 MP3 - 04/07/2025 MP4 - 06/17/2025	*Last day of school may be adjusted to reflect 180 student days. Additional days will be added or removed from the calendar in the event of emergency closings. BOE Approved: March 18, 2025																																																																																																									

Updated: 3/21/2025 1:18 PM

Parent/Teacher Conferences:
November 25 & 26, 2024
March 13



Performed by: Weymouth Twp. Drama Club

Wednesday, March 26, 2025

6:00 PM in the APR

Admission is FREE and ALL are welcome!!

Refreshments will be available for purchase.

(Proceeds to benefit future productions.)

CAREER DAY

AN ORGANIZED EVENT WHERE STUDENTS AND PARENTS LEARN ABOUT VARIOUS PROFESSIONS AND CAREER PATHS. OUR PURPOSE IS TO HELP OUR COMMUNITY EXPLORE POTENTIAL CAREER OPTIONS AND GAIN INSIGHT INTO WHAT DIFFERENT JOBS ENTAIL.



Families/Parents planning on attending use QR code to register

WEYMOUTH TOWNSHIP EDUCATION ASSOCIATION

**INVITES YOU TO ATTEND THE
MIDDLE SCHOOL CAREER DAY**

Tuesday

**APRIL 15, 2025
9:30 AM-11:30 AM**

**WEYMOUTH TOWNSHIP SCHOOL
1202 11TH AVENUE
DOROTHY, NJ 08317**

INTENDED FOR STUDENTS AND FAMILIES GRADES 5-8

LIGHT SNACKS WILL BE PROVIDED COURTESY OF THE WTEA



Email for more info: kmerusi@weymouthtsd.org
Lbakker@weymouthtsd.org

« *Order* your **YEARBOOK** *Today!*

Don't Miss Your Chance! »»



Online
Orders
Only



inter-state.com/yearbooks

USE ORDER CODE: 91236F

PRICE: \$25.50 + Optional Custom Name \$1.00

ORDER BY: November 1st 2024 - April 11, 2025



Summer Reading Skills

PROGRAMS



CLASSES OFFERED IN VINELAND and WENONAH

Program for 4-Year-Olds and Entering Kindergartners

Your child will learn to read in this exciting program! Children learn letter recognition, beginning phonics, and easy sight words while developing a real love of books. By the end of the program your child will read simple words and sentences and be confident about reading.

Program for Entering 1st Graders

Your child will learn to read independently in this fun program. Students learn the most important first grade reading skills—phonics, sight words and comprehension—and develop a love of reading. Your child will start the school year confident, enthusiastic, and ready to succeed!

Program for Entering 2nd Graders

In this fun program, your child will become a confident, enthusiastic reader! Children build strong phonics skills and improve reading fluency and comprehension. Your child will develop a love of reading and get off to a great start in second grade.

Program for Entering 3rd Graders

In this fun program, your child will become a strong, enthusiastic reader who loves books. Children improve decoding skills, fluency, comprehension, and vocabulary, so they start third grade confident about reading and excited to learn!

Program for Entering 4th and 5th Graders

In this fun and effective program, your child will become a more skilled, confident reader! Students improve comprehension and fluency in fiction and nonfiction and expand their vocabulary. As a result, your child will complete homework more easily, get better grades, and enjoy reading more.

Program for Entering 6th, 7th, and 8th Graders

In this program, your child will become a stronger reader and a more confident, motivated student. Students double reading speed and improve comprehension and focus in fiction and nonfiction, both in print and online. Your child will expand vocabulary and learn note-taking, test-taking, and study strategies that result in higher grades and test scores.

Program for Entering 9th, 10th, and 11th Graders


This program will set your son or daughter up for academic success in high school. Students learn to read twice as fast and increase comprehension and focus in fiction and nonfiction, both in print and online. They expand vocabulary and develop effective study and test-taking strategies, leading to better exam scores and higher grades.

Program for Entering 12th Graders and College Students

This program prepares students to excel academically in college. In this online program, students double their reading speed, increase focus, and improve comprehension for both print and digital materials. They develop strategies to study efficiently, improve their grades, and score higher on exams.



R | RUTGERS UNIVERSITY
Continuing Studies



**Phonics
Fluency
Comprehension
Love of Reading
Study Skills
Reading Speed**



**FOR MORE INFORMATION OR TO REGISTER
Call 1-800-499-8557**

PLEASE SEE REVERSE SIDE FOR CLASS SCHEDULE



RUTGERS UNIVERSITY
Continuing Studies

"The Rutgers University Division of Continuing Studies is delighted to offer programs that help students become confident and skilled readers. I recommend parents learn more and consider enrolling their children."

Dr. Richard Novak, Vice President
Division of Continuing Studies



Class Schedule

All programs meet once each week. Tuition varies by grade level. Please ask about our family discount.

Programs meet in **Vineland (V)** at Shiloh Baptist Church, 1837 Northeast Boulevard,
and in **Wenonah (W)** at Holy Trinity Episcopal Church, 11 North Monroe Avenue.

Additional programs available at other locations and online.

4-Year-Olds & Entering Kindergartners:

Tue. June 24-July 22, 9:00am-10:15am (W)
Tue. July 29-August 26, 9:00am-10:15am (V)

Entering 4th and 5th Graders:

Thu. June 26-July 24, 9:00am-10:15am (W)
Mon. July 28-August 25, 12:45pm-2:00pm (V)

Entering 1st Graders:

Tue. June 24-July 22, 10:30am-11:45am (W)
Tue. July 29-August 26, 10:30am-11:45am (V)

Entering 6th, 7th, and 8th Graders:

Thu. June 26-July 24, 10:30am-11:45am (W)
Mon. July 28-August 25, 10:30am-11:45am (V)

Entering 2nd Graders:

Tue. June 24-July 22, 12:45pm-2:00pm (W)
Tue. July 29-August 26, 12:45pm-2:00pm (V)

Entering 9th, 10th, and 11th Graders:

Thu. June 26-July 24, 12:45pm-2:00pm (W)
Mon. July 28-August 25, 9:00am-10:15am (V)

Entering 3rd Graders:

Tue. June 24-July 22, 2:15pm-3:30pm (W)
Tue. July 29-August 26, 2:15pm-3:30pm (V)

Entering 12th Graders and College Students:

Sat. June 21-July 26, 12:00pm-1:15pm
Sun. June 22-July 27, 12:00pm-1:15pm

Programs are offered through the **Rutgers University Division of Continuing Studies**.
Programs are taught by instructors from the Institute of Reading Development.



FOR MORE INFORMATION OR TO REGISTER

Call 1-800-499-8557

Mon.-Fri. 8am-10pm, Sat. 8am-7pm, and Sun. 10am-6pm

INQUIRE EARLY! CLASS SIZE IS LIMITED.

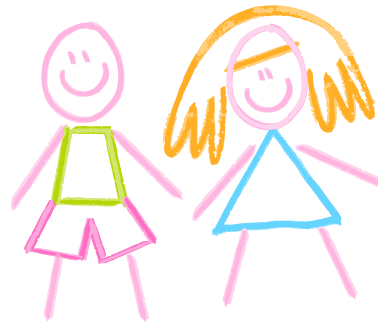
Weymouth Township School District

2025–2026

PRESCHOOL

Registration Now Open

- ✓ 3 & 4 year old Students
- ✓ Full Day Program
- ✓ Must turn 3 by October 1st
- ✓ NJ Approved Curriculum
- ✓ Child-Centered Play



The following documents are required for registration:

- Immunization Records
- Birth Certificate
- Proof of Residency

SCAN ME



For registration paperwork

For more information, call 609–476–2412





ESTELL MANOR HSA PRESENTS

Egg My Yard

Pick a Day

Friday April 11th or Friday April 18th

Current Estell & Weymouth Students

THE ESTELL MANOR HSA WILL HOP ON OVER AND HIDE EGGS WITH INDIVIDUALLY WRAPPED CANDY IN YOUR YARD FOR YOUR CHILDREN TO FIND! GET HOPPING AND DON'T MISS OUT ON THE FUN!

25 EGGS = \$20 DONATION

50 EGGS = \$30 DONATION

75 EGGS = \$40 DONATION

100 EGGS = \$50 DONATION

WE CAN ALSO FILL THE EGGS AND DELIVER FOR YOU TO HIDE WHEN IT IS CONVENIENT FOR YOUR FAMILY.

FIND THE LINK TO SIGN UP IN YOUR EMAIL OR ON OUR FACEBOOK PAGE @ ESTELL MANOR HSA


Request Deadline: April 9, 2025

Payment must be made by April 9

QUESTIONS?

EMAIL US AT HSA@ESTELLMANORSCHOOL.COM





Dorothy Volunteer Fire Company

Easter Egg Hunt

FREE EASTER EGG HUNT
FOR KIDS OF ALL AGES

Month

04

Date

12

Year

25

11AM

1201 Loretta Ave,
Mays Landing, NJ 08330
@ Belcoville Community Center



Phenomenal Woman



HEALTH FAIR

Join us for a **FREE** event where *women* from all walks of life come together.

Discover valuable information about *women's* health, prevention strategies, guest speakers, lunch, health screenings and community resources.

SATURDAY, MAY 3, 2025

Pleasantville Recreation Center
400 Brighton Ave, Pleasantville

11 am - 2 pm

Lunch and Guest Speaker 12pm

Wellness and Self-Care • Cancer Prevention • Resources
Health Screenings • Health Speaker • Demonstrations
Give aways • Lunch

ScreenNJ
CANCER PREVENTION
EDUCATION AND DETECTION



THE LIFESAVER MOBILE HEALTH UNIT WILL OFFER BREAST AND LUNG ASSESSMENTS. USE THE QR CODE TO REGISTER FOR THESE SPECIFIC SCREENINGS.



SHORE
be well CONNECTED



SHORE

PHYSICIANS
GROUPSM

MEDICAL
CENTERSM



QUESTIONS CALL 609-653-3923

NJ Tobacco Quit Options



Enrolled clients of the Quit Center may qualify for **FREE NRT** as part of their treatment plan.



Visit momsquit.com to learn more!



Visit njquitline.org to use the "web to enroll" option



Text **QUITFORKIDS** to **53016**



External Resources on E-Cigarettes



American Lung Association's
Statement on E-cigarettes
Lung.org/ecigs

US Department of Health
and Human Services
[cdc.gov/tobacco/data_statistics/
sgr/e-cigarettes/pdfs/2016_sgr_
entire_report_508.pdf](http://cdc.gov/tobacco/data_statistics/sgr/e-cigarettes/pdfs/2016_sgr_entire_report_508.pdf)

American Lung Association's Truth
About E-Cigarettes Brochure
[kramesstore.com/index.php/the-
truth-about-e-cigarettes.html](http://kramesstore.com/index.php/the-truth-about-e-cigarettes.html)

U.S. Surgeon General's Know the Risks:
E-cigarettes and Young People
e-cigarettes.surgeongeneral.gov

Office on Smoking and Health, National
Center for Chronic Disease Prevention and
Health Promotion's Facts about Electronic
Cigarettes
[cdc.gov/tobacco/basic_information/
e-cigarettes/](http://cdc.gov/tobacco/basic_information/e-cigarettes/)

U.S. Food & Drug Administration's
Vaporizers, E-Cigarettes and Other
Electronic Nicotine Delivery Systems
(ENDS)
[fda.gov/tobacco-products/products-
ingredients-components/vaporizers-
e-cigarettes-and-other-electronic-
nicotine-delivery-systems-ends](http://fda.gov/tobacco-products/products-ingredients-components/vaporizers-e-cigarettes-and-other-electronic-nicotine-delivery-systems-ends)

"The Real Cost" Youth E-Cigarette
Prevention Campaign
[fda.gov/tobacco-products/public-
health-education/real-cost-campaign](http://fda.gov/tobacco-products/public-health-education/real-cost-campaign)

Minnesota's Department of Health
E-Cigarettes and Other Vaping Products
health.state.mn.us/ecigarettes

The National Academies of Sciences Engineering
Medicine Health and Medicine Division's Public
Health Consequences of E-Cigarettes
[nap.edu/catalog/24952/public-health-
consequences-of-e-cigarettes](http://nap.edu/catalog/24952/public-health-consequences-of-e-cigarettes)

American Nonsmokers' Rights Foundation
Electronic Cigarettes
[no-smoke.org/smokefree-threats/
electronic-cigarettes/](http://no-smoke.org/smokefree-threats/electronic-cigarettes/)

Public Health Law Center/Tobacco Control
Legal Consortium E-Cigarettes
[publichealthlawcenter.org/topics/
commercial-tobacco-control/e-cigarettes](http://publichealthlawcenter.org/topics/commercial-tobacco-control/e-cigarettes)

Public Health Law Center's Model for a
Tobaccofree Environment in Minnesota's
K-12 Schools
[publichealthlawcenter.org/sites/default/
files/resources/Addressing-Student-
Commercial-Tobacco-Use-in-Schools-
Alternative-Measures-2019-0.pdf](http://publichealthlawcenter.org/sites/default/files/resources/Addressing-Student-Commercial-Tobacco-Use-in-Schools-Alternative-Measures-2019-0.pdf)

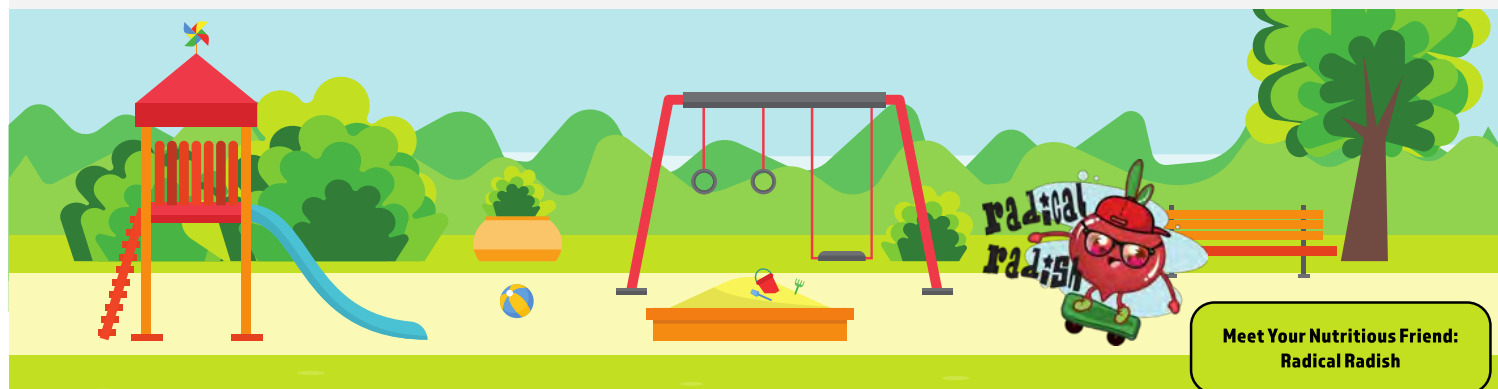
Campaign for Tobacco-Free Kids
Taking Down Tobacco
takingdowntobacco.org

Stanford's Tobacco Prevention Toolkit
med.stanford.edu/tobaccopreventiontoolkit

CATCH My Breath E-Cigarette Prevention
Program for Schools
catchinfo.org/modules/e-cigarettes/

Weymouth Township School
Pre-K Breakfast Menu

March 2025

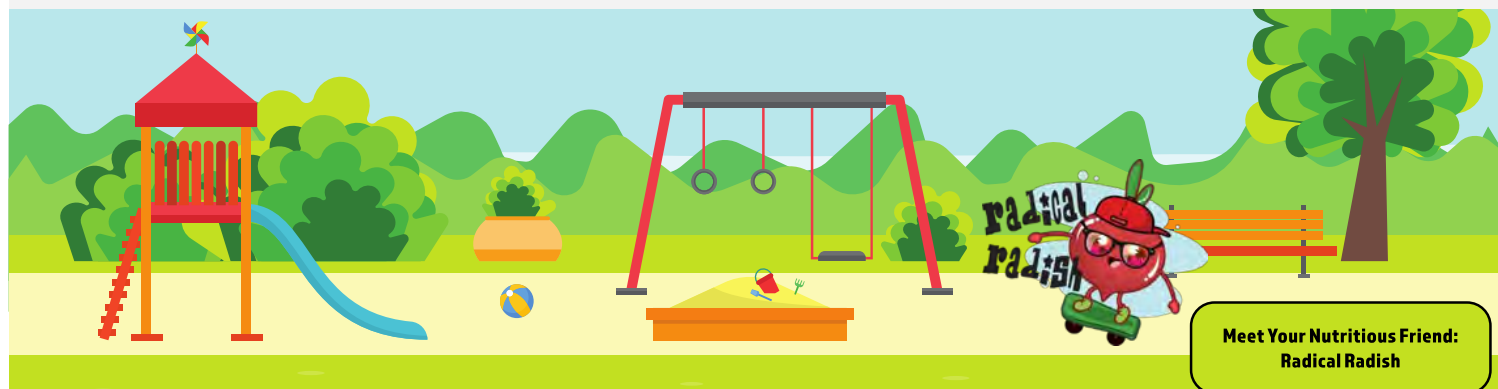


Monday	Tuesday	Wednesday	Thursday	Friday	Offered Daily
3 Cinnamon Toast Crunch Fruit 1% White Milk	4 Maple Waffles Fruit 1% White Milk	5 Cinnamon Chex Fruit 1% White Milk	6 Warm Muffin Fruit 1% White Milk	7 Kix Cereal Fruit 1% White Milk	What is a Meal? Pre-K students are served the three following components for school breakfast. - Whole Grain - Fresh Fruit or Cupped - 1% White Milk Whole Grain Cereals Cinnamon Toast Crunch, Cinnamon Chex, Kix
10 Cinnamon Toast Crunch Fruit 1% White Milk	11 Maple Waffles Fruit 1% White Milk	12 Cinnamon Chex Fruit 1% White Milk	13 Warm Muffin Fruit 1% White Milk	14 Kix Cereal Fruit 1% White Milk	
17 Cinnamon Toast Crunch Fruit 1% White Milk	18 Maple Waffles Fruit 1% White Milk	19 Cinnamon Chex Fruit 1% White Milk	20 Warm Muffin Fruit 1% White Milk	21 Kix Cereal Fruit 1% White Milk	
24 Cinnamon Toast Crunch Fruit 1% White Milk	25 Maple Waffles Fruit 1% White Milk	26 Cinnamon Chex Fruit 1% White Milk	27 Warm Muffin Fruit 1% White Milk	28 Kix Cereal Fruit 1% White Milk	
31 Cinnamon Toast Crunch Fruit 1% White Milk					
Rachel Adams, Food Service Director 609-476-2412 ext. 5 wey@nsfm.com			Meal Prices Student Breakfast \$1.75 Reduced Breakfast \$0.00 Faculty Breakfast \$2.25		

Menu subject to change due to product availability. This institution is an equal opportunity provider and employer.

Weymouth Township School
Pre-K Lunch Menu

March 2025

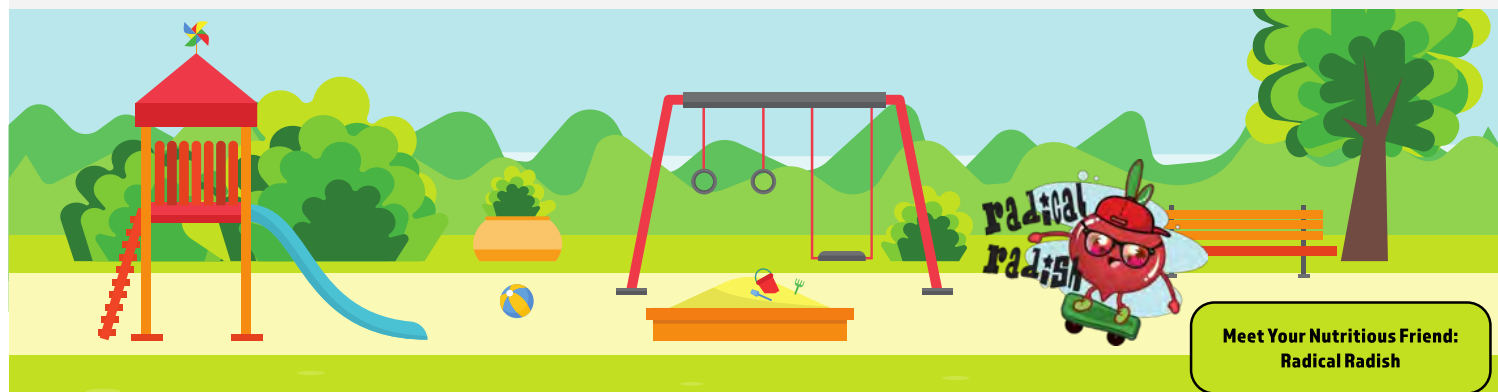


Monday	Tuesday	Wednesday	Thursday	Friday	Offered Daily
3 Chicken Nuggets with Goldfish Corn Cupped or Fresh Fruit 1% White Milk	4 Pancakes & Sausage Baked Beans Cupped or Fresh Fruit 1% White Milk	5 Cheeseburger Celery & Carrots Sticks Cupped or Fresh Fruit 1% White Milk	6 Fish Sticks with Goldfish Sweet Peas Cupped or Fresh Fruit 1% White Milk	7 Pizza Dippers Veggie Patch Cupped or Fresh Fruit 1% White Milk	What is a Meal? Students must choose at least 3 of the 5 components available for the school lunch price . - Choice of Whole Grain - Choice of Protein - Choice of Vegetable - Choice of Fruit - Choice of Milk A minimum ½ cup serving of fruit or vegetable must accompany a reimbursable lunch. Choice of Vegetable Hot vegetable, leafy salad, composed bean salad, seasonal fresh vegetables Choice of Fruit Seasonal fresh fruits, canned fruit in light syrup, 100% fruit juice Choice of Milk 1% white, fat-free white, chocolate, vanilla, and strawberry
10 Chicken Nuggets with Goldfish Fresh Cucumber Slices Cupped or Fresh Fruit 1% White Milk	11 Pancakes & Sausage Grape Tomatoes Cupped or Fresh Fruit 1% White Milk	12 Cheeseburger Tater Tots Cupped or Fresh Fruit 1% White Milk	13 Fish Sticks with Goldfish Corn Cupped or Fresh Fruit 1% White Milk	14 Pizza Dippers Veggie Patch Cupped or Fresh Fruit 1% White Milk	
17 Chicken Nuggets with Goldfish Fresh Cucumber Slices Cupped or Fresh Fruit 1% White Milk	18 Pancakes & Sausage Grape Tomatoes Cupped or Fresh Fruit 1% White Milk	19 Cheeseburger Fries Cupped or Fresh Fruit 1% White Milk	20 Fish Sticks with Goldfish Fresh Broccoli Cupped or Fresh Fruit 1% White Milk	21 Pizza Dippers Veggie Patch Cupped or Fresh Fruit 1% White Milk	
24 Chicken Nuggets with Goldfish Corn Cupped or Fresh Fruit 1% White Milk	25 Pancakes & Sausage Grape Tomatoes Cupped or Fresh Fruit 1% White Milk	26 Cheeseburger Celery & Carrots Sticks Cupped or Fresh Fruit 1% White Milk	27 Fish Sticks with Goldfish Green Beans Cupped or Fresh Fruit 1% White Milk	28 Pizza Dippers Veggie Patch Cupped or Fresh Fruit 1% White Milk	
31 Chicken Nuggets with Goldfish Fresh Cucumber Slices Cupped or Fresh Fruit 1% White Milk					
Rachel Adams, Food Service Director 609-476-2412 ext. 5 wey@nsfm.com			Meal Prices Student Lunch \$3.50 Reduced Lunch \$0.00 Faculty Lunch \$4.50		

Menu subject to change due to product availability. This institution is an equal opportunity provider and employer.

Weymouth Township School
Elementary Breakfast Menu

March 2025



Monday	Tuesday	Wednesday	Thursday	Friday	Offered Daily
3 Cinnamon Toast Crunch Jump Start Fresh or Cupped Fruit Orange Juice	4 Maple Waffles Fresh or Cupped Fruit Orange Juice	5 Apple Donuts Fresh or Cupped Fruit Orange Juice	6 Warm Muffin Fresh or Cupped Fruit Orange Juice	7 Egg & Cheese Bagel Fresh or Cupped Fruit Orange Juice	What is a Meal? Students must have at least 3 of the 4 components for the school breakfast price. - Whole Grain - Protein - Fruit - Milk A minimum ½ cup serving of fruit must accompany a reimbursable breakfast. Daily Alternate -WG Pop-Tart & Cheese Stick -Yogurt & Graham Crackers -Oatmeal Bar & Cheese Stick -Cereal & Graham Crackers Milk 1% white, FF White
10 Cinnamon Toast Crunch Jump Start Fresh or Cupped Fruit Orange Juice	11 Maple Waffles Fresh or Cupped Fruit Orange Juice	12 Apple Donuts Fresh or Cupped Fruit Orange Juice	13 Warm Muffin Fresh or Cupped Fruit Orange Juice	14 Egg & Cheese Bagel Fresh or Cupped Fruit Orange Juice	
17 Cinnamon Toast Crunch Jump Start Fresh or Cupped Fruit Orange Juice	18 Maple Waffles Fresh or Cupped Fruit Orange Juice	19 Apple Donuts Fresh or Cupped Fruit Orange Juice	20 Warm Muffin Fresh or Cupped Fruit Orange Juice	21 Egg & Cheese Bagel Fresh or Cupped Fruit Orange Juice	
24 Cinnamon Toast Crunch Jump Start Fresh or Cupped Fruit Orange Juice	25 Maple Waffles Fresh or Cupped Fruit Orange Juice	26 Apple Donuts Fresh or Cupped Fruit Orange Juice	27 Warm Muffin Fresh or Cupped Fruit Orange Juice	28 Egg & Cheese Bagel Fresh or Cupped Fruit Orange Juice	
31 Cinnamon Toast Crunch Jump Start Fresh or Cupped Fruit Orange Juice					
Rachel Adams, Food Service Director 609-476-2412 ext. 5 wey@nsfm.com			Meal Prices Student Breakfast \$1.75 Reduced Breakfast \$0.00 Faculty Breakfast \$2.25		

Menu subject to change due to product availability. This institution is an equal opportunity provider and employer.



Monday	Tuesday	Wednesday	Thursday	Friday	Offered Daily
3 Chicken & Cheese Quesadilla Ham & Cheese Sandwich FEATURED VEGGIES Corn Fresh Cucumber Slices	4 Double Bacon Cheeseburger Chicken Bacon Ranch Wrap FEATURED VEGGIES Baked Beans Grape Tomatoes	5 Chicken Parm. with Pasta Turkey & Cheese Sandwich FEATURED VEGGIES Green Beans Celery & Carrots Sticks	6 Fish Sticks & Goldfish Chicken Caesar Wrap FEATURED VEGGIES Sweet Peas Fresh Broccoli	7 Pizza Dippers Cheeseburger FEATURED VEGGIES Veggie Patch Side Salad	What is a Meal? Students must choose at least 3 of the 5 components available for the school lunch price. - Choice of Whole Grain - Choice of Protein - Choice of Vegetable - Choice of Fruit - Choice of Milk A minimum ½ cup serving of fruit or vegetable must accompany a reimbursable lunch. Salad of the Week All Salads are served with a Dinner Roll or Tortilla Chips Week-1 (Buffalo Chicken Salad) Week-2 (Taco Salad) Week-3 (Garden Salad with Yogurt) Week-4 (Asian Chicken Salad) Week-5 (Chicken Caesar Salad) Choice of Fruit Seasonal fresh fruits, canned fruit in light syrup, 100% fruit juice Choice of Milk 1% white, chocolate, and strawberry Daily Alternates Uncrustable Meal with Cheese Stick and Goldfish
10 Grilled Cheese Ham & Cheese Sandwich FEATURED VEGGIES Glazed Carrots Fresh Cucumber Slices	11 Buffalo Chicken Dip with Tortilla Chips Chicken Bacon Ranch Wrap FEATURED VEGGIES Roasted Garbanzo Beans Grape Tomatoes	12 Cheesy BBQ Pork Bowl Turkey & Cheese Sandwich FEATURED VEGGIES Tater Tots Celery & Carrots Sticks	13 Taco Soup with Corn Chips Chicken Caesar Wrap FEATURED VEGGIES Corn Fresh Broccoli	14 Stuffed Crust Pizza Cheeseburger FEATURED VEGGIES Veggie Patch Side Salad	
17 Scrambled Eggs & Pancakes Ham & Cheese Sandwich FEATURED VEGGIES Diced Potatoes Fresh Cucumber Slices	18 Chicken Patty on a Bun Chicken Bacon Ranch Wrap FEATURED VEGGIES Baked Beans Grape Tomatoes	19 Chicken Cheesesteak Turkey & Cheese Sandwich FEATURED VEGGIES Fries Celery & Carrots Sticks	20 Asian Sesame Pork over Rice Chicken Caesar Wrap FEATURED VEGGIES Roasted Broccoli Fresh Broccoli	21 Pizza Crunchers Cheeseburger FEATURED VEGGIES Veggie Patch Side Salad	
24 Chicken Fajitas Ham & Cheese Sandwich FEATURED VEGGIES Corn Fresh Cucumber Slices	25 White Chicken Chili with Tortilla Chips Chicken Bacon Ranch Wrap FEATURED VEGGIES Roasted Garbanzo Beans Grape Tomatoes	26 Honey Baked Chicken with Cornbread Turkey & Cheese Sandwich FEATURED VEGGIES Glazed Carrots Celery & Carrots Sticks	27 Pasta Bake Chicken Caesar Wrap FEATURED VEGGIES Green Beans Fresh Broccoli	28 French Bread Pizza Cheeseburger FEATURED VEGGIES Veggie Patch Side Salad	
31 Mac & Cheese Ham & Cheese Sandwich FEATURED VEGGIES Stewed Tomatoes Fresh Cucumber Slices					
Rachel Adams, Food Service Director 609-476-2412 ext. 5 wey@nsfm.com			Meal Prices Student Breakfast \$3.50 Reduced Breakfast \$0.00 Faculty Breakfast \$4.50		

Menu subject to change due to product availability. This institution is an equal opportunity provider and employer.