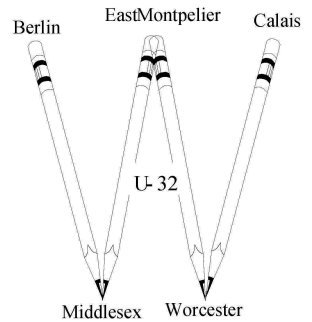


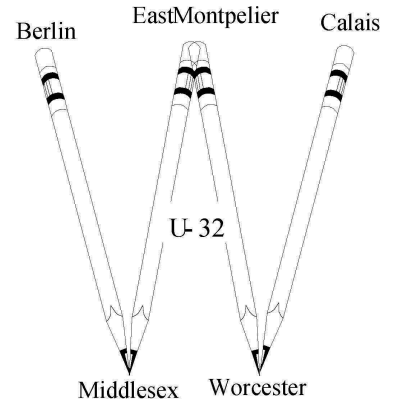
# Strategic Plan Update



WCUUSD Board Meeting 3.19.25

# WCUUSD Strategic Plan

*Progress and Accountability Measures*



# WCUUSD CORE BELIEFS

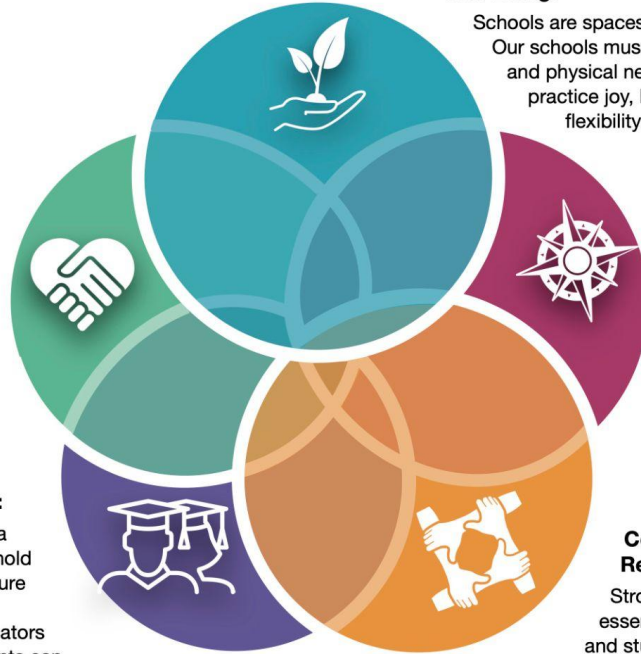
**MISSION:** WCUUSD exists to nurture and inspire in all students the passion, creativity, and power to contribute to their local and global communities.

## **Humanity, Justice, Community and Belonging:**

Schools respect, value, and welcome all people. Our schools build belonging by honoring diversity, centering equity, and celebrating the different experiences we all bring to our community. We will continue to learn and adjust our practices to create a more just and humane world.

## **Rigorous Curriculum and Instruction:**

ALL students can learn, thrive, and make a difference in their communities. Schools hold high expectations for all students and ensure they see their lives and the lives of others reflected in a meaningful curriculum. Educators nurture and inspire students so that students can direct their learning, celebrate their developing identities, pursue interests, and create meaningful pathways to graduation and lifelong learning.



## **Well-Being:**

Schools are spaces where people feel safe and valued. Our schools must meet the academic, social-emotional, and physical needs of all students. We foster and practice joy, kindness, empathy, inclusivity, and flexibility.

## **Transparent and Responsible Leadership:**

All decisions about our schools must be student-centered. We make decisions using data and input from students and the community. Our processes are clear, predictable, inclusive, and transparent.

## **Community Engagement and Relationships:**

Strong, positive relationships are essential to our schools, communities, and students. We nurture connections among people and places. The community is engaged in our schools and our students are engaged in the local and global community.

## Goal #1:

### Build and nurture a culture of well-being and inclusivity.

- Design and implement social-emotional learning standards, instruction, and assessments that foster emotional well-being and mental health.
- Design and implement plans to engage and build community and connectedness, both within and beyond their school buildings.
- Create a professional learning plan to ensure that all staff can create a safe and welcoming learning and working environment that supports equity, diversity, and inclusion in our schools.
- Expand our comprehensive assessment system to include measures of well-being and belonging so that we can celebrate strengths, provide opportunities for reflection, and hold schools accountable to high expectations for all students.

## Goal #1: Progress Measures

Build and nurture a culture of well-being and inclusivity.

- Current progress:
  - Began implementation of DESSA SEL Screener
  - Leadership Team (WCLT) training with Rebecca Haslam - Curriculum Equity Audit
  - U-32 training with Rebecca Haslam for Department Facilitators and Faculty
- Upcoming work:
  - Community School Initiative

## Goal #2:

Challenge, empower, and engage each student through evidence-based instructional strategies and curriculum and varied educational opportunities.

- Leverage our Comprehensive Assessment System to improve our proficiency-based system
- Partner with students to inform curriculum and instruction.
- Audit the opportunities in PreK-12 classrooms that ensure robust engagement in real-world authentic skills
- Leverage professional development systems to support educators in their learning

## Goal #2: Progress Measures

Challenge, empower, and engage each student through evidence-based instructional strategies and curriculum and varied educational opportunities.

- Current Progress:
  - Elementary writing prompts
  - U-32 Student Council and Supervision and Evaluation Team are working on feedback forms for teachers from students
  - Humanity and Justice Committees at each school
  - Curriculum Equity Audits
- Upcoming Work:
  - Community School initiative
  - Curriculum Revision
  - Professional Learning embedded in weekly schedule at Elementary

## Goal #3:

Foster and commit to responsive leadership that engages the community and communicates transparently.

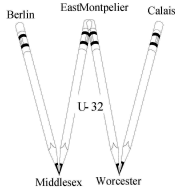
- Propose a financially sustainable configuration plan that supports the curriculum and culture goals.
- Invest in staff and board development to support our three goal areas.
- Create and strengthen existing connections between families, students, and communities.
- Establish structures, policies, procedures, and accountability frameworks that support the implementation of the strategic plan and report on progress.
- Utilize its Education Monitoring Plan to monitor district progress toward the strategic plan

## Goal #3: Progress Measures

Foster and commit to responsive leadership that engages the community and communicates transparently.

- Current Progress:
  - Configuration Study
  - Budget development organized around providing Multi-Layer System of Supports
  - Regular “coffee and conversations” opportunities with Superintendent
  - Procedures Manual in conjunction with Board Policies
  - Education Quality Committee regular reports to Board
- Upcoming Work:
  - Communication planning

# Reflection



- What do you notice?
- What implications does this have for future work?
- What else?