

**ADDENDUM NO. 1**

Date: March 19, 2025

Project: HVAC Replacement Project at Westbrook High School CSP 25.11

Prepared by: Salas O'Brien Engineers  
10930 W. Sam Houston Parkway N., Suite 900  
Houston, Texas 77064

SOBE Project No.: 2450-70835

Prepared For: Prospective Proposers

**PART A: NOTICE TO PROPOSERS**

1. Receipt of this Addendum shall be acknowledged on the Proposal Form. Failure to do so may subject Proposers to disqualification. Each Proposer shall make necessary adjustments and submit his proposal with full knowledge of all modifications, clarifications, and supplemental data included therein.
2. This Addendum forms part of the Contract Documents and shall be incorporated integrally therewith. Where provisions of the following supplemental data differ from those of previously issued documents, this Addendum shall govern.
3. The following Contract Documents have been issued to date delineating the Work (Project). Contract Documents dated: February 13, 2025
4. This Addendum consists of 2 typewritten pages and 2 Drawings Sheets for a total of 4 pages.

**PART B: CHANGES TO PRIOR ADDENDUM***"Any changes to prior issued addendum materials are listed here."*

1. None

**PART C: CHANGES TO THE PROJECT MANUAL**

1. None

**PART D: CHANGES TO THE DRAWINGS**

1. None

**PART E: RE-ISSUED DRAWING SHEET (30" x 42")***"Insert the following sheets and omit the previously issued sheets of the same number."*

1. E1.01 - ELECTRICAL ENLARGED FLOOR PLANS
  - a. Refer to revised Sheet
2. E2.01 - ELECTRICAL DETAILS, LEGENDS, AND SCHEDULES
  - a. Refer to revised Sheet

**PART F: NEW DRAWINGS SHEETS (30" x 42")**

1. None

Sam Houston Pkwy N | Suite 900  
Houston, Texas 77064  
281.664.1900 | [www.salasobrien.com](http://www.salasobrien.com)

**PART G: QUESTIONS/CLARIFICATIONS FROM PRE-PROPOSAL MEETING**

1. None

**PART H: ATTACHMENTS**

1. None

**END OF ADDENDUM 1**

CONFIDENTIAL  
 THE DRAWING AND ASSOCIATED DESIGN ELEMENTS ARE CONFIDENTIAL AND THE PROPERTY OF SALAS OBRIEN. ANY REPRODUCTION, COPIING, OR DISSEMINATION OF THIS DRAWING OR ANY PART THEREOF IS PROHIBITED UNLESS OTHERWISE AGREED TO BY SALAS OBRIEN. THIS DRAWING AS WELL AS ANY CONTENT SHALL BE RETURNED TO SALAS OBRIEN UPON REQUEST.

**PROFESSIONAL SEAL**  
  
 BRADLEY KALMANS  
 STATE OF TEXAS  
 LICENSE NO. 80219  
 EXPIRES 03-19-2025

**ISSUE DATE DESCRIPTION**  
 02/13/2025 ISSUE FOR BID

**Beaumont ISD**  
 Preparing Our Next Generation

2450-70835-00  
 Beaumont Independent School District

**HVAC REPLACEMENT PROJECT AT WESTBROOK HIGH SCHOOL CSP# 25.11**

WESTBROOK HIGH SCHOOL  
 8750 PHELAIN BLVD, BEAUMONT, TX 77706

**NOTES**

- DISCONNECT AND REMOVE ALL ELECTRICAL TO EXISTING MECHANICAL EQUIPMENT AND ASSOCIATED CONDUIT/WIRE BACK TO DISCONNECT SWITCH. LEAVE CIRCUIT INTACT FOR CONNECTION OF REPLACEMENT EQUIPMENT.
- DISCONNECT AND REMOVE ALL EXISTING LIGHTING AND ASSOCIATED CONDUIT/WIRE AND SWITCHES BACK TO NEAREST ACTIVE JUNCTION BOX. LEAVE CIRCUIT INTACT FOR RE-USE.
- DISCONNECT EXISTING FIRE ALARM WIRING FROM EXISTING MOTOR CONTROL CENTER.
- CONNECT TO EXISTING CIRCUIT PRESERVED DURING DEMOLITION, EXTEND CONDUIT/WIRE AND MAKE FINAL CONNECTION.
- REMOTE POWER DISTRIBUTION/CONTROL PANEL PROVIDED BY DIVISION 23, INSTALLED BY DIVISION 28. MAKE ALL FINAL CONNECTIONS TO POWER/CONTROL. NEW EQUIPMENT PER MANUFACTURER RECOMMENDATIONS.
- PROVIDE NEW FIRE ALARM WIRING AT REMOTE POWER DISTRIBUTION/CONTROL PANEL. RECOMMISSION FIRE ALARM SYSTEM TO ENSURE ALL AIR HANDLING UNITS SHUT DOWN WHEN SMOGGED BY THE FIRE ALARM SYSTEM.
- VARIABLE FREQUENCY DRIVE MOTOR CONTROLLER, PROVIDED BY DIVISION 23, INSTALLED BY DIVISION 26.
- ON/OFF SPRING WOUND TIMER SWITCH, 12-HOUR WITH HOLD, PROVIDE INTERMATIC #FD12HM OR APPROVED EQUAL. WHERE MULTIPLE SWITCHES ARE USED, THESE SHALL BE LINKED TOGETHER FOR SIMULTANEOUS OPERATION WITHIN THE SPACE.
- CONNECT TO EXISTING CIRCUIT PRESERVED DURING DEMOLITION, EXTEND CONDUIT/WIRE AND MAKE FINAL CONNECTION; FIELD VERIFY PANEL LOCATION AND REPLACE EXISTING CIRCUIT BREAKER WITH NEW 110A/3P. COORDINATE BREAKER WITH SUBMITTAL SHOP DRAWINGS.
- CONNECT TO NEAREST EXISTING CONVENIENCE RECEPTACLE WITH 2#12, 1#12G, 3/4" C.
- EXISTING PANEL TO BE REMOVED. PANEL FEEDER AND BRANCH CIRCUITS TO BE RE-FED BY NEW PANEL. PRESERVE EXISTING CONDUITS AND CONDUCTORS UNLESS OTHERWISE NOTED.
- NEW PANEL REPLACING EXISTING. INTERCEPT/EXTEND AND THEN RECONNECT EXISTING FEEDER AND BRANCH CIRCUITS PRESERVED DURING DEMOLITION. MATCH EXISTING CONDUIT AND CONDUCTOR SIZING AND QUANTITIES.
- EXISTING MECHANICAL EQUIPMENT TO BE RELOCATED. REMOVE EXISTING WIRES BACK TO SOURCE OR NEAREST DEVICE TO REMAIN. EXISTING CONDUITS TO REMAIN AND TO BE EXTENDED TO NEW EQUIPMENT LOCATION.
- NEW LOCATION OF EXISTING EQUIPMENT. RUN NEW WIRES AND EXTEND EXISTING CONDUITS PRESERVED DURING DEMOLITION. MAKE ALL FINAL CONNECTIONS.
- EXISTING PANEL TO BE REMOVED. BRANCH CIRCUITS TO BE RE-FED BY NEW PANEL. REMOVE EXISTING WIRES AND CONDUITS BACK TO SOURCE OR NEAREST ACTIVE JUNCTION BOX TO REMAIN. DEMOLISH PANEL FEEDER CONDUCTORS AND CONDUIT BACK TO SOURCE. FLIP EXISTING FEEDER BREAKER OFF AND INDICATE AS SPACE.
- NEW PANEL REPLACING EXISTING. RECONNECT EXISTING BRANCH CIRCUITS REMOVED DURING DEMOLITION. USING SAME SIZE OF EXISTING, INSTALL NEW BREAKERS AND RUN NEW WIRES AND CONDUITS. PROVIDE NEW 4#6, 1#10G IN 1" C. FEEDER AND 60A/3P BREAKER FROM PANEL LOCATED IN B-HALL ELECTRICAL ROOM.

**REVISIONS**

NO.	DESCRIPTION	DATE
A	DESCRIPTION	DATE
1	ADDENDUM 01	03/19/2025

**CHECKED BY** PS  
**DRAWN BY** JS

**SHEET NAME**  
 ELECTRICAL ENLARGED FLOOR PLANS

**SHEET NUMBER** E1.01  
**REVISION**

**ELECTRICAL GENERAL NOTES**

- DISCONNECT AND REMOVE ALL ABANDONED WIRING AND CONDUIT.
- DISCONNECT AND REMOVE ALL CONDUIT, WIRE, AND DISCONNECTING MEAN ASSOCIATED WITH HVAC EQUIPMENT BEING REMOVED.
- UNLESS NOTED OTHERWISE, ALL EXISTING ELECTRICAL SWITCHBOARDS, PANELBOARDS, TRANSFORMERS, RELAY PANEL ETC., SHALL REMAIN.
- EXCEPT AS OTHERWISE NOTED, ELECTRICAL WORK OR MATERIAL RENDERED OBSOLETE SHALL BE ABANDONED WHERE CONCEALED AND REMOVED WHERE EXPOSED. OLD UNUSED WIRING AND DEVICES SHALL BE REMOVED FROM THE ABANDONED (CONCEALED) CONDUITS. OUTLETS SHALL BE PROVIDED WITH BLANK COVERS. ANY CONDUITS OUT OF MASONRY SURFACE SHALL BE CUT INTO SURFACE AND PATCHED.
- CONTRACTOR TO FILL IN ALL HOLES LEFT BY THE DEMOLITION OF EXISTING CONDUIT PENETRATIONS.
- DEMOLITION/EXISTING DRAWINGS ARE BASED ON FIELD OBSERVATIONS; CONTRACTOR TO VERIFY EXISTING CONDITIONS IN FIELD PRIOR TO BID AND COMMENCEMENT OF WORK.
- CONTRACTOR SHALL VISIT THE SITE BEFORE SUBMITTING A BID AND VERIFY EXISTING CONDITIONS. ANY MODIFICATIONS REQUIRED CONTRARY TO THE DOCUMENTS FOR A COMPLETE AND OPERATING SYSTEM SHALL BE THE SOLE RESPONSIBILITY OF THE OF THE CONTRACTOR.
- OWNER SHALL HAVE THE SOLE RIGHT OF REFUSAL ON ALL EQUIPMENT BEING REMOVED FROM THE PROJECT. THIS INCLUDES BUT NOT LIMITED TO DISCONNECTING TO VERIFY EXISTING CONDITIONS.
- MAINTAIN CONTINUITY OF CIRCUITS TO ALL EXISTING LOADS TO REMAIN.
- ALL LIGHT FIXTURES IN MECHANICAL AREAS SHALL BE COORDINATED WITH MECHANICAL AND PLUMBING EQUIPMENT TO AVOID CONFLICTS. LOCATE LIGHT FIXTURES ON PERIMETER WALLS OF MECHANICAL AREAS WHERE PRACTICAL.
- ALL LIGHTING, RECEPTACLE, AND EQUIPMENT BRANCH CIRCUITS CONDUITS SHALL CONTAIN A GROUNDING WIRE. USING THE CONDUIT SYSTEM AS THE ONLY GROUNDING PATH IS NOT ACCEPTABLE. CONTRACTOR TO PROVIDE GROUNDING CONDUCTOR WHERE NEEDED PER NEC.
- PROVIDE DUCT MOUNTED SMOKE DETECTORS IN SUPPLY AND RETURN DUCTS OF ALL AIR HANDLERS 2000 CFM OR GREATER. SMOKE DETECTOR SHALL SEND SUPERVISORY SIGNAL TO FIRE ALARM PANEL AND SHUT DOWN UNIT. UPON SMOKE DETECTOR ACTIVATION, DETECTOR SHALL SEND SIGNAL TO REMOTE ALARM/POWER LED INDICATOR WITH TEST LOCATE DEVICE IN READILY VISIBLE AND ACCESSIBLE LOCATION.
- CONTRACTOR SHALL MAINTAIN ALL WORKING SPACE CLEARANCES PER NEC.
- REFER TO MECHANICAL DRAWINGS FOR EXACT LOCATION OF EQUIPMENT AND SCHEDULE CONTRACTOR TO PROVIDE DISCONNECT SWITCHES AND MAKE FINAL CONNECTIONS AS REQUIRED TO POWER AND CONTROL EQUIPMENT.
- CONTRACTOR SHALL MAINTAIN ALL WORKING CLEARANCE PER NEC.

**ELECTRICAL KEYED NOTES**

- DISCONNECT AND REMOVE ALL ELECTRICAL TO EXISTING MECHANICAL EQUIPMENT AND ASSOCIATED CONDUIT/WIRE BACK TO DISCONNECT SWITCH. LEAVE CIRCUIT INTACT FOR CONNECTION OF REPLACEMENT EQUIPMENT.
- DISCONNECT AND REMOVE ALL EXISTING LIGHTING AND ASSOCIATED CONDUIT/WIRE AND SWITCHES BACK TO NEAREST ACTIVE JUNCTION BOX. LEAVE CIRCUIT INTACT FOR RE-USE.
- DISCONNECT EXISTING FIRE ALARM WIRING FROM EXISTING MOTOR CONTROL CENTER.
- CONNECT TO EXISTING CIRCUIT PRESERVED DURING DEMOLITION, EXTEND CONDUIT/WIRE AND MAKE FINAL CONNECTION.
- REMOTE POWER DISTRIBUTION/CONTROL PANEL PROVIDED BY DIVISION 23, INSTALLED BY DIVISION 28. MAKE ALL FINAL CONNECTIONS TO POWER/CONTROL. NEW EQUIPMENT PER MANUFACTURER RECOMMENDATIONS.
- PROVIDE NEW FIRE ALARM WIRING AT REMOTE POWER DISTRIBUTION/CONTROL PANEL. RECOMMISSION FIRE ALARM SYSTEM TO ENSURE ALL AIR HANDLING UNITS SHUT DOWN WHEN SMOGGED BY THE FIRE ALARM SYSTEM.
- VARIABLE FREQUENCY DRIVE MOTOR CONTROLLER, PROVIDED BY DIVISION 23, INSTALLED BY DIVISION 26.
- ON/OFF SPRING WOUND TIMER SWITCH, 12-HOUR WITH HOLD, PROVIDE INTERMATIC #FD12HM OR APPROVED EQUAL. WHERE MULTIPLE SWITCHES ARE USED, THESE SHALL BE LINKED TOGETHER FOR SIMULTANEOUS OPERATION WITHIN THE SPACE.
- CONNECT TO EXISTING CIRCUIT PRESERVED DURING DEMOLITION, EXTEND CONDUIT/WIRE AND MAKE FINAL CONNECTION; FIELD VERIFY PANEL LOCATION AND REPLACE EXISTING CIRCUIT BREAKER WITH NEW 110A/3P. COORDINATE BREAKER WITH SUBMITTAL SHOP DRAWINGS.
- CONNECT TO NEAREST EXISTING CONVENIENCE RECEPTACLE WITH 2#12, 1#12G, 3/4" C.
- EXISTING PANEL TO BE REMOVED. PANEL FEEDER AND BRANCH CIRCUITS TO BE RE-FED BY NEW PANEL. PRESERVE EXISTING CONDUITS AND CONDUCTORS UNLESS OTHERWISE NOTED.
- NEW PANEL REPLACING EXISTING. INTERCEPT/EXTEND AND THEN RECONNECT EXISTING FEEDER AND BRANCH CIRCUITS PRESERVED DURING DEMOLITION. MATCH EXISTING CONDUIT AND CONDUCTOR SIZING AND QUANTITIES.
- EXISTING MECHANICAL EQUIPMENT TO BE RELOCATED. REMOVE EXISTING WIRES BACK TO SOURCE OR NEAREST DEVICE TO REMAIN. EXISTING CONDUITS TO REMAIN AND TO BE EXTENDED TO NEW EQUIPMENT LOCATION.
- NEW LOCATION OF EXISTING EQUIPMENT. RUN NEW WIRES AND EXTEND EXISTING CONDUITS PRESERVED DURING DEMOLITION. MAKE ALL FINAL CONNECTIONS.
- EXISTING PANEL TO BE REMOVED. BRANCH CIRCUITS TO BE RE-FED BY NEW PANEL. REMOVE EXISTING WIRES AND CONDUITS BACK TO SOURCE OR NEAREST ACTIVE JUNCTION BOX TO REMAIN. DEMOLISH PANEL FEEDER CONDUCTORS AND CONDUIT BACK TO SOURCE. FLIP EXISTING FEEDER BREAKER OFF AND INDICATE AS SPACE.
- NEW PANEL REPLACING EXISTING. RECONNECT EXISTING BRANCH CIRCUITS REMOVED DURING DEMOLITION. USING SAME SIZE OF EXISTING, INSTALL NEW BREAKERS AND RUN NEW WIRES AND CONDUITS. PROVIDE NEW 4#6, 1#10G IN 1" C. FEEDER AND 60A/3P BREAKER FROM PANEL LOCATED IN B-HALL ELECTRICAL ROOM.

FIRE ALARM IS PERFORMANCE BASED PER SPECIFICATIONS. CONTRACTOR TO REFERENCE SPECIFICATIONS FOR ADDITIONAL INFORMATION. A LICENSED FIRE ALARM PLANNING SUPERINTENDENT CERTIFIED TO A MINIMUM LEVEL 3, IN THE SUBFIELD OF FIRE ALARM SYSTEMS THROUGH THE NATIONAL INSTITUTE FOR CERTIFICATION IN ENGINEERING TECHNOLOGIES (NICET), SHALL PROVIDE PLANS AND CALCULATIONS FOR A MANUAL AND AUTOMATIC FIRE DETECTION AND ALARM SYSTEM TO COMPLY WITH THE BUILDING SPACE LAYOUT, BUILDING OCCUPANCY, NFPA 72, LOCAL AND STATE CODE REQUIREMENTS, AND THE FIRE ALARM AND DETECTION SYSTEM SPECIFICATIONS.

**LINE TYPE LEGEND**

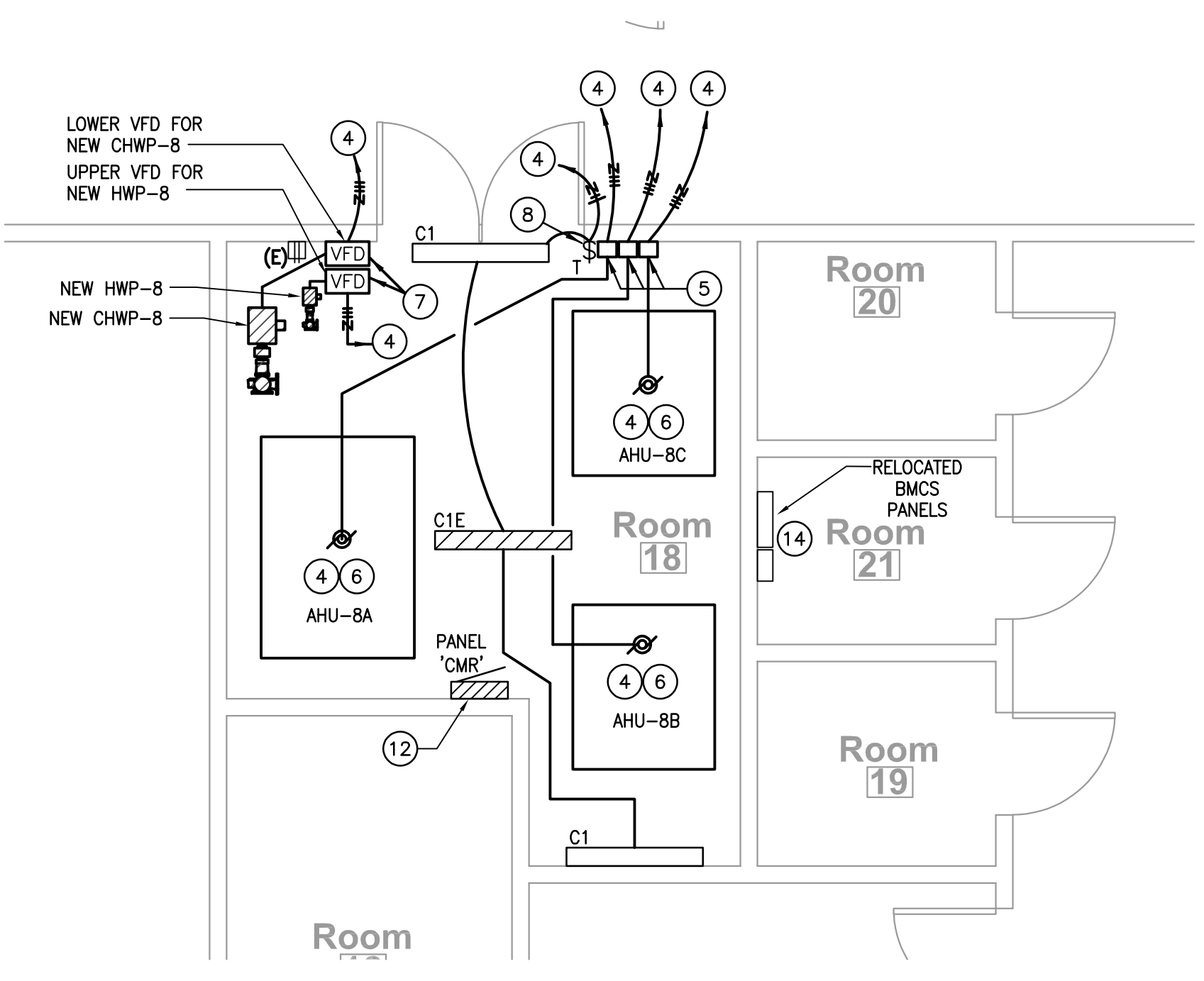
EXISTING TO REMAIN	—————
REMOVE EXISTING	-----
NEW WORK	*****

**PANELBOARD SCHEDULE CMR**

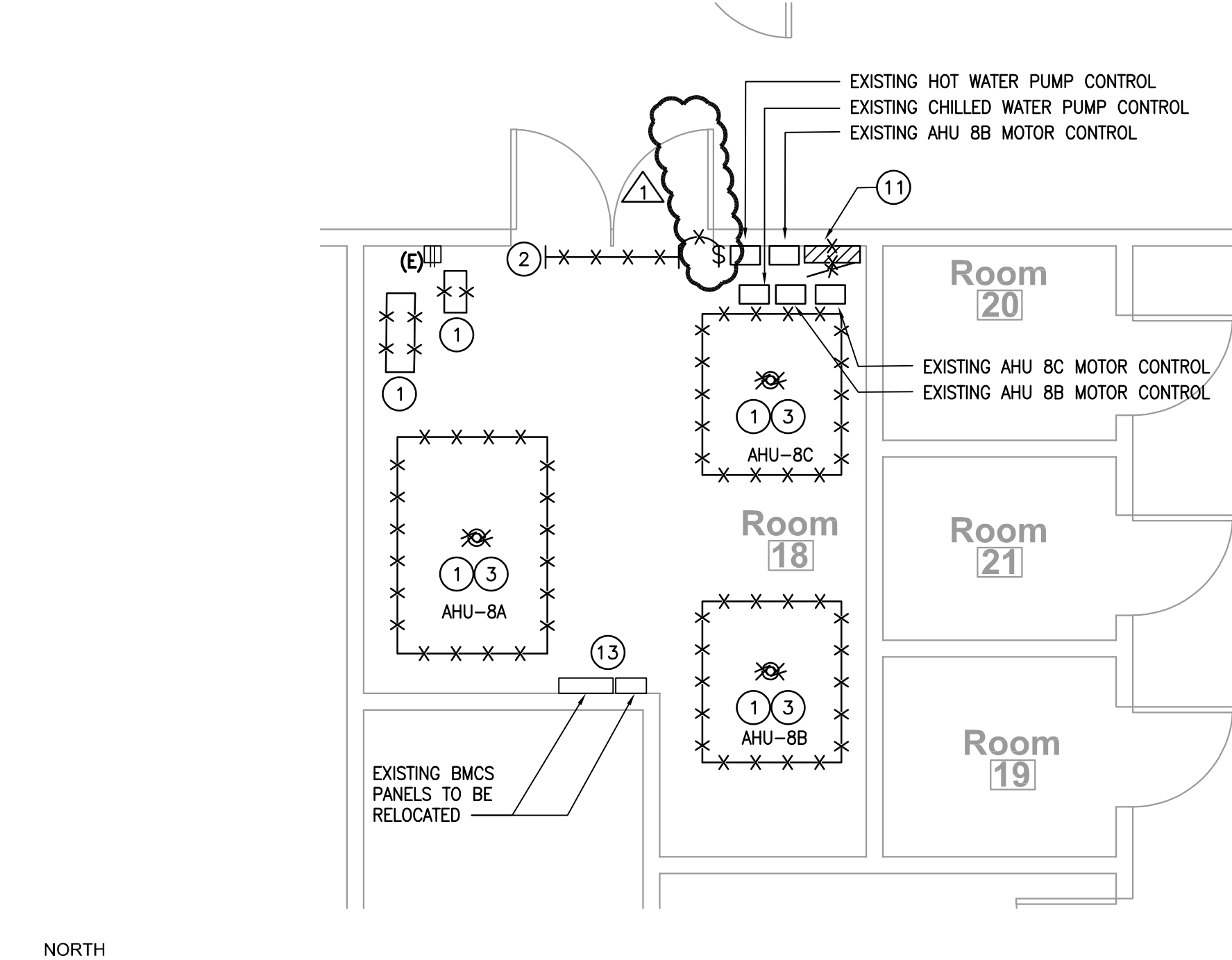
VOLTAGE	PHASE	WIRE	MCB (A)	MLO (A)	AIC RATINGS	MOUNTING SURFACE	LOCATION	NEMA ENCLOSURE
277/480	3	4		100	18,000		MECH ROOM(CR)	NEMA-1

LOAD TYPE	CONN. LD (VA)	SIZING FACTOR	SIZING LOAD (VA)
LIGHTING/CONT-LD	-	-	125%
RECEPTACLES	-	-	100%
MECHANICAL EQ	32580	-	32580
KITCHEN EQUIP	-	-	100%
#OF KITCHEN EQ	-	-	**
EXISTING	-	-	125%
OTHER/MISC	-	-	100%
<b>TOTAL CONNECTED (VA)</b>	<b>32580</b>		<b>32580</b>
<b>CONNECTED AMPACITY (A)</b>	<b>39.2</b>		<b>39.2</b>



**6 ELECTRICAL FLOOR PLAN - CLASSROOM MECHANICAL ROOM**  
 SCALE: 1/4" = 1'-0"



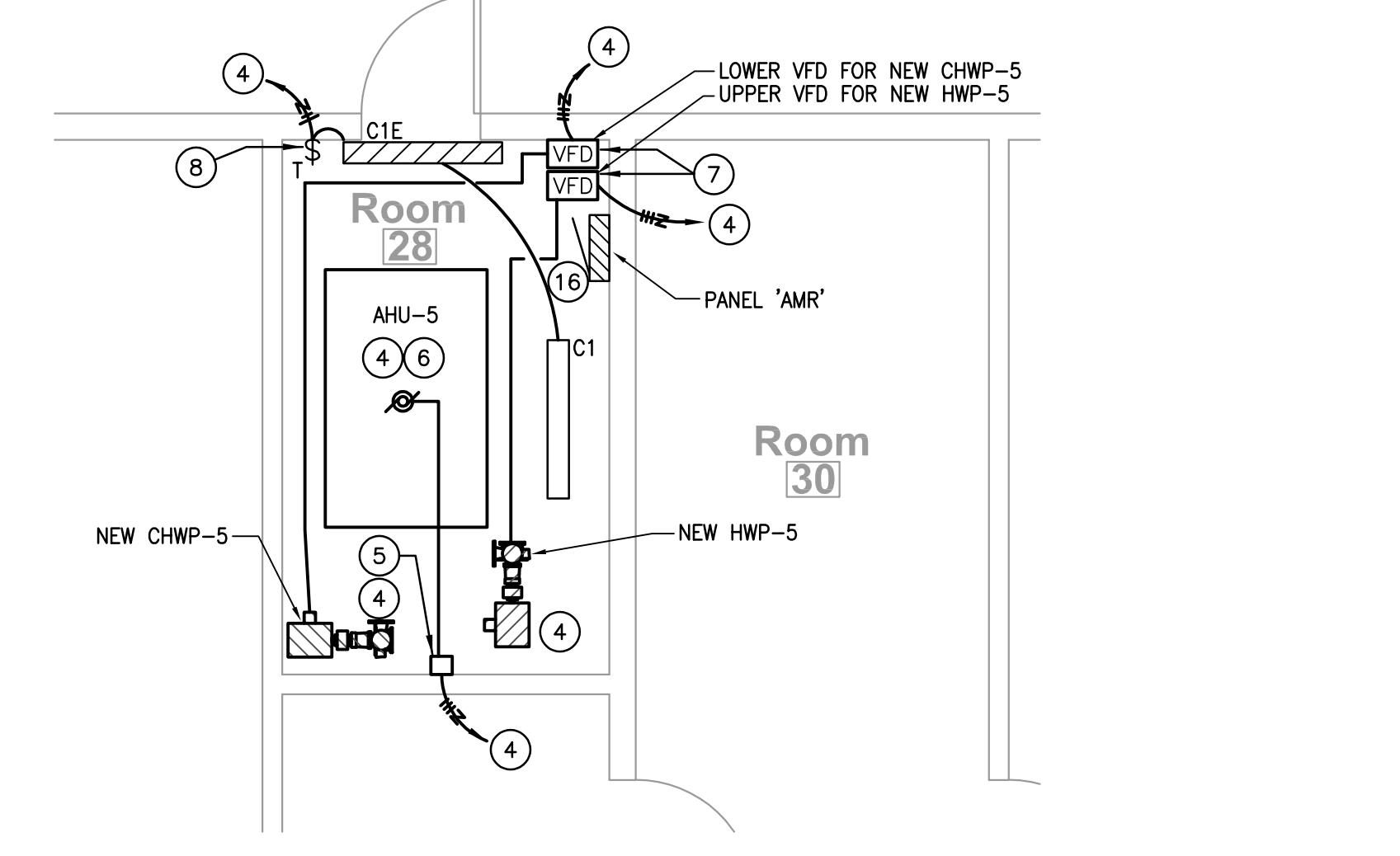
**3 ELECTRICAL DEMOLITION FLOOR PLAN - CLASSROOM MECHANICAL ROOM**  
 SCALE: 1/4" = 1'-0"

**PANELBOARD SCHEDULE AMR**

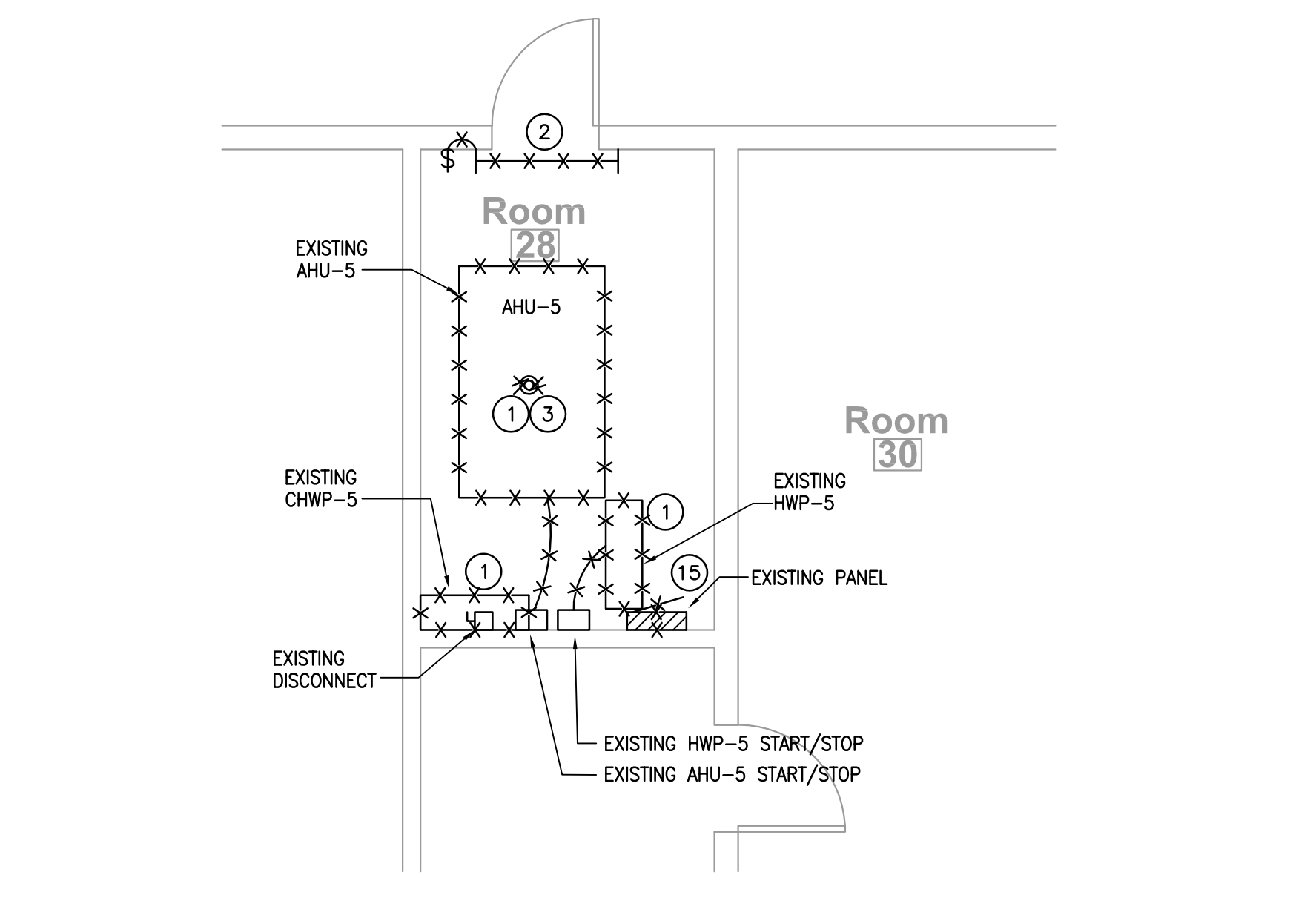
VOLTAGE	PHASE	WIRE	MCB (A)	MLO (A)	AIC RATINGS	MOUNTING SURFACE	LOCATION	NEMA ENCLOSURE
277/480	3	4		100	18,000		MECH ROOM(MD)	NEMA-1

LOAD TYPE	CONN. LD (VA)	SIZING FACTOR	SIZING LOAD (VA)
LIGHTING/CONT-LD	-	-	125%
RECEPTACLES	-	-	100%
MECHANICAL EQ	21782	-	21782
KITCHEN EQUIP	-	-	100%
#OF KITCHEN EQ	-	-	**
EXISTING	-	-	125%
OTHER/MISC	-	-	100%
<b>TOTAL CONNECTED (VA)</b>	<b>21782</b>		<b>21782</b>
<b>CONNECTED AMPACITY (A)</b>	<b>26.2</b>		<b>26.2</b>



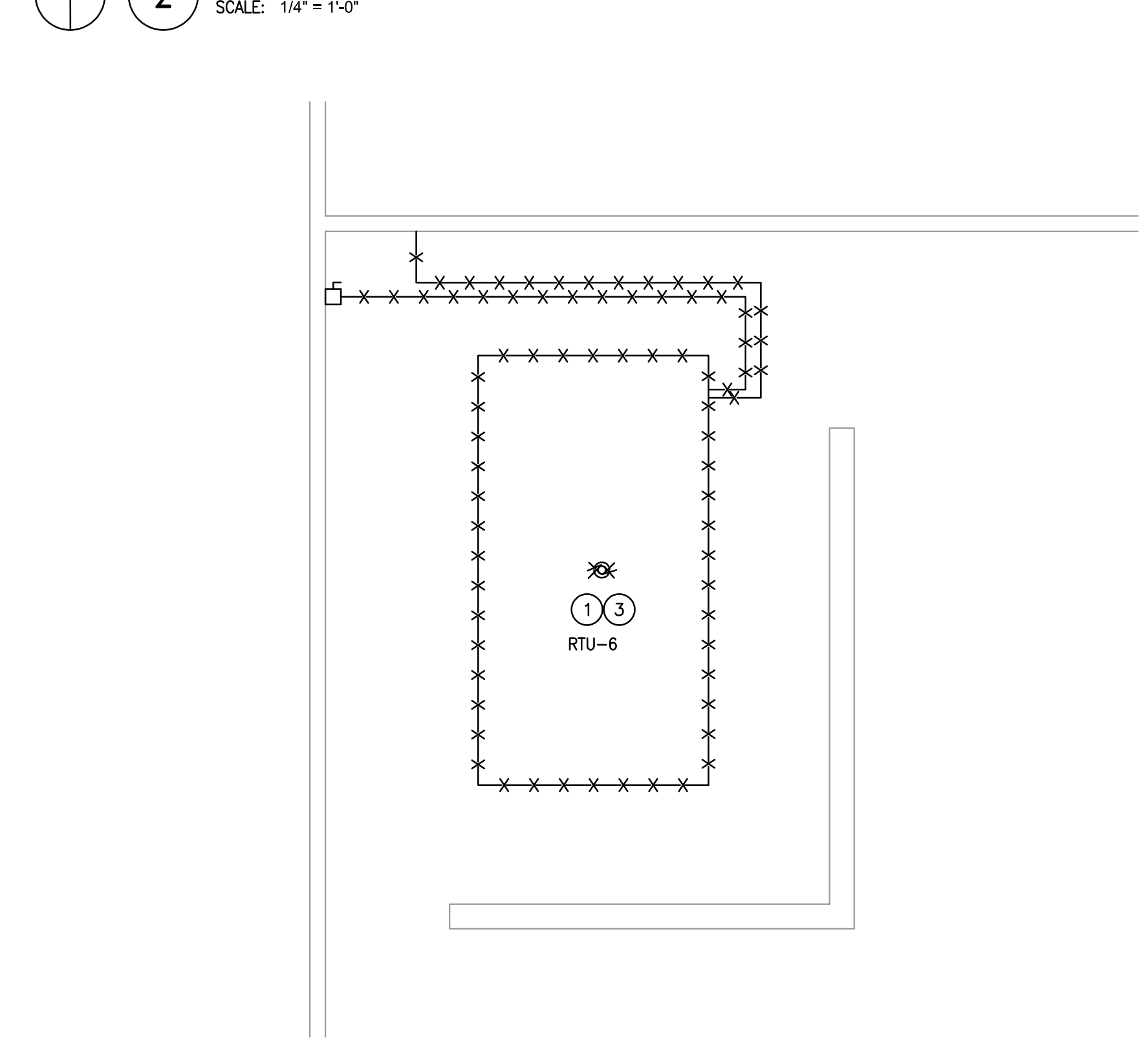
**5 ELECTRICAL FLOOR PLAN - ADMIN MECHANICAL ROOM**  
 SCALE: 1/4" = 1'-0"



**2 ELECTRICAL DEMOLITION FLOOR PLAN - ADMIN MECHANICAL ROOM**  
 SCALE: 1/4" = 1'-0"



**4 ELECTRICAL FLOOR PLAN - BAND HALL OUTDOOR UNIT**  
 SCALE: 1/4" = 1'-0"



**1 ELECTRICAL DEMOLITION FLOOR PLAN - BAND HALL OUTDOOR UNIT**  
 SCALE: 1/4" = 1'-0"

CONFIDENTIAL  
THIS DRAWING AND ASSOCIATED DESIGN ELEMENTS ARE CONFIDENTIAL AND THE PROPERTY OF SALAS OBRIEN. ANY UNAUTHORIZED USE, REUSE OR REPRODUCTION IS PROHIBITED. UNLESS OTHERWISE AGREED TO BY SALAS OBRIEN, THIS DRAWING (AS WELL AS ANY CONTENT) SHALL BE RETURNED TO SALAS OBRIEN UPON REQUEST.



Not for general, utility or other off-site purposes. This document has not been completed or checked out for general information or comment only.

ISSUE DATE	DESCRIPTION
02/13/2025	ISSUE FOR BID



2450-70835-00  
Beaumont Independent School District

HVAC  
REPLACEMENT  
PROJECT AT  
WESTBROOK  
HIGH SCHOOL  
CSP# 25.11

WESTBROOK HIGH SCHOOL  
8750 PHELAN BLVD, BEAUMONT, TX 77706

NOTES

REVISIONS

NO.	DESCRIPTION	DATE
1	ADDENDUM 01	05/19/2025

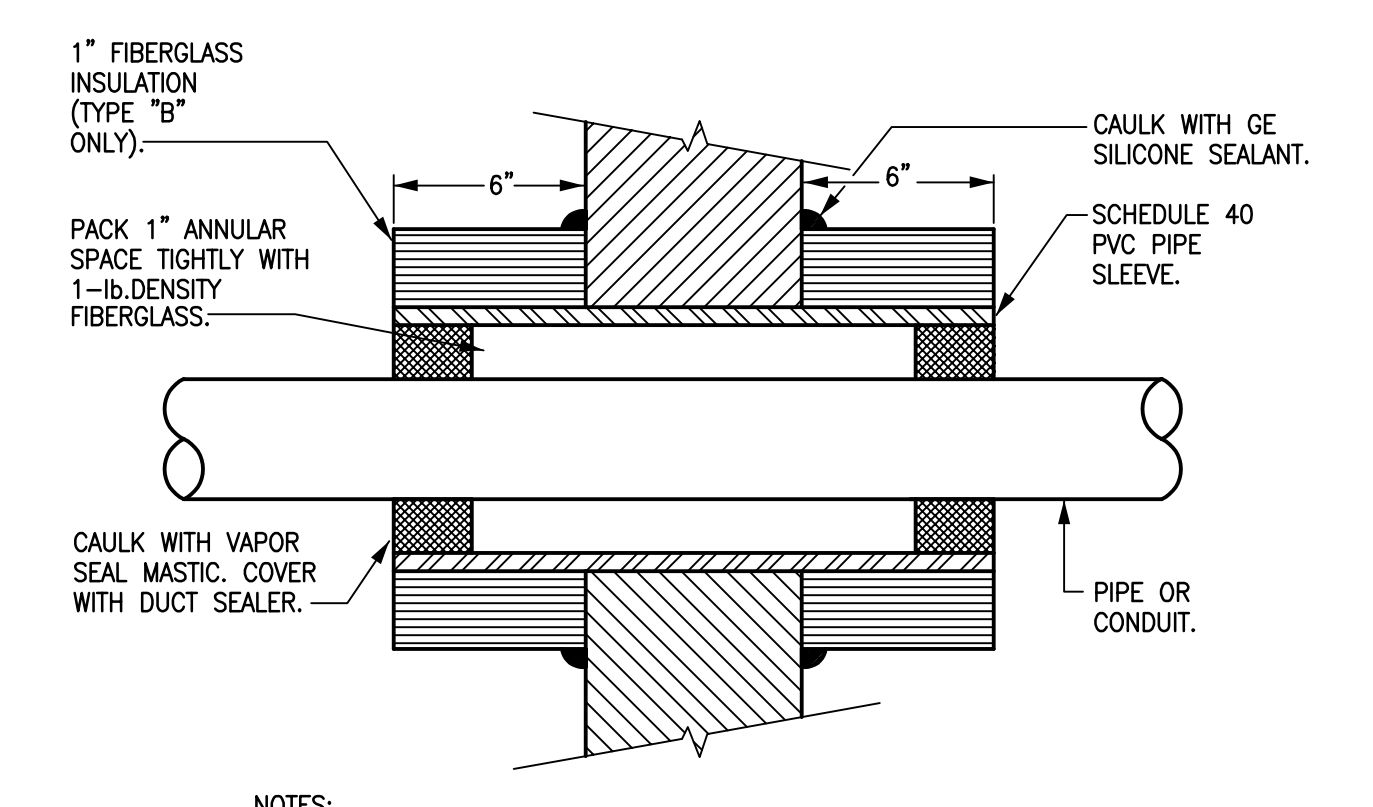
CHECKED BY: JZ  
DRAWN BY: JS

SHEET NAME  
ELECTRICAL DETAILS, LEGENDS, AND SCHEDULES

SHEET NUMBER: E2.01  
REVISION:

SYMBOL SCHEDULE

SYMBOL	DESCRIPTION (DISREGARD ITEMS NOT SHOWN ON PLANS)
<b>LIGHTING (LETTER DENOTES TYPE - SEE LIGHT FIXTURE SCHEDULE)</b>	
☐	LIGHT FIXTURE - RECESSED OR SURFACE MOUNTED
☐	LIGHT FIXTURE - RECESSED OR SURFACE MOUNTED ON EMERGENCY CIRCUIT
○	DOWNLIGHT FIXTURE
⊙	DOWNLIGHT FIXTURE ON EMERGENCY CIRCUIT
⊖	LIGHT FIXTURE - WALL MOUNTED
⊖	LIGHT FIXTURE - WALL MOUNTED ON EMERGENCY CIRCUIT
⊗	EXIT LIGHT - CEILING MOUNTED ON EMERGENCY CIRCUIT
⊗	EXIT LIGHT - WALL MOUNTED ON EMERGENCY CIRCUIT
<b>LIGHTING CONTROLS &amp; DEVICES</b>	
\$	LINE VOLTAGE SINGLE POLE SWITCH
\$3	LINE VOLTAGE 3-WAY SWITCH
\$4	LINE VOLTAGE 4-WAY SWITCH
\$K	LINE VOLTAGE MOMENTARY DPST KEYED SWITCH
\$D	LINE VOLTAGE DIMMER SWITCH, SIZE AND TYPE AS REQUIRED
\$P	LINE VOLTAGE SWITCH WITH PILOT LIGHT
\$T	SPRING WOUND MECHANICAL TIME SWITCH, 20 AMP, 12-HOUR WITH HOLD.
\$C	PUSH BUTTON EPO SWITCH WITH COVER
\$MC	LOW VOLTAGE MOMENTARY CONTACT SWITCH
\$R	LOW VOLTAGE DIGITAL KEYPAD
\$B	LOW VOLTAGE BUILDING MANAGEMENT (BMCS) LOCAL OVERRIDE SWITCH
◇	OCCUPANCY SENSOR (AUTO ON / AUTO OFF WITHIN 20-MINUTES)
◇	VACANCY SENSOR (MANUAL ON / AUTO OFF WITHIN 20-MINUTES)
◇	PHOTOCELL SENSOR
Ⓛ	LIGHTING CONTROL SYSTEM. ( # DENOTES TYPE - SEE LIGHTING CONTROLS DETAILS/SCHEDULE)
Ⓛ	UL924 LOAD CONTROL RELAY, PLENUM RATED, 0-10V COMPATIBLE, 16A MINIMUM.
Ⓛ	UL1008 GENERATOR TRANSFER DEVICE, PLENUM RATED, 0-10V COMPATIBLE, 16A MINIMUM.
<b>RECEPTACLES AND OUTLETS</b>	
⊖	SIMPLEX RECEPTACLE
⊖	DUPLEX RECEPTACLE
⊖U	DUPLEX RECEPTACLE WITH TWO USB CHARGING PORTS.
⊖	125/250 VOLT, 1 PHASE, 3-WIRE, 20 AMPS UNLESS NOTED OTHERWISE
⊖	DOUBLE DUPLEX IN 2-GANG BOX WITH SINGLE COVER PLATE
⊖U	DOUBLE DUPLEX WITH TWO USB CHARGING PORTS IN 2-GANG BOX WITH SINGLE COVER PLATE
⊖	DOUBLE DUPLEX GROUND FAULT CIRCUIT INTERRUPTER RECEPTACLE IN 2-GANG BOX WITH SINGLE COVER PLATE
⊖	DUPLEX GROUND FAULT CIRCUIT INTERRUPTER RECEPTACLE
⊖	CONCEALED SERVICE MULTI-ACCESS FLOOR BOX WITH DUPLEX RECEPTACLE
⊖	CONCEALED SERVICE MULTI-ACCESS FLOOR BOX WITH DOUBLE DUPLEX RECEPTACLE
⊖	JUNCTION BOX
⊖	FLUSH REMOTE GFCI DEVICE (LOCATE IN READILY ACCESSIBLE LOCATION)
<b>MOTOR CONTROLLERS AND EQUIPMENT</b>	
Ⓜ	MOTOR, MAKE FINAL MOTOR CONNECTION
Ⓜ	3PH. MOTOR, MAKE FINAL MOTOR CONNECTION
\$	MOTOR-RATED SWITCH, 20A UNLESS INDICATED OTHERWISE.
Ⓜ	DISCONNECT SWITCH AS REQUIRED
Ⓜ	COMBINATION MOTOR STARTER/DISCONNECT SWITCH AS REQUIRED
Ⓜ	MOTOR STARTER
Ⓜ	PREWIRED DEVICE, MAKE ELECTRICAL FINAL CONNECTIONS
Ⓜ	VARIABLE FREQUENCY DRIVE MOTOR CONTROLLER FURNISHED BY MECHANICAL CONTRACTOR AND INSTALLED BY ELECTRICAL CONTRACTOR.
Ⓜ	LOW VOLTAGE TRANSFORMER, SIZE AND TYPE AS REQUIRED.
Ⓜ	CHIME/BUZZER
<b>ELECTRICAL EQUIPMENT</b>	
Ⓜ	ELECTRICAL PANELBOARD; REFER TO FLOOR PLANS FOR VOLTAGE.
Ⓜ	DRY TYPE TRANSFORMER
Ⓜ	PLYWOOD TELEPHONE BACKBOARD
<b>CIRCUITING</b>	
---	CONDUIT
---	CONDUIT BELOW FLOOR, SLAB, OR GRADE
---	3/4"Ø. UNLESS OTHERWISE NOTED, LONG HATCH, NEUTRAL; SHORT HATCH, PHASE, LONG HATCH & HOOK, INSULATED GROUND. NO HATCHES INDICATES 2 CONDUCTORS. ARROW INDICATES HORIZONTAL.
---	PARTIAL ELECTRICAL HOME RUN
<b>SUBSCRIPTS AND ABBREVIATIONS</b>	
WP	INDICATES "WEATHERPROOF"
H	INDICATES "HORIZONTAL"
NL	INDICATES "NIGHT LIGHT"
1-L	INDICATES "REFER TO ONE-LINE DIAGRAM"
TP	INDICATES "TAMPER PROOF"
(KS)	INDICATES "KNEE SPACE". LOCATE WIRING DEVICE IN KNEESPACE
U.N.O.	INDICATES "UNLESS NOTED OTHERWISE"
(E)	INDICATES EXISTING TO REMAIN
(REP)	INDICATES REPLACE DEVICE AND COVERPLATE.
HB	INDICATES HIGH BAY.
*	NEXT TO ANY SYMBOL INDICATES FINAL ROUGH-IN FIELD COORDINATION BY CONTRACTOR WITH ARCHITECTURAL MILLWORK DRAWINGS AND OTHER TRADES
<b>GENERAL NOTES</b>	
-ALL EXTERIOR BUILDING ELECTRICAL EQUIPMENT TO BE WEATHERPROOF NEMA-4X MINIMUM.	
-ALL EXTERIOR RECEPTACLES SHALL BE WATER RESISTANT TYPE.	



NOTES:  
1. TYPICAL TREATMENT FOR PLUMBING PIPES AND H.V.A.C. PIPING.  
2. SIZE SLEEVE TO ACCEPT CONDUIT.

**2 CONDUIT SEALANT THRU EXTERIOR WALLS**  
SCALE: NONE ECOND-3

ELECTRICAL GENERAL NOTES:

- ALL LIGHT FIXTURES IN MECHANICAL AREAS SHALL BE COORDINATED WITH MECHANICAL AND PLUMBING EQUIPMENT TO AVOID CONFLICTS. LOCATE LIGHT FIXTURES ON PERIMETER WALLS OF MECHANICAL AREAS WHERE PRACTICAL.
- NO MORE THAN THREE SINGLE PHASE CIRCUITS AND NO MORE THAN SIX CURRENT CARRYING CONDUCTORS SHALL BE INSTALLED IN A SINGLE RACEWAY. WHEN FOUR, FIVE, OR SIX CURRENT CARRYING CONDUCTORS ARE INSTALLED IN A SINGLE RACEWAY, THEIR CURRENT CARRYING CAPACITIES SHALL BE DERATED AS REQUIRED BY THE NEC FOR NON-DIVERSIFIED LOADS. THE INSTALLED WIRE SIZE SHALL HAVE A NOMINAL AMPACITY RATING OF 125% OF THAT REQUIRED OR SPECIFIED WHEN FOUR OR MORE CURRENT CARRYING CONDUCTORS ARE INSTALLED IN A SINGLE RACEWAY. NEUTRAL CONDUCTORS SHALL BE CONSIDERED A CURRENT CARRYING CONDUCTOR IN ALL NON-LINEAR LOADED CIRCUITS AS REQUIRED BY THE NEC.
- ALL LIGHTING, RECEPTACLE, AND EQUIPMENT BRANCH CIRCUITS CONDUITS SHALL CONTAIN A GROUND WIRE. USING THE CONDUIT SYSTEM AS THE ONLY GROUND PATH IS NOT ACCEPTABLE.
- PROVIDE DUCT MOUNTED SMOKE DETECTORS IN SUPPLY AND RETURN DUCTS OF ALL AIR HANDLERS 2000 CFM OR GREATER. SMOKE DETECTOR SHALL SEND SUPERVISORY SIGNAL TO FIRE ALARM PANEL AND SHUT DOWN UNIT. UPON SMOKE DETECTOR ACTUATION, DETECTION SHALL SEND SIGNAL TO REMOTE ALARM/POWER LED INDICATOR WITH TEST SWITCH. LOCATE DEVICE IN READILY VISIBLE AND ACCESSIBLE LOCATION OF SMOKE DETECTOR PER IMC. 606.4.1

LIGHTING FIXTURE SCHEDULE

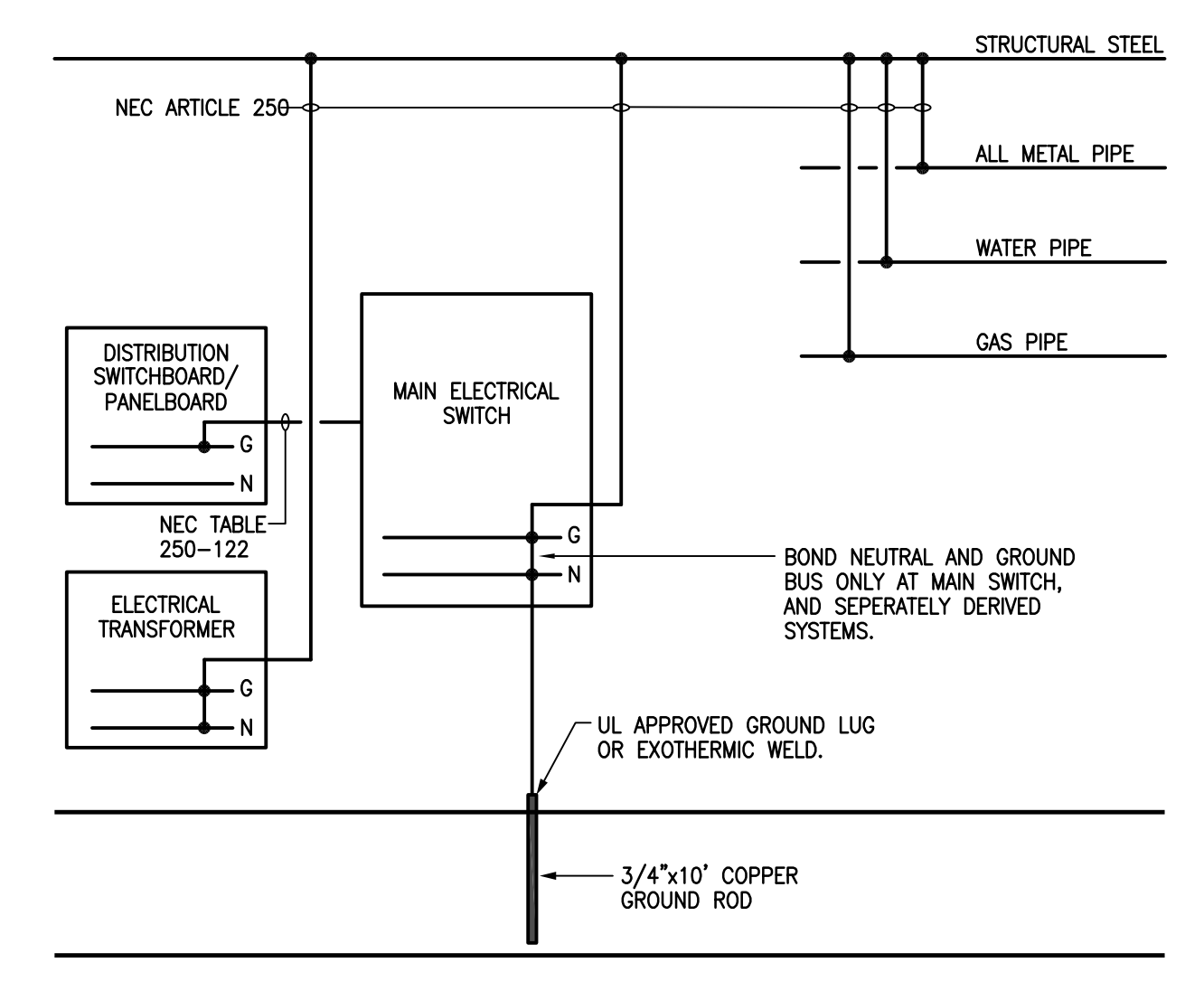
MARK	MANUFACTURER AND CATALOG NUMBER	MOUNTING	TYPE/LUMENS	KELVIN COLOR	CRI	VOLTS	INPUT WATTAGE	REMARKS
C1	4SNLED-LD5-47SL-LW-UNV-L840-CD1-U+AYC/CHAIN-SET+WG/SNF-4FT	SURFACE / CHAIN HANG	LED / 4,000 LU	4000K	80+	UNV	38W	4-FOOT STRIP LIGHT, 0-10V DRIVER, FROSTED LENS, DLC LISTED, CHAIN HANG KIT.
C1E	4SNLED-LD5-47SL-LW-UNV-L840-CD1-U+AYC/CHAIN-SET+WG/SNF-4FT-EL14W	SURFACE / CHAIN HANG	LED / 4,000 LU	4000K	80+	UNV	38W	4-FOOT STRIP LIGHT, 0-10V DRIVER, FROSTED LENS, DLC LISTED, CHAIN HANG KIT. PROVIDE WITH 90-MIN EMERGENCY BATTERY.

APPROVED MANUFACTURERS:  
PRODUCTS BY COOPER, ACUITY, PHILIPS (SIGNIFY), HE WILLIAMS, LSI

NOTES:  
EMERGENCY BATTERY BACK-UP, WHEN SPECIFIED, SHALL ENERGIZE FIXTURE FOR A MINIMUM OF 90-MINUTES, REFER TO SPECIFICATIONS FOR ADDITIONAL REQUIREMENTS NOT INDICATED IN THE LIGHT FIXTURE SCHEDULE. WHERE THERE IS AN INCONSISTENCY BETWEEN THE LIGHT SCHEDULE AND THE SPECIFICATIONS, THE BETTER QUALITY OF WORK SHALL BE INCLUDED IN THE PROPOSAL.

LIGHT FIXTURE APPROVAL WILL BE DETERMINED AFTER REVIEW OF SHOP DRAWING TO DETERMINE IF THE FIXTURE OR POLE SUBMITTED MEETS OR EXCEEDS THE DESIGN STANDARDS AND PERFORMANCE REQUIRED OF THE FIXTURE SPECIFIED IN THE LIGHT FIXTURE SCHEDULE OR SPECIFICATIONS. IT SHALL BE THE RESPONSIBILITY OF THE CONTRACTOR TO PROVIDE THE SPECIFIED LIGHT FIXTURE IF A SUBSTITUTION IS NOT APPROVED WITHOUT ANY ADDITIONAL COST TO THE OWNER. WHERE SPECIFIC OPTIONS/ACCESSORIES ARE SPECIFIED OR REQUIRED, THEY SHALL BE PROVIDED WITHOUT ANY ADDITIONAL COST TO THE OWNER.

DUE TO THE WIDE RANGE OF FIXTURE QUALITIES OFFERED BY EACH MANUFACTURER, THE APPROVED LIGHTING MANUFACTURERS SUBSTITUTION LIST IS NOT INTENDED TO INDICATE THAT ANY OR ALL MANUFACTURERS LISTED WILL HAVE SUITABLE SUBSTITUTIONS FOR THE LIGHT FIXTURES OR POLES SPECIFIED IN THE LIGHT FIXTURE SCHEDULE. SHOP DRAWING AND CONSTRUCTION DELAYS AS A RESULT OF INAPPROPRIATE SUBSTITUTIONS SHALL BE THE RESPONSIBILITY OF THE CONTRACTOR AND SHALL NOT RESULT IN ANY ADDITIONAL COST TO THE OWNER.



**1 GROUNDING DETAIL**  
SCALE: NONE

F  
E  
D  
C  
B  
A