

LCAP Parent Advisory Committee

Connecting with Every Student, Everyday



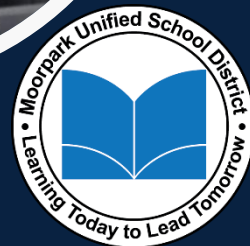
WELCOME

Introductions, Please share:

- Your name
- School(s) you are representing

January 22, 2025

March 18, 2025



Agenda

- Welcome and Introductions
- California Dashboard
- 2024-2025 LCAP Survey Results
- Parent & Family Engagement Policy
- Announcements
- Closing Remarks and Next Steps

Moorpark Unified

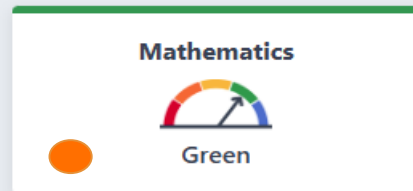
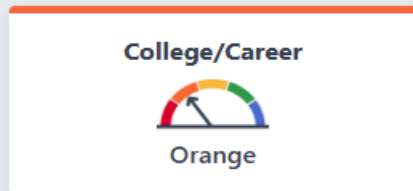
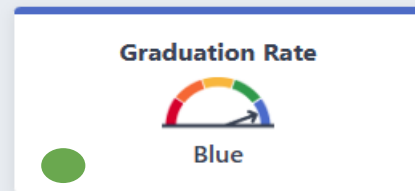
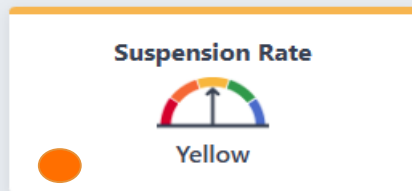
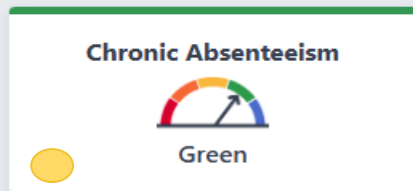


[Generate PDF Report](#)

[View All Schools](#)

[View Additional Reports](#)

2024



Basics: Teachers, Instructional Materials, Facilities

STANDARD MET

Implementation of Academic Standards

STANDARD MET

Parent and Family Engagement

STANDARD MET

Local Climate Survey

STANDARD MET

Access to a Broad Course of Study

STANDARD MET

School Highlights: 7 Measures



Chronic Absenteeism

Campus Canyon, Flory, Mesa Verde, Peach Hill, Walnut Canyon

Suspension Rate

Chaparral, Mesa Verde

English Learner Progress

Arroyo West, Mesa Verde, Mountain Meadows, Walnut Canyon

Graduation Rate

Moorpark High School

ELA and MATH

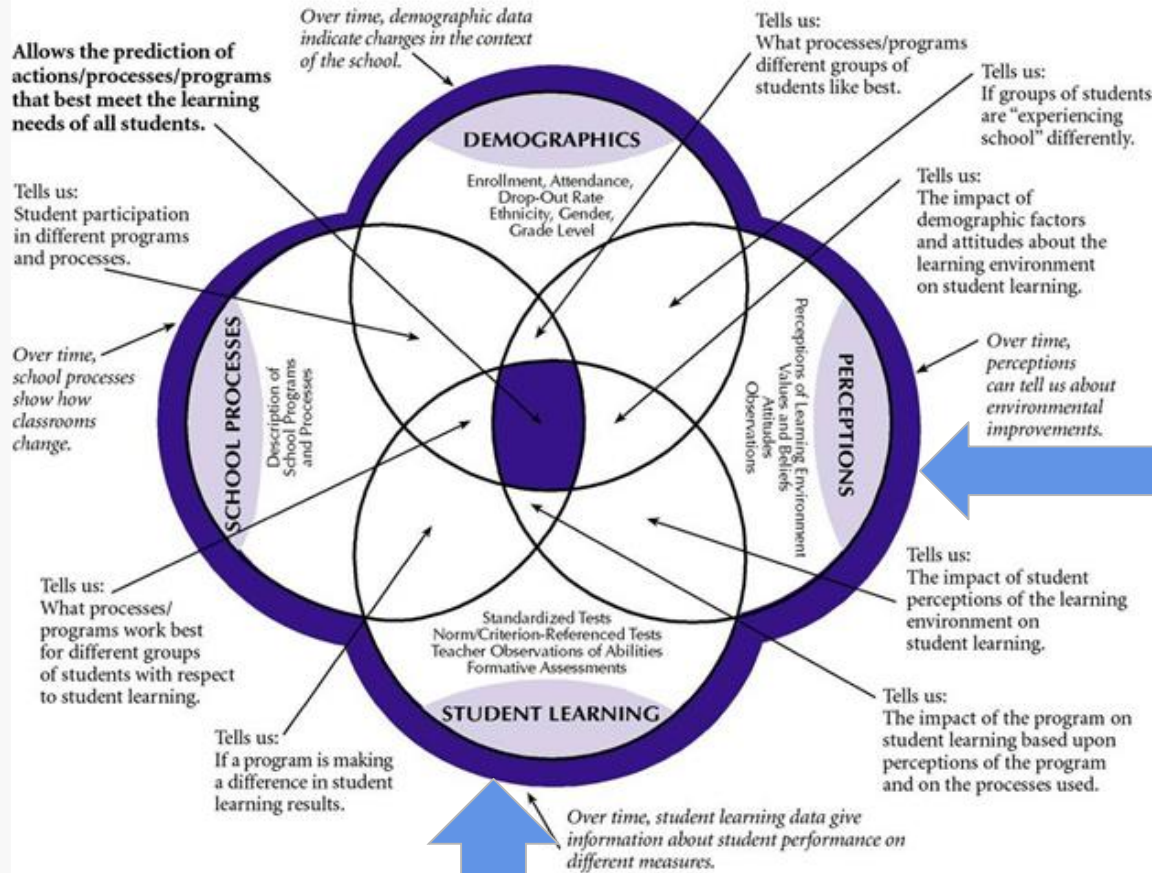
Math:
Arroyo West, Chaparral

College & Career

High School at Moorpark College



Multiple Measures of Data



• • • • •
• • • • •

Test scores are one part of the whole story, here's more

LCAP Survey Participants 2024-25

Students

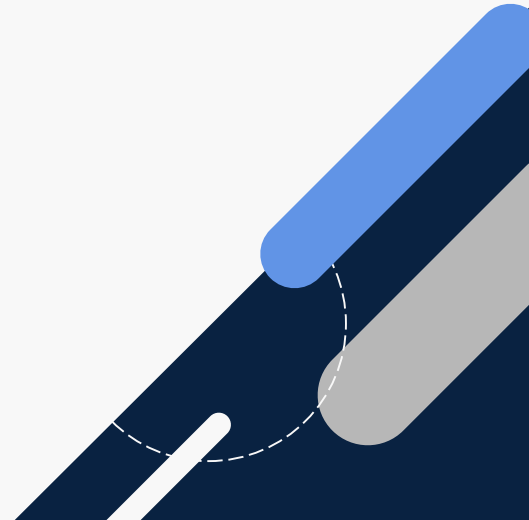
- Grades 4-11
- 2,748 Students

Parents

- 774 surveys submitted in English
- 187 surveys submitted in Spanish

Staff

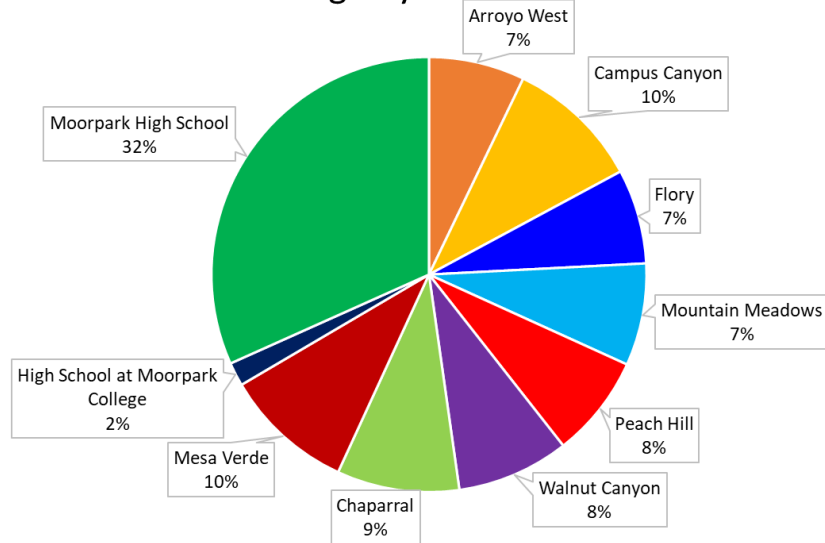
- 265 Certificated Staff
- 154 Classified Staff



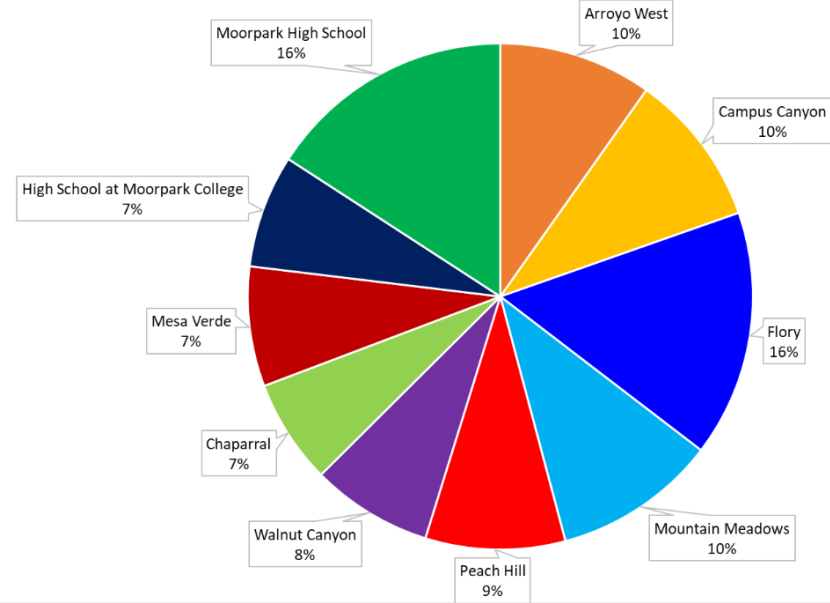


Distribution of Parent Surveys

Enrollment Percentage by School



Percentage of Parent Response by School



LCAP Survey 2024-25

Methodology for Weighted Responses

- Participants asked to rank their top three areas
- Each “1” (area of greatest importance) was multiplied by 5
- Each “2” (second area of greatest importance) was multiplied by 3
- Each “3” (third area of greatest importance) was multiplied by 1
- A formula was used to create a total score based on the weighted rankings



LCAP Survey 2024-25

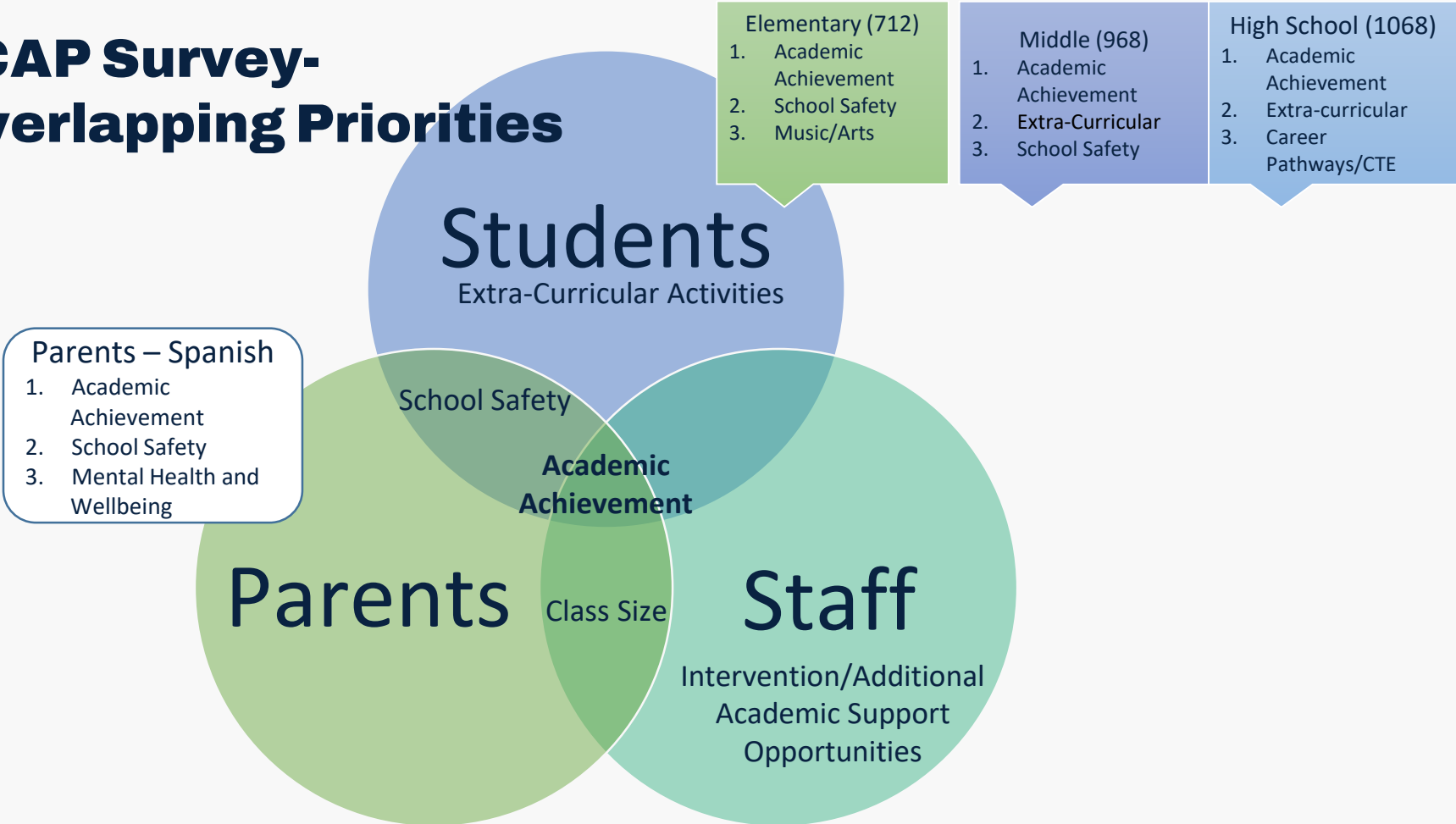
Example

256 parent participants selected “class size”

- 94 participants ranked it as “1”
- 74 participants ranked it as “2”
- 88 participants ranked it as “3”
- $(94 \times 5) + (74 \times 3) + (88 \times 1) = 780$



LCAP Survey- Overlapping Priorities



Survey Results



Thoughts and Reflections to Keep in Mind

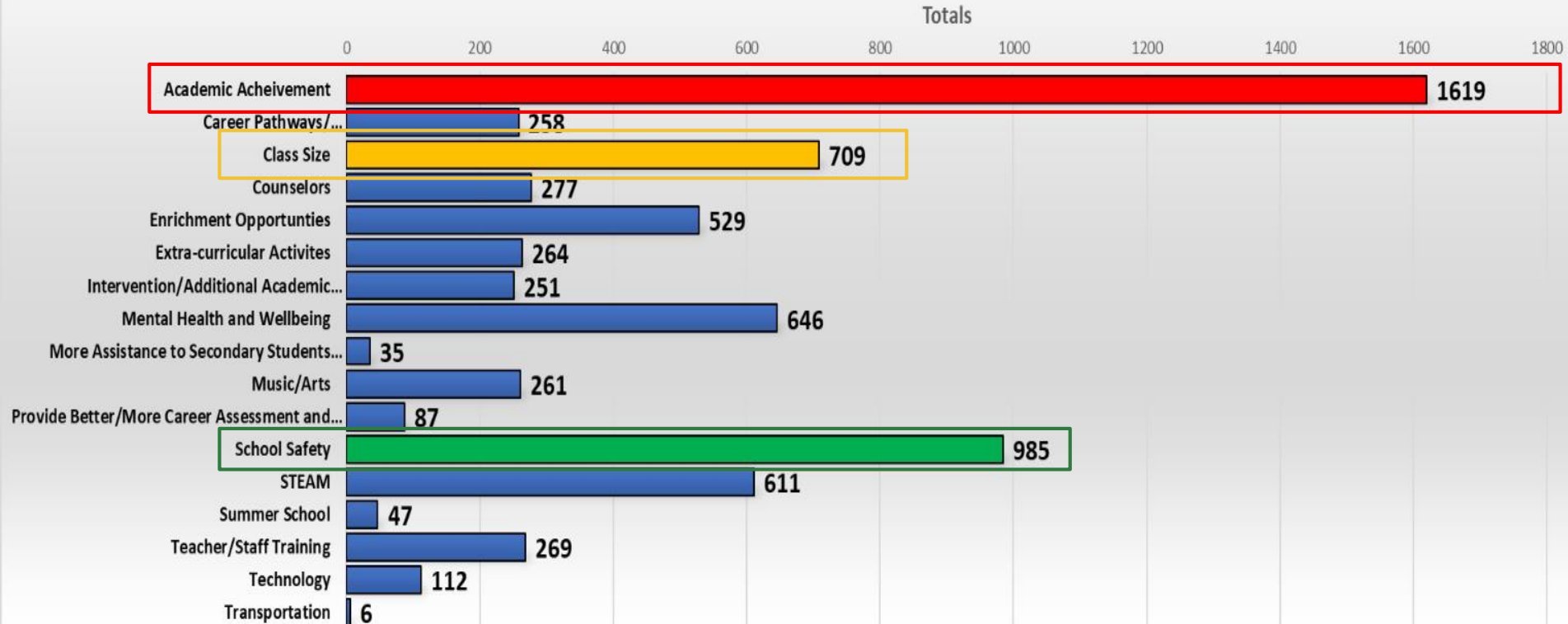
- Were there any surprises?
- What were you pleased to see?
- Any additional Input?

...



Parents- English: The top 3 ranked priorities

LCAP Educational Partners Survey

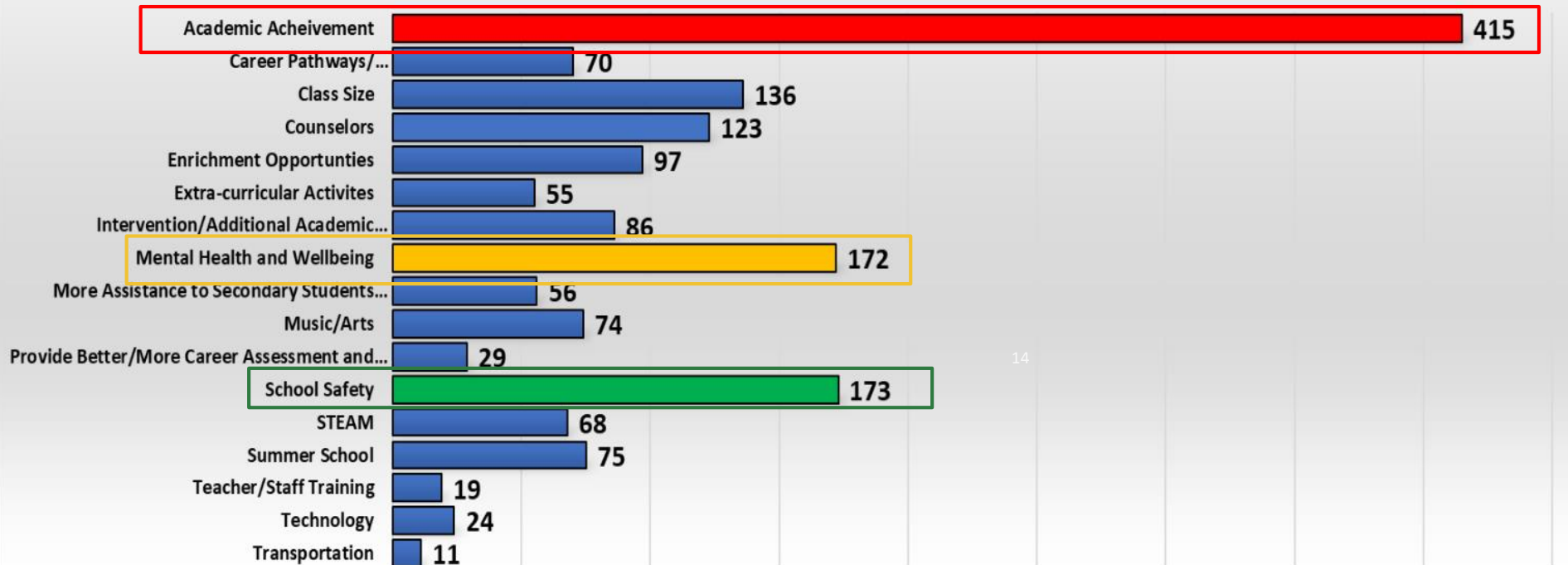


Parents- Spanish: The top 3 ranked priorities

LCAP Educational Partners Survey

Totals

0 50 100 150 200 250 300 350 400 450

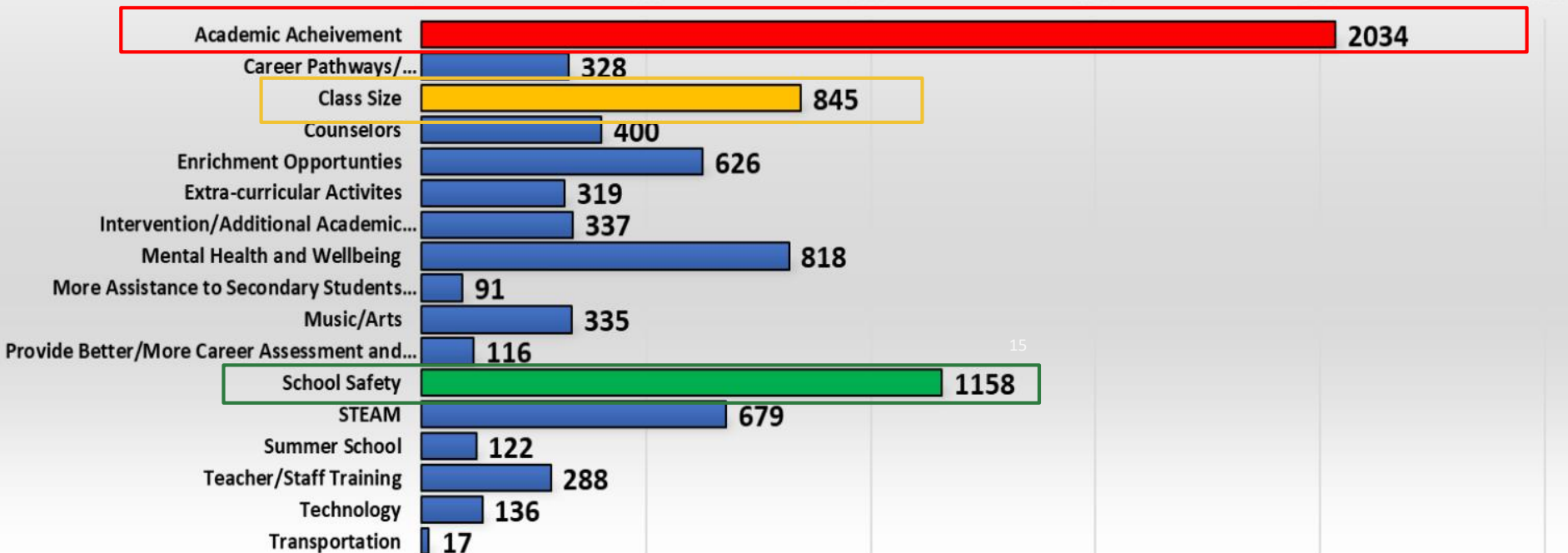


Parents- All: The top 3 ranked priorities

LCAP Educational Partners Survey

Totals

0 500 1000 1500 2000 2500

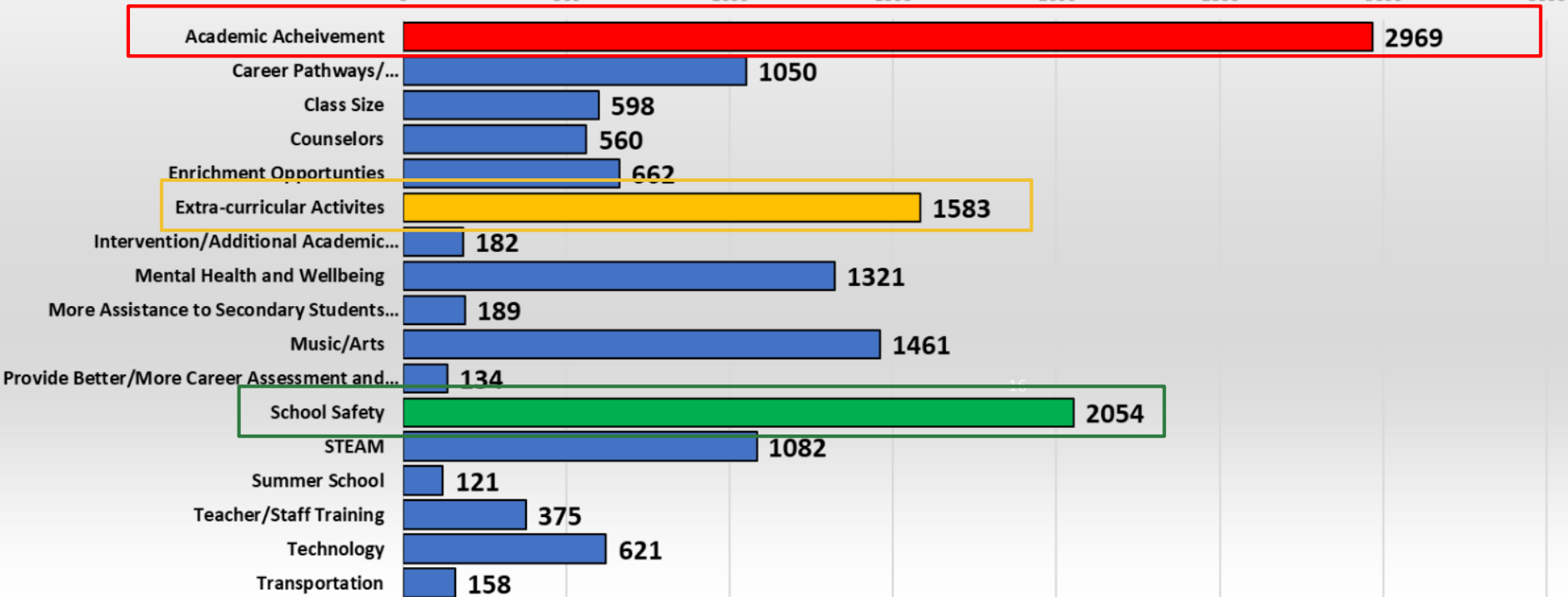


Students- All: The top 3 ranked priorities

LCAP Educational Partners Survey

Totals

0 500 1000 1500 2000 2500 3000 3500



Staff: The top 3 ranked priorities LCAP Educational Partners Survey

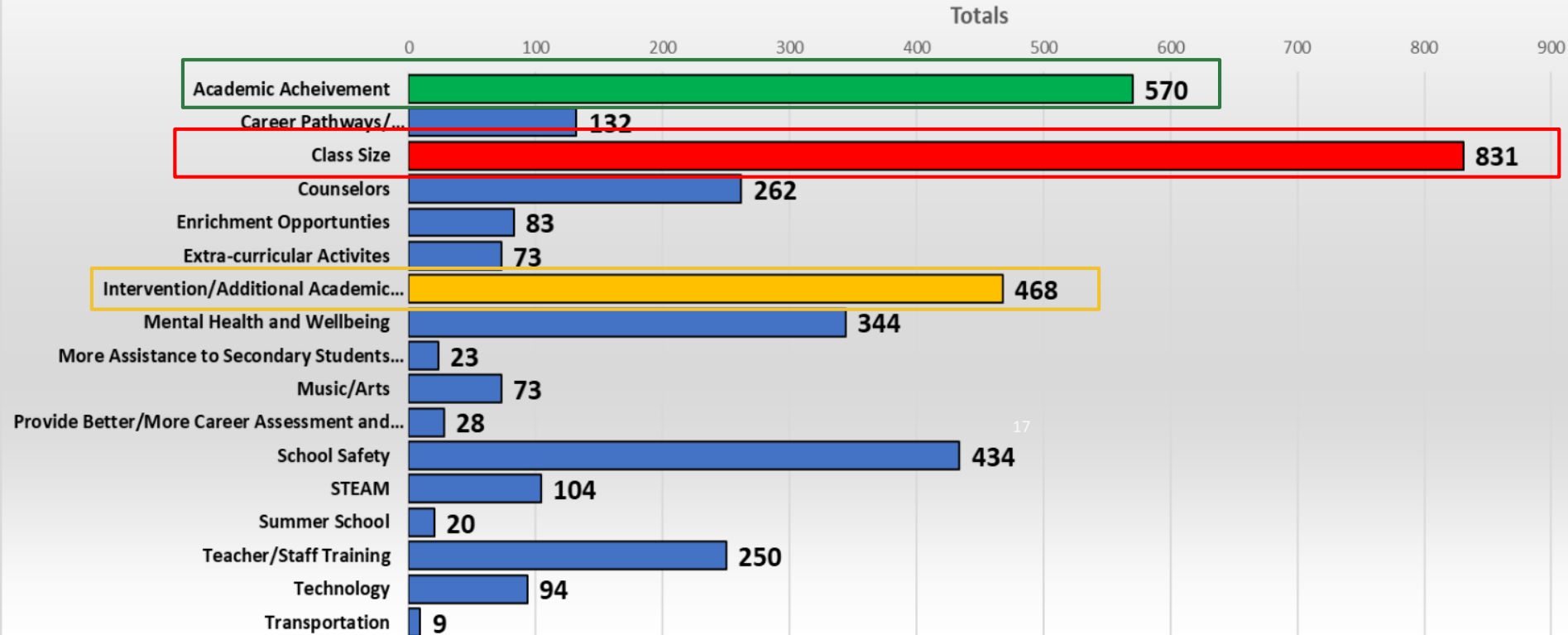
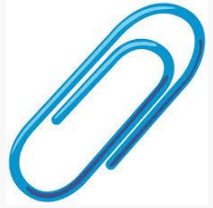
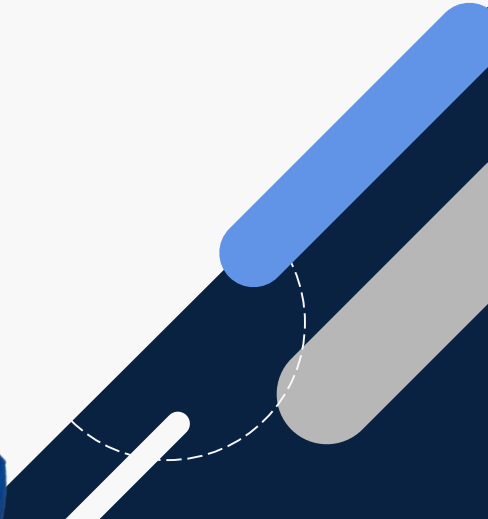


Table Talk & Room Share



- Were there any surprises?
- What were you pleased to see?
- Any additional Input?

...



LCAP Educational Partners Survey Responses



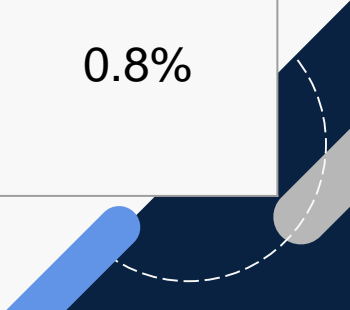
Survey Group	2020-21	2021-22	2022-23	2023-24	2024-25
Parent Spanish Survey	69	41	120	165	187
Parent English Survey	546	1,125	826	666	774
Student Survey	1,416	1,149	2,212	2,219	2,748

Preference for Communication

LCAP Educational Partners Survey 2024-25



Parent Group	Printed Newsletter	Emailed Newsletter	Email	Phone	Text	Face to Face
Spanish Survey-187	45.5%	12.8%	27.8%	8.0%	4.8%	1.1%
English Survey-774	18.1%	32.0%	41.1%	2.3%	5.7%	0.8%



Internet & Q Connection

LCAP Educational Partners Survey 2024-25



For those reporting that they are not using Q Parent/Student Connection, these are the reasons reported why it is not being used

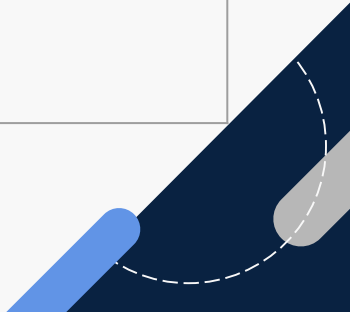
Survey Group	Access to Internet at Home	I use Q Connection	Too Difficult	No Internet	No login/ password	I've had trouble but didn't ask for help	I don't know who to ask for help	I don't have a computer or smart-phone	I'm not familiar with Q Connection
Spanish Survey-187	95%	85%	21%	6%	6%	21%	10%	3%	21%
English Survey-774	99%	88%	23%	0%	19%	11%	3%	6%	38%
Student Survey-2,748	97%	79%	11%	3%	7%	3%	1%	3%	71%

Use of Canvas to Review Grades & Work

LCAP Educational Partners Survey 2024-25



Parent Group	Yes	No
Spanish Survey - 187	67%	33%
English Survey - 774	43%	57%



Parent Engagement

On average, how many school events/training do you attend?



Parent Group	1 to 2	3 or more	None
Spanish Survey- 187	50%	42%	8%
English Survey- 774	37%	53%	10%

Parent Engagement

For those that marked NONE, I have not attended any school event or training because:



Parent Group	Not provided enough information or notice	Held at an inconvenient time	No childcare was provided	Not held in a language I understand	Not interested	Other
Spanish Survey- 187	6%	63%	13%	6%	6%	6%
English Survey - 774	16%	31%	9%	1%	37%	5% See Below

Other Reasons: Had other commitments

Parents would like the following trainings

LCAP Educational Partners Survey 2024-25



Parent Group	Parent Classes	CA State Standards	Anti-Bullying	Drugs, Alcohol, Tobacco Abuse & Awareness	Mental Health / Suicide Prevention	College & Career Readiness	Internet Safety (phones, social media, etc.)
Spanish Survey - 187	16%	20%	9%	4%	2%	2%	6%
English Survey - 774	23%	13%	14%	5%	10%	23%	7%

* Participants were asked to choose all that apply or could leave it blank

MUSD Technology Focus

LCAP Educational Partners Survey 2024-25



Parent Group	Our Schools need better internet connectivity	Our students need more availability of WiFi hotspots	Our students need more training and protocols in using technology	Our staff needs more training to use instructional technology	We don't need any more technology in our school
Spanish Survey- 187	25%	7%	38%	9%	10%
English Survey- 774	13%	5%	37%	10%	32%
Student Survey- 2,748	31%	7%	6%	12%	34%
Staff Survey- 419	24%	<1%	25%	19%	18%

* Participants were asked to choose all that apply or could leave it blank

For TK-6th Grade Parents, are you Interested in After School Programs for your Child(ren)?



LCAP Educational Partners Survey 2024-25

Parent Group	Yes	No
Spanish Survey- 187	88%	12%
English Survey- 774	75%	25%

For TK-6th Grade Parents, are you Interested in a Dual Language Immersion Program? LCAP Educational Partners Survey 2024-25

Parent Group	Yes	No	Maybe - I need more information
Spanish Survey- 187	77%	12%	11%
English Survey- 774	32%	43%	25%

Parent Spanish - MUSD Climate Survey

LCAP Educational Partners Survey 2024-25



Rating	I feel well-informed & communicated with about my child's progress	When I call or visit schools, I feel listened to and welcomed	My child feels connected to his/her school & teacher	Overall, my child feels safe at school	My child's school facilities are clean and inviting
Strongly Agree	63%	65%	63%	62%	64%
Agree	36%	32%	34%	34%	34%
Disagree	0%	2%	0%	2%	0%
Strongly Disagree	99%	97%	97%	96%	97%

Parent English - MUSD Climate Survey

LCAP Educational Partners Survey 2024-25



Rating	I feel well-informed & communicated with about my child's progress	When I call or visit schools, I feel listed to and welcomed	My child feels connected to his/her school & teacher	Overall, my child feels safe at school	My child's school facilities are clean and inviting
Strongly Agree	44%	50%	49%	44%	39%
Agree	50%	44%	46%	52%	54%
Disagree	5%	5%	5%	4%	6%
Strongly Disagree	94%	94%	95%	96%	93%

Staff - MUSD Climate Survey

LCAP Educational Partners Survey 2024-25



Rating	At my site, there is a belief that all students are capable of succeeding	Parents & students are well-informed about student progress at my site	Parents & students are listened to and welcomed at my site	I feel connected to my site	Overall, I feel safe at school	My site's facilities are clean and inviting
Strongly Agree	67%	61%	68%	64%	59%	45%
Agree	30%	37%	30%	32%	38%	49%
Disagree	97%	98%	98%	96%	97%	94%
Strongly Disagree	0%	0%	0%	<1%	0%	2%

Students - MUSD Climate Survey

LCAP Educational Partners Survey 2024-25



Rating	I am well-informed about my grades and progress in my classes	Adults have asked me what I need to do well at school.	I feel connected to my school & teacher	This school is a safe and welcoming place for people of all backgrounds and cultures.	My school is clean and inviting
Strongly Agree	40%	24%	18%	42%	16%
Agree	53%	47%	66%	45%	65%
Disagree	3%	28%	16%	13%	15%
Strongly Disagree	1%	8%	3%	4%	4%

Students - MUSD Climate Survey

LCAP Educational Partners Survey 2024-25



Rating	Adults at school care about me.	I participate in activities at my school.
Yes	87%	77%
No	13%	23%

Students - MUSD Climate Survey

LCAP Educational Partners Survey 2024-25



Rating	Adults at school encourage me to work hard so I can be successful.	Overall, my classes are challenging and interesting.	Adults at school believe I can do great things.
Strongly Agree	43%	14%	42%
Agree/Yes	46%	72%	49%
Disagree/No	89%	86%	91%
Strongly Disagree	27%	27%	27%

Parent and Family Engagement Policy



Parent and Family Engagement Policy

- Overview of Policy
- Policy Development and Input
 - ELAC/DELAC
 - Title I Parent Meetings
 - LCAP Parent Advisory Committee





District Parent and Family Engagement Policy

The purpose of the policy is to describe and inform parents and families of the requirements of Title I as well as how the district is carrying out policy requirements. MUSD has developed a written Title I Parent and Family Engagement Policy with input from parents and family members of participating children.



2024-2025

Title I, Part A LEA Parent and Family Engagement Policy

Describe how parents and family members will be involved in the development of the LEA Plan and support and improvement plans under ESSA Section 1111(d)(1-2) (ESSA Section 1116[a][2][A]):

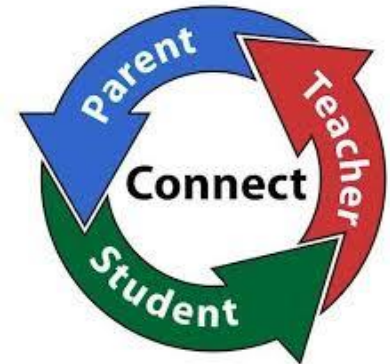
MUSD annually surveys parents and family members to gather feedback about what is working and areas of improvement around the LCAP, the LCAP Federal Addendum, as well as school goals and actions. Stakeholder feedback is also gathered at school meetings, district meetings, and school parent advisory committee meetings, such as School Site Council (SSC) meetings, Title I Parent meeting, English Learner Advisory Committees (ELAC), District English Learner Advisory (DELAC), LCAP Parent Advisory, Bilingual Coffee Chats, and through other means. The information gathered is used to revise the district's LCAP, the LCAP Federal Addendum, and the sites' School Plan for Student Achievement (SPSA).



Each table will rotate to each chart

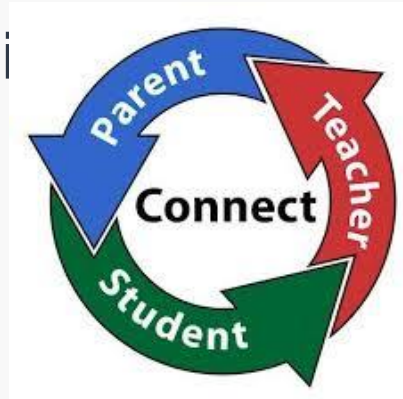
District Parent and Family Engagement Policy

How can we increase participation of families at our district and site family engagement events?



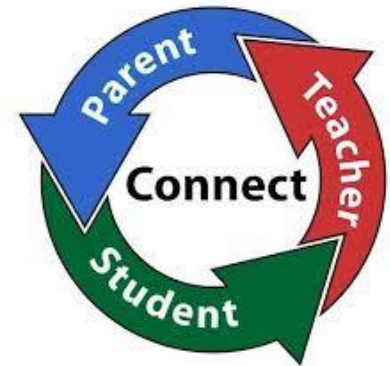
District Parent and Family Engagement Policy

What are some of the barriers to families attending our engagement nights, coffee chats or parent advisory meetings?



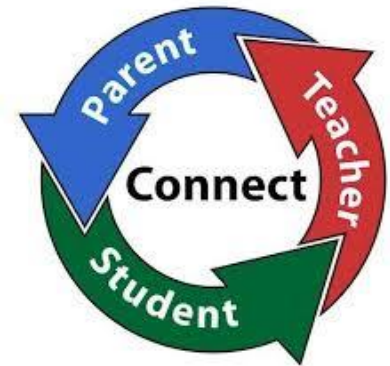
District Parent and Family Engagement Policy

What are the MUSD successes in engaging parents and families in their child's achievement?



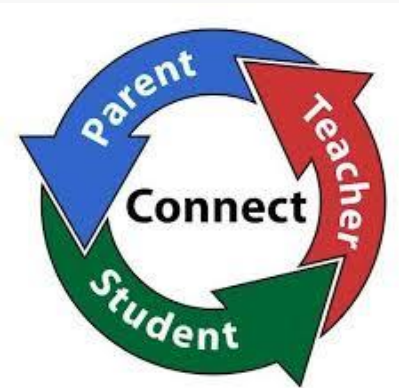
District Parent and Family Engagement Policy

Preference in how parents receive this type of policy
(e.g., paper copy, handbook, email, etc.)



District Parent and Family Engagement Policy

What are MUSD's greatest assets?



Next Steps



Annual Update 2024-25

- Data collection and reporting on measurable outcomes, actions, and services

LCAP Draft 2025-26

- Informed by: Surveys, Annual Update 24-25, and Data
- Draft shared with LCAP Parent Advisory Group
- Public hearing at June 16, 2025 school board meeting
- Approval at June 18, 2025 school board meeting

Next LCAP Parent Advisory Meeting – June 5, 2025

- 2024-25 Annual Update Review
- 2025-26 LCAP Draft Review

MUSD LCAP Timeline

January 22, 2025
& March 18, 2025

Review LCAP Goals,
PFEP, & Review LCAP
Survey results

November

June

February

November 14, 2024

Review LCAP Goals, Data
& Complete LCAP Survey

June 5, 2025

Input on draft LCAP
including Annual Update

- Board presentation
June 16, 2025 and
Board Approval
June 18, 2025

Announcements

- Newly adopted Elementary Science Materials in classrooms
- Provided scholarships for 6th grade students for Outdoor School
- All Comprehensive Schools have Wellness Spaces and wellness counselors
- Enrollment for the 2025-26 School Year opened January 21, 2025
- Secondary History Social Studies Adoption Gr. 6-12: In Process
- Buzz gates at the Entry Point/Main Office at ALL schools
- Solar Panels at ALL schools - Nearly complete (MM and MHS in summer)
- Continuing “No Place For Hate” at all three middle schools
- Anti-bullying/Becoming an Upstander presentations for all 4th and 5th grade Feb.4-6
- TK-12th Grades Math Audit Committee
- Professional Development 1/27 & 3/10
- Spring GATE Testing for all 3rd grade students Jan. 27-31
- ELPAC Testing in progress
- Spring and Summer ELOP and Find My Genius for eligible TK-6th Gr. students
- Partnership with Clinicas returns to MUSD
- 2025-26 TK class size ratio from 24:2 to 20:2
- Triple P classes Feb. 27 - Mar. 15 available in English and Spanish
- “Who Is This Kid? Understanding and Structuring Teen Behavior” Parent Workshop - Mar. 3
- Expansion of CTE programs
- Federal Program Monitoring on a multiyear cycle
- CNS Healthy Food Options - Now Includes Vegan Options
- SSLF - Superintendent’s Student Leadership Forum

Congratulations

- CA Green Ribbon Bronze recipient 2024
- CDE/SIP Heart of Inclusion Award 2023
- CalSPRA Awards of Excellence and Merit for MUSD Communications (Dan Wolowicz, PIO) 2023 & 2024
- ADL Educators of the Year - Dr. Wagmeister and Mrs. Vega 2023
- Roy L. Erickson Civic Education Award - CC Teacher Katie Eich 2025
- AP Program Success: 799 AP exams in 23 subjects= 88% Pass Rate!
- MUSD presented at the Ca Assessment Conference
- MUSD to present a CDE/WestEd webinar on Interim Assessment Blocks June 2025
- 13 Electric Buses (no cost to MUSD) First electric fleet in Ventura County!
- WASC 6 year Accreditation at both HSMC and MHS
- YMCA Community Partner Award 2023
- MUSD First Mariachi Band! Chaparral Middle School







Thank you for your participation and partnership!

