



# **Disability Awareness**

American Sign Language

(ASL)

3rd grade

# Disability Review

- **What is a disability?**
  - Something that makes it difficult or not possible for someone to do something most people can do
- **People with disabilities are still capable! They may just need additional resources to help them.**
- **We may not all have the same abilities, but we all deserve kindness and respect!**



# American Sign Language

True

or

False



American Sign Language  
is commonly known as ASL.

True



or

False



American Sign Language  
is commonly known as ASL.

*True*



ASL is used as a communication tool for people who are deaf or hard of hearing.

**True**



**or**

**False**



ASL is used as a communication tool for people who are deaf or hard of hearing.

***True***

However, ASL also can be used by other people as well - usually those who have a difficult time expressing themselves through talking.

For example, people with Autism, Down Syndrome, or speech delays. Some people also teach their babies signs to communicate before they learn to talk.



**American Sign Language  
is spoken all over the world.**

True



or

False



# American Sign Language is spoken all over the world.

*False*

There are around 300 sign languages used worldwide! Each culture and country has a unique version, though some do have similarities.



ASL is just using body language to communicate or act out what you mean.

True



or

False



ASL is just using body language to communicate or act out what you mean.

*False*

ASL is like any other language. It has its own grammar and vocabulary! Each word has specific hand movement to represent it.

Body language is the nonverbal cues and signals we use, like eye contact, posture, facial expressions, or gestures.



People who can hear can also use ASL.

**True**



**or**

**False**



People who can hear can also use ASL.

*True*

People who hear can use ASL to communicate with others who are deaf.

Also, some disabilities that utilize ASL do not impact hearing. (i.e. autism or speech delays)



**American Sign Language means spelling out what you want to say using the ASL alphabet.**

True



or

False



**American Sign Language means spelling out what you want to say using the ASL alphabet.**

*False*

While you can spell out words, most words have one sign/movement to describe them.

People who use ASL even choose a sign to represent their name after they spell it out when they introduce themselves for the first time



Only humans can be deaf  
and use ASL.

True



or

False



Only humans can be deaf and use ASL.

*False*



**Animals can also be deaf! There are animals, like dogs, that are trained to understand sign language!**



# Movement Break



# ASL in the classroom

- American Sign Language is also used in spaces like the classroom to allow students to communicate with teachers at a level zero.
- Do your teachers use any of these signs?



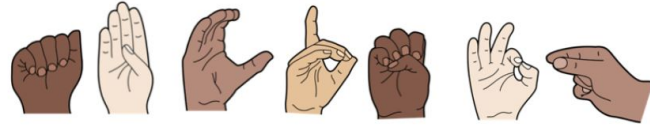
# Signs you can use daily!



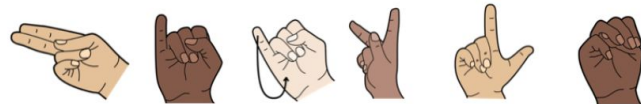
# Activity *Introduce yourself*



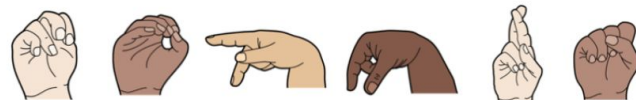
## American Sign Language Alphabet



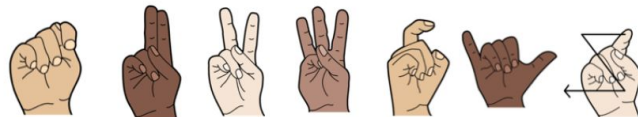
A B C D E F G



H I J K L M



N O P Q R S



T U V W X Y Z

*Since you do not yet have a sign name,  
you will fingerspell your name.*

# Activity with ASL colors



Name: _____			orange
<b>ASL Color by Code</b>			

Answer Key			orange
<b>ASL Color by Code</b>			