

Arts & letters™

Join us on a journey of knowledge as we peek into the daily lessons of an Arts & Letters™ module. In this module, students will explore what having a *great heart* means literally and figuratively.



1 SPACE = 1 DAILY LESSON	LANGUAGE/ READING	
	HISTORY	WRITING
	SCIENCE	VISUAL ART

Part 1

Arts & letters™

In the Literal Lagoon, students explore a *great heart* from a literal perspective by reading and writing about the function of their circulatory system.

THIS WAY!

Demonstrate fluency and comprehension with a new text related to the heart.

Explore the root *circ.*

Time for a Reading Comprehension Assessment and Module Task 1.

Demonstrate understanding of the module topic.

Share the knowledge built about the circulatory system.

Use conjunctions to write two knowledge statements.

Talking Tool

Listen Closely

What do you mean by _____?

Can you tell me more about _____?

What evidence supports your idea?

How does your idea relate to _____?

Share What You Think

I think _____ because _____.

First, _____ Also, _____ Finally, _____.

I agree and I will add that _____.

I disagree because _____.

I hear you say that _____ This makes me think that _____.

I hear you say that _____ However, _____.

Support What You Say

In the text, _____.

For example, _____.

One reason is _____ Another reason is _____.

This evidence shows _____.

This evidence means _____.

This evidence is important because _____.

What do we learn about the circulatory system through the journey of the little green creature?

Describe the human heart and blood vessels, and start collecting evidence for the Module Task, an informative essay.

Complete the Evidence Organizer with four pieces of evidence.

How do the illustrations in *The Circulatory Story* make cellular respiration easier to understand?

Painted Essay® — Informative

Introduction

Lighten the reader's vision, give some background context.

Thesis

point #1 point #2

Proof Paragraph #1

topic sentence

Proof Paragraph #2

topic sentence

Conclusion

What? (ask your class!) So what? (ask you!)

Key: red = introduction green = body blue = conclusion

Learn how the Painted Essay® can help organize thinking and lead to clear writing.

Learn the difference between a simile and a metaphor.



Science meets ELA! Begin a close reading of *The Circulatory Story* by Mary K. Corcoran.

Ready to learn about your heart as a muscle?

LITERAL LAGOON

Part 2

1 SPACE
= 1 DAILY
LESSON

LANGUAGE/ READING

HISTORY

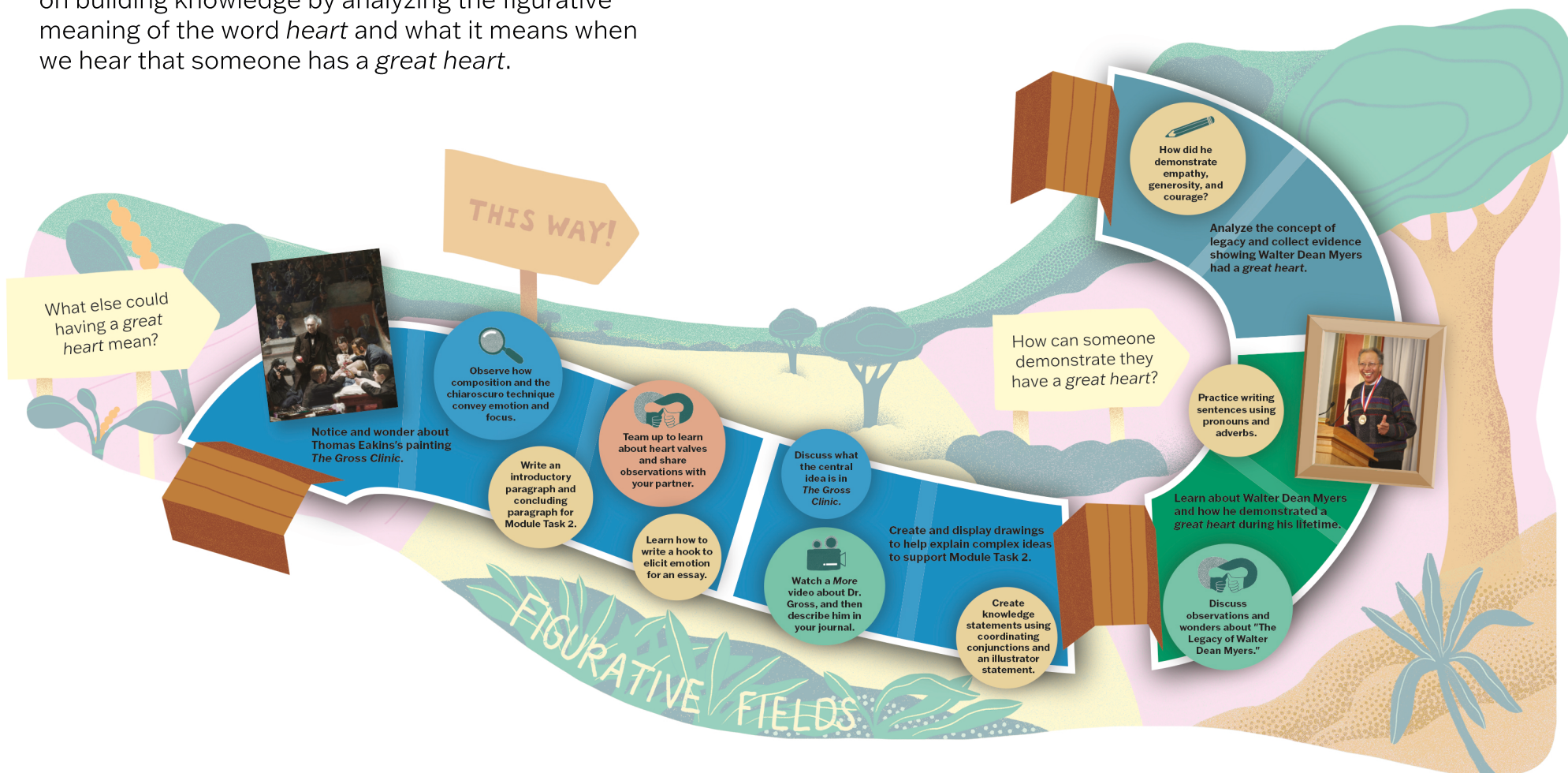
SCIENCE

WRITING

VISUAL ART

Arts & letters™

During the next two weeks, students concentrate on building knowledge by analyzing the figurative meaning of the word *heart* and what it means when we hear that someone has a *great heart*.



1 SPACE = 1 DAILY LESSON	LANGUAGE/ READING	WRITING
	HISTORY	VISUAL ART
	SCIENCE	

Part 3

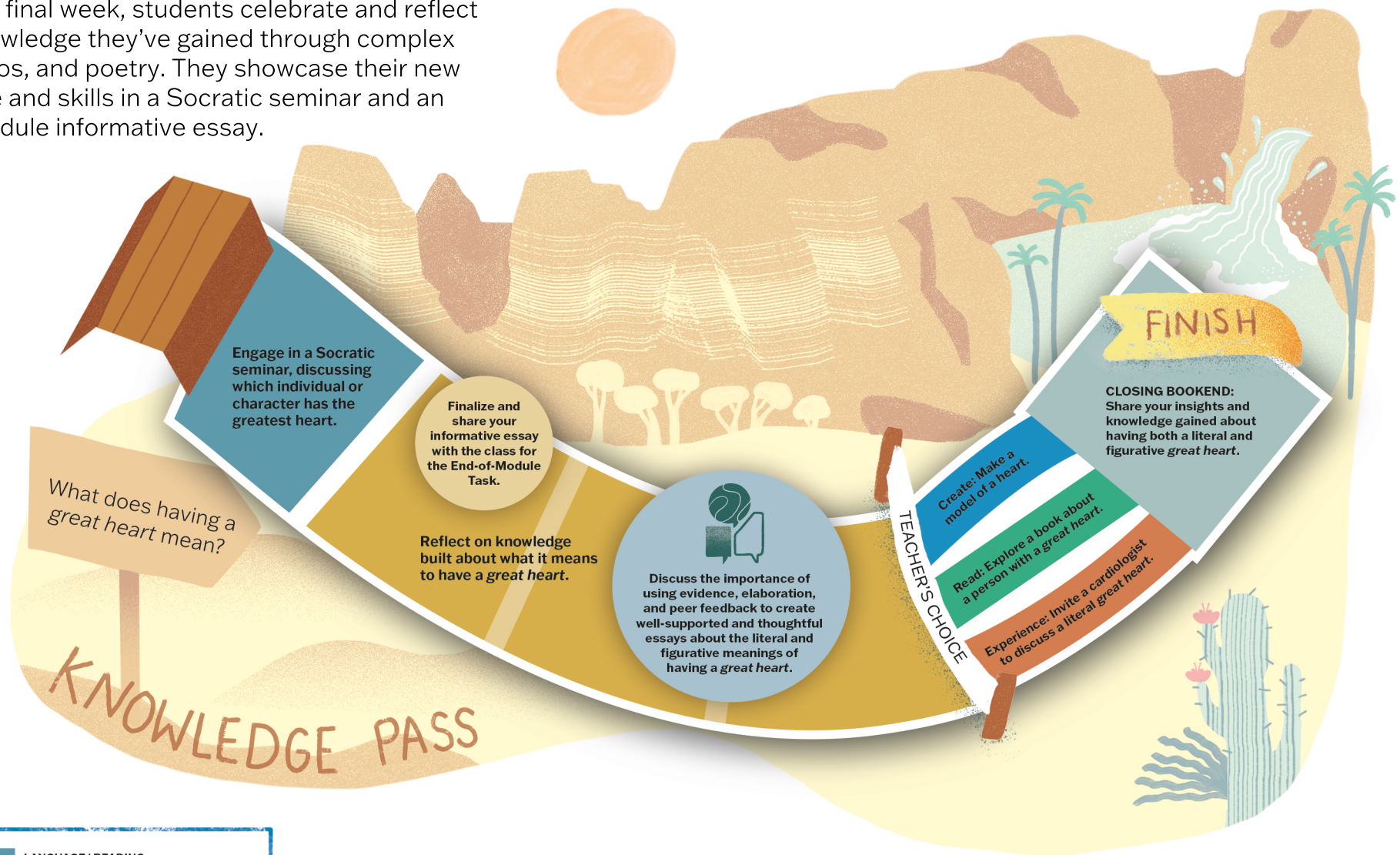
Arts & letters™

During the following two weeks, students explore a story that seamlessly weaves poetry into their learning, and they begin to craft their own poems.



Arts & letters™

During the final week, students celebrate and reflect on the knowledge they've gained through complex texts, videos, and poetry. They showcase their new knowledge and skills in a Socratic seminar and an end-of-module informative essay.



1 SPACE = 1 DAILY LESSON	LANGUAGE/ READING	WRITING
	HISTORY	VISUAL ART
	SCIENCE	