



SAN BERNARDINO CITY
UNIFIED SCHOOL DISTRICT
Making Hope Happen

Mauricio Arellano

SUPERINTENDENT

SAN BERNARDINO CITY
UNIFIED SCHOOL DISTRICT





RILEY
COLLEGE PREP
ACADEMY



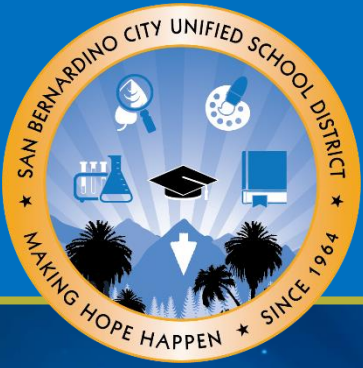
**GOLDEN
VALLEY**
MIDDLE SCHOOL



**SAN
BERNARDINO**
HIGH SCHOOL







San Bernardino City Unified School District

Operating Values

HUMAN POTENTIAL

We believe that every individual can learn and exceed expectations.

EQUITY

We believe that every individual has the right to be treated with dignity, kindness and respect and has the right to access a quality education that meets their individual needs.

SAFETY

We believe that students learn best in an environment in which there is a sense of belonging and where all feel safe—physically, socially and emotionally.

COLLABORATION

We believe that when students, families, teachers, staff and the community unite around shared values and a vision for education; it can transform a child's life and enrich the vitality of the community.

PROFESSIONALISM

We believe that our students deserve our very best every day.

RESILIENCE

We believe that our ability to overcome adversity propels us to grow, adapt and succeed.

INNOVATION

We believe in investing in our people so they can continue to adapt and think creatively.

DIVERSITY

We believe that our rich cultural diversity is a strength and that the more we embrace different voices and perspectives, the better our decisions and our ability to advance as a community.

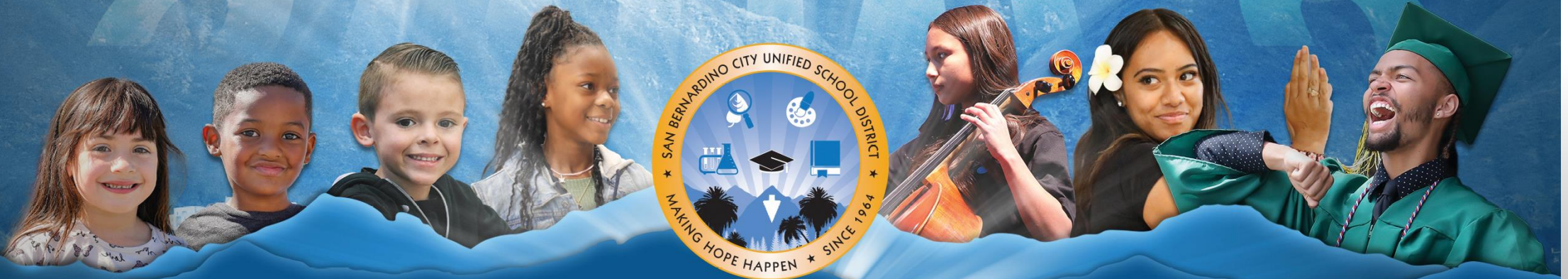
PRIDE

We believe that when our children and our families thrive and take pride in our schools, the community will thrive.

VISION 2030

SBCUSD

SHINES



Cultivating pride and purposeful futures for students to thrive right here!

The mission of San Bernardino City Unified

Our mission is to ensure that each student has the skills, resilience and determination to create their path and thrive in school, career and life.



Vision 2030 will focus on six pillars:

S BCUSD Strong

High expectations for academics and innovation to be college and/or career ready

Involvement of students, family, community and staff

Nutrition, health and wellness

Equity as a foundation

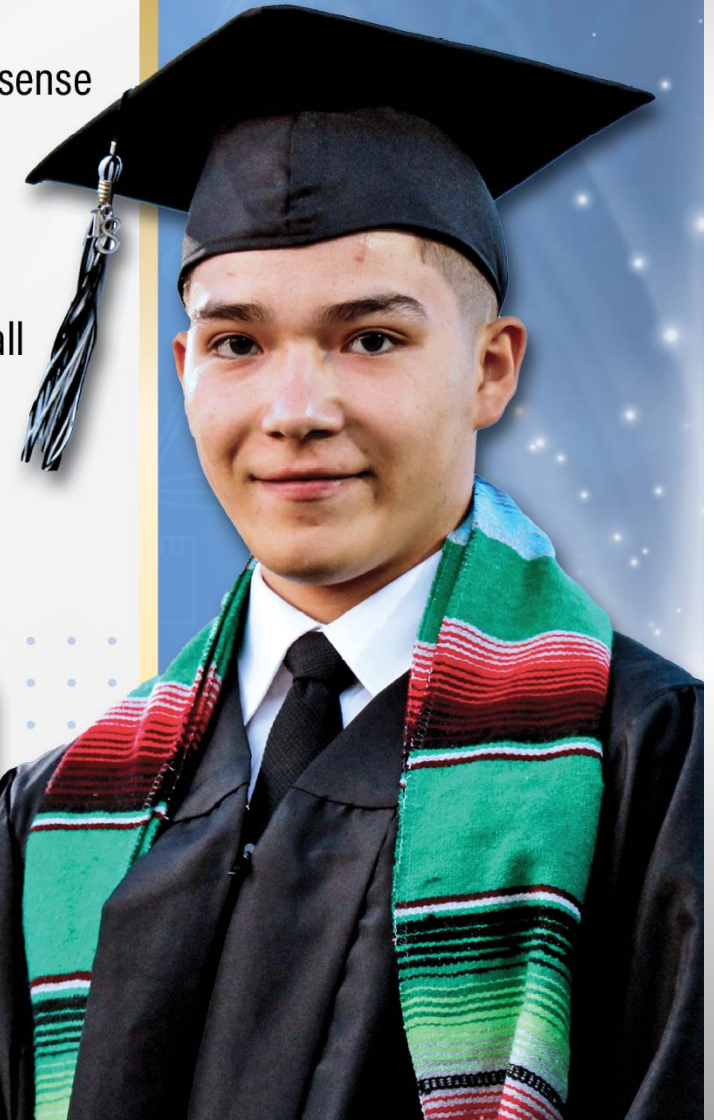
Safe, secure and attractive learning environments



S

BCUSD Strong

- All students have the support they need to be strong—academically, physically, socially, emotionally and financially.
- All students are comfortable expressing who they are and have a strong sense of belonging.
- All students are prepared for college and/or career to be civically active and engaged citizens.
- District personnel have the skills and commitment to meet the needs of all students today and to inspire them as future leaders in our community.
- SBCUSD invests in the development of healthy children and families who take pride in their community.



#SBCUSDStrong



H

igh expectations for academics and innovation to be college and/or career ready

- All students make progress towards meeting the benchmarks for academic proficiency in reading, writing and mathematics.
- Students complete A-G courses, dual enrollment courses, Advanced Placement (AP) courses and multilingual courses in increasing numbers.
- Science, Technology, Engineering, Arts and Mathematics (STEAM), robotics and computer science are implemented at all grade levels and are embedded within District curriculum.
- Career Technical Education (CTE) programs and paid internship opportunities prepare students for success in the workforce.
- Multi-tiered support services allow students to focus on academic achievement.



Involvement of students, family, community and staff

- All schools are community hubs, providing resources that support student needs and promote active family participation.
- Parent leaders are developed in order to help parents navigate the educational system.
- Open lines of communication and two-way dialogue are in place with students, families and the community.
- Early childhood and adult education programs ensure lifelong learning, cradle to career.
- Student success is bolstered through collaborations with local colleges and universities, trade schools, local service groups, faith-based organizations and government officials, among others.

Vision 2030



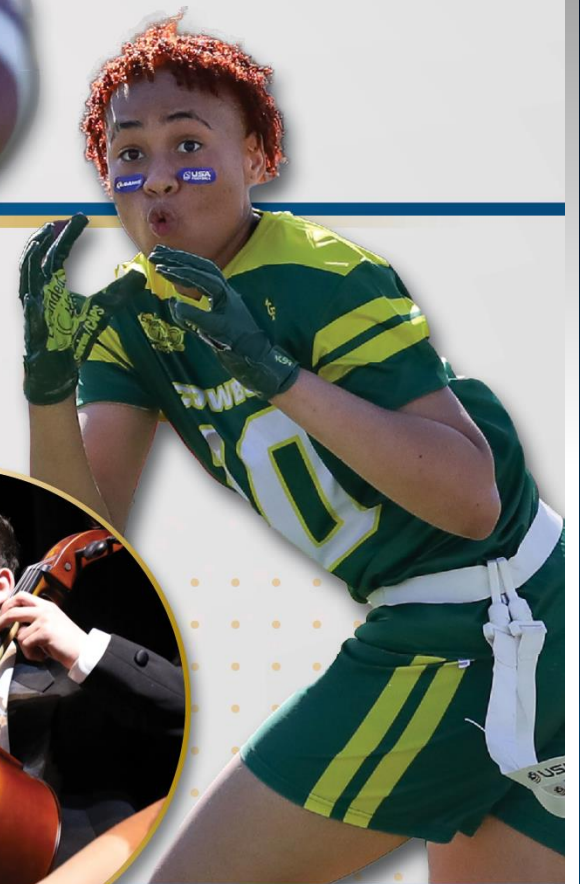
For a list of all educational partners, please visit sbcusd.com/vision2030.



N

utrition, health and wellness

- A commitment to wellness—physical, mental, socioemotional, in order to support a high quality of life.
- Daily attendance increases to maximize instructional time.
- Students provide input into the selection of healthy food choices at their schools.
- Anti-bullying and restorative justice initiatives support inclusive practices.
- Visual and Performing Arts (VAPA) and Extended-learning programs support academic wellness and enrichment opportunities.



E

quity as a foundation

- Our diverse cultures are celebrated throughout the year at all schools.
- Tailored instruction supports all student groups in achieving academic proficiency, with a focus on the needs of African American students. (Board Policy 6012.1) For more information, visit sbcsd.com/tiip.
- Cultural and social understanding is evident in inclusive practices around the District and culturally responsive training is implemented.
- Schools that have historically maintained significant academic achievement gaps are provided the necessary resources to expedite improvement.
- Inclusive excellence and a high level of customer service is the standard across the District.



Safe, secure and attractive learning environments and facilities

- All schools and facilities are safe, secure and welcoming.
- Students and District staff are kind and respectful and build positive, caring relationships with each other and the community.
- Schools and facilities will be clean, attractive and well-manicured.
- Staff will be trained with the most updated strategies, systems and protocols that promote safety.
- Resources will be allocated to maintain and enhance 21st-century learning environments.

