



Student Population Forecast by Residence School Year 2024/25 – 2034/35 Report

Orting School District

FEBRUARY 27, 2025

Submitted by:

MGT

4320 W. KENNEDY BLVD., SUITE 200
TAMPA, FLORIDA 33609

850.445.4405

This page intentionally left blank.

Table of Contents

EXECUTIVE SUMMARY	1
INTRODUCTION AND BACKGROUND	1
KEY ITEMS IN THE DISTRICT-WIDE ANALYSIS:	2
1. METHODOLOGY	3
DATA SOURCES	3
FORECAST METHODOLOGY	4
FORECAST FACTORS.....	6
STUDENT INFORMATION	12
ATTENDANCE MATRIX	13
RESIDENT STUDENT POPULATION FORECASTS	15
FORECAST TRENDS.....	15
4. ATTENDANCE AREA FORECASTS	19
TREND SUMMARIES BY ELEMENTARY, MIDDLE AND HIGH SCHOOL	19

Executive Summary

Introduction and Background

Orting School District has contracted with MGT to develop and analyze demographic data relevant to the district's facility planning efforts. The scope of contracted work includes updating district mapping files, analyzing the district using the previous four years of geocoded student data files, developing, and researching pertinent demographic data in and around the district, identifying current and future residential development plans and preparing a ten-year student population forecast.

The purpose of this report is to identify and inform the district of the demographic trends occurring within the community, how these trends may affect future student populations, and to assist in illustrating facility adjustments that may be necessary to accommodate the potential student population shifts, to assist the district in evaluating future site requirements and the need for potential attendance area changes.

MGT, a non-biased third-party consultant, has been contracted to prepare and maintain a ten-year demographic study. In this study, MGT produced detailed neighborhood and attendance area population forecasts based on the residential address of students. MGT bases its forecasts on the belief that school facility planning is more accurate when facilities are located where the greatest number of students reside. This study is intended to help the district notice specific demographic trends that could assist them in making informed decisions regarding long-range planning efforts.

The Data Sources section details how the two sources of data – geographic and non-geographic -- are collected and used in the ten-year student population forecast model.

The Forecast Methodology section discusses, in detail, how the factors used in the study were calculated, and why they were used. These factors include area birthrates and their effect on incoming kindergarten classes, the effects of student mobility, student yield factors based on historic housing data and trends, and a detailed review of future residential development within the district.

The Student Resident Forecast Summary sections offer a review of this year's student resident forecast results. These sections include the district-wide student population forecast summary and a forecasted resident student population summary for both the existing attendance areas and the individual study areas from which they were calculated.

While reading this report, it is important to remember that it is based on data gathered at the time of the study. Due to potential population shifts, changes in development plans, fluctuating funding opportunities, and district priorities, all findings presented in this report are subject to change.

Key Items in the District-Wide Analysis:

- **Purpose of the Report**
The report aims to analyze demographic trends and project student population changes over a 10-year period (2024/25 – 2034/35) to support facility planning and potential attendance area adjustments.
- **Data Sources**
The study uses geographic and non-geographic data, including student residence locations, school facility information, planned residential developments, and historical student data.
- **Forecast Methodology**
A modified cohort model is used, combining past student population trends, demographic characteristics, and housing development projections to estimate future student enrollment.
- **Birth Rate Trends**
Birth rates are analyzed to predict incoming kindergarten class sizes. While national birth rates may decline, residential growth in Orting may offset this trend.
- **Student Mobility Factors**
The report assesses student movement within and outside the district, considering factors like housing turnover, private school enrollment shifts, and early graduations.
- **Planned Residential Developments**
There are 23 active or planned residential projects in the district, with thousands of new housing units expected to contribute to enrollment growth.
- **Student Yield Factors (SYF)**
On average, each 100 single-family homes contribute 49 students, while 100 multi-family units contribute 25 students, impacting future school capacity needs.
- **District-Wide Enrollment Forecast**
Student enrollment is expected to increase significantly, growing from 2,765 students in 2024 to approximately 6,075 students by 2034, driven by residential growth.
- **Attendance Area Forecasts**
Elementary, middle, and high school attendance areas show varying growth rates, with some areas expected to see more than a 50% increase in student population over the next decade.

1. Methodology

Data Sources

Geographic Map Data

Five (5) geographic data layers were modified or created for use in the ten-year student population forecasts:

STREET CENTERLINE DATA/PARCELS

Street centerline/parcel data files are utilized during the geocoding process of the student data. The geocoding process places a point on the map for every student in the exact location the student resides. Each student is geocoded to the parcels by their given residence address. This enables MGT to analyze student data geographically.

STUDY AREAS

Study areas are small geographic areas – such as neighborhoods or portions of neighborhoods – that are considered the building blocks of school district attendance areas. Study areas are geographically defined following logical boundaries within a school district, such as freeways, streets, railroad tracks, or green space. Each study area is then coded with the corresponding elementary, middle, and high school that the students in the area are assigned to attend. By gathering information about the district at the study area level, MGT and OSD can closely monitor growth and demographic trends in regions and identify the potential need for boundary or facility adjustments. Currently, 70 study areas make up the school district.

SCHOOLS

School facility information, including school names, addresses, unique identifying codes, grade ranges, and capacities, was provided to MGT by district staff.

PLANNED RESIDENTIAL DEVELOPMENT

Residential development data was obtained through discussions with the local municipalities. MGT researched possible new developments that could impact future student counts and reviewed the information with school district staff. This data includes the development name, location, housing type, and the total number of units within the development. The planned residential development information is subject to changes in the marketplace; therefore, this data should be reevaluated annually. MGT and Orting School District were monitoring projects closely during this study.

STUDENT DATA

HISTORIC STUDENT DATA - Historic population data is used to compare past student population trends as well as the effects of mobility (movement of students in or out of existing housing) throughout the district.

CURRENT STUDENT DATA - A student data file representing student membership as of School Year 2024 was provided to MGT by district staff. This data was summarized by grade level and each student was located by residential address to identify current study area populations. This data is used as a baseline for student population forecasts. The forecasts encompass the next ten years from SY2025/26 through SY2034/35.

Forecast Methodology

MGT has created ten-year, residence-based, modified cohort forecasts for each study area in OSD. The forecast methodology used in this study combines historic student population counts, past and present demographic characteristics, and planned residential development to forecast future student populations at the study-area level. District-wide and school-level forecasts are summarized from the individual study area forecasts.

RESIDENCE-BASED

These forecasts are based on where the students reside and where they are assigned to attend school. To provide the most accurate estimate of where future school facilities may be needed, MGT uses the location of where the students reside as opposed to their school of enrollment because we believe that school facility planning is more accurate when facilities are located where the greatest number of students reside. The best way to plan for future student population shifts is to know where the next group of students will be living.

Typically, district-generated forecasts are based on school enrollments and are forecasted for staffing and budgetary needs. However, this method is often inadequate for long-range planning needs, such as the location of future school facilities, because the location of the students is not taken into consideration. A school's enrollment can fluctuate annually not only due to population trends but also due to variables in the curriculum, program changes, school administration, and open-enrollment policies. These variables can skew the apparent need for new or additional facilities in an area.

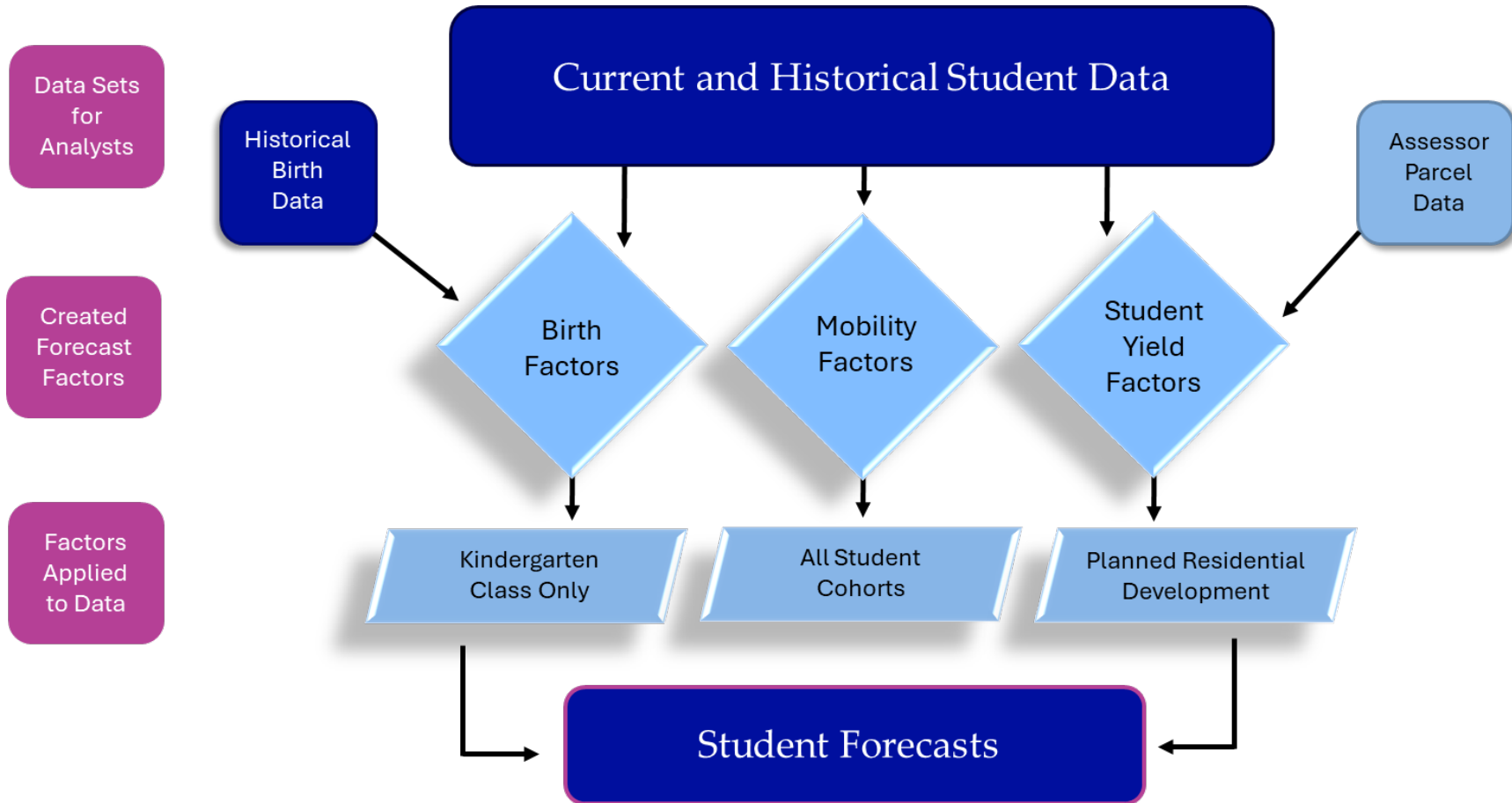
MODIFIED COHORT

The method used by MGT is unique because it modifies a standard cohort forecast with demographic factors and student residential location. For each year of the forecast, 12th grade students graduate and continue students' progress through to the next grade level. This normal progression of students is modified by the forecast variables detailed below.

TEN-YEAR FORECASTS

Projections are calculated ten years from the date of the forecast for several reasons. The planning horizon for any type of facility is typically no less than five years, often longer. Ten years is usually enough to adequately plan for any new facility. Forecasts beyond ten years are based on speculation due to the lack of reliable information on birth rates, new home construction, and economic conditions.

Chart 1: Forecasts by Residence Flowchart



Forecast Factors

There are three primary factors that can directly influence a forecast: birthrates, mobility, and student yield factors. If all factors register at a lower level, they suggest a decrease in the district's population. Conversely, higher factors typically signal growth within the district. Frequently, it's a blend of both scenarios. For instance, national birth rates may be on the decline, but a district can maintain stability or expansion by fostering adequate development to counterbalance the decreasing birth trend.

Birth Rates

MGT uses birth data correlating to the district boundary and applies the data accordingly. The assumption underlying the use of birth statistics from year to year is that increases or decreases in the number of births in the area will translate to increases or decreases in future kindergarten enrollment. For example, the SY2024 kindergarten class in OSD was born five years previous in 2019. Any subsequent changes in births in 2020 compared to 2019 and 2021 to 2019, etc. would result in similar increases or decreases in future kindergarten class sizes.

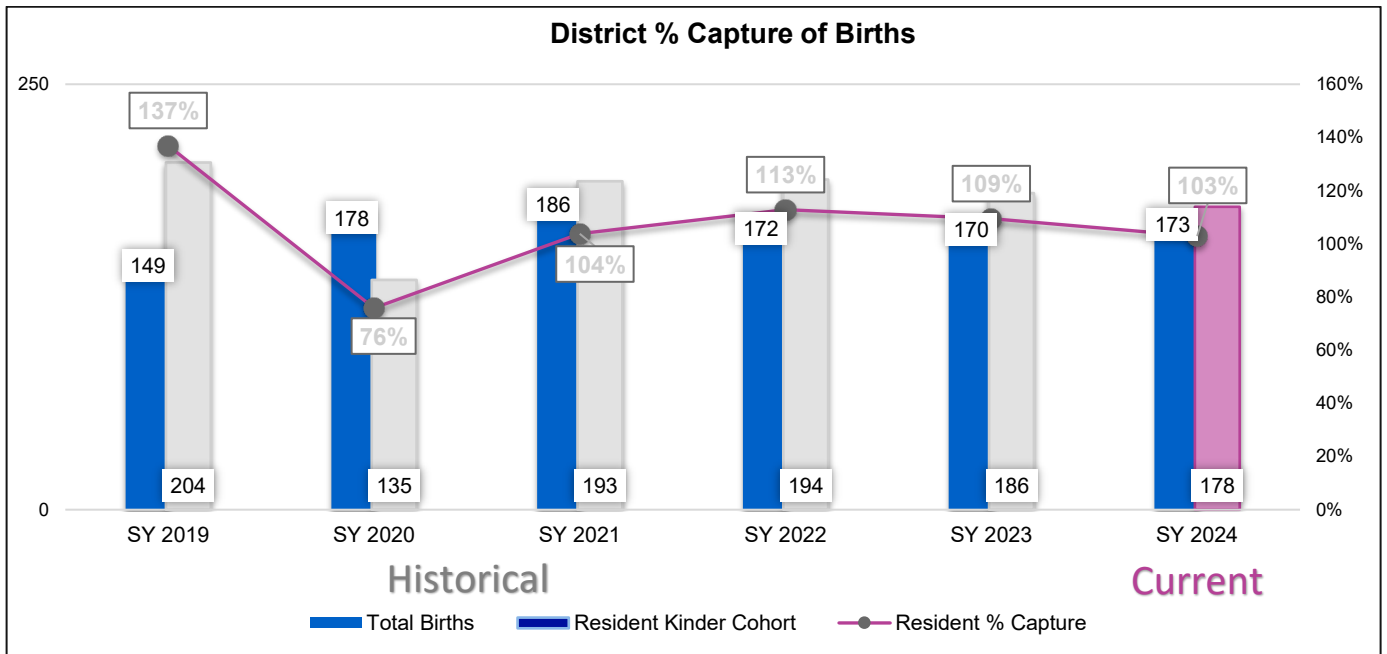
1. METHODOLOGY

TABLE 1: BIRTH FACTORS

Birth data for the district was collected from the State of Washington Vital Statistics to calculate the birth rates applied in the forecast.

Births by Zip Code of Mother				Birth Rate			Resident Kinder Cohort	Resident % Capture	
Birth Year	Kinder Year	98360	Total	% Change*	Rates used in forecast	School Year			
2014	2019	149	149	86.1%			2019/20	204	137%
2015	2020	178	178	102.9%			2020/21	135	76%
2016	2021	186	186	107.5%			2021/22	193	104%
2017	2022	172	172	99.4%			2022/23	194	113%
2018	2023	170	170	98.3%			2023/24	186	109%
2019	2024	173	173			Base Year	2024/25	178	103%
2020	2025	162	162	93.6%		0.936	2025/26		
2021	2026	172	172	99.4%		0.994	2026/27		
2022	2027	196	196	113.3%		1.133	2027/28		
2023	2028	168	168	97.1%	0.971	2028/29			
2024	2029	Birth data was not available at time of study.		103.3%	1.033	2029/30			
2025	2030			104.6%	1.046	2030/31			
2026	2031			101.6%	1.016	2031/32			
2027	2032			103.2%	1.032	2032/33			
2028	2033			103.1%	1.031	2033/34			
2029	2034			102.6%	1.026	2034/35			

CHART 2: CAPTURE RATE OF BIRTHS IN ORTING SCHOOL DISTRICT



Student Mobility Factors

Student mobility factors further refine the student population forecasts. Mobility refers to the increase or decrease in the movement of students within and out of the district boundary’s existing housing. Mobility is a spatial cohort survival rate meaning that it calculates the movement of students from grade in that geographic area. Mobility factors consider apartment movement, housing resales, foreclosures, movement to non-district schools, early graduation, and high school dropout rates. Mobility, like a cohort, is applied as a percentage of increase/decrease to each grade for every year of the forecast.

Mobility is calculated using four years of student data. MGT uses current elementary school attendance areas as the basis to calculate Mobility Factors. Using small geographic areas helps identify and focus on trends within the district. A net increase or decrease of zero students over time is represented by a factor of **1.00** or a 100% pass-through rate. A net student loss is represented by a factor less than 1.000 (such as **.96** or a -4% net loss) and a net gain by a factor greater than **1.00** (such as **1.05** or a 5% net increase).

HOW IS MOBILITY APPLIED?

$$\begin{aligned}
 &100 \quad \text{Kindergarten students in SY2024-25} \\
 \text{Example: } &\mathbf{X} \quad \mathbf{1.03} \quad (\text{Orting ES 1}^{\text{st}}\text{-grade mobility}) \\
 &= \quad 103 \quad \text{1}^{\text{st}}\text{-grade students in SY2025-26}
 \end{aligned}$$

TABLE 2: MOBILITY FACTORS

Attendance Area	K to 1	1 to 2	2 to 3	3 to 4	4 to 5	5 to 6	6 to 7	7 to 8	8 to 9	9 to 10	10 to 11	11 to 12
Orting ES	1.03	1.09	1.00	1.03	1.04	1.08	1.00	1.02	1.01	0.97	1.02	1.00
Ptarmigan Ridge ES	1.03	0.98	1.01	1.00	1.06	1.03	0.97	1.03	1.10	0.92	0.96	1.02

Referencing the table above, it can be determined Orting SD sees an influx in students transitioning into 1st grade and 9th grade as the district recaptures students previously enrolled in private or charter schools .

Student Yield Factors (SYF)

The Student Yield Factors, when applied to planned residential development units, determine how many additional students will be generated from new construction within the district.

Two sets of data are required to calculate Student Yield Factors: a current student file provided by OSD and current housing unit data. In a full SYF Study, the geocoded student data file is overlaid with the housing data to determine how many students reside in each housing type. This allows MGT to associate each student with a specific housing unit. A full SYF study is recommended every 2-5 years depending on the amount of residential growth of the district, the economy or life altering events, such as a pandemic.

The SYF is an important tool for school districts to use in planning for future enrollment growth. By knowing the SYF for different types of housing, districts can get a better idea of how many students they can expect to enroll in the future. This information can be used to make decisions about staffing, facilities, and programming.

The Student Yield Factor (SYF) for Orting School District measures the number of school-aged children residing in housing units built within the last five years. For Orting School District, the SYF is 0.49 for single-family detached (SFD) homes and 0.245 for multi-family attached (MFA) homes. This means that for every 100 single-family detached homes constructed in the past five years, the district gains approximately 49 school-aged children. For multi-family-attached homes, such as townhomes, the district gains about 25 students for every 100 homes built. Moving forward with the forecast, the Orting School District can anticipate an increase in student enrollment from upcoming residential developments based on the Student Yield Factors (SYF).

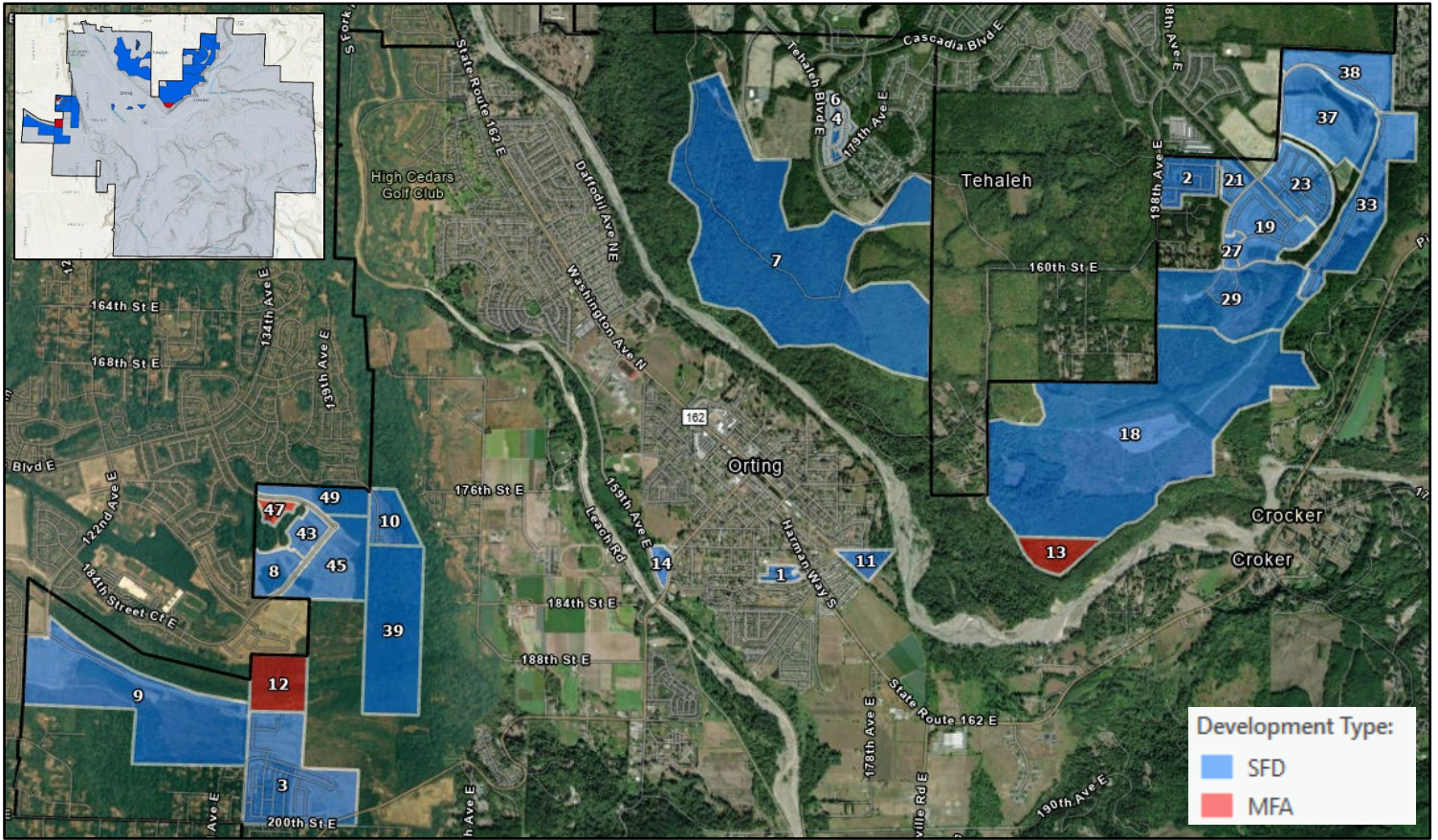
TABLE 3: STUDENT YIELD FACTORS

Grade	Single Family Detached	Multi Family Attached
	Factor	Factor
K-5	0.289	0.14
6-8	0.118	0.056
9-12	0.083	0.049
K-12	0.49	0.245

Planned Residential Development

Closely related to the Student Yield Factors are planned residential development units. Planned residential development data is collected to determine the number of new residential units that will be built over the time frame of the student population forecasts. MGT collected information from city planning departments as well as project developers regarding planned or active construction. Currently, there are 23 active or planned projects in Orting School District.

MAP 1: RESIDENTIAL DEVELOPMENTS



1. METHODOLOGY

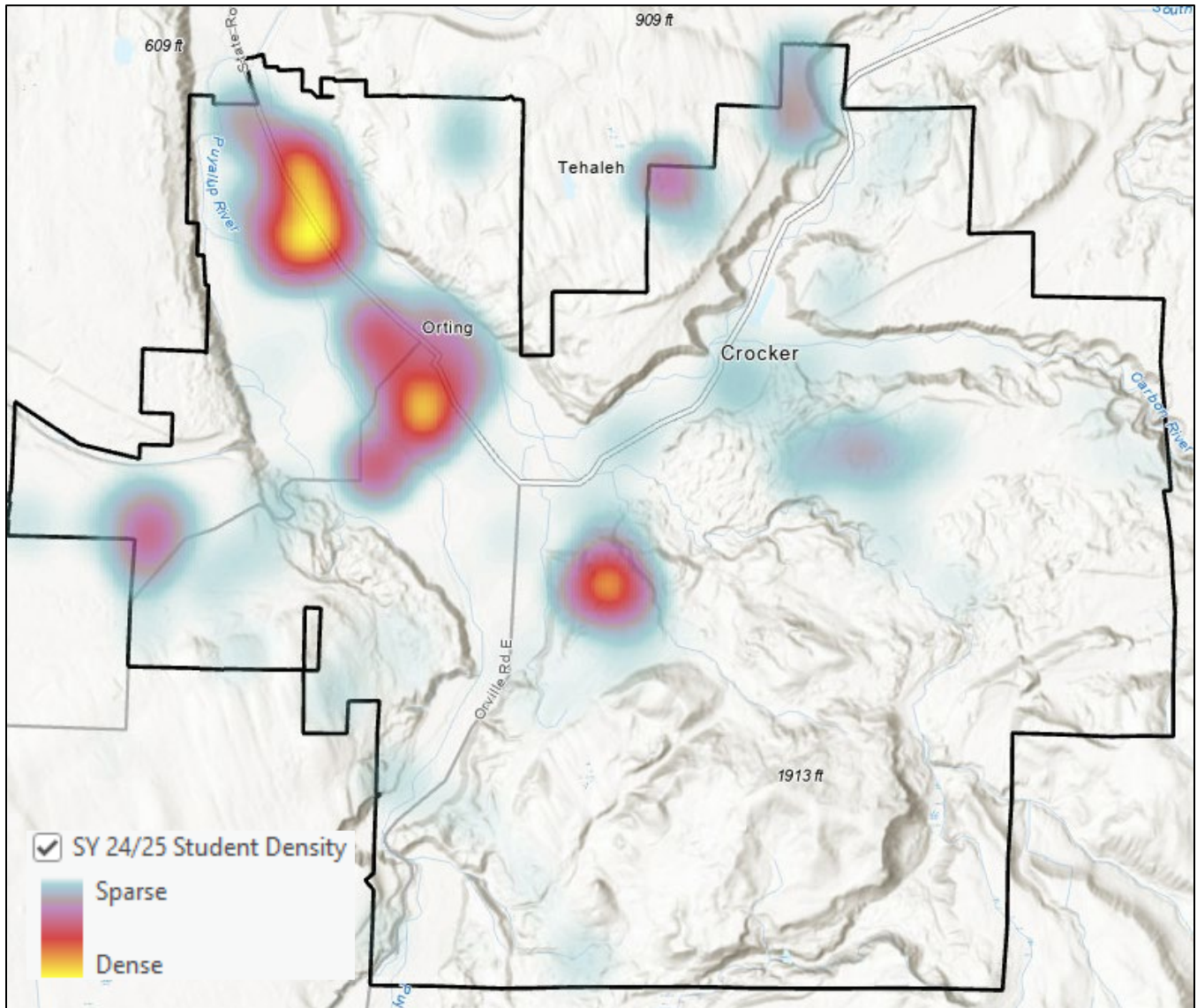
TABLE 4: LISTING OF RESIDENTIAL DEVELOPMENTS

Map ID#	Project	Developer	Unit Type	Status	Total Units	Study Area	Master Plan
Orting ES							
7	Tehaleh - Phase 2 of Master Plan	Newland	SFD	Active	2882	40	Tehaleh
11	Rainier View Estates (Phase 2)	Copper Ridge, LLC	SFD	Planning	41	12	NA
13	Tehaleh - Phase 2 of Master Plan	Newland	MFA	Planning	240	40	Tehaleh
18	Tehaleh - Phase 2 of Master Plan	Newland	SFD	Active	1883	40	Tehaleh
19	Tehaleh - Phase 2 of Master Plan	Brookstone	SFD	Active	200	40	Tehaleh
21	Glacier Pointe @ Tehaleh	Tri-Pointe Homes	SFD	Active	56	40	Tehaleh
23	Verterra Boutique Community	Shea Homes	SFD	Active	240	40	Tehaleh
27	Tehaleh - Glacier Pointe	Lennar	SFD	Active	41	40	Tehaleh
29	Tehaleh - Phase 2 of Master Plan	Newland	SFD	Active	180	40	Tehaleh
33	Glaciet Pointe @ Tehaleh	Garrette Custom Homes	SFD	Active	35	40	Tehaleh
37	Tehaleh - Phase 2 of Master Plan	Newland	SFD	Active	210	40	Tehaleh
38	Tehaleh - Phase 2 of Master Plan	Newland	SFD	Active	145	40	Tehaleh
Ptarmigan Ridge ES							
3	Daybreak	Lennar	SFD	ACT	515	33	NA
8	Uplands	Lennar	SFD	ACT	70	33	Uplands
9	South Sunrise West	Corliss	SFD	ACT	900	33	Sunrise
10	South Hill Estates	Mitchell Development II, L	SFD	ACT	27	33	South Hills
12	Uplands	Tarragon	MFA	ACT	222	33	Uplands
14	Bridgewater Estates	Bridgewater 801, LLC	SFD	PLN	33	21	NA
39	Uplands	Tarragon	SFD	ACT	901	33	Uplands
43	Uplands	Conner Homes	SFD	ACT	85	33	Uplands
45	Uplands	Tarragon	SFD	ACT	160	33	Uplands
47	Uplands	Tarragon	MFA	ACT	80	33	Uplands
49	Uplands	Tarragon	SFD	ACT	32	33	Uplands
NOTES							
Source: Pierce County, Local Developers, District Officials							
Note: Occupancy information is calculated as of October of each corresponding year.							
Explanation of Housing Types:							

2. Student Information

The forecast relies on student data as its cornerstone. Initially, we gather the latest four years of student information. Engaging in quality checks, including verification through Student Verification forms, we collaborate closely with the district to validate the accuracy of the acquired data. Subsequently, we move on to geocoding the students based on their home addresses. This process allows us to conduct spatial analyses such as creating a Student Density map, Attendance Matrices, and ultimately generating the Student Forecast.

Map 2: Resident Student Density SY 2024/25



Attendance Matrix

An attendance matrix is included to clarify where students live versus where they attend school. It's important to note that MGT bases its forecasts on students' residences rather than their current school enrollments. This approach allows for the most accurate predictions of student population shifts and the optimal locations for future facilities, if needed. As a result, the resident forecast figures for each school may differ slightly from the actual reported enrollment. Given that programs and policies can change, the most effective way to plan for future facilities is by understanding where the upcoming student populations reside, rather than focusing solely on their current school enrollments.

Attendance matrices serve as a check and balance for student accounting by showing where students reside (their School of Residence) based on their geocoded addresses and where they attend (School of Attendance) according to district-provided data. This comparison is crucial for ensuring that the students included in the forecasts align with the district's enrollment records for each school. Additionally, by comparing School of Residence data with School of Attendance data, intra-district transfer patterns can be identified. The student counts in the matrix reflect OSD's enrollment as of the 2024 school year.

Reading the Matrix

The rows of the attendance matrix represent students living within each attendance area, while the columns show the number of students attending each school. As you read across a row, you'll see which schools the students from that attendance area are attending. Reading down a column reveals where the students attending that school live.

For example, on 10/1/2024, Orting Elementary School had 652 students residing in its attendance area. Of those, 465 attended Orting Elementary, 187 attended Ptarmigan Ridge Elementary. In the column labeled Orting ES, the total at the bottom shows that 575 students are enrolled there. Beyond the 465 who live in the Orting Elementary attendance area, 101 reside in the Ptarmigan Ridge Elementary attendance area. Additionally, 9 students enrolled at Orting Elementary School live outside the district boundary.

2. STUDENT INFORMATION

TABLE 5: ELEMENTARY SCHOOL ATTENDANCE MATRIX

Date of Student Data:		10/1/2024		School of Enrollment	
Attendance Area		Grade Range	Count of Students Living within Boundary	Orting ES	Ptarmigan Ridge ES
School of Residence	Orting ES	-1-5	652	465	187
	Ptarmigan Ridge ES	-1-5	624	101	523
	Total Resident		1,276	566	710
	Inter-District Transfers		31	9	22
	Total Enrollment		1,307	575	732

3. Resident Student Population Forecasts

The student population is forecasted out ten years for each of the study areas, attendance areas, and for the entire Orting School District. The district-wide summary enables the district to see a broad overview of future population shifts and what effect these shifts may have on existing and future facilities. Each attendance area is summarized to give a local view of population changes and identify variances within the district.

Together, these forecast summaries present the means for identifying the timing of future population shifts and overall facility adjustments needed to accommodate these shifts. Study areas and their forecasted resident students can be shifted between schools to assist in balancing enrollment through boundary changes, grade-level reassignments, or other means identified to better utilize school facilities. Forecasts provided in this report are based on students who live in the district School Year 2024.

Forecast Trends

The building blocks of the forecasts are the individual study areas. There are currently a total of 70 study areas in the Orting School District. The attendance areas and district summary are simply the compilation of all the study areas. For each study area, the student counts are forecasted over ten years (Current: SY2024/25; Forecasted: SY2025/26 through SY2034/35).

The forecast trends in Table 6 indicate a significant increase in resident student population within the Orting School District over the next decade. The resident student population is projected to rise from 2,765 in 2024 to 6,075 by 2034, nearly doubling in size. This growth is driven primarily by new residential developments and increasing student yield from housing. The resident elementary school population (PK-5) is expected to increase from 1,230 students in 2024 to over 2,426 by 2034, reflecting a steady rise in younger student enrollment. Middle school (6-8) and high school (9-12) resident populations are also forecasted to grow significantly, reaching 1,612 and 2,036 students, respectively, by 2034. The largest annual increases are projected in the late 2020s and early 2030s, particularly in kindergarten through middle school grades, as residential developments continue to expand.

This rapid student population growth will likely require significant adjustments in school capacity and district planning. The study identifies potential challenges related to overcrowding, facility needs, and possible boundary changes. The increasing demand in elementary and middle school grades suggests the need for new school construction or expansions to accommodate the rising student numbers. Additionally, high school enrollment is forecasted to surpass 2,000 students by 2034, indicating the potential need for additional facilities or adjustments in grade configurations. The district will need to monitor mobility patterns, housing developments, and birth rate trends closely to ensure that educational infrastructure keeps pace with student population growth.

3. RESIDENT STUDENT POPULATION FORECASTS

Table 6: District Forecast Summary

Forecast based on student data processed 10/1/2024.

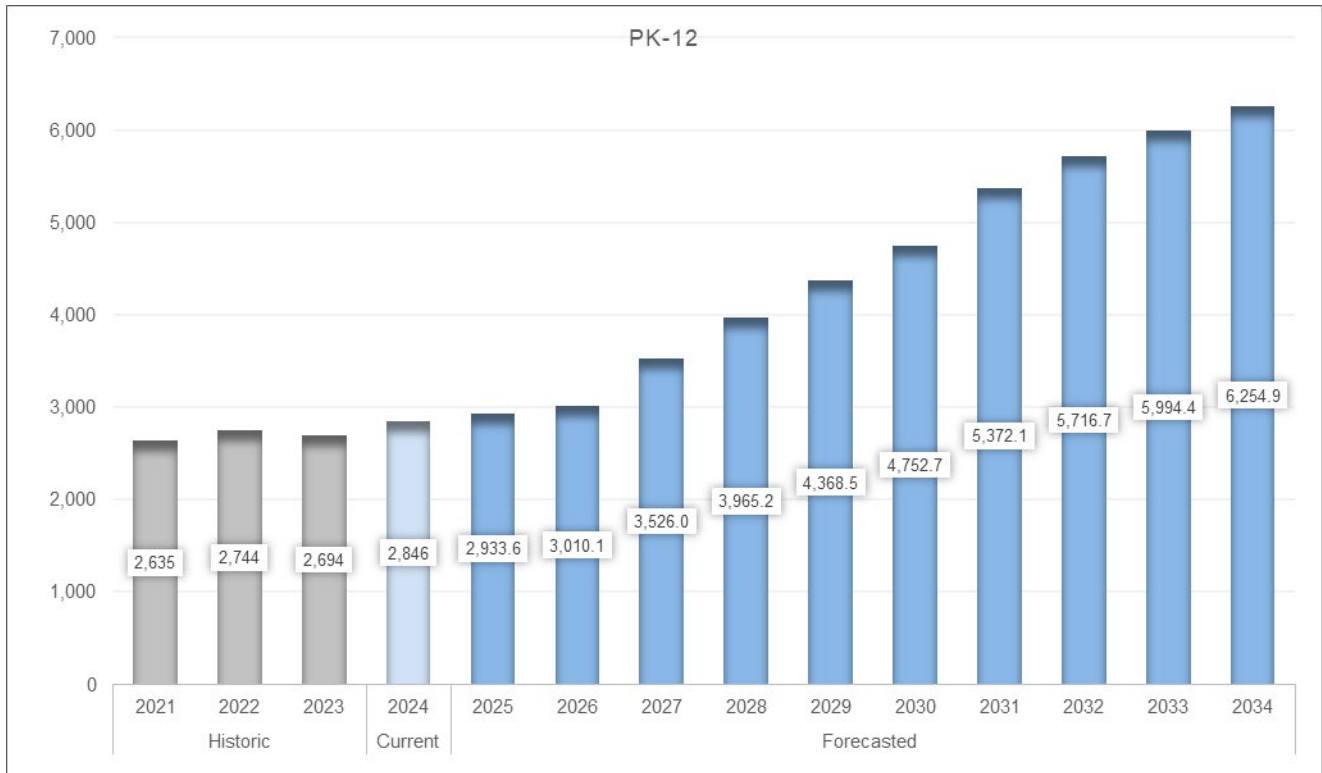
Resident Students														
Grade	Historic			Current	Forecasted									
	2021	2022	2023	2024	2025	2026	2027	2028	2029	2030	2031	2032	2033	2034
PK/TK	0	0	59	46	46.2	46.5	46.7	46.9	47.1	47.4	47.6	47.8	48.1	48.3
K	193	194	186	178	175.2	188.6	249.1	236.2	256.4	272.0	307.2	315.3	326.6	343.5
1	165	216	189	199	192.2	187.7	234.4	291.5	274.0	293.5	329.1	346.4	349.4	364.2
2	191	186	224	194	214.5	206.2	235.9	280.1	335.6	316.3	357.8	376.5	389.5	395.7
3	170	206	184	232	203.6	222.6	246.3	271.0	311.1	365.5	365.0	388.1	401.7	417.8
4	172	179	218	197	244.2	213.7	265.9	285.2	306.2	345.9	421.0	402.0	420.3	437.5
5	184	199	184	230	215.8	263.7	265.1	314.4	330.2	350.6	411.8	471.1	445.6	468.0
6	201	196	199	214	251.9	235.0	319.9	316.6	364.5	380.4	423.0	468.9	526.5	503.0
7	204	209	187	210	223.0	258.1	286.9	363.7	354.7	400.4	443.7	460.1	498.2	559.8
8	232	214	202	214	227.7	238.8	321.5	343.5	416.1	404.9	479.1	496.4	505.6	549.2
9	224	237	211	227	230.9	243.1	271.7	354.9	375.6	450.5	447.5	514.2	527.8	538.6
10	220	220	211	217	219.0	221.0	248.9	273.6	351.0	369.9	450.5	439.8	501.0	516.2
11	186	221	202	226	219.7	221.0	238.1	264.5	286.9	363.5	392.7	463.9	450.9	514.4
12	208	186	203	227	232.5	225.2	242.7	257.8	282.2	303.8	390.5	410.6	479.4	467.7
Resident Student Totals by Grade Configuration														
PK-5	1,075	1,180	1,185	1,230	1,245.5	1,282.5	1,496.7	1,678.4	1,813.5	1,943.8	2,191.9	2,299.4	2,333.1	2,426.7
6-8	637	619	588	638	702.6	731.9	928.3	1,023.8	1,135.3	1,185.7	1,345.8	1,425.4	1,530.3	1,612.0
9-12	838	864	827	897	902.1	910.3	1,001.4	1,150.8	1,295.7	1,487.7	1,681.2	1,828.5	1,959.1	2,036.9
PK-12	2,550	2,663	2,600	2,765	2,850.2	2,924.7	3,426.4	3,853.0	4,244.5	4,617.2	5,218.9	5,553.3	5,822.5	6,075.6
Students Not Included in the Forecast														
PK-5	27	34	35	31	31.4	32.3	37.7	42.3	45.7	49.0	55.2	58.0	58.8	61.2
6-8	24	17	19	18	19.8	20.6	26.2	28.9	32.0	33.5	38.0	40.2	43.2	45.5
9-12	34	30	40	32	32.2	32.5	35.7	41.1	46.2	53.1	60.0	65.2	69.9	72.7
PK-12	85	81	94	81	83.4	85.4	99.6	112.2	124.0	135.5	153.2	163.4	171.9	179.3
Total Students														
PK-5	1,102	1,214	1,220	1,261	1,276.9	1,314.8	1,534.4	1,720.7	1,859.2	1,992.8	2,247.1	2,357.4	2,391.9	2,487.9
6-8	661	636	607	656	722.4	752.5	954.5	1,052.7	1,167.3	1,219.2	1,383.8	1,465.6	1,573.5	1,657.5
9-12	872	894	867	929	934.3	942.8	1,037.1	1,191.9	1,341.9	1,540.8	1,741.2	1,893.7	2,029.0	2,109.6
PK-12	2,635	2,744	2,694	2,846	2,933.6	3,010.1	3,526.0	3,965.2	4,368.5	4,752.7	5,372.1	5,716.7	5,994.4	6,254.9
Annual Net Change														
PK-5	112	6	41	15.9	37.9	219.6	186.3	138.5	133.6	254.4	110.2	34.5	96.0	
6-8	-25	-29	49	66.4	30.1	201.9	98.2	114.6	51.8	164.6	81.8	107.9	84.0	
9-12	22	-27	62	5.3	8.5	94.3	154.7	150.1	198.8	200.4	152.6	135.3	80.6	
PK-12	109	-50	152	87.6	76.6	515.9	439.2	403.2	384.3	619.4	344.6	277.7	260.5	
Notes														

Forecast based on student data as of 10/02/2024
 Resident students refer to students who reside within the district boundary. Students not included in the forecast: Non-Resident Students (81). A rate-of-change trend line was used to estimate anticipated students not included in the forecast.



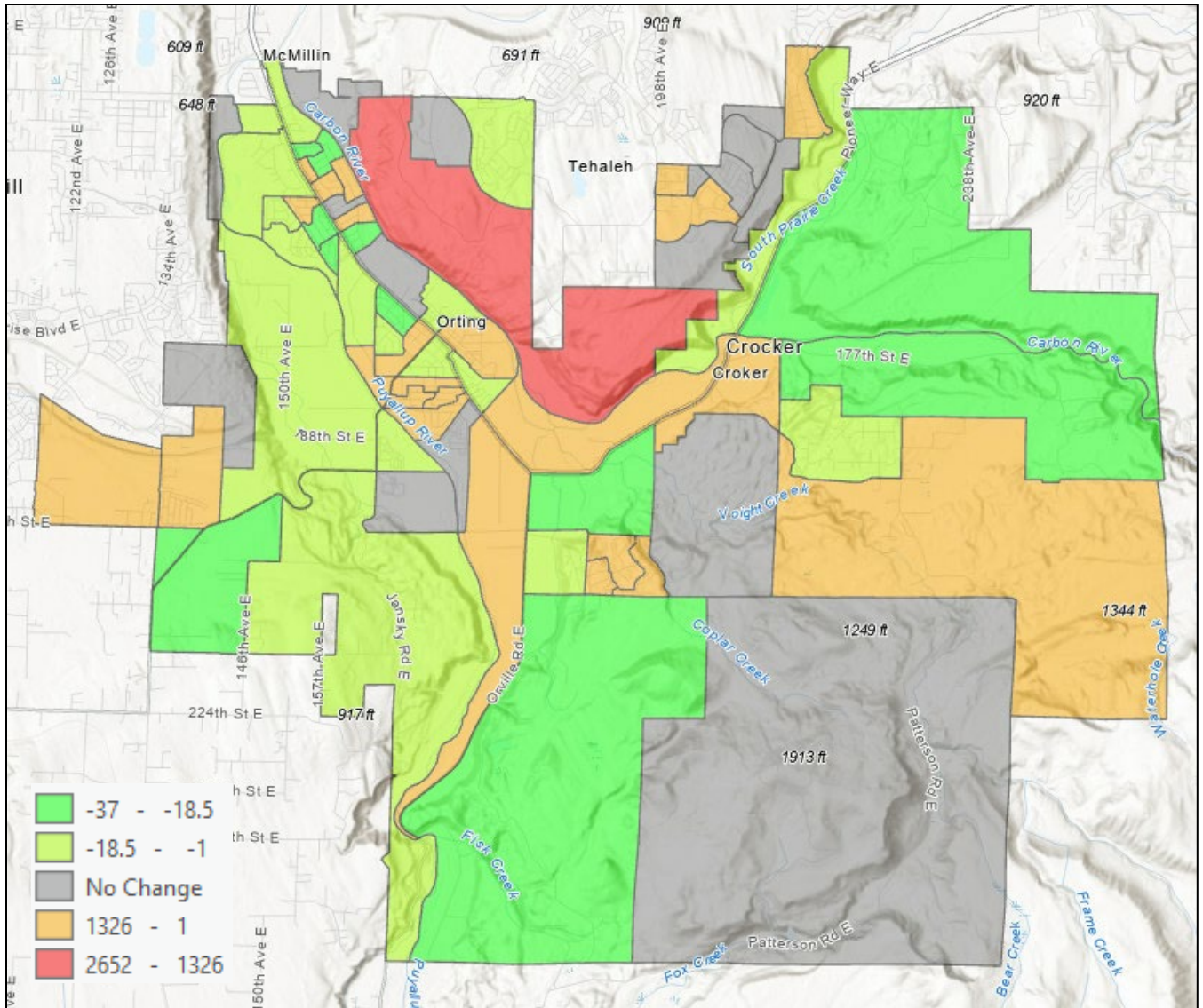
3. RESIDENT STUDENT POPULATION FORECASTS

CHART 3: CURRENT AND FORECASTED TRENDS SY2024-SY2034



Map 3: Forecasted 10-Year Change in Resident Students

Red/orange areas indicate forecasted student growth, and the green areas represent areas in decline. The gray zones represent “No Change” and frequently have little to no population. Data is based on School Year 2024 resident students and their existing zones. This map does not reflect any rezoning or changes since fall student report to state department of education



4. Attendance Area Forecasts

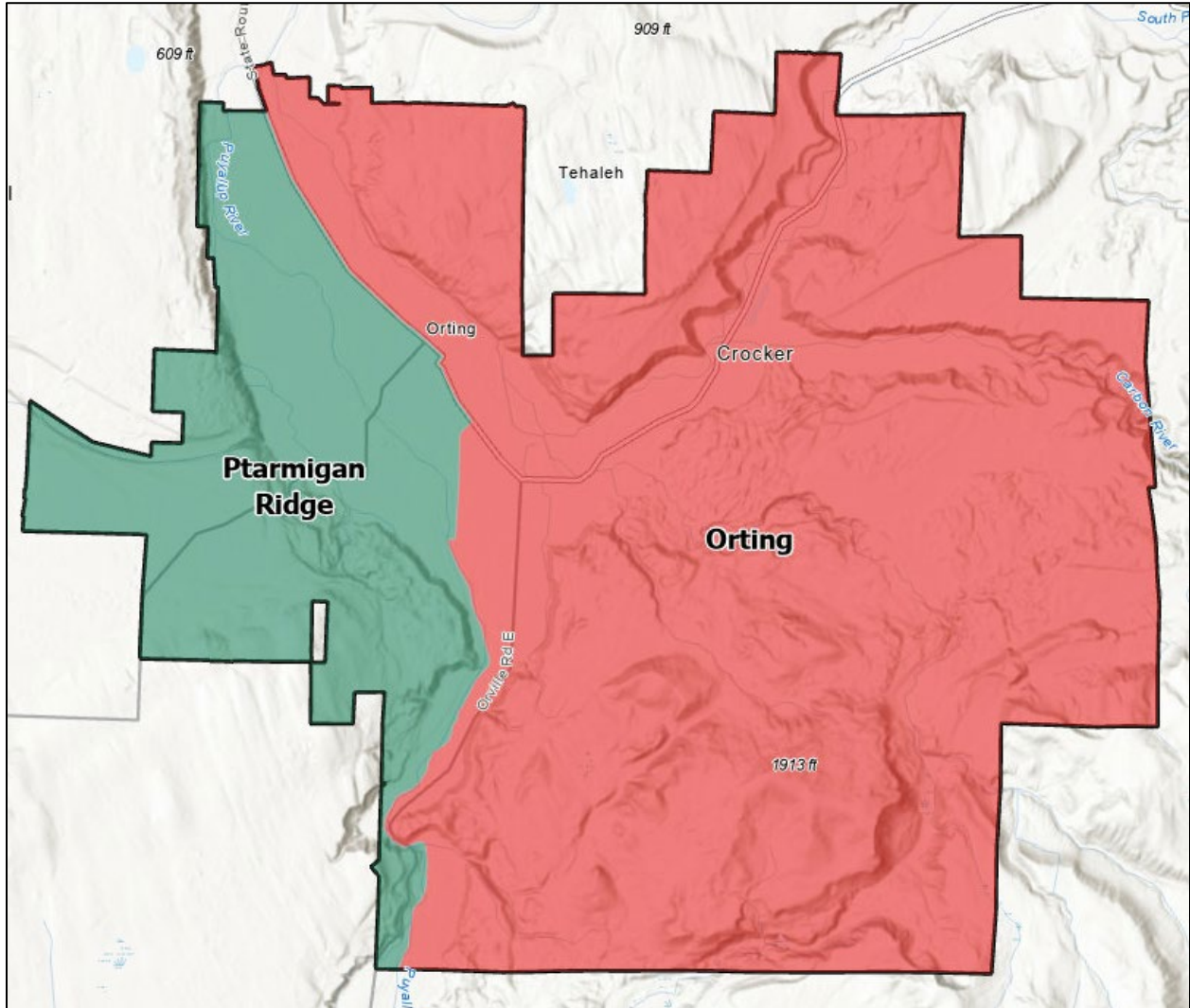
Trend Summaries by Elementary

Elementary Attendance Area (PK-5) Student Population Forecast Trends

Orting Elementary School is projected to experience significant resident student growth over the next decade, with enrollment increasing from 652 students in 2024 to approximately 1,655 by 2034. The largest increases are expected in the mid-to-late 2020s, particularly in kindergarten and early elementary grades, driven by new residential developments and higher student yield factors. Annual growth rates vary, with the most rapid increases occurring between 2026 and 2031. The report highlights the need for capacity planning, potential facility expansions, or attendance boundary adjustments to manage this anticipated growth. If trends continue, Orting ES may face challenges with overcrowding, requiring proactive measures to maintain an optimal learning environment.

Ptarmigan Ridge Elementary School is also projected to see steady resident student growth, with enrollment increasing from 624 students in 2024 to approximately 820 by 2034. While the growth rate is slightly lower than Orting ES, the school will still experience consistent increases in enrollment, particularly in the early elementary grades. The largest growth is expected between 2026 and 2031, fueled by new residential developments and student mobility patterns. With this steady rise in student numbers, Ptarmigan Ridge ES may also require capacity planning, facility expansions, or boundary adjustments to accommodate the increasing demand. Managing space and resources effectively will be essential to maintaining a high-quality learning environment.

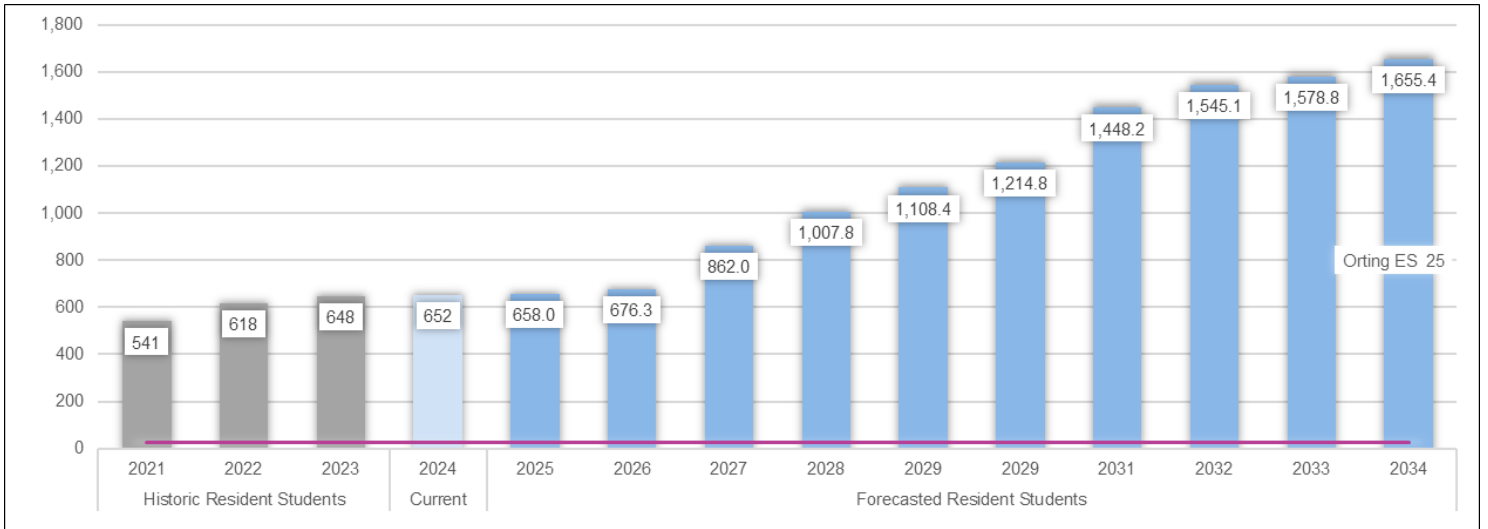
Map 4: Elementary Attendance areas



4. ATTENDANCE AREA FORECASTS

Orting ES														
Grade	Historic Resident Students			Current	Forecasted Resident Students									
	2021	2022	2023	2024	2025	2026	2027	2028	2029	2029	2031	2032	2033	2034
PK	0	0	36	26	26.1	26.3	26.4	26.5	26.6	26.8	26.9	27.0	27.2	27.3
K	94	106	91	92	89.5	95.3	137.9	134.0	145.3	158.5	191.8	197.0	205.1	218.8
1	78	108	98	97	98.2	94.3	129.9	168.0	158.4	172.2	207.5	222.9	222.4	233.9
2	98	94	118	100	109.4	109.3	136.3	169.0	204.7	196.6	234.5	252.9	263.5	266.4
3	88	111	91	117	103.3	111.4	140.1	161.5	188.9	226.6	239.5	259.1	271.8	285.6
4	95	91	119	100	124.0	108.6	146.5	170.2	186.8	217.1	277.6	271.9	286.3	302.7
5	88	108	95	120	107.5	131.1	144.9	178.6	197.7	217.0	270.4	314.3	302.5	320.7
Total Pk-5	541	618	648	652	658.0	676.3	862.0	1,007.8	1,108.4	1,214.8	1,448.2	1,545.1	1,578.8	1,655.4

Annual Change	2021 to 2022	2022 to 2023	2023 to 2024	2024 to 2025	2025 to 2026	2026 to 2027	2027 to 2028	2028 to 2029	2029 to 2030	2030 to 2031	2031 to 2032	2032 to 2033	2033 to 2034	
		77.0	30.0	4.0	6.0	18.3	185.7	145.8	100.6	106.4	233.4	96.9	33.7	76.6
		14.2%	4.9%	0.6%	0.9%	2.8%	27.5%	16.9%	10.0%	9.6%	19.2%	6.7%	2.2%	4.9%



4. ATTENDANCE AREA FORECASTS

Ptarmigan Ridge ES														
Grade	Historic Resident Students			Current	Forecasted Resident Students									
	2021	2022	2023	2024	2025	2026	2027	2028	2029	2029	2031	2032	2033	2034
PK	0	0	23	20	20.1	20.2	20.3	20.4	20.5	20.6	20.7	20.8	20.9	21.0
K	99	88	95	86	85.7	93.2	111.1	102.2	111.1	113.5	115.4	118.3	121.6	124.7
1	87	108	91	102	94.0	93.4	104.5	123.5	115.6	121.2	121.6	123.6	127.0	130.3
2	93	92	106	94	105.1	96.9	99.6	111.0	130.9	119.8	123.3	123.6	125.9	129.3
3	82	95	93	115	100.2	111.1	106.2	109.5	122.3	138.9	125.5	129.1	129.8	132.2
4	77	88	99	97	120.2	105.2	119.4	115.0	119.5	128.9	143.4	130.1	134.0	134.8
5	96	91	89	110	108.4	132.7	120.2	135.8	132.5	133.6	141.4	156.8	143.1	147.3
Total PK-5	534	562	596	624	633.7	652.7	681.3	717.4	752.4	776.5	791.3	802.3	802.3	819.6

Annual Change	2021 to 2022	2022 to 2023	2023 to 2024	2024 to 2025	2025 to 2026	2026 to 2027	2027 to 2028	2028 to 2029	2029 to 2030	2030 to 2031	2031 to 2032	2032 to 2033	2033 to 2034
		28.0	34.0	28.0	9.7	19.0	28.6	36.1	35.0	24.1	14.8	11.0	0.0
	5.2%	6.0%	4.7%	1.6%	3.0%	4.4%	5.3%	4.9%	3.2%	1.9%	1.4%	0.0%	2.2%

