



# Expanding Access to a World-Class System

*Applied & Experiential Learning, including  
Career Technical Education (CTE) in  
Washtenaw County*

Ryan L. Rowe, PhD  
Director of CTE



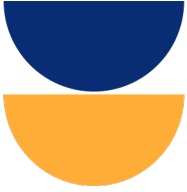


# Providing A World-Class Education

Washtenaw County is committed to providing a world-class education for all students. This may include a robust system of applied and experiential learning, including:

- Career Technical Education (CTE)
- Advanced Placement (AP)
- International Baccalaureate (IB)
- Dual Enrollment
- FIRST Robotics
- Project Lead the Way (PLTW), and more.





# How We Get There

## ***Shifting Mindsets***

Blending continuous improvement and continuous innovation

## ***Launching New Programs***

Creating a seamless career development continuum that connects students to opportunities.

## ***Engaging the Community***

Building the case by creating a shared vision

## ***Co-Creating a Data-Driven Future***

Ensuring our decisions are guided by data and best practices



## ***Constructing World-Class***

Collaborating with businesses and post-secondary institutions to create a world-class system



# The System As It Is (Was)

- **Decentralized** with a majority of programs in local high schools.
- **Inefficient** and **complicated** transportation system.
- Teachers work for local schools or training partners.
- Enrollment **below demand**.
- **Lacking** a countywide system of career awareness and exploration.
- Programming funded through **general funds**.



## But...

Serving a community with energy, commitment, and resources to redefine Applied & Experiential Learning, including CTE, in Washtenaw County





# Building the System



## **Schools**

Provide core academic knowledge



## **Businesses**

Offer real-world experiences, mentorship, and job opportunities



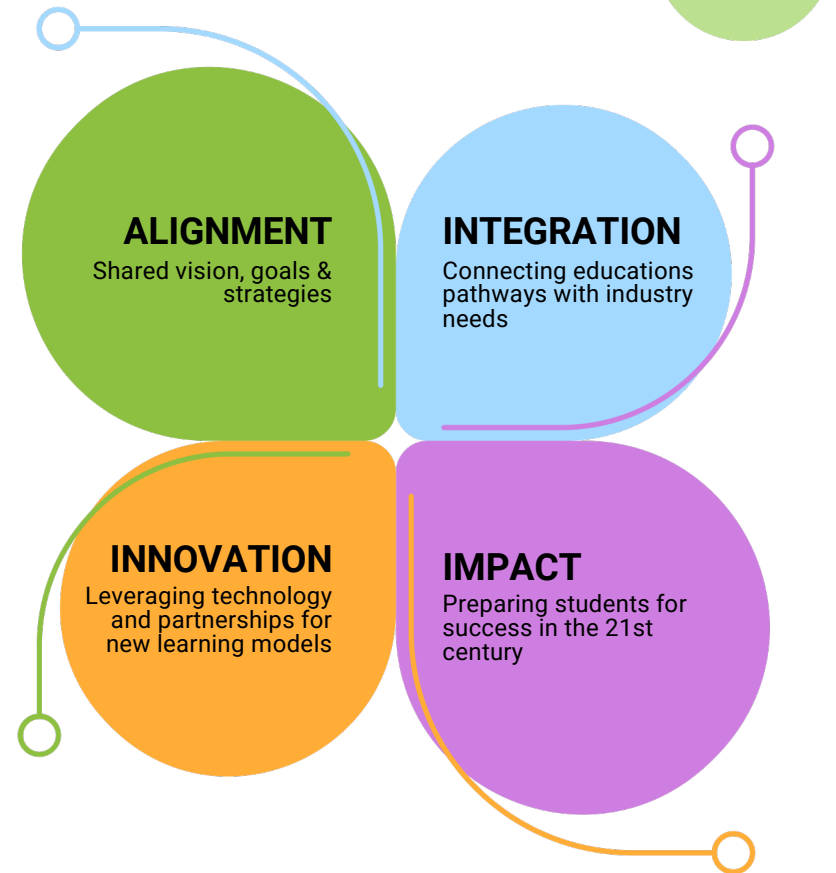
## **Post-Secondary Institutions**

Provide advanced training and educational opportunities



## **Community Organizations**

Support student success through wraparound services and resources





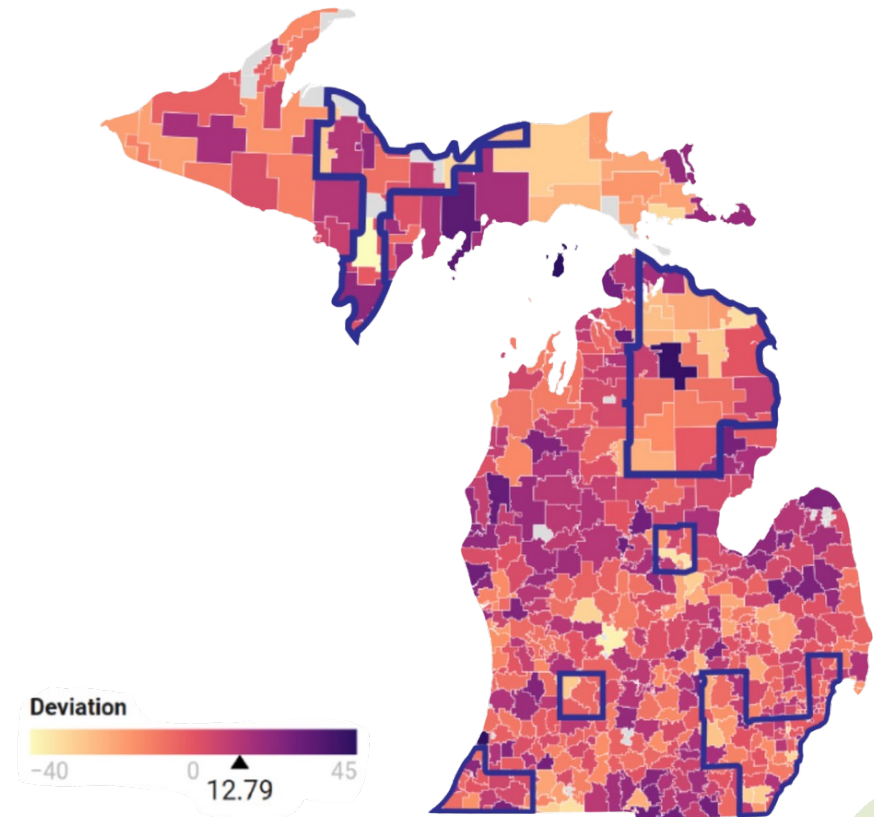
# Area of Concern

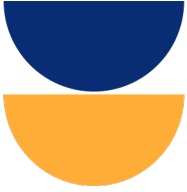
## ***CTE Deserts***

Michigan school districts identified as CTE deserts are areas where CTE participation is much lower than would be expected given the characteristics of the students and schools.

## ***Opportunity Gaps***

Observable disparity in CTE access or participation based on demographic characteristics such as race/ethnicity, gender, or socioeconomic status, resulting in the underrepresentation of some students.





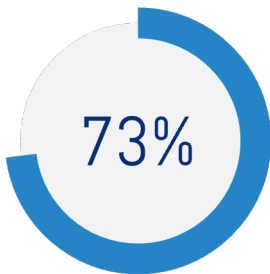
# Vocational Millage Funding

## Gray

Intermediate School District (ISD), Regional Educational Service Agency (RESA), or Education Service District (ESD) with a millage

## Red

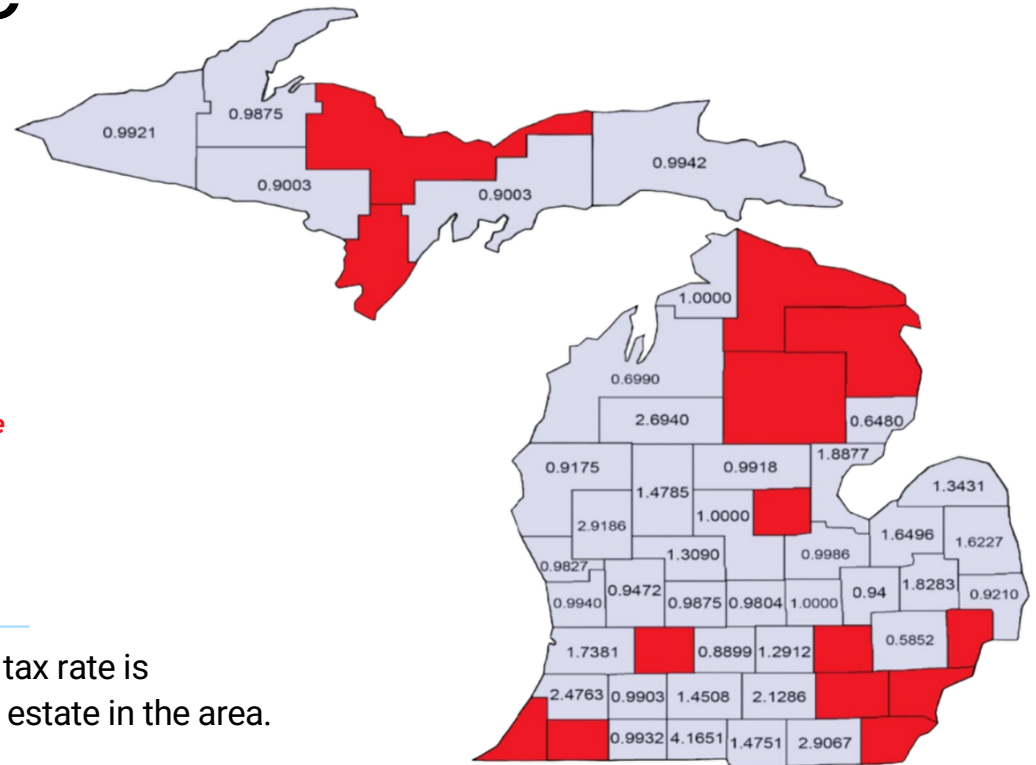
Intermediate School District (ISD), Regional Educational Service Agency (RESA), or Education Service District (ESD) **without a millage**



## 41 ISDs

have a vocational millage

Total funds vary because the tax rate is levied on the value of the real estate in the area.





# Sustaining and Expanding Opportunities

**\$100,000**

**\$100/YR**

**\$20M**

**Taxable Home Value**

**Vocational Millage**

**Dedicated CTE Funding**

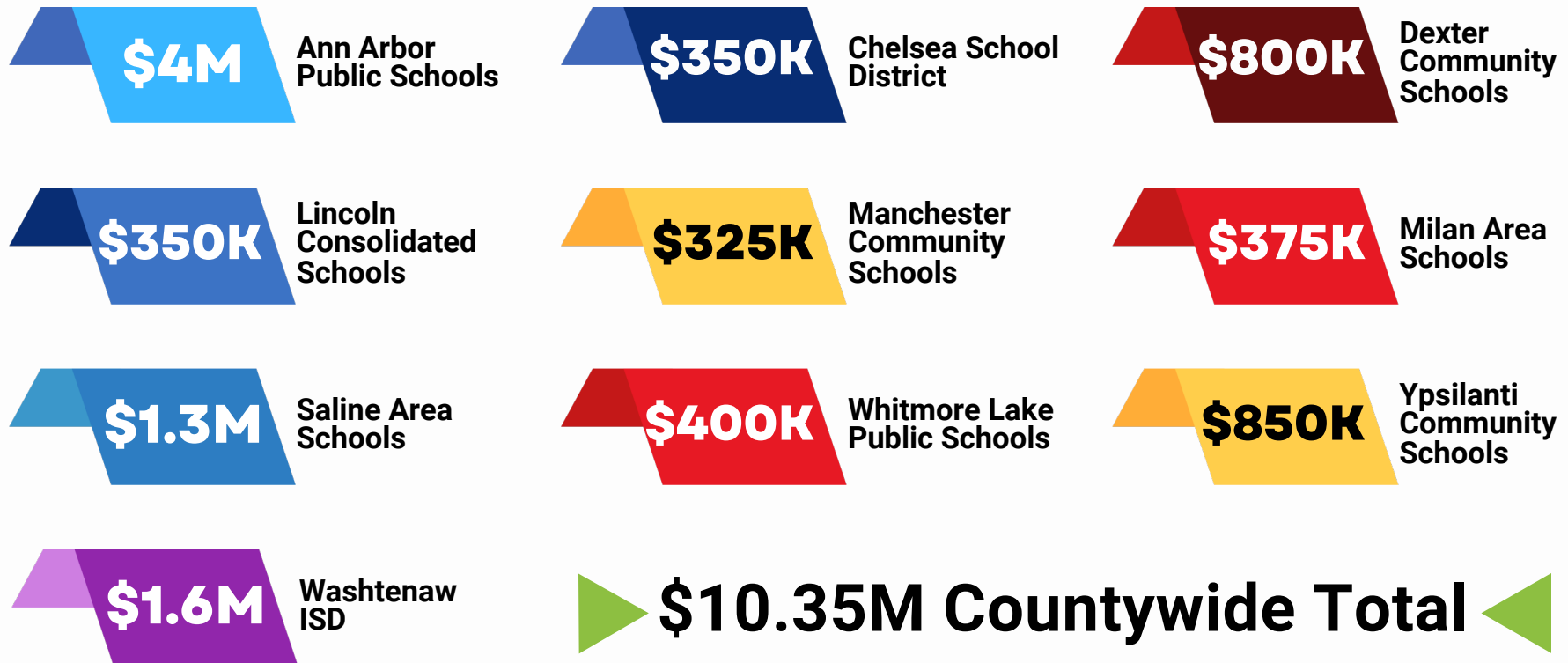


How much a 1.0 mil vocational millage would cost per \$100,000 taxable home value.

Local school districts would currently save approximately \$10 million per year in general funds, while further expanding access to meet student demand.



# Current General Fund Allocations for CTE in Washtenaw County



# 15 ISDs with No Vocational Millage



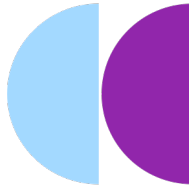
1. Alpena-Montmorency-Alcona ESD
2. Barry ISD
3. Berrien RESA
4. Crawford, Oscida, Ogemaw, and Roscommon (C.O.O.R.) ISD
5. Cheb-Otsego-Presque Isle ESD
6. Heritage Southwest Intermediate School District
7. Livingston ESA
8. Macomb ISD
9. Manistee ISD
10. Marquette-Alger RESA
11. Menominee ISD
12. Midland County Educational Service Agency
13. Monroe ISD
- 14. Washtenaw ISD**
15. Wayne RESA

In addition, some school districts in counties with a millage are not receiving these funds:

1. Lansing School District
2. Lake Odessa School District
3. Greenville Public Schools
4. Tri County Area Schools

**Lack of a vocational  
millage can cause  
inequities in  
CTE programs.**

# Vocational Millage Uses



**CTE readiness  
activities**

**Maintenance, repair,  
and replacement of  
physical building(s)  
equipment and  
supplies for  
CTE staff**

**Salaries and  
benefits for CTE  
staff**

**Curriculum and  
assessment costs**

**Freeing up  
general fund  
dollars**

**Transportation  
costs**

**Instructional  
programs at an  
area center  
and/or satellite  
sites**

**Instructional costs for  
CTE programs  
targeted toward high-  
demand occupations  
& integration of  
academics to meet  
the MMC**



## Not All Funding is Equal

**State School Aid  
+ Perkins V  
= \$679 per CTE Student**

**\$202**  
per CTE  
student

**Carl D. Perkins Federal  
Funding (aka Perkins V)**



### **State School Aid Funds**

**\$355**  
per CTE  
student

61a(1): Partial  
reimbursement

**\$35-70**  
per CTE  
student

61d(1): Based  
on career field

#### **Plus:**

- 61a(2): Admin. reimbursement
- 61c: Equipment grants (no longer funded)

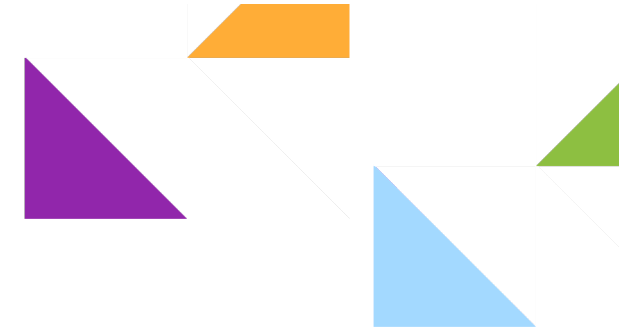
### **Local Funding**

Local options include vocational millages, foundations, post-secondary partnerships, and funding from business/industry.





# Imagine the Possibilities



***Decrease CTE deserts  
& opportunity gaps***



***Increase students  
exploring career paths  
that interest them***



***Increase students  
graduating from high  
school...with a purpose***



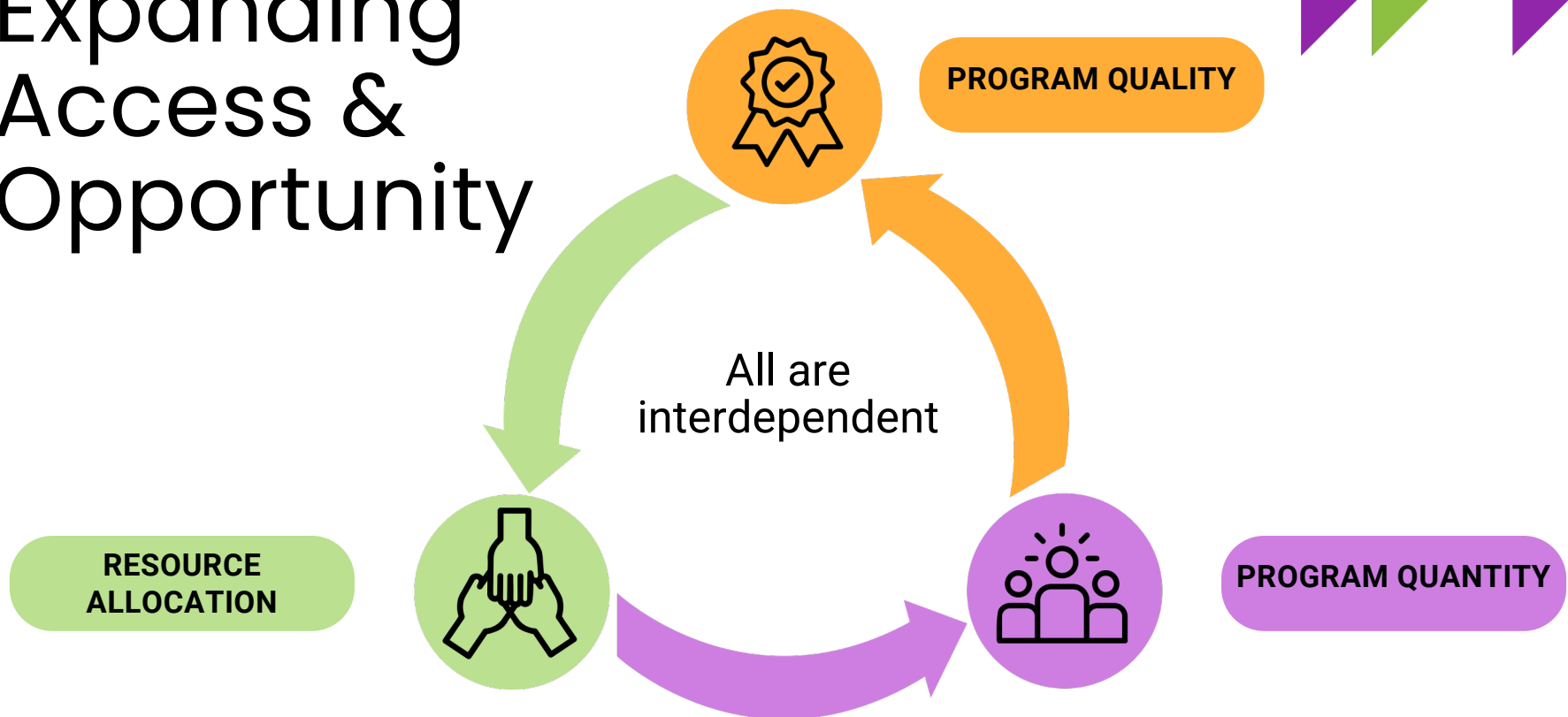
***Increase students earning  
an industry-recognized  
credential***



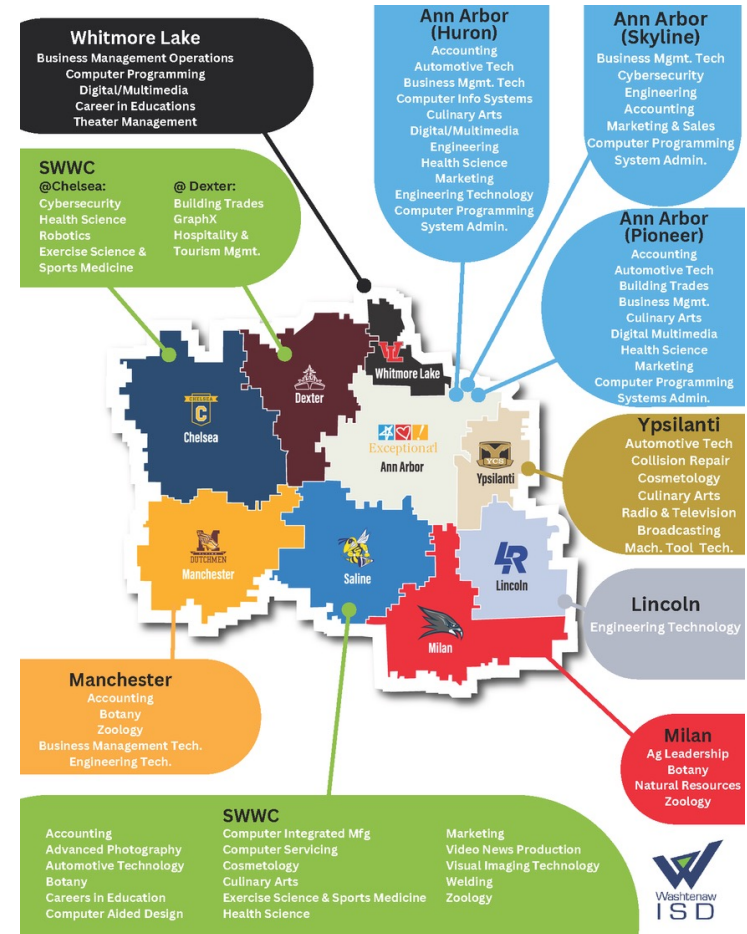
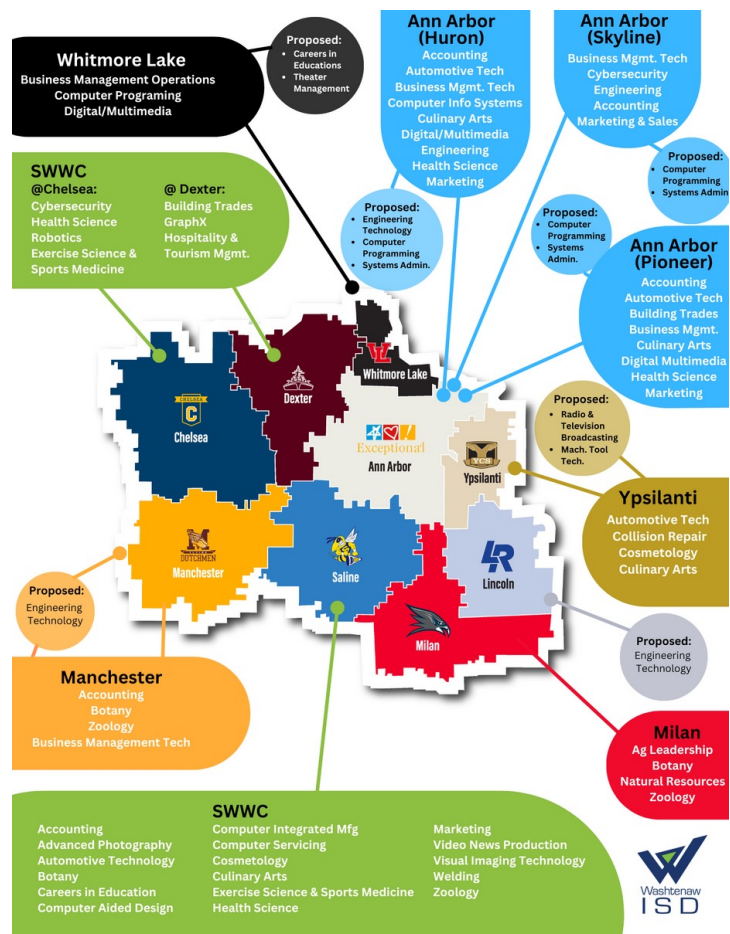
***Increase student  
engagement at an  
earlier age***



# Expanding Access & Opportunity



# Reimagine the Future





# Recent Additions

2020-2021

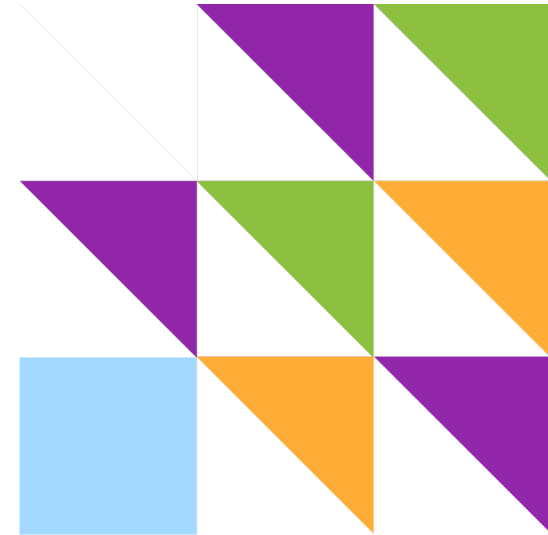
**Engineering Technology/Robotics** - SWWC (Chelsea)

2022-2023

**Computer and Information Systems/Cybersecurity/Information Assurance** - SWWC (Chelsea)

**Hospitality and Tourism Management** - SWWC (Chelsea)

**Exercise and Sports Medicine** - SWWC (Saline and Chelsea)

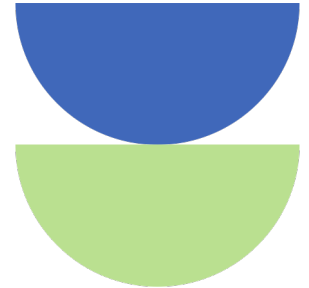


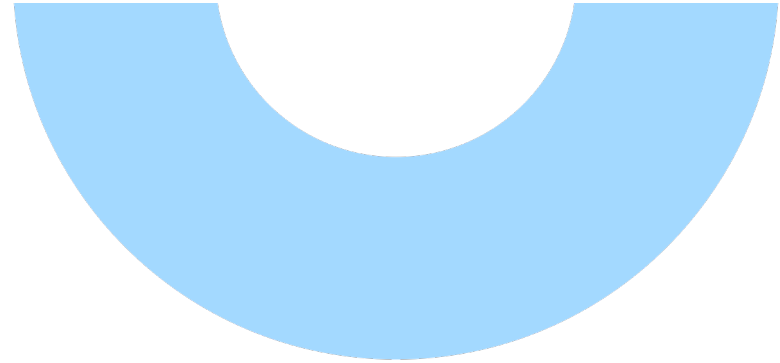
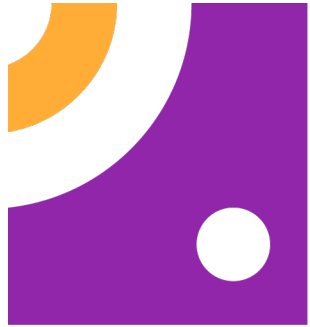


# Recent Additions

2023-2024

**Computer Programming** - Ann Arbor (Pioneer)  
**Computer Programming** - Ann Arbor (Skyline)  
**Computer Programming** - Ann Arbor (Huron)  
**Computer Systems Administration** - Ann Arbor (Pioneer)  
**Computer Systems Administration** - Ann Arbor (Skyline)  
**Computer Systems Administration** - Ann Arbor (Huron)  
**Digital/Multimedia and Information Resources** - Ann Arbor (Skyline)  
**Engineering Technology** - Ann Arbor (Huron)  
**Engineering Technology** - Lincoln  
**Engineering Technology** - Manchester  
**Careers in Education** - Whitmore Lake  
**Theater Management & Operations** - Whitmore Lake  
**Engineering/Machining** - Ypsilanti  
**TV & Radio Broadcasting** - Ypsilanti





# Recent Additions

2024-2025

**Construction Trades** - Milan

**Computer Programming** - Ann Arbor (Community)

**Computer and Information Systems/Cybersecurity/Information Assurance** - Ann Arbor (Community)

**Engineering Technology** - Ann Arbor (Pioneer)

**Hospitality & Tourism Management** - Ann Arbor (Huron)

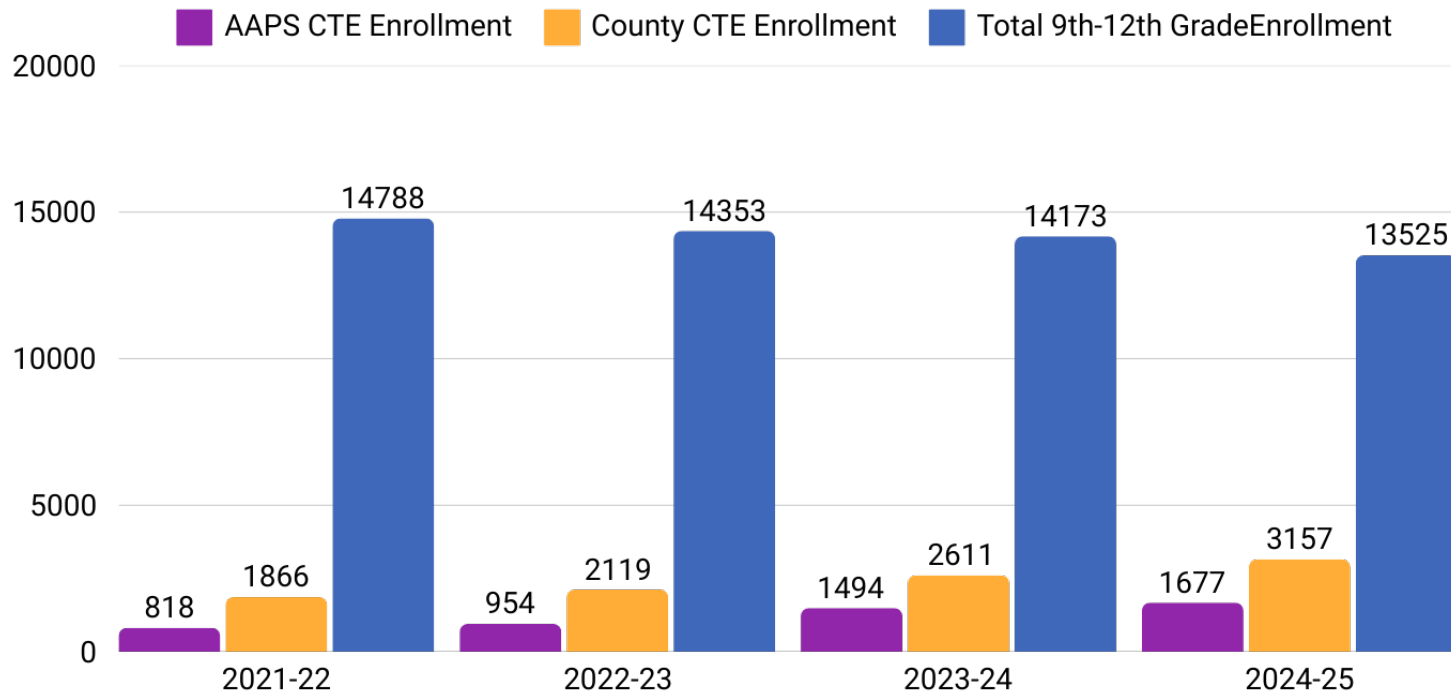
**Aviation/Aerospace** - Lincoln

**Aviation/Aerospace** - Ypsilanti



# Total CTE Enrollment in WISD's Service Area

9th-12th grade students



# Washtenaw ISD CTE Funding

## Section 61c: CTE Equipment Grant

**\$535K**

2021-22

**\$576K**

2022-23

**\$1.153M**

2023-24

**\$0**

2024-25



## Section 11x(6): School Consolidation & Infrastructure Fund

- **\$250,000** to support a feasibility study toward consolidation of services

## Section 12c: Consolidation of Services

- **\$5M** to implement services and supports based on the findings of the feasibility study





# Increased Attention from MDE



Department of Education

## More Funding Needed for Career Tech Programs, State Board of Education Says

January 15, 2025

### ***Despite Increased Enrollment, Opportunity Lacking for Some Students***

LANSING – Michigan needs to invest further in career and technical education (CTE) programs so that more children have opportunities to prepare for high-wage and high-skills careers, State Board of Education members said in a [resolution](#) approved on Tuesday.

The resolution calls for the legislature and Gov. Gretchen Whitmer to provide additional funding to local and intermediate school districts to open new high-quality career and technical education programs—particularly those in CTE deserts where participation in the programs is much lower than expected and in areas with opportunity gaps—to ensure equitable access across all schools.





# Big Picture Alignment

Office of Career and Technical Education (MDE-OCTE) is in alignment with the goals of the Michigan's Top 10 Strategic Education Plan.

- Improve the health, safety, and wellness of all learners.
- Expand secondary learning opportunities for all students.
- Increase the percentage of all students who graduate from high school.
- Increase the percentage of adults with postsecondary credential.
- Provide adequate and equitable school funding.



# A History of Unequal Access

University of Michigan Youth Policy Lab Local and State Research Reports

## April 2019

- Lack of widespread familiarity of CTE overall.
- WISD CTE courses align with emerging occupations.
- Desire to expand programming.

## December 2021

- Demand for CTE is equal across *all* districts.
- Students participate at high levels when access is easy.
- Off-campus/neutral sites test possibilities.

## January 2020

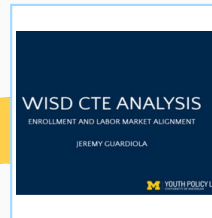
- ~50% of all MI students enroll in CTE courses.
- Female, Black, and economically disadvantaged students less likely to participate.
- 500,000+ skilled trade careers will be available thru 2026.

## December 2022

- Low income, Black, and hispanic students have less overall access to CTE and are less likely to attend schools with at least one CTE program.
- Access is greater for all in districts with CTE millages, and they reduce gaps in access.
- CTE participation and completion rates are significantly higher in schools with on-site CTE programs.

## July 2024

- All Washtenaw students less access on average when compared to the state.
- Low income, Black, and hispanic students have less access to CTE compared to their more affluent and white peers.
- Access is dependent on which district and building a student attends.
- There are many opportunities in front of us that can increase access for students, including exploring other funding models.



# Money Matters



Dollars are finite and CTE is costly, but the return on investment (ROI) is excellent!

*For every \$1 invested in secondary and postsecondary CTE, approximately \$5 is returned to the state economy.*

## CTE Students Earned:

» **7,442** Postsecondary Credentials

» **468** Postsecondary Awards

» **27,841** Supplemental Credentials



# The 1-2-7 Rule

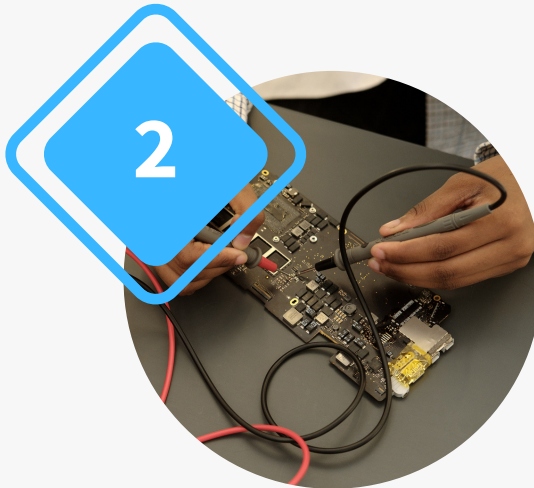


1



**Requires a  
master's  
degree or more**

2



**Require a  
bachelor's  
degree**

7



**Require an  
associate's  
degree, certificate  
or credential**



# CTE Positions, Pathway, and Research, Communication & Marketing



## Increased Capacity

Offer support and service through:

- Career Technical Education (CTE) Coordinator
- Work Based Learning (WBL) Coordinator
- Special Populations Coordinator
- Data & Reporting Specialist
- CTE Grant Management Coordinator

## Countywide Pathways

Add three (3) new countywide programs, in addition to 71 exiting CTE programs:

- Aviation/Aerospace
- Engineering/Construction Trades
- Business, Entrepreneurship, Sports & Tourism (BEST) Leadership Program

## Research, Communication & Marketing

Develop communication, marketing, and branding strategy:

- Hanover Research: Survey and Focus Groups
- Forthright Advising: Report to the Community
- Rhodes: Branding and Marketing

# CTE Design Process







# The Future Moves with Us

Let's build it together.



**Ryan L. Rowe, PhD**

Director of CTE



(734) 994-8100 x1575



[rrowe@washisd.net](mailto:rrowe@washisd.net)

