

**Area A – Anthony, 5757 Irving Avenue South, Minneapolis**

**Square Yards = 9,500**

*Anthony is next to Kenny.*



Red or Yellow outline indicates areas to be plowed. The blue highlighted/X areas indicate where the snow should be piled.

**Area A – Armatage, 2501 West 56th Street, Minneapolis**

**Square Yards = 2,821**

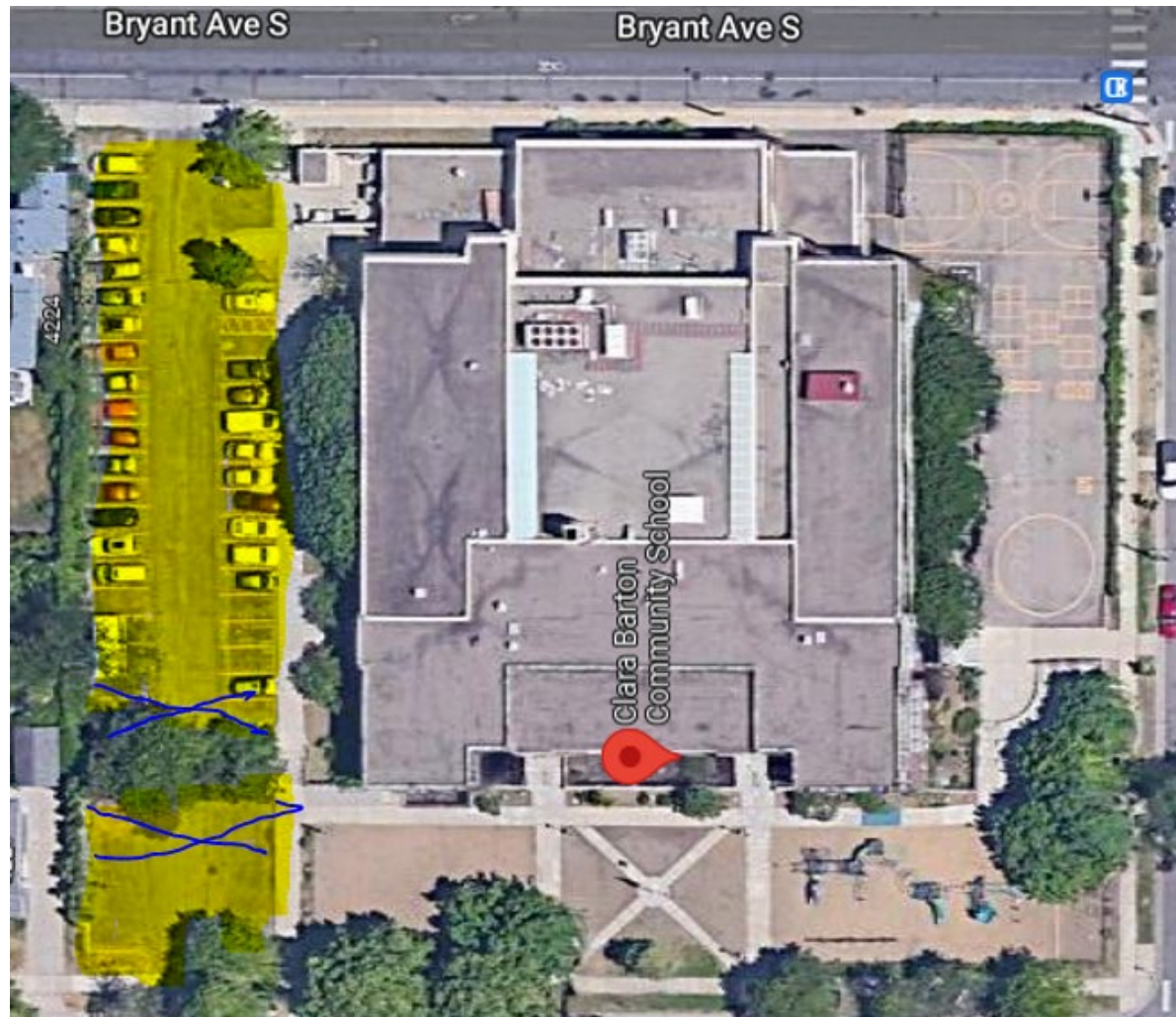


Red or Yellow outline indicates areas to be plowed. The blue highlighted/X areas indicate where the snow should be piled.



Area A – Barton, 4237 Colfax Avenue S., Minneapolis

Square Yards = 1,503



Red or Yellow outline indicates areas to be plowed. The blue highlighted/X areas indicate where the snow should be piled.

**Area A – Burroughs, 1601 West 50th Street, Minneapolis**

**Square Yards = 2,998**



Red or Yellow outline indicates areas to be plowed. The blue highlighted/X areas indicate where the snow should be piled.



**Area A – Field, 4645 Fourth Avenue South, Minneapolis**

**Square Yards = 1,670**



Red or Yellow outline indicates areas to be plowed. The blue highlighted/X areas indicate where the snow should be piled.

Area A - Green Central, 3416 Fourth Avenue South, Minneapolis

Square Yards = 4,582

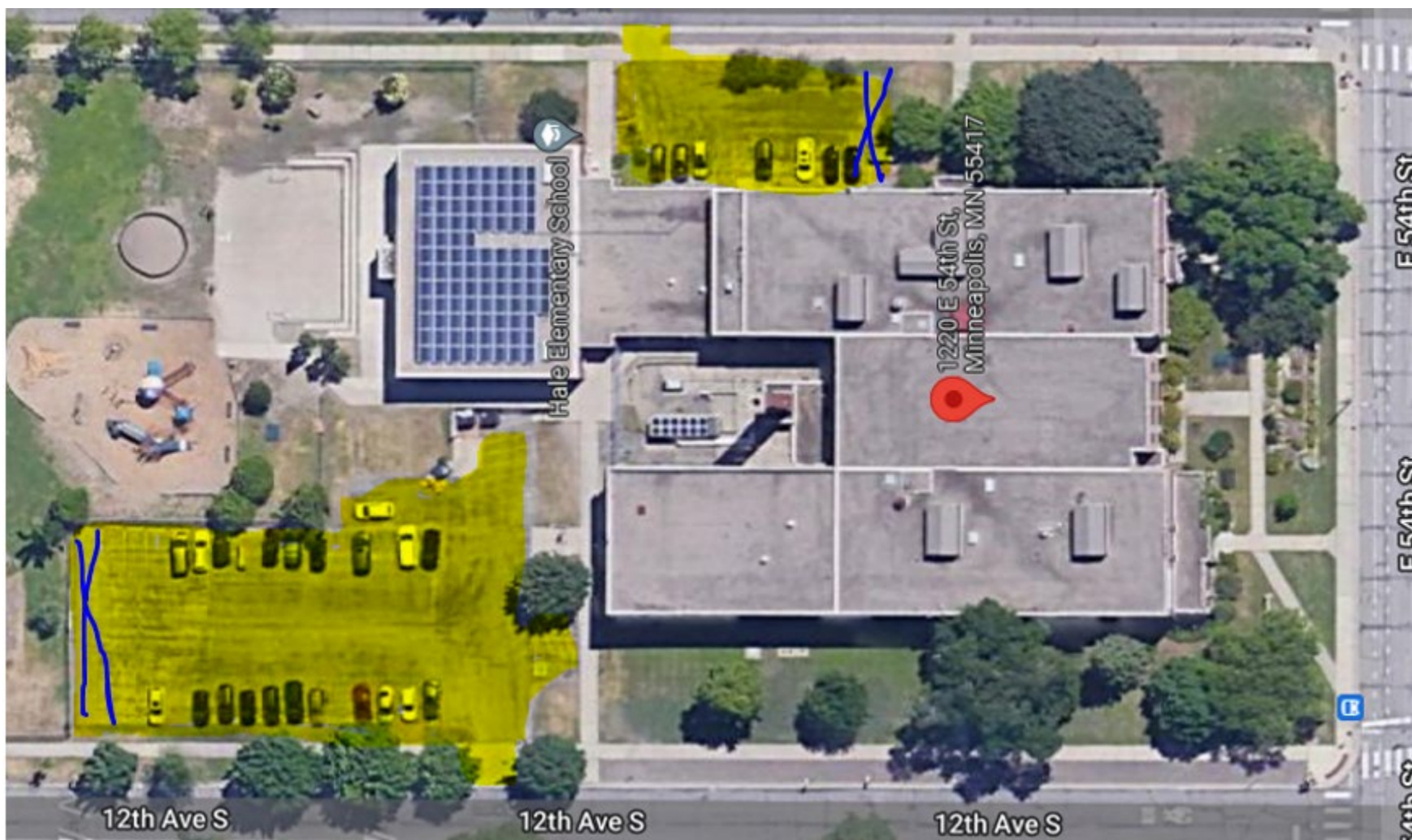


Red or Yellow outline indicates areas to be plowed. The blue highlighted/X areas indicate where the snow should be piled.



**Area A – Hale, 1220 East 54th Street, Minneapolis**

**Square Yards = 2,391**



Red or Yellow outline indicates areas to be plowed. The blue highlighted/X areas indicate where the snow should be piled.

**Area A – Kenny, 5720 Emerson Avenue South, Minneapolis**

**Square Yards = 3,150**

*Kenny is next to Anthony*



Red or Yellow outline indicates areas to be plowed. The blue highlighted/X areas indicate where the snow should be piled.



Area A – Lyndale, 312 West 34th Street, Minneapolis

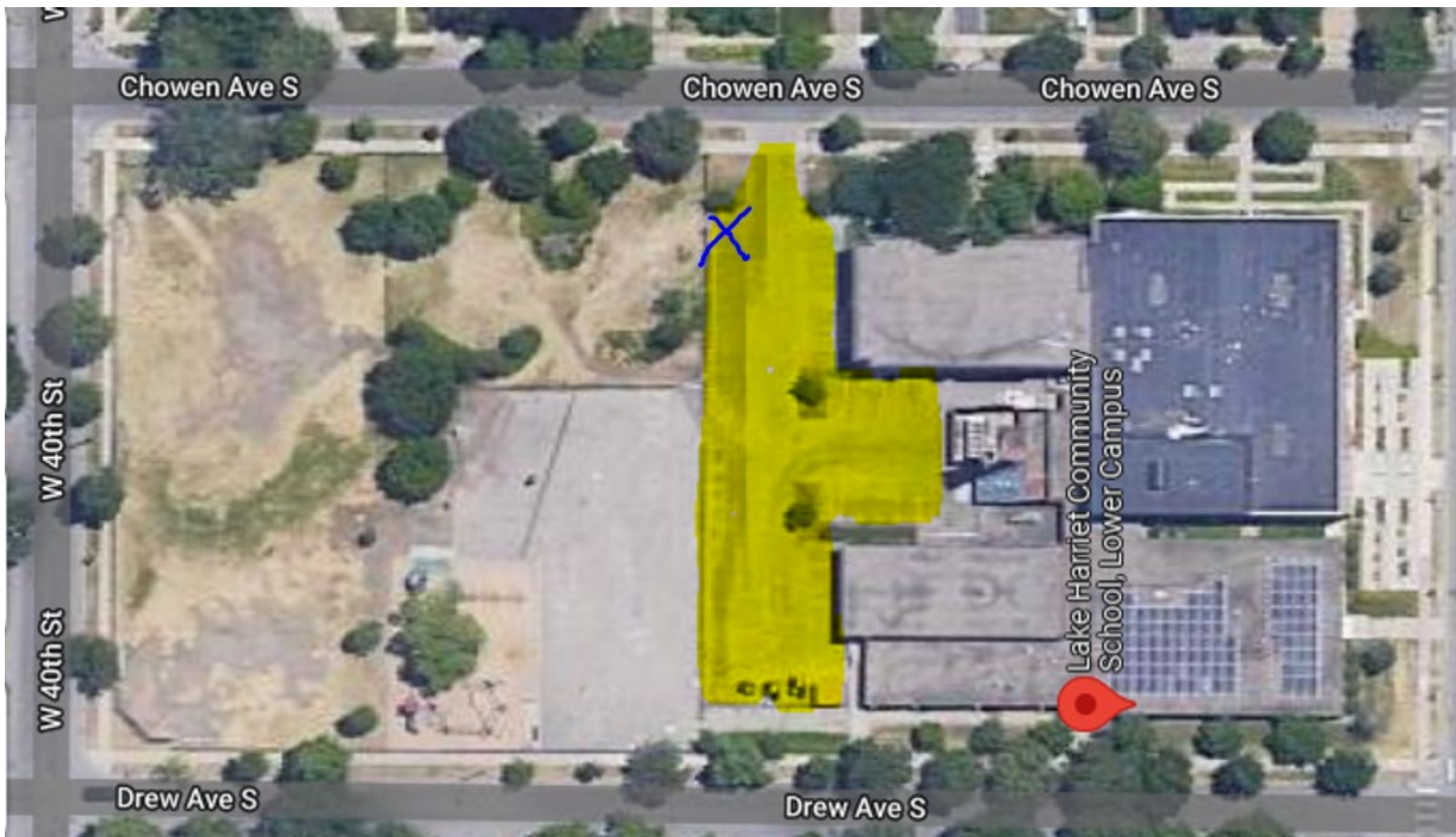
Square Yards = 2368



Red or Yellow outline indicates areas to be plowed. The blue highlighted/X areas indicate where the snow should be piled.

Area A - Lake Harriet Lower, 4030 Chowen Avenue South, Minneapolis

Square Yards = 2,397

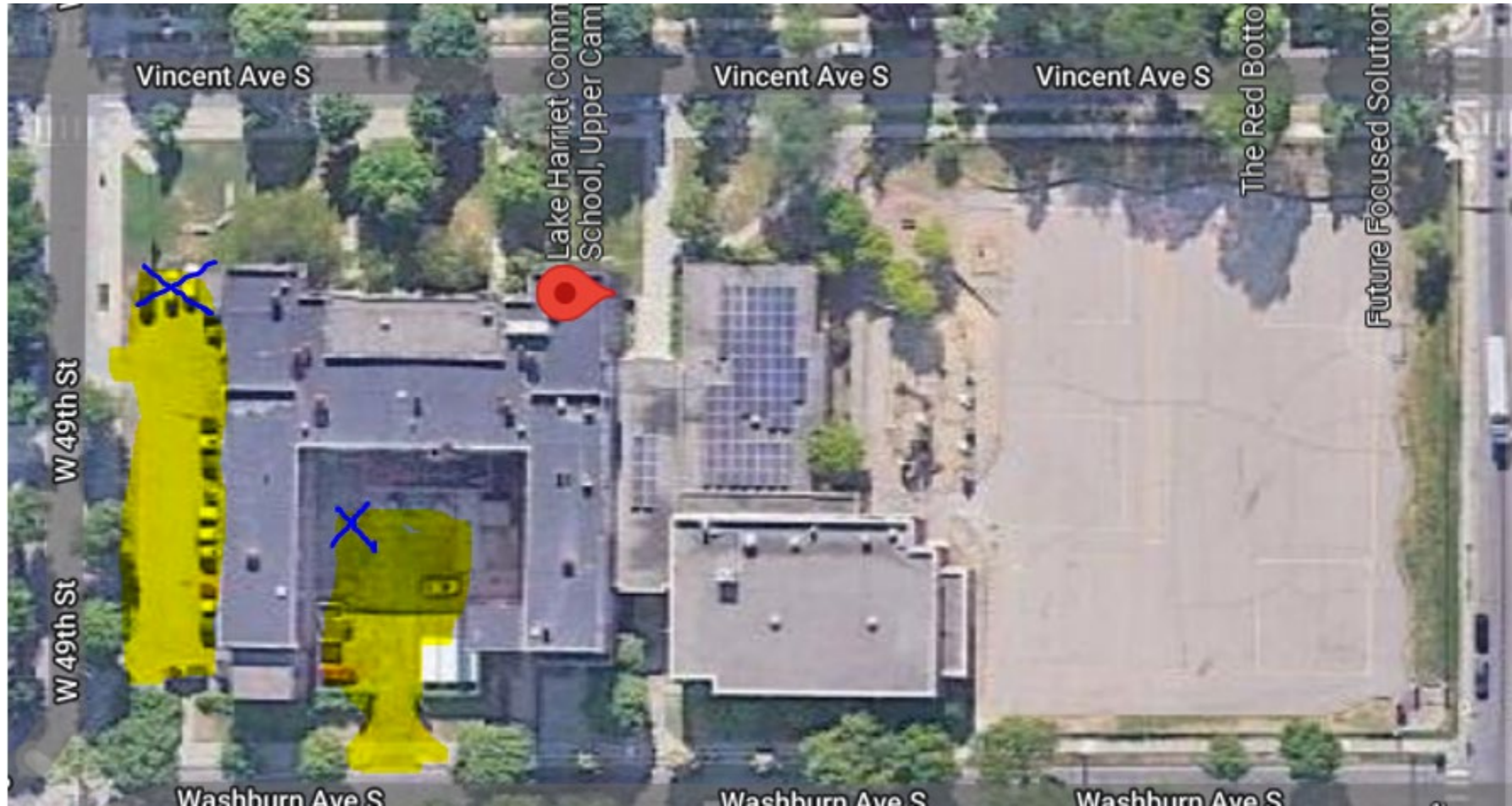


Red or Yellow outline indicates areas to be plowed. The blue highlighted/X areas indicate where the snow should be piled.



**Area A - Lake Harriet Upper, 4912 Vincent Avenue South, Minneapolis**

**Square Yards = 1,773**

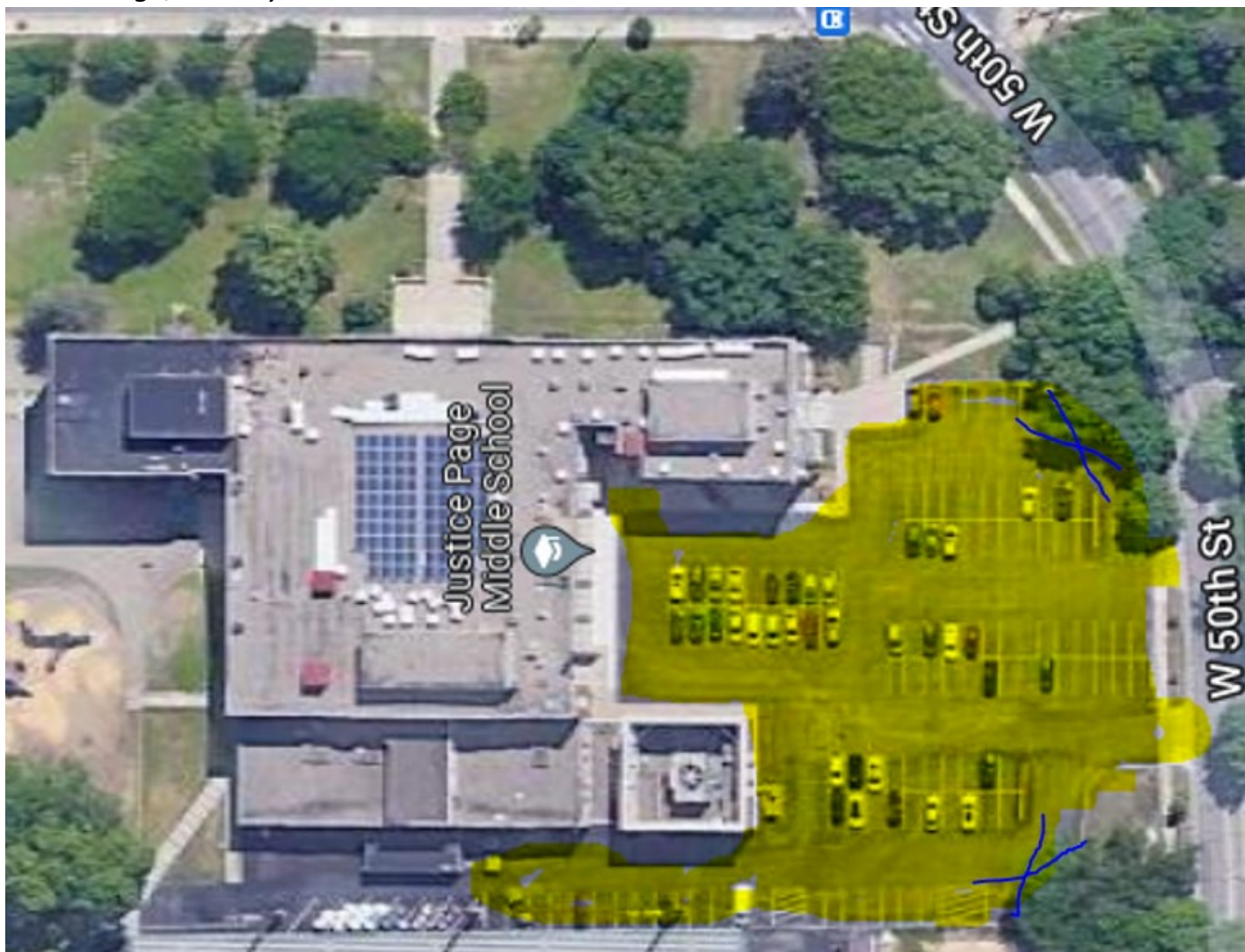


Red or Yellow outline indicates areas to be plowed. The blue highlighted/X areas indicate where the snow should be piled.

**Area A - Justice Page/Ramsey, 1 West 49<sup>th</sup> Street, Minneapolis, MN 55419**

**Square Yards = 5060**

*Justice Page/Ramsey is next to Washburn*

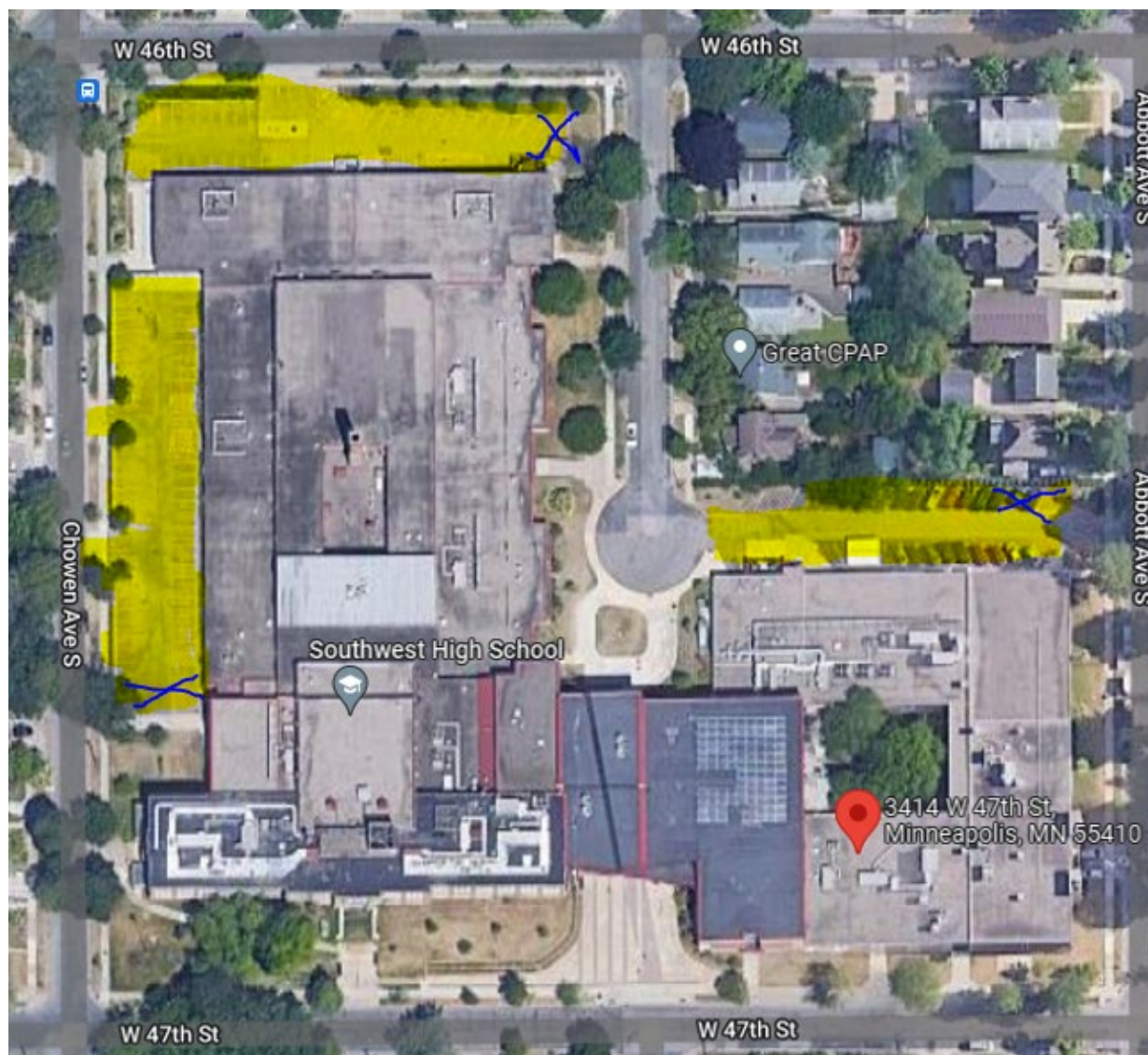


Red or Yellow outline indicates areas to be plowed. The blue highlighted/X areas indicate where the snow should be piled.



**Area A – Southwest, 3414 West 47th Street, Minneapolis**

**Square Yards = 4,784**

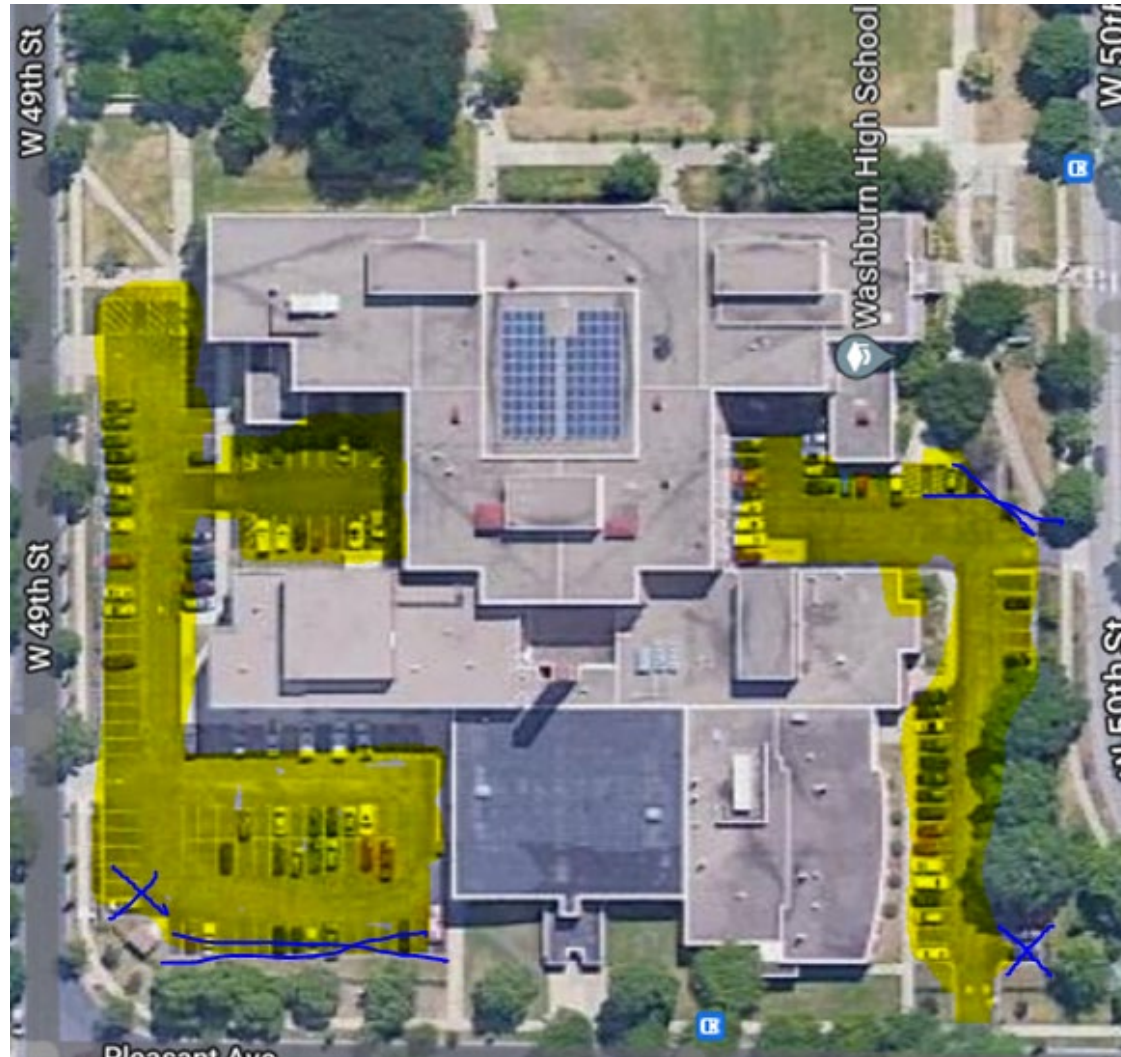


Red or Yellow outline indicates areas to be plowed. The blue highlighted/X areas indicate where the snow should be piled.

**Area A – Washburn, 201 West 49th Street, Minneapolis**

**Square Yards = 6,582**

*Washburn is next to Justice Page/Ramsey*

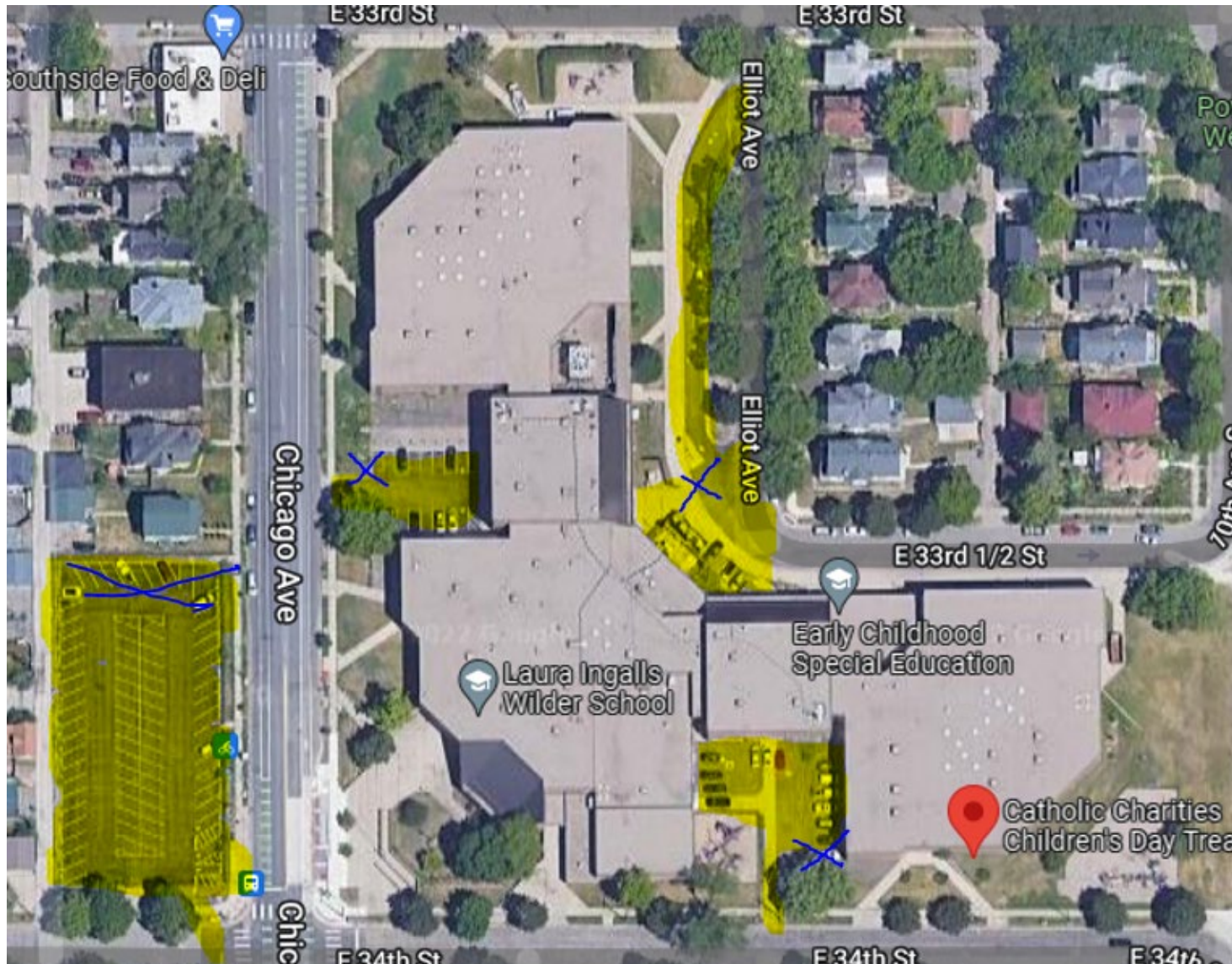


Red or Yellow outline indicates areas to be plowed. The blue highlighted/X areas indicate where the snow should be piled.



**Area A – Wilder, 932 East 34th Street, Minneapolis**

**Square Yards = 4,402**



Red or Yellow outline indicates areas to be plowed. The blue highlighted/X areas indicate where the snow should be piled.

Area A – Windom, 5821 Wentworth Avenue South, Minneapolis

Square Yards = 4,256



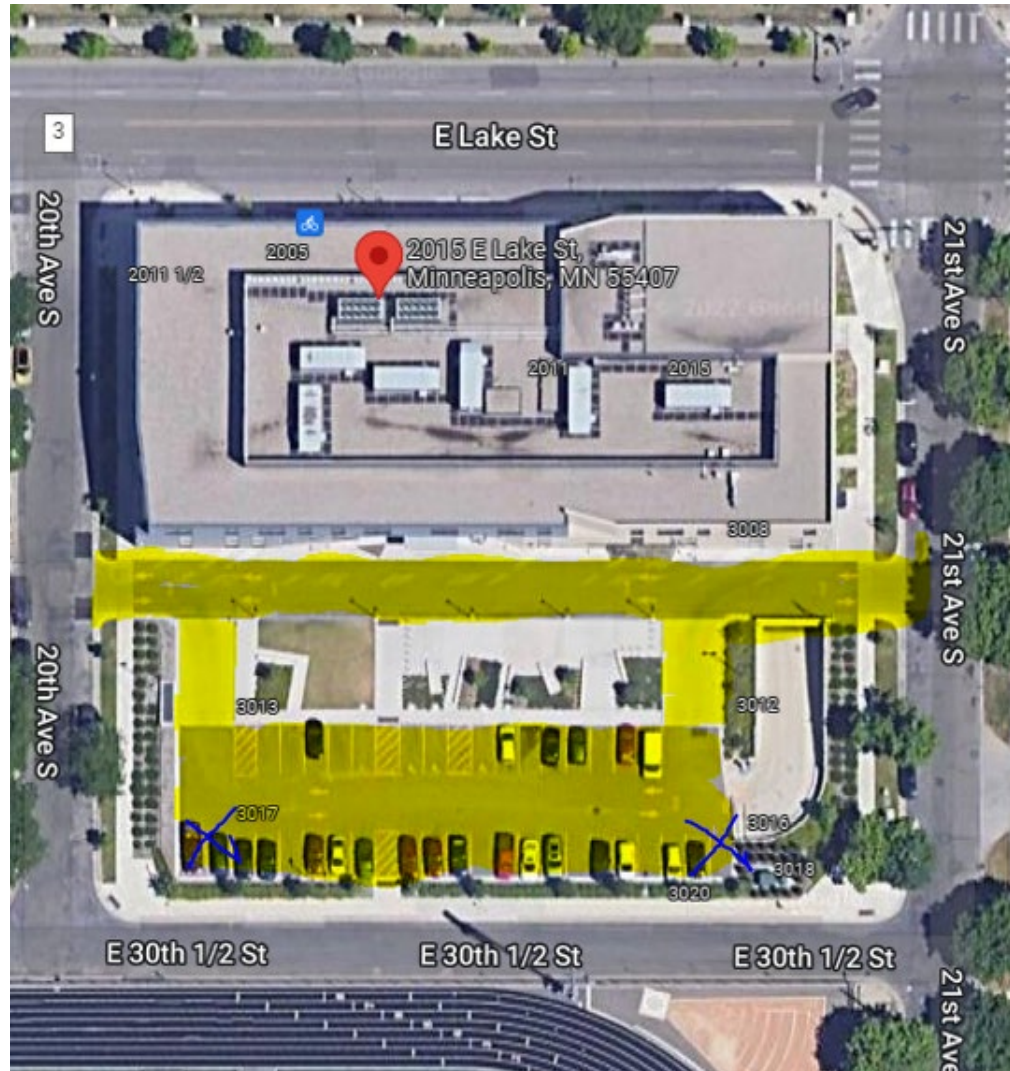
Red or Yellow outline indicates areas to be plowed. The blue highlighted/X areas indicate where the snow should be piled.



**Area B – Adult Learning Center (ALC), 2015 E Lake Street, Minneapolis**

**Square Yards = 2465**

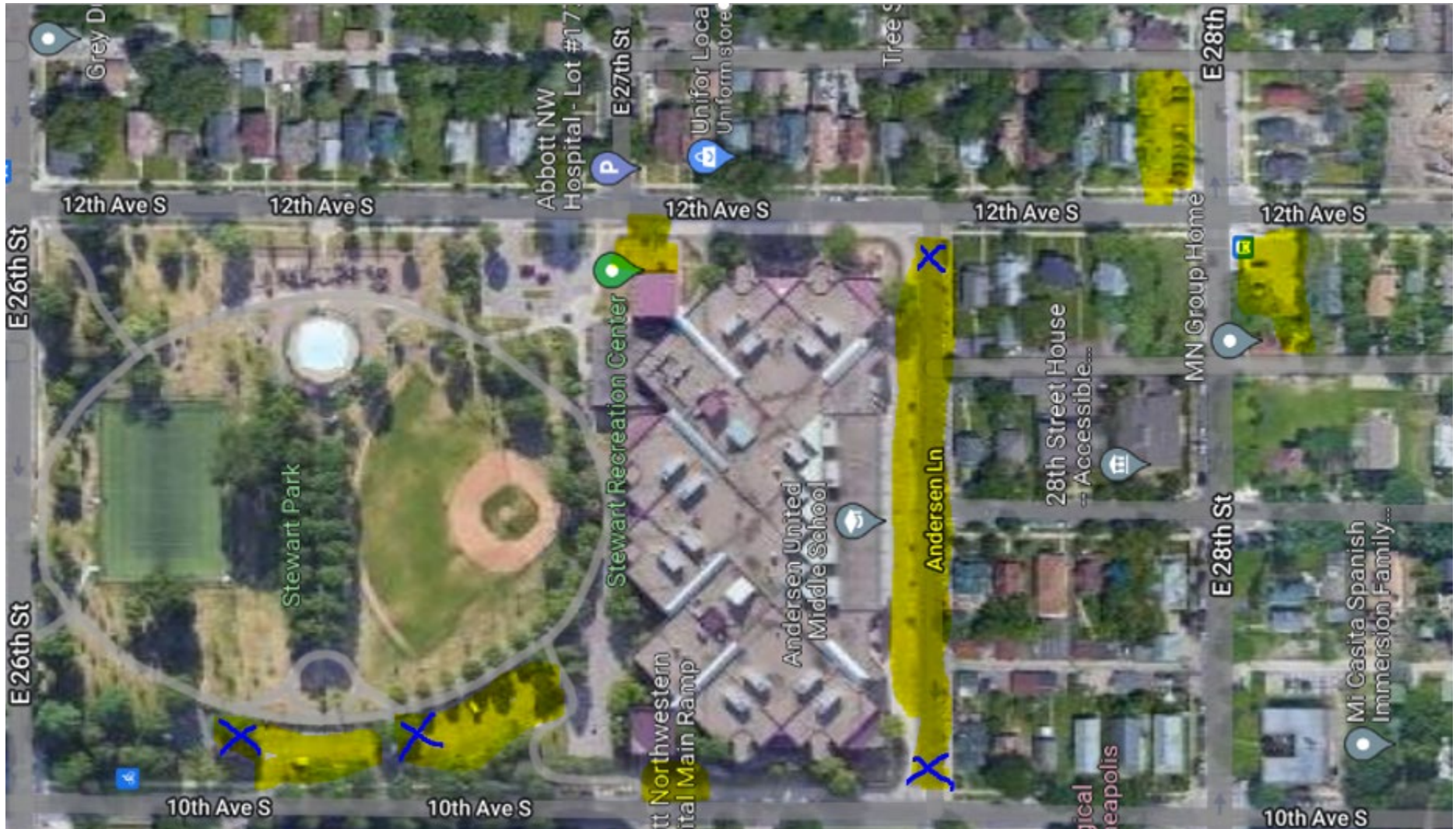
*Adult Learning Center (ALC) is on the other side of the football field from South*



Red or Yellow outline indicates areas to be plowed. The blue highlighted/X areas indicate where the snow should be piled.

**Area B – Andersen, 1098 Andersen Lane, Minneapolis**

**Square Yards = 6,882**

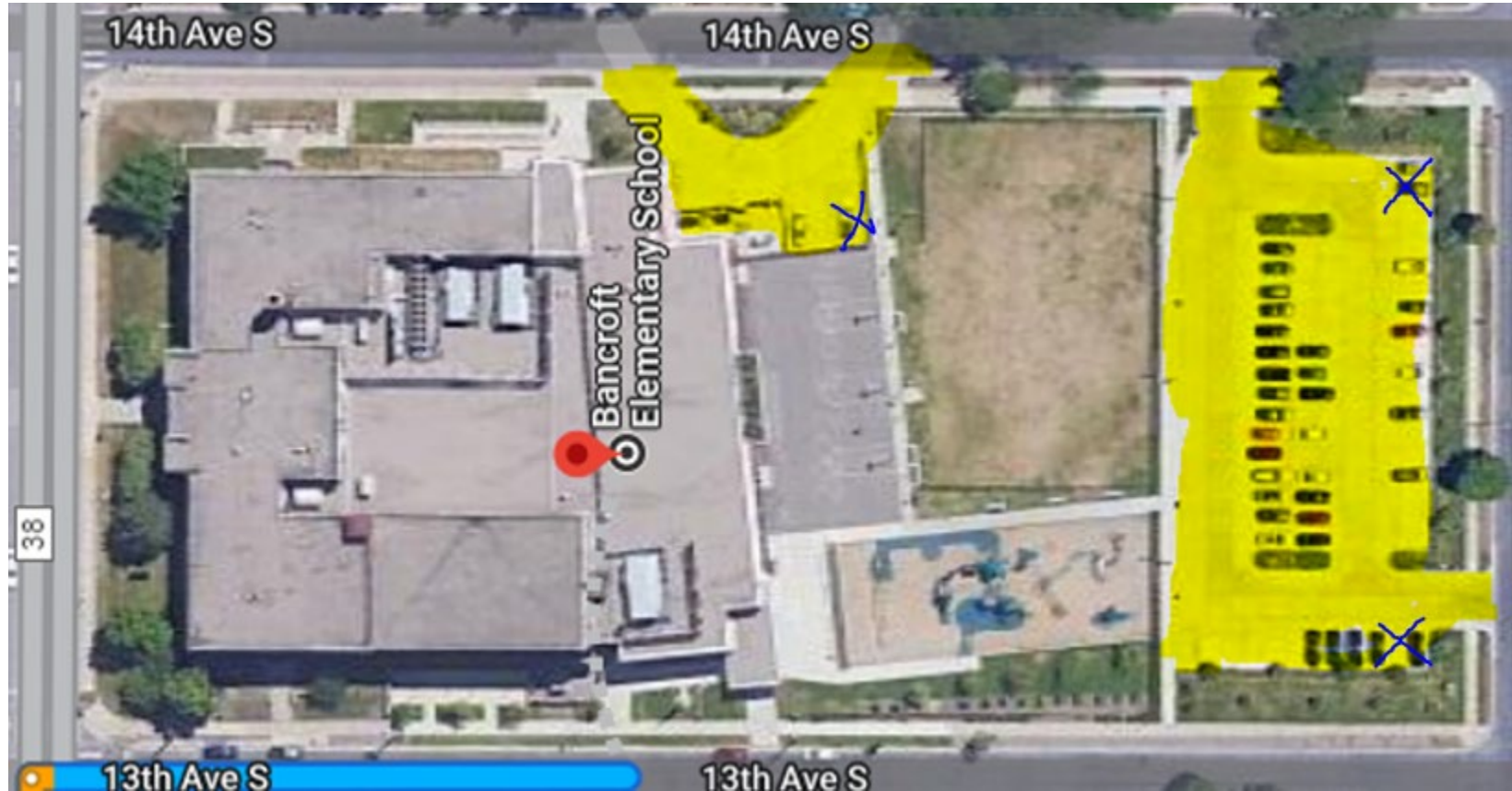


Red or Yellow outline indicates areas to be plowed. The blue highlighted/X areas indicate where the snow should be piled.



**Area B – Bancroft, 3829 13th Avenue S, Minneapolis**

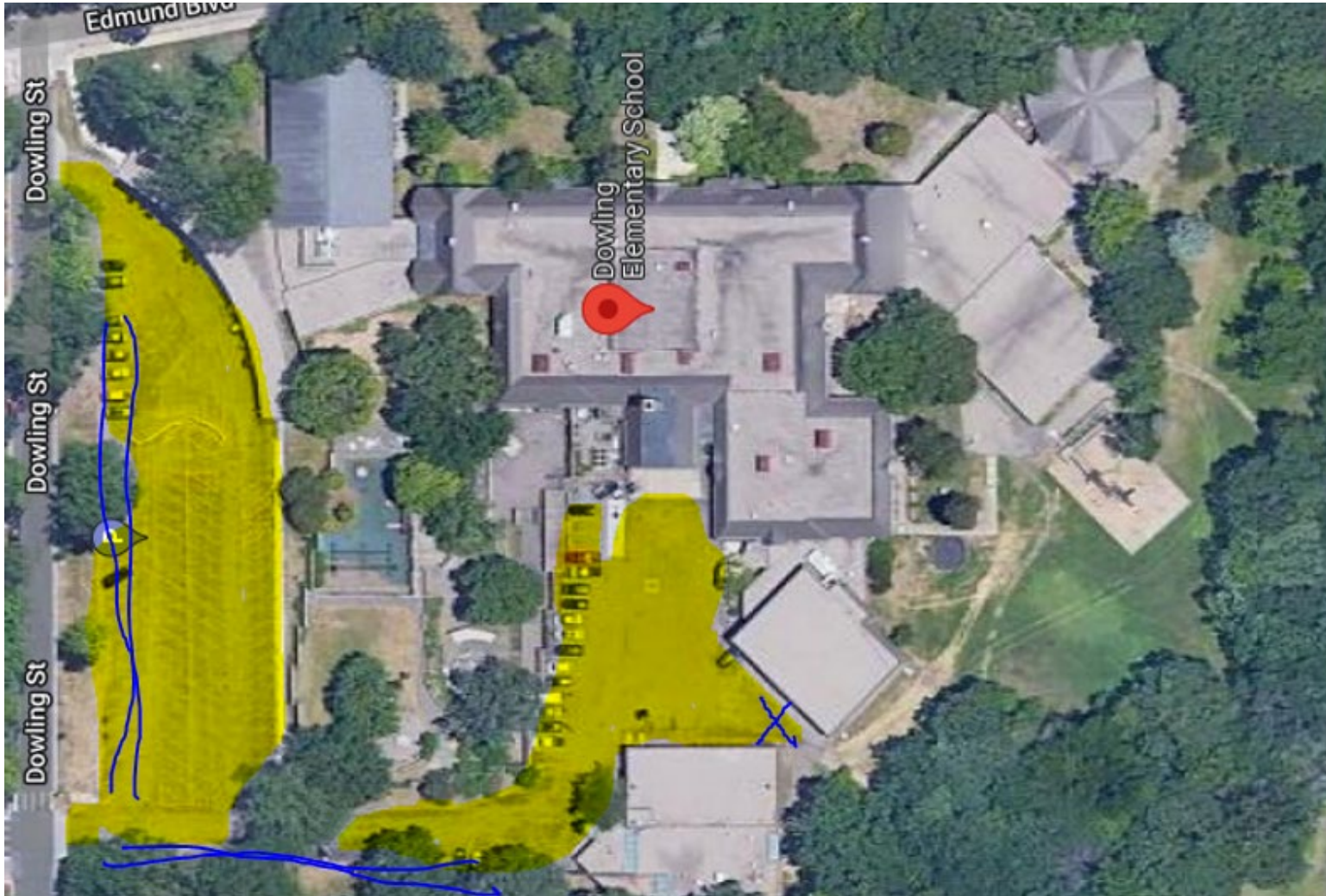
**Square Yards = 3,310**



Red or Yellow outline indicates areas to be plowed. The blue highlighted/X areas indicate where the snow should be piled.

**Area B – Dowling, 3900 West River Parkway, Minneapolis**

**Square Yards = 7,588**



Red or Yellow outline indicates areas to be plowed. The blue highlighted/X areas indicate where the snow should be piled.



**Area B – Emerson, 1421 Spruce Place, Minneapolis**

**Square Yards = 4,108**



Red or Yellow outline indicates areas to be plowed. The blue highlighted/X areas indicate where the snow should be piled.

**Area B – Northrup/Ericsson, 4315 – 31st Avenue South, Minneapolis**

**Square Yards = 1,470**

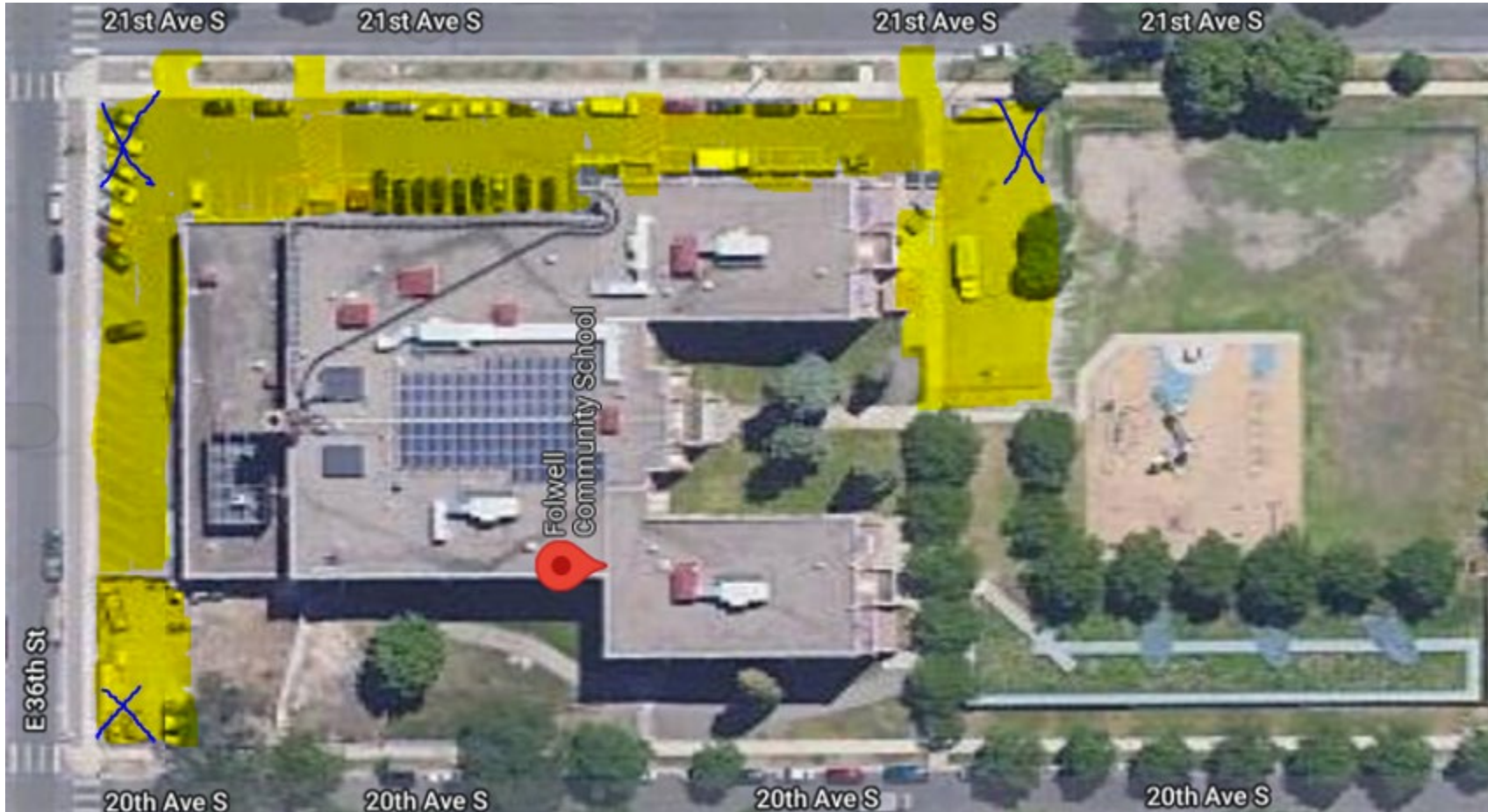


Red or Yellow outline indicates areas to be plowed. The blue highlighted/X areas indicate where the snow should be piled.



**Area B – Folwell, 3611 20th Ave. S., Minneapolis**

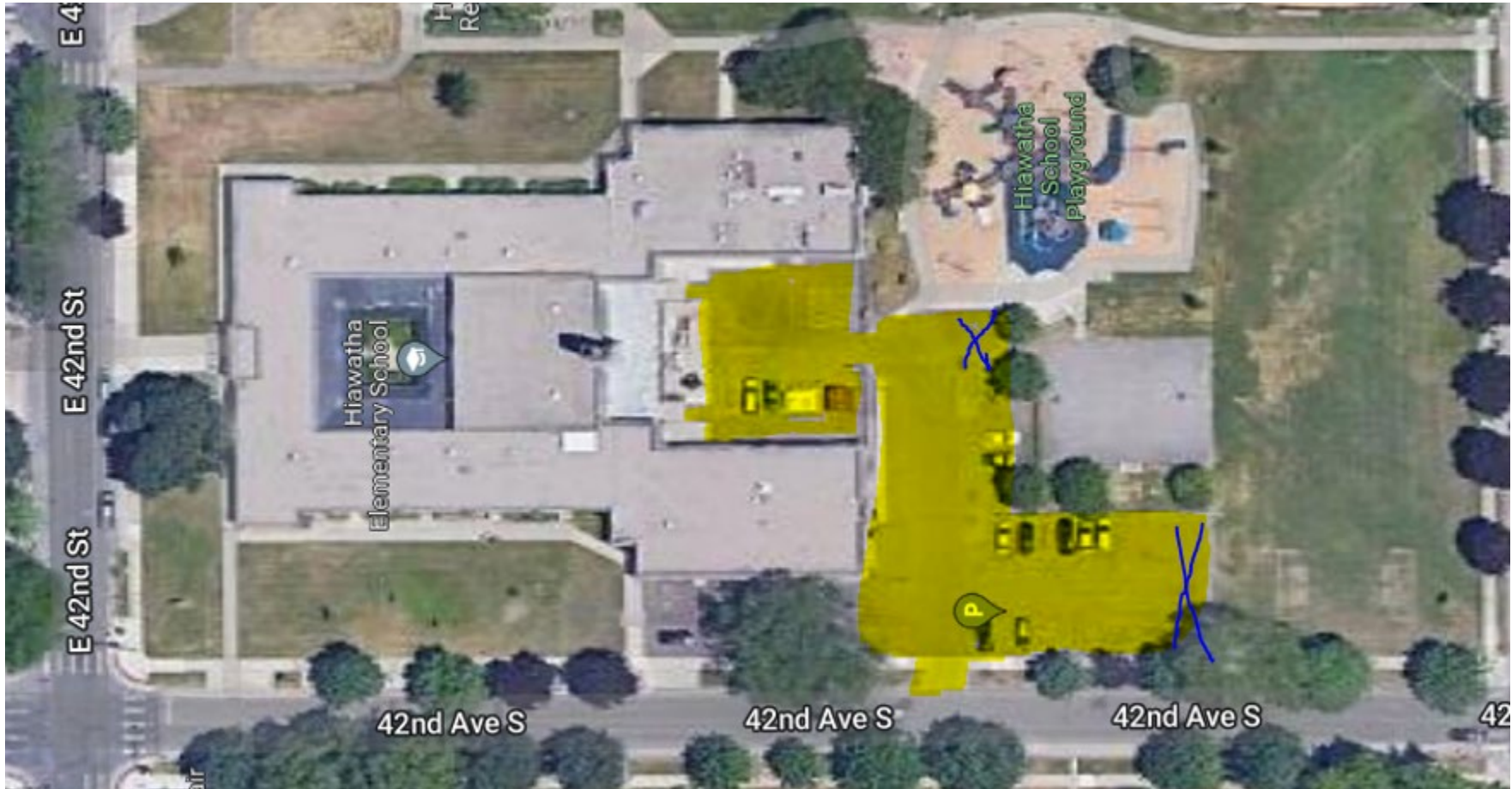
**Square Yards = 2,746**



Red or Yellow outline indicates areas to be plowed. The blue highlighted/X areas indicate where the snow should be piled.

**Area B – Hiawatha, 4201 – 42nd Avenue South, Minneapolis**

**Square Yards = 2,602**



Red or Yellow outline indicates areas to be plowed. The blue highlighted/X areas indicate where the snow should be piled.



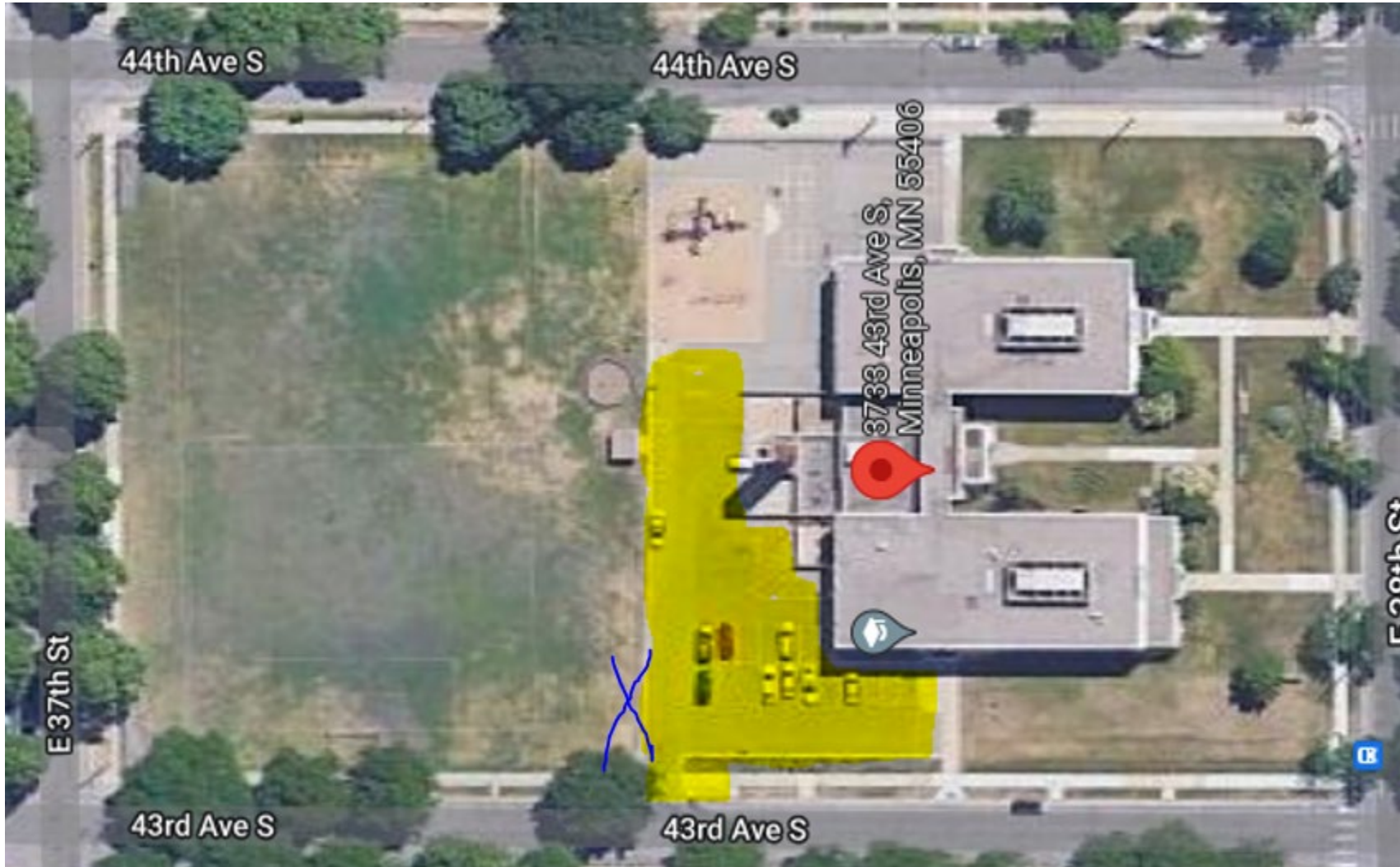


MINNEAPOLIS  
PUBLIC SCHOOLS  
Urban Education. Global Citizens.

RFP \_\_-\_\_ Snow Removal  
Appendix 4 - Pricing  
District Parking Lot Maps

**Area B – Howe, 3733 43rd Avenue South, Minneapolis**

**Square Yards = 1,640**



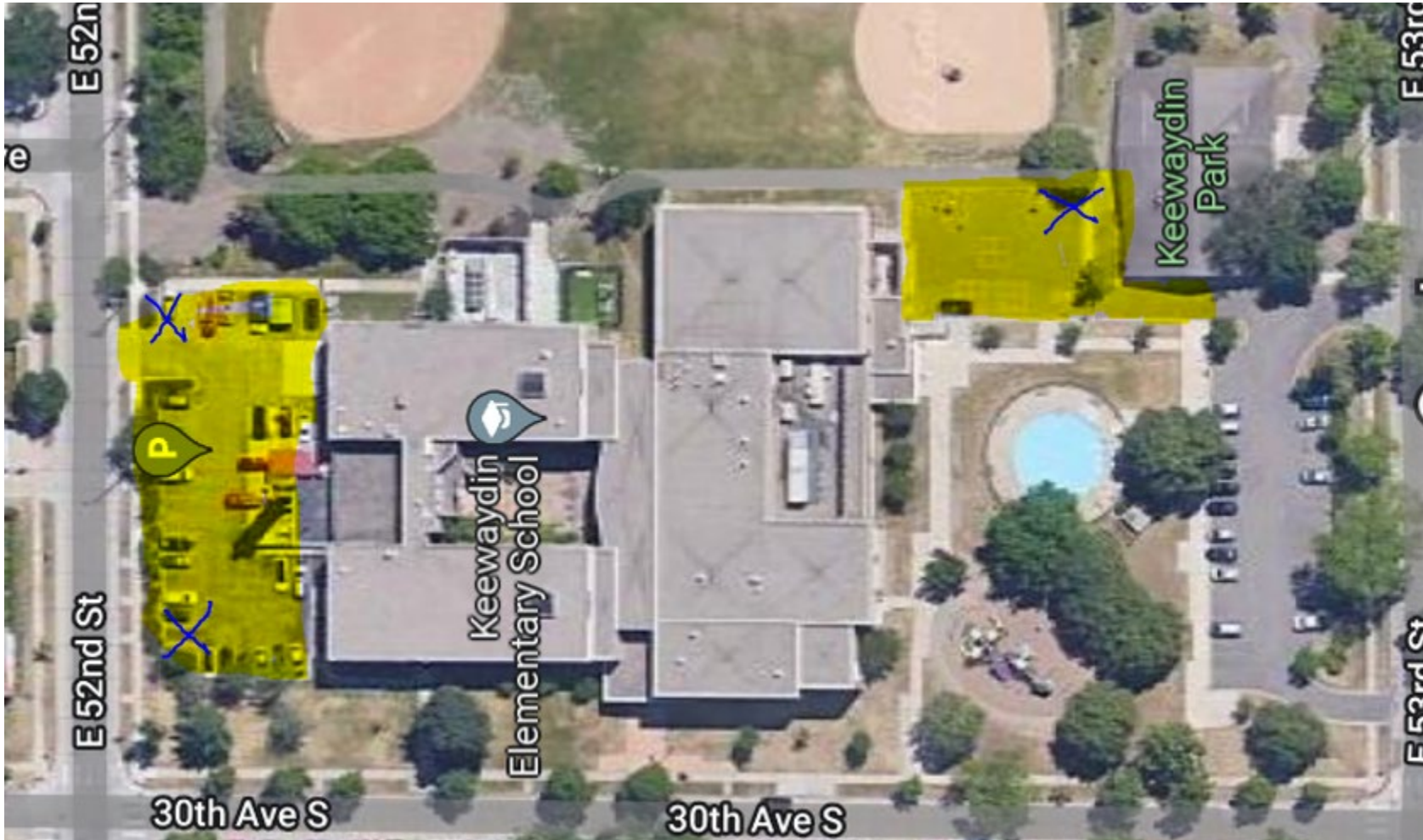
Red or Yellow outline indicates areas to be plowed. The blue highlighted/X areas indicate where the snow should be piled.



MINNEAPOLIS  
PUBLIC SCHOOLS  
Urban Education. Global Citizens.

RFP \_\_-\_\_ Snow Removal  
Appendix 4 - Pricing  
District Parking Lot Maps

**Area B – Keewaydin, 5209 – 30th Avenue South, Minneapolis**      Square Yards = 3,560

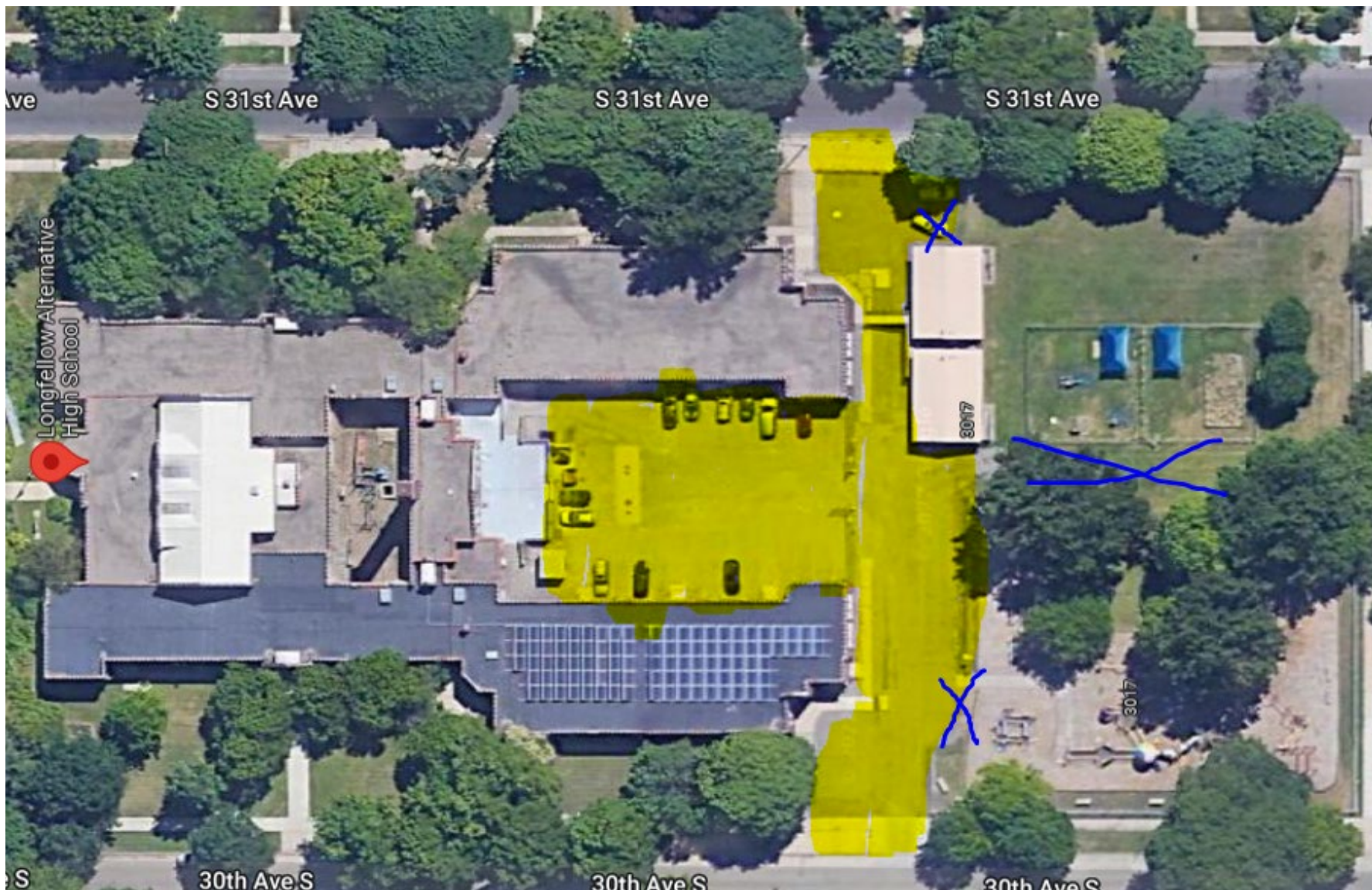


Red or Yellow outline indicates areas to be plowed. The blue highlighted/X areas indicate where the snow should be piled.



**Area B – Longfellow, 3017 East 31<sup>st</sup> St., Minneapolis**

**Square Yards = 2,291**

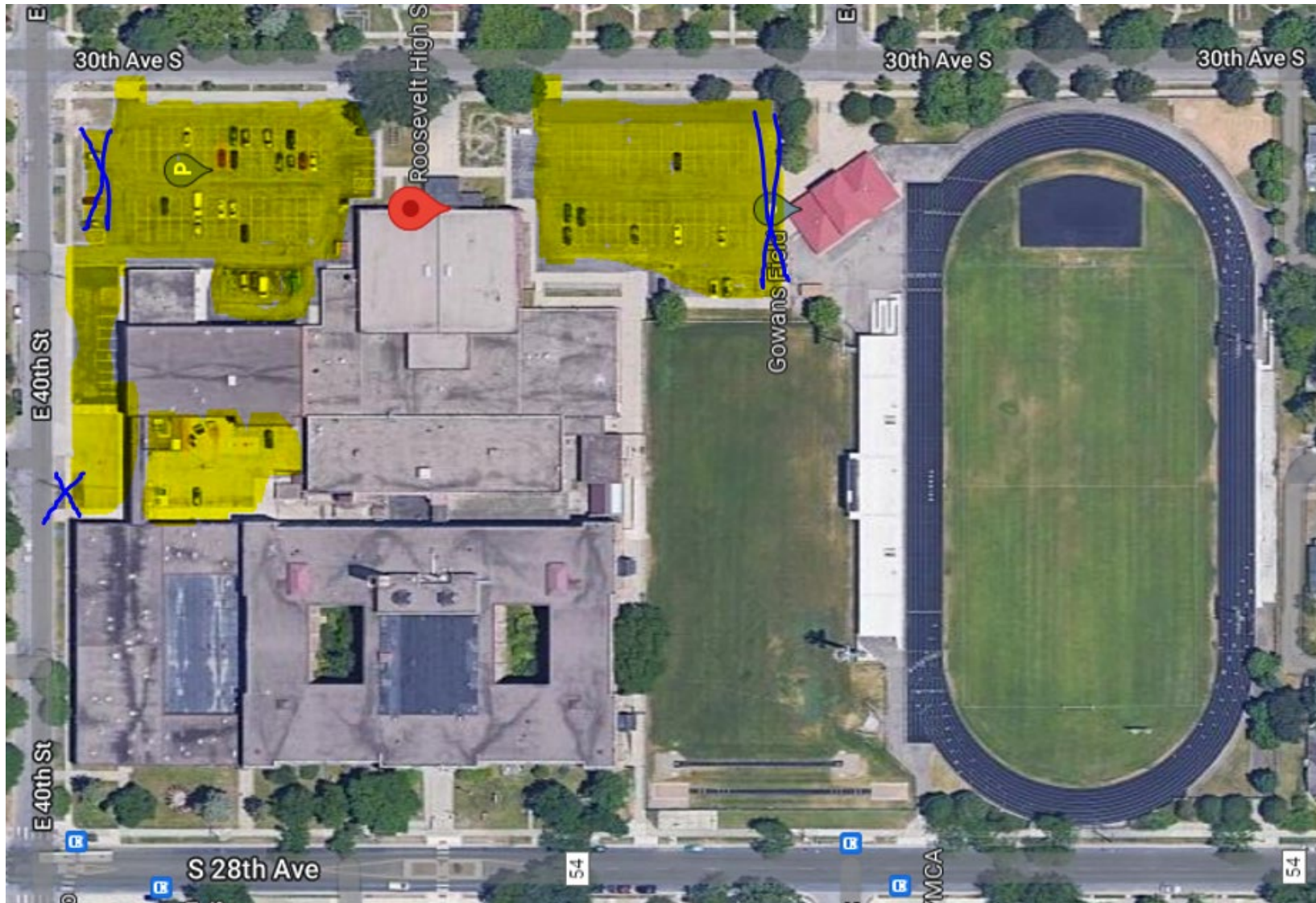


Red or Yellow outline indicates areas to be plowed. The blue highlighted/X areas indicate where the snow should be piled.



**Area B – Roosevelt, 4029 – 28th Avenue South, Minneapolis**

**Square Yards = 9,281**



Red or Yellow outline indicates areas to be plowed. The blue highlighted/X areas indicate where the snow should be piled.



**Area B – Sanford, 3524 42<sup>nd</sup> Avenue South, Minneapolis**

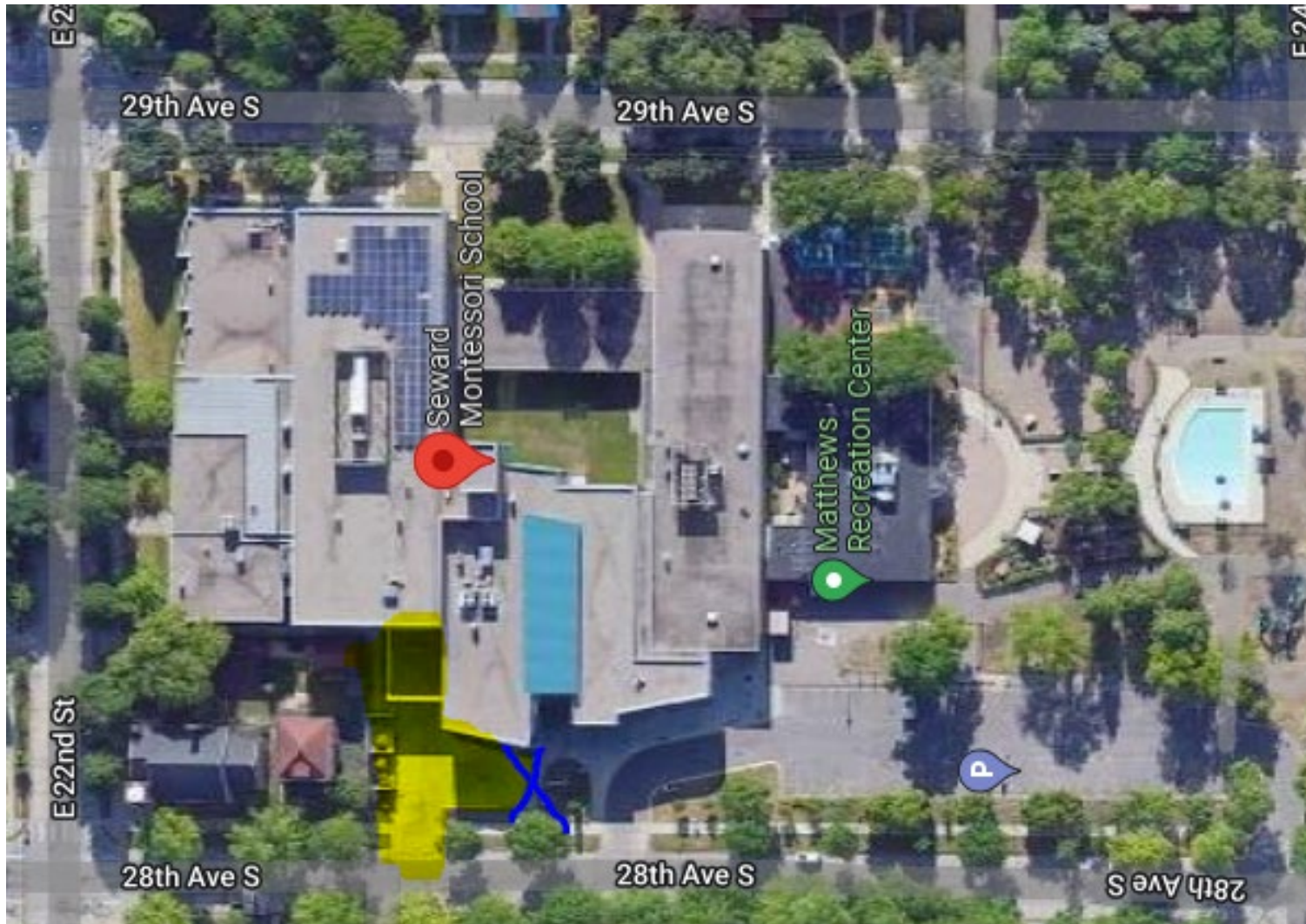
**Square Yards = 3,212**



Red or Yellow outline indicates areas to be plowed. The blue highlighted/X areas indicate where the snow should be piled.

**Area B – Seward, 2309 28<sup>th</sup> Avenue South, Minneapolis**

**Square Yards = 376**



Red or Yellow outline indicates areas to be plowed. The blue highlighted/X areas indicate where the snow should be piled.





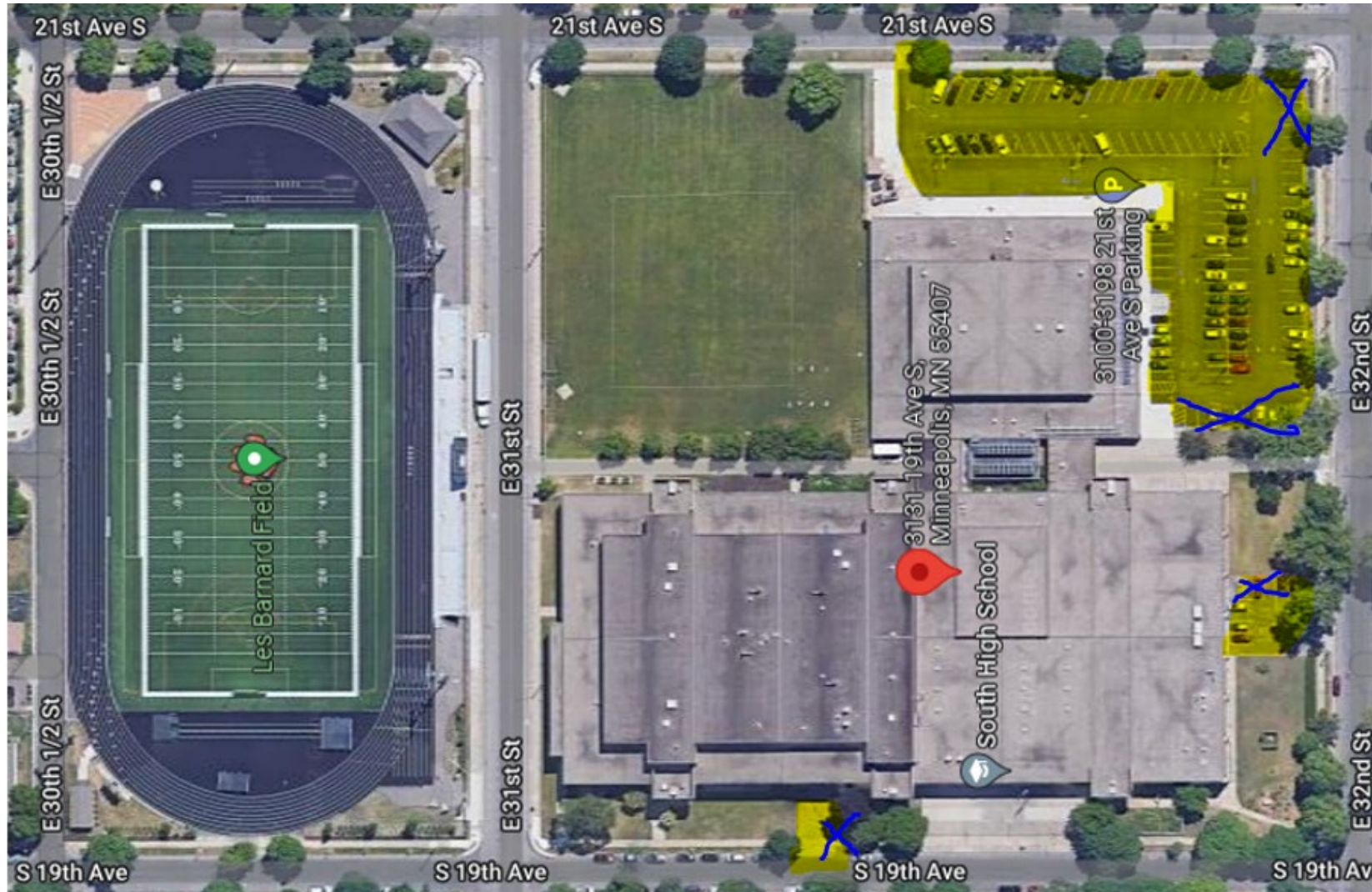
MINNEAPOLIS  
PUBLIC SCHOOLS  
Urban Education. Global Citizens.

RFP \_\_-\_\_ Snow Removal  
Appendix 4 - Pricing  
District Parking Lot Maps

**Area B – South, 3131 19<sup>th</sup> Avenue South, Minneapolis**

**Square Yards = 6,313**

*Adult Learning Center (ALC) is on the other side of the football field*



Red or Yellow outline indicates areas to be plowed. The blue highlighted/X areas indicate where the snow should be piled.

**Area B – Sullivan, 3100 East 28<sup>th</sup> Street, Minneapolis**

**Square Yards = 9,818**



Red or Yellow outline indicates areas to be plowed. The blue highlighted/X areas indicate where the snow should be piled.



**Area B – Wenonah, 5625 23<sup>rd</sup> Avenue South, Minneapolis**

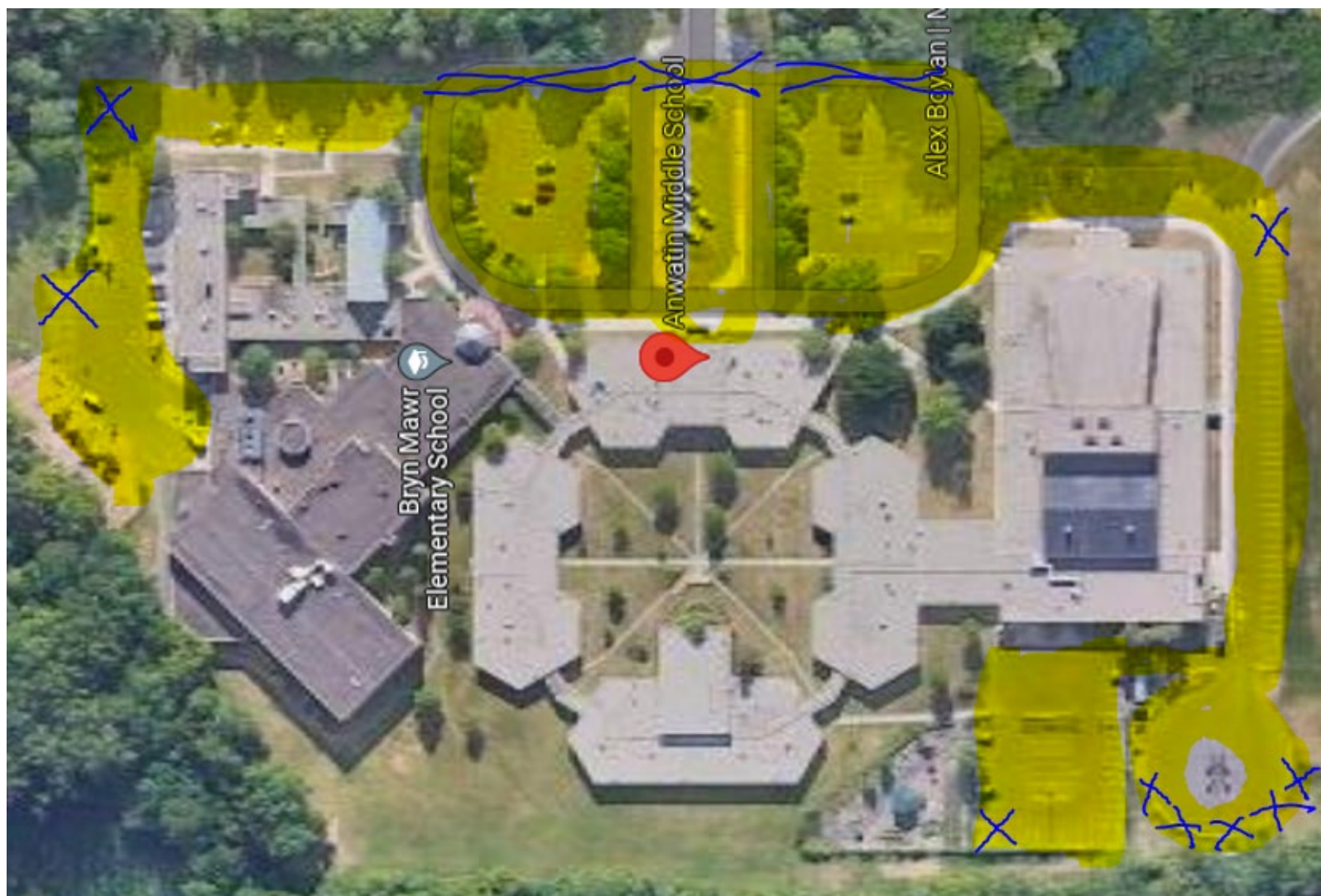
**Square Yards = 1,898**



Red or Yellow outline indicates areas to be plowed. The blue highlighted/X areas indicate where the snow should be piled.

**Area C – Anwatin/Bryn Mawr 256 Upton & 252 Upton Avenue South, Minneapolis**

**Sq Yds = 21,917**



Red or Yellow outline indicates areas to be plowed. The blue highlighted/X areas indicate where the snow should be piled.



**Area C – Jefferson/Ella Baker, 1200 West 26<sup>th</sup> Street, Minneapolis**

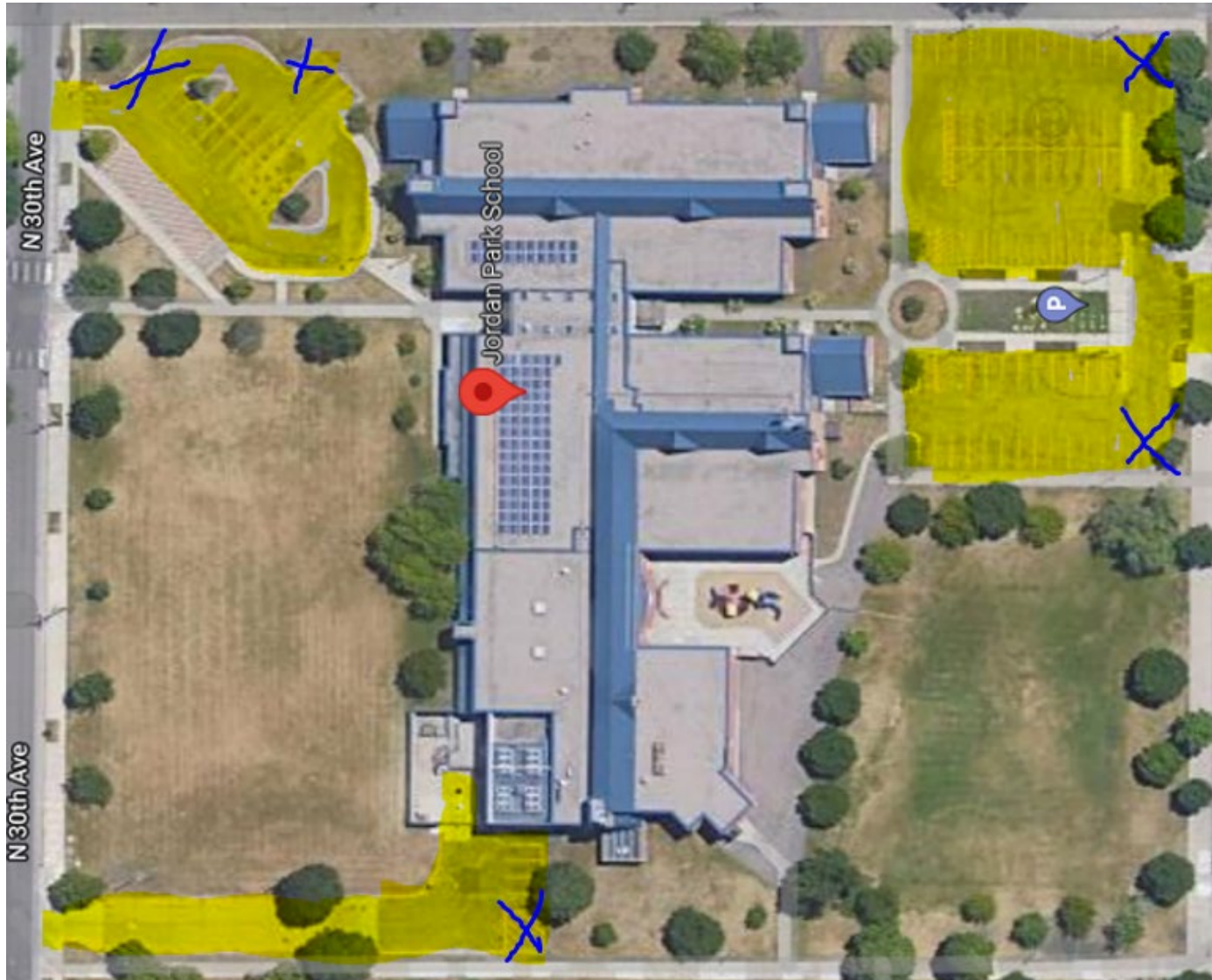
**Square Yards = 3,863**



Red or Yellow outline indicates areas to be plowed. The blue highlighted/X areas indicate where the snow should be piled.

**Area C – Jordan Park, 1501 30<sup>th</sup> Avenue N, Minneapolis**

**Square Yards = 5,903**



Red or Yellow outline indicates areas to be plowed. The blue highlighted/X areas indicate where the snow should be piled.





MINNEAPOLIS  
PUBLIC SCHOOLS  
Urban Education. Global Citizens.

RFP \_\_-\_\_ Snow Removal  
Appendix 4 - Pricing  
District Parking Lot Maps

**Area C – Lucy Laney, 3333 Penn Avenue North, Minneapolis**

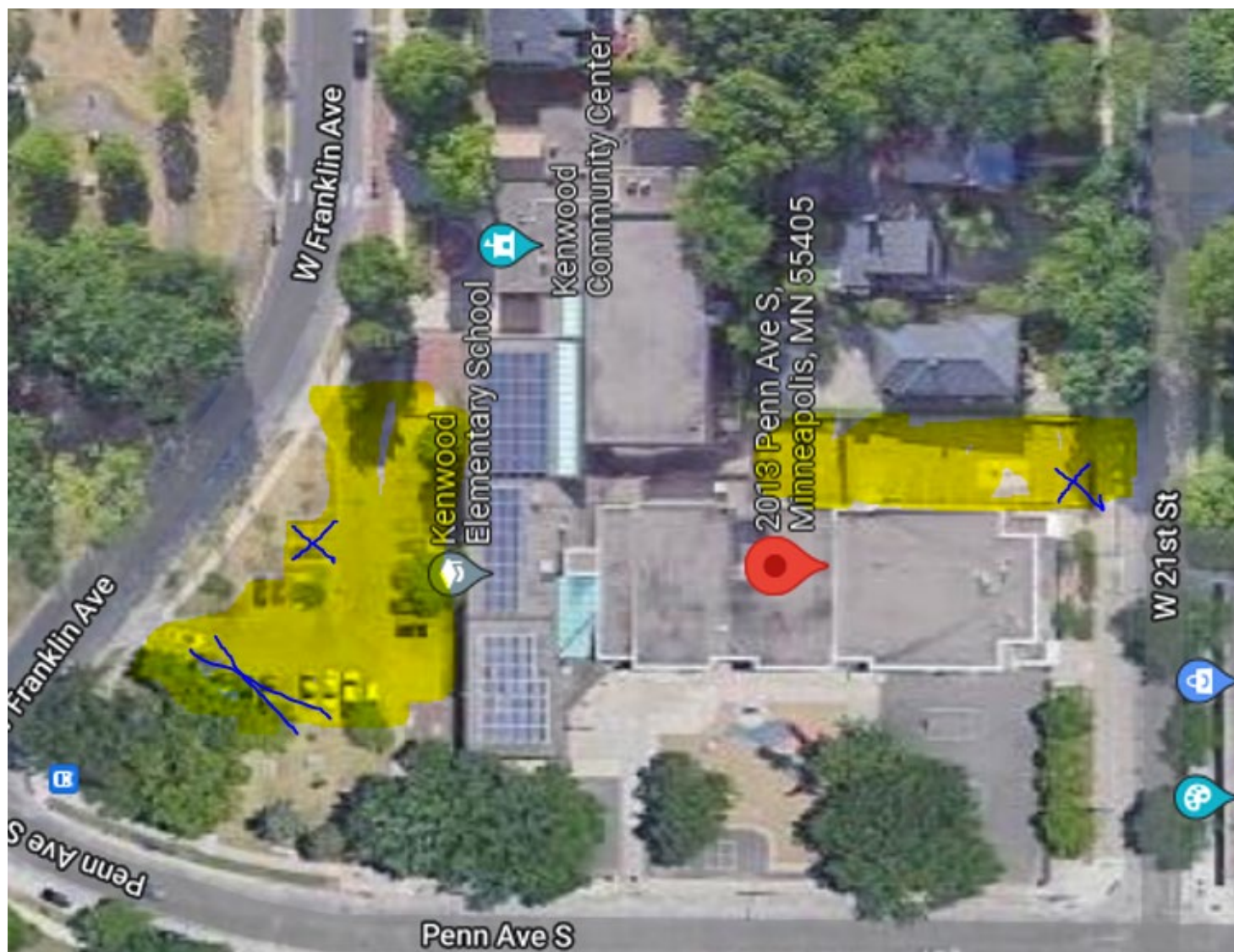
**Square Yards = 6,093**



Red or Yellow outline indicates areas to be plowed. The blue highlighted/X areas indicate where the snow should be piled.

**Area C – Kenwood, 2013 Penn Avenue South, Minneapolis**

**Square Yards = 1,575**



Red or Yellow outline indicates areas to be plowed. The blue highlighted/X areas indicate where the snow should be piled.



**Area C – Nellie Stone Johnson 807 27<sup>th</sup> Avenue North, Minneapolis**

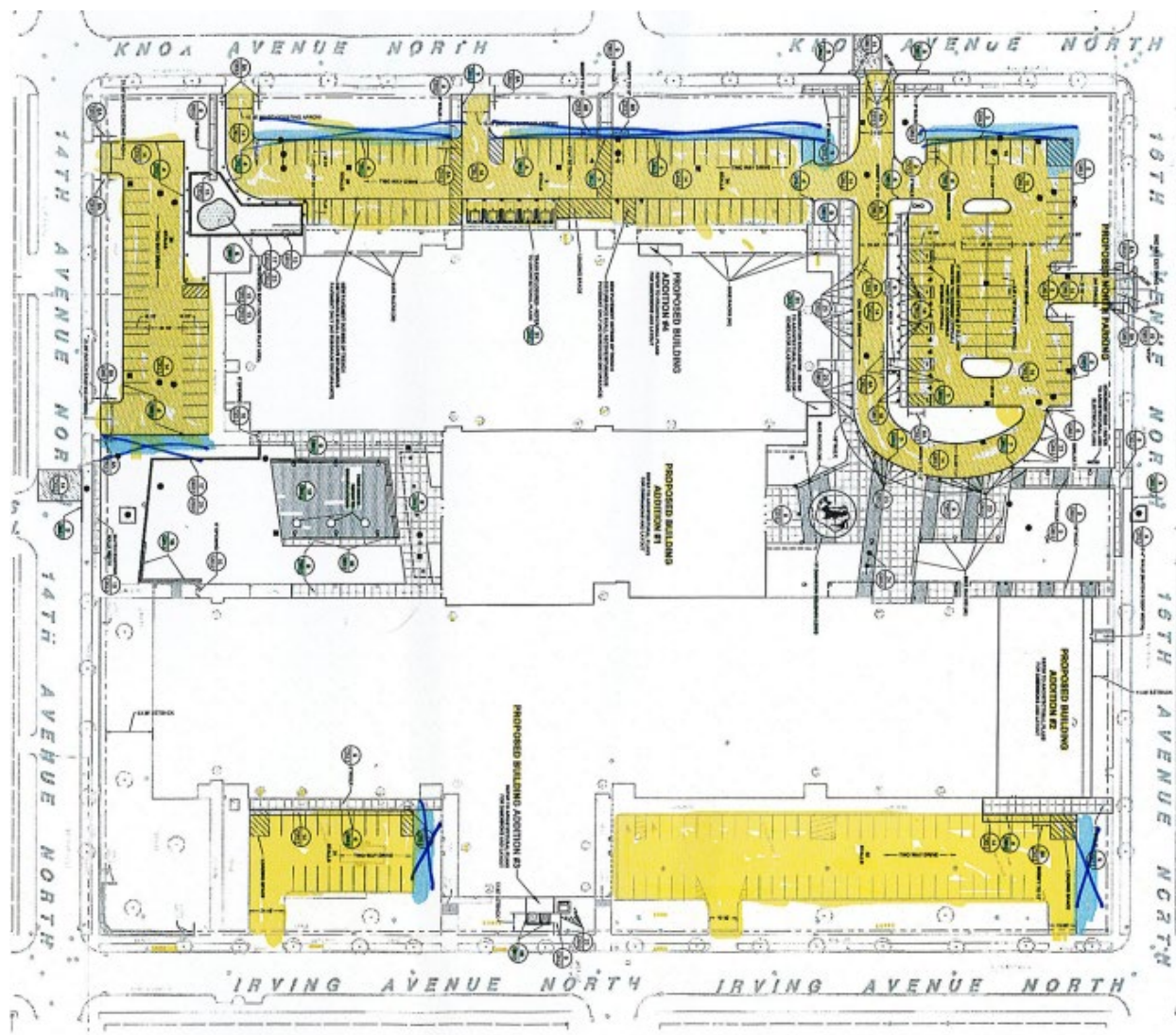
**Square Yards = 5,493**



Red or Yellow outline indicates areas to be plowed. The blue highlighted/X areas indicate where the snow should be piled.

**Area C – North, 1500 James Avenue North, Minneapolis**

**Square Yards = 10,443**



Red or Yellow outline indicates areas to be plowed. The blue highlighted/X areas indicate where the snow should be piled.



**Area C – Pratt, 66 Malcolm Avenue SE, Minneapolis**

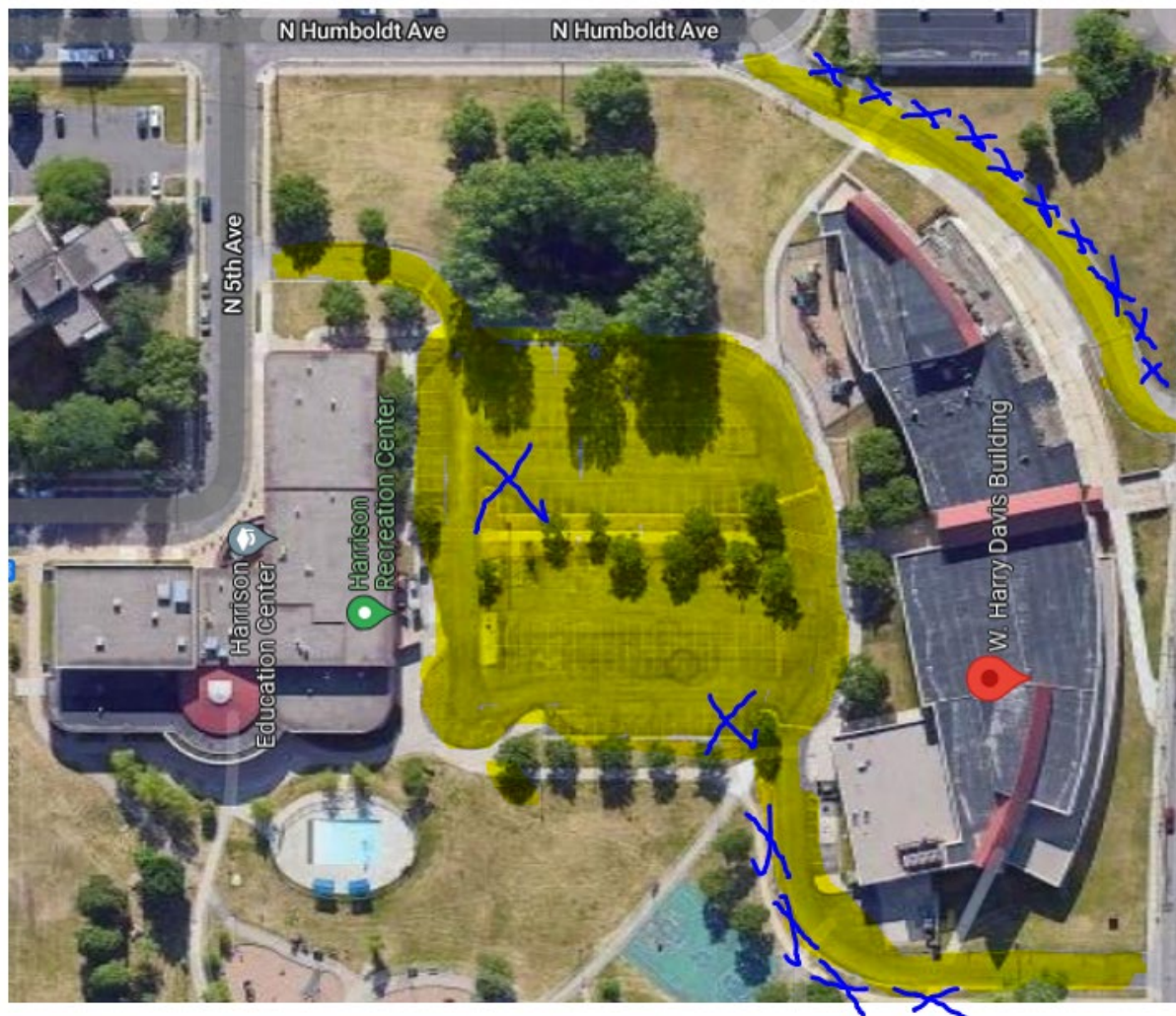
**Square Yards = 2,681**



Red or Yellow outline indicates areas to be plowed. The blue highlighted/X areas indicate where the snow should be piled.

**Area C – WH Davis/Harrison 1510 Glenwood Avenue & 501 Irving Avenue N, Minneapolis** Sq Yds = 10,124

*Harrison and W. Harry Davis share a parking lot.*



Red or Yellow outline indicates areas to be plowed. The blue highlighted/X areas indicate where the snow should be piled.



**Area C – Whittier, 315 West 26th Street, Minneapolis**

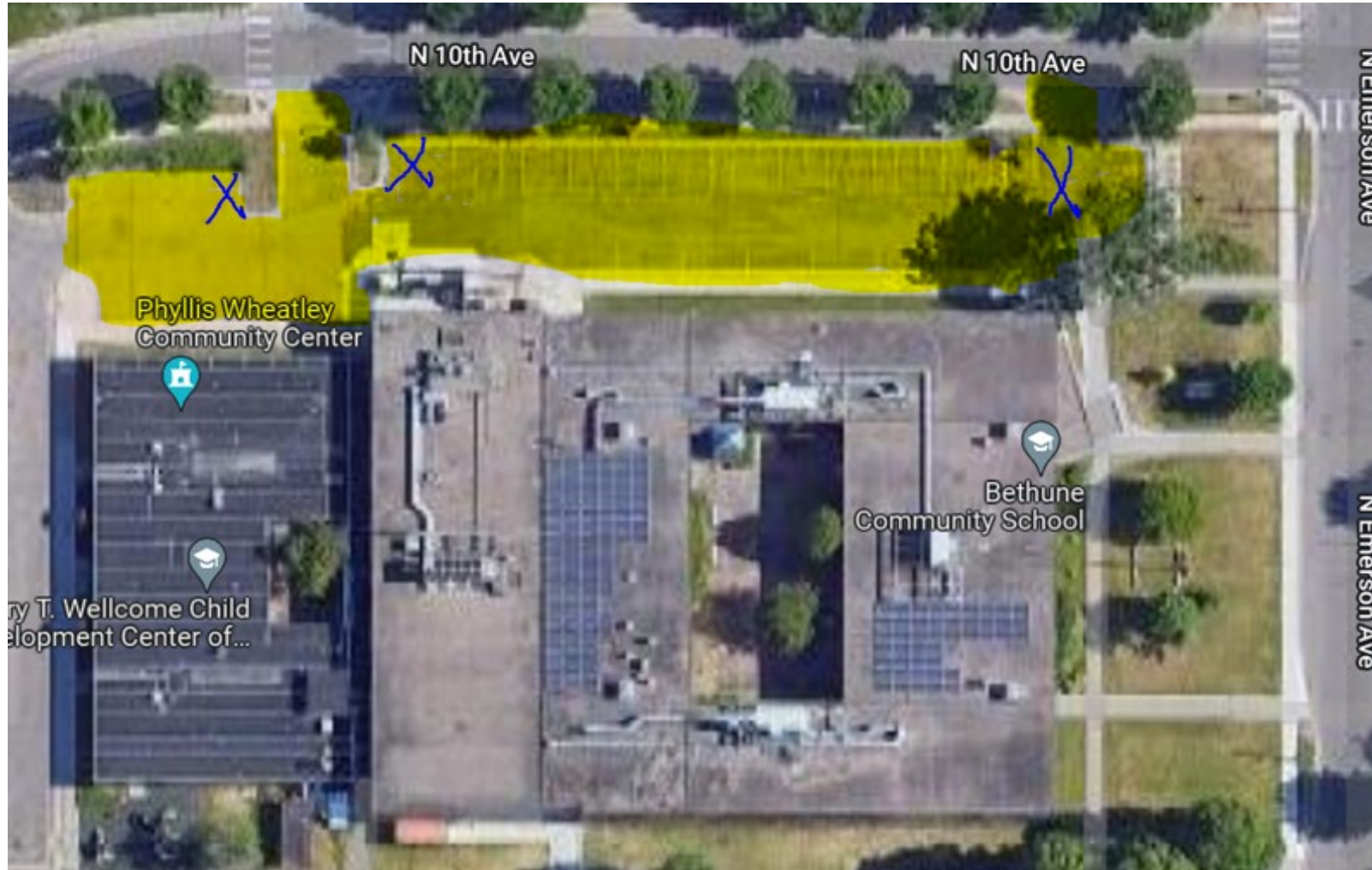
**Square Yards = 1,803**



Red or Yellow outline indicates areas to be plowed. The blue highlighted/X areas indicate where the snow should be piled.

**Area D – Bethune, 919 Emerson Avenue N, Minneapolis**

**Square Yards = 2,281**



Red or Yellow outline indicates areas to be plowed. The blue highlighted/X areas indicate where the snow should be piled.



**Area D – Camden/Henry, 4320 Newton Avenue North, Minneapolis**

**Square Yards = 9,451**



Red or Yellow outline indicates areas to be plowed. The blue highlighted/X areas indicate where the snow should be piled.



MINNEAPOLIS  
PUBLIC SCHOOLS  
Urban Education. Global Citizens.

RFP \_\_-\_\_ Snow Removal  
Appendix 4 - Pricing  
District Parking Lot Maps

Area D – Cityview, 3350 4<sup>th</sup> Street N, Minneapolis

Square Yards = 5,340

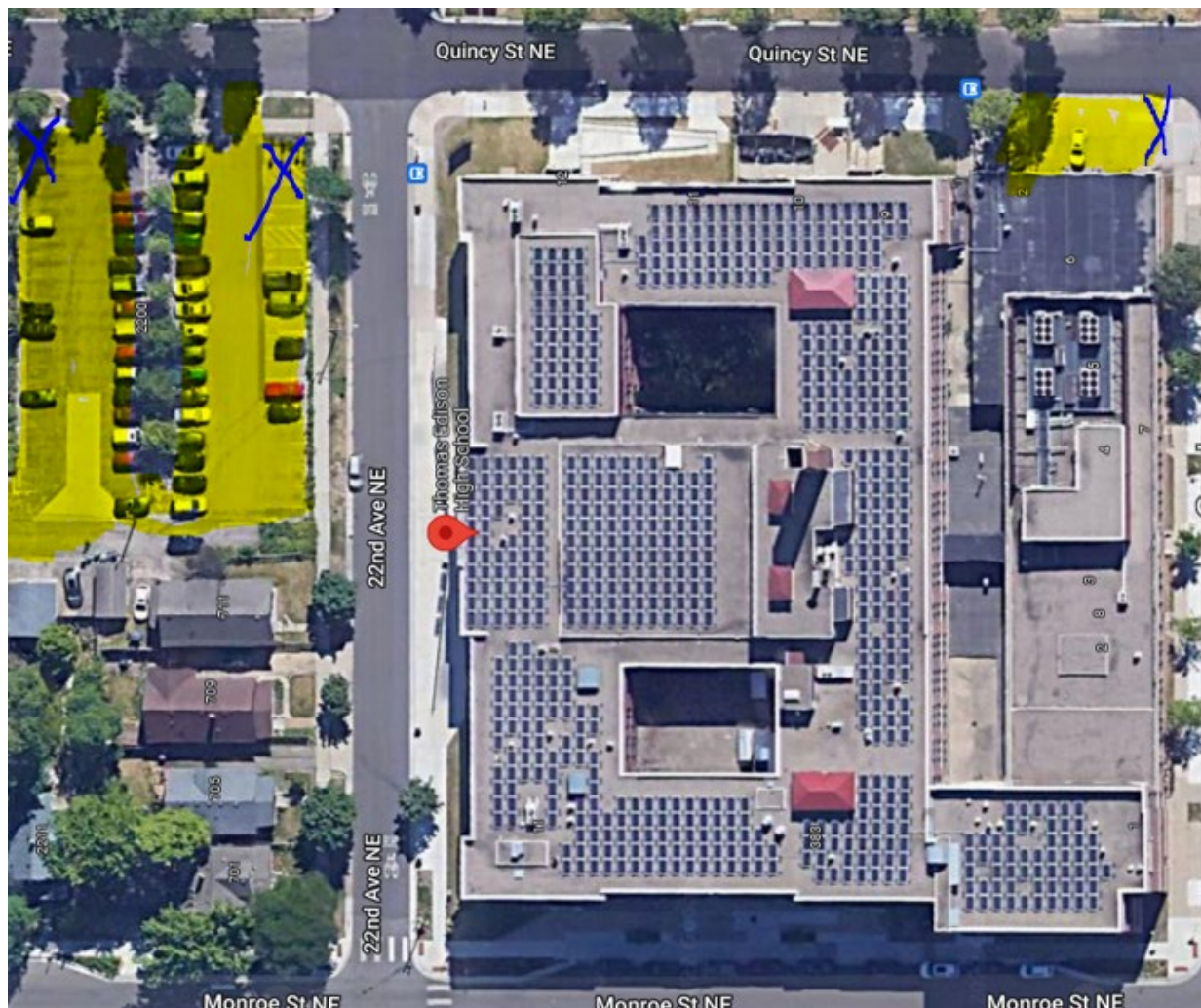


Red or Yellow outline indicates areas to be plowed. The blue highlighted/X areas indicate where the snow should be piled.



**Area D – Edison, 700 22<sup>nd</sup> Avenue NE, Minneapolis**

**Square Yards = 2,180**



Red or Yellow outline indicates areas to be plowed. The blue highlighted/X areas indicate where the snow should be piled.

**Area D – Franklin, 1501 Aldrich Avenue North, Minneapolis**

**Square Yards = 6,937**

*Franklin is next to Hall*



Red or Yellow outline indicates areas to be plowed. The blue highlighted/X areas indicate where the snow should be piled.



**Area D – Hall, 1601 Aldrich Avenue N, Minneapolis**

**Square Yards = 3,871**

*Hall is next to Franklin*



Red or Yellow outline indicates areas to be plowed. The blue highlighted/X areas indicate where the snow should be piled.

**Area D – Jenny Lind, 5025 Bryant Avenue N, Minneapolis**

**Square Yards = 6,573**

*Olson is a few blocks west from Jenny Lind*



Red or Yellow outline indicates areas to be plowed. The blue highlighted/X areas indicate where the snow should be piled.



**Area D – Las Estrellas/Sheridan, 1201 University Avenue NE, Minneapolis**

**Square Yards = 4,681**



Red or Yellow outline indicates areas to be plowed. The blue highlighted/X areas indicate where the snow should be piled.

**Area D – Loring, 2600 44<sup>th</sup> Avenue N, Minneapolis**

**Square Yards = 1,455**



Red or Yellow outline indicates areas to be plowed. The blue highlighted/X areas indicate where the snow should be piled.



**Area D – Marcy, 415 Fourth Avenue SE, Minneapolis**

**Square Yards = 588**



Red or Yellow outline indicates areas to be plowed. The blue highlighted/X areas indicate where the snow should be piled.

**Area D – Northeast, 1830 St. Anthony Parkway, Minneapolis**

**Square Yards = 5,915**



Red or Yellow outline indicates areas to be plowed. The blue highlighted/X areas indicate where the snow should be piled.



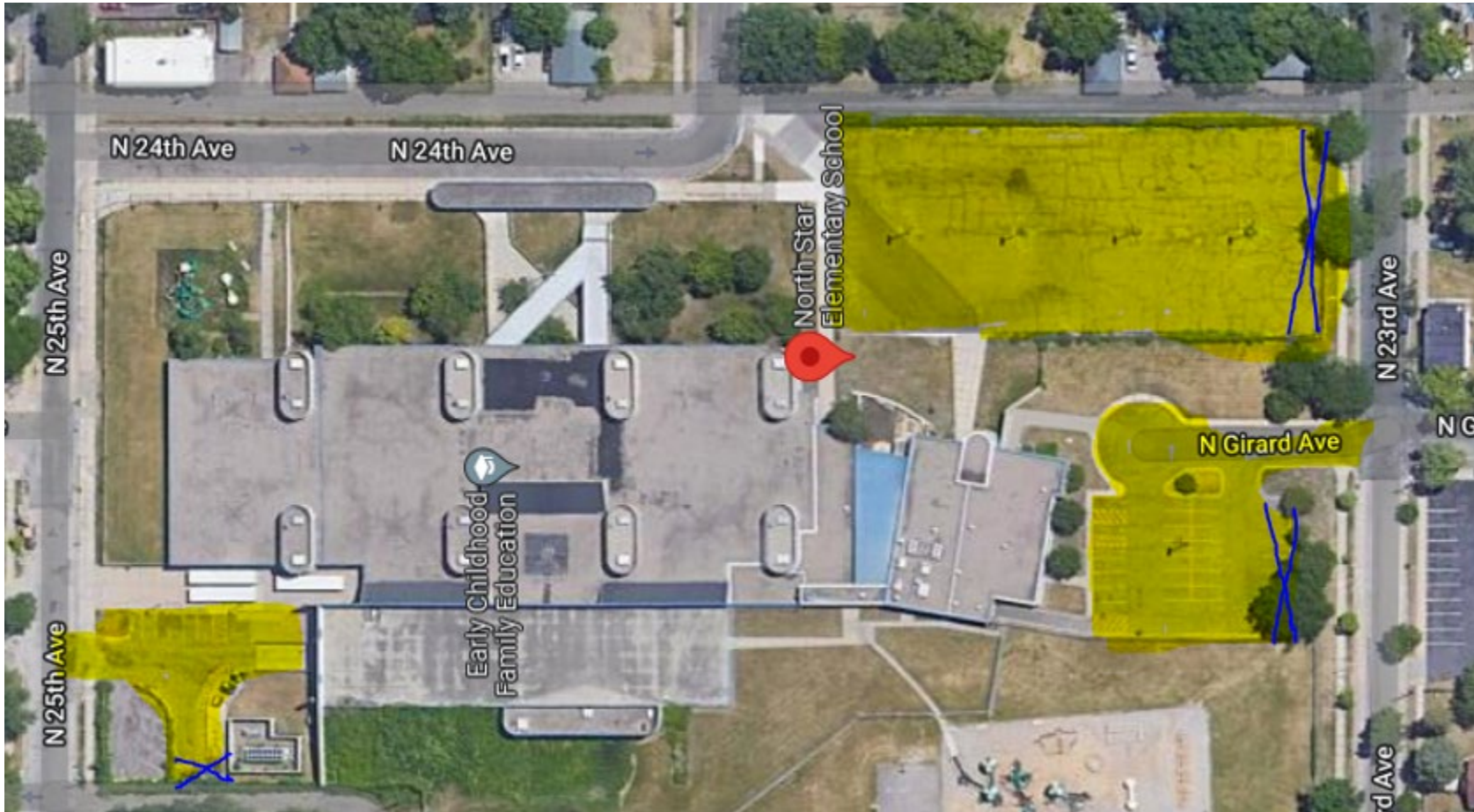


MINNEAPOLIS  
PUBLIC SCHOOLS  
Urban Education. Global Citizens.

RFP \_\_-\_\_ Snow Removal  
Appendix 4 - Pricing  
District Parking Lot Maps

Area D – North Star, 2410 Girard Avenue N, Minneapolis

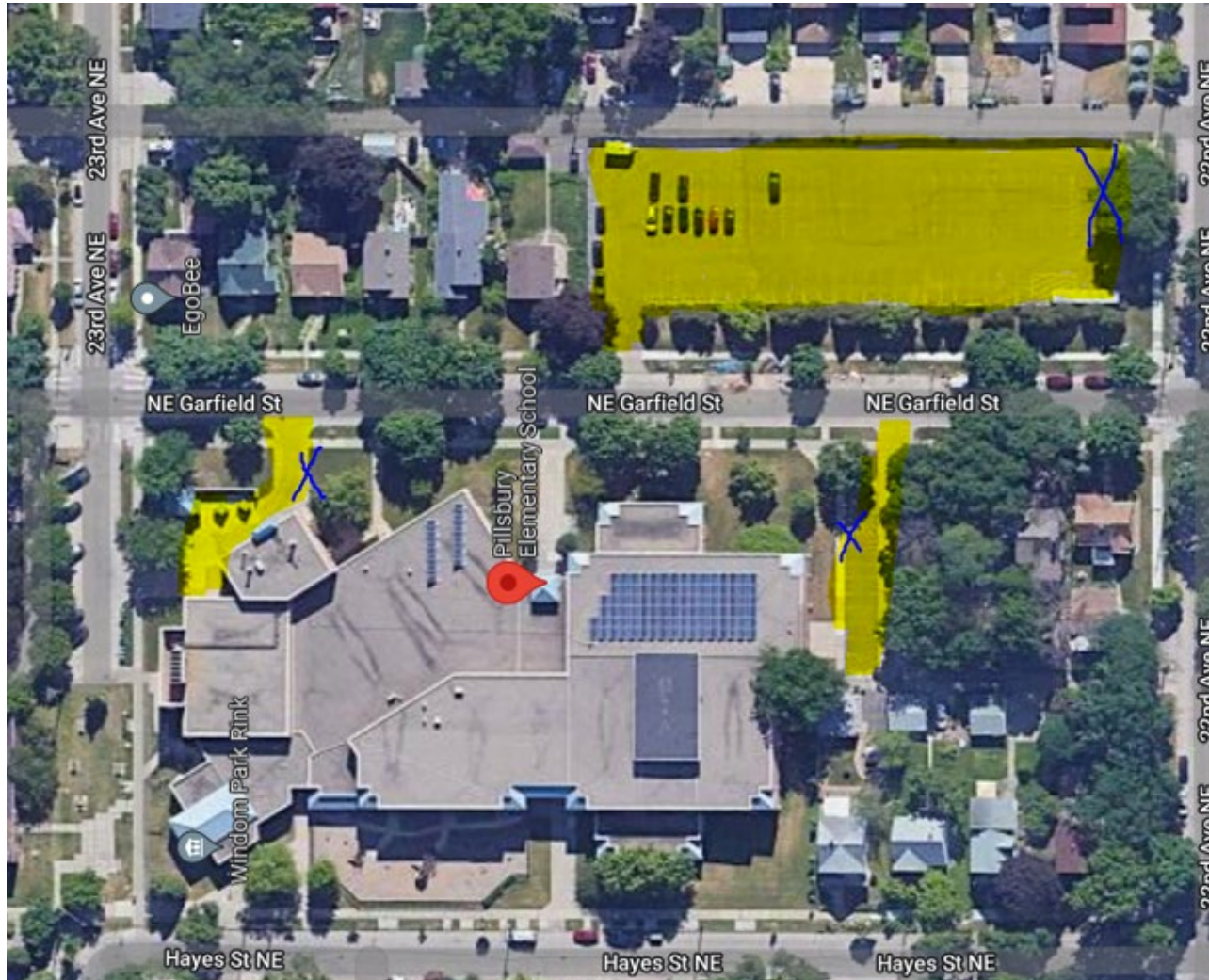
Square Yards = 8,227



Red or Yellow outline indicates areas to be plowed. The blue highlighted/X areas indicate where the snow should be piled.

**Area D – Pillsbury, 2250 Garfield Street NE, Minneapolis**

**Square Yards = 4,599**



Red or Yellow outline indicates areas to be plowed. The blue highlighted/X areas indicate where the snow should be piled.



**Area D – Olson, 1607 51<sup>st</sup> Avenue North, Minneapolis**

**Square Yards = 3,840**

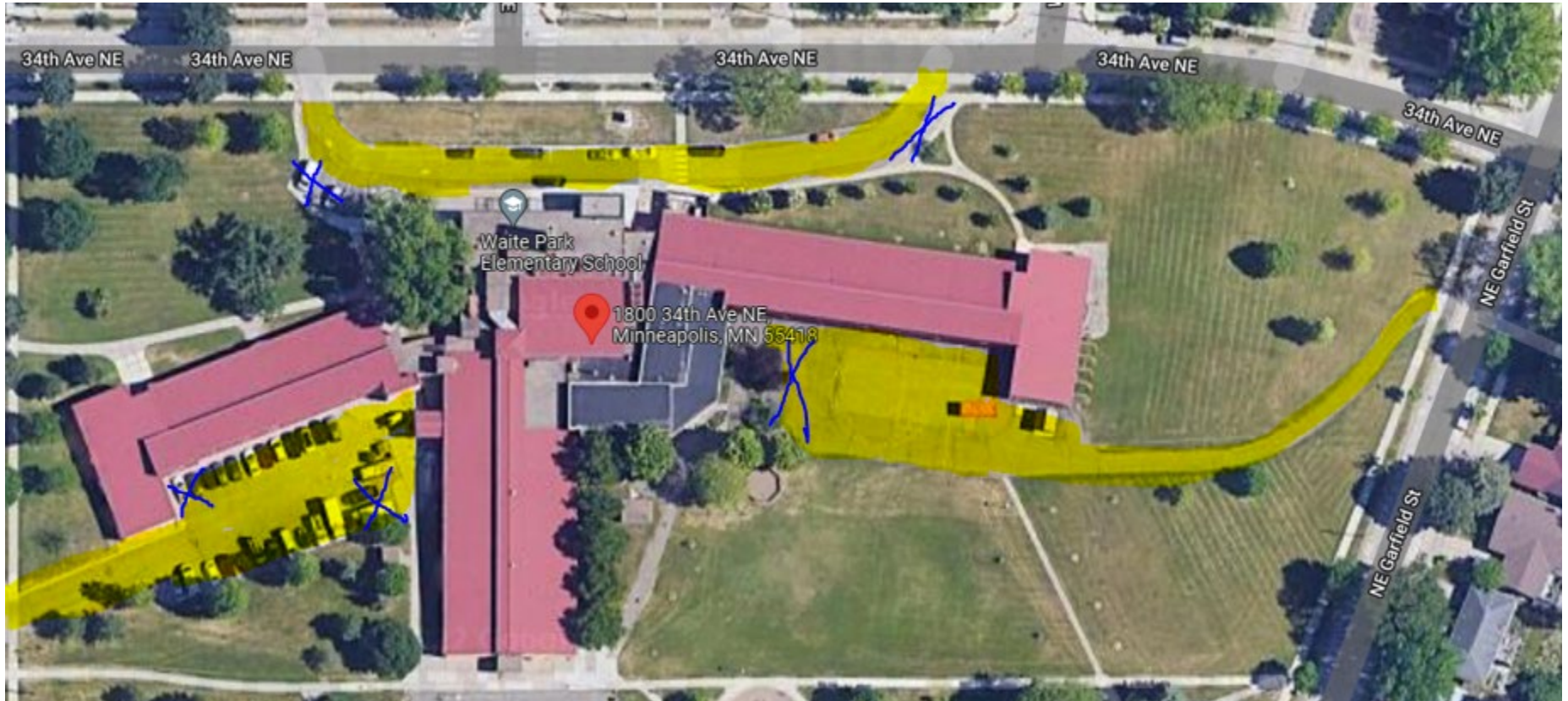
*Olson is a few blocks west from Jenny Lind*



Red or Yellow outline indicates areas to be plowed. The blue highlighted/X areas indicate where the snow should be piled.

**Area D – Waite Park, 1800 34<sup>th</sup> Avenue NE, Minneapolis**

**Square Yards = 2,514**



Red or Yellow outline indicates areas to be plowed. The blue highlighted/X areas indicate where the snow should be piled.





MINNEAPOLIS  
PUBLIC SCHOOLS  
Urban Education. Global Citizens.

RFP \_\_-\_\_ Snow Removal  
Appendix 4 - Pricing  
District Parking Lot Maps

Area D – Webster, 425 5<sup>th</sup> St NE, Minneapolis

Square Yards = 4,815



Red or Yellow outline indicates areas to be plowed. The blue highlighted/X areas indicate where the snow should be piled.