

LEA Name : Pottsville Area SD
Address : 1501 W Laurel Blvd
Pottsville, PA 17901

County : Schuylkill
AUN Number : 129546103
LEA Type : SD

Annual Financial Report Accuracy Certification Statement

For Fiscal Year Ending
6/30/2024

Pennsylvania Department of Education
&
Office of Comptroller Operations

PDE-2056: Intermediate Unit
PDE-2057: School District, AVTS/CTC, Charter School,
and Special Program Jointure


CERTIFICATION: By signing this page I agree that the electronic data submitted is a complete and accurate statement of the financial operations and status of the local education agency for the fiscal year. It has been prepared in accordance with generally accepted accounting principles and established Commonwealth of PA reporting guidelines.



Chief School Administrator Signature

11-14-24

Date



Board Secretary Signature

11-14-24

Date

Stephanie Wood

Contact Person

(570)621-2004 Ext :

Contact Person Telephone Number

swood@pottsville.k12.pa.us

Contact Person E-mail Address

Contact Person Fax Number

Audit Certification
Annual Financial Report:
For Fiscal Year Ending **6/30/2024**
(Pursuant to PA School Code Section 218(b))

LEA Name : Pottsville Area SD
AUN Number : 129546103
County : Schuylkill

Audit Certification Due: 12/31/2024

This certification is applicable to the Annual Financial Report data submitted through the Consolidated Financial Reporting System (CFRS).

CERTIFICATION: By signing this page I agree that the financial statements of the school have been properly audited as noted above pursuant to Article XXIV, and in the auditor's professional opinion, the Annual Financial Report (PDE-2057) submitted through CFRS is materially consistent with the audited financial statements.

Chief School Administrator

Laurel Yoder
Signature

11-14-24
Date

Board Secretary

KM Swan
Signature

11-14-24
Date

Stephanie Wood

Contact Person

swood@pottsville.k12.pa.us

Contact Person E-mail Address

(570)621-2004

Ext :

Contact Person Telephone Number

Contact Person Fax Number

Audit Certification
Annual Financial Report:
For Fiscal Year Ending **6/30/2024**
(Pursuant to PA School Code Section 218(b))

LEA Name : Pottsville Area SD
AUN Number : 129546103
County : Schuylkill

Audit Certification Due: 12/31/2024

This certification is applicable to the Annual Financial Report data submitted through the Consolidated Financial Reporting System (CFRS).

CERTIFICATION: By signing this page I agree that the financial statements of the school have been properly audited as noted above pursuant to Article XXIV, and in the auditor's professional opinion, the Annual Financial Report (PDE-2057) submitted through CFRS is materially consistent with the audited financial statements.

Chief School Administrator

Board Secretary

Signature

Date

Signature

Date

Stephanie Wood

(570)621-2004 Ext :

Contact Person

Contact Person Telephone Number

swood@pottsville.k12.pa.us

Contact Person E-mail Address

Contact Person Fax Number

LEA Name : Pottsville Area SD
Address : 1501 W Laurel Blvd
Pottsville , PA 17901

County : Schuylkill
AUN Number : 129546103
LEA Type : SD

Annual Financial Report Accuracy Certification Statement

For Fiscal Year Ending

6/30/2024

Pennsylvania Department of Education

&

Office of Comptroller Operations

PDE-2056: Intermediate Unit

PDE-2057: School District, AVTS/CTC, Charter School,
and Special Program Jointure

CERTIFICATION: By signing this page I agree that the electronic data submitted is a complete and accurate statement of the financial operations and status of the local education agency for the fiscal year. It has been prepared in accordance with generally accepted accounting principles and established Commonwealth of PA reporting guidelines.

Chief School Administrator Signature

Date

Board Secretary Signature

Date

Stephanie Wood

Contact Person

swood@pottsville.k12.pa.us

Contact Person E-mail Address

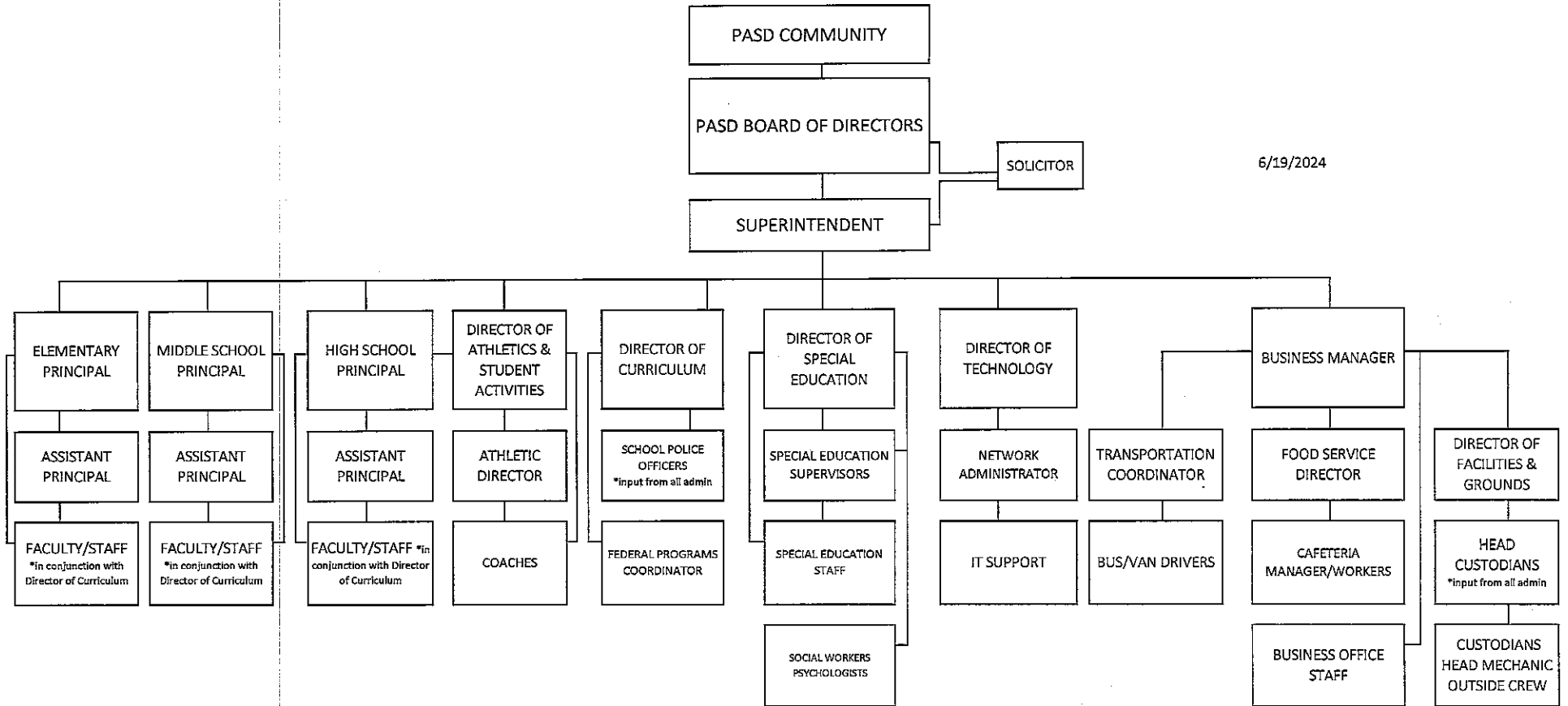
(570)621-2004

Ext :

Contact Person Telephone Number

Contact Person Fax Number

PASD
ORGANIZATIONAL
FLOW CHART



6/19/2024



Book	Policy Manual
Section	600 Finances
Title	GASB Statement 34
Code	622
Status	Active
Adopted	October 13, 2021

Purpose

The Board recognizes the need to implement the required accounting and financial reporting standards stipulated by the Pennsylvania Department of Education.

The primary objectives of implementing the Governmental Accounting Standards Board (GASB) Statement 34 are to assure compliance with state requirements, and properly account for both the financial and economic resources of the district.

Authority

Participation of the school district in any such activity shall be in accordance with Board policy.[1]
[2]

Delegation of Responsibility

The responsibility to coordinate the compilation and preparation of all information necessary to implement this policy is delegated to the Business Manager.

The designated individual shall be responsible for implementing the necessary procedures to establish and maintain a fixed asset inventory, including depreciation schedules. Depreciation shall be computed on a straight-line basis over the useful lives of the assets, using an averaging convention. Normal maintenance and repairs shall be charged to expense as incurred; major renewals and betterments that materially extend the life or increase the value of the asset shall be capitalized. A schedule of accumulated depreciation shall be consistent from year to year. The basis for depreciation, including groups of assets and useful lives, shall be in writing and submitted for review to the Board.

The Business Manager shall prepare the required Management Discussion and Analysis (MD&A). The MD&A shall be in the form required by GASB Statement 34 and shall be submitted to the Board for approval, prior to publication.

Prior to submission of the MD&A for Board approval, the district's independent auditors shall review the MD&A, in accordance with SAS No. 52, "Required Supplementary Information".

Legal 1. 24 P.S. 218

2. 24 P.S. 613

Governmental Accounting Standards Board, Statement No. 34

<u>Val Number</u>	<u>Description</u>	<u>Justification</u>
30116	Revenue Detail: A large amount has been reported as Earnings on Investments in Fund 32, account 6500, which should only include interest and/or dividend earnings. Correct or provide a brief explanation of the revenue reported. Revenue Detail 6500, Fund 32: \$98,231.00	This amount is correct. The District had investments in Treasury Bills with high interest rates. This amount is the interest earned.

Amounts Expressed in Whole Dollars	<u>General Fund</u> (10)	<u>Student Sponsored</u> <u>Activity Fund</u> (21)	<u>Public Purpose Trust</u> (27)	<u>Other Compt Approved</u> (28)	<u>Athletic / Activity</u> (29)
Assets And Deferred Outflows Of Resources					
Assets					
0100 Cash and Cash Equivalents	9,435,491				
0110 Investments	16,170,005				
0120 Taxes Receivable	4,212,980				
0130 Due From Other Funds	293,556				
0141 Due From Other Governments					
0142 State Revenue Receivable					
0143 Federal Revenue Receivable					
0145 Other Intergovernmental Revenue Receivable	2,941,987				
0146 Due from Primary Government					
0147 Due from Component Unit					
0150 Other Receivables	1,271				
0170 Inventories					
0180 Prepaid Expenses (Expenditures)					
0190 Other Current Assets					
Total Assets	\$33,055,290				
0910 Deferred Outflows of Resources					
Total Assets And Deferred Outflows Of Resources	\$33,055,290				

Amounts Expressed in Whole Dollars	<u>Capital Reserve (690.</u> <u>1850)</u> <u>(31)</u>	<u>Capital Reserve (1431)</u> <u>(32)</u>	<u>Other Capital Projects</u> <u>Fund</u> <u>(39)</u>	<u>Debt Service</u> <u>(40)</u>	<u>Permanent</u> <u>(90)</u>
Assets And Deferred Outflows Of Resources					
Assets					
0100 Cash and Cash Equivalents			2,671,672		
0110 Investments					
0120 Taxes Receivable					
0130 Due From Other Funds					
0141 Due From Other Governments					
0142 State Revenue Receivable					
0143 Federal Revenue Receivable					
0145 Other Intergovernmental Revenue Receivable					
0146 Due from Primary Government					
0147 Due from Component Unit					
0150 Other Receivables					
0170 Inventories					
0180 Prepaid Expenses (Expenditures)					
0190 Other Current Assets					
Total Assets			\$2,671,672		
0910 Deferred Outflows of Resources					
Total Assets And Deferred Outflows Of Resources			\$2,671,672		

Amounts Expressed in Whole Dollars	<u>Total Governmental Funds</u>
Assets And Deferred Outflows Of Resources	
Assets	
0100 Cash and Cash Equivalents	12,107,163
0110 Investments	16,170,005
0120 Taxes Receivable	4,212,980
0130 Due From Other Funds	293,556
0141 Due From Other Governments	
0142 State Revenue Receivable	
0143 Federal Revenue Receivable	
0145 Other Intergovernmental Revenue Receivable	2,941,987
0146 Due from Primary Government	
0147 Due from Component Unit	
0150 Other Receivables	1,271
0170 Inventories	
0180 Prepaid Expenses (Expenditures)	
0190 Other Current Assets	
Total Assets	\$35,726,962
0910 Deferred Outflows of Resources	
Total Assets And Deferred Outflows Of Resources	\$35,726,962

Amounts Expressed in Whole Dollars	<u>General Fund</u> (10)	<u>Student Sponsored</u> <u>Activity Fund</u> (21)	<u>Public Purpose Trust</u> (27)	<u>Other Compt Approved</u> (28)	<u>Athletic / Activity</u> (29)
Liabilities And Deferred Inflows Of Resources And Fund Balances					
Liabilities					
0400 Due to Other Funds	595,494				
0411 Due to Other Governments					
0412 Due to Primary Government					
0413 Due to Component Unit					
0420 Accounts Payable	920,590				
0430 Contracts Payable					
0440 Current Portion of Long-Term Debt					
0450 Short-Term Payables					
0461 Accrued Salaries and Benefits	4,577,708				
0462 Payroll Deductions and Withholding					
0480 Unearned Revenues					
0490 Other Current Liabilities					
Total Liabilities	\$6,093,792				
0950 Deferred Inflows of Resources	3,270,693				
Fund Balances					
0810 Nonspendable Fund Balance					
0820 Restricted Fund Balance	917,792				
0830 Committed Fund Balance	18,839,402				
0840 Assigned Fund Balance					
0850 Unassigned Fund Balance	3,933,611				
Total Fund Balances	\$23,690,805				
Total Liabilities, Deferred Inflows Of Resources And Fund Balances	\$33,055,290				

Amounts Expressed in Whole Dollars

	<u>Capital Reserve (690)</u> <u>1850</u> <u>(31)</u>	<u>Capital Reserve (1431)</u> <u>(32)</u>	<u>Other Capital Projects</u> <u>Fund</u> <u>(39)</u>	<u>Debt Service</u> <u>(40)</u>	<u>Permanent</u> <u>(90)</u>
Liabilities And Deferred Inflows Of Resources And Fund Balances					
Liabilities					
0400 Due to Other Funds					
0411 Due to Other Governments					
0412 Due to Primary Government					
0413 Due to Component Unit					
0420 Accounts Payable					
0430 Contracts Payable					
0440 Current Portion of Long-Term Debt					
0450 Short-Term Payables					
0461 Accrued Salaries and Benefits					
0462 Payroll Deductions and Withholding					
0480 Unearned Revenues					
0490 Other Current Liabilities					
Total Liabilities					
0950 Deferred Inflows of Resources					
Fund Balances					
0810 Nonspendable Fund Balance					
0820 Restricted Fund Balance			2,671,672		
0830 Committed Fund Balance					
0840 Assigned Fund Balance					
0850 Unassigned Fund Balance					
Total Fund Balances			\$2,671,672		
Total Liabilities, Deferred Inflows Of Resources And Fund Balances			\$2,671,672		

Amounts Expressed in Whole Dollars

Total Governmental Funds

Liabilities And Deferred Inflows Of Resources And Fund Balances

Liabilities

0400 Due to Other Funds	595,494
0411 Due to Other Governments	
0412 Due to Primary Government	
0413 Due to Component Unit	
0420 Accounts Payable	920,590
0430 Contracts Payable	
0440 Current Portion of Long-Term Debt	
0450 Short-Term Payables	
0461 Accrued Salaries and Benefits	4,577,708
0462 Payroll Deductions and Withholding	
0480 Unearned Revenues	
0490 Other Current Liabilities	

Total Liabilities **\$6,093,792**

0950 Deferred Inflows of Resources 3,270,693

Fund Balances

0810 Nonspendable Fund Balance	
0820 Restricted Fund Balance	3,589,464
0830 Committed Fund Balance	18,839,402
0840 Assigned Fund Balance	
0850 Unassigned Fund Balance	3,933,611

Total Fund Balances **\$26,362,477**

Total Liabilities, Deferred Inflows Of Resources And Fund Balances **\$35,726,962**

Amounts Expressed in Whole Dollars	<u>General Fund</u> (10)	<u>Student Sponsored</u> <u>Activity Fund</u> (21)	<u>Public Purpose Trust</u> (27)	<u>Other Compt Approved</u> (28)	<u>Athletic / Activity</u> (29)
Revenues					
6000 Revenue from Local Sources	21,217,864				
7000 Revenue from State Sources	27,918,067				
8000 Revenue from Federal Sources	2,734,011				
Total Revenues	\$51,869,942				
Expenditures					
1000 Instruction	28,809,264				
2000 Support Services	12,653,348				
3000 Operation of Non-Instructional Services	1,059,547				
4000 Facilities Acquisition, Construction and Improvement Services	1,899,271				
5110 Debt Service	1,319,468				
5130 Refund of Prior Year Revenues / Receipts					
5140 Leases and Other Right-to-Use Arrangements	245,100				
Total Expenditures	\$45,985,998				
Excess (Deficiency) Of Revenues Over Expenditures	\$5,883,944				
Other Financing Sources (Uses)					
9110 Face Value of Bonds Issued					
9120 Proceeds from Refunding of Bonds					
9130 Bond Premiums					
9200 Proceeds from Extended Term Financing, Leases, and Other Right-to-Use Arrangements	50,674				
9300 Interfund Transfers - IN					
9400 Sale of or Compensation for Loss of Fixed Assets	240,516				
9710 Transfers from Component Units					
9720 Transfers from Primary Governments					
9910 Other Financing Sources Not Listed in the 9000 Series					
9990 Insurance Recoveries	5,680				
5120 Debt Service – Refunded Bonds					
5150 Bond Discounts					
5200 Interfund Transfers – Out	750,000				
5300 Transfers Out to Component Units/Primary Governments					
Total Other Financing Sources (Uses)	(\$453,130)				

Amounts Expressed in Whole Dollars	<u>Capital Reserve (690-1850)</u> <u>(31)</u>	<u>Capital Reserve (1431)</u> <u>(32)</u>	<u>Other Capital Projects</u> <u>Fund</u> <u>(39)</u>	<u>Debt Service</u> <u>(40)</u>	<u>Permanent</u> <u>(90)</u>
Revenues					
6000 Revenue from Local Sources			98,231		
7000 Revenue from State Sources					
8000 Revenue from Federal Sources					
Total Revenues			\$98,231		
Expenditures					
1000 Instruction					
2000 Support Services					
3000 Operation of Non-Instructional Services					
4000 Facilities Acquisition, Construction and Improvement Services					
5110 Debt Service					
5130 Refund of Prior Year Revenues / Receipts					
5140 Leases and Other Right-to-Use Arrangements					
Total Expenditures					
Excess (Deficiency) Of Revenues Over Expenditures			\$98,231		
Other Financing Sources (Uses)					
9110 Face Value of Bonds Issued					
9120 Proceeds from Refunding of Bonds					
9130 Bond Premiums					
9200 Proceeds from Extended Term Financing, Leases, and Other Right-to-Use Arrangements					
9300 Interfund Transfers - IN			750,000		
9400 Sale of or Compensation for Loss of Fixed Assets					
9710 Transfers from Component Units					
9720 Transfers from Primary Governments					
9910 Other Financing Sources Not Listed in the 9000 Series					
9990 Insurance Recoveries					
5120 Debt Service – Refunded Bonds					
5150 Bond Discounts					
5200 Interfund Transfers – Out					
5300 Transfers Out to Component Units/Primary Governments					
Total Other Financing Sources (Uses)			\$750,000		

Amounts Expressed in Whole Dollars	<u>Total Governmental Funds</u>
Revenues	
6000 Revenue from Local Sources	21,316,095
7000 Revenue from State Sources	27,918,067
8000 Revenue from Federal Sources	2,734,011
Total Revenues	\$51,968,173
Expenditures	
1000 Instruction	28,809,264
2000 Support Services	12,653,348
3000 Operation of Non-Instructional Services	1,059,547
4000 Facilities Acquisition, Construction and Improvement Services	1,899,271
5110 Debt Service	1,319,468
5130 Refund of Prior Year Revenues / Receipts	
5140 Leases and Other Right-to-Use Arrangements	245,100
Total Expenditures	\$45,985,998
Excess (Deficiency) Of Revenues Over Expenditures	\$5,982,175
Other Financing Sources (Uses)	
9110 Face Value of Bonds Issued	
9120 Proceeds from Refunding of Bonds	
9130 Bond Premiums	
9200 Proceeds from Extended Term Financing, Leases, and Other Right-to-Use Arrangements	50,674
9300 Interfund Transfers - IN	750,000
9400 Sale of or Compensation for Loss of Fixed Assets	240,516
9710 Transfers from Component Units	
9720 Transfers from Primary Governments	
9910 Other Financing Sources Not Listed in the 9000 Series	
9990 Insurance Recoveries	5,680
5120 Debt Service – Refunded Bonds	
5150 Bond Discounts	
5200 Interfund Transfers – Out	750,000
5300 Transfers Out to Component Units/Primary Governments	
Total Other Financing Sources (Uses)	\$296,870

Amounts Expressed in Whole Dollars

	<u>General Fund</u> (10)	<u>Student Sponsored</u> <u>Activity Fund</u> (21)	<u>Public Purpose Trust</u> (27)	<u>Other Compt Approved</u> (28)	<u>Athletic / Activity</u> (29)
Special And Extraordinary Items					
9920 Special Items – Gains					
9930 Extraordinary Items – Gains					
5520 Special Items – Losses					
5530 Extraordinary Items – Losses					
Net Change In Fund Balances	\$5,430,814				
Fund Balance					
0001 Fund Balance - Beginning of Fiscal Year	18,259,991				
Fund Balance - End Of Year	\$23,690,805				

Amounts Expressed in Whole Dollars	<u>Capital Reserve (690, 1850) (31)</u>	<u>Capital Reserve (1431) (32)</u>	<u>Other Capital Projects Fund (39)</u>	<u>Debt Service (40)</u>	<u>Permanent (90)</u>
Special And Extraordinary Items					
9920 Special Items – Gains					
9930 Extraordinary Items – Gains					
5520 Special Items – Losses					
5530 Extraordinary Items – Losses					
Net Change In Fund Balances			\$848,231		
Fund Balance					
0001 Fund Balance - Beginning of Fiscal Year			1,823,441		
Fund Balance - End Of Year			\$2,671,672		

Amounts Expressed in Whole Dollars

Total Governmental Funds

Special And Extraordinary Items

9920 Special Items – Gains

9930 Extraordinary Items – Gains

5520 Special Items – Losses

5530 Extraordinary Items – Losses

Net Change In Fund Balances **\$6,279,045**

Fund Balance

0001 Fund Balance - Beginning of Fiscal Year 20,083,432

Fund Balance - End Of Year **\$26,362,477**

Amounts Expressed in Whole Dollars	<u>Food Service</u> (51)	<u>Child Care</u> <u>Operations</u> (52)	<u>Other Enterprise</u> (58)	<u>TOTAL</u>	<u>Internal Service</u> (60)
Assets And Deferred Outflows Of Resources					
Current Assets					
0100 Cash and Cash Equivalents	567,395			567,395	
0110 Investments					
0130 Due From Other Funds	595,494			595,494	
0141 Due From Other Governments					
0142 State Revenue Receivable					
0143 Federal Revenue Receivable					
0146 Due from Primary Government					
0147 Due from Component Unit					
0150 Other Receivables					
0170 Inventories	65,620			65,620	
0180 Prepaid Expenses (Expenditures)					
0190 Other Current Assets					
Total Current Assets	\$1,228,509			\$1,228,509	
Noncurrent Assets					
0211 Land					
0212 Site Improvements (Net)					
0220 Buildings and Building Improvements (Net)	6,677			6,677	
0230 Tangible Property and Intangible Right-To-Use Assets (Net)					
0250 Construction in Progress					
0260 Long Term Prepayments					
0290 Other Noncurrent Assets					
Total Noncurrent Assets	\$6,677			\$6,677	
0910 Deferred Outflows of Resources	102,239			102,239	
Total Assets And Deferred Outflows Of Resources	\$1,337,425			\$1,337,425	

Amounts Expressed in Whole Dollars	<u>Food Service</u> (51)	<u>Child Care</u> <u>Operations</u> (52)	<u>Other Enterprise</u> (58)	<u>TOTAL</u>	<u>Internal Service</u> (60)
Liabilities And Deferred Inflows Of Resources And Net Position					
Current Liabilities					
0400 Due to Other Funds	293,556			293,556	
0411 Due to Other Governments					
0413 Due to Component Unit					
0420 Accounts Payable	20,538			20,538	
0430 Contracts Payable					
0440 Current Portion of Long-Term Debt					
0450 Short-Term Payables					
0461 Accrued Salaries and Benefits	9,497			9,497	
0462 Payroll Deductions and Withholding					
0480 Unearned Revenues					
0490 Other Current Liabilities					
Total Current Liabilities	\$323,591			\$323,591	
Noncurrent Liabilities					
0510 Bonds Payable					
0520 Extended-Term Financing Agreements Payable					
0530 Lease and Other Right-To-Use Obligations					
0540 Accumulated Compensated Absences	7,375			7,375	
0550 Authority Lease Obligations					
0560 Other Post-Employment Benefits (OPEB)	88,962			88,962	
0570 Net Pension Liability	1,907,601			1,907,601	
0599 Other Noncurrent Liabilities					
Total Noncurrent Liabilities	\$2,003,938			\$2,003,938	
Total Liabilities	\$2,327,529			\$2,327,529	
0950 Deferred Inflows of Resources	213,283			213,283	
Net Position					
0791 Net Investment in Capital Assets	6,677			6,677	
0008 Restricted Net Position (0792 – 0798)	(1,210,064)			(1,210,064)	
0799 Unrestricted Net Position					
Total Net Position	(\$1,203,387)			(\$1,203,387)	
Total Liabilities And Deferred Inflows Of Resources And Net Position	\$1,337,425			\$1,337,425	

Amounts Expressed in Whole Dollars	<u>Food Service</u> (51)	<u>Child Care Operations</u> (52)	<u>Other Enterprise</u> (58)	<u>TOTAL</u>	<u>Internal Service</u> (60)
Operating Revenues					
6600 Food Service Revenue	432,158			432,158	
0071 Charges for Services					
0072 Other Operating Revenue	22,439			22,439	
Total Operating Revenues	\$454,597			\$454,597	
Operating Expenses					
100 Personnel Services – Salaries	688,657			688,657	
200 Personnel Services – Employee Benefits	370,329			370,329	
300 Purchased Professional and Technical Services					
400 Purchased Property Services					
500 Other Purchased Services	20,816			20,816	
600 Supplies	916,965			916,965	
740 Depreciation	1,459			1,459	
770 Amortization Expense					
810 Dues and Fees					
880 Refunds of Prior Years' Receipts					
890 Miscellaneous Expenditures	516			516	
Total Operating Expenses	\$1,998,742			\$1,998,742	
Operating Income (Loss)	(\$1,544,145)			(\$1,544,145)	
Non Operating Revenues (Expenses)					
6500 Earnings on Investments	10,205			10,205	
6830 Federal Revenue from Intermediary Sources					
6920 Contributions and Donations from Private Sources					
6930 Gains or Losses on Sale of Fixed Assets					
6991 Refunds of a Prior Year Expenditure					
7000 Revenue from State Sources	331,364			331,364	
8000 Revenue from Federal Sources	1,521,111			1,521,111	
9990 Insurance Recoveries					
820 Claims and Judgments Against the LEA					
830 Interest					
TOTAL Non Operating Revenues (Expenses)	\$1,862,680			\$1,862,680	
Income (Loss) Before Contributions And Transfers	\$318,535			\$318,535	

Amounts Expressed in Whole Dollars	<u>Food Service</u> (51)	<u>Child Care Operations</u> (52)	<u>Other Enterprise</u> (58)	<u>TOTAL</u>	<u>Internal Service</u> (60)
Contributions, Transfers, and Special and Extraordinary Items					
5200 Interfund Transfers – Out					
5300 Transfers Out to Component Units/Primary Governments					
5520 Special Items – Losses					
5530 Extraordinary Items – Losses					
9300 Interfund Transfers - IN					
9500 Capital Contributions					
9700 Transfers IN From Component Units/Primary Governments					
9920 Special Items – Gains					
9930 Extraordinary Items – Gains					
Change In Net Position		\$318,535		\$318,535	
0002 Net Position - Beginning of Fiscal Year		(1,521,922)		(1,521,922)	
0003 Accounting Changes / Residual Equity Transfers					
Net Position - End Of Year		(\$1,203,387)		(\$1,203,387)	

Amounts Expressed in Whole Dollars	<u>Food Service</u> (51)	<u>Child Care Operations</u> (52)	<u>Other Enterprise</u> (58)	<u>TOTAL</u>	<u>Internal Service(60)</u>
Cash Flows From Operating Activities					
0011 Cash Receipts From Users	454,597			454,597	
0012 Cash Receipts From Assessments Made to Other Funds					
0013 Cash Receipts From Earnings on Investments					
0014 Cash Receipts From Other Operating Revenue					
0015 Cash Payments To Employees For Services	1,058,986			1,058,986	
0016 Cash Payments For Insurance Claims					
0017 Cash Payments To Suppliers For Goods and Services	1,116,018			1,116,018	
0018 Cash Payments For Other Operating Expenses					
Net Cash Provided By (Used For) Operating Activities	(\$1,720,407)			(\$1,720,407)	
Cash Flows From Non-Capital Financing Activities					
0021 Receipts From Local Sources - 6000					
0022 Receipts From State Sources - 7000	331,364			331,364	
0023 Receipts From Federal Sources -8000	1,521,111			1,521,111	
0024 Notes and Loans Received (Repaid)					
0025 Interest Paid on Notes/Loans - 5100-830					
0026 Operating Transfers In (Out)/Residual Equity Trans					
0027 Operating Transfers In (Out) Primary Government / Comp Unit					
0028 Receipts From Refund of Prior Year Expenditures - 6991					
0029 Special and Extraordinary Gains (losses)					
0030 Receipts from Insurance Recoveries -9990					
Net Cash Prov By (Used for) Non-Capital Financing Activities	\$1,852,475			\$1,852,475	
Cash Flows From Capital and Related Financing Activities					
0031 Payments For Fac Acq, Const, and Imp - 4000					
0032 Proceeds from Disposal of Capital Assets					
0033 Proceeds From Extended Term Financing - 9200					
0034 Principal Paid on Financing Agreements					
0035 Interest Paid on Financing Agreements - 5100-830					
0036 (Inc) Dec in Contributed Capital					
Net Cash Prov By (Used for) Capital and Related Financing Activities					
Cash Flows From Investing Activities					
0041 Earnings on Investments - 6500	10,205			10,205	
0042 Purchase of Inv Securities / Deposits to Inv Pools					
0043 Receipts From Investment Pool Withdrawals					
0044 Proceeds from Sale and Maturity of Inv Securities					

LEA : 129546103 Pottsville Area SD

Printed 11/8/2024 3:13:49 PM

0045 Loans Received (Paid)

Net Cash Prov By (Used for) Investing Activities	\$10,205	\$10,205
---	-----------------	-----------------

	<u>Food Service</u> (51)	<u>Child Care Operations</u> (52)	<u>Other Enterprise</u> (58)	<u>TOTAL</u>	<u>Internal Service</u> (60)
Net Increase (Decrease) in Cash Flows	142,273			142,273	
0004 Cash and Cash Equivalents Beginning of Year					
Cash and Cash Equivalents at Year End	\$142,273			\$142,273	
<hr/>					
Reconciliation of Operating Income (Loss) To Net Cash Provided by (Used For) Operating Activities					
0005 Operating Income (Loss) per REP	(1,544,145)			(1,544,145)	
Adjustments					
0051 Depreciation and Net Amortization	1,459			1,459	
0052 Provision for Uncollectible Accounts	(147,092)			(147,092)	
0053 Other Adjustments					
Effect of Changes in Assets, Liabilities, Deferred Outflows and Deferred Inflows					
0054 (Inc) Dec In Accounts Receivable (0120-0150)	12,372			12,372	
0055 Advances to Other Funds					
0056 (Inc) Dec in Inventories (0170)	(7,148)			(7,148)	
0057 (Inc) Dec in Prepaid Expenses (0180)	99,432			99,432	
0058 (Inc) Dec in Other Current or Noncurrent Assets					
0064 Deferred Outflows (0910)	(23,652)			(23,652)	
0059 Inc (Dec) in Accounts Payable (0400-0450)	15,136			15,136	
0060 Inc (Dec) in Accrued Salaries/Benefits (0461)	4,188			4,188	
0065 Inc (Dec) in Net Pension Liabilities (0570)	6,589			6,589	
0066 Inc (Dec) in Other Postemp Benefit Oblig (0560)	(1,025)			(1,025)	
0061 Inc (Dec) in Payroll Deductions/Withholding (0462)					
0062 Inc (Dec) in Unearned Revenue (0480)					
0063 Inc (Dec) in Other Current or Noncurrent Liabilities					
0067 Deferred Inflows (0950)	(136,521)			(136,521)	
Total Adjustments	(\$176,262)			(\$176,262)	
Cash Provided By (Used for) Total	(\$1,720,407)			(\$1,720,407)	

COMBINED STATEMENT OF CASH FLOWS
SCHEDULE OF NONCASH INVESTING, CAPITAL, AND FINANCING ACTIVITIES

Explanation of Transaction and Balance Sheet Effect	Amount
Total	

LEA : 129546103 Pottsville Area SD

Printed 11/8/2024 3:13:51 PM

Amounts Expressed in Whole Dollars	<u>Private Purpose Trust</u> (71)	<u>Investment Trust</u> (72)	<u>Pension Trust</u> (73)	<u>Student Activity Custodial</u> (81)
Assets And Deferred Outflows Of Resources				
Assets				
0100 Cash and Cash Equivalents	20,070			
0110 Investments				
0130 Due From Other Funds				
0140 Due from Other Governments, Primary Government and Component Units				
0150 Other Receivables				
0170 Inventories				
0180 Prepaid Expenses (Expenditures)				
0190 Other Current Assets				
0220 Buildings and Building Improvements (Net)				
0230 Tangible Property and Intangible Right-To-Use Assets (Net)				
Total Assets	\$20,070			
0910 Deferred Outflows of Resources				
Total Assets And Deferred Outflows Of Resources	\$20,070			

LEA : 129546103 Pottsville Area SD

Printed 11/8/2024 3:13:51 PM

Amounts Expressed in Whole Dollars	<u>Other Custodial</u> (89)	<u>Fiduciary Component Units</u> (98)	<u>Total Fiduciary Funds</u>
Assets And Deferred Outflows Of Resources			
Assets			
0100 Cash and Cash Equivalents	416,742		436,812
0110 Investments			
0130 Due From Other Funds			
0140 Due from Other Governments, Primary Government and Component Units			
0150 Other Receivables			
0170 Inventories			
0180 Prepaid Expenses (Expenditures)			
0190 Other Current Assets			
0220 Buildings and Building Improvements (Net)			
0230 Tangible Property and Intangible Right-To-Use Assets (Net)			
Total Assets	\$416,742		\$436,812
0910 Deferred Outflows of Resources			
Total Assets And Deferred Outflows Of Resources	\$416,742		\$436,812

LEA : 129546103 Pottsville Area SD

Printed 11/8/2024 3:13:51 PM

Amounts Expressed in Whole Dollars	<u>Private Purpose Trust</u> (71)	<u>Investment Trust</u> (72)	<u>Pension Trust</u> (73)	<u>Student Activity Custodial</u> (81)
Liabilities, Deferred Inflows Of Resources And Net Position				
Liabilities				
0400 Due to Other Funds				
0410 Due to Other Governments, Primary Government and Component Units				
0420 Accounts Payable				
0430 Contracts Payable				
0450 Short-Term Payables				
0460 Payroll Accruals and Withholdings				
0480 Unearned Revenues				
0490 Other Current Liabilities				
Total Liabilities				
0950 Deferred Inflows of Resources				
Net Position				
0791 Net Investment in Capital Assets				
0009 Restricted Net Position (0792 – 0798)		20,070		
0799 Unrestricted Net Position				
Total Net Position		\$20,070		
Total Liabilities, Deferred Inflows Of Resources And Net Position		\$20,070		

LEA : 129546103 Pottsville Area SD

Printed 11/8/2024 3:13:51 PM

Amounts Expressed in Whole Dollars	<u>Other Custodial</u> (89)	<u>Fiduciary Component Units</u> (98)	<u>Total Fiduciary Funds</u>
Liabilities, Deferred Inflows Of Resources And Net Position			
Liabilities			
0400 Due to Other Funds			
0410 Due to Other Governments, Primary Government and Component Units			
0420 Accounts Payable			
0430 Contracts Payable			
0450 Short-Term Payables			
0460 Payroll Accruals and Withholdings			
0480 Unearned Revenues			
0490 Other Current Liabilities			
Total Liabilities			
0950 Deferred Inflows of Resources			
Net Position			
0791 Net Investment in Capital Assets			
0009 Restricted Net Position (0792 – 0798)	416,742		436,812
0799 Unrestricted Net Position			
Total Net Position	\$416,742		\$436,812
Total Liabilities, Deferred Inflows Of Resources And Net Position	\$416,742		\$436,812

Amounts Expressed in Whole Dollars	<u>Private Purpose Trust</u> (71)	<u>Investment Trust</u> (72)	<u>Pension Trust</u> (73)	<u>Student Activity</u> <u>Custodial</u> (81)	<u>Other Custodial</u> (89)	<u>Fiduciary Component</u> <u>Units</u> (98)
Additions						
0091 Gifts and Contributions	73					
0095 Net Investment Earnings	210					
0092 Other Additions					577,619	
Deductions						
0093 Scholarships Awarded	1,600					
0094 Other Deductions					594,418	
Change in Net Position	(\$1,317)				(\$16,799)	
0006 Net Position – Beginning of Fiscal Year	21,387				433,541	
0007 Net Position Held in Trust for Pension Benefits						
Net Position - End of Fiscal Year	\$20,070				\$416,742	

Amounts Expressed in Whole Dollars	<u>Total Fiduciary Funds</u>
Additions	
0091 Gifts and Contributions	73
0095 Net Investment Earnings	210
0092 Other Additions	577,619
Deductions	
0093 Scholarships Awarded	1,600
0094 Other Deductions	594,418
Change In Net Position	(\$18,116)
0006 Net Position – Beginning of Fiscal Year	454,928
0007 Net Position Held in Trust for Pension Benefits	
Net Position - End of Fiscal Year	\$436,812

	<u>Revenue Reported in Current Year</u>	<u>Current Year Tax Accrual</u>	<u>Prior Year Tax Accrual</u>	<u>Taxes Collected in Current Year</u>
<u>Revenue from Local Sources</u>				
6111 Current Real Estate Taxes	11,138,216.03			11,138,216.03
6113 Public Utility Realty Taxes	14,628.20			14,628.20
6114 Payments in Lieu of Current Taxes - State / Local	36,372.70			36,372.70
6120 Current Per Capita Taxes, Section 679	38,270.20			38,270.20
6141 Current Act 511 Per Capita Taxes	38,270.20			38,270.20
6143 Current Act 511 Local Services Taxes	45,474.04		12,139.13	57,613.17
6151 Current Act 511 Earned Income Taxes	2,214,268.41	470,470.83	440,655.53	2,184,453.11
6152 Current Act 511 Occupation Taxes	521,456.64			521,456.64
6153 Current Act 511 Real Estate Transfer Taxes	274,408.91	35,465.42	39,824.29	278,767.78
6155 Current Act 511 Business Privilege Taxes	1,005,786.81	16,005.28	106,112.83	1,095,894.36
6411 Delinquent Real Estate Taxes	886,298.71		865,453.65	1,751,752.36
6420 Delinquent Per Capita Taxes, Section 679	15,231.99			15,231.99
6440 Delinquent Local Enabling Taxes - Flat Rate Assessments	16,627.78			16,627.78
6451 Delinquent Act 511 Earned Income Taxes	43,390.90			43,390.90
6452 Delinquent Act 511 Occupation Taxes	353,883.99	36,947.91	35,655.83	352,591.91
6453 Delinquent Act 511 Real Estate Transfer Taxes		11,255.10		(11,255.10)
6455 Delinquent Act 511 Business Privilege Taxes	45,449.23			45,449.23
6500 Earnings on Investments	1,166,259.79			
6700 Revenues from LEA Activities	111,473.17			
6832 Federal IDEA Revenue Received as Pass Through	597,508.76			
6910 Rentals	38,385.00			
6920 Contributions and Donations from Private Sources	183,068.87			
6941 Regular Day School Tuition	30,110.44			
6942 Summer School Tuition	6,873.50			
6944 Receipts from Other LEAs in Pennsylvania - Education	2,065,562.85			
6961 Transportation Services Provided Other Pennsylvania LEAs	51,692.80			
6962 Other Services Provided Other Pennsylvania LEAs	75,570.00			
6970 Services Provided Other Funds	1,926.68			
6991 Refunds of a Prior Year Expenditure	30,649.02			
6992 Energy Efficiency Revenues and Incentives	71,033.03			
6999 Other Revenues Not Specified Above	99,715.05			
TOTAL Revenue from Local Sources	\$21,217,863.70	\$570,144.54	\$1,499,841.26	\$17,617,731.46

	Revenue Reported In Current Year
<u>Revenue from State Sources</u>	
7111 Basic Education Funding-Formula	18,284,397.66
7160 Tuition for Orphans Subsidy	39,166.79
7271 Special Education funds for School-Aged Pupils	2,521,088.16
7311 Pupil Transportation Subsidy	469,658.91
7312 Nonpublic and Charter School Pupil Transportation Subsidy	61,985.00
7330 Health Services (Medical, Dental, Nurse, Act 25)	51,585.46
7340 State Property Tax Reduction Allocation	887,801.10
7362 School Mental Health & Safety and Security Grants	206,620.62
7505 Ready to Learn Block Grant	488,569.00
7599 Other State Revenue Not Listed Elsewhere in the 7000 Series	72,476.50
7810 State Share of Social Security and Medicare Taxes	829,187.31
7820 State Share of Retirement Contributions	4,005,530.93
TOTAL Revenue from State Sources	\$27,918,067.44

	Revenue Reported In Current Year
<u>Revenue from Federal Sources</u>	
8514 Title I - Improving the Academic Achievement of the Disadvantaged	1,049,027.72
8515 Title II - Preparing, Training, and Recruiting High Quality Teachers and Principals	113,858.21
8517 Title IV - 21st Century Schools	93,277.71
8743 ESSER II - Elementary and Secondary School Emergency Relief Fund	146,399.68
8744 ARP ESSER - Elementary and Secondary School Emergency Relief Fund	1,095,241.31
8751 ARP ESSER Learning Loss	177,458.91
8752 ARP ESSER Summer Programs	11,946.63
8754 ARP ESSER Homeless Children and Youth Funds	6,687.98
8810 School-Based Access Medicaid Reimbursement Program (SBAP) Reimbursements (Access)	32,329.41
8820 Medical Assistance Reimbursement for Administrative Claiming (Quarterly) Program	7,783.57
TOTAL Revenue from Federal Sources	\$2,734,011.13

	Revenue Reported In Current Year			
<u>Other Financing Sources</u>				
9220 Leases and Other Right-to-Use Arrangements	50,673.22			
9290 Other Extended-Term Financing Proceeds	0.50			
9400 Sale of or Compensation for Loss of Fixed Assets	240,516.26			
9990 Insurance Recoveries	5,680.00			
TOTAL Other Financing Sources	\$296,869.98			
TOTAL FROM ALL SOURCES	\$52,166,812.25	\$570,144.54	\$1,499,841.26	\$17,617,731.46

	<u>General Fund (10)</u>	<u>Student Sponsored Activity Fund (21)</u>	<u>Public Purpose Trust (27)</u>	<u>Other Compt Approved (28)</u>	<u>Athletic / Activity (29)</u>	<u>Capital Reserve (690, 1850) (31)</u>
6000 Revenue from Local Sources						
6111 Current Real Estate Taxes	11,138,216.03					
6113 Public Utility Realty Taxes	14,628.20					
6114 Payments in Lieu of Current Taxes - State / Local	36,372.70					
6120 Current Per Capita Taxes, Section 679	38,270.20					
6141 Current Act 511 Per Capita Taxes	38,270.20					
6143 Current Act 511 Local Services Taxes	45,474.04					
6151 Current Act 511 Earned Income Taxes	2,214,268.41					
6152 Current Act 511 Occupation Taxes	521,456.64					
6153 Current Act 511 Real Estate Transfer Taxes	274,408.91					
6155 Current Act 511 Business Privilege Taxes	1,005,786.81					
6411 Delinquent Real Estate Taxes	886,298.71					
6420 Delinquent Per Capita Taxes, Section 679	15,231.99					
6440 Delinquent Local Enabling Taxes - Flat Rate Assessments	16,627.78					
6451 Delinquent Act 511 Earned Income Taxes	43,390.90					
6452 Delinquent Act 511 Occupation Taxes	353,883.99					
6455 Delinquent Act 511 Business Privilege Taxes	45,449.23					
6500 Earnings on Investments	1,166,259.79					
6700 Revenues from LEA Activities	111,473.17					
6832 Federal IDEA Revenue Received as Pass Through	597,508.76					
6910 Rentals	38,385.00					
6920 Contributions and Donations from Private Sources	183,068.87					
6941 Regular Day School Tuition	30,110.44					
6942 Summer School Tuition	6,873.50					
6944 Receipts from Other LEAs in Pennsylvania - Education	2,065,562.85					
6961 Transportation Services Provided Other Pennsylvania LEAs	51,692.80					
6962 Other Services Provided Other Pennsylvania LEAs	75,570.00					
6970 Services Provided Other Funds	1,926.68					
6991 Refunds of a Prior Year Expenditure	30,649.02					
6992 Energy Efficiency Revenues and Incentives	71,033.03					
6999 Other Revenues Not Specified Above	99,715.05					
6000 Total Revenue from Local Sources	\$21,217,863.70					
7000 Revenue from State Sources						
7111 Basic Education Funding-Formula	18,284,397.66					
7160 Tuition for Orphans Subsidy	39,166.79					
7271 Special Education funds for School-Aged Pupils	2,521,088.16					

	<u>Capital Reserve</u> <u>(1431) (32)</u>	<u>Other Capital</u> <u>Projects Fund (39)</u>	<u>Debt Service (40)</u>	<u>Permanent (90)</u>	<u>Total</u>
6000 Revenue from Local Sources					
6111 Current Real Estate Taxes					11,138,216.03
6113 Public Utility Realty Taxes					14,628.20
6114 Payments in Lieu of Current Taxes - State / Local					36,372.70
6120 Current Per Capita Taxes, Section 679					38,270.20
6141 Current Act 511 Per Capita Taxes					38,270.20
6143 Current Act 511 Local Services Taxes					45,474.04
6151 Current Act 511 Earned Income Taxes					2,214,268.41
6152 Current Act 511 Occupation Taxes					521,456.64
6153 Current Act 511 Real Estate Transfer Taxes					274,408.91
6155 Current Act 511 Business Privilege Taxes					1,005,786.81
6411 Delinquent Real Estate Taxes					886,298.71
6420 Delinquent Per Capita Taxes, Section 679					15,231.99
6440 Delinquent Local Enabling Taxes - Flat Rate Assessments					16,627.78
6451 Delinquent Act 511 Earned Income Taxes					43,390.90
6452 Delinquent Act 511 Occupation Taxes					353,883.99
6455 Delinquent Act 511 Business Privilege Taxes					45,449.23
6500 Earnings on Investments	98,231.00				1,264,490.79
6700 Revenues from LEA Activities					111,473.17
6832 Federal IDEA Revenue Received as Pass Through					597,508.76
6910 Rentals					38,385.00
6920 Contributions and Donations from Private Sources					183,068.87
6941 Regular Day School Tuition					30,110.44
6942 Summer School Tuition					6,873.50
6944 Receipts from Other LEAs in Pennsylvania - Education					2,065,562.85
6961 Transportation Services Provided Other Pennsylvania LEAs					51,692.80
6962 Other Services Provided Other Pennsylvania LEAs					75,570.00
6970 Services Provided Other Funds					1,926.68
6991 Refunds of a Prior Year Expenditure					30,649.02
6992 Energy Efficiency Revenues and Incentives					71,033.03
6999 Other Revenues Not Specified Above					99,715.05
6000 Total Revenue from Local Sources	\$98,231.00				\$21,316,094.70
7000 Revenue from State Sources					
7111 Basic Education Funding-Formula					18,284,397.66
7160 Tuition for Orphans Subsidy					39,166.79
7271 Special Education funds for School-Aged Pupils					2,521,088.16

	<u>General Fund (10)</u>	<u>Student Sponsored Activity Fund (21)</u>	<u>Public Purpose Trust (27)</u>	<u>Other Compt Approved (28)</u>	<u>Athletic / Activity (29)</u>	<u>Capital Reserve (690, 1850) (31)</u>
7000 Revenue from State Sources						
7311 Pupil Transportation Subsidy	469,658.91					
7312 Nonpublic and Charter School Pupil Transportation Subsidy	61,985.00					
7330 Health Services (Medical, Dental, Nurse, Act 25)	51,585.46					
7340 State Property Tax Reduction Allocation	887,801.10					
7362 School Mental Health & Safety and Security Grants	206,620.62					
7505 Ready to Learn Block Grant	488,569.00					
7599 Other State Revenue Not Listed Elsewhere in the 7000 Series	72,476.50					
7810 State Share of Social Security and Medicare Taxes	829,187.31					
7820 State Share of Retirement Contributions	4,005,530.93					
7000 Total Revenue from State Sources	\$27,918,067.44					
8000 Revenue from Federal Sources						
8514 Title I - Improving the Academic Achievement of the Disadvantaged	1,049,027.72					
8515 Title II - Preparing, Training, and Recruiting High Quality Teachers and Principals	113,858.21					
8517 Title IV - 21st Century Schools	93,277.71					
8743 ESSER II - Elementary and Secondary School Emergency Relief Fund	146,399.68					
8744 ARP ESSER - Elementary and Secondary School Emergency Relief Fund	1,095,241.31					
8751 ARP ESSER Learning Loss	177,458.91					
8752 ARP ESSER Summer Programs	11,946.63					
8754 ARP ESSER Homeless Children and Youth Funds	6,687.98					
8810 School-Based Access Medicaid Reimbursement Program (SBAP) Reimbursements (Access)	32,329.41					
8820 Medical Assistance Reimbursement for Administrative Claiming (Quarterly) Program	7,783.57					
8000 Total Revenue from Federal Sources	\$2,734,011.13					
9000 Other Financing Sources						
9220 Leases and Other Right-to-Use Arrangements	50,673.22					
9290 Other Extended-Term Financing Proceeds	0.50					
9310 General Fund Transfers						
9400 Sale of or Compensation for Loss of Fixed Assets	240,516.26					
9990 Insurance Recoveries	5,680.00					
9000 Total Other Financing Sources	\$296,869.98					
Total From All Sources	\$52,166,812.25					

	<u>Capital Reserve</u> <u>(1431) (32)</u>	<u>Other Capital</u> <u>Projects Fund (39)</u>	<u>Debt Service (40)</u>	<u>Permanent (90)</u>	<u>Total</u>
7000 Revenue from State Sources					
7311 Pupil Transportation Subsidy					469,658.91
7312 Nonpublic and Charter School Pupil Transportation Subsidy					61,985.00
7330 Health Services (Medical, Dental, Nurse, Act 25)					51,585.46
7340 State Property Tax Reduction Allocation					887,801.10
7362 School Mental Health & Safety and Security Grants					206,620.62
7505 Ready to Learn Block Grant					488,569.00
7599 Other State Revenue Not Listed Elsewhere in the 7000 Series					72,476.50
7810 State Share of Social Security and Medicare Taxes					829,187.31
7820 State Share of Retirement Contributions					4,005,530.93
7000 Total Revenue from State Sources					\$27,918,067.44
8000 Revenue from Federal Sources					
8514 Title I - Improving the Academic Achievement of the Disadvantaged					1,049,027.72
8515 Title II - Preparing, Training, and Recruiting High Quality Teachers and Principals					113,858.21
8517 Title IV - 21st Century Schools					93,277.71
8743 ESSER II - Elementary and Secondary School Emergency Relief Fund					146,399.68
8744 ARP ESSER - Elementary and Secondary School Emergency Relief Fund					1,095,241.31
8751 ARP ESSER Learning Loss					177,458.91
8752 ARP ESSER Summer Programs					11,946.63
8754 ARP ESSER Homeless Children and Youth Funds					6,687.98
8810 School-Based Access Medicaid Reimbursement Program (SBAP) Reimbursements (Access)					32,329.41
8820 Medical Assistance Reimbursement for Administrative Claiming (Quarterly) Program					7,783.57
8000 Total Revenue from Federal Sources					\$2,734,011.13
9000 Other Financing Sources					
9220 Leases and Other Right-to-Use Arrangements					50,673.22
9290 Other Extended-Term Financing Proceeds					0.50
9310 General Fund Transfers	750,000.00				750,000.00
9400 Sale of or Compensation for Loss of Fixed Assets					240,516.26
9990 Insurance Recoveries					5,680.00
9000 Total Other Financing Sources	\$750,000.00				\$1,046,869.98
Total From All Sources	\$848,231.00				\$53,015,043.25

	<u>General Fund (10)</u>	<u>Student Sponsored Activity Fund (21)</u>	<u>Public Purpose Trust (27)</u>	<u>Other Compt Approved (28)</u>	<u>Athletic / Activity (29)</u>	<u>Capital Reserve (690, 1850) (31)</u>
Revenue from Local Sources	21,217,863.70					
Revenue from State Sources	27,918,067.44					
Revenue from Federal Sources	2,734,011.13					
Other Financing Sources	296,869.98					
Total From All Sources	\$52,166,812.25					

	<u>Capital Reserve (1431)</u> <u>(32)</u>	<u>Other Capital Projects</u> <u>Fund (39)</u>	<u>Debt Service (40)</u>	<u>Permanent (90)</u>	<u>Total</u>
Revenue from Local Sources	98,231.00				21,316,094.70
Revenue from State Sources					27,918,067.44
Revenue from Federal Sources					2,734,011.13
Other Financing Sources	750,000.00				1,046,869.98
Total From All Sources	\$848,231.00				\$53,015,043.25

General Fund (10)

1000 Instruction

Total

100 Personnel Services – Salaries

100 Personnel Services – Salaries

11,990,891.92

Total Personnel Services – Salaries

\$11,990,891.92

200 Personnel Services – Employee Benefits

210 Group Insurance – Contracted Provider

6,842.24

220 Social Security Contributions

891,006.59

230 PSERS Retirement Contributions

4,022,061.22

250 Unemployment Compensation

8,786.58

260 Workers’ Compensation

32,708.83

270 Group Insurance – Self-Insurance

3,376,678.14

280 Other Post-Employment Benefits (OPEB)

111,022.23

291 Other Retirement Plans

4,882.50

292 Health Savings Accounts

255,104.22

Total Personnel Services – Employee Benefits

\$8,708,892.55

300 Purchased Professional and Technical Services

322 Professional Educational Services – Ius

1,119,229.40

323 Professional Educational Services – Other Educational Agencies

157,701.64

329 Professional Educational Services – Other

433,655.24

330 Other Professional Services

208,515.56

Total Purchased Professional and Technical Services

\$1,919,101.84

400 Purchased Property Services

430 Repairs and Maintenance Services

886.35

440 Rentals

359.98

Total Purchased Property Services

\$1,246.33

500 Other Purchased Services

530 Communications

193.02

561 Tuition To Other School Districts Within the State

391,666.04

562 Tuition To Pennsylvania Charter Schools

3,909,174.81

564 Tuition To Career and Technology Centers

563,256.50

566 Tuition To Institutions of Higher Education and Technical Institutes

70,853.50

567 Tuition To Approved Private Schools (APS) and PA Chartered Schools for the Deaf and Blind

24,370.13

568 Tuition To Private Residential Rehabilitative Institutions (PRRI) [In-State] and Detention Centers

37,419.05

569 Tuition – Other

214,640.22

580 Travel

1,614.47

594 IU Payment By Withholding for Institutionalized Children’s Programs – Special Classes

3,843.34

Total Other Purchased Services

\$5,217,031.08

600 Supplies

610 General Supplies

319,476.13

640 Books and Periodicals

322,357.13

650 Supplies & Fees – Technology Related

321,588.62

Total Supplies

\$963,421.88

700 Property

752 Capital Equipment – Original and Additional

1,544.00

General Fund (10)

1000 Instruction

	<u>Total</u>
Total Property	\$1,544.00
800 <u>Other Objects</u>	
810 Dues and Fees	5,271.00
890 Miscellaneous Expenditures	1,863.00
Total Other Objects	\$7,134.00
Total 1000 Instruction	\$28,809,263.60

General Fund (10)

1100 Regular Programs – Elementary / Secondary

	<u>Elementary</u>	<u>Secondary</u>	<u>Federal</u>	<u>Total</u>
100 Personnel Services – Salaries				
100 Personnel Services – Salaries	3,750,923.90	3,864,966.24	1,083,272.58	8,699,162.72
Total Personnel Services – Salaries	\$3,750,923.90	\$3,864,966.24	\$1,083,272.58	\$8,699,162.72
200 Personnel Services – Employee Benefits				
210 Group Insurance – Contracted Provider	2,120.40	2,135.40	390.00	4,645.80
220 Social Security Contributions	279,868.37	286,418.76	79,344.31	645,631.44
230 PSERS Retirement Contributions	1,415,172.31	1,406,535.62	99,989.52	2,921,697.45
260 Workers' Compensation	19,736.42	12,972.41		32,708.83
270 Group Insurance – Self-Insurance	1,089,206.18	1,193,947.61	159,893.62	2,443,047.41
280 Other Post-Employment Benefits (OPEB)	42,011.12	42,011.11		84,022.23
291 Other Retirement Plans	4,882.50			4,882.50
292 Health Savings Accounts	95,304.58	87,222.51		182,527.09
Total Personnel Services – Employee Benefits	\$2,948,301.88	\$3,031,243.42	\$339,617.45	\$6,319,162.75
300 Purchased Professional and Technical Services				
322 Professional Educational Services – Ius		13.75	33,939.61	33,953.36
329 Professional Educational Services – Other	156,594.90	242,029.31	7,170.28	405,794.49
Total Purchased Professional and Technical Services	\$156,594.90	\$242,043.06	\$41,109.89	\$439,747.85
400 Purchased Property Services				
430 Repairs and Maintenance Services	225.00	661.35		886.35
440 Rentals	90.00	89.99		179.99
Total Purchased Property Services	\$315.00	\$751.34		\$1,066.34
500 Other Purchased Services				
530 Communications	94.20	98.82		193.02
562 Tuition To Pennsylvania Charter Schools	732,084.23	931,919.55		1,664,003.78
580 Travel	752.40	103.22	346.98	1,202.60
Total Other Purchased Services	\$732,930.83	\$932,121.59	\$346.98	\$1,665,399.40
600 Supplies				
610 General Supplies	99,238.57	69,373.87	142,098.13	310,710.57
640 Books and Periodicals	182,887.24	103,785.24	11,385.23	298,057.71
650 Supplies & Fees – Technology Related	119,889.58	155,343.36	37,113.22	312,346.16
Total Supplies	\$402,015.39	\$328,502.47	\$190,596.58	\$921,114.44
800 Other Objects				
810 Dues and Fees	865.00	3,850.00		4,715.00
890 Miscellaneous Expenditures	245.00	1,618.00		1,863.00
Total Other Objects	\$1,110.00	\$5,468.00		\$6,578.00
Total 1100 Regular Programs – Elementary / Secondary	\$7,992,191.90	\$8,405,096.12	\$1,654,943.48	\$18,052,231.50

General Fund (10)

1110 Regular Programs

	<u>Elementary</u>	<u>Secondary</u>	<u>Federal</u>	<u>Total</u>
100 Personnel Services – Salaries				
100 Personnel Services – Salaries	3,750,923.90	3,864,966.24		7,615,890.14
Total Personnel Services – Salaries	\$3,750,923.90	\$3,864,966.24		\$7,615,890.14
200 Personnel Services – Employee Benefits				
210 Group Insurance – Contracted Provider	2,120.40	2,135.40		4,255.80
220 Social Security Contributions	279,868.37	286,418.76		566,287.13
230 PSERS Retirement Contributions	1,415,172.31	1,406,535.62		2,821,707.93
260 Workers' Compensation	19,736.42	12,972.41		32,708.83
270 Group Insurance – Self-Insurance	1,089,206.18	1,193,947.61		2,283,153.79
280 Other Post-Employment Benefits (OPEB)	42,011.12	42,011.11		84,022.23
291 Other Retirement Plans	4,882.50			4,882.50
292 Health Savings Accounts	95,304.58	87,222.51		182,527.09
Total Personnel Services – Employee Benefits	\$2,948,301.88	\$3,031,243.42		\$5,979,545.30
300 Purchased Professional and Technical Services				
322 Professional Educational Services – Ius		13.75		13.75
329 Professional Educational Services – Other	156,594.90	242,029.31		398,624.21
Total Purchased Professional and Technical Services	\$156,594.90	\$242,043.06		\$398,637.96
400 Purchased Property Services				
430 Repairs and Maintenance Services	225.00	661.35		886.35
440 Rentals	90.00	89.99		179.99
Total Purchased Property Services	\$315.00	\$751.34		\$1,066.34
500 Other Purchased Services				
530 Communications	94.20	98.82		193.02
562 Tuition To Pennsylvania Charter Schools	732,084.23	931,919.55		1,664,003.78
580 Travel	752.40	103.22	346.98	1,202.60
Total Other Purchased Services	\$732,930.83	\$932,121.59	\$346.98	\$1,665,399.40
600 Supplies				
610 General Supplies	99,238.57	69,373.87	394.14	169,006.58
640 Books and Periodicals	182,887.24	103,785.24		286,672.48
650 Supplies & Fees – Technology Related	119,889.58	155,343.36		275,232.94
Total Supplies	\$402,015.39	\$328,502.47	\$394.14	\$730,912.00
800 Other Objects				
810 Dues and Fees	865.00	3,850.00		4,715.00
890 Miscellaneous Expenditures	245.00	1,618.00		1,863.00
Total Other Objects	\$1,110.00	\$5,468.00		\$6,578.00
Total 1110 Regular Programs	\$7,992,191.90	\$8,405,096.12	\$741.12	\$16,398,029.14

General Fund (10)

	<u>Elementary</u>	<u>Secondary</u>	<u>Federal</u>	<u>Total</u>
1190 Federally-Funded Regular Programs				
100 Personnel Services – Salaries				
100 Personnel Services – Salaries			1,083,272.58	1,083,272.58
Total Personnel Services – Salaries			\$1,083,272.58	\$1,083,272.58
200 Personnel Services – Employee Benefits				
210 Group Insurance – Contracted Provider			390.00	390.00
220 Social Security Contributions			79,344.31	79,344.31
230 PSERS Retirement Contributions			99,989.52	99,989.52
270 Group Insurance – Self-Insurance			159,893.62	159,893.62
Total Personnel Services – Employee Benefits			\$339,617.45	\$339,617.45
300 Purchased Professional and Technical Services				
322 Professional Educational Services – Ius			33,939.61	33,939.61
329 Professional Educational Services – Other			7,170.28	7,170.28
Total Purchased Professional and Technical Services			\$41,109.89	\$41,109.89
600 Supplies				
610 General Supplies			141,703.99	141,703.99
640 Books and Periodicals			11,385.23	11,385.23
650 Supplies & Fees – Technology Related			37,113.22	37,113.22
Total Supplies			\$190,202.44	\$190,202.44
Total 1190 Federally-Funded Regular Programs			\$1,654,202.36	\$1,654,202.36

General Fund (10)

	<u>Elementary</u>	<u>Secondary</u>	<u>Federal</u>	<u>Total</u>
1200 Special Programs – Elementary / Secondary				
100 Personnel Services – Salaries				
100 Personnel Services – Salaries	1,688,665.04	1,268,462.71	51,600.00	3,008,727.75
Total Personnel Services – Salaries	\$1,688,665.04	\$1,268,462.71	\$51,600.00	\$3,008,727.75
200 Personnel Services – Employee Benefits				
210 Group Insurance – Contracted Provider	960.30	776.70	36.00	1,773.00
220 Social Security Contributions	125,898.37	94,428.11	3,857.41	224,183.89
230 PSERS Retirement Contributions	571,366.00	432,777.09		1,004,143.09
250 Unemployment Compensation	4,393.29	4,393.29		8,786.58
270 Group Insurance – Self-Insurance	460,869.33	352,580.85	25,934.76	839,384.94
280 Other Post-Employment Benefits (OPEB)	10,000.00	10,000.00		20,000.00
292 Health Savings Accounts	36,158.16	29,093.97		65,252.13
Total Personnel Services – Employee Benefits	\$1,209,645.45	\$924,050.01	\$29,828.17	\$2,163,523.63
300 Purchased Professional and Technical Services				
322 Professional Educational Services – Ius	239,331.41	323,296.59	496,164.00	1,058,792.00
323 Professional Educational Services – Other Educational Agencies		3,204.00		3,204.00
329 Professional Educational Services – Other		14,126.75		14,126.75
330 Other Professional Services	104,257.78	104,257.78		208,515.56
Total Purchased Professional and Technical Services	\$343,589.19	\$444,885.12	\$496,164.00	\$1,284,638.31
400 Purchased Property Services				
440 Rentals	90.00	89.99		179.99
Total Purchased Property Services	\$90.00	\$89.99		\$179.99
500 Other Purchased Services				
561 Tuition To Other School Districts Within the State	41,030.87	207,317.28		248,348.15
562 Tuition To Pennsylvania Charter Schools	817,594.69	1,427,576.34		2,245,171.03
567 Tuition To Approved Private Schools (APS) and PA Chartered Schools for the Deaf and Blind	12,185.06	12,185.07		24,370.13
569 Tuition – Other	10,360.00	114,510.13		124,870.13
580 Travel	205.92	205.95		411.87
594 IU Payment By Withholding for Institutionalized Children’s Programs – Special Classes	1,921.67	1,921.67		3,843.34
Total Other Purchased Services	\$883,298.21	\$1,763,716.44		\$2,647,014.65
600 Supplies				
610 General Supplies	1,865.34	2,638.22	3,952.49	8,456.05
640 Books and Periodicals	12,083.77	3,435.52		15,519.29
650 Supplies & Fees – Technology Related	2,853.50	6,388.96		9,242.46
Total Supplies	\$16,802.61	\$12,462.70	\$3,952.49	\$33,217.80
700 Property				
752 Capital Equipment – Original and Additional			1,544.00	1,544.00
Total Property			\$1,544.00	\$1,544.00
800 Other Objects				
810 Dues and Fees	278.00	278.00		556.00
Total Other Objects	\$278.00	\$278.00		\$556.00
Total 1200 Special Programs – Elementary / Secondary	\$4,142,368.50	\$4,413,944.97	\$583,088.66	\$9,139,402.13

General Fund (10)

1210 Life Skills Support

100 Personnel Services – Salaries

100 Personnel Services – Salaries

Total Personnel Services – Salaries

200 Personnel Services – Employee Benefits

210 Group Insurance – Contracted Provider

220 Social Security Contributions

230 PSERS Retirement Contributions

270 Group Insurance – Self-Insurance

292 Health Savings Accounts

Total Personnel Services – Employee Benefits

400 Purchased Property Services

440 Rentals

Total Purchased Property Services

600 Supplies

610 General Supplies

640 Books and Periodicals

650 Supplies & Fees – Technology Related

Total Supplies

Total 1210 Life Skills Support

Elementary

Secondary

Federal

Total

191,021.71

256,756.48

447,778.19

\$191,021.71

\$256,756.48

\$447,778.19

111.00

180.00

291.00

14,415.73

19,291.83

33,707.56

64,051.95

84,168.45

148,220.40

50,570.25

53,155.79

103,726.04

5,441.26

5,747.51

11,188.77

\$134,590.19

\$162,543.58

\$297,133.77

90.00

89.99

179.99

\$90.00

\$89.99

\$179.99

306.54

2,463.50

2,770.04

144.65

144.65

289.30

187.50

786.50

974.00

\$638.69

\$3,394.65

\$4,033.34

\$326,340.59

\$422,784.70

\$749,125.29

General Fund (10)

	<u>Elementary</u>	<u>Secondary</u>	<u>Federal</u>	<u>Total</u>
1220 Sensory Support				
100 Personnel Services – Salaries				
100 Personnel Services – Salaries	204,499.54	75,634.56		280,134.10
Total Personnel Services – Salaries	\$204,499.54	\$75,634.56		\$280,134.10
200 Personnel Services – Employee Benefits				
210 Group Insurance – Contracted Provider	112.50	37.50		150.00
220 Social Security Contributions	15,079.21	5,580.72		20,659.93
230 PSERS Retirement Contributions	67,367.98	25,715.75		93,083.73
270 Group Insurance – Self-Insurance	38,502.17	20,466.75		58,968.92
292 Health Savings Accounts	1,225.00	850.00		2,075.00
Total Personnel Services – Employee Benefits	\$122,286.86	\$52,650.72		\$174,937.58
500 Other Purchased Services				
561 Tuition To Other School Districts Within the State	35,929.09			35,929.09
Total Other Purchased Services	\$35,929.09			\$35,929.09
600 Supplies				
610 General Supplies	81.88	81.87		163.75
640 Books and Periodicals		65.89		65.89
Total Supplies	\$81.88	\$147.76		\$229.64
800 Other Objects				
810 Dues and Fees	278.00	278.00		556.00
Total Other Objects	\$278.00	\$278.00		\$556.00
Total 1220 Sensory Support	\$363,075.37	\$128,711.04		\$491,786.41

LEA : 129546103 Pottsville Area SD

Printed 11/8/2024 3:14:05 PM

General Fund (10)

1230 Emotional Support

	<u>Elementary</u>	<u>Secondary</u>	<u>Federal</u>	<u>Total</u>
100 Personnel Services – Salaries				
100 Personnel Services – Salaries	475,698.49	176,599.48		652,297.97
Total Personnel Services – Salaries	\$475,698.49	\$176,599.48		\$652,297.97
200 Personnel Services – Employee Benefits				
210 Group Insurance – Contracted Provider	283.50	106.50		390.00
220 Social Security Contributions	35,583.25	13,275.72		48,858.97
230 PSERS Retirement Contributions	156,305.50	58,003.87		214,309.37
270 Group Insurance – Self-Insurance	137,747.21	21,738.38		159,485.59
292 Health Savings Accounts	10,571.89	2,057.29		12,629.18
Total Personnel Services – Employee Benefits	\$340,491.35	\$95,181.76		\$435,673.11
300 Purchased Professional and Technical Services				
330 Other Professional Services	33,389.52	33,389.52		66,779.04
Total Purchased Professional and Technical Services	\$33,389.52	\$33,389.52		\$66,779.04
500 Other Purchased Services				
561 Tuition To Other School Districts Within the State	4,959.00	67,236.10		72,195.10
580 Travel	188.24	188.26		376.50
Total Other Purchased Services	\$5,147.24	\$67,424.36		\$72,571.60
600 Supplies				
610 General Supplies	943.85	8.49	38.94	991.28
640 Books and Periodicals	226.21			226.21
Total Supplies	\$1,170.06	\$8.49	\$38.94	\$1,217.49
Total 1230 Emotional Support	\$855,896.66	\$372,603.61	\$38.94	\$1,228,539.21

General Fund (10)

1240 Academic Support

	<u>Elementary</u>	<u>Secondary</u>	<u>Federal</u>	<u>Total</u>
100 Personnel Services – Salaries				
100 Personnel Services – Salaries	780,358.44	701,382.29	51,600.00	1,533,340.73
Total Personnel Services – Salaries	\$780,358.44	\$701,382.29	\$51,600.00	\$1,533,340.73
200 Personnel Services – Employee Benefits				
210 Group Insurance – Contracted Provider	433.26	422.70	36.00	891.96
220 Social Security Contributions	57,997.29	51,940.15	3,857.41	113,794.85
230 PSERS Retirement Contributions	272,789.12	246,754.60		519,543.72
270 Group Insurance – Self-Insurance	230,451.86	247,789.67	25,934.76	504,176.29
280 Other Post-Employment Benefits (OPEB)	3,500.00	3,500.00		7,000.00
292 Health Savings Accounts	17,975.01	19,616.24		37,591.25
Total Personnel Services – Employee Benefits	\$583,146.54	\$570,023.36	\$29,828.17	\$1,182,998.07
300 Purchased Professional and Technical Services				
329 Professional Educational Services – Other		14,126.75		14,126.75
Total Purchased Professional and Technical Services		\$14,126.75		\$14,126.75
500 Other Purchased Services				
562 Tuition To Pennsylvania Charter Schools	817,594.69	1,427,576.34		2,245,171.03
580 Travel	17.68	17.69		35.37
Total Other Purchased Services	\$817,612.37	\$1,427,594.03		\$2,245,206.40
600 Supplies				
610 General Supplies	497.37	48.67		546.04
640 Books and Periodicals	11,712.91	3,224.98		14,937.89
650 Supplies & Fees – Technology Related	2,666.00	5,602.46		8,268.46
Total Supplies	\$14,876.28	\$8,876.11		\$23,752.39
Total 1240 Academic Support	\$2,195,993.63	\$2,722,002.54	\$81,428.17	\$4,999,424.34

LEA : 129546103 Pottsville Area SD

Printed 11/8/2024 3:14:05 PM

General Fund (10)

1241 Learning Support – Public

	<u>Elementary</u>	<u>Secondary</u>	<u>Federal</u>	<u>Total</u>
100 Personnel Services – Salaries				
100 Personnel Services – Salaries	780,405.32	691,217.80	51,600.00	1,523,223.12
Total Personnel Services – Salaries	\$780,405.32	\$691,217.80	\$51,600.00	\$1,523,223.12
200 Personnel Services – Employee Benefits				
210 Group Insurance – Contracted Provider	431.55	416.55	36.00	884.10
220 Social Security Contributions	57,996.76	51,189.67	3,857.41	113,043.84
230 PSERS Retirement Contributions	272,789.11	243,282.69		516,071.80
270 Group Insurance – Self-Insurance	229,553.67	243,686.52	25,934.76	499,174.95
280 Other Post-Employment Benefits (OPEB)	3,500.00	3,500.00		7,000.00
292 Health Savings Accounts	17,724.69	19,249.69		36,974.38
Total Personnel Services – Employee Benefits	\$581,995.78	\$561,325.12	\$29,828.17	\$1,173,149.07
300 Purchased Professional and Technical Services				
329 Professional Educational Services – Other		14,126.75		14,126.75
Total Purchased Professional and Technical Services		\$14,126.75		\$14,126.75
500 Other Purchased Services				
562 Tuition To Pennsylvania Charter Schools	817,594.69	1,427,576.34		2,245,171.03
580 Travel	17.68	17.69		35.37
Total Other Purchased Services	\$817,612.37	\$1,427,594.03		\$2,245,206.40
600 Supplies				
610 General Supplies	497.37	48.67		546.04
640 Books and Periodicals	11,712.91	3,224.98		14,937.89
650 Supplies & Fees – Technology Related	2,666.00	5,602.46		8,268.46
Total Supplies	\$14,876.28	\$8,876.11		\$23,752.39
Total 1241 Learning Support – Public	\$2,194,889.75	\$2,703,139.81	\$81,428.17	\$4,979,457.73

General Fund (10)

1243 Gifted Support

	<u>Elementary</u>	<u>Secondary</u>	<u>Federal</u>	<u>Total</u>
100 Personnel Services – Salaries				
100 Personnel Services – Salaries	(46.88)	10,164.49		10,117.61
Total Personnel Services – Salaries	(\$46.88)	\$10,164.49		\$10,117.61
200 Personnel Services – Employee Benefits				
210 Group Insurance – Contracted Provider	1.71	6.15		7.86
220 Social Security Contributions	0.53	750.48		751.01
230 PSERS Retirement Contributions	0.01	3,471.91		3,471.92
270 Group Insurance – Self-Insurance	898.19	4,103.15		5,001.34
292 Health Savings Accounts	250.32	366.55		616.87
Total Personnel Services – Employee Benefits	\$1,150.76	\$8,698.24		\$9,849.00
Total 1243 Gifted Support	\$1,103.88	\$18,862.73		\$19,966.61

General Fund (10)

1260 Physical Support

600 Supplies

610 General Supplies

Total Supplies

700 Property

752 Capital Equipment – Original and Additional

Total Property

Total 1260 Physical Support

Elementary

Secondary

Federal

Total

3,913.55 3,913.55

\$3,913.55 \$3,913.55

1,544.00 1,544.00

\$1,544.00 \$1,544.00

\$5,457.55 \$5,457.55

LEA : 129546103 Pottsville Area SD

Printed 11/8/2024 3:14:05 PM

General Fund (10)

1280 Early Intervention Support

300 Purchased Professional and Technical Services

322 Professional Educational Services – Ius

Total Purchased Professional and Technical Services

Total 1280 Early Intervention Support

Elementary

Secondary

Federal

Total

2,065.21

2,065.21

\$2,065.21

\$2,065.21

\$2,065.21

\$2,065.21

General Fund (10)

1290 Special Programs - Other Support

	<u>Elementary</u>	<u>Secondary</u>	<u>Federal</u>	<u>Total</u>
100 Personnel Services – Salaries				
100 Personnel Services – Salaries	37,086.86	58,089.90		95,176.76
Total Personnel Services – Salaries	\$37,086.86	\$58,089.90		\$95,176.76
200 Personnel Services – Employee Benefits				
210 Group Insurance – Contracted Provider	20.04	30.00		50.04
220 Social Security Contributions	2,822.89	4,339.69		7,162.58
230 PSERS Retirement Contributions	10,851.45	18,134.42		28,985.87
250 Unemployment Compensation	4,393.29	4,393.29		8,786.58
270 Group Insurance – Self-Insurance	3,597.84	9,430.26		13,028.10
280 Other Post-Employment Benefits (OPEB)	6,500.00	6,500.00		13,000.00
292 Health Savings Accounts	945.00	822.93		1,767.93
Total Personnel Services – Employee Benefits	\$29,130.51	\$43,650.59		\$72,781.10
300 Purchased Professional and Technical Services				
322 Professional Educational Services – Ius	237,266.20	323,296.59	496,164.00	1,056,726.79
323 Professional Educational Services – Other Educational Agencies		3,204.00		3,204.00
330 Other Professional Services	70,868.26	70,868.26		141,736.52
Total Purchased Professional and Technical Services	\$308,134.46	\$397,368.85	\$496,164.00	\$1,201,667.31
500 Other Purchased Services				
561 Tuition To Other School Districts Within the State	142.78	140,081.18		140,223.96
567 Tuition To Approved Private Schools (APS) and PA Chartered Schools for the Deaf and Blind	12,185.06	12,185.07		24,370.13
569 Tuition – Other	10,360.00	114,510.13		124,870.13
594 IU Payment By Withholding for Institutionalized Children’s Programs – Special Classes	1,921.67	1,921.67		3,843.34
Total Other Purchased Services	\$24,609.51	\$268,698.05		\$293,307.56
600 Supplies				
610 General Supplies	35.70	35.69		71.39
Total Supplies	\$35.70	\$35.69		\$71.39
Total 1290 Special Programs - Other Support	\$398,997.04	\$767,843.08	\$496,164.00	\$1,663,004.12

General Fund (10)

1300 Vocational Education

100 Personnel Services – Salaries

100 Personnel Services – Salaries

	<u>Elementary</u>	<u>Secondary</u>	<u>Federal</u>	<u>Total</u>
		157,331.08		157,331.08
Total Personnel Services – Salaries		\$157,331.08		\$157,331.08

200 Personnel Services – Employee Benefits

210 Group Insurance – Contracted Provider

220 Social Security Contributions

230 PSERS Retirement Contributions

270 Group Insurance – Self-Insurance

280 Other Post-Employment Benefits (OPEB)

292 Health Savings Accounts

		91.44		91.44
		11,816.62		11,816.62
		53,492.68		53,492.68
		39,999.08		39,999.08
		7,000.00		7,000.00
		3,950.00		3,950.00
Total Personnel Services – Employee Benefits		\$116,349.82		\$116,349.82

500 Other Purchased Services

564 Tuition To Career and Technology Centers

		563,256.50		563,256.50
Total Other Purchased Services		\$563,256.50		\$563,256.50

600 Supplies

610 General Supplies

640 Books and Periodicals

		309.51		309.51
		4,634.26		4,634.26
Total Supplies		\$4,943.77		\$4,943.77
Total 1300 Vocational Education		\$841,881.17		\$841,881.17

General Fund (10)

1400 Other Instructional Programs – Elementary / Secondary

	<u>Elementary</u>	<u>Secondary</u>	<u>Federal</u>	<u>Total</u>
100 Personnel Services – Salaries				
100 Personnel Services – Salaries	53,300.00	71,495.37	875.00	125,670.37
Total Personnel Services – Salaries	\$53,300.00	\$71,495.37	\$875.00	\$125,670.37
200 Personnel Services – Employee Benefits				
210 Group Insurance – Contracted Provider	39.00	93.00		132.00
220 Social Security Contributions	3,976.73	5,332.44	65.47	9,374.64
230 PSERS Retirement Contributions	18,122.02	24,308.48	297.50	42,728.00
270 Group Insurance – Self-Insurance	17,316.77	36,929.94		54,246.71
292 Health Savings Accounts	1,387.50	1,987.50		3,375.00
Total Personnel Services – Employee Benefits	\$40,842.02	\$68,651.36	\$362.97	\$109,856.35
300 Purchased Professional and Technical Services				
323 Professional Educational Services – Other Educational Agencies		154,497.64		154,497.64
329 Professional Educational Services – Other	551.00	13,183.00		13,734.00
Total Purchased Professional and Technical Services	\$551.00	\$167,680.64		\$168,231.64
500 Other Purchased Services				
561 Tuition To Other School Districts Within the State	3,648.54	139,669.35		143,317.89
566 Tuition To Institutions of Higher Education and Technical Institutes		70,853.50		70,853.50
568 Tuition To Private Residential Rehabilitative Institutions (PRRI) [In-State] and Detention Centers		37,419.05		37,419.05
569 Tuition – Other	(6,055.84)	95,825.93		89,770.09
Total Other Purchased Services	(\$2,407.30)	\$343,767.83		\$341,360.53
600 Supplies				
640 Books and Periodicals		4,145.87		4,145.87
Total Supplies		\$4,145.87		\$4,145.87
Total 1400 Other Instructional Programs – Elementary / Secondary	\$92,285.72	\$655,741.07	\$1,237.97	\$749,264.76

General Fund (10)

1420 Summer School

	<u>Elementary</u>	<u>Secondary</u>	<u>Federal</u>	<u>Total</u>
100 Personnel Services – Salaries				
100 Personnel Services – Salaries	4,235.00	1,785.00	875.00	6,895.00
Total Personnel Services – Salaries	\$4,235.00	\$1,785.00	\$875.00	\$6,895.00
200 Personnel Services – Employee Benefits				
220 Social Security Contributions	316.03	133.75	65.47	515.25
230 PSERS Retirement Contributions	1,439.90	606.90	297.50	2,344.30
Total Personnel Services – Employee Benefits	\$1,755.93	\$740.65	\$362.97	\$2,859.55
Total 1420 Summer School	\$5,990.93	\$2,525.65	\$1,237.97	\$9,754.55

General Fund (10)

1430 Homebound Instruction

100 Personnel Services – Salaries

100 Personnel Services – Salaries

Total Personnel Services – Salaries

200 Personnel Services – Employee Benefits

220 Social Security Contributions

230 PSERS Retirement Contributions

Total Personnel Services – Employee Benefits

Total 1430 Homebound Instruction

Elementary

Secondary

Federal

Total

262.50

262.50

\$262.50

\$262.50

19.34

19.34

89.25

89.25

\$108.59

\$108.59

\$371.09

\$371.09

General Fund (10)

	<u>Elementary</u>	<u>Secondary</u>	<u>Federal</u>	<u>Total</u>
1440 Alternative Regular Education Programs				
100 Personnel Services – Salaries				
100 Personnel Services – Salaries	38,302.50	38,302.50		76,605.00
Total Personnel Services – Salaries	\$38,302.50	\$38,302.50		\$76,605.00
200 Personnel Services – Employee Benefits				
210 Group Insurance – Contracted Provider	18.00	18.00		36.00
220 Social Security Contributions	2,864.04	2,864.03		5,728.07
230 PSERS Retirement Contributions	13,022.87	13,022.87		26,045.74
270 Group Insurance – Self-Insurance	12,586.08	12,586.08		25,172.16
292 Health Savings Accounts	987.50	987.50		1,975.00
Total Personnel Services – Employee Benefits	\$29,478.49	\$29,478.48		\$58,956.97
300 Purchased Professional and Technical Services				
323 Professional Educational Services – Other Educational Agencies		154,497.64		154,497.64
329 Professional Educational Services – Other	551.00	13,183.00		13,734.00
Total Purchased Professional and Technical Services	\$551.00	\$167,680.64		\$168,231.64
500 Other Purchased Services				
561 Tuition To Other School Districts Within the State	3,648.54	139,669.35		143,317.89
568 Tuition To Private Residential Rehabilitative Institutions (PRRI) [In-State] and Detention Centers		37,419.05		37,419.05
569 Tuition – Other	(6,055.84)	95,825.93		89,770.09
Total Other Purchased Services	(\$2,407.30)	\$272,914.33		\$270,507.03
Total 1440 Alternative Regular Education Programs	\$65,924.69	\$508,375.95		\$574,300.64

General Fund (10)

1441 Adjudicated / Court-Placed Programs

	<u>Elementary</u>	<u>Secondary</u>	<u>Federal</u>	<u>Total</u>
100 Personnel Services – Salaries				
100 Personnel Services – Salaries	38,302.50	38,302.50		76,605.00
Total Personnel Services – Salaries	\$38,302.50	\$38,302.50		\$76,605.00
200 Personnel Services – Employee Benefits				
210 Group Insurance – Contracted Provider	18.00	18.00		36.00
220 Social Security Contributions	2,864.04	2,864.03		5,728.07
230 PSERS Retirement Contributions	13,022.87	13,022.87		26,045.74
270 Group Insurance – Self-Insurance	12,586.08	12,586.08		25,172.16
292 Health Savings Accounts	987.50	987.50		1,975.00
Total Personnel Services – Employee Benefits	\$29,478.49	\$29,478.48		\$58,956.97
500 Other Purchased Services				
561 Tuition To Other School Districts Within the State	3,648.54			
568 Tuition To Private Residential Rehabilitative Institutions (PRRI) [In-State] and Detention Centers		139,669.35		143,317.89
Total Other Purchased Services	\$3,648.54	\$177,088.40		\$180,736.94
Total 1441 Adjudicated / Court-Placed Programs	\$71,429.53	\$244,869.38		\$316,298.91

General Fund (10)

	<u>Elementary</u>	<u>Secondary</u>	<u>Federal</u>	<u>Total</u>
1442 Alternative Education Programs				
300 <u>Purchased Professional and Technical Services</u>				
323 Professional Educational Services – Other Educational Agencies		154,497.64		154,497.64
329 Professional Educational Services – Other	551.00	13,183.00		13,734.00
Total Purchased Professional and Technical Services	\$551.00	\$167,680.64		\$168,231.64
500 <u>Other Purchased Services</u>				
569 Tuition – Other	(6,055.84)	95,825.93		89,770.09
Total Other Purchased Services	(\$6,055.84)	\$95,825.93		\$89,770.09
Total 1442 Alternative Education Programs	(\$5,504.84)	\$263,506.57		\$258,001.73

General Fund (10)

	<u>Elementary</u>	<u>Secondary</u>	<u>Federal</u>	<u>Total</u>
1490 Additional Other Instructional Programs				
100 Personnel Services – Salaries				
100 Personnel Services – Salaries	10,500.00	31,407.87		41,907.87
Total Personnel Services – Salaries	\$10,500.00	\$31,407.87		\$41,907.87
200 Personnel Services – Employee Benefits				
210 Group Insurance – Contracted Provider	21.00	75.00		96.00
220 Social Security Contributions	777.32	2,334.66		3,111.98
230 PSERS Retirement Contributions	3,570.00	10,678.71		14,248.71
270 Group Insurance – Self-Insurance	4,730.69	24,343.86		29,074.55
292 Health Savings Accounts	400.00	1,000.00		1,400.00
Total Personnel Services – Employee Benefits	\$9,499.01	\$38,432.23		\$47,931.24
500 Other Purchased Services				
566 Tuition To Institutions of Higher Education and Technical Institutes		70,853.50		70,853.50
Total Other Purchased Services		\$70,853.50		\$70,853.50
600 Supplies				
640 Books and Periodicals		4,145.87		4,145.87
Total Supplies		\$4,145.87		\$4,145.87
Total 1490 Additional Other Instructional Programs	\$19,999.01	\$144,839.47		\$164,838.48

General Fund (10)

1500 Nonpublic School Programs

300 Purchased Professional and Technical Services

322 Professional Educational Services – lus

Total Purchased Professional and Technical Services

Total 1500 Nonpublic School Programs

	<u>Elementary</u>	<u>Secondary</u>	<u>Federal</u>	<u>Total</u>
			26,484.04	26,484.04
			\$26,484.04	\$26,484.04
			\$26,484.04	\$26,484.04

General Fund (10)

2000 Support Services

	<u>Total</u>
100 Personnel Services – Salaries	
100 Personnel Services – Salaries	
Total Personnel Services – Salaries	5,042,785.79
200 Personnel Services – Employee Benefits	\$5,042,785.79
210 Group Insurance – Contracted Provider	
220 Social Security Contributions	5,319.00
230 PSERS Retirement Contributions	376,915.04
240 Tuition Reimbursement	1,645,607.52
260 Workers' Compensation	134,866.25
270 Group Insurance – Self-Insurance	34,363.85
280 Other Post-Employment Benefits (OPEB)	1,329,131.83
291 Other Retirement Plans	49,729.09
292 Health Savings Accounts	52,475.20
Total Personnel Services – Employee Benefits	69,223.78
300 Purchased Professional and Technical Services	\$3,697,631.56
322 Professional Educational Services – Ius	
323 Professional Educational Services – Other Educational Agencies	4,057.47
329 Professional Educational Services – Other	2,065.29
330 Other Professional Services	73,645.97
340 Technical Services	383,245.89
350 Security / Safety Services	103,205.79
360 Employee Training and Development Services	34,559.07
Total Purchased Professional and Technical Services	35,879.27
400 Purchased Property Services	\$636,658.75
410 Cleaning Services	
420 Utility Services	22,594.31
430 Repairs and Maintenance Services	163,672.15
440 Rentals	387,631.65
460 Extermination Services	62,466.45
Total Purchased Property Services	21,664.09
500 Other Purchased Services	\$658,028.65
516 Student Transportation Services From the IU	
520 Insurance – General	23,878.22
521 Fire Insurance	694.00
522 Automotive Liability Insurance	79.30
523 General Property and Liability Insurance	4,500.00
530 Communications	167,021.00
549 Other Advertising/Public Relations	112,989.56
550 Printing and Binding	9,674.12
580 Travel	15,559.95
Total Other Purchased Services	6,114.20
600 Supplies	\$340,510.35
610 General Supplies	
620 Energy	365,520.42
	631,421.89

General Fund (10)

2000 Support Services

	<u>Total</u>
600 Supplies	4,165.76
630 Food	8,668.85
640 Books and Periodicals	267,787.69
650 Supplies & Fees – Technology Related	\$1,277,564.61
Total Supplies	
700 Property	50,673.22
736 Technology Equipment Lease	128,727.93
752 Capital Equipment – Original and Additional	19,205.23
762 Capitalized Equipment - Replacement	751,612.84
766 Capitalized Technology Equipment – Replacement	\$950,219.22
Total Property	
800 Other Objects	44,624.30
810 Dues and Fees	5,000.00
860 Grants To Municipal and Community Service Organizations	325.00
890 Miscellaneous Expenditures	\$49,949.30
Total Other Objects	\$12,653,348.23
Total 2000 Support Services	

General Fund (10)

2100 Support Services – Students

	<u>Elementary</u>	<u>Secondary</u>	<u>Federal</u>	<u>Total</u>
100 Personnel Services – Salaries				
100 Personnel Services – Salaries	187,593.78	367,083.25	162,720.33	905,371.64
Total Personnel Services – Salaries	\$187,593.78	\$367,083.25	\$162,720.33	\$905,371.64
200 Personnel Services – Employee Benefits				
210 Group Insurance – Contracted Provider	141.46	203.54	148.20	660.00
220 Social Security Contributions	15,538.43	26,297.49	11,804.24	67,885.53
230 PSERS Retirement Contributions	103,651.72	128,532.70	4,195.99	298,818.45
270 Group Insurance – Self-Insurance	35,751.05	90,792.64	58,142.78	246,937.56
280 Other Post-Employment Benefits (OPEB)	6,932.42	6,932.43		22,864.85
291 Other Retirement Plans		15,000.00		15,000.00
292 Health Savings Accounts	5,925.01	10,433.58		19,103.59
Total Personnel Services – Employee Benefits	\$167,940.09	\$278,192.38	\$74,291.21	\$671,269.98
300 Purchased Professional and Technical Services				
323 Professional Educational Services – Other Educational Agencies				2,065.29
329 Professional Educational Services – Other		552.22		552.22
330 Other Professional Services	13,675.00	13,675.00		27,350.00
Total Purchased Professional and Technical Services	\$13,675.00	\$14,227.22		\$29,967.51
500 Other Purchased Services				
580 Travel				477.77
Total Other Purchased Services				\$477.77
600 Supplies				
610 General Supplies		1,169.23	906.15	2,075.38
640 Books and Periodicals	3,531.07	746.50		4,277.57
650 Supplies & Fees – Technology Related	6,345.30	8,244.43		14,589.73
Total Supplies	\$9,876.37	\$10,160.16	\$906.15	\$20,942.68
800 Other Objects				
810 Dues and Fees				800.00
Total Other Objects				\$800.00
Total 2100 Support Services – Students	\$379,085.24	\$669,663.01	\$237,917.69	\$1,628,829.58

General Fund (10)

2120 Guidance Services

	<u>Elementary</u>	<u>Secondary</u>	<u>Federal</u>	<u>Total</u>
100 Personnel Services – Salaries				
100 Personnel Services – Salaries	32,252.70	290,591.37	162,720.33	485,564.40
Total Personnel Services – Salaries	\$32,252.70	\$290,591.37	\$162,720.33	\$485,564.40
200 Personnel Services – Employee Benefits				
210 Group Insurance – Contracted Provider	16.96	152.84	136.20	306.00
220 Social Security Contributions	2,422.98	21,854.36	11,804.24	36,081.58
230 PSERS Retirement Contributions	44,055.98	111,829.73	4,195.99	160,081.70
270 Group Insurance – Self-Insurance	3,320.94	72,869.55	53,784.32	129,974.81
280 Other Post-Employment Benefits (OPEB)	3,932.42	3,932.43		7,864.85
291 Other Retirement Plans		15,000.00		15,000.00
292 Health Savings Accounts	2,000.01	6,077.08		8,077.09
Total Personnel Services – Employee Benefits	\$55,749.29	\$231,715.99	\$69,920.75	\$357,386.03
600 Supplies				
610 General Supplies		1,169.23	906.15	2,075.38
Total Supplies		\$1,169.23	\$906.15	\$2,075.38
Total 2120 Guidance Services	\$88,001.99	\$523,476.59	\$233,547.23	\$845,025.81

General Fund (10)

2140 Psychological Services

	<u>Elementary</u>	<u>Secondary</u>	<u>Federal</u>	<u>Total</u>
100 Personnel Services – Salaries				
100 Personnel Services – Salaries	153,121.08	68,991.10		222,112.18
Total Personnel Services – Salaries	\$153,121.08	\$68,991.10		\$222,112.18
200 Personnel Services – Employee Benefits				
210 Group Insurance – Contracted Provider	108.00	36.00		144.00
220 Social Security Contributions	13,105.59	4,039.68		17,145.27
230 PSERS Retirement Contributions	59,595.71	14,883.73		74,479.44
270 Group Insurance – Self-Insurance	24,760.33	11,548.67		36,309.00
280 Other Post-Employment Benefits (OPEB)	3,000.00	3,000.00		6,000.00
292 Health Savings Accounts	1,387.50	987.50		2,375.00
Total Personnel Services – Employee Benefits	\$101,957.13	\$34,495.58		\$136,452.71
300 Purchased Professional and Technical Services				
330 Other Professional Services	13,675.00	13,675.00		27,350.00
Total Purchased Professional and Technical Services	\$13,675.00	\$13,675.00		\$27,350.00
600 Supplies				
640 Books and Periodicals	3,531.07	746.50		4,277.57
650 Supplies & Fees – Technology Related	6,345.30	8,244.43		14,589.73
Total Supplies	\$9,876.37	\$8,990.93		\$18,867.30
Total 2140 Psychological Services	\$278,629.58	\$126,152.61		\$404,782.19

General Fund (10)	<u>Elementary</u>	<u>Secondary</u>	<u>Federal</u>	<u>Total</u>
2150 Speech Pathology and Audiology Services				
100 Personnel Services – Salaries				
100 Personnel Services – Salaries	2,220.00	2,150.00		4,370.00
Total Personnel Services – Salaries	\$2,220.00	\$2,150.00		\$4,370.00
200 Personnel Services – Employee Benefits				
210 Group Insurance – Contracted Provider	16.50	7.50		24.00
220 Social Security Contributions	9.86	1.23		11.09
230 PSERS Retirement Contributions	0.03	0.02		0.05
270 Group Insurance – Self-Insurance	7,669.78	4,093.38		11,763.16
292 Health Savings Accounts	2,537.50	1,125.00		3,662.50
Total Personnel Services – Employee Benefits	\$10,233.67	\$5,227.13		\$15,460.80
Total 2150 Speech Pathology and Audiology Services	\$12,453.67	\$7,377.13		\$19,830.80

General Fund (10)

2160 Social Work Services

	<u>Elementary</u>	<u>Secondary</u>	<u>Federal</u>	<u>Total</u>
100 Personnel Services – Salaries				
100 Personnel Services – Salaries				114,073.86
Total Personnel Services – Salaries				\$114,073.86
200 Personnel Services – Employee Benefits				
210 Group Insurance – Contracted Provider			12.00	78.00
220 Social Security Contributions				8,684.26
230 PSERS Retirement Contributions				37,311.79
270 Group Insurance – Self-Insurance			4,358.46	15,058.39
292 Health Savings Accounts				800.00
Total Personnel Services – Employee Benefits			\$4,370.46	\$61,932.44
300 Purchased Professional and Technical Services				
323 Professional Educational Services – Other Educational Agencies				2,065.29
Total Purchased Professional and Technical Services				\$2,065.29
500 Other Purchased Services				
580 Travel				274.76
Total Other Purchased Services				\$274.76
800 Other Objects				
810 Dues and Fees				150.00
Total Other Objects				\$150.00
Total 2160 Social Work Services			\$4,370.46	\$178,496.35

General Fund (10)

	<u>Elementary</u>	<u>Secondary</u>	<u>Federal</u>	<u>Total</u>
2170 Student Accounting Services				
100 Personnel Services – Salaries				
100 Personnel Services – Salaries				73,900.42
Total Personnel Services – Salaries				\$73,900.42
200 Personnel Services – Employee Benefits				
210 Group Insurance – Contracted Provider				100.80
220 Social Security Contributions				5,561.11
230 PSERS Retirement Contributions				25,126.25
270 Group Insurance – Self-Insurance				51,551.16
280 Other Post-Employment Benefits (OPEB)				9,000.00
292 Health Savings Accounts				1,945.00
Total Personnel Services – Employee Benefits				\$93,284.32
500 Other Purchased Services				
580 Travel				203.01
Total Other Purchased Services				\$203.01
800 Other Objects				
810 Dues and Fees				650.00
Total Other Objects				\$650.00
Total 2170 Student Accounting Services				\$168,037.75

General Fund (10)

2190 Other Student Services

	<u>Elementary</u>	<u>Secondary</u>	<u>Federal</u>	<u>Total</u>
100 <u>Personnel Services – Salaries</u>				
100 Personnel Services – Salaries		5,350.78		5,350.78
Total Personnel Services – Salaries		\$5,350.78		\$5,350.78
200 <u>Personnel Services – Employee Benefits</u>				
210 Group Insurance – Contracted Provider		7.20		7.20
220 Social Security Contributions		402.22		402.22
230 PSERS Retirement Contributions		1,819.22		1,819.22
270 Group Insurance – Self-Insurance		2,281.04		2,281.04
292 Health Savings Accounts		2,244.00		2,244.00
Total Personnel Services – Employee Benefits		\$6,753.68		\$6,753.68
300 <u>Purchased Professional and Technical Services</u>				
329 Professional Educational Services – Other		552.22		552.22
Total Purchased Professional and Technical Services		\$552.22		\$552.22
Total 2190 Other Student Services		\$12,656.68		\$12,656.68

General Fund (10)

	<u>Elementary</u>	<u>Secondary</u>	<u>Federal</u>	<u>Total</u>
2200 Support Services – Instructional Staff				
100 Personnel Services – Salaries				
100 Personnel Services – Salaries	267,928.06	238,646.06	31,631.75	538,205.87
Total Personnel Services – Salaries	\$267,928.06	\$238,646.06	\$31,631.75	\$538,205.87
200 Personnel Services – Employee Benefits				
210 Group Insurance – Contracted Provider	330.00	312.00	18.02	660.02
220 Social Security Contributions	19,700.82	17,992.39	2,406.91	40,100.12
230 PSERS Retirement Contributions	92,387.50	80,141.46	4,912.64	177,441.60
240 Tuition Reimbursement	76,697.75	47,408.50		124,106.25
270 Group Insurance – Self-Insurance	59,842.04	26,921.84		86,763.88
292 Health Savings Accounts	3,225.00	1,400.00		4,625.00
Total Personnel Services – Employee Benefits	\$252,183.11	\$174,176.19	\$7,337.57	\$433,696.87
300 Purchased Professional and Technical Services				
322 Professional Educational Services – lus	162.50	162.50	3,732.47	4,057.47
329 Professional Educational Services – Other			5,500.00	5,500.00
330 Other Professional Services	428.00	428.00		856.00
350 Security / Safety Services	6,411.81	5,743.32		12,155.13
360 Employee Training and Development Services	12,495.54	12,745.54	5,971.69	31,212.77
Total Purchased Professional and Technical Services	\$19,497.85	\$19,079.36	\$15,204.16	\$53,781.37
500 Other Purchased Services				
580 Travel	1,021.44	382.08	2,218.87	3,622.39
Total Other Purchased Services	\$1,021.44	\$382.08	\$2,218.87	\$3,622.39
600 Supplies				
610 General Supplies	612.26	408.16		1,020.42
630 Food	289.22	289.21		578.43
640 Books and Periodicals	2,055.64	2,055.64		4,111.28
650 Supplies & Fees – Technology Related	2,397.50	2,397.50		4,795.00
Total Supplies	\$5,354.62	\$5,150.51		\$10,505.13
800 Other Objects				
810 Dues and Fees	137.50	137.50		275.00
Total Other Objects	\$137.50	\$137.50		\$275.00
Total 2200 Support Services – Instructional Staff	\$546,122.58	\$437,571.70	\$56,392.35	\$1,040,086.63

General Fund (10)

2250 School Library Services

	<u>Elementary</u>	<u>Secondary</u>	<u>Federal</u>	<u>Total</u>
100 Personnel Services – Salaries				
100 Personnel Services – Salaries	55,361.10	5,261.10		60,622.20
Total Personnel Services – Salaries	\$55,361.10	\$5,261.10		\$60,622.20
200 Personnel Services – Employee Benefits				
210 Group Insurance – Contracted Provider	30.00			30.00
220 Social Security Contributions	4,178.01	402.46		4,580.47
230 PSERS Retirement Contributions	18,822.77	1,788.78		20,611.55
270 Group Insurance – Self-Insurance	11,539.24			11,539.24
292 Health Savings Accounts	425.00			425.00
Total Personnel Services – Employee Benefits	\$34,995.02	\$2,191.24		\$37,186.26
600 Supplies				
610 General Supplies	197.68			197.68
640 Books and Periodicals	2,055.64	2,055.64		4,111.28
650 Supplies & Fees – Technology Related	297.50	297.50		595.00
Total Supplies	\$2,550.82	\$2,353.14		\$4,903.96
Total 2250 School Library Services	\$92,906.94	\$9,805.48		\$102,712.42

General Fund (10)

	<u>Elementary</u>	<u>Secondary</u>	<u>Federal</u>	<u>Total</u>
2260 Instruction and Curriculum Development Services				
100 Personnel Services – Salaries				
100 Personnel Services – Salaries	210,914.10	232,625.66	30,791.75	474,331.51
Total Personnel Services – Salaries	\$210,914.10	\$232,625.66	\$30,791.75	\$474,331.51
200 Personnel Services – Employee Benefits				
210 Group Insurance – Contracted Provider	300.00	312.00	18.02	630.02
220 Social Security Contributions	15,396.36	17,531.83	2,343.83	35,272.02
230 PSERS Retirement Contributions	73,002.78	78,094.52	4,627.04	155,724.34
270 Group Insurance – Self-Insurance	48,302.80	26,921.84		75,224.64
292 Health Savings Accounts	2,800.00	1,400.00		4,200.00
Total Personnel Services – Employee Benefits	\$139,801.94	\$124,260.19	\$6,988.89	\$271,051.02
300 Purchased Professional and Technical Services				
330 Other Professional Services	428.00	428.00		856.00
350 Security / Safety Services	6,411.81	5,743.32		12,155.13
Total Purchased Professional and Technical Services	\$6,839.81	\$6,171.32		\$13,011.13
500 Other Purchased Services				
580 Travel	382.08	382.08		764.16
Total Other Purchased Services	\$382.08	\$382.08		\$764.16
600 Supplies				
610 General Supplies	414.58	408.16		822.74
630 Food	20.72	20.71		41.43
650 Supplies & Fees – Technology Related	2,100.00	2,100.00		4,200.00
Total Supplies	\$2,535.30	\$2,528.87		\$5,064.17
800 Other Objects				
810 Dues and Fees	137.50	137.50		275.00
Total Other Objects	\$137.50	\$137.50		\$275.00
Total 2260 Instruction and Curriculum Development Services	\$360,610.73	\$366,105.62	\$37,780.64	\$764,496.99

General Fund (10)

2270 Instructional Staff Professional Development Services

	<u>Elementary</u>	<u>Secondary</u>	<u>Federal</u>	<u>Total</u>
100 Personnel Services – Salaries				
100 Personnel Services – Salaries			840.00	840.00
Total Personnel Services – Salaries			\$840.00	\$840.00
200 Personnel Services – Employee Benefits				
220 Social Security Contributions			63.08	63.08
230 PSERS Retirement Contributions			285.60	285.60
240 Tuition Reimbursement	76,897.75	47,408.50		124,106.25
Total Personnel Services – Employee Benefits	\$76,897.75	\$47,408.50	\$348.68	\$124,454.93
300 Purchased Professional and Technical Services				
322 Professional Educational Services – Ius	162.50	162.50		325.00
329 Professional Educational Services – Other			5,500.00	5,500.00
360 Employee Training and Development Services	12,495.54	12,745.54	5,971.69	31,212.77
Total Purchased Professional and Technical Services	\$12,658.04	\$12,908.04	\$11,471.69	\$37,037.77
500 Other Purchased Services				
580 Travel	639.36		2,218.87	2,858.23
Total Other Purchased Services	\$639.36		\$2,218.87	\$2,858.23
600 Supplies				
630 Food	268.50	268.50		537.00
Total Supplies	\$268.50	\$268.50		\$537.00
Total 2270 Instructional Staff Professional Development Services	\$90,263.65	\$60,585.04	\$14,879.24	\$165,727.93

General Fund (10)

2280 Nonpublic Support Services

300 Purchased Professional and Technical Services

322 Professional Educational Services – lus

Total Purchased Professional and Technical Services

Total 2280 Nonpublic Support Services

Elementary

Secondary

Federal

Total

3,732.47

3,732.47

\$3,732.47

\$3,732.47

\$3,732.47

\$3,732.47

General Fund (10)

2290 Other Instructional Staff Services

	<u>Elementary</u>	<u>Secondary</u>	<u>Federal</u>	<u>Total</u>
100 <u>Personnel Services – Salaries</u>				
100 Personnel Services – Salaries	1,652.86	759.30		2,412.16
Total Personnel Services – Salaries	\$1,652.86	\$759.30		\$2,412.16
200 <u>Personnel Services – Employee Benefits</u>				
220 Social Security Contributions	126.45	58.10		184.55
230 PSERS Retirement Contributions	561.95	258.16		820.11
Total Personnel Services – Employee Benefits	\$688.40	\$316.26		\$1,004.66
Total 2290 Other Instructional Staff Services	\$2,341.26	\$1,075.56		\$3,416.82

General Fund (10)

2300 Support Services – Administration

100 Personnel Services – Salaries

100 Personnel Services – Salaries

Total Personnel Services – Salaries

200 Personnel Services – Employee Benefits

210 Group Insurance – Contracted Provider

220 Social Security Contributions

230 PSERS Retirement Contributions

260 Workers' Compensation

270 Group Insurance – Self-Insurance

280 Other Post-Employment Benefits (OPEB)

291 Other Retirement Plans

292 Health Savings Accounts

Total Personnel Services – Employee Benefits

300 Purchased Professional and Technical Services

329 Professional Educational Services – Other

330 Other Professional Services

Total Purchased Professional and Technical Services

500 Other Purchased Services

520 Insurance – General

530 Communications

549 Other Advertising/Public Relations

550 Printing and Binding

580 Travel

Total Other Purchased Services

600 Supplies

610 General Supplies

630 Food

640 Books and Periodicals

Total Supplies

800 Other Objects

810 Dues and Fees

860 Grants To Municipal and Community Service Organizations

890 Miscellaneous Expenditures

Total Other Objects

Total 2300 Support Services – Administration

	<u>Elementary</u>	<u>Secondary</u>	<u>Federal</u>	<u>Total</u>
100 Personnel Services – Salaries	323,736.10	338,872.75		963,860.57
Total Personnel Services – Salaries	\$323,736.10	\$338,872.75		\$963,860.57
200 Personnel Services – Employee Benefits	474.75	510.75		1,495.50
210 Group Insurance – Contracted Provider	24,187.76	24,969.75		71,791.25
220 Social Security Contributions	108,049.20	113,620.15		313,992.17
230 PSERS Retirement Contributions	1,952.30	2,169.23		5,423.04
260 Workers' Compensation	108,196.94	146,762.81		314,795.36
270 Group Insurance – Self-Insurance	3,000.00	3,000.00		12,012.06
280 Other Post-Employment Benefits (OPEB)	950.00	3,100.00		5,799.96
291 Other Retirement Plans	4,309.37	7,609.38		16,418.75
292 Health Savings Accounts				
Total Personnel Services – Employee Benefits	\$251,120.32	\$301,742.07		\$741,728.09
300 Purchased Professional and Technical Services	33,796.88	33,796.87		67,593.75
329 Professional Educational Services – Other				254,350.92
330 Other Professional Services				
Total Purchased Professional and Technical Services	\$33,796.88	\$33,796.87		\$321,944.67
500 Other Purchased Services				694.00
520 Insurance – General				1,398.41
530 Communications				9,241.64
549 Other Advertising/Public Relations	984.08	8,092.72		10,227.20
550 Printing and Binding	353.71	327.50		681.21
580 Travel				
Total Other Purchased Services	\$1,337.79	\$8,420.22		\$22,242.46
600 Supplies	3,892.63	4,523.10		13,206.69
610 General Supplies	120.36	1,159.50		2,691.95
630 Food				280.00
640 Books and Periodicals				
Total Supplies	\$4,012.99	\$5,682.60		\$16,178.64
800 Other Objects	1,512.50	1,292.50		38,405.33
810 Dues and Fees				5,000.00
860 Grants To Municipal and Community Service Organizations	325.00			325.00
890 Miscellaneous Expenditures				
Total Other Objects	\$1,837.50	\$1,292.50		\$43,730.33
Total 2300 Support Services – Administration	\$615,841.58	\$689,807.01		\$2,109,684.76

General Fund (10)

2310 Board Services

	<u>Elementary</u>	<u>Secondary</u>	<u>Federal</u>	<u>Total</u>
100 <u>Personnel Services – Salaries</u>				
100 Personnel Services – Salaries				2,836.92
Total Personnel Services – Salaries				\$2,836.92
200 <u>Personnel Services – Employee Benefits</u>				
220 Social Security Contributions				212.65
230 PSERS Retirement Contributions				964.58
Total Personnel Services – Employee Benefits				\$1,177.23
300 <u>Purchased Professional and Technical Services</u>				
330 Other Professional Services				9,079.90
Total Purchased Professional and Technical Services				\$9,079.90
500 <u>Other Purchased Services</u>				
520 Insurance – General				100.00
549 Other Advertising/Public Relations				9,241.64
Total Other Purchased Services				\$9,341.64
600 <u>Supplies</u>				
610 General Supplies				2,572.68
630 Food				843.34
Total Supplies				\$3,416.02
800 <u>Other Objects</u>				
810 Dues and Fees				24,729.33
860 Grants To Municipal and Community Service Organizations				5,000.00
Total Other Objects				\$29,729.33
Total 2310 Board Services				\$55,581.04

General Fund (10)	<u>Elementary</u>	<u>Secondary</u>	<u>Federal</u>	<u>Total</u>
2320 Board Treasurer Services				
500 <u>Other Purchased Services</u>				594.00
520 Insurance – General				\$594.00
Total Other Purchased Services				\$594.00
Total 2320 Board Treasurer Services				\$594.00

General Fund (10)

2330 Tax Assessment and Collection Services

	<u>Elementary</u>	<u>Secondary</u>	<u>Federal</u>	<u>Total</u>
100 <u>Personnel Services – Salaries</u>				
100 Personnel Services – Salaries				22,087.00
Total Personnel Services – Salaries				\$22,087.00
200 <u>Personnel Services – Employee Benefits</u>				
220 Social Security Contributions				1,689.68
Total Personnel Services – Employee Benefits				\$1,689.68
300 <u>Purchased Professional and Technical Services</u>				
330 Other Professional Services				176,561.51
Total Purchased Professional and Technical Services				\$176,561.51
500 <u>Other Purchased Services</u>				
530 Communications				1,398.41
550 Printing and Binding				1,150.40
Total Other Purchased Services				\$2,548.81
Total 2330 Tax Assessment and Collection Services				\$202,887.00

General Fund (10)

2350 Legal and Accounting Services

300 Purchased Professional and Technical Services

330 Other Professional Services

Total Purchased Professional and Technical Services

Total 2350 Legal and Accounting Services

Elementary

Secondary

Federal

Total

68,709.51

\$68,709.51

\$68,709.51

General Fund (10)

2360 Office of the Superintendent / Executive Director Services

	<u>Elementary</u>	<u>Secondary</u>	<u>Federal</u>	<u>Total</u>
100 Personnel Services – Salaries				
100 Personnel Services – Salaries				196,707.80
Total Personnel Services – Salaries				\$196,707.80
200 Personnel Services – Employee Benefits				
210 Group Insurance – Contracted Provider				468.00
220 Social Security Contributions				14,847.14
230 PSERS Retirement Contributions				64,287.48
260 Workers’ Compensation				1,301.51
270 Group Insurance – Self-Insurance				25,986.35
280 Other Post-Employment Benefits (OPEB)				6,012.06
291 Other Retirement Plans				1,749.96
292 Health Savings Accounts				1,400.00
Total Personnel Services – Employee Benefits				\$116,052.50
600 Supplies				
610 General Supplies				886.83
630 Food				568.75
640 Books and Periodicals				280.00
Total Supplies				\$1,735.58
800 Other Objects				
810 Dues and Fees				10,871.00
Total Other Objects				\$10,871.00
Total 2360 Office of the Superintendent / Executive Director Services				\$325,366.88

General Fund (10)

	<u>Elementary</u>	<u>Secondary</u>	<u>Federal</u>	<u>Total</u>
2380 Office of the Principal Services				
100 Personnel Services – Salaries				
100 Personnel Services – Salaries	323,736.10	338,872.75		662,608.85
Total Personnel Services – Salaries	\$323,736.10	\$338,872.75		\$662,608.85
200 Personnel Services – Employee Benefits				
210 Group Insurance – Contracted Provider	474.75	510.75		985.50
220 Social Security Contributions	24,187.76	24,969.75		49,157.51
230 PSERS Retirement Contributions	108,049.20	113,620.15		221,669.35
260 Workers' Compensation	1,952.30	2,169.23		4,121.53
270 Group Insurance – Self-Insurance	108,196.94	146,762.81		254,959.75
280 Other Post-Employment Benefits (OPEB)	3,000.00	3,000.00		6,000.00
291 Other Retirement Plans	950.00	3,100.00		4,050.00
292 Health Savings Accounts	4,309.37	7,609.38		11,918.75
Total Personnel Services – Employee Benefits	\$251,120.32	\$301,742.07		\$552,862.39
300 Purchased Professional and Technical Services				
329 Professional Educational Services – Other	33,796.88	33,796.87		67,593.75
Total Purchased Professional and Technical Services	\$33,796.88	\$33,796.87		\$67,593.75
500 Other Purchased Services				
550 Printing and Binding	984.08	8,092.72		9,076.80
580 Travel	353.71	327.50		681.21
Total Other Purchased Services	\$1,337.79	\$8,420.22		\$9,758.01
600 Supplies				
610 General Supplies	3,892.63	4,523.10		8,415.73
630 Food	120.36	1,159.50		1,279.86
Total Supplies	\$4,012.99	\$5,682.60		\$9,695.59
800 Other Objects				
810 Dues and Fees	1,512.50	1,292.50		2,805.00
890 Miscellaneous Expenditures	325.00			325.00
Total Other Objects	\$1,837.50	\$1,292.50		\$3,130.00
Total 2380 Office of the Principal Services	\$615,841.58	\$689,807.01		\$1,305,648.59

General Fund (10)

	<u>Elementary</u>	<u>Secondary</u>	<u>Federal</u>	<u>Total</u>
2390 Other Administration Services				
100 Personnel Services – Salaries				
100 Personnel Services – Salaries				79,620.00
Total Personnel Services – Salaries				\$79,620.00
200 Personnel Services – Employee Benefits				
210 Group Insurance – Contracted Provider				42.00
220 Social Security Contributions				5,884.27
230 PSERS Retirement Contributions				27,070.76
270 Group Insurance – Self-Insurance				33,849.26
292 Health Savings Accounts				3,100.00
Total Personnel Services – Employee Benefits				\$69,946.29
600 Supplies				
610 General Supplies				1,331.45
Total Supplies				\$1,331.45
Total 2390 Other Administration Services				\$150,897.74

General Fund (10)

	<u>Elementary</u>	<u>Secondary</u>	<u>Federal</u>	<u>Total</u>
2400 Support Services – Pupil Health				
100 Personnel Services – Salaries				
100 Personnel Services – Salaries				228,600.62
Total Personnel Services – Salaries				\$228,600.62
200 Personnel Services – Employee Benefits				
210 Group Insurance – Contracted Provider				117.00
220 Social Security Contributions				16,815.71
230 PSERS Retirement Contributions				78,681.49
270 Group Insurance – Self-Insurance				75,921.17
280 Other Post-Employment Benefits (OPEB)				2,500.00
291 Other Retirement Plans				17,592.50
292 Health Savings Accounts				6,058.34
Total Personnel Services – Employee Benefits				\$197,686.21
300 Purchased Professional and Technical Services				
330 Other Professional Services				1,540.00
Total Purchased Professional and Technical Services				\$1,540.00
400 Purchased Property Services				
430 Repairs and Maintenance Services				433.40
440 Rentals				8,798.77
Total Purchased Property Services				\$9,232.17
600 Supplies				
610 General Supplies				2,417.35
Total Supplies				\$2,417.35
Total 2400 Support Services – Pupil Health				\$439,476.35

General Fund (10)

2420 Medical Services

300 Purchased Professional and Technical Services

330 Other Professional Services

Total Purchased Professional and Technical Services

400 Purchased Property Services

430 Repairs and Maintenance Services

440 Rentals

Total Purchased Property Services

600 Supplies

610 General Supplies

Total Supplies

Total 2420 Medical Services

Elementary

Secondary

Federal

Total

702.00

\$702.00

385.40

8,798.77

\$9,184.17

893.45

\$893.45

\$10,779.62

General Fund (10)	<u>Elementary</u>	<u>Secondary</u>	<u>Federal</u>	<u>Total</u>
2430 Dental Services				
600 <u>Supplies</u>				437.54
610 General Supplies				\$437.54
Total Supplies				\$437.54
Total 2430 Dental Services				

General Fund (10)	<u>Elementary</u>	<u>Secondary</u>	<u>Federal</u>	<u>Total</u>
2440 Nursing Services				
100 Personnel Services – Salaries				
100 Personnel Services – Salaries				228,600.62
Total Personnel Services – Salaries				\$228,600.62
200 Personnel Services – Employee Benefits				
210 Group Insurance – Contracted Provider				117.00
220 Social Security Contributions				16,815.71
230 PSERS Retirement Contributions				78,681.49
270 Group Insurance – Self-Insurance				75,921.17
280 Other Post-Employment Benefits (OPEB)				2,500.00
291 Other Retirement Plans				17,592.50
292 Health Savings Accounts				6,058.34
Total Personnel Services – Employee Benefits				\$197,686.21
400 Purchased Property Services				
430 Repairs and Maintenance Services				48.00
Total Purchased Property Services				\$48.00
600 Supplies				
610 General Supplies				1,086.36
Total Supplies				\$1,086.36
Total 2440 Nursing Services				\$427,421.19

General Fund (10)

2490 Other Health Services

300 Purchased Professional and Technical Services

	<u>Elementary</u>	<u>Secondary</u>	<u>Federal</u>	<u>Total</u>
--	-------------------	------------------	----------------	--------------

330 Other Professional Services				838.00
---------------------------------	--	--	--	--------

Total Purchased Professional and Technical Services				\$838.00
--	--	--	--	-----------------

Total 2490 Other Health Services				\$838.00
---	--	--	--	-----------------

General Fund (10)

2500 Support Services – Business

100 Personnel Services – Salaries

Elementary Secondary Federal Total

100 Personnel Services – Salaries

Total Personnel Services – Salaries 405,214.71

Total Personnel Services – Salaries **\$405,214.71**

200 Personnel Services – Employee Benefits

210 Group Insurance – Contracted Provider

220 Social Security Contributions 682.50

230 PSERS Retirement Contributions 29,468.93

270 Group Insurance – Self-Insurance 127,538.47

280 Other Post-Employment Benefits (OPEB) 125,984.57

291 Other Retirement Plans 9,200.00

292 Health Savings Accounts 7,850.00

Total Personnel Services – Employee Benefits 5,218.75

Total Personnel Services – Employee Benefits **\$305,943.22**

300 Purchased Professional and Technical Services

330 Other Professional Services

340 Technical Services 42,654.17

Total Purchased Professional and Technical Services 49,685.69

Total Purchased Professional and Technical Services **\$92,339.86**

400 Purchased Property Services

430 Repairs and Maintenance Services

440 Rentals 1,403.46

Total Purchased Property Services 19,405.38

Total Purchased Property Services **\$20,808.84**

500 Other Purchased Services

530 Communications

550 Printing and Binding 12,860.97

580 Travel 1,364.15

Total Other Purchased Services 1,271.46

Total Other Purchased Services **\$15,496.58**

600 Supplies

610 General Supplies

630 Food 19,006.16

650 Supplies & Fees – Technology Related 662.68

Total Supplies 21,975.00

Total Supplies **\$41,643.84**

700 Property

762 Capitalized Equipment - Replacement

Total Property 7,797.00

Total Property **\$7,797.00**

800 Other Objects

810 Dues and Fees

Total Other Objects 4,983.97

Total Other Objects **\$4,983.97**

Total 2500 Support Services – Business

\$894,228.02

General Fund (10)

2510 Fiscal Services

100 Personnel Services – Salaries

100 Personnel Services – Salaries

405,214.71

\$405,214.71

Total Personnel Services – Salaries

200 Personnel Services – Employee Benefits

210 Group Insurance – Contracted Provider

682.50

220 Social Security Contributions

29,468.93

230 PSERS Retirement Contributions

127,538.47

270 Group Insurance – Self-Insurance

125,984.57

280 Other Post-Employment Benefits (OPEB)

9,200.00

291 Other Retirement Plans

7,850.00

292 Health Savings Accounts

5,218.75

\$305,943.22

Total Personnel Services – Employee Benefits

300 Purchased Professional and Technical Services

330 Other Professional Services

42,654.17

340 Technical Services

48,674.69

\$91,328.86

Total Purchased Professional and Technical Services

400 Purchased Property Services

430 Repairs and Maintenance Services

1,403.46

440 Rentals

16,105.38

\$17,508.84

Total Purchased Property Services

500 Other Purchased Services

530 Communications

10.35

580 Travel

1,271.46

\$1,281.81

Total Other Purchased Services

600 Supplies

610 General Supplies

9,487.10

650 Supplies & Fees – Technology Related

21,975.00

\$31,462.10

Total Supplies

700 Property

762 Capitalized Equipment - Replacement

7,797.00

\$7,797.00

Total Property

800 Other Objects

810 Dues and Fees

4,983.97

\$4,983.97

Total Other Objects

\$865,520.51

Total 2510 Fiscal Services

General Fund (10)		Elementary	Secondary	Federal	Total
2511 Supervision of Fiscal Services - Head of Component					
100	<u>Personnel Services – Salaries</u>				
100	Personnel Services – Salaries				227,393.31
Total Personnel Services – Salaries					\$227,393.31
200	<u>Personnel Services – Employee Benefits</u>				
210	Group Insurance – Contracted Provider				430.50
220	Social Security Contributions				16,197.33
230	PSERS Retirement Contributions				69,172.42
270	Group Insurance – Self-Insurance				67,173.25
280	Other Post-Employment Benefits (OPEB)				3,200.00
291	Other Retirement Plans				7,850.00
292	Health Savings Accounts				3,418.75
Total Personnel Services – Employee Benefits					\$167,442.25
300	<u>Purchased Professional and Technical Services</u>				
330	Other Professional Services				4,375.00
Total Purchased Professional and Technical Services					\$4,375.00
500	<u>Other Purchased Services</u>				
530	Communications				10.35
580	Travel				1,271.46
Total Other Purchased Services					\$1,281.81
600	<u>Supplies</u>				
610	General Supplies				9,311.88
Total Supplies					\$9,311.88
800	<u>Other Objects</u>				
810	Dues and Fees				3,983.97
Total Other Objects					\$3,983.97
Total 2511 Supervision of Fiscal Services - Head of Component					\$413,788.22

General Fund (10)

	<u>Elementary</u>	<u>Secondary</u>	<u>Federal</u>	<u>Total</u>
2513 Receiving and Disbursing Funds Services				
100 Personnel Services – Salaries				
100 Personnel Services – Salaries				43,500.00
Total Personnel Services – Salaries				\$43,500.00
200 Personnel Services – Employee Benefits				
210 Group Insurance – Contracted Provider				72.00
220 Social Security Contributions				3,322.42
230 PSERS Retirement Contributions				13,089.96
270 Group Insurance – Self-Insurance				4,252.24
Total Personnel Services – Employee Benefits				\$20,736.62
Total 2513 Receiving and Disbursing Funds Services				\$64,236.62

General Fund (10)

2514 Payroll Services

	<u>Elementary</u>	<u>Secondary</u>	<u>Federal</u>	<u>Total</u>
100 Personnel Services – Salaries				
100 Personnel Services – Salaries				62,119.40
Total Personnel Services – Salaries				\$62,119.40
200 Personnel Services – Employee Benefits				
210 Group Insurance – Contracted Provider				72.00
220 Social Security Contributions				4,562.50
230 PSERS Retirement Contributions				20,727.49
270 Group Insurance – Self-Insurance				24,646.92
292 Health Savings Accounts				800.00
Total Personnel Services – Employee Benefits				\$50,808.91
300 Purchased Professional and Technical Services				
330 Other Professional Services				3,163.07
340 Technical Services				13,423.68
Total Purchased Professional and Technical Services				\$16,586.75
400 Purchased Property Services				
430 Repairs and Maintenance Services				1,403.46
Total Purchased Property Services				\$1,403.46
600 Supplies				
610 General Supplies				175.22
650 Supplies & Fees – Technology Related				21,975.00
Total Supplies				\$22,150.22
700 Property				
762 Capitalized Equipment - Replacement				7,797.00
Total Property				\$7,797.00
Total 2514 Payroll Services				\$160,865.74

General Fund (10)

2515 Financial Accounting Services

100 Personnel Services – Salaries

100 Personnel Services – Salaries

Total Personnel Services – Salaries

200 Personnel Services – Employee Benefits

210 Group Insurance – Contracted Provider

220 Social Security Contributions

230 PSERS Retirement Contributions

270 Group Insurance – Self-Insurance

280 Other Post-Employment Benefits (OPEB)

292 Health Savings Accounts

Total Personnel Services – Employee Benefits

300 Purchased Professional and Technical Services

330 Other Professional Services

340 Technical Services

Total Purchased Professional and Technical Services

400 Purchased Property Services

440 Rentals

Total Purchased Property Services

Total 2515 Financial Accounting Services

	<u>Elementary</u>	<u>Secondary</u>	<u>Federal</u>	<u>Total</u>
				72,202.00
				\$72,202.00
				108.00
				5,386.68
				24,548.60
				29,912.16
				6,000.00
				1,000.00
				\$66,955.44
				6,950.00
				35,251.01
				\$42,201.01
				16,105.38
				\$16,105.38
				\$197,463.83

General Fund (10)

2516 Internal Auditing Services

300 Purchased Professional and Technical Services

330 Other Professional Services

Total Purchased Professional and Technical Services

Total 2516 Internal Auditing Services

Elementary

Secondary

Federal

Total

28,166.10

\$28,166.10

\$28,166.10

LEA : 129546103 Pottsville Area SD

Printed 11/8/2024 3:14:09 PM

General Fund (10)

2519 Other Fiscal Services

800 Other Objects

810 Dues and Fees

Total Other Objects

Total 2519 Other Fiscal Services

Elementary

Secondary

Federal

Total

1,000.00

\$1,000.00

\$1,000.00

General Fund (10)

2520 Purchasing Services

300 Purchased Professional and Technical Services

340 Technical Services

Total Purchased Professional and Technical Services

1,011.00

\$1,011.00

400 Purchased Property Services

440 Rentals

Total Purchased Property Services

3,300.00

\$3,300.00

500 Other Purchased Services

530 Communications

550 Printing and Binding

Total Other Purchased Services

12,850.62

1,364.15

\$14,214.77

600 Supplies

610 General Supplies

630 Food

Total Supplies

9,519.06

662.68

\$10,181.74

Total 2520 Purchasing Services

\$28,707.51

Elementary

Secondary

Federal

Total

General Fund (10)

2600 Operation and Maintenance of Plant Services

100 Personnel Services – Salaries

100 Personnel Services – Salaries

1,099,010.60

Total Personnel Services – Salaries

\$1,099,010.60

200 Personnel Services – Employee Benefits

210 Group Insurance – Contracted Provider

1,156.80

220 Social Security Contributions

82,219.08

230 PSERS Retirement Contributions

364,341.08

260 Workers' Compensation

11,155.94

270 Group Insurance – Self-Insurance

407,399.28

280 Other Post-Employment Benefits (OPEB)

1,552.18

291 Other Retirement Plans

4,832.74

292 Health Savings Accounts

15,649.35

Total Personnel Services – Employee Benefits

\$888,306.45

300 Purchased Professional and Technical Services

330 Other Professional Services

47,104.80

340 Technical Services

11,680.00

350 Security / Safety Services

22,403.94

Total Purchased Professional and Technical Services

\$81,188.74

400 Purchased Property Services

410 Cleaning Services

22,594.31

420 Utility Services

163,672.15

430 Repairs and Maintenance Services

289,360.88

440 Rentals

2,489.94

460 Extermination Services

21,664.09

Total Purchased Property Services

\$499,781.37

500 Other Purchased Services

521 Fire Insurance

79.30

522 Automotive Liability Insurance

4,500.00

523 General Property and Liability Insurance

167,021.00

530 Communications

17,531.36

Total Other Purchased Services

\$189,131.66

600 Supplies

610 General Supplies

135,275.44

153,787.82

289,063.26

620 Energy

570,655.16

Total Supplies

\$135,275.44

\$153,787.82

\$859,718.42

700 Property

752 Capital Equipment – Original and Additional

128,727.93

762 Capitalized Equipment - Replacement

6,559.23

Total Property

\$135,287.16

800 Other Objects

810 Dues and Fees

160.00

General Fund (10)

2600 Operation and Maintenance of Plant Services

	<u>Elementary</u>	<u>Secondary</u>	<u>Federal</u>	<u>Total</u>
Total Other Objects				\$160.00
Total 2600 Operation and Maintenance of Plant Services	\$135,275.44	\$153,787.82		\$3,752,584.40

General Fund (10)

	<u>Elementary</u>	<u>Secondary</u>	<u>Federal</u>	<u>Total</u>
2610 Supervision of Operation and Maintenance of Plant Services				
100 <u>Personnel Services – Salaries</u>				
100 Personnel Services – Salaries				236,596.55
Total Personnel Services – Salaries				\$236,596.55
200 <u>Personnel Services – Employee Benefits</u>				
210 Group Insurance – Contracted Provider				288.00
220 Social Security Contributions				17,628.69
230 PSERS Retirement Contributions				80,085.92
270 Group Insurance – Self-Insurance				62,522.01
280 Other Post-Employment Benefits (OPEB)				1,600.00
292 Health Savings Accounts				2,300.00
Total Personnel Services – Employee Benefits				\$164,424.62
Total 2610 Supervision of Operation and Maintenance of Plant Services				\$401,021.17

General Fund (10)

2611 Supervision of Operation and Maintenance of Plant Services – Head of Component

	<u>Elementary</u>	<u>Secondary</u>	<u>Federal</u>	<u>Total</u>
100 Personnel Services – Salaries				
100 Personnel Services – Salaries				92,050.00
Total Personnel Services – Salaries				\$92,050.00
200 Personnel Services – Employee Benefits				
210 Group Insurance – Contracted Provider				144.00
220 Social Security Contributions				6,851.62
230 PSERS Retirement Contributions				30,940.00
270 Group Insurance – Self-Insurance				10,122.24
280 Other Post-Employment Benefits (OPEB)				1,600.00
292 Health Savings Accounts				700.00
Total Personnel Services – Employee Benefits				\$50,357.86
Total 2611 Supervision of Operation and Maintenance of Plant Services – Head of Component				\$142,407.86

General Fund (10)

	<u>Elementary</u>	<u>Secondary</u>	<u>Federal</u>	<u>Total</u>
2619 Supervision of Operation and Maintenance of Plant Services – All Other Supervision				
100 Personnel Services – Salaries				
100 Personnel Services – Salaries				144,546.55
Total Personnel Services – Salaries				\$144,546.55
200 Personnel Services – Employee Benefits				
210 Group Insurance – Contracted Provider				144.00
220 Social Security Contributions				10,777.07
230 PSERS Retirement Contributions				49,145.92
270 Group Insurance – Self-Insurance				52,399.77
292 Health Savings Accounts				1,600.00
Total Personnel Services – Employee Benefits				\$114,066.76
Total 2619 Supervision of Operation and Maintenance of Plant Services – All Other Supervision				\$258,613.31

General Fund (10)

2620 Operation of Buildings Services

100 Personnel Services – Salaries

Elementary Secondary Federal Total

100 Personnel Services – Salaries

Total Personnel Services – Salaries 621,921.17

200 Personnel Services – Employee Benefits

\$621,921.17

210 Group Insurance – Contracted Provider

624.00

220 Social Security Contributions

46,969.01

230 PSERS Retirement Contributions

210,036.34

260 Workers' Compensation

11,155.94

270 Group Insurance – Self-Insurance

282,507.18

291 Other Retirement Plans

4,832.74

292 Health Savings Accounts

11,549.35

Total Personnel Services – Employee Benefits

\$567,674.56

300 Purchased Professional and Technical Services

330 Other Professional Services

3,000.00

340 Technical Services

11,680.00

Total Purchased Professional and Technical Services

\$14,680.00

400 Purchased Property Services

410 Cleaning Services

22,594.31

420 Utility Services

163,672.15

430 Repairs and Maintenance Services

278,673.76

440 Rentals

2,489.94

460 Extermination Services

21,664.09

Total Purchased Property Services

\$489,094.25

500 Other Purchased Services

521 Fire Insurance

79.30

522 Automotive Liability Insurance

4,500.00

523 General Property and Liability Insurance

167,021.00

530 Communications

5,621.89

Total Other Purchased Services

\$177,222.19

600 Supplies

610 General Supplies

113,689.78

620 Energy

131,599.21

245,288.99

Total Supplies

530,650.70

\$113,689.78

\$131,599.21

\$775,939.69

700 Property

752 Capital Equipment – Original and Additional

128,727.93

762 Capitalized Equipment - Replacement

6,559.23

Total Property

\$135,287.16

800 Other Objects

810 Dues and Fees

160.00

Total Other Objects

\$160.00

Total 2620 Operation of Buildings Services

\$113,689.78

\$131,599.21

\$2,781,979.02

General Fund (10)

2630 Care and Upkeep of Grounds Services

	<u>Elementary</u>	<u>Secondary</u>	<u>Federal</u>	<u>Total</u>
100 Personnel Services – Salaries				97,467.42
100 Personnel Services – Salaries				\$97,467.42
Total Personnel Services – Salaries				
200 Personnel Services – Employee Benefits				144.00
210 Group Insurance – Contracted Provider				7,285.20
220 Social Security Contributions				35,476.12
230 PSERS Retirement Contributions				51,945.21
270 Group Insurance – Self-Insurance				(47.82)
280 Other Post-Employment Benefits (OPEB)				1,600.00
292 Health Savings Accounts				\$96,402.71
Total Personnel Services – Employee Benefits				
600 Supplies	15,151.90	16,462.82		31,614.72
610 General Supplies	\$15,151.90	\$16,462.82		\$31,614.72
Total Supplies				
	\$15,151.90	\$16,462.82		\$225,484.85
Total 2630 Care and Upkeep of Grounds Services				

General Fund (10)

2650 Vehicle Operation and Maintenance Services (Other Than Student Transportation Vehicles)

	<u>Elementary</u>	<u>Secondary</u>	<u>Federal</u>	<u>Total</u>
100 Personnel Services – Salaries				
100 Personnel Services – Salaries				9,976.97
Total Personnel Services – Salaries				\$9,976.97
200 Personnel Services – Employee Benefits				
210 Group Insurance – Contracted Provider				10.80
220 Social Security Contributions				731.66
230 PSERS Retirement Contributions				3,341.99
270 Group Insurance – Self-Insurance				3,887.28
Total Personnel Services – Employee Benefits				\$7,971.73
400 Purchased Property Services				
430 Repairs and Maintenance Services				3,535.41
Total Purchased Property Services				\$3,535.41
600 Supplies				
610 General Supplies				5,484.94
620 Energy	2,742.47	2,742.47		40,004.46
Total Supplies				\$45,489.40
Total 2650 Vehicle Operation and Maintenance Services (Other Than Student Transportation Vehicles)	\$2,742.47	\$2,742.47		\$66,973.51

General Fund (10)

	<u>Elementary</u>	<u>Secondary</u>	<u>Federal</u>	<u>Total</u>
2660 Safety and Security Services				
100 Personnel Services – Salaries				133,048.49
100 Personnel Services – Salaries				133,048.49
Total Personnel Services – Salaries				\$133,048.49
200 Personnel Services – Employee Benefits				90.00
210 Group Insurance – Contracted Provider				9,604.52
220 Social Security Contributions				35,400.71
230 PSERS Retirement Contributions				6,537.60
270 Group Insurance – Self-Insurance				200.00
292 Health Savings Accounts				51,832.83
Total Personnel Services – Employee Benefits				\$51,832.83
300 Purchased Professional and Technical Services				44,104.80
330 Other Professional Services				22,403.94
350 Security / Safety Services				66,508.74
Total Purchased Professional and Technical Services				\$66,508.74
400 Purchased Property Services				7,151.71
430 Repairs and Maintenance Services				7,151.71
Total Purchased Property Services				\$7,151.71
500 Other Purchased Services				11,909.47
530 Communications				11,909.47
Total Other Purchased Services				\$11,909.47
600 Supplies				6,674.61
610 General Supplies	3,691.29	2,983.32		6,674.61
Total Supplies	\$3,691.29	\$2,983.32		\$6,674.61
Total 2660 Safety and Security Services	\$3,691.29	\$2,983.32		\$277,125.85

General Fund (10)

2700 Student Transportation Services

	<u>Elementary</u>	<u>Secondary</u>	<u>Federal</u>	<u>Total</u>
100 Personnel Services – Salaries				
100 Personnel Services – Salaries			14,340.75	559,489.79
Total Personnel Services – Salaries			\$14,340.75	\$559,489.79
200 Personnel Services – Employee Benefits				
210 Group Insurance – Contracted Provider				133.20
220 Social Security Contributions			622.22	42,585.07
230 PSERS Retirement Contributions			1.36	178,713.21
260 Workers’ Compensation				17,784.87
270 Group Insurance – Self-Insurance				39,914.25
280 Other Post-Employment Benefits (OPEB)				1,600.00
291 Other Retirement Plans				1,400.00
292 Health Savings Accounts				1,150.00
Total Personnel Services – Employee Benefits			\$623.58	\$283,280.60
300 Purchased Professional and Technical Services				
330 Other Professional Services				1,998.00
Total Purchased Professional and Technical Services				\$1,998.00
400 Purchased Property Services				
430 Repairs and Maintenance Services				15,262.12
Total Purchased Property Services				\$15,262.12
500 Other Purchased Services				
516 Student Transportation Services From the IU				23,878.22
550 Printing and Binding				3,968.60
Total Other Purchased Services				\$27,846.82
600 Supplies				
610 General Supplies				24,170.20
620 Energy				60,766.73
650 Supplies & Fees – Technology Related				12,501.22
Total Supplies				\$97,438.15
700 Property				
762 Capitalized Equipment - Replacement				4,849.00
Total Property				\$4,849.00
Total 2700 Student Transportation Services			\$14,964.33	\$990,164.48

General Fund (10)

	<u>Elementary</u>	<u>Secondary</u>	<u>Federal</u>	<u>Total</u>
2710 Supervision of Student Transportation Services				
100 Personnel Services – Salaries				
100 Personnel Services – Salaries				39,747.63
Total Personnel Services – Salaries				\$39,747.63
200 Personnel Services – Employee Benefits				
210 Group Insurance – Contracted Provider				60.06
220 Social Security Contributions				3,234.51
230 PSERS Retirement Contributions				12,829.31
280 Other Post-Employment Benefits (OPEB)				1,600.00
Total Personnel Services – Employee Benefits				\$17,723.88
Total 2710 Supervision of Student Transportation Services				\$57,471.51

General Fund (10)

2711 Supervision of Student Transportation Services – Head of Component

	<u>Elementary</u>	<u>Secondary</u>	<u>Federal</u>	<u>Total</u>
100 <u>Personnel Services – Salaries</u>				
100 Personnel Services – Salaries				39,747.63
Total Personnel Services – Salaries				\$39,747.63
200 <u>Personnel Services – Employee Benefits</u>				
210 Group Insurance – Contracted Provider				60.06
220 Social Security Contributions				3,234.51
230 PSERS Retirement Contributions				12,829.31
280 Other Post-Employment Benefits (OPEB)				1,600.00
Total Personnel Services – Employee Benefits				\$17,723.88
Total 2711 Supervision of Student Transportation Services – Head of Component				\$57,471.51

General Fund (10)

2720 Vehicle Operation Services

	<u>Elementary</u>	<u>Secondary</u>	<u>Federal</u>	<u>Total</u>
100 Personnel Services – Salaries				
100 Personnel Services – Salaries			14,340.75	426,920.99
Total Personnel Services – Salaries			\$14,340.75	\$426,920.99
200 Personnel Services – Employee Benefits				5.46
210 Group Insurance – Contracted Provider			622.22	32,431.96
220 Social Security Contributions			1.36	135,620.98
230 PSERS Retirement Contributions				17,784.87
260 Workers' Compensation				16,359.84
270 Group Insurance – Self-Insurance				1,400.00
291 Other Retirement Plans				350.00
292 Health Savings Accounts				
Total Personnel Services – Employee Benefits			\$623.58	\$203,953.11
300 Purchased Professional and Technical Services				1,998.00
330 Other Professional Services				\$1,998.00
Total Purchased Professional and Technical Services				
400 Purchased Property Services				12,358.71
430 Repairs and Maintenance Services				\$12,358.71
Total Purchased Property Services				
500 Other Purchased Services				23,878.22
516 Student Transportation Services From the IU				3,968.60
550 Printing and Binding				\$27,846.82
Total Other Purchased Services				
600 Supplies				21,933.73
610 General Supplies				60,766.73
620 Energy				12,501.22
650 Supplies & Fees – Technology Related				\$95,201.68
Total Supplies			\$14,964.33	\$768,279.31
Total 2720 Vehicle Operation Services				

General Fund (10)

2740 Vehicle Servicing and Maintenance Services

	<u>Elementary</u>	<u>Secondary</u>	<u>Federal</u>	<u>Total</u>
100 Personnel Services – Salaries				
100 Personnel Services – Salaries				51,880.10
Total Personnel Services – Salaries				\$51,880.10
200 Personnel Services – Employee Benefits				
210 Group Insurance – Contracted Provider				56.16
220 Social Security Contributions				3,804.60
230 PSERS Retirement Contributions				17,378.07
270 Group Insurance – Self-Insurance				20,213.76
292 Health Savings Accounts				800.00
Total Personnel Services – Employee Benefits				\$42,252.59
400 Purchased Property Services				
430 Repairs and Maintenance Services				1,790.56
Total Purchased Property Services				\$1,790.56
700 Property				
762 Capitalized Equipment - Replacement				4,849.00
Total Property				\$4,849.00
Total 2740 Vehicle Servicing and Maintenance Services				\$100,772.25

General Fund (10)

2750 Nonpublic Transportation

100 Personnel Services – Salaries

100 Personnel Services – Salaries

Total Personnel Services – Salaries

200 Personnel Services – Employee Benefits

210 Group Insurance – Contracted Provider

220 Social Security Contributions

230 PSERS Retirement Contributions

270 Group Insurance – Self-Insurance

Total Personnel Services – Employee Benefits

400 Purchased Property Services

430 Repairs and Maintenance Services

Total Purchased Property Services

600 Supplies

610 General Supplies

Total Supplies

Total 2750 Nonpublic Transportation

Elementary

Secondary

Federal

Total

40,941.07

\$40,941.07

11.52

3,114.00

12,884.85

3,340.65

\$19,351.02

1,112.85

\$1,112.85

2,236.47

\$2,236.47

\$63,641.41

- General Fund (10)

2800 Support Services – Central

	<u>Elementary</u>	<u>Secondary</u>	<u>Federal</u>	<u>Total</u>
100 Personnel Services – Salaries				
100 Personnel Services – Salaries			47,565.00	343,031.99
Total Personnel Services – Salaries			\$47,565.00	\$343,031.99
200 Personnel Services – Employee Benefits				
210 Group Insurance – Contracted Provider			17.98	413.98
220 Social Security Contributions			3,622.77	26,049.35
230 PSERS Retirement Contributions			7,621.28	106,081.05
240 Tuition Reimbursement				10,760.00
270 Group Insurance – Self-Insurance				31,415.76
292 Health Savings Accounts				1,000.00
Total Personnel Services – Employee Benefits			\$11,262.03	\$175,720.14
300 Purchased Professional and Technical Services				
330 Other Professional Services			7,392.00	7,392.00
340 Technical Services				41,840.10
360 Employee Training and Development Services				4,666.50
Total Purchased Professional and Technical Services			\$7,392.00	\$53,898.60
400 Purchased Property Services				
430 Repairs and Maintenance Services			(600.00)	81,171.79
440 Rentals				31,772.36
Total Purchased Property Services			(\$600.00)	\$112,944.15
500 Other Purchased Services				
530 Communications				81,198.82
549 Other Advertising/Public Relations				432.48
580 Travel				61.37
Total Other Purchased Services				\$81,692.67
600 Supplies				
610 General Supplies				14,560.96
630 Food				232.70
650 Supplies & Fees – Technology Related				213,926.74
Total Supplies				\$228,720.40
700 Property				
736 Technology Equipment Lease				50,673.22
766 Capitalized Technology Equipment – Replacement				751,612.84
Total Property				\$802,286.06
Total 2800 Support Services – Central			\$65,619.03	\$1,798,294.01

General Fund (10)

	<u>Elementary</u>	<u>Secondary</u>	<u>Federal</u>	<u>Total</u>
2810 Planning, Research, Development and Evaluation Services				
100 Personnel Services – Salaries				269,216.99
100 Personnel Services – Salaries				269,216.99
Total Personnel Services – Salaries				\$269,216.99
200 Personnel Services – Employee Benefits				360.00
210 Group Insurance – Contracted Provider				20,455.80
220 Social Security Contributions				85,400.69
230 PSERS Retirement Contributions				26,150.76
270 Group Insurance – Self-Insurance				800.00
292 Health Savings Accounts				133,167.25
Total Personnel Services – Employee Benefits				\$133,167.25
300 Purchased Professional and Technical Services				41,840.10
340 Technical Services				41,840.10
Total Purchased Professional and Technical Services				\$41,840.10
400 Purchased Property Services				81,171.79
430 Repairs and Maintenance Services			(600.00)	31,772.36
440 Rentals				112,944.15
Total Purchased Property Services			(\$600.00)	\$112,944.15
500 Other Purchased Services				81,198.82
530 Communications				81,198.82
Total Other Purchased Services				\$81,198.82
600 Supplies				14,560.96
610 General Supplies				232.70
630 Food				213,926.74
650 Supplies & Fees – Technology Related				228,720.40
Total Supplies				\$228,720.40
700 Property				50,673.22
736 Technology Equipment Lease				751,612.84
766 Capitalized Technology Equipment – Replacement				802,286.06
Total Property				\$802,286.06
Total 2810 Planning, Research, Development and Evaluation Services			(\$600.00)	\$1,669,373.77

General Fund (10)

2830 Staff Services

	<u>Elementary</u>	<u>Secondary</u>	<u>Federal</u>	<u>Total</u>
100 <u>Personnel Services – Salaries</u>				
100 Personnel Services – Salaries				26,250.00
Total Personnel Services – Salaries				26,250.00
200 <u>Personnel Services – Employee Benefits</u>				
210 Group Insurance – Contracted Provider				36.00
220 Social Security Contributions				1,970.78
230 PSERS Retirement Contributions				8,924.98
240 Tuition Reimbursement				10,760.00
270 Group Insurance – Self-Insurance				5,265.00
292 Health Savings Accounts				200.00
Total Personnel Services – Employee Benefits				\$27,156.76
300 <u>Purchased Professional and Technical Services</u>				
330 Other Professional Services				
360 Employee Training and Development Services			5,544.00	5,544.00
Total Purchased Professional and Technical Services			5,544.00	4,666.50
500 <u>Other Purchased Services</u>				
549 Other Advertising/Public Relations				432.48
580 Travel				61.37
Total Other Purchased Services				493.85
Total 2830 Staff Services			5,544.00	\$64,111.11

General Fund (10)	<u>Elementary</u>	<u>Secondary</u>	<u>Federal</u>	<u>Total</u>
2832 Recruitment and Placement Services				
500 <u>Other Purchased Services</u>				432.48
549 Other Advertising/Public Relations				\$432.48
Total Other Purchased Services				\$432.48
Total 2832 Recruitment and Placement Services				\$432.48

General Fund (10)

2833 Staff Accounting Services

	<u>Elementary</u>	<u>Secondary</u>	<u>Federal</u>	<u>Total</u>
100 Personnel Services – Salaries				
100 Personnel Services – Salaries				26,250.00
Total Personnel Services – Salaries				\$26,250.00
200 Personnel Services – Employee Benefits				
210 Group Insurance – Contracted Provider				36.00
220 Social Security Contributions				1,970.78
230 PSERS Retirement Contributions				8,924.98
270 Group Insurance – Self-Insurance				5,265.00
292 Health Savings Accounts				200.00
Total Personnel Services – Employee Benefits				\$16,396.76
Total 2833 Staff Accounting Services				\$42,646.76

General Fund (10)	<u>Elementary</u>	<u>Secondary</u>	<u>Federal</u>	<u>Total</u>
2834 Staff Development Services – Non-Instructional, Certified Staff Only				
200 Personnel Services – Employee Benefits				3,715.00
240 Tuition Reimbursement				
Total Personnel Services – Employee Benefits				\$3,715.00
300 Purchased Professional and Technical Services				40.00
360 Employee Training and Development Services				
Total Purchased Professional and Technical Services				\$40.00
Total 2834 Staff Development Services – Non-Instructional, Certified Staff Only				\$3,755.00

General Fund (10)

2836 Staff Development Services – Non-Instructional, Non-Certified Staff Only

	<u>Elementary</u>	<u>Secondary</u>	<u>Federal</u>	<u>Total</u>
200 <u>Personnel Services – Employee Benefits</u>				
240 Tuition Reimbursement				7,045.00
Total Personnel Services – Employee Benefits				\$7,045.00
300 <u>Purchased Professional and Technical Services</u>				
360 Employee Training and Development Services				4,626.50
Total Purchased Professional and Technical Services				\$4,626.50
500 <u>Other Purchased Services</u>				
580 Travel				61.37
Total Other Purchased Services				\$61.37
Total 2836 Staff Development Services – Non-Instructional, Non-Certified Staff Only				\$11,732.87

General Fund (10)

2839 Other Staff Services

300 Purchased Professional and Technical Services

330 Other Professional Services

Total Purchased Professional and Technical Services

Total 2839 Other Staff Services

Elementary

Secondary

Federal

Total

5,544.00

5,544.00

\$5,544.00

\$5,544.00

\$5,544.00

\$5,544.00

General Fund (10)

2850 State and Federal Agency Liaison Services

	<u>Elementary</u>	<u>Secondary</u>	<u>Federal</u>	<u>Total</u>
100 <u>Personnel Services – Salaries</u>				
100 Personnel Services – Salaries			47,565.00	47,565.00
Total Personnel Services – Salaries			\$47,565.00	\$47,565.00
200 <u>Personnel Services – Employee Benefits</u>				
210 Group Insurance – Contracted Provider			17.98	17.98
220 Social Security Contributions			3,622.77	3,622.77
230 PSERS Retirement Contributions			7,621.28	11,755.38
Total Personnel Services – Employee Benefits			\$11,262.03	\$11,396.13
Total 2850 State and Federal Agency Liaison Services			\$58,827.03	\$62,961.13

General Fund (10)

2890 Other Support Services Central

300 Purchased Professional and Technical Services

330 Other Professional Services

Total Purchased Professional and Technical Services

Total 2890 Other Support Services Central

Elementary

Secondary

Federal

Total

1,848.00

1,848.00

\$1,848.00

\$1,848.00

\$1,848.00

\$1,848.00

General Fund (10)

3000 Operation of Non-Instructional Services

	<u>Total</u>
100 Personnel Services – Salaries	
100 Personnel Services – Salaries	496,749.16
Total Personnel Services – Salaries	\$496,749.16
200 Personnel Services – Employee Benefits	
210 Group Insurance – Contracted Provider	71.76
220 Social Security Contributions	38,431.21
230 PSERS Retirement Contributions	159,400.62
260 Workers' Compensation	2,634.02
270 Group Insurance – Self-Insurance	19,718.68
292 Health Savings Accounts	1,406.25
Total Personnel Services – Employee Benefits	\$221,662.54
300 Purchased Professional and Technical Services	
330 Other Professional Services	65,000.00
390 Other Purchased Professional and Technical Services	2,000.00
Total Purchased Professional and Technical Services	\$67,000.00
400 Purchased Property Services	
410 Cleaning Services	1,131.25
430 Repairs and Maintenance Services	9,813.10
440 Rentals	12,082.84
Total Purchased Property Services	\$23,027.19
500 Other Purchased Services	
580 Travel	3,621.00
Total Other Purchased Services	\$3,621.00
600 Supplies	
610 General Supplies	51,950.87
630 Food	9,990.15
640 Books and Periodicals	370.00
650 Supplies & Fees – Technology Related	10,909.00
Total Supplies	\$73,220.02
700 Property	
762 Capitalized Equipment - Replacement	92,488.78
Total Property	\$92,488.78
800 Other Objects	
810 Dues and Fees	1,729.59
890 Miscellaneous Expenditures	80,048.32
Total Other Objects	\$81,777.91
Total 3000 Operation of Non-Instructional Services	\$1,059,546.60

General Fund (10)	<u>Elementary</u>	<u>Secondary</u>	<u>Federal</u>	<u>Total</u>
3200 Student Activities				
100 Personnel Services – Salaries				470,329.47
100 Personnel Services – Salaries				
Total Personnel Services – Salaries				\$470,329.47
200 Personnel Services – Employee Benefits				71.76
210 Group Insurance – Contracted Provider				36,433.70
220 Social Security Contributions				154,398.34
230 PSERS Retirement Contributions				2,634.02
260 Workers' Compensation				19,718.68
270 Group Insurance – Self-Insurance				1,406.25
292 Health Savings Accounts				
Total Personnel Services – Employee Benefits				\$214,662.75
300 Purchased Professional and Technical Services				65,000.00
330 Other Professional Services				
Total Purchased Professional and Technical Services				\$65,000.00
400 Purchased Property Services				1,131.25
410 Cleaning Services				9,813.10
430 Repairs and Maintenance Services				12,082.84
440 Rentals				
Total Purchased Property Services				\$23,027.19
500 Other Purchased Services				3,621.00
580 Travel				
Total Other Purchased Services				\$3,621.00
600 Supplies				46,227.81
610 General Supplies				8,862.00
630 Food				370.00
640 Books and Periodicals				10,909.00
650 Supplies & Fees – Technology Related				
Total Supplies				\$66,368.81
700 Property				92,488.78
762 Capitalized Equipment - Replacement				
Total Property				\$92,488.78
800 Other Objects				1,729.59
810 Dues and Fees				300.00
890 Miscellaneous Expenditures				
Total Other Objects				\$2,029.59
Total 3200 Student Activities				\$937,527.59

General Fund (10)				
3300 Community Services		<u>Elementary</u>	<u>Secondary</u>	<u>Federal</u>
				<u>Total</u>
100	<u>Personnel Services – Salaries</u>			
100	Personnel Services – Salaries			4,532.50
	Total Personnel Services – Salaries			4,532.50
200	<u>Personnel Services – Employee Benefits</u>			
220	Social Security Contributions			337.61
230	PSERS Retirement Contributions			845.15
	Total Personnel Services – Employee Benefits			\$1,182.76
300	<u>Purchased Professional and Technical Services</u>			
390	Other Purchased Professional and Technical Services			2,000.00
	Total Purchased Professional and Technical Services			\$2,000.00
600	<u>Supplies</u>			
610	General Supplies			5,664.77
630	Food			1,128.15
	Total Supplies			\$6,792.92
	Total 3300 Community Services			\$14,508.18

General Fund (10)

3400 Scholarships and Awards

800 Other Objects

890 Miscellaneous Expenditures

Total Other Objects

Total 3400 Scholarships and Awards

Elementary

Secondary

Federal

Total

79,748.32

\$79,748.32

\$79,748.32

General Fund (10)

4000 Facilities Acquisition, Construction and Improvement Services

	<u>Total</u>
300 <u>Purchased Professional and Technical Services</u>	
330 Other Professional Services	19,383.99
Total Purchased Professional and Technical Services	\$19,383.99
400 <u>Purchased Property Services</u>	
430 Repairs and Maintenance Services	496,145.21
450 Construction Services	1,176,570.10
Total Purchased Property Services	\$1,672,715.31
700 <u>Property</u>	
762 Capitalized Equipment - Replacement	207,172.00
Total Property	\$207,172.00
Total 4000 Facilities Acquisition, Construction and Improvement Services	\$1,899,271.30

General Fund (10)

	<u>Elementary</u>	<u>Secondary</u>	<u>Federal</u>	<u>Total</u>
4600 Existing Building Improvement Services				
300 <u>Purchased Professional and Technical Services</u>			270.00	19,383.99
330 Other Professional Services				
Total Purchased Professional and Technical Services			\$270.00	\$19,383.99
400 <u>Purchased Property Services</u>				
430 Repairs and Maintenance Services			407,921.27	496,145.21
450 Construction Services				1,176,570.10
Total Purchased Property Services			\$407,921.27	\$1,672,715.31
700 <u>Property</u>				207,172.00
762 Capitalized Equipment - Replacement				
Total Property				\$207,172.00
Total 4600 Existing Building Improvement Services			\$408,191.27	\$1,899,271.30

General Fund (10)

5000 Other Expenditures and Financing Uses

800 Other Objects

830 Interest

Total Other Objects

162,657.06

\$162,657.06

900 Other Uses of Funds

910 Redemption of Principal

932 Capital Reserve Fund Transfers Applicable To Fund 32

Total Other Uses of Funds

1,401,910.22

750,000.00

\$2,151,910.22

Total 5000 Other Expenditures and Financing Uses

\$2,314,567.28

General Fund (10)

	<u>Elementary</u>	<u>Secondary</u>	<u>Federal</u>	<u>Total</u>
5100 Debt Service / Other Expenditures and Financing Uses				
800 <u>Other Objects</u>				162,657.06
830 Interest				
Total Other Objects				\$162,657.06
900 <u>Other Uses of Funds</u>				1,401,910.22
910 Redemption of Principal				
Total Other Uses of Funds				\$1,401,910.22
Total 5100 Debt Service / Other Expenditures and Financing Uses				\$1,564,567.28

General Fund (10)	<u>Elementary</u>	<u>Secondary</u>	<u>Federal</u>	<u>Total</u>
5110 Debt Service				
800 <u>Other Objects</u>				
830 Interest				152,119.02
Total Other Objects				\$152,119.02
900 <u>Other Uses of Funds</u>				
910 Redemption of Principal				1,167,348.66
Total Other Uses of Funds				\$1,167,348.66
Total 5110 Debt Service				\$1,319,467.68

General Fund (10)

	<u>Elementary</u>	<u>Secondary</u>	<u>Federal</u>	<u>Total</u>
5140 Leases and Other Right-to-Use Arrangements				
800 <u>Other Objects</u>				10,538.04
830 Interest				
Total Other Objects				\$10,538.04
900 <u>Other Uses of Funds</u>				234,561.56
910 Redemption of Principal				
Total Other Uses of Funds				\$234,561.56
Total 5140 Leases and Other Right-to-Use Arrangements				\$245,099.60

General Fund (10)

5200 Interfund Transfers – Out

900 Other Uses of Funds

932 Capital Reserve Fund Transfers Applicable To Fund 32

Total Other Uses of Funds

Total 5200 Interfund Transfers – Out

Elementary

Secondary

Federal

Total

750,000.00

\$750,000.00

\$750,000.00

General Fund (10)	<u>Elementary</u>	<u>Secondary</u>	<u>Federal</u>	<u>Total</u>
5230 Capital Projects Fund Transfers				
900 <u>Other Uses of Funds</u>				750,000.00
932 Capital Reserve Fund Transfers Applicable To Fund 32				\$750,000.00
Total Other Uses of Funds				\$750,000.00
Total 5230 Capital Projects Fund Transfers				\$750,000.00

	<u>General Fund(10)</u>	<u>Student Sponsored Activity Fund(21)</u>	<u>Public Purpose Trust(27)</u>	<u>Other Compt Approved (28)</u>	<u>Athletic / Activity(29)</u>
1000 Instruction					
1100 Regular Programs - Elementary / Secondary	18,052,231.50				
1200 Special Programs - Elementary / Secondary	9,139,402.13				
1300 Vocational Education	841,881.17				
1400 Other Instructional Programs - Elementary / Secondary	749,264.76				
1500 Nonpublic School Programs	26,484.04				
Total Instruction	\$28,809,263.60				
2000 Support Services					
2100 Support Services - Students	1,628,829.58				
2200 Support Services - Instructional Staff	1,040,086.63				
2300 Support Services - Administration	2,109,684.76				
2400 Support Services - Pupil Health	439,476.35				
2500 Support Services - Business	894,228.02				
2600 Operation and Maintenance of Plant Services	3,752,584.40				
2700 Student Transportation Services	990,164.48				
2800 Support Services - Central	1,798,294.01				
Total Support Services	\$12,653,348.23				
3000 Operation of Non-Instructional Services					
3200 Student Activities	937,527.59				
3300 Community Services	42,270.69				
3400 Scholarships and Awards	79,748.32				
Total Operation of Non-Instructional Services	\$1,059,546.60				
4000 Facilities Acquisition, Construction and Improvement Services					
4600 Existing Building Improvement Services	1,899,271.30				
Total Facilities Acquisition, Construction and Improvement Services	\$1,899,271.30				
5000 Other Expenditures and Financing Uses					
5100 Debt Service / Other Expenditures and Financing Uses	1,564,567.28				
5200 Interfund Transfers - Out	750,000.00				
Total Other Expenditures and Financing Uses	\$2,314,567.28				
TOTAL ACTUAL EXPENDITURES & OTHER FINANCING USES	\$46,735,997.01				

<u>Capital Reserve (690.</u>	<u>Capital Reserve (1431)(32)</u>	<u>Other Capital Projects</u>	<u>Debt Service(40)</u>	<u>Permanent(90)</u>
1850)(31)		Fund(39)		

1000 Instruction

- 1100 Regular Programs - Elementary / Secondary
- 1200 Special Programs - Elementary / Secondary
- 1300 Vocational Education
- 1400 Other Instructional Programs - Elementary / Secondary
- 1500 Nonpublic School Programs

Total Instruction

2000 Support Services

- 2100 Support Services - Students
- 2200 Support Services - Instructional Staff
- 2300 Support Services - Administration
- 2400 Support Services - Pupil Health
- 2500 Support Services - Business
- 2600 Operation and Maintenance of Plant Services
- 2700 Student Transportation Services
- 2800 Support Services - Central

Total Support Services

3000 Operation of Non-Instructional Services

- 3200 Student Activities
- 3300 Community Services
- 3400 Scholarships and Awards

Total Operation of Non-Instructional Services

4000 Facilities Acquisition, Construction and Improvement Services

- 4600 Existing Building Improvement Services

Total Facilities Acquisition, Construction and Improvement Services

5000 Other Expenditures and Financing Uses

- 5100 Debt Service / Other Expenditures and Financing Uses
- 5200 Interfund Transfers - Out

Total Other Expenditures and Financing Uses

TOTAL ACTUAL EXPENDITURES & OTHER FINANCING USES

	<u>Total</u>
1000 Instruction	
1100 Regular Programs - Elementary / Secondary	18,052,231.50
1200 Special Programs - Elementary / Secondary	9,139,402.13
1300 Vocational Education	841,881.17
1400 Other Instructional Programs - Elementary / Secondary	749,264.76
1500 Nonpublic School Programs	26,484.04
Total Instruction	\$28,809,263.60
2000 Support Services	
2100 Support Services - Students	1,628,829.58
2200 Support Services - Instructional Staff	1,040,086.63
2300 Support Services - Administration	2,109,684.76
2400 Support Services - Pupil Health	439,476.35
2500 Support Services - Business	894,228.02
2600 Operation and Maintenance of Plant Services	3,752,584.40
2700 Student Transportation Services	990,164.48
2800 Support Services - Central	1,798,294.01
Total Support Services	\$12,653,348.23
3000 Operation of Non-Instructional Services	
3200 Student Activities	937,527.59
3300 Community Services	42,270.69
3400 Scholarships and Awards	79,748.32
Total Operation of Non-Instructional Services	\$1,059,546.60
4000 Facilities Acquisition, Construction and Improvement Services	
4600 Existing Building Improvement Services	1,899,271.30
Total Facilities Acquisition, Construction and Improvement Services	\$1,899,271.30
5000 Other Expenditures and Financing Uses	
5100 Debt Service / Other Expenditures and Financing Uses	1,564,567.28
5200 Interfund Transfers - Out	750,000.00
Total Other Expenditures and Financing Uses	\$2,314,567.28
TOTAL ACTUAL EXPENDITURES & OTHER FINANCING USES	\$46,735,997.01

PSERS Salary Data (Salary Data should relate to the General Fund only)

Amount Description	Amount
Total Salary Base for salaries subject to PSERS withholding	16,597,675.04
Total Federally Funded salaries subject to PSERS withholding	1,327,166.36
	<hr/>

Title I Expenditure Data

Amount Description	Amount
Expenditures Funded with Current Title I Funds	1,020,785.16
Total Title I Expenditure Data	<hr/> \$1,020,785.16 <hr/>

Title IV Revenue Data

Amount Description	Amount
Revenue from Title IV-A-1: Student Support and Academic Enrichment Grants	93,277.71
	<hr/>

1.	<u>Current Special Education Expenditures within Function 1000</u> See list of exclusions in the note below.	5,152,284.77
2.	<u>Current Special Education Expenditures within Function 2000</u> See list of exclusions in the note below.	2,342,089.67
2A.	<u>Current Special Education Expenditures within Sub-Function 2100</u> This data should also be included in line 2 above. See list of exclusions in the note below.	1,344,391.49
2B.	<u>Current Special Education Expenditures within Sub-Function 2200</u> This data should also be included in line 2 above. See list of exclusions in the note below.	769,386.32
2C.	<u>Current Special Education Expenditures within Sub-Function 2700</u> This data should also be included in line 2 above. See list of exclusions in the note below.	228,311.86
3.	<u>Current Special Education Expenditures within Sub-Function 3100</u> See list of exclusions in the note below.	
4.	<u>Current Special Education Expenditures within Sub-Function 3200</u> See list of exclusions in the note below.	

Note: The Current Special Education Expenditure amounts for each line should be calculated as follows:

- * Include the total expenditures for special education costs from all governmental funds and the food service fund 51 for the function/sub-function requested
- * Exclude data from sub-functions: 1243,1450,1500,1600,1807,2280,2450,2750,2990
- * Exclude data from objects: 322,511,512,516,561,562,564,566,592,593,594,595,596,597,700,830,899

Benefits for Staff Relative to Collective Bargaining Agreements

	OBJECT	COVERED	NOT COVERED	TOTAL
10 General Fund	211 Medical Insurance			
	212 Dental Insurance			
	215 Eye Care Insurance			
	216 Prescription Insurance			
	271 Self-Insurance Medical Benefits	4,523,133.64		4,523,133.64
	272 Self-Insurance Dental Benefits	203,330.93		203,330.93
	275 Self-Insurance Eye Care Benefits	17,792.08		17,792.08
	276 Self-Insurance Prescription Benefits			
	FUND TOTAL		\$4,744,256.65	
50 Enterprise Fund	No Self Insurance data to report			
	211 Medical Insurance			
	212 Dental Insurance			
	215 Eye Care Insurance			
	216 Prescription Insurance			
	271 Self-Insurance Medical Benefits			
	272 Self-Insurance Dental Benefits			
	275 Self-Insurance Eye Care Benefits			
	276 Self-Insurance Prescription Benefits			
FUND TOTAL				
60 Internal Service Fund	No Self Insurance data to report			
	211 Medical Insurance			
	212 Dental Insurance			
	215 Eye Care Insurance			
	216 Prescription Insurance			
	271 Self-Insurance Medical Benefits			
	272 Self-Insurance Dental Benefits			
	275 Self-Insurance Eye Care Benefits			
	276 Self-Insurance Prescription Benefits			
FUND TOTAL				
Total of All Funds		\$4,744,256.65		\$4,744,256.65

LEA : 129546103 Pottsville Area SD

Printed 11/8/2024 3:14:44 PM

Function	Special Education (Prior Year)	Nonspecial Education (Prior Year)	Total (Prior Year)	Special Education (Current Year)	Nonspecial Education (Current Year)	Total (Current Year)
2120 Guidance Services	146,045.76	534,502.95	680,548.71	201,045.00	571,868.84	772,913.84
2140 Psychological Services	33,752.48	123,528.39	157,280.87	44,752.00	240,020.09	284,772.09
2150 Speech Pathology and Audiology Services		908.00	908.00			
2160 Social Work Services	62,953.63	235,412.38	298,366.01	48,194.01	130,302.34	178,496.35
2260 Instruction and Curriculum Development Services	136,576.18	499,845.91	636,422.09	186,414.19	578,082.80	764,496.99
2350 Legal and Accounting Services	15,499.56	56,725.82	72,225.38	18,551.57	50,157.94	68,709.51
2420 Medical Services	1,406.64	15,399.67	16,806.31	1,910.50	8,869.12	10,779.62
2440 Nursing Services	88,850.75	325,178.82	414,029.57	115,403.72	312,017.47	427,421.19
2700 Student Transportation Services	265,614.10	506,119.82	771,733.92	224,572.29	607,176.93	831,749.22
Total	\$750,699.10	\$2,297,621.76	\$3,048,320.86	\$840,843.28	\$2,498,495.53	\$3,339,338.81

(PRINCIPAL AMOUNTS ONLY)

GOVERNMENTAL FUNDS/ ACTIVITIES

	Short-Term Borrowing	General Obligation Bonds/Notes	Authority Building Obligations	Leases, Other Right to Use Arrangements	Extended Term Financing Agreements	Other Long Term Debt/Liabilities	OPEB, Comp Abs, Net Pension Liab	Total
1. Debt at Beginning of Fiscal Year		4,675,000.00		504,594.19	1,606,198.99		48,836,844.25	55,622,637.43
2. Additional Debt Incurred During Year				50,673.22	0.50		156,619.00	207,292.72
3. Retirements and Repayments		500,000.00		234,561.56	621,681.66		35,870.50	1,392,113.72
4. Debt at End of Fiscal Year		4,175,000.00		320,705.85	984,517.83		48,957,592.75	54,437,816.43
5. Accreted Interest at End Of Fiscal Year								
6. Total Debt and Accreted Interest		4,175,000.00		320,705.85	984,517.83		48,957,592.75	54,437,816.43
7. Current Portion P&I - Due within 1 year		1,618,556.99		232,127.12	332,755.32		75,000.00	2,258,439.43
8. Interest Paid during current fiscal year		125,065.83		10,538.04	27,052.99			162,656.86

(PRINCIPAL AMOUNTS ONLY)

PROPRIETARY FUNDS

	Short-Term Borrowing	General Obligation Bonds/Notes	Authority Building Obligations	Leases, Other Right to Use Arrangements	Extended Term Financing Agreements	Other Long Term Debt/Liabilities	OPEB, Comp Abs, Net Pension Liab	Total
1. Debt at Beginning of Fiscal Year							1,989,974.00	1,989,974.00
2. Additional Debt Incurred During Year							6,589.00	6,589.00
3. Retirements and Repayments								
4. Debt at End of Fiscal Year							1,996,563.00	1,996,563.00
5. Accreted Interest at End Of Fiscal Year								
6. Total Debt and Accreted Interest							1,996,563.00	1,996,563.00
7. Current Portion P&I - Due within 1 year								
8. Interest Paid during current fiscal year								

Total Principal and Interest Payments Made by Your School - All Funds

Function	Fund		Principal (910)	Principal (920)	Interest (830)	Total (Principal +Interest)	Misc Other Uses (990)
5110	10	General Fund	1,167,348.66		152,119.02	1,319,467.68	
5110	20	Special Revenue Funds					
5110	30	Capital Projects Funds					
5110	40	Debt Service Fund					
5110	90	Permanent Fund					
5120	10	General Fund					
5120	20	Special Revenue Funds					
5120	30	Capital Projects Funds					
5120	40	Debt Service Fund					
5140	10	General Fund	234,561.56		10,538.04	245,099.60	
5140	20	Special Revenue Funds					
5140	30	Capital Projects Funds					
5140	40	Debt Service Fund					
5140	90	Permanent Fund					
Total Debt Payments - Governmental Funds			\$1,401,910.22		\$162,657.06	\$1,564,567.28	

Function	Fund		Principal (910)	Principal (920)	Interest (830)	Total (Principal +Interest)
5110	50	Enterprise Fund				
5110	60	Internal Service Fund				
5120	50	Enterprise Fund				
5120	60	Internal Service Fund				
5140	50	Enterprise Fund				
5140	60	Internal Service Fund				
Total Debt Payments - Proprietary Funds						

Debt Details

Governmental Funds/ Activities

Debt Category	Debt Issue Date (MM/YYYY)	Principal Amounts Only				Current Portion Due Within One Year (Principal and Interest)	Interest Paid During Fiscal Year
		Debt at Beginning of Fiscal Year	Additions	Reductions / Repayments	Debt at End of Fiscal Year		
General Obligation Bonds/Notes – CIB	03/2021	3,675,000.00		500,000.00	3,175,000.00	614,575.05	99,224.19
General Obligation Bonds/Notes – CIB	08/2021	1,000,000.00			1,000,000.00	1,003,981.94	25,841.64
Leases and Other Right to Use Arrangements		504,594.19	50,673.22	234,561.56	320,705.85	232,127.12	10,538.04
Extended Term Financing Agreements		1,606,198.99	0.50	621,681.66	984,517.83	332,755.32	27,052.99
Net Pension Liability		45,091,780.00	156,619.00		45,248,399.00		
Other Post-Employment Benefits (OPEB)		3,065,973.00		3,088.00	3,062,885.00		
Compensated Absences		679,091.25		32,782.50	646,308.75	75,000.00	
Totals for Debt Entered:		\$55,622,637.43	\$207,292.72	\$1,392,113.72	\$54,437,816.43	\$2,258,439.43	\$162,656.86

Bond Details

Proprietary Funds

Debt Category	Debt Issue Date (MM/YYYY)	Principal Amounts Only				Current Portion Due Within One Year (Principal and Interest)	Interest Paid During Fiscal Year
		Debt at Beginning of Fiscal Year	Additions	Reductions / Repayments	Debt at End of Fiscal Year		
Net Pension Liability		88,754.00	208.00		88,962.00		
Other Post-Employment Benefits (OPEB)		1,901,220.00	6,381.00		1,907,601.00		
Totals for Debt Entered:		\$1,989,974.00	\$6,589.00		\$1,996,563.00		

General Fund (10)

Section 1: Tuition/Purchased Services as Reported within Expenditure Detail	Amount
Tuition Reported in General Fund Expenditures 1000-560	5,211,380.25
Purchased Services in General Fund Expenditures 1000-594 and 1000-597	3,843.34
Section 1 Total	\$5,215,223.59

Section 2: Tuition Paid to Institution Types During Fiscal Year	Tuition Paid For Nonspecial Education	Tuition Paid For Special Education	Total
1 1306 Institutions			
2 Institutionalized Children's Programs		3,843.34	3,843.34
3 Juveniles Incarcerated in Adult Facilities	141,663.10	73,559.12	215,222.22
4 Residential Treatment Facilities			
5 Other Local Education Agencies	111,175.13	133,166.04	244,341.17
6 Brick and Mortar Charter Schools	748,627.87	437,875.93	1,186,503.80
7 Cyber Charter Schools	915,375.91	1,807,295.10	2,722,671.01
8 Career and Technology Centers	805,223.00		805,223.00
9 Approved Private Schools			
10 PA Chartered Schools for the Deaf and Blind			
11 Private Residential Rehabilitative Institutions	37,419.05		37,419.05
12 Juvenile Detention Centers			
13 Special Program Jointures			
14 Other Tuition Not Included Elsewhere In This Section			
Section 2 Total	\$2,759,484.06	\$2,455,739.53	\$5,215,223.59

- 1 . Student Transportation Services for Educational Field Trips

- 2 . Student Transportation Services for Student Activities 16,790.00

- 3 . Rental of Vehicles for Student Transportation Services

- 4 . Capital Reserve Funds

Include only district-owned transportation expenditures paid from State or local money.
DO NOT include federal expenditures or payments to contract service providers.
Contracted transportation services should not be recorded on this schedule.

Food Service / Cafeteria Operations Fund (51)

3000 Operation of Non-Instructional Services

	<u>Total</u>
100 Personnel Services – Salaries	
100 Personnel Services – Salaries	688,657.00
Total Personnel Services – Salaries	\$688,657.00
200 Personnel Services – Employee Benefits	
210 Group Insurance – Contracted Provider	591.00
220 Social Security Contributions	57,496.75
230 PSERS Retirement Contributions	237,047.47
270 Group Insurance – Self-Insurance	216,804.78
280 Other Post-Employment Benefits (OPEB)	(21,819.00)
291 Other Retirement Plans	(131,417.00)
292 Health Savings Accounts	9,125.00
299 All Other Employee Benefits	2,500.00
Total Personnel Services – Employee Benefits	\$370,329.00
500 Other Purchased Services	
570 Food Service Management	20,472.09
580 Travel	343.91
Total Other Purchased Services	\$20,816.00
600 Supplies	
610 General Supplies	83,386.66
630 Food	831,008.79
650 Supplies & Fees – Technology Related	2,569.95
Total Supplies	\$916,965.40
700 Property	
740 Depreciation	1,458.97
Total Property	\$1,458.97
800 Other Objects	
800 Other Objects	516.00
Total Other Objects	\$516.00
Total 3000 Operation of Non-Instructional Services	\$1,998,742.37

Food Service / Cafeteria Operations Fund (51)

	<u>Elementary</u>	<u>Secondary</u>	<u>Federal</u>	<u>Total</u>
3100 Food Services				
100 Personnel Services – Salaries				
100 Personnel Services – Salaries			89.09	688,657.00
Total Personnel Services – Salaries			\$89.09	\$688,657.00
200 Personnel Services – Employee Benefits				
210 Group Insurance – Contracted Provider				591.00
220 Social Security Contributions			6.81	57,496.75
230 PSERS Retirement Contributions			30.29	237,047.47
270 Group Insurance – Self-Insurance				216,804.78
280 Other Post-Employment Benefits (OPEB)				(21,819.00)
291 Other Retirement Plans				(131,417.00)
292 Health Savings Accounts				9,125.00
299 All Other Employee Benefits				2,500.00
Total Personnel Services – Employee Benefits			\$37.10	\$370,329.00
500 Other Purchased Services				
570 Food Service Management				20,472.09
580 Travel				343.91
Total Other Purchased Services				\$20,816.00
600 Supplies				
610 General Supplies				83,386.66
630 Food				831,008.79
650 Supplies & Fees – Technology Related				2,569.95
Total Supplies				\$916,965.40
700 Property				
740 Depreciation				1,458.97
Total Property				\$1,458.97
800 Other Objects				
800 Other Objects				516.00
Total Other Objects				\$516.00
Total 3100 Food Services			\$126.19	\$1,998,742.37

	<u>Food Service(51)</u>	<u>Child Care Operations(52)</u>	<u>Other Enterprise(58)</u>	<u>Internal Service(60)</u>	<u>Total</u>
3000 <u>Operation of Non-Instructional Services</u>					
3100 Food Services	1,998,742.37				1,998,742.37
Total Operation of Non-Instructional Services	\$1,998,742.37				\$1,998,742.37
TOTAL ACTUAL EXPENDITURES & OTHER FINANCING USES	\$1,998,742.37				\$1,998,742.37

LEA : 129546103 Pottsville Area SD

Printed 11/8/2024 3:15:07 PM

Fund	School	School Number	Local Personnel	Local Nonpersonnel	State Personnel	State Nonpersonnel	Federal Personnel	Federal Nonpersonnel	Total Explanation
10									
	Clarke El Ctr	3915	9,277,573.08	1,596,721.11	343,702.46	4,019.13	636,377.64	76,645.08	11,935,038.50
	Lengel MS	5265	7,432,877.79	1,279,238.95	275,362.78	3,219.99	509,844.24	61,405.44	9,561,949.19
	Pottsville Area HS	3924	10,340,571.98	1,779,669.04	383,082.94	4,479.63	709,292.04	85,426.86	13,302,522.49
Total			27,051,022.85	4,655,629.10	1,002,148.18	11,718.75	1,855,513.92	223,477.38	34,799,510.18

	<u>Nonspecial Education</u>	<u>Special Education</u>
1000 Instruction		
1400 Other Instructional Programs - Elementary / Secondary	81,337.00	54,224.00
Total Instruction	\$81,337.00	\$54,224.00
TOTAL ACTUAL EXPENDITURES & OTHER FINANCING USES	\$81,337.00	\$54,224.00

LEA : 129546103 Pottsville Area SD

Printed 11/8/2024 3:15:13 PM

1000 Instruction

100 Personnel Services - Salaries

100 Personnel Services - Salaries	45,963.00	30,642.00
-----------------------------------	-----------	-----------

Total Personnel Services - Salaries	\$45,963.00	\$30,642.00
--	--------------------	--------------------

200 Personnel Services - Employee Benefits

210 Group Insurance - Contracted Provider	22.00	14.00
---	-------	-------

220 Social Security Contributions	3,437.00	2,291.00
-----------------------------------	----------	----------

230 PSERS Retirement Contributions	15,627.00	10,418.00
------------------------------------	-----------	-----------

270 Group Insurance - Self-Insurance	15,103.00	10,069.00
--------------------------------------	-----------	-----------

292 Health Savings Accounts	1,185.00	790.00
-----------------------------	----------	--------

Total Personnel Services - Employee Benefits	\$35,374.00	\$23,582.00
---	--------------------	--------------------

Total 1000 Instruction	\$81,337.00	\$54,224.00
-------------------------------	--------------------	--------------------

LEA : 129546103 Pottsville Area SD

Printed 11/8/2024 3:15:13 PM

1400 Other Instructional Programs - Elementary / Secondary	<u>Nonspecial Education</u>	<u>Special Education</u>
100 Personnel Services - Salaries		
100 Personnel Services - Salaries	45,963.00	30,642.00
Total Personnel Services - Salaries	\$45,963.00	\$30,642.00
200 Personnel Services - Employee Benefits		
210 Group Insurance - Contracted Provider	22.00	14.00
220 Social Security Contributions	3,437.00	2,291.00
230 PSERS Retirement Contributions	15,627.00	10,418.00
270 Group Insurance - Self-Insurance	15,103.00	10,069.00
292 Health Savings Accounts	1,185.00	790.00
Total Personnel Services - Employee Benefits	\$35,374.00	\$23,582.00
Total 1400 Other Instructional Programs - Elementary / Secondary	\$81,337.00	\$54,224.00

LEA : 129546103 Pottsville Area SD

Printed 11/8/2024 3:15:13 PM

1440 Alternative Regular Education Programs	<u>Nonspecial Education</u>	<u>Special Education</u>
100 Personnel Services - Salaries		
100 Personnel Services - Salaries	45,963.00	30,642.00
Total Personnel Services - Salaries	\$45,963.00	\$30,642.00
200 Personnel Services - Employee Benefits		
210 Group Insurance - Contracted Provider	22.00	14.00
220 Social Security Contributions	3,437.00	2,291.00
230 PSERS Retirement Contributions	15,627.00	10,418.00
270 Group Insurance - Self-Insurance	15,103.00	10,069.00
292 Health Savings Accounts	1,185.00	790.00
Total Personnel Services - Employee Benefits	\$35,374.00	\$23,582.00
Total 1440 Alternative Regular Education Programs	\$81,337.00	\$54,224.00

LEA : 129546103 Pottsville Area SD

Printed 11/8/2024 3:15:13 PM

1441 Adjudicated / Court-Placed Programs	<u>Nonspecial Education</u>	<u>Special Education</u>
100 <u>Personnel Services - Salaries</u>		
100 Personnel Services - Salaries	45,963.00	30,642.00
Total Personnel Services - Salaries	\$45,963.00	\$30,642.00
200 <u>Personnel Services - Employee Benefits</u>		
210 Group Insurance - Contracted Provider	22.00	14.00
220 Social Security Contributions	3,437.00	2,291.00
230 PSERS Retirement Contributions	15,627.00	10,418.00
270 Group Insurance - Self-Insurance	15,103.00	10,069.00
292 Health Savings Accounts	1,185.00	790.00
Total Personnel Services - Employee Benefits	\$35,374.00	\$23,582.00
Total 1441 Adjudicated / Court-Placed Programs	\$81,337.00	\$54,224.00

	<u>Nonspecial Education</u>	<u>Special Education</u>
6000 Revenue from Local Sources		
Total Revenue from Local Sources	\$133,494	\$88,996
Total	\$133,494	\$88,996
TOTAL REVENUES	\$133,494	\$88,996

	<u>Nonspecial Education</u>	<u>Special Education</u>
6000 Revenue from Local Sources		
6944 Receipts from Other LEAs in Pennsylvania - Education	133,494	88,996
Total Revenue from Local Sources	\$133,494	\$88,996
TOTAL	\$133,494	\$88,996
TOTAL REVENUES	\$133,494	\$88,996

