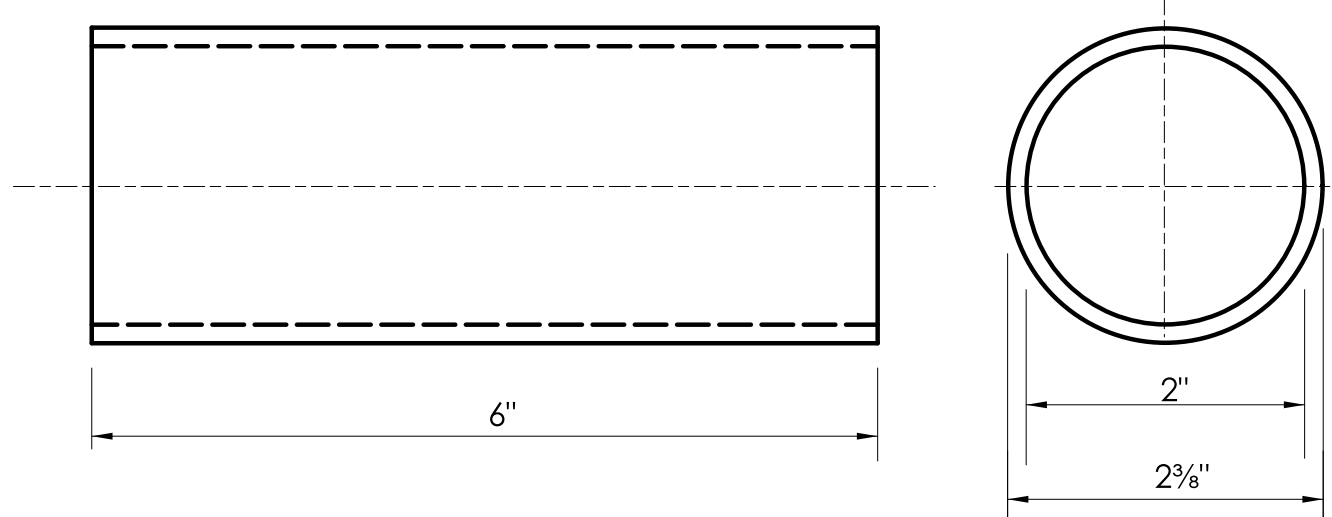
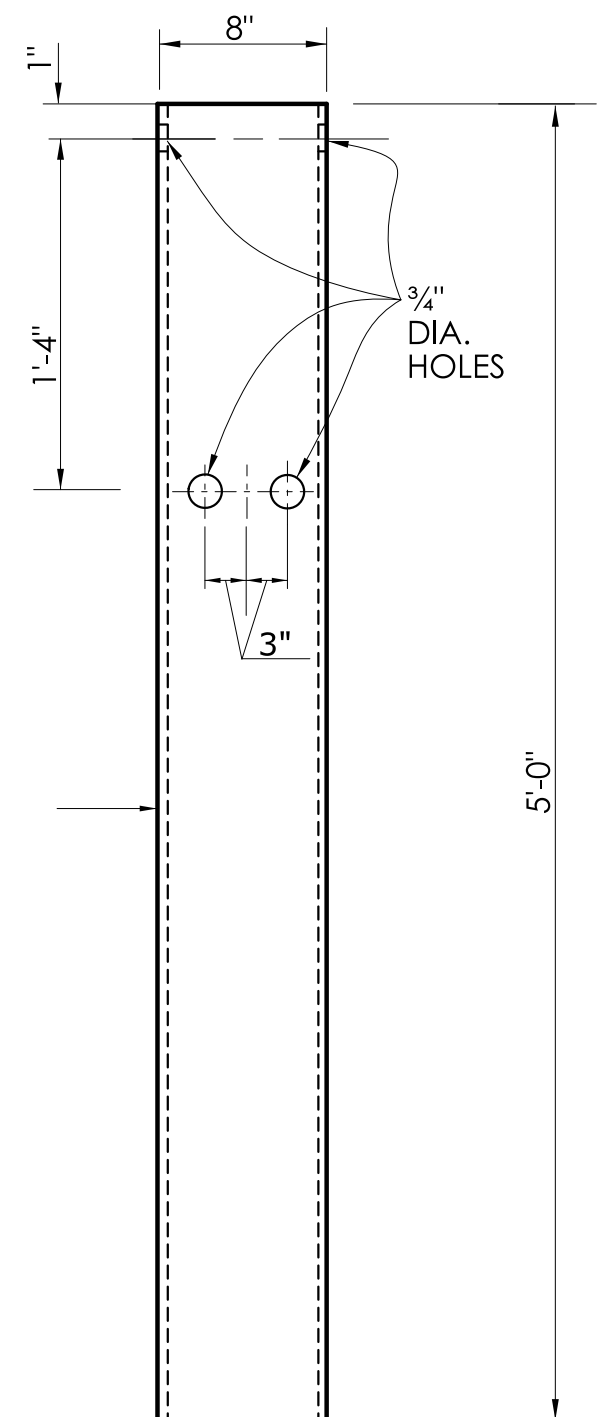


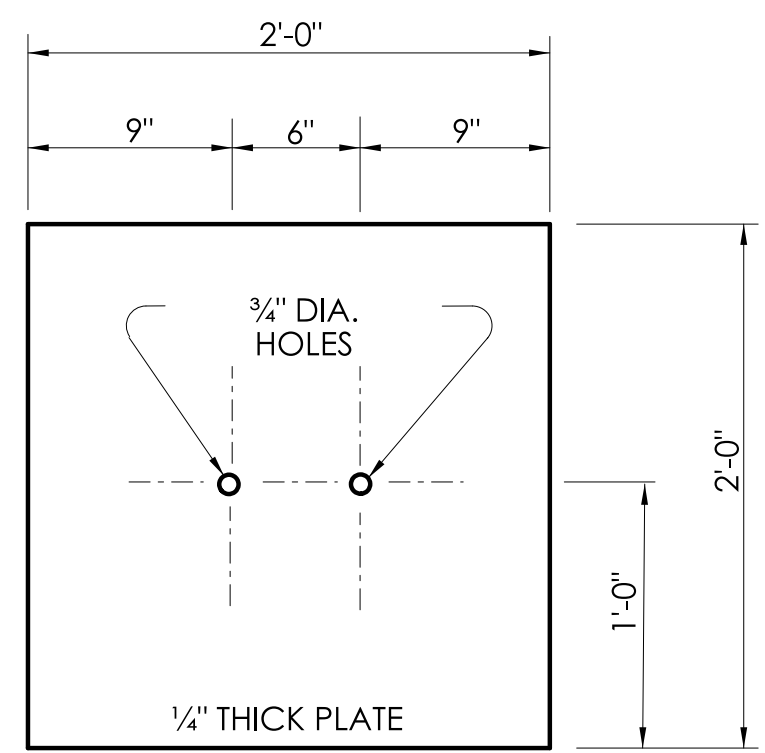
**DETAIL A
CABLE ANCHORAGE ASSEMBLY**



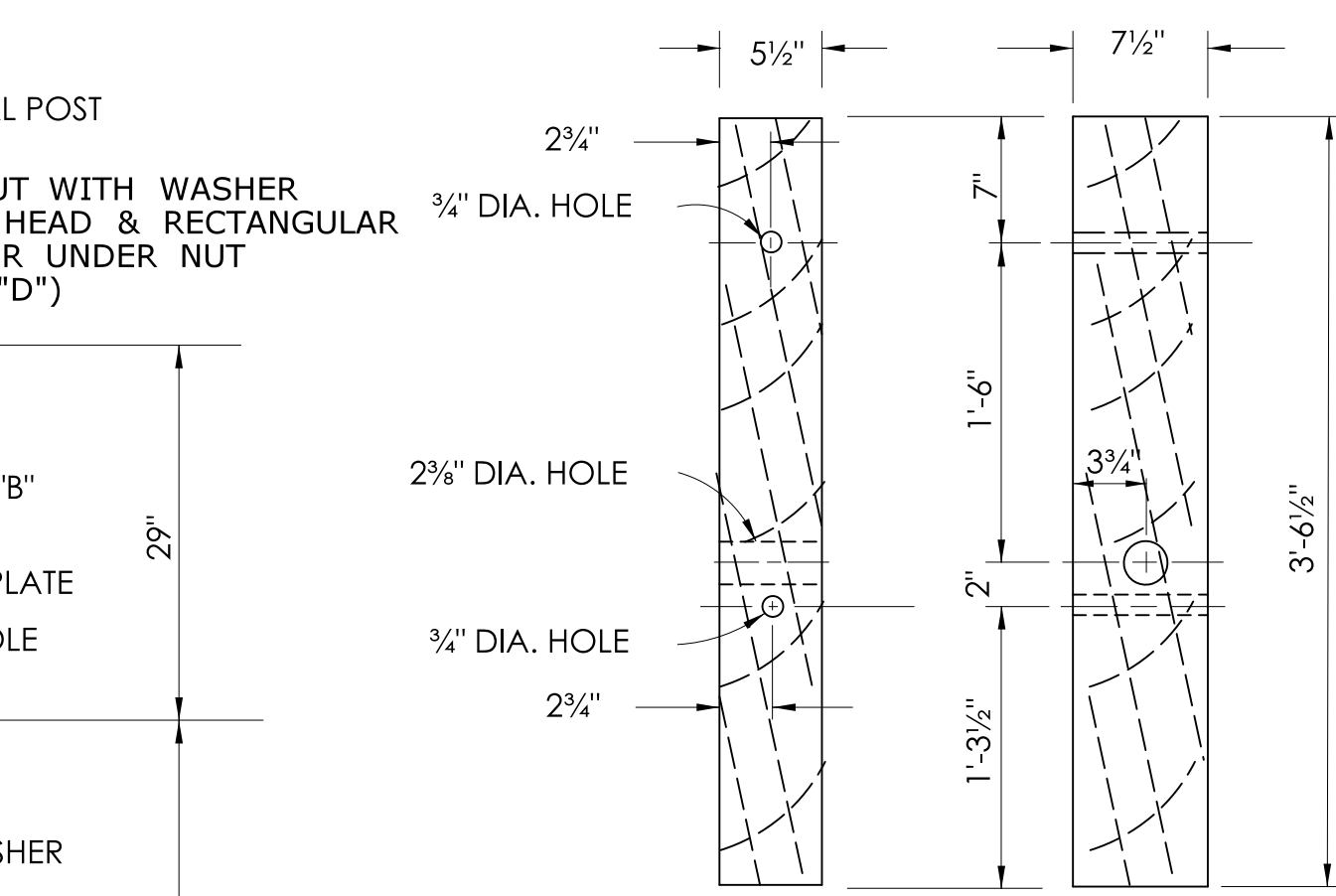
**BREAKAWAY TERMINAL POST SLEEVE
(ARTBA-FMMO2)**



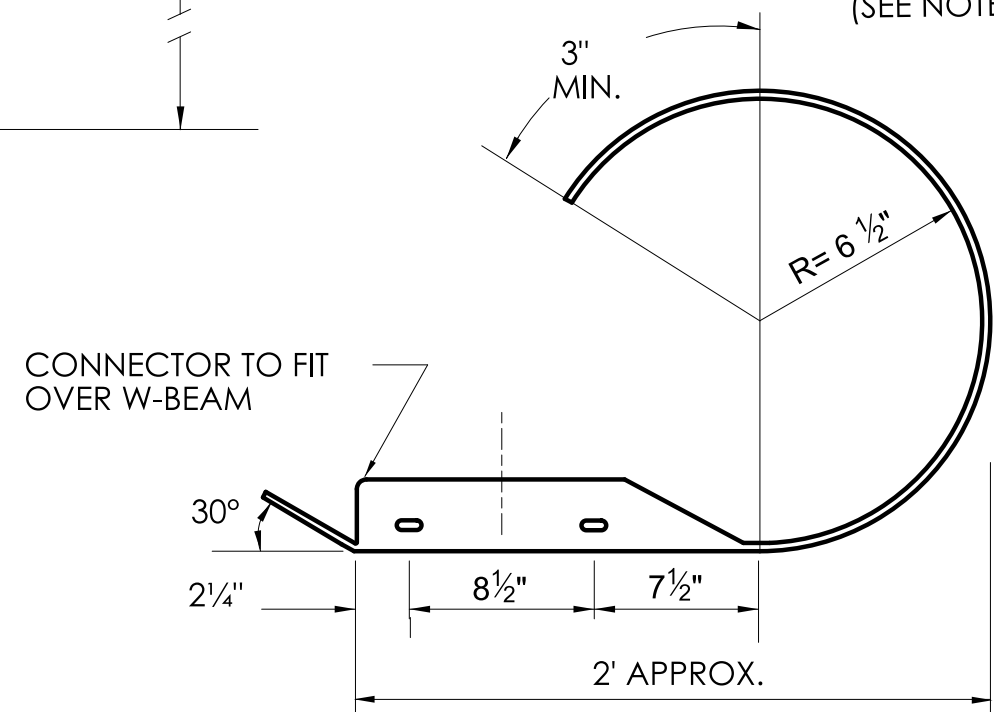
STEEL TUBE



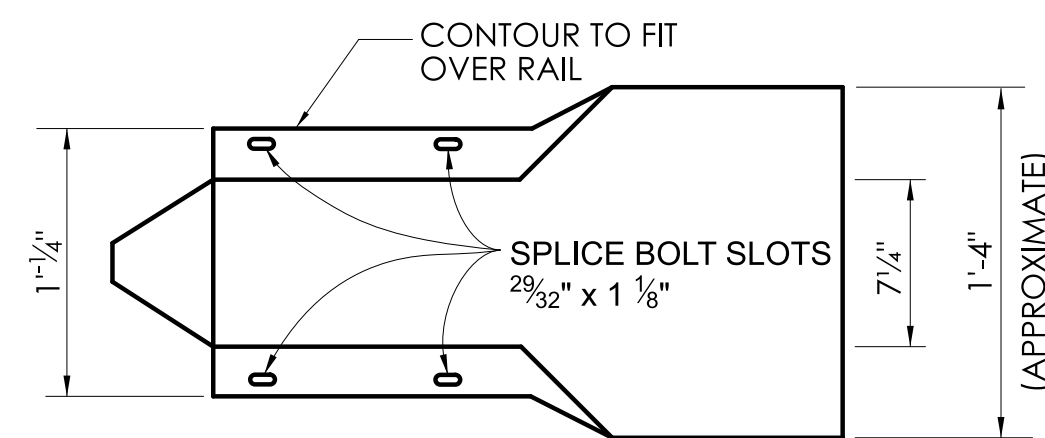
SOIL PLATE



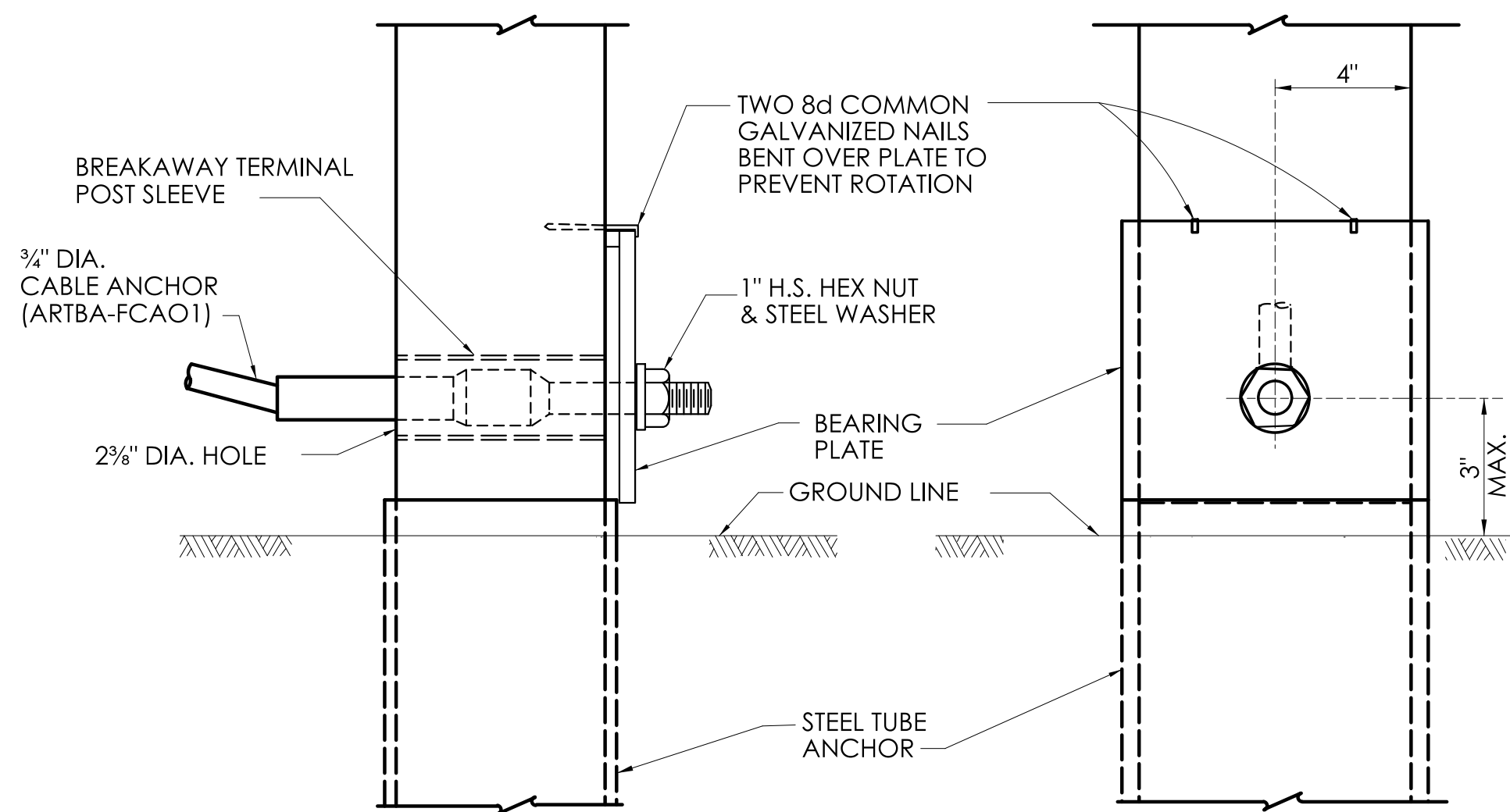
**DETAIL C
TIMBER TERMINAL POST
(ARTBA-PDFO1)
(SEE NOTE 2)**



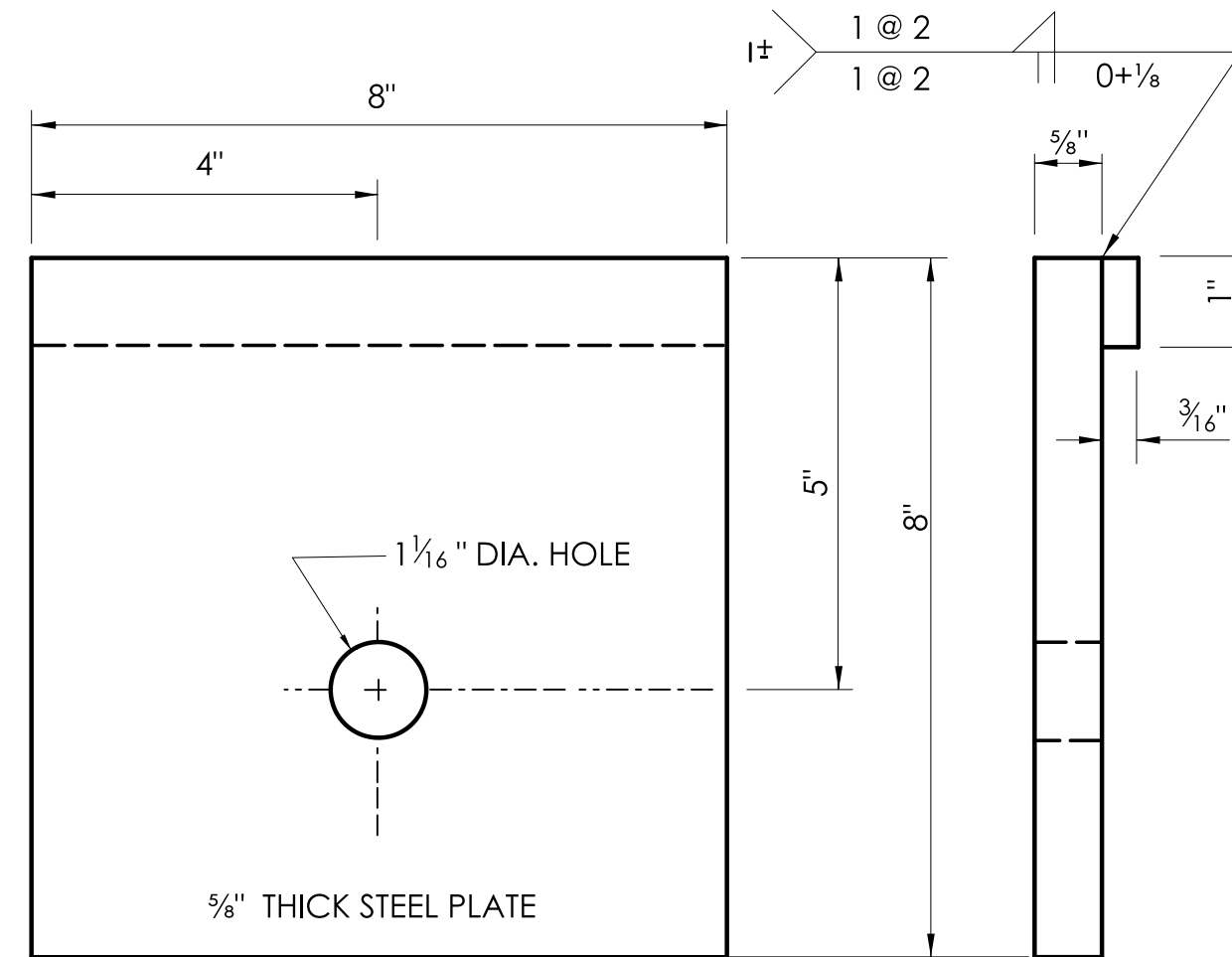
PLAN



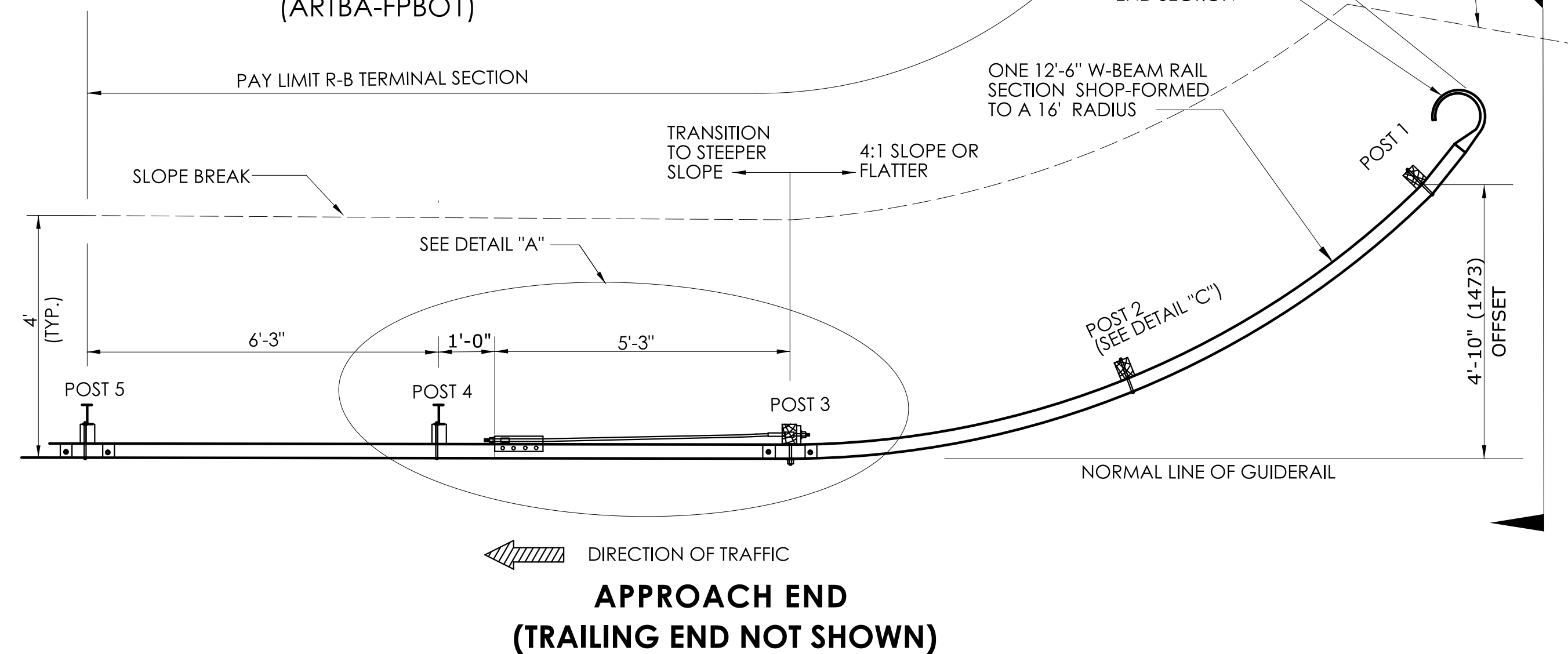
ROUNDED W-BEAM END SECTION



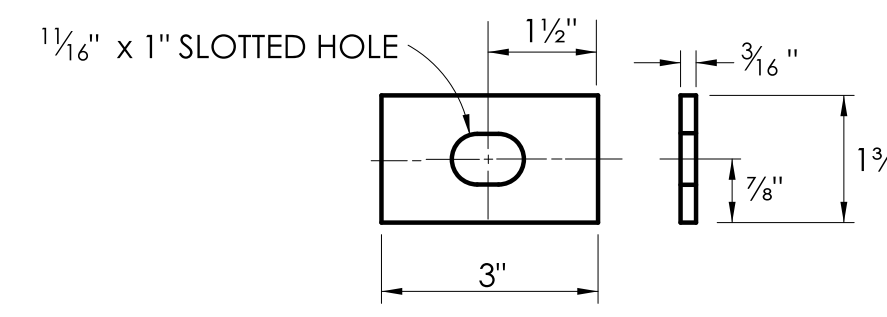
DETAIL B



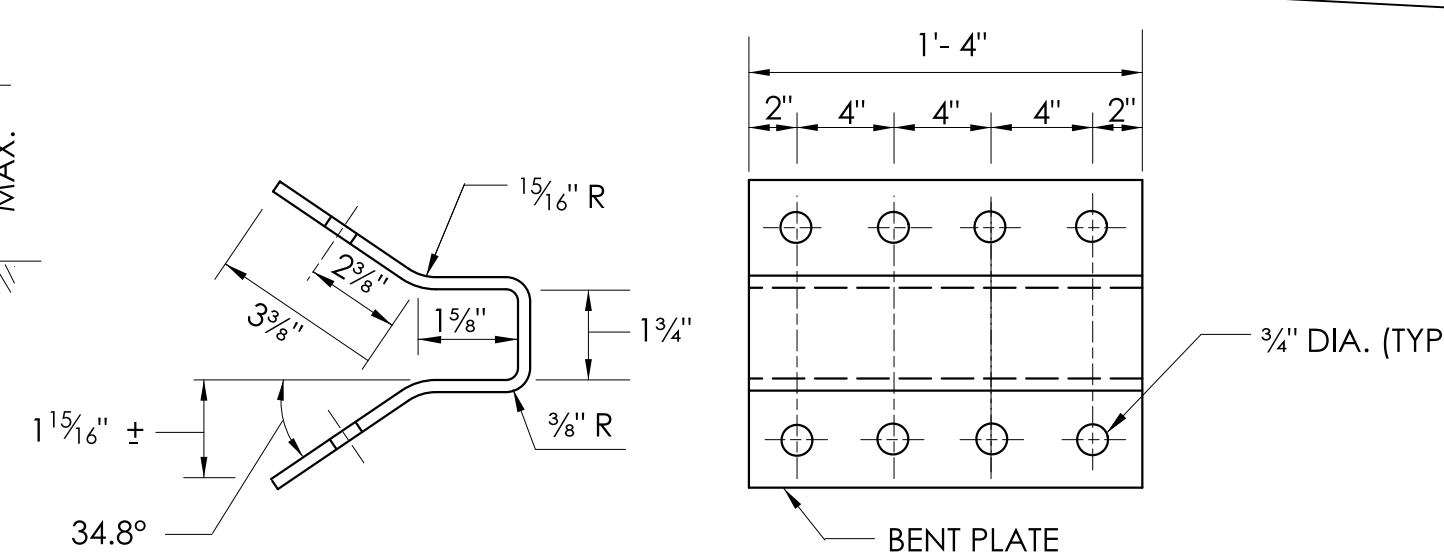
**BEARING PLATE
(ARTBA-FPB01)**



**APPROACH END
(TRAILING END NOT SHOWN)**



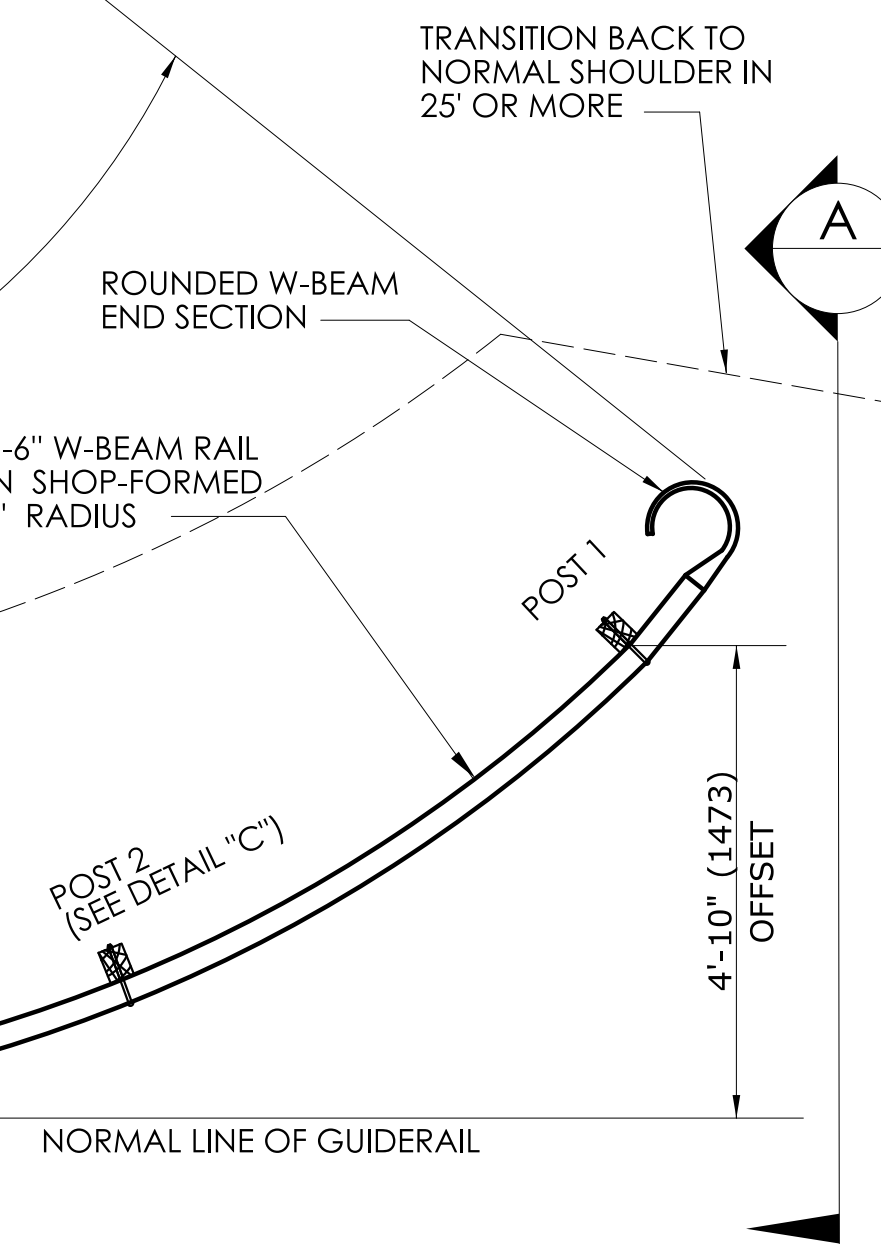
**DETAIL D
RECTANGULAR PLATE WASHER**



**ANCHOR PLATE
(ARTBA-FPA01)**

GENERAL NOTES:

1. APPROACH END R-B TERMINAL SECTION SHALL ONLY BE USED ON LOW SPEED (<45 MPH) ROADWAYS.
2. POSTS 1, 2 AND 3 ARE TIMBER TERMINAL POSTS (DETAIL "C") WITH STEEL TUBES. POSTS 4 AND 5 ARE STANDARD R-B 350 STEEL POSTS WITH BLOCKOUTS.
3. REFER TO CTDOT STANDARD SPECIFICATIONS FOR MATERIAL AND GENERAL CONSTRUCTION METHODS.
4. MINIMUM RAIL HEIGHT FOR NEW CONSTRUCTION SHALL BE 29" +/- 1".



**SECTION
A**

NOT TO SCALE

SIGNATURE BLOCK:
OFFICE OF ENGINEERING
2800 BERLIN TURNPIKE
NEWINGTON, CT 06111

SUBMITTED BY:

APPROVED BY:



**CTDOT
STANDARD SHEET**

STANDARD SHEET TITLE:
R-B TERMINAL SECTION

STANDARD SHEET NO.:
HW-910_17