

LEA Name : Lower Merion SD
Address : 301 E Montgomery Ave
Ardmore , PA 19003

County : Montgomery
AUN Number : 123464502
LEA Type : SD

Annual Financial Report
Accuracy Certification Statement

For Fiscal Year Ending
6/30/2024

Pennsylvania Department of Education
&
Office of Comptroller Operations

PDE-2056: Intermediate Unit
PDE-2057: School District, AVTS/CTC, Charter School,
and Special Program Jointure

CERTIFICATION: By signing this page I agree that the electronic data submitted is a complete and accurate statement of the financial operations and status of the local education agency for the fiscal year. It has been prepared in accordance with generally accepted accounting principles and established Commonwealth of PA reporting guidelines.

Chief School Administrator Signature

Date

Board Secretary Signature

Date

Victor Orlando

Contact Person

orlandv@lmsd.org

Contact Person E-mail Address

(610)645-1970

Ext :

Contact Person Telephone Number

(610)645-9772

Contact Person Fax Number

Audit Certification
Annual Financial Report:
For Fiscal Year Ending **6/30/2024**
(Pursuant to PA School Code Section 218(b))

LEA Name : Lower Merion SD
AUN Number : 123464502
County : Montgomery

Audit Certification Due: 12/31/2024

This certification is applicable to the Annual Financial Report data submitted through the Consolidated Financial Reporting System (CFRS).

CERTIFICATION: By signing this page I agree that the financial statements of the school have been properly audited as noted above pursuant to Article XXIV, and in the auditor's professional opinion, the Annual Financial Report (PDE-2057) submitted through CFRS is materially consistent with the audited financial statements.

Chief School Administrator

Board Secretary

Signature

Date

Signature

Date

Victor Orlando

Contact Person

orlandv@lmsd.org

Contact Person E-mail Address

(610)645-1970

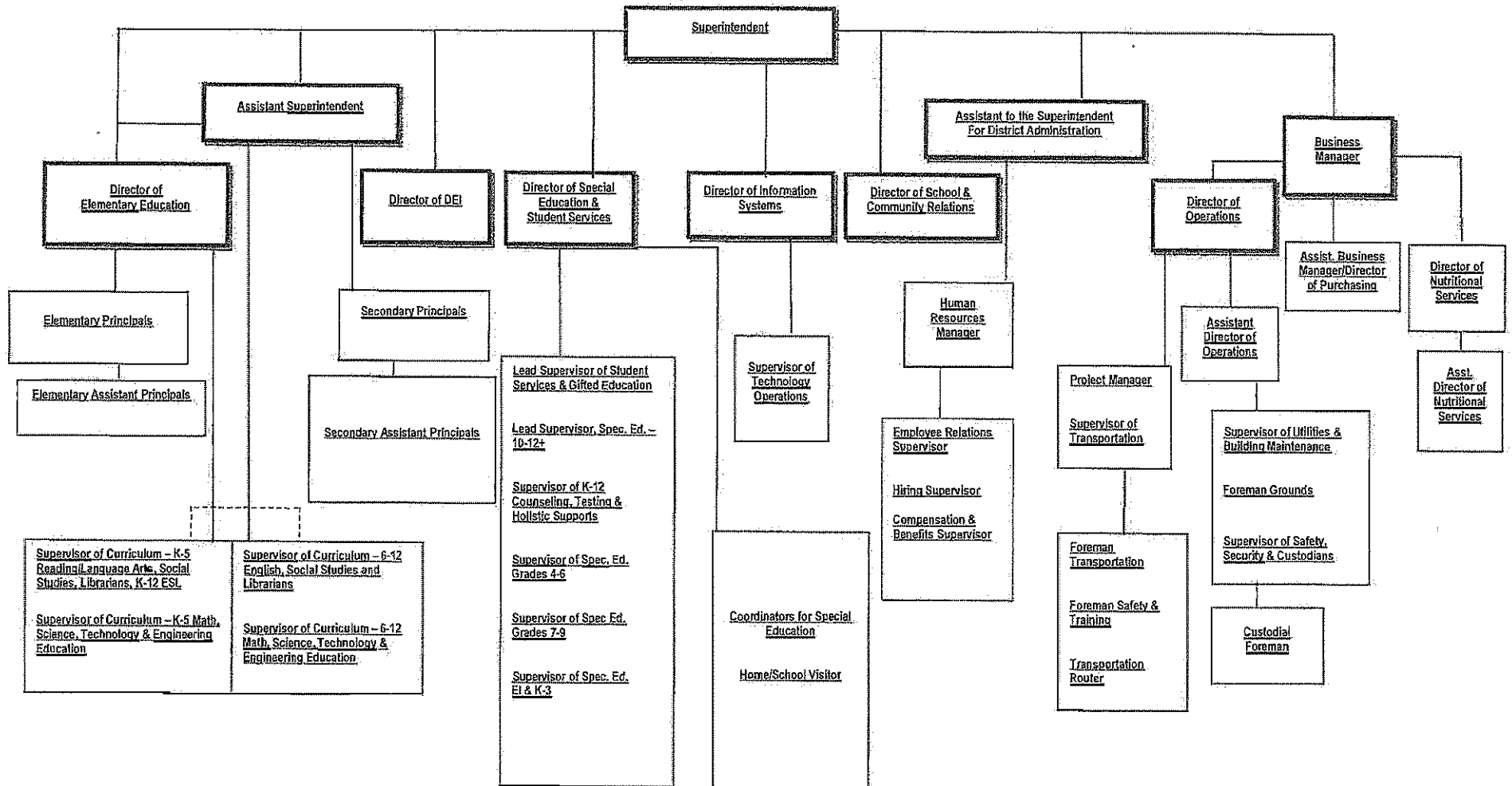
Ext :

Contact Person Telephone Number

(610)645-9772

Contact Person Fax Number

Lower Merion School District
Organizational Chart



Capitalization

Definition

Capital assets shall include but limited to land, improvements to land, easements, buildings, building improvements, vehicles, machinery, equipment, works of art and historical treasures and infrastructure. Capital assets are both tangible and intangible assets used in operations and have initial useful lives extending beyond a single reporting period. Equipment will not change its original shape, appearance or character with use and it can be expected to last more than one (1) year with reasonable care and maintenance.

Guidelines

Purchased Capital Assets

Purchased capital assets of \$5,000 or greater should be recorded at their historical/original cost. The cost of capital assets should include capitalized interest and ancillary charges necessary to place the asset into service. Ancillary charges include freight, site preparation and professional fees.

Capital assets should be depreciated over their useful lives as determined for each asset class. Inexhaustible capital assets such as land and land improvements should not be depreciated.

If determining historical costs is not practical due to inadequate records, reporting should be based on estimates of original cost at the date of construction or purchase.

Fixed asset records must include the acquisition date, cost, useful life, depreciation method and salvage value for capital asset classifications and groups.

Infrastructure

Infrastructure assets are long-lived capital assets that normally are stationary in nature and can normally be preserved for a significantly greater number of years than most capital assets. Infrastructure includes parking lots and sidewalks.

Infrastructure assets should be depreciated over the useful lives.

Routine repairs and maintenance costs are charges to operations as incurred. Expenditures that extend the useful life of the infrastructure are capitalized as part of the asset and depreciated over the newly established useful life.

Useful Lives

Fixed assets are to be depreciated over the following useful lives:

<u>Asset Class</u>	<u>Years</u>
School buildings	40-50
HVAC systems	20-25
Interior/Exterior construction	20-30
Sprinkler/Fire system	20-25
Outdoor equipment	15-20
Machinery and tools	10-15
Kitchen equipment	10-15
Custodial equipment	05-07
Furniture and accessories	15-20
Business machines	05-10
Vehicles	05-15
Audiovisual/Communication equipment	05-10

Depreciation Expense

Depreciation is allocated to expense in a systematic and rational manner. The straight-line method of depreciation is to be used.

Depreciation may be calculated for a class of assets, a network of assets or individual assets.

Disposals

Sale of Fixed Assets: When fixed assets are sold, a calculation of gain or loss on disposal is required. The calculation is based upon the amount of proceeds received less the net book value (cost less accumulated depreciation taken on the asset).

Trade-ins: The value given for a trade is part of the cost of the newly acquired asset. The costs and accumulated depreciation of the traded-in asset must be removed from the books. Any gain or loss resulting from the disposition of the asset will be recognized as a gain or loss on disposal.

LEA : 123464502 Lower Merion SD

Printed 11/19/2024 9:39:08 AM

<u>Val Number</u>	<u>Description</u>	<u>Justification</u>
30148	Revenue Detail: An amount has been reported in revenue code 6837. Any portion of this revenue which was received as pass through from another PA LEA (Intermediate Units, School Districts, Charter Schools, and Career Technology Centers) must be reported in revenue code 6838. Please confirm within the justification that no pass through funds from other LEAs are included in 6837.	The amount reported in function 6837 was revenue received from the County of Montgomery titled the School-Based Behavioral American Recovery Plan Act Grant. These federal funds were passed through our local County and therefore is coded correctly.
42420	Expenditure Detail: Total current year 2700-513 expenditure varies from prior year by 10%. Correct the data or enter a justification. 2700-513, AFR Exp Detail: \$4,181,734.44 2700-513, PY AFR Amount: \$2,882,005.38	More contracted services were required in 23/24 due to increase demand for special education transportation services and an increase in the number of McKinney-Vento students. Also, contracted rates have increased from the prior year.

LEA : 123464502 Lower Merion SD

Printed 11/19/2024 9:36:37 AM

Amounts Expressed in Whole Dollars	<u>General Fund</u> (10)	<u>Student Sponsored</u> <u>Activity Fund</u> (21)	<u>Public Purpose Trust</u> (27)	<u>Other Compt Approved</u> (28)	<u>Athletic / Activity</u> (29)
Assets And Deferred Outflows Of Resources					
Assets					
0100 Cash and Cash Equivalents	46,088,813				
0110 Investments	7,000,000				
0120 Taxes Receivable	2,977,153				
0130 Due From Other Funds	722,883				
0141 Due From Other Governments	13,635,584				
0142 State Revenue Receivable					
0143 Federal Revenue Receivable					
0145 Other Intergovernmental Revenue Receivable					
0146 Due from Primary Government					
0147 Due from Component Unit					
0150 Other Receivables	502,765				
0170 Inventories					
0180 Prepaid Expenses (Expenditures)	893,127				
0190 Other Current Assets					
Total Assets	\$71,820,325				
0910 Deferred Outflows of Resources					
Total Assets And Deferred Outflows Of Resources	\$71,820,325				

LEA : 123464502 Lower Merion SD

Printed 11/19/2024 9:36:37 AM

Amounts Expressed in Whole Dollars		<u>Capital Reserve (690,</u> <u>1850)</u> <u>(31)</u>	<u>Capital Reserve (1431)</u> <u>(32)</u>	<u>Other Capital Projects</u> <u>Fund</u> <u>(39)</u>	<u>Debt Service</u> <u>(40)</u>	<u>Permanent</u> <u>(90)</u>
Assets And Deferred Outflows Of Resources						
Assets						
0100	Cash and Cash Equivalents		7,715,197	5,132,625	4,770,973	
0110	Investments					
0120	Taxes Receivable					
0130	Due From Other Funds					
0141	Due From Other Governments					
0142	State Revenue Receivable					
0143	Federal Revenue Receivable					
0145	Other Intergovernmental Revenue Receivable					
0146	Due from Primary Government					
0147	Due from Component Unit					
0150	Other Receivables					
0170	Inventories					
0180	Prepaid Expenses (Expenditures)					
0190	Other Current Assets					
Total Assets			\$7,715,197	\$5,132,625	\$4,770,973	
0910	Deferred Outflows of Resources					
Total Assets And Deferred Outflows Of Resources			\$7,715,197	\$5,132,625	\$4,770,973	

LEA : 123464502 Lower Merion SD

Printed 11/19/2024 9:36:37 AM

Amounts Expressed in Whole Dollars		<u>Total Governmental</u>
		<u>Funds</u>
Assets And Deferred Outflows Of Resources		
Assets		
0100 Cash and Cash Equivalents	63,707,608	
0110 Investments	7,000,000	
0120 Taxes Receivable	2,977,153	
0130 Due From Other Funds	722,883	
0141 Due From Other Governments	13,635,584	
0142 State Revenue Receivable		
0143 Federal Revenue Receivable		
0145 Other Intergovernmental Revenue Receivable		
0146 Due from Primary Government		
0147 Due from Component Unit		
0150 Other Receivables	502,765	
0170 Inventories		
0180 Prepaid Expenses (Expenditures)	893,127	
0190 Other Current Assets		
Total Assets	\$89,439,120	
0910 Deferred Outflows of Resources		
Total Assets And Deferred Outflows Of Resources	\$89,439,120	

LEA : 123464502 Lower Merion SD

Printed 11/19/2024 9:36:37 AM

Amounts Expressed in Whole Dollars	<u>General Fund</u> <u>(10)</u>	<u>Student Sponsored</u> <u>Activity Fund</u> <u>(21)</u>	<u>Public Purpose Trust</u> <u>(27)</u>	<u>Other Compt Approved</u> <u>(28)</u>	<u>Athletic / Activity</u> <u>(29)</u>
Liabilities And Deferred Inflows Of Resources And Fund Balances					
Liabilities					
0400 Due to Other Funds	332,776				
0411 Due to Other Governments					
0412 Due to Primary Government					
0413 Due to Component Unit					
0420 Accounts Payable	5,459,751				
0430 Contracts Payable					
0440 Current Portion of Long-Term Debt					
0450 Short-Term Payables					
0461 Accrued Salaries and Benefits	36,406,448				
0462 Payroll Deductions and Withholding					
0480 Unearned Revenues	379,908				
0490 Other Current Liabilities					
Total Liabilities	\$42,578,883				
0950 Deferred Inflows of Resources	2,211,556				
Fund Balances					
0810 Nonspendable Fund Balance	893,127				
0820 Restricted Fund Balance	8,000,000				
0830 Committed Fund Balance	13,300,000				
0840 Assigned Fund Balance					
0850 Unassigned Fund Balance	4,836,759				
Total Fund Balances	\$27,029,886				
Total Liabilities, Deferred Inflows Of Resources And Fund Balances	\$71,820,325				

Amounts Expressed in Whole Dollars	<u>Capital Reserve (690.</u> <u>1850)</u> <u>(31)</u>	<u>Capital Reserve (1431)</u> <u>(32)</u>	<u>Other Capital Projects</u> <u>Fund</u> <u>(39)</u>	<u>Debt Service</u> <u>(40)</u>	<u>Permanent</u> <u>(90)</u>
Liabilities And Deferred Inflows Of Resources And Fund Balances					
Liabilities					
0400 Due to Other Funds					
0411 Due to Other Governments					
0412 Due to Primary Government					
0413 Due to Component Unit					
0420 Accounts Payable		3,700	610,752		
0430 Contracts Payable					
0440 Current Portion of Long-Term Debt					
0450 Short-Term Payables					
0461 Accrued Salaries and Benefits					
0462 Payroll Deductions and Withholding					
0480 Unearned Revenues					
0490 Other Current Liabilities					
Total Liabilities		\$3,700	\$610,752		
0950 Deferred Inflows of Resources					
Fund Balances					
0810 Nonspendable Fund Balance					
0820 Restricted Fund Balance		7,711,497	4,521,873	4,770,973	
0830 Committed Fund Balance					
0840 Assigned Fund Balance					
0850 Unassigned Fund Balance					
Total Fund Balances		\$7,711,497	\$4,521,873	\$4,770,973	
Total Liabilities, Deferred Inflows Of Resources And Fund Balances		\$7,715,197	\$5,132,625	\$4,770,973	

LEA : 123464502 Lower Merion SD

Printed 11/19/2024 9:36:37 AM

Amounts Expressed in Whole Dollars	Total Governmental Funds
Liabilities And Deferred Inflows Of Resources And Fund Balances	
Liabilities	
0400 Due to Other Funds	332,776
0411 Due to Other Governments	
0412 Due to Primary Government	
0413 Due to Component Unit	
0420 Accounts Payable	6,074,203
0430 Contracts Payable	
0440 Current Portion of Long-Term Debt	
0450 Short-Term Payables	
0461 Accrued Salaries and Benefits	36,406,448
0462 Payroll Deductions and Withholding	
0480 Unearned Revenues	379,908
0490 Other Current Liabilities	
Total Liabilities	\$43,193,335
0950 Deferred Inflows of Resources	2,211,556
Fund Balances	
0810 Nonspendable Fund Balance	893,127
0820 Restricted Fund Balance	25,004,343
0830 Committed Fund Balance	13,300,000
0840 Assigned Fund Balance	
0850 Unassigned Fund Balance	4,836,759
Total Fund Balances	\$44,034,229
Total Liabilities, Deferred Inflows Of Resources And Fund Balances	\$89,439,120

Amounts Expressed in Whole Dollars	<u>General Fund</u> (10)	<u>Student Sponsored</u> <u>Activity Fund</u> (21)	<u>Public Purpose Trust</u> (27)	<u>Other Compt Approved</u> (28)	<u>Athletic / Activity</u> (29)
Revenues					
6000 Revenue from Local Sources	267,483,431				
7000 Revenue from State Sources	47,688,936				
8000 Revenue from Federal Sources	2,111,343				
Total Revenues	\$317,283,710				
Expenditures					
1000 Instruction	180,911,696				
2000 Support Services	95,105,194				
3000 Operation of Non-Instructional Services	7,146,488				
4000 Facilities Acquisition, Construction and Improvement Services					
5110 Debt Service	31,738,529				
5130 Refund of Prior Year Revenues / Receipts	97,050				
5140 Leases and Other Right-to-Use Arrangements	412,055				
Total Expenditures	\$315,411,012				
Excess (Deficiency) Of Revenues Over Expenditures	\$1,872,698				
Other Financing Sources (Uses)					
9110 Face Value of Bonds Issued					
9120 Proceeds from Refunding of Bonds					
9130 Bond Premiums					
9200 Proceeds from Extended Term Financing, Leases, and Other Right-to-Use Arrangements					
9300 Interfund Transfers - IN					
9400 Sale of or Compensation for Loss of Fixed Assets					
9710 Transfers from Component Units					
9720 Transfers from Primary Governments					
9910 Other Financing Sources Not Listed in the 9000 Series					
9990 Insurance Recoveries					
5120 Debt Service – Refunded Bonds					
5150 Bond Discounts					
5200 Interfund Transfers – Out	2,900,000				
5300 Transfers Out to Component Units/Primary Governments					
Total Other Financing Sources (Uses)	(\$2,900,000)				

Amounts Expressed in Whole Dollars	<u>Capital Reserve (690-1850)</u> (31)	<u>Capital Reserve (1431)</u> (32)	<u>Other Capital Projects</u> <u>Fund</u> (39)	<u>Debt Service</u> (40)	<u>Permanent</u> (90)
Revenues					
6000 Revenue from Local Sources		321,396	349,208	242,433	
7000 Revenue from State Sources					
8000 Revenue from Federal Sources					
Total Revenues		\$321,396	\$349,208	\$242,433	
Expenditures					
1000 Instruction					
2000 Support Services		6,822,354	491,041		
3000 Operation of Non-Instructional Services					
4000 Facilities Acquisition, Construction and Improvement Services			5,436,233		
5110 Debt Service					
5130 Refund of Prior Year Revenues / Receipts					
5140 Leases and Other Right-to-Use Arrangements					
Total Expenditures		\$6,822,354	\$5,927,274		
Excess (Deficiency) Of Revenues Over Expenditures		(\$6,500,958)	(\$5,578,066)	\$242,433	
Other Financing Sources (Uses)					
9110 Face Value of Bonds Issued					
9120 Proceeds from Refunding of Bonds					
9130 Bond Premiums					
9200 Proceeds from Extended Term Financing, Leases, and Other Right-to-Use Arrangements					
9300 Interfund Transfers - IN		2,900,000			
9400 Sale of or Compensation for Loss of Fixed Assets					
9710 Transfers from Component Units					
9720 Transfers from Primary Governments					
9910 Other Financing Sources Not Listed in the 9000 Series					
9990 Insurance Recoveries				314,068	
5120 Debt Service – Refunded Bonds					
5150 Bond Discounts					
5200 Interfund Transfers – Out					
5300 Transfers Out to Component Units/Primary Governments					
Total Other Financing Sources (Uses)		\$2,900,000	\$314,068		

Amounts Expressed in Whole Dollars		<u>Total Governmental Funds</u>
Revenues		
6000 Revenue from Local Sources		268,396,468
7000 Revenue from State Sources		47,688,936
8000 Revenue from Federal Sources		2,111,343
Total Revenues		\$318,196,747
Expenditures		
1000 Instruction		180,911,696
2000 Support Services		102,418,589
3000 Operation of Non-Instructional Services		7,146,488
4000 Facilities Acquisition, Construction and Improvement Services		5,436,233
5110 Debt Service		31,738,529
5130 Refund of Prior Year Revenues / Receipts		97,050
5140 Leases and Other Right-to-Use Arrangements		412,055
Total Expenditures		\$328,160,640
Excess (Deficiency) Of Revenues Over Expenditures		(\$9,963,893)
Other Financing Sources (Uses)		
9110 Face Value of Bonds Issued		
9120 Proceeds from Refunding of Bonds		
9130 Bond Premiums		
9200 Proceeds from Extended Term Financing, Leases, and Other Right-to-Use Arrangements		
9300 Interfund Transfers - IN		2,900,000
9400 Sale of or Compensation for Loss of Fixed Assets		
9710 Transfers from Component Units		
9720 Transfers from Primary Governments		
9910 Other Financing Sources Not Listed in the 9000 Series		
9990 Insurance Recoveries		314,068
5120 Debt Service – Refunded Bonds		
5150 Bond Discounts		
5200 Interfund Transfers – Out		2,900,000
5300 Transfers Out to Component Units/Primary Governments		
Total Other Financing Sources (Uses)		\$314,068

Amounts Expressed in Whole Dollars	<u>General Fund</u> <u>(10)</u>	<u>Student Sponsored</u> <u>Activity Fund</u> <u>(21)</u>	<u>Public Purpose Trust</u> <u>(27)</u>	<u>Other Compt Approved</u> <u>(28)</u>	<u>Athletic / Activity</u> <u>(29)</u>
Special And Extraordinary Items					
9920 Special Items – Gains					
9930 Extraordinary Items – Gains					
5520 Special Items – Losses					
5530 Extraordinary Items – Losses					
Net Change In Fund Balances	(\$1,027,302)				
Fund Balance					
0001 Fund Balance - Beginning of Fiscal Year	28,057,188				
Fund Balance - End Of Year	\$27,029,886				

Amounts Expressed in Whole Dollars	<u>Capital Reserve (690.</u> <u>1850)</u> <u>(31)</u>	<u>Capital Reserve (1431)</u> <u>(32)</u>	<u>Other Capital Projects</u> <u>Fund</u> <u>(39)</u>	<u>Debt Service</u> <u>(40)</u>	<u>Permanent</u> <u>(90)</u>
Special And Extraordinary Items					
9920 Special Items – Gains					
9930 Extraordinary Items – Gains					
5520 Special Items – Losses					
5530 Extraordinary Items – Losses					
Net Change In Fund Balances		(\$3,600,958)	(\$5,263,998)	\$242,433	
Fund Balance					
0001 Fund Balance - Beginning of Fiscal Year		11,312,455	9,785,871	4,528,540	
Fund Balance - End Of Year		\$7,711,497	\$4,521,873	\$4,770,973	

Amounts Expressed in Whole Dollars	<u>Total Governmental</u> <u>Funds</u>
Special And Extraordinary Items	
9920 Special Items – Gains	
9930 Extraordinary Items – Gains	
5520 Special Items – Losses	
5530 Extraordinary Items – Losses	
Net Change in Fund Balances	(\$9,649,825)
Fund Balance	
0001 Fund Balance - Beginning of Fiscal Year	53,684,054
Fund Balance - End Of Year	\$44,034,229

LEA : 123464502 Lower Merion SD

Printed 11/19/2024 9:37:01 AM

Page - 1 of 2

Amounts Expressed in Whole Dollars	<u>Food Service</u> <u>(51)</u>	<u>Child Care</u> <u>Operations</u> <u>(52)</u>	<u>Other Enterprise</u> <u>(58)</u>	<u>TOTAL</u>	<u>Internal Service</u> <u>(60)</u>
Assets And Deferred Outflows Of Resources					
Current Assets					
0100 Cash and Cash Equivalents	3,414,576			3,414,576	
0110 Investments					
0130 Due From Other Funds	332,776			332,776	
0141 Due From Other Governments	221,735			221,735	
0142 State Revenue Receivable					
0143 Federal Revenue Receivable					
0146 Due from Primary Government					
0147 Due from Component Unit					
0150 Other Receivables	22,967			22,967	
0170 Inventories	137,629			137,629	
0180 Prepaid Expenses (Expenditures)					
0190 Other Current Assets					
Total Current Assets	\$4,129,683			\$4,129,683	
Noncurrent Assets					
0211 Land					
0212 Site Improvements (Net)					
0220 Buildings and Building Improvements (Net)					
0230 Tangible Property and Intangible Right-To-Use Assets (Net)	67,797			67,797	
0250 Construction in Progress					
0260 Long Term Prepayments					
0290 Other Noncurrent Assets					
Total Noncurrent Assets	\$67,797			\$67,797	
0910 Deferred Outflows of Resources	626,777			626,777	
Total Assets And Deferred Outflows Of Resources	\$4,824,257			\$4,824,257	

Amounts Expressed in Whole Dollars	<u>Food Service</u> (51)	<u>Child Care</u> <u>Operations</u> (52)	<u>Other Enterprise</u> (58)	<u>TOTAL</u>	<u>Internal Service</u> (60)
Liabilities And Deferred Inflows Of Resources And Net Position					
Current Liabilities					
0400 Due to Other Funds	721,758			721,758	
0411 Due to Other Governments					
0413 Due to Component Unit					
0420 Accounts Payable	81,434			81,434	
0430 Contracts Payable					
0440 Current Portion of Long-Term Debt					
0450 Short-Term Payables					
0461 Accrued Salaries and Benefits					
0462 Payroll Deductions and Withholding					
0480 Unearned Revenues	334,063			334,063	
0490 Other Current Liabilities					
Total Current Liabilities	\$1,137,255			\$1,137,255	
Noncurrent Liabilities					
0510 Bonds Payable					
0520 Extended-Term Financing Agreements Payable					
0530 Lease and Other Right-To-Use Obligations					
0540 Accumulated Compensated Absences					
0550 Authority Lease Obligations					
0560 Other Post-Employment Benefits (OPEB)	138,878			138,878	
0570 Net Pension Liability	3,426,881			3,426,881	
0599 Other Noncurrent Liabilities					
Total Noncurrent Liabilities	\$3,565,759			\$3,565,759	
Total Liabilities	\$4,703,014			\$4,703,014	
0950 Deferred Inflows of Resources	85,146			85,146	
Net Position					
0791 Net Investment in Capital Assets	67,797			67,797	
0008 Restricted Net Position (0792 – 0798)					
0799 Unrestricted Net Position	(31,700)			(31,700)	
Total Net Position	\$36,097			\$36,097	
Total Liabilities And Deferred Inflows Of Resources And Net Position	\$4,824,257			\$4,824,257	

Amounts Expressed in Whole Dollars	<u>Food Service</u> (51)	<u>Child Care Operations</u> (52)	<u>Other Enterprise</u> (58)	<u>TOTAL</u>	<u>Internal Service</u> (60)
Operating Revenues					
6600 Food Service Revenue	2,989,564			2,989,564	
0071 Charges for Services					
0072 Other Operating Revenue					
Total Operating Revenues	\$2,989,564			\$2,989,564	
Operating Expenses					
100 Personnel Services – Salaries	1,416,177			1,416,177	
200 Personnel Services – Employee Benefits	915,238			915,238	
300 Purchased Professional and Technical Services	287			287	
400 Purchased Property Services	35,203			35,203	
500 Other Purchased Services	1,729			1,729	
600 Supplies	2,382,315			2,382,315	
740 Depreciation	18,222			18,222	
770 Amortization Expense					
810 Dues and Fees	2,487			2,487	
880 Refunds of Prior Years' Receipts					
890 Miscellaneous Expenditures					
Total Operating Expenses	\$4,771,658			\$4,771,658	
Operating Income (Loss)	(\$1,782,094)			(\$1,782,094)	
Non Operating Revenues (Expenses)					
6500 Earnings on Investments	167,281			167,281	
6830 Federal Revenue from Intermediary Sources					
6920 Contributions and Donations from Private Sources					
6930 Gains or Losses on Sale of Fixed Assets	10,500			10,500	
6991 Refunds of a Prior Year Expenditure					
7000 Revenue from State Sources	665,503			665,503	
8000 Revenue from Federal Sources	1,448,906			1,448,906	
9990 Insurance Recoveries					
820 Claims and Judgments Against the LEA					
830 Interest					
TOTAL Non Operating Revenues (Expenses)	\$2,292,190			\$2,292,190	
Income (Loss) Before Contributions And Transfers	\$510,096			\$510,096	

Amounts Expressed in Whole Dollars	<u>Food Service</u> (51)	<u>Child Care Operations</u> (52)	<u>Other Enterprise</u> (58)	<u>TOTAL</u>	<u>Internal Service</u> (60)
Contributions, Transfers, and Special and Extraordinary Items					
5200 Interfund Transfers – Out					
5300 Transfers Out to Component Units/Primary Governments					
5520 Special Items – Losses					
5530 Extraordinary Items – Losses					
9300 Interfund Transfers - IN					
9500 Capital Contributions					
9700 Transfers IN From Component Units/Primary Governments					
9920 Special Items – Gains					
9930 Extraordinary Items – Gains					
Change In Net Position	\$510,096			\$510,096	
0002 Net Position - Beginning of Fiscal Year	(473,999)			(473,999)	
0003 Accounting Changes / Residual Equity Transfers					
Net Position - End Of Year	\$36,097			\$36,097	

Amounts Expressed in Whole Dollars	<u>Food Service</u> (51)	<u>Child Care Operations</u> (52)	<u>Other Enterprise</u> (58)	<u>TOTAL</u>	<u>Internal Service(60)</u>
Cash Flows From Operating Activities					
0011 Cash Receipts From Users	3,014,065			3,014,065	
0012 Cash Receipts From Assessments Made to Other Funds					
0013 Cash Receipts From Earnings on Investments					
0014 Cash Receipts From Other Operating Revenue					
0015 Cash Payments To Employees For Services	2,388,755			2,388,755	
0016 Cash Payments For Insurance Claims					
0017 Cash Payments To Suppliers For Goods and Services	1,531,569			1,531,569	
0018 Cash Payments For Other Operating Expenses					
Net Cash Provided By (Used For) Operating Activities	(\$906,259)			(\$906,259)	
Cash Flows From Non-Capital Financing Activities					
0021 Receipts From Local Sources - 6000					
0022 Receipts From State Sources - 7000	652,484			652,484	
0023 Receipts From Federal Sources -8000	1,185,120			1,185,120	
0024 Notes and Loans Received (Repaid)					
0025 Interest Paid on Notes/Loans - 5100-830					
0026 Operating Transfers In (Out)/Residual Equity Trans					
0027 Operating Transfers In (Out) Primary Government / Comp Unit					
0028 Receipts From Refund of Prior Year Expenditures - 6991					
0029 Special and Extraordinary Gains (losses)					
0030 Receipts from Insurance Recoveries -9990					
Net Cash Prov By (Used for) Non-Capital Financing Activities	\$1,837,604			\$1,837,604	
Cash Flows From Capital and Related Financing Activities					
0031 Payments For Fac Acq, Const, and Imp - 4000	(4,504)			(4,504)	
0032 Proceeds from Disposal of Capital Assets	10,500			10,500	
0033 Proceeds From Extended Term Financing - 9200					
0034 Principal Paid on Financing Agreements					
0035 Interest Paid on Financing Agreements - 5100-830					
0036 (Inc) Dec in Contributed Capital					
Net Cash Prov By (Used for) Capital and Related Financing Activities	\$5,996			\$5,996	
Cash Flows From Investing Activities					
0041 Earnings on Investments - 6500	167,281			167,281	
0042 Purchase of Inv Securities / Deposits to Inv Pools					
0043 Receipts From Investment Pool Withdrawals					
0044 Proceeds from Sale and Maturity of Inv Securities					

LEA : 123464502 Lower Merion SD

Printed 11/19/2024 9:37:39 AM

0045 Loans Received (Paid)		
Net Cash Prov By (Used for) Investing Activities	\$167,281	\$167,281

LEA : 123464502 Lower Merion SD

Printed 11/19/2024 9:37:39 AM

Page - 3 of 4

	<u>Food Service</u> <u>(51)</u>	<u>Child Care Operations</u> <u>(52)</u>	<u>Other Enterprise</u> <u>(58)</u>	<u>TOTAL</u>	<u>Internal Service</u> <u>(60)</u>
Net Increase (Decrease) in Cash Flows	1,104,622			1,104,622	
0004 Cash and Cash Equivalents Beginning of Year	2,309,954			2,309,954	
Cash and Cash Equivalents at Year End	\$3,414,576			\$3,414,576	
<hr/>					
Reconciliation of Operating Income (Loss) To Net Cash Provided by (Used For) Operating Activities					
0005 Operating Income (Loss) per REP	(1,782,094)			(1,782,094)	
Adjustments					
0051 Depreciation and Net Amortization	18,222			18,222	
0052 Provision for Uncollectible Accounts					
0053 Other Adjustments	283,573			283,573	
Effect of Changes in Assets, Liabilities, Deferred Outflows and Deferred Inflows					
0054 (Inc) Dec in Accounts Receivable (0120-0150)	(20,615)			(20,615)	
0055 Advances to Other Funds					
0056 (Inc) Dec in Inventories (0170)	8,645			8,645	
0057 (Inc) Dec in Prepaid Expenses (0180)					
0058 (Inc) Dec in Other Current or Noncurrent Assets					
0064 Deferred Outflows (0910)	(40,902)			(40,902)	
0059 Inc (Dec) in Accounts Payable (0400-0450)	627,513			627,513	
0060 Inc (Dec) in Accrued Salaries/Benefits (0461)					
0065 Inc (Dec) in Net Pension Liabilities (0570)	(1,195)			(1,195)	
0066 Inc (Dec) in Other Postemp Benefit Oblig (0560)	36,123			36,123	
0061 Inc (Dec) in Payroll Deductions/Withholding (0462)					
0062 Inc (Dec) in Unearned Revenue (0480)	15,837			15,837	
0063 Inc (Dec) in Other Current or Noncurrent Liabilities					
0067 Deferred Inflows (0950)	(51,366)			(51,366)	
Total Adjustments	\$875,835			\$875,835	
Cash Provided By (Used for) Total	(\$906,259)			(\$906,259)	

COMBINED STATEMENT OF CASH FLOWS
SCHEDULE OF NONCASH INVESTING, CAPITAL, AND FINANCING ACTIVITIES

Explanation of Transaction and Balance Sheet Effect	Amount
Total	

LEA : 123464502 Lower Merion SD

Printed 11/19/2024 9:37:41 AM

Amounts Expressed in Whole Dollars	<u>Private Purpose Trust</u> (71)	<u>Investment Trust</u> (72)	<u>Pension Trust</u> (73)	<u>Student Activity Custodial</u> (81)
Assets And Deferred Outflows Of Resources				
Assets				
0100 Cash and Cash Equivalents	134,609		272,000	800,978
0110 Investments				
0130 Due From Other Funds				
0140 Due from Other Governments, Primary Government and Component Units				
0150 Other Receivables				1,481
0170 Inventories				
0180 Prepaid Expenses (Expenditures)				
0190 Other Current Assets				
0220 Buildings and Building Improvements (Net)				
0230 Tangible Property and Intangible Right-To-Use Assets (Net)				
Total Assets	\$134,609		\$272,000	\$802,459
0910 Deferred Outflows of Resources				
Total Assets And Deferred Outflows Of Resources	\$134,609		\$272,000	\$802,459

LEA : 123464502 Lower Merion SD

Printed 11/19/2024 9:37:41 AM

Amounts Expressed in Whole Dollars	Other Custodial (89)	Fiduciary Component Units (98)	Total Fiduciary Funds
Assets And Deferred Outflows Of Resources			
Assets			
0100 Cash and Cash Equivalents			1,207,587
0110 Investments			
0130 Due From Other Funds			
0140 Due from Other Governments, Primary Government and Component Units			
0150 Other Receivables			1,481
0170 Inventories			
0180 Prepaid Expenses (Expenditures)			
0190 Other Current Assets			
0220 Buildings and Building Improvements (Net)			
0230 Tangible Property and Intangible Right-To-Use Assets (Net)			
Total Assets			\$1,209,068
0910 Deferred Outflows of Resources			
Total Assets And Deferred Outflows Of Resources			\$1,209,068

LEA : 123464502 Lower Merion SD

Printed 11/19/2024 9:37:41 AM

Amounts Expressed in Whole Dollars	Private Purpose Trust (71)	Investment Trust (72)	Pension Trust (73)	Student Activity Custodial (81)
Liabilities, Deferred Inflows Of Resources And Net Position				
Liabilities				
0400 Due to Other Funds				
0410 Due to Other Governments, Primary Government and Component Units				
0420 Accounts Payable				
0430 Contracts Payable				
0450 Short-Term Payables				
0460 Payroll Accruals and Withholdings				
0480 Unearned Revenues				
0490 Other Current Liabilities				97,719
Total Liabilities				\$97,719
0950 Deferred Inflows of Resources				
Net Position				
0791 Net Investment in Capital Assets				
0009 Restricted Net Position (0792 – 0798)	134,609		272,000	704,740
0799 Unrestricted Net Position				
Total Net Position	\$134,609		\$272,000	\$704,740
Total Liabilities, Deferred Inflows Of Resources And Net Position	\$134,609		\$272,000	\$802,459

LEA : 123464502 Lower Merion SD

Printed 11/19/2024 9:37:41 AM

Amounts Expressed in Whole Dollars	Other Custodial (89)	Fiduciary Component Units (98)	Total Fiduciary Funds
Liabilities, Deferred Inflows Of Resources And Net Position			
Liabilities			
0400 Due to Other Funds			
0410 Due to Other Governments, Primary Government and Component Units			
0420 Accounts Payable			
0430 Contracts Payable			
0450 Short-Term Payables			
0460 Payroll Accruals and Withholdings			
0480 Unearned Revenues			
0490 Other Current Liabilities			97,719
Total Liabilities			\$97,719
0950 Deferred Inflows of Resources			
Net Position			
0791 Net Investment in Capital Assets			
0009 Restricted Net Position (0792 – 0798)			1,111,349
0799 Unrestricted Net Position			
Total Net Position			\$1,111,349
Total Liabilities, Deferred Inflows Of Resources And Net Position			\$1,209,068

Amounts Expressed in Whole Dollars	<u>Private Purpose Trust</u> (71)	<u>Investment Trust</u> (72)	<u>Pension Trust</u> (73)	<u>Student Activity</u> <u>Custodial</u> (81)	<u>Other Custodial</u> (89)	<u>Fiduciary Component</u> <u>Units</u> (98)
Additions						
0091 Gifts and Contributions				1,065,835		
0095 Net Investment Earnings	7,547		14,278	32,774		
0092 Other Additions						
Deductions						
0093 Scholarships Awarded	5,000					
0094 Other Deductions			34,972	982,044		
Change In Net Position	\$2,547		(\$20,694)	\$116,565		
0006 Net Position – Beginning of Fiscal Year	132,062		292,694	588,175		
0007 Net Position Held in Trust for Pension Benefits						
Net Position - End of Fiscal Year	\$134,609		\$272,000	\$704,740		

Amounts Expressed in Whole Dollars		<u>Total Fiduciary</u>
		<u>Funds</u>
Additions		
0091	Gifts and Contributions	1,065,835
0095	Net Investment Earnings	54,599
0092	Other Additions	
Deductions		
0093	Scholarships Awarded	5,000
0094	Other Deductions	1,017,016
Change in Net Position		\$98,418
0006	Net Position – Beginning of Fiscal Year	1,012,931
0007	Net Position Held in Trust for Pension Benefits	
Net Position - End of Fiscal Year		\$1,111,349

	Revenue Reported In Current Year	Current Year Tax Accrual	Prior Year Tax Accrual	Taxes Collected In Current Year
Revenue from Local Sources				
6111 Current Real Estate Taxes	246,253,787.44			246,253,787.44
6112 Interim Real Estate Taxes	575,056.33	(7,267.96)	38.07	582,362.36
6113 Public Utility Realty Taxes	224,109.14			224,109.14
6143 Current Act 511 Local Services Taxes	255,537.91	59,944.21	61,190.61	256,784.31
6153 Current Act 511 Real Estate Transfer Taxes	5,275,143.48	474,898.44	482,490.91	5,282,735.95
6411 Delinquent Real Estate Taxes	3,334,492.85	238,022.42	70,147.23	3,166,617.66
6500 Earnings on Investments	7,281,000.46			
6700 Revenues from LEA Activities	34,414.00			
6832 Federal IDEA Revenue Received as Pass Through	1,896,198.07			
6837 Federal COVID Related Revenue Received as Pass Through	200,000.00			
6910 Rentals	313,753.84			
6942 Summer School Tuition	132,479.31			
6980 Revenue from Community Services Activities	66,455.00			
6991 Refunds of a Prior Year Expenditure	1,627,786.68			
6999 Other Revenues Not Specified Above	13,216.94			
TOTAL Revenue from Local Sources	\$267,483,431.45	\$765,597.11	\$613,866.82	\$255,766,396.86

	Revenue Reported In Current Year
Revenue from State Sources	
7111 Basic Education Funding-Formula	5,715,515.65
7160 Tuition for Orphans Subsidy	276,734.75
7271 Special Education funds for School-Aged Pupils	3,482,610.17
7311 Pupil Transportation Subsidy	1,421,873.06
7312 Nonpublic and Charter School Pupil Transportation Subsidy	386,540.00
7320 Rental and Sinking Fund Payments / Building Reimbursement Subsidy	373,561.10
7330 Health Services (Medical, Dental, Nurse, Act 25)	240,969.96
7340 State Property Tax Reduction Allocation	4,378,610.97
7362 School Mental Health & Safety and Security Grants	521,677.36
7505 Ready to Learn Block Grant	240,611.00
7810 State Share of Social Security and Medicare Taxes	5,526,820.61
7820 State Share of Retirement Contributions	25,123,411.19
TOTAL Revenue from State Sources	\$47,688,935.82

	Revenue Reported In Current Year			
Revenue from Federal Sources				
8514 Title I - Improving the Academic Achievement of the Disadvantaged	395,519.01			
8515 Title II - Preparing, Training, and Recruiting High Quality Teachers and Principals	169,740.00			
8516 Title III - Language Instruction for English Learners and Immigrant Students	57,967.74			
8517 Title IV - 21st Century Schools	22,322.00			
8744 ARP ESSER - Elementary and Secondary School Emergency Relief Fund	617,944.97			
8751 ARP ESSER Learning Loss	(20.00)			
8810 School-Based Access Medicaid Reimbursement Program (SBAP) Reimbursements (Access)	808,424.48			
8820 Medical Assistance Reimbursement for Administrative Claiming (Quarterly) Program	39,444.60			
TOTAL Revenue from Federal Sources	\$2,111,342.80			
TOTAL FROM ALL SOURCES	\$317,283,710.07	\$765,597.11	\$613,866.82	\$255,766,396.86

LEA : 123464502 Lower Merion SD

Printed 11/19/2024 9:37:46 AM

Page - 1 of 4

	<u>General Fund (10)</u>	<u>Student Sponsored Activity Fund (21)</u>	<u>Public Purpose Trust (27)</u>	<u>Other Compt Approved (28)</u>	<u>Athletic / Activity (29)</u>	<u>Capital Reserve (690, 1850) (31)</u>
6000 Revenue from Local Sources						
6111 Current Real Estate Taxes	246,253,787.44					
6112 Interim Real Estate Taxes	575,056.33					
6113 Public Utility Realty Taxes	224,109.14					
6143 Current Act 511 Local Services Taxes	255,537.91					
6153 Current Act 511 Real Estate Transfer Taxes	5,275,143.48					
6411 Delinquent Real Estate Taxes	3,334,492.85					
6500 Earnings on Investments	7,281,000.46					
6700 Revenues from LEA Activities	34,414.00					
6832 Federal IDEA Revenue Received as Pass Through	1,896,198.07					
6837 Federal COVID Related Revenue Received as Pass Through	200,000.00					
6910 Rentals	313,753.84					
6942 Summer School Tuition	132,479.31					
6980 Revenue from Community Services Activities	66,455.00					
6991 Refunds of a Prior Year Expenditure	1,627,786.68					
6999 Other Revenues Not Specified Above	13,216.94					
6000 Total Revenue from Local Sources	\$267,483,431.45					
7000 Revenue from State Sources						
7111 Basic Education Funding-Formula	5,715,515.65					
7160 Tuition for Orphans Subsidy	276,734.75					
7271 Special Education funds for School-Aged Pupils	3,482,610.17					
7311 Pupil Transportation Subsidy	1,421,873.06					
7312 Nonpublic and Charter School Pupil Transportation Subsidy	386,540.00					
7320 Rental and Sinking Fund Payments / Building Reimbursement Subsidy	373,561.10					
7330 Health Services (Medical, Dental, Nurse, Act 25)	240,969.96					
7340 State Property Tax Reduction Allocation	4,378,610.97					
7362 School Mental Health & Safety and Security Grants	521,677.36					
7505 Ready to Learn Block Grant	240,611.00					
7810 State Share of Social Security and Medicare Taxes	5,526,820.61					
7820 State Share of Retirement Contributions	25,123,411.19					
7000 Total Revenue from State Sources	\$47,688,935.82					
8000 Revenue from Federal Sources						
8514 Title I - Improving the Academic Achievement of the Disadvantaged	395,519.01					
8515 Title II - Preparing, Training, and Recruiting High Quality Teachers and Principals	169,740.00					

LEA : 123464502 Lower Merion SD

Printed 11/19/2024 9:37:46 AM

Page - 2 of 4

	<u>Capital Reserve</u> <u>(1431) (32)</u>	<u>Other Capital</u> <u>Projects Fund (39)</u>	<u>Debt Service (40)</u>	<u>Permanent (90)</u>	<u>Total</u>
6000 Revenue from Local Sources					
6111 Current Real Estate Taxes					246,253,787.44
6112 Interim Real Estate Taxes					575,056.33
6113 Public Utility Realty Taxes					224,109.14
6143 Current Act 511 Local Services Taxes					255,537.91
6153 Current Act 511 Real Estate Transfer Taxes					5,275,143.48
6411 Delinquent Real Estate Taxes					3,334,492.85
6500 Earnings on Investments	321,395.70	349,208.44	242,433.42		8,194,038.02
6700 Revenues from LEA Activities					34,414.00
6832 Federal IDEA Revenue Received as Pass Through					1,896,198.07
6837 Federal COVID Related Revenue Received as Pass Through					200,000.00
6910 Rentals					313,753.84
6942 Summer School Tuition					132,479.31
6980 Revenue from Community Services Activities					66,455.00
6991 Refunds of a Prior Year Expenditure					1,627,786.68
6999 Other Revenues Not Specified Above					13,216.94
6000 Total Revenue from Local Sources	\$321,395.70	\$349,208.44	\$242,433.42		\$268,396,469.01
7000 Revenue from State Sources					
7111 Basic Education Funding-Formula					5,715,515.65
7160 Tuition for Orphans Subsidy					276,734.75
7271 Special Education funds for School-Aged Pupils					3,482,610.17
7311 Pupil Transportation Subsidy					1,421,873.06
7312 Nonpublic and Charter School Pupil Transportation Subsidy					386,540.00
7320 Rental and Sinking Fund Payments / Building Reimbursement Subsidy					373,561.10
7330 Health Services (Medical, Dental, Nurse, Act 25)					240,969.96
7340 State Property Tax Reduction Allocation					4,378,610.97
7362 School Mental Health & Safety and Security Grants					521,677.36
7505 Ready to Learn Block Grant					240,611.00
7810 State Share of Social Security and Medicare Taxes					5,526,820.61
7820 State Share of Retirement Contributions					25,123,411.19
7000 Total Revenue from State Sources					\$47,688,935.82
8000 Revenue from Federal Sources					
8514 Title I - Improving the Academic Achievement of the Disadvantaged					395,519.01
8515 Title II - Preparing, Training, and Recruiting High Quality Teachers and Principals					169,740.00

LEA : 123464502 Lower Merion SD

Printed 11/19/2024 9:37:46 AM

	<u>General Fund (10)</u>	<u>Student Sponsored Activity Fund (21)</u>	<u>Public Purpose Trust (27)</u>	<u>Other Compt Approved (28)</u>	<u>Athletic / Activity (29)</u>	<u>Capital Reserve (690, 1850) (31)</u>
8000 Revenue from Federal Sources						
8516 Title III - Language Instruction for English Learners and Immigrant Students	57,967.74					
8517 Title IV - 21st Century Schools	22,322.00					
8744 ARP ESSER - Elementary and Secondary School Emergency Relief Fund	617,944.97					
8751 ARP ESSER Learning Loss	(20.00)					
8810 School-Based Access Medicaid Reimbursement Program (SBAP) Reimbursements (Access)	808,424.48					
8820 Medical Assistance Reimbursement for Administrative Claiming (Quarterly) Program	39,444.60					
8000 Total Revenue from Federal Sources	\$2,111,342.80					
9000 Other Financing Sources						
9310 General Fund Transfers						
9990 Insurance Recoveries						
9000 Total Other Financing Sources						
Total From All Sources	\$317,283,710.07					

	<u>Capital Reserve</u> <u>(1431) (32)</u>	<u>Other Capital</u> <u>Projects Fund (39)</u>	<u>Debt Service (40)</u>	<u>Permanent (90)</u>	<u>Total</u>
8000 Revenue from Federal Sources					
8516 Title III - Language Instruction for English Learners and Immigrant Students					57,967.74
8517 Title IV - 21st Century Schools					22,322.00
8744 ARP ESSER - Elementary and Secondary School Emergency Relief Fund					617,944.97
8751 ARP ESSER Learning Loss					(20.00)
8810 School-Based Access Medicaid Reimbursement Program (SBAP) Reimbursements (Access)					808,424.48
8820 Medical Assistance Reimbursement for Administrative Claiming (Quarterly) Program					39,444.60
8000 Total Revenue from Federal Sources					\$2,111,342.80
9000 Other Financing Sources					
9310 General Fund Transfers	2,900,000.00				2,900,000.00
9990 Insurance Recoveries		314,067.65			314,067.65
9000 Total Other Financing Sources	\$2,900,000.00	\$314,067.65			\$3,214,067.65
Total From All Sources	\$3,221,395.70	\$663,276.09	\$242,433.42		\$321,410,815.28

	<u>General Fund (10)</u>	<u>Student Sponsored Activity Fund (21)</u>	<u>Public Purpose Trust (27)</u>	<u>Other Compt Approved (28)</u>	<u>Athletic / Activity (29)</u>	<u>Capital Reserve (690, 1850) (31)</u>
Revenue from Local Sources	267,483,431.45					
Revenue from State Sources	47,688,935.82					
Revenue from Federal Sources	2,111,342.80					
Other Financing Sources						
Total From All Sources	\$317,283,710.07					

	<u>Capital Reserve (1431)</u> <u>(32)</u>	<u>Other Capital Projects</u> <u>Fund (39)</u>	<u>Debt Service (40)</u>	<u>Permanent (90)</u>	<u>Total</u>
Revenue from Local Sources	321,395.70	349,208.44	242,433.42		268,396,469.01
Revenue from State Sources					47,688,935.82
Revenue from Federal Sources					2,111,342.80
Other Financing Sources	2,900,000.00	314,067.65			3,214,067.65
Total From All Sources	\$3,221,395.70	\$663,276.09	\$242,433.42		\$321,410,815.28

LEA : 123464502 Lower Merion SD

Printed 11/19/2024 9:37:55 AM

Page - 1 of 25

General Fund (10)

		<u>Total</u>
1000 Instruction		
100 <u>Personnel Services – Salaries</u>		
100 Personnel Services – Salaries		99,973,154.45
Total Personnel Services – Salaries		\$99,973,154.45
200 <u>Personnel Services – Employee Benefits</u>		
210 Group Insurance – Contracted Provider		432,806.00
220 Social Security Contributions		7,485,306.73
230 PSERS Retirement Contributions		34,063,996.38
250 Unemployment Compensation		11,283.00
260 Workers' Compensation		579,603.00
270 Group Insurance – Self-Insurance		18,740,926.17
280 Other Post-Employment Benefits (OPEB)		295,225.00
Total Personnel Services – Employee Benefits		\$61,609,146.28
300 <u>Purchased Professional and Technical Services</u>		
322 Professional Educational Services – Ius		2,962,642.97
323 Professional Educational Services – Other Educational Agencies		45,123.49
329 Professional Educational Services – Other		590,916.44
330 Other Professional Services		1,772,829.85
340 Technical Services		38,086.60
Total Purchased Professional and Technical Services		\$5,409,599.35
400 <u>Purchased Property Services</u>		
430 Repairs and Maintenance Services		78,998.51
440 Rentals		1,036.92
Total Purchased Property Services		\$80,035.43
500 <u>Other Purchased Services</u>		
510 Student Transportation Services		92,592.00
530 Communications		1,634.05
561 Tuition To Other School Districts Within the State		6,923.44
562 Tuition To Pennsylvania Charter Schools		1,431,333.69
563 Tuition To Nonpublic Schools		2,989,802.03
564 Tuition To Career and Technology Centers		943,208.38
567 Tuition To Approved Private Schools (APS) and PA Chartered Schools for the Deaf and Blind		2,318,627.37
568 Tuition To Private Residential Rehabilitative Institutions (PRRI) [In-State] and Detention Centers		20,463.00
569 Tuition – Other		61,665.00
580 Travel		13,789.37
594 IU Payment By Withholding for Institutionalized Children's Programs – Special Classes		1,497.24
Total Other Purchased Services		\$7,881,535.57
600 <u>Supplies</u>		
610 General Supplies		1,299,056.89
630 Food		13,906.03
640 Books and Periodicals		669,277.80
650 Supplies & Fees – Technology Related		3,883,009.80
Total Supplies		\$5,865,250.52

LEA : 123464502 Lower Merion SD

Printed 11/19/2024 9:37:55 AM

General Fund (10)

1000 Instruction	Total
800 <u>Other Objects</u>	
810 Dues and Fees	38,969.04
890 Miscellaneous Expenditures	54,005.70
Total Other Objects	\$92,974.74
Total 1000 Instruction	\$180,911,696.34

LEA : 123464502 Lower Merion SD

Printed 11/19/2024 9:37:55 AM

Page - 3 of 25

General Fund (10)**1100 Regular Programs – Elementary / Secondary**

	<u>Elementary</u>	<u>Secondary</u>	<u>Federal</u>	<u>Total</u>
100 Personnel Services – Salaries				
100 Personnel Services – Salaries	33,685,071.41	36,947,728.22	422,230.16	71,055,029.79
Total Personnel Services – Salaries	\$33,685,071.41	\$36,947,728.22	\$422,230.16	\$71,055,029.79
200 Personnel Services – Employee Benefits				
210 Group Insurance – Contracted Provider	136,717.26	139,899.74		276,617.00
220 Social Security Contributions	2,525,838.49	2,772,058.95	15,568.32	5,313,465.76
230 PSERS Retirement Contributions	11,602,386.15	12,612,479.34	59,005.38	24,273,870.87
250 Unemployment Compensation	3,559.57	3,646.43		7,206.00
260 Workers' Compensation	183,060.86	187,357.14		370,418.00
270 Group Insurance – Self-Insurance	5,857,612.52	6,064,490.49	8,047.36	11,930,150.37
280 Other Post-Employment Benefits (OPEB)	118,760.93	78,439.07		197,200.00
Total Personnel Services – Employee Benefits	\$20,427,935.78	\$21,858,371.16	\$82,621.06	\$42,368,928.00
300 Purchased Professional and Technical Services				
322 Professional Educational Services – Ius		371.50	8,213.44	8,584.94
323 Professional Educational Services – Other Educational Agencies		212.50		212.50
329 Professional Educational Services – Other	150,945.11	285,913.37		436,858.48
330 Other Professional Services	4,541.92	587,422.44	173,827.99	765,792.35
340 Technical Services	38,086.60			38,086.60
Total Purchased Professional and Technical Services	\$193,573.63	\$873,919.81	\$182,041.43	\$1,249,534.87
400 Purchased Property Services				
430 Repairs and Maintenance Services	36,645.95	42,352.56		78,998.51
440 Rentals		1,036.92		1,036.92
Total Purchased Property Services	\$36,645.95	\$43,389.48		\$80,035.43
500 Other Purchased Services				
510 Student Transportation Services	530.00	92,062.00		92,592.00
530 Communications	12.54	1,621.51		1,634.05
562 Tuition To Pennsylvania Charter Schools	161,706.35	328,287.25		489,993.60
563 Tuition To Nonpublic Schools		2,693.25		2,693.25
569 Tuition – Other		56,865.00		56,865.00
580 Travel	57.84	867.29		925.13
Total Other Purchased Services	\$162,306.73	\$482,396.30		\$644,703.03
600 Supplies				
610 General Supplies	592,561.58	598,978.06	9,735.28	1,201,274.92
630 Food	612.00	742.50		1,354.50
640 Books and Periodicals	378,433.37	197,128.28	81,072.99	656,634.64
650 Supplies & Fees – Technology Related	1,666,228.79	1,933,103.32	103,494.00	3,702,826.11
Total Supplies	\$2,637,835.74	\$2,729,952.16	\$194,302.27	\$5,562,090.17
800 Other Objects				
810 Dues and Fees	3,800.51	27,693.53		31,494.04
890 Miscellaneous Expenditures	43,331.45	10,674.25		54,005.70
Total Other Objects	\$47,131.96	\$38,367.78		\$85,499.74
Total 1100 Regular Programs – Elementary / Secondary	\$57,190,501.20	\$62,974,124.91	\$881,194.92	\$121,045,821.03

LEA : 123464502 Lower Merion SD

Printed 11/19/2024 9:37:55 AM

Page - 4 of 25

General Fund (10)

	<u>Elementary</u>	<u>Secondary</u>	<u>Federal</u>	<u>Total</u>
1110 Regular Programs				
100 Personnel Services – Salaries				
100 Personnel Services – Salaries	33,685,071.41	36,947,728.22	207,590.44	70,840,390.07
Total Personnel Services – Salaries	\$33,685,071.41	\$36,947,728.22	\$207,590.44	\$70,840,390.07
200 Personnel Services – Employee Benefits				
210 Group Insurance – Contracted Provider	136,717.26	139,899.74		276,617.00
220 Social Security Contributions	2,525,838.49	2,772,058.95	7,940.35	5,305,837.79
230 PSERS Retirement Contributions	11,602,386.15	12,612,479.34	24,405.59	24,239,271.08
250 Unemployment Compensation	3,559.57	3,646.43		7,206.00
260 Workers' Compensation	183,060.86	187,357.14		370,418.00
270 Group Insurance – Self-Insurance	5,857,612.52	6,064,490.49		11,922,103.01
280 Other Post-Employment Benefits (OPEB)	118,760.93	78,439.07		197,200.00
Total Personnel Services – Employee Benefits	\$20,427,935.78	\$21,858,371.16	\$32,345.94	\$42,318,652.88
300 Purchased Professional and Technical Services				
322 Professional Educational Services – Ius		371.50	8,213.44	8,584.94
323 Professional Educational Services – Other Educational Agencies		212.50		212.50
329 Professional Educational Services – Other	150,945.11	285,913.37		436,858.48
330 Other Professional Services	4,541.92	587,422.44	173,827.99	765,792.35
340 Technical Services	38,086.60			38,086.60
Total Purchased Professional and Technical Services	\$193,573.63	\$873,919.81	\$182,041.43	\$1,249,534.87
400 Purchased Property Services				
430 Repairs and Maintenance Services	36,645.95	42,352.56		78,998.51
440 Rentals		1,036.92		1,036.92
Total Purchased Property Services	\$36,645.95	\$43,389.48		\$80,035.43
500 Other Purchased Services				
510 Student Transportation Services	530.00	92,062.00		92,592.00
530 Communications	12.54	1,621.51		1,634.05
562 Tuition To Pennsylvania Charter Schools	161,706.35	328,287.25		489,993.60
563 Tuition To Nonpublic Schools		2,693.25		2,693.25
569 Tuition – Other		56,865.00		56,865.00
580 Travel	57.84	867.29		925.13
Total Other Purchased Services	\$162,306.73	\$482,396.30		\$644,703.03
600 Supplies				
610 General Supplies	592,561.58	598,978.06	9,735.28	1,201,274.92
630 Food	612.00	742.50		1,354.50
640 Books and Periodicals	378,433.37	197,128.28	22,622.05	598,183.70
650 Supplies & Fees – Technology Related	1,666,228.79	1,933,103.32	103,494.00	3,702,826.11
Total Supplies	\$2,637,835.74	\$2,729,952.16	\$135,851.33	\$5,503,639.23
800 Other Objects				
810 Dues and Fees	3,800.51	27,693.53		31,494.04
890 Miscellaneous Expenditures	43,331.45	10,674.25		54,005.70
Total Other Objects	\$47,131.96	\$38,367.78		\$85,499.74
Total 1110 Regular Programs	\$57,190,501.20	\$62,974,124.91	\$557,829.14	\$120,722,455.25

LEA : 123464502 Lower Merion SD

Printed 11/19/2024 9:37:55 AM

General Fund (10)

1190 Federally-Funded Regular Programs	<u>Elementary</u>	<u>Secondary</u>	<u>Federal</u>	<u>Total</u>
100 <u>Personnel Services – Salaries</u>				
100 Personnel Services – Salaries			214,639.72	214,639.72
Total Personnel Services – Salaries			\$214,639.72	\$214,639.72
200 <u>Personnel Services – Employee Benefits</u>				
220 Social Security Contributions			7,627.97	7,627.97
230 PSERS Retirement Contributions			34,599.79	34,599.79
270 Group Insurance – Self-Insurance			8,047.36	8,047.36
Total Personnel Services – Employee Benefits			\$50,275.12	\$50,275.12
600 <u>Supplies</u>				
640 Books and Periodicals			58,450.94	58,450.94
Total Supplies			\$58,450.94	\$58,450.94
Total 1190 Federally-Funded Regular Programs			\$323,365.78	\$323,365.78

LEA : 123464502 Lower Merion SD

Printed 11/19/2024 9:37:55 AM

Page - 6 of 25

General Fund (10)

1200 Special Programs – Elementary / Secondary

	<u>Elementary</u>	<u>Secondary</u>	<u>Federal</u>	<u>Total</u>
100 Personnel Services – Salaries				
100 Personnel Services – Salaries	14,679,677.21	13,504,965.10	68,497.00	28,253,139.31
Total Personnel Services – Salaries	\$14,679,677.21	\$13,504,965.10	\$68,497.00	\$28,253,139.31
200 Personnel Services – Employee Benefits				
210 Group Insurance – Contracted Provider	83,918.27	72,270.73		156,189.00
220 Social Security Contributions	1,103,882.92	1,014,197.34	2,436.41	2,120,516.67
230 PSERS Retirement Contributions	4,962,033.95	4,588,646.96	10,828.49	9,561,509.40
250 Unemployment Compensation	2,196.77	1,880.23		4,077.00
260 Workers' Compensation	112,392.94	96,792.06		209,185.00
270 Group Insurance – Self-Insurance	3,678,709.54	3,132,066.26		6,810,775.80
280 Other Post-Employment Benefits (OPEB)	94,849.32	3,175.68		98,025.00
Total Personnel Services – Employee Benefits	\$10,037,983.71	\$8,909,029.26	\$13,264.90	\$18,960,277.87
300 Purchased Professional and Technical Services				
322 Professional Educational Services – Ius	192,337.45	847,113.51	1,891,398.07	2,930,849.03
323 Professional Educational Services – Other Educational Agencies		25,016.92		25,016.92
329 Professional Educational Services – Other	75,249.96	66,808.00		142,057.96
330 Other Professional Services	105,381.78	98,231.24	803,424.48	1,007,037.50
Total Purchased Professional and Technical Services	\$372,969.19	\$1,037,169.67	\$2,694,822.55	\$4,104,961.41
500 Other Purchased Services				
562 Tuition To Pennsylvania Charter Schools	199,009.38	742,330.71		941,340.09
563 Tuition To Nonpublic Schools	238,739.00	2,748,369.78		2,987,108.78
567 Tuition To Approved Private Schools (APS) and PA Chartered Schools for the Deaf and Blind	457,462.70	1,861,164.67		2,318,627.37
580 Travel	163.16	2,003.08		2,166.24
594 IU Payment By Withholding for Institutionalized Children's Programs – Special Classes		1,497.24		1,497.24
Total Other Purchased Services	\$895,374.24	\$5,355,365.48		\$6,250,739.72
600 Supplies				
610 General Supplies	31,168.94	24,043.04		55,211.98
640 Books and Periodicals	6,895.16	3,588.33		10,483.49
650 Supplies & Fees – Technology Related	74,737.75	71,971.94		146,709.69
Total Supplies	\$112,801.85	\$99,603.31		\$212,405.16
Total 1200 Special Programs – Elementary / Secondary	\$26,098,806.20	\$28,906,132.82	\$2,776,584.45	\$57,781,523.47

LEA : 123464502 Lower Merion SD

Printed 11/19/2024 9:37:55 AM

Page - 7 of 25

General Fund (10)

1210 Life Skills Support

	<u>Elementary</u>	<u>Secondary</u>	<u>Federal</u>	<u>Total</u>
100 Personnel Services – Salaries				
100 Personnel Services – Salaries	339,902.23	379,095.62		718,997.85
Total Personnel Services – Salaries	\$339,902.23	\$379,095.62		\$718,997.85
200 Personnel Services – Employee Benefits				
210 Group Insurance – Contracted Provider	2,168.35	2,566.65		4,735.00
220 Social Security Contributions	25,047.03	28,125.97		53,173.00
230 PSERS Retirement Contributions	124,691.97	128,745.40		253,437.37
250 Unemployment Compensation	57.02	66.98		124.00
260 Workers' Compensation	2,905.64	3,440.36		6,346.00
270 Group Insurance – Self-Insurance	90,057.17	108,293.53		198,350.70
Total Personnel Services – Employee Benefits	\$244,927.18	\$271,238.89		\$516,166.07
300 Purchased Professional and Technical Services				
322 Professional Educational Services – Ius	8,780.12	142,452.94	432,350.79	583,583.85
329 Professional Educational Services – Other	1,059.77	1,773.67		2,833.44
Total Purchased Professional and Technical Services	\$9,839.89	\$144,226.61	\$432,350.79	\$586,417.29
500 Other Purchased Services				
563 Tuition To Nonpublic Schools		15,400.00		15,400.00
567 Tuition To Approved Private Schools (APS) and PA Chartered Schools for the Deaf and Blind	122,027.80	421,070.43		543,098.23
580 Travel		1,751.15		1,751.15
Total Other Purchased Services	\$122,027.80	\$438,221.58		\$560,249.38
600 Supplies				
610 General Supplies	1,275.30	2,624.40		3,899.70
640 Books and Periodicals	534.34	279.26		813.60
650 Supplies & Fees – Technology Related	18,457.08	17,006.51		35,463.59
Total Supplies	\$20,266.72	\$19,910.17		\$40,176.89
Total 1210 Life Skills Support	\$736,963.82	\$1,252,692.87	\$432,350.79	\$2,422,007.48

LEA : 123464502 Lower Merion SD

Printed 11/19/2024 9:37:55 AM

Page - 8 of 25

General Fund (10)

1220 Sensory Support

	<u>Elementary</u>	<u>Secondary</u>	<u>Federal</u>	<u>Total</u>
100 Personnel Services – Salaries				
100 Personnel Services – Salaries	1,666,519.33	599,576.01		2,266,095.34
Total Personnel Services – Salaries	\$1,666,519.33	\$599,576.01		\$2,266,095.34
200 Personnel Services – Employee Benefits				
210 Group Insurance – Contracted Provider	7,686.69	2,966.31		10,653.00
220 Social Security Contributions	124,569.88	44,775.42		169,345.30
230 PSERS Retirement Contributions	566,339.86	203,855.80		770,195.66
250 Unemployment Compensation	201.12	77.88		279.00
260 Workers' Compensation	10,293.29	3,971.71		14,265.00
270 Group Insurance – Self-Insurance	325,676.22	123,152.06		448,828.28
280 Other Post-Employment Benefits (OPEB)	49,350.00			49,350.00
Total Personnel Services – Employee Benefits	\$1,084,117.06	\$378,799.18		\$1,462,916.24
300 Purchased Professional and Technical Services				
322 Professional Educational Services – lus	47,205.36	37,659.40	655,394.83	740,259.59
330 Other Professional Services			8,978.36	8,978.36
Total Purchased Professional and Technical Services	\$47,205.36	\$37,659.40	\$664,373.19	\$749,237.95
500 Other Purchased Services				
563 Tuition To Nonpublic Schools	28,000.00	69,460.00		97,460.00
580 Travel		176.20		176.20
Total Other Purchased Services	\$28,000.00	\$69,636.20		\$97,636.20
600 Supplies				
610 General Supplies	1,961.18	870.42		2,831.60
640 Books and Periodicals	112.66			112.66
650 Supplies & Fees – Technology Related	22,513.14	16,507.96		39,021.10
Total Supplies	\$24,586.98	\$17,378.38		\$41,965.36
Total 1220 Sensory Support	\$2,850,428.73	\$1,103,049.17	\$664,373.19	\$4,617,851.09

LEA : 123464502 Lower Merion SD

Printed 11/19/2024 9:37:55 AM

Page - 9 of 25

General Fund (10)**1230 Emotional Support**

	<u>Elementary</u>	<u>Secondary</u>	<u>Federal</u>	<u>Total</u>
100 Personnel Services – Salaries				
100 Personnel Services – Salaries	5,501,777.25	4,477,164.47	68,497.00	10,047,438.72
Total Personnel Services – Salaries	\$5,501,777.25	\$4,477,164.47	\$68,497.00	\$10,047,438.72
200 Personnel Services – Employee Benefits				
210 Group Insurance – Contracted Provider	32,650.75	23,371.25		56,022.00
220 Social Security Contributions	414,588.24	339,098.39	2,436.41	756,123.04
230 PSERS Retirement Contributions	1,856,230.68	1,522,730.52	10,828.49	3,389,789.69
250 Unemployment Compensation	853.64	609.36		1,463.00
260 Workers' Compensation	43,729.09	31,304.91		75,034.00
270 Group Insurance – Self-Insurance	1,434,871.35	1,019,364.96		2,454,236.31
280 Other Post-Employment Benefits (OPEB)	2,210.26	1,339.74		3,550.00
Total Personnel Services – Employee Benefits	\$3,785,134.01	\$2,937,819.13	\$13,264.90	\$6,736,218.04
300 Purchased Professional and Technical Services				
322 Professional Educational Services – Ius	88,381.48	371,263.83	610,875.68	1,070,520.99
323 Professional Educational Services – Other Educational Agencies		25,016.92		25,016.92
329 Professional Educational Services – Other	29,147.82	19,123.60		48,271.42
330 Other Professional Services	7,150.53			7,150.53
Total Purchased Professional and Technical Services	\$124,679.83	\$415,404.35	\$610,875.68	\$1,150,959.86
500 Other Purchased Services				
563 Tuition To Nonpublic Schools	186,889.00	1,832,558.76		2,019,447.76
567 Tuition To Approved Private Schools (APS) and PA Chartered Schools for the Deaf and Blind	14,644.39	634,956.55		649,600.94
Total Other Purchased Services	\$201,533.39	\$2,467,515.31		\$2,669,048.70
600 Supplies				
610 General Supplies	10,148.70	2,136.35		12,285.05
640 Books and Periodicals	3,221.78	691.39		3,913.17
650 Supplies & Fees – Technology Related	17,971.83	23,576.97		41,548.80
Total Supplies	\$31,342.31	\$26,404.71		\$57,747.02
Total 1230 Emotional Support	\$9,644,466.79	\$10,324,307.97	\$692,637.58	\$20,661,412.34

LEA : 123464502 Lower Merion SD

Printed 11/19/2024 9:37:55 AM

Page - 10 of 25

General Fund (10)

1240 Academic Support

	<u>Elementary</u>	<u>Secondary</u>	<u>Federal</u>	<u>Total</u>
100 Personnel Services – Salaries				
100 Personnel Services – Salaries	7,171,478.40	8,049,129.00		15,220,607.40
Total Personnel Services – Salaries	\$7,171,478.40	\$8,049,129.00		\$15,220,607.40
200 Personnel Services – Employee Benefits				
210 Group Insurance – Contracted Provider	41,412.48	43,366.52		84,779.00
220 Social Security Contributions	539,677.77	602,197.56		1,141,875.33
230 PSERS Retirement Contributions	2,414,771.44	2,733,315.24		5,148,086.68
250 Unemployment Compensation	1,084.99	1,126.01		2,211.00
260 Workers' Compensation	55,464.92	58,075.08		113,540.00
270 Group Insurance – Self-Insurance	1,828,104.80	1,881,255.71		3,709,360.51
280 Other Post-Employment Benefits (OPEB)	43,289.06	1,835.94		45,125.00
Total Personnel Services – Employee Benefits	\$4,923,805.46	\$5,321,172.06		\$10,244,977.52
300 Purchased Professional and Technical Services				
322 Professional Educational Services – Ius	39,537.47	248,895.84	128,055.42	416,488.73
329 Professional Educational Services – Other	45,042.37	45,910.73		90,953.10
Total Purchased Professional and Technical Services	\$84,579.84	\$294,806.57	\$128,055.42	\$507,441.83
500 Other Purchased Services				
562 Tuition To Pennsylvania Charter Schools	199,009.38	742,330.71		941,340.09
563 Tuition To Nonpublic Schools	23,850.00	830,951.02		854,801.02
567 Tuition To Approved Private Schools (APS) and PA Chartered Schools for the Deaf and Blind	9,885.00			9,885.00
580 Travel	163.16	75.73		238.89
Total Other Purchased Services	\$232,907.54	\$1,573,357.46		\$1,806,265.00
600 Supplies				
610 General Supplies	11,227.40	11,275.85		22,503.25
640 Books and Periodicals	3,026.38	2,617.68		5,644.06
650 Supplies & Fees – Technology Related	14,609.04	14,732.75		29,341.79
Total Supplies	\$28,862.82	\$28,626.28		\$57,489.10
Total 1240 Academic Support	\$12,441,634.06	\$15,267,091.37	\$128,055.42	\$27,836,780.85

LEA : 123464502 Lower Merion SD

Printed 11/19/2024 9:37:55 AM

Page - 11 of 25

General Fund (10)

1241 Learning Support – Public

	<u>Elementary</u>	<u>Secondary</u>	<u>Federal</u>	<u>Total</u>
100 Personnel Services – Salaries				
100 Personnel Services – Salaries	6,013,534.78	6,534,462.71		12,547,997.49
Total Personnel Services – Salaries	\$6,013,534.78	\$6,534,462.71		\$12,547,997.49
200 Personnel Services – Employee Benefits				
210 Group Insurance – Contracted Provider	37,080.98	37,559.02		74,640.00
220 Social Security Contributions	452,711.39	488,316.39		941,027.78
230 PSERS Retirement Contributions	2,021,468.93	2,219,383.03		4,240,851.96
250 Unemployment Compensation	972.37	974.63		1,947.00
260 Workers' Compensation	49,664.89	50,299.11		99,964.00
270 Group Insurance – Self-Insurance	1,638,511.10	1,618,432.21		3,256,943.31
280 Other Post-Employment Benefits (OPEB)	38,439.06	1,835.94		40,275.00
Total Personnel Services – Employee Benefits	\$4,238,848.72	\$4,416,800.33		\$8,655,649.05
300 Purchased Professional and Technical Services				
322 Professional Educational Services – Ius	39,537.47	248,895.84	128,055.42	416,488.73
329 Professional Educational Services – Other	43,526.13	42,434.73		85,960.86
Total Purchased Professional and Technical Services	\$83,063.60	\$291,330.57	\$128,055.42	\$502,449.59
500 Other Purchased Services				
562 Tuition To Pennsylvania Charter Schools	199,009.38	742,330.71		941,340.09
563 Tuition To Nonpublic Schools	23,850.00	830,951.02		854,801.02
567 Tuition To Approved Private Schools (APS) and PA Chartered Schools for the Deaf and Blind	9,885.00			9,885.00
Total Other Purchased Services	\$232,744.38	\$1,573,281.73		\$1,806,026.11
600 Supplies				
610 General Supplies	10,657.10	10,582.06		21,239.16
640 Books and Periodicals	848.21	2,259.34		3,107.55
650 Supplies & Fees – Technology Related	12,410.03	8,831.95		21,241.98
Total Supplies	\$23,915.34	\$21,673.35		\$45,588.69
Total 1241 Learning Support – Public	\$10,592,106.82	\$12,837,548.69	\$128,055.42	\$23,557,710.93

LEA : 123464502 Lower Merion SD

Printed 11/19/2024 9:37:55 AM

Page - 12 of 25

General Fund (10)

1243 Gifted Support

	<u>Elementary</u>	<u>Secondary</u>	<u>Federal</u>	<u>Total</u>
100 Personnel Services – Salaries				
100 Personnel Services – Salaries	1,157,943.62	1,514,666.29		2,672,609.91
Total Personnel Services – Salaries	\$1,157,943.62	\$1,514,666.29		\$2,672,609.91
200 Personnel Services – Employee Benefits				
210 Group Insurance – Contracted Provider	4,331.50	5,807.50		10,139.00
220 Social Security Contributions	86,966.38	113,881.17		200,847.55
230 PSERS Retirement Contributions	393,302.51	513,932.21		907,234.72
250 Unemployment Compensation	112.62	151.38		264.00
260 Workers' Compensation	5,800.03	7,775.97		13,576.00
270 Group Insurance – Self-Insurance	189,593.70	262,823.50		452,417.20
280 Other Post-Employment Benefits (OPEB)	4,850.00			4,850.00
Total Personnel Services – Employee Benefits	\$684,956.74	\$904,371.73		\$1,589,328.47
300 Purchased Professional and Technical Services				
329 Professional Educational Services – Other	1,516.24	3,476.00		4,992.24
Total Purchased Professional and Technical Services	\$1,516.24	\$3,476.00		\$4,992.24
500 Other Purchased Services				
580 Travel	163.16	75.73		238.89
Total Other Purchased Services	\$163.16	\$75.73		\$238.89
600 Supplies				
610 General Supplies	570.30	693.79		1,264.09
640 Books and Periodicals	2,178.17	358.34		2,536.51
650 Supplies & Fees – Technology Related	2,199.01	5,900.80		8,099.81
Total Supplies	\$4,947.48	\$6,952.93		\$11,900.41
Total 1243 Gifted Support	\$1,849,527.24	\$2,429,542.68		\$4,279,069.92

LEA : 123464502 Lower Merion SD

Printed 11/19/2024 9:37:55 AM

General Fund (10)

1260 Physical Support

	<u>Elementary</u>	<u>Secondary</u>	<u>Federal</u>	<u>Total</u>
300 <u>Purchased Professional and Technical Services</u>				
322 Professional Educational Services – lus	662.60	3,263.74	19,496.78	23,423.12
330 Other Professional Services	37,187.98	37,187.98	184,599.21	258,975.17
Total Purchased Professional and Technical Services	\$37,850.58	\$40,451.72	\$204,095.99	\$282,398.29
600 <u>Supplies</u>				
610 General Supplies	2,186.08	5,419.80		7,605.88
Total Supplies	\$2,186.08	\$5,419.80		\$7,605.88
Total 1260 Physical Support	\$40,036.66	\$45,871.52	\$204,095.99	\$290,004.17

LEA : 123464502 Lower Merion SD

Printed 11/19/2024 9:37:55 AM

General Fund (10)

1270 Multi-Handicapped Support	<u>Elementary</u>	<u>Secondary</u>	<u>Federal</u>	<u>Total</u>
300 <u>Purchased Professional and Technical Services</u>				
322 Professional Educational Services – Ius		23,646.96	26,716.07	50,363.03
Total Purchased Professional and Technical Services		\$23,646.96	\$26,716.07	\$50,363.03
500 <u>Other Purchased Services</u>				
567 Tuition To Approved Private Schools (APS) and PA Chartered Schools for the Deaf and Blind	229,855.29	265,178.99		495,034.28
Total Other Purchased Services	\$229,855.29	\$265,178.99		\$495,034.28
Total 1270 Multi-Handicapped Support	\$229,855.29	\$288,825.95	\$26,716.07	\$545,397.31

LEA : 123464502 Lower Merion SD

Printed 11/19/2024 9:37:55 AM

Page - 15 of 25

General Fund (10)

1290 Special Programs - Other Support

	<u>Elementary</u>	<u>Secondary</u>	<u>Federal</u>	<u>Total</u>
300 <u>Purchased Professional and Technical Services</u>				
322 Professional Educational Services – Ius	7,770.42	19,930.80	18,508.50	46,209.72
330 Other Professional Services	61,043.27	61,043.26	609,846.91	731,933.44
Total Purchased Professional and Technical Services	\$68,813.69	\$80,974.06	\$628,355.41	\$778,143.16
500 <u>Other Purchased Services</u>				
567 Tuition To Approved Private Schools (APS) and PA Chartered Schools for the Deaf and Blind	81,050.22	539,958.70		621,008.92
594 IU Payment By Withholding for Institutionalized Children's Programs – Special Classes		1,497.24		1,497.24
Total Other Purchased Services	\$81,050.22	\$541,455.94		\$622,506.16
600 <u>Supplies</u>				
610 General Supplies	4,370.28	1,716.22		6,086.50
650 Supplies & Fees – Technology Related	1,186.66	147.75		1,334.41
Total Supplies	\$5,556.94	\$1,863.97		\$7,420.91
Total 1290 Special Programs - Other Support	\$155,420.85	\$624,293.97	\$628,355.41	\$1,408,070.23

LEA : 123464502 Lower Merion SD

Printed 11/19/2024 9:37:55 AM

General Fund (10)

1300 Vocational Education

500 Other Purchased Services

	<u>Elementary</u>	<u>Secondary</u>	<u>Federal</u>	<u>Total</u>
564 Tuition To Career and Technology Centers		943,208.38		943,208.38
Total Other Purchased Services		\$943,208.38		\$943,208.38
Total 1300 Vocational Education		\$943,208.38		\$943,208.38

LEA : 123464502 Lower Merion SD

Printed 11/19/2024 9:37:55 AM

Page - 17 of 25

General Fund (10)

1400 Other Instructional Programs – Elementary / Secondary

	<u>Elementary</u>	<u>Secondary</u>	<u>Federal</u>	<u>Total</u>
100 Personnel Services – Salaries				
100 Personnel Services – Salaries	281,710.04	55,734.74	327,540.57	664,985.35
Total Personnel Services – Salaries	\$281,710.04	\$55,734.74	\$327,540.57	\$664,985.35
200 Personnel Services – Employee Benefits				
220 Social Security Contributions	33,969.84	16,203.65	1,150.81	51,324.30
230 PSERS Retirement Contributions	141,255.53	71,661.48	15,699.10	228,616.11
Total Personnel Services – Employee Benefits	\$175,225.37	\$87,865.13	\$16,849.91	\$279,940.41
300 Purchased Professional and Technical Services				
322 Professional Educational Services – lus		1,120.00		1,120.00
323 Professional Educational Services – Other Educational Agencies		19,894.07		19,894.07
329 Professional Educational Services – Other		12,000.00		12,000.00
Total Purchased Professional and Technical Services		\$33,014.07		\$33,014.07
500 Other Purchased Services				
561 Tuition To Other School Districts Within the State		6,923.44		6,923.44
568 Tuition To Private Residential Rehabilitative Institutions (PRRI) [In-State] and Detention Centers		20,463.00		20,463.00
569 Tuition – Other		4,800.00		4,800.00
580 Travel		10,698.00		10,698.00
Total Other Purchased Services		\$42,884.44		\$42,884.44
600 Supplies				
610 General Supplies	25,528.44	12,947.49	2,290.46	40,766.39
630 Food	10,004.81	2,546.72		12,551.53
640 Books and Periodicals	141.76	1,705.95		1,847.71
650 Supplies & Fees – Technology Related	1,499.00	31,975.00		33,474.00
Total Supplies	\$37,174.01	\$49,175.16	\$2,290.46	\$88,639.63
800 Other Objects				
810 Dues and Fees		7,475.00		7,475.00
Total Other Objects		\$7,475.00		\$7,475.00
Total 1400 Other Instructional Programs – Elementary / Secondary	\$494,109.42	\$276,148.54	\$346,680.94	\$1,116,938.90

LEA : 123464502 Lower Merion SD

Printed 11/19/2024 9:37:55 AM

Page - 18 of 25

General Fund (10)

	<u>Elementary</u>	<u>Secondary</u>	<u>Federal</u>	<u>Total</u>
1420 Summer School				
100 Personnel Services – Salaries				
100 Personnel Services – Salaries	195,597.95	35,319.61	327,518.68	558,436.24
Total Personnel Services – Salaries	\$195,597.95	\$35,319.61	\$327,518.68	\$558,436.24
200 Personnel Services – Employee Benefits				
220 Social Security Contributions	27,553.12	14,678.90	1,149.13	43,381.15
230 PSERS Retirement Contributions	112,214.26	64,720.38	15,691.66	192,626.30
Total Personnel Services – Employee Benefits	\$139,767.38	\$79,399.28	\$16,840.79	\$236,007.45
300 Purchased Professional and Technical Services				
323 Professional Educational Services – Other Educational Agencies		399.00		399.00
Total Purchased Professional and Technical Services		\$399.00		\$399.00
600 Supplies				
610 General Supplies	17,995.44	12,947.49	2,290.46	33,233.39
630 Food	501.98	1,543.25		2,045.23
640 Books and Periodicals	141.76	1,705.95		1,847.71
650 Supplies & Fees – Technology Related	1,499.00	14,000.00		15,499.00
Total Supplies	\$20,138.18	\$30,196.69	\$2,290.46	\$52,625.33
Total 1420 Summer School	\$355,503.51	\$145,314.58	\$346,649.93	\$847,468.02

LEA : 123464502 Lower Merion SD

Printed 11/19/2024 9:37:55 AM

Page - 19 of 25

General Fund (10)

1430 Homebound Instruction

	<u>Elementary</u>	<u>Secondary</u>	<u>Federal</u>	<u>Total</u>
100 Personnel Services – Salaries				
100 Personnel Services – Salaries	410.40	6,562.32		6,972.72
Total Personnel Services – Salaries	\$410.40	\$6,562.32		\$6,972.72
200 Personnel Services – Employee Benefits				
220 Social Security Contributions	30.34	487.96		518.30
230 PSERS Retirement Contributions	139.54	2,231.14		2,370.68
Total Personnel Services – Employee Benefits	\$169.88	\$2,719.10		\$2,888.98
600 Supplies				
650 Supplies & Fees – Technology Related		17,975.00		17,975.00
Total Supplies		\$17,975.00		\$17,975.00
Total 1430 Homebound Instruction	\$580.28	\$27,256.42		\$27,836.70

General Fund (10)

1440 Alternative Regular Education Programs	Elementary	Secondary	Federal	Total
300 <u>Purchased Professional and Technical Services</u>				
322 Professional Educational Services – lus		1,120.00		1,120.00
323 Professional Educational Services – Other Educational Agencies		19,495.07		19,495.07
Total Purchased Professional and Technical Services		\$20,615.07		\$20,615.07
500 <u>Other Purchased Services</u>				
561 Tuition To Other School Districts Within the State		6,923.44		6,923.44
568 Tuition To Private Residential Rehabilitative Institutions (PRRI) [In-State] and Detention Centers		20,463.00		20,463.00
Total Other Purchased Services		\$27,386.44		\$27,386.44
Total 1440 Alternative Regular Education Programs		\$48,001.51		\$48,001.51

LEA : 123464502 Lower Merion SD

Printed 11/19/2024 9:37:55 AM

General Fund (10)

1441 Adjudicated / Court-Placed Programs

<u>Elementary</u>	<u>Secondary</u>	<u>Federal</u>	<u>Total</u>
-------------------	------------------	----------------	--------------

500 Other Purchased Services

561 Tuition To Other School Districts Within the State	6,923.44		6,923.44
568 Tuition To Private Residential Rehabilitative Institutions (PRRI) [In-State] and Detention Centers	20,463.00		20,463.00

Total Other Purchased Services	\$27,386.44		\$27,386.44
---------------------------------------	--------------------	--	--------------------

Total 1441 Adjudicated / Court-Placed Programs	\$27,386.44		\$27,386.44
---	--------------------	--	--------------------

LEA : 123464502 Lower Merion SD

Printed 11/19/2024 9:37:55 AM

General Fund (10)

1442 Alternative Education Programs	<u>Elementary</u>	<u>Secondary</u>	<u>Federal</u>	<u>Total</u>
300 <u>Purchased Professional and Technical Services</u>				
322 Professional Educational Services – lus		1,120.00		1,120.00
323 Professional Educational Services – Other Educational Agencies		19,495.07		19,495.07
Total Purchased Professional and Technical Services		\$20,615.07		\$20,615.07
Total 1442 Alternative Education Programs		\$20,615.07		\$20,615.07

LEA : 123464502 Lower Merion SD

Printed 11/19/2024 9:37:55 AM

Page - 23 of 25

General Fund (10)

1450 Instructional Programs Outside the Established School Day

	<u>Elementary</u>	<u>Secondary</u>	<u>Federal</u>	<u>Total</u>
100 Personnel Services – Salaries				
100 Personnel Services – Salaries	85,701.69	13,852.81	21.89	99,576.39
Total Personnel Services – Salaries	\$85,701.69	\$13,852.81	\$21.89	\$99,576.39
200 Personnel Services – Employee Benefits				
220 Social Security Contributions	6,386.38	1,036.79	1.68	7,424.85
230 PSERS Retirement Contributions	28,901.73	4,709.96	7.44	33,619.13
Total Personnel Services – Employee Benefits	\$35,288.11	\$5,746.75	\$9.12	\$41,043.98
300 Purchased Professional and Technical Services				
329 Professional Educational Services – Other		12,000.00		12,000.00
Total Purchased Professional and Technical Services		\$12,000.00		\$12,000.00
500 Other Purchased Services				
580 Travel		10,698.00		10,698.00
Total Other Purchased Services		\$10,698.00		\$10,698.00
600 Supplies				
610 General Supplies	7,533.00			7,533.00
630 Food	9,502.83	1,003.47		10,506.30
Total Supplies	\$17,035.83	\$1,003.47		\$18,039.30
800 Other Objects				
810 Dues and Fees		7,475.00		7,475.00
Total Other Objects		\$7,475.00		\$7,475.00
Total 1450 Instructional Programs Outside the Established School Day	\$138,025.63	\$50,776.03	\$31.01	\$188,832.67

General Fund (10)

1490 Additional Other Instructional Programs	<u>Elementary</u>	<u>Secondary</u>	<u>Federal</u>	<u>Total</u>
500 <u>Other Purchased Services</u>				
569 Tuition – Other		4,800.00		4,800.00
Total Other Purchased Services		\$4,800.00		\$4,800.00
Total 1490 Additional Other Instructional Programs		\$4,800.00		\$4,800.00

LEA : 123464502 Lower Merion SD

Printed 11/19/2024 9:37:55 AM

General Fund (10)

1500 Nonpublic School Programs	<u>Elementary</u>	<u>Secondary</u>	<u>Federal</u>	<u>Total</u>
300 <u>Purchased Professional and Technical Services</u>				
322 Professional Educational Services – lus			22,089.00	22,089.00
Total Purchased Professional and Technical Services			\$22,089.00	\$22,089.00
600 <u>Supplies</u>				
610 General Supplies			1,803.60	1,803.60
640 Books and Periodicals			311.96	311.96
Total Supplies			\$2,115.56	\$2,115.56
Total 1500 Nonpublic School Programs			\$24,204.56	\$24,204.56

LEA : 123464502 Lower Merion SD

Printed 11/19/2024 9:38:02 AM

Page - 1 of 70

General Fund (10)**2000 Support Services****Total****100 Personnel Services – Salaries**

100 Personnel Services – Salaries	44,046,234.06
-----------------------------------	---------------

Total Personnel Services – Salaries**\$44,046,234.06****200 Personnel Services – Employee Benefits**

210 Group Insurance – Contracted Provider	222,191.46
---	------------

220 Social Security Contributions	3,315,241.46
-----------------------------------	--------------

230 PSERS Retirement Contributions	14,915,953.26
------------------------------------	---------------

240 Tuition Reimbursement	299,056.01
---------------------------	------------

250 Unemployment Compensation	5,742.73
-------------------------------	----------

260 Workers' Compensation	298,122.70
---------------------------	------------

270 Group Insurance – Self-Insurance	9,663,674.10
--------------------------------------	--------------

280 Other Post-Employment Benefits (OPEB)	417,229.81
---	------------

299 All Other Employee Benefits	61,726.50
---------------------------------	-----------

Total Personnel Services – Employee Benefits**\$29,198,938.03****300 Purchased Professional and Technical Services**

322 Professional Educational Services – Ius	222,553.17
---	------------

329 Professional Educational Services – Other	38,881.64
---	-----------

330 Other Professional Services	2,230,590.77
---------------------------------	--------------

340 Technical Services	745,704.20
------------------------	------------

350 Security / Safety Services	685,608.16
--------------------------------	------------

360 Employee Training and Development Services	270,009.74
--	------------

390 Other Purchased Professional and Technical Services	9,647.08
---	----------

Total Purchased Professional and Technical Services**\$4,202,994.76****400 Purchased Property Services**

410 Cleaning Services	339,827.51
-----------------------	------------

420 Utility Services	329,999.09
----------------------	------------

430 Repairs and Maintenance Services	1,983,179.67
--------------------------------------	--------------

440 Rentals	122,710.03
-------------	------------

460 Extermination Services	12,230.00
----------------------------	-----------

Total Purchased Property Services**\$2,787,946.30****500 Other Purchased Services**

513 Contracted Carriers	4,181,734.44
-------------------------	--------------

516 Student Transportation Services From the IU	116,804.98
---	------------

520 Insurance – General	170,948.25
-------------------------	------------

521 Fire Insurance	504,222.00
--------------------	------------

522 Automotive Liability Insurance	283,652.00
------------------------------------	------------

523 General Property and Liability Insurance	479,717.00
--	------------

524 Other Pupil Transportation Insurance	45,000.00
--	-----------

529 Other Insurance	389,944.50
---------------------	------------

530 Communications	631,386.49
--------------------	------------

549 Other Advertising/Public Relations	50,615.63
--	-----------

550 Printing and Binding	43,422.91
--------------------------	-----------

580 Travel	25,808.11
------------	-----------

595 IU Payments By Withholding	141,347.79
--------------------------------	------------

LEA : 123464502 Lower Merion SD

Printed 11/19/2024 9:38:02 AM

General Fund (10)

2000 Support Services

Total

500 Other Purchased Services

596 Direct Payments To Intermediate Units	9,508.79
599 Other Miscellaneous Purchased Services	66,146.66

Total Other Purchased Services	\$7,140,259.55
---------------------------------------	-----------------------

600 Supplies

610 General Supplies	2,284,789.10
620 Energy	2,066,999.26
630 Food	33,931.20
640 Books and Periodicals	100,264.93
650 Supplies & Fees – Technology Related	3,093,149.44

Total Supplies	\$7,579,133.93
-----------------------	-----------------------

700 Property

752 Capital Equipment – Original and Additional	27,858.10
762 Capitalized Equipment - Replacement	44,662.74

Total Property	\$72,520.84
-----------------------	--------------------

800 Other Objects

810 Dues and Fees	69,733.40
820 Claims and Judgments Against the LEA	2,287.16
890 Miscellaneous Expenditures	5,146.13

Total Other Objects	\$77,166.69
----------------------------	--------------------

Total 2000 Support Services	\$95,105,194.16
------------------------------------	------------------------

LEA : 123464502 Lower Merion SD

Printed 11/19/2024 9:38:02 AM

Page - 3 of 70

General Fund (10)

2100 Support Services – Students

100 Personnel Services – Salaries

	<u>Elementary</u>	<u>Secondary</u>	<u>Federal</u>	<u>Total</u>
100 Personnel Services – Salaries	2,229,581.52	3,655,492.18	44,720.30	6,702,892.03
Total Personnel Services – Salaries	\$2,229,581.52	\$3,655,492.18	\$44,720.30	\$6,702,892.03

200 Personnel Services – Employee Benefits

210 Group Insurance – Contracted Provider	8,221.66	14,246.34		24,605.00
220 Social Security Contributions	168,473.23	271,998.86	730.92	501,250.40
230 PSERS Retirement Contributions	766,046.82	1,238,575.90	3,248.55	2,275,652.57
250 Unemployment Compensation	214.69	374.31		645.00
260 Workers' Compensation	11,012.08	19,078.92		32,952.00
270 Group Insurance – Self-Insurance	358,258.04	610,173.44		1,078,711.08
280 Other Post-Employment Benefits (OPEB)	28,508.00	41,342.00		69,850.00
Total Personnel Services – Employee Benefits	\$1,340,734.52	\$2,195,789.77	\$3,979.47	\$3,983,666.05

300 Purchased Professional and Technical Services

322 Professional Educational Services – Ius	73,189.04	84,983.66		158,172.70
330 Other Professional Services	9,050.00	30,160.60	5,000.00	44,210.60
390 Other Purchased Professional and Technical Services	323.54	323.54		647.08
Total Purchased Professional and Technical Services	\$82,562.58	\$115,467.80	\$5,000.00	\$203,030.38

400 Purchased Property Services

430 Repairs and Maintenance Services		859.76		859.76
440 Rentals		4,940.00		4,940.00
Total Purchased Property Services		\$5,799.76		\$5,799.76

500 Other Purchased Services

530 Communications		4,477.61		4,477.61
550 Printing and Binding	1,335.81			1,335.81
580 Travel	1,295.60	773.83		2,069.43
599 Other Miscellaneous Purchased Services	12,365.51	53,781.15		66,146.66
Total Other Purchased Services	\$14,996.92	\$59,032.59		\$74,029.51

600 Supplies

610 General Supplies	18,857.22	7,483.27		26,340.49
630 Food	103.97	918.47		1,022.44
640 Books and Periodicals	2,238.47	1,395.84		3,634.31
650 Supplies & Fees – Technology Related	70,012.16	31,655.14		101,667.30
Total Supplies	\$91,211.82	\$41,452.72		\$132,664.54

800 Other Objects

810 Dues and Fees	1,400.49	1,672.19		3,072.68
Total Other Objects	\$1,400.49	\$1,672.19		\$3,072.68
Total 2100 Support Services – Students	\$3,760,487.85	\$6,074,707.01	\$53,699.77	\$11,105,154.95

LEA : 123464502 Lower Merion SD

Printed 11/19/2024 9:38:02 AM

Page - 4 of 70

General Fund (10)

	<u>Elementary</u>	<u>Secondary</u>	<u>Federal</u>	<u>Total</u>
2110 Supervision of Student Services				
100 Personnel Services – Salaries				
100 Personnel Services – Salaries	497,050.83	553,081.98		1,050,132.81
Total Personnel Services – Salaries	\$497,050.83	\$553,081.98		\$1,050,132.81
200 Personnel Services – Employee Benefits				
210 Group Insurance – Contracted Provider	1,642.00	2,002.00		3,644.00
220 Social Security Contributions	35,766.52	39,899.17		75,665.69
230 PSERS Retirement Contributions	165,026.60	184,685.59		349,712.19
250 Unemployment Compensation	44.00	54.00		98.00
260 Workers' Compensation	2,200.00	2,683.00		4,883.00
270 Group Insurance – Self-Insurance	71,495.34	84,469.74		155,965.08
280 Other Post-Employment Benefits (OPEB)	16,050.00	16,050.00		32,100.00
Total Personnel Services – Employee Benefits	\$292,224.46	\$329,843.50		\$622,067.96
300 Purchased Professional and Technical Services				
330 Other Professional Services	3,450.00	3,450.00	5,000.00	11,900.00
390 Other Purchased Professional and Technical Services	323.54	323.54		647.08
Total Purchased Professional and Technical Services	\$3,773.54	\$3,773.54	\$5,000.00	\$12,547.08
400 Purchased Property Services				
430 Repairs and Maintenance Services		859.76		859.76
Total Purchased Property Services		\$859.76		\$859.76
500 Other Purchased Services				
530 Communications		4,328.00		4,328.00
550 Printing and Binding	1,335.81			1,335.81
580 Travel	887.95	466.98		1,354.93
Total Other Purchased Services	\$2,223.76	\$4,794.98		\$7,018.74
600 Supplies				
610 General Supplies	3,684.55	1,695.84		5,380.39
630 Food	103.97	145.97		249.94
640 Books and Periodicals	633.23	829.56		1,462.79
650 Supplies & Fees – Technology Related	43,621.08	3,687.40		47,308.48
Total Supplies	\$48,042.83	\$6,358.77		\$54,401.60
800 Other Objects				
810 Dues and Fees	1,179.49	1,205.79		2,385.28
Total Other Objects	\$1,179.49	\$1,205.79		\$2,385.28
Total 2110 Supervision of Student Services	\$844,494.91	\$899,918.32	\$5,000.00	\$1,749,413.23

LEA : 123464502 Lower Merion SD

Printed 11/19/2024 9:38:02 AM

Page - 5 of 70

General Fund (10)

2111 Supervision of Student Services – Head of Component

	<u>Elementary</u>	<u>Secondary</u>	<u>Federal</u>	<u>Total</u>
100 Personnel Services – Salaries				
100 Personnel Services – Salaries	219,269.51	219,269.51		438,539.02
Total Personnel Services – Salaries	\$219,269.51	\$219,269.51		\$438,539.02
200 Personnel Services – Employee Benefits				
210 Group Insurance – Contracted Provider	595.00	595.00		1,190.00
220 Social Security Contributions	14,957.32	14,956.75		29,914.07
230 PSERS Retirement Contributions	74,551.71	74,551.28		149,102.99
250 Unemployment Compensation	16.00	16.00		32.00
260 Workers' Compensation	798.00	798.00		1,596.00
270 Group Insurance – Self-Insurance	26,018.74	26,018.74		52,037.48
Total Personnel Services – Employee Benefits	\$116,936.77	\$116,935.77		\$233,872.54
300 Purchased Professional and Technical Services				
330 Other Professional Services			5,000.00	5,000.00
Total Purchased Professional and Technical Services			\$5,000.00	\$5,000.00
500 Other Purchased Services				
580 Travel	113.29	110.94		224.23
Total Other Purchased Services	\$113.29	\$110.94		\$224.23
600 Supplies				
610 General Supplies	21.98			21.98
630 Food		4.00		4.00
640 Books and Periodicals	90.32	113.81		204.13
650 Supplies & Fees – Technology Related	103.12			103.12
Total Supplies	\$215.42	\$117.81		\$333.23
800 Other Objects				
810 Dues and Fees	706.55	706.55		1,413.10
Total Other Objects	\$706.55	\$706.55		\$1,413.10
Total 2111 Supervision of Student Services – Head of Component	\$337,241.54	\$337,140.58	\$5,000.00	\$679,382.12

LEA : 123464502 Lower Merion SD

Printed 11/19/2024 9:38:02 AM

Page - 6 of 70

General Fund (10)

2119 Supervision of Student Services – All Other Supervision

	<u>Elementary</u>	<u>Secondary</u>	<u>Federal</u>	<u>Total</u>
100 Personnel Services – Salaries				
100 Personnel Services – Salaries	277,781.32	333,812.47		611,593.79
Total Personnel Services – Salaries	\$277,781.32	\$333,812.47		\$611,593.79
200 Personnel Services – Employee Benefits				
210 Group Insurance – Contracted Provider	1,047.00	1,407.00		2,454.00
220 Social Security Contributions	20,809.20	24,942.42		45,751.62
230 PSERS Retirement Contributions	90,474.89	110,134.31		200,609.20
250 Unemployment Compensation	28.00	38.00		66.00
260 Workers' Compensation	1,402.00	1,885.00		3,287.00
270 Group Insurance – Self-Insurance	45,476.60	58,451.00		103,927.60
280 Other Post-Employment Benefits (OPEB)	16,050.00	16,050.00		32,100.00
Total Personnel Services – Employee Benefits	\$175,287.69	\$212,907.73		\$388,195.42
300 Purchased Professional and Technical Services				
330 Other Professional Services	3,450.00	3,450.00		6,900.00
390 Other Purchased Professional and Technical Services	323.54	323.54		647.08
Total Purchased Professional and Technical Services	\$3,773.54	\$3,773.54		\$7,547.08
400 Purchased Property Services				
430 Repairs and Maintenance Services		859.76		859.76
Total Purchased Property Services		\$859.76		\$859.76
500 Other Purchased Services				
530 Communications		4,328.00		4,328.00
550 Printing and Binding	1,335.81			1,335.81
580 Travel	774.66	356.04		1,130.70
Total Other Purchased Services	\$2,110.47	\$4,684.04		\$6,794.51
600 Supplies				
610 General Supplies	3,662.57	1,695.84		5,358.41
630 Food	103.97	141.97		245.94
640 Books and Periodicals	542.91	715.75		1,258.66
650 Supplies & Fees – Technology Related	43,517.96	3,687.40		47,205.36
Total Supplies	\$47,827.41	\$6,240.96		\$54,068.37
800 Other Objects				
810 Dues and Fees	472.94	499.24		972.18
Total Other Objects	\$472.94	\$499.24		\$972.18
Total 2119 Supervision of Student Services – All Other Supervision	\$507,253.37	\$562,777.74		\$1,070,031.11

LEA : 123464502 Lower Merion SD

Printed 11/19/2024 9:38:02 AM

Page - 7 of 70

General Fund (10)

2120 Guidance Services

	<u>Elementary</u>	<u>Secondary</u>	<u>Federal</u>	<u>Total</u>
100 Personnel Services – Salaries				
100 Personnel Services – Salaries	1,202,445.05	2,091,824.47	44,720.30	3,338,989.82
Total Personnel Services – Salaries	\$1,202,445.05	\$2,091,824.47	\$44,720.30	\$3,338,989.82
200 Personnel Services – Employee Benefits				
210 Group Insurance – Contracted Provider	4,544.66	8,107.34		12,652.00
220 Social Security Contributions	92,900.84	156,250.05	730.92	249,881.81
230 PSERS Retirement Contributions	420,790.98	710,290.86	3,248.55	1,134,330.39
250 Unemployment Compensation	117.69	211.31		329.00
260 Workers' Compensation	6,085.08	10,856.92		16,942.00
270 Group Insurance – Self-Insurance	200,032.54	349,621.58		549,654.12
Total Personnel Services – Employee Benefits	\$724,471.79	\$1,235,338.06	\$3,979.47	\$1,963,789.32
300 Purchased Professional and Technical Services				
330 Other Professional Services		21,110.60		21,110.60
Total Purchased Professional and Technical Services		\$21,110.60		\$21,110.60
400 Purchased Property Services				
440 Rentals		4,940.00		4,940.00
Total Purchased Property Services		\$4,940.00		\$4,940.00
500 Other Purchased Services				
530 Communications		149.61		149.61
Total Other Purchased Services		\$149.61		\$149.61
600 Supplies				
610 General Supplies	9,994.04	517.34		10,511.38
630 Food		772.50		772.50
640 Books and Periodicals	1,605.24	566.28		2,171.52
650 Supplies & Fees – Technology Related	15,058.18	16,803.84		31,862.02
Total Supplies	\$26,657.46	\$18,659.96		\$45,317.42
800 Other Objects				
810 Dues and Fees	221.00	466.40		687.40
Total Other Objects	\$221.00	\$466.40		\$687.40
Total 2120 Guidance Services	\$1,953,795.30	\$3,372,489.10	\$48,699.77	\$5,374,984.17

LEA : 123464502 Lower Merion SD

Printed 11/19/2024 9:38:02 AM

Page - 8 of 70

General Fund (10)**2130 Attendance Services**ElementarySecondaryFederalTotal**100 Personnel Services – Salaries**

100 Personnel Services – Salaries

773,098.03

Total Personnel Services – Salaries**\$773,098.03****200 Personnel Services – Employee Benefits**

210 Group Insurance – Contracted Provider

2,137.00

220 Social Security Contributions

60,047.39

230 PSERS Retirement Contributions

267,781.30

250 Unemployment Compensation

56.00

260 Workers' Compensation

2,861.00

270 Group Insurance – Self-Insurance

110,279.60

Total Personnel Services – Employee Benefits**\$443,162.29****Total 2130 Attendance Services****\$1,216,260.32**

LEA : 123464502 Lower Merion SD

Printed 11/19/2024 9:38:02 AM

Page - 9 of 70

General Fund (10)

2140 Psychological Services

	<u>Elementary</u>	<u>Secondary</u>	<u>Federal</u>	<u>Total</u>
100 Personnel Services – Salaries				
100 Personnel Services – Salaries	530,085.64	1,010,585.73		1,540,671.37
Total Personnel Services – Salaries	\$530,085.64	\$1,010,585.73		\$1,540,671.37
200 Personnel Services – Employee Benefits				
210 Group Insurance – Contracted Provider	2,035.00	4,137.00		6,172.00
220 Social Security Contributions	39,805.87	75,849.64		115,655.51
230 PSERS Retirement Contributions	180,229.24	343,599.45		523,828.69
250 Unemployment Compensation	53.00	109.00		162.00
260 Workers' Compensation	2,727.00	5,539.00		8,266.00
270 Group Insurance – Self-Insurance	86,730.16	176,082.12		262,812.28
280 Other Post-Employment Benefits (OPEB)	12,458.00	25,292.00		37,750.00
Total Personnel Services – Employee Benefits	\$324,038.27	\$630,608.21		\$954,646.48
300 Purchased Professional and Technical Services				
322 Professional Educational Services – Ius	73,189.04	84,983.66		158,172.70
330 Other Professional Services	5,600.00	5,600.00		11,200.00
Total Purchased Professional and Technical Services	\$78,789.04	\$90,583.66		\$169,372.70
500 Other Purchased Services				
580 Travel	407.65	306.85		714.50
599 Other Miscellaneous Purchased Services	12,365.51	53,781.15		66,146.66
Total Other Purchased Services	\$12,773.16	\$54,088.00		\$66,861.16
600 Supplies				
610 General Supplies	5,178.63	5,270.09		10,448.72
650 Supplies & Fees – Technology Related	11,332.90	11,163.90		22,496.80
Total Supplies	\$16,511.53	\$16,433.99		\$32,945.52
Total 2140 Psychological Services	\$962,197.64	\$1,802,299.59		\$2,764,497.23

LEA : 123464502 Lower Merion SD

Printed 11/19/2024 9:38:02 AM

Page - 10 of 70

General Fund (10)

2200 Support Services – Instructional Staff

	<u>Elementary</u>	<u>Secondary</u>	<u>Federal</u>	<u>Total</u>
100 Personnel Services – Salaries				
100 Personnel Services – Salaries	2,424,488.01	1,574,145.17		3,998,633.18
Total Personnel Services – Salaries	\$2,424,488.01	\$1,574,145.17		\$3,998,633.18
200 Personnel Services – Employee Benefits				
210 Group Insurance – Contracted Provider	9,915.99	5,057.01		14,973.00
220 Social Security Contributions	181,758.21	118,334.32		300,092.53
230 PSERS Retirement Contributions	809,197.32	534,085.28		1,343,282.60
240 Tuition Reimbursement	137,233.29	119,639.95		256,873.24
250 Unemployment Compensation	260.13	132.87		393.00
260 Workers' Compensation	13,280.67	6,778.33		20,059.00
270 Group Insurance – Self-Insurance	443,620.15	230,903.09		674,523.24
280 Other Post-Employment Benefits (OPEB)	79,075.39			79,075.39
Total Personnel Services – Employee Benefits	\$1,674,341.15	\$1,014,930.85		\$2,689,272.00
300 Purchased Professional and Technical Services				
322 Professional Educational Services – Ius	1,462.50	2,862.50	60,055.47	64,380.47
329 Professional Educational Services – Other	7,840.92	3,271.58		11,112.50
330 Other Professional Services	46,327.32	25,548.27	29,075.00	100,950.59
360 Employee Training and Development Services	30,383.19	69,489.22	27,205.50	127,077.91
Total Purchased Professional and Technical Services	\$86,013.93	\$101,171.57	\$116,335.97	\$303,521.47
400 Purchased Property Services				
430 Repairs and Maintenance Services		3,862.16		3,862.16
Total Purchased Property Services		\$3,862.16		\$3,862.16
500 Other Purchased Services				
530 Communications		836.55	1,725.00	2,561.55
580 Travel	13.74	3,512.43		3,526.17
Total Other Purchased Services	\$13.74	\$4,348.98	\$1,725.00	\$6,087.72
600 Supplies				
610 General Supplies	11,866.26	12,197.03	417.64	24,480.93
630 Food	4,152.53	9,504.54		13,657.07
640 Books and Periodicals	31,854.99	47,746.88	4,941.80	84,543.67
650 Supplies & Fees – Technology Related	111,500.32	236,438.46		347,938.78
Total Supplies	\$159,374.10	\$305,886.91	\$5,359.44	\$470,620.45
800 Other Objects				
810 Dues and Fees	6,945.01	12,287.01		19,232.02
Total Other Objects	\$6,945.01	\$12,287.01		\$19,232.02
Total 2200 Support Services – Instructional Staff	\$4,351,175.94	\$3,016,632.65	\$123,420.41	\$7,491,229.00

LEA : 123464502 Lower Merion SD

Printed 11/19/2024 9:38:02 AM

General Fund (10)

2220 Technology Support Services	<u>Elementary</u>	<u>Secondary</u>	<u>Federal</u>	<u>Total</u>
600 <u>Supplies</u>				
610 General Supplies	10.93			10.93
Total Supplies	\$10.93			\$10.93
Total 2220 Technology Support Services	\$10.93			\$10.93

LEA : 123464502 Lower Merion SD

Printed 11/19/2024 9:38:02 AM

Page - 12 of 70

General Fund (10)

2250 School Library Services

	<u>Elementary</u>	<u>Secondary</u>	<u>Federal</u>	<u>Total</u>
100 Personnel Services – Salaries				
100 Personnel Services – Salaries	1,185,641.59	639,089.48		1,824,731.07
Total Personnel Services – Salaries	\$1,185,641.59	\$639,089.48		\$1,824,731.07
200 Personnel Services – Employee Benefits				
210 Group Insurance – Contracted Provider	5,505.99	3,204.01		8,710.00
220 Social Security Contributions	90,551.71	47,226.28		137,777.99
230 PSERS Retirement Contributions	401,605.14	217,076.18		618,681.32
250 Unemployment Compensation	144.13	84.87		229.00
260 Workers' Compensation	7,375.67	4,295.33		11,671.00
270 Group Insurance – Self-Insurance	254,521.54	139,647.86		394,169.40
Total Personnel Services – Employee Benefits	\$759,704.18	\$411,534.53		\$1,171,238.71
300 Purchased Professional and Technical Services				
329 Professional Educational Services – Other	7,840.92	2,484.08		10,325.00
330 Other Professional Services	495.98	7,833.33		8,329.31
Total Purchased Professional and Technical Services	\$8,336.90	\$10,317.41		\$18,654.31
600 Supplies				
610 General Supplies	4,883.27	7,207.41		12,090.68
630 Food		230.00		230.00
640 Books and Periodicals	28,066.61	46,222.69		74,289.30
650 Supplies & Fees – Technology Related	55,150.42	144,822.93		199,973.35
Total Supplies	\$88,100.30	\$198,483.03		\$286,583.33
800 Other Objects				
810 Dues and Fees		617.00		617.00
Total Other Objects		\$617.00		\$617.00
Total 2250 School Library Services	\$2,041,782.97	\$1,260,041.45		\$3,301,824.42

LEA : 123464502 Lower Merion SD

Printed 11/19/2024 9:38:02 AM

Page - 13 of 70

General Fund (10)

2260 Instruction and Curriculum Development Services

	<u>Elementary</u>	<u>Secondary</u>	<u>Federal</u>	<u>Total</u>
100 Personnel Services – Salaries				
100 Personnel Services – Salaries	1,146,475.70	850,148.94		1,996,624.64
Total Personnel Services – Salaries	\$1,146,475.70	\$850,148.94		\$1,996,624.64
200 Personnel Services – Employee Benefits				
210 Group Insurance – Contracted Provider	4,410.00	1,853.00		6,263.00
220 Social Security Contributions	84,235.91	64,475.95		148,711.86
230 PSERS Retirement Contributions	375,827.31	288,104.86		663,932.17
250 Unemployment Compensation	116.00	48.00		164.00
260 Workers' Compensation	5,905.00	2,483.00		8,388.00
270 Group Insurance – Self-Insurance	189,098.61	91,255.23		280,353.84
280 Other Post-Employment Benefits (OPEB)	79,075.39			79,075.39
Total Personnel Services – Employee Benefits	\$738,668.22	\$448,220.04		\$1,186,888.26
300 Purchased Professional and Technical Services				
329 Professional Educational Services – Other		787.50		787.50
330 Other Professional Services	8,331.34	9,352.44	17,475.00	35,158.78
Total Purchased Professional and Technical Services	\$8,331.34	\$10,139.94	\$17,475.00	\$35,946.28
400 Purchased Property Services				
430 Repairs and Maintenance Services		3,862.16		3,862.16
Total Purchased Property Services		\$3,862.16		\$3,862.16
500 Other Purchased Services				
530 Communications		836.55	1,725.00	2,561.55
580 Travel	13.74	206.22		219.96
Total Other Purchased Services	\$13.74	\$1,042.77	\$1,725.00	\$2,781.51
600 Supplies				
610 General Supplies	6,893.47	3,845.01	417.64	11,156.12
630 Food	3,816.52	2,937.22		6,753.74
640 Books and Periodicals	1,110.85	527.17	4,941.80	6,579.82
650 Supplies & Fees – Technology Related	56,349.90	91,615.53		147,965.43
Total Supplies	\$68,170.74	\$98,924.93	\$5,359.44	\$172,455.11
800 Other Objects				
810 Dues and Fees	131.89	2,548.89		2,680.78
Total Other Objects	\$131.89	\$2,548.89		\$2,680.78
Total 2260 Instruction and Curriculum Development Services	\$1,961,791.63	\$1,414,887.67	\$24,559.44	\$3,401,238.74

LEA : 123464502 Lower Merion SD

Printed 11/19/2024 9:38:02 AM

General Fund (10)				
2270 Instructional Staff Professional Development Services	<u>Elementary</u>	<u>Secondary</u>	<u>Federal</u>	<u>Total</u>
100 <u>Personnel Services – Salaries</u>				
100 Personnel Services – Salaries	92,370.72	84,906.75		177,277.47
Total Personnel Services – Salaries	\$92,370.72	\$84,906.75		\$177,277.47
200 <u>Personnel Services – Employee Benefits</u>				
220 Social Security Contributions	6,970.59	6,632.09		13,602.68
230 PSERS Retirement Contributions	31,764.87	28,904.24		60,669.11
240 Tuition Reimbursement	137,233.29	119,639.95		256,873.24
Total Personnel Services – Employee Benefits	\$175,968.75	\$155,176.28		\$331,145.03
300 <u>Purchased Professional and Technical Services</u>				
322 Professional Educational Services – Ius	1,462.50	2,862.50		4,325.00
330 Other Professional Services	37,500.00	8,362.50	11,600.00	57,462.50
360 Employee Training and Development Services	30,383.19	69,489.22	27,205.50	127,077.91
Total Purchased Professional and Technical Services	\$69,345.69	\$80,714.22	\$38,805.50	\$188,865.41
500 <u>Other Purchased Services</u>				
580 Travel		3,306.21		3,306.21
Total Other Purchased Services		\$3,306.21		\$3,306.21
600 <u>Supplies</u>				
610 General Supplies	78.59	1,144.61		1,223.20
630 Food	336.01	6,337.32		6,673.33
640 Books and Periodicals	2,677.53	997.02		3,674.55
Total Supplies	\$3,092.13	\$8,478.95		\$11,571.08
800 <u>Other Objects</u>				
810 Dues and Fees	6,813.12	9,121.12		15,934.24
Total Other Objects	\$6,813.12	\$9,121.12		\$15,934.24
Total 2270 Instructional Staff Professional Development Services	\$347,590.41	\$341,703.53	\$38,805.50	\$728,099.44

General Fund (10)

2280 Nonpublic Support Services	<u>Elementary</u>	<u>Secondary</u>	<u>Federal</u>	<u>Total</u>
300 <u>Purchased Professional and Technical Services</u>				
322 Professional Educational Services – lus			60,055.47	60,055.47
Total Purchased Professional and Technical Services			\$60,055.47	\$60,055.47
Total 2280 Nonpublic Support Services			\$60,055.47	\$60,055.47

LEA : 123464502 Lower Merion SD

Printed 11/19/2024 9:38:02 AM

Page - 16 of 70

General Fund (10)**2300 Support Services – Administration**

	<u>Elementary</u>	<u>Secondary</u>	<u>Federal</u>	<u>Total</u>
100 Personnel Services – Salaries				
100 Personnel Services – Salaries	3,614,359.05	4,858,874.06		9,905,557.89
Total Personnel Services – Salaries	\$3,614,359.05	\$4,858,874.06		\$9,905,557.89
200 Personnel Services – Employee Benefits				
210 Group Insurance – Contracted Provider	17,637.25	25,327.75		47,141.00
220 Social Security Contributions	271,320.88	367,284.17		741,486.86
230 PSERS Retirement Contributions	1,224,865.54	1,644,755.82		3,341,789.65
250 Unemployment Compensation	456.60	663.40		1,228.00
260 Workers' Compensation	23,622.45	33,918.55		63,137.00
270 Group Insurance – Self-Insurance	764,805.86	1,139,765.81		2,088,154.45
280 Other Post-Employment Benefits (OPEB)		42,575.00		42,575.00
299 All Other Employee Benefits				22,621.90
Total Personnel Services – Employee Benefits	\$2,302,708.58	\$3,254,290.50		\$6,348,133.86
300 Purchased Professional and Technical Services				
330 Other Professional Services				1,452,030.40
340 Technical Services				8,840.50
390 Other Purchased Professional and Technical Services				9,000.00
Total Purchased Professional and Technical Services				\$1,469,870.90
400 Purchased Property Services				
430 Repairs and Maintenance Services	9,874.24	12,388.53		22,362.77
440 Rentals	690.00	38,254.29		39,444.29
Total Purchased Property Services	\$10,564.24	\$50,642.82		\$61,807.06
500 Other Purchased Services				
520 Insurance – General				35,389.25
530 Communications	1,563.79	7,316.04		32,752.93
549 Other Advertising/Public Relations				2,854.50
550 Printing and Binding		2,792.62		38,773.82
580 Travel	50.25	350.25		512.23
Total Other Purchased Services	\$1,614.04	\$10,458.91		\$110,282.73
600 Supplies				
610 General Supplies	6,887.87	79,366.13		88,755.28
630 Food	269.81	7,772.97		16,220.05
640 Books and Periodicals	1,367.40	9,373.10		10,740.50
650 Supplies & Fees – Technology Related	4,803.98	36,132.61		86,314.27
Total Supplies	\$13,329.06	\$132,644.81		\$202,030.10
800 Other Objects				
810 Dues and Fees	4,731.66	2,794.87		29,349.22
820 Claims and Judgments Against the LEA				2,287.16
890 Miscellaneous Expenditures				5,146.13
Total Other Objects	\$4,731.66	\$2,794.87		\$36,782.51
Total 2300 Support Services – Administration	\$5,947,306.63	\$8,309,705.97		\$18,134,465.05

LEA : 123464502 Lower Merion SD

Printed 11/19/2024 9:38:02 AM

General Fund (10)

2310 Board Services	Elementary	Secondary	Federal	Total
100 Personnel Services – Salaries				
100 Personnel Services – Salaries				11,330.00
Total Personnel Services – Salaries				\$11,330.00
200 Personnel Services – Employee Benefits				
220 Social Security Contributions				866.74
230 PSERS Retirement Contributions				3,852.20
Total Personnel Services – Employee Benefits				\$4,718.94
300 Purchased Professional and Technical Services				
330 Other Professional Services				41,250.00
390 Other Purchased Professional and Technical Services				9,000.00
Total Purchased Professional and Technical Services				\$50,250.00
500 Other Purchased Services				
549 Other Advertising/Public Relations				2,854.50
Total Other Purchased Services				\$2,854.50
600 Supplies				
630 Food				718.33
Total Supplies				\$718.33
800 Other Objects				
810 Dues and Fees				18,330.69
820 Claims and Judgments Against the LEA				2,287.16
890 Miscellaneous Expenditures				5,146.13
Total Other Objects				\$25,763.98
Total 2310 Board Services				\$95,635.75

General Fund (10)

2320 Board Treasurer Services	<u>Elementary</u>	<u>Secondary</u>	<u>Federal</u>	<u>Total</u>
500 <u>Other Purchased Services</u>				
520 Insurance – General				444.00
Total Other Purchased Services				\$444.00
Total 2320 Board Treasurer Services				\$444.00

LEA : 123464502 Lower Merion SD

Printed 11/19/2024 9:38:02 AM

General Fund (10)

2330 Tax Assessment and Collection Services	Elementary	Secondary	Federal	Total
100 Personnel Services – Salaries				
100 Personnel Services – Salaries				23,666.00
Total Personnel Services – Salaries				\$23,666.00
200 Personnel Services – Employee Benefits				
220 Social Security Contributions				1,810.37
Total Personnel Services – Employee Benefits				\$1,810.37
300 Purchased Professional and Technical Services				
330 Other Professional Services				44,791.71
Total Purchased Professional and Technical Services				\$44,791.71
500 Other Purchased Services				
520 Insurance – General				34,945.25
530 Communications				14,826.94
550 Printing and Binding				20,553.28
Total Other Purchased Services				\$70,325.47
600 Supplies				
650 Supplies & Fees – Technology Related				5,879.84
Total Supplies				\$5,879.84
Total 2330 Tax Assessment and Collection Services				\$146,473.39

LEA : 123464502 Lower Merion SD

Printed 11/19/2024 9:38:02 AM

General Fund (10)

2340 Staff Relations and Negotiations Services

<u>Elementary</u>	<u>Secondary</u>	<u>Federal</u>	<u>Total</u>
-------------------	------------------	----------------	--------------

300 Purchased Professional and Technical Services

330 Other Professional Services			37,947.50
---------------------------------	--	--	-----------

Total Purchased Professional and Technical Services			\$37,947.50
--	--	--	--------------------

Total 2340 Staff Relations and Negotiations Services			\$37,947.50
---	--	--	--------------------

LEA : 123464502 Lower Merion SD

Printed 11/19/2024 9:38:02 AM

General Fund (10)

2350 Legal and Accounting Services	<u>Elementary</u>	<u>Secondary</u>	<u>Federal</u>	<u>Total</u>
300 <u>Purchased Professional and Technical Services</u>				
330 Other Professional Services				1,315,816.94
Total Purchased Professional and Technical Services				\$1,315,816.94
Total 2350 Legal and Accounting Services				\$1,315,816.94

General Fund (10)

2360 Office of the Superintendent / Executive Director Services

	Elementary	Secondary	Federal	Total
100 <u>Personnel Services – Salaries</u>				
100 Personnel Services – Salaries				831,663.32
Total Personnel Services – Salaries				\$831,663.32
200 <u>Personnel Services – Employee Benefits</u>				
210 Group Insurance – Contracted Provider				1,981.00
220 Social Security Contributions				58,436.96
230 PSERS Retirement Contributions				275,916.37
250 Unemployment Compensation				51.00
260 Workers' Compensation				2,656.00
270 Group Insurance – Self-Insurance				90,221.25
299 All Other Employee Benefits				22,621.90
Total Personnel Services – Employee Benefits				\$451,884.48
300 <u>Purchased Professional and Technical Services</u>				
330 Other Professional Services				1,800.00
Total Purchased Professional and Technical Services				\$1,800.00
400 <u>Purchased Property Services</u>				
430 Repairs and Maintenance Services				100.00
Total Purchased Property Services				\$100.00
500 <u>Other Purchased Services</u>				
530 Communications	34.00	35.00		69.00
Total Other Purchased Services	\$34.00	\$35.00		\$69.00
600 <u>Supplies</u>				
610 General Supplies				1,145.80
630 Food				7,458.94
Total Supplies				\$8,604.74
800 <u>Other Objects</u>				
810 Dues and Fees				2,442.00
Total Other Objects				\$2,442.00
Total 2360 Office of the Superintendent / Executive Director Services	\$34.00	\$35.00		\$1,296,563.54

LEA : 123464502 Lower Merion SD

Printed 11/19/2024 9:38:02 AM

Page - 23 of 70

General Fund (10)

2370 Community Relations Services

ElementarySecondaryFederalTotal100 Personnel Services – Salaries

100 Personnel Services – Salaries				289,202.46
-----------------------------------	--	--	--	------------

Total Personnel Services – Salaries**\$289,202.46**200 Personnel Services – Employee Benefits

210 Group Insurance – Contracted Provider				1,064.00
---	--	--	--	----------

220 Social Security Contributions				21,832.98
-----------------------------------	--	--	--	-----------

230 PSERS Retirement Contributions				98,402.25
------------------------------------	--	--	--	-----------

250 Unemployment Compensation				28.00
-------------------------------	--	--	--	-------

260 Workers' Compensation				1,425.00
---------------------------	--	--	--	----------

270 Group Insurance – Self-Insurance				44,158.00
--------------------------------------	--	--	--	-----------

Total Personnel Services – Employee Benefits**\$166,910.23**300 Purchased Professional and Technical Services

330 Other Professional Services				10,424.25
---------------------------------	--	--	--	-----------

340 Technical Services				8,840.50
------------------------	--	--	--	----------

Total Purchased Professional and Technical Services**\$19,264.75**400 Purchased Property Services

440 Rentals				500.00
-------------	--	--	--	--------

Total Purchased Property Services**\$500.00**500 Other Purchased Services

530 Communications				9,046.16
--------------------	--	--	--	----------

550 Printing and Binding				15,427.92
--------------------------	--	--	--	-----------

580 Travel				111.73
------------	--	--	--	--------

Total Other Purchased Services**\$24,585.81**600 Supplies

610 General Supplies				1,355.48
----------------------	--	--	--	----------

650 Supplies & Fees – Technology Related				39,497.84
--	--	--	--	-----------

Total Supplies**\$40,853.32**800 Other Objects

810 Dues and Fees				1,050.00
-------------------	--	--	--	----------

Total Other Objects**\$1,050.00****Total 2370 Community Relations Services****\$542,366.57**

LEA : 123464502 Lower Merion SD

Printed 11/19/2024 9:38:02 AM

Page - 24 of 70

General Fund (10)**2380 Office of the Principal Services**

	<u>Elementary</u>	<u>Secondary</u>	<u>Federal</u>	<u>Total</u>
100 Personnel Services – Salaries				
100 Personnel Services – Salaries	3,614,359.05	4,858,874.06		8,473,233.11
Total Personnel Services – Salaries	\$3,614,359.05	\$4,858,874.06		\$8,473,233.11
200 Personnel Services – Employee Benefits				
210 Group Insurance – Contracted Provider	17,637.25	25,327.75		42,965.00
220 Social Security Contributions	271,320.88	367,284.17		638,605.05
230 PSERS Retirement Contributions	1,224,865.54	1,644,755.82		2,869,621.36
250 Unemployment Compensation	456.60	663.40		1,120.00
260 Workers' Compensation	23,622.45	33,918.55		57,541.00
270 Group Insurance – Self-Insurance	764,805.86	1,139,765.81		1,904,571.67
280 Other Post-Employment Benefits (OPEB)		42,575.00		42,575.00
Total Personnel Services – Employee Benefits	\$2,302,708.58	\$3,254,290.50		\$5,556,999.08
400 Purchased Property Services				
430 Repairs and Maintenance Services	9,874.24	12,388.53		22,262.77
440 Rentals	690.00	38,254.29		38,944.29
Total Purchased Property Services	\$10,564.24	\$50,642.82		\$61,207.06
500 Other Purchased Services				
530 Communications	1,529.79	7,281.04		8,810.83
550 Printing and Binding		2,792.62		2,792.62
580 Travel	50.25	350.25		400.50
Total Other Purchased Services	\$1,580.04	\$10,423.91		\$12,003.95
600 Supplies				
610 General Supplies	6,887.87	79,366.13		86,254.00
630 Food	269.81	7,772.97		8,042.78
640 Books and Periodicals	1,367.40	9,373.10		10,740.50
650 Supplies & Fees – Technology Related	4,803.98	36,132.61		40,936.59
Total Supplies	\$13,329.06	\$132,644.81		\$145,973.87
800 Other Objects				
810 Dues and Fees	4,731.66	2,794.87		7,526.53
Total Other Objects	\$4,731.66	\$2,794.87		\$7,526.53
Total 2380 Office of the Principal Services	\$5,947,272.63	\$8,309,670.97		\$14,256,943.60

General Fund (10)				
2390 Other Administration Services	<u>Elementary</u>	<u>Secondary</u>	<u>Federal</u>	<u>Total</u>
100 <u>Personnel Services – Salaries</u>				
100 Personnel Services – Salaries				276,463.00
Total Personnel Services – Salaries				\$276,463.00
200 <u>Personnel Services – Employee Benefits</u>				
210 Group Insurance – Contracted Provider				1,131.00
220 Social Security Contributions				19,934.76
230 PSERS Retirement Contributions				93,997.47
250 Unemployment Compensation				29.00
260 Workers' Compensation				1,515.00
270 Group Insurance – Self-Insurance				49,203.53
Total Personnel Services – Employee Benefits				\$165,810.76
Total 2390 Other Administration Services				\$442,273.76

LEA : 123464502 Lower Merion SD

Printed 11/19/2024 9:38:02 AM

Page - 26 of 70

General Fund (10)

2400 Support Services – Pupil Health

ElementarySecondaryFederalTotal100 Personnel Services – Salaries

100 Personnel Services – Salaries

2,562,224.02

Total Personnel Services – Salaries**\$2,562,224.02**200 Personnel Services – Employee Benefits

210 Group Insurance – Contracted Provider

12,539.00

220 Social Security Contributions

188,098.54

230 PSERS Retirement Contributions

873,907.38

250 Unemployment Compensation

327.00

260 Workers' Compensation

16,802.00

270 Group Insurance – Self-Insurance

536,528.90

280 Other Post-Employment Benefits (OPEB)

23,150.00

Total Personnel Services – Employee Benefits**\$1,651,352.82**300 Purchased Professional and Technical Services

330 Other Professional Services

363,226.42

Total Purchased Professional and Technical Services**\$363,226.42**500 Other Purchased Services

580 Travel

953.14

Total Other Purchased Services**\$953.14**600 Supplies

610 General Supplies

28,159.33

630 Food

599.00

650 Supplies & Fees – Technology Related

23,832.31

Total Supplies**\$52,590.64**800 Other Objects

810 Dues and Fees

758.68

Total Other Objects**\$758.68****Total 2400 Support Services – Pupil Health****\$4,631,105.72**

LEA : 123464502 Lower Merion SD

Printed 11/19/2024 9:38:02 AM

Page - 27 of 70

General Fund (10)

2410 Supervision of Health Services

ElementarySecondaryFederalTotal**100 Personnel Services – Salaries**

100 Personnel Services – Salaries

146,905.74

Total Personnel Services – Salaries**\$146,905.74****200 Personnel Services – Employee Benefits**

210 Group Insurance – Contracted Provider

395.00

220 Social Security Contributions

9,929.12

230 PSERS Retirement Contributions

49,948.06

250 Unemployment Compensation

10.00

260 Workers' Compensation

530.00

270 Group Insurance – Self-Insurance

16,426.00

Total Personnel Services – Employee Benefits**\$77,238.18****Total 2410 Supervision of Health Services****\$224,143.92**

LEA : 123464502 Lower Merion SD

Printed 11/19/2024 9:38:02 AM

Page - 28 of 70

General Fund (10)

2411 Supervision of Health Services – Head of Component

ElementarySecondaryFederalTotal**100 Personnel Services – Salaries**

100 Personnel Services – Salaries

146,905.74

Total Personnel Services – Salaries**\$146,905.74****200 Personnel Services – Employee Benefits**

210 Group Insurance – Contracted Provider

395.00

220 Social Security Contributions

9,929.12

230 PSERS Retirement Contributions

49,948.06

250 Unemployment Compensation

10.00

260 Workers' Compensation

530.00

270 Group Insurance – Self-Insurance

16,426.00

Total Personnel Services – Employee Benefits**\$77,238.18****Total 2411 Supervision of Health Services – Head of Component****\$224,143.92**

General Fund (10)

2420 Medical Services

<u>Elementary</u>	<u>Secondary</u>	<u>Federal</u>	<u>Total</u>
-------------------	------------------	----------------	--------------

300 Purchased Professional and Technical Services

330 Other Professional Services			34,999.92
---------------------------------	--	--	-----------

Total Purchased Professional and Technical Services			\$34,999.92
--	--	--	--------------------

Total 2420 Medical Services			\$34,999.92
------------------------------------	--	--	--------------------

LEA : 123464502 Lower Merion SD

Printed 11/19/2024 9:38:02 AM

General Fund (10)

2430 Dental Services	<u>Elementary</u>	<u>Secondary</u>	<u>Federal</u>	<u>Total</u>
300 <u>Purchased Professional and Technical Services</u>				
330 Other Professional Services				520.00
Total Purchased Professional and Technical Services				\$520.00
Total 2430 Dental Services				\$520.00

LEA : 123464502 Lower Merion SD

Printed 11/19/2024 9:38:02 AM

General Fund (10)

2440 Nursing Services

	<u>Elementary</u>	<u>Secondary</u>	<u>Federal</u>	<u>Total</u>
100 <u>Personnel Services – Salaries</u>				
100 Personnel Services – Salaries				2,090,370.78
Total Personnel Services – Salaries				\$2,090,370.78
200 <u>Personnel Services – Employee Benefits</u>				
210 Group Insurance – Contracted Provider				9,899.00
220 Social Security Contributions				153,933.68
230 PSERS Retirement Contributions				713,479.96
250 Unemployment Compensation				260.00
260 Workers' Compensation				13,263.00
270 Group Insurance – Self-Insurance				426,266.49
280 Other Post-Employment Benefits (OPEB)				7,800.00
Total Personnel Services – Employee Benefits				\$1,324,902.13
300 <u>Purchased Professional and Technical Services</u>				
330 Other Professional Services				327,706.50
Total Purchased Professional and Technical Services				\$327,706.50
500 <u>Other Purchased Services</u>				
580 Travel				953.14
Total Other Purchased Services				\$953.14
600 <u>Supplies</u>				
610 General Supplies				23,280.43
630 Food				599.00
650 Supplies & Fees – Technology Related				23,832.31
Total Supplies				\$47,711.74
800 <u>Other Objects</u>				
810 Dues and Fees				758.68
Total Other Objects				\$758.68
Total 2440 Nursing Services				\$3,792,402.97

LEA : 123464502 Lower Merion SD

Printed 11/19/2024 9:38:02 AM

General Fund (10)

2450 Nonpublic Health Services	<u>Elementary</u>	<u>Secondary</u>	<u>Federal</u>	<u>Total</u>
100 <u>Personnel Services – Salaries</u>				
100 Personnel Services – Salaries				324,947.50
Total Personnel Services – Salaries				\$324,947.50
200 <u>Personnel Services – Employee Benefits</u>				
210 Group Insurance – Contracted Provider				2,245.00
220 Social Security Contributions				24,235.74
230 PSERS Retirement Contributions				110,479.36
250 Unemployment Compensation				57.00
260 Workers' Compensation				3,009.00
270 Group Insurance – Self-Insurance				93,836.41
280 Other Post-Employment Benefits (OPEB)				15,350.00
Total Personnel Services – Employee Benefits				\$249,212.51
Total 2450 Nonpublic Health Services				\$574,160.01

LEA : 123464502 Lower Merion SD

Printed 11/19/2024 9:38:02 AM

General Fund (10)

2490 Other Health Services

<u>Elementary</u>	<u>Secondary</u>	<u>Federal</u>	<u>Total</u>
-------------------	------------------	----------------	--------------

600 Supplies

610 General Supplies			4,878.90
----------------------	--	--	----------

Total Supplies			\$4,878.90
-----------------------	--	--	-------------------

Total 2490 Other Health Services			\$4,878.90
---	--	--	-------------------

LEA : 123464502 Lower Merion SD

Printed 11/19/2024 9:38:02 AM

Page - 34 of 70

General Fund (10)

2500 Support Services – Business

ElementarySecondaryFederalTotal**100 Personnel Services – Salaries**

100 Personnel Services – Salaries				772,255.48
-----------------------------------	--	--	--	------------

Total Personnel Services – Salaries**\$772,255.48****200 Personnel Services – Employee Benefits**

210 Group Insurance – Contracted Provider				4,077.00
---	--	--	--	----------

220 Social Security Contributions				54,221.14
-----------------------------------	--	--	--	-----------

230 PSERS Retirement Contributions				262,566.60
------------------------------------	--	--	--	------------

250 Unemployment Compensation				107.00
-------------------------------	--	--	--	--------

260 Workers' Compensation				5,458.00
---------------------------	--	--	--	----------

270 Group Insurance – Self-Insurance				170,821.65
--------------------------------------	--	--	--	------------

299 All Other Employee Benefits				11,054.60
---------------------------------	--	--	--	-----------

Total Personnel Services – Employee Benefits**\$508,305.99****300 Purchased Professional and Technical Services**

330 Other Professional Services				8,625.00
---------------------------------	--	--	--	----------

340 Technical Services				57,152.47
------------------------	--	--	--	-----------

Total Purchased Professional and Technical Services**\$65,777.47****400 Purchased Property Services**

430 Repairs and Maintenance Services				12,690.34
--------------------------------------	--	--	--	-----------

440 Rentals				912.00
-------------	--	--	--	--------

Total Purchased Property Services**\$13,602.34****500 Other Purchased Services**

530 Communications				5,795.13
--------------------	--	--	--	----------

580 Travel				260.49
------------	--	--	--	--------

Total Other Purchased Services**\$6,055.62****600 Supplies**

610 General Supplies				5,260.98
----------------------	--	--	--	----------

630 Food				242.00
----------	--	--	--	--------

650 Supplies & Fees – Technology Related				9,449.44
--	--	--	--	----------

Total Supplies**\$14,952.42****700 Property**

762 Capitalized Equipment - Replacement				21,599.64
---	--	--	--	-----------

Total Property**\$21,599.64****800 Other Objects**

810 Dues and Fees				10,842.92
-------------------	--	--	--	-----------

Total Other Objects**\$10,842.92****Total 2500 Support Services – Business****\$1,413,391.88**

LEA : 123464502 Lower Merion SD

Printed 11/19/2024 9:38:02 AM

Page - 35 of 70

General Fund (10)

2510 Fiscal Services

	<u>Elementary</u>	<u>Secondary</u>	<u>Federal</u>	<u>Total</u>
100 Personnel Services – Salaries				
100 Personnel Services – Salaries				772,255.48
Total Personnel Services – Salaries				\$772,255.48
200 Personnel Services – Employee Benefits				
210 Group Insurance – Contracted Provider				4,077.00
220 Social Security Contributions				54,221.14
230 PSERS Retirement Contributions				262,566.60
250 Unemployment Compensation				107.00
260 Workers' Compensation				5,458.00
270 Group Insurance – Self-Insurance				170,821.65
299 All Other Employee Benefits				11,054.60
Total Personnel Services – Employee Benefits				\$508,305.99
300 Purchased Professional and Technical Services				
330 Other Professional Services				8,625.00
340 Technical Services				57,152.47
Total Purchased Professional and Technical Services				\$65,777.47
400 Purchased Property Services				
430 Repairs and Maintenance Services				12,690.34
440 Rentals				912.00
Total Purchased Property Services				\$13,602.34
500 Other Purchased Services				
530 Communications				5,795.13
580 Travel				260.49
Total Other Purchased Services				\$6,055.62
600 Supplies				
610 General Supplies				5,260.98
630 Food				242.00
650 Supplies & Fees – Technology Related				9,449.44
Total Supplies				\$14,952.42
700 Property				
762 Capitalized Equipment - Replacement				21,599.64
Total Property				\$21,599.64
800 Other Objects				
810 Dues and Fees				10,842.92
Total Other Objects				\$10,842.92
Total 2510 Fiscal Services				\$1,413,391.88

LEA : 123464502 Lower Merion SD

Printed 11/19/2024 9:38:02 AM

General Fund (10)				
2511 Supervision of Fiscal Services - Head of Component	<u>Elementary</u>	<u>Secondary</u>	<u>Federal</u>	<u>Total</u>
100 <u>Personnel Services – Salaries</u>				
100 Personnel Services – Salaries				313,181.00
Total Personnel Services – Salaries				\$313,181.00
200 <u>Personnel Services – Employee Benefits</u>				
210 Group Insurance – Contracted Provider				791.00
220 Social Security Contributions				20,437.59
230 PSERS Retirement Contributions				106,481.50
250 Unemployment Compensation				21.00
260 Workers' Compensation				1,060.00
270 Group Insurance – Self-Insurance				34,457.65
299 All Other Employee Benefits				11,054.60
Total Personnel Services – Employee Benefits				\$174,303.34
500 <u>Other Purchased Services</u>				
580 Travel				260.49
Total Other Purchased Services				\$260.49
600 <u>Supplies</u>				
650 Supplies & Fees – Technology Related				179.44
Total Supplies				\$179.44
800 <u>Other Objects</u>				
810 Dues and Fees				880.00
Total Other Objects				\$880.00
Total 2511 Supervision of Fiscal Services - Head of Component				\$488,804.27

LEA : 123464502 Lower Merion SD

Printed 11/19/2024 9:38:02 AM

Page - 37 of 70

General Fund (10)

2513 Receiving and Disbursing Funds Services

Elementary

Secondary

Federal

Total

100 Personnel Services – Salaries

100 Personnel Services – Salaries

119,317.23

Total Personnel Services – Salaries

\$119,317.23

200 Personnel Services – Employee Benefits

210 Group Insurance – Contracted Provider

832.00

220 Social Security Contributions

8,991.43

230 PSERS Retirement Contributions

40,567.84

250 Unemployment Compensation

22.00

260 Workers' Compensation

1,114.00

270 Group Insurance – Self-Insurance

34,524.00

Total Personnel Services – Employee Benefits

\$86,051.27

Total 2513 Receiving and Disbursing Funds Services

\$205,368.50

LEA : 123464502 Lower Merion SD

Printed 11/19/2024 9:38:02 AM

Page - 38 of 70

General Fund (10)

2514 Payroll Services

ElementarySecondaryFederalTotal**100 Personnel Services – Salaries**

100 Personnel Services – Salaries

120,938.90

Total Personnel Services – Salaries**\$120,938.90****200 Personnel Services – Employee Benefits**

210 Group Insurance – Contracted Provider

1,227.00

220 Social Security Contributions

8,598.40

230 PSERS Retirement Contributions

41,119.00

250 Unemployment Compensation

32.00

260 Workers' Compensation

1,642.00

270 Group Insurance – Self-Insurance

50,920.00

Total Personnel Services – Employee Benefits**\$103,538.40****Total 2514 Payroll Services****\$224,477.30**

LEA : 123464502 Lower Merion SD

Printed 11/19/2024 9:38:02 AM

General Fund (10)

2515 Financial Accounting Services	<u>Elementary</u>	<u>Secondary</u>	<u>Federal</u>	<u>Total</u>
100 <u>Personnel Services – Salaries</u>				
100 Personnel Services – Salaries				162,422.00
Total Personnel Services – Salaries				\$162,422.00
200 <u>Personnel Services – Employee Benefits</u>				
210 Group Insurance – Contracted Provider				618.00
220 Social Security Contributions				12,213.02
230 PSERS Retirement Contributions				55,223.48
250 Unemployment Compensation				16.00
260 Workers' Compensation				827.00
270 Group Insurance – Self-Insurance				25,650.00
Total Personnel Services – Employee Benefits				\$94,547.50
Total 2515 Financial Accounting Services				\$256,969.50

LEA : 123464502 Lower Merion SD

Printed 11/19/2024 9:38:02 AM

Page - 40 of 70

General Fund (10)

2519 Other Fiscal Services

ElementarySecondaryFederalTotal100 Personnel Services – Salaries

100 Personnel Services – Salaries				56,396.35
-----------------------------------	--	--	--	-----------

Total Personnel Services – Salaries**\$56,396.35**200 Personnel Services – Employee Benefits

210 Group Insurance – Contracted Provider				609.00
---	--	--	--	--------

220 Social Security Contributions				3,980.70
-----------------------------------	--	--	--	----------

230 PSERS Retirement Contributions				19,174.78
------------------------------------	--	--	--	-----------

250 Unemployment Compensation				16.00
-------------------------------	--	--	--	-------

260 Workers' Compensation				815.00
---------------------------	--	--	--	--------

270 Group Insurance – Self-Insurance				25,270.00
--------------------------------------	--	--	--	-----------

Total Personnel Services – Employee Benefits**\$49,865.48**300 Purchased Professional and Technical Services

330 Other Professional Services				8,625.00
---------------------------------	--	--	--	----------

340 Technical Services				57,152.47
------------------------	--	--	--	-----------

Total Purchased Professional and Technical Services**\$65,777.47**400 Purchased Property Services

430 Repairs and Maintenance Services				12,690.34
--------------------------------------	--	--	--	-----------

440 Rentals				912.00
-------------	--	--	--	--------

Total Purchased Property Services**\$13,602.34**500 Other Purchased Services

530 Communications				5,795.13
--------------------	--	--	--	----------

Total Other Purchased Services**\$5,795.13**600 Supplies

610 General Supplies				5,260.98
----------------------	--	--	--	----------

630 Food				242.00
----------	--	--	--	--------

650 Supplies & Fees – Technology Related				9,270.00
--	--	--	--	----------

Total Supplies**\$14,772.98**700 Property

762 Capitalized Equipment - Replacement				21,599.64
---	--	--	--	-----------

Total Property**\$21,599.64**800 Other Objects

810 Dues and Fees				9,962.92
-------------------	--	--	--	----------

Total Other Objects**\$9,962.92****Total 2519 Other Fiscal Services****\$237,772.31**

LEA : 123464502 Lower Merion SD

Printed 11/19/2024 9:38:02 AM

Page - 41 of 70

General Fund (10)**2600 Operation and Maintenance of Plant Services****Elementary****Secondary****Federal****Total****100 Personnel Services – Salaries**

100 Personnel Services – Salaries

8,497,311.96

Total Personnel Services – Salaries**\$8,497,311.96****200 Personnel Services – Employee Benefits**

210 Group Insurance – Contracted Provider

46,969.00

220 Social Security Contributions

649,493.21

230 PSERS Retirement Contributions

2,934,363.48

250 Unemployment Compensation

1,228.00

260 Workers' Compensation

62,918.00

270 Group Insurance – Self-Insurance

1,975,670.68

280 Other Post-Employment Benefits (OPEB)

38,750.00

Total Personnel Services – Employee Benefits**\$5,709,392.37****300 Purchased Professional and Technical Services**

330 Other Professional Services

134,012.72

350 Security / Safety Services

685,608.16

Total Purchased Professional and Technical Services**\$819,620.88****400 Purchased Property Services**

410 Cleaning Services

339,827.51

420 Utility Services

329,999.09

430 Repairs and Maintenance Services

1,367,377.06

440 Rentals

69,576.51

460 Extermination Services

12,230.00

Total Purchased Property Services**\$2,119,010.17****500 Other Purchased Services**

521 Fire Insurance

504,222.00

522 Automotive Liability Insurance

85,652.00

523 General Property and Liability Insurance

479,717.00

529 Other Insurance

389,944.50

530 Communications

400,047.01

550 Printing and Binding

1,248.28

580 Travel

252.49

Total Other Purchased Services**\$1,861,083.28****600 Supplies**

610 General Supplies

819,396.67

826,967.68

1,646,364.35

620 Energy

1,658,554.00

640 Books and Periodicals

56.00

650 Supplies & Fees – Technology Related

97,848.95

Total Supplies**\$819,396.67****\$826,967.68****\$3,402,823.30****700 Property**

752 Capital Equipment – Original and Additional

16,863.10

762 Capitalized Equipment - Replacement

23,063.10

Total Property**\$39,926.20**

LEA : 123464502 Lower Merion SD

Printed 11/19/2024 9:38:02 AM

General Fund (10)

2600 Operation and Maintenance of Plant Services

Elementary Secondary Federal Total

800 Other Objects

810 Dues and Fees (2,715.89)

Total Other Objects (\$2,715.89)

Total 2600 Operation and Maintenance of Plant Services \$819,396.67 \$826,967.68 \$22,446,452.27

LEA : 123464502 Lower Merion SD

Printed 11/19/2024 9:38:02 AM

Page - 43 of 70

General Fund (10)

2610 Supervision of Operation and Maintenance of Plant Services

ElementarySecondaryFederalTotal100 Personnel Services – Salaries

100 Personnel Services – Salaries

1,016,395.06

Total Personnel Services – Salaries**\$1,016,395.06**200 Personnel Services – Employee Benefits

210 Group Insurance – Contracted Provider

5,225.00

220 Social Security Contributions

77,540.93

230 PSERS Retirement Contributions

345,094.61

250 Unemployment Compensation

136.00

260 Workers' Compensation

6,998.00

270 Group Insurance – Self-Insurance

224,414.39

Total Personnel Services – Employee Benefits**\$659,408.93**400 Purchased Property Services

430 Repairs and Maintenance Services

12,947.18

Total Purchased Property Services**\$12,947.18**500 Other Purchased Services

530 Communications

166.50

580 Travel

233.73

Total Other Purchased Services**\$400.23**800 Other Objects

810 Dues and Fees

1,008.00

Total Other Objects**\$1,008.00****Total 2610 Supervision of Operation and Maintenance of Plant Services****\$1,690,159.40**

LEA : 123464502 Lower Merion SD

Printed 11/19/2024 9:38:02 AM

Page - 44 of 70

General Fund (10)

2611 Supervision of Operation and Maintenance of Plant Services – Head of Component

Elementary

Secondary

Federal

Total

100 Personnel Services – Salaries

100 Personnel Services – Salaries

171,360.00

Total Personnel Services – Salaries

\$171,360.00

200 Personnel Services – Employee Benefits

210 Group Insurance – Contracted Provider

618.00

220 Social Security Contributions

12,497.30

230 PSERS Retirement Contributions

58,262.36

250 Unemployment Compensation

16.00

260 Workers' Compensation

827.00

270 Group Insurance – Self-Insurance

25,650.00

Total Personnel Services – Employee Benefits

\$97,870.66

400 Purchased Property Services

430 Repairs and Maintenance Services

748.13

Total Purchased Property Services

\$748.13

Total 2611 Supervision of Operation and Maintenance of Plant Services – Head of Component

\$269,978.79

LEA : 123464502 Lower Merion SD

Printed 11/19/2024 9:38:02 AM

Page - 45 of 70

General Fund (10)

2619 Supervision of Operation and Maintenance of Plant Services – All Other Supervision

ElementarySecondaryFederalTotal**100 Personnel Services – Salaries**

100 Personnel Services – Salaries

845,035.06

Total Personnel Services – Salaries**\$845,035.06****200 Personnel Services – Employee Benefits**

210 Group Insurance – Contracted Provider

4,607.00

220 Social Security Contributions

65,043.63

230 PSERS Retirement Contributions

286,832.25

250 Unemployment Compensation

120.00

260 Workers' Compensation

6,171.00

270 Group Insurance – Self-Insurance

198,764.39

Total Personnel Services – Employee Benefits**\$561,538.27****400 Purchased Property Services**

430 Repairs and Maintenance Services

12,199.05

Total Purchased Property Services**\$12,199.05****500 Other Purchased Services**

530 Communications

166.50

580 Travel

233.73

Total Other Purchased Services**\$400.23****800 Other Objects**

810 Dues and Fees

1,008.00

Total Other Objects**\$1,008.00****Total 2619 Supervision of Operation and Maintenance of Plant Services – All Other Supervision****\$1,420,180.61**

LEA : 123464502 Lower Merion SD

Printed 11/19/2024 9:38:02 AM

Page - 46 of 70

General Fund (10)

2620 Operation of Buildings Services

ElementarySecondaryFederalTotal100 Personnel Services – Salaries

100 Personnel Services – Salaries				6,856,726.28
-----------------------------------	--	--	--	--------------

Total Personnel Services – Salaries**\$6,856,726.28**200 Personnel Services – Employee Benefits

210 Group Insurance – Contracted Provider				38,719.00
---	--	--	--	-----------

220 Social Security Contributions				525,281.80
-----------------------------------	--	--	--	------------

230 PSERS Retirement Contributions				2,378,606.58
------------------------------------	--	--	--	--------------

250 Unemployment Compensation				1,013.00
-------------------------------	--	--	--	----------

260 Workers' Compensation				51,868.00
---------------------------	--	--	--	-----------

270 Group Insurance – Self-Insurance				1,625,618.29
--------------------------------------	--	--	--	--------------

280 Other Post-Employment Benefits (OPEB)				38,750.00
---	--	--	--	-----------

Total Personnel Services – Employee Benefits**\$4,659,856.67**300 Purchased Professional and Technical Services

330 Other Professional Services				130,819.13
---------------------------------	--	--	--	------------

Total Purchased Professional and Technical Services**\$130,819.13**400 Purchased Property Services

410 Cleaning Services				5,007.96
-----------------------	--	--	--	----------

420 Utility Services				329,999.09
----------------------	--	--	--	------------

430 Repairs and Maintenance Services				1,250,343.68
--------------------------------------	--	--	--	--------------

440 Rentals				5,334.33
-------------	--	--	--	----------

460 Extermination Services				12,230.00
----------------------------	--	--	--	-----------

Total Purchased Property Services**\$1,602,915.06**500 Other Purchased Services

521 Fire Insurance				504,222.00
--------------------	--	--	--	------------

522 Automotive Liability Insurance				85,652.00
------------------------------------	--	--	--	-----------

523 General Property and Liability Insurance				479,717.00
--	--	--	--	------------

529 Other Insurance				389,944.50
---------------------	--	--	--	------------

530 Communications				221,633.72
--------------------	--	--	--	------------

550 Printing and Binding				1,248.28
--------------------------	--	--	--	----------

580 Travel				18.76
------------	--	--	--	-------

Total Other Purchased Services**\$1,682,436.26**600 Supplies

610 General Supplies	689,795.26	604,989.87		1,294,785.13
----------------------	------------	------------	--	--------------

620 Energy				1,658,554.00
------------	--	--	--	--------------

640 Books and Periodicals				56.00
---------------------------	--	--	--	-------

650 Supplies & Fees – Technology Related				85,876.74
--	--	--	--	-----------

Total Supplies**\$689,795.26****\$604,989.87****\$3,039,271.87**700 Property

752 Capital Equipment – Original and Additional				16,863.10
---	--	--	--	-----------

762 Capitalized Equipment - Replacement				23,063.10
---	--	--	--	-----------

Total Property**\$39,926.20**800 Other Objects

LEA : 123464502 Lower Merion SD

Printed 11/19/2024 9:38:02 AM

General Fund (10)

2620 Operation of Buildings Services

<u>Elementary</u>	<u>Secondary</u>	<u>Federal</u>	<u>Total</u>
-------------------	------------------	----------------	--------------

800 Other Objects

810 Dues and Fees			(3,723.89)
-------------------	--	--	------------

Total Other Objects			(\$3,723.89)
----------------------------	--	--	---------------------

Total 2620 Operation of Buildings Services	\$689,795.26	\$604,989.87	\$18,008,227.58
---	---------------------	---------------------	------------------------

LEA : 123464502 Lower Merion SD

Printed 11/19/2024 9:38:02 AM

Page - 48 of 70

General Fund (10)

2630 Care and Upkeep of Grounds Services

ElementarySecondaryFederalTotal**100 Personnel Services – Salaries**

100 Personnel Services – Salaries

624,190.62

Total Personnel Services – Salaries**\$624,190.62****200 Personnel Services – Employee Benefits**

210 Group Insurance – Contracted Provider

3,025.00

220 Social Security Contributions

46,670.48

230 PSERS Retirement Contributions

210,662.29

250 Unemployment Compensation

79.00

260 Workers' Compensation

4,052.00

270 Group Insurance – Self-Insurance

125,638.00

Total Personnel Services – Employee Benefits**\$390,126.77****300 Purchased Professional and Technical Services**

330 Other Professional Services

319.00

Total Purchased Professional and Technical Services**\$319.00****400 Purchased Property Services**

410 Cleaning Services

333,269.14

430 Repairs and Maintenance Services

101,694.82

440 Rentals

64,242.18

Total Purchased Property Services**\$499,206.14****600 Supplies**

610 General Supplies

85,871.67

84,349.34

170,221.01

650 Supplies & Fees – Technology Related

33.08

Total Supplies**\$85,871.67****\$84,349.34****\$170,254.09****Total 2630 Care and Upkeep of Grounds Services****\$85,871.67****\$84,349.34****\$1,684,096.62**

LEA : 123464502 Lower Merion SD

Printed 11/19/2024 9:38:02 AM

General Fund (10)

2650 Vehicle Operation and Maintenance Services (Other Than Student Transportation Vehicles)	<u>Elementary</u>	<u>Secondary</u>	<u>Federal</u>	<u>Total</u>
400 <u>Purchased Property Services</u>				
430 Repairs and Maintenance Services				1,691.38
Total Purchased Property Services				\$1,691.38
600 <u>Supplies</u>				
610 General Supplies	103.21	104.95		208.16
Total Supplies	\$103.21	\$104.95		\$208.16
Total 2650 Vehicle Operation and Maintenance Services (Other Than Student Transportation Vehicles)	\$103.21	\$104.95		\$1,899.54

LEA : 123464502 Lower Merion SD

Printed 11/19/2024 9:38:02 AM

General Fund (10)

2660 Safety and Security Services	<u>Elementary</u>	<u>Secondary</u>	<u>Federal</u>	<u>Total</u>
300 <u>Purchased Professional and Technical Services</u>				
350 Security / Safety Services				685,608.16
Total Purchased Professional and Technical Services				\$685,608.16
400 <u>Purchased Property Services</u>				
410 Cleaning Services				1,550.41
430 Repairs and Maintenance Services				700.00
Total Purchased Property Services				\$2,250.41
600 <u>Supplies</u>				
610 General Supplies	43,626.53	137,523.52		181,150.05
650 Supplies & Fees – Technology Related				909.62
Total Supplies	\$43,626.53	\$137,523.52		\$182,059.67
Total 2660 Safety and Security Services	\$43,626.53	\$137,523.52		\$869,918.24

LEA : 123464502 Lower Merion SD

Printed 11/19/2024 9:38:02 AM

General Fund (10)

	<u>Elementary</u>	<u>Secondary</u>	<u>Federal</u>	<u>Total</u>
2690 Other Operation and Maintenance of Plant Services				
300 <u>Purchased Professional and Technical Services</u>				
330 Other Professional Services				2,874.59
Total Purchased Professional and Technical Services				\$2,874.59
500 <u>Other Purchased Services</u>				
530 Communications				178,246.79
Total Other Purchased Services				\$178,246.79
600 <u>Supplies</u>				
650 Supplies & Fees – Technology Related				11,029.51
Total Supplies				\$11,029.51
Total 2690 Other Operation and Maintenance of Plant Services				\$192,150.89

LEA : 123464502 Lower Merion SD

Printed 11/19/2024 9:38:02 AM

Page - 52 of 70

General Fund (10)

2700 Student Transportation Services

ElementarySecondaryFederalTotal100 Personnel Services – Salaries

100 Personnel Services – Salaries 8,034,316.62

Total Personnel Services – Salaries**\$8,034,316.62**200 Personnel Services – Employee Benefits

210 Group Insurance – Contracted Provider 59,328.46

220 Social Security Contributions 607,972.11

230 PSERS Retirement Contributions 2,694,263.62

250 Unemployment Compensation 1,487.73

260 Workers' Compensation 79,975.70

270 Group Insurance – Self-Insurance 2,559,098.80

280 Other Post-Employment Benefits (OPEB) 133,409.42

Total Personnel Services – Employee Benefits**\$6,135,535.84**300 Purchased Professional and Technical Services

330 Other Professional Services 37,008.00

Total Purchased Professional and Technical Services**\$37,008.00**400 Purchased Property Services

430 Repairs and Maintenance Services 243,904.40

440 Rentals 7,837.23

Total Purchased Property Services**\$251,741.63**500 Other Purchased Services

513 Contracted Carriers 4,181,734.44

516 Student Transportation Services From the IU 116,804.98

522 Automotive Liability Insurance 198,000.00

524 Other Pupil Transportation Insurance 45,000.00

530 Communications 143.61

550 Printing and Binding 2,065.00

580 Travel 10,238.28

Total Other Purchased Services**\$4,553,986.31**600 Supplies

610 General Supplies 430,929.96

620 Energy 408,445.26

630 Food 1,894.05

640 Books and Periodicals 57.96

650 Supplies & Fees – Technology Related 71,994.22

Total Supplies**\$913,321.45**700 Property

752 Capital Equipment – Original and Additional 10,995.00

Total Property**\$10,995.00**800 Other Objects

810 Dues and Fees 1,602.72

Total Other Objects**\$1,602.72****Total 2700 Student Transportation Services****\$19,938,507.57**

LEA : 123464502 Lower Merion SD

Printed 11/19/2024 9:38:02 AM

General Fund (10)				
2710 Supervision of Student Transportation Services	<u>Elementary</u>	<u>Secondary</u>	<u>Federal</u>	<u>Total</u>
100 <u>Personnel Services – Salaries</u>				
100 Personnel Services – Salaries				895,142.35
Total Personnel Services – Salaries				\$895,142.35
200 <u>Personnel Services – Employee Benefits</u>				
210 Group Insurance – Contracted Provider				4,752.00
220 Social Security Contributions				67,523.88
230 PSERS Retirement Contributions				301,606.93
250 Unemployment Compensation				123.00
260 Workers' Compensation				6,365.00
270 Group Insurance – Self-Insurance				204,065.08
280 Other Post-Employment Benefits (OPEB)				42,300.00
Total Personnel Services – Employee Benefits				\$626,735.89
300 <u>Purchased Professional and Technical Services</u>				
330 Other Professional Services				3,156.50
Total Purchased Professional and Technical Services				\$3,156.50
400 <u>Purchased Property Services</u>				
430 Repairs and Maintenance Services				1,957.09
Total Purchased Property Services				\$1,957.09
500 <u>Other Purchased Services</u>				
530 Communications				20.00
550 Printing and Binding				2,065.00
580 Travel				3,488.65
Total Other Purchased Services				\$5,573.65
600 <u>Supplies</u>				
610 General Supplies				7,166.36
630 Food				831.40
640 Books and Periodicals				40.25
650 Supplies & Fees – Technology Related				55,284.62
Total Supplies				\$63,322.63
800 <u>Other Objects</u>				
810 Dues and Fees				779.00
Total Other Objects				\$779.00
Total 2710 Supervision of Student Transportation Services				\$1,596,667.11

LEA : 123464502 Lower Merion SD

Printed 11/19/2024 9:38:02 AM

Page - 54 of 70

General Fund (10)

2711 Supervision of Student Transportation Services – Head of Component

	<u>Elementary</u>	<u>Secondary</u>	<u>Federal</u>	<u>Total</u>
100 <u>Personnel Services – Salaries</u>				
100 Personnel Services – Salaries				207,876.02
Total Personnel Services – Salaries				\$207,876.02
200 <u>Personnel Services – Employee Benefits</u>				
210 Group Insurance – Contracted Provider				1,131.00
220 Social Security Contributions				15,463.49
230 PSERS Retirement Contributions				70,677.87
250 Unemployment Compensation				29.00
260 Workers' Compensation				1,515.00
270 Group Insurance – Self-Insurance				46,982.00
Total Personnel Services – Employee Benefits				\$135,798.36
300 <u>Purchased Professional and Technical Services</u>				
330 Other Professional Services				3,156.50
Total Purchased Professional and Technical Services				\$3,156.50
400 <u>Purchased Property Services</u>				
430 Repairs and Maintenance Services				1,595.26
Total Purchased Property Services				\$1,595.26
500 <u>Other Purchased Services</u>				
580 Travel				2,115.00
Total Other Purchased Services				\$2,115.00
600 <u>Supplies</u>				
610 General Supplies				180.95
640 Books and Periodicals				40.25
650 Supplies & Fees – Technology Related				672.74
Total Supplies				\$893.94
Total 2711 Supervision of Student Transportation Services – Head of Component				\$351,435.08

LEA : 123464502 Lower Merion SD

Printed 11/19/2024 9:38:02 AM

Page - 55 of 70

General Fund (10)

2719 Supervision of Student Transportation Services – All Other Supervision

ElementarySecondaryFederalTotal**100 Personnel Services – Salaries**

100 Personnel Services – Salaries				687,266.33
-----------------------------------	--	--	--	------------

Total Personnel Services – Salaries**\$687,266.33****200 Personnel Services – Employee Benefits**

210 Group Insurance – Contracted Provider				3,621.00
---	--	--	--	----------

220 Social Security Contributions				52,060.39
-----------------------------------	--	--	--	-----------

230 PSERS Retirement Contributions				230,929.06
------------------------------------	--	--	--	------------

250 Unemployment Compensation				94.00
-------------------------------	--	--	--	-------

260 Workers' Compensation				4,850.00
---------------------------	--	--	--	----------

270 Group Insurance – Self-Insurance				157,083.08
--------------------------------------	--	--	--	------------

280 Other Post-Employment Benefits (OPEB)				42,300.00
---	--	--	--	-----------

Total Personnel Services – Employee Benefits**\$490,937.53****400 Purchased Property Services**

430 Repairs and Maintenance Services				361.83
--------------------------------------	--	--	--	--------

Total Purchased Property Services**\$361.83****500 Other Purchased Services**

530 Communications				20.00
--------------------	--	--	--	-------

550 Printing and Binding				2,065.00
--------------------------	--	--	--	----------

580 Travel				1,373.65
------------	--	--	--	----------

Total Other Purchased Services**\$3,458.65****600 Supplies**

610 General Supplies				6,985.41
----------------------	--	--	--	----------

630 Food				831.40
----------	--	--	--	--------

650 Supplies & Fees – Technology Related				54,611.88
--	--	--	--	-----------

Total Supplies**\$62,428.69****800 Other Objects**

810 Dues and Fees				779.00
-------------------	--	--	--	--------

Total Other Objects**\$779.00****Total 2719 Supervision of Student Transportation Services – All Other Supervision****\$1,245,232.03**

LEA : 123464502 Lower Merion SD

Printed 11/19/2024 9:38:02 AM

Page - 56 of 70

General Fund (10)

2720 Vehicle Operation Services

ElementarySecondaryFederalTotal**100 Personnel Services – Salaries**

100 Personnel Services – Salaries				5,783,010.19
-----------------------------------	--	--	--	--------------

Total Personnel Services – Salaries**\$5,783,010.19****200 Personnel Services – Employee Benefits**

210 Group Insurance – Contracted Provider				44,898.70
---	--	--	--	-----------

220 Social Security Contributions				438,226.01
-----------------------------------	--	--	--	------------

230 PSERS Retirement Contributions				1,934,937.33
------------------------------------	--	--	--	--------------

250 Unemployment Compensation				1,119.01
-------------------------------	--	--	--	----------

260 Workers' Compensation				60,589.45
---------------------------	--	--	--	-----------

270 Group Insurance – Self-Insurance				1,942,600.91
--------------------------------------	--	--	--	--------------

280 Other Post-Employment Benefits (OPEB)				80,231.00
---	--	--	--	-----------

Total Personnel Services – Employee Benefits**\$4,502,602.41****300 Purchased Professional and Technical Services**

330 Other Professional Services				29,809.65
---------------------------------	--	--	--	-----------

Total Purchased Professional and Technical Services**\$29,809.65****400 Purchased Property Services**

430 Repairs and Maintenance Services				12,588.64
--------------------------------------	--	--	--	-----------

Total Purchased Property Services**\$12,588.64****500 Other Purchased Services**

513 Contracted Carriers				3,682,437.39
-------------------------	--	--	--	--------------

516 Student Transportation Services From the IU				102,858.52
---	--	--	--	------------

522 Automotive Liability Insurance				174,358.90
------------------------------------	--	--	--	------------

524 Other Pupil Transportation Insurance				39,627.02
--	--	--	--	-----------

530 Communications				108.85
--------------------	--	--	--	--------

580 Travel				5,806.89
------------	--	--	--	----------

Total Other Purchased Services**\$4,005,197.57****600 Supplies**

610 General Supplies				13,598.57
----------------------	--	--	--	-----------

620 Energy				302,546.93
------------	--	--	--	------------

630 Food				935.77
----------	--	--	--	--------

650 Supplies & Fees – Technology Related				8,736.15
--	--	--	--	----------

Total Supplies**\$325,817.42****800 Other Objects**

810 Dues and Fees				672.54
-------------------	--	--	--	--------

Total Other Objects**\$672.54****Total 2720 Vehicle Operation Services****\$14,659,698.42**

LEA : 123464502 Lower Merion SD

Printed 11/19/2024 9:38:02 AM

General Fund (10)

2730 Monitoring Services	<u>Elementary</u>	<u>Secondary</u>	<u>Federal</u>	<u>Total</u>
600 <u>Supplies</u>				
650 Supplies & Fees – Technology Related				1,367.72
Total Supplies				\$1,367.72
Total 2730 Monitoring Services				\$1,367.72

LEA : 123464502 Lower Merion SD

Printed 11/19/2024 9:38:02 AM

Page - 58 of 70

General Fund (10)

2740 Vehicle Servicing and Maintenance Services

ElementarySecondaryFederalTotal100 Personnel Services – Salaries

100 Personnel Services – Salaries

539,548.36

Total Personnel Services – Salaries**\$539,548.36**200 Personnel Services – Employee Benefits

210 Group Insurance – Contracted Provider

3,590.00

220 Social Security Contributions

40,317.07

230 PSERS Retirement Contributions

184,312.06

250 Unemployment Compensation

94.00

260 Workers' Compensation

4,806.00

270 Group Insurance – Self-Insurance

149,038.00

Total Personnel Services – Employee Benefits**\$382,157.13**400 Purchased Property Services

430 Repairs and Maintenance Services

227,651.79

440 Rentals

7,837.23

Total Purchased Property Services**\$235,489.02**500 Other Purchased Services

580 Travel

155.39

Total Other Purchased Services**\$155.39**600 Supplies

610 General Supplies

408,321.22

620 Energy

64,876.37

640 Books and Periodicals

17.71

650 Supplies & Fees – Technology Related

5,421.21

Total Supplies**\$478,636.51**700 Property

752 Capital Equipment – Original and Additional

10,995.00

Total Property**\$10,995.00**800 Other Objects

810 Dues and Fees

59.99

Total Other Objects**\$59.99****Total 2740 Vehicle Servicing and Maintenance Services****\$1,647,041.40**

LEA : 123464502 Lower Merion SD

Printed 11/19/2024 9:38:02 AM

Page - 59 of 70

General Fund (10)**2750 Nonpublic Transportation****Elementary****Secondary****Federal****Total****100 Personnel Services – Salaries**

100 Personnel Services – Salaries

784,111.07

Total Personnel Services – Salaries**\$784,111.07****200 Personnel Services – Employee Benefits**

210 Group Insurance – Contracted Provider

6,087.76

220 Social Security Contributions

59,418.51

230 PSERS Retirement Contributions

262,355.72

250 Unemployment Compensation

151.72

260 Workers' Compensation

8,215.25

270 Group Insurance – Self-Insurance

263,394.81

280 Other Post-Employment Benefits (OPEB)

10,878.42

Total Personnel Services – Employee Benefits**\$610,502.19****300 Purchased Professional and Technical Services**

330 Other Professional Services

4,041.85

Total Purchased Professional and Technical Services**\$4,041.85****400 Purchased Property Services**

430 Repairs and Maintenance Services

1,706.88

Total Purchased Property Services**\$1,706.88****500 Other Purchased Services**

513 Contracted Carriers

499,297.05

516 Student Transportation Services From the IU

13,946.46

522 Automotive Liability Insurance

23,641.10

524 Other Pupil Transportation Insurance

5,372.98

530 Communications

14.76

580 Travel

787.35

Total Other Purchased Services**\$543,059.70****600 Supplies**

610 General Supplies

1,843.81

620 Energy

41,021.96

630 Food

126.88

650 Supplies & Fees – Technology Related

1,184.52

Total Supplies**\$44,177.17****800 Other Objects**

810 Dues and Fees

91.19

Total Other Objects**\$91.19****Total 2750 Nonpublic Transportation****\$1,987,690.05**

LEA : 123464502 Lower Merion SD

Printed 11/19/2024 9:38:02 AM

General Fund (10)

2790 Other Student Transportation Services	<u>Elementary</u>	<u>Secondary</u>	<u>Federal</u>	<u>Total</u>
100 <u>Personnel Services – Salaries</u>				
100 Personnel Services – Salaries				32,504.65
Total Personnel Services – Salaries				\$32,504.65
200 <u>Personnel Services – Employee Benefits</u>				
220 Social Security Contributions				2,486.64
230 PSERS Retirement Contributions				11,051.58
Total Personnel Services – Employee Benefits				\$13,538.22
Total 2790 Other Student Transportation Services				\$46,042.87

LEA : 123464502 Lower Merion SD

Printed 11/19/2024 9:38:02 AM

Page - 61 of 70

General Fund (10)

2800 Support Services – Central

ElementarySecondaryFederalTotal100 Personnel Services – Salaries

100 Personnel Services – Salaries				3,103,778.45
-----------------------------------	--	--	--	--------------

Total Personnel Services – Salaries**\$3,103,778.45**200 Personnel Services – Employee Benefits

210 Group Insurance – Contracted Provider				12,559.00
---	--	--	--	-----------

220 Social Security Contributions				236,820.57
-----------------------------------	--	--	--	------------

230 PSERS Retirement Contributions				1,054,120.08
------------------------------------	--	--	--	--------------

240 Tuition Reimbursement				42,182.77
---------------------------	--	--	--	-----------

250 Unemployment Compensation				327.00
-------------------------------	--	--	--	--------

260 Workers' Compensation				16,821.00
---------------------------	--	--	--	-----------

270 Group Insurance – Self-Insurance				580,165.30
--------------------------------------	--	--	--	------------

280 Other Post-Employment Benefits (OPEB)				30,420.00
---	--	--	--	-----------

299 All Other Employee Benefits				28,050.00
---------------------------------	--	--	--	-----------

Total Personnel Services – Employee Benefits**\$2,001,465.72**300 Purchased Professional and Technical Services

329 Professional Educational Services – Other				27,769.14
---	--	--	--	-----------

330 Other Professional Services				90,527.04
---------------------------------	--	--	--	-----------

340 Technical Services				679,711.23
------------------------	--	--	--	------------

360 Employee Training and Development Services				142,931.83
--	--	--	--	------------

Total Purchased Professional and Technical Services**\$940,939.24**400 Purchased Property Services

430 Repairs and Maintenance Services				332,123.18
--------------------------------------	--	--	--	------------

Total Purchased Property Services**\$332,123.18**500 Other Purchased Services

520 Insurance – General				135,559.00
-------------------------	--	--	--	------------

530 Communications				185,608.65
--------------------	--	--	--	------------

549 Other Advertising/Public Relations				47,761.13
--	--	--	--	-----------

580 Travel				7,995.88
------------	--	--	--	----------

Total Other Purchased Services**\$376,924.66**600 Supplies

610 General Supplies				34,497.78
----------------------	--	--	--	-----------

630 Food				296.59
----------	--	--	--	--------

640 Books and Periodicals				1,232.49
---------------------------	--	--	--	----------

650 Supplies & Fees – Technology Related				2,354,104.17
--	--	--	--	--------------

Total Supplies**\$2,390,131.03**800 Other Objects

810 Dues and Fees			50.00	7,591.05
-------------------	--	--	-------	----------

Total Other Objects**\$50.00 \$7,591.05****Total 2800 Support Services – Central****\$50.00 \$9,152,953.33**

LEA : 123464502 Lower Merion SD

Printed 11/19/2024 9:38:02 AM

Page - 62 of 70

General Fund (10)

2810 Planning, Research, Development and Evaluation Services

ElementarySecondaryFederalTotal**100 Personnel Services – Salaries**

100 Personnel Services – Salaries

71,070.00

Total Personnel Services – Salaries**\$71,070.00****200 Personnel Services – Employee Benefits**

220 Social Security Contributions

6,239.55

230 PSERS Retirement Contributions

24,163.89

270 Group Insurance – Self-Insurance

10,139.92

Total Personnel Services – Employee Benefits**\$40,543.36****300 Purchased Professional and Technical Services**

329 Professional Educational Services – Other

27,769.14

330 Other Professional Services

45,000.00

Total Purchased Professional and Technical Services**\$72,769.14****500 Other Purchased Services**

520 Insurance – General

(760.00)

Total Other Purchased Services**(\$760.00)****600 Supplies**

610 General Supplies

19,015.55

640 Books and Periodicals

901.47

650 Supplies & Fees – Technology Related

18,218.96

Total Supplies**\$38,135.98****Total 2810 Planning, Research, Development and Evaluation Services****\$221,758.48**

LEA : 123464502 Lower Merion SD

Printed 11/19/2024 9:38:02 AM

Page - 63 of 70

General Fund (10)

2830 Staff Services

	<u>Elementary</u>	<u>Secondary</u>	<u>Federal</u>	<u>Total</u>
100 Personnel Services – Salaries				
100 Personnel Services – Salaries				677,030.90
Total Personnel Services – Salaries				\$677,030.90
200 Personnel Services – Employee Benefits				
210 Group Insurance – Contracted Provider				2,473.00
220 Social Security Contributions				54,739.32
230 PSERS Retirement Contributions				229,629.41
240 Tuition Reimbursement				42,182.77
250 Unemployment Compensation				64.00
260 Workers' Compensation				3,314.00
270 Group Insurance – Self-Insurance				138,277.64
280 Other Post-Employment Benefits (OPEB)				30,420.00
299 All Other Employee Benefits				28,050.00
Total Personnel Services – Employee Benefits				\$529,150.14
300 Purchased Professional and Technical Services				
330 Other Professional Services				45,527.04
360 Employee Training and Development Services				142,931.83
Total Purchased Professional and Technical Services				\$188,458.87
400 Purchased Property Services				
430 Repairs and Maintenance Services				11.09
Total Purchased Property Services				\$11.09
500 Other Purchased Services				
530 Communications				686.00
549 Other Advertising/Public Relations				47,761.13
580 Travel				5,654.25
Total Other Purchased Services				\$54,101.38
600 Supplies				
610 General Supplies				8,049.33
630 Food				241.59
650 Supplies & Fees – Technology Related				195,877.74
Total Supplies				\$204,168.66
800 Other Objects				
810 Dues and Fees			50.00	7,258.94
Total Other Objects			\$50.00	\$7,258.94
Total 2830 Staff Services			\$50.00	\$1,660,179.98

LEA : 123464502 Lower Merion SD

Printed 11/19/2024 9:38:02 AM

General Fund (10)

2831 Supervision of Staff Services	<u>Elementary</u>	<u>Secondary</u>	<u>Federal</u>	<u>Total</u>
100 <u>Personnel Services – Salaries</u>				
100 Personnel Services – Salaries				149,940.00
Total Personnel Services – Salaries				\$149,940.00
200 <u>Personnel Services – Employee Benefits</u>				
210 Group Insurance – Contracted Provider				472.00
220 Social Security Contributions				11,130.19
230 PSERS Retirement Contributions				50,979.55
250 Unemployment Compensation				12.00
260 Workers' Compensation				633.00
270 Group Insurance – Self-Insurance				21,778.58
Total Personnel Services – Employee Benefits				\$85,005.32
Total 2831 Supervision of Staff Services				\$234,945.32

LEA : 123464502 Lower Merion SD

Printed 11/19/2024 9:38:02 AM

Page - 65 of 70

General Fund (10)

2832 Recruitment and Placement Services

	<u>Elementary</u>	<u>Secondary</u>	<u>Federal</u>	<u>Total</u>
100 Personnel Services – Salaries				
100 Personnel Services – Salaries				522,448.33
Total Personnel Services – Salaries				\$522,448.33
200 Personnel Services – Employee Benefits				
210 Group Insurance – Contracted Provider				2,001.00
220 Social Security Contributions				41,606.14
230 PSERS Retirement Contributions				177,084.71
250 Unemployment Compensation				52.00
260 Workers' Compensation				2,681.00
270 Group Insurance – Self-Insurance				116,499.06
280 Other Post-Employment Benefits (OPEB)				30,420.00
299 All Other Employee Benefits				28,050.00
Total Personnel Services – Employee Benefits				\$398,393.91
300 Purchased Professional and Technical Services				
330 Other Professional Services				30,089.54
Total Purchased Professional and Technical Services				\$30,089.54
400 Purchased Property Services				
430 Repairs and Maintenance Services				11.09
Total Purchased Property Services				\$11.09
500 Other Purchased Services				
530 Communications				686.00
549 Other Advertising/Public Relations				47,761.13
580 Travel				20.00
Total Other Purchased Services				\$48,467.13
600 Supplies				
610 General Supplies				8,049.33
630 Food				241.59
650 Supplies & Fees – Technology Related				195,577.74
Total Supplies				\$203,868.66
800 Other Objects				
810 Dues and Fees				4,272.00
Total Other Objects				\$4,272.00
Total 2832 Recruitment and Placement Services				\$1,207,550.66

LEA : 123464502 Lower Merion SD

Printed 11/19/2024 9:38:02 AM

Page - 66 of 70

General Fund (10)

2834 Staff Development Services – Non-Instructional, Certified Staff Only

	<u>Elementary</u>	<u>Secondary</u>	<u>Federal</u>	<u>Total</u>
100 Personnel Services – Salaries				
100 Personnel Services – Salaries				184.14
Total Personnel Services – Salaries				\$184.14
200 Personnel Services – Employee Benefits				
220 Social Security Contributions				1,688.95
230 PSERS Retirement Contributions				62.60
240 Tuition Reimbursement				26,034.10
Total Personnel Services – Employee Benefits				\$27,785.65
300 Purchased Professional and Technical Services				
330 Other Professional Services				15,437.50
360 Employee Training and Development Services				57,081.41
Total Purchased Professional and Technical Services				\$72,518.91
500 Other Purchased Services				
580 Travel				1,094.56
Total Other Purchased Services				\$1,094.56
600 Supplies				
650 Supplies & Fees – Technology Related				300.00
Total Supplies				\$300.00
800 Other Objects				
810 Dues and Fees			50.00	2,756.94
Total Other Objects			\$50.00	\$2,756.94
Total 2834 Staff Development Services – Non-Instructional, Certified Staff Only			\$50.00	\$104,640.20

LEA : 123464502 Lower Merion SD

Printed 11/19/2024 9:38:02 AM

Page - 67 of 70

General Fund (10)

2836 Staff Development Services – Non-Instructional, Non-Certified Staff Only

ElementarySecondaryFederalTotal100 Personnel Services – Salaries

100 Personnel Services – Salaries

4,458.43

Total Personnel Services – Salaries**\$4,458.43**200 Personnel Services – Employee Benefits

220 Social Security Contributions

314.04

230 PSERS Retirement Contributions

1,502.55

240 Tuition Reimbursement

16,148.67

Total Personnel Services – Employee Benefits**\$17,965.26**300 Purchased Professional and Technical Services

360 Employee Training and Development Services

85,850.42

Total Purchased Professional and Technical Services**\$85,850.42**500 Other Purchased Services

580 Travel

4,539.69

Total Other Purchased Services**\$4,539.69**800 Other Objects

810 Dues and Fees

230.00

Total Other Objects**\$230.00****Total 2836 Staff Development Services – Non-Instructional, Non-Certified Staff Only****\$113,043.80**

LEA : 123464502 Lower Merion SD

Printed 11/19/2024 9:38:02 AM

Page - 68 of 70

General Fund (10)

2840 Data Processing Services

	<u>Elementary</u>	<u>Secondary</u>	<u>Federal</u>	<u>Total</u>
100 Personnel Services – Salaries				
100 Personnel Services – Salaries				2,355,677.55
Total Personnel Services – Salaries				\$2,355,677.55
200 Personnel Services – Employee Benefits				
210 Group Insurance – Contracted Provider				10,086.00
220 Social Security Contributions				175,841.70
230 PSERS Retirement Contributions				800,326.78
250 Unemployment Compensation				263.00
260 Workers' Compensation				13,507.00
270 Group Insurance – Self-Insurance				431,747.74
Total Personnel Services – Employee Benefits				\$1,431,772.22
300 Purchased Professional and Technical Services				
340 Technical Services				679,711.23
Total Purchased Professional and Technical Services				\$679,711.23
400 Purchased Property Services				
430 Repairs and Maintenance Services				332,112.09
Total Purchased Property Services				\$332,112.09
500 Other Purchased Services				
520 Insurance – General				136,319.00
530 Communications				184,922.65
580 Travel				2,341.63
Total Other Purchased Services				\$323,583.28
600 Supplies				
610 General Supplies				7,432.90
630 Food				55.00
640 Books and Periodicals				331.02
650 Supplies & Fees – Technology Related				2,140,007.47
Total Supplies				\$2,147,826.39
800 Other Objects				
810 Dues and Fees				332.11
Total Other Objects				\$332.11
Total 2840 Data Processing Services				\$7,271,014.87

LEA : 123464502 Lower Merion SD

Printed 11/19/2024 9:38:02 AM

Page - 69 of 70

General Fund (10)

2900 Other Support Services

ElementarySecondaryFederalTotal100 Personnel Services – Salaries

100 Personnel Services – Salaries

469,264.43

Total Personnel Services – Salaries**\$469,264.43**200 Personnel Services – Employee Benefits

220 Social Security Contributions

35,806.10

230 PSERS Retirement Contributions

136,007.28

Total Personnel Services – Employee Benefits**\$171,813.38**500 Other Purchased Services

595 IU Payments By Withholding

141,347.79

596 Direct Payments To Intermediate Units

9,508.79

Total Other Purchased Services**\$150,856.58****Total 2900 Other Support Services****\$791,934.39**

LEA : 123464502 Lower Merion SD

Printed 11/19/2024 9:38:02 AM

General Fund (10)

2910 Support Services Not Listed Elsewhere In the 2000 Series

	<u>Elementary</u>	<u>Secondary</u>	<u>Federal</u>	<u>Total</u>
100 <u>Personnel Services – Salaries</u>				
100 Personnel Services – Salaries				469,264.43
Total Personnel Services – Salaries				\$469,264.43
200 <u>Personnel Services – Employee Benefits</u>				
220 Social Security Contributions				35,806.10
230 PSERS Retirement Contributions				136,007.28
Total Personnel Services – Employee Benefits				\$171,813.38
500 <u>Other Purchased Services</u>				
595 IU Payments By Withholding				141,347.79
596 Direct Payments To Intermediate Units				9,508.79
Total Other Purchased Services				\$150,856.58
Total 2910 Support Services Not Listed Elsewhere In the 2000 Series				\$791,934.39

LEA : 123464502 Lower Merion SD

Printed 11/19/2024 9:38:13 AM

Page - 1 of 3

General Fund (10)**3000 Operation of Non-Instructional Services****Total****100 Personnel Services – Salaries**

100 Personnel Services – Salaries

3,836,873.77

Total Personnel Services – Salaries**\$3,836,873.77****200 Personnel Services – Employee Benefits**

210 Group Insurance – Contracted Provider

1,573.00

220 Social Security Contributions

288,633.92

230 PSERS Retirement Contributions

1,261,524.57

250 Unemployment Compensation

41.00

260 Workers' Compensation

2,106.00

270 Group Insurance – Self-Insurance

67,632.60

Total Personnel Services – Employee Benefits**\$1,621,511.09****300 Purchased Professional and Technical Services**

330 Other Professional Services

689,719.54

Total Purchased Professional and Technical Services**\$689,719.54****400 Purchased Property Services**

430 Repairs and Maintenance Services

12,325.02

440 Rentals

96,284.49

Total Purchased Property Services**\$108,609.51****500 Other Purchased Services**

510 Student Transportation Services

241,806.96

520 Insurance – General

105,244.00

580 Travel

27,845.09

Total Other Purchased Services**\$374,896.05****600 Supplies**

610 General Supplies

414,919.83

630 Food

3,881.24

650 Supplies & Fees – Technology Related

37,448.47

Total Supplies**\$456,249.54****800 Other Objects**

810 Dues and Fees

58,628.39

Total Other Objects**\$58,628.39****Total 3000 Operation of Non-Instructional Services****\$7,146,487.89**

LEA : 123464502 Lower Merion SD

Printed 11/19/2024 9:38:13 AM

Page - 2 of 3

General Fund (10)

3200 Student Activities

ElementarySecondaryFederalTotal100 Personnel Services – Salaries

100 Personnel Services – Salaries

3,836,873.77

Total Personnel Services – Salaries**\$3,836,873.77**200 Personnel Services – Employee Benefits

210 Group Insurance – Contracted Provider

1,573.00

220 Social Security Contributions

288,633.92

230 PSERS Retirement Contributions

1,261,524.57

250 Unemployment Compensation

41.00

260 Workers' Compensation

2,106.00

270 Group Insurance – Self-Insurance

67,632.60

Total Personnel Services – Employee Benefits**\$1,621,511.09**300 Purchased Professional and Technical Services

330 Other Professional Services

429,413.24

Total Purchased Professional and Technical Services**\$429,413.24**400 Purchased Property Services

430 Repairs and Maintenance Services

12,325.02

440 Rentals

96,284.49

Total Purchased Property Services**\$108,609.51**500 Other Purchased Services

510 Student Transportation Services

241,806.96

520 Insurance – General

105,244.00

580 Travel

27,845.09

Total Other Purchased Services**\$374,896.05**600 Supplies

610 General Supplies

404,295.19

630 Food

2,981.24

650 Supplies & Fees – Technology Related

37,448.47

Total Supplies**\$444,724.90**800 Other Objects

810 Dues and Fees

58,628.39

Total Other Objects**\$58,628.39****Total 3200 Student Activities****\$6,874,656.95**

General Fund (10)

3300 Community Services	Elementary	Secondary	Federal	Total
300 <u>Purchased Professional and Technical Services</u>				
330 Other Professional Services				260,306.30
Total Purchased Professional and Technical Services				\$260,306.30
600 <u>Supplies</u>				
610 General Supplies			1,981.14	10,624.64
630 Food				900.00
Total Supplies			\$1,981.14	\$11,524.64
Total 3300 Community Services			\$1,981.14	\$271,830.94

LEA : 123464502 Lower Merion SD

Printed 11/19/2024 9:38:20 AM

General Fund (10)

5000 Other Expenditures and Financing Uses

Total

800 Other Objects

830 Interest	7,472,050.37
880 Refunds of Prior Years' Receipts	97,050.00

Total Other Objects	\$7,569,100.37
---------------------	----------------

900 Other Uses of Funds

910 Redemption of Principal	24,678,533.26
932 Capital Reserve Fund Transfers Applicable To Fund 32	2,900,000.00

Total Other Uses of Funds	\$27,578,533.26
---------------------------	-----------------

Total 5000 Other Expenditures and Financing Uses	\$35,147,633.63
--	-----------------

LEA : 123464502 Lower Merion SD

Printed 11/19/2024 9:38:20 AM

General Fund (10)

5100 Debt Service / Other Expenditures and Financing Uses	<u>Elementary</u>	<u>Secondary</u>	<u>Federal</u>	<u>Total</u>
800 <u>Other Objects</u>				
830 Interest				7,472,050.37
880 Refunds of Prior Years' Receipts				97,050.00
Total Other Objects				\$7,569,100.37
900 <u>Other Uses of Funds</u>				
910 Redemption of Principal				24,678,533.26
Total Other Uses of Funds				\$24,678,533.26
Total 5100 Debt Service / Other Expenditures and Financing Uses				\$32,247,633.63

General Fund (10)

5110 Debt Service	Elementary	Secondary	Federal	Total
800 Other Objects				
830 Interest				7,463,528.84
Total Other Objects				\$7,463,528.84
900 Other Uses of Funds				
910 Redemption of Principal				24,275,000.00
Total Other Uses of Funds				\$24,275,000.00
Total 5110 Debt Service				\$31,738,528.84

LEA : 123464502 Lower Merion SD

Printed 11/19/2024 9:38:20 AM

General Fund (10)

5130 Refund of Prior Year Revenues / Receipts	<u>Elementary</u>	<u>Secondary</u>	<u>Federal</u>	<u>Total</u>
800 <u>Other Objects</u>				
880 Refunds of Prior Years' Receipts				97,050.00
Total Other Objects				\$97,050.00
Total 5130 Refund of Prior Year Revenues / Receipts				\$97,050.00

LEA : 123464502 Lower Merion SD

Printed 11/19/2024 9:38:20 AM

General Fund (10)

5140 Leases and Other Right-to-Use Arrangements	<u>Elementary</u>	<u>Secondary</u>	<u>Federal</u>	<u>Total</u>
800 <u>Other Objects</u>				
830 Interest				8,521.53
Total Other Objects				\$8,521.53
900 <u>Other Uses of Funds</u>				
910 Redemption of Principal				403,533.26
Total Other Uses of Funds				\$403,533.26
Total 5140 Leases and Other Right-to-Use Arrangements				\$412,054.79

LEA : 123464502 Lower Merion SD

Printed 11/19/2024 9:38:20 AM

General Fund (10)

5200 Interfund Transfers – Out

<u>Elementary</u>	<u>Secondary</u>	<u>Federal</u>	<u>Total</u>
-------------------	------------------	----------------	--------------

900 Other Uses of Funds

932 Capital Reserve Fund Transfers Applicable To Fund 32			2,900,000.00
--	--	--	--------------

Total Other Uses of Funds			\$2,900,000.00
---------------------------	--	--	----------------

Total 5200 Interfund Transfers – Out			\$2,900,000.00
--------------------------------------	--	--	----------------

LEA : 123464502 Lower Merion SD

Printed 11/19/2024 9:38:20 AM

General Fund (10)

5230 Capital Projects Fund Transfers

<u>Elementary</u>	<u>Secondary</u>	<u>Federal</u>	<u>Total</u>
-------------------	------------------	----------------	--------------

900 Other Uses of Funds

932 Capital Reserve Fund Transfers Applicable To Fund 32			2,900,000.00
--	--	--	--------------

Total Other Uses of Funds			\$2,900,000.00
----------------------------------	--	--	-----------------------

Total 5230 Capital Projects Fund Transfers			\$2,900,000.00
---	--	--	-----------------------

LEA : 123464502 Lower Merion SD

Printed 11/19/2024 9:38:07 AM

Capital Reserve Fund - \$ 1431 (32)

2000 Support Services	Total
400 <u>Purchased Property Services</u>	
450 Construction Services	6,010,667.07
Total Purchased Property Services	\$6,010,667.07
700 <u>Property</u>	
762 Capitalized Equipment - Replacement	811,687.02
Total Property	\$811,687.02
Total 2000 Support Services	\$6,822,354.09

LEA : 123464502 Lower Merion SD

Printed 11/19/2024 9:38:07 AM

Capital Reserve Fund - § 1431 (32)

2600 Operation and Maintenance of Plant Services	<u>Elementary</u>	<u>Secondary</u>	<u>Federal</u>	<u>Total</u>
400 <u>Purchased Property Services</u>				
450 Construction Services				6,010,667.07
Total Purchased Property Services				\$6,010,667.07
700 <u>Property</u>				
762 Capitalized Equipment - Replacement				120,163.02
Total Property				\$120,163.02
Total 2600 Operation and Maintenance of Plant Services				\$6,130,830.09

LEA : 123464502 Lower Merion SD

Printed 11/19/2024 9:38:07 AM

Capital Reserve Fund - § 1431 (32)

2620 Operation of Buildings Services	Elementary	Secondary	Federal	Total
400 Purchased Property Services				
450 Construction Services				6,010,667.07
Total Purchased Property Services				\$6,010,667.07
700 Property				
762 Capitalized Equipment - Replacement				120,163.02
Total Property				\$120,163.02
Total 2620 Operation of Buildings Services				\$6,130,830.09

LEA : 123464502 Lower Merion SD

Printed 11/19/2024 9:38:07 AM

Capital Reserve Fund - § 1431 (32)

2700 Student Transportation Services	<u>Elementary</u>	<u>Secondary</u>	<u>Federal</u>	<u>Total</u>
700 <u>Property</u>				
762 Capitalized Equipment - Replacement				691,524.00
Total Property				\$691,524.00
Total 2700 Student Transportation Services				\$691,524.00

LEA : 123464502 Lower Merion SD

Printed 11/19/2024 9:38:07 AM

Capital Reserve Fund - \$ 1431 (32)

2720 Vehicle Operation Services

	<u>Elementary</u>	<u>Secondary</u>	<u>Federal</u>	<u>Total</u>
700 <u>Property</u>				
762 Capitalized Equipment - Replacement				691,524.00
Total Property				\$691,524.00
Total 2720 Vehicle Operation Services				\$691,524.00

Other Capital Projects Fund (39)

		Total
2000 Support Services		
300 <u>Purchased Professional and Technical Services</u>		
330 Other Professional Services		11,260.00
340 Technical Services		161,209.53
Total Purchased Professional and Technical Services		\$172,469.53
400 <u>Purchased Property Services</u>		
450 Construction Services		165,213.47
Total Purchased Property Services		\$165,213.47
700 <u>Property</u>		
752 Capital Equipment – Original and Additional		153,357.99
Total Property		\$153,357.99
Total 2000 Support Services		\$491,040.99

LEA : 123464502 Lower Merion SD

Printed 11/19/2024 9:38:10 AM

Other Capital Projects Fund (39)

2300 Support Services – Administration

300 Purchased Professional and Technical Services

	<u>Elementary</u>	<u>Secondary</u>	<u>Federal</u>	<u>Total</u>
330 Other Professional Services				9,492.50
Total Purchased Professional and Technical Services				\$9,492.50
Total 2300 Support Services – Administration				\$9,492.50

Other Capital Projects Fund (39)

2350 Legal and Accounting Services	<u>Elementary</u>	<u>Secondary</u>	<u>Federal</u>	<u>Total</u>
300 <u>Purchased Professional and Technical Services</u>				
330 Other Professional Services				9,492.50
Total Purchased Professional and Technical Services				\$9,492.50
Total 2350 Legal and Accounting Services				\$9,492.50

Other Capital Projects Fund (39)

2600 Operation and Maintenance of Plant Services	<u>Elementary</u>	<u>Secondary</u>	<u>Federal</u>	<u>Total</u>
300 <u>Purchased Professional and Technical Services</u>				
330 Other Professional Services				1,767.50
Total Purchased Professional and Technical Services				\$1,767.50
400 <u>Purchased Property Services</u>				
450 Construction Services				165,213.47
Total Purchased Property Services				\$165,213.47
700 <u>Property</u>				
752 Capital Equipment – Original and Additional				153,357.99
Total Property				\$153,357.99
Total 2600 Operation and Maintenance of Plant Services				\$320,338.96

Other Capital Projects Fund (39)

2620 Operation of Buildings Services	<u>Elementary</u>	<u>Secondary</u>	<u>Federal</u>	<u>Total</u>
300 <u>Purchased Professional and Technical Services</u>				
330 Other Professional Services				1,767.50
Total Purchased Professional and Technical Services				\$1,767.50
400 <u>Purchased Property Services</u>				
450 Construction Services				165,213.47
Total Purchased Property Services				\$165,213.47
Total 2620 Operation of Buildings Services				\$166,980.97

LEA : 123464502 Lower Merion SD

Printed 11/19/2024 9:38:10 AM

Other Capital Projects Fund (39)

2630 Care and Upkeep of Grounds Services	<u>Elementary</u>	<u>Secondary</u>	<u>Federal</u>	<u>Total</u>
700 <u>Property</u>				
752 Capital Equipment – Original and Additional				153,357.99
Total Property				\$153,357.99
Total 2630 Care and Upkeep of Grounds Services				\$153,357.99

LEA : 123464502 Lower Merion SD

Printed 11/19/2024 9:38:10 AM

Other Capital Projects Fund (39)

2800 Support Services – Central

300 Purchased Professional and Technical Services

	<u>Elementary</u>	<u>Secondary</u>	<u>Federal</u>	<u>Total</u>
340 Technical Services				161,209.53
Total Purchased Professional and Technical Services				\$161,209.53
Total 2800 Support Services – Central				\$161,209.53

LEA : 123464502 Lower Merion SD

Printed 11/19/2024 9:38:10 AM

Other Capital Projects Fund (39)

2840 Data Processing Services

300 Purchased Professional and Technical Services

	<u>Elementary</u>	<u>Secondary</u>	<u>Federal</u>	<u>Total</u>
340 Technical Services				161,209.53
Total Purchased Professional and Technical Services				\$161,209.53
Total 2840 Data Processing Services				\$161,209.53

Other Capital Projects Fund (39)

4000 Facilities Acquisition, Construction and Improvement Services	Total
300 <u>Purchased Professional and Technical Services</u>	
330 Other Professional Services	54,726.04
Total Purchased Professional and Technical Services	\$54,726.04
400 <u>Purchased Property Services</u>	
450 Construction Services	5,381,507.44
Total Purchased Property Services	\$5,381,507.44
Total 4000 Facilities Acquisition, Construction and Improvement Services	\$5,436,233.48

LEA : 123464502 Lower Merion SD

Printed 11/19/2024 9:38:17 AM

Other Capital Projects Fund (39)

4400 Architecture and Engineering Services / Educational Specifications – Improvements	<u>Elementary</u>	<u>Secondary</u>	<u>Federal</u>	<u>Total</u>
300 <u>Purchased Professional and Technical Services</u>				
330 Other Professional Services				46,874.04
Total Purchased Professional and Technical Services				\$46,874.04
Total 4400 Architecture and Engineering Services / Educational Specifications – Improvements				\$46,874.04

LEA : 123464502 Lower Merion SD

Printed 11/19/2024 9:38:17 AM

Other Capital Projects Fund (39)

4500 Building Acquisition and Construction Services – Original and Additional	<u>Elementary</u>	<u>Secondary</u>	<u>Federal</u>	<u>Total</u>
300 <u>Purchased Professional and Technical Services</u>				
330 Other Professional Services				7,852.00
Total Purchased Professional and Technical Services				\$7,852.00
400 <u>Purchased Property Services</u>				
450 Construction Services				5,381,507.44
Total Purchased Property Services				\$5,381,507.44
Total 4500 Building Acquisition and Construction Services – Original and Additional				\$5,389,359.44

	<u>General Fund(10)</u>	<u>Student Sponsored Activity Fund(21)</u>	<u>Public Purpose Trust(27)</u>	<u>Other Compt Approved (28)</u>	<u>Athletic / Activity(29)</u>
1000 Instruction					
1100 Regular Programs - Elementary / Secondary	121,045,821.03				
1200 Special Programs - Elementary / Secondary	57,781,523.47				
1300 Vocational Education	943,208.38				
1400 Other Instructional Programs - Elementary / Secondary	1,116,938.90				
1500 Nonpublic School Programs	24,204.56				
Total Instruction	\$180,911,696.34				
2000 Support Services					
2100 Support Services - Students	11,105,154.95				
2200 Support Services - Instructional Staff	7,491,229.00				
2300 Support Services - Administration	18,134,465.05				
2400 Support Services - Pupil Health	4,631,105.72				
2500 Support Services - Business	1,413,391.88				
2600 Operation and Maintenance of Plant Services	22,446,452.27				
2700 Student Transportation Services	19,938,507.57				
2800 Support Services - Central	9,152,953.33				
2900 Other Support Services	791,934.39				
Total Support Services	\$95,105,194.16				
3000 Operation of Non-Instructional Services					
3200 Student Activities	6,874,656.95				
3300 Community Services	271,830.94				
Total Operation of Non-Instructional Services	\$7,146,487.89				
4000 Facilities Acquisition, Construction and Improvement Services					
4400 Architecture and Engineering Services / Educational Specifications - Improvements					
4500 Building Acquisition and Construction Services - Original and Additional					
Total Facilities Acquisition, Construction and Improvement Services					
5000 Other Expenditures and Financing Uses					
5100 Debt Service / Other Expenditures and Financing Uses	32,247,633.63				
5200 Interfund Transfers - Out	2,900,000.00				
Total Other Expenditures and Financing Uses	\$35,147,633.63				
TOTAL ACTUAL EXPENDITURES & OTHER FINANCING USES	\$318,311,012.02				

LEA : 123464502 Lower Merion SD

Printed 11/19/2024 9:38:23 AM

Page - 2 of 3

	<u>Capital Reserve (690. 1850)(31)</u>	<u>Capital Reserve (1431)(32)</u>	<u>Other Capital Projects Fund(39)</u>	<u>Debt Service(40)</u>	<u>Permanent(90)</u>
1000 Instruction					
1100 Regular Programs - Elementary / Secondary					
1200 Special Programs - Elementary / Secondary					
1300 Vocational Education					
1400 Other Instructional Programs - Elementary / Secondary					
1500 Nonpublic School Programs					
Total Instruction					
2000 Support Services					
2100 Support Services - Students					
2200 Support Services - Instructional Staff					
2300 Support Services - Administration			9,492.50		
2400 Support Services - Pupil Health					
2500 Support Services - Business					
2600 Operation and Maintenance of Plant Services		6,130,830.09	320,338.96		
2700 Student Transportation Services		691,524.00			
2800 Support Services - Central			161,209.53		
2900 Other Support Services					
Total Support Services		\$6,822,354.09	\$491,040.99		
3000 Operation of Non-Instructional Services					
3200 Student Activities					
3300 Community Services					
Total Operation of Non-Instructional Services					
4000 Facilities Acquisition, Construction and Improvement Services					
4400 Architecture and Engineering Services / Educational Specifications - Improvements			46,874.04		
4500 Building Acquisition and Construction Services - Original and Additional			5,389,359.44		
Total Facilities Acquisition, Construction and Improvement Services			\$5,436,233.48		
5000 Other Expenditures and Financing Uses					
5100 Debt Service / Other Expenditures and Financing Uses					
5200 Interfund Transfers - Out					
Total Other Expenditures and Financing Uses					
TOTAL ACTUAL EXPENDITURES & OTHER FINANCING USES		\$6,822,354.09	\$5,927,274.47		

	<u>Total</u>
1000 Instruction	
1100 Regular Programs - Elementary / Secondary	121,045,821.03
1200 Special Programs - Elementary / Secondary	57,781,523.47
1300 Vocational Education	943,208.38
1400 Other Instructional Programs - Elementary / Secondary	1,116,938.90
1500 Nonpublic School Programs	24,204.56
Total Instruction	\$180,911,696.34
2000 Support Services	
2100 Support Services - Students	11,105,154.95
2200 Support Services - Instructional Staff	7,491,229.00
2300 Support Services - Administration	18,143,957.55
2400 Support Services - Pupil Health	4,631,105.72
2500 Support Services - Business	1,413,391.88
2600 Operation and Maintenance of Plant Services	28,897,621.32
2700 Student Transportation Services	20,630,031.57
2800 Support Services - Central	9,314,162.86
2900 Other Support Services	791,934.39
Total Support Services	\$102,418,589.24
3000 Operation of Non-Instructional Services	
3200 Student Activities	6,874,656.95
3300 Community Services	271,830.94
Total Operation of Non-Instructional Services	\$7,146,487.89
4000 Facilities Acquisition, Construction and Improvement Services	
4400 Architecture and Engineering Services / Educational Specifications - Improvements	46,874.04
4500 Building Acquisition and Construction Services - Original and Additional	5,389,359.44
Total Facilities Acquisition, Construction and Improvement Services	\$5,436,233.48
5000 Other Expenditures and Financing Uses	
5100 Debt Service / Other Expenditures and Financing Uses	32,247,633.63
5200 Interfund Transfers - Out	2,900,000.00
Total Other Expenditures and Financing Uses	\$35,147,633.63
TOTAL ACTUAL EXPENDITURES & OTHER FINANCING USES	\$331,060,640.58

LEA : 123464502 Lower Merion SD

Printed 11/19/2024 9:38:34 AM

PSERS Salary Data (Salary Data should relate to the General Fund only)

Amount Description	Amount
Total Salary Base for salaries subject to PSERS withholding	147,769,041.79
Total Federally Funded salaries subject to PSERS withholding	261,122.12

Title I Expenditure Data

Amount Description	Amount
Expenditures Funded with Current Title I Funds	395,519.00
Total Title I Expenditure Data	\$395,519.00

Title IV Revenue Data

Amount Description	Amount
Revenue from Title IV-A-1: Student Support and Academic Enrichment Grants	22,322.00

1 .	<u>Current Special Education Expenditures within Function 1000</u> See list of exclusions in the note below.	49,616,554.18
2 .	<u>Current Special Education Expenditures within Function 2000</u> See list of exclusions in the note below.	23,307,594.28
2A.	<u>Current Special Education Expenditures within Sub-Function 2100</u> This data should also be included in line 2 above. See list of exclusions in the note below.	3,322,390.56
2B.	<u>Current Special Education Expenditures within Sub-Function 2200</u> This data should also be included in line 2 above. See list of exclusions in the note below.	2,332,456.22
2C.	<u>Current Special Education Expenditures within Sub-Function 2700</u> This data should also be included in line 2 above. See list of exclusions in the note below.	5,385,245.26
3.	<u>Current Special Education Expenditures within Sub-Function 3100</u> See list of exclusions in the note below.	936,201.19
4.	<u>Current Special Education Expenditures within Sub-Function 3200</u> See list of exclusions in the note below.	1,449,495.07

Note: The Current Special Education Expenditure amounts for each line should be calculated as follows:

- * Include the total expenditures for special education costs from all governmental funds and the food service fund 51 for the function/sub-function requested
- * Exclude data from sub-functions: 1243,1450,1500,1600,1807,2280,2450,2750,2990
- * Exclude data from objects: 322,511,512,516,561,562,564,566,592,593,594,595,596,597,700,830,899

Benefits for Staff Relative to Collective
Bargaining Agreements

	OBJECT	COVERED	NOT COVERED	TOTAL
10 General Fund	211 Medical Insurance			
	212 Dental Insurance			
	215 Eye Care Insurance			
	216 Prescription Insurance			
	271 Self-Insurance Medical Benefits	20,727,800.01	1,000,937.86	21,728,737.87
	272 Self-Insurance Dental Benefits	1,162,287.67	56,126.45	1,218,414.12
	275 Self-Insurance Eye Care Benefits	107,768.88	5,204.12	112,973.00
	276 Self-Insurance Prescription Benefits	5,162,798.25	249,309.63	5,412,107.88
	FUND TOTAL	\$27,160,654.81	\$1,311,578.06	\$28,472,232.87
50 Enterprise Fund	211 Medical Insurance			
	212 Dental Insurance			
	215 Eye Care Insurance			
	216 Prescription Insurance			
	271 Self-Insurance Medical Benefits	291,803.97	16,674.51	308,478.48
	272 Self-Insurance Dental Benefits	17,382.30	993.27	18,375.57
	275 Self-Insurance Eye Care Benefits	1,699.20	226.56	1,925.76
	276 Self-Insurance Prescription Benefits	64,085.64	3,662.04	67,747.68
	FUND TOTAL	\$374,971.11	\$21,556.38	\$396,527.49
60 Internal Service Fund	No Self Insurance data to report			
	211 Medical Insurance			
	212 Dental Insurance			
	215 Eye Care Insurance			
	216 Prescription Insurance			
	271 Self-Insurance Medical Benefits			
	272 Self-Insurance Dental Benefits			
	275 Self-Insurance Eye Care Benefits			
	276 Self-Insurance Prescription Benefits			
	FUND TOTAL			
Total of All Funds		\$27,535,625.92	\$1,333,134.44	\$28,868,760.36

LEA : 123464502 Lower Merion SD

Printed 11/19/2024 9:38:44 AM

Page - 1 of 1

Function	Special Education (Prior Year)	Nonspecial Education (Prior Year)	Total (Prior Year)	Special Education (Current Year)	Nonspecial Education (Current Year)	Total (Current Year)
2120 Guidance Services	1,045,703.70	4,262,016.03	5,307,719.73	1,133,294.93	4,241,689.24	5,374,984.17
2140 Psychological Services	1,665,961.73	1,110,641.15	2,776,602.88	1,658,698.34	1,105,798.89	2,764,497.23
2150 Speech Pathology and Audiology Services						
2160 Social Work Services						
2260 Instruction and Curriculum Development Services	940,287.09	2,478,503.84	3,418,790.93	971,335.85	2,429,902.89	3,401,238.74
2350 Legal and Accounting Services	428,291.33	1,000,373.46	1,428,664.79	491,137.42	824,679.52	1,315,816.94
2420 Medical Services		42,633.19	42,633.19		34,999.92	34,999.92
2440 Nursing Services	703,332.95	2,866,601.99	3,569,934.94	799,613.72	2,992,789.25	3,792,402.97
2700 Student Transportation Services	5,445,101.18	12,705,236.08	18,150,337.26	5,385,245.26	13,956,955.30	19,342,200.56
Total	\$10,228,677.98	\$24,466,005.74	\$34,694,683.72	\$10,439,325.52	\$25,586,815.01	\$36,026,140.53

LEA : 123464502 Lower Merion SD

Printed 11/19/2024 9:38:48 AM

Page - 1 of 3

(PRINCIPAL AMOUNTS ONLY)

GOVERNMENTAL FUNDS/ ACTIVITIES

	Short-Term Borrowing	General Obligation Bonds/Notes	Authority Building Obligations	Leases, Other Right to Use Arrangements	Extended Term Financing Agreements	Other Long Term Debt/Liabilities	OPEB, Comp Abs, Net Pension Liab	Total
1. Debt at Beginning of Fiscal Year		198,445,000.00		564,879.00			436,537,160.00	635,547,039.00
2. Additional Debt Incurred During Year							6,208,673.00	6,208,673.00
3. Retirements and Repayments		24,275,000.00		403,533.00				24,678,533.00
4. Debt at End of Fiscal Year		174,170,000.00		161,346.00			442,745,833.00	617,077,179.00
5. Accreted Interest at End Of Fiscal Year								
6. Total Debt and Accreted Interest		174,170,000.00		161,346.00			442,745,833.00	617,077,179.00
7. Current Portion P&I - Due within 1 year		29,993,635.00		161,346.00				30,154,981.00
8. Interest Paid during current fiscal year		7,464,999.00		8,521.23				7,473,520.23

(PRINCIPAL AMOUNTS ONLY)

PROPRIETARY FUNDS

	Short-Term Borrowing	General Obligation Bonds/Notes	Authority Building Obligations	Leases, Other Right to Use Arrangements	Extended Term Financing Agreements	Other Long Term Debt/Liabilities	OPEB, Comp Abs, Net Pension Liab	Total
1. Debt at Beginning of Fiscal Year							3,530,831.00	3,530,831.00
2. Additional Debt Incurred During Year							36,123.00	36,123.00
3. Retirements and Repayments							1,195.00	1,195.00
4. Debt at End of Fiscal Year							3,565,759.00	3,565,759.00
5. Accreted Interest at End Of Fiscal Year								
6. Total Debt and Accreted Interest							3,565,759.00	3,565,759.00
7. Current Portion P&I - Due within 1 year								
8. Interest Paid during current fiscal year								

LEA : 123464502 Lower Merion SD

Printed 11/19/2024 9:38:48 AM

Total Principal and Interest Payments Made by Your School - All Funds

Function	Fund		Principal (910)	Principal (920)	Interest (830)	Total (Principal +Interest)	Misc Other Uses (990)
5110	10	General Fund	24,275,000.00		7,463,528.84	31,738,528.84	
5110	20	Special Revenue Funds					
5110	30	Capital Projects Funds					
5110	40	Debt Service Fund					
5110	90	Permanent Fund					
5120	10	General Fund					
5120	20	Special Revenue Funds					
5120	30	Capital Projects Funds					
5120	40	Debt Service Fund					
5140	10	General Fund	403,533.26		8,521.53	412,054.79	
5140	20	Special Revenue Funds					
5140	30	Capital Projects Funds					
5140	40	Debt Service Fund					
5140	90	Permanent Fund					
Total Debt Payments - Governmental Funds			\$24,678,533.26		\$7,472,050.37	\$32,150,583.63	

Function	Fund		Principal (910)	Principal (920)	Interest (830)	Total (Principal +Interest)
5110	50	Enterprise Fund				
5110	60	Internal Service Fund				
5120	50	Enterprise Fund				
5120	60	Internal Service Fund				
5140	50	Enterprise Fund				
5140	60	Internal Service Fund				
Total Debt Payments - Proprietary Funds						

LEA : 123464502 Lower Merion SD

Printed 11/19/2024 9:38:48 AM

Page - 3 of 3

Debt Details**Governmental Funds/ Activities**

Debt Category	Debt Issue Date (MM/YYYY)	Principal Amounts Only				Current Portion Due Within One Year (Principal and Interest)	Interest Paid During Fiscal Year
		Debt at Beginning of Fiscal Year	Additions	Reductions / Repayments	Debt at End of Fiscal Year		
General Obligation Bonds/Notes – CIB	03/2021	21,665,000.00		3,005,000.00	18,660,000.00	4,213,875.00	1,008,125.00
General Obligation Bonds/Notes – CIB	12/2020	50,615,000.00		5,000.00	50,610,000.00	2,169,925.00	2,165,175.00
General Obligation Bonds/Notes – CIB	09/2019	18,935,000.00		7,550,000.00	11,385,000.00	8,160,400.00	284,025.00
General Obligation Bonds/Notes – CIB	09/2019	24,455,000.00		5,000.00	24,450,000.00	1,309,500.00	1,065,875.00
General Obligation Bonds/Notes – CIB	03/2016	26,320,000.00		1,115,000.00	25,205,000.00	1,927,400.00	809,650.00
General Obligation Bonds/Notes – CIB	04/2015	6,750,000.00		475,000.00	6,275,000.00	672,835.00	197,310.00
General Obligation Bonds/Notes – CIB	04/2015	16,935,000.00		2,595,000.00	14,340,000.00	3,089,700.00	495,075.00
General Obligation Bonds/Notes – CIB	02/2009	30,270,000.00		7,025,000.00	23,245,000.00	8,450,000.00	1,432,150.00
General Obligation Bonds/Notes – CIB	07/2006	2,500,000.00		2,500,000.00			7,614.00
Leases and Other Right to Use Arrangements		564,879.00		403,533.00	161,346.00	161,346.00	8,521.23
Compensated Absences		800,017.00	1,588,583.00		2,388,600.00		
Other Post-Employment Benefits (OPEB)		26,684,337.00	262,396.00		26,946,733.00		
Net Pension Liability		409,052,806.00	4,357,694.00		413,410,500.00		
Totals for Debt Entered:		\$635,547,039.00	\$6,208,673.00	\$24,678,533.00	\$617,077,179.00	\$30,154,981.00	\$7,473,520.23

Bond Details**Proprietary Funds**

Debt Category	Debt Issue Date (MM/YYYY)	Principal Amounts Only				Current Portion Due Within One Year (Principal and Interest)	Interest Paid During Fiscal Year
		Debt at Beginning of Fiscal Year	Additions	Reductions / Repayments	Debt at End of Fiscal Year		
Other Post-Employment Benefits (OPEB)		140,073.00		1,195.00	138,878.00		
Net Pension Liability		3,390,758.00	36,123.00		3,426,881.00		
Totals for Debt Entered:		\$3,530,831.00	\$36,123.00	\$1,195.00	\$3,565,759.00		

LEA : 123464502 Lower Merion SD

Printed 11/19/2024 9:38:51 AM

Page - 1 of 1

General Fund (10)

Section 1: Tuition/Purchased Services as Reported within Expenditure Detail	Amount
Tuition Reported in General Fund Expenditures 1000-560	7,772,022.91
Purchased Services in General Fund Expenditures 1000-594 and 1000-597	1,497.24
Section 1 Total	\$7,773,520.15

Section 2: Tuition Paid to Institution Types During Fiscal Year	Tuition Paid For Nonspecial Education	Tuition Paid For Special Education	Total
1 1306 Institutions			
2 Institutionalized Children's Programs			
3 Juveniles Incarcerated in Adult Facilities			
4 Residential Treatment Facilities			
5 Other Local Education Agencies	6,923.44		6,923.44
6 Brick and Mortar Charter Schools	22,928.48	170,413.73	193,342.21
7 Cyber Charter Schools	467,065.12	770,926.36	1,237,991.48
8 Career and Technology Centers	943,208.38		943,208.38
9 Approved Private Schools		2,318,627.37	2,318,627.37
10 PA Chartered Schools for the Deaf and Blind			
11 Private Residential Rehabilitative Institutions	20,463.00		20,463.00
12 Juvenile Detention Centers			
13 Special Program Jointures			
14 Other Tuition Not Included Elsewhere In This Section	64,358.25	2,988,606.02	3,052,964.27
Section 2 Total	\$1,524,946.67	\$6,248,573.48	\$7,773,520.15

Food Service / Cafeteria Operations Fund (51)

2000 Support Services	Total
300 <u>Purchased Professional and Technical Services</u>	
360 Employee Training and Development Services	286.71
Total Purchased Professional and Technical Services	\$286.71
500 <u>Other Purchased Services</u>	
580 Travel	739.44
Total Other Purchased Services	\$739.44
800 <u>Other Objects</u>	
810 Dues and Fees	1,111.00
Total Other Objects	\$1,111.00
Total 2000 Support Services	\$2,137.15

Food Service / Cafeteria Operations Fund (51)

2800 Support Services – Central	<u>Elementary</u>	<u>Secondary</u>	<u>Federal</u>	<u>Total</u>
300 <u>Purchased Professional and Technical Services</u>				
360 Employee Training and Development Services				286.71
Total Purchased Professional and Technical Services				\$286.71
500 <u>Other Purchased Services</u>				
580 Travel				739.44
Total Other Purchased Services				\$739.44
800 <u>Other Objects</u>				
810 Dues and Fees				1,111.00
Total Other Objects				\$1,111.00
Total 2800 Support Services – Central				\$2,137.15

Food Service / Cafeteria Operations Fund (51)

2830 Staff Services	<u>Elementary</u>	<u>Secondary</u>	<u>Federal</u>	<u>Total</u>
300 <u>Purchased Professional and Technical Services</u>				
360 Employee Training and Development Services				286.71
Total Purchased Professional and Technical Services				\$286.71
500 <u>Other Purchased Services</u>				
580 Travel				739.44
Total Other Purchased Services				\$739.44
800 <u>Other Objects</u>				
810 Dues and Fees				1,111.00
Total Other Objects				\$1,111.00
Total 2830 Staff Services				\$2,137.15

LEA : 123464502 Lower Merion SD

Printed 11/19/2024 9:38:55 AM

Page - 4 of 4

Food Service / Cafeteria Operations Fund (51)

2836 Staff Development Services – Non-Instructional, Non-Certified Staff Only

ElementarySecondaryFederalTotal300 Purchased Professional and Technical Services

360 Employee Training and Development Services

286.71

Total Purchased Professional and Technical Services**\$286.71**500 Other Purchased Services

580 Travel

739.44

Total Other Purchased Services**\$739.44**800 Other Objects

810 Dues and Fees

1,111.00

Total Other Objects**\$1,111.00****Total 2836 Staff Development Services – Non-Instructional, Non-Certified Staff Only****\$2,137.15**

LEA : 123464502 Lower Merion SD

Printed 11/19/2024 9:38:58 AM

Page - 1 of 2

Food Service / Cafeteria Operations Fund (51)**3000 Operation of Non-Instructional Services****Total****100 Personnel Services – Salaries**

100 Personnel Services – Salaries

1,416,176.66

Total Personnel Services – Salaries**\$1,416,176.66****200 Personnel Services – Employee Benefits**

210 Group Insurance – Contracted Provider

2,991.24

220 Social Security Contributions

106,975.75

230 PSERS Retirement Contributions

398,224.76

260 Workers' Compensation

9,719.30

270 Group Insurance – Self-Insurance

394,601.73

280 Other Post-Employment Benefits (OPEB)

2,725.00

Total Personnel Services – Employee Benefits**\$915,237.78****400 Purchased Property Services**

430 Repairs and Maintenance Services

35,203.57

Total Purchased Property Services**\$35,203.57****500 Other Purchased Services**

580 Travel

990.06

Total Other Purchased Services**\$990.06****600 Supplies**

610 General Supplies

103,822.89

630 Food

2,268,111.12

650 Supplies & Fees – Technology Related

10,380.72

Total Supplies**\$2,382,314.73****700 Property**

740 Depreciation

18,221.89

Total Property**\$18,221.89****800 Other Objects**

810 Dues and Fees

1,376.00

Total Other Objects**\$1,376.00****Total 3000 Operation of Non-Instructional Services****\$4,769,520.69**

LEA : 123464502 Lower Merion SD

Printed 11/19/2024 9:38:58 AM

Page - 2 of 2

Food Service / Cafeteria Operations Fund (51)

	<u>Elementary</u>	<u>Secondary</u>	<u>Federal</u>	<u>Total</u>
3100 Food Services				
100 Personnel Services – Salaries				
100 Personnel Services – Salaries				1,416,176.66
Total Personnel Services – Salaries				\$1,416,176.66
200 Personnel Services – Employee Benefits				
210 Group Insurance – Contracted Provider				2,991.24
220 Social Security Contributions				106,975.75
230 PSERS Retirement Contributions				398,224.76
260 Workers' Compensation				9,719.30
270 Group Insurance – Self-Insurance				394,601.73
280 Other Post-Employment Benefits (OPEB)				2,725.00
Total Personnel Services – Employee Benefits				\$915,237.78
400 Purchased Property Services				
430 Repairs and Maintenance Services				35,203.57
Total Purchased Property Services				\$35,203.57
500 Other Purchased Services				
580 Travel				990.06
Total Other Purchased Services				\$990.06
600 Supplies				
610 General Supplies				103,822.89
630 Food				2,268,111.12
650 Supplies & Fees – Technology Related				10,380.72
Total Supplies				\$2,382,314.73
700 Property				
740 Depreciation				18,221.89
Total Property				\$18,221.89
800 Other Objects				
810 Dues and Fees				1,376.00
Total Other Objects				\$1,376.00
Total 3100 Food Services				\$4,769,520.69

	<u>Food Service(51)</u>	<u>Child Care Operations(52)</u>	<u>Other Enterprise(58)</u>	<u>Internal Service(60)</u>	<u>Total</u>
2000 <u>Support Services</u>					
2800 Support Services - Central	2,137.15				2,137.15
Total Support Services	\$2,137.15				\$2,137.15
3000 <u>Operation of Non-Instructional Services</u>					
3100 Food Services	4,769,520.69				4,769,520.69
Total Operation of Non-Instructional Services	\$4,769,520.69				\$4,769,520.69
TOTAL ACTUAL EXPENDITURES & OTHER FINANCING USES	\$4,771,657.84				\$4,771,657.84

LEA : 123464502 Lower Merion SD

Printed 11/19/2024 9:39:07 AM

Page - 1 of 1

Fund	School	School Number	Local Personnel	Local Nonpersonnel	State Personnel	State Nonpersonnel	Federal Personnel	Federal Nonpersonnel	Total	Explanation
10										
	Bala-Cynwyd MS	3293	20,587,651.91	2,611,764.54	3,670,519.31	465,644.76	162,505.71	20,615.59	27,518,701.82	
	Belmont Hills El Sch	7597	8,653,488.26	982,501.97	1,542,808.08	175,167.74	68,305.08	7,755.24	11,430,026.37	
	Black Rock MS	8500	25,212,756.71	3,120,210.71	4,495,117.30	556,294.31	199,013.32	24,628.94	33,608,021.29	
	Cynwyd Sch	3286	9,454,957.58	1,269,339.20	1,685,699.98	226,307.21	74,631.37	10,019.35	12,720,954.69	
	Gladwyne Sch	3291	11,836,741.66	1,469,452.92	2,110,342.11	261,984.97	93,431.64	11,598.92	15,783,552.22	
	Harriton SHS	3296	30,570,998.39	4,020,794.84	5,450,424.38	716,857.13	241,307.84	31,737.57	41,032,120.15	
	Lower Merion HS	3295	38,270,028.07	5,372,826.31	6,823,064.50	957,907.33	302,079.04	42,409.64	51,768,314.89	
	Merion El Sch	3287	10,129,121.86	1,275,874.92	1,805,894.99	227,472.45	79,952.79	10,070.94	13,528,387.95	
	Penn Valley Sch	3288	12,026,424.35	1,375,609.61	2,144,160.15	245,253.89	94,928.88	10,858.18	15,897,235.06	
	Penn Wynne Sch	3289	13,271,495.29	1,739,071.68	2,366,140.63	310,054.60	104,756.67	13,727.12	17,805,245.99	
	Welsh Valley MS	3294	20,779,055.52	2,829,686.45	3,704,644.16	504,497.49	164,016.53	22,335.73	28,004,235.88	
Total			200,792,719.60	26,067,133.15	35,798,815.59	4,647,441.88	1,584,928.87	205,757.22	269,096,796.31	