

MEETING NOTICE

POSTED IN ACCORDANCE WITH THE PROVISIONS OF MGL 30A § 20 Act relative to extending certain COVID-19 measures adopted during the state of emergency

Marblehead School Committee

Name of Board or Committee

Address: Marblehead High School – Library at 2 Humphry St. Marblehead MA 01945

OR

Zoom Conference join via the web link or Dial in

<https://marbleheadschoools-org.zoom.us/j/93190364889?pwd=M3VaZmtLdWR5aDJ0V3JsbzFBSiswdz09>

Meeting ID: 931 9036 4889

Password: 666503

Dial in Phone #1 646 931 3860

Thursday	October	5th	2023	7:00 pm
Day of Week	Month	Date	Year	Time

Agenda or Topics to be discussed listed below (That the chair reasonably anticipates will be discussed)

I. Initial Business

- a. Call to Order
- b. Commendations
- c. Public Comment
- d. Student Representative

II. District Updates – Michelle Cresta

- a. MCAS presentation

III. Consent Action and Agenda Items

- a. Schedule of Bills (vote)
- b. Approval of Minutes 7/6/23, 7/26/23, 8/11/23 (vote)
- c. Approval of Out of State Field Trip (vote)

IV. School Committee Communication and Discussion Items

- a. Interim Superintendent Search Discussion (vote)
- b. Approval of contracts (vote)
- c. ARPA (American Rescue Plan Act) discussion
- d. Declaration of Surplus Goods (vote)
- e. School Owned Properties Discussion
- f. Subcommittee and Liaison Updates and discussion

V. Closing Business

- a. New Business- School Committee Announcements and Requests
- b. Correspondence

Hybrid Meeting Notice: Members of the public are welcome to attend this in-person at 2 Humphrey St. Marblehead MA 01945 or by the remote zoom connection provided. Please note that the in-person meeting will not be suspended or terminated if technological problems interrupt the remote connection.

THIS AGENDA IS SUBJECT TO CHANGE

Chairperson: Sarah Fox
Posted by: Sarah Fox
Date: 10/3/2023

Marblehead Public Schools

Office of Teaching and Learning

**Julia Ferreira, Assistant Superintendent of
Teaching and Learning**

Angela Graziano, Instructional Coach





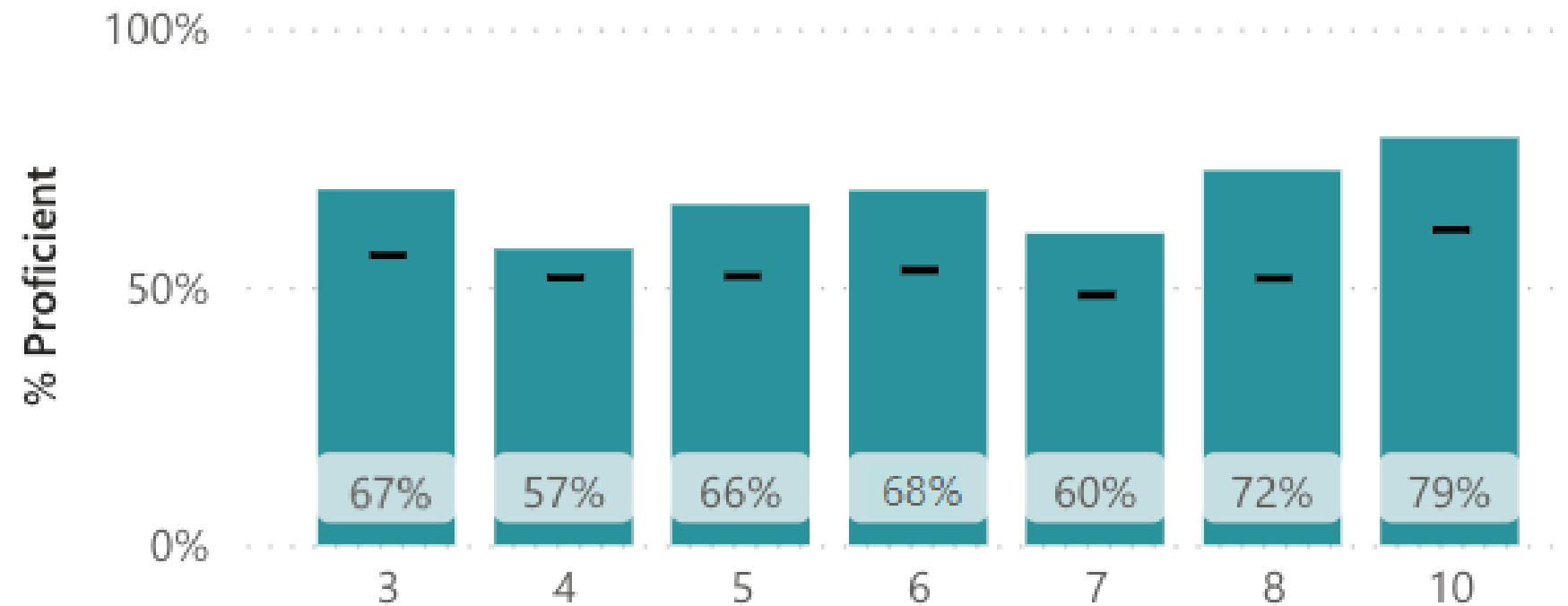
**THE STORY OF
MARBLEHEAD PUBLIC SCHOOLS
OFFICE OF TEACHING AND LEARNING AND THE
MASSACHUSETTS COMPREHENSIVE ASSESSMENT SYSTEM
(MCAS)**

2018-2019

- Next generation MCAS tests (2nd year online testing)
- Curriculum bias training
- Coordinated program review year through DESE

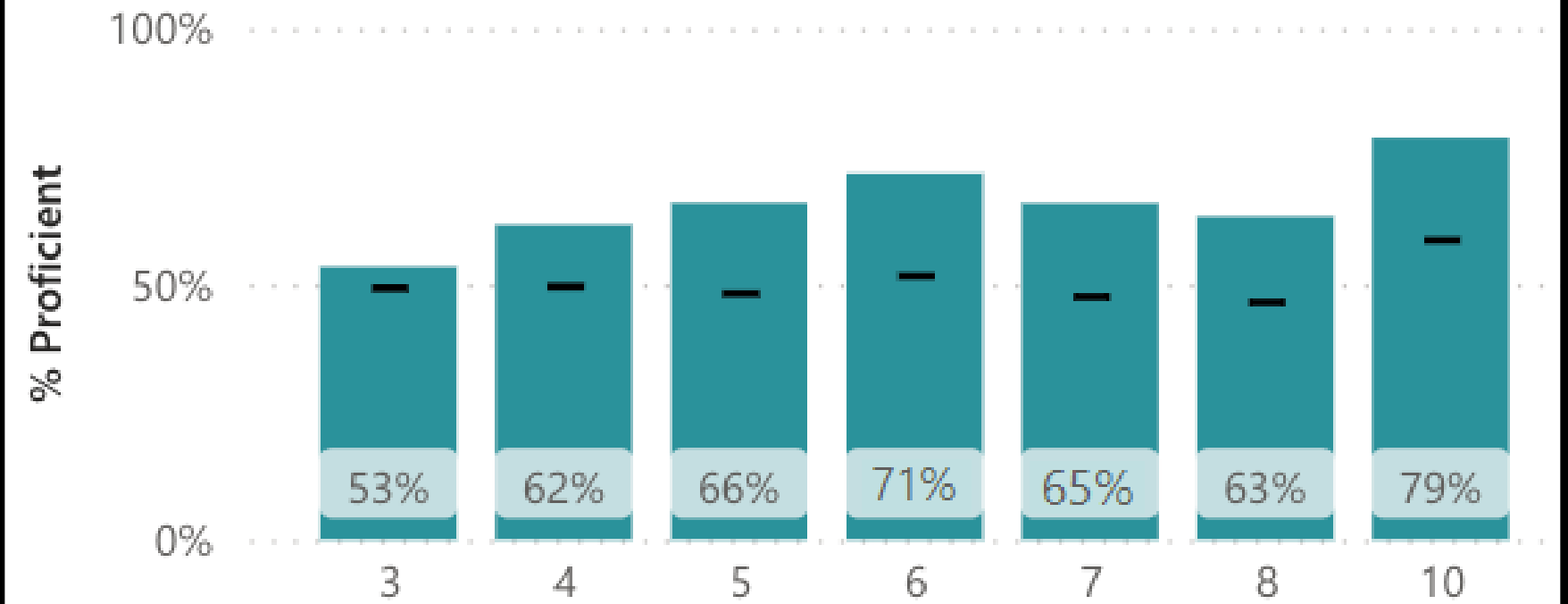
% Proficient by Testing Grade Level - ELA

● % Proficient — State Avg



% Proficient by Testing Grade Level - Math

● % Proficient — State Avg



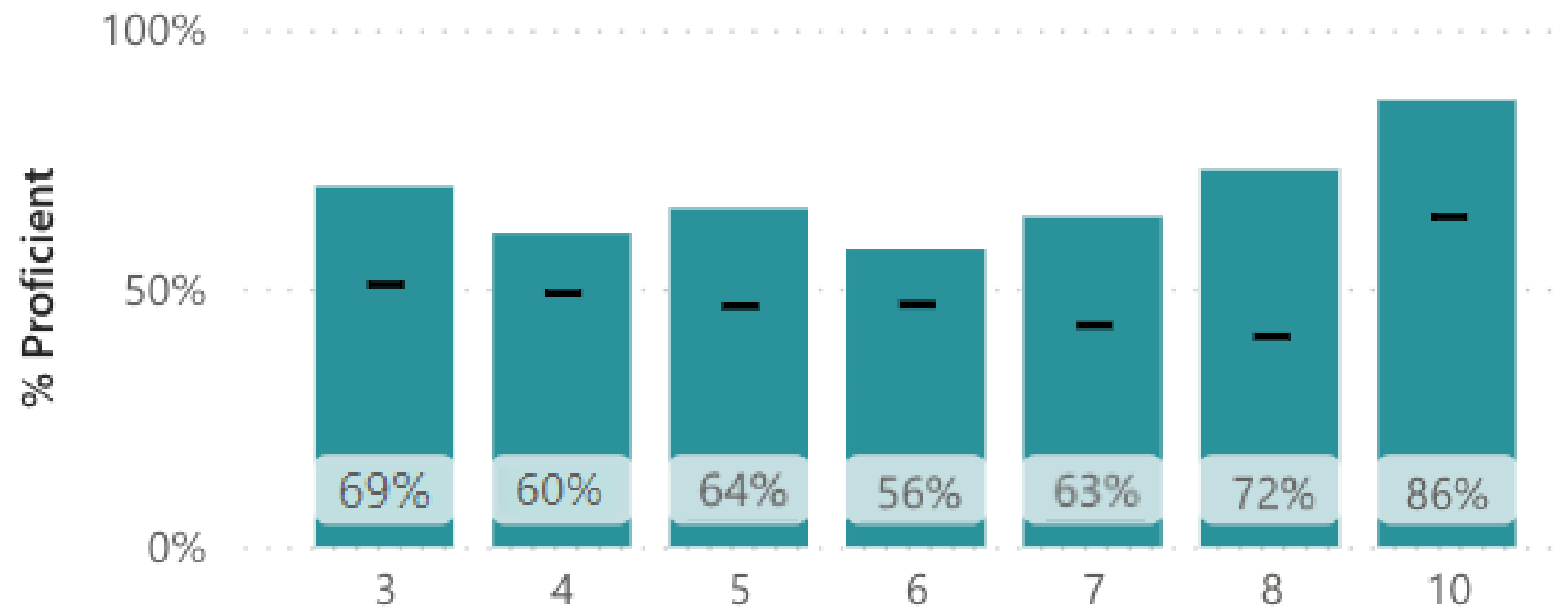
% met and exceeded

2020-2021

- Covid School Interruptions: Online, hybrid, and in-school learning
- New Superintendent & Assistant Supt. of Teaching and Learning
- Work toward alignment began
- MCAS consisted of shortened tests - essentially 1/2 tests were taken

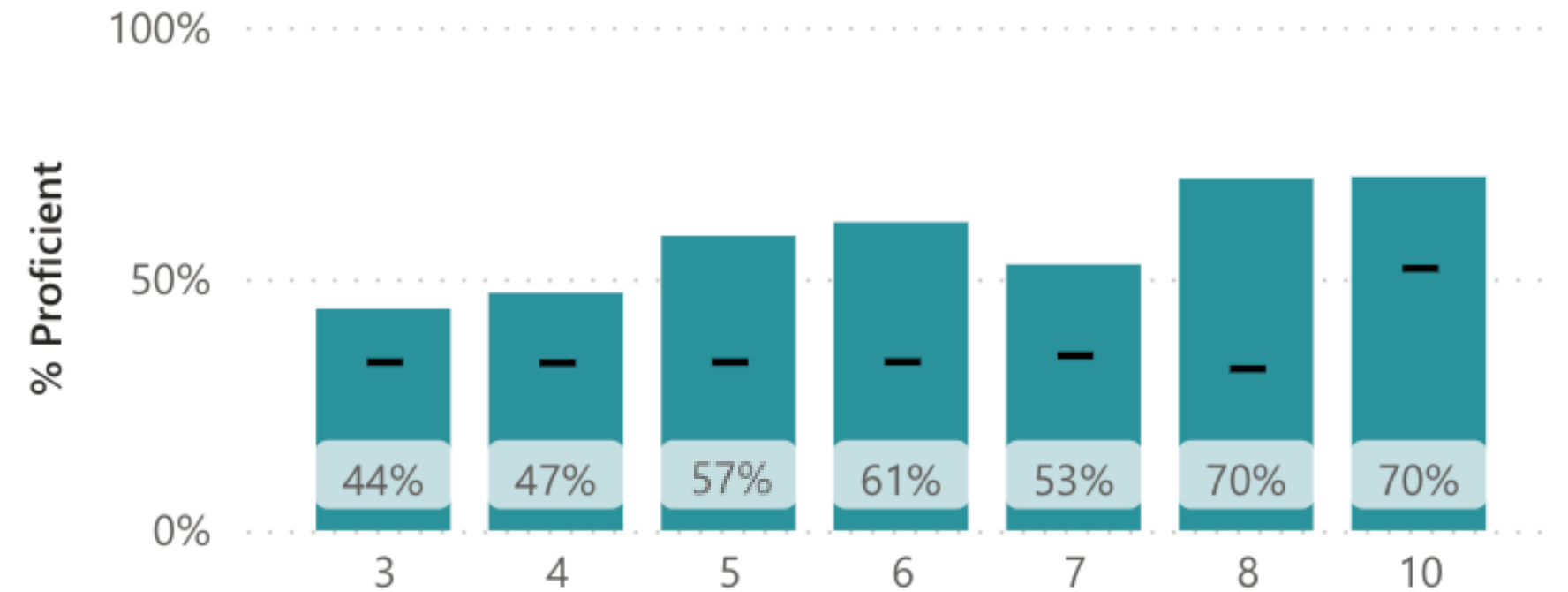
% Proficient by Testing Grade Level - ELA

● % Proficient — State Avg



% Proficient by Testing Grade Level - Math

● % Proficient — State Avg

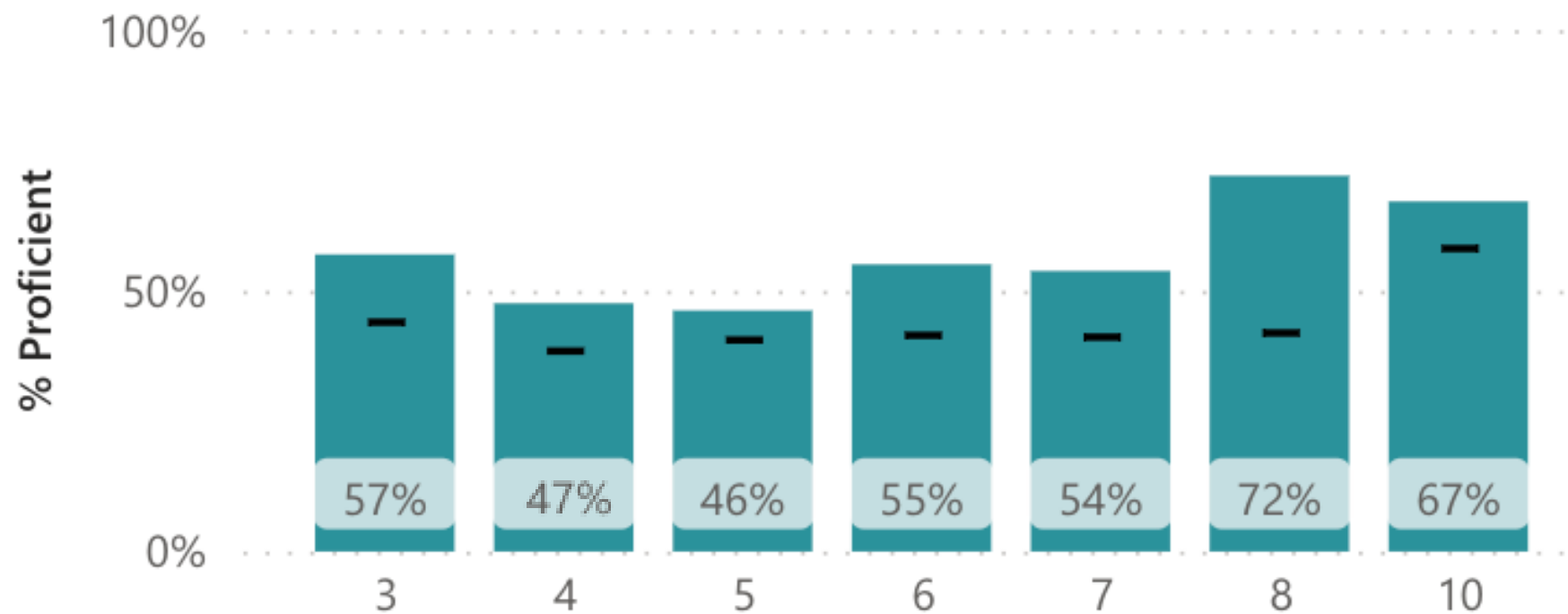


2021-2022

- Increase in time on learning, to include WIN block (What I Need)
- Instructional Coaching Team developed gr. K-6
- iReady integrated (Gr. K-8) as part of Multi-tiered Systems of Support (MTSS)
- New Math Curriculum K-8

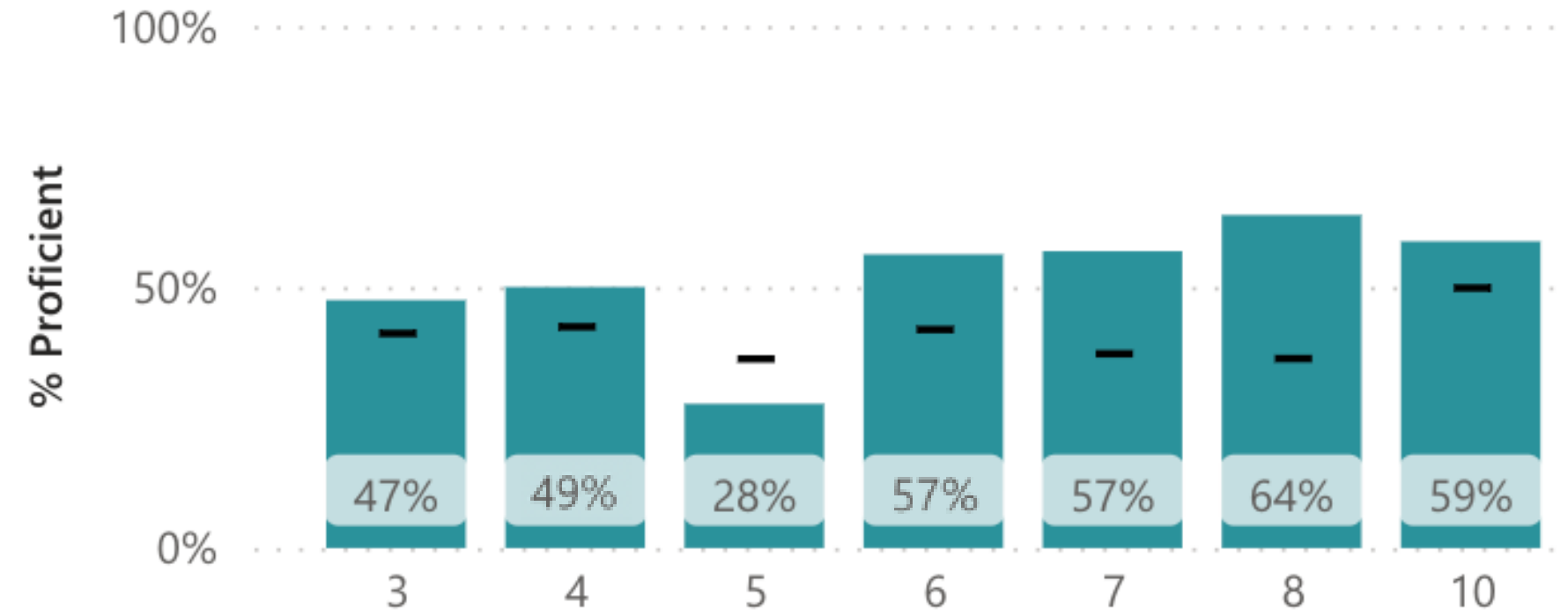
% Proficient by Testing Grade Level - ELA

● % Proficient — State Avg



% Proficient by Testing Grade Level - Math

● % Proficient — State Avg

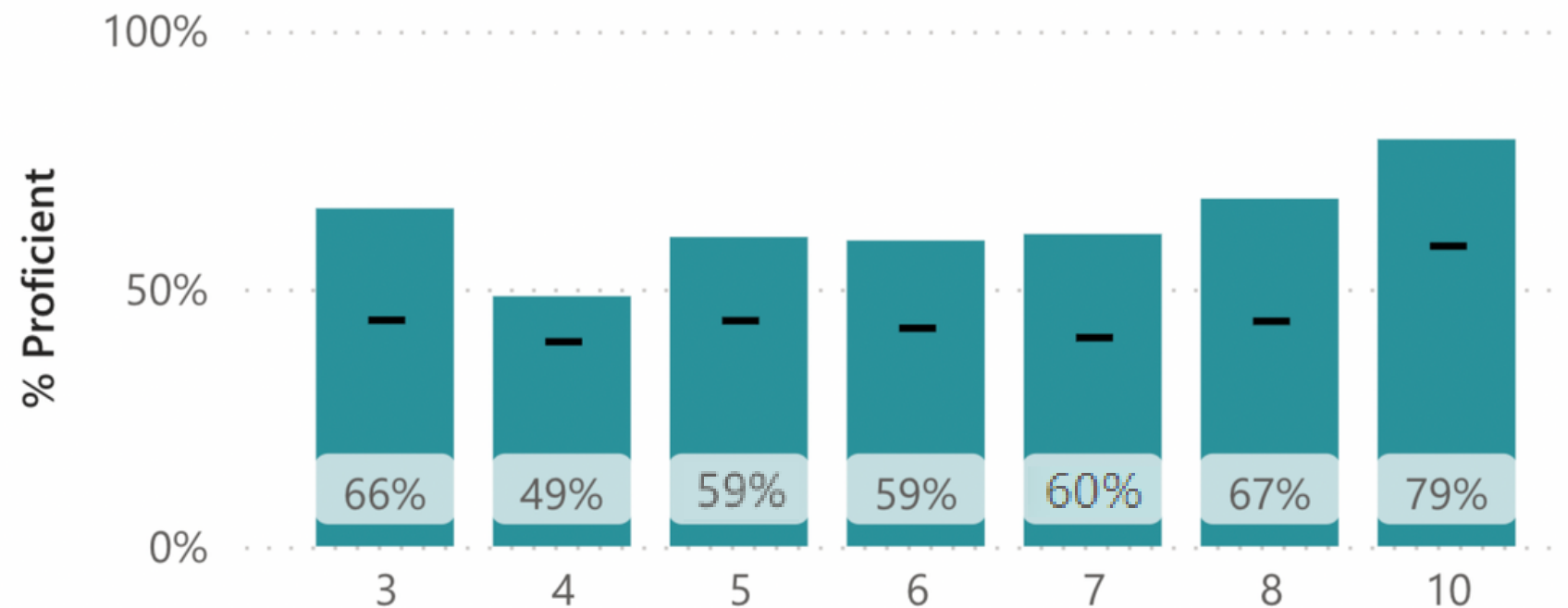


2022-2023

- 2 New Elementary Principals
- MTSS systems defined
- WIN & Magic block further developed
- Investment in Professional Learning Communities

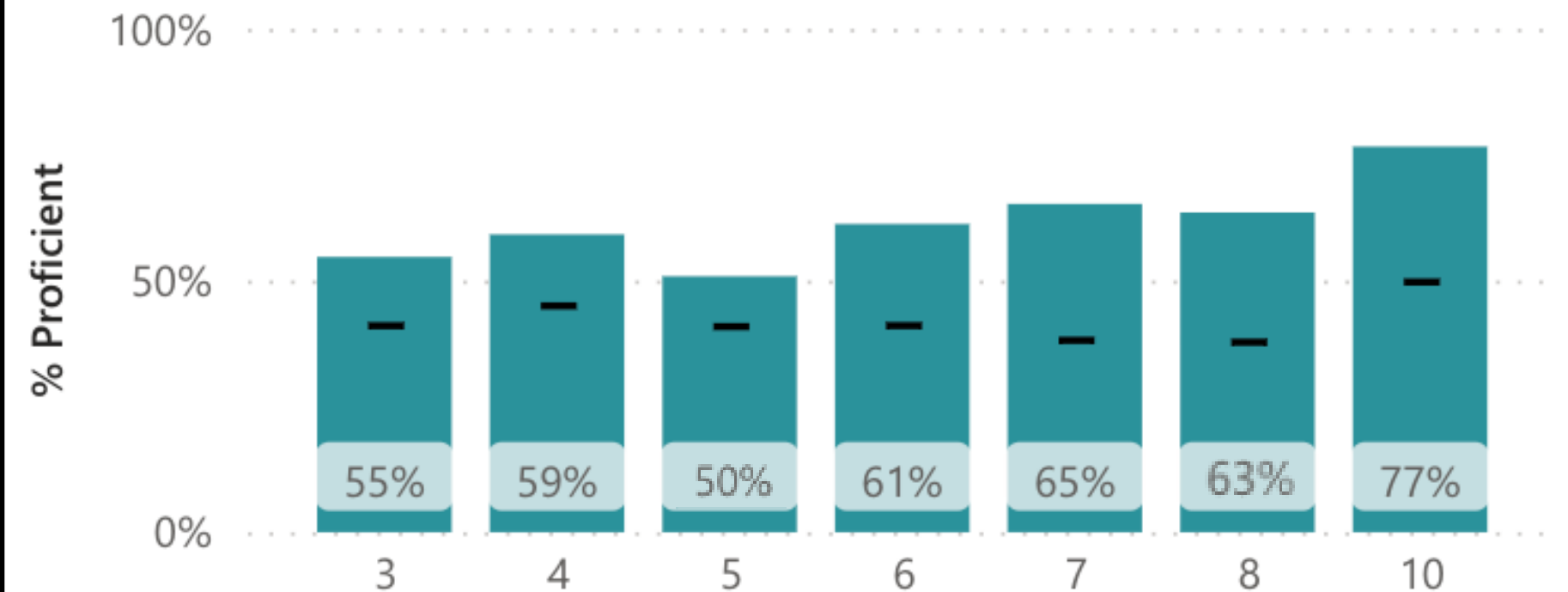
% Proficient by Testing Grade Level - ELA

● % Proficient — State Avg



% Proficient by Testing Grade Level - Math

● % Proficient — State Avg





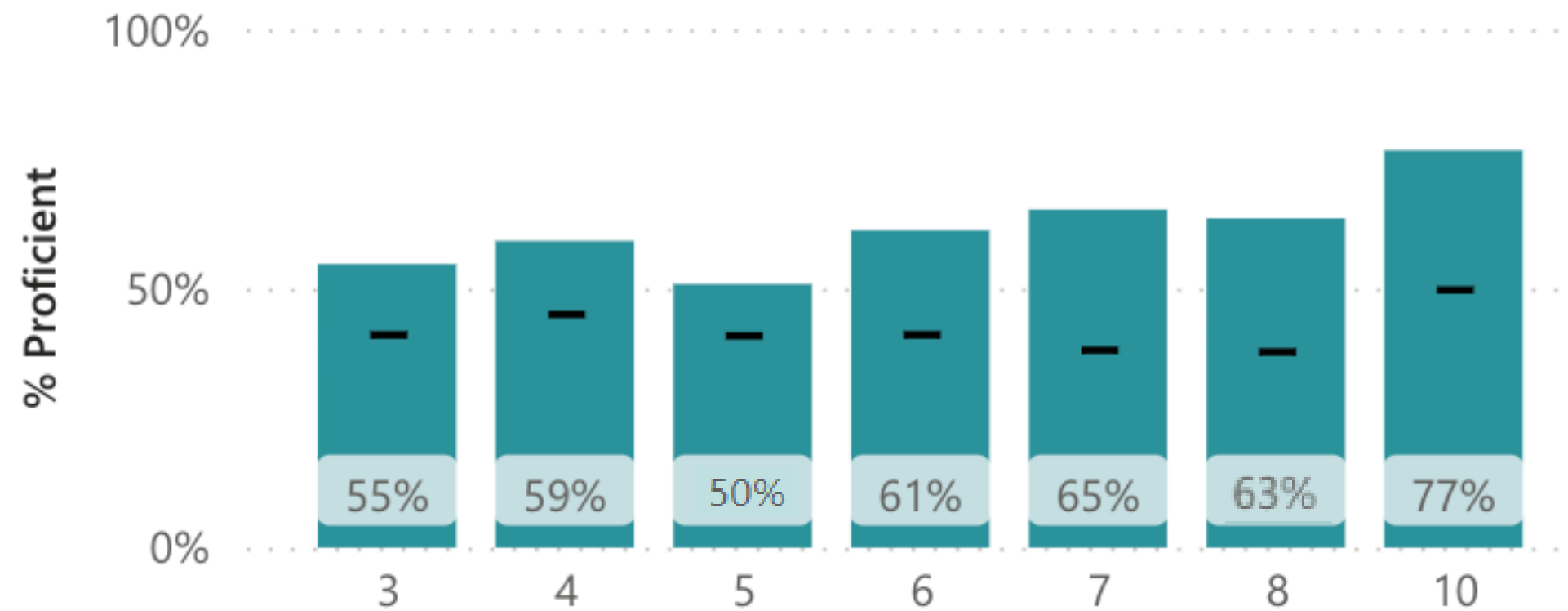
SPRING 2023 DATA, ANALYSIS, & NEXT STEPS

2023
Overall
Performance
Math

- Marblehead's growth in Math (gr. 3-10) exceeds the average growth and overall average for the state
- Overall proficiency levels are close to the pre-Covid levels of proficiency (67% in 2019 & 64% in 2023)

% Proficient by Testing Grade Level - Math

● % Proficient — State Avg

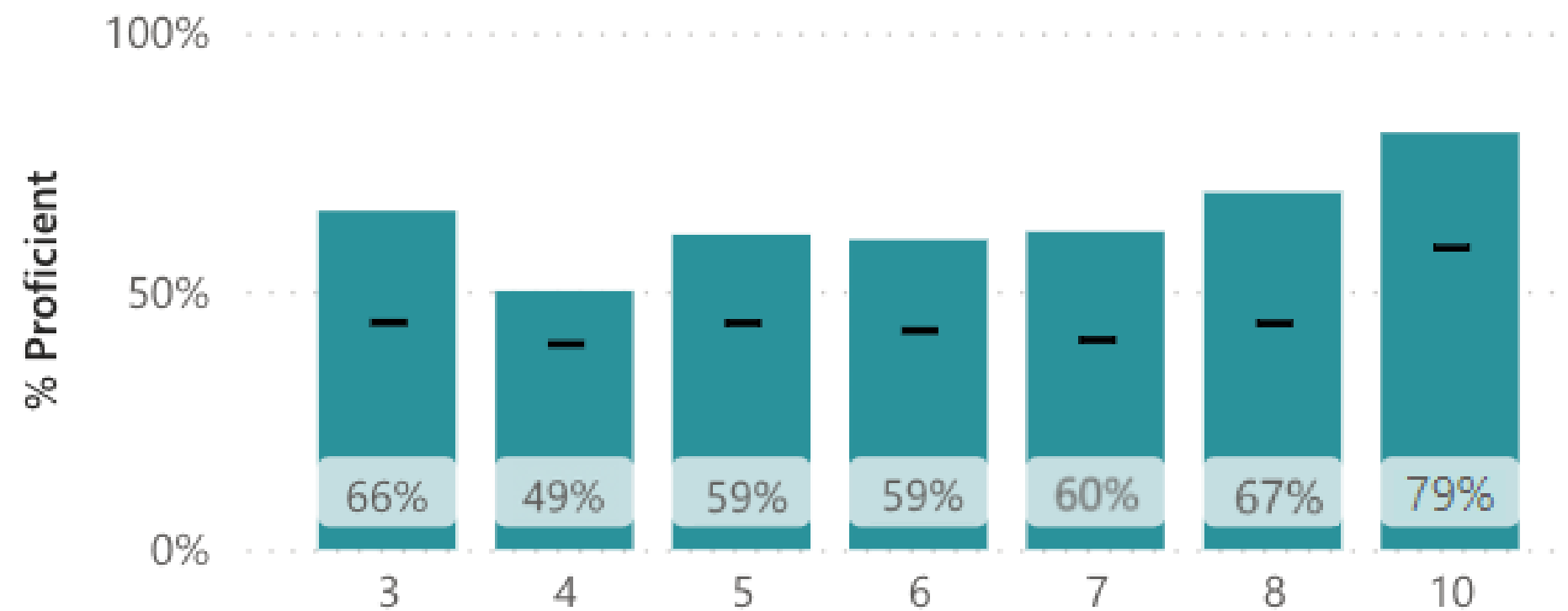


2023
Overall
Performance
ELA

- There was a 7% growth in Marblehead's ELA scores from 2022
- Overall proficiency levels are nearly at the pre-Covid levels of proficiency (68% in 2019 & 65% in 2023)

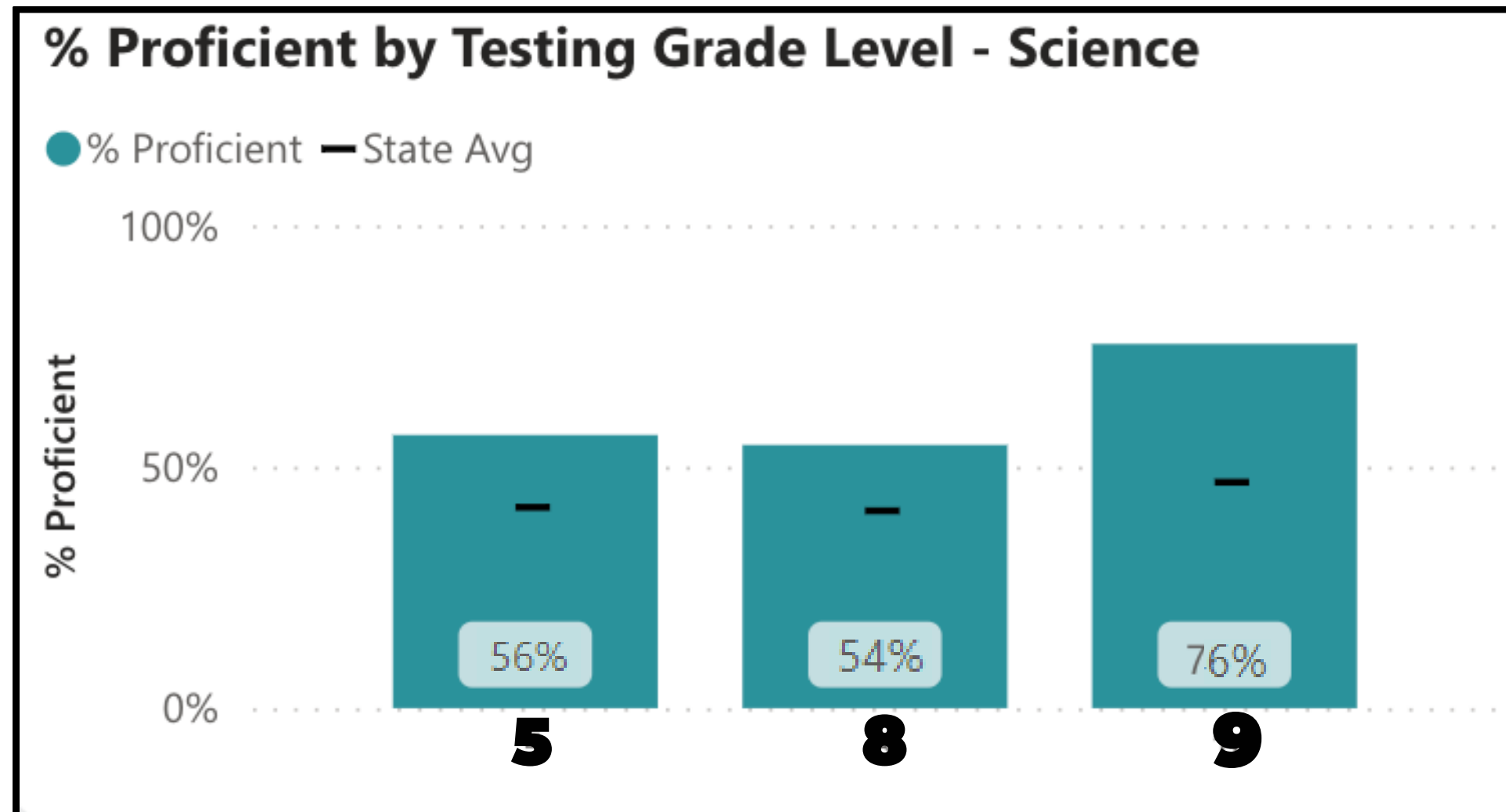
% Proficient by Testing Grade Level - ELA

● % Proficient — State Avg



2023
Overall
Performance
Science

- There was a 9% growth in MHS science scores from 2022
- We exceeded the pre-Covid levels of overall proficiency (61% in 2019 and 62% in 2023)



2023
Grade 3
Analysis

Analysis

Math

- 55% of students proficient in Math (47% in 2022)
- Students above pre-Covid levels of proficiency (53% in 2019)

ELA

- 66% of students proficient in ELA (57% in 2022)
- Students 1% away from pre-Covid proficiency levels (67% in 2019)

High Needs Sub Group

- 30% of high needs students proficient in Math (26% in 2019)
- 38% of high needs students proficient in ELA (39% in 2019)

2023
Grade 3
Next Steps

Next Steps

Commitment to Equity and Growth

- 1)** Continue focus on implementing Illustrative Mathematics with a focus on looking at data to determine where we can fill in gaps in learning
- 2)** Implement Wit and Wisdom to provide equitable access to ELA instruction across schools and grade levels
- 3)** Continue to develop and grow MTSS to support all students, with targeted interventions in place for students in need of support and acceleration

2023

4-6

Analysis

Analysis

Math

- 58% of students proficient in Math
- 14% growth from last year in Math
- 9% away from pre-Covid (66% in 2019)

ELA

- 57% of students proficient
- 7% growth from last year
- 7% away from pre-Covid (64% in 2019)

High Needs Sub Group

- 27% of high needs students proficient in Math (40% in 2019)
- 27% of high needs students proficient in ELA (39% in 2019)

2023

4-6

Next Steps

Next Steps

Commitment to Equity and Growth

- 1)** Continue focus on implementing Illustrative Mathematics with a focus on looking at data to determine where we can fill in gaps in learning
- 2)** Implement Wit and Wisdom to provide equitable access to ELA instruction across grade levels with support for EL learners
- 3)** Continue MTSS by using intervention block to support all students, with targeted interventions in place for students in need of support and acceleration

2023

7-8

Analysis

Analysis

Math

- 66% of students proficient in Math
- 5% growth from last year in Math
- 1% over pre-Covid performance (64% in 2019)

ELA

- 65% of students proficient in ELA
- 1% growth from last year
- 2% away from pre-Covid performance (66% in 2019)

High Needs Sub Group

- 34% of high needs students proficient in Math (33% in 2019)
- 37% of high needs students proficient in ELA (30% in 2019)

2023

7-8

Next Steps

Next Steps

Commitment to Equity and Growth

- 1)** Continue focus on implementing Ready Math with a focus on looking at data to determine where we can fill in gaps in learning
- 2)** Use iReady data to support student growth
- 3)** Continue to develop and grow MTSS to support all students, with targeted interventions in place for students in need of support and acceleration

2023
9-12
Analysis

Analysis

Math

- 78% of students proficient
- 19% growth from last year
- 1% away from pre-Covid performance (78% in 2019)

ELA

- 81% of students proficient in ELA
- 13% growth from last year in ELA
- Same as pre-Covid performance in ELA (79% in 2019)

High Needs Sub Group

- 38% of high needs students proficient in Math (48% in 2019)
- 54% of high needs students proficient in ELA (57% in 2019)

2023
9-12
Next Steps

Next Steps

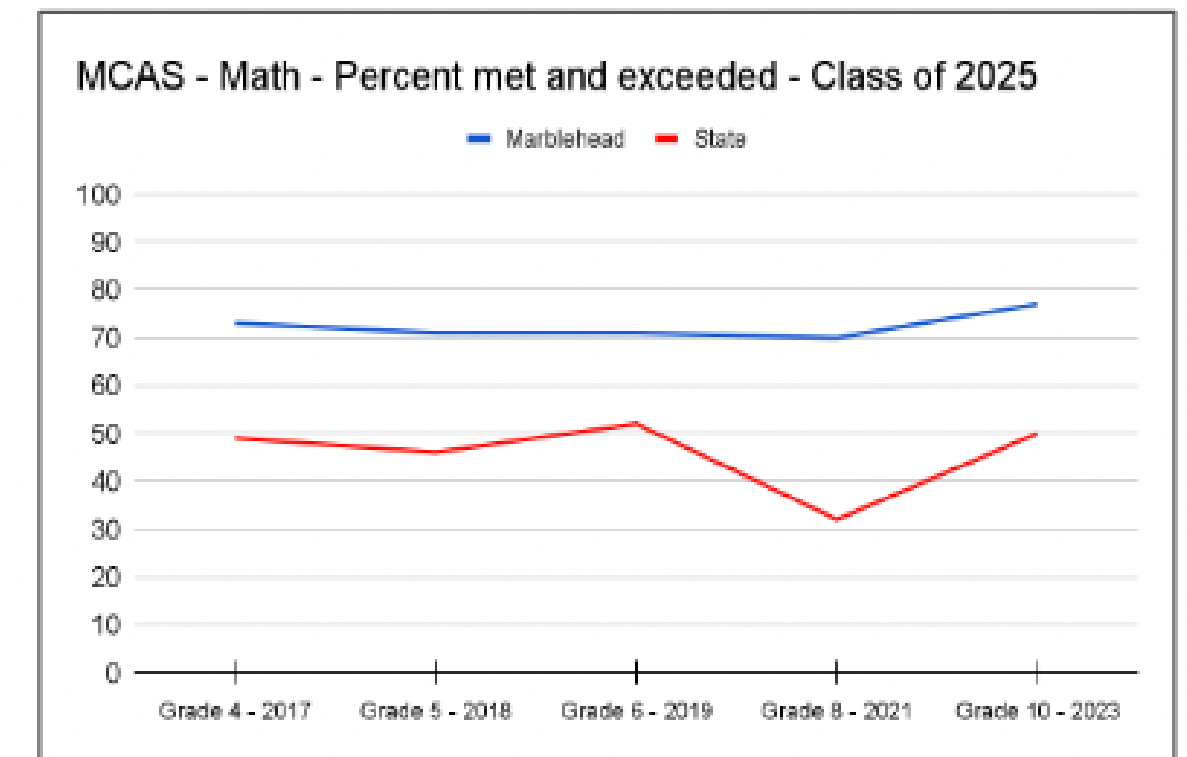
Commitment to Equity and Growth

- 1)** Continue to develop and grow MTSS to support all students, with targeted interventions in place for students in need of support and acceleration
- 2)** Increase curricular and assessment alignment
- 3)** Provide professional learning opportunities to support educator development

Longitudinal Highlights

Class of 2025 - Math

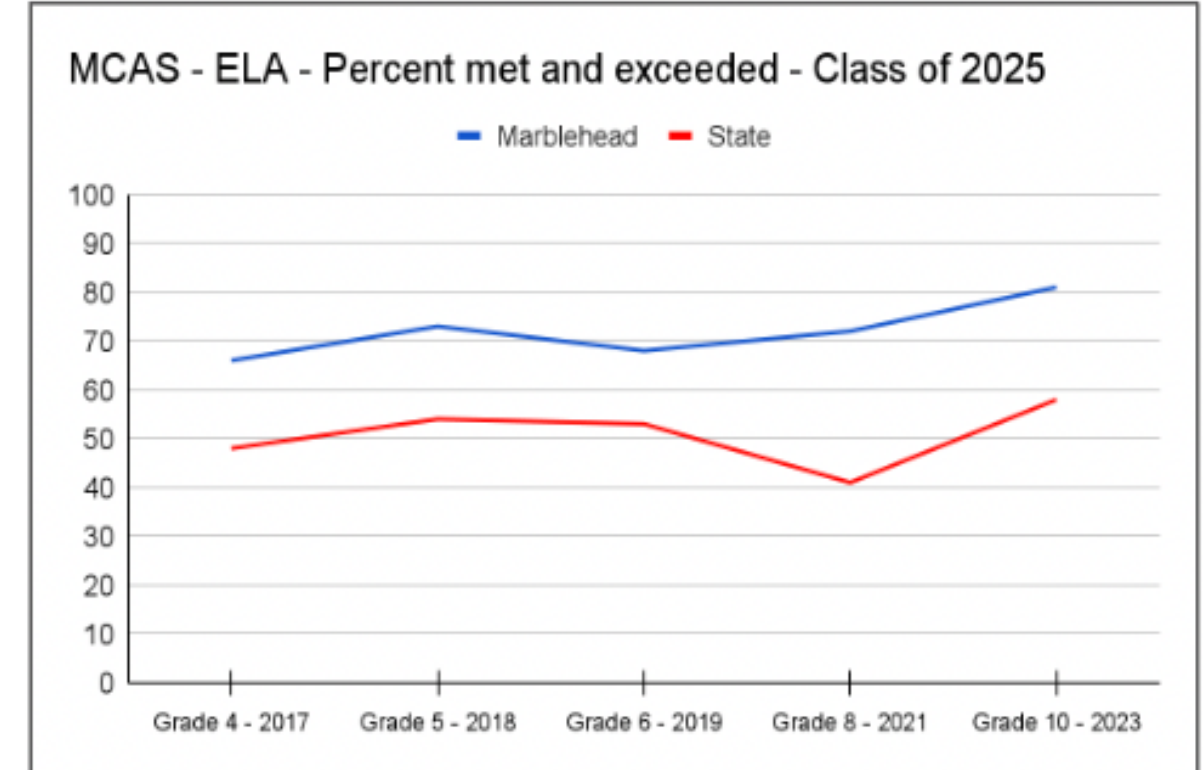
MCAS Math - Class of 2025	Grade 3 2016	Grade 4 2017	Grade 5 2018	Grade 6 2019	Grade 7 2020	Grade 8 2021	Grade 10 2023
Met and Exceeded	PARCC	73%	72%	71%	X	70%	77%
Exceeded	PARCC	8%	8%	18%	X	8%	12%
Met	PARCC	65%	63%	53%	X	62%	65%
Partially Met	PARCC	22%	25%	26%	X	24%	21%
Did Not Meet	PARCC	5%	3%	4%	X	6%	2%



Longitudinal Highlights

Class of 2025 - ELA

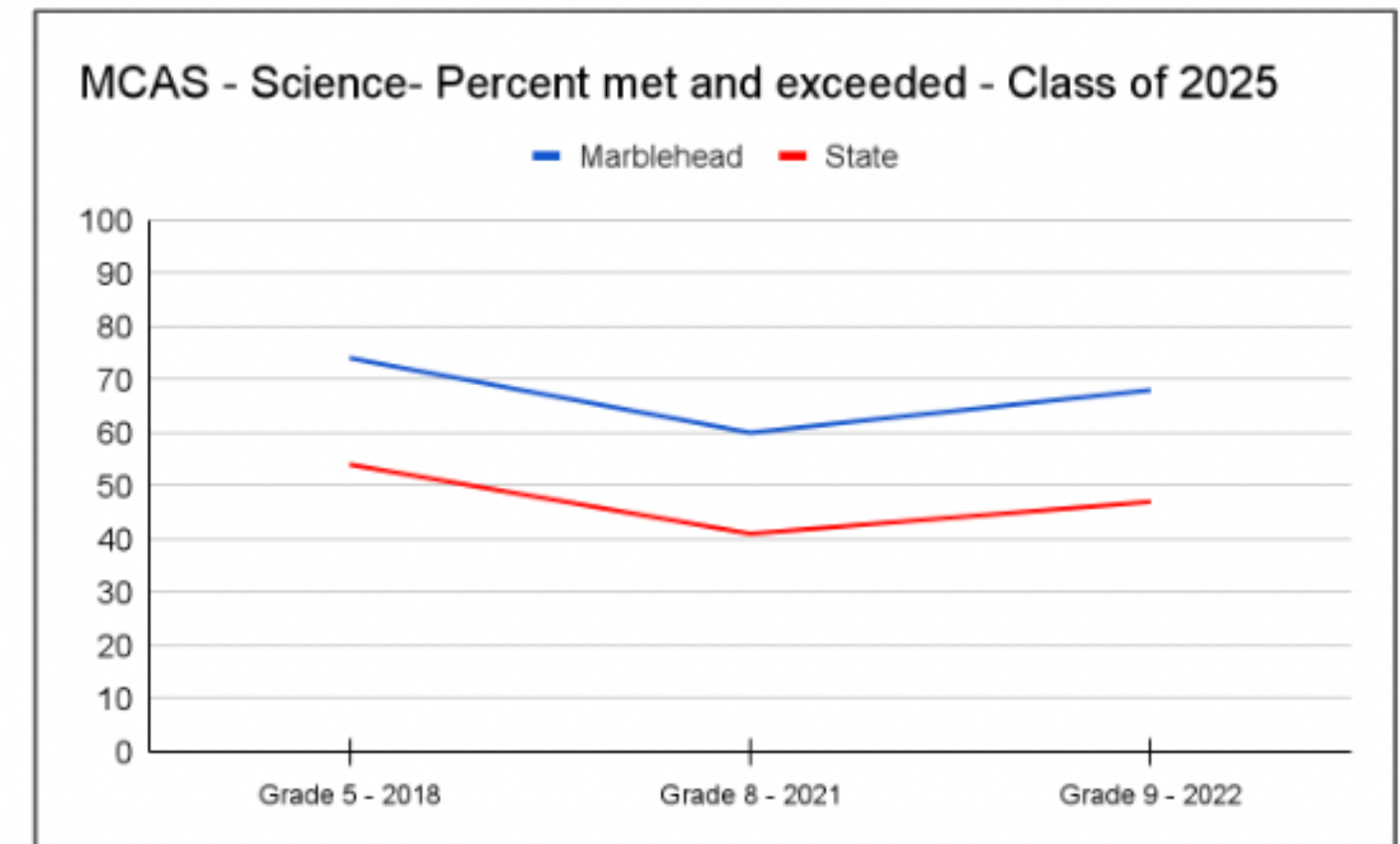
MCAS ELA - Class of 2025	Grade 3 2016	Grade 4 2017	Grade 5 2018	Grade 6 2019	Grade 7 2020	Grade 8 2021	Grade 10 2023
Met and Exceeded	PARCC	66%	74%	68%	X	72%	79%
Exceeded	PARCC	11%	9%	12%	X	15%	23%
Met	PARCC	55%	64%	57%	X	57%	56%
Partially Met	PARCC	30%	25%	25%	X	22%	18%
Did Not Meet	PARCC	4%	2%	6%	X	6%	3%



Longitudinal Highlights

Class of 2025 - Science

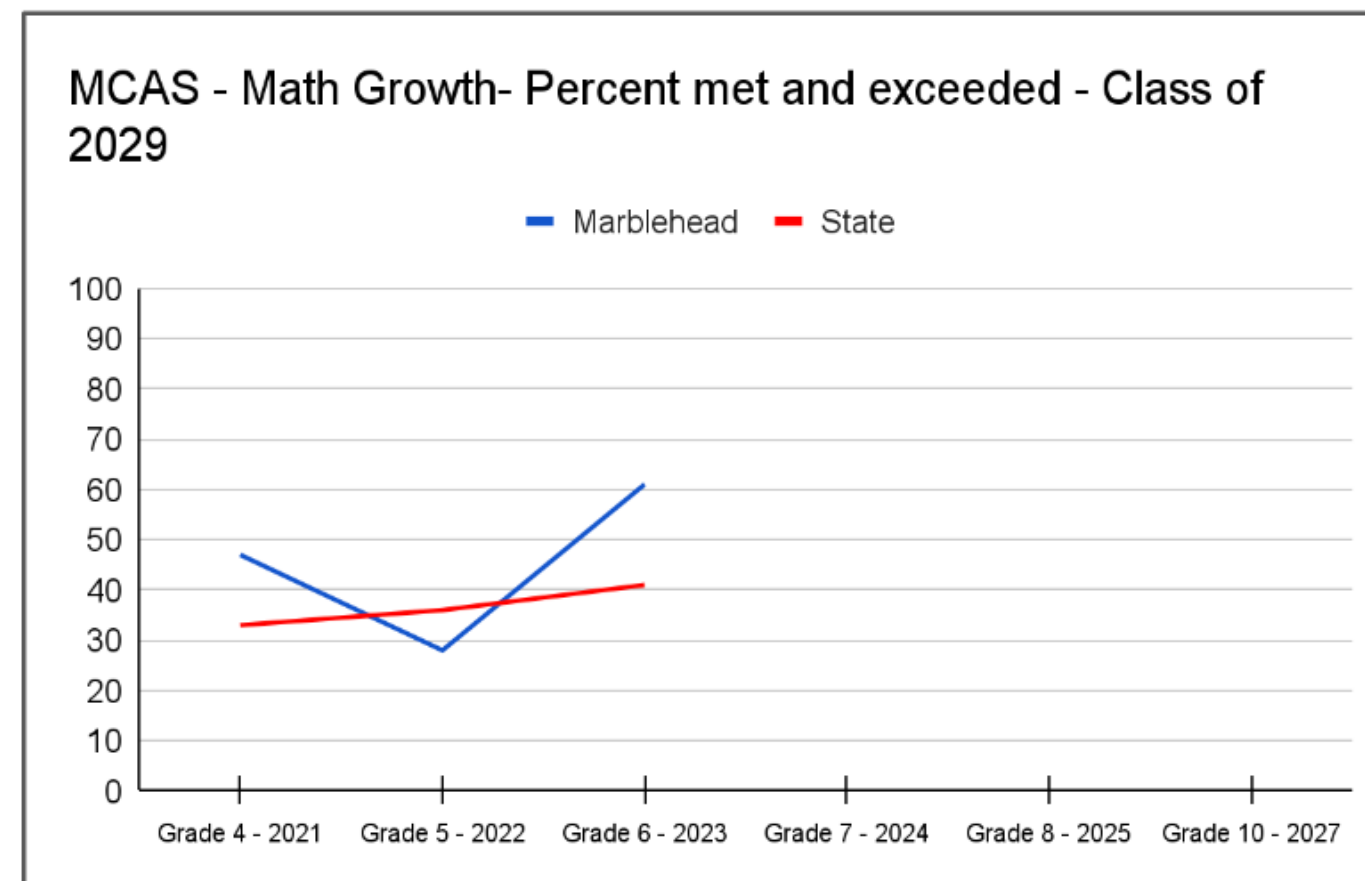
MCAS Science - Class of 2025	Grade 5 - 2018	Grade 8 - 2021	Grade 9 - 2022
Met and Exceeded	74%	60%	68%
Exceeded	40%	11%	16%
Met	34%	48%	52%
Partially Met	23%	32%	28%
Did Not Meet	4%	8%	4%



Longitudinal Highlights

Class of 2029 - Math

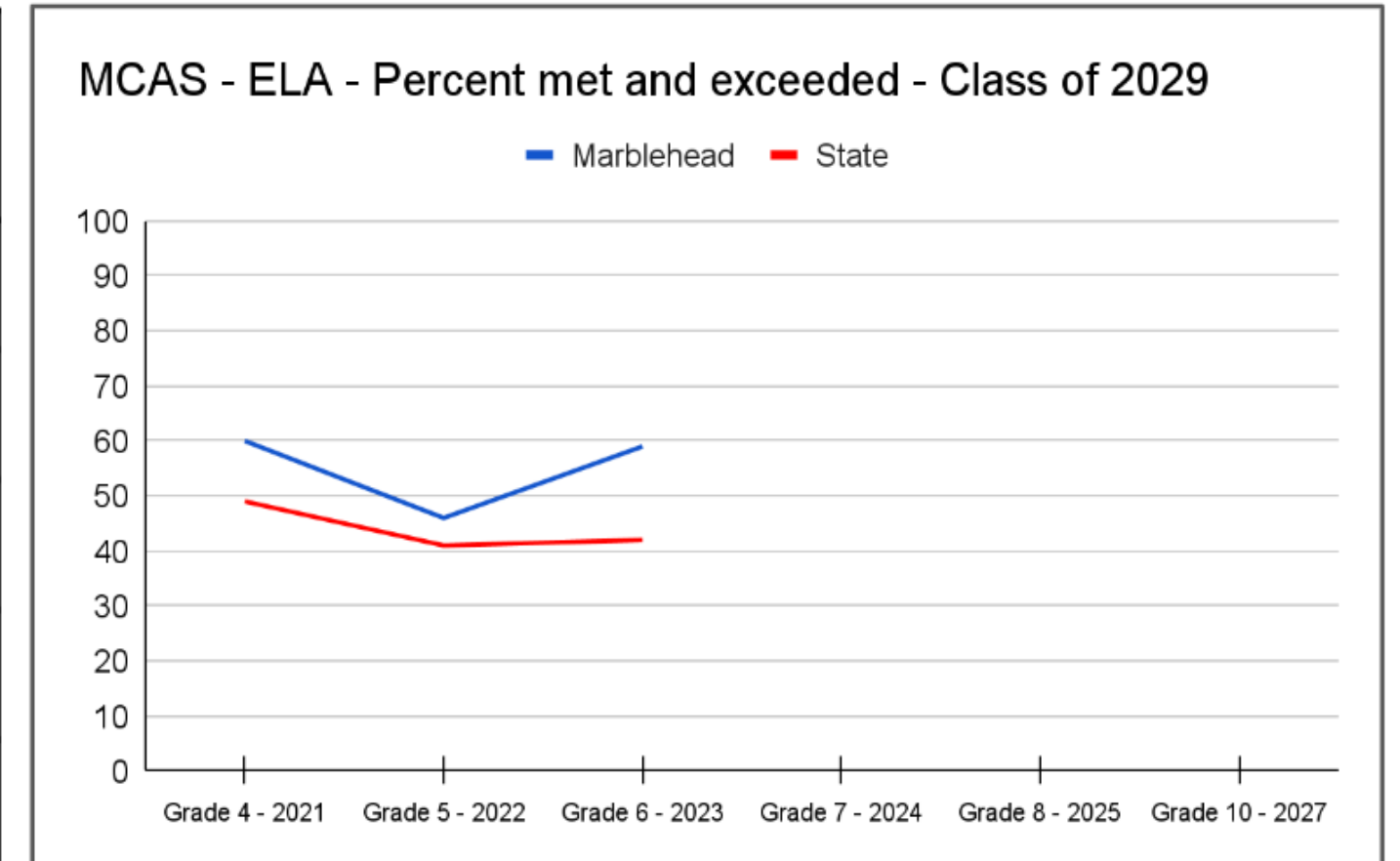
MCAS Math - Class of 2029	Grade 3 2020	Grade 4 2021	Grade 5 2022	Grade 6 2023
Met and Exceeded	X	47%	28%	61%
Exceeded	X	4%	1%	7%
Met	X	43%	27%	54%
Partially Met	X	42%	61%	30%
Did Not Meet	X	11%	11%	10%



Longitudinal Highlights

Class of 2029 - ELA

MCAS ELA- Class of 2029	Grade 3 2020	Grade 4 2021	Grade 5 2022	Grade 6 2023
Met and Exceeded	X	60%	46%	59%
Exceeded	X	7%	3%	15%
Met	X	53%	43%	44%
Partially Met	X	32%	49%	30%
Did Not Meet	X	8%	5%	12%





In Summary



- **Overall, the results of the Spring 2023 MCAS indicate that all Marblehead Public Schools demonstrated growth in the English Language Arts, Math, and Science and Technology/Engineering subject areas from the previous school year.**
- **We believe our academic growth is connected to the district-wide initiatives we have implemented and the dedication of our leaders and staff to ensuring student success.**



So what's next?



- **Celebrate recent growth**
- **Instructional Coaching Team expanded to the middle school**
- **New ELA curriculum in Gr. K-6 and Foundations adopted in Gr. 3**
- **MTSS systems expanded, gr. PreK-12**
- **Increased professional development of teachers**
- **Focus on using evidence and data to drive improvement**
- **Maximize student growth and positive outcomes through Professional Learning Communities**



MARBLEHEAD
PUBLIC SCHOOLS

Business Office
9 Widger Road,
Marblehead, MA 01945
phone: 781.639.3140
fax: 781.639.3149

MEMORANDUM

TO: Marblehead School Committee
FROM: Michelle Cresta
DATE: October 4, 2023
RE: Schedule of Bills for Approval

Included in this packet are the following Schedules of Bills for your consideration. The schedules and invoices have been uploaded to the shared drive.

Schedule	Amount
24104	\$ 16,948.27
24122	\$ 20,050.74
24128	\$ 2,085.25
24130	\$ 64,091.88
24138	\$ 42,579.06
24139	\$ 41,605.25
24167	\$ 44,873.03
24168	\$ 36,789.66
24186	\$ 24,512.05
24187	\$ 10,444.60
24188	\$ 31,839.54
24189	\$ 33,467.65
24191	\$ 11,760.25
24192	\$ 23,139.03
24193	\$ 32,055.16
24157	\$ 7,056.19
TOTAL	\$ 443,297.61

Suggested Motion:

Motion to approve the identified schedules of bills totaling \$443,297.61.

MEMO for the Marblehead School Committee

MHS Performing Arts Department to New York City

WHEN: Saturday & Sunday: January 13 & 14, 2024.

WHERE: New York City - see attached itinerary.

HIGHLIGHTS: 2 Broadway Shows, One World Observatory, 9/11 Museum, Spyscape Museum

WHO: This trip is open to all members of the MHS Performing Arts Department.

- Students in Treble Choir, Mixed Choir, Concert Band, Orchestra, and Drama classes.
- Students active in the Drama club (students in the musical/dramafest productions)
- Due to the massive cost of coach buses, we will cap the trip at 50 students (1 coach bus).
 - Registrations are on a first come first serve basis.
 - We'll keep a waiting list and consider adding a second coach should we receive sufficient registrations.

COST: \$709.00 per student.

TOUR COMPANY: Bob Rogers Travel



MARBLEHEAD HIGH SCHOOL PERFORMING ARTS
ANDREW SCOGLIO, ASHLEY SKEFFINGTON, RACHEL MICHOM & JULIE FRIAS: DIRECTORS
DESTINATION: NEW YORK
DATES: JANUARY 13-14, 2024
TRAVEL CONSULTANT: CANDACE BROWN

SUGGESTED ITINERARY AS OF OCTOBER 2, 2023

SATURDAY JANUARY 13

- 7:15 AM Motor coach arrives at **Marblehead High School**; begin loading
(1-56 PAX) **1920 2 Humphrey Street Marblehead, MA 01945**
- 8:00 AM Depart for **New York City, NY**
(228 miles; 4.5 hours drive time; 30 minutes for a stop)
- 1:00 PM Arrive in New York City at the **Time Warner Center**
PM Lunch on your own (student cost) ****Meet your BRT Tour Director Here****
- 2:00 PM Load motor coach & depart for the **Spyscape Museum**
See how your skills, agility and mental fortitude stack up in a series of immersive spy tests designed to test you to your limits!
- 2:30 PM Arrive & explore the museum
- 4:30 PM Load motor coach; depart for **Gayle’s Broadway Rose**
- 5:00 PM Enjoy a group dinner at **Gayle’s Broadway Rose**
- 7:00 PM Walk over to **The Nederlander Theatre**
- 8:00 PM Enjoy **“Shucked”**
- 10:45 PM Load motor coach; depart for a **New Jersey Area Hotel**
- 11:30 PM Arrive at the hotel & check in



SUNDAY JANUARY 14

- 7:00 AM Breakfast at the hotel
- 8:00 AM Check out of the hotel & load motor coach
- 8:30 AM Depart for **The National September 11 Memorial & Museum**
- 9:30 AM Group enters the museum
The 9/11 Memorial consists of two massive pools set within the original footprints of the Twin Towers with 30-foot waterfalls cascading down their sides. The names of nearly 3,000 men, women, and children killed in the attacks of Sept. 11, 2001 and Feb. 26, 1993 are inscribed in bronze on parapets around the edges of the waterfalls. Through its exhibitions, the Museum will attest to the triumph of human dignity over human depravity, and affirm a commitment to the fundamental value of every human life.
- AM Lunch in the area or at the museum (student cost)
- 11:15 AM Walk as a group to the **One World Observatory**
Start by ascending to the top of the tallest building in the Western Hemisphere in less than 60 seconds. Once you've arrived to the top experience three levels of innovation and inspiration, then look towards the horizon and feel the city's invincible spirit.
- 11:30 PM Group Entry Time – TBD
- 12:30 PM Load motor coach & depart for the **Winter Garden Theatre**
- 2:00 PM Enjoy **“Back to the Future”**
- 4:40 PM Show ends; receive a **boxed dinner** & load motor coach
- 5:00 PM Depart for home (228 miles; 4.5 hours drive time)
- 9:30 PM Arrive at **Marblehead High School** – Welcome home!



TOUR PROPOSAL

Every Bob Rogers Travel tour comes with these essentials:

- Motor coach operators that adhere to the strict USDOT standards for safety
- Payment options tailored to fit your group's needs and schedule (*including the option to have BRT automatically collect payments from travelers through our BRT Payments System*)
- Professional liability insurance and a consumer protection plan as recommended by the Student & Youth Travel Association
- The same high level of service and attention to detail which the company was founded on in 1981

YOU WANT TO GIVE YOUR STUDENTS THE WORLD. WE HELP YOU TAKE THEM THERE.



Founded by a former music educator, Bob Rogers Travel has been making student travel simple since 1981. Our team's singular focus is to allow you to keep yours – because when you can focus on inspiring students while we handle your trip, we all do our best work. Our team is comprised of educators, musicians and travel professionals. Together, we've planned over 6,000 memorable student travel experiences.

Founded by
a music
educator in
1981

carried over
600,000
travelers in over
7,000
trips

450 years
of performing arts
experience and
400 years
of travel experience
combined

every trip is
custom
no two trips
are alike

Contact **Candace Brown** at (800) 373-1423 ext. 209 or candace@bobrogerstravel.com





TOUR PROPOSAL

TOUR FEATURES

MOTOR COACH

- 1 - 56 passenger motor coach(es)
- Gratuities for your motor coach driver(s)

HOTEL

- 1 Nights' accommodations at a Local Area Hotel
- Breakfast at hotel
- Hotel Room for the Motor Coach Driver(s)
- All Students will pay Quad Occupancy Price (Quad Occupancy must be maximized)

MEALS

- Group Dinner at Gayle's Broadway Rose
- 1 - Boxed Meal

ATTRACTIONS

- Admission to the Spyscape
- Admission to the National September 11 Memorial and Museum
- Admission to the One World Observatory

THEATER/ATTRACTION TICKETS

- Ticket to Two (2) Broadway Shows (based on \$100 budget per show)

ADDITIONAL INCLUSIONS

- BRT Payments - Online Payment System
- 3 Complimentary Director Package(s) (based on single occupancy)
- BRT Drawstring bag for every participant
- BRT Video Souvenir & Tracking/Messaging App
- 1 Onsite Company Tour Director(s)

Contact **Candace Brown** at (800) 373-1423 ext. 209 or candace@bobrogerstravel.com



TOUR PROPOSAL

TOUR PRICING

Occupancy	Paying Participants
	50-53 Travelers
Quad	\$709
Triple	\$736
Double	\$761
Single	\$865

Non-inclusions/Options

- Meals stated at student cost
- Rental costs for chairs, stands, instruments or keyboards for performances/clinics (BRT can assist in arranging the rental of these items)
- TripMate offers a specially priced Enhanced Trip Protection which includes a CFAR* (Cancel For Any Reason) feature for BRT travelers. *CFAR coverage covers 75% of the nonrefundable trip cost. Trip cancellation must be made with BRT 2 days or more prior to scheduled departure. Traveler must "opt in" to this plan within 14 days of initial deposit to be eligible for CFAR coverage. This benefit is not available for residents in New York.

Contact Candace Brown at (800) 373-1423 ext. 209 or candace@bobrogerstravel.com

Associations



- Student Youth Travel Association (SYTA)
- National Tour Association (NTA)
- Official Sponsor of Music for All
- American Bus Association (ABA)
- American Choral Directors Association (ACDA)
- Members of 25 State Music Associations
- Official Sponsor of Make-A-Wish
- Producer of the Thanksgiving Parade of Bands

Accolades

- Top Producer for Broadway.com (since 2010)
- Top Producer for the Chicago Symphony Orchestra (since 2013)
- A Disney Youth Programs PremEar Travel Planner
- Top Producer for Disney Performing Arts OnStage at Walt Disney World (since 2011)
- Top Producer for Festival Disney (since 2014)
- Universal Orlando Resort Preferred Youth Travel Planner



Walt Disney World® Resort
PARTNERS AWARD

Presented to Bob Rogers Travel

For exemplary leadership and achievement within the student travel industry providing quality experiences and demonstrating business integrity, while embracing and promoting the Magic of Disney.



Presented to an ABA member demonstrating that it has what it takes to make an impact in the group travel industry—today.

Presented to an ABA member demonstrating that it has what it takes to make an impact in the group travel industry—today.



PERFORMING ARTS
TOP PRODUCER

Financial Protection and Insurance

When you travel with BRT your investment is protected

- Professional liability insurance
- Optional Trip Cancellation Insurance
- Consumer Protection Plan

Book With Confidence ...

With the BRT Trip Assurance Program

Student group travel typically is planned months or years in advance. It requires significant investments by educators, parents, students and BRT, in both time and money.

We want you to know that your financial investments are in good hands. With the BRT Trip Assurance Program, if your group must cancel its trip, we will go the extra mile to ensure that the highest refund possible goes back to you.

How Does the BRT Trip Assurance Program Work?



At BRT, we customize each trip to the needs of our educators and their students.

A single trip can require coordination with several partners, from transportation companies to hotels to performance venues, with each partner having policies covering cancellations and refunds. During trip planning, we will proactively communicate cancellation deadlines to the group leader.

Should your trip have to cancel for reasons beyond your control, we will work with each of these partners to get you the highest refund possible. As you get closer to your trip's departure, the non-refundable amounts paid by BRT to vendors will continue to increase. However, if do you need to cancel close to departure, BRT will always work with these vendors to get the highest refund possible.



Every newly booked trip is a part of the Trip Assurance Program.

Additional Insurance?

Help guarantee the best refund by including "**Cancel for Any Reason (CFAR)**" insurance on your trip. This coverage will refund **up to 75%**, and when coupled with our dedicated efforts typically results in a total combined refund of **80% – 95%**. Contact us to learn more or to add CFAR Insurance to your trip.



Our Promise:

If your group cancels its trip for reasons beyond its control, we will be your advocate to get you the highest refund possible.



Program Summary:

With very few exceptions, if and when the full group chooses to cancel:

- **91 days or more** from trip departure date: **100% refund** less any non-refundable vendor payments.
- **90 days or fewer** from trip departure date: refund less any non-refundable vendor payments and a 15% service charge.

To learn more about the **BRT Trip Assurance Program** visit:
bobrogerstravel.com/trip-assurance



Bob Rogers Travel

Schedule of Insurance Benefits	Maximum Benefit Amount	Standard Plan F561S	Enhanced Plan F561E
Cancel For Any Reason Benefit*	75% of Non-Refundable Trip Cost		✓
Trip Cancellation**	up to 100% of the non-refundable insured Trip Cost	✓	✓
Single Supplement	included	✓	✓
Trip Interruption**	up to 100% of the non-refundable insured Trip Cost	✓	✓
Single Supplement	included	✓	✓
Additional Trip Interruption	Included under Trip Interruption benefit Maximum	✓	✓
Travel Companion Hospitalization	up to \$150 Per Day, Limited to 5 Days	✓	✓
Missed Connection	\$500	✓	✓
Trip Delay	up to \$150 Per Day, to a Maximum of \$750	✓	✓
Accident & Sickness Medical Expense	\$25,000	✓	✓
Dental Expense Sublimit	\$750	✓	✓
Medical Evacuation & Repatriation of Remains	\$100,000	✓	✓
Additional Medical Evacuation:	included	✓	✓
Transportation Of Children/Child	included	✓	✓
Bedside Visit Transportation to Join You	included	✓	✓
Political or Security Evacuation & Natural Disaster Evacuation	\$25,000	✓	✓
Baggage and Personal Effects	\$1,500	✓	✓
Passport, Visa or Other Travel	\$100	✓	✓
Documents Replacement	\$50	✓	✓
Credit Card Charges and Interest Per Article Limit	up to \$300	✓	✓
Items Subject to Special Limitations	\$600 Maximum Combined	✓	✓
Baggage Delay	\$300	✓	✓
	Up to \$50 to expedite the Return	✓	✓

*Not available to NY Residents. Additional terms apply.

**Benefits are only payable if trip is cancelled/interrupted due to a covered peril.

Plan	Rate
Standard (F561S)	4.55% of Trip Cost
Enhanced (F561E)	7.60% of Trip Cost

Contains Insurance and Non-Insurance Assistance Services.

CANCEL FOR ANY REASON BENEFIT* - If You cancel Your Trip for any reason not otherwise covered by this Plan, benefits will be paid for 75% of the unused, forfeited, prepaid non-refundable Payments or Deposits You paid for Your Trip provided: a) Your payment for this Plan is received within 14 days of the date Your initial Payment or Deposit for Your Trip is received; and b) You cancel Your Trip no later than 2 days prior to the Scheduled Departure Date of Your Trip. This Cancel for Any Reason Benefit does not cover the failure of the Retail Travel Supplier to provide the bargained-for Travel Arrangements due to cessation of operations for any reason. These benefit(s) will not duplicate any other benefits payable under the plan or any coverage(s) attached to the plan.

TRIP CANCELLATION - Protects the unused, forfeited, prepaid non-refundable Payments or Deposits for the Travel Arrangements You purchased for Your Trip in the event You have to cancel due to a covered reason.

TRIP INTERRUPTION - Provides You with a reimbursement for the unused, forfeited, prepaid non-refundable Payments or Deposits for land or water Travel Arrangements for Your Trip, plus the Additional Transportation Cost paid, if Your Trip is interrupted for a covered reason.

MISSED CONNECTION - Provides You with a reimbursement for the unused, forfeited, prepaid non-refundable Payments or Deposits paid to the Travel Supplier for the land or water Travel Arrangements You purchased for Your Trip, plus the additional transportation cost to join Your trip, if You miss Your Trip departure because Your arrival at the Trip destination is delayed for 3 consecutive hours or more for a covered reason.

TRIP DELAY - Assists with Reasonable Expenses incurred when You are delayed 8 consecutive hours or more while en route to or from or during the course of Your Trip for a covered reason.

ACCIDENT & SICKNESS MEDICAL EXPENSE - Provides Medical Expense benefits for a covered Sickness or covered Injury incurred while on Your Trip.

MEDICAL EVACUATION & REPATRIATION OF REMAINS - Among other things, this reimburses transportation expenses incurred to transport you to the nearest medical facility where treatment is available if you incur a sickness or injury that is acute, severe or life threatening during Your Trip.

POLITICAL OR SECURITY EVACUATION & NATURAL DISASTER EVACUATION - Can cover reasonable Political or Security Evacuation or reasonable Natural Disaster Evacuation expenses and Related Costs incurred for Your transportation, if You must interrupt Your Trip for a covered Political or Security Event or Natural Disaster Event and while traveling outside Your Home Country.

BAGGAGE & PERSONAL EFFECTS - Provides reimbursement when your Baggage or personal belongings are damaged, lost or stolen during Your Trip.

BAGGAGE DELAY - Provides reimbursement for the purchase of reasonable additional clothing and personal articles purchased by You if Your Baggage is delayed or misdirected by a Common Carrier for at least 12 consecutive hours or more.

Waiver of the Pre-Existing Medical Condition Exclusion: exclusion for Pre-Existing Condition will be waived provided: (a) Your payment for this Plan is received within 14 days of the date Your initial Payment or Deposit for Your Trip is received; and (b) You are medically able and not disabled from travel at the time Your plan cost is paid based on assessment of a Physician.

*See back for exclusions & limitations.



20230602-2934866

Exclusions and Limitations

Unless otherwise shown below, these exclusions apply to You, Your Traveling Companion, Family Member scheduled and booked to travel with You. The following exclusion(s) apply(ies) to the Trip Cancellation and Trip Interruption and Medical Expense. We will not pay for any loss or expense caused due to, arising or resulting from: **1.** a Pre-Existing Medical Condition, as defined in the plan. Death resulting from a Pre-Existing Medical Condition will not be excluded. Death must occur prior to the termination date of the benefit under which the claim is being made. The following exclusions apply to the Medical and Dental Expense benefits. We will not pay for any loss or expense caused due to, arising or resulting from: **1.** routine physical examinations or routine dental care; **2.** traveling for the purpose or intent of securing medical treatment or advice; **3.** any Trip taken against the advice of a Physician and any losses occurred during such Trip; **4.** Elective Treatment and Procedures; **5.** care or treatment which is not Medically Necessary, except for related reconstructive surgery resulting from trauma, infection or disease that first manifests or occurred during Your Trip; **6.** any medical service provided by You, a Family Member, or Traveling Companion; **7.** any treatment or medication which, at the time of Your Scheduled Departure Date, is required to be continued during Your Trip; **8.** Alcohol or substance abuse or treatment for the same including admittance to a rehab facility; **9.** Normal pregnancy (except Complications of Pregnancy) or childbirth, except as specifically covered under Trip Cancellation or Trip Interruption or elective abortion; **10.** a Mental, Nervous or Psychological Condition or Disorder unless Hospitalized or Partially Hospitalized while the plan is in effect. Hospitalized or Partially Hospitalized requirement does not apply to dementia when death results; **11.** any loss that results from an illness, disease or other condition, event or circumstance that occurs at a time when the plan is not in effect for You; **12.** Your participation in Adventure or Extreme Activities, riding or driving in races, or participation in speed or endurance competition or events, except as a spectator; **13.** diving if You are not certified to dive and a dive master is not present during the dive; **14.** Your participation in an organized athletic or sporting competition, contest, or stunt under contract in exchange for an agreed-upon salary or compensation. This does not include athletes participating in exchange for a scholarship or tuition.

In addition to any applicable benefit-specific exclusion, the following general exclusions apply to all losses and benefits. We will not pay for any loss or expense caused due to, arising or resulting from: **1.** suicide, attempted suicide or any intentionally self-inflicted injury of You, a Traveling Companion, Family Member or Business Partner booked and scheduled to travel with You, while sane or insane; **2.** being under the influence of drugs, marijuana or narcotics, unless administered upon the advice of a Physician as prescribed; **3.** activities, losses, or claims involving or resulting from possession, production, processing, sale, or use of marijuana, illegal drugs, alcohol or substances are excluded from coverage; **4.** war or act of war, including invasion, acts of foreign enemies, hostilities between nations (whether declared or undeclared), or civil war, except as the plan specifically provides otherwise; **5.** the commission of or attempt to commit a felony or being engaged in an illegal occupation by You, a Traveling Companion, Family Member, or Business Partner. The sole exception to this exclusion is for situations where a Family Member commits, or attempts to commit, an act of violence against another Family Member. In such cases, the Family Member who is the victim, or the intended victim, of the act of violence is still eligible to have his or her loss or losses covered under the plan; **6.** piloting or learning to pilot or acting as a member of the crew of any aircraft; **7.** a loss or damage caused by detention, confiscation or destruction by customs; **8.** failure of any tour operator, Common Carrier, or other travel entity, person or agency to provide the bargained-for Travel Arrangements for reasons other than Bankruptcy or Default. Important: there is no coverage for losses due to, arising or resulting from the Bankruptcy or Default of Your Travel Supplier or any entity that sold, solicited, negotiated, offered or disseminated this plan to You or Your Traveling Companion.

Additional Limitations and Exclusions Specific to Baggage and Personal Effects.

There are also specific limitations for Political or Security Evacuation and Natural Disaster Evacuation.

Excess Insurance Limitation: Insurance provided by this plan shall be in excess of all other valid and collectible insurance or indemnity or as required by state law. If at the time of the occurrence of any loss there is other valid and collectible insurance or indemnity in place, We shall be liable only for the excess of the amount of loss, over the amount of such other insurance or indemnity, and applicable deductible. Recovery of losses from other parties does not result in a refund of plan cost paid.

Additional Terms and Conditions apply. Please refer to your plan document for complete description of coverage.

Information You Need To Know:

This advertisement contains highlights of the plans developed by Trip Mate, Inc., which include travel insurance coverages underwritten by United States Fire Insurance Company, Principal Office located in Morristown, New Jersey, under form series T7000 et al, T210 et al and TP-401 et al and non-insurance Travel Assistance Services provided by Generali Global Assistance and FootprintID®. The terms of insurance coverages in the plans may vary by jurisdiction and not all insurance coverages are available in all jurisdictions. **Insurance coverages in these plans are subject to terms, limitations and exclusions including an exclusion for pre-existing medical conditions.** In most states, your travel retailer is not a licensed insurance producer/agent and is not qualified or authorized to answer technical questions about the terms, benefits, exclusions and conditions of the insurance offered or to evaluate the adequacy of your existing insurance coverage. Your travel retailer may be compensated for the purchase of a plan and may provide general information about the plans offered, including a description of the coverage and price. The purchase of travel insurance is not required in order to purchase any other product or service from your travel retailer. CA DOI toll free number is 800-927-4357. The cost of your plan is for the entire plan, which consists of both insurance and non-insurance components. Individuals looking to obtain additional information regarding the features and pricing of each travel plan component, please contact Trip Mate, Inc. (dba Trip Mate Insurance in CA and UT; CA license #0805270); P.O. Box 527, Hazelwood, MO 63042; 1-844-777-6856; assitancefees@tripmate.com. While Trip Mate, Inc. markets the travel insurance in these plans on behalf of USF, non-insurance components of the plans were added to the plans by Trip Mate, Inc., and Trip Mate, Inc. does not receive compensation from USF for providing the non-insurance components of the plans.



20230602-2934866

We have included the best group travel app for your trip.



Safety - Communication - Memories

App Features

Group Mapping

- Locate Travelers
- Navigate with Confidence

Group Messaging

- The Entire Group at Once
- Easily Create Sub-Groups
- Individual Travelers
- No phone #s or Email Addresses



Help Manage Your Trip

Group Photo Gallery

- Share pictures with the Group
- Download to Any Device
- Send to Family & Friends

Share Documents

- Itineraries
- Safety Protocols
- Checklists
- Unlimited PDFs, Excel, Docs

It's a Keepsake Souvenir

Plus **Storytelling videos**
Made from YOUR GROUP'S Pictures

To Have for a Lifetime

- ✓ **Service included with your trip!** Nothing more to pay. Just share your photos during your tour, and we do the rest.
- ✓ **Everyone on the trip** receives access to download the group's keepsake video & photos.
- ✓ **Share the video** with parents and students to promote your next trip!

BRT
Bob Rogers Travel

Your group will be creating memories of a lifetime.

They are worth keeping, and why we made this part of your trip. We hope you enjoy your trip and the lifetime of memories.

Powered by

How it Works: Private. No emails or phone numbers needed.

- 1.** We provide you with a username & password to login to our app and website to upload trip photos.
- 2.** Your group uploads photos with our app or website while and/or after you travel. Family at home can login and follow along.
- 3.** We create your video from the edited photos. Both can only be accessed with your group's username & password.
- 4.** We send users a notification to view the keepsake videos and all the photos that were shared by everyone to download to keep for a lifetime.



Directors receive everything on a USB Flash Drive

Benefits

- | | | |
|---|---|---|
| Directors:
The video reinforces the educational purpose of your trip and can be used to promote future trips. | Travelers:
Relive their once-in-a-lifetime experience and enjoy a keepsake video for years to come! | Those at Home:
Virtually travel along at home during the trip by viewing the shared photos and see the wonders of travel. |
|---|---|---|





MARBLEHEAD
PUBLIC SCHOOLS

Business Office
9 Widger Road,
Marblehead, MA 01945
phone: 781.639.3140
fax: 781.639.3149

MEMORANDUM

TO: Marblehead School Committee
FROM: Michelle Cresta, Acting Superintendent
DATE: October 4, 2023
RE: Declaration of Surplus Goods – Curriculum Items

Attached please find a listing of curriculum items which have been determined to be surplus goods. If any item has a remaining useful life, it will be offered to other school districts free of charge.

Please consider taking action to declare these items as surplus goods. The recommended motion is as follows:

Motion to declare the curriculum items listed as surplus goods.

**Marblehead Public Schools
Request – Surplus Items**

Surplus Items at Glover School

Item	Quantity
Units of Study in Reading or Writing Kits	30
Developmental Reading Assessment (DRA-2) Kits	2

Surplus Items at Brown School

Item	Quantity
Units of Study in Writing Kits	25
Journeys Reading Textbooks	48
Assorted Outdated Bookroom Texts	various

**Marblehead Public Schools
Request - Surplus Items**

Surplus Items at Village School

Item	Quantity
Units of Study in Reading or Writing Kits <i>Both older versions and ones from 3 years ago</i>	50
Write Source books	69

Item	Quantity
Outdated picture and chapter books	250



MARBLEHEAD
PUBLIC SCHOOLS

Business Office
9 Widger Road,
Marblehead, MA 01945
phone: 781.639.3140
fax: 781.639.3149

MEMORANDUM

TO: Marblehead School Committee
FROM: Michelle Cresta, Acting Superintendent
DATE: October 4, 2023
RE: School Owned Properties

The following is a listing of School Department properties. This listing is being provided as reference material for the discussion scheduled to occur at the School Committee meeting of October 5, 2023.

Marblehead School Department Property Listing			
Location	Description	Owner	Status
40-42 BALDWIN RD BEACON ST	Brown School lot with building	TOWN OF MARBLEHEADSCHOOL DEPARTMENT	Returned to town
3 BROOK RD	Eveleth School lot with building	TOWN OF MARBLEHEADSCHOOL DEPARTMENT	
2 HUMPHREY ST SMITH ST	High School lot with building	TOWN OF MARBLEHEADSCHOOL DEPARTMENT	
93 VILLAGE ST VILLAGE ST	Village School lot with building	TOWN OF MARBLEHEADSCHOOL DEPARTMENT	
JERSEY ST	Village School fields	TOWN OF MARBLEHEADSCHOOL DEPARTMENT	
JERSEY ST	Village School grounds	TOWN OF MARBLEHEADSCHOOL DEPARTMENT	
BYORS RD	Village School grounds	TOWN OF MARBLEHEADSCHOOL DEPARTMENT	
79 MAPLE ST	Glover School lot with building	TOWN OF MARBLEHEADSCHOOL DEPARTMENT	
217 PLEASANT ST VINE ST	Veterans School lot with building	TOWN OF MARBLEHEADSCHOOL DEPARTMENT	
1 TURNER RD	Veterans School field	TOWN OF MARBLEHEADSCHOOL DEPARTMENT	
21 LINCOLN AV	Coffin School lot with building	TOWN OF MARBLEHEADSCHOOL DEPARTMENT	
21 LINCOLN AV	Land near Coffin School grounds	TOWN OF MARBLEHEADSCHOOL DEPARTMENT	
50 ELM ST	Gerry School	TOWN OF MARBLEHEADSCHOOL DEPARTMENT	Returned to town
50 ELM ST	Gerry School	TOWN OF MARBLEHEADSCHOOL DEPARTMENT	Returned to town



Brown School, 40-42 Baldwin Road

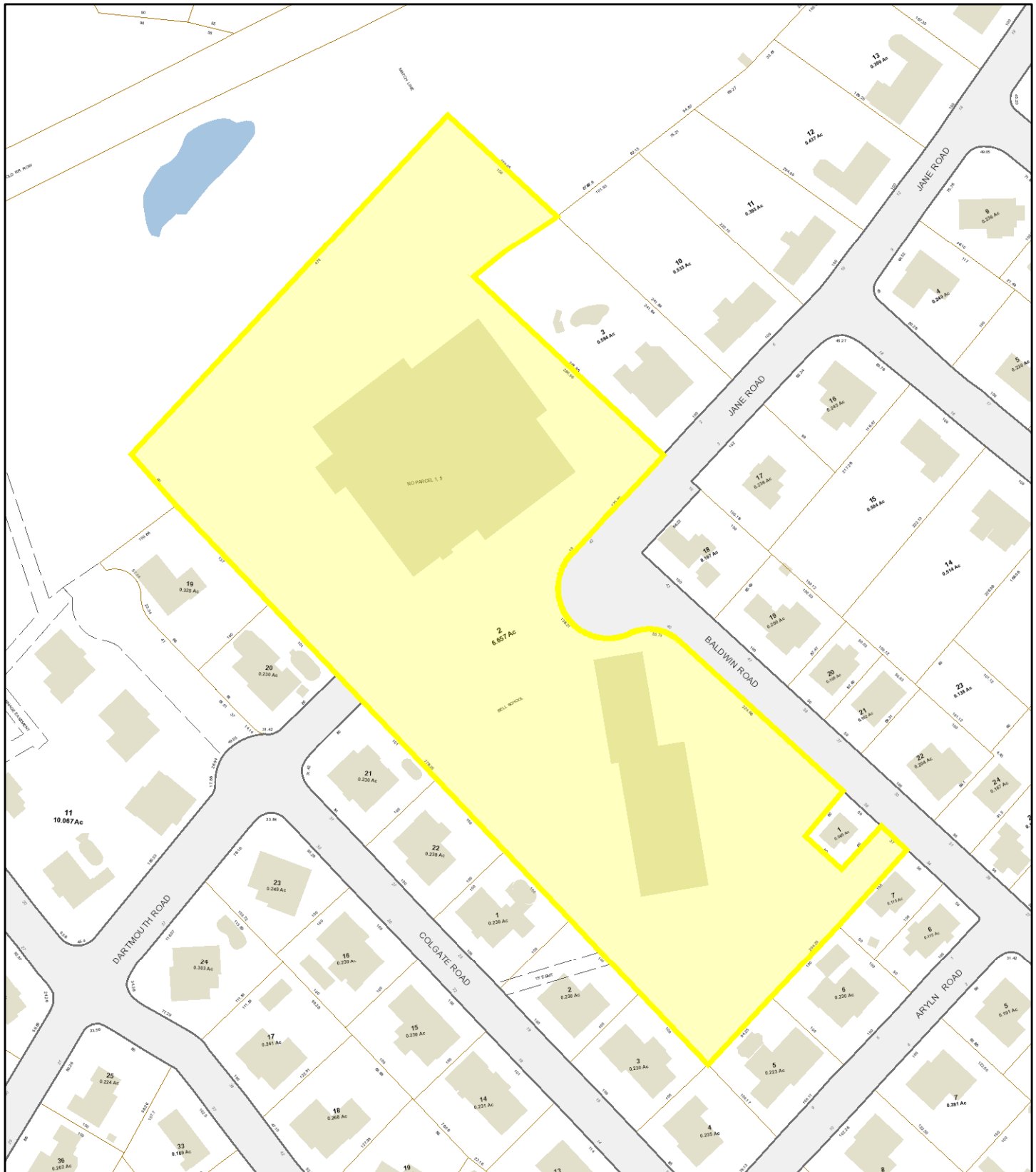
Marblehead, MA

1 inch = 138 Feet



September 26, 2023

www.cai-tech.com



Data shown on this map is provided for planning and informational purposes only. The municipality and CAI Technologies are not responsible for any use for other purposes or misuse or misrepresentation of this map.



Eveleth School, 3 Brooke Road

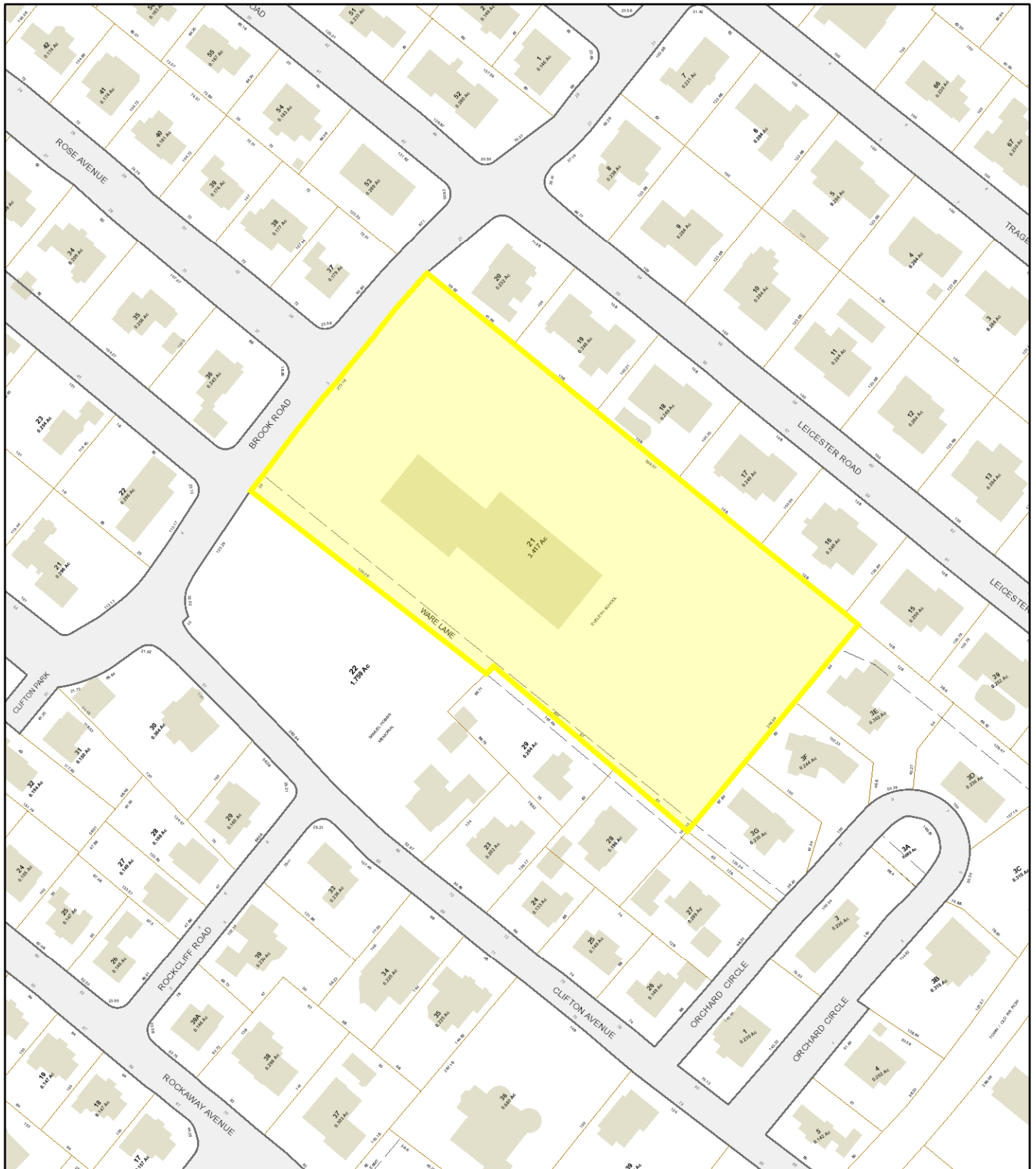
Marblehead, MA

1 inch = 138 Feet



September 26, 2023

www.cai-tech.com



Data shown on this map is provided for planning and informational purposes only. The municipality and CAI Technologies are not responsible for any use for other purposes or misuse or misrepresentation of this map.



High School, 2 Humphrey Street

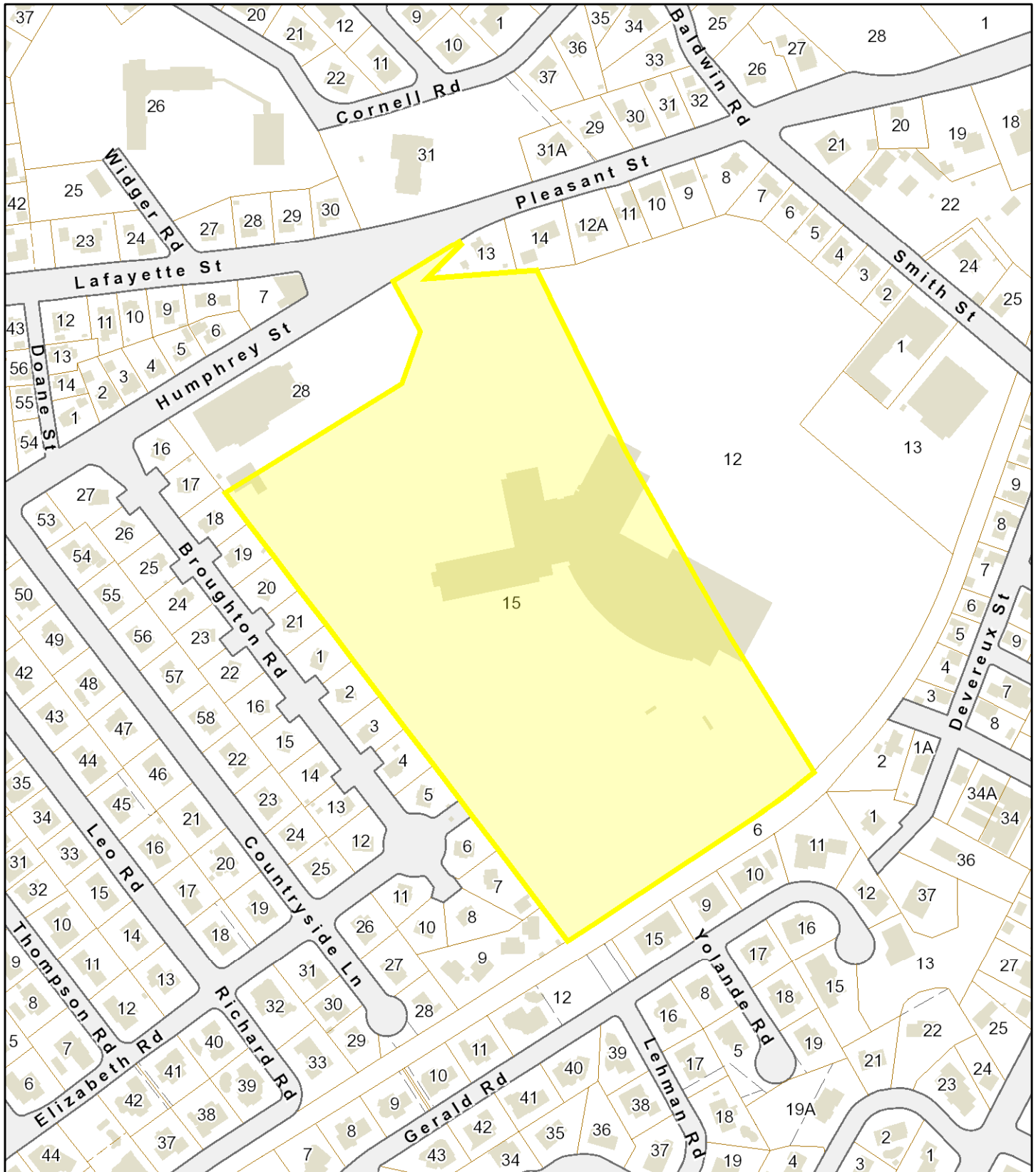
Marblehead, MA

1 inch = 277 Feet



September 26, 2023

www.cai-tech.com



Data shown on this map is provided for planning and informational purposes only. The municipality and CAI Technologies are not responsible for any use for other purposes or misuse or misrepresentation of this map.



High School, Smith Street

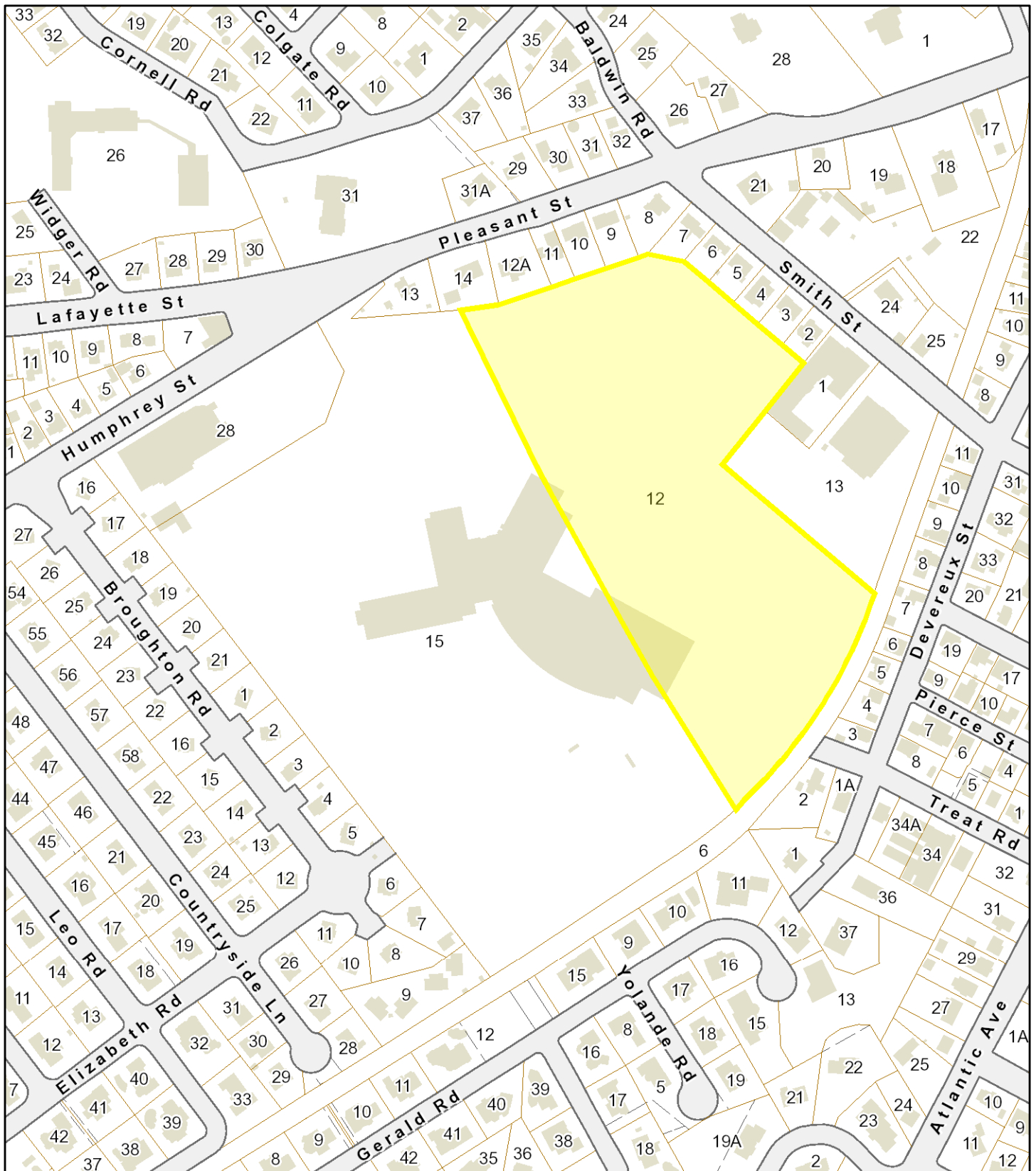
Marblehead, MA

1 inch = 277 Feet



September 26, 2023

www.cai-tech.com



Data shown on this map is provided for planning and informational purposes only. The municipality and CAI Technologies are not responsible for any use for other purposes or misuse or misrepresentation of this map.



Village School, 93 Village Street

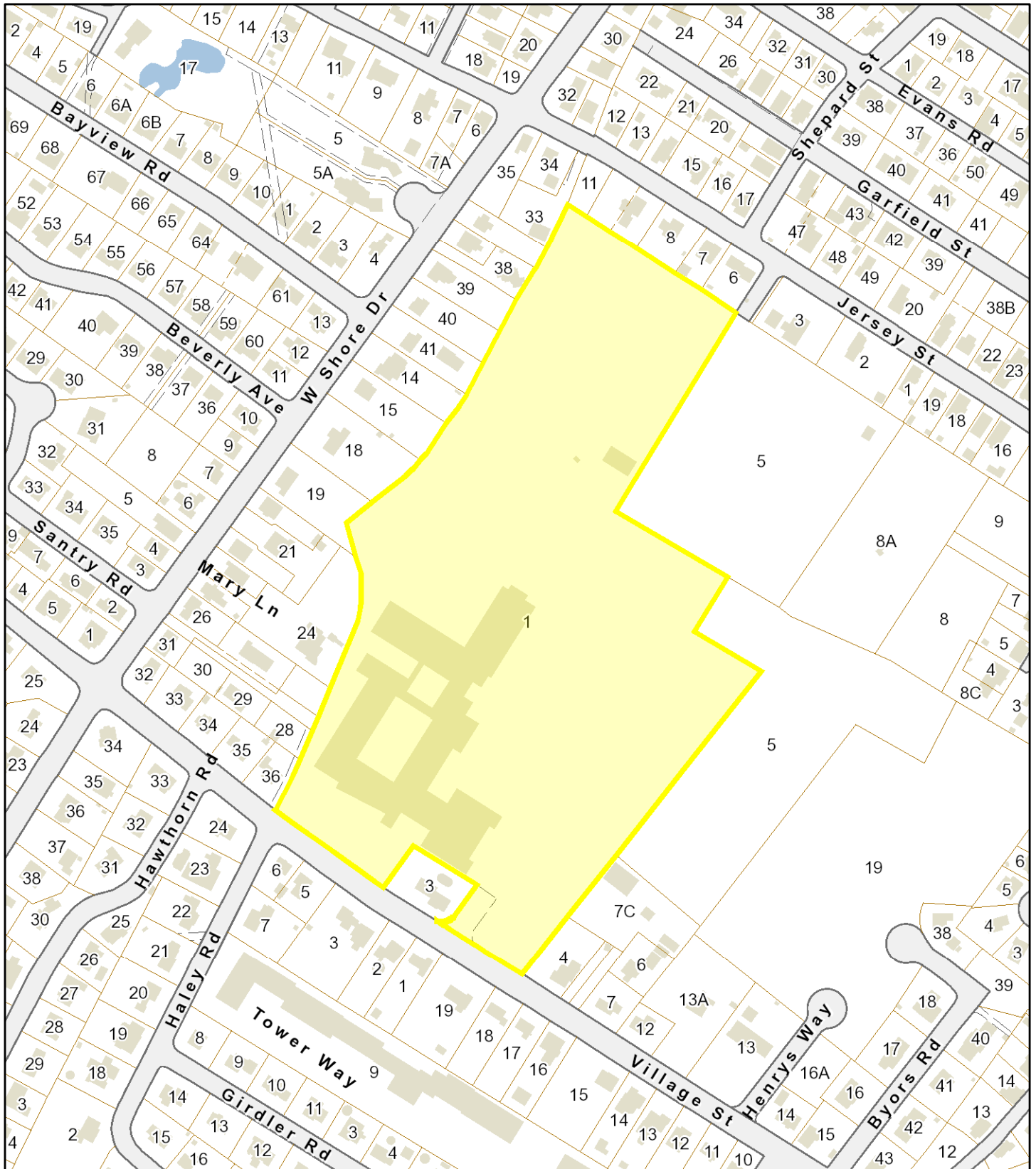
Marblehead, MA

1 inch = 277 Feet



September 26, 2023

www.cai-tech.com



Data shown on this map is provided for planning and informational purposes only. The municipality and CAI Technologies are not responsible for any use for other purposes or misuse or misrepresentation of this map.



Village School Grounds, Village Street

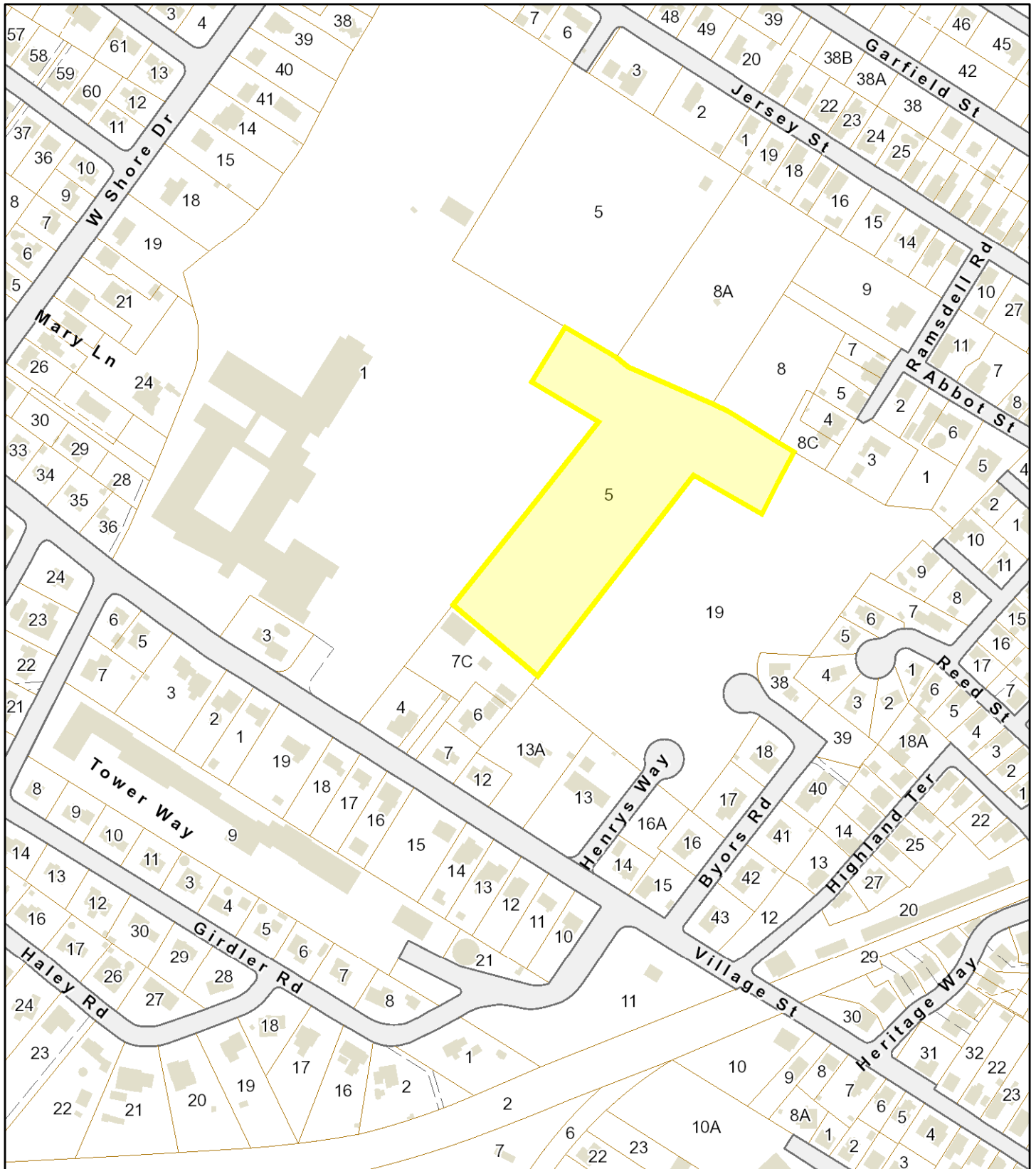
Marblehead, MA

1 inch = 277 Feet



September 26, 2023

www.cai-tech.com



Data shown on this map is provided for planning and informational purposes only. The municipality and CAI Technologies are not responsible for any use for other purposes or misuse or misrepresentation of this map.



Village School Grounds, Jersey Street

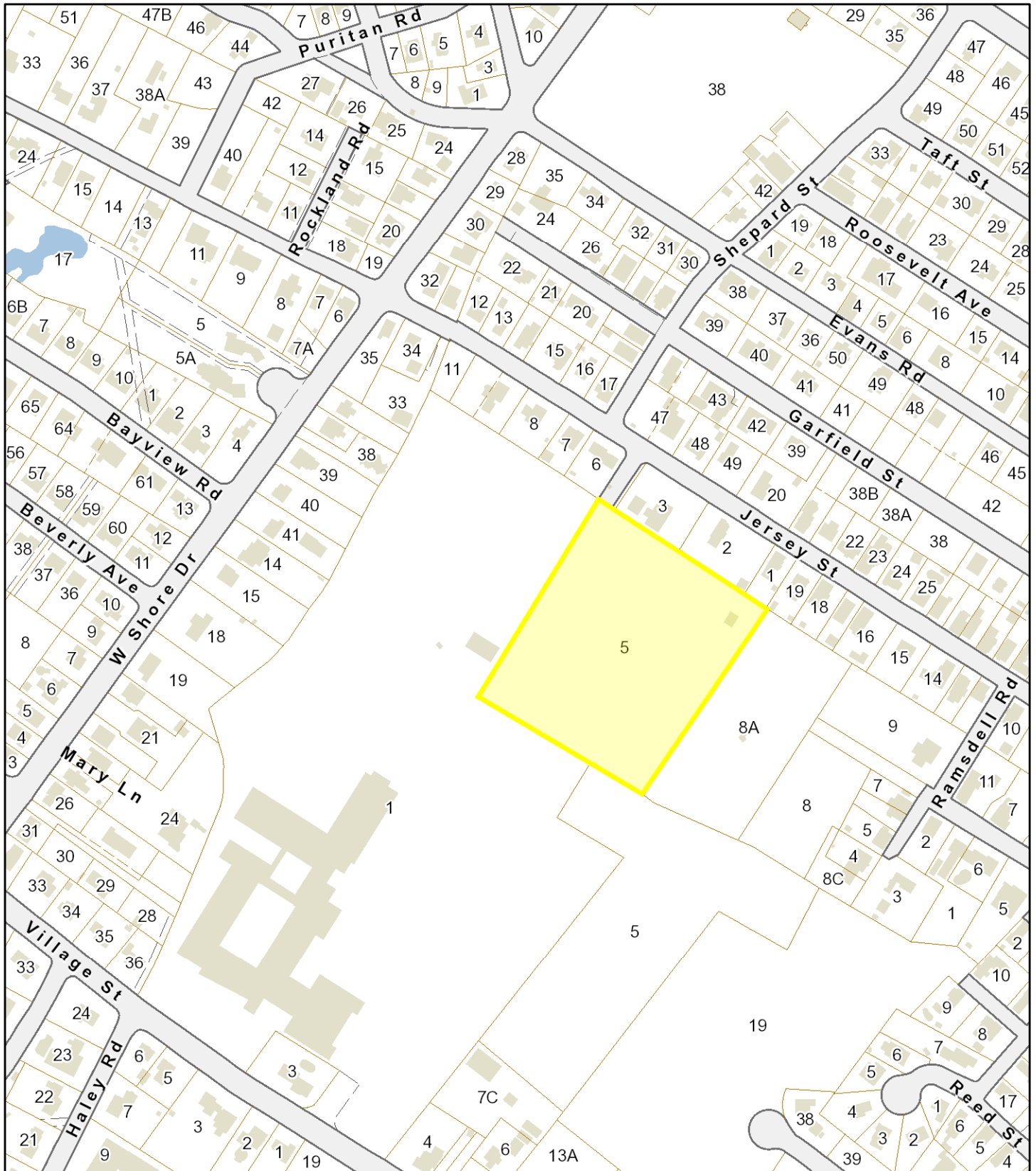
Marblehead, MA

1 inch = 277 Feet



September 26, 2023

www.cai-tech.com



Data shown on this map is provided for planning and informational purposes only. The municipality and CAI Technologies are not responsible for any use for other purposes or misuse or misrepresentation of this map.



Village School Grounds, Jersey Street (2)

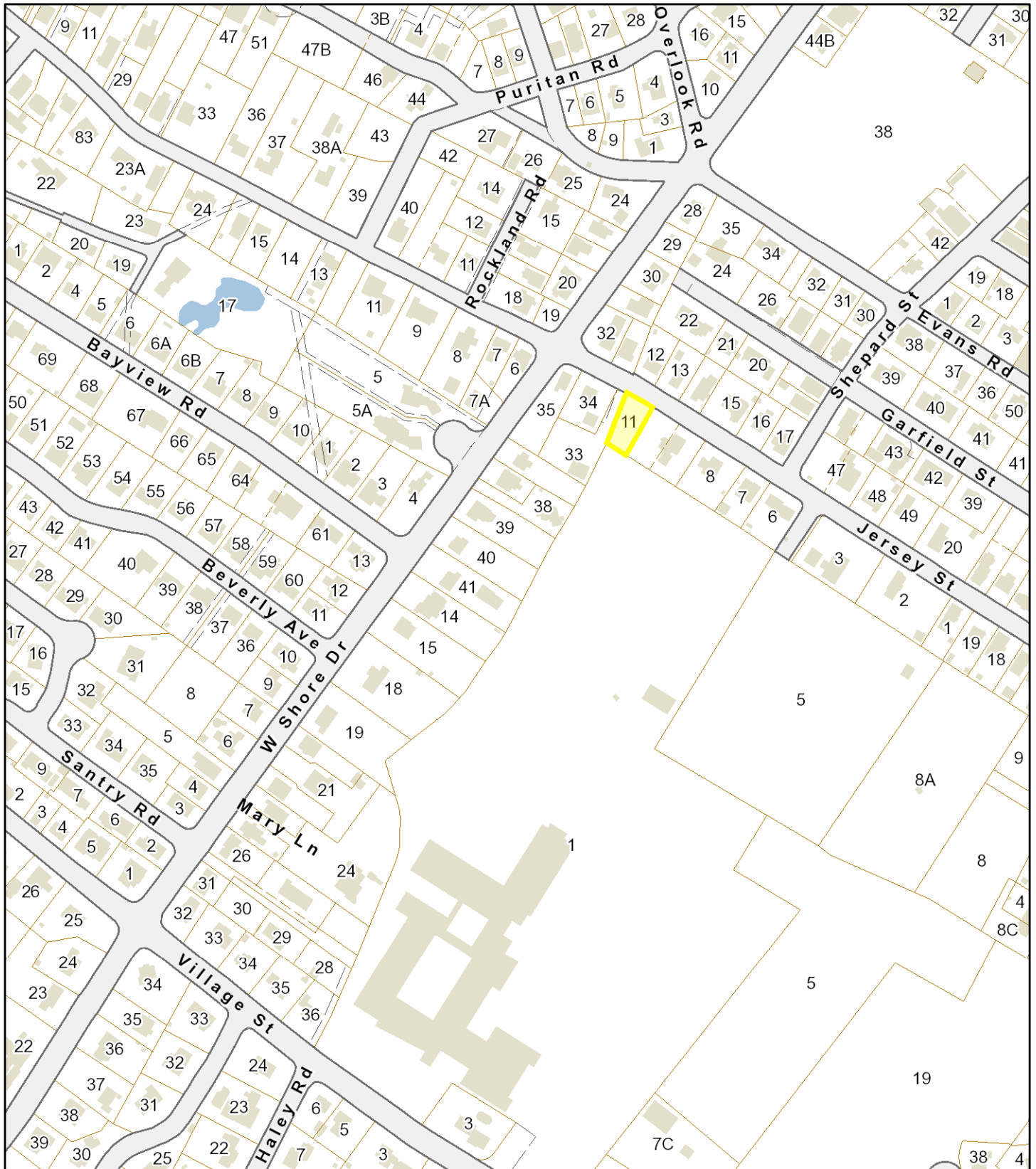
Marblehead, MA

1 inch = 277 Feet



September 26, 2023

www.cai-tech.com



Data shown on this map is provided for planning and informational purposes only. The municipality and CAI Technologies are not responsible for any use for other purposes or misuse or misrepresentation of this map.



Village School Grounds, Byors Road

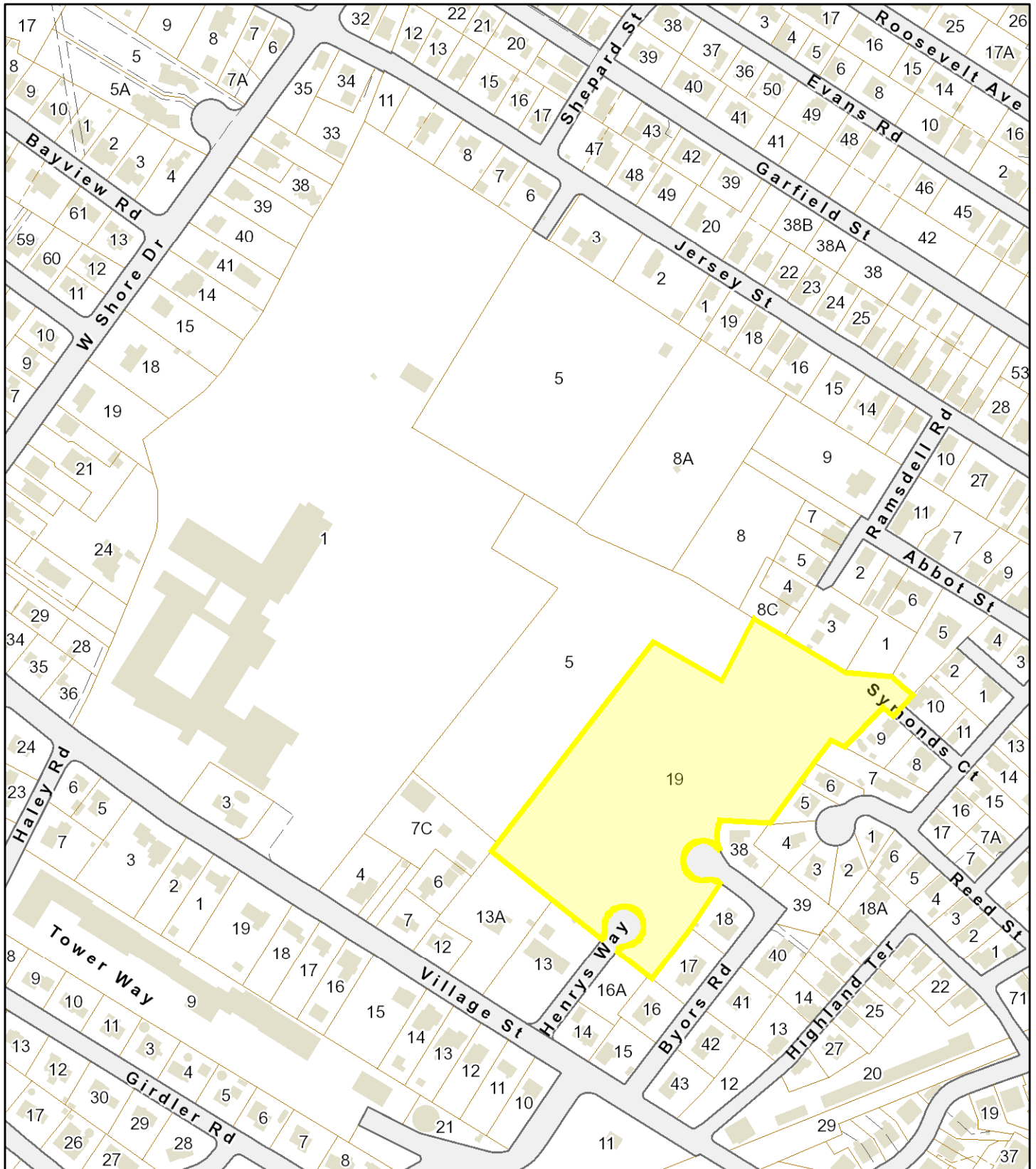
Marblehead, MA

1 inch = 277 Feet



September 26, 2023

www.cai-tech.com



Data shown on this map is provided for planning and informational purposes only. The municipality and CAI Technologies are not responsible for any use for other purposes or misuse or misrepresentation of this map.



Glover School, 79 Maple Street

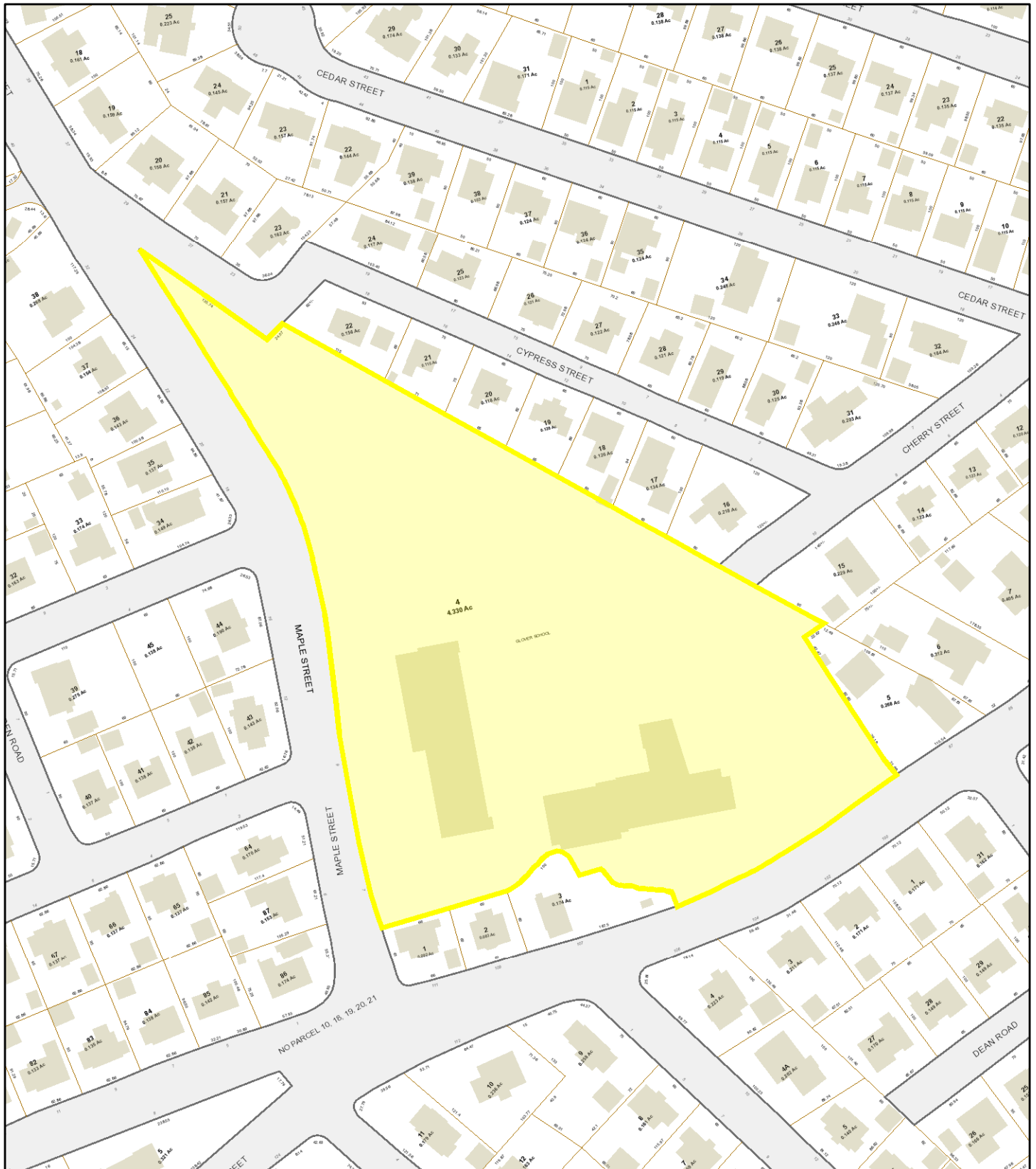
Marblehead, MA

1 inch = 138 Feet



September 26, 2023

www.cai-tech.com



Data shown on this map is provided for planning and informational purposes only. The municipality and CAI Technologies are not responsible for any use for other purposes or misuse or misrepresentation of this map.



Veterans School, 217 Pleasant Street

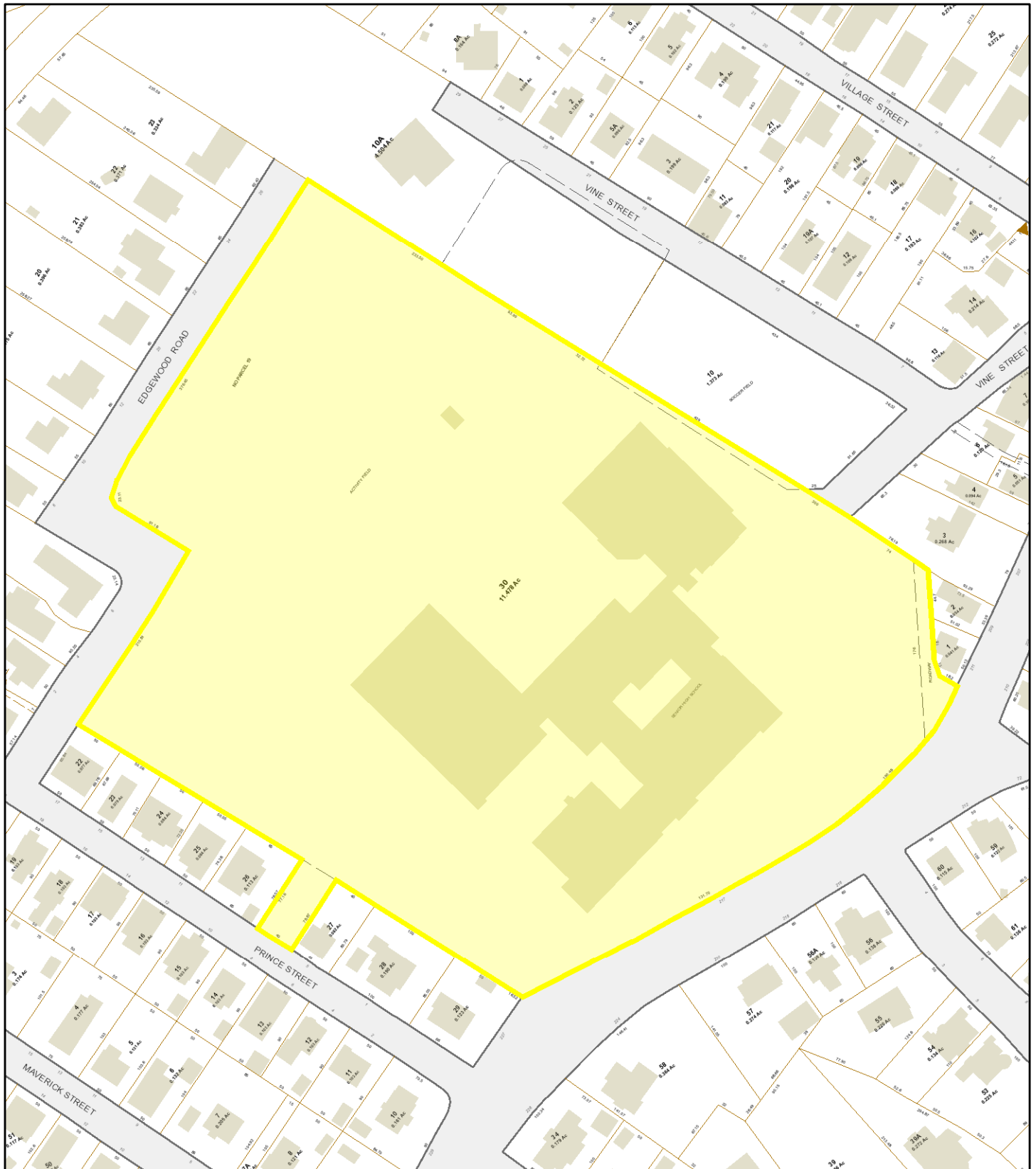
Marblehead, MA

1 inch = 138 Feet



September 26, 2023

www.cai-tech.com



Data shown on this map is provided for planning and informational purposes only. The municipality and CAI Technologies are not responsible for any use for other purposes or misuse or misrepresentation of this map.



Veterans School Grounds, Vine Street

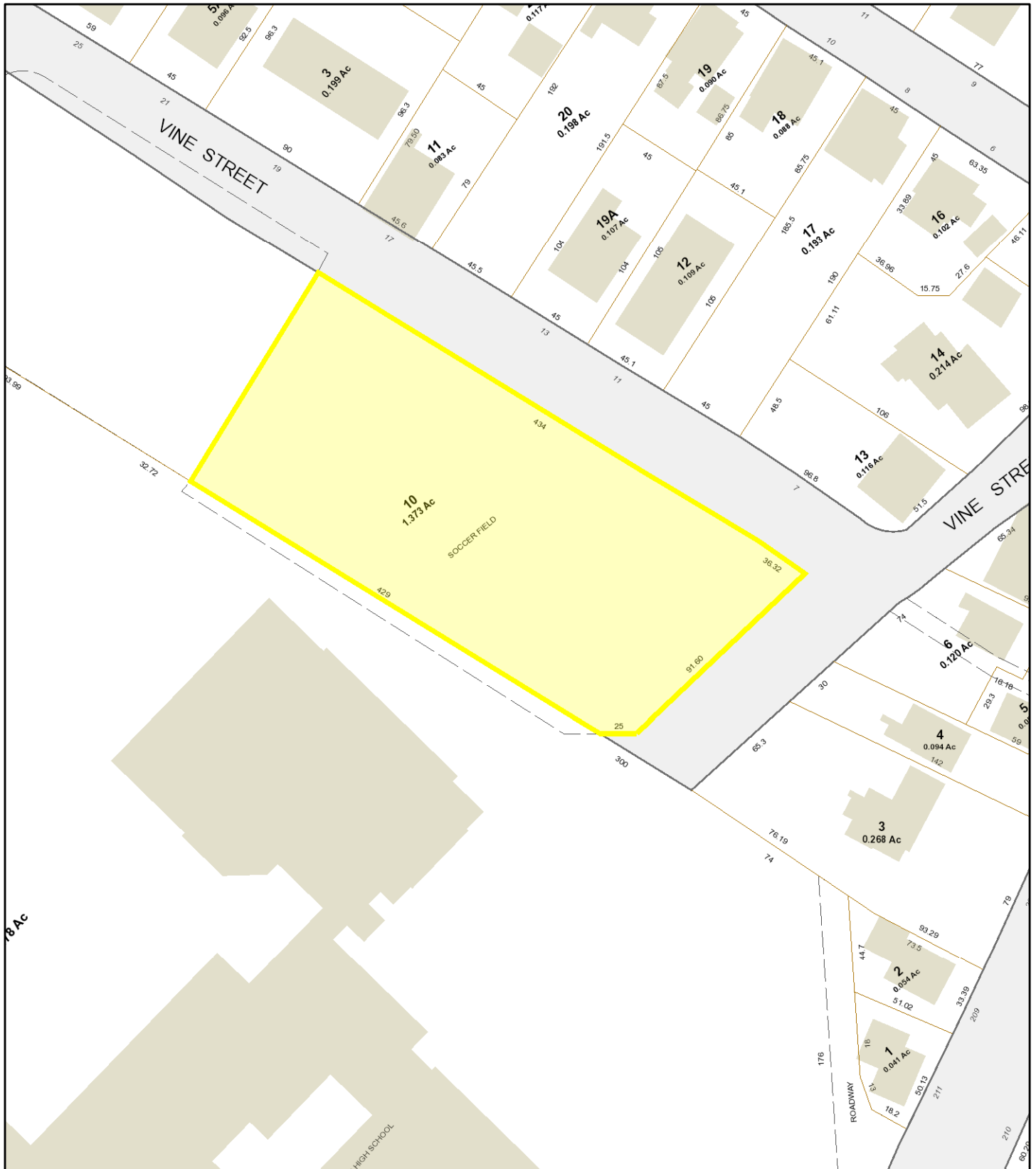
Marblehead, MA

1 inch = 69 Feet



October 4, 2023

www.cai-tech.com



Data shown on this map is provided for planning and informational purposes only. The municipality and CAI Technologies are not responsible for any use for other purposes or misuse or misrepresentation of this map.



Coffin School, 1 Turner Road

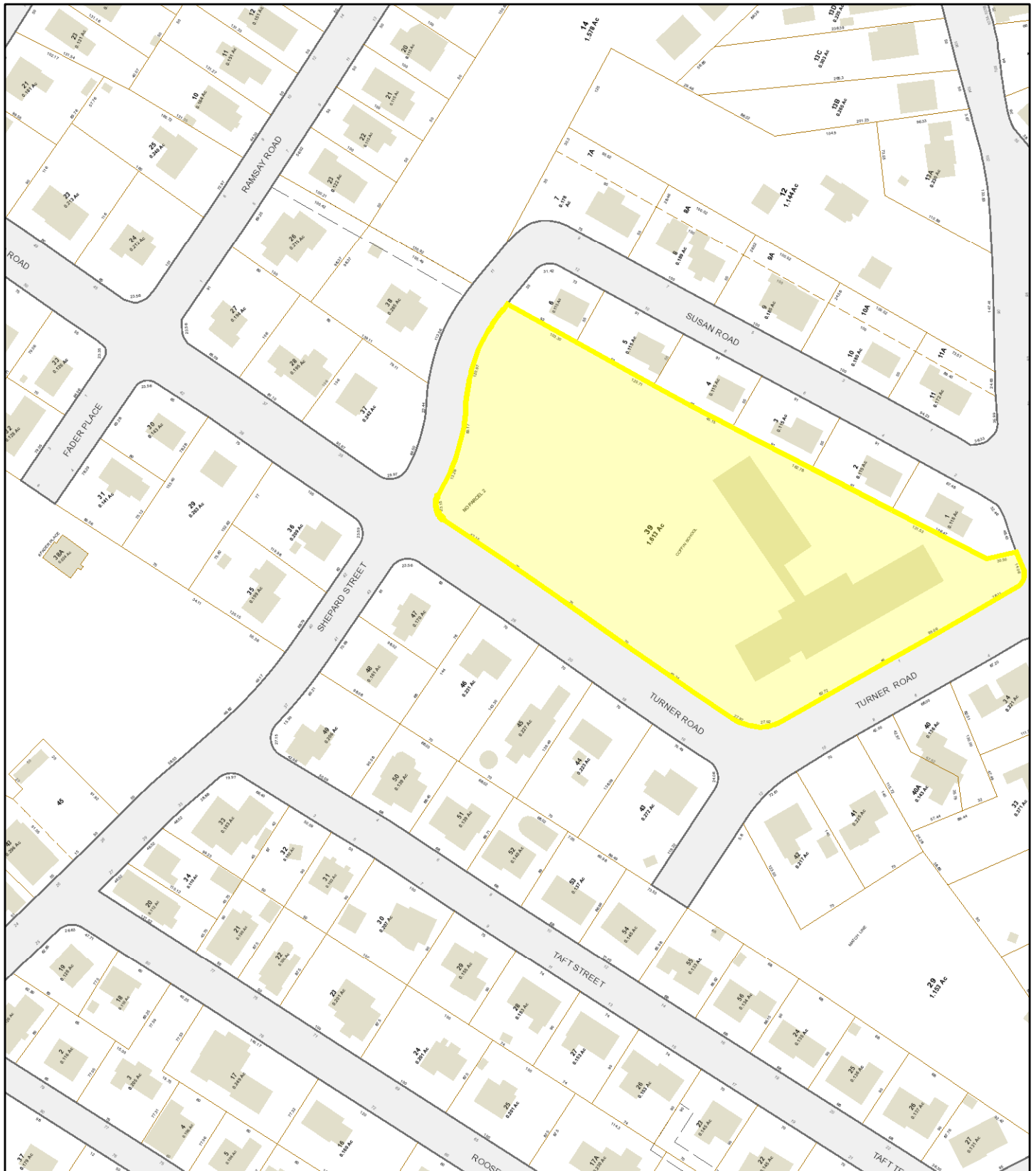
Marblehead, MA

1 inch = 138 Feet



September 26, 2023

www.cai-tech.com



Data shown on this map is provided for planning and informational purposes only. The municipality and CAI Technologies are not responsible for any use for other purposes or misuse or misrepresentation of this map.



21 Vine Street, Land near Coffin School

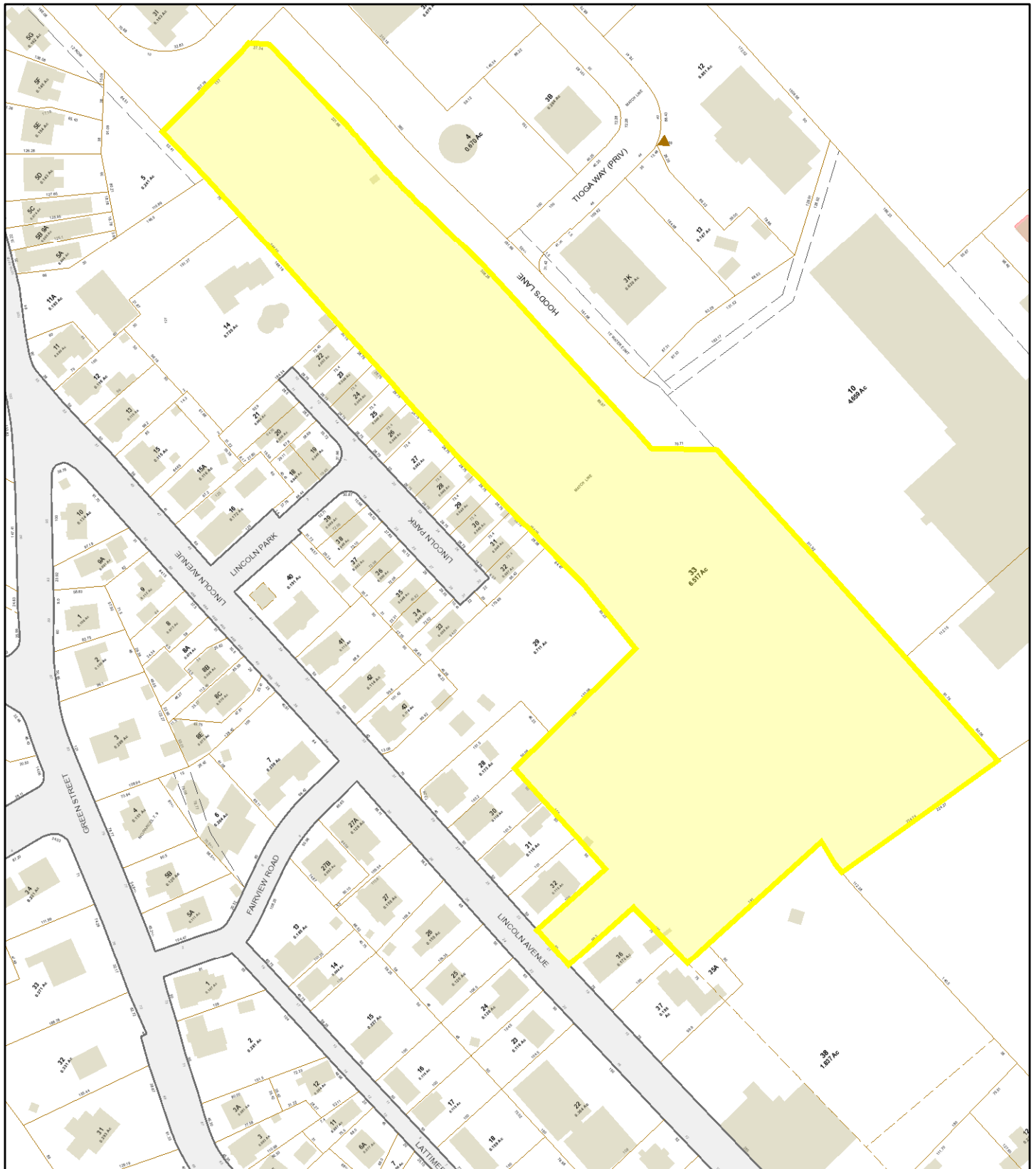
Marblehead, MA

1 inch = 152 Feet



October 4, 2023

www.cai-tech.com



Data shown on this map is provided for planning and informational purposes only. The municipality and CAI Technologies are not responsible for any use for other purposes or misuse or misrepresentation of this map.